

Spec Lot Addendum(s)

Project: Pine Valley Forevergreen - Ph 2, Model: 5004-COR(A) - BEAUMONT A
(Corner), Lot: 0001
4, Arbordale Drive, Vaughan, ONTARIO

Addendum 03/[03] | STRUCTURAL ORDER

STRUCTURAL EXTRA'S

Powder Room		
Category	Attribute	Opt. Quantity
ELECTRICAL		2.00
Opt. Description		
S/I 4" E/S LED INTERIOR POT LIGHT - EACH. WHITE		
Notes		
IN LIEU OF STD VANITY LIGHT, USE STD SWITCH. SEE PLAN FOR LOCATION.		
Principal Bedroom		
Category	Attribute	Opt. Quantity
ELECTRICAL SWITCHES		1.00
Opt. Description		
S/I ADDITIONAL INTERIOR SWITCH. SINGLE POLE		
Notes		
FOR POTLIGHTS		
ELECTRICAL		4.00
Opt. Description		
S/I 4" E/S LED INTERIOR POT LIGHT - EACH. WHITE		
Notes		
IN ADDITION TO STD CEILING LIGHT.		
Breakfast Room		
Category	Attribute	Opt. Quantity
ELECTRICAL		4.00
Opt. Description		
S/I 4" E/S LED INTERIOR POT LIGHT - EACH. WHITE		
Notes		
IN ADDITION TO STD CEILING LIGHT. SEE PLAN FOR LOCATION.		
ELECTRICAL SWITCHES		1.00
Opt. Description		
S/I ADDITIONAL INTERIOR SWITCH. SINGLE POLE		
Notes		
FOR POTLIGHTS		
EXT, WINDOWS AND DOORS		1.00
Opt. Description		
INCREASE EXSITING REAR GARDEN DOOR OR FRENCH GARDEN DOOR HEIGHT TO APPROX. 96" - NO TRANSOM IF APPLICABLE.		
Notes		
Dining Room		
Category	Attribute	Opt. Quantity
ELECTRICAL		4.00
Opt. Description		
S/I 4" E/S LED INTERIOR POT LIGHT - EACH. WHITE		
Notes		

Spec Lot Addendum(s)

Project: Pine Valley Forevergreen - Ph 2, Model: 5004-COR(A) - BEAUMONT A
(Corner), Lot: 0001
4, Arbordale Drive, Vaughan, ONTARIO

Category	Attribute	Opt. Quantity
IN ADDITION TO STD CEILING LIGHT. SEE PLAN FOR LOCATION.		
ELECTRICAL SWITCHES		1.00
Opt. Description		
S/I ADDITIONAL INTERIOR SWITCH. SINGLE POLE		
Notes		
FOR POTLIGHTS		
Dressing Room		
Category	Attribute	Opt. Quantity
ELECTRICAL		4.00
Opt. Description		
S/I 4" E/S LED INTERIOR POT LIGHT - EACH. WHITE		
Notes		
IN ADDITION TO STD CEILING LIGHT. SEE PLAN FOR LOCATION.		
ELECTRICAL SWITCHES		1.00
Opt. Description		
S/I ADDITIONAL INTERIOR SWITCH. SINGLE POLE		
Notes		
FOR POTLIGHTS		
Principal Ensuite		
Category	Attribute	Opt. Quantity
ELECTRICAL		1.00
Opt. Description		
S/I TUB/SHOWER POT LIGHT: 4 INCH RECESSED POT LIGHT COMPLETE WITH SWITCH		
Notes		
IN ADDITION TO STD SHOWER LIGHT, USE SAME SWITCH.		
ELECTRICAL OUTLETS		1.00
Opt. Description		
Capped Ceiling Outlet		
Notes		
LOCATE APPROX CENTER ABOVE TUB. SAME SWITCH AS STD. SEE PLAN FOR LOCATION.		
ELECTRICAL		4.00
Opt. Description		
S/I 4" E/S LED INTERIOR POT LIGHT - EACH. WHITE		
Notes		
IN LIEU OF STD CEILING LIGHT, USE STD SWITCH. SEE PLAN FOR LOCATION.		
ELECTRICAL		2.00
Opt. Description		
S/I 4" E/S LED INTERIOR POT LIGHT - EACH. WHITE		
Notes		
WATER CLOSET: IN LIEU OF STD CEILING LIGHT, USE STD SWITCH.		
FRAMING		1.00
Opt. Description		
S/I RECESSED SHOWER NICHE [SHAMPOO SHELF] - COMPLETE WITH QUARTZ ON 4 SIDES, STANDARD TILE, APPROX. 12 X 42 INSTALLED VERTICALLY WITH QUARTZ SHELF DIVIDERS. BASED ON STANDARD FINISHES		
Notes		

Spec Lot Addendum(s)

Project: Pine Valley Forevergreen - Ph 2, Model: 5004-COR(A) - BEAUMONT A
(Corner), Lot: 0001
4, Arbordale Drive, Vaughan, ONTARIO

Category	Attribute	Opt. Quantity
FIXTURES		1.00
Opt. Description		
Align 3-Function Rain Shwr/Hand Shwr/S.Bar - BL		
Notes		
FIXTURES		1.00
Opt. Description		
Align Free Standing Tub Filler - BL		
Notes		
FIXTURES		2.00
Opt. Description		
Align 2-Handle Widespread Lav - BL		
Notes		
Exterior		
Category	Attribute	Opt. Quantity
ELECTRICAL		1.00
Opt. Description		
Exterior Hanging Pendant Light		
Notes		
IN LIEU OF STD COACH LIGHT, USE STD SWITCH.		
NETWORK AND WIRING		1.00
Opt. Description		
S/I ROUGH - IN WIRING: PACKAGE OFFERING FOR 5 CAMERAS + (1) DOOR BELL (CAMERAS & DOOR BELL FIXTURES NOT INCLUDED)		
Notes		
Foyer		
Category	Attribute	Opt. Quantity
CEILINGS		1.00
Opt. Description		
S/I OPTIONAL ROUND COFFERED CEILING AS SHOWN IN MODEL HOME PRICE PER ROOM		
Notes		
Garage		
Category	Attribute	Opt. Quantity
ELECTRICAL OUTLETS		1.00
Opt. Description		
S/I 240V (50 AMP) RECEPTACLE ON A SEPARATE CIRCUIT		
Notes		
FOR FUTURE CAR CHARGER		
Great Room		
Category	Attribute	Opt. Quantity
ELECTRICAL OUTLETS		1.00
Opt. Description		
S/I 110V WALL RECEPTACLE (NOT ON SEPARATE CIRCUIT)		
Notes		
LOCATE APPROX 66" AFF ABOVE FIREPLACE FOR FUTURE TV		

Spec Lot Addendum(s)

Project: Pine Valley Forevergreen - Ph 2, Model: 5004-COR(A) - BEAUMONT A
(Corner), Lot: 0001
4, Arbordale Drive, Vaughan, ONTARIO

Category	Attribute	Opt. Quantity
NETWORK AND WIRING		1.00
Opt. Description		
S/I CONDUIT PIPE FOR WALL MOUNT TV LOCATED APPROX. 66" A.F.F. ABOVE FIREPLACE THROUGH BASEMENT TO CABLE LOCATION. SEE PLAN FOR LOCATION.		
Notes		
Hall Main Floor		
Category	Attribute	Opt. Quantity
CEILINGS		1.00
Opt. Description		
S/I OPTIONAL ROUND COFFERED CEILING AS SHOWN IN MODEL HOME PRICE PER ROOM		
Notes		
ELECTRICAL		5.00
Opt. Description		
S/I 4" E/S LED INTERIOR POT LIGHT - EACH. WHITE		
Notes		
IN LIEU OF STD CEILING LIGHT, USE STD SWITCH.		
ELECTRICAL SWITCHES		1.00
Opt. Description		
S/I HINGE SWITCH - EACH INCLUDES 1 LED POTLIGHT (DOOR ACTIVATED)		
Notes		
Hall 2nd Level		
Category	Attribute	Opt. Quantity
CEILINGS		1.00
Opt. Description		
S/I OPTIONAL ROUND COFFERED CEILING AS SHOWN IN MODEL HOME PRICE PER ROOM		
Notes		
ELECTRICAL		6.00
Opt. Description		
S/I 4" E/S LED INTERIOR POT LIGHT - EACH. WHITE		
Notes		
IN LIEU OF STD CEILING LIGHT, USE STD SWITCH. SEE PLAN FOR LOCATION.		
INTERIOR DOORS AND TRIM		16.00
Opt. Description		
S/I 8FT HIGH DOOR THROUGHOUT SECOND FLOOR IN LIEU OF STANDARD HEIGHT DOOR. PRICE IS PER DOOR		
Notes		
Kitchen		
Category	Attribute	Opt. Quantity
CENTRAL HEATING, A/C		1.00
Opt. Description		
S/I KITCHEN - UPGRADE TO 8" DUCT IN LIEU OF STANDARD OFFERING		
Notes		
ELECTRICAL OUTLETS		1.00
Opt. Description		

Spec Lot Addendum(s)

Project: Pine Valley Forevergreen - Ph 2, Model: 5004-COR(A) - BEAUMONT A
(Corner), Lot: 0001
4, Arbordale Drive, Vaughan, ONTARIO

Category	Attribute	Opt. Quantity
S/I 110V WALL RECEPTACLE ON SEPARATE CIRCUIT		
Notes		
FUTURE FREEZER. SEE PLAN FOR LOCATION.		
ELECTRICAL OUTLETS		1.00
Opt. Description		
S/I 240V (50 AMP) RECEPTACLE ON A SEPARATE CIRCUIT		
Notes		
FOR WALL OVEN COMBO		
ELECTRICAL		2.00
Opt. Description		
S/I 4" E/S LED INTERIOR POT LIGHT - EACH. WHITE		
Notes		
IN ADDITION TO STD POTLIGHTS, USE SAME SWITCH. SEE PLAN FOR LOCATION.		
ELECTRICAL		1.00
Opt. Description		
BASE STND - 8 INCLUDED 4" WHITE E/S LED POT LIGHTS with (1) SWITCH. TO BE LOCATED ON MAIN FLOOR IN (1) ROOM ONLY.		
Notes		
ELECTRICAL		1.00
Opt. Description		
Kit/Serv Led Valance Fixture - 50/60" Series only		
Notes		
ELECTRICAL OUTLETS		1.00
Opt. Description		
S/I 110V WALL RECEPTACLE (NOT ON SEPARATE CIRCUIT)		
Notes		
FOR GAS APPLIANCE		
ELECTRICAL		1.00
Opt. Description		
RELOCATE KITCHEN APPLIANCE FROM STANDARD LOCATION - APPROX. "NEW" LOCATION AS PER ATTACHED DRAWINGS		
Notes		
RELOCATE FRIDGE. SEE PLAN FOR LOCATION.		
ELECTRICAL		1.00
Opt. Description		
RELOCATE STANDARD CEILING MOUNT FIXTURE		
Notes		
RELOCATE TO APPROX CENTERED ABOVE ISLAND. SEE PLAN FOR LOCATION		
GASLINE		1.00
Opt. Description		
GAS LINE ROUGH-IN - MAIN FLOOR FOR APPLIANCE		
Notes		
FOR GAS COOKTOP		
ELECTRICAL OUTLETS		1.00
Opt. Description		

Spec Lot Addendum(s)

Project: Pine Valley Forevergreen - Ph 2, Model: 5004-COR(A) - BEAUMONT A
(Corner), Lot: 0001
4, Arbordale Drive, Vaughan, ONTARIO

Category	Attribute	Opt. Quantity
Capped Ceiling Outlet		
Notes		
LOCATE APPROX CENTERED ABOVE ISLAND. USE SAME SWITCH AS STD.		
Laundry		
Category	Attribute	Opt. Quantity
ELECTRICAL		3.00
Opt. Description		
S/I 4" E/S LED INTERIOR POT LIGHT - EACH. WHITE		
Notes		
IN LIEU OF STD CEILING LIGHT, USE STD SWITCH. SEE PLAN FOR LOCATION.		
Library		
Category	Attribute	Opt. Quantity
ELECTRICAL		4.00
Opt. Description		
S/I 4" E/S LED INTERIOR POT LIGHT - EACH. WHITE		
Notes		
IN LIEU OF STD CEILING LIGHT, USE STD SWITCH. SEE PLAN FOR LOCATION.		
FRAMING		1.00
Opt. Description		
S/I COFFERED CEILING (OPTIONAL PER ROOM)		
Notes		
WAFFLE CEILING		1.00
Opt. Description		
WAFFLE CEILING , BEAM DETAIL AS PER PLAN (4 BOXES) OPTION # 1 CTRB07		
Notes		
Mud Room		
Category	Attribute	Opt. Quantity
ELECTRICAL SWITCHES		1.00
Opt. Description		
S/I HINGE SWITCH - EACH INCLUDES 1 LED POTLIGHT (DOOR ACTIVATED)		
Notes		
Servery		
Category	Attribute	Opt. Quantity
ELECTRICAL OUTLETS		1.00
Opt. Description		
S/I 110V WALL RECEPTACLE ON SEPARATE CIRCUIT		
Notes		
FOR FUTURE WINE FRIDGE. SEE PLAN FOR LOCATION.		
ELECTRICAL		2.00
Opt. Description		
S/I 4" E/S LED INTERIOR POT LIGHT - EACH. WHITE		
Notes		
IN LIEU OF STD CEILING LIGHT, USE STD SWITCH. SEE PLAN FOR LOCATION.		

Spec Lot Addendum(s)

Project: Pine Valley Forevergreen - Ph 2, Model: 5004-COR(A) - BEAUMONT A
(Corner), Lot: 0001
4, Arbordale Drive, Vaughan, ONTARIO

Stairs to 2nd Level		
Category	Attribute	Opt. Quantity
ELECTRICAL		3.00
Opt. Description	S/I ROUGH-IN FOR WALL SCONCE - INCLUDED (1) CAPPED OUTLET- EACH FIXTURE NOT INCLUDED. SWITCH NOT INCLUDED.	
Notes	LOCATE APPROX 74" AFF AT STAIR LANDINGS. SEE PLAN FOR LOCATION.	
ELECTRICAL SWITCHES		1.00
Opt. Description	S/I 3-WAY SWITCH (LIGHT OPERATED BY 2 DIFFERENT SWITCHES)	
Notes	FOR SCONCES AT STAIRS	

Spec Lot Addendum(s)

Project: Pine Valley Forevergreen - Ph 2, Model: 5004-COR(A) - BEAUMONT A
(Corner), Lot: 0001
4, Arbordale Drive, Vaughan, ONTARIO

Addendum 02/[02] | STRUCTURAL ORDER

STRUCTURAL EXTRA'S

General		
Category	Attribute	Opt. Quantity
Floor Plan Layout Changes		1.00
Opt. Description		
Optional Loggia With Cold Cellar		
Notes		

Spec Lot Addendum(s)

Project: Pine Valley Forevergreen - Ph 2, Model: 5004(A) - BEAUMONT, Lot: 0001
4, Arbordale Drive, Vaughan, ONTARIO

Addendum 04/[04] | Loggia w/ Cold Cellar

STRUCTURAL EXTRA'S

General	
Category	Attribute
Floor Plan Layout Changes	
Opt. Description	
Optional Loggia With Cold Cellar	
Notes	
INCLUDED IN APS	

Opt. Quantity
1.00

Spec Lot Addendum(s)

Project: Pine Valley Forevergreen - Ph 2, Model: 5004(A) - BEAUMONT, Lot: 0001
4, Arbordale Drive, Vaughan, ONTARIO

This is your direction to install the above extras in accordance with the following terms and conditions:

1. In the event the work on the house has progressed beyond the point where the items covered by this extra agreement cannot be installed without entailing any unusual expense, this order is to be cancelled and any deposit paid in connection with same is to be refunded to the purchaser.
2. The Vendor will undertake to incorporate the work covered by the sales extra in the construction of the house but will not be liable to the purchaser in anyway, if for any reason the work covered by the extra is not carried out. In that event, any monies paid in connection with same shall be returned to the purchaser.
3. It is understood and agreed that if for any reason whatsoever the transaction of the Purchase and Sale is not completed by the purchaser, the total cost of the extras ordered are not refundable to the Purchaser(s).
4. Extras or changes will not be processed unless signed by the Vendor.
5. These extras may not be amended without the written consent of Gold Park Homes.
6. The purchaser(s) and the builder acknowledge and agree that this "Purchaser Extra" form shall not be part of the Agreement of Purchase and Sale entered into between them, nor an addendum thereto.
7. Prices are estimates only and guaranteed for a period of 5 business days.
8. Post-dated cheques with NOT be accepted.
9. Estimates or orders will NOT be accepted once construction has commenced.
10. All extras/selections are final, checked and approved by purchaser. Purchaser has reviewed and confirmed there are no missing or outstanding items.
11. Any inquiry to re-open a file and/or request a change to any extra or selection is subject to a minimum fee of \$1500.00 (fifteen hundred dollars).
12. No estimates will be considered an official order until submitted as a signed Purchaser Extra order, accompanied by payment in full.
13. Purchaser has reviewed this addendum for accuracy. There are no outstanding items.
14. Once extras/selections are signed, they are considered final. Absolutely no changes or deletions will be accepted regardless of when selections are finalized or the stage of construction.

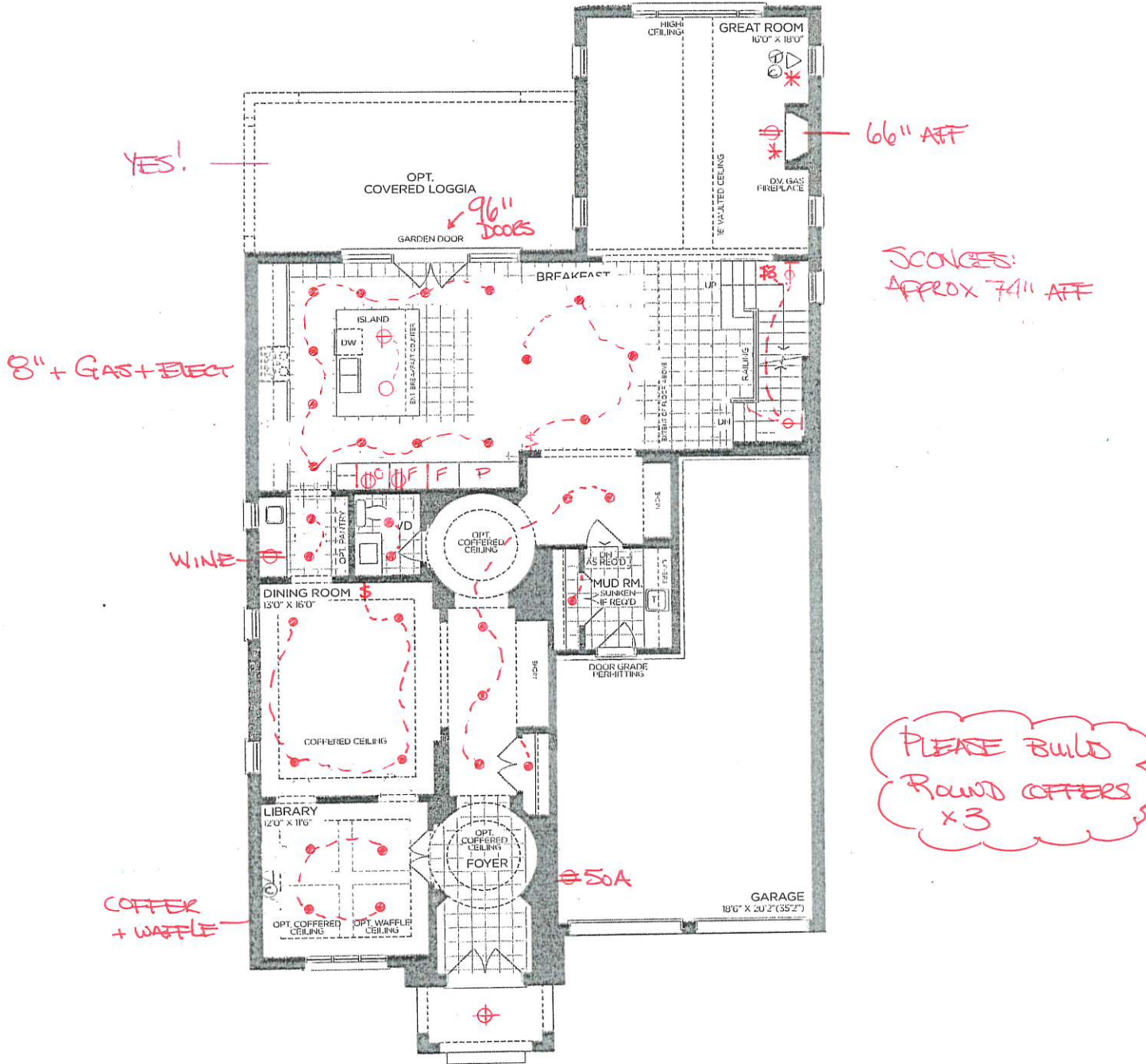
SCHEDULE 'F'



PN2-1
SEPT 23 2022
FEB 10 2023

The
Beaumont
EAGLE'S RIDGE COLLECTION

- Elevation A - 4,339 sq.ft.
4,492 sq.ft. Opt. Elevator
Plus 176 sq.ft. Fin. Basement Foyer Opt. Elevator Plan
Plus 172 sq.ft. Fin. Basement Foyer
- Elevation B - 4,333 sq.ft.
4,486 sq.ft. Opt. Elevator
Plus 176 sq.ft. Fin. Basement Foyer Opt. Elevator Plan
Plus 172 sq.ft. Fin. Basement Foyer
- Elevation C - 4,418 sq.ft.
4,571 sq.ft. Opt. Elevator
Plus 176 sq.ft. Fin. Basement Foyer Opt. Elevator Plan
Plus 172 sq.ft. Fin. Basement Foyer



GROUND FLOOR | ELEV. A

VENDOR

PURCHASER

PURCHASER

GOLD PARK
WORTH MORE™

Prices, figures, illustrations, sizes, features and finishes are subject to change without notice. Areas and dimensions are approximate and actual usable floor space may vary from the stated area. Layout may be reverse of the unit purchased. E. & O.E.

SCHEDULE 'F'



PV2-1
SEPT 23 2022
FEB 10, 2023

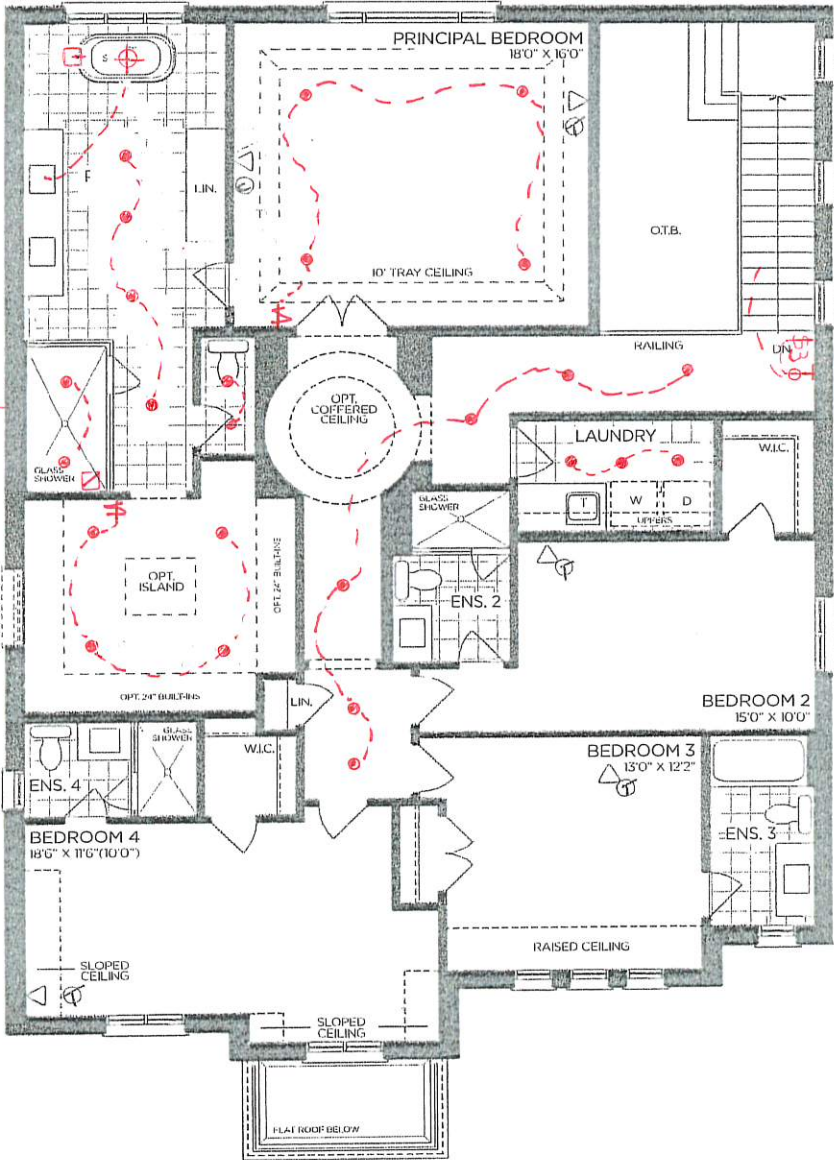
The
Beaumont
EAGLE'S RIDGE COLLECTION

- Elevation A - 4,339 sq.ft.
4,492 sq.ft. Opt. Elevator
Plus 176 sq.ft. Fin. Basement Foyer Opt. Elevator Plan
Plus 172 sq.ft. Fin. Basement Foyer
- Elevation B - 4,333 sq.ft.
4,486 sq.ft. Opt. Elevator
Plus 176 sq.ft. Fin. Basement Foyer Opt. Elevator Plan
Plus 172 sq.ft. Fin. Basement Foyer
- Elevation C - 4,418 sq.ft.
4,571 sq.ft. Opt. Elevator
Plus 176 sq.ft. Fin. Basement Foyer Opt. Elevator Plan
Plus 172 sq.ft. Fin. Basement Foyer

9 1/2" Doors
on 2nd Floor

Floor Mount
Tub Filter

RAIN
SHOWER



SECOND FLOOR | ELEV. A

VENDOR

PURCHASER

PURCHASER



Prices, figures, illustrations, sizes, features and finishes are subject to change without notice. Areas and dimensions are approximate and actual usable floor space may vary from the stated area. Layout may be reverse of the unit purchased. E. & O.E.

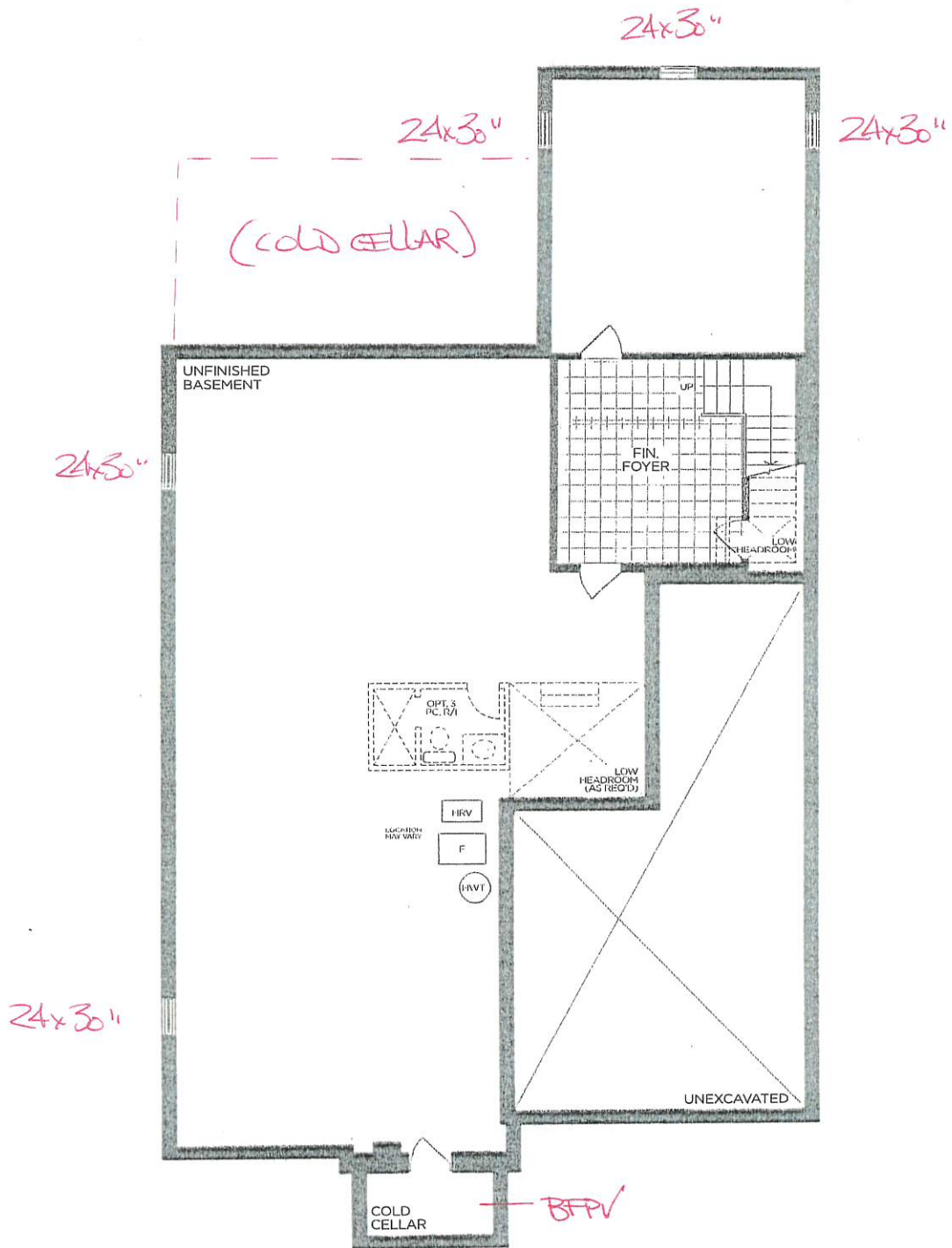
SCHEDULE 'F'



PV2-1
SEPT 23 2022
FEB 10 2023

The
Beaumont
EAGLE'S RIDGE COLLECTION

➡ Elevation A - 4,339 sq.ft.
4,492 sq.ft. Opt. Elevator
Plus 176 sq.ft. Fin. Basement Foyer Opt. Elevator Plan
Plus 172 sq.ft. Fin. Basement Foyer
Elevation B - 4,333 sq.ft.
4,486 sq.ft. Opt. Elevator
Plus 176 sq.ft. Fin. Basement Foyer Opt. Elevator Plan
Plus 172 sq.ft. Fin. Basement Foyer
Elevation C - 4,418 sq.ft.
4,571 sq.ft. Opt. Elevator
Plus 176 sq.ft. Fin. Basement Foyer Opt. Elevator Plan
Plus 172 sq.ft. Fin. Basement Foyer



BASEMENT | ELEV. A

VENDOR

PURCHASER

PURCHASER

GOLDPARK
WORTH MORE™

Prices, figures, illustrations, sizes, features and finishes are subject to change without notice. Areas and dimensions are approximate and actual usable floor space may vary from the stated area. Layout may be reverse of the unit purchased. E. & O.E.



PINE VALLEY
FOREVERGREEN

PLUMBING UPGRADES

ALIGN

Ceiling Mount: 226651 (12" Arm)



Brushed Gold



Brushed Nickel



Chrome



Matte Black



Date: Feb 10, 2023

Lot: 01

Location: Principal Ensuite

Signature:

Signature:

**Shower with 3-Function Transfer Valve/Trim
and Slide Bar with Hand Shower + 7" Rain
Showerhead From Ceiling on 12" Arm**

(includes plumbing provision for ceiling mount showerhead)

Model T2192EP/UT4191/3887EP/226651/S176/U361CI/

62320/A725

GOLD PARK
WORTH MORE™



PINE VALLEY
FOREVERGREEN

PLUMBING UPGRADES

ALIGN



- Brushed Gold ☐
- Brushed Nickel ☐
- Chrome ☐
- Matte Black ☒ x2

Date: Feb 10, 2023	Lot: 01
Location: Principal Ensuite	
Signature:	Signature:

Two Handle 8" Widespread Lav
Model T6193/69000

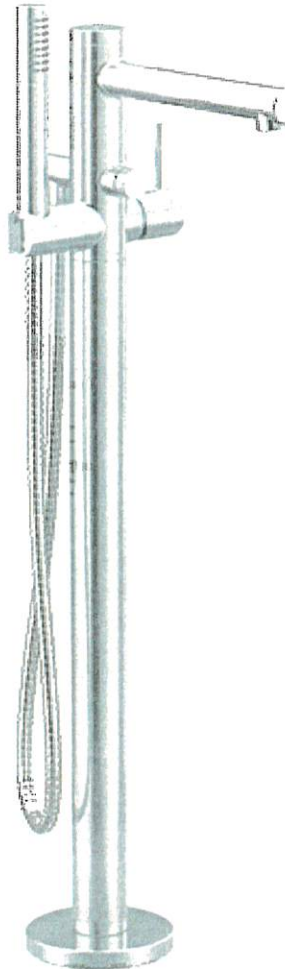
GOLDPARK
WORTH MORE™



PINE VALLEY
FOREVERGREEN

PLUMBING UPGRADES

ALIGN



- Brushed Gold ☐
- Brushed Nickel ☐
- Chrome ☐
- Matte Black ☒

Date: Feb 10, 2023	Lot: 01
Location: Principal Ensuite	
Signature:	Signature:

Freestanding Floor-Mounted Tub Filler
Model 395/TS50100

GOLDPARK
WORTH MORE™

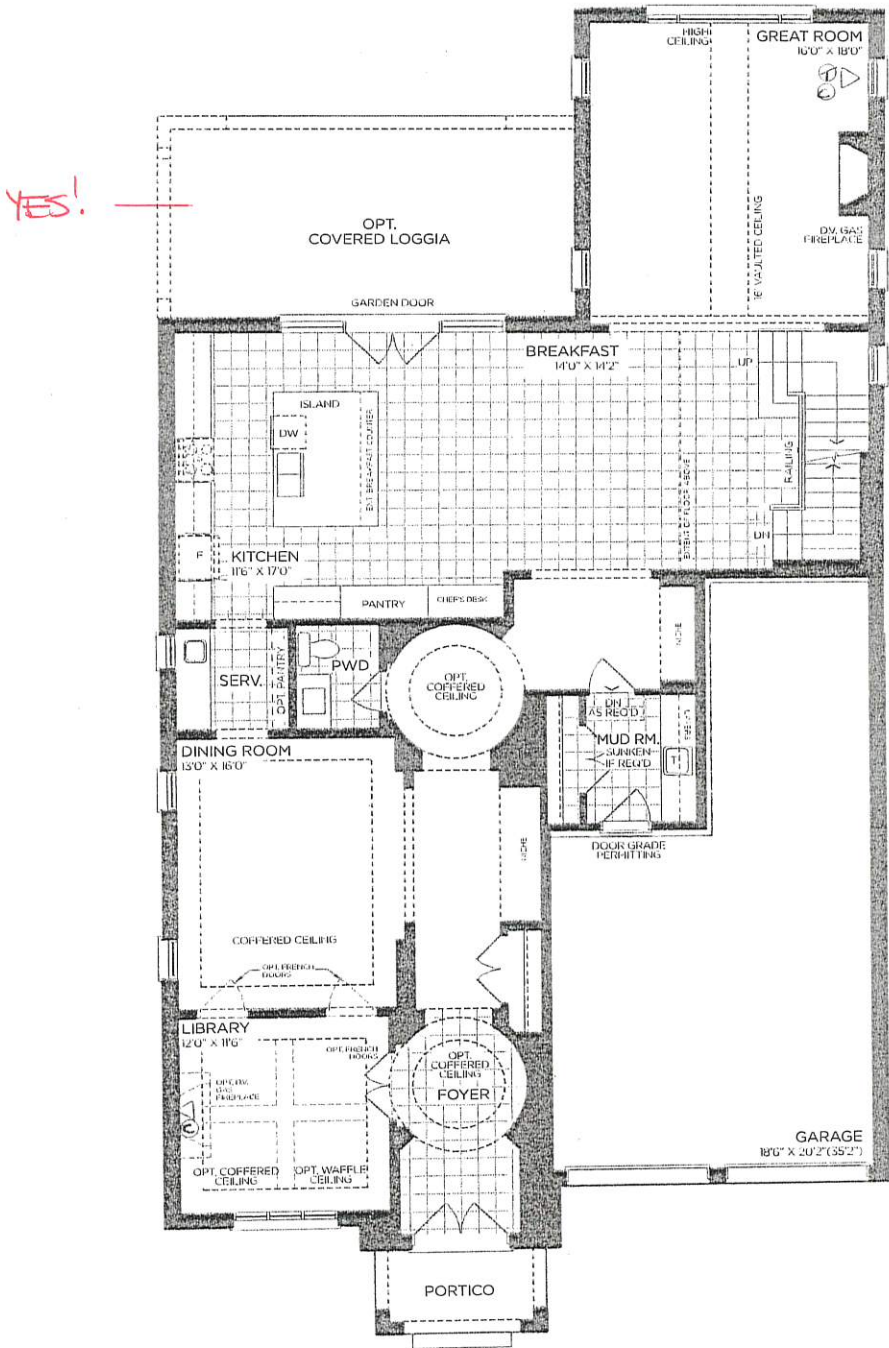
SCHEDULE 'F'



FV2-1
SEPT 23 2022

The
Beaumont
EAGLE'S RIDGE COLLECTION

- Elevation A - 4,339 sq.ft.
4,492 sq.ft. Opt. Elevator
Plus 176 sq.ft. Fin. Basement Foyer Opt. Elevator Plan
Plus 172 sq.ft. Fin. Basement Foyer
- Elevation B - 4,333 sq.ft.
4,486 sq.ft. Opt. Elevator
Plus 176 sq.ft. Fin. Basement Foyer Opt. Elevator Plan
Plus 172 sq.ft. Fin. Basement Foyer
- Elevation C - 4,418 sq.ft.
4,571 sq.ft. Opt. Elevator
Plus 176 sq.ft. Fin. Basement Foyer Opt. Elevator Plan
Plus 172 sq.ft. Fin. Basement Foyer



GROUND FLOOR | ELEV. A

VENDOR

PURCHASER

PURCHASER

GOLD PARK
WORTH MORE™

Prices, figures, illustrations, sizes, features and finishes are subject to change without notice. Areas and dimensions are approximate and actual usable floor space may vary from the stated area. Layout may be reverse of the unit purchased. E. & O.E.

SCHEDULE 'F'

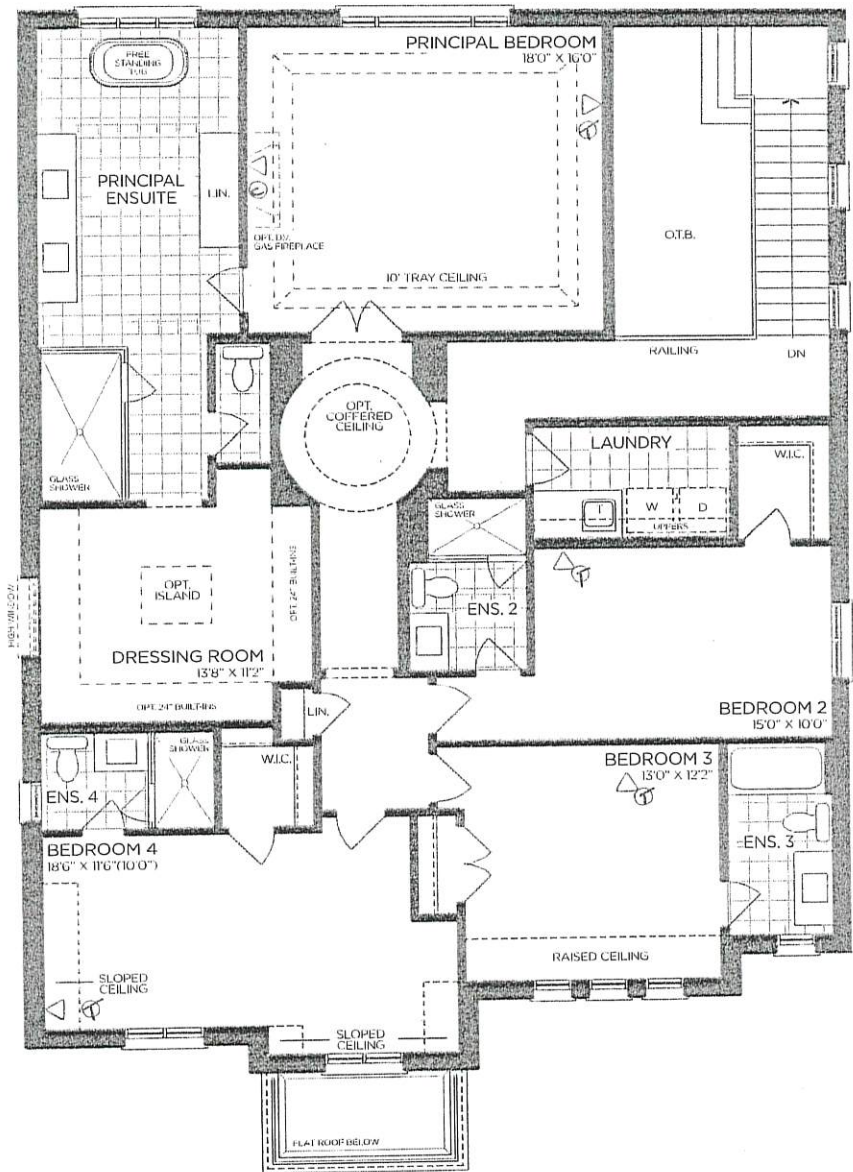


PV2-1
SEPT 23 2022

The Beaumont

EAGLE'S RIDGE COLLECTION

- Elevation A - 4,339 sq.ft.
4,492 sq.ft. Opt. Elevator
Plus 176 sq.ft. Fin. Basement Foyer Opt. Elevator Plan
Plus 172 sq.ft. Fin. Basement Foyer
- Elevation B - 4,333 sq.ft.
4,486 sq.ft. Opt. Elevator
Plus 176 sq.ft. Fin. Basement Foyer Opt. Elevator Plan
Plus 172 sq.ft. Fin. Basement Foyer
- Elevation C - 4,418 sq.ft.
4,571 sq.ft. Opt. Elevator
Plus 176 sq.ft. Fin. Basement Foyer Opt. Elevator Plan
Plus 172 sq.ft. Fin. Basement Foyer



SECOND FLOOR | ELEV. A

VENDOR	<input type="text"/>
PURCHASER	<input type="text"/>
PURCHASER	<input type="text"/>



Prices, figures, illustrations, sizes, features and finishes are subject to change without notice. Areas and dimensions are approximate and actual usable floor space may vary from the stated area. Layout may be reverse of the unit purchased. E. & O.E.

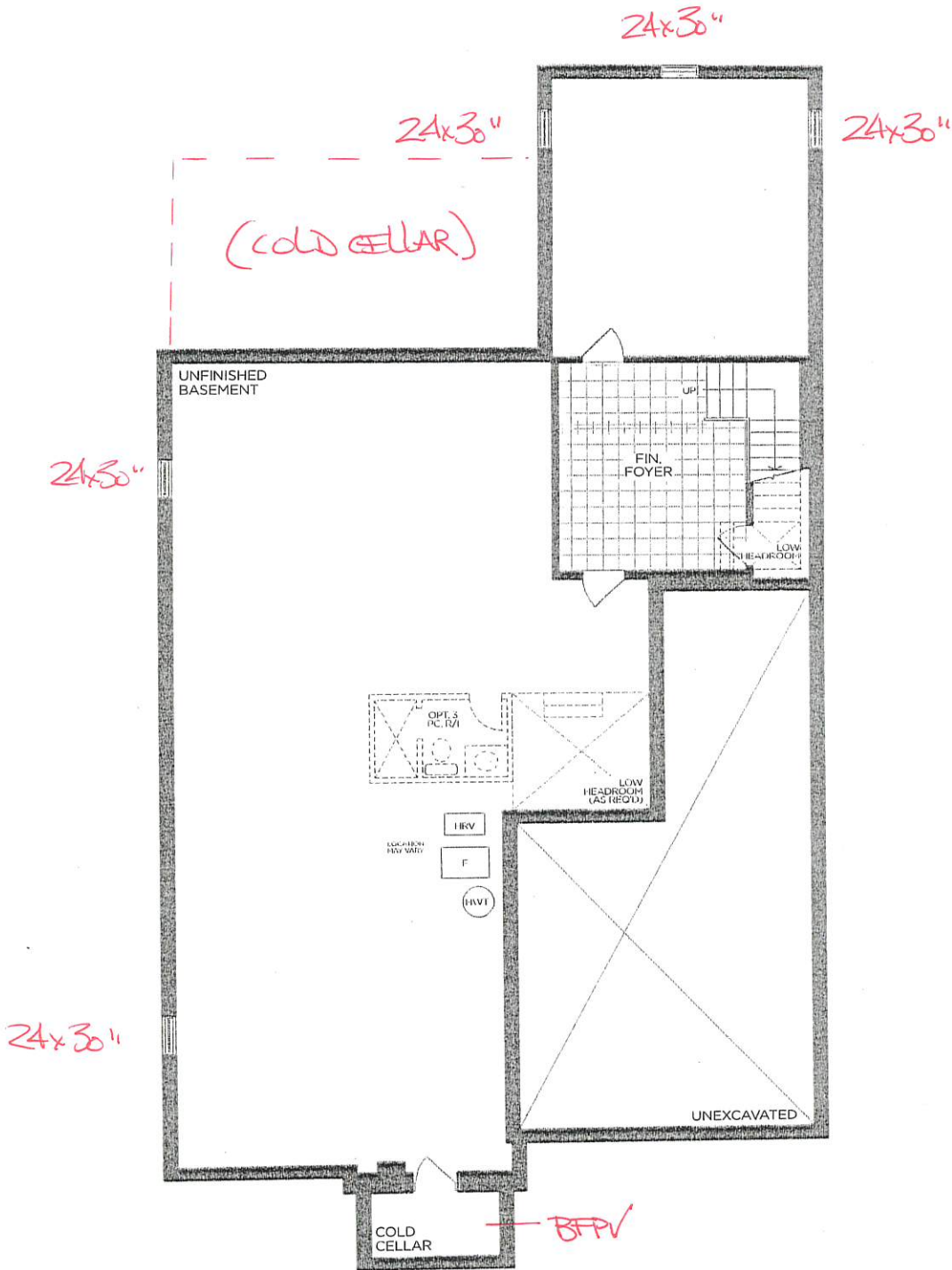
SCHEDULE 'F'



PV2-1
SEPT 23 2012

The
Beaumont
EAGLE'S RIDGE COLLECTION

- Elevation A - 4,339 sq.ft.
4,492 sq.ft. Opt. Elevator
Plus 176 sq.ft. Fin. Basement Foyer Opt. Elevator Plan
Plus 172 sq.ft. Fin. Basement Foyer
- Elevation B - 4,333 sq.ft.
4,486 sq.ft. Opt. Elevator
Plus 176 sq.ft. Fin. Basement Foyer Opt. Elevator Plan
Plus 172 sq.ft. Fin. Basement Foyer
- Elevation C - 4,418 sq.ft.
4,571 sq.ft. Opt. Elevator
Plus 176 sq.ft. Fin. Basement Foyer Opt. Elevator Plan
Plus 172 sq.ft. Fin. Basement Foyer



BASEMENT | ELEV. A

VENDOR

PURCHASER

PURCHASER



Prices, figures, illustrations, sizes, features and finishes are subject to change without notice. Areas and dimensions are approximate and actual usable floor space may vary from the stated area. Layout may be reverse of the unit purchased. E. & O.E.