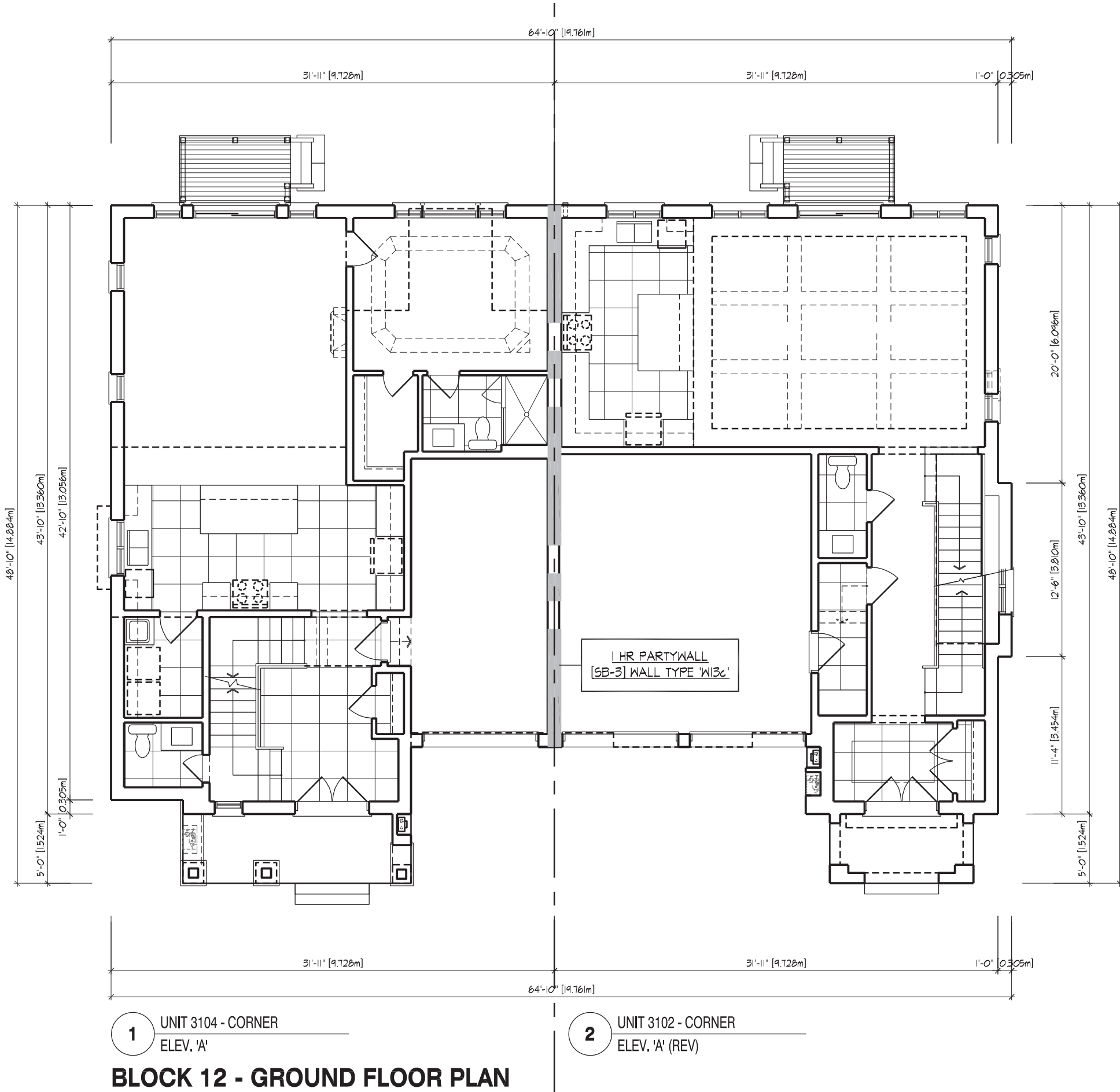


1 UNIT 3104 - CORNER
ELEV. 'A'

2 UNIT 3102 - CORNER
ELEV. 'A' (REV)

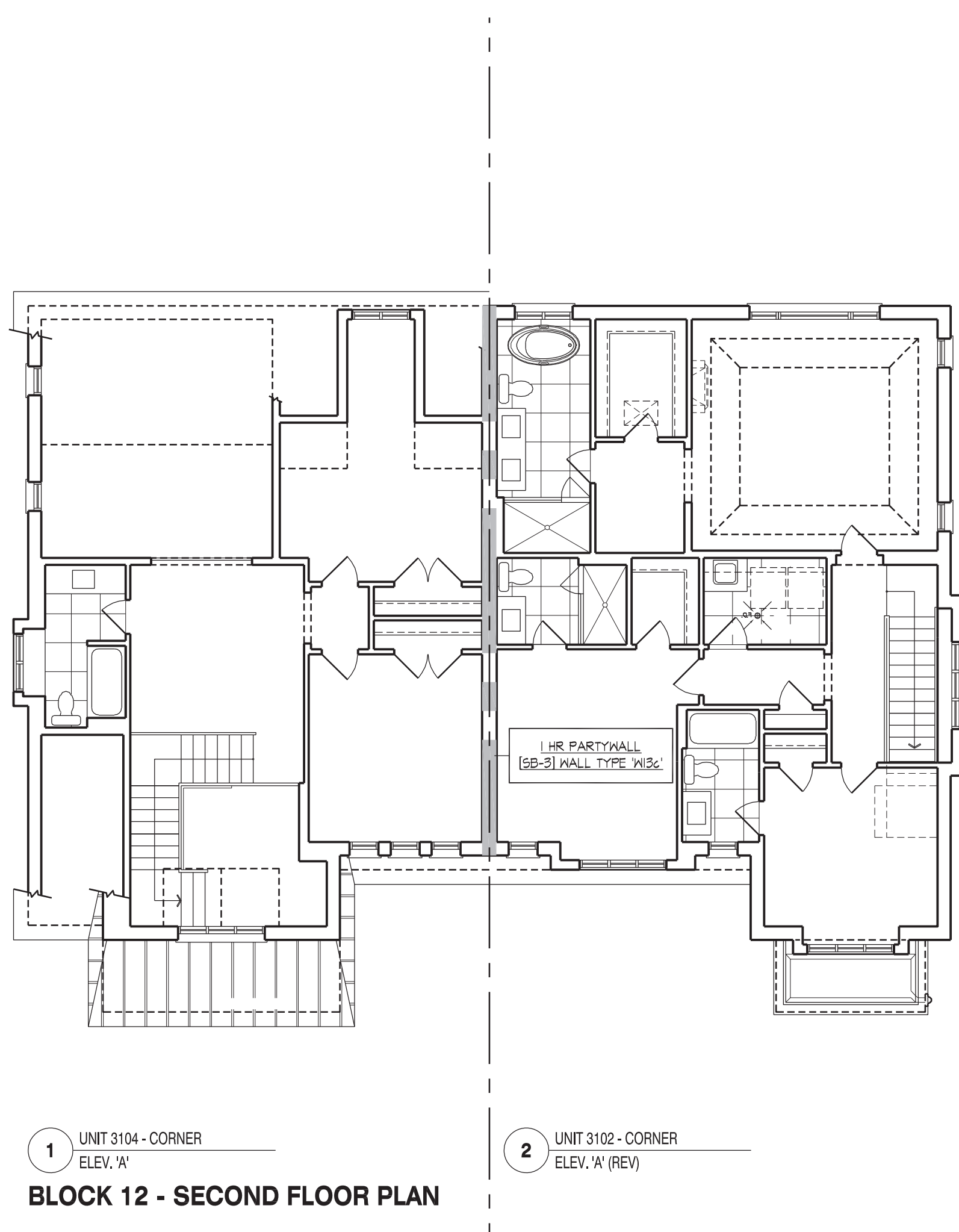
BLOCK 12 - ROOF PLAN



1 UNIT 3104 - CORNER
ELEV. 'A'

2 UNIT 3102 - CORNER
ELEV. 'A' (REV)

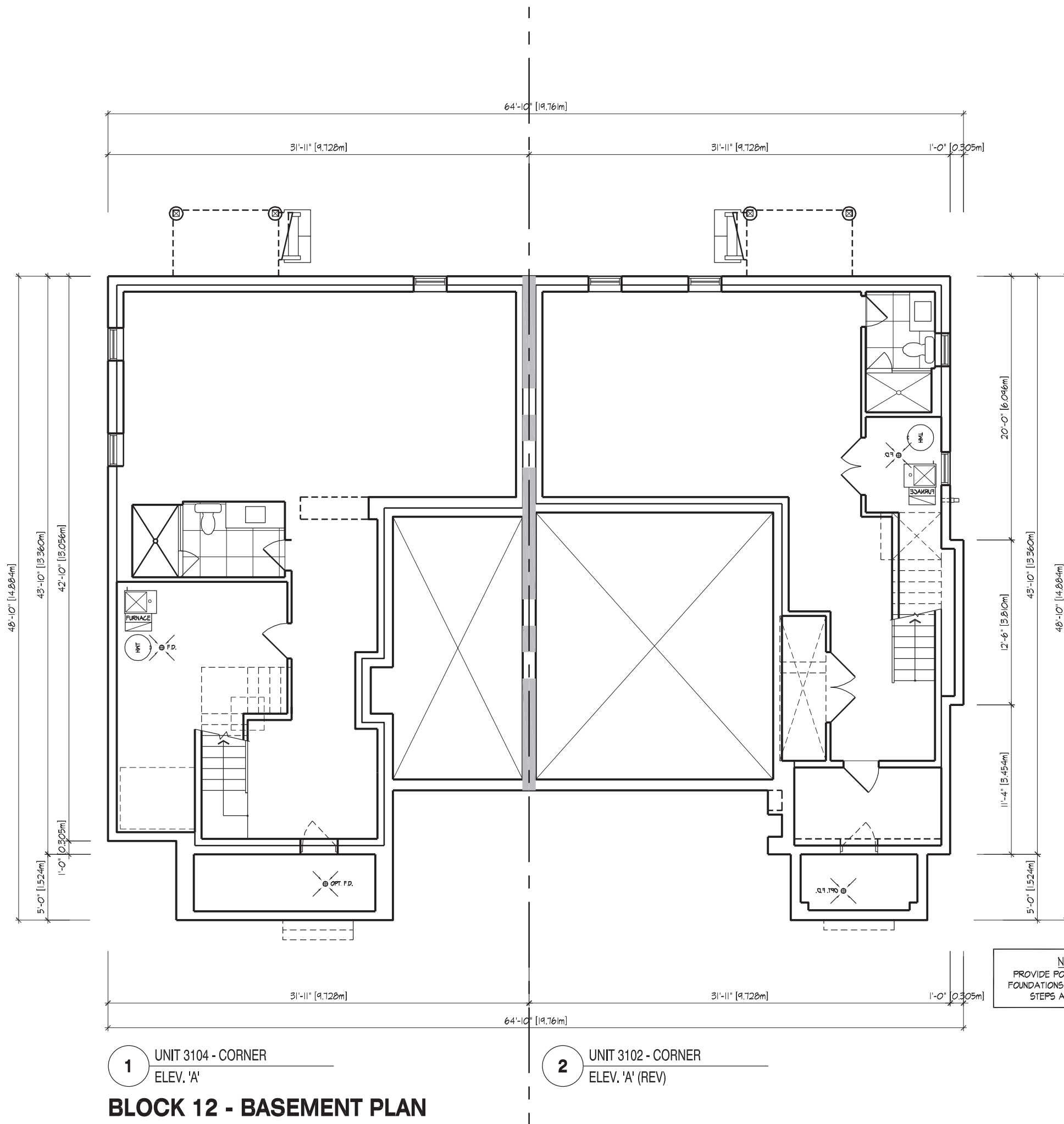
BLOCK 12 - GROUND FLOOR PLAN



1 UNIT 3104 - CORNER
ELEV. 'A'

2 UNIT 3102 - CORNER
ELEV. 'A' (REV)

BLOCK 12 - SECOND FLOOR PLAN



1 UNIT 3104 - CORNER
ELEV. 'A'

2 UNIT 3102 - CORNER
ELEV. 'A' (REV)

BLOCK 12 - BASEMENT PLAN



FOR STRUCTURAL ONLY, EXCLUDING
ENGINEERED ROOF TRUSS, FLOOR
JOIST, AND FLOOR LVL BEAM DESIGN.

BUILDING AREA 2807.68 sq ft
INCLUDING COLD CELLARS 260.84 sq m

GENERAL NOTES

1. PROVIDE FIRESTOPS AS REQUIRED BY O.B.C. 9.10.16
2. REFER TO UNIT WORKING DRAWINGS, ENGINEERS DRAWINGS AND SITEPLAN FOR ADDITIONAL INFORMATION AND VERIFICATION.
3. REFER TO ROOF TRUSS MANUFACTURERS DRAWINGS FOR LAYOUT, SPACING, INSTALLATION DETAILS AND HANGER SIZES.
4. CONTRACTOR MUST VERIFY ALL DIMENSIONS ON THE JOB REPORT ANY DISCREPANCIES TO HUNT DESIGN ASSOCIATES INC. (H.D.A.I.) BEFORE PROCEEDING WITH THE WORK. ALL DRAWINGS AND SPECIFICATIONS ARE INSTRUMENTS OF SERVICE AND ARE THE PROPERTY OF H.D.A.I..
5. COMBUSTIBLE PROJECTIONS ON THE EXTERIOR OF A WALL THAT ARE MORE THAN 1100mm (3 ft 3 in) ABOVE GROUND SHALL NOT BE PERMITTED WITHIN 1.2m (3 ft 11 in) OF A PROPERTY LINE OR CENTRE LINE OF A PUBLIC WAY OR 2.4m (7 ft 10 in) OF A COMBUSTIBLE PROJECTION ON ANOTHER BUILDING ON THE SAME PROPERTY AS PER PART 9 SECTION 9.10.14.5.(5)

WALL TYPE LEGEND

FRR	LINE TYPE	DETAILS
45 MIN		SECTION 1, 2 & 3
60 MIN		SECTION 8 (BLOCK SECTION 9 (WOOD STUDS))
120 MIN		SECTION 10

DETAILS

NO.	TITLE
01-1-1	MASONRY VENEER, 24" STUDS, 2 STOREY WALL SECTION
01-1-3	MASONRY VENEER, 24" STUDS, 1 STOREY GARAGE WALL SECTION
08-8-1	TYP. 1 HR. PARTY WALL SECTION AT GARAGE, PARALLEL ROOF TRUSSES, IF CONIC. BLOCK
08-8-2	TYP. 1 HR. PARTY WALL SECTION AT GARAGE, PARALLEL ROOF TRUSSES, IF CONIC. BLOCK
08-8-3	TYP. UTILITY FROST PROTECTION US OF GARAGE CEILING SPACE, TYP. BLOCK PARTYWALL
08-8-5	TYP. IF BLOCK PARTYWALL AT OPEN 2 STOREY CONDITION
08-8-6	IF BLOCK PARTYWALL, BRICK VENEER, FLUSH UNIT
08-8-5	IF BLOCK PARTYWALL, BRICK VENEER, STAGGERED UNIT
08-8-4	IF BLOCK PARTYWALL, FLUSH AT GARAGE, BRICK VENEER
08-8-4	IF BLOCK PARTYWALL, STAGGERED UNIT & GARAGE, BRICK VENEER
08-8-4	IF BLOCK PARTYWALL, STAGGERED GARAGES, BRICK VENEER
08-8-4	REQUIRED FIRE STOPPING AT SOFFITS SECTION
10-10-1	TYP. 2 HR. FIREWALL SECTION PARALLEL ROOF TRUSSES - IF FOUNDATION
10-10-2	TYP. 2 HR. FIREWALL SECTION PARALLEL ROOF TRUSSES - IF WAVED FLOOR LEVELS
10-10-3	TYP. 2 HR. FIREWALL, BRICK VENEER, STAGGERED UNIT
10-10-3	TYP. 2 HR. FIREWALL, BRICK VENEER AT PORCH
10-10-7	TYP. 2 HR. FIREWALL, BRICK VENEER, FLUSH UNIT
10-10-7	TYP. 2 HR. FIREWALL PROJECTION, BRICK VENEER, @ DECK PARKING

COMPLIANCE PACKAGE

A1

It is the builder's complete responsibility to ensure that all plans submitted for approval fully comply with the Architectural Guidelines and all applicable regulations and requirements including zoning provisions and any provisions in the subdivision agreement. The Control Authority is not responsible in any way for issuing or approving site (lot) plans, or building drawings with respect to zoning or building codes or permit matter or that any house can be properly built or located on its lot.

This is to certify that these plans comply with the applicable Architectural Design Guidelines approved by the City of VAUGHAN.

JOHN C. WILLIAMS LTD., ARCHITECT
ARCHITECTURAL CONTROL REVIEW
(NOT PROFESSIONAL)

APPROVED BY:
DATE: JUL 20, 2022
This stamp certifies compliance with the applicable Design Guidelines only and bears no further professional responsibility.

5.			
4.	RE-ISSUED FOR PERMIT	202.07.07	AW
3.	REVISED AS PER GRADING AND COMMENTS	2022.01.17	WT
2.	ISSUED FOR PERMIT	2022.02.18	AW
1.	ISSUED FOR PROPOSING	2021.07.21	NEA
NO.	DESCRIPTION	YYYY.MM.DD	BY

REVISIONS

THE ENGINEER HAS REVIEWED AND TAKES RESPONSIBILITY FOR THE DESIGN AND HAS THE QUALIFICATIONS AND MEETS THE REQUIREMENTS SET OUT IN THE ONTARIO BUILDING CODE TO BE A DESIGNER.

QUALIFICATION INFORMATION		
NAME	Allen Whiting	23177
REGISTRATION INFORMATION	REVISE	19965
HUNT DESIGN ASSOCIATES INC.		

HUNT DESIGN ASSOCIATES INC.
www.hunt-design.ca
89565 Woodbine Ave., Markham, ON L3R 0J7
T 905.737.5133 F 905.737.7326 email: hda@hunt-design.ca

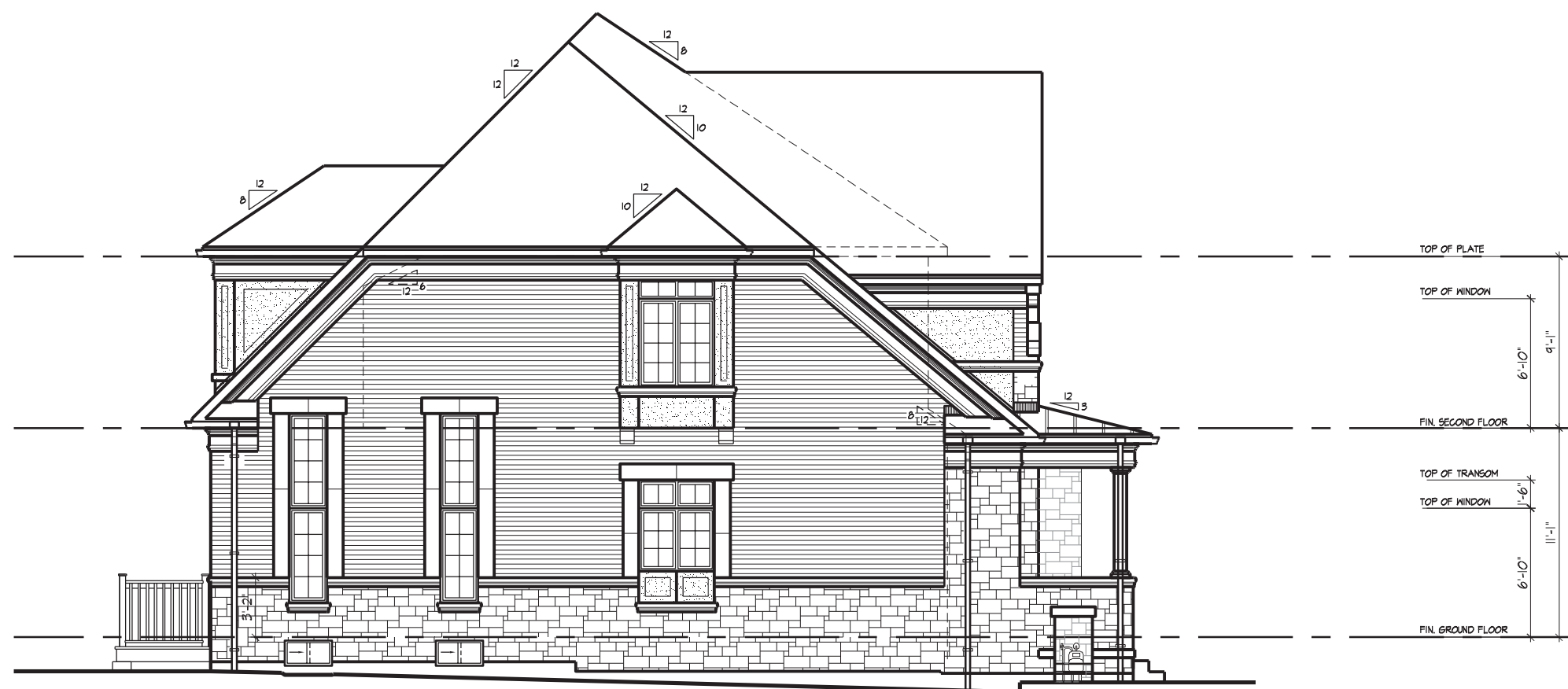
GOLDPARK HOMES - 217014
PINE VALLEY DRIVE, VAUGHAN, ONTARIO

BLOCK 12
LOTS 1 to 2

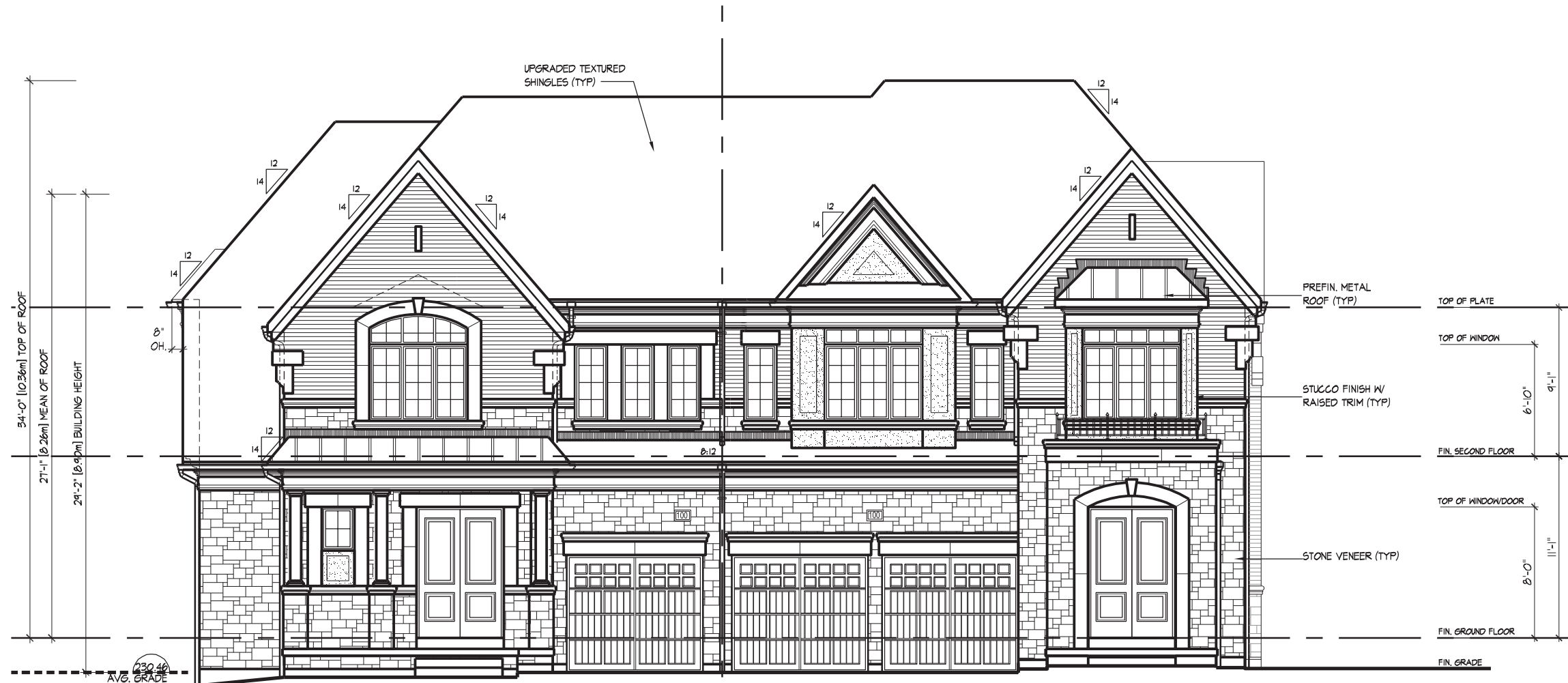
BLOCK PLANS

	REV.2022.07.07
Scale	1/8"=1'-0"
Drawn By	AW
File Name	NEA
Page Number	217014WT-BLOCKS 12 to 17

\\HUNTDESIGN\1\BID\JUL 13\22\23\24\1\ARCHITECT\BLOCKS\217014\GOLDPARK\BLOCKS\217014WT-BLOCKS 12 TO 17.DWG



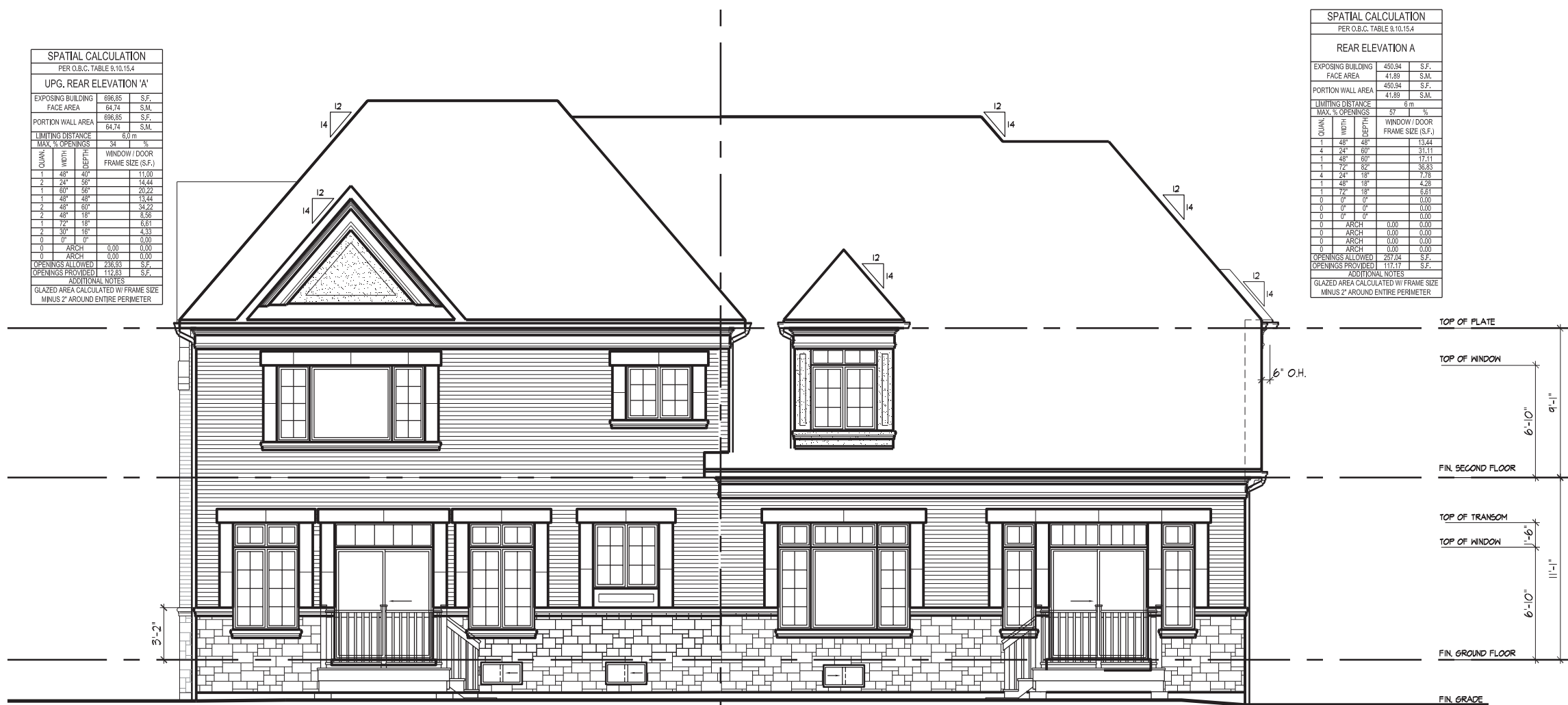
1 UNIT 3104 - CORNER
ELEV. 'A'
BLOCK 12 - LEFT SIDE ELEVATION



1 UNIT 3104 - CORNER
ELEV. 'A'
BLOCK 12 - FRONT ELEVATION

2 UNIT 3102 - CORNER
ELEV. 'A' (REV)

NOTE:
ALL PORCH STEPS TO BE POURED IN PLACE
CONCRETE W/ MASONRY VENEER ON THE SIDES
FOR GRADING CONDITIONS OF 3 RISERS OR
LESS, THE USE OF LANDSCAPE STEPS MAY BE
CONSIDERED.



2 UNIT 3102 - CORNER
ELEV. 'A' (REV)
BLOCK 12 - REAR ELEVATION

1 UNIT 3104 - CORNER
ELEV. 'A'



2 UNIT 3102 - CORNER
ELEV. 'A' (REV)
BLOCK 12 - RIGHT SIDE ELEVATION

BUILDING AREA 2807.68 sq ft
INCLUDING COLD CELLARS 260.84 sq m

GENERAL NOTES

1. PROVIDE FIRESTOPS AS REQUIRED BY O.B.C. 9.10.16
2. REFER TO UNIT WORKING DRAWINGS, ENGINEERS DRAWINGS AND SITEPLAN FOR ADDITIONAL INFORMATION AND VERIFICATION.
3. REFER TO ROOF TRUSS MANUFACTURERS DRAWINGS FOR LAYOUT, SPACING, INSTALLATION DETAILS AND HANGER SIZES.
4. CONTRACTOR MUST VERIFY ALL DIMENSIONS ON THE JOB REPORT ANY DISCREPANCIES TO HUNT DESIGN ASSOCIATES INC. (H.D.A.I.) BEFORE PROCEEDING WITH THE WORK. ALL DRAWINGS AND SPECIFICATIONS ARE INSTRUMENTS OF SERVICE AND ARE THE PROPERTY OF H.D.A.I..
5. COMBUSTIBLE PROJECTIONS ON THE EXTERIOR OF A WALL THAT ARE MORE THAN 1100mm (3 ft 3 in) ABOVE GROUND SHALL NOT BE PERMITTED WITHIN 1.2m (3 ft 11 in) OF A PROPERTY LINE OR CENTRE LINE OF A PUBLIC WAY OR 2.4m (7 ft 10 in) OF A COMBUSTIBLE PROJECTION ON ANOTHER BUILDING ON THE SAME PROPERTY AS PER PART 9 SECTION 9.10.14.5.(5)

WALL TYPE LEGEND

FRR	LINE TYPE	DETAILS
45 MIN		SECTION 1, 2 & 3
60 MIN		SECTION 8 (BLOCK SECTION 9 (WOOD STUDS))
120 MIN		SECTION 10

DETAILS

NO.	TITLE
01-14	MASONRY VENEER, 2"x4" STUDS, 2 STOREY WALL SECTION
01-13	MASONRY VENEER, 2"x4" STUDS, 1 STOREY GARAGE WALL SECTION
08-81	TYP. 1 HR. PARTY WALL SECTION AT GARAGE, PARALLEL ROOF TRUSSES, 1" CONIC. BLOCK
08-82	TYP. 1 HR. PARTY WALL SECTION AT GARAGE, PARALLEL ROOF TRUSSES, 1" CONIC. BLOCK
08-83	TYP. 1 HR. PARTY WALL SECTION AT GARAGE, PARALLEL ROOF TRUSSES, 1" CONIC. BLOCK
08-84	TYP. 1 HR. PARTY WALL SECTION AT GARAGE, PARALLEL ROOF TRUSSES, 1" CONIC. BLOCK
08-85	TYP. 1 HR. PARTY WALL SECTION AT GARAGE, PARALLEL ROOF TRUSSES, 1" CONIC. BLOCK
08-86	TYP. 1 HR. PARTY WALL SECTION AT GARAGE, PARALLEL ROOF TRUSSES, 1" CONIC. BLOCK
08-87	TYP. 1 HR. PARTY WALL SECTION AT GARAGE, PARALLEL ROOF TRUSSES, 1" CONIC. BLOCK
08-88	TYP. 1 HR. PARTY WALL SECTION AT GARAGE, PARALLEL ROOF TRUSSES, 1" CONIC. BLOCK
08-89	TYP. 1 HR. PARTY WALL SECTION AT GARAGE, PARALLEL ROOF TRUSSES, 1" CONIC. BLOCK
08-90	TYP. 1 HR. PARTY WALL SECTION AT GARAGE, PARALLEL ROOF TRUSSES, 1" CONIC. BLOCK
08-91	TYP. 1 HR. PARTY WALL SECTION AT GARAGE, PARALLEL ROOF TRUSSES, 1" CONIC. BLOCK
08-92	TYP. 1 HR. PARTY WALL SECTION AT GARAGE, PARALLEL ROOF TRUSSES, 1" CONIC. BLOCK
08-93	TYP. 1 HR. PARTY WALL SECTION AT GARAGE, PARALLEL ROOF TRUSSES, 1" CONIC. BLOCK
08-94	TYP. 1 HR. PARTY WALL SECTION AT GARAGE, PARALLEL ROOF TRUSSES, 1" CONIC. BLOCK
08-95	TYP. 1 HR. PARTY WALL SECTION AT GARAGE, PARALLEL ROOF TRUSSES, 1" CONIC. BLOCK
08-96	TYP. 1 HR. PARTY WALL SECTION AT GARAGE, PARALLEL ROOF TRUSSES, 1" CONIC. BLOCK
08-97	TYP. 1 HR. PARTY WALL SECTION AT GARAGE, PARALLEL ROOF TRUSSES, 1" CONIC. BLOCK
08-98	TYP. 1 HR. PARTY WALL SECTION AT GARAGE, PARALLEL ROOF TRUSSES, 1" CONIC. BLOCK
08-99	TYP. 1 HR. PARTY WALL SECTION AT GARAGE, PARALLEL ROOF TRUSSES, 1" CONIC. BLOCK
08-100	TYP. 1 HR. PARTY WALL SECTION AT GARAGE, PARALLEL ROOF TRUSSES, 1" CONIC. BLOCK
10-101	TYP. 2 HR. FIREWALL SECTION PARALLEL ROOF TRUSSES - 1" CONIC. BLOCK
10-102	TYP. 2 HR. FIREWALL SECTION PARALLEL ROOF TRUSSES - 1" CONIC. BLOCK
10-103	TYP. 2 HR. FIREWALL SECTION PARALLEL ROOF TRUSSES - 1" CONIC. BLOCK
10-104	TYP. 2 HR. FIREWALL SECTION PARALLEL ROOF TRUSSES - 1" CONIC. BLOCK
10-105	TYP. 2 HR. FIREWALL SECTION PARALLEL ROOF TRUSSES - 1" CONIC. BLOCK
10-106	TYP. 2 HR. FIREWALL SECTION PARALLEL ROOF TRUSSES - 1" CONIC. BLOCK
10-107	TYP. 2 HR. FIREWALL SECTION PARALLEL ROOF TRUSSES - 1" CONIC. BLOCK
10-108	TYP. 2 HR. FIREWALL SECTION PARALLEL ROOF TRUSSES - 1" CONIC. BLOCK
10-109	TYP. 2 HR. FIREWALL SECTION PARALLEL ROOF TRUSSES - 1" CONIC. BLOCK
10-110	TYP. 2 HR. FIREWALL SECTION PARALLEL ROOF TRUSSES - 1" CONIC. BLOCK
10-111	TYP. 2 HR. FIREWALL SECTION PARALLEL ROOF TRUSSES - 1" CONIC. BLOCK
10-112	TYP. 2 HR. FIREWALL SECTION PARALLEL ROOF TRUSSES - 1" CONIC. BLOCK
10-113	TYP. 2 HR. FIREWALL SECTION PARALLEL ROOF TRUSSES - 1" CONIC. BLOCK
10-114	TYP. 2 HR. FIREWALL SECTION PARALLEL ROOF TRUSSES - 1" CONIC. BLOCK
10-115	TYP. 2 HR. FIREWALL SECTION PARALLEL ROOF TRUSSES - 1" CONIC. BLOCK
10-116	TYP. 2 HR. FIREWALL SECTION PARALLEL ROOF TRUSSES - 1" CONIC. BLOCK
10-117	TYP. 2 HR. FIREWALL SECTION PARALLEL ROOF TRUSSES - 1" CONIC. BLOCK
10-118	TYP. 2 HR. FIREWALL SECTION PARALLEL ROOF TRUSSES - 1" CONIC. BLOCK
10-119	TYP. 2 HR. FIREWALL SECTION PARALLEL ROOF TRUSSES - 1" CONIC. BLOCK
10-120	TYP. 2 HR. FIREWALL SECTION PARALLEL ROOF TRUSSES - 1" CONIC. BLOCK

COMPLIANCE PACKAGE

A1

It is the builder's complete responsibility to ensure that all items submitted for approval fully comply with the Architectural Guidelines and all applicable regulations and requirements including zoning provisions and any provisions in the applicable zoning by-law. The Control Authority is not responsible in any way for issuing or approving any building permit or building code or permit matter or that any house can be properly built or located on the lot.

This is to certify that these plans comply with the applicable Architectural Design Guidelines approved by the City of Vaughan.

JOHN G. WILLIAMS LTD., ARCHITECT
ARCHITECTURAL CONTROL REVIEW
AND APPROVAL
APPROVED BY: [Signature]
DATE: JUL 25, 2022
This stamp certifies compliance with the applicable Design Guidelines only and bears no further professional responsibility.

5.	RE-ISSUED FOR PERMIT	2022.07.07	AW
4.	REVISED AS PER GRADING AND COMMENTS	2022.01.17	WT
3.	ISSUED FOR PERMIT	2022.02.18	AW
2.	ISSUED FOR PERMIT	2021.07.21	NEA
1.	ISSUED FOR PERMIT	2021.07.21	NEA

NO.	DESCRIPTION	DATE	BY
1.	ISSUED FOR PERMIT	2021.07.21	NEA
2.	ISSUED FOR PERMIT	2021.07.21	NEA
3.	ISSUED FOR PERMIT	2022.02.18	AW
4.	REVISED AS PER GRADING AND COMMENTS	2022.01.17	WT
5.	RE-ISSUED FOR PERMIT	2022.07.07	AW

HUNT DESIGN ASSOCIATES INC.
www.hunt-design.ca
905-660-0000
905-660-0001
905-660-0002
905-660-0003
905-660-0004
905-660-0005
905-660-0006
905-660-0007
905-660-0008
905-660-0009
905-660-0010
905-660-0011
905-660-0012
905-660-0013
905-660-0014
905-660-0015
905-660-0016
905-660-0017
905-660-0018
905-660-0019
905-660-0020
905-660-0021
905-660-0022
905-660-0023
905-660-0024
905-660-0025
905-660-0026
905-660-0027
905-660-0028
905-660-0029
905-660-0030
905-660-0031
905-660-0032
905-660-0033
905-660-0034
905-660-0035
905-660-0036
905-660-0037
905-660-0038
905-660-0039
905-660-0040
905-660-0041
905-660-0042
905-660-0043
905-660-0044
905-660-0045
905-660-0046
905-660-0047
905-660-0048
905-660-0049
905-660-0050
905-660-0051
905-660-0052
905-660-0053
905-660-0054
905-660-0055
905-660-0056
905-660-0057
905-660-0058
905-660-0059
905-660-0060
905-660-0061
905-660-0062
905-660-0063
905-660-0064
905-660-0065
905-660-0066
905-660-0067
905-660-0068
905-660-0069
905-660-0070
905-660-0071
905-660-0072
905-660-0073
905-660-0074
905-660-0075
905-660-0076
905-660-0077
905-660-0078
905-660-0079
905-660-0080
905-660-0081
905-660-0082
905-660-0083
905-660-0084
905-660-0085
905-660-0086
905-660-0087
905-660-0088
905-660-0089
905-660-0090
905-660-0091
905-660-0092
905-660-0093
905-660-0094
905-660-0095
905-660-0096
905-660-0097
905-660-0098
905-660-0099
905-660-0100
905-660-0101
905-660-0102
905-660-0103
905-660-0104
905-660-0105
905-660-0106
905-660-0107
905-660-0108
905-660-0109
905-660-0110
905-660-0111
905-660-0112
905-660-0113
905-660-0114
905-660-0115
905-660-0116
905-660-0117
905-660-0118
905-660-0119
905-660-0120
905-660-0121
905-660-0122
905-660-0123
905-660-0124
905-660-0125
905-660-0126
905-660-0127
905-660-0128
905-660-0129
905-660-0130
905-660-0131
905-660-0132
905-660-0133
905-660-0134
905-660-0135
905-660-0136
905-660-0137
905-660-0138
905-660-0139
905-660-0140
905-660-0141
905-660-0142
905-660-0143
905-660-0144
905-660-0145
905-660-0146
905-660-0147
905-660-0148
905-660-0149
905-660-0150
905-660-0151
905-660-0152
905-660-0153
905-660-0154
905-660-0155
905-660-0156
905-660-0157
905-660-0158
905-660-0159
905-660-0160
905-660-0161
905-660-0162
905-660-0163
905-660-0164
905-660-0165
905-660-0166
905-660-0167
905-660-0168
905-660-0169
905-660-0170
905-660-0171
905-660-0172
905-660-0173
905-660-0174
905-660-0175
905-660-0176
905-660-0177
905-660-0178
905-660-0179
905-660-0180
905-660-0181
905-660-0182
905-660-0183
905-660-0184
905-660-0185
905-660-0186
905-660-0187
905-660-0188
905-660-0189
905-660-0190
905-660-0191
905-660-0192
905-660-0193
905-660-0194
905-660-0195
905-660-0196
905-660-0197
905-660-0198
905-660-0199
905-660-0200
905-660-0201
905-660-0202
905-660-0203
905-660-0204
905-660-0205
905-660-0206
905-660-0207
905-660-0208
905-660-0209
905-660-0210
905-660-0211
905-660-0212
905-660-0213
905-660-0214
905-660-0215
905-660-0216
905-660-0217
905-660-0218
905-660-0219
905-660-0220
905-660-0221
905-660-0222
905-660-0223
905-660-0224
905-660-0225
905-660-0226
905-660-0227
905-660-0228
905-660-0229
905-660-0230
905-660-0231
905-660-0232
905-660-0233
905-660-0234
905-660-0235
905-660-0236
905-660-0237
905-660-0238
905-660-0239
905-660-0240
905-660-0241
905-660-0242
905-660-0243
905-660-0244
905-660-0245
905-660-0246
905-660-0247
905-660-0248
905-660-0249
905-660-0250
905-660-0251
905-660-0252
905-660-0253
905-660-0254
905-660-0255
905-660-0256
905-660-0257
905-660-0258
905-660-0259
905-660-0260
905-660-0261
905-660-0262
905-660-0263
905-660-0264
905-660-0265
905-660-0266
905-660-0267
905-660-0268
905-660-0269
905-660-0270
905-660-0271
905-660-0272
905-660-0273
905-660-0274
905-660-0275
905-660-0276
905-660-0277
905-660-0278
905-660-0279
905-660-0280
905-660-0281
905-660-0282
905-660-0283
905-660-0284
905-660-0285
905-660-0286
905-660-0287
905-660-0288
905-660-0289
905-660-0290
905-660-0291
905-660-0292
905-660-0293
905-660-0294
905-660-0295
905-660-0296
905-660-0297
905-660-0298
905-660-0299
905-660-0300
905-660-0301
905-660-0302
905-660-0303
905-660-0304
905-660-0305
905-660-0306
905-660-0307
905-660-0308
905-660-0309
905-660-0310
905-660-0311
905-660-0312
905-660-0313
905-660-0314
905-660-0315
905-660-0316
905-660-0317
905-660-0318
905-660-0319
905-660-0320
905-660-0321
905-660-0322
905-660-0323
905-660-0324
905-660-0325
905-660-0326
905-660-0327
905-660-0328
905-660-0329
905-660-0330
905-660-0331
905-660-0332
905-660-0333
905-660-0334
905-660-0335
905-660-0336
905-660-0337
905-660-0338
905-660-0339
905-660-0340
905-660-0341
905-660-0342
905-660-0343
905-660-0344
905-660-0345
905-660-0346
905-660-0347
905-660-0348
905-660-0349
905-660-0350
905-660-0351
905-660-0352
905-660-0353
905-660-0354
905-660-0355
905-660-0356
905-660-0357
905-660-0358
905-660-0359
905-660-0360
905-660-0361
905-660-0362
905-660-0363
905-660-0364
905-660-0365
905-660-0366
905-660-0367
905-660-0368
905-660-0369
905-660-0370
905-660-0371
905-660-0372
905-660-0373
905-660-0374
905-660-0375
905-660-0376
905-660-0377
905-660-0378
905-660-0379
905-660-0380
905-660-0381
905-660-0382
905-660-0383
905-660-0384
905-660-0385
905-660-0386
905-660-0387
905-660-0388
905-660-0389
905-660-0390
905-660-0391
905-660-0392
905-660-0393
905-660-0394
905-660-0395
905-660-0396
905-660-0397
905-660-0398
905-660-0399
905-660-0400
905-660-0401
905-660-0402
905-660-0403
905-660-0404
905-660-0405
905-660-0406
905-660-0407
905-660-0408
905-660-0409
905-660-0410
905-660-0411
905-660-0412
905-660-0413
905-660-0414
905-660-0415
905-660-0416
905-660-0417
905-660-0418
905-660-0419
905-660-0420
905-660-0421
905-660-0422
905-660-0423
905-660-0424
905-660-0425
905-660-0426
905-660-0427
905-660-0428
905-660-0429
905-660-0430
905-660-0431
905-660-0432
905-660-0433
905-660-0434
905-660-0435
905-660-0436
905-660-0437
905-660-0438
905-660-0439
905-660-0440
905-660-0441
905-660-0442
905-660-0443
905-660-0444
905-660-0445
905-660-0446
905-660-0447
905-660-0448
905-660-0449
905-660-0450
905-660-0451
905-660-0452
905-660-0453
905-660-0454
905-660-0455
905-660-0456
905-660-0457
905-660-0458
905-660-0459
905-660-0460
905-660-0461
905-660-0462
905-660-0463
905-660-0464
905-660-0465
905-660-0466
905-660-0467
905-660-0468
905-660-0469
905-660-0470
905-660-0471
905-660-0472
905-660-0473
905-660-0474
905-660-0475
905-660-0476
905-660-0477
905-660-0478
905-660-0479
905-660-0480
905-660-0481
905-660-0482
905-660-0483
905-660-0484
905-660-0485
905-660-0486
905-660-0487
905-660-0488
905-660-0489
905-660-0490
905-660-0491
905-660-0492
905-660-0493
905-660-0494
905-660-0495
905-660-0496
905-660-0497
905-660-0498
905-660-0499
905-660-0500
905-660-0501
905-660-0502
905-660-0503
905-660-0504
905-660-0505
905-660-0506
905-660-0507
905-660-0508
905-660-0509
905-660-0510
905-660-0511
905-660-0512
905-660-0513
905-660-0514
905-660-0515
905-660-0516
905-660-0517
905-660-0518
905-660-0519
905-660-0520
905-660-0521
905-660-0522
905-660-0523
905-660-0524
905-660-0525
905-660-0526
905-660-0527
905-660-0528
905-660-0529
905-660-0530
905-660-0531
905-660-0532
905-660-0533
905-660-0534
905-660-0535
905-660-0536
905-660-0537
905-660-0538
905-660-0539
905-660-0540
905-660-0541
905-660-0542
905-660-0543
905-660-0544
905-660-0545
905-660-0546
905-660-0547
905-660-0548
905-660-0549
905-660-0550
905-660-0551
905-660-0552
905-660-0553
905-660-0554
905-660-0555
905-660-0556
905-660-0557
905-660-0558
905-660-0559
905-660-0560
905-660-0561
905-660-0562
905-660-0563
905-660-0564
905-660-0565
905-660-0566
905-660-0567
905-660-0568
905-660-0569