

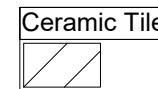
Products				
PlotID	Length	Product	Plies	Net Qty
B1	4-00-00	11 7/8" NI-20	1	1
B2	13-00-00	11 7/8" NI-20	1	1
B3	1-00-00	11 7/8" NI-20	1	1
B4	3-00-00	11 7/8" NI-20	2	2
B5	6-00-00	11 7/8" NI-20	1	1
B6	17-00-00	1-3/4" x 11-7/8" VERSA-LAM® 2.0 3100 SP	1	1
B7	7-00-00	1-3/4" x 11-7/8" VERSA-LAM® 2.0 3100 SP	2	2
B8	17-00-00	11 7/8" NI-20	2	2
B9	8-00-00	11 7/8" NI-20	2	4
B10	15-00-00	1-3/4" x 11-7/8" VERSA-LAM® 2.0 3100 SP	2	2
B11	18-00-00	1-3/4" x 11-7/8" VERSA-LAM® 2.0 3100 SP	3	3
Ca1	60-00-00	1 1/8" x 11 7/8" Rim Board	1	1
J1	15-00-00	11 7/8" NI-20	1	7
J2	13-00-00	11 7/8" NI-20	1	6
J3	11-00-00	11 7/8" NI-20	1	10
J4	8-00-00	11 7/8" NI-20	1	3
J5	5-00-00	11 7/8" NI-20	1	2
J6	2-00-00	11 7/8" NI-20	1	1
J7	21-00-00	11 7/8" NI-40x	1	12

Connector Summary			
PlotID	Qty	Manuf	Product
H1	1		HGUS410
H2	3		HU310
H3	1		HUC310
H4	1		HUC310-2
H5	1		HUC410
H6	18		LT251188
H7	3		MIT311.88-2

RIMBOARD
1- 1/8" X 11 7/8" O.S.B.
SUBFLOOR - 3/4" NAILED & GLUED*
APP - AS PER PLAN
BBO - BEAM BY OTHERS

DESIGN LOADING:

LIVE LOAD = 40 PSF  
DEAD LOAD = 15 PSF  
DEAD LOAD @TILE = 20 PSF



Ceramic tile application as per O.B.C. 9.30.6

Provide I-Joist Blocking between cantilevered joists (along bearing).

Blocking panels are required over all interior supports  
Squash blocks are required under concentrated loads.

MODEL: 3104 - EL.A+B  
+OPT. LOGGIA & UPG.

REVISION: May 2, 2022

## Second Floor Framing

Do not scale - refer to architectural plans for dimensions

SE039875 - SE039892

JT/PL: 45147/117177

Builder: Gold Park

Location: Vaughan

Designer: NL

Alpa Roof Trusses Inc.

Salesperson: Derek

LI: (333182)343865\*

Project: Pine Valley PH.2

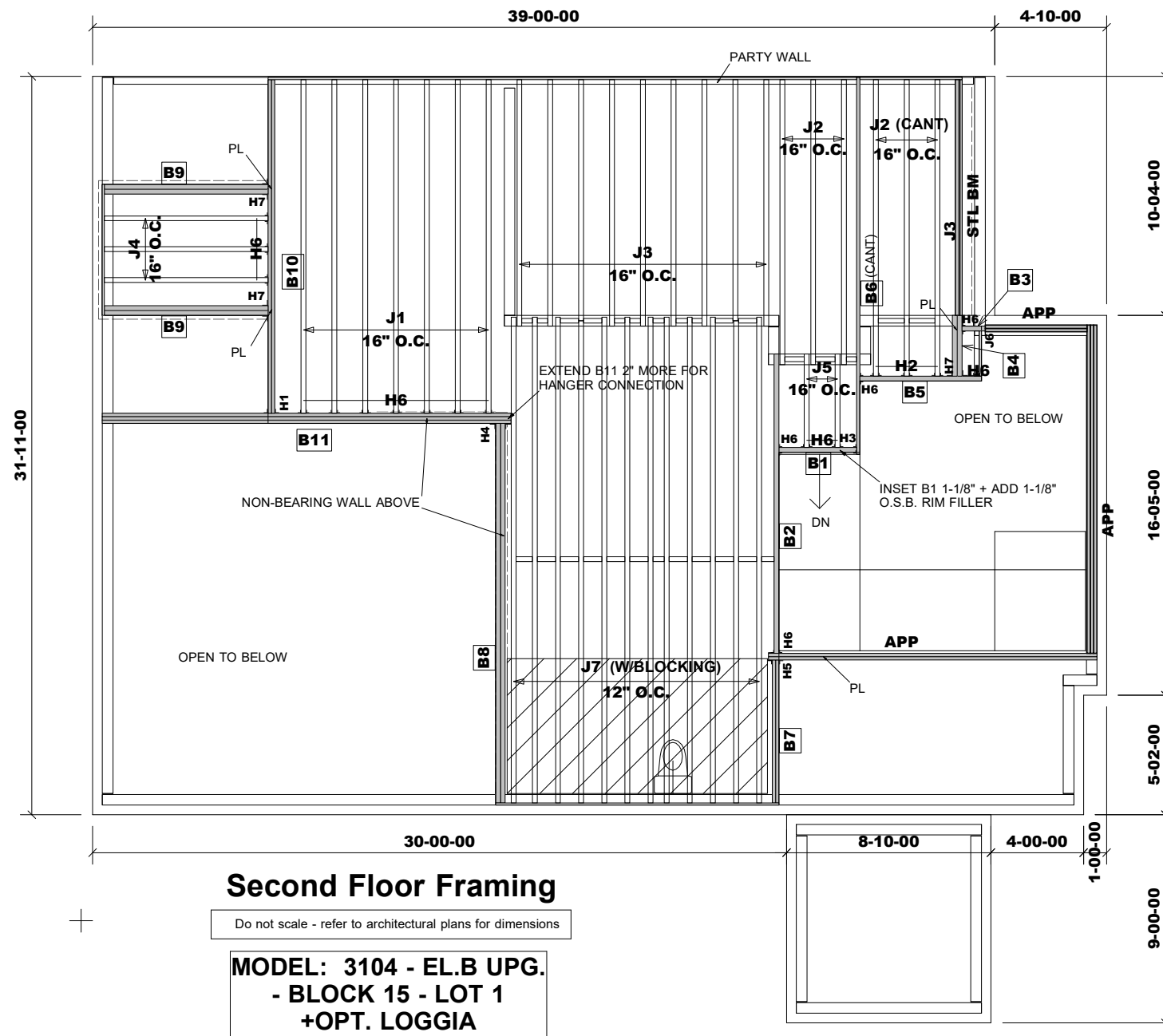
Date: November 5, 2021

Sheet: 1 of 2

Maple, Ontario

Home Lumber





## Second Floor Framing

Do not scale - refer to architectural plans for dimensions

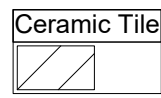
**MODEL: 3104 - EL.B UPG.**  
**- BLOCK 15 - LOT 1**  
**+OPT. LOGGIA**

Products				
PlotID	Length	Product	Plies	Net Qty
B1	4-00-00	11 7/8" NI-20	1	1
B2	13-00-00	11 7/8" NI-20	1	1
B3	1-00-00	11 7/8" NI-20	1	1
B4	3-00-00	11 7/8" NI-20	2	2
B5	6-00-00	11 7/8" NI-20	1	1
B6	17-00-00	1-3/4" x 11-7/8" VERSA-LAM® 2.0 3100 SP	1	1
B7	7-00-00	1-3/4" x 11-7/8" VERSA-LAM® 2.0 3100 SP	2	2
B8	17-00-00	11 7/8" NI-20	2	2
B9	8-00-00	11 7/8" NI-20	2	4
B10	15-00-00	1-3/4" x 11-7/8" VERSA-LAM® 2.0 3100 SP	2	2
B11	18-00-00	1-3/4" x 11-7/8" VERSA-LAM® 2.0 3100 SP	3	3
Ca1	60-00-00	1 1/8" x 11 7/8" Rim Board	1	1
J1	15-00-00	11 7/8" NI-20	1	7
J2	13-00-00	11 7/8" NI-20	1	6
J3	11-00-00	11 7/8" NI-20	1	10
J4	8-00-00	11 7/8" NI-20	1	3
J5	5-00-00	11 7/8" NI-20	1	2
J6	2-00-00	11 7/8" NI-20	1	1
J7	21-00-00	11 7/8" NI-40x	1	12

Connector Summary			
PlotID	Qty	Manuf	Product
H1	1		HGUS410
H2	3		HU310
H3	1		HUC310
H4	1		HUC310-2
H5	1		HUC410
H6	18		LT251188
H7	3		MIT311.88-2

**RIMBOARD**  
1- 1/8" X 11 7/8" O.S.B.  
**SUBFLOOR - 3/4" NAILED & GLUED\***  
  
APP - AS PER PLAN  
BBO - BEAM BY OTHERS

**DESIGN LOADING:**  
  
**LIVE LOAD = 40 PSF**  
**DEAD LOAD = 15 PSF**  
**DEAD LOAD @TILE = 20 PSF**



Ceramic tile application as per O.B.C. 9.30.6  
  
Provide I-Joist Blocking between cantilevered joists (along bearing).  
  
Blocking panels are required over all interior supports  
Squash blocks are required under concentrated loads.

JT/PL: 45147/117177  
LI: (333182)343865\*

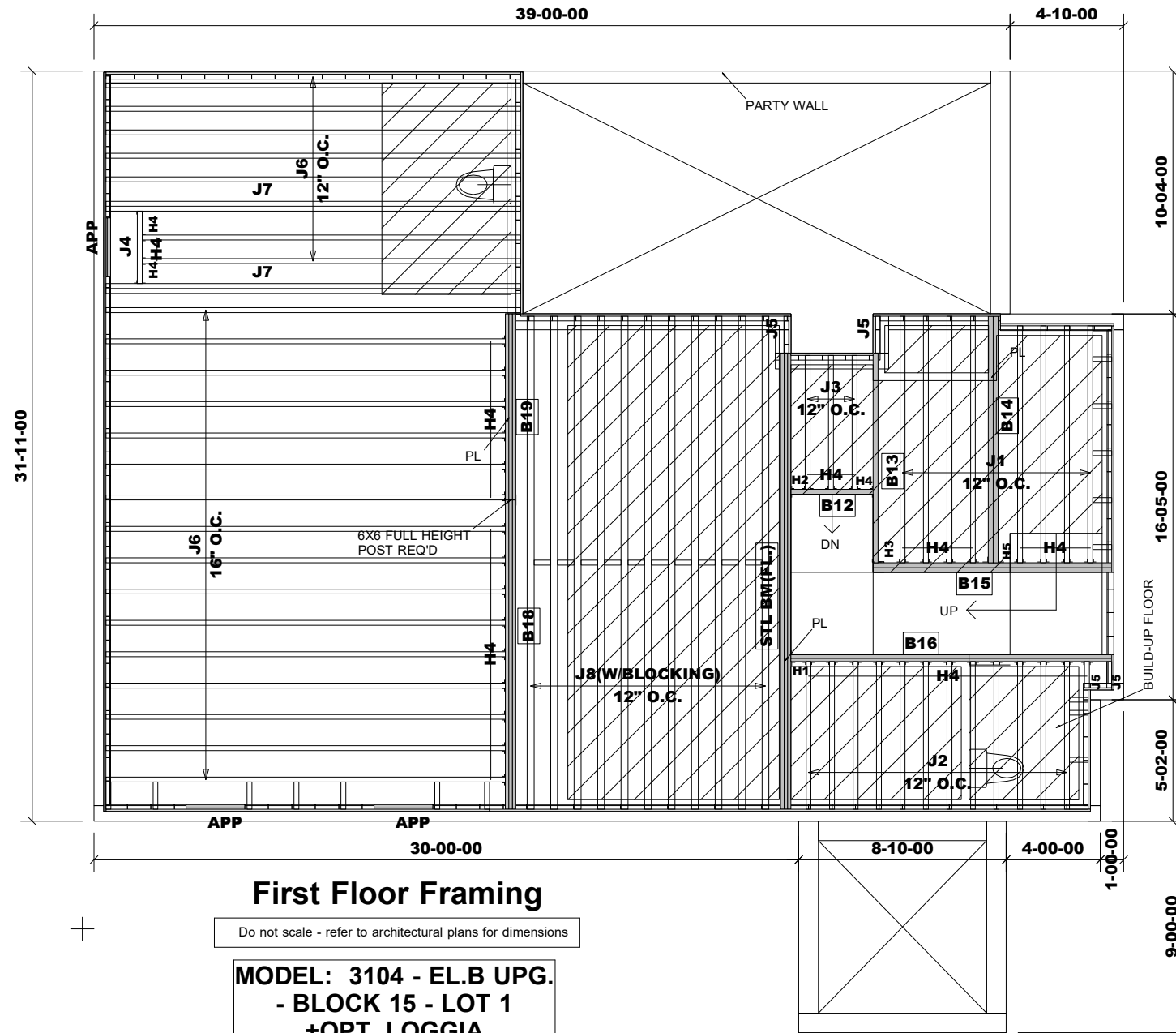
Builder: Gold Park  
Project: Pine Valley PH.2

Location: Vaughan  
Date: May 2, 2022

Designer: NL  
Sheet: 1 of 2

Alpa Roof Trusses Inc.  
Maple, Ontario

Salesperson: Derek  
Home Lumber



First Floor Framing

Do not scale - refer to architectural plans for dimensions

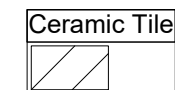
MODEL: 3104 - EL.B UPG.  
- BLOCK 15 - LOT 1  
+OPT. LOGGIA

Products				
PlotID	Length	Product	Plies	Net Qty
B12	4-00-00	11 7/8" NI-20	1	1
B13	9-00-00	11 7/8" NI-20	1	1
B14	11-00-00	11 7/8" NI-20	2	2
B15	11-00-00	11 7/8" NI-20	2	2
B16	14-00-00	1-3/4" x 11-7/8" VERSA-LAM® 2.0 3100 SP	2	2
B18	14-00-00	1-3/4" x 11-7/8" VERSA-LAM® 2.0 3100 SP	3	3
B19	8-00-00	1-3/4" x 11-7/8" VERSA-LAM® 2.0 3100 SP	3	3
Ca1	148-00-00	1 1/8" x 11 7/8" Rim Board	1	1
J1	11-00-00	11 7/8" NI-20	1	8
J2	7-00-00	11 7/8" NI-20	1	12
J3	6-00-00	11 7/8" NI-20	1	3
J4	4-00-00	11 7/8" NI-20	1	1
J5	2-00-00	11 7/8" NI-20	1	4
J6	18-00-00	11 7/8" NI-40x	1	24
J7	18-00-00	11 7/8" NI-40x	2	4
J8	21-00-00	11 7/8" NI-80	1	11

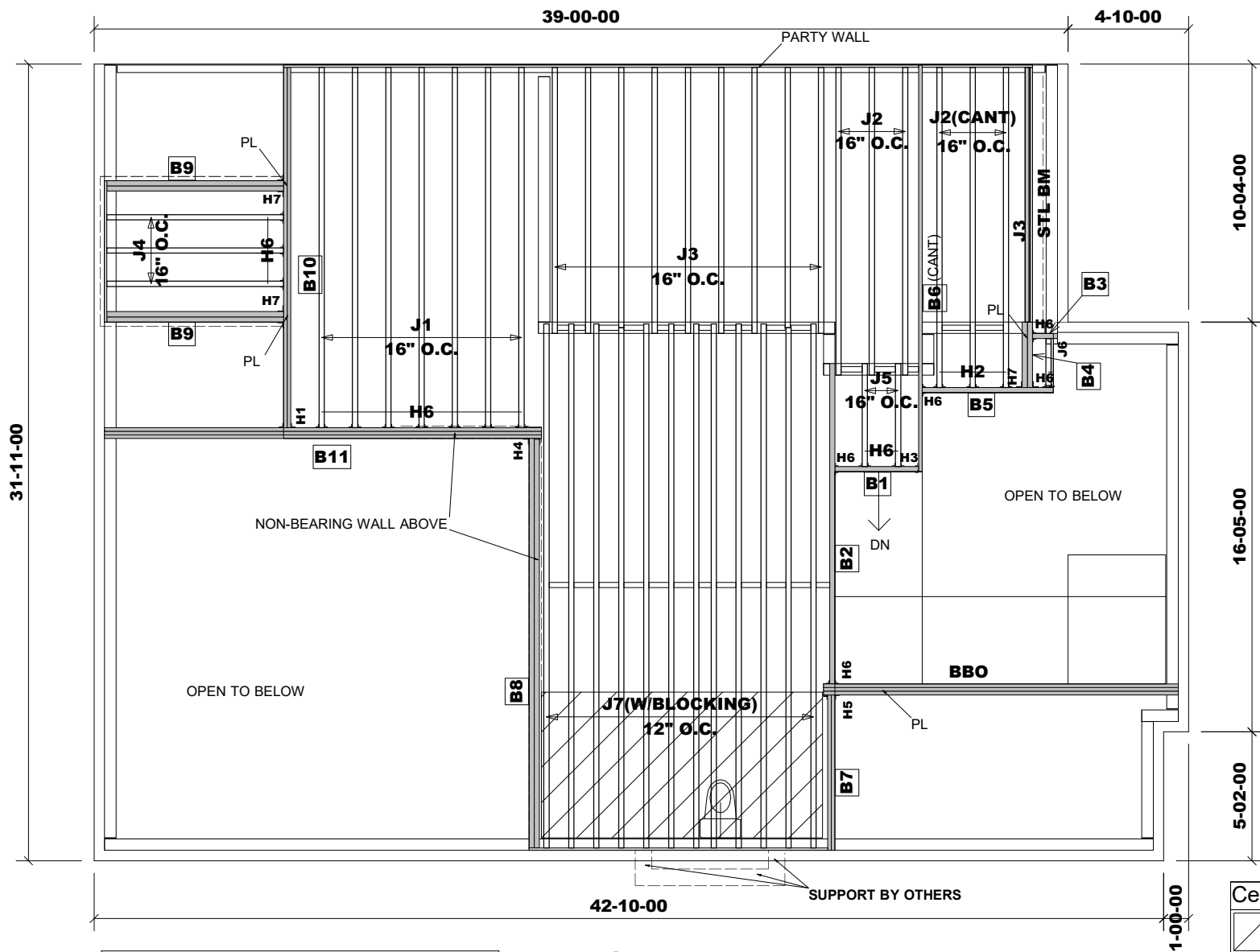
Connector Summary			
PlotID	Qty	Manuf	Product
H1	1		HGUS410
H2	1		HU310
H3	1		HUC310
H4	44		LT251188
H5	1		MIT311.88-2

DESIGN LOADING:  
  
LIVE LOAD = 40 PSF  
DEAD LOAD = 15 PSF  
DEAD LOAD @TILE = 20 PSF

RIMBOARD  
1- 1/8" X 11 7/8" O.S.B.  
SUBFLOOR - 3/4" NAILED & GLUED\*  
  
APP - AS PER PLAN  
BBO - BEAM BY OTHERS



Ceramic tile application as per O.B.C. 9.30.6  
  
Blocking panels are required over all interior supports  
Squash blocks are required under concentrated loads.



Products				
PlotID	Length	Product	Plies	Net Qty
B1	4'-0"-00	11 7/8" NI-20	1	1
B2	13'-0"-00	11 7/8" NI-20	1	1
B3	1'-0"-00	11 7/8" NI-20	1	1
B4	3'-0"-00	11 7/8" NI-20	2	2
B5	6'-0"-00	11 7/8" NI-20	1	1
B6	17'-0"-00	1-3/4" x 11-7/8" VERSA-LAM® 2.0 3100 SP	1	1
B7	7'-0"-00	1-3/4" x 11-7/8" VERSA-LAM® 2.0 3100 SP	2	2
B8	17'-0"-00	11 7/8" NI-20	2	2
B9	8'-0"-00	11 7/8" NI-20	2	4
B10	15'-0"-00	1-3/4" x 11-7/8" VERSA-LAM® 2.0 3100 SP	2	2
B11	18'-0"-00	1-3/4" x 11-7/8" VERSA-LAM® 2.0 3100 SP	3	3
Ca1	60'-0"-00	1 1/8" x 11 7/8" Rim Board	1	1
J1	15'-0"-00	11 7/8" NI-20	1	7
J2	13'-0"-00	11 7/8" NI-20	1	6
J3	11'-0"-00	11 7/8" NI-20	1	10
J4	8'-0"-00	11 7/8" NI-20	1	3
J5	5'-0"-00	11 7/8" NI-20	1	2
J6	2'-0"-00	11 7/8" NI-20	1	1
J7	21'-0"-00	11 7/8" NI-40x	1	12

Connector Summary			
PlotID	Qty	Manuf	Product
H1	1		HGUS410
H2	3		HU310
H3	1		HUC310
H4	1		HUC310-2
H5	1		HUC410
H6	18		LT251188
H7	3		MIT311.88-2

RIMBOARD  
1- 1/8" X 11 7/8" O.S.B.  
SUBFLOOR - 3/4" NAILED & GLUED\*  
APP - AS PER PLAN  
BBO - BEAM BY OTHERS

DESIGN LOADING:  
LIVE LOAD = 40 PSF  
DEAD LOAD = 15 PSF  
DEAD LOAD @TILE = 20 PSF

Ceramic tile application as per O.B.C. 9.30.6

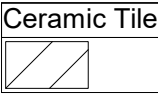
Provide I-Joist Blocking between cantilevered joists (along bearing).

Blocking panels are required over all interior supports  
Squash blocks are required under concentrated loads.

MODEL: 3104 - COR - EL.A  
+OPT. LOGGIA & METER RM

Second Floor Framing

Do not scale - refer to architectural plans for dimensions



JT/PL: 45147/111207  
LI: (333182)333183

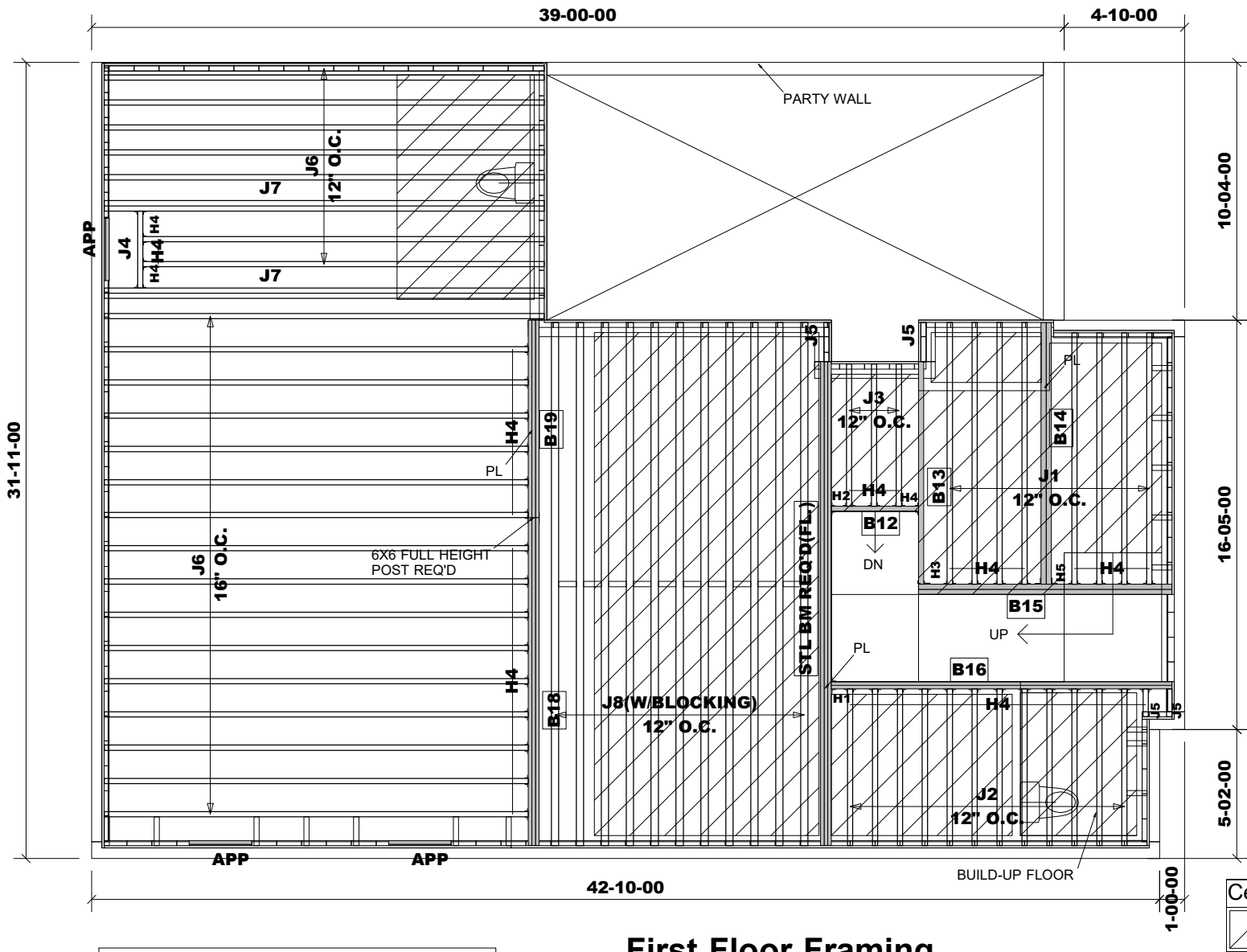
Builder: Gold Park  
Project: Pine Valley

Location: Vaughan  
Date: November 6, 2021

Designer: NL  
Sheet: 1 of 2

Alpa Roof Trusses Inc.  
Maple, Ontario

Salesperson: Derek  
Home Lumber



Products				
PlotID	Length	Product	Plies	Net Qty
B12	4-00-00	11 7/8" NI-20	1	1
B13	9-00-00	11 7/8" NI-20	1	1
B14	11-00-00	11 7/8" NI-20	2	2
B15	11-00-00	11 7/8" NI-20	2	2
B16	14-00-00	1-3/4" x 11-7/8" VERSA-LAM® 2.0 3100 SP	2	2
B18	14-00-00	1-3/4" x 11-7/8" VERSA-LAM® 2.0 3100 SP	3	3
B19	8-00-00	1-3/4" x 11-7/8" VERSA-LAM® 2.0 3100 SP	3	3
Ca1	148-00-00	1 1/8" x 11 7/8" Rim Board	1	1
J1	11-00-00	11 7/8" NI-20	1	8
J2	7-00-00	11 7/8" NI-20	1	12
J3	6-00-00	11 7/8" NI-20	1	3
J4	4-00-00	11 7/8" NI-20	1	1
J5	2-00-00	11 7/8" NI-20	1	4
J6	18-00-00	11 7/8" NI-40x	1	24
J7	18-00-00	11 7/8" NI-40x	2	4
J8	21-00-00	11 7/8" NI-80	1	11

Connector Summary			
PlotID	Qty	Manuf	Product
H1	1		HGUS410
H2	1		HU310
H3	1		HUC310
H4	44		LT251188
H5	1		MIT311.88-2

DESIGN LOADING:  
  
LIVE LOAD = 40 PSF  
DEAD LOAD = 15 PSF  
DEAD LOAD @TILE = 20 PSF

RIMBOARD  
  
1- 1/8" X 11 7/8" O.S.B.  
  
SUBFLOOR - 3/4" NAILED & GLUED\*  
  
APP - AS PER PLAN  
BBO - BEAM BY OTHERS

Ceramic tile application as per O.B.C. 9.30.6  
  
Blocking panels are required over all interior supports  
Squash blocks are required under concentrated loads.

MODEL: 3104 - COR - EL.A  
+OPT. LOGGIA & METER RM

First Floor Framing

Do not scale - refer to architectural plans for dimensions



Customer: **Gold Park**  
 Job Address: **Pine Valley**  
 City: **Vaughan**  
 Job Track: **45147(3104)**

Job Name: **333182-A**  
 Level: **2nd Floor - Supply/BOM**  
 Label: **B1 - i19765**  
 Type: **Beam**

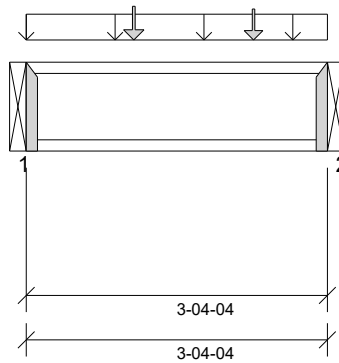
**1 Ply Member**  
**11 7/8" NI-20**

Status:  
**Design Passed**

Illustration Not to Scale. Pitch: 0/12

Designed by Single Member Design Engine in MiTek® Structure version  
 8.4.2.2861 Indate 9.13

Report Version: 2020.06.20 11/05/2021 16:37



### DESIGN INFORMATION

Building Code: NBCC 2015, Part9, BCBC 2018, ABC 2019, OBC 2012 (2019 Amendment)

Design Methodology: LSD

Service Condition: Dry

LL Deflection Limit: L/360,

TL Deflection Limit: L/240,

#### Lateral Restraint Requirements:

Both ends of the member and the outer supports must be laterally restrained. Top and bottom edges of the member must be fully restrained or have the following maximum unbraced length:

Top: 0' Bottom: 1'- 1 1/2"

#### Factored Resistance of Support Material:

- 769 psi Beam @ 0'
- 769 psi Beam @ 3'- 4 1/4"

### ANALYSIS RESULTS

Design Criteria	Location	Load Combination	LDF	Design	Limit	Result
Factored Pos. Moment:	1'- 6 5/16"	1.25D + 1.5L	1.00	569 lb ft	5580 lb ft	Passed - 10%
Factored Shear:	3'- 4 3/16"	1.25D + 1.5L	1.00	641 lb	2240 lb	Passed - 29%

### SUPPORT AND REACTION INFORMATION

ID	Input Bearing Length	Controlling Load Combination	LDF	Factored Downward Reaction	Factored Uplift Reaction	Factored Resistance of Member	Factored Resistance of Support	Result
1	1-12	1.25D + 1.5L	1.00	608 lb		1970 lb	-	Passed - 31%
2	1-12	1.25D + 1.5L	1.00	643 lb		1970 lb	-	Passed - 33%

### CONNECTOR INFORMATION

ID	Part No.	Manufacturer	Nailing Requirements			Other Information or Requirement for Reinforcement Accessories
			Top	Face	Member	
1	LT251188		-	-	-	Connector manually specified by the user.
2	HUC310		-	-	-	Connector manually specified by the user.

\* Connectors: Refer to manufacturer's specifications, fasteners requirements and installation instruction. Where header fasteners are longer than the width of the supporting member, install backer block or clinch header nails.

### SPECIFIED LOADS

Type	Start Loc	End Loc	Source	Face	Dead (D)	Live (L)	Snow (S)	Wind (W)
Self Weight	0'	3'- 4 1/4"	Self Weight	Top	3 lb/ft	-	-	-
Uniform	0'	3'- 4 1/4"	User Load	Top	45 lb/ft	120 lb/ft	-	-
Point	1'- 2 3/8"	1'- 2 3/8"	J5(i19776)	Back	57 lb	114 lb	-	-
Point	2'- 6 3/8"	2'- 6 3/8"	J5(i19855)	Back	48 lb	96 lb	-	-

### UNFACTORED REACTIONS

ID	Start Loc	End Loc	Source	Dead (D)	Live (L)	Snow (S)	Wind (W)
1	0'	0'	B2(i19901)	129 lb	298 lb	-	-
2	3'- 4 1/4"	3'- 4 1/4"	B6(i19836)	137 lb	314 lb	-	-

### DESIGN NOTES

- The dead loads used in the design of this member were applied to the structure as projected dead loads.
- Analysis and Design has been performed using precision loading from actual modeled conditions. Some loads may have been modified to simplify reporting.
- Tributary Loads have been generated based on actual spacing between members in the model which may differ from the default system spacing. The actual loads applied to the member are shown in the Specified Loads table.
- Transfer reactions may differ from design results as allowed per building codes and standard load distribution practices.
- This report is based on modeled conditions input by the user. Source information for the loads and supports are provided for reference only. Verify that all loads and support conditions are correct.
- Review all loads and reactions to ensure that the member/bearing/connector/structure can resist adequately. Unless already specified on this report, anchorage for uplift reactions to be specified by others. Installation of member and accessories (if required) as per manufacturer's instruction.
- When the applied loads are coming from a member/post/wall above that does not sit directly on this beam, adequate load transfer elements, such as squash blocks, wall studs, or beveled plates are required to transfer the loads to this beam.



SE-039875



Customer: **Gold Park**  
Job Address: **Pine Valley**  
City: **Vaughan**  
Job Track: **45147(3104)**

Job Name: **333182-A**  
Level: **2nd Floor - Supply/BOM**  
Label: **B2 - i19901**  
Type: **Beam**

**1 Ply Member**  
**11 7/8" NI-20**

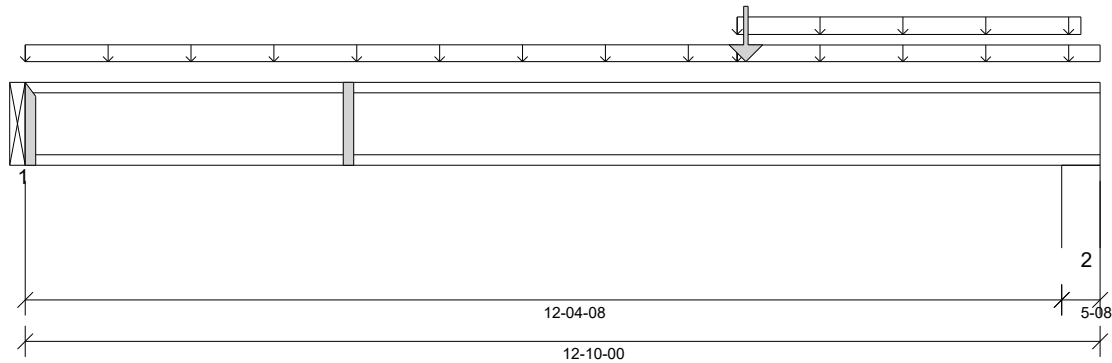
Status:  
**Design Passed**

Illustration Not to Scale. Pitch: 0/12

Designed by Single Member Design Engine in MiTek® Structure version  
8.4.2.2861 Undated 9.13

Report Version: 2020.06.20

11/05/2021 16:37



#### DESIGN INFORMATION

Building Code: NBCC 2015, Part9, BCBC 2018, ABC 2019, OBC 2012 (2019 Amendment)  
Design Methodology: LSD  
Service Condition: Dry  
LL Deflection Limit: L/360,  
TL Deflection Limit: L/240,

#### Lateral Restraint Requirements:

Both ends of the member and the outer supports must be laterally restrained. Top and bottom edges of the member must be fully restrained or have the following maximum unbraced length:

Top: 0' Bottom: 4'- 5 3/16"

#### Factored Resistance of Support Material:

- 769 psi Beam @ 0'
- 615 psi Wall @ 12'- 5 1/2"

#### ANALYSIS RESULTS

Design Criteria	Location	Load Combination	LDF	Design	Limit	Result
Factored Pos. Moment:	8'- 7 1/4"	1.25D + 1.5L	1.00	2553 lb ft	5580 lb ft	Passed - 46%
Factored Shear:	12'- 4 7/16"	1.25D + 1.5L	1.00	830 lb	2240 lb	Passed - 37%
Live Load (LL) Pos. Defl.:	6'- 8"	L		0.134"	L/360	Passed - L/999
Total Load (TL) Pos. Defl.:	6'- 7 3/4"	D + L		0.202"	L/240	Passed - L/734

#### SUPPORT AND REACTION INFORMATION

ID	Input Bearing Length	Controlling Load Combination	LDF	Factored Downward Reaction	Factored Uplift Reaction	Factored Resistance of Member	Factored Resistance of Support	Result
1	1-12	1.25D + 1.5L	1.00	476 lb		1970 lb	-	Passed - 24%
2	5-08	1.25D + 1.5L	1.00	862 lb		2240 lb	8459 lb	Passed - 38%

#### CONNECTOR INFORMATION

ID	Part No.	Manufacturer	Nailing Requirements			Other Information or Requirement for Reinforcement Accessories
			Top	Face	Member	
1	LT251188		-	-	-	Connector manually specified by the user.
* Connectors: Refer to manufacturer's specifications, fasteners requirements and installation instruction. Where header fasteners are longer than the width of the supporting member, install backer block or clinch header nails.						

#### SPECIFIED LOADS

Type	Start Loc	End Loc	Source	Face	Dead (D)	Live (L)	Snow (S)	Wind (W)
Self Weight	0'	12'- 10"	Self Weight	Top	3 lb/ft	-	-	-
Uniform	0'	8'- 6"	FC1 Floor Decking (Plan View Fill)	Top	8 lb/ft	17 lb/ft	-	-
Uniform	8'- 6"	12'- 10"	FC1 Floor Decking (Plan View Fill)	Top	8 lb/ft	15 lb/ft	-	-
Uniform	8'- 6"	12'- 7 1/4"	FC1 Floor Decking (Plan View Fill)	Top	13 lb/ft	26 lb/ft	-	-
Point	8'- 7 1/4"	8'- 7 1/4"	B1(i19765)	Front	129 lb	298 lb	-	-

#### UNFACTORED REACTIONS

ID	Start Loc	End Loc	Source	Dead (D)	Live (L)	Snow (S)	Wind (W)
1	0'	0'	BBO(i19279)	122 lb	220 lb	-	-
2	12'- 4 1/2"	12'- 10"	4(i19254)	205 lb	400 lb	-	-

#### DESIGN NOTES

- The dead loads used in the design of this member were applied to the structure as projected dead loads.
- Analysis and Design has been performed using precision loading from actual modeled conditions. Some loads may have been modified to simplify reporting.
- Tributary Loads have been generated based on actual spacing between members in the model which may differ from the default system spacing. The actual loads applied to the member are shown in the Specified Loads table.
- Transfer reactions may differ from design results as allowed per building codes and standard load distribution practices.
- This report is based on modeled conditions input by the user. Source information for the loads and supports are provided for reference only. Verify that all loads and support conditions are correct.
- Review all loads and reactions to ensure that the member/bearing/connector/structure can resist adequately. Unless already specified on this report, anchorage for uplift reactions to be specified by others. Installation of member and accessories (if required) as per manufacturer's instruction.
- When the applied loads are coming from a member/post/wall above that does not sit directly on this beam, adequate load transfer elements, such as squash blocks, wall studs, or beveled plates are required to transfer the loads to this beam.



SE-039876





Customer: **Gold Park**  
 Job Address: **Pine Valley**  
 City: **Vaughan**  
 Job Track: **45147(3104)**

Job Name: **333182-A**  
 Level: **2nd Floor - Supply/BOM**  
 Label: **B3 - i19874**  
 Type: **Beam**

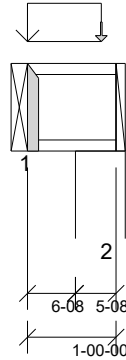
**1 Ply Member**  
**11 7/8" NI-20**

Status:  
**Design Passed**

Illustration Not to Scale. Pitch: 0/12

Designed by Single Member Design Engine in Mitek® Structure version  
 8.4.2.2861 Undated 9.13

Report Version: 2020.06.20 11/05/2021 16:37



### DESIGN INFORMATION

Building Code: NBCC 2015, Part9, BCBC 2018, ABC 2019, OBC 2012 (2019 Amendment)  
 Design Methodology: LSD  
 Service Condition: Dry  
 LL Deflection Limit: L/360,  
 TL Deflection Limit: L/240,

#### Lateral Restraint Requirements:

Both ends of the member and the outer supports must be laterally restrained. Top and bottom edges of the member must be fully restrained or have the following maximum unbraced length:

Top: 0'- 2" Bottom: 0'- 6 3/8"

#### Factored Resistance of Support Material:

- 769 psi Beam @ 0'
- 615 psi Wall @ 0'- 7 1/2"

### ANALYSIS RESULTS

Design Criteria	Location	Load Combination	LDF	Design	Limit	Result
Factored Pos. Moment:	0'- 3"	1.25D + 1.5S	0.95	17 lb ft	5312 lb ft	Passed - 0%
Factored Shear:	0'- 6 7/16"	1.25D + 1.5S	0.95	157 lb	2132 lb	Passed - 7%

### SUPPORT AND REACTION INFORMATION

ID	Input Bearing Length	Controlling Load Combination	LDF	Factored Downward Reaction	Factored Uplift Reaction	Factored Resistance of Member	Factored Resistance of Support	Result
1	1-12	1.25D + 1.5S	0.95	136 lb		1970 lb	-	Passed - 7%
2	5-08	1.25D + 1.5S	0.95	365 lb		2132 lb	8052 lb	Passed - 17%

### CONNECTOR INFORMATION

ID	Part No.	Manufacturer	Nailing Requirements			Other Information or Requirement for Reinforcement Accessories
			Top	Face	Member	
1	LT251188		-	-	-	Connector manually specified by the user.

\* Connectors: Refer to manufacturer's specifications, fasteners requirements and installation instruction. Where header fasteners are longer than the width of the supporting member, install backer block or clinch header nails.

### SPECIFIED LOADS

Type	Start Loc	End Loc	Source	Face	Dead (D)	Live (L)	Snow (S)	Wind (W)
Self Weight	0'	1'	Self Weight	Top	3 lb/ft	-	-	-
Uniform	-0'	0'- 10"	E11(i19236)	Top	220 lb/ft	-	179 lb/ft	-
Point	0'- 10"	0'- 10"	E11(i19236)	Top	18 lb	-	15 lb	-

### UNFACTORED REACTIONS

ID	Start Loc	End Loc	Source	Dead (D)	Live (L)	Snow (S)	Wind (W)
1	0'	0'	B4(i19830)	63 lb	-	51 lb	-
2	0'- 6 1/2"	1'	E3(i19211)	141 lb	-	113 lb	-

### DESIGN NOTES

- The dead loads used in the design of this member were applied to the structure as projected dead loads.
- Analysis and Design has been performed using precision loading from actual modeled conditions. Some loads may have been modified to simplify reporting.
- Tributary Loads have been generated based on actual spacing between members in the model which may differ from the default system spacing. The actual loads applied to the member are shown in the Specified Loads table.
- Transfer reactions may differ from design results as allowed per building codes and standard load distribution practices.
- This report is based on modeled conditions input by the user. Source information for the loads and supports are provided for reference only. Verify that all loads and support conditions are correct.
- Review all loads and reactions to ensure that the member/bearing/connector/structure can resist adequately. Unless already specified on this report, anchorage for uplift reactions to be specified by others. Installation of member and accessories (if required) as per manufacturer's instruction.
- When the applied loads are coming from a member/post/wall above that does not sit directly on this beam, adequate load transfer elements, such as squash blocks, wall studs, or beveled plates are required to transfer the loads to this beam.



SE-039877



Customer: **Gold Park**  
 Job Address: **Pine Valley**  
 City: **Vaughan**  
 Job Track: **45147(3104)**

Job Name: **333182-A**  
 Level: **2nd Floor - Supply/BOM**  
 Label: **B4 - i19830**  
 Type: **Beam**

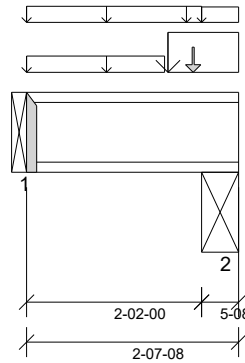
**2 Ply Member**  
**11 7/8" NI-20**

Status:  
**Design Passed**

Illustration Not to Scale. Pitch: 0/12

Designed by Single Member Design Engine in Mitek® Structure version  
 8.4.2.2861 Undated 9.13

Report Version: 2020.06.20 11/05/2021 16:37



### DESIGN INFORMATION

Building Code: NBCC 2015, Part9, BCBC 2018, ABC 2019, OBC 2012 (2019 Amendment)  
 Design Methodology: LSD  
 Service Condition: Dry  
 LL Deflection Limit: L/360,  
 TL Deflection Limit: L/240,

#### Lateral Restraint Requirements:

Both ends of the member and the outer supports must be laterally restrained. Top and bottom edges of the member must be fully restrained or have the following maximum unbraced length:

Top: 0' Bottom: 1'- 11 1/2"

#### Factored Resistance of Support Material:

- 769 psi Beam @ 0'
- 615 psi Beam @ 2'- 3"

### ANALYSIS RESULTS

Design Criteria	Location	Load Combination	LDF	Design	Limit	Result
Factored Pos. Moment:	1'- 2 9/16"	1.25D + 1.5L	0.65	114 lb ft	7254 lb ft	Passed - 2%
Factored Neg. Moment:	2'- 3"	1.25D + 1.5S	0.97	124 lb ft	10871 lb ft	Passed - 1%
Factored Shear:	2'- 1 15/16"	1.25D + 1.5S + L	0.99	873 lb	4434 lb	Passed - 20%

### SUPPORT AND REACTION INFORMATION

ID	Input Bearing Length	Controlling Load Combination	LDF	Factored Downward Reaction	Factored Uplift Reaction	Factored Resistance of Member	Factored Resistance of Support	Result
1	1'-12	1.25D + 1.5L	0.65	202 lb		3940 lb	-	Passed - 5%
2	5'-08	1.25D + 1.5S + L	0.99	1656 lb		4434 lb	16743 lb	Passed - 37%

### CONNECTOR INFORMATION

ID	Part No.	Manufacturer	Nailing Requirements			Other Information or Requirement for Reinforcement Accessories
			Top	Face	Member	
1	MIT311.88-2		-	-	-	Connector manually specified by the user.
* Connectors: Refer to manufacturer's specifications, fasteners requirements and installation instruction. Where header fasteners are longer than the width of the supporting member, install backer block or clinch header nails.						

### SPECIFIED LOADS

Type	Start Loc	End Loc	Source	Face	Dead (D)	Live (L)	Snow (S)	Wind (W)
Self Weight	0'	2'- 7 1/2"	Self Weight	Top	6 lb/ft	-	-	-
Uniform	0'	2'- 2"	FC1 Floor Decking (Plan View Fill)	Top	17 lb/ft	34 lb/ft	-	-
Uniform	0'	1'- 8 1/2"	User Load	Top	60 lb/ft	-	-	-
Uniform	1'- 9"	2'- 7 1/2"	E10(i19239)	Top	516 lb/ft	-	623 lb/ft	-
Uniform	2'- 2"	2'- 7 1/2"	FC1 Floor Decking (Plan View Fill)	Top	-	21 lb/ft	-	-
Point	2'- 3/4"	2'- 3/4"	B3(i19874)	Front	63 lb	-	51 lb	-

### UNFACTORED REACTIONS

ID	Start Loc	End Loc	Source	Dead (D)	Live (L)	Snow (S)	Wind (W)
1	0'	0'	B5(i19777)	102 lb	45 lb	13 lb	-
2	2'- 2"	2'- 7 1/2"	-	584 lb	46 lb	596 lb	-
++>	2'- 5 9/16"	2'- 5 9/16"	STL BM(i19262)	409 lb	32 lb	417 lb	-
++>	2'- 6 11/16"	2'- 6 11/16"	6(i19257)	175 lb	14 lb	179 lb	-

### DESIGN NOTES

- The dead loads used in the design of this member were applied to the structure as projected dead loads.
- Analysis and Design has been performed using precision loading from actual modeled conditions. Some loads may have been modified to simplify reporting.
- Tributary Loads have been generated based on actual spacing between members in the model which may differ from the default system spacing. The actual loads applied to the member are shown in the Specified Loads table.
- Transfer reactions may differ from design results as allowed per building codes and standard load distribution practices.
- This report is based on modeled conditions input by the user. Source information for the loads and supports are provided for reference only. Verify that all loads and support conditions are correct.
- Review all loads and reactions to ensure that the member/bearing/connector/structure can resist adequately. Unless already specified on this report, anchorage for uplift reactions to be specified by others. Installation of member and accessories (if required) as per manufacturer's instruction.
- When the applied loads are coming from a member/post/wall above that does not sit directly on this beam, adequate load transfer elements, such as squash blocks, wall studs, or beveled plates are required to transfer the loads to this beam.

### PLY TO PLY CONNECTION

Member design assumed proper ply to ply connection by others. Fastener spacing along length of member must not exceed 4 times depth of member. Verify connection between plies according to code specification and follow the manufacturer's installation instruction. Loads assumed to be distributed equally to each ply.



SE-039878



Customer: **Gold Park**  
Job Address: **Pine Valley**  
City: **Vaughan**  
Job Track: **45147(3104)**

Job Name: **333182-A**  
Level: **2nd Floor - Supply/BOM**  
Label: **B5 - i19777**  
Type: **Beam**

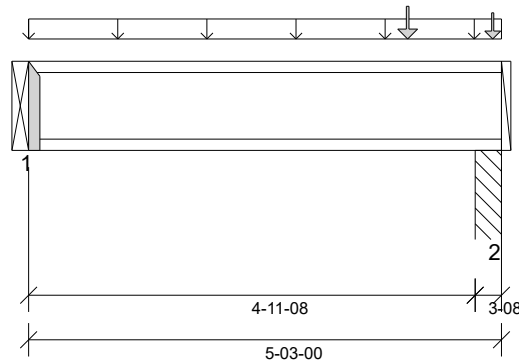
**1 Ply Member**  
**11 7/8" NI-20**

Status:  
**Design Passed**

Illustration Not to Scale. Pitch: 0/12

Designed by Single Member Design Engine in MiTek® Structure version  
8.4.2.2861 Undated 9.13

Report Version: 2020.06.20 11/05/2021 16:37



#### DESIGN INFORMATION

Building Code: NBCC 2015, Part9, BCBC 2018, ABC 2019, OBC 2012 (2019 Amendment)

Design Methodology: LSD

Service Condition: Dry

LL Deflection Limit: L/360,

TL Deflection Limit: L/240,

#### Lateral Restraint Requirements:

Both ends of the member and the outer supports must be laterally restrained. Top and bottom edges of the member must be fully restrained or have the following maximum unbraced length:

Top: 0' Bottom: 1'- 1 1/2"

#### Factored Resistance of Support Material:

- 769 psi Beam @ 0'
- 1334 psi Column @ 5'- 1/2"

#### ANALYSIS RESULTS

Design Criteria	Location	Load Combination	LDF	Design	Limit	Result
Factored Pos. Moment:	2'- 11 1/16"	1.25D + 1.5L + S	0.65	335 lb ft	3627 lb ft	Passed - 9%
Factored Shear:	4'- 11 7/16"	1.25D + 1.5L + S	0.65	368 lb	1456 lb	Passed - 25%

#### SUPPORT AND REACTION INFORMATION

ID	Input Bearing Length	Controlling Load Combination	LDF	Factored Downward Reaction	Factored Uplift Reaction	Factored Resistance of Member	Factored Resistance of Support	Result
1	1-12	1.4D	0.65	242 lb		1970 lb	-	Passed - 12%
2	3-08	1.25D + 1.5L + S	0.65	517 lb		1417 lb	7589 lb	Passed - 36%

#### CONNECTOR INFORMATION

ID	Part No.	Manufacturer	Nailing Requirements			Other Information or Requirement for Reinforcement Accessories
			Top	Face	Member	
1	LT251188		-	-	-	Connector manually specified by the user.

\* Connectors: Refer to manufacturer's specifications, fasteners requirements and installation instruction. Where header fasteners are longer than the width of the supporting member, install backer block or clinch header nails.

#### SPECIFIED LOADS

Type	Start Loc	End Loc	Source	Face	Dead (D)	Live (L)	Snow (S)	Wind (W)
Self Weight	0'	5'- 3"	Self Weight	Top	3 lb/ft	-	-	-
Uniform	0'	5'- 3"	User Load	Top	60 lb/ft	-	-	-
Point	4'- 2 1/2"	4'- 2 1/2"	B4(i19830)	Back	102 lb	45 lb	13 lb	-
Point	5'- 1 13/16"	5'- 1 13/16"	-	Back	66 lb	29 lb	-	-

#### UNFACTORED REACTIONS

ID	Start Loc	End Loc	Source	Dead (D)	Live (L)	Snow (S)	Wind (W)
1	0'	0'	B6(i19836)	175 lb	7 lb	2 lb	-
2	4'- 11 1/2"	5'- 3"	Pt1(i20115)	323 lb	67 lb	11 lb	-

#### DESIGN NOTES

- The dead loads used in the design of this member were applied to the structure as projected dead loads.
- Analysis and Design has been performed using precision loading from actual modeled conditions. Some loads may have been modified to simplify reporting.
- Tributary Loads have been generated based on actual spacing between members in the model which may differ from the default system spacing. The actual loads applied to the member are shown in the Specified Loads table.
- Transfer reactions may differ from design results as allowed per building codes and standard load distribution practices.
- This report is based on modeled conditions input by the user. Source information for the loads and supports are provided for reference only. Verify that all loads and support conditions are correct.
- Review all loads and reactions to ensure that the member/bearing/connector/structure can resist adequately. Unless already specified on this report, anchorage for uplift reactions to be specified by others. Installation of member and accessories (if required) as per manufacturer's instruction.
- When the applied loads are coming from a member/post/wall above that does not sit directly on this beam, adequate load transfer elements, such as squash blocks, wall studs, or beveled plates are required to transfer the loads to this beam.



SE-039879

# Single 1-3/4" x 11-7/8" VERSA-LAM® 2.0 3100 SP

## 2nd Floor - Supply/BOM\Flush Beams\B6(i20581) (Flush Beam)

**PASSED**

BC CALC® Member Report

Dry | 2 spans | L cant.

November 6, 2021 08:56:36

Build 7773

Job name: 45147(3104)

File name: 333182-A.mmdl

Address: Pine Valley

Description: 2nd Floor - Supply/BOM\Flush Beams\B6(i20581)

City, Province, Postal Code: Vaughan, ON

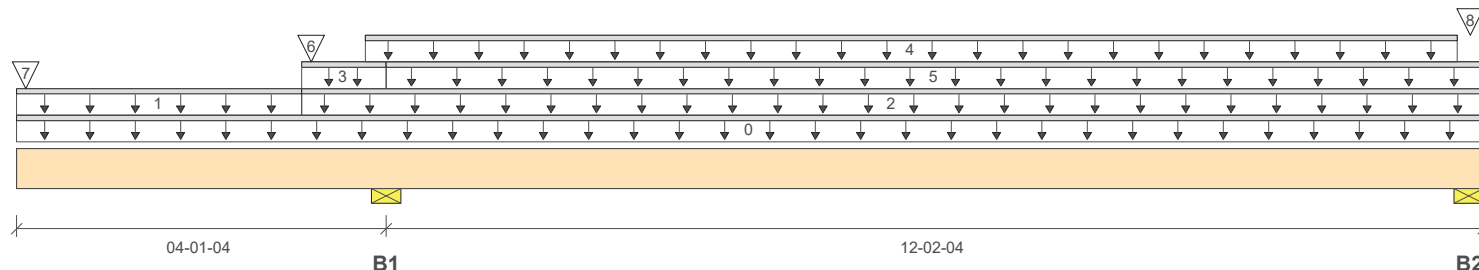
Specifier:

Customer: Gold Park

Designer: NL

Code reports: CCMC 12472-R

Company: Alpa Roof Trusses



Total Horizontal Product Length = 16-03-08

### Reaction Summary (Down / Uplift) (lbs)

Bearing	Live	Dead	Snow	Wind
B1, 5-1/2"	845 / 0	641 / 0	2 / 0	
B2, 3-1/2"	289 / 126	125 / 0	0 / 0	

### Load Summary

Tag	Description	Load Type	Ref.	Start	End	Loc.	Live 1.00	Dead 0.65	Snow 1.00	Wind 1.15	Tributary
0	Self-Weight	Unf. Lin. (lb/ft)	L	00-00-00	16-03-08	Top		6			00-00-00
1	FC1 Floor Decking (Plan View Fill)	Unf. Lin. (lb/ft)	L	00-00-00	03-02-00	Top	19	10			n/a
2	FC1 Floor Decking (Plan View Fill)	Unf. Lin. (lb/ft)	L	03-02-00	16-03-08	Top	15	8			n/a
3	FC1 Floor Decking (Plan View Fill)	Unf. Lin. (lb/ft)	L	03-02-00	04-01-04	Top	18	9			n/a
4	User Load	Unf. Lin. (lb/ft)	L	03-10-08	16-00-00	Top	20	10			n/a
5	FC1 Floor Decking (Plan View Fill)	Unf. Lin. (lb/ft)	L	04-01-04	16-03-08	Top	12	6			n/a
6	B5(i20576)	Conc. Pt. (lbs)	L	03-03-04	03-03-04	Top		175	2		n/a
7	-	Conc. Pt. (lbs)	L	00-01-03	00-01-03	Top	331	137			n/a
8	E24(i19251)	Conc. Pt. (lbs)	L	16-01-12	16-01-12	Top		15			n/a

### Controls Summary

	Factored Demand	Factored Resistance	Demand/Resistance	Case	Location
Pos. Moment	1440 ft-lbs	17696 ft-lbs	8.1%	33	10-11-01
Neg. Moment	-3327 ft-lbs	-4265 ft-lbs	78.0%	1	04-01-04
End Shear	445 lbs	7232 lbs	6.2%	3	15-00-02
Cont. Shear	1020 lbs	7232 lbs	14.1%	1	02-10-10
Total Load Deflection	2xL/663 (0.148")	n/a	36.2%	82	00-00-00
Live Load Deflection	2xL/1998 (0.116")	n/a	n/a	120	00-00-00
Total Neg. Defl.	L/999 (-0.05")	n/a	n/a	82	08-07-13
Max Defl.	-0.05"	n/a	n/a	82	08-07-13
Span / Depth	12.1				



### Bearing Supports

	Dim. (LxW)	Demand	Demand/Resistance Support	Demand/Resistance Member	Material
B1	Wall/Plate 5-1/2" x 1-3/4"	2072 lbs	35.0%	17.6%	Spruce-Pine-Fir
B2	Wall/Plate 3-1/2" x 1-3/4"	590 lbs	15.7%	7.9%	Spruce-Pine-Fir
B2	Uplift	76 lbs			

# Single 1-3/4" x 11-7/8" VERSA-LAM® 2.0 3100 SP

## 2nd Floor - Supply/BOM\Flush Beams\B6(i20581) (Flush Beam)

**PASSED**

BC CALC® Member Report

Dry | 2 spans | L cant.

November 6, 2021 08:56:36

Build 7773

Job name: 45147(3104)

File name: 333182-A.mmdl

Address: Pine Valley

Description: 2nd Floor - Supply/BOM\Flush Beams\B6(i20581)

City, Province, Postal Code: Vaughan, ON

Specifier:

Customer: Gold Park

Designer: NL

Code reports: CCMC 12472-R

Company: Alpa Roof Trusses

### Notes

Design meets User specified (2xL/240) Total load deflection criteria.

Design meets User specified (2xL/360) Live load deflection criteria.

Resistance Factor phi has been applied to all presented results per CSA O86.

BC CALC® analysis is based on Canadian Limit States Design, as per NBCC 2015 and CSA O86.

Unbalanced snow loads determined from building geometry were used in selected product's verification.

Design based on Dry Service Condition.

Importance Factor : Normal Part code : Part 9

Cantilevers require sheathed bottom flanges, blocking at cantilever support and closure at ends.

Calculations assume unbraced length of Top: 00-00-00, Bottom: 11-08-00.



### Disclosure

Use of the Boise Cascade Software is subject to the terms of the End User License Agreement (EULA). Completeness and accuracy of input must be reviewed and verified by a qualified engineer or other appropriate expert to assure its adequacy, prior to anyone relying on such output as evidence of suitability for a particular application. The output here is based on building code-accepted design properties and analysis methods. Installation of Boise Cascade engineered wood products must be in accordance with current Installation Guide and applicable building codes. To obtain Installation Guide or ask questions, please call (800)232-0788 before installation.

SE039880(2)

BC CALC®, BC FRAMER®, AJS™, ALLJOIST®, BC RIM BOARD™, BCI®, BOISE GLULAM™, BC FloorValue®, VERSA-LAM®, VERSA-RIM PLUS®,

BC CALC® Member Report

Dry | 1 span | No cant.

November 6, 2021 08:56:36

Build 7773

Job name: 45147(3104)

File name: 333182-A.mmdl

Address: Pine Valley

Description: 2nd Floor - Supply/BOM\Flush Beams\B7(i20526)

City, Province, Postal Code: Vaughan, ON

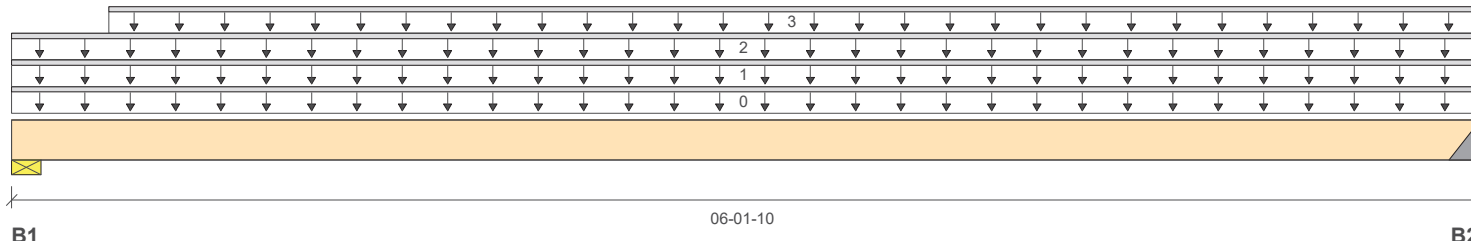
Specifier:

Customer: Gold Park

Designer: NL

Code reports: CCMC 12472-R

Company: Alpa Roof Trusses



### Reaction Summary (Down / Uplift) (lbs)

Bearing	Live	Dead	Snow	Wind
B1, 4-3/8"	54 / 0	582 / 0	523 / 0	
B2, 2"	51 / 0	573 / 0	497 / 0	

### Load Summary

Tag	Description	Load Type	Ref.	Start	End	Loc.	Live 1.00	Dead 0.65	Snow 1.00	Wind 1.15	Tributary
0	Self-Weight	Unf. Lin. (lb/ft)	L	00-00-00	06-01-10	Top		12			00-00-00
1	User Load	Unf. Lin. (lb/ft)	L	00-00-00	06-01-10	Top		98	147		n/a
2	FC1 Floor Decking (Plan View Fill)	Unf. Lin. (lb/ft)	L	00-00-00	06-01-10	Top	17	9			n/a
3	E14(i19250)	Unf. Lin. (lb/ft)	L	00-04-14	06-01-10	Top		75	21		n/a

### Controls Summary

	Factored Demand	Factored Resistance	Demand/Resistance	Case	Location
Pos. Moment	2095 ft-lbs	35392 ft-lbs	5.9%	13	03-02-00
End Shear	1044 lbs	14464 lbs	7.2%	13	01-04-04
Total Load Deflection	L/999 (0.009")	n/a	n/a	35	03-02-00
Live Load Deflection	L/999 (0.005")	n/a	n/a	51	03-02-00
Max Defl.	0.009"	n/a	n/a	35	03-02-00
Span / Depth	5.8				

### Bearing Supports

	Dim. (LxW)	Demand	Demand/Resistance Support	Demand/Resistance Member	Material
B1	Wall/Plate 4-3/8" x 3-1/2"	1566 lbs	16.6%	8.4%	Spruce-Pine-Fir
B2	Hanger 2" x 3-1/2"	1513 lbs	n/a	17.7%	HUC410

### Notes

Design meets Code minimum (L/240) Total load deflection criteria.  
 Design meets Code minimum (L/360) Live load deflection criteria.  
 Hanger Manufacturer: Unassigned  
 Resistance Factor phi has been applied to all presented results per CSA O86.  
 BC CALC® analysis is based on Canadian Limit States Design, as per NBCC 2015 and CSA O86.  
 Unbalanced snow loads determined from building geometry were used in selected product's verification.  
 Design based on Dry Service Condition.  
 Importance Factor : Normal Part code : Part 9  
 Calculations assume unbraced length of Top: 00-00-00, Bottom: 05-09-04.



NAIL ONE PLY TO ANOTHER WITH 3 1/2" SPIRAL NAILS  
 @ 6" O.C., STAGGERED IN TWO ROWS

SE-039881





Customer: **Gold Park**  
Job Address: **Pine Valley**  
City: **Vaughan**  
Job Track: **45147(3104)**

Job Name: **333182-A**  
Level: **2nd Floor - Supply/BOM**  
Label: **B8 - i20706**  
Type: **Beam**

**2 Ply Member**  
**11 7/8" NI-20**

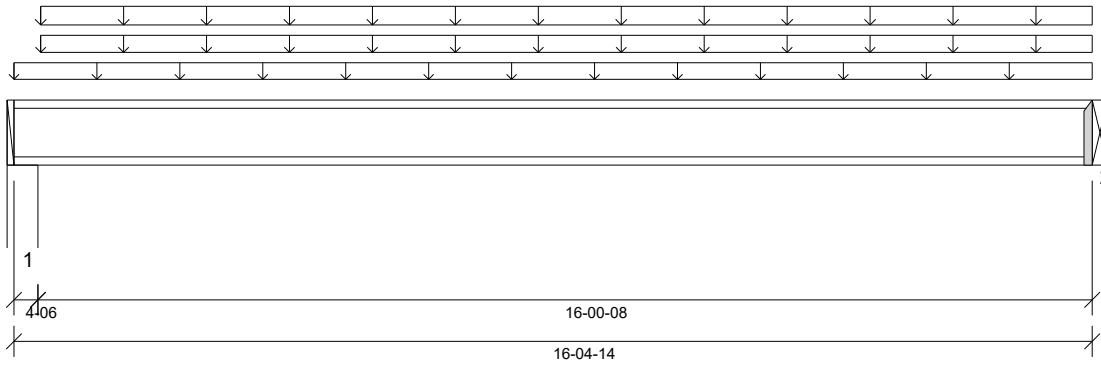
Status:  
**Design Passed**

Illustration Not to Scale. Pitch: 0/12

Designed by Single Member Design Engine in Mitek® Structure version  
8.4.2.2861 dated 9.13

Report Version: 2020.06.20

11/06/2021 08:57



#### DESIGN INFORMATION

Building Code: NBCC 2015, Part9, BCBC 2018, ABC 2019, OBC 2012 (2019 Amendment)  
Design Methodology: LSD  
Service Condition: Dry  
LL Deflection Limit: L/360,  
TL Deflection Limit: L/240,

#### Lateral Restraint Requirements:

Both ends of the member and the outer supports must be laterally restrained. Top and bottom edges of the member must be fully restrained or have the following maximum unbraced length:

Top: 0' Bottom: 16'- 1/2"

#### Factored Resistance of Support Material:

- 615 psi Wall @ 0'- 3 3/8"
- 769 psi Beam @ 16'- 4 7/8"

#### ANALYSIS RESULTS

Design Criteria	Location	Load Combination	LDF	Design	Limit	Result
Factored Pos. Moment:	8'- 4 1/8"	1.25D + 1.5L	0.81	5041 lb ft	9004 lb ft	Passed - 56%
Factored Shear:	16'- 4 13/16"	1.25D + 1.5L	0.81	1250 lb	3614 lb	Passed - 35%
Live Load (LL) Pos. Defl.:	8'- 4 1/8"	L		0.111"	L/360	Passed - L/999
Total Load (TL) Pos. Defl.:	8'- 4 1/8"	D + L		0.382"	L/240	Passed - L/503
Permanent Deflection:	8'- 4 1/8"			-	L/360	Passed - L/768

#### SUPPORT AND REACTION INFORMATION

ID	Input Bearing Length	Controlling Load Combination	LDF	Factored Downward Reaction	Factored Uplift Reaction	Factored Resistance of Member	Factored Resistance of Support	Result
1	4-06	1.25D + 1.5L	0.81	1249 lb		3614 lb	10857 lb	Passed - 35%
2	1-12	1.25D + 1.5L	0.81	1251 lb		3940 lb	-	Passed - 32%

#### CONNECTOR INFORMATION

ID	Part No.	Manufacturer	Nailing Requirements			Other Information or Requirement for Reinforcement Accessories
			Top	Face	Member	
2	HUC310-2		-	-	-	Connector manually specified by the user.

\* Connectors: Refer to manufacturer's specifications, fasteners requirements and installation instruction. Where header fasteners are longer than the width of the supporting member, install backer block or clinch header nails.

#### SPECIFIED LOADS

Type	Start Loc	End Loc	Source	Face	Dead (D)	Live (L)	Snow (S)	Wind (W)
Self Weight	0'	16'- 4 7/8"	Self Weight	Top	6 lb/ft	-	-	-
Uniform	0'	16'- 4 7/8"	FC1 Floor Decking (Plan View Fill)	Top	7 lb/ft	14 lb/ft	-	-
Uniform	0'- 4 7/8"	16'- 4 7/8"	E16(i19246)	Top	61 lb/ft	-	-	-
Uniform	0'- 4 7/8"	16'- 4 7/8"	User Load	Top	10 lb/ft	20 lb/ft	-	-

#### UNFACTORED REACTIONS

ID	Start Loc	End Loc	Source	Dead (D)	Live (L)	Snow (S)	Wind (W)
1	0'	0'- 4 3/8"	E8(i19213)	672 lb	278 lb	-	-
2	16'- 4 7/8"	16'- 4 7/8"	B11(i20661)	668 lb	272 lb	-	-

#### DESIGN NOTES

- The dead loads used in the design of this member were applied to the structure as projected dead loads.
- Analysis and Design has been performed using precision loading from actual modeled conditions. Some loads may have been modified to simplify reporting.
- Tributary Loads have been generated based on actual spacing between members in the model which may differ from the default system spacing. The actual loads applied to the member are shown in the Specified Loads table.
- Transfer reactions may differ from design results as allowed per building codes and standard load distribution practices.
- This report is based on modeled conditions input by the user. Source information for the loads and supports are provided for reference only. Verify that all loads and support conditions are correct.
- Review all loads and reactions to ensure that the member/bearing/connector/structure can resist adequately. Unless already specified on this report, anchorage for uplift reactions to be specified by others. Installation of member and accessories (if required) as per manufacturer's instruction.
- When the applied loads are coming from a member/post/wall above that does not sit directly on this beam, adequate load transfer elements, such as squash blocks, wall studs, or beveled plates are required to transfer the loads to this beam.

#### PLY TO PLY CONNECTION

Member design assumed proper ply to ply connection by others. Fastener spacing along length of member must not exceed 4 times depth of member. Verify connection between plies according to code specification and follow the manufacturer's installation instruction. Loads assumed to be distributed equally to each ply.



SE-039882



Customer: **Gold Park**  
 Job Address: **Pine Valley**  
 City: **Vaughan**  
 Job Track: **45147(3104)**

Job Name: **333182-A**  
 Level: **2nd Floor - Supply/BOM**  
 Label: **B9 - i20580**  
 Type: **Beam**

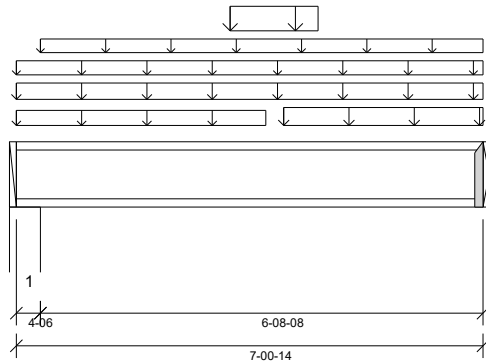
**2 Ply Member**  
**11 7/8" NI-20**

Status:  
**Design Passed**

Illustration Not to Scale. Pitch: 0/12

Designed by Single Member Design Engine in Mitek® Structure version  
 8.4.2.2861 Undated 9.13

Report Version: 2020.06.20 11/06/2021 08:57



#### DESIGN INFORMATION

Building Code: NBCC 2015, Part9, BCBC 2018, ABC 2019, OBC 2012 (2019 Amendment)  
 Design Methodology: LSD  
 Service Condition: Dry  
 LL Deflection Limit: L/360,  
 TL Deflection Limit: L/240,

#### Lateral Restraint Requirements:

Both ends of the member and the outer supports must be laterally restrained. Top and bottom edges of the member must be fully restrained or have the following maximum unbraced length:

Top: 0' Bottom: 6'- 8 1/2"

#### Factored Resistance of Support Material:

- 615 psi Wall @ 0'- 3 3/8"
- 769 psi Beam @ 7'- 7/8"

#### ANALYSIS RESULTS

Design Criteria	Location	Load Combination	LDF	Design	Limit	Result
Factored Pos. Moment:	3'- 10 3/8"	1.25D + 1.5S + L	0.91	2943 lb ft	10108 lb ft	Passed - 29%
Factored Shear:	7'- 13/16"	1.25D + 1.5S + L	0.91	1634 lb	4058 lb	Passed - 40%
Live Load (LL) Pos. Defl.:	3'- 8 7/8"	S + 0.5L		0.021"	L/360	Passed - L/999
Total Load (TL) Pos. Defl.:	3'- 8 5/8"	D + S + 0.5L		0.051"	L/240	Passed - L/999

#### SUPPORT AND REACTION INFORMATION

ID	Input Bearing Length	Controlling Load Combination	LDF	Factored Downward Reaction	Factored Uplift Reaction	Factored Resistance of Member	Factored Resistance of Support	Result
1	4-06	1.25D + 1.5L + S	0.82	1398 lb		3685 lb	11070 lb	Passed - 38%
2	1-12	1.25D + 1.5S + L	0.91	1636 lb		3940 lb	-	Passed - 42%

#### CONNECTOR INFORMATION

ID	Part No.	Manufacturer	Nailing Requirements			Other Information or Requirement for Reinforcement Accessories
			Top	Face	Member	
2	MIT311.88-2		-	-	-	Connector manually specified by the user.
* Connectors: Refer to manufacturer's specifications, fasteners requirements and installation instruction. Where header fasteners are longer than the width of the supporting member, install backer block or clinch header nails.						

#### SPECIFIED LOADS

Type	Start Loc	End Loc	Source	Face	Dead (D)	Live (L)	Snow (S)	Wind (W)
Self Weight	0'	7'- 7/8"	Self Weight	Top	6 lb/ft	-	-	-
Uniform	-0'	7'- 7/8"	E19(i19242)	Top	101 lb/ft	-	-	-
Uniform	0'	7'- 7/8"	FC1 Floor Decking (Plan View Fill)	Top	15 lb/ft	31 lb/ft	-	-
Uniform	-0'	3'- 9 3/8"	E19(i19242)	Top	28 lb/ft	-	42 lb/ft	-
Uniform	0'- 4 3/8"	7'- 7/8"	User Load	Top	14 lb/ft	-	21 lb/ft	-
Uniform	3'- 2 7/8"	4'- 6 7/8"	E19(i19242)	Top	121 lb/ft	-	181 lb/ft	-
Uniform	4'- 5/8"	7'- 7/8"	E19(i19242)	Top	56 lb/ft	-	84 lb/ft	-

#### UNFACTORED REACTIONS

ID	Start Loc	End Loc	Source	Dead (D)	Live (L)	Snow (S)	Wind (W)
1	0'	0'- 4 3/8"	E1(i19216)	691 lb	116 lb	359 lb	-
2	7'- 7/8"	7'- 7/8"	B10(i20652)	704 lb	104 lb	435 lb	-

#### DESIGN NOTES

- The dead loads used in the design of this member were applied to the structure as projected dead loads.
- Analysis and Design has been performed using precision loading from actual modeled conditions. Some loads may have been modified to simplify reporting.
- Tributary Loads have been generated based on actual spacing between members in the model which may differ from the default system spacing. The actual loads applied to the member are shown in the Specified Loads table.
- Transfer reactions may differ from design results as allowed per building codes and standard load distribution practices.
- This report is based on modeled conditions input by the user. Source information for the loads and supports are provided for reference only. Verify that all loads and support conditions are correct.
- Review all loads and reactions to ensure that the member/bearing/connector/structure can resist adequately. Unless already specified on this report, anchorage for uplift reactions to be specified by others. Installation of member and accessories (if required) as per manufacturer's instruction.
- When the applied loads are coming from a member/post/wall above that does not sit directly on this beam, adequate load transfer elements, such as squash blocks, wall studs, or beveled plates are required to transfer the loads to this beam.

#### PLY TO PLY CONNECTION

Member design assumed proper ply to ply connection by others. Fastener spacing along length of member must not exceed 4 times depth of member. Verify connection between plies according to code specification and follow the manufacturer's installation instruction. Loads assumed to be distributed equally to each ply.



SE-039883



BC CALC® Member Report

Dry | 1 span | No cant.

November 5, 2021 16:43:59

Build 7773

Job name: 45147(3104)

File name: 333182-A.mmdl

Address: Pine Valley

Description: 2nd Floor - Supply/BOM\Flush Beams\B10(i19934)

City, Province, Postal Code: Vaughan, ON

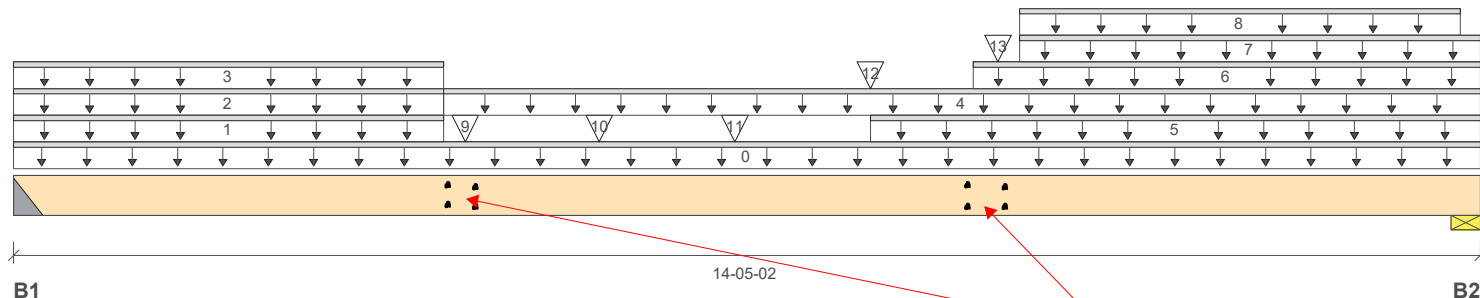
Specifier:

Customer: Gold Park

Designer: NL

Code reports: CCMC 12472-R

Company: Alpa Roof Trusses



### Reaction Summary (Down / Uplift) (lbs)

Bearing	Live	Dead	Snow	Wind
B1, 2"	622 / 0	1869 / 0	1250 / 0	
B2, 2-3/8"	617 / 0	1858 / 0	1227 / 0	

### Load Summary

Tag	Description	Load Type	Ref.	Start	End	Loc.	Live 1.00	Dead 0.65	Snow 1.00	Wind 1.15	Tributary
0	Self-Weight	Unf. Lin. (lb/ft)	L	00-00-00	14-05-02	Top		12			00-00-00
1	E18(i19247)	Unf. Lin. (lb/ft)	L	00-00-00	04-02-12	Top		96	53		n/a
2	User Load	Unf. Lin. (lb/ft)	L	00-00-00	04-02-12	Top		56	84		n/a
3	FC1 Floor Decking (Plan View Fill)	Unf. Lin. (lb/ft)	L	00-00-00	04-02-12	Top	31	15			n/a
4	FC1 Floor Decking (Plan View Fill)	Unf. Lin. (lb/ft)	L	04-02-12	14-05-02	Top	28	14			n/a
5	FC1 Floor Decking (Plan View Fill)	Unf. Lin. (lb/ft)	L	08-05-02	14-05-02	Top	6				n/a
6	E22(i19249)	Unf. Lin. (lb/ft)	L	09-05-04	14-05-02	Top		61			n/a
7	E22(i19249)	Unf. Lin. (lb/ft)	L	09-10-12	14-05-02	Top		35	53		n/a
8	User Load	Unf. Lin. (lb/ft)	L	09-10-12	14-02-12	Top		56	84		n/a
9	-	Conc. Pt. (lbs)	L	04-05-05	04-05-05	Top	104	847	649		n/a
10	J4(i19933)	Conc. Pt. (lbs)	L	05-09-02	05-09-02	Top	198	99			n/a
11	J4(i19843)	Conc. Pt. (lbs)	L	07-01-02	07-01-02	Top	188	94			n/a
12	J4(i19888)	Conc. Pt. (lbs)	L	08-05-02	08-05-02	Top	194	97			n/a
13	-	Conc. Pt. (lbs)	L	09-08-03	09-08-03	Top	99	845	649		n/a

### Controls Summary

	Factored Demand	Factored Resistance	Demand/Resistance	Case	Location
Pos. Moment	17753 ft-lbs	35392 ft-lbs	50.2%	13	07-01-02
End Shear	4302 lbs	14464 lbs	29.7%	13	01-01-14
Total Load Deflection	L/321 (0.531")	n/a	74.8%	35	07-03-02
Live Load Deflection	L/632 (0.27")	n/a	57.0%	51	07-03-02
Max Defl.	0.531"	n/a	n/a	35	07-03-02
Span / Depth	14.3				

### Bearing Supports

	Dim. (LxW)	Demand	Demand/Resistance Support	Demand/Resistance Member	Material
B1	Hanger 2" x 3-1/2"	4833 lbs	n/a	56.6%	HGUS410
B2	Wall/Plate 2-3/8" x 3-1/2"	4780 lbs	93.5%	47.1%	Spruce-Pine-Fir

 NAIL ONE PLY TO ANOTHER WITH 3 1/2" SPIRAL NAILS  
 @ 12" O.C., STAGGERED IN TWO ROWS


SE-039884

BC CALC® Member Report

Dry | 1 span | No cant.

November 5, 2021 16:43:59

Build 7773

Job name: 45147(3104)

File name: 333182-A.mmdl

Address: Pine Valley

Description: 2nd Floor - Supply/BOM\Flush Beams\B10(i19934)

City, Province, Postal Code: Vaughan, ON

Specifier:

Customer: Gold Park

Designer: NL

Code reports: CCMC 12472-R

Company: Alpa Roof Trusses

## Notes

Design meets Code minimum (L/240) Total load deflection criteria.

Design meets Code minimum (L/360) Live load deflection criteria.

Hanger Manufacturer: Unassigned

Resistance Factor phi has been applied to all presented results per CSA O86.

BC CALC® analysis is based on Canadian Limit States Design, as per NBCC 2015 and CSA O86.

Unbalanced snow loads determined from building geometry were used in selected product's verification.

Design based on Dry Service Condition.

Importance Factor : Normal Part code : Part 9

Calculations assume unbraced length of Top: 00-00-00, Bottom: 04-04-00.



## Disclosure

Use of the Boise Cascade Software is subject to the terms of the End User License Agreement (EULA). Completeness and accuracy of input must be reviewed and verified by a qualified engineer or other appropriate expert to assure its adequacy, prior to anyone relying on such output as evidence of suitability for a particular application. The output here is based on building code-accepted design properties and analysis methods. Installation of Boise Cascade engineered wood products must be in accordance with current Installation Guide and applicable building codes. To obtain Installation Guide or ask questions, please call (800)232-0788 before installation.

SE039884(2)

BC CALC®, BC FRAMER®, AJS™, ALLJOIST®, BC RIM BOARD™, BCI®, BOISE GLULAM™, BC FloorValue®, VERSA-LAM®, VERSA-RIM PLUS®,

BC CALC® Member Report

Dry | 1 span | No cant.

November 5, 2021 16:43:59

Build 7773

Job name: 45147(3104)

File name: 333182-A.mmdl

Address: Pine Valley

Description: 2nd Floor - Supply/BOM\Flush Beams\B11(i19809)

City, Province, Postal Code: Vaughan, ON

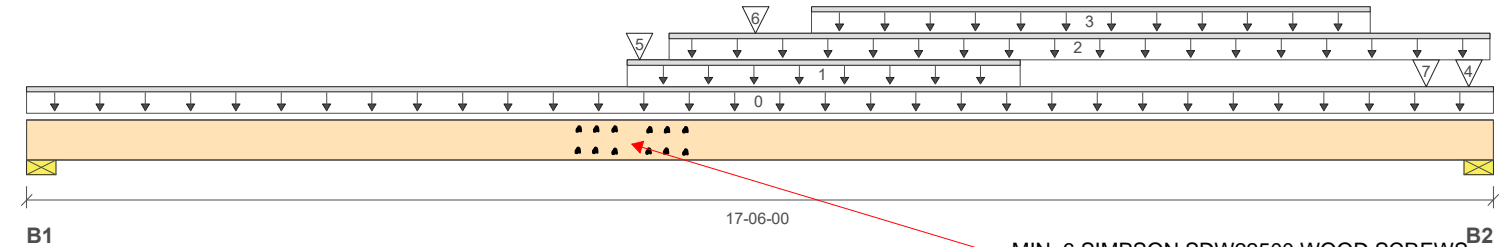
Specifier:

Customer: Gold Park

Designer: NL

Code reports: CCMC 12472-R

Company: Alpa Roof Trusses



### Reaction Summary (Down / Uplift) (lbs)

Bearing	Live	Dead	Snow	Wind
B1, 5-1/2"	1123 / 0	1854 / 0	796 / 0	
B2, 6"	2456 / 0	3056 / 0	587 / 0	

### Load Summary

Tag	Description	Load Type	Ref.	Start	End	Loc.	Live 1.00	Dead 0.65	Snow 1.00	Wind 1.15	Tributary
0	Self-Weight	Unf. Lin. (lb/ft)	L	00-00-00	17-06-00	Top		18			00-00-00
1	User Load	Unf. Lin. (lb/ft)	L	07-02-00	11-10-04	Top		14	21		n/a
2	E17(i19244)	Unf. Lin. (lb/ft)	L	07-08-00	17-05-08	Top		61			n/a
3	Smoothed Load	Unf. Lin. (lb/ft)	L	09-04-06	16-00-06	Top	304	152			n/a
4	B8(i19764)	Conc. Pt. (lbs)	L	17-02-08	17-02-08	Top	112	588			n/a
5	-	Conc. Pt. (lbs)	L	07-03-12	07-03-12	Top	635	1891	1285		n/a
6	J1(i19927)	Conc. Pt. (lbs)	L	08-08-06	08-08-06	Top	425	212			n/a
7	J1(i19840)	Conc. Pt. (lbs)	L	16-08-06	16-08-06	Top	374	187			n/a

### Controls Summary

	Factored Demand	Factored Resistance	Demand/Resistance	Case	Location
Pos. Moment	32587 ft-lbs	48760 ft-lbs	66.8%	1	07-04-12
End Shear	6480 lbs	21696 lbs	29.9%	1	16-00-02
Total Load Deflection	L/246 (0.812")	n/a	97.4%	35	08-08-06
Live Load Deflection	L/469 (0.426")	n/a	76.7%	51	08-08-06
Max Defl.	0.812"	n/a	n/a	35	08-08-06
Span / Depth	16.8				

### Bearing Supports

	Dim. (LxW)	Demand	Demand/Resistance Support	Demand/Resistance Member	Material
B1	Wall/Plate 5-1/2" x 5-1/4"	4798 lbs	27.0%	13.6%	Spruce-Pine-Fir
B2	Wall/Plate 6" x 5-1/4"	8091 lbs	41.8%	21.1%	Spruce-Pine-Fir

### Notes

Design meets Code minimum (L/240) Total load deflection criteria.  
 Design meets Code minimum (L/360) Live load deflection criteria.  
 Resistance Factor phi has been applied to all presented results per CSA O86.  
 BC CALC® analysis is based on Canadian Limit States Design, as per NBCC 2015 and CSA O86.  
 Unbalanced snow loads determined from building geometry were used in selected product's verification.  
 Design based on Dry Service Condition.  
 Importance Factor : Normal Part code : Part 9  
 Calculations assume unbraced length of Top: 07-02-00, Bottom: 06-08-08.

NAIL ONE PLY TO ANOTHER WITH 3 1/2" SPIRAL NAILS  
 @ 4" O.C., STAGGERED IN TWO ROWS





Customer: **Gold Park**  
 Job Address: **Pine Valley**  
 City: **Vaughan**  
 Job Track: **45147(3104)**

Job Name: **333182-A**  
 Level: **1st Floor - Supply/BOM**  
 Label: **B12 - i20252**  
 Type: **Beam**

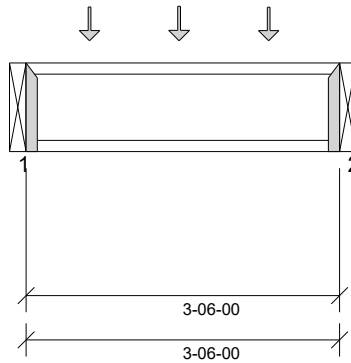
**1 Ply Member**  
**11 7/8" NI-20**

Status:  
**Design Passed**

Illustration Not to Scale. Pitch: 0/12

Designed by Single Member Design Engine in MiTek® Structure version  
 8.4.2.286 Updated 13

Report Version: 2020.06.20 11/05/2021 16:49



#### DESIGN INFORMATION

Building Code: NBCC 2015, Part9, BCBC 2018, ABC 2019, OBC 2012 (2019 Amendment)

Design Methodology: LSD

Service Condition: Dry

LL Deflection Limit: L/360,

TL Deflection Limit: L/240,

#### Lateral Restraint Requirements:

Both ends of the member and the outer supports must be laterally restrained. Top and bottom edges of the member must be fully restrained or have the following maximum unbraced length:

Top: 0' Bottom: 0'- 9 1/2"

#### Factored Resistance of Support Material:

- 769 psi Beam @ 0'
- 769 psi Beam @ 3'- 6"

#### ANALYSIS RESULTS

Design Criteria	Location	Load Combination	LDF	Design	Limit	Result
Factored Pos. Moment:	1'- 8 1/2"	1.25D + 1.5L	1.00	411 lb ft	5580 lb ft	Passed - 7%
Factored Shear:	0'- 1/16"	1.25D + 1.5L	1.00	387 lb	2240 lb	Passed - 17%

#### SUPPORT AND REACTION INFORMATION

ID	Input Bearing Length	Controlling Load Combination	LDF	Factored Downward Reaction	Factored Uplift Reaction	Factored Resistance of Member	Factored Resistance of Support	Result
1	1-12	1.25D + 1.5L	1.00	387 lb		1970 lb	-	Passed - 20%
2	1-12	1.25D + 1.5L	1.00	368 lb		1970 lb	-	Passed - 19%

#### CONNECTOR INFORMATION

ID	Part No.	Manufacturer	Nailing Requirements			Other Information or Requirement for Reinforcement Accessories
			Top	Face	Member	
1	HU310		-	-	-	Connector manually specified by the user.
2	LT251188		-	-	-	Connector manually specified by the user.

\* Connectors: Refer to manufacturer's specifications, fasteners requirements and installation instruction. Where header fasteners are longer than the width of the supporting member, install backer block or clinch header nails.

#### SPECIFIED LOADS

Type	Start Loc	End Loc	Source	Face	Dead (D)	Live (L)	Snow (S)	Wind (W)
Self Weight	0'	3'- 6"	Self Weight	Top	3 lb/ft	-	-	-
Point	0'- 8 1/2"	0'- 8 1/2"	J3(i20279)	Back	58 lb	115 lb	-	-
Point	1'- 8 1/2"	1'- 8 1/2"	J3(i20236)	Back	60 lb	120 lb	-	-
Point	2'- 8 1/2"	2'- 8 1/2"	J3(i20294)	Back	57 lb	114 lb	-	-

#### UNFACTORED REACTIONS

ID	Start Loc	End Loc	Source	Dead (D)	Live (L)	Snow (S)	Wind (W)
1	0'	0'	STL BM REQ'D(FL.)(i20046)	95 lb	179 lb	-	-
2	3'- 6"	3'- 6"	B13(i20268)	90 lb	170 lb	-	-

#### DESIGN NOTES

- The dead loads used in the design of this member were applied to the structure as projected dead loads.
- Analysis and Design has been performed using precision loading from actual modeled conditions. Some loads may have been modified to simplify reporting.
- Tributary Loads have been generated based on actual spacing between members in the model which may differ from the default system spacing. The actual loads applied to the member are shown in the Specified Loads table.
- Transfer reactions may differ from design results as allowed per building codes and standard load distribution practices.
- This report is based on modeled conditions input by the user. Source information for the loads and supports are provided for reference only. Verify that all loads and support conditions are correct.
- Review all loads and reactions to ensure that the member/bearing/connector/structure can resist adequately. Unless already specified on this report, anchorage for uplift reactions to be specified by others. Installation of member and accessories (if required) as per manufacturer's instruction.
- When the applied loads are coming from a member/post/wall above that does not sit directly on this beam, adequate load transfer elements, such as squash blocks, wall studs, or beveled plates are required to transfer the loads to this beam.



SE-039886



Customer: **Gold Park**  
Job Address: **Pine Valley**  
City: **Vaughan**  
Job Track: **45147(3104)**

Job Name: **333182-A**  
Level: **1st Floor - Supply/BOM**  
Label: **B13 - i20268**  
Type: **Beam**

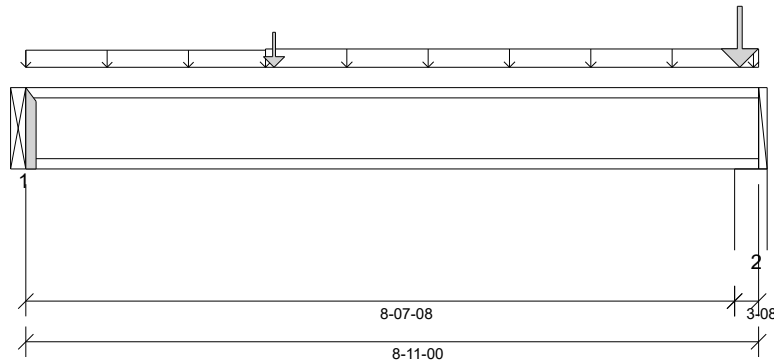
**1 Ply Member**  
**11 7/8" NI-20**

Status:  
**Design Passed**

Illustration Not to Scale. Pitch: 0/12

Designed by Single Member Design Engine in MiTek® Structure version  
8.4.2.2861 Undated 9.13

Report Version: 2020.06.20 11/05/2021 16:49



#### DESIGN INFORMATION

Building Code: NBCC 2015, Part9, BCBC 2018, ABC 2019, OBC 2012 (2019 Amendment)  
Design Methodology: LSD  
Service Condition: Dry  
LL Deflection Limit: L/360,  
TL Deflection Limit: L/240,

#### Lateral Restraint Requirements:

Both ends of the member and the outer supports must be laterally restrained. Top and bottom edges of the member must be fully restrained or have the following maximum unbraced length:

Top: 0' Bottom: 5'- 6"

#### Factored Resistance of Support Material:

- 769 psi Beam @ 0'
- 615 psi Wall @ 8'- 8 1/2"

#### ANALYSIS RESULTS

Design Criteria	Location	Load Combination	LDF	Design	Limit	Result
Factored Pos. Moment:	3'- 1 3/4"	1.25D + 1.5L + S	1.00	1414 lb ft	5580 lb ft	Passed - 25%
Factored Shear:	0'- 1/16"	1.25D + 1.5L + S	1.00	553 lb	2240 lb	Passed - 25%
Live Load (LL) Pos. Defl.:	4'- 2 3/4"	L + 0.5S		0.043"	L/360	Passed - L/999
Total Load (TL) Pos. Defl.:	4'- 2 13/16"	D + L + 0.5S		0.067"	L/240	Passed - L/999

#### SUPPORT AND REACTION INFORMATION

ID	Input Bearing Length	Controlling Load Combination	LDF	Factored Downward Reaction	Factored Uplift Reaction	Factored Resistance of Member	Factored Resistance of Support	Result
1	1-12	1.25D + 1.5L + S	1.00	576 lb		1970 lb	-	Passed - 29%
2	3-08	1.25D + 1.5L + S	1.00	1353 lb		2180 lb	5383 lb	Passed - 62%

#### CONNECTOR INFORMATION

ID	Part No.	Manufacturer	Nailing Requirements			Other Information or Requirement for Reinforcement Accessories
			Top	Face	Member	
1	HUC310		-	-	-	Connector manually specified by the user.
* Connectors: Refer to manufacturer's specifications, fasteners requirements and installation instruction. Where header fasteners are longer than the width of the supporting member, install backer block or clinch header nails.						

#### SPECIFIED LOADS

Type	Start Loc	End Loc	Source	Face	Dead (D)	Live (L)	Snow (S)	Wind (W)
Self Weight	0'	8'- 11"	Self Weight	Top	3 lb/ft	-	-	-
Uniform	0'	2'- 11"	FC2 Floor Decking (Plan View Fill)	Top	12 lb/ft	25 lb/ft	-	-
Uniform	2'- 11"	8'- 11"	FC2 Floor Decking (Plan View Fill)	Top	20 lb/ft	41 lb/ft	-	-
Point	3'- 1/4"	3'- 1/4"	B12(i20252)	Back	90 lb	170 lb	-	-
Point	8'- 8 1/4"	8'- 8 1/4"	4(i19254)	Top	277 lb	323 lb	1 lb	-

#### UNFACTORED REACTIONS

ID	Start Loc	End Loc	Source	Dead (D)	Live (L)	Snow (S)	Wind (W)
1	0'	0'	B15(i20122)	147 lb	263 lb	-	-
2	8'- 7 1/2"	8'- 11"	W12(i19371)	409 lb	559 lb	1 lb	-

#### DESIGN NOTES

- The dead loads used in the design of this member were applied to the structure as projected dead loads.
- Analysis and Design has been performed using precision loading from actual modeled conditions. Some loads may have been modified to simplify reporting.
- Tributary Loads have been generated based on actual spacing between members in the model which may differ from the default system spacing. The actual loads applied to the member are shown in the Specified Loads table.
- Transfer reactions may differ from design results as allowed per building codes and standard load distribution practices.
- This report is based on modeled conditions input by the user. Source information for the loads and supports are provided for reference only. Verify that all loads and support conditions are correct.
- Review all loads and reactions to ensure that the member/bearing/connector/structure can resist adequately. Unless already specified on this report, anchorage for uplift reactions to be specified by others. Installation of member and accessories (if required) as per manufacturer's instruction.
- When the applied loads are coming from a member/post/wall above that does not sit directly on this beam, adequate load transfer elements, such as squash blocks, wall studs, or beveled plates are required to transfer the loads to this beam.



SE-039887





Customer: **Gold Park**  
 Job Address: **Pine Valley**  
 City: **Vaughan**  
 Job Track: **45147(3104)**

Job Name: **333182-A**  
 Level: **1st Floor - Supply/BOM**  
 Label: **B14 - i20075**  
 Type: **Beam**

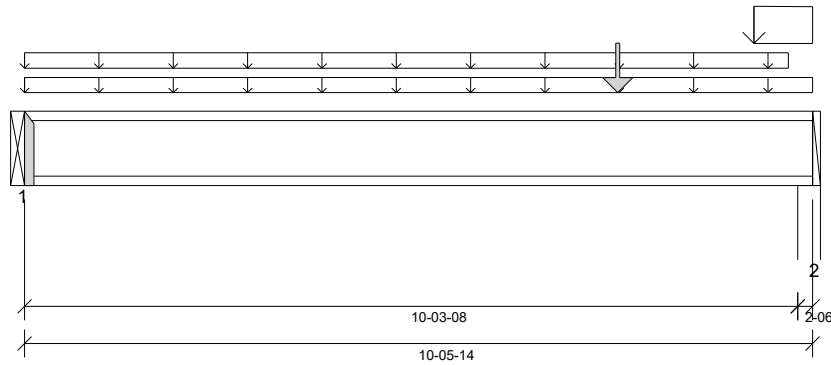
**2 Ply Member**  
**11 7/8" NI-20**

Status:  
**Design Passed**

Illustration Not to Scale. Pitch: 0/12

Designed by Single Member Design Engine in MiTek® Structure version  
 8.4.2.286 Updated 9.13

Report Version: 2020.06.20 11/05/2021 16:49



### DESIGN INFORMATION

Building Code: NBCC 2015, Part9, BCBC 2018, ABC 2019, OBC 2012 (2019 Amendment)  
 Design Methodology: LSD  
 Service Condition: Dry  
 LL Deflection Limit: L/360,  
 TL Deflection Limit: L/240,

#### Lateral Restraint Requirements:

Both ends of the member and the outer supports must be laterally restrained. Top and bottom edges of the member must be fully restrained or have the following maximum unbraced length:

Top: 0' Bottom: 10'- 3 1/2"

#### Factored Resistance of Support Material:

- 769 psi Beam @ 0'
- 615 psi Wall @ 10'- 4 1/2"

### ANALYSIS RESULTS

Design Criteria	Location	Load Combination	LDF	Design	Limit	Result
Factored Pos. Moment:	6'- 8 3/16"	1.25D + 1.5L	0.89	2058 lb ft	9913 lb ft	Passed - 21%
Factored Shear:	10'- 3 7/16"	1.25D + 1.5S + L	0.81	1120 lb	3618 lb	Passed - 31%
Live Load (LL) Pos. Defl.:	5'- 3 9/16"	L + 0.5S		0.030"	L/360	Passed - L/999
Total Load (TL) Pos. Defl.:	5'- 5 7/16"	D + L + 0.5S		0.070"	L/240	Passed - L/999

### SUPPORT AND REACTION INFORMATION

ID	Input Bearing Length	Controlling Load Combination	LDF	Factored Downward Reaction	Factored Uplift Reaction	Factored Resistance of Member	Factored Resistance of Support	Result
1	1-12	1.25D + 1.5L	0.89	651 lb		3940 lb	-	Passed - 17%
2	2-06	1.25D + 1.5S + L	0.81	1263 lb		3303 lb	5899 lb	Passed - 38%

### CONNECTOR INFORMATION

ID	Part No.	Manufacturer	Nailing Requirements			Other Information or Requirement for Reinforcement Accessories
			Top	Face	Member	
1	MIT311.88-2		-	-	-	Connector manually specified by the user.
* Connectors: Refer to manufacturer's specifications, fasteners requirements and installation instruction. Where header fasteners are longer than the width of the supporting member, install backer block or clinch header nails.						

### SPECIFIED LOADS

Type	Start Loc	End Loc	Source	Face	Dead (D)	Live (L)	Snow (S)	Wind (W)
Self Weight	0'	10'- 5 7/8"	Self Weight	Top	6 lb/ft	-	-	-
Uniform	0'	10'- 5 7/8"	FC2 Floor Decking (Plan View Fill)	Top	9 lb/ft	17 lb/ft	-	-
Uniform	0'	10'- 2"	FC2 Floor Decking (Plan View Fill)	Top	11 lb/ft	23 lb/ft	-	-
Uniform	9'- 8 1/2"	10'- 5 7/8"	E3(i19211)	Top	347 lb/ft	41 lb/ft	115 lb/ft	-
Point	7'- 10 3/4"	7'- 10 3/4"	Pt1(i20115)	Top	347 lb	67 lb	11 lb	-

### UNFACTORED REACTIONS

ID	Start Loc	End Loc	Source	Dead (D)	Live (L)	Snow (S)	Wind (W)
1	0'	0'	B15(i20122)	232 lb	241 lb	5 lb	-
2	10'- 3 1/2"	10'- 5 7/8"	W14(i19370)	661 lb	293 lb	96 lb	-

### DESIGN NOTES

- The dead loads used in the design of this member were applied to the structure as projected dead loads.
- Analysis and Design has been performed using precision loading from actual modeled conditions. Some loads may have been modified to simplify reporting.
- Tributary Loads have been generated based on actual spacing between members in the model which may differ from the default system spacing. The actual loads applied to the member are shown in the Specified Loads table.
- Transfer reactions may differ from design results as allowed per building codes and standard load distribution practices.
- This report is based on modeled conditions input by the user. Source information for the loads and supports are provided for reference only. Verify that all loads and support conditions are correct.
- Review all loads and reactions to ensure that the member/bearing/connector/structure can resist adequately. Unless already specified on this report, anchorage for uplift reactions to be specified by others. Installation of member and accessories (if required) as per manufacturer's instruction.
- When the applied loads are coming from a member/post/wall above that does not sit directly on this beam, adequate load transfer elements, such as squash blocks, wall studs, or beveled plates are required to transfer the loads to this beam.

### PLY TO PLY CONNECTION

Member design assumed proper ply to ply connection by others. Fastener spacing along length of member must not exceed 4 times depth of member. Verify connection between plies according to code specification and follow the manufacturer's installation instruction. Loads assumed to be distributed equally to each ply.



SE-039888



Customer: **Gold Park**  
Job Address: **Pine Valley**  
City: **Vaughan**  
Job Track: **45147(3104)**

Job Name: **333182-A**  
Level: **1st Floor - Supply/BOM**  
Label: **B15 - i20122**  
Type: **Beam**

**2 Ply Member**  
**11 7/8" NI-20**

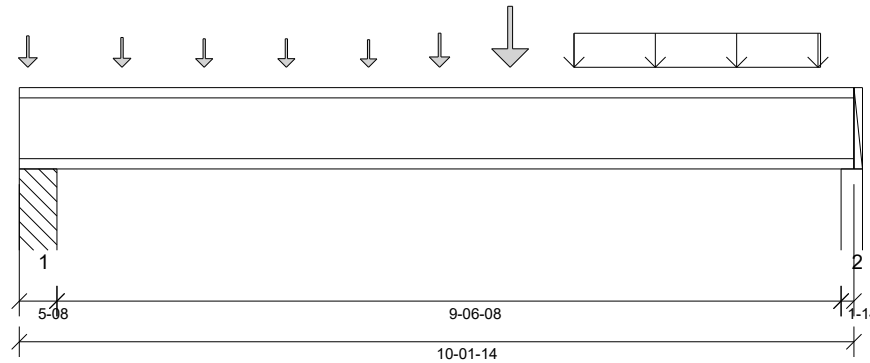
Status:  
**Design Passed**

Illustration Not to Scale. Pitch: 0/12

Designed by Single Member Design Engine in Mitek® Structure version  
8.4.2.2861 Updated 9.13

Report Version: 2020.06.20

11/05/2021 16:49



#### DESIGN INFORMATION

Building Code: NBCC 2015, Part9, BCBC 2018, ABC 2019, OBC 2012 (2019 Amendment)  
Design Methodology: LSD  
Service Condition: Dry  
LL Deflection Limit: L/360,  
TL Deflection Limit: L/240,

#### Lateral Restraint Requirements:

Both ends of the member and the outer supports must be laterally restrained. Top and bottom edges of the member must be fully restrained or have the following maximum unbraced length:

Top: 0' Bottom: 0'- 11 1/4"

#### Factored Resistance of Support Material:

- 1334 psi Column @ 0'- 4 1/2"
- 615 psi Wall @ 10'- 1"

#### ANALYSIS RESULTS

Design Criteria	Location	Load Combination	LDF	Design	Limit	Result
Factored Pos. Moment:	5'- 10"	1.25D + 1.5L + S	1.00	8771 lb ft	11160 lb ft	Passed - 79%
Factored Neg. Moment:	0'- 4 1/2"	1.25D + 1.5L + S	1.00	157 lb ft	11160 lb ft	Passed - 1%
Factored Shear:	9'- 11 15/16"	1.25D + 1.5L + S	1.00	3027 lb	4480 lb	Passed - 68%
Live Load (LL) Pos. Defl.:	5'- 3 5/8"	L + 0.5S		0.160"	L/360	Passed - L/716
Total Load (TL) Pos. Defl.:	5'- 3 9/16"	D + L + 0.5S		0.245"	L/240	Passed - L/467

#### SUPPORT AND REACTION INFORMATION

ID	Input Bearing Length	Controlling Load Combination	LDF	Factored Downward Reaction	Factored Uplift Reaction	Factored Resistance of Member	Factored Resistance of Support	Result
1	5-08	1.25D + 1.5L + S	1.00	3428 lb		4480 lb	36695 lb	Passed - 77%
2	1-14	1.25D + 1.5L + S	1.00	3028 lb		3970 lb	5767 lb	Passed - 76%

#### SPECIFIED LOADS

Type	Start Loc	End Loc	Source	Face	Dead (D)	Live (L)	Snow (S)	Wind (W)
Self Weight	0'	10'- 1 7/8"	Self Weight	Top	6 lb/ft	-	-	-
Uniform	6'- 9"	9'- 9"	Smoothed Load	Back	120 lb/ft	250 lb/ft	-	-
Point	0'- 1 1/4"	0'- 1 1/4"	B13(i20268)	Back	147 lb	263 lb	-	-
Point	1'- 3"	1'- 3"	J1(i20320)	Back	123 lb	246 lb	-	-
Point	2'- 3"	2'- 3"	J1(i20262)	Back	112 lb	224 lb	-	-
Point	3'- 3"	3'- 3"	J1(i20337)	Back	112 lb	224 lb	-	-
Point	4'- 3"	4'- 3"	J1(i20278)	Back	104 lb	209 lb	-	-
Point	5'- 1 3/8"	5'- 1 3/8"	B14(i20075)	Back	232 lb	241 lb	5 lb	-
Point	5'- 11 11/16"	5'- 11 11/16"	-	Back	337 lb	821 lb	-	-

#### UNFACTORED REACTIONS

ID	Start Loc	End Loc	Source	Dead (D)	Live (L)	Snow (S)	Wind (W)
1	0'	0'- 5 1/2"	Pt1(i20289)	852 lb	1569 lb	3 lb	-
2	10'	10'- 1 7/8"	W8(i9229)	734 lb	1410 lb	2 lb	-

#### DESIGN NOTES

- The dead loads used in the design of this member were applied to the structure as projected dead loads.
- Analysis and Design has been performed using precision loading from actual modeled conditions. Some loads may have been modified to simplify reporting.
- Tributary Loads have been generated based on actual spacing between members in the model which may differ from the default system spacing. The actual loads applied to the member are shown in the Specified Loads table.
- Transfer reactions may differ from design results as allowed per building codes and standard load distribution practices.
- This report is based on modeled conditions input by the user. Source information for the loads and supports are provided for reference only. Verify that all loads and support conditions are correct.
- Review all loads and reactions to ensure that the member/bearing/connector/structure can resist adequately. Unless already specified on this report, anchorage for uplift reactions to be specified by others. Installation of member and accessories (if required) as per manufacturer's instruction.
- When the applied loads are coming from a member/post/wall above that does not sit directly on this beam, adequate load transfer elements, such as squash blocks, wall studs, or beveled plates are required to transfer the loads to this beam.

#### PLY TO PLY CONNECTION

Member design assumed proper ply to ply connection by others. Fastener spacing along length of member must not exceed 4 times depth of member. Verify connection between plies according to code specification and follow the manufacturer's installation instruction. Loads assumed to be distributed equally to each ply.



SE-039889

BC CALC® Member Report

Dry | 1 span | No cant.

November 6, 2021 08:59:04

Build 7773

Job name: 45147(3104)

File name: 333182-A.mmdl

Address: Pine Valley

Description: 1st Floor - Supply/BOM\Flush Beams\B16(i20678)

City, Province, Postal Code: Vaughan, ON

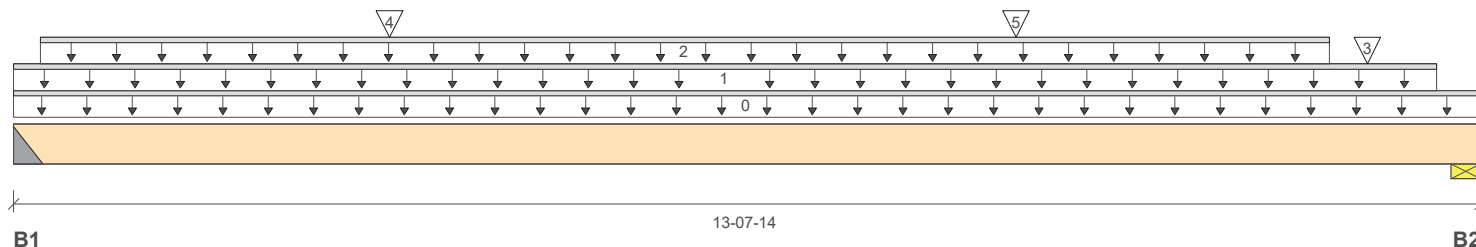
Specifier:

Customer: Gold Park

Designer: NL

Code reports: CCMC 12472-R

Company: Alpa Roof Trusses



Total Horizontal Product Length = 13-07-14

### Reaction Summary (Down / Uplift) (lbs)

Bearing	Live	Dead	Snow	Wind
B1, 2"	1366 / 0	1115 / 0		
B2, 1-7/8"	1209 / 0	1017 / 0		

### Load Summary

Tag	Description	Load Type	Ref.	Start	End	Loc.	Live 1.00	Dead 0.65	Snow 1.00	Wind 1.15	Tributary
0	Self-Weight	Unf. Lin. (lb/ft)	L	00-00-00	13-07-14	Top		12			00-00-00
1	User Load	Unf. Lin. (lb/ft)	L	00-00-00	13-03-00	Top		60			n/a
2	Smoothed Load	Unf. Lin. (lb/ft)	L	00-03-00	12-03-00	Top	136	68			n/a
3	J5(i20259)	Conc. Pt. (lbs)	L	12-07-04	12-07-04	Top	29				n/a
4	User Load	Conc. Pt. (lbs)	L	03-06-00	03-06-00	Top	440	165			n/a
5	User Load	Conc. Pt. (lbs)	L	09-04-00	09-04-00	Top	480	180			n/a

### Controls Summary

	Factored Demand	Factored Resistance	Demand/Resistance	Case	Location
Pos. Moment	11974 ft-lbs	35392 ft-lbs	33.8%	1	06-09-00
End Shear	3222 lbs	14464 lbs	22.3%	1	01-01-14
Total Load Deflection	L/553 (0.292")	n/a	43.4%	4	06-09-00
Live Load Deflection	L/987 (0.164")	n/a	36.5%	5	06-09-00
Max Defl.	0.292"	n/a	n/a	4	06-09-00
Span / Depth	13.6				

### Bearing Supports

	Dim. (LxW)	Demand	Demand/Resistance Support	Demand/Resistance Member	Material
B1 Hanger	2" x 3-1/2"	3443 lbs	n/a	40.3%	HGUS410
B2 Wall/Plate	1-7/8" x 3-1/2"	3085 lbs	76.4%	38.5%	Spruce-Pine-Fir

### Notes

Design meets Code minimum (L/240) Total load deflection criteria.  
 Design meets Code minimum (L/360) Live load deflection criteria.  
 Hanger Manufacturer: Unassigned  
 Resistance Factor phi has been applied to all presented results per CSA O86.  
 BC CALC® analysis is based on Canadian Limit States Design, as per NBCC 2015 and CSA O86.  
 Design based on Dry Service Condition.  
 Importance Factor : Normal Part code : Part 9  
 Calculations assume unbraced length of Top: 00-00-00, Bottom: 00-09-08.



NAIL ONE PLY TO ANOTHER WITH 3 1/2" SPIRAL NAILS  
 @ 6" O.C., STAGGERED IN TWO ROWS

SE-039890



BC CALC® Member Report

Dry | 1 span | No cant.

November 6, 2021 08:59:04

Build 7773

Job name: 45147(3104)

File name: 333182-A.mmdl

Address: Pine Valley

Description: 1st Floor - Supply/BOM\Flush Beams\B18(i20664)

City, Province, Postal Code: Vaughan, ON

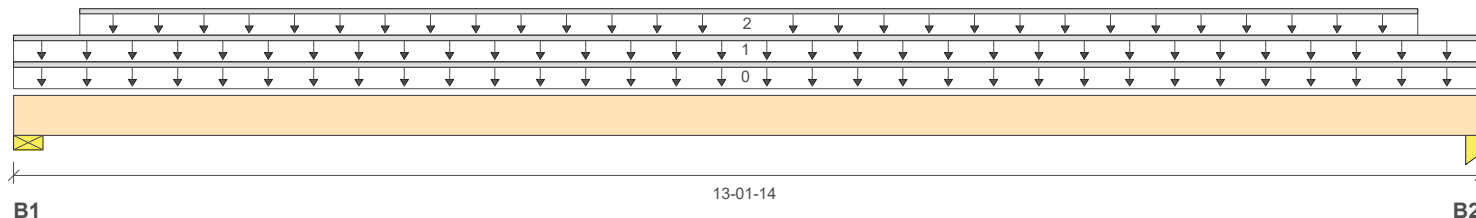
Specifier:

Customer: Gold Park

Designer: NL

Code reports: CCMC 12472-R

Company: Alpa Roof Trusses



Total Horizontal Product Length = 13-01-14

### Reaction Summary (Down / Uplift) (lbs)

Bearing	Live	Dead	Snow	Wind
B1, 1-7/8"	2194 / 0	1217 / 0		
B2, 2-3/4"	2214 / 0	1228 / 0		

### Load Summary

Tag	Description	Load Type	Ref.	Start	End	Loc.	Live	Dead	Snow	Wind	Tributary
0	Self-Weight	Unf. Lin. (lb/ft)	L	00-00-00	13-01-14	Top	1.00	0.65	1.00	1.15	00-00-00
1	FC2 Floor Decking (Plan View Fill)	Unf. Lin. (lb/ft)	L	00-00-00	13-01-14	Top	17	9			n/a
2	Smoothed Load	Unf. Lin. (lb/ft)	L	00-07-02	12-07-02	Top	346	174			n/a

### Controls Summary

	Factored Demand	Factored Resistance	Demand/Resistance	Case	Location
Pos. Moment	16664 ft-lbs	55211 ft-lbs	30.2%	1	06-07-02
End Shear	4784 lbs	21696 lbs	22.1%	1	11-11-04
Total Load Deflection	L/646 (0.24")	n/a	37.2%	4	06-07-02
Live Load Deflection	L/1001 (0.155")	n/a	35.9%	5	06-07-02
Max Defl.	0.24"	n/a	n/a	4	06-07-02
Span / Depth	13.0				

### Bearing Supports

	Dim. (LxW)	Demand	Demand/Resistance Support	Demand/Resistance Member	Material
B1	Wall/Plate 1-7/8" x 5-1/4"	4813 lbs	79.5%	40.1%	Spruce-Pine-Fir
B2	Column 2-3/4" x 5-1/4"	4856 lbs	19.4%	27.6%	Spruce-Pine-Fir

### Notes

Design meets Code minimum (L/240) Total load deflection criteria.  
 Design meets Code minimum (L/360) Live load deflection criteria.  
 Resistance Factor phi has been applied to all presented results per CSA O86.  
 BC CALC® analysis is based on Canadian Limit States Design, as per NBCC 2015 and CSA O86.  
 Design based on Dry Service Condition.  
 Importance Factor : Normal Part code : Part 9  
 Calculations assume unbraced length of Top: 00-00-00, Bottom: 01-01-08.



NAIL ONE PLY TO ANOTHER WITH 3 1/2" SPIRAL NAILS  
 @ 5" O.C., STAGGERED IN TWO ROWS

SE-039891

# Triple 1-3/4" x 11-7/8" VERSA-LAM® 2.0 3100 SP

## 1st Floor - Supply/BOM\Flush Beams\B19(i20707) (Flush Beam)

**PASSED**

BC CALC® Member Report

Dry | 1 span | No cant.

November 6, 2021 08:59:04

Build 7773

Job name: 45147(3104)

File name: 333182-A.mmdl

Address: Pine Valley

Description: 1st Floor - Supply/BOM\Flush Beams\B19(i20707)

City, Province, Postal Code: Vaughan, ON

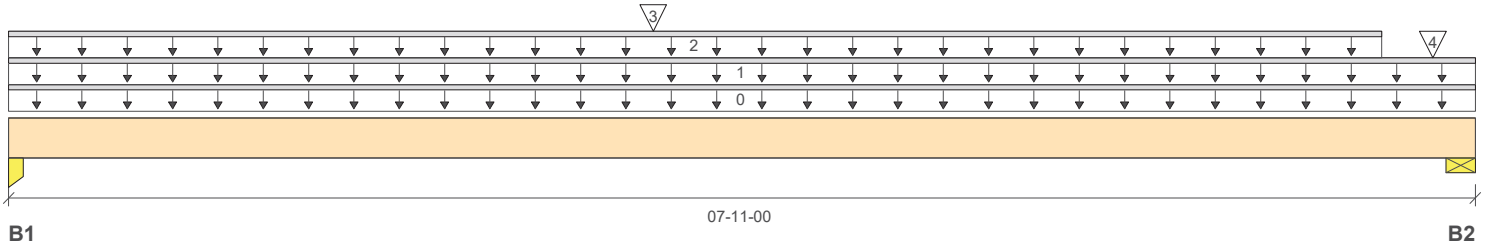
Specifier:

Customer: Gold Park

Designer: NL

Code reports: CCMC 12472-R

Company: Alpa Roof Trusses



Total Horizontal Product Length = 07-11-00

### Reaction Summary (Down / Uplift) (lbs)

Bearing	Live	Dead	Snow	Wind
B1, 2-3/4"	3092 / 0	2652 / 0	322 / 0	
B2, 3-1/2"	2552 / 0	2181 / 0	254 / 0	

### Load Summary

Tag	Description	Load Type	Ref.	Start	End	Loc.	Live 1.00	Dead 0.65	Snow 1.00	Wind 1.15	Tributary
0	Self-Weight	Unf. Lin. (lb/ft)	L	00-00-00	07-11-00	Top		18			00-00-00
1	FC2 Floor Decking (Plan View Fill)	Unf. Lin. (lb/ft)	L	00-00-00	07-11-00	Top	17	9			n\ a
2	Smoothed Load	Unf. Lin. (lb/ft)	L	00-00-00	07-04-15	Top	374	187			n\ a
3	7(i19259)	Conc. Pt. (lbs)	L	03-05-12	03-05-12	Top	2610	3152	576		n\ a
4	2(i19256)	Conc. Pt. (lbs)	L	07-08-04	07-08-04	Top	129	82			n\ a

### Controls Summary

	Factored Demand	Factored Resistance	Demand/ Resistance	Case	Location
Pos. Moment	21096 ft-lbs	55211 ft-lbs	38.2%	1	03-05-12
End Shear	7228 lbs	21696 lbs	33.3%	1	01-02-10
Total Load Deflection	L/999 (0.093")	n\ a	n\ a	35	03-09-06
Live Load Deflection	L/999 (0.05")	n\ a	n\ a	51	03-09-06
Max Defl.	0.093"	n\ a	n\ a	35	03-09-06
Span / Depth	7.6				

### Bearing Supports

	Dim. (LxW)	Demand	Demand/ Resistance Support	Demand/ Resistance Member	Material
B1	Column 2-3/4" x 5-1/4"	8275 lbs	33.0%	47.0%	Spruce-Pine-Fir
B2	Wall/Plate 3-1/2" x 5-1/4"	6808 lbs	60.2%	30.4%	Spruce-Pine-Fir

### Notes

Design meets Code minimum (L/240) Total load deflection criteria.  
 Design meets Code minimum (L/360) Live load deflection criteria.  
 Resistance Factor phi has been applied to all presented results per CSA O86.  
 BC CALC® analysis is based on Canadian Limit States Design, as per NBCC 2015 and CSA O86.  
 Unbalanced snow loads determined from building geometry were used in selected product's verification.  
 Design based on Dry Service Condition.  
 Importance Factor : Normal Part code : Part 9  
 Calculations assume unbraced length of Top: 00-00-00, Bottom: 01-01-08.



NAIL ONE PLY TO ANOTHER WITH 3 1/2" SPIRAL NAILS  
 @ 5" O.C., STAGGERED IN TWO ROWS

SE-039892

## Maximum Floor Spans – M7.1, L/360

### Design Criteria

Spans:	Simple span
Loads:	Live load = 40 psf and dead load = 20 psf
Deflection limits:	L/360 under live load and L/240 under total load
Sheathing:	3/4 in. nailed-glued Canadian softwood plywood



### Maximum Floor Spans

Joist depth	Joist series	Bare On centre spacing				1/2 in. gypsum ceiling On centre spacing			
		12"	16"	19.2"	24"	12"	16"	19.2"	24"
9-1/2"	NI-20	15'-10"	15'-0"	14'-5"	13'-5"	16'-4"	15'-5"	14'-6"	13'-5"
	NI-40x	16'-11"	15'-11"	15'-4"	14'-9"	17'-4"	16'-4"	15'-9"	14'-11"
	NI-60	17'-1"	16'-1"	15'-6"	14'-10"	17'-6"	16'-6"	15'-11"	15'-3"
	NI-80	18'-1"	17'-0"	16'-4"	15'-8"	18'-7"	17'-4"	16'-8"	16'-0"
11-7/8"	NI-20	17'-10"	16'-10"	16'-2"	15'-7"	18'-5"	17'-4"	16'-9"	16'-1"
	NI-40x	19'-3"	17'-10"	17'-2"	16'-6"	19'-10"	18'-5"	17'-8"	16'-11"
	NI-60	19'-6"	18'-1"	17'-4"	16'-8"	20'-1"	18'-8"	17'-10"	17'-1"
	NI-80	20'-11"	19'-4"	18'-5"	17'-7"	21'-5"	19'-10"	18'-11"	17'-11"
	NI-90	21'-4"	19'-9"	18'-9"	17'-10"	21'-10"	20'-3"	19'-3"	18'-3"
14"	NI-40x	21'-4"	19'-9"	18'-10"	17'-11"	22'-0"	20'-5"	19'-6"	18'-6"
	NI-60	21'-8"	20'-1"	19'-2"	18'-2"	22'-4"	20'-9"	19'-9"	18'-9"
	NI-80	23'-3"	21'-6"	20'-5"	19'-4"	23'-10"	22'-1"	21'-0"	19'-11"
	NI-90	23'-9"	21'-11"	20'-10"	19'-8"	24'-3"	22'-6"	21'-5"	20'-3"
16"	NI-60	23'-7"	21'-10"	20'-10"	19'-9"	24'-4"	22'-7"	21'-7"	20'-5"
	NI-80	25'-4"	23'-5"	22'-3"	21'-1"	26'-0"	24'-1"	22'-11"	21'-8"
	NI-90	25'-10"	23'-10"	22'-8"	21'-5"	26'-5"	24'-6"	23'-4"	22'-0"

Joist depth	Joist series	Mid-span blocking with 1x4 inch strap On centre spacing				Mid-span blocking and 1/2 in. gypsum ceiling On centre spacing			
		12"	16"	19.2"	24"	12"	16"	19.2"	24"
9-1/2"	NI-20	17'-1"	15'-5"	14'-6"	13'-5"	17'-1"	15'-5"	14'-6"	13'-5"
	NI-40x	18'-7"	17'-6"	16'-7"	14'-11"	19'-1"	17'-8"	16'-7"	14'-11"
	NI-60	18'-10"	17'-7"	16'-10"	15'-7"	19'-4"	18'-0"	16'-10"	15'-7"
	NI-80	20'-2"	18'-9"	17'-11"	17'-2"	20'-7"	19'-2"	18'-3"	17'-5"
11-7/8"	NI-20	20'-3"	18'-8"	17'-6"	16'-1"	20'-7"	18'-8"	17'-6"	16'-1"
	NI-40x	21'-9"	20'-3"	19'-0"	17'-0"	22'-4"	20'-10"	19'-0"	17'-0"
	NI-60	22'-0"	20'-6"	19'-7"	18'-7"	22'-7"	21'-1"	20'-2"	18'-8"
	NI-80	23'-6"	21'-10"	20'-10"	19'-9"	24'-0"	22'-5"	21'-4"	20'-3"
	NI-90	24'-0"	22'-4"	21'-3"	20'-1"	24'-6"	22'-10"	21'-9"	20'-7"
14"	NI-40x	24'-4"	22'-8"	20'-11"	18'-8"	25'-0"	22'-11"	20'-11"	18'-8"
	NI-60	24'-9"	23'-0"	22'-0"	20'-9"	25'-5"	23'-9"	22'-8"	21'-4"
	NI-80	26'-5"	24'-6"	23'-4"	22'-1"	27'-0"	25'-2"	24'-0"	22'-8"
	NI-90	26'-11"	25'-0"	23'-10"	22'-6"	27'-5"	25'-7"	24'-5"	23'-1"
16"	NI-60	27'-2"	25'-4"	24'-2"	22'-10"	27'-11"	26'-1"	24'-11"	23'-1"
	NI-80	29'-0"	26'-11"	25'-8"	24'-3"	29'-7"	27'-7"	26'-4"	24'-11"
	NI-90	29'-6"	27'-5"	26'-1"	24'-8"	30'-1"	28'-1"	26'-9"	25'-4"

### Notes:

1. The tabulated clear spans are based on CSA O86-14 and NBC 2015, and are applicable to residential floor construction meeting the above design criteria.
2. For multiple-span applications, the end spans shall be 40% or more of the adjacent span.
3. Minimum bearing length shall be 1-3/4 inch for end bearings, and 3-1/2 inches for intermediate bearings.
4. Bearing stiffeners are not required when I-joists are used in accordance with this table, except as required for hangers.
5. Nordic I-joists are listed in CCMC Evaluation Report 13032-R and APA Product Report PR-L274C.

The construction details for residential designs are prone to changes.

Details released after April 2014 supersedes N-C301

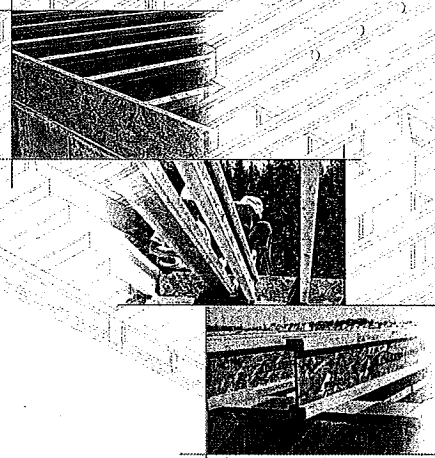
Installation must comply with latest documentation on I-Joist and other Nordic products from the <http://nordic.ca/>

This document does not constitute a record of the structural integrity of the building nor suitability of the design assumptions made. Nordic Structures is responsible only for the structural adequacy of its component based on the design criteria and loadings shown on the calculation sheets.

(Nordic Request 1810-095)

# NORDIC ENGINEERED WOOD

## INSTALLATION GUIDE FOR RESIDENTIAL FLOORS



Distributed by:



### SAFETY AND CONSTRUCTION PRECAUTIONS



Do not walk on I-joists until fully fastened and braced, or serious injuries can result.



Never stack building materials over unfastened I-joists. Once sheathed, do not over-stress I-joist with concentrated loads from building materials.

#### WARNING

I-joists are not stable until completely installed, and will not carry any load until fully braced and sheathed.

#### Avoid Accidents by Following these Important Guidelines:

1. Brace and nail each I-joist as it is installed, using hangers, blocking panels, rim board, and/or cross-bridging at joist ends. When I-joists are applied continuously over interior supports and a load-bearing wall is planned at that location, blocking will be required at the interior support.
2. When the building is completed, the floor sheathing will provide lateral support for the top flanges of the I-joists. Until this sheathing is applied, temporary bracing, often called struts, or temporary sheathing must be applied to prevent I-joist rollover or buckling.
  - Temporary bracing or struts must be 1x4 inch minimum, at least 8 feet long and spaced no more than 8 feet on centre, and must be secured with a minimum of two 2-1/2" nails fastened to the top surface of each I-joist. Nail the bracing to a lateral restraint at the end of each bay. Lap ends of adjoining bracing over at least two I-joists.
  - Or, sheathing (temporary or permanent) can be nailed to the top flanges of the first 4 feet of I-joists at the end of the bay.
3. For cantilevered I-joists, brace top and bottom flanges, and brace ends with closure panels, rim board, or cross-bridging.
4. Install and fully nail permanent sheathing to each I-joist before placing loads on the floor system. Then, stack building materials over beams or walls only.
5. Never install a damaged I-joist.

Improper storage or installation, failure to follow applicable building codes, failure to follow span ratings for Nordic I-joists, failure to follow allowable hole sizes and locations, or failure to use web stiffeners when required can result in serious accidents. Follow these installation guidelines carefully.

### STORAGE AND HANDLING GUIDELINES

1. Bundle wrap can be slippery when wet. Avoid walking on wrapped bundles.
2. Store, stack, and handle I-joists vertically and level only.
3. Always stack and handle I-joists in the upright position only.
4. Do not store I-joists in direct contact with the ground and/or flammable.
5. Protect I-joists from weather, and use spacers to separate bundles.
6. Bundled units should be kept intact until time of installation.
  - Pick I-joists in bundles as shipped by the supplier.
  - Orient the bundles so that the webs of the I-joists are vertical.
  - Pick the bundles at the 5th points, using a spreader bar if necessary.
8. Do not handle I-joists in a horizontal orientation.
9. NEVER USE OR TRY TO REPAIR A DAMAGED I-JOIST.

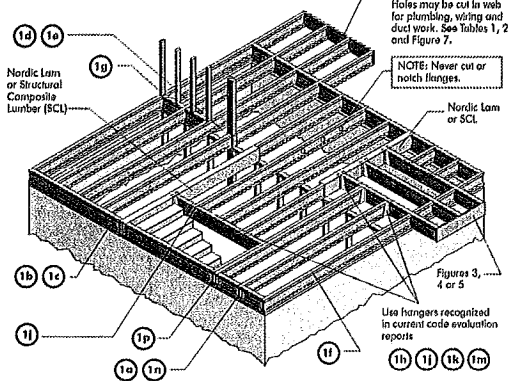


### INSTALLING NORDIC I-JOISTS

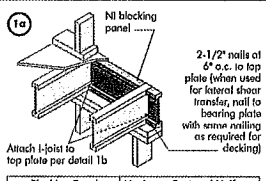
1. Before laying out floor system components, verify that I-joist flange widths match hanger widths. If not, contact your supplier.
2. Except for cutting to length, I-joist flanges should never be cut, drilled, or notched.
3. Install I-joists so that top and bottom flanges are within 1/2 inch of true vertical alignment.
4. I-joists must be anchored securely to supports before floor sheathing is attached, and supports for multiple-span joists must be level.
5. Minimum bearing lengths: 1-3/4 inches for end bearings and 3-1/2 inches for intermediate bearings.
6. When using hangers, seat I-joists firmly in hanger bottoms to minimize settlement.
7. Leave a 1/16-inch gap between the I-joist end and a header.
8. Concentrated loads greater than those that can normally be expected in residential construction should only be applied to the top surface of the top flange. Normal concentrated loads include track lighting fixtures, audio equipment and security cameras. Never suspend unbraced or heavy loads from the I-joist's bottom flange. Whenever possible, suspend all concentrated loads from the top of the I-joist. Or, attach the load to blocking that has been securely fastened to the I-joist webs.
9. Never install I-joists where they will be permanently exposed to weather, or where they will remain in direct contact with concrete or masonry.
10. Restrain ends of floor joists to prevent rollover. Use rim board, rim joists or I-joist blocking panels.
11. For I-joists installed over and beneath bearing walls, use full depth blocking panels, rim board, or squash blocks (cripple members) to transfer gravity loads through the floor system to the wall or foundation below.
12. Due to shrinkage, common framing lumber set on edge may never be used as blocking or rim boards. I-joist blocking panels or other engineered wood products – such as rim board – must be cut to fit between the I-joists, and an I-joist-compatible depth selected.
13. Provide permanent lateral support of the bottom flange of all I-joists at interior supports of multiple-span joists. Similarly, support the bottom flange of all cantilevered I-joists at the end support next to the cantilever extension. In the completed structure, the gypsum wallboard ceiling provides this lateral support. Until the final finished ceiling is applied, temporary bracing or struts must be used.
14. If square-edge panels are used, edges must be supported between I-joists with 2x4 blocking. Glue panels to blocking to minimize squeaks. Blocking is not required under structural finish flooring, such as wood strip flooring, or if a separate underlayment layer is installed.
15. Nail spacing: Space nails installed to the flange's top face in accordance with the applicable building code requirements or approved building plans.

FIGURE 1  
TYPICAL NORDIC I-JOIST FLOOR FRAMING AND CONSTRUCTION DETAILS

Some framing requirements such as erection bracing and blocking panels have been omitted for clarity.

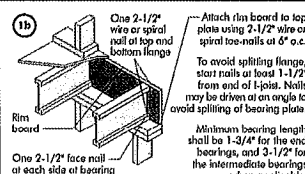


All nails shown in the above details are assumed to be common wire nails unless otherwise noted. 3" (0.125" dia.) common spiral nails may be substituted for 2-1/2" (0.120" dia.) common wire nails. Framing lumber assumed to be Spruce-Pine-Fir No. 2 or better. Individual components not shown to scale for clarity.



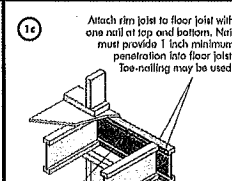
Blocking Panel or Rim Joist	Maximum Factored Uniform Vertical Load* (plf)
NI Joists	3,300

\*The uniform vertical load is limited to a joist depth of 16 inches or less and is based on standard term load duration. It shall not be used in the design of a bending member, such as joist, header, or rafter. For concentrated vertical load transfer, see detail 1d.



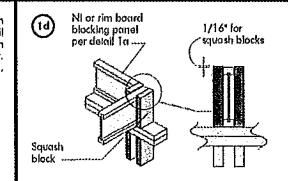
Blocking Panel or Rim Joist	Maximum Factored Uniform Vertical Load* (plf)
1-1/8" Rim Board Plus	8,090

\*The uniform vertical load is limited to a rim board depth of 16 inches or less and is based on standard term load duration. It shall not be used in the design of a bending member, such as joist, header, or rafter. For concentrated vertical load transfer, see detail 1d.



Blocking Panel or Rim Joist	Maximum Factored Uniform Vertical Load* (plf)
NI Joists	3,300

\*The uniform vertical load is limited to a joist depth of 16 inches or less and is based on standard term load duration. It shall not be used in the design of a bending member, such as joist, header, or rafter. For concentrated vertical load transfer, see detail 1d.



Pair of Squash Blocks	Maximum Factored Uniform Vertical Load* (plf)
2x Lumber	5,500
1-1/8" Rim Board Plus	4,300

\*The uniform vertical load is limited to a joist depth of 16 inches or less and is based on standard term load duration. It shall not be used in the design of a bending member, such as joist, header, or rafter. For concentrated vertical load transfer, see detail 1d.

The construction details for residential designs are prone to changes.

Details released after April 2014 supersedes N-C301

Installation must comply with latest documentation on I-Joist and other Nordic products from the <http://nordic.ca/>

This document does not constitute a record of the structural integrity of the building nor suitability of the design assumptions made. Nordic Structures is responsible only for the structural adequacy of its component based on the design criteria and loadings shown on the calculation sheets.

## MAXIMUM FLOOR SPANS

- Maximum clear spans applicable to single-span or multiple-span residential floor construction with a design live load of 40 psf and dead load of 15 psf. The ultimate limit states are based on the factored loads of 1.35L + 1.25D. The serviceability limit states include the consideration for floor vibration and a live load deflection limit of L/480. For multiple-span applications, the end spans shall be 40% or more of the adjacent span.
- Spans are based on a composite floor with glued-nailed oriented strand board (OSB) sheathing with a minimum thickness of 5/8 inch for a joist spacing of 19.2 inches or less, or 3/4 inch for joist spacing of 24 inches. Adhesive shall meet the requirements given in C085-71.26 Standard. No concrete topping or bridging element was assumed. Increased spans may be achieved with the use of gypsum and/or a row of blocking at mid-span.
- Minimum bearing length shall be 1-3/4 inches for the end bearings, and 3-1/2 inches for the intermediate bearings.
- Bearing stiffeners are not required when I-joists are used with the spans and spacings given in this table, except as required for hangers.
- This span chart is based on uniform loads. For applications with other than uniform loads, an engineering analysis may be required based on the use of the design properties.
- Tables are based on Unit States Design per CAN/CSA C085-07 Standard, and NBC 2010.
- SI units conversion: 1 inch = 25.4 mm  
1 foot = 0.305 m

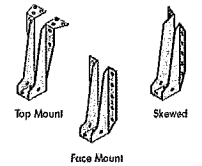
## MAXIMUM FLOOR SPANS FOR NORDIC I-JOISTS SIMPLE AND MULTIPLE SPANS

Joist Depth	Joist Series	Simple spans				Multiple spans			
		On centre spacing				On centre spacing			
		12"	15"	19.2"	24"	12"	15"	19.2"	24"
9-1/2"	Ni-20	15'-1"	14'-2"	13'-9"	12'-5"	14'-3"	13'-4"	13'-0"	11'-7"
	Ni-40x	16'-1"	15'-2"	14'-8"	14'-9"	17'-5"	16'-5"	15'-0"	14'-5"
	Ni-60	16'-3"	15'-4"	14'-10"	14'-11"	17'-7"	16'-7"	16'-0"	15'-6"
	Ni-80	17'-1"	16'-1"	15'-4"	15'-7"	18'-7"	17'-4"	16'-9"	17'-2"
11-7/8"	Ni-20	16'-11"	16'-0"	15'-5"	15'-4"	18'-4"	17'-3"	16'-8"	16'-7"
	Ni-40x	18'-1"	17'-0"	16'-5"	16'-8"	20'-0"	18'-9"	17'-9"	17'-7"
	Ni-60	18'-4"	17'-3"	16'-7"	16'-9"	20'-3"	19'-0"	18'-0"	18'-9"
	Ni-80	19'-6"	18'-0"	17'-4"	17'-5"	21'-6"	19'-11"	19'-0"	19'-8"
14"	Ni-20	19'-9"	18'-3"	17'-4"	17'-7"	21'-9"	20'-2"	19'-3"	19'-11"
	Ni-40x	20'-2"	18'-7"	17'-10"	17'-11"	22'-3"	20'-7"	19'-8"	19'-9"
	Ni-60	20'-4"	18'-9"	17'-11"	18'-0"	22'-5"	20'-9"	19'-10"	20'-5"
	Ni-80	21'-1"	19'-1"	18'-1"	18'-2"	22'-7"	20'-11"	20'-10"	20'-10"
16"	Ni-20	20'-5"	18'-11"	18'-1"	18'-2"	22'-7"	20'-11"	20'-10"	20'-10"
	Ni-40x	21'-7"	20'-0"	19'-1"	19'-2"	23'-10"	22'-1"	21'-1"	21'-10"
	Ni-60	21'-11"	20'-3"	19'-4"	19'-5"	24'-3"	22'-5"	21'-5"	22'-2"
	Ni-80	22'-3"	20'-8"	19'-9"	19'-9"	24'-9"	22'-10"	21'-10"	21'-10"

CCMC EVALUATION REPORT 13032-R

## I-JOIST HANGERS

- Hangers shown illustrate the three most commonly used metal hangers to support I-joists.
- All nailing must meet the hanger manufacturer's recommendations.
- Hangers should be selected based on the joist depth, flange width and load capacity based on the maximum spans.
- Web stiffeners are required when the sides of the hangers do not laterally brace the top flange of the I-joist.



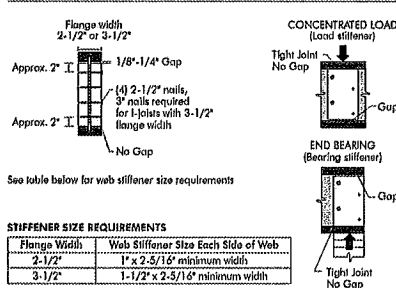
## WEB STIFFENERS

### RECOMMENDATIONS:

- A bearing stiffener is required in all engineered applications with factored reactions greater than shown in the I-joist properties table found in the I-joist Construction Guide (C101). The gap between the stiffener and the flange is at the top.
- A bearing stiffener is required when the I-joist is supported in a hanger and the sides of the hanger do not extend up to, and support, the top flange. The gap between the stiffener and flange is at the top.
- A load stiffener is required at locations where a factored concentrated load greater than 2,370 lbs is applied to the top flange between supports, or in the case of a cantilever, anywhere between the cantilever tip and the support. These values are for standard term load duration, and may be adjusted for other load durations as permitted by the code. The gap between the stiffener and the flange is at the bottom.

SI units conversion: 1 inch = 25.4 mm

FIGURE 2  
WEB STIFFENER INSTALLATION DETAILS



### STIFFENER SIZE REQUIREMENTS

Flange Width	Web Stiffener Size Each Side of Web
2-1/2"	1" x 2-5/16" minimum width
3-1/2"	1-1/2" x 2-5/16" minimum width

## NORDIC I-JOIST SERIES

Series	Depth	Flange Width	Web Thickness	Minimum Depth
Ni-20	9-1/2"	2-1/2"	1/2"	5-1/2"
Ni-40x	11-7/8"	3-1/2"	1/2"	7-1/4"
Ni-60	14"	3-1/2"	1/2"	7-1/4"
Ni-80	16"	3-1/2"	1/2"	7-1/4"
Ni-90x	18"	3-1/2"	1/2"	7-1/4"
Ni-100x	20"	3-1/2"	1/2"	7-1/4"

Chantiers Chibougon Ltd. harvests its own trees, which enables Nordic products to adhere to strict quality control procedures throughout the manufacturing process. Every phase of the operation, from forest to the finished product, reflects our commitment to quality.

Nordic Engineered Wood I-Joists use only finger-jointed black spruce lumber in their flanges, ensuring consistent quality, superior strength, and longer span carrying capacity.

(Nordic Request 1810-095)



**1a** Transfer load from above to bearing below. Install squish blocks per detail 1d. Match bearing area of blocks below to peak above.

**1b** Use single I-joist for loads up to 3,300 plf, double I-joists for loads up to 6,600 plf (filler block not required). Attach I-joist to top plate using 2-1/2" o.c. at 6" o.c.

**1c** Load bearing wall above shall align vertically with the bearing below. Other conditions, such as offset bearing walls, are not covered by this detail.

**1d** Backer block (use if longer load exceeds 360 lbs) Before installing a backer block to a double I-joist, drive three additional 3" nails through the webs and filler block where the backer block will fit. Clinch. Install backer right to top flange. Use twelve 3" nails, clinched when possible. Maximum factored resistance for hanger for this detail = 1,620 lbs.

**1e** Double I-joist header

**1f** Top- or face-mount hanger

**1g** Filler block per detail 1p

**1h** Backer block required (both sides for face-mount hangers)

**1i** For hanger capacity see hanger manufacturer's recommendations. Verify double I-joist capacity to support concentrated loads.

**1j** BACKER BLOCKS (Blocks must be long enough to permit required nailing without spilling)

Flange Width	Material Thickness Required*	Minimum Depth**
2-1/2"	1"	5-1/2"
3-1/2"	1-1/2"	7-1/4"

\* Minimum grade for backer block material shall be S-P-F No. 2 or better for solid sawn lumber and wood structural panels conforming to CAN/CSA-C0325 or CAN/CSA-C0437 Standard.

\*\* For face-mount hangers use nail joist depth minus 3-1/4" for joists with 1-1/2" thick flanges. For 2" thick flanges use nail depth minus 4-1/4".

**1k** Nordic Lumber or SCL

**1l** Top- or face-mount hanger installed per manufacturer's recommendations

**1m** Top-mount hanger installed per manufacturer's recommendations

**1n** Multiple I-joist header with full depth filler block shown. Nordic Lumber or SCL headers may also be used. Vary double I-joist capacity to support concentrated loads.

**1o** Do not bowl-cut joist beyond inside face of wall

**1p** Filler block requirements for DOUBLE I-JOIST CONSTRUCTION

Flange Size	Joist Depth	Filler Block Size
9-1/2"	2-1/2" x 8"	3" x 6"
11-7/8"	2-1/2" x 8"	3" x 8"
14"	2-1/2" x 10"	3" x 10"
16"	2-1/2" x 12"	3" x 12"
9-1/2"	3" x 6"	3" x 6"
11-7/8"	3" x 8"	3" x 8"
14"	3" x 10"	3" x 10"
16"	3" x 12"	3" x 12"
9-1/2"	3" x 7"	3" x 7"
11-7/8"	3" x 9"	3" x 9"
14"	3" x 11"	3" x 11"

**1r** Lumber 2x4 min., extend block to face of adjacent web. Two 2-1/2" spigot nails from each web to lumber piece, alternate on opposite side.

**1s** One 2-1/2" nails at top and bottom flange. Two 2-1/2" nails from each web to lumber piece. 2x4 min. (1/8" gap minimum). Two 2-1/2" nails from each web to lumber piece. One 2-1/2" nails one side only. 2-1/2" nails at 6" o.c.

**1t** Notes: In some local codes, blocking is prescriptively required in the first joist space (or first and second joist space) next to the starter joist. Where required, see local code requirements for spacing of the blocking. All nails are common spiral in this detail.

The construction details for residential designs are prone to changes.

Details released after April 2014 supersedes N-C301

Installation must comply with latest documentation on I-Joist and other Nordic products from the <http://nordic.ca/>

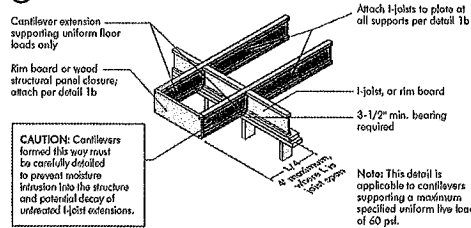
This document does not constitute a record of the structural integrity of the building nor suitability of the design assumptions made. Nordic Structures is responsible only for the structural adequacy of its component based on the design criteria and loadings shown on the calculation sheets.

(Nordic Request 1810-095)

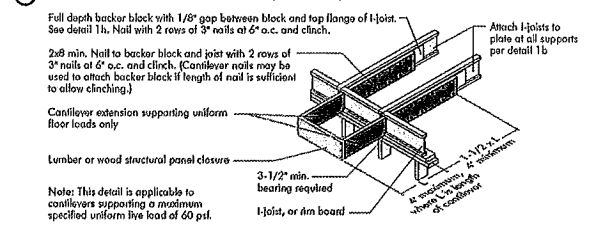


### CANTILEVER DETAILS FOR BALCONIES (NO WALL LOAD)

#### 3a I-JOIST CANTILEVER DETAIL FOR BALCONIES (No Wall Load)

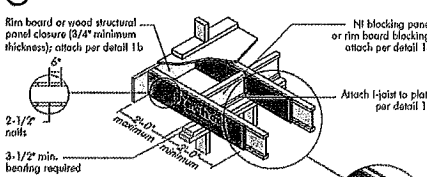


#### 3b LUMBER CANTILEVER DETAIL FOR BALCONIES (No Wall Load)



### CANTILEVER DETAILS FOR VERTICAL BUILDING OFFSET (CONCENTRATED WALL LOAD)

#### 4a Method 1 — SHEATHING REINFORCEMENT ONE SIDE

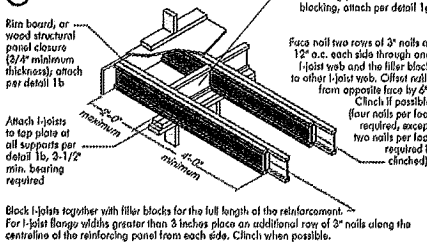


#### Method 2 — SHEATHING REINFORCEMENT TWO SIDES

- Use same installation as Method 1 but reinforce both sides of I-joist with sheathing.
- Use nailing pattern shown for Method 1 with opposite face nailing offset by 9\"/>

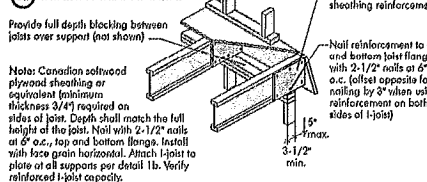
Note: Canadian softwood plywood sheathing or equivalent (minimum thickness 3/4\"/>

#### 4b Alternate Method 2 — DOUBLE I-JOIST

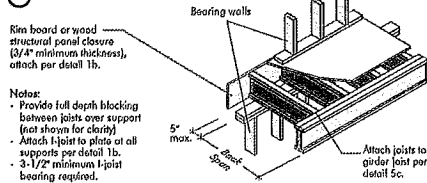


### BRICK CANTILEVER DETAILS FOR VERTICAL BUILDING OFFSET (CONCENTRATED WALL LOAD)

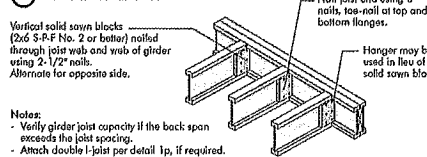
#### 5a SHEATHING REINFORCEMENT



#### 5b SET-BACK DETAIL



#### 5c SET-BACK CONNECTION



#### FIGURE 4 (continued)



#### CANTILEVER REINFORCEMENT METHODS ALLOWED

Joint Depth (in.)	Roof Truss Span (ft)	ROOF LOADING (UNFACTORED)							
		LL = 30 psf, DL = 15 psf				LL = 40 psf, DL = 15 psf			
		Joint Spacing (in.)				Joint Spacing (in.)			
		12	16	19.2	24	12	16	19.2	24
9-1/2	26	N	N	1	2	N	1	2	X
	28	N	N	1	X	N	1	2	X
	30	N	1	1	X	N	1	2	X
	32	N	1	2	X	N	2	X	X
	34	N	1	2	X	N	2	X	X
11-7/8	26	N	N	1	2	N	1	2	X
	28	N	N	1	2	N	1	2	X
	30	N	1	1	2	N	1	2	X
	32	N	1	2	X	N	2	X	X
	34	N	1	2	X	N	2	X	X
14	26	N	N	N	N	N	N	N	N
	28	N	N	N	N	N	N	N	N
	30	N	N	N	N	N	N	N	N
	32	N	N	N	N	N	N	N	N
	34	N	N	N	N	N	N	N	N
16	26	N	N	N	N	N	N	N	N
	28	N	N	N	N	N	N	N	N
	30	N	N	N	N	N	N	N	N
	32	N	N	N	N	N	N	N	N
	34	N	N	N	N	N	N	N	N

- N = No reinforcement required.
- 1 = N1 reinforced with 3/4\"/>

#### FIGURE 5 (continued)



#### BRICK CANTILEVER REINFORCEMENT METHODS ALLOWED

Joint Depth (in.)	Roof Truss Span (ft)	ROOF LOADING (UNFACTORED)							
		LL = 30 psf, DL = 15 psf				LL = 40 psf, DL = 15 psf			
		Joint Spacing (in.)				Joint Spacing (in.)			
		12	16	19.2	24	12	16	19.2	24
9-1/2	26	1	X	X	X	2	X	X	X
	28	1	X	X	X	2	X	X	X
	30	1	X	X	X	2	X	X	X
	32	2	X	X	X	2	X	X	X
	34	2	X	X	X	2	X	X	X
11-7/8	26	1	2	X	X	1	X	X	X
	28	1	2	X	X	1	X	X	X
	30	1	2	X	X	1	X	X	X
	32	1	2	X	X	1	X	X	X
	34	1	2	X	X	1	X	X	X
14	26	1	2	X	X	1	2	X	X
	28	1	2	X	X	1	2	X	X
	30	1	2	X	X	1	2	X	X
	32	1	2	X	X	1	2	X	X
	34	1	2	X	X	1	2	X	X
16	26	1	2	X	X	1	2	X	X
	28	1	2	X	X	1	2	X	X
	30	1	2	X	X	1	2	X	X
	32	1	2	X	X	1	2	X	X
	34	1	2	X	X	1	2	X	X

- N = No reinforcement required.
- 1 = N1 reinforced with 3/4\"/>



The construction details for residential designs are prone to changes.

Details released after April 2014 supersedes N-C301

Installation must comply with latest documentation on I-Joist and other Nordic products from the <http://nordic.ca/>

This document does not constitute a record of the structural integrity of the building nor suitability of the design assumptions made. Nordic Structures is responsible only for the structural adequacy of its component based on the design criteria and loadings shown on the calculation sheets.

## WEB HOLES

### RULES FOR CUTTING HOLES AND DUCT CHASE OPENINGS:

- The distance between the inside edge of the support and the centreline of any hole or duct chase opening shall be in compliance with the requirements of Table 1 or 2, respectively.
- I-Joist top and bottom flanges must NEVER be cut, notched, or otherwise modified.
- Whenever possible, field-cut holes should be centred on the middle of the web.
- The maximum size hole or the maximum depth of a duct chase opening that can be cut into an I-Joist web shall equal the clear distance between the flanges of the I-Joist minus 1/4 inch. A minimum of 1/8 inch shall always be maintained between the top or bottom of the hole or opening and the adjacent I-Joist flange.
- The sides of square holes or longest sides of rectangular holes should not exceed 3/4 of the diameter of the maximum round hole permitted at that location.
- Where more than one hole is necessary, the distance between adjacent hole edges shall exceed twice the diameter of the largest round hole or twice the size of the largest square hole (or twice the length of the longest side of the longest rectangular hole or duct chase opening) and each hole and duct chase opening shall be sized and located in compliance with the requirements of Tables 1 and 2, respectively.
- A knockout is not considered a hole, may be utilized anywhere it occurs, and may be ignored for purposes of calculating minimum distances between holes and/or duct chase openings.
- Holes measuring 1-1/2 inches or smaller shall be permitted anywhere in a confined section of a joist. Holes of greater size may be permitted subject to verification.
- A 1-1/2 inch hole or smaller can be placed anywhere in the web provided that it meets the requirements of rule number 6 above.
- All holes and duct chase openings shall be cut in a workman-like manner in accordance with the restrictions listed above and as illustrated in Figure 7.
- Limit three maximum size holes per span, of which one may be a duct chase opening.
- A group of round holes at approximately the same location shall be permitted if they meet the requirements for a single round hole circumscribed around them.

TABLE 1  
LOCATION OF CIRCULAR HOLES IN JOIST WEBS  
Simple or Multiple Span for Dead Loads up to 15 psf and Live Loads up to 40 psf

Joist Depth	Joist Series	Minimum distance from inside face of any support to centre of hole (8 in.)												Span adjustment factor
		2	3	4	5	6	7	8	9	10	11	12	13	
9-1/2"	N100	0.7	1.2	1.7	2.2	2.7	3.2	3.7	4.2	4.7	5.2	5.7	6.2	1.0
	N140	0.7	1.2	1.7	2.2	2.7	3.2	3.7	4.2	4.7	5.2	5.7	6.2	1.0
	N170	0.7	1.2	1.7	2.2	2.7	3.2	3.7	4.2	4.7	5.2	5.7	6.2	1.0
	N200	0.7	1.2	1.7	2.2	2.7	3.2	3.7	4.2	4.7	5.2	5.7	6.2	1.0
11-7/8"	N100	0.7	1.2	1.7	2.2	2.7	3.2	3.7	4.2	4.7	5.2	5.7	6.2	1.0
	N140	0.7	1.2	1.7	2.2	2.7	3.2	3.7	4.2	4.7	5.2	5.7	6.2	1.0
	N170	0.7	1.2	1.7	2.2	2.7	3.2	3.7	4.2	4.7	5.2	5.7	6.2	1.0
	N200	0.7	1.2	1.7	2.2	2.7	3.2	3.7	4.2	4.7	5.2	5.7	6.2	1.0
14"	N100	0.7	1.2	1.7	2.2	2.7	3.2	3.7	4.2	4.7	5.2	5.7	6.2	1.0
	N140	0.7	1.2	1.7	2.2	2.7	3.2	3.7	4.2	4.7	5.2	5.7	6.2	1.0
	N170	0.7	1.2	1.7	2.2	2.7	3.2	3.7	4.2	4.7	5.2	5.7	6.2	1.0
	N200	0.7	1.2	1.7	2.2	2.7	3.2	3.7	4.2	4.7	5.2	5.7	6.2	1.0
18"	N100	0.7	1.2	1.7	2.2	2.7	3.2	3.7	4.2	4.7	5.2	5.7	6.2	1.0
	N140	0.7	1.2	1.7	2.2	2.7	3.2	3.7	4.2	4.7	5.2	5.7	6.2	1.0
	N170	0.7	1.2	1.7	2.2	2.7	3.2	3.7	4.2	4.7	5.2	5.7	6.2	1.0
	N200	0.7	1.2	1.7	2.2	2.7	3.2	3.7	4.2	4.7	5.2	5.7	6.2	1.0

1. Above table may be used for I-Joist spacing of 24 inches on centre or less.  
2. Hole location distance is measured from inside face of support to centre of hole.  
3. Distances in this chart are based on uniformly loaded joists.

### OPTIONAL:

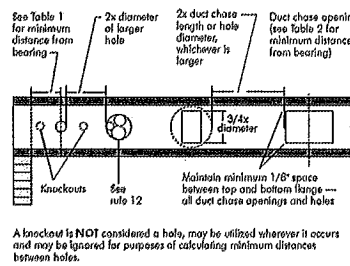
The above table is based on the I-Joist used at its maximum span. If the I-Joists are placed at less than their full maximum span (see Maximum Floor Span), the minimum distance from the centreline of the hole to the face of any support (D) as given above may be reduced as follows:

$$\text{Reduced } D = \frac{\text{Actual Span}}{\text{Maximum Span}} \times D$$

Where:

- Reduced = Distance from the inside face of any support to centre of hole, reduced for less than maximum span applications (D).
- Actual = The actual measured span distance between the inside faces of supports (S).
- Maximum = The maximum span distance between the inside faces of supports (S).
- Span Adjustment Factor given in this table.
- The minimum distance from the inside face of any support to centre of hole from this table.
- If Actual is greater than 1, use 1 in the above calculation for Actual.

FIGURE 7  
FIELD-CUT HOLE LOCATOR



Knockouts are predrilled holes provided for the contractor's convenience to install electrical or small plumbing lines. They are 1-1/2 inches in diameter, and are spaced 15 inches on centre along the length of the I-Joist. Where possible, it is preferable to use knockouts instead of field-cut holes.

Never drill, cut or notch the flange, or over-cut the web.

Holes in webs should be cut with a sharp saw.

TABLE 2  
DUCT CHASE OPENING SIZES AND LOCATIONS — Simple Span Only

Joist Depth	Joist Series	Minimum distance from inside face of any support to centre of opening (8 in.)												Span adjustment factor
		2	3	4	5	6	7	8	9	10	11	12	13	
9-1/2"	N100	0.7	1.2	1.7	2.2	2.7	3.2	3.7	4.2	4.7	5.2	5.7	6.2	1.0
	N140	0.7	1.2	1.7	2.2	2.7	3.2	3.7	4.2	4.7	5.2	5.7	6.2	1.0
	N170	0.7	1.2	1.7	2.2	2.7	3.2	3.7	4.2	4.7	5.2	5.7	6.2	1.0
	N200	0.7	1.2	1.7	2.2	2.7	3.2	3.7	4.2	4.7	5.2	5.7	6.2	1.0
11-7/8"	N100	0.7	1.2	1.7	2.2	2.7	3.2	3.7	4.2	4.7	5.2	5.7	6.2	1.0
	N140	0.7	1.2	1.7	2.2	2.7	3.2	3.7	4.2	4.7	5.2	5.7	6.2	1.0
	N170	0.7	1.2	1.7	2.2	2.7	3.2	3.7	4.2	4.7	5.2	5.7	6.2	1.0
	N200	0.7	1.2	1.7	2.2	2.7	3.2	3.7	4.2	4.7	5.2	5.7	6.2	1.0
14"	N100	0.7	1.2	1.7	2.2	2.7	3.2	3.7	4.2	4.7	5.2	5.7	6.2	1.0
	N140	0.7	1.2	1.7	2.2	2.7	3.2	3.7	4.2	4.7	5.2	5.7	6.2	1.0
	N170	0.7	1.2	1.7	2.2	2.7	3.2	3.7	4.2	4.7	5.2	5.7	6.2	1.0
	N200	0.7	1.2	1.7	2.2	2.7	3.2	3.7	4.2	4.7	5.2	5.7	6.2	1.0
18"	N100	0.7	1.2	1.7	2.2	2.7	3.2	3.7	4.2	4.7	5.2	5.7	6.2	1.0
	N140	0.7	1.2	1.7	2.2	2.7	3.2	3.7	4.2	4.7	5.2	5.7	6.2	1.0
	N170	0.7	1.2	1.7	2.2	2.7	3.2	3.7	4.2	4.7	5.2	5.7	6.2	1.0
	N200	0.7	1.2	1.7	2.2	2.7	3.2	3.7	4.2	4.7	5.2	5.7	6.2	1.0

1. Above table may be used for I-Joist spacing of 24 inches on centre or less.  
2. Duct chase opening location distance is measured from inside face of support to centre of opening.  
3. The above table is based on simple span joists only. For other applications, contact your local distributor.  
4. Distances are based on uniform loaded joist joists but must meet the span requirements for a design live load of 40 psf and dead load of 15 psf, and a live load deflection limit of L/400. For other applications, contact your local distributor.

## INSTALLING THE GLUED FLOOR SYSTEM

- Wipe any mud, dirt, water, or ice from I-Joist flanges before gluing.
- Snap a chalk line across the I-Joists four feet from the wall for panel edge alignment and as a boundary for spreading glue.
- Spread only enough glue to lay one or two panels at a time, or follow specific recommendations from the glue manufacturer.
- Lay the first panel with tongue side to the wall, and nail in place. This protects the tongue of the next panel from damage when tapped into place with a block and sledgehammer.
- Apply a continuous line of glue (about 1/4-inch diameter) to the top flange of a single I-Joist. Apply glue in a wavy pattern on wide areas, such as with double I-Joists.
- Apply two lines of glue on I-Joists where panel ends butt to assure proper gluing of each end.
- After the first row of panels is in place, spread glue in the groove of one or two panels at a time before laying the next row. Glue line may be continuous or spaced, but avoid squeeze-out by applying a thinner line (1/8 inch) than used on I-Joist flanges.
- Tap the second row of panels into place, using a block to protect groove edges.
- Stagger and joints in each succeeding row of panels. A 1/8-inch space between all end joints and 1/8 inch at all edges, including T&G edges, is recommended. (Use a spacer block or an 1/8" common nail to assure accurate and consistent spacing.)
- Complete all nailing of each panel before glue sets. Check the manufacturer's recommendations for cure time. (Warm weather accelerates glue setting.) Use 2" ring- or screw-shank nails for panels 3/4-inch thick or less, and 2-1/2" ring- or screw-shank nails for thicker panels. Space nails per the table below. Closer nail spacing may be required by some codes, or for diaphragm construction. The finished deck can be walked on right away and will carry construction loads without damage to the glue bond.

### FASTENERS FOR SHEATHING AND SUBFLOORING<sup>(1)</sup>

Maximum Joist Spacing (in.)	Minimum Panel Thickness (in.)	Nail Size and Type				Maximum Spacing of Fasteners	
		Common Wire or Spiral Nails	Ring Threaded Nails or Screws	Staples		Edges	Interior Supports
16	5/8	2"	1-3/4"	2"		6"	12"
20	5/8	2"	1-3/4"	2"		6"	12"
24	3/4	2"	1-3/4"	2"		6"	12"

- Fasteners of sheathing and subflooring shall conform to the above table.
- Staples shall not be less than 1/16-inch in diameter or thickness, with not less than a 3/8-inch crown driven with the crown parallel to framing.
- Flooring screws shall not be less than 1/8-inch in diameter.
- Special conditions may impose heavy traffic and concentrated loads that require construction in excess of the minimums shown.
- Use only adhesives conforming to CAN/CSB-71.26 Standard, Adhesives for Field-Gluing Plywood to Lumber Framing for Floor System, applied in accordance with the manufacturer's recommendations. If OSB panels with sealed surfaces and edges are to be used, use only solvent-based glues check with panel manufacturer.

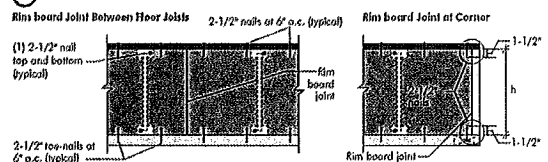
Ref.: NBC-CNBC, National Building Code of Canada 2010, Table 9.23.3.5.

### IMPORTANT NOTE:

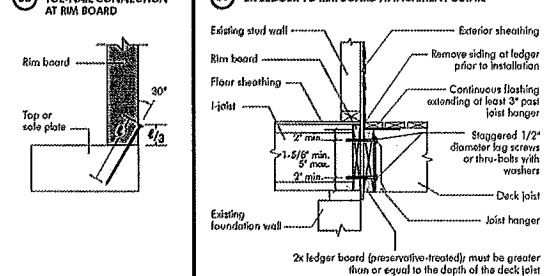
Floor sheathing must be field glued to the I-Joist flanges in order to achieve the maximum spans shown in this document. If sheathing is nailed only, I-Joist spans must be verified with your local distributor.

## RIM BOARD INSTALLATION DETAILS

### (a) ATTACHMENT DETAILS WHERE RIM BOARDS ABUT



### (b) TOE-NAIL CONNECTION AT RIM BOARD



## PRODUCT WARRANTY

Chattler Clivogren guarantees that, in accordance with our specifications, Nordic products are free from manufacturing defect in material and workmanship.

Furthermore, Chattler Clivogren warrants that our products, when utilized in accordance with our building and installation instructions, will meet or exceed our specifications for the lifetime of the structure.



## CONSTRUCTION DETAILS FOR RESIDENTIAL FLOORS

N-C303 / September 2013



Refer to the Installation Guide for Residential Floors for additional information.  
CCMC EVALUATION REPORT 13032-R

## WEB HOLE SPECIFICATIONS

RULES FOR CUTTING HOLES AND DUCT CHASE OPENINGS:

1. The distance between the inside edge of the support and the centreline of any hole or duct chase opening shall be in compliance with the requirements of Table 1 or 2, respectively.
2. I-joist top and bottom flanges must NEVER be cut, notched, or otherwise modified.
3. Whenever possible, field-cut holes should be centred on the middle of the web.
4. The maximum size hole or the maximum depth of a duct chase opening that can be cut into an I-joist web shall equal the clear distance between the flanges of the I-joist minus 1/4 inch. A minimum of 1/8 inch shall always be maintained between the top or bottom of the hole or opening and the adjacent I-joist flange.

5. The sides of square holes or longest sides of rectangular holes should not exceed 3/4 of the diameter of the maximum round hole permitted at that location.
6. Where more than one hole is necessary, the distance between adjacent hole edges shall exceed twice the diameter of the largest round hole or twice the size of the largest square hole (or twice the length of the longest side of the longest rectangular hole/duct chase opening) and each hole and duct chase opening shall be sized and located in compliance with the requirements of Tables 1 and 2, respectively.
7. A knockout is not considered a hole, may be utilized anywhere it occurs, and may be ignored for purposes of calculating minimum distances between holes and/or duct chase openings.
8. Holes measuring 1-1/2 inches or smaller are permitted anywhere in a cantilevered section of a joist. Holes of greater size may be permitted subject to verification.

9. A 1-1/2 inch hole or smaller can be placed anywhere in the web provided that it meets the requirements of rule number 6 above.
10. All holes and duct chase openings shall be cut in a workman-like manner in accordance with the restrictions listed above and as illustrated in Figure 7.
11. Limit three maximum size holes per span, of which one may be a duct chase opening.
12. A group of round holes of approximately the same location shall be permitted if they meet the requirements for a single round hole circumscribed around them.

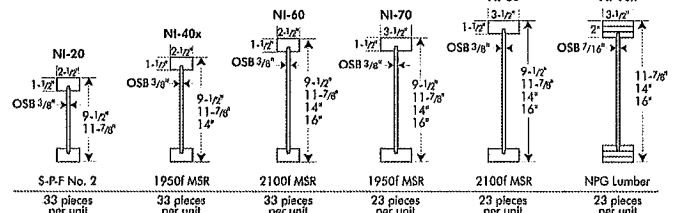


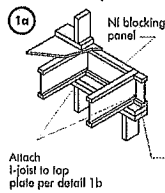
TABLE 1

## LOCATION OF CIRCULAR HOLES IN JOIST WEBS

Simple or Multiple Span for Dead Loads up to 15 psf and Live Loads up to 40 psf

Joist Depth	Joist Series	Minimum Distance from Inside Face of Any Support to Centre of Hole (ft - in.)														
		Round Hole Diameter (in.)														
		2	3	4	5	6	6-1/4	7	8	8-5/8	9	10	10-3/4	11	12	12-3/4
9-1/2"	NI-20	0-7"	1-6"	2-10"	4-3"	5-8"	6-0"	---	---	---	---	---	---	---	---	---
	NI-40	0-7"	1-6"	3-0"	4-4"	5-0"	6-4"	---	---	---	---	---	---	---	---	---
	NI-60	1-3"	2-6"	4-0"	5-4"	7-0"	7-5"	---	---	---	---	---	---	---	---	---
	NI-70	2-0"	3-4"	4-9"	6-3"	8-0"	8-4"	---	---	---	---	---	---	---	---	---
	NI-80	2-3"	3-6"	5-0"	6-6"	8-2"	8-8"	---	---	---	---	---	---	---	---	---
11-7/8"	NI-20	0-7"	0-8"	1-0"	2-4"	3-8"	4-0"	5-0"	6-6"	7-9"	---	---	---	---	---	---
	NI-40x	0-7"	0-8"	1-3"	2-8"	4-0"	4-4"	5-5"	7-0"	8-4"	---	---	---	---	---	---
	NI-60	0-7"	1-8"	3-0"	4-3"	5-9"	6-0"	7-3"	8-10"	10-0"	11-2"	---	---	---	---	---
	NI-70	1-3"	2-6"	4-0"	5-4"	6-9"	7-2"	8-4"	10-0"	11-2"	---	---	---	---	---	---
	NI-80	1-6"	2-10"	4-2"	5-6"	7-0"	7-5"	8-6"	10-3"	11-4"	---	---	---	---	---	---
14"	NI-90x	0-7"	0-8"	0-9"	2-5"	4-4"	4-9"	6-3"	---	---	---	---	---	---	---	---
	NI-40x	0-7"	0-8"	0-8"	1-0"	2-4"	2-9"	3-9"	5-2"	6-0"	6-6"	8-3"	10-2"	---	---	---
	NI-60	0-7"	0-8"	1-8"	3-0"	4-3"	4-8"	5-8"	7-2"	8-0"	8-8"	10-4"	11-9"	---	---	---
	NI-70	0-8"	1-10"	3-0"	4-5"	5-10"	6-2"	7-3"	8-9"	9-9"	10-4"	12-0"	13-5"	---	---	---
	NI-80	0-10"	2-0"	3-4"	4-9"	6-2"	6-5"	7-6"	9-0"	10-0"	10-8"	12-4"	13-9"	---	---	---
16"	NI-90x	0-7"	0-8"	0-8"	2-0"	3-9"	4-2"	5-5"	7-3"	8-5"	9-2"	---	---	---	---	---
	NI-60	0-7"	0-8"	0-8"	1-6"	2-10"	3-2"	4-2"	6-4"	7-0"	8-0"	8-5"	9-8"	10-2"	12-2"	13-9"
	NI-70	0-7"	1-0"	2-3"	3-6"	4-10"	5-3"	6-3"	7-8"	8-6"	9-2"	10-8"	12-0"	12-4"	14-0"	15-6"
	NI-80	1-3"	2-6"	4-0"	5-4"	6-9"	7-0"	8-4"	9-10"	10-0"	10-8"	12-4"	13-9"	14-5"	16-0"	---
	NI-90x	0-7"	0-8"	0-9"	2-0"	3-9"	4-2"	5-0"	6-9"	7-2"	8-4"	10-2"	11-6"	12-0"	---	---

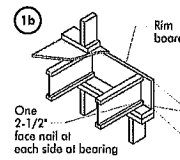




Blocking Panel or Rim Joist	Maximum Factored Uniform Vertical Load* (plf)
NI Joists	3,300

\*The uniform vertical load is limited to a joist depth of 16 inches or less and is based on standard term load duration. It shall not be used in the design of a bending member, such as joist, header, or rafter. For concentrated vertical load transfer, see detail 1d.

2-1/2" nails at 6" o.c. to top plate (when used for lateral shear transfer, nail to bearing plate with same nailing as required for decking)



Blocking Panel or Rim Joist	Maximum Factored Uniform Vertical Load* (plf)
1-1/8" Rim Board Plus	8,090

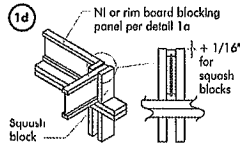
\*The uniform vertical load is limited to a rim board depth of 16 inches or less and is based on standard term load duration. It shall not be used in the design of a bending member, such as joist, header, or rafter. For concentrated vertical load transfer, see detail 1d.

One 2-1/2" wire or spiral nail at top and bottom flange

Attach rim board to top plate using 2-1/2" wire or spiral toe-nails at 6" o.c.

To avoid splitting flange, start nails at least 1-1/2" from end of I-joist. Nails may be driven at an angle to avoid splitting of bearing plate.

Minimum bearing length shall be 1-3/4" for the end bearings, and 3-1/2" for the intermediate bearings when applicable.

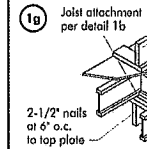
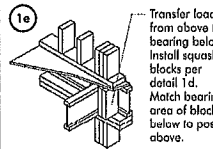


Pair of Squash Blocks	Maximum Factored Vertical Load per Pair of Squash Blocks (lbs)
2x Lumber	5,500
1-1/8" Rim Board Plus	8,500

3-1/2" wide  
5-1/2" wide

4,300  
6,600

Provide lateral bracing per detail 1a or 1b



Load bearing wall above shall align vertically with the bearing below. Other conditions, such as offset bearing walls, are not covered by this detail.

Blocking required over all interior supports under load-bearing walls or when floor joists are not continuous over support

NI blocking panel per detail 1a

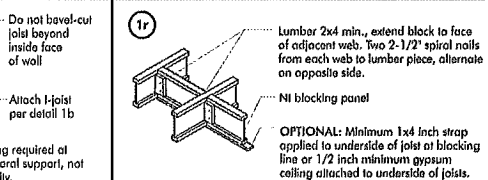
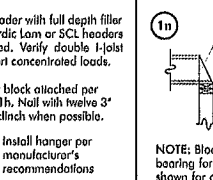
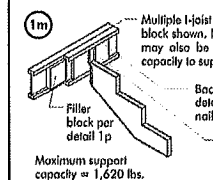
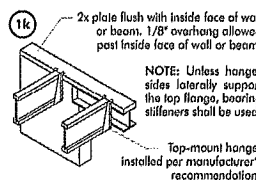
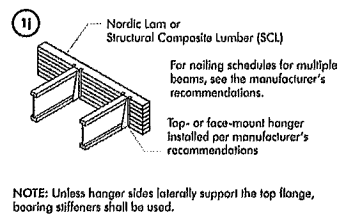
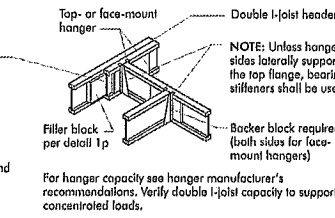
1h Backer block (use if hanger load exceeds 340 lbs). Before installing a backer block to a double I-joist, drive three additional 3" nails through the web and filler block where the backer block will fit. Clinch. Install backer tight to top flange. Use twelve 3" nails, clinched when possible. Maximum factored resistance for hanger for this detail = 1,620 lbs.

BACKER BLOCKS (Blocks must be long enough to permit required nailing without splitting)

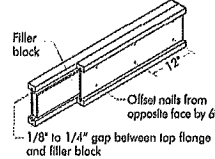
Flange Width	Material Thickness Required*	Minimum Depth**
2-1/2"	1"	5-1/2"
3-1/2"	1-1/2"	7-1/4"

\* Minimum grade for backer block material shall be S-P-F No. 2 or better for solid sawn lumber and wood structural panels conforming to CAN/CSA-O325 or CAN/CSA-O437 Standard.

\*\* For face-mount hangers use net joist depth minus 3-1/4" for joists with 1-1/2" thick flanges. For 2" thick flanges use net depth minus 4-1/4".

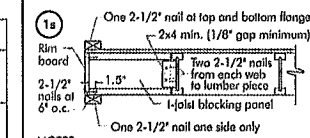


#### 1p FILLER BLOCK REQUIREMENTS FOR DOUBLE I-JOIST CONSTRUCTION



- NOTES:
- Support back of I-joist web during nailing to prevent damage to web/flange connection.
  - Leave a 1/8 to 1/4-inch gap between top of filler block and bottom of top I-joist flange.
  - Filler block is required for joists for full length of span.
  - Nail joists together with two rows of 3" nails at 12 inches o.c. (clinched when possible) on each side of the double I-joist. Total of four nails per foot required. If nails can be clinched, only two nails per foot are required.
  - The maximum factored load that may be applied to one side of the double joist using this detail is 860 lb/ft. Verify double I-joist capacity.

Flange Size	Net Depth	Filler Block Size
2-1/2" x 1-1/2"	9-1/2" 11-7/8" 14" 16"	2-1/8" x 6" 2-1/8" x 8" 2-1/8" x 10" 2-1/8" x 12"
3-1/2" x 1-1/2"	9-1/2" 11-7/8" 14" 16"	3" x 6" 3" x 8" 3" x 10" 3" x 12"
3-1/2" x 2"	11-7/8" 14" 16"	3" x 7" 3" x 9" 3" x 11"



NOTES:

- In some local codes, blocking is prescriptively required in the first joist space (or first and second joist space) next to the starter joist. Where required, see local code requirements for spacing of the blocking.
- All nails are common spiral in this detail.

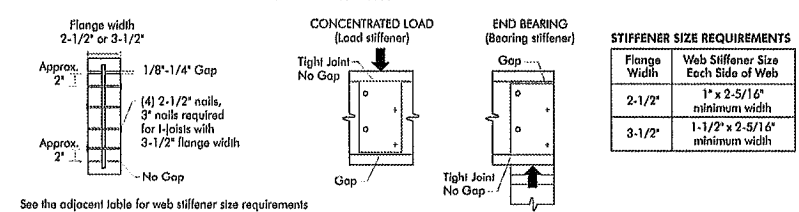
All nails shown in the above details are assumed to be common wire nails unless otherwise noted. 3" (0.125" dia.) common spiral nails may be substituted for 2-1/2" (0.128" dia.) common wire nails. Framing lumber assumed to be Spruce-Pine-Fir No. 2 or better. Individual components not shown to scale for clarity.

#### WEB STIFFENERS

##### RECOMMENDATIONS:

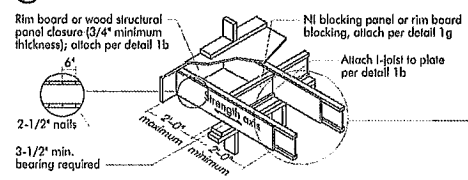
- A bearing stiffener is required in all engineered applications with factored reactions greater than shown in the I-joist properties table found in the I-joist Construction Guide (C101). The gap between the stiffener and the flange is at the top.
- A bearing stiffener is required when the I-joist is supported in a hanger and the sides of the hanger do not extend up to, and support, the top flange. The gap between the stiffener and flange is at the top.
- A load stiffener is required at locations where a factored concentrated load greater than 2,370 lbs is applied to the top flange between supports, or in the case of a cantilever, anywhere between the cantilever tip and the support. These values are for standard term load duration, and may be adjusted for other load durations as permitted by the code. The gap between the stiffener and the flange is at the bottom.

#### FIGURE 2 WEB STIFFENER INSTALLATION DETAILS

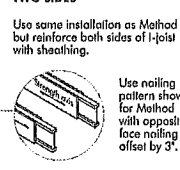


#### CANTILEVER DETAILS FOR VERTICAL BUILDING OFFSET

##### Method 1 — SHEATHING REINFORCEMENT ONE SIDE



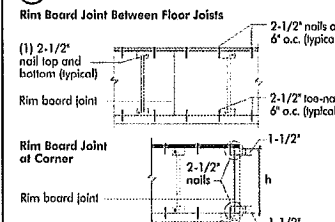
##### Method 2 — SHEATHING REINFORCEMENT TWO SIDES



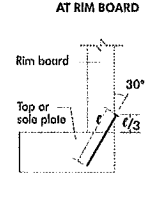
NOTE: Canadian softwood plywood sheathing or equivalent (minimum thickness 3/4") required on sides of joist. Depth shall match the full height of the joist. Nail with 2-1/2" nails at 6" o.c., top and bottom flange. Install with face grain horizontal. Attach I-joist to plate at all supports per detail 1b. Verify reinforced I-joist capacity.

#### RIM BOARD INSTALLATION DETAILS

##### 8a ATTACHMENT DETAILS WHERE RIM BOARDS ABUT



##### 8b TOE-NAIL CONNECTION AT RIM BOARD



The construction details for residential designs are prone to changes.

Details released after September 2013 supersedes N-303

Installation must comply with latest documentation on I-Joist and other Nordic products from the <http://nordic.ca/>

This document does not constitute a record of the structural integrity of the building nor suitability of the design assumptions made. Nordic Structures is responsible only for the structural adequacy of its component based on the design criteria and loadings shown on the calculation sheets.