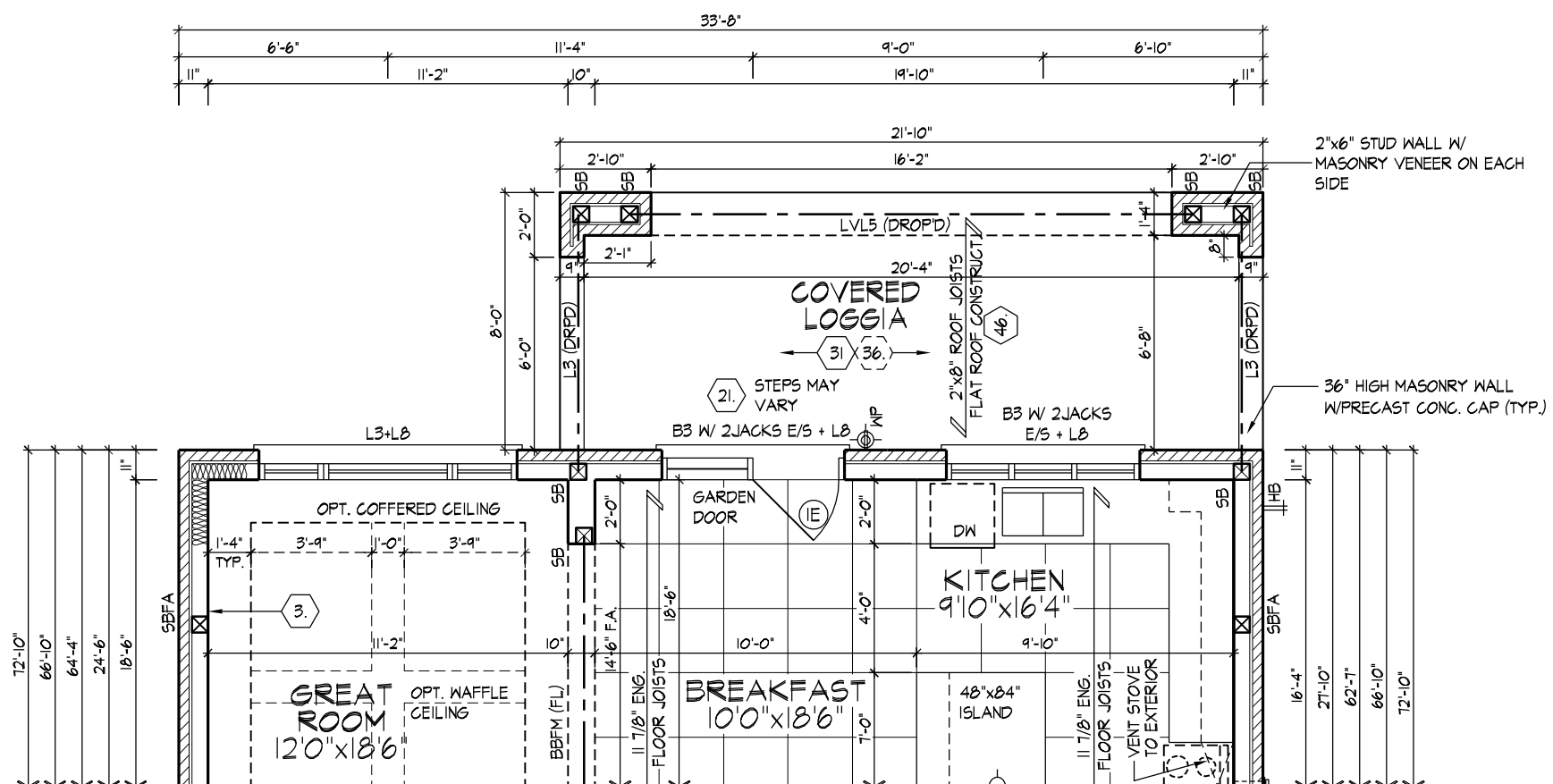
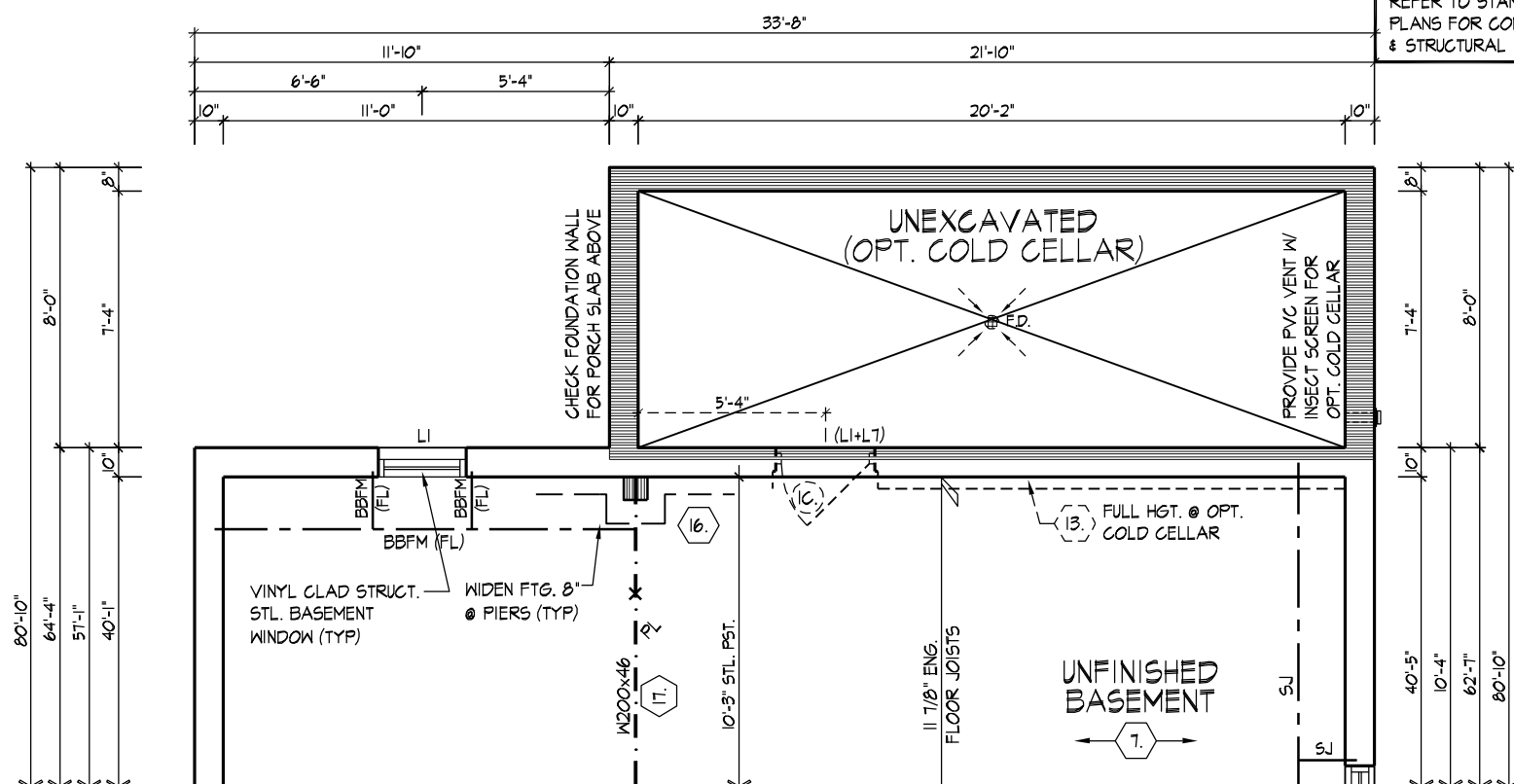


PART. SECOND FLOOR PLAN ELEV. 'A' - OPT. LOGGIA COND.
(ELEV. 'B' & 'C' SIMILAR)



PART. GROUND FLOOR PLAN ELEV. 'A' - OPT. LOGGIA COND.
(ELEV. 'B' & 'C' SIMILAR)

NOTE:
REFER TO STANDARD FLOOR
PLANS FOR COMPLETE DIMENSIONS
& STRUCTURAL INFORMATION



PART. BASEMENT PLAN ELEV. 'A' - OPT. LOGGIA COND.
(ELEV. 'B' & 'C' SIMILAR)

It is the builder's complete responsibility to ensure that all plans submitted for approval fully comply with the Architectural Guidelines and all applicable regulations and requirements including zoning provisions and any provisions in the subdivision agreement. The Control Architect is not responsible in any way for examining or approving site (lotting) plans or working drawings with respect to any zoning or building code or permit matter or that any house can be properly built or located on its lot.

This is to certify that these plans comply with the applicable Architectural Design Guidelines approved by the City of VAUGHAN.

PART. FLOOR PLANS - OPT. LOGGIA COND.

GOLDPARK HOMES - 221081 UNIT 4203 - THE FORESTCREST
PINE VALLEY PH. 2, VAUGHAN, ON. REV.2022.05.16

Drawn By	Checked By	Scale	File Number	Page Number
O FAIRBARN	VS	3/16"=1'-0"	221081WS4203.dwg	29 of 36
8966 Woodbine Ave. Markham, ON L3R 0J7 T 905.737.5133 F 905.737.7326				

AWHITING | THU DEC 1 | 22 10:26 AM | K:\PROJECTS\2021\221081.GOLD\WORKING\SINGLES\42\221081WS4203-FORRESTCREST.DWG

THE UNDERSIGNED HAS REVIEWED AND TAKES RESPONSIBILITY FOR THIS DESIGN AND HAS THE QUALIFICATIONS AND MEETS THE REQUIREMENTS SET OUT IN THE ONTARIO BUILDING CODE TO BE A DESIGNER.

QUALIFICATION INFORMATION		
Allan Whiting		23177
NAME	SIGNATURE	BCIN
REGISTRATION INFORMATION		
HUNT DESIGN ASSOCIATES INC.		19695

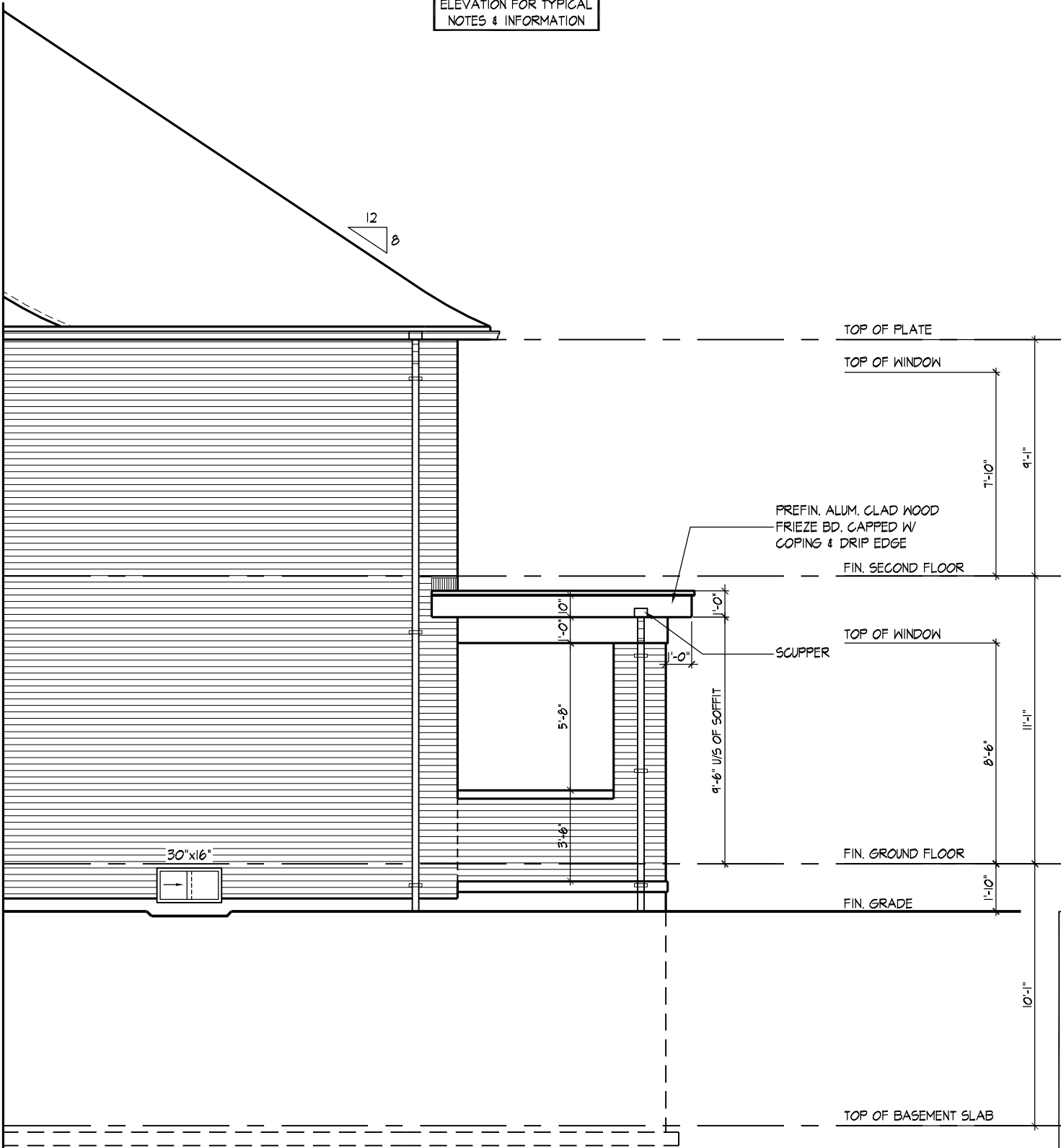
HUNT 
DESIGN ASSOCIATES INC.
www.huntdesign.ca

All drawings specifications related documents and design are the copyright property of Hunt Design Associates (H.D.A.). Reproduction of this property in whole or in part is strictly prohibited without H.D.A.'s written permission (H.D.A. assumes no responsibility or liability for this property unless it bears the appropriate BCIN number and original signature).



PART. REAR ELEVATION 'A' - OPT. LOGGIA COND.
(ELEV. 'B' & 'C' SIMILAR)

REFER TO STANDARD
ELEVATION FOR TYPICAL
NOTES & INFORMATION



PART. RIGHT SIDE ELEVATION 'A' - OPT. LOGGIA COND.
(ELEV. 'B' & 'C' SIMILAR)

REFER TO STANDARD
ELEVATION FOR TYPICAL
NOTES & INFORMATION

It is the builder's complete responsibility to ensure that all plans submitted for approval fully comply with the Architectural Guidelines and all applicable regulations and requirements including zoning provisions and any provisions in the subdivision agreement. The Control Architect is not responsible in any way for examining or approving site (lotting) plans or working drawings with respect to any zoning or building code or permit matter or that any house can be properly built or located on its lot.

This is to certify that these plans comply with the applicable Architectural Design Guidelines approved by the City of VAUGHAN.

PART. ELEVATIONS - OPT. LOGGIA COND.

THE UNDERSIGNED HAS REVIEWED AND TAKES RESPONSIBILITY FOR THIS DESIGN AND HAS THE QUALIFICATIONS AND MEETS THE REQUIREMENTS SET OUT IN THE ONTARIO BUILDING CODE TO BE A DESIGNER.

NAME SIGNATURE BCIN
Allan Whiting 23177

REGISTRATION INFORMATION
HUNT DESIGN ASSOCIATES INC. 19695

HUNT DESIGN ASSOCIATES INC.
www.huntdesign.ca

GOLDPARK HOMES - 221081
PINE VALLEY PH. 2, VAUGHAN, ON.

Drawn By O FAIRBARN
Checked By VS
Scale 3/16"=1'-0"

UNIT 4203 - THE FORESTCREST
REV.2022.05.16

File Number
221081WS4203.dwg

Page Number
30 of 36