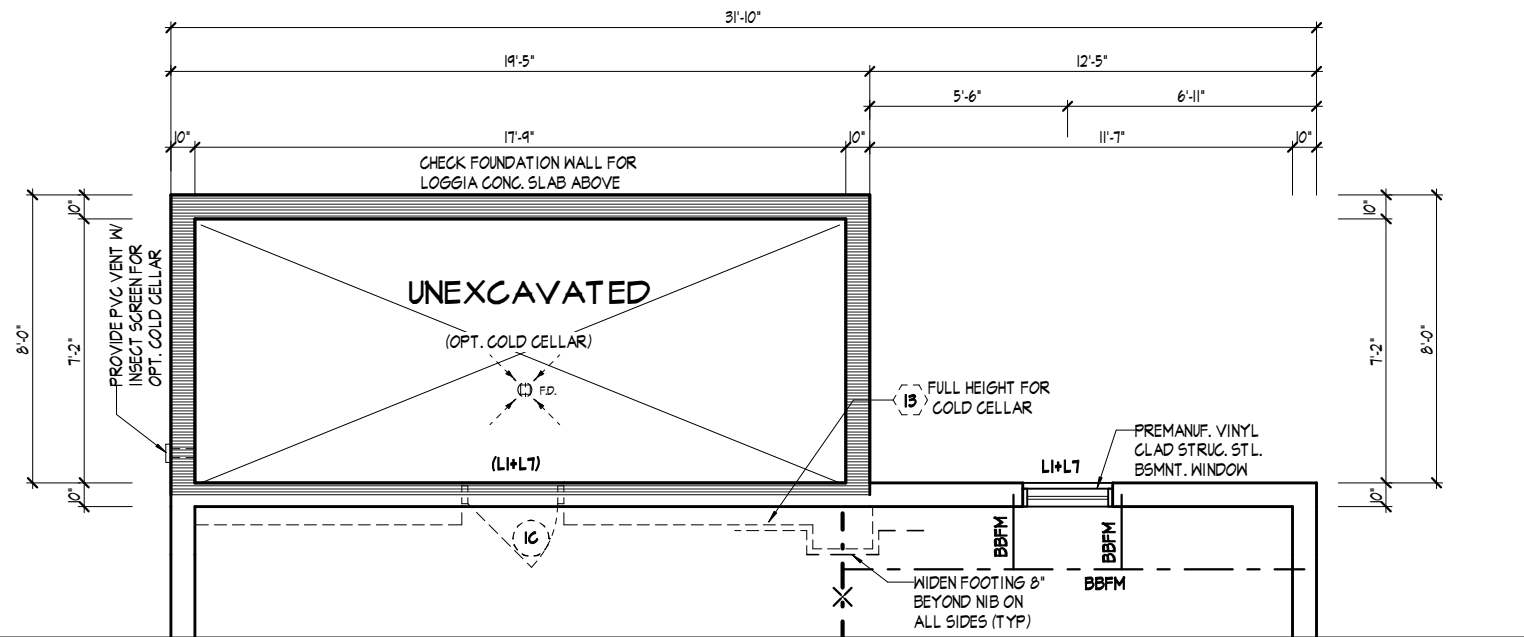


PART. GROUND FLOOR PLAN, ELEV. 'A', 'B' & 'C' FOR OPT. LOGGIA



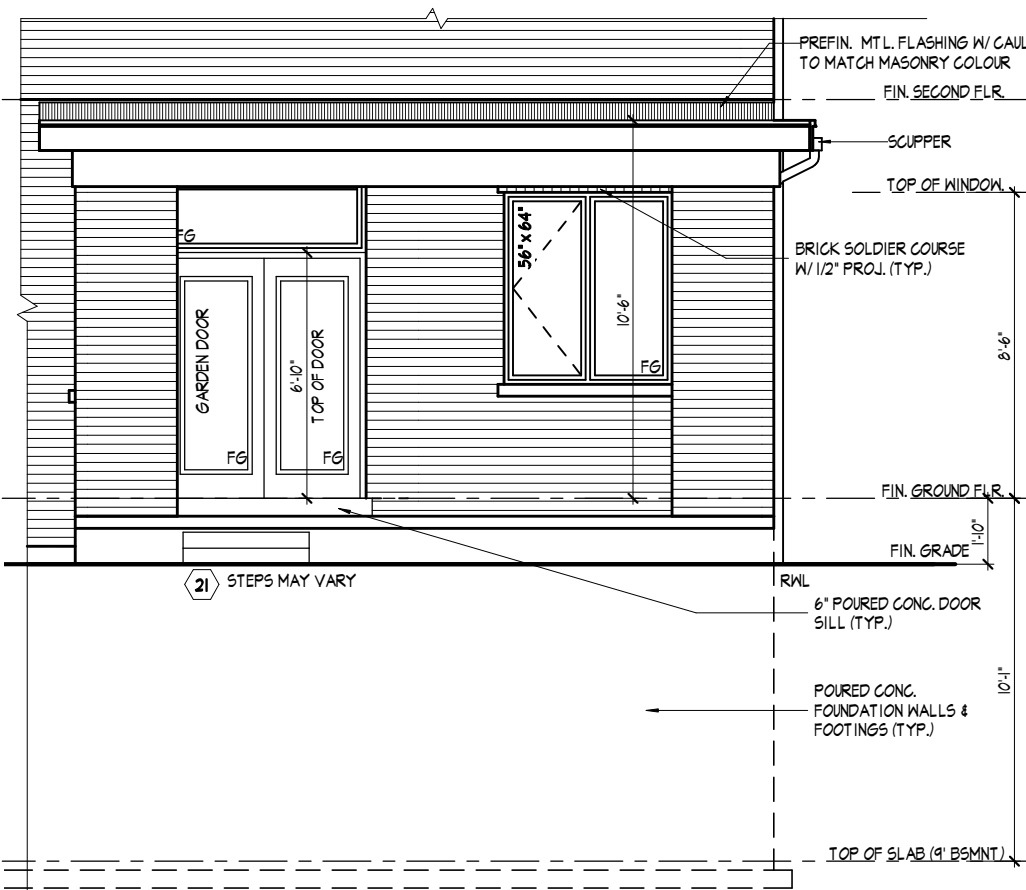
PART. BASEMENT PLAN, ELEV. 'A', 'B' & 'C' FOR OPT. LOGGIA

REFER TO STANDARD PLAN FOR COMPLETE CONSTRUCTION NOTES & DIMENSIONS
NOTE-STANDARD

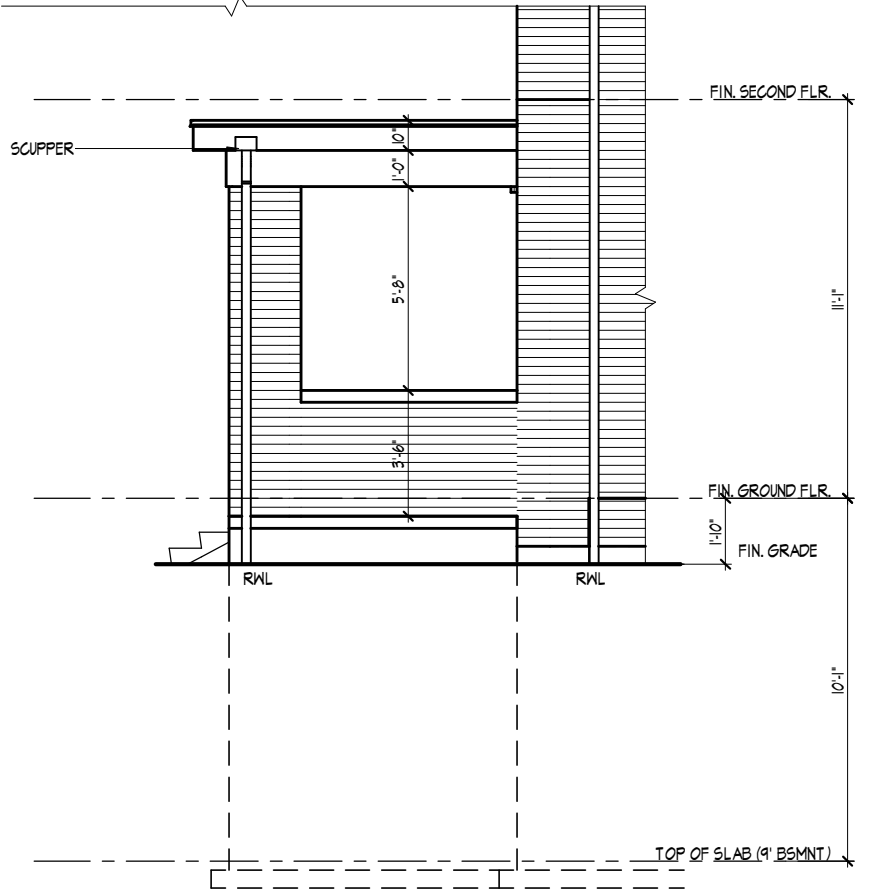
REFER TO FLOOR JOIST MANUFACTURER'S DRAWINGS FOR LAYOUT, SPACING, BLOCKING & STRAPPING REQUIREMENTS, INSTALLATION DETAILS AND HANGER SIZES, & SUBFLOOR THICKNESS
NOTE-ENGLR

REFER TO FRONT ELEVATION FOR TYPICAL NOTES & INFORMATION
NOTE-FRONT

PART. ROOF PLAN EL. 'A', 'B' & 'C' FOR OPT. LOGGIA (N.T.S)



PART. REAR ELEVATION, 'A', 'B' & 'C' FOR OPT LOGGIA



PART. LEFT SIDE ELEVATION, 'A', 'B' & 'C' FOR OPT LOGGIA

It is the builder's complete responsibility to ensure that all plans submitted for approval fully comply with the Architectural Guidelines and all applicable regulations and requirements including zoning provisions and any provisions in the subdivision agreement. The Control Architect is not responsible in any way for examining or approving site (lotting) plans or working drawings with respect to any zoning or building code or permit matter or that any house can be properly built or located on its lot.

This is to certify that these plans comply with the applicable Architectural Design Guidelines approved by the City of VAUGHAN.

OPT. LOGGIA PLANS & ELEVATIONS

THE UNDERSIGNED HAS REVIEWED AND TAKES RESPONSIBILITY FOR THIS DESIGN AND HAS THE QUALIFICATIONS AND MEETS THE REQUIREMENTS SET OUT IN THE ONTARIO BUILDING CODE TO BE A DESIGNER.

QUALIFICATION INFORMATION

NAME: Allan Whiting
SIGNATURE: [Signature]
BCIN: 23177

REGISTRATION INFORMATION

HUNT DESIGN ASSOCIATES INC. 19695

HUNT
DESIGN ASSOCIATES INC.
www.huntdesign.ca

GOLDPARK HOMES - 221081 UNIT 4003 - THE BROOKSIDE
PINE VALLEY, VAUGHAN, ONTARIO REV.2022.07.25

Drawn By: SN/BY
Checked By: AW
Scale: 3/16"=1'-0"
File Number: 217020WS4003.rvt
Page Number: 9 of 20
T905.737.5133 F905.737.7328

All drawings specifications related documents and design are the copyright property of Hunt Design Associates (H.D.A.). Reproduction of this property in whole or in part is strictly prohibited without H.D.A.'s written permission (H.D.A. assumes no responsibility or liability for this property unless it bears the appropriate BCIN number and original signature.)