

KitchenAid®

FOR THE WAY IT'S MADE.®

PRODUCT MODEL NUMBERS

KRFGC302E

Electrical: A 115 volt, 60 Hz, AC only 15- or 20-amp fused, grounded electrical supply is required. It is recommended that a separate circuit serving only your refrigerator and approved accessories be provided. Use an outlet that cannot be turned off by a switch. Do not use an extension cord.

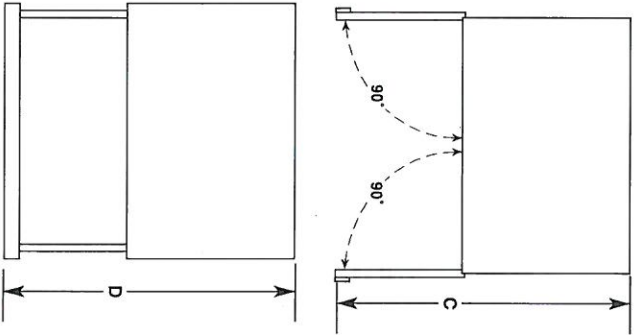
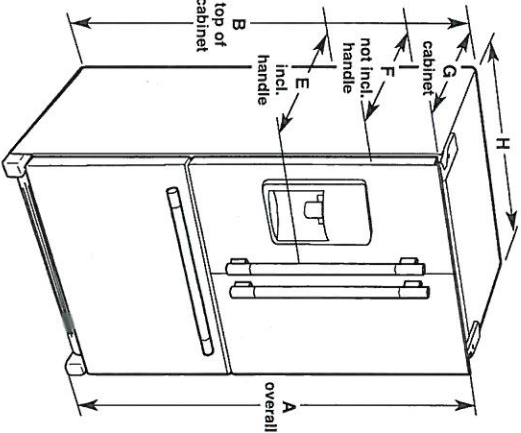
Water: A cold water supply with water pressure of between 35 and 120 psi (241 and 827 kPa) is required to operate the water dispenser and ice maker. If you have questions about your water pressure, call a licensed, qualified plumber.

Reverse Osmosis Water Supply:

IMPORTANT: The pressure of the water supply coming out of a reverse osmosis system going to the water inlet valve of the refrigerator needs to be between 35 and 120 psi (241 and 827 kPa).

Bottom Mount Refrigerator

PRODUCT DIMENSIONS



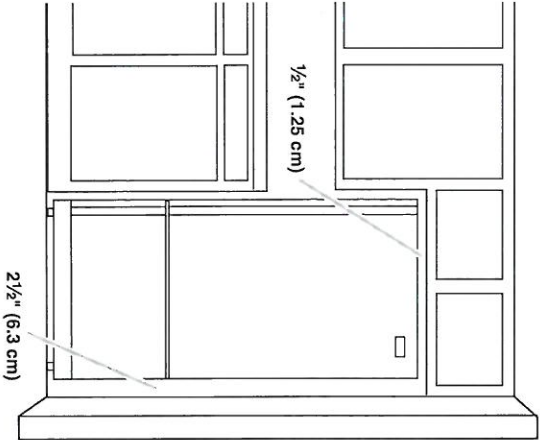
Model Size	Height - Overall "A"	Height - Top of Cabinet "B"	Depth - Doors Open 90° "C"	Depth - Drawer Open "D"	Depth - With Handles "E"	Depth - Without Handles "F"	Depth - Cabinet Only "G"	Width - Cabinet "H"
21.9	72" (182.9 cm)	71 3/8" (181.3 cm)	44 1/8" (112.1 cm)	45 1/4" (114.9 cm)	30 1/4" (76.8 cm)	27 1/2" (70.5 cm)	24 5/8" (62.5 cm)	35 3/4" (90.8 cm)

LOCATION REQUIREMENTS

IMPORTANT: This refrigerator is designed for indoor, household use only.

To ensure proper ventilation for your refrigerator, allow for 1/2" (1.25 cm) of space on each side and at the top. Allow for 1" (2.54 cm) of space behind the refrigerator. If your refrigerator has an ice maker, allow extra space at the back for the water line connections. When installing your refrigerator next to a fixed wall, leave 2 1/2" (6.3 cm) minimum on the hinge side (some models require more) to allow for the door to swing open.

NOTE: This refrigerator is intended for use in a location where the temperature ranges from a minimum of 55°F (13°C) to a maximum of 110°F (43°C). The preferred room temperature range for optimum performance, which reduces electricity usage and provides superior cooling, is between 60°F (15°C) and 90°F (32°C). It is recommended that you do not install the refrigerator near a heat source, such as an oven or radiator.



FOR THE WAY IT'S MADE.®

PRODUCT MODEL NUMBERS

Example Vent System

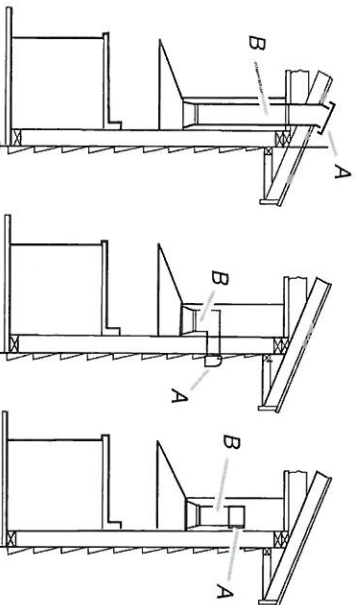
VENTING METHODS

A 6" (15.2 cm) round vent system is needed for installation (not included). The hood exhaust opening is 6" (15.2 cm) round.

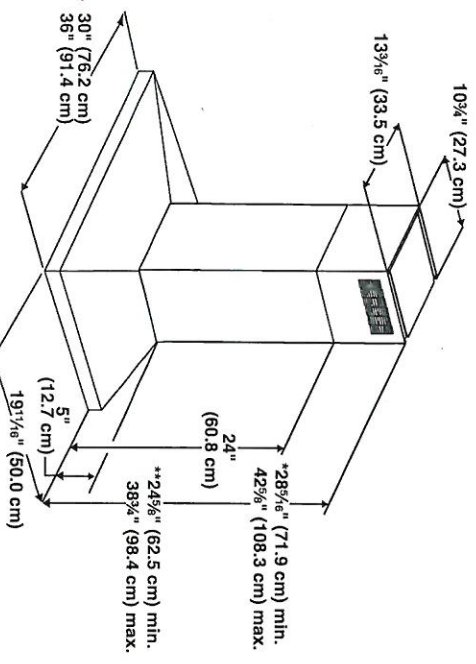
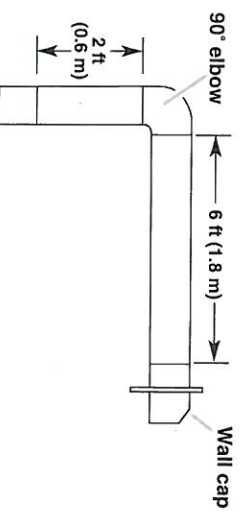
A 90° elbow may be installed immediately above the hood.

A 90° elbow may be installed immediately above the hood.

**Non-Vented
(Recirculating)**



Vent Piece	6" (15.2 cm) Round
45° elbow	2.5 ft (0.8 m)
90° elbow	5.0 ft (1.5 m)



PR-148
April 28, 2021

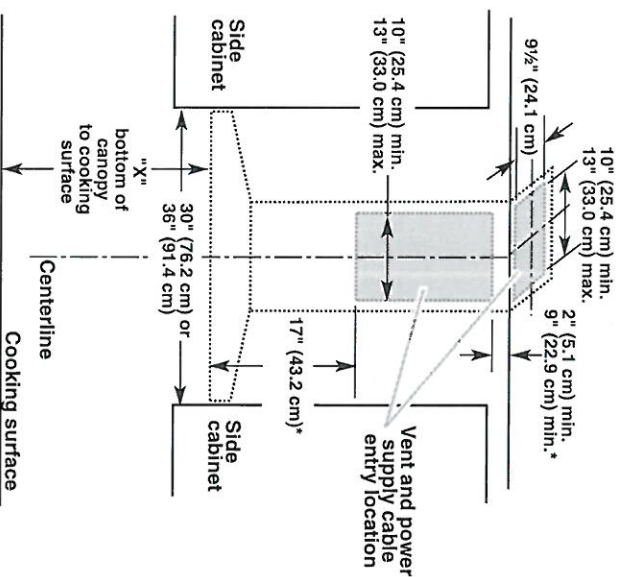
CABINET DIMENSIONS



The chimneys can be adjusted for different ceiling heights. See the following chart.

Vented Installations		
	Min. ceiling height	Max. ceiling height
Electric cooking surface	7' 1" (2.16 m)	9' 2" (2.79 m)
Gas cooking surface	7' 4" (2.23 m)	9' 2" (2.79 m)
Non-vented (recirculating) Installations		
	Min. ceiling height	Max. ceiling height
Electric cooking surface	7' 1" (2.16 m)	9' 6" (2.9 m)
Gas cooking surface	7' 4" (2.23 m)	9' 6" (2.9 m)

***NOTE:** The range hood chimneys are adjustable and designed to meet varying ceiling or soffit heights depending on the distance "X" between the bottom of the range hood and the cooking surface. For higher ceilings, a Chimney Extension Kit is available from your dealer or an authorized parts distributor. The chimney extension replaces the chimney shipped with the range hood. To order, see the "Assistance or Service" section.



*For non-vented (recirculating) installations

IMPORTANT:

Minimum distance "X": 24" (61.0 cm) from electric cooking surface.

Minimum distance "X": 27" (68.6 cm) from gas cooking surfaces.

Suggested maximum distance "X": 36" (91.4 cm)

PV-145
April 28, 2021
[Signature]

Prepared by

Ken Johnson




kjohnson@appliancecanada.com (416) 785-7083 3102






KitchenAid® 36" Smart Commercial-Style Gas Range with 6 Burners

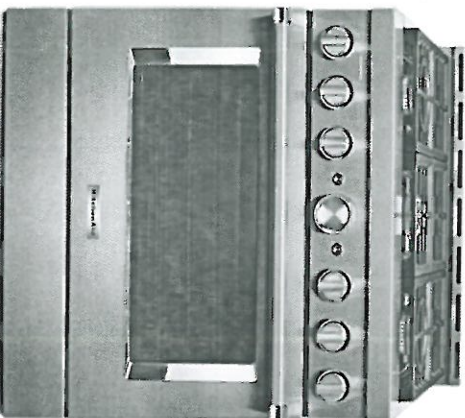
KFGC506JSS

Available Finishes/Colours

-  KFGC506JAV
Matte Avocado
-  KFGC506JIB
Ink Blue
-  KFGC506JMH
Matte Milkshake

-  KFGC506JBK
Imperial Black
-  KFGC506JMB
Misty Blue
-  KFGC506JPA
Passion Red

4 Additional finishes/colours available.



Expand your skills with a 36-inch KitchenAid® Commercial Style Range with 6 burners. This gas range features two versatile 20,000 BTU Ultra Power™ Dual-Flame Burners with the power and precision needed to successfully sear, simmer, stir-fry and sauté. Even-Heat™ True Convection helps you achieve more consistent baking and roasting.

Top Features

Even-Heat™ True Convection

Two 20,000 BTU Ultra Power™ Dual-Flame Burners

5,000 BTU Simmer & Melt Burner

Manuals & Literature:

 [Dimension Guide](#)

 [Installation Guide](#)

 [Use and Care Guide](#)

 [Warranty Information](#)

Dimensions			
Height	36	Power On Indicator Light	Yes
Width	35 7/8	Automatic Shut-Off	Yes
Configuration and Overview			
Fuel Type	Gas	Interior Color	Black
Range Type	Freestanding	Oven Control Location	Front
Size (I/N, inches)	36	Oven Control Type	Knobs
LP Convertible	Yes - Kit included	Oven Cooking System	True Convection
Exterior			
Door Removable	Yes	Hidden Bake Element	Yes
Oven Door	Metal & Glass	Broiler Location	Top Center
Oven Window Size	Large	Oven Light Switch Location	Oven Control
Handle Type	Towel Bar	Convection Functions	Bake, Roast
Handle Color	Stainless Steel	Misc.	
Handle Material	Metal	Accessory Relationships	Yes
Oven Details			
Door Removable	Yes		
Automatic Convection Conversion Temperature Adjust	Yes		

KitchenAid®

Because Whirlpool Corporation policy includes a continuous commitment to improve our products, we reserve the right to change materials and specifications without notice. Dimensions are for planning purposes only. For complete details, see installation instructions packed with product. Specifications subject to change without notice.

PV-145
April 28, 2021

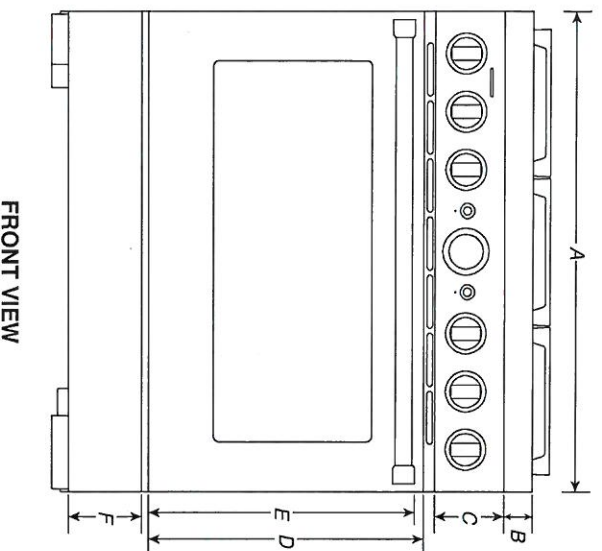
DIMENSIONS

COMMERCIAL-STYLE RANGES

1 of 30

PRODUCT DIMENSIONS

MODEL #	30" (76.2 cm) RANGES DUAL-FUEL/GAS KFDC500J/KFGC500J		36" (91.4 cm) RANGES DUAL-FUEL/GAS KFDC506J/KFGC506J	
Unit of Measurement	in	cm	in	cm
Overall Width (A)	29 ⁷ / ₈	75.9	35 ⁷ / ₈	91.1
Bullnose Height (B)	2 ³ / ₁₆	5.6	2 ³ / ₁₆	5.6
Control Panel Height (C)	5 ⁵ / ₁₆	13.5	5 ⁵ / ₁₆	13.5
Door Height (D)	20 ¹¹ / ₁₆	52.6	20 ¹¹ / ₁₆	52.6
Door Bottom to Handle Top (E)	20	50.8	20	50.8
Toe-Kick Height (F)	5 ¹ / ₂	14	5 ¹ / ₂	14



FRONT VIEW

IMPORTANT: Dimensional specifications are provided for planning purposes only. Do not make any cutouts based on this information. Refer to the Installation Guide before selecting cabinetry, verifying electrical/gas connections, making cutouts or beginning installation. All KitchenAid® appliances are appropriately UL, CUL or CSA approved.

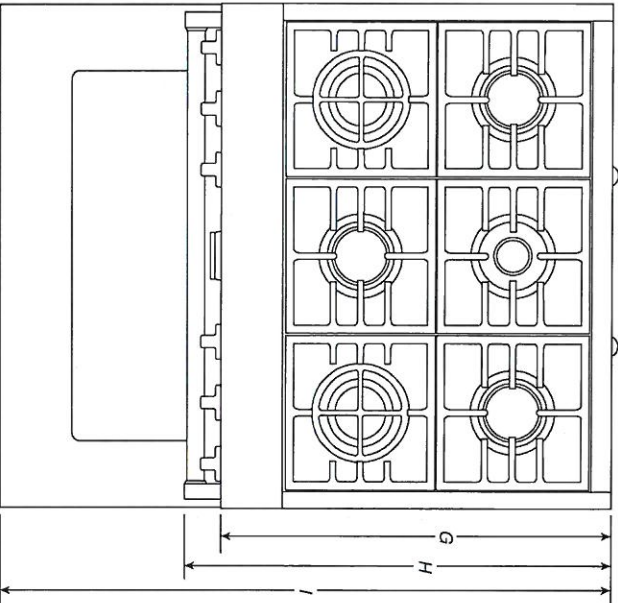
KitchenAid®
W11255637A

DIMENSIONS

COMMERCIAL-STYLE RANGES

PRODUCT DIMENSIONS

MODEL #	30" (76.2 cm) RANGES DUAL-FUEL/GAS KFDC500J/KFGC500J		36" (91.4 cm) RANGES DUAL-FUEL/GAS KFDC506J/KFGC506J	
Unit of Measurement	in	cm	in	cm
Depth with Control Panel Overhang (G)	27¾	70.5	27¾	70.5
Depth with Handle (H)	30¼	76.9	30¼	76.9
Depth with Door Fully Open (I)	46½	118.1	46½	118.1



TOP VIEW

IMPORTANT: Dimensional specifications are provided for planning purposes only. Do not make any cutouts based on this information. Refer to the Installation Guide before selecting cabinetry, verifying electrical/gas connections, making cutouts or beginning installation. All KitchenAid® appliances are appropriately UL, CUL or CSA approved.

RV-145
April 28, 2021
W

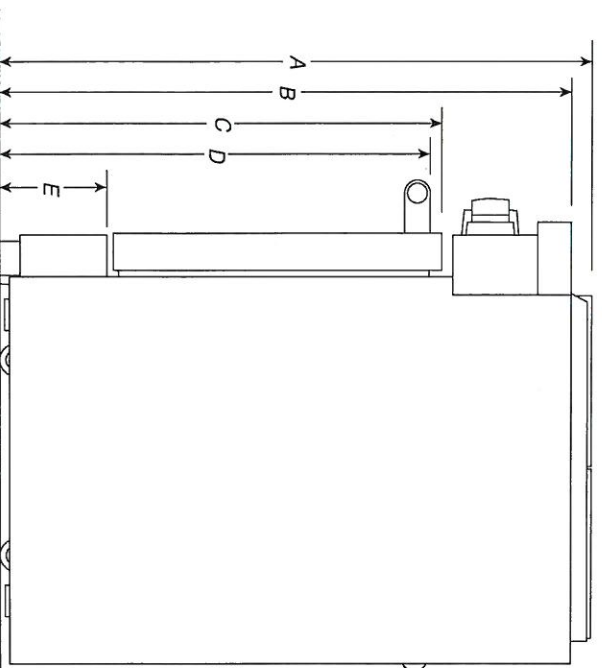
DIMENSIONS

5 of 30

COMMERCIAL-STYLE RANGES PRODUCT DIMENSIONS

MODEL #	30" (76.2 cm) RANGES DUAL-FUEL/GAS KFDC500J/KFGC500J		36" (91.4 cm) RANGES DUAL-FUEL/GAS KFDC506J/KFGC506J		48" (121.9 cm) RANGES DUAL-FUEL/GAS KFDC558J/KFGC558J	
Unit of Measurement	in	cm	in	cm	in	cm
Grates Top Height (A)	37 ³ / ₁₆	94.5	37 ³ / ₁₆	94.5	37 ³ / ₁₆	94.5
Cooking Surface Top Height (B)	36	91.4	36	91.4	36	91.4
Door Top Height (C)	27 ⁷ / ₈	70.8	27 ⁷ / ₈	70.8	27 ⁷ / ₈	70.8
Handle Top Height (D)	27 ¹ / ₈	68.9	27 ¹ / ₈	68.9	27 ¹ / ₈	68.9
Toe-Kick Height (E)	6 ⁵ / ₈	16.9	6 ⁵ / ₈	16.9	6 ⁵ / ₈	16.9
OTHER DIMENSIONS						
Maximum Feet Extension Height*	1 ¹ / ₂	3.8	1 ¹ / ₂	3.8	1 ¹ / ₂	3.8

* **IMPORTANT:** Minimum height dimensions are at the lowest point of the height adjustment range.
When the leveling legs are fully extended, all heights have 1¹/₂" (3.8 cm) of added height.



SIDE VIEW

IMPORTANT: Dimensional specifications are provided for planning purposes only.
Do not make any cutouts based on this information. Refer to the Installation Guide before selecting cabinetry, verifying electrical/gas connections, making cutouts or beginning installation. All KitchenAid® appliances are appropriately UL, CUL or CSA approved.

KitchenAid®

April 28, 2021

pv-145

W

DIMENSIONS

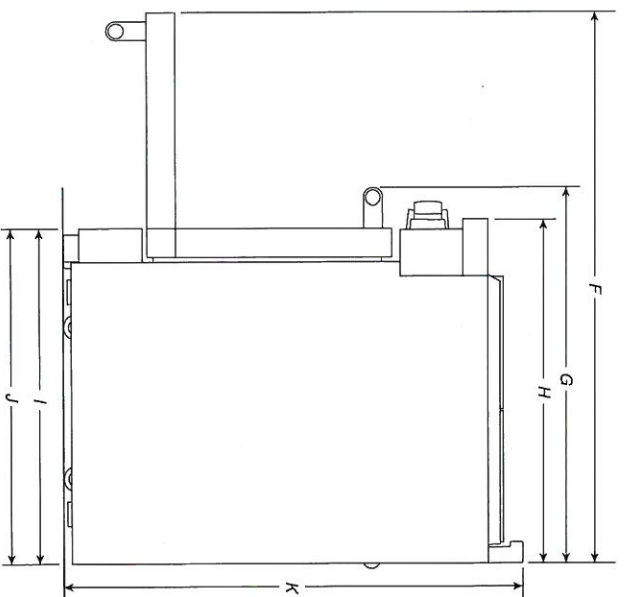
6 of 30

COMMERCIAL-STYLE RANGES

PRODUCT DIMENSIONS

MODEL #	30" (76.2 cm) RANGES DUAL-FUEL/GAS KFDC500J/KFGC500J	36" (91.4 cm) RANGES DUAL-FUEL/GAS KFDC506J/KFGC506J	48" (121.9 cm) RANGES DUAL-FUEL/GAS KFDC558J/KFGC558J
Unit of Measurement	in	in	in
Depth with Door Fully Open (F)	46½	46½	46½
Depth with Handle (G)	30¼	30¼	30¼
Depth with Control Panel Overhang (H)	27¾	27¾	27¾
Depth to Toe-Kick with Door (I)	27	27	27
Depth with Door (J)	27	27	27
OTHER DIMENSIONS			
Gas Vent Height (K)*	39	39	39

*Gas Units only: KFGC500J, KFGC506J and KFGC558J.



SIDE VIEW

IMPORTANT: Dimensional specifications are provided for planning purposes only. Do not make any cutouts based on this information. Refer to the Installation Guide before selecting cabinetry, verifying electrical/gas connections, making cutouts or beginning installation. All KitchenAid® appliances are appropriately UL, CUL or CSA approved.

KitchenAid®

PV-145
April 28, 2021

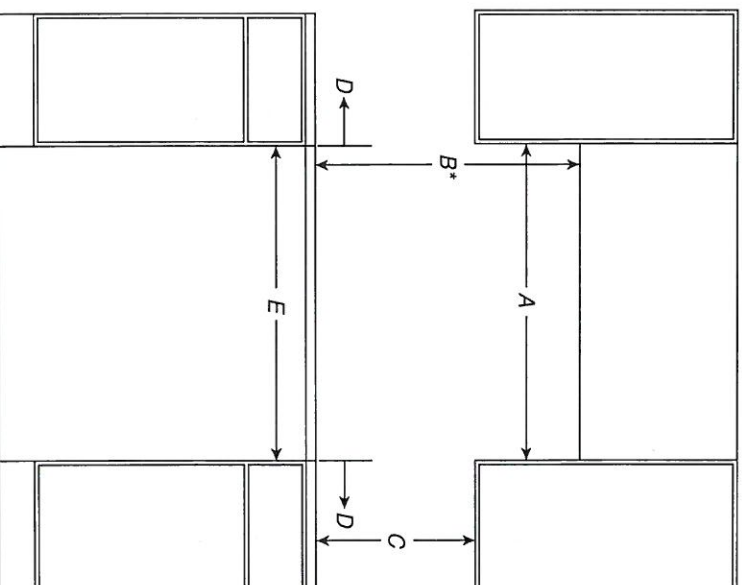
DIMENSIONS

COMMERCIAL-STYLE RANGES

OPENING/CLEARANCE DIMENSIONS

MODEL #	30" (76.2 cm) RANGES DUAL-FUEL/GAS KFDC500J/KFGC500J	36" (91.4 cm) RANGES DUAL-FUEL/GAS KFDC506J/KFGC506J	48" (121.9 cm) RANGES DUAL-FUEL/GAS KFDC558J/KFGC558J			
Unit of Measurement	in	cm	in	cm	in	cm
Combustible Area above Cooking Surface Width (min.) (A)	30	76.2	36	91.4	48	121.9
Bottom of Cabinet Height above Cooking Surface (min.) (B)*	42	106.7	58	147.3	58	147.3
Bottom of Cabinet Height above Countertop (min.) (C)	18	45.7	18	45.7	18	45.7
Distance to Fixed Wall or Combustible Material (min.) (D)	12	30.5	12	30.5	12	30.5
Opening Width (min.) (E)	30	76.2	36	91.4	48	121.9

* If installing a hood or hood liner above the range, follow the hood or hood liner instructions for dimensional clearances above the cooking surface.



FRONT VIEW

IMPORTANT: Dimensional specifications are provided for planning purposes only. Do not make any cutouts based on this information. Refer to the Installation Guide before selecting cabinetry, verifying electrical/gas connections, making cutouts or beginning installation. All KitchenAid® appliances are appropriately UL, CUL or CSA approved.

PV-145

April 28, 2021

DIMENSIONS

(Handwritten signature)

8 of 30

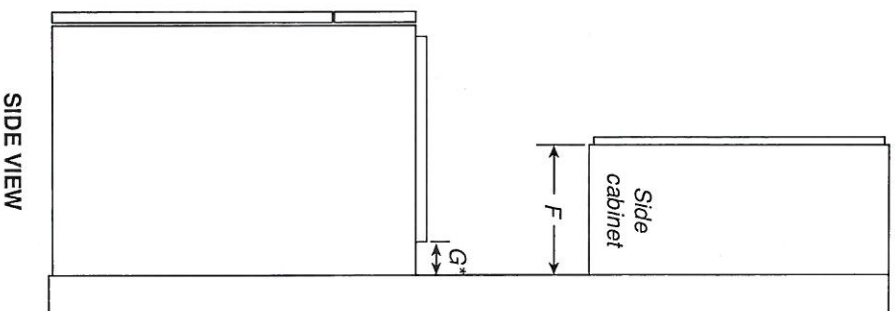
COMMERCIAL-STYLE RANGES

OPENING/CLEARANCE DIMENSIONS

MODEL #	30" (76.2 cm) RANGES DUAL-FUEL/GAS KFDC500J/KFGC500J		36" (91.4 cm) RANGES DUAL-FUEL/GAS KFDC506J/KFGC506J		48" (121.9 cm) RANGES DUAL-FUEL/GAS KFDC558J/KFGC558J	
Unit of Measurement	in	cm	in	cm	in	cm
Upper Cabinet Depth (max.) (F)	13	33	13	33	13	33
Depth from Wall to Grates (G)*	1 1/2	3.9	1 1/2	3.9	1 1/2	3.9
Depth from Wall to back of Unit**	0	0	0	0	0	0

* If the back wall is constructed of a combustible material and a backsplash is not installed a 7 1/2" (19.1 cm) minimum clearance is required.

** If the back wall is constructed of a combustible material and a backsplash is not installed a 6" (15.2 cm) minimum clearance is required.



SIDE VIEW

IMPORTANT: Dimensional specifications are provided for planning purposes only. Do not make any cutouts based on this information. Refer to the Installation Guide before selecting cabinetry, verifying electrical/gas connections, making cutouts or beginning installation. All KitchenAid® appliances are appropriately UL, CUL or CSA approved.

KitchenAid®

PR-145

April 25 2021

10/10/21

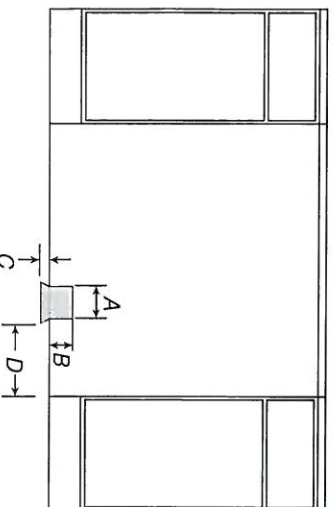
DIMENSIONS

10 of 30

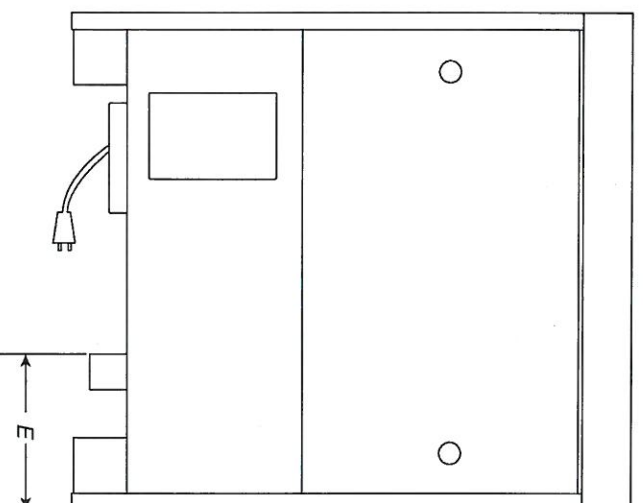
COMMERCIAL-STYLE RANGES GAS REQUIREMENTS

MODEL #	30" (76.2 cm) RANGES DUAL-FUEL/GAS KFDC500J/KFGC500J	36" (91.4 cm) RANGES DUAL-FUEL/GAS KFDC506J/KFGC506J	48" (121.9 cm) RANGES DUAL-FUEL/GAS KFDC558J/KFGC558J			
Unit of Measurement	in	cm	in	cm		
Gas Opening Width (A)	6	15.2	14	35.6	24	61
Gas Opening Height (B)	3	7.6	3	7.6	3	7.6
Gas Opening Depth (C)	5	12.7	5	12.7	5	12.7
Distance from Side Cabinet to Gas Opening (D)	9	22.9	9	22.9	9	22.9
Width to Gas Inlet (E)	12¾	32.4	12¾	32.4	12¾	32.4

RECOMMENDED GAS ZONE



WIDTH TO GAS INLET



NOTE: If you have questions about your gas supply, call a licenced, qualified service technician.

IMPORTANT: Dimensional specifications are provided for planning purposes only. Do not make any cutouts based on this information. Refer to the Installation Guide before selecting cabinetry, verifying electrical/gas connections, making cutouts or beginning installation. All KitchenAid® appliances are appropriately UL, CUL or CSA approved.

KitchenAid®
W11255637A

AV-145
April 28, 2021
WON

DIMENSIONS

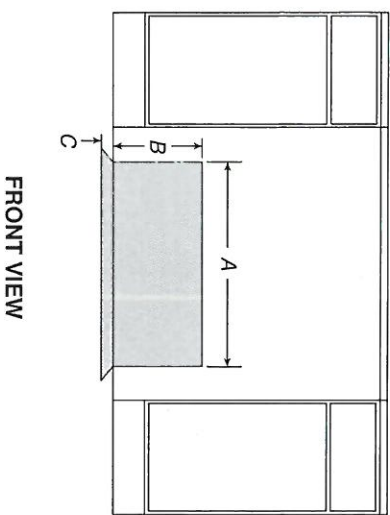
COMMERCIAL-STYLE RANGES

ELECTRICAL REQUIREMENTS

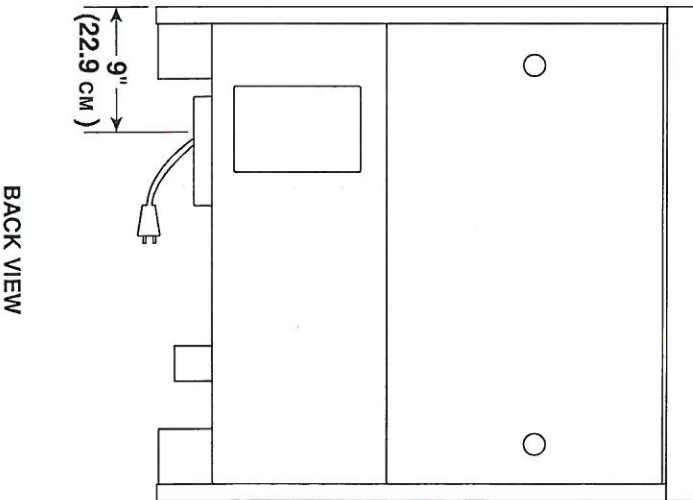
MODEL #	30" (76.2 cm) RANGES DUAL-FUEL/GAS KFDC500J/KFGC500J		36" (91.4 cm) RANGES DUAL-FUEL/GAS KFDC506J/KFGC506J		48" (121.9 cm) RANGES DUAL-FUEL/GAS KFDC558J/KFGC558J	
Unit of Measurement	in	cm	in	cm	in	cm
Electrical Zone Width (A)	22	55.9	28	71.1	40	101.6
Electrical Zone Height (B)	15	38.1	15	38.1	15	38.1
Electrical Zone Depth (C)	5	12.7	5	12.7	5	12.7

ELECTRIC REQUIREMENTS CHECKLIST	
<input type="checkbox"/> A 240 V, 60 Hz, fused, grounded circuit is required.	
<input type="checkbox"/> For 30" (76.2 cm) and 36" (91.4 cm) ranges, use a 40 A circuit.	
<input type="checkbox"/> For 48" (121.9 cm) ranges, use a 50 A circuit.	
<input type="checkbox"/> A dedicated circuit is recommended.	

RECOMMENDED ELECTRICAL ZONE



WIDTH TO ELECTRICAL CONDUIT



NOTE: If you have questions about your electrical supply, call a licenced, qualified electrician.

IMPORTANT: Dimensional specifications are provided for planning purposes only. Do not make any cutouts based on this information. Refer to the Installation Guide before selecting cabinetry, verifying electrical/gas connections, making cutouts or beginning installation. All KitchenAid® appliances are appropriately UL, CUL or CSA approved.