



CONSTRUCTION SUMMARY

Lot: 32  
Model: 40.03 A BROOKSIDE  
Project/Phase: Pine Valley Forevergreen / 1

APPLIANCES

Invoice	Qty.	Description
2674  29Mar21 NoCat	1	ATTACHED APPLIANCE SPECIFICATIOIS - SIGNED COPY
2713  30Apr21 NoCat	1	APPLIANCE SPECIFICATIONS UPDATED - SIGNED COPY ATTACHED  PREVIOUS APPLIANCE SPECIFICATOINS PROVIDED DO NOT APPLY

DRYWALL

Invoice	Qty.	Description
2713 72,690 30Apr21 **	1	DELETE KITCHEN BULKHEAD, IF POSSIBLE, SITE APPROVAL REQUIRED  A GAP ABOVE CABINETS WILL BE PRESENT UNLESS ADDITIONAL CABINETS ARE PURCHASED AT COLOUR APPOINTMENT



CONSTRUCTION SUMMARY

Lot: 32  
Model: 40.03 A BROOKSIDE  
Project/Phase: Pine Valley Forevergreen / 1

ELECTRICAL

Invoice	Qty.	Description
2713 72,280 30Apr21	1	FRONT EXTERIOR: INSTALL CAPPED CEILING LIGHT FIXTURE IN APPROX. CENTRE OF CEILING IN PORTICO - ON EXISTING SWITCH
2713 72,292 30Apr21	1	FRONT EXTERIOR: ADDITIONAL COACH LIGHT - SAME HEIGHT AND SWITCH AS STANDARD - SEE PLAN
2713 72,280 30Apr21	1	POWDER ROOM: IN ADDITION TO STANDARD VANITY LIGHT, ADD A CAPPED CEILING LIGHT FIXTURE APPROX. CENTRE ON CEILING ON EXISTING SWITCH
2713 72,289 30Apr21	1	LOWER LANDING AT MUD ROOM: 4" E/S LED INTERIOR POT LIGHT - INSTALL APPROX. CENTRE ON CEILING OF NICHE + ADDITIONAL SWITCH - SEE PLAN
2713 72,307 30Apr21	1	KITCHEN: RELOCATE STANDARD CEILING LIGHT FIXTURE TO APPROX. CENTRE ON CEILING ABOVE ISLAND - SEE PLAN
2713 72,281 30Apr21	1	MEDIA ROOM: INTERIOR WALL OUTLET: ADDITIONAL 110V WALL INTERIOR RECEPTACLE ON EXISTING CIRCUIT FOR WALL MOUNTED TV - APPROX. 54" A.F.F. - SEE PLAN
2713 72,273 30Apr21	1	KITCHEN: 110V WALL RECEPTACLE ON SEPARATE CIRCUIT - GAS FIRED APPLIANCE - FOR AUX. EQUIPMENT - NOT A STOVE PLUG
2713 72,289 30Apr21	6	KITCHEN: 4" E/S LED INTERIOR POT LIGHT - GROUND FLOOR - EACH - INCLUDES ONE SWITCH  INCLUDED IN APS



CONSTRUCTION SUMMARY

Lot: 32

Model: 40.03 A BROOKSIDE

Project/Phase: Pine Valley Forevergreen / 1

FRAMING

Invoice	Qty.	Description
2713 72,690 30Apr21	1	DELETE KITCHEN BULKHEAD, IF POSSIBLE, SITE APPROVAL REQUIRED  A GAP ABOVE CABINETS WILL BE PRESENT UNLESS ADDITIONAL CABINETS ARE PURCHASED AT COLOUR APPOINTMENT
2713  30Apr21 NoCat	1	FRONT EXTERIOR: INSTALL CAPPED CEILING LIGHT FIXTURE IN APPROX. CENTRE OF CEILING IN PORTICO - ON EXISTING SWITCH
2713  30Apr21 NoCat	1	FRONT EXTERIOR: ADDITIONAL COACH LIGHT - SAME HEIGHT AND SWITCH AS STANDARD - SEE PLAN



CONSTRUCTION SUMMARY

Lot: 32

Model: 40.03 A BROOKSIDE

Project/Phase: Pine Valley Forevergreen / 1

HVAC

Invoice	Qty.	Description
2713 72,224 30Apr21	1	KITCHEN: GAS LINE ROUGH-IN - MAIN FLOOR - SEE PLAN FOR APPROX. LOCATION.  FINAL LOCATION, ORIENTATION AND CONNECTION TO BE COMPLETED BY A LICENSED GAS FITTER AND ARRANGED BY HOME OWNER AFTER CLOSING
2713 72,690 30Apr21 **	1	DELETE KITCHEN BULKHEAD, IF POSSIBLE, SITE APPROVAL REQUIRED  A GAP ABOVE CABINETS WILL BE PRESENT UNLESS ADDITIONAL CABINETS ARE PURCHASED AT COLOUR APPOINTMENT

KITCHEN AND BATH CABINETRY

Invoice	Qty.	Description
2713 72,690 30Apr21 **	1	DELETE KITCHEN BULKHEAD, IF POSSIBLE, SITE APPROVAL REQUIRED  A GAP ABOVE CABINETS WILL BE PRESENT UNLESS ADDITIONAL CABINETS ARE PURCHASED AT COLOUR APPOINTMENT



CONSTRUCTION SUMMARY

Lot: 32  
Model: 40.03 A BROOKSIDE  
Project/Phase: Pine Valley Forevergreen / 1

MASONRY

Invoice	Qty.	Description
2713  30Apr21 NoCat	1	FRONT EXTERIOR: ADDITIONAL COACH LIGHT - SAME HEIGHT AND SWITCH AS STANDARD - SEE PLAN

NETWORK AND WIRING

Invoice	Qty.	Description
2713 72,259 30Apr21	1	MEDIA ROOM: CONDUIT PIPE - FOR WALL MOUNT TV - APPROX. 54" A.F.F., TERMINATE AT CABLE LOCATION
2713 72,258 30Apr21	1	MEDIA ROOM: ADDITIONAL CAT6 ETHERNET OUTLET - EACH - SEE PLAN FOR LOCATION
2713 72,258 30Apr21	1	STUDY: ADDITIONAL CAT6 ETHERNET OUTLET - EACH - SEE PLAN FOR LOCATION

PAINT

Invoice	Qty.	Description
2713 72,690 30Apr21 **	1	DELETE KITCHEN BULKHEAD, IF POSSIBLE, SITE APPROVAL REQUIRED  A GAP ABOVE CABINETS WILL BE PRESENT UNLESS ADDITIONAL CABINETS ARE PURCHASED AT COLOUR APPOINTMENT



CONSTRUCTION SUMMARY

Lot: 32  
Model: 40.03 A BROOKSIDE  
Project/Phase: Pine Valley Forevergreen / 1

PLUMBING

Invoice	Qty.	Description
2713 72,332 30Apr21	1	KITCHEN: ROUGH-IN 1/4" COLD WATER LINE TO FRIDGE
2713 75,841 30Apr21	1	SHARED ENSUITE: INSTALL MOEN TOE TESTER TO STANDARD SHOWER FAUCET PACKAGE - CHROME
2713 75,841 30Apr21	1	MASTER ENSUITE: INSTALL MOEN TOE TESTER TO STANDARD SHOWER FAUCET PACKAGE - CHROME



PV-32 SCHEDULE 'F'  
April 28, 2021

# The Brookside

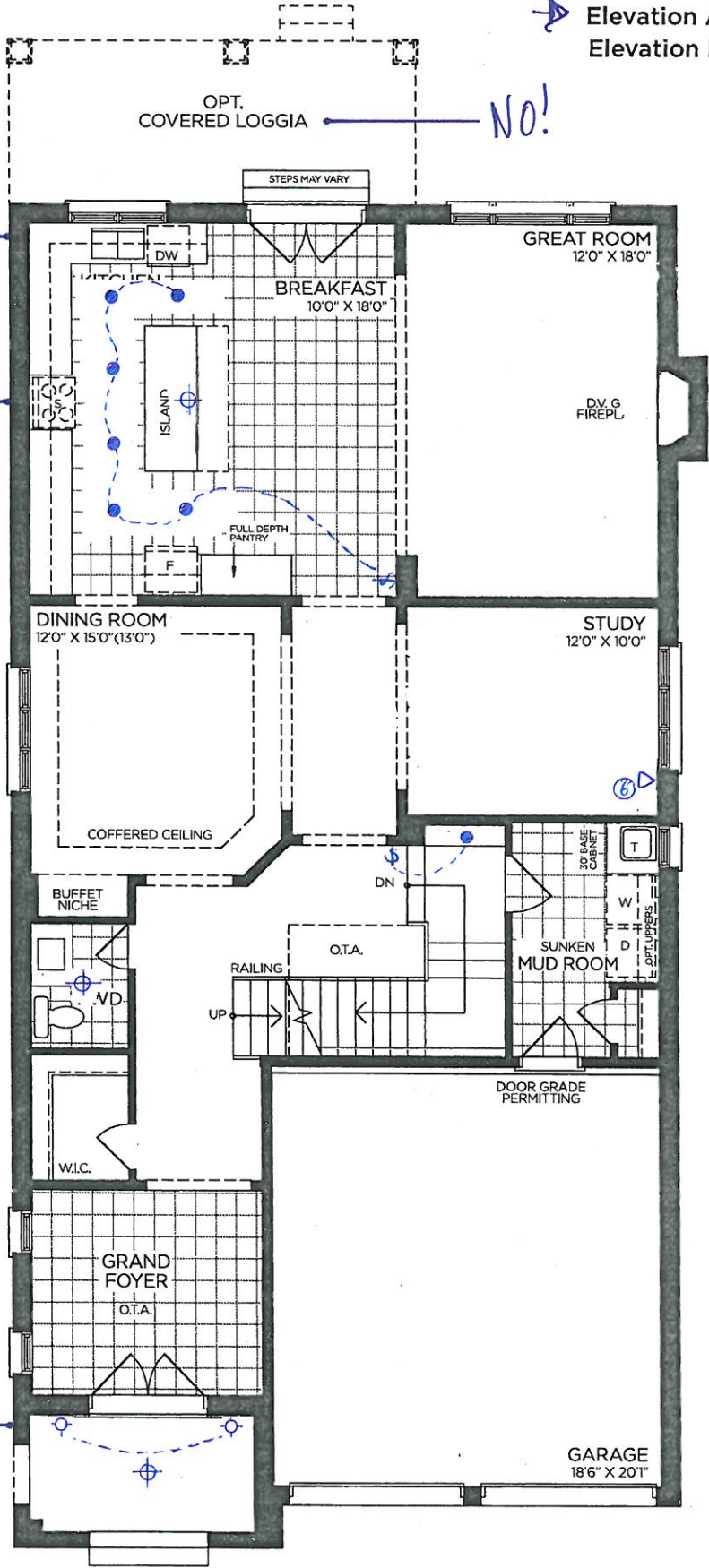
## 40' SERIES

Elevation A • 3,380 sq.ft.  
Elevation B • 3,350 sq.ft.

DELETE BULKHEAD  
IN KITCHEN

GAS + ELECT

NO!



GROUND FLOOR | ELEV. A

VENDOR

PURCHASER

PURCHASER

**GOLDPARK**  
WORTH MORE™

Prices, figures, illustrations, sizes, features and finishes are subject to change without notice. Areas and dimensions are approximate and actual usable floor space may vary from the stated area. Layout may be reverse of the unit purchased. E. & O.E. 4003

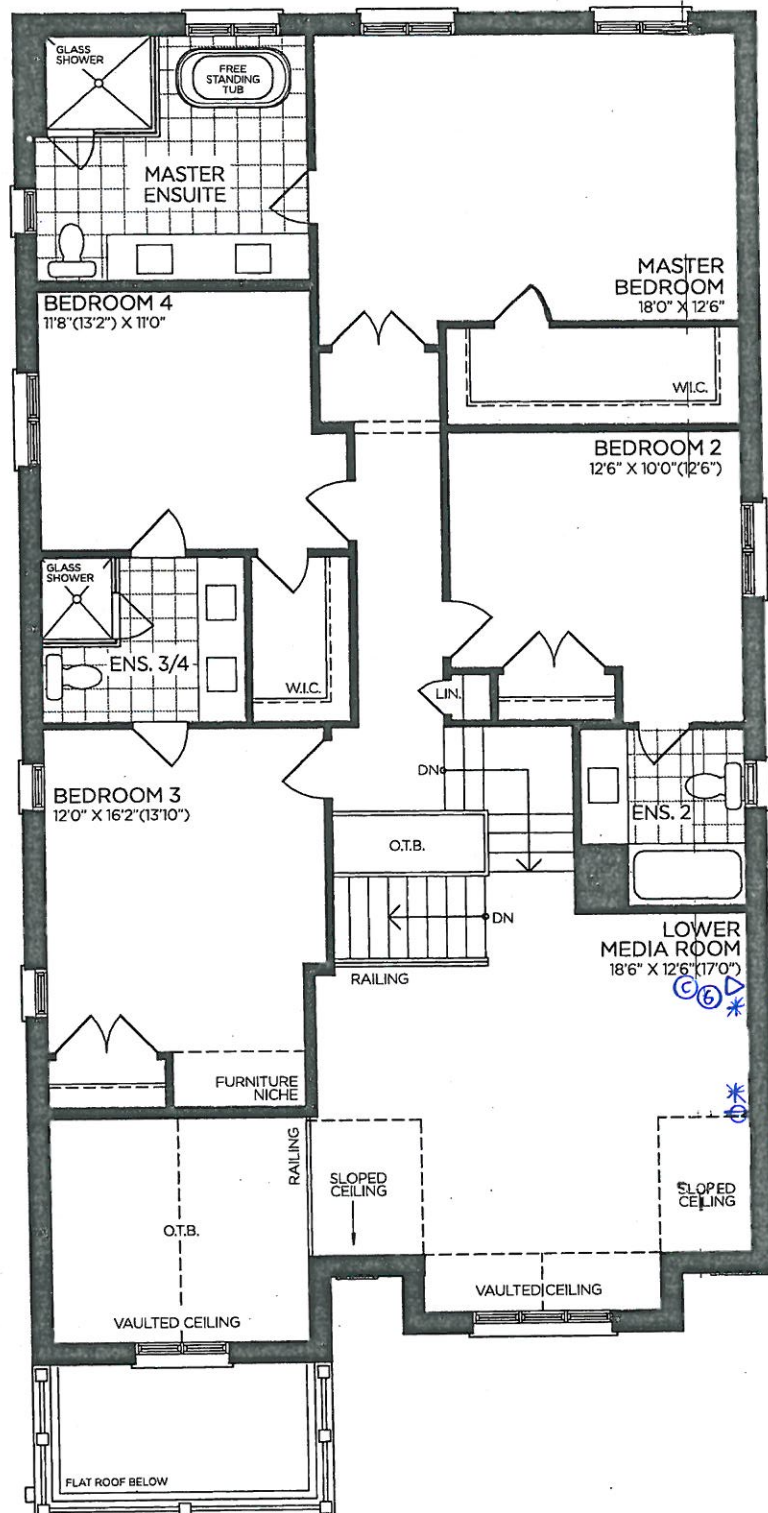


PR-32 SCHEDULE 'F'  
April 28, 2021 attach

# The Brookside

## 40' SERIES

Elevation A • 3,380 sq.ft.  
Elevation B • 3,350 sq.ft.



SECOND FLOOR | ELEV. A

CONDUIT TERMINATION

APPROX. 54" A.F.F.

VENDOR

PURCHASER

PURCHASER

**GOLDPARK**  
WORTH MORE™

Prices, figures, illustrations, sizes, features and finishes are subject to change without notice. Areas and dimensions are approximate and actual usable floor space may vary from the stated area. Layout may be reverse of the unit purchased. E. & O.E. 4003





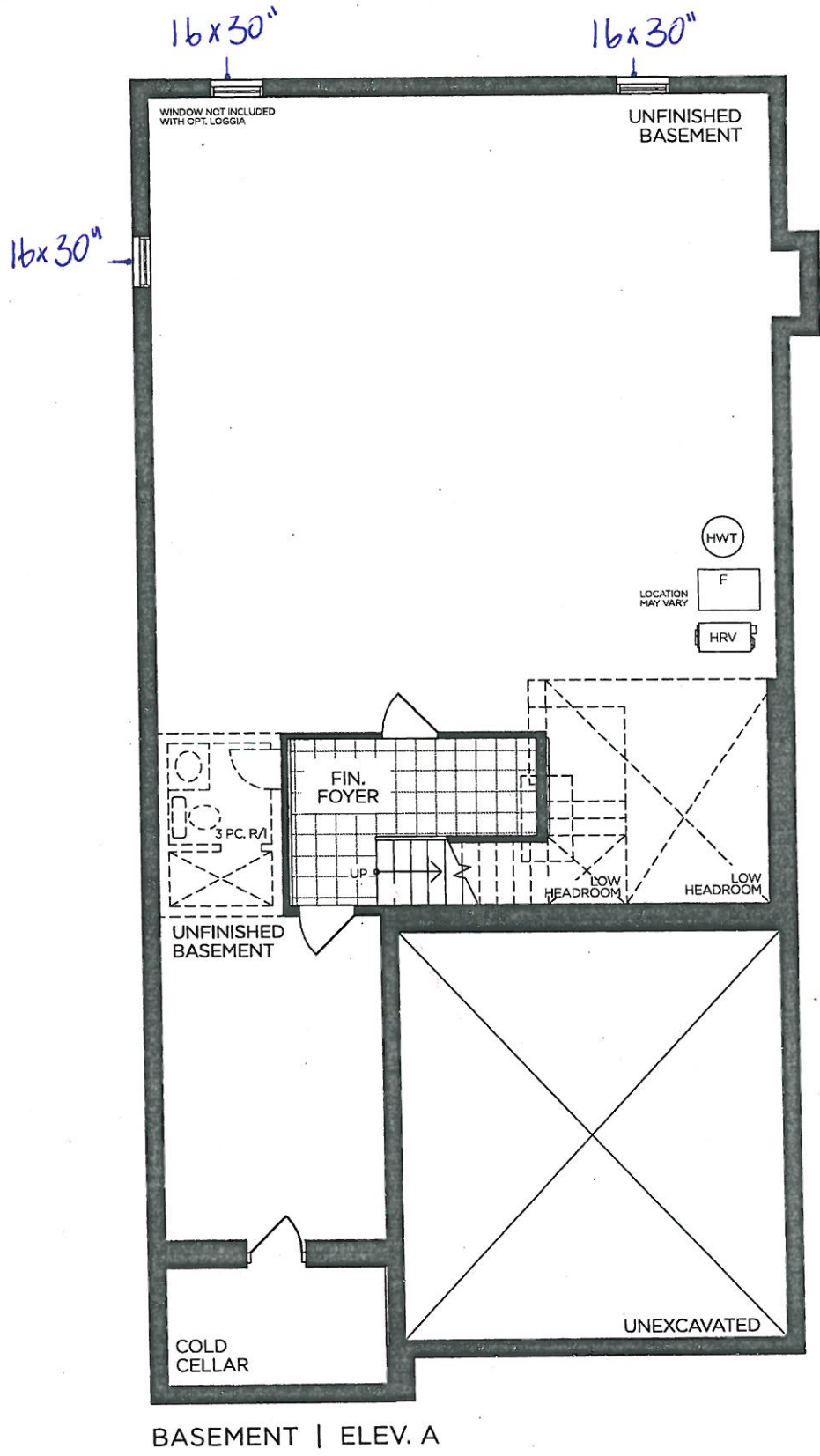
PV-32  
April 28, 2021 *attach*

SCHEDULE 'F'

# The Brookside

## 40' SERIES

Elevation A • 3,380 sq.ft.  
Elevation B • 3,350 sq.ft.



VENDOR

PURCHASER

PURCHASER

# GOLDPARK

WORTH MORE™

Prices, figures, illustrations, sizes, features and finishes are subject to change without notice. Areas and dimensions are approximate and actual usable floor space may vary from the stated area. Layout may be reverse of the unit purchased. E. & O.E. 4003



PV-32 ~~28~~ SCHEDULE 'F'  
April 28, 2021

# The Brookside 40' SERIES

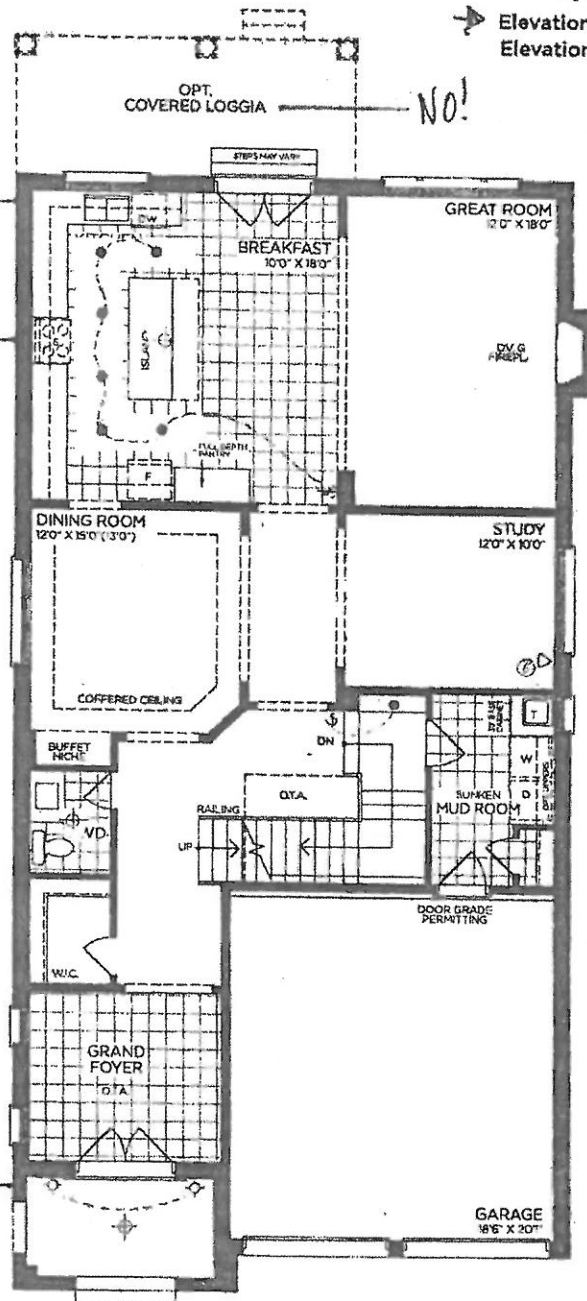
Elevation A • 3,380 sq.ft.  
Elevation B • 3,350 sq.ft.

DELETE BULKHEAD  
IN KITCHEN

GAS + ELECT

NO!

ONE STANDARD  
+ ONE ADDITIONAL



GROUND FLOOR | ELEV. A

VENDOR	
PURCHASER	
PURCHASER	

**GOLDPARK**  
WORTH MORE™

Prices, figures, illustrations, sizes, features and finishes are subject to change without notice. Areas and dimensions are approximate and actual usable floor space may vary from the stated area. Layout may be reverse of the unit purchased. E. & O.E. 4003

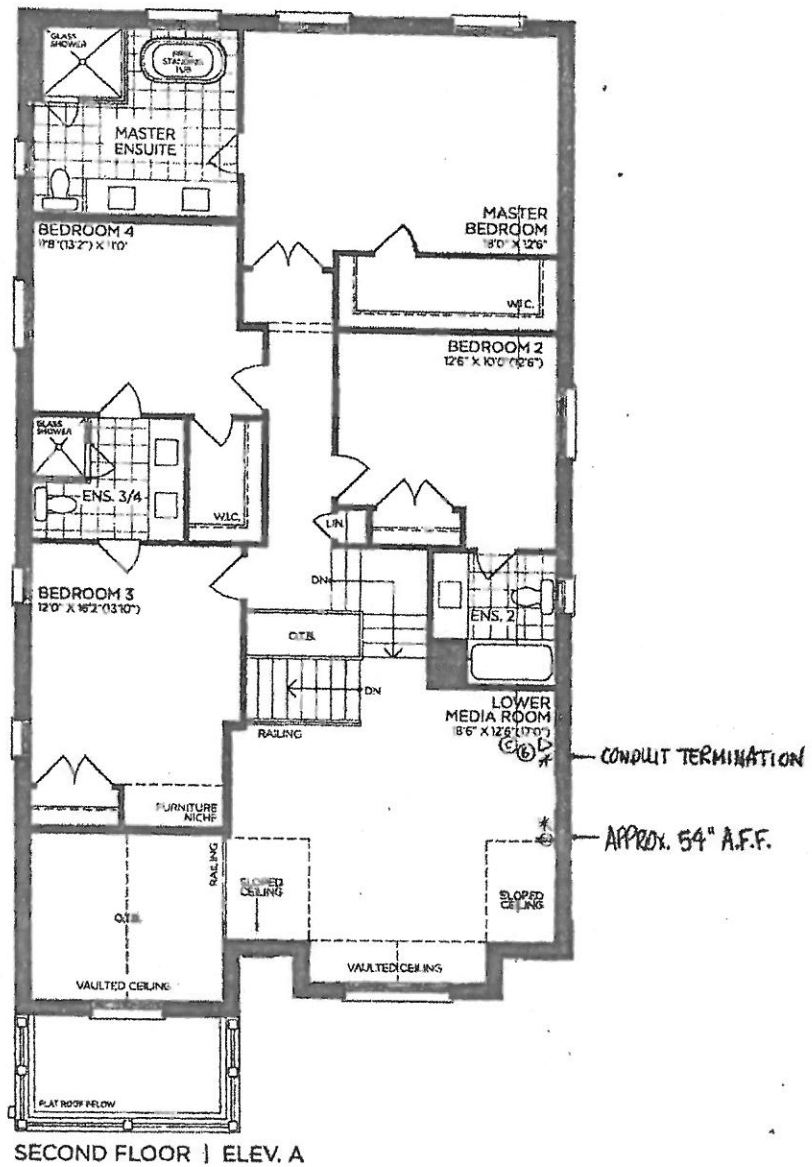


PV-32 SCHEDULE 'F'  
April 28, 2021

# The Brookside

## 40' SERIES

→ Elevation A • 3,380 sq.ft.  
Elevation B • 3,350 sq.ft.



VENDOR	
PURCHASER	
PURCHASER	

**GOLDPARK**  
WORTH MORE™

Prices, figures, illustrations, sizes, features and finishes are subject to change without notice. Areas and dimensions are approximate and actual usable floor space may vary from the stated area. Layout may be reverse of the unit purchased. E. & O.E. 4003



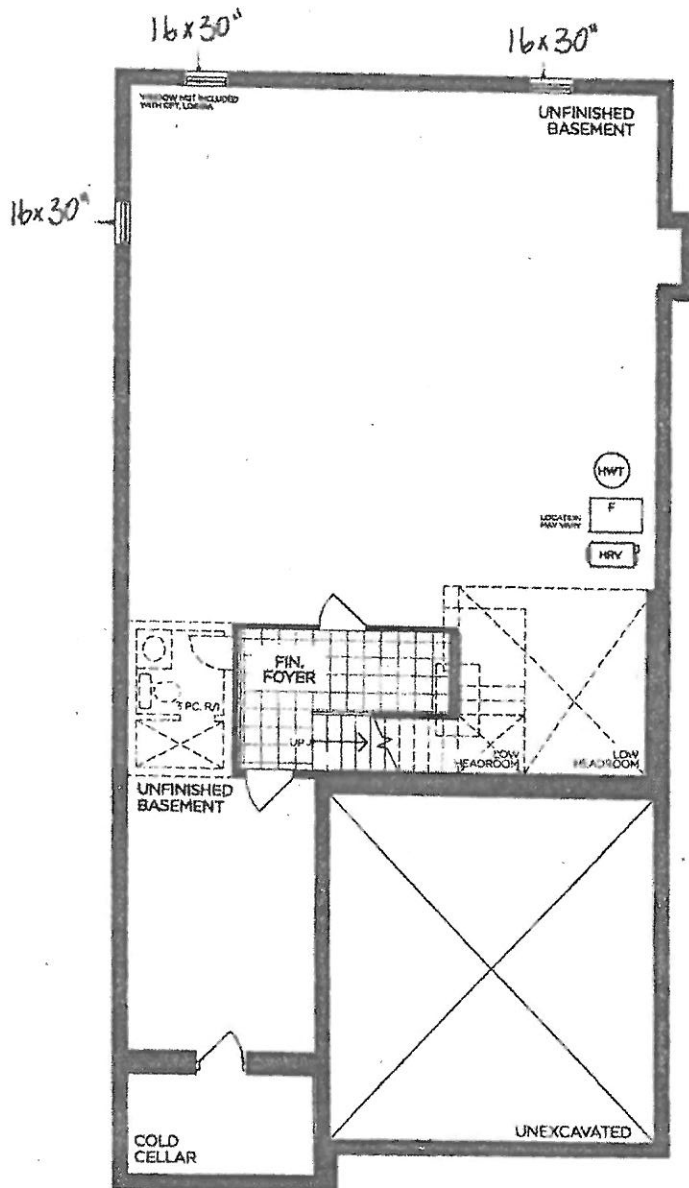
PV-32

SCHEDULE 'F'

April 28, 2024

# The Brookside 40' SERIES

→ Elevation A • 3,380 sq.ft.  
Elevation B • 3,350 sq.ft.



BASEMENT | ELEV. A

VENDOR

PURCHASER

PURCHASER

**GOLDPARK**  
WORTH MORE™

Prices, figures, illustrations, sizes, features and finishes are subject to change without notice. Areas and dimensions are approximate and actual usable floor space may vary from the stated area. Layout may be reverse of the unit purchased. E. & O.E. 4003



Lot 32, April 14, 2021

# 36" Counter-Depth 3-Door Refrigerator

800 Series – Stainless Steel B36CT80SNS



### B36CT80SNS Stainless Steel

Also available in:  
Black Stainless Steel  
B36CT80SNB

Introducing the revolutionary, new FarmFresh System™, with four freshness technologies designed to work together to keep your food fresher, longer. Enjoy less food waste, new innovative features and more thoughtful design.

#### Features & Benefits

VitaFreshPro™ provides pre-programmed freshness settings to optimize temperature and humidity to keep meat, fish, and produce fresher, longer.

Interior Water Dispenser is thoughtfully placed inside for refreshing water at the touch of a button or a push of a nozzle.

FlexBar™ utilizes typically unused space in the upper refrigerator cavity.

General Properties	
Full 72" height and true counter depth for built-in appearance	Yes
Easy Clean Stainless Steel	Yes
Lighting	Recessed LED light bars
Number of compressors/evaporators	2 / 2
Defrost process refrigerator section	Frost-free
Number of shelves – refrigerator	5
Adjustable shelves – refrigerator	4 half-width
Shelf material – refrigerator	Tempered glass
Type of shelves – refrigerator	Frameless split shelves with metal trim
Flexible storage bar	FlexBar™
Gallon storage bins	2
Humidity control compartments	2
Full width temp. & humidity controlled drawer	VitaFreshPro™
Ice maker	Yes
Water filter	UltraClarityPro™
Internal water dispenser	Yes
Touch control panel	Yes
AirFresh® filter	Yes
FreshProtect™ ethylene filter	Yes
MultiAirFlow™	Yes
Stainless steel back wall	Yes
Defrost process freezer section	Automatic
Number of drawers – freezer	3
Wi-Fi enabled	Yes, Home Connect™ app

Capacity	
Total capacity (cu. ft.)	20.8
Refrigerator capacity (cu. ft.)	14.8
Freezer capacity (cu. ft.)	6
Technical Details	
Current (A)	15 A
Volts (V)	115 V
Frequency (Hz)	60 Hz
Power cord length (in.)	91
Plug type	120V-3 prong
Dimensions & Weight	
Appliance dimensions with hinges, handles and doors (HxWxD) (in.)	72" x 35 5/8" x 31 1/8"
Appliance dimensions without hinges and doors (HxWxD) (in.)	71 1/2" x 35 5/8" x 24"
Appliance dimensions with hinges and doors, no handles (HxWxD) (in.)	72" x 35 5/8" x 28 3/4"
Required cutout size (HxWxD) (in.)	72" x 36" x 25"
Net weight (lbs)	350 lbs
Efficiency	
Energy consumption (kWh/yr)	570
ENERGY STAR® qualified	Yes
Accessories	
UltraClarityPro™ Water Filter: BORPLFTR50 FlexBar™ Bottle Holder: BOFLEXBOTL FlexBar™ Deep Shelf: BOFLEXLGSH FlexBar™ Shallow Shelf: BOFLEXSMH Ethylene Filter Refill Kit: FPETHRF50	

Home Connect



\*When leveling legs are fully extended, add 5/8" to overall height, total 72 5/8".

\*\*The cutout depth of 25" includes the required 1" airflow. The electrical covers on the back of unit do not require additional depth.

Accessories: To purchase Bosch accessories, cleaners & parts please visit [www.bosch-home.com/us/store](http://www.bosch-home.com/us/store) or call 1-800-944-2904 (Mon to Fri 5 am to 6 pm PST, Sat 6 am to 3 pm PST).

Notes: All height, width and depth dimensions are shown in inches. BSH reserves the absolute and unrestricted right to change product materials and specifications, at any time, without notice. Consult the product's installation instructions for final dimensional data and other details prior to making cutout.

Warranties: Please see Use & Care manual or Bosch website for statement of limited warranty.

For more information on our entire line of products, go to [www.bosch-home.com/us](http://www.bosch-home.com/us) or call 1-800-944-2904

© BSH Home Appliances Corporation. All rights reserved. Bosch is a registered trademark of Robert Bosch GmbH.



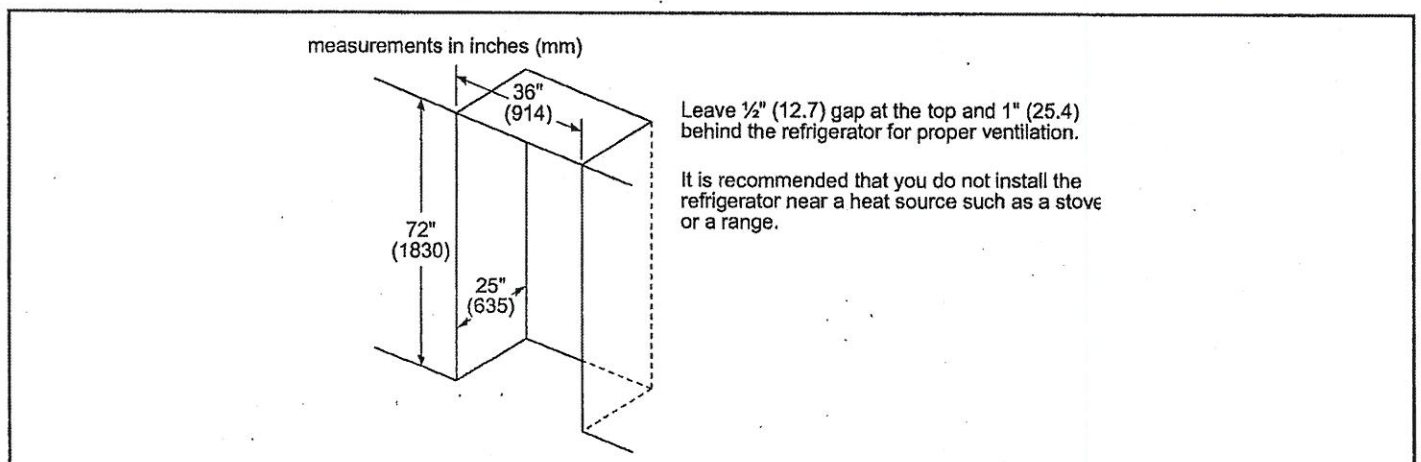
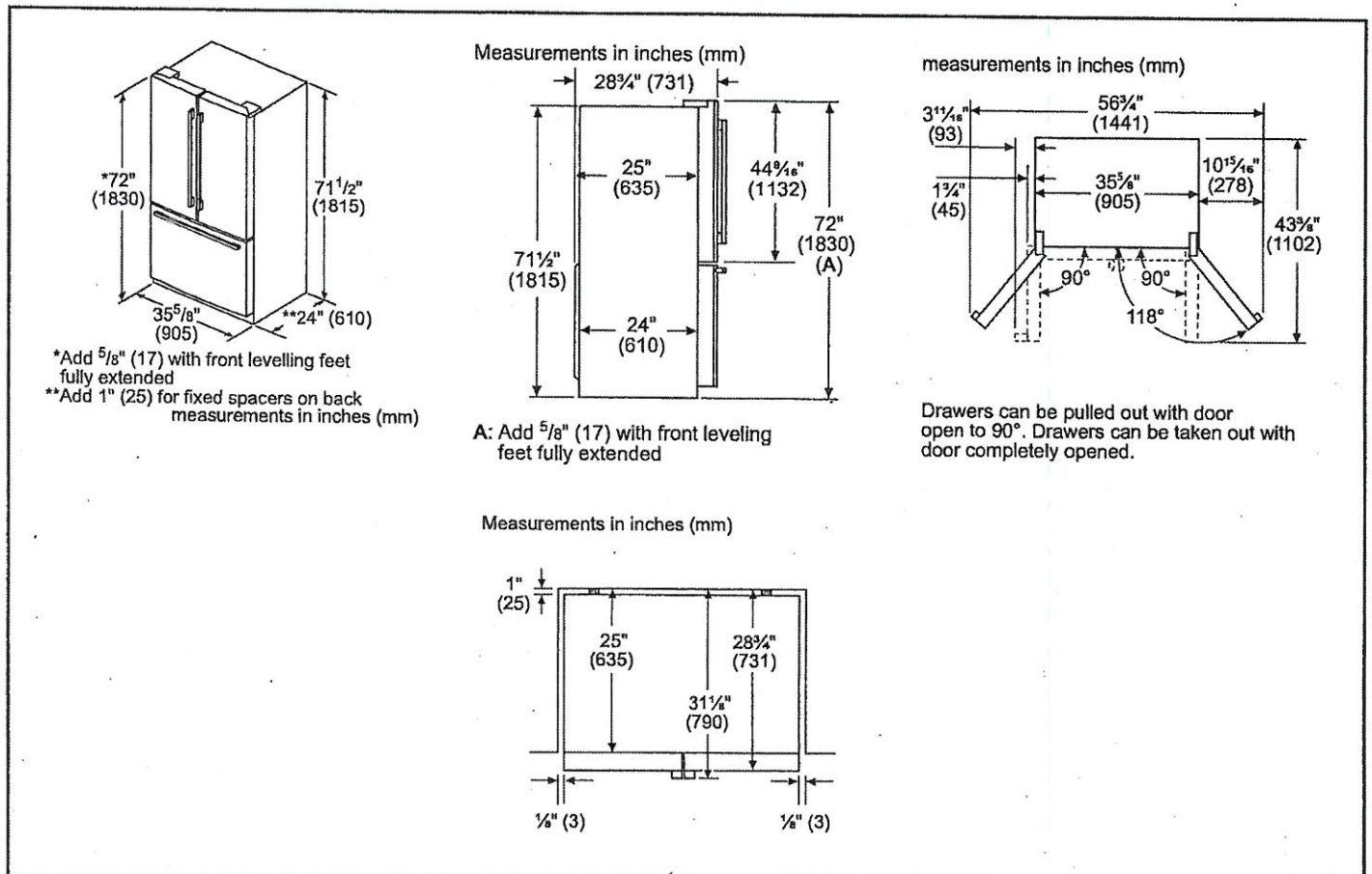
Lot 32 March 29/21

# 36" Counter-Depth 3-Door Refrigerator

800 Series – Stainless Steel B36CT80SNS



## Installation Details



**Accessories:** To purchase Bosch accessories, cleaners & parts please visit [www.bosch-home.com/us/store](http://www.bosch-home.com/us/store) or call 1-800-944-2904 (Mon to Fri 5 am to 6 pm PST, Sat 6 am to 3 pm PST).

**Notes:** All height, width and depth dimensions are shown in inches. BSH reserves the absolute and unrestricted right to change product materials and specifications, at any time, without notice. Consult the product's installation instructions for final dimensional data and other details prior to making cutout.

**Warranties:** Please see Use & Care manual or Bosch website for statement of limited warranty.

For more information on our entire line of products, go to [www.bosch-home.com/us](http://www.bosch-home.com/us) or call 1-800-944-2904

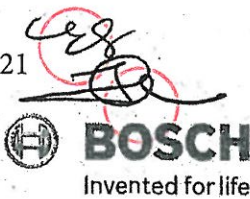
© BSH Home Appliances Corporation. All rights reserved. Bosch is a registered trademark of Robert Bosch GmbH.



# 24" Scoop Handle Dishwasher

300 Series DLX – Stainless Steel SHS863WD5N

Lot 32, April 14, 2021



**SHS863WD5N**  
Stainless Steel

Also available in:

White SHS863WD2N  
Black SHS863WD6N

The 3rd rack provides the perfect space for silverware and large utensils while its V shape leaves room below for taller items.

### Features & Benefits

44 dBA: Quietest dishwasher brand in North America.\*

A 3rd rack adds versatility and offers 30% more loading area.

FlexSpace™ Tines fold back to fit your larger pots & pans.

RackMatic® offers 3 height levels, for 9 possible rack positions.

Speed60® gets your dishes dirty to dry in about an hour.

General Properties	
Number of wash cycles	5
Number of options	5
dBA	44
Third rack	Standard 3rd Rack
Rack adjustability	Rackmatic
Tub material	Stainless Steel
Control type	Button
Concealed heating element	Yes
Leak protection system	24/7 AquaStop
Water softener	No
Five-level wash	Yes
ChildLock	No
Special features	Infolight®, Extra Dry Option

Efficiency	
Water usage per cycle	3.5
Energy efficiency class	Tier 1
ENERGY STAR® qualified	Yes
Total annual energy consumption (kWh)	269
Total annual water consumption (g)	623.5
Capacity	
Number of place settings	16

Technical Details	
Watts (W)	1440 W
Current (A)	12 Amps
Volts (V)	120 V
Frequency (Hz)	60 Hz
Power cord length	N/A
Minimum water pressure (lb/sin)	14
Length outlet hose (in)	79"

Dimensions & Weight	
Overall appliance dimensions (HxWxD) (in)	33 7/8" x 23 9/16" x 23 3/4"
Required cutout size (HxWxD) (in)	33 7/8" x 23 5/8" x 24"
Adjustable feet	Yes
Net weight (lbs)	91 lbs

Accessories—Optional	
Drain Hose Extension Kit	SGZ1010UC
Dishwasher Accessory Kit	SMZ5000
Anti-Tarnish Silverware Cassette	IMZ5002UC
Power Cord with Cold Plug	SMZPC002UC

\*Based on an average of sound ratings of 24" Full Size Stainless Steel Tub dishwashers contained in major brands US & Canadian websites. Major brands defined as TraQline Top 5 Market Share (US & Canada) December 2016.



For help and assistance with Bosch accessories please visit: [www.bosch-eshop.com/eshop/bosch/us](http://www.bosch-eshop.com/eshop/bosch/us) or call 1-800-944-2904 Mon-Fri 5am to 6pm PST Sat 6am to 3pm PST

Notes: All height, width and depth dimensions are shown in inches. BSH reserves the absolute and unrestricted right to change product materials and specifications, at any time, without notice. Consult the product's installation instructions for final dimensional data and other details prior to making cutout. Applicable product warranty can be found in accompanying product literature or you may contact your account manager for further details.

Warranties: Bosch warrants that the Product is free from defects in materials and workmanship for a period of three hundred and sixty-five (365) days from the date of purchase. The foregoing timeline begins to run upon the date of purchase, and shall not be stalled, tolled, extended, or suspended, for any reason whatsoever. This Product is also warranted to be free from cosmetic defects in material and workmanship (such as scratches of stainless steel, paint/porcelain blemishes, chip, dents, or other damage) to the finish of the Product, for a period of thirty (30) days from the date of purchase or closing date for new construction. This cosmetic warranty excludes slight color variations due to inherent differences in painted and porcelain parts, as well as differences caused by kitchen lighting, product location, or other similar factors. This cosmetic warranty specifically excludes any display, floor, "As Is", or "B" stock appliances.

For more information on our entire line of products, go to [www.bosch-home.com/us](http://www.bosch-home.com/us) or call 1-800-944-2904

© BSH Home Appliances Corporation. All rights reserved. Bosch is a registered trademark of Robert Bosch GmbH.

05/17



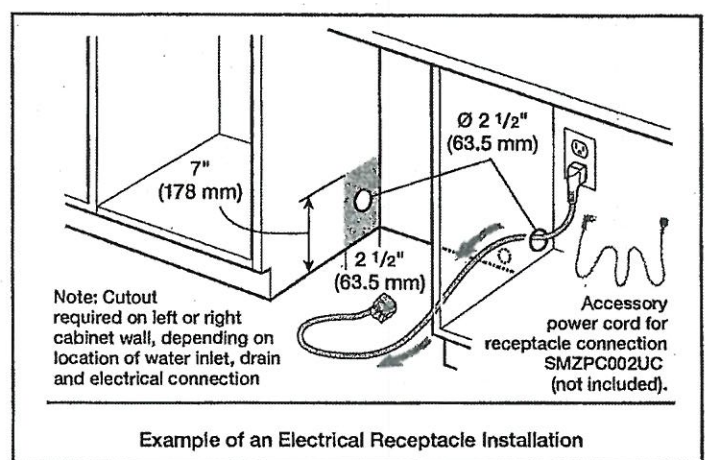
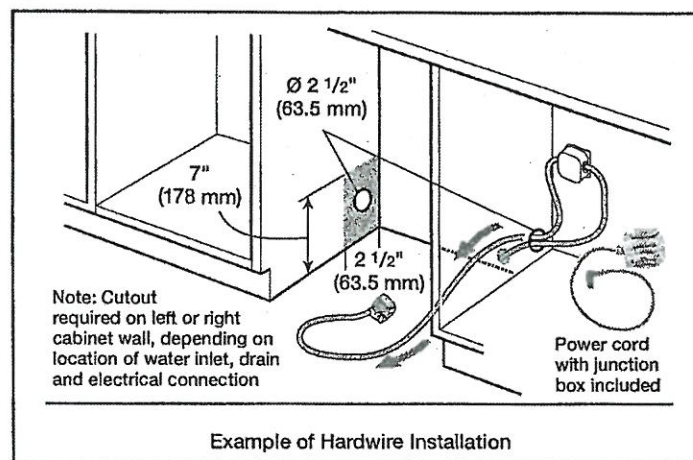
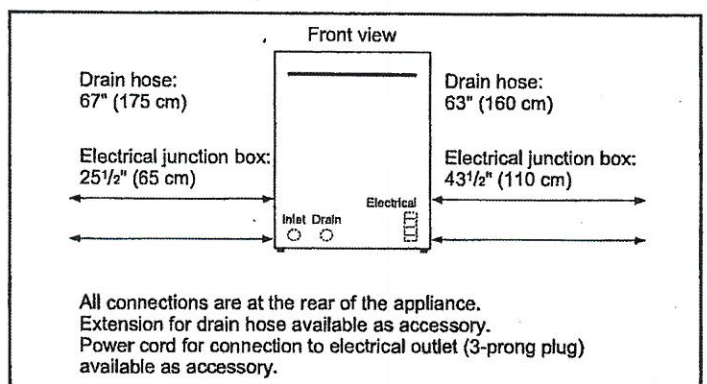
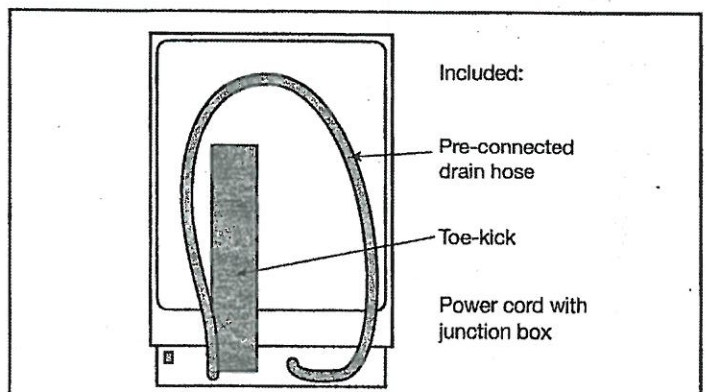
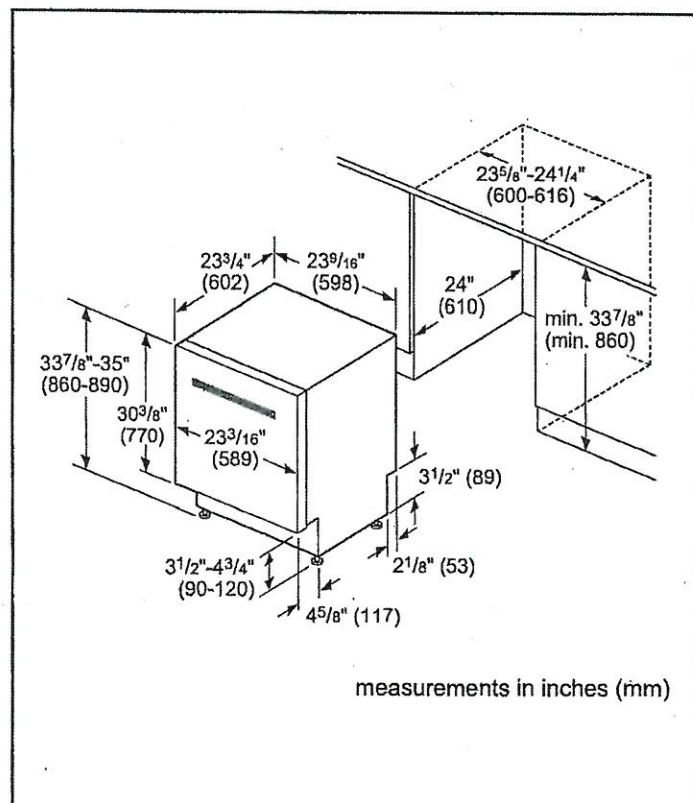
lot 32 March 29/21

# 24" Scoop Handle Dishwasher

300 Series DLX – Stainless Steel SHS863WD5N



## Installation Details



For help and assistance with Bosch accessories please visit: [www.bosch-eshop.com/eshop/bosch/us](http://www.bosch-eshop.com/eshop/bosch/us) or call 1-800-944-2904 Mon-Fri 5am to 6pm PST Sat 6am to 3pm PST

Notes: All height, width and depth dimensions are shown in inches. BSH reserves the absolute and unrestricted right to change product materials and specifications, at any time, without notice. Consult the product's Installation instructions for final dimensional data and other details prior to making cutout. Applicable product warranty can be found in accompanying product literature or you may contact your account manager for further details.

Warranties: Bosch warrants that the Product is free from defects in materials and workmanship for a period of three hundred and sixty-five (365) days from the date of purchase. The foregoing timeline begins to run upon the date of purchase, and shall not be stalled, tolled, extended, or suspended, for any reason whatsoever. This Product is also warranted to be free from cosmetic defects in material and workmanship (such as scratches of stainless steel, paint/porcelain blemishes, chip, dents, or other damage) to the finish of the Product, for a period of thirty (30) days from the date of purchase or closing date for new construction. This cosmetic warranty excludes slight color variations due to inherent differences in painted and porcelain parts, as well as differences caused by kitchen lighting, product location, or other similar factors. This cosmetic warranty specifically excludes any display, floor, "As Is", or "B" stock appliances.

For more information on our entire line of products, go to [www.bosch-home.com/us](http://www.bosch-home.com/us) or call 1-800-944-2904

© BSH Home Appliances Corporation. All rights reserved. Bosch is a registered trademark of Robert Bosch GmbH.



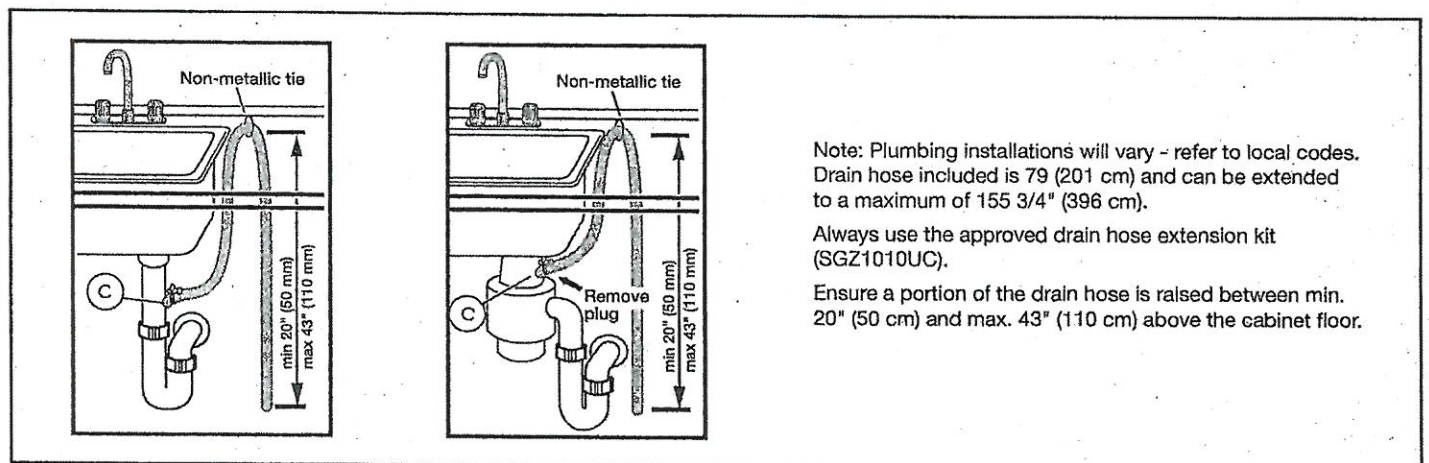
lot 32 March 29/21

# 24" Scoop Handle Dishwasher

300 Series DLX – Stainless Steel SHS863WD5N



## Installation Details



For help and assistance with Bosch accessories please visit: [www.bosch-eshop.com/eshop/bosch/us](http://www.bosch-eshop.com/eshop/bosch/us) or call 1-800-944-2904 Mon-Fri 5am to 6pm PST Sat 6am to 3pm PST

Notes: All height, width and depth dimensions are shown in inches. BSH reserves the absolute and unrestricted right to change product materials and specifications, at any time, without notice. Consult the product's installation instructions for final dimensional data and other details prior to making cutout. Applicable product warranty can be found in accompanying product literature or you may contact your account manager for further details.

Warranties: Bosch warrants that the Product is free from defects in materials and workmanship for a period of three hundred and sixty-five (365) days from the date of purchase. The foregoing timeline begins to run upon the date of purchase, and shall not be stalled, tolled, extended, or suspended, for any reason whatsoever. This Product is also warranted to be free from cosmetic defects in material and workmanship (such as scratches of stainless steel, paint/porcelain blemishes, chip, dents, or other damage) to the finish of the Product, for a period of thirty (30) days from the date of purchase or closing date for new construction. This cosmetic warranty excludes slight color variations due to inherent differences in painted and porcelain parts, as well as differences caused by kitchen lighting, product location, or other similar factors. This cosmetic warranty specifically excludes any display, floor, "As Is", or "B" stock appliances.

For more information on our entire line of products, go to [www.bosch-home.com/us](http://www.bosch-home.com/us) or call 1-800-944-2904

© BSH Home Appliances Corporation. All rights reserved. Bosch is a registered trademark of Robert Bosch GmbH.

05/17

Lot 32, April 14, 2021

**KitchenAid®**

**30" (76 cm) Freestanding Electric Range**

**PRODUCT MODEL NUMBERS**

KFED500E

**Electrical Connection:**

- This range is manufactured with the neutral terminal connected to the cabinet. Use a 3-wire, UL listed, 40- or 50-amp power supply cord (pigtail) (see the following Range Rating chart). If local codes do not permit ground through the neutral, use a 4-wire power supply cord rated at 250 volts, 40- or 50-amps and investigated for use with ranges.

Range Rating*		Specified Rating of Power Supply Cord Kit and Circuit Protection
120/240 Volts	120/208 Volts	Amps
8.8 – 16.5 KW	7.8 – 12.5 KW	40 or 50**
16.6 – 22.5 KW	12.6 – 18.5 KW	50

\* The NEC calculated load is less than the total connected load listed on the model/serial/rating plate.

\*\* If connecting to a 50-amp circuit, use a 50-amp rated cord with kit. For 50-amp rated cord kits, use kits that specify use with a nominal 13/8" (39.9 mm) diameter connection opening.

- A circuit breaker is recommended.
- The range can be connected directly to the circuit breaker box (or fuse disconnect) through flexible or nonmetallic sheathed, copper or aluminum cable. See the "Electrical Connection – U.S.A. Only" section.

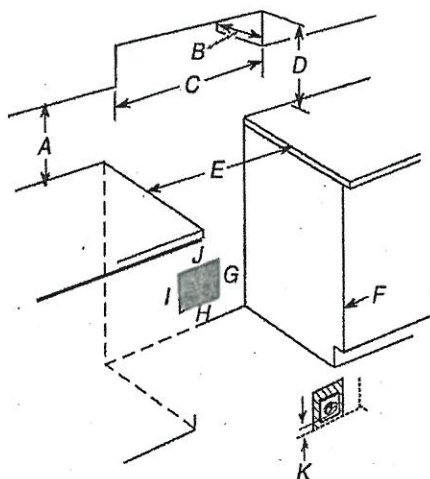
**CABINET OPENING DIMENSIONS**

Cabinet opening dimensions shown are for:

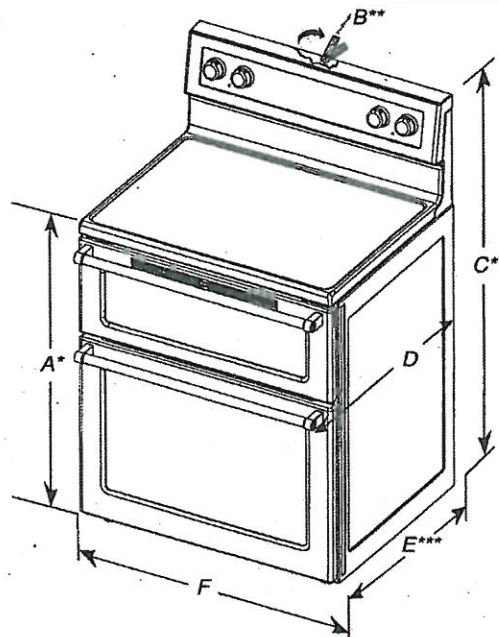
25" (63.5 cm) countertop depth,

24" (61 cm) base cabinet depth,

36" (91.4 cm) countertop height



**PRODUCT DIMENSIONS**



A. 35<sup>3</sup>/<sub>4</sub>" ± 1/<sub>8</sub>" (90.8 ± 0.3 cm) cooktop height (minimum) with leveling legs screwed all the way in\*

B. Model/serial/rating plates (located behind the control panel)\*\*

C. 47<sup>3</sup>/<sub>8</sub>" ± 1/<sub>8</sub>" (120.3 ± 0.3 cm) overall height (minimum) with leveling legs screwed all the way in\*

D. 28<sup>1</sup>/<sub>2</sub>" ± 1/<sub>4</sub>" (72.4 ± 0.6 cm) depth with handle

E. 26<sup>1</sup>/<sub>8</sub>" ± 1/<sub>8</sub>" (66.4 ± 0.3 cm)\*\*\*

F. 29<sup>15</sup>/<sub>16</sub>" ± 1/<sub>16</sub>" (76.0 ± 0.2 cm) width

\* Range can be raised approximately 1" (2.5 cm) by adjusting the leveling legs.

\*\* Model/serial/rating plates may be rotated up from behind the control panel for viewing from the front of the range.

\*\*\*Excludes handle. Dimension given is from wall to front of oven door and will vary based on electronic outlet receptacle installation.

A. 18" (45.7 cm) upper cabinet to countertop

B. 13" (33.0 cm) upper cabinet depth

C. 30" (76.2 cm) min. opening width

D. For minimum clearance to the top of the cooktop, see NOTE.

E. U.S.A.: 30" (76.2 cm) min. opening width  
Canada: 31" (78.7 cm) min. opening width

F. Cabinet door or hinge should not extend into cutout\*

G. 1<sup>1</sup>/<sub>2</sub>" (3.8 cm) min.

from right side of cabinet

H. 2" (5.1 cm) min. from floor

I. 7" (17.8 cm) min. from floor

J. 8" (20.3 cm) width

K. 3<sup>1</sup>/<sub>2</sub>" (8.9 cm) min. from floor

Proper positioning of outlet shown above.

\* Nothing located in shaded areas can extend more than 1<sup>1</sup>/<sub>2</sub>" (3.8 cm) from wall or range will not slide all the way back.

**NOTE:** 24" (61.0 cm) minimum when bottom of wood or metal cabinet is covered by not less than 1/<sub>4</sub>" (0.64 cm) flame retardant millboard covered with not less than No. 28 MSG sheet steel, 0.015" (0.4 mm) stainless steel, 0.024" (0.6 mm) aluminum or 0.020" (0.5 mm) copper.

30" (76.2 cm) minimum clearance between the top of the cooking platform and the bottom of an uncovered wood or metal cabinet.