



Lot: 79

Model: 50.05 A KNIGHTSWOOD

Project/Phase: Pine Valley Forevergreen / 1

APPLIANCES

Invoice	Qty.	Description
2669	1	APPLIANCE SPECIFICATIONS ATTACHED - SIGNED COPY
31Mar21 NoCat		

BASEMENT WINDOWS

Invoice	Qty.	Description
2605 72,675 10Mar21	4	BASEMENT WINDOWS - UPGRADE BASEMENT WINDOW SIZE TO 30 " X 24" - 10" FRAME

CERAMIC

Invoice	Qty.	Description
2669	1	MASTER ENSUITE: SHOWER NICHE [SHAMPOO SHELF] - COMPLETE WITH MATCHING MARBLE JAMBS ON 4 SIDES, STANDARD TILE, APPROX. 12 X 18 INSTALLED VERTICALLY - SEE PLAN FOR LOCATION
31Mar21 NoCat		

CONCRETE AND DRAIN

Invoice	Qty.	Description
2605 101,930 10Mar21	1	BACK FLOW PREVENTER VALVE

DRYWALL

Invoice	Qty.	Description
2669 72,690 31Mar21 **	1	DELETE KITCHEN BULKHEAD, IF POSSIBLE, SITE APPROVAL REQUIRED
2669 31Mar21 NoCat	1	GARAGE: INCREASED HEIGHT TO MAN DOOR FROM HOUSE TO GARAGE [32 X 94] TALL HEIGHT * WOOD FRAME - IF GRADE PERMITS
2669 31Mar21 NoCat	1	KITCHEN: INSTALL FRENCH DOORS + SIDE LIGHTS WITH WHITE FRAME + TRANSOM ABOVE IN LIEU OF STANDARD WINDOW Same Style as Model Home Lot 93 Breakfast Area
2669 31Mar21 NoCat	1	MASTER ENSUITE: SHOWER NICHE [SHAMPOO SHELF] - COMPLETE WITH MATCHING MARBLE JAMBS ON 4 SIDES, STANDARD TILE, APPROX. 12 X 18 INSTALLED VERTICALLY - SEE PLAN FOR LOCATION

ELECTRICAL

Invoice	Qty.	Description
2605 10Mar21 NoCat	1	OPTIONAL COLD CELLAR BELOW LOGGIA - SEE PLAN
2669 72,292 31Mar21	1	FRONT EXTERIOR: INSTALL ADDITIONAL EXTERIOR COACH LIGHT ON SAME SWITCH (BUILDERS STANDARD FIXTURE)
2669 72,291 31Mar21	2	FRONT EXTERIOR GARAGE: INSTALL EXTERIOR LED SOFFIT POT LIGHT - ABOVE GARAGE DOORS - SEE PLAN
2669 72,278 31Mar21	1	FRONT FOYER: ADDITIONAL INTERIOR SWITCH FOR POT LIGHTS ABOVE GARAGE
2669 72,291 31Mar21	3	FRONT EXTERIOR: INSTALL EXTERIOR LED SOFFIT POT LIGHT - SEE PLAN
2669 72,278 31Mar21	1	FRONT FOYER: ADDITIONAL INTERIOR SWITCH FOR EXTERIOR POT LIGHTS IN UPPER SOFFIT
2669 72,274 31Mar21	1	GARAGE: 220V WALL RECEPTACLE ON SEPARATE CIRCUIT - FOR ELECTRIC CAR
2669 72,281 31Mar21	1	GREAT ROOM: INTERIOR WALL OUTLET: ADDITIONAL 110V WALL INTERIOR RECEPTACLE ON EXISTING CIRCUIT FOR WALL MOUNTED TV - APPROX 64" A.F.F.
2669 72,307 31Mar21	1	KITCHEN: RELOCATE STANDARD CEILING MOUNT FIXTURE TO ABOVE KITCHEN ISLAND - SEE PLAN
2669 72,307 31Mar21	1	KITCHEN: ADDITIONAL CAPPED CEILING FIXTURE ON EXISTING SWITCH - INSTALL ABOVE KITCHEN ISLAND - SEE PLAN
2669 72,271 31Mar21	1	SERVERY: 110V WALL RECEPTACLE ON SEPARATE CIRCUIT - FOR WINE FRIDGE - SEE PLAN
2669 72,289 31Mar21	6	GREAT ROOM: 4" E/S LED INTERIOR POT LIGHT INCLUDED IN APS
2669 72,307 31Mar21	1	REAR EXTERIOR LOGGIA: INSTALL STANDARD CEILING LIGHT FIXTURE CENTERED ON CEILING OF LOGGIA ON EXISTING SWITCH - SEE PLAN

ELECTRICAL

Invoice	Qty.	Description
2669 72,282 31Mar21	1	KITCHEN: ADDITIONAL 220V RECEPTACLE ON A SEPARATE CIRCUIT - FOR BUILT-IN WALL OVEN - APPLIANCE NOT INCLUDED - DOES NOT INCLUDE BREAKER THAT IS TO BE INSTALLED BY LICENSED ELECTRICIAN AND ARRANGED BY HOMEOWNER AFTER CLOSING
2669 72,272 31Mar21	1	KITCHEN: 110V WALL RECEPTACLE ON SEPARATE CIRCUIT - FOR MICROWAVE - MICROWAVE NOT INCLUDED
2669 72,307 31Mar21	1	UPPER HALL: RELOCATE STANDARD CEILING MOUNT FIXTURE TO APPROX CENTER OVER MAIN STAIRS - SEE PLAN
2669 72,279 31Mar21	1	ENSUITE 2: SHOWER POT LIGHT: 6" RECESSED SHOWER POT LIGHT COMPLETE WITH SWITCH
2669 72,289 31Mar21	4	FOYER: 4" E/S LED INTERIOR POT LIGHT
2669 72,278 31Mar21	1	FOYER: ADDITIONAL INTERIOR SWITCH FOR POT LIGHTS
2669 72,289 31Mar21	3	LIBRARY: 4" E/S LED INTERIOR POT LIGHT - DELETE STANDARD LIGHT FIXTURE
2669 72,289 31Mar21	4	DINING ROOM: 4" E/S LED INTERIOR POT LIGHT
2669 72,278 31Mar21	1	DINING ROOM: ADDITIONAL INTERIOR SWITCH
2669 72,289 31Mar21	4	KITCHEN: 4" E/S LED INTERIOR POT LIGHT
2669 72,278 31Mar21	1	KITCHEN: ADDITIONAL INTERIOR SWITCH
2669 72,289 31Mar21	3	CABANA: 4" E/S LED INTERIOR POT LIGHT - DELETE STANDARD CEILING LIGHT FIXTURE
2669 72,289 31Mar21	1	POWDER ROOM AT MAIN HALL: 4" E/S LED INTERIOR POT LIGHT

ELECTRICAL

Invoice	Qty.	Description
2669 72,278 31Mar21	1	POWDER ROOM AT MAIN HALL: ADDITIONAL INTERIOR SWITCH
2669 72,289 31Mar21	1	POWDER ROOM AT GREAT ROOM: 4" E/S LED INTERIOR POT LIGHT - GROUND FLOOR - EACH
2669 72,278 31Mar21	1	POWDER ROOM AT GREAT ROOM: ADDITIONAL INTERIOR SWITCH
2669 72,289 31Mar21	1	MUDROOM: 4" E/S LED INTERIOR POT LIGHT - DELETE STANDARD CEILING LIGHT FIXTURE
2669 72,289 31Mar21	1	SERVERY: 4" E/S LED INTERIOR POT LIGHT - DELETE STANDARD CEILING FIXTURE
2669 72,291 31Mar21	1	LOGGIA: EXTERIOR LED SOFFIT POT LIGHT - EACH
2669 72,278 31Mar21	1	BREAKFAST: ADDITIONAL INTERIOR SWITCH FOR EXTERIOR POT LIGHT AT LOGGIA
2669 72,291 31Mar21	1	REAR EXTERIOR: EXTERIOR LED SOFFIT POT LIGHT - INSTALL UNDER SOFFIT AT MAIN FLOOR ROOF LINE OF LOGGIA - SEE PLAN
2669 72,278 31Mar21	1	BREAKFAST: ADDITIONAL INTERIOR SWITCH FOR EXTERIOR POT LIGHT
2669 72,289 31Mar21	1	MAIN HALL AT POWDER ROOM: 4" E/S LED INTERIOR POT LIGHT - DELETE STANDARD LIGHT FIXTURE
2669 72,278 31Mar21	1	MAIN HALL: ADDITIONAL INTERIOR SWITCH
2669 72,289 31Mar21	4	MAIN HALL: 4" E/S LED INTERIOR POT LIGHT
2669 72,278 31Mar21	1	BREAKFAST: ADDITIONAL INTERIOR SWITCH FOR POT LIGHT UNDER SOFFIT OF SECOND FLOOR ROOF LINE



CONSTRUCTION SUMMARY

Lot: 79
Model: 50.05 A KNIGHTSWOOD
Project/Phase: Pine Valley Forevergreen / 1

ELECTRICAL

Invoice	Qty.	Description
2669 72,291 31Mar21	1	REAR EXTERIOR: EXTERIOR LED SOFFIT POT LIGHT - INSTALL UNDER SOFFIT OF SECOND FLOOR ROOF LINE - SEE PLAN
2669 72,278 31Mar21	1	CABANA: ADDITIONAL INTERIOR SWITCH FOR SOFFIT LIGHT

EXTERIOR COLOURS

Invoice	Qty.	Description
2605 10Mar21 NoCat	1	EXTERIOR COLOUR PACKAGE : BR1

EXTERIOR DOORS

Invoice	Qty.	Description
2669 72,363 31Mar21	1	GARAGE: INCREASED HEIGHT TO MAN DOOR FROM HOUSE TO GARAGE [32 X 94] TALL HEIGHT * WOOD FRAME - IF GRADE PERMITS
2669 72,359 31Mar21	1	KITCHEN: INSTALL FRENCH DOORS + SIDE LIGHTS WITH WHITE FRAME + TRANSOM ABOVE IN LIEU OF STANDARD WINDOW (SAME STYLE AS MODEL HOME LOT 93 BREAKFAST ROOM)

FORMING

Invoice	Qty.	Description
2605 72,560 10Mar21	1	MODEL OPTIONS 50.04 - KITCHEN REAR - OPT. COVERED LOGGIA AS PER PLAN
2605 27,686 10Mar21	1	OPTIONAL COLD CELLAR BELOW LOGGIA - SEE PLAN

FRAMING

Invoice	Qty.	Description
2669 72,690 31Mar21	1	DELETE KITCHEN BULKHEAD, IF POSSIBLE, SITE APPROVAL REQUIRED
2669 72,631 31Mar21	1	MASTER ENSUITE: SHOWER NICHE [SHAMPOO SHELF] - COMPLETE WITH MATCHING MARBLE JAMBS ON 4 SIDES, STANDARD TILE, APPROX. 12 X 18 INSTALLED VERTICALLY - SEE PLAN FOR LOCATION
2669 31Mar21 NoCat	1	GARAGE: INCREASED HEIGHT TO MAN DOOR FROM HOUSE TO GARAGE [32 X 94] TALL HEIGHT * WOOD FRAME - IF GRADE PERMITS
2669 31Mar21 NoCat	1	KITCHEN: INSTALL FRENCH DOORS + SIDE LIGHTS WITH WHITE FRAME + TRANSOM ABOVE IN LIEU OF STANDARD WINDOW Same Style as Model Home Lot 93 in Breakfast Area

HVAC

Invoice	Qty.	Description
2669 72,690 31Mar21 **	1	DELETE KITCHEN BULKHEAD, IF POSSIBLE, SITE APPROVAL REQUIRED

INTERIOR TRIM AND DOORS

Invoice	Qty.	Description
2605 10Mar21 NoCat	1	OPTIONAL COLD CELLAR BELOW LOGGIA - SEE PLAN

KITCHEN AND BATH CABINETRY

Invoice	Qty.	Description
2669 72,690 31Mar21 **	1	DELETE KITCHEN BULKHEAD, IF POSSIBLE, SITE APPROVAL REQUIRED

MASONRY

Invoice	Qty.	Description
2669 31Mar21 NoCat	1	FYI - FRONT EXTERIOR: INSTALL ADDITIONAL EXTERIOR COACH LIGHT ON SAME SWITCH (BUILDERS STANDARD FIXTURE)
2669 31Mar21 NoCat	1	GARAGE: INCREASED HEIGHT TO MAN DOOR FROM HOUSE TO GARAGE [32 X 94] TALL HEIGHT * WOOD FRAME - IF GRADE PERMITS
2669 31Mar21 NoCat	1	KITCHEN: INSTALL FRENCH DOORS + SIDE LIGHTS WITH WHITE FRAME + TRANSOM ABOVE IN LIEU OF STANDARD WINDOW Same Style as Model Lot 93 Breakfast Area



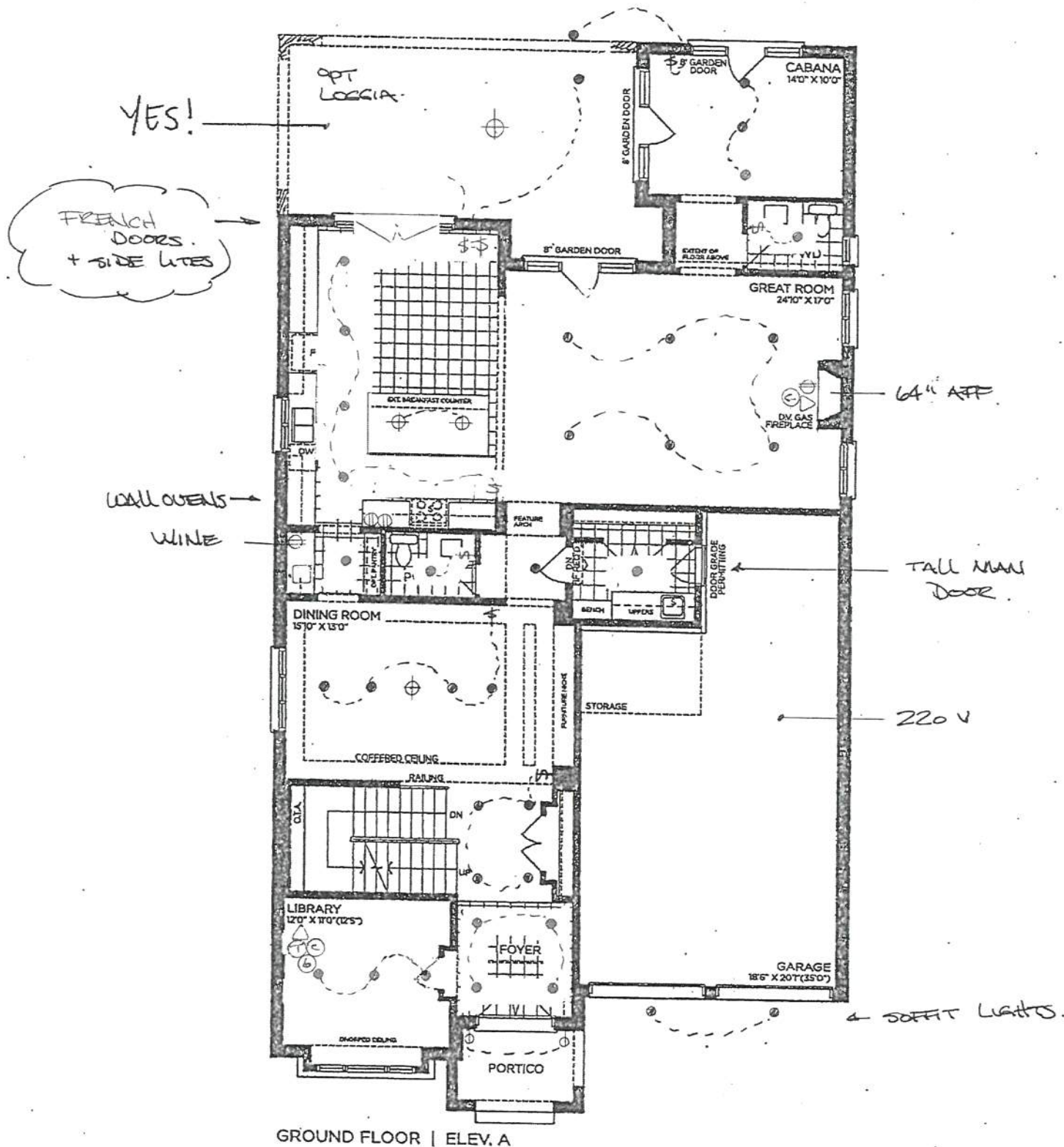
SCHEDULE 'F'

PV-79 *62*
March 9, 2021

PV-79.
March 30 2021 *attach*

The Knightswood 50' SERIES

→ Elevation A • 4,445 sq.ft.
4,475 sq.ft. Opt. Elevator / 4,575 sq.ft. Opt. Service Stairs
Elevation B • 4,440 sq.ft.
4,475 sq.ft. Opt. Elevator / 4,575 sq.ft. Opt. Service Stairs
Elevation C • 4,525 sq.ft.
4,560 sq.ft. Opt. Elevator / 4,660 sq.ft. Opt. Service Stairs



GROUND FLOOR | ELEV. A

VENDOR

PURCHASER

PURCHASER

<i>[Signature]</i>

GOLDPARK
WORTH MORE™

Prices, figures, illustrations, sizes, features and finishes are subject to change without notice. Areas and dimensions are approximate and actual usable floor space may vary from the stated area. Layout may be reverse of the unit purchased. E. & O.E. 5005



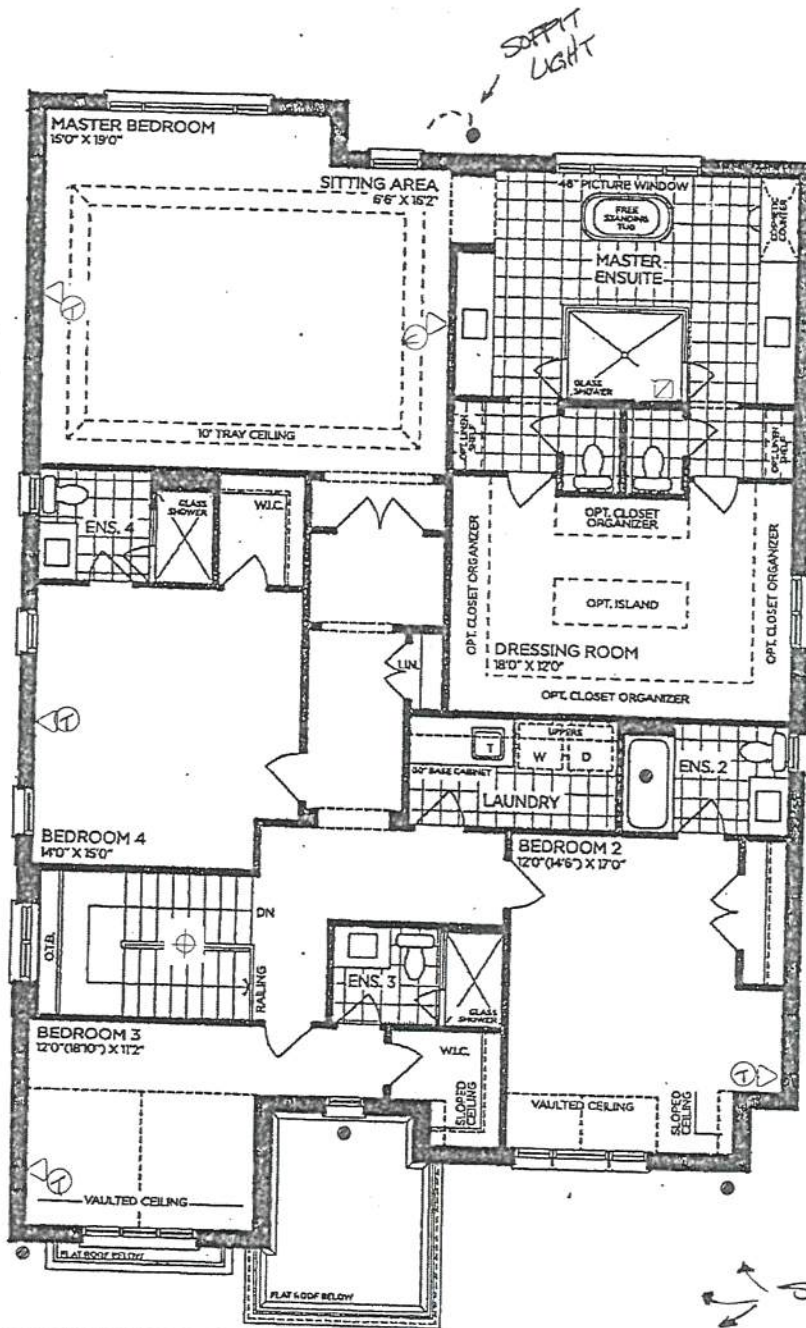
PV-79 (68)
March 9, 2021

PV-79
March 30 2021 attach

SCHEDULE 'F'

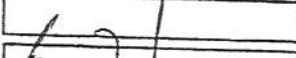
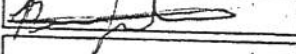

The Knightswood 50' SERIES

→ Elevation A • 4,445 sq.ft.
4,475 sq.ft. Opt. Elevator / 4,575 sq.ft. Opt. Service Stairs
Elevation B • 4,440 sq.ft.
4,475 sq.ft. Opt. Elevator / 4,575 sq.ft. Opt. Service Stairs
Elevation C • 4,525 sq.ft.
4,560 sq.ft. Opt. Elevator / 4,660 sq.ft. Opt. Service Stairs



SECOND FLOOR | ELEV. A

SOFFIT LIGHTS x 3
at Front

VENDOR 
PURCHASER 
PURCHASER 

GOLDPARK
WORTH MORE™

Prices, figures, illustrations, sizes, features and finishes are subject to change without notice. Areas and dimensions are approximate and actual usable floor space may vary from the stated area. Layout may be reverse of the unit purchased. E. & O.E. 5005

SCHEDULE 'F'



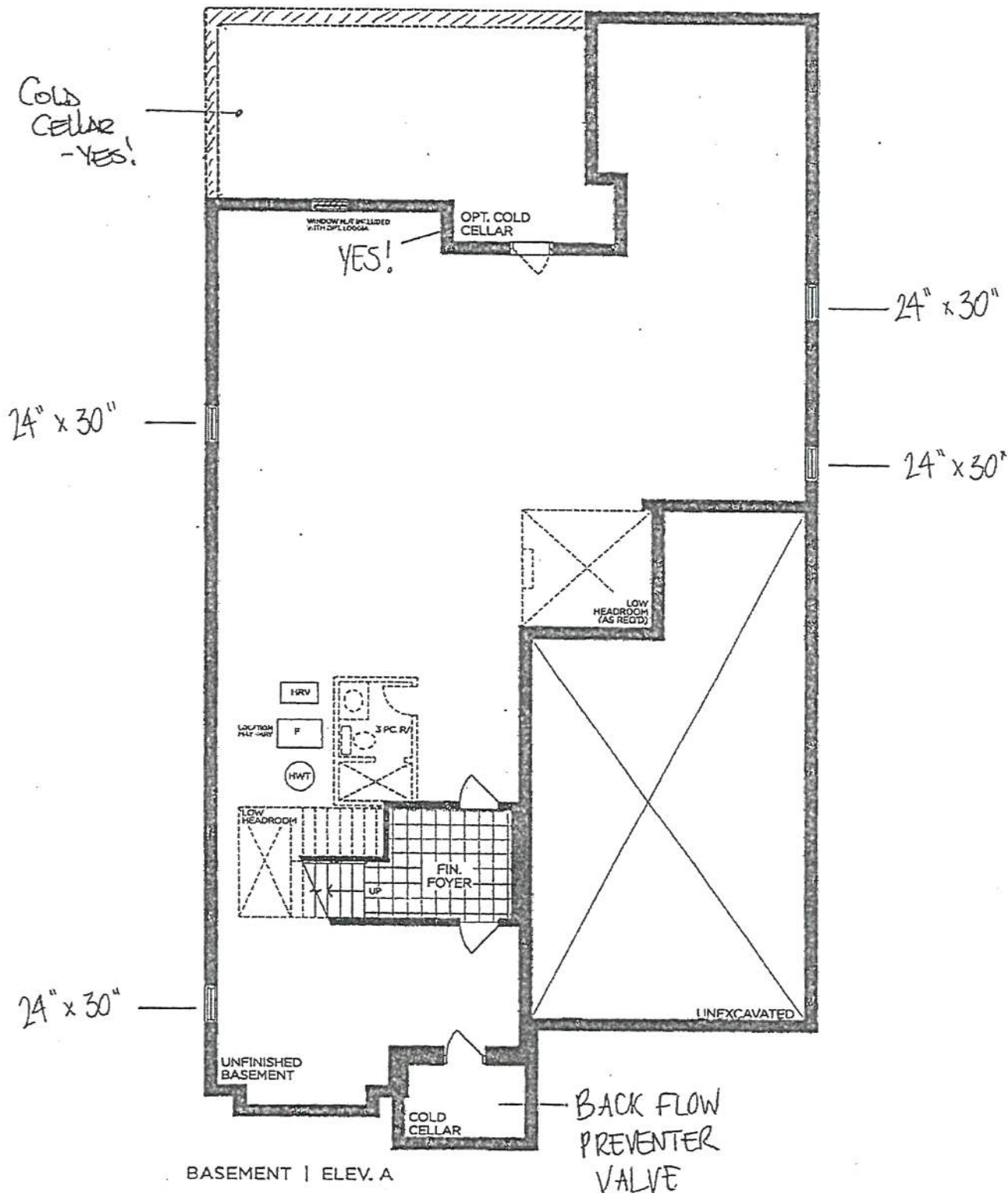
PV-79 ^{B2}
March 9, 2021

PV-79
March 30, 2021 ^{attach}

The Knightswood

50' SERIES

→ Elevation A • 4,445 sq.ft.
4,475 sq.ft. Opt. Elevator / 4,575 sq.ft. Opt. Service Stairs
Elevation B • 4,440 sq.ft.
4,475 sq.ft. Opt. Elevator / 4,575 sq.ft. Opt. Service Stairs
Elevation C • 4,525 sq.ft.
4,560 sq.ft. Opt. Elevator / 4,660 sq.ft. Opt. Service Stairs



VENDOR _____
PURCHASER [Signature]
PURCHASER _____

GOLDPARK
WORTH MORE™

Prices, figures, illustrations, sizes, features and finishes are subject to change without notice. Areas and dimensions are approximate and actual usable floor space may vary from the stated area. Layout may be reverse of the unit purchased. E. & O.E. 5005



SCHEDULE 'F'

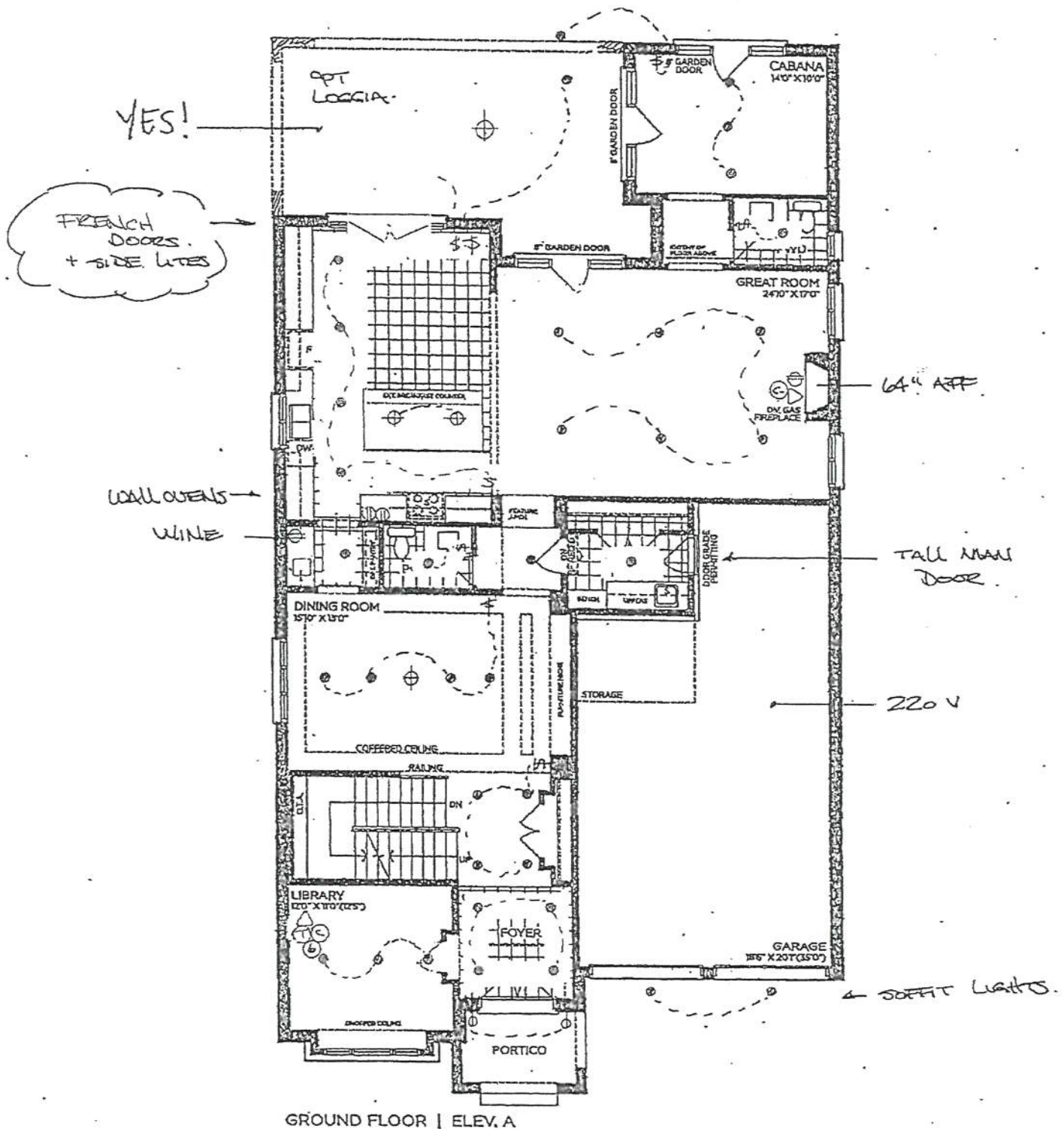
PV-79 (60)
March 9, 2021

PV-79.
March 30 2021 (60)

The Knightswood

50' SERIES

→ Elevation A • 4,445 sq.ft.
4,475 sq.ft. Opt. Elevator / 4,575 sq.ft. Opt. Service Stairs
Elevation B • 4,440 sq.ft.
4,475 sq.ft. Opt. Elevator / 4,575 sq.ft. Opt. Service Stairs
Elevation C • 4,525 sq.ft.
4,560 sq.ft. Opt. Elevator / 4,660 sq.ft. Opt. Service Stairs



GROUND FLOOR | ELEV. A

VENDOR

PURCHASER

PURCHASER

GOLDPARK
WORTH MORE™

Prices, figures, illustrations, sizes, features and finishes are subject to change without notice. Areas and dimensions are approximate and actual usable floor space may vary from the stated area. Layout may be reverse of the unit purchased. E. & O.E. 5005

SCHEDULE 'F'



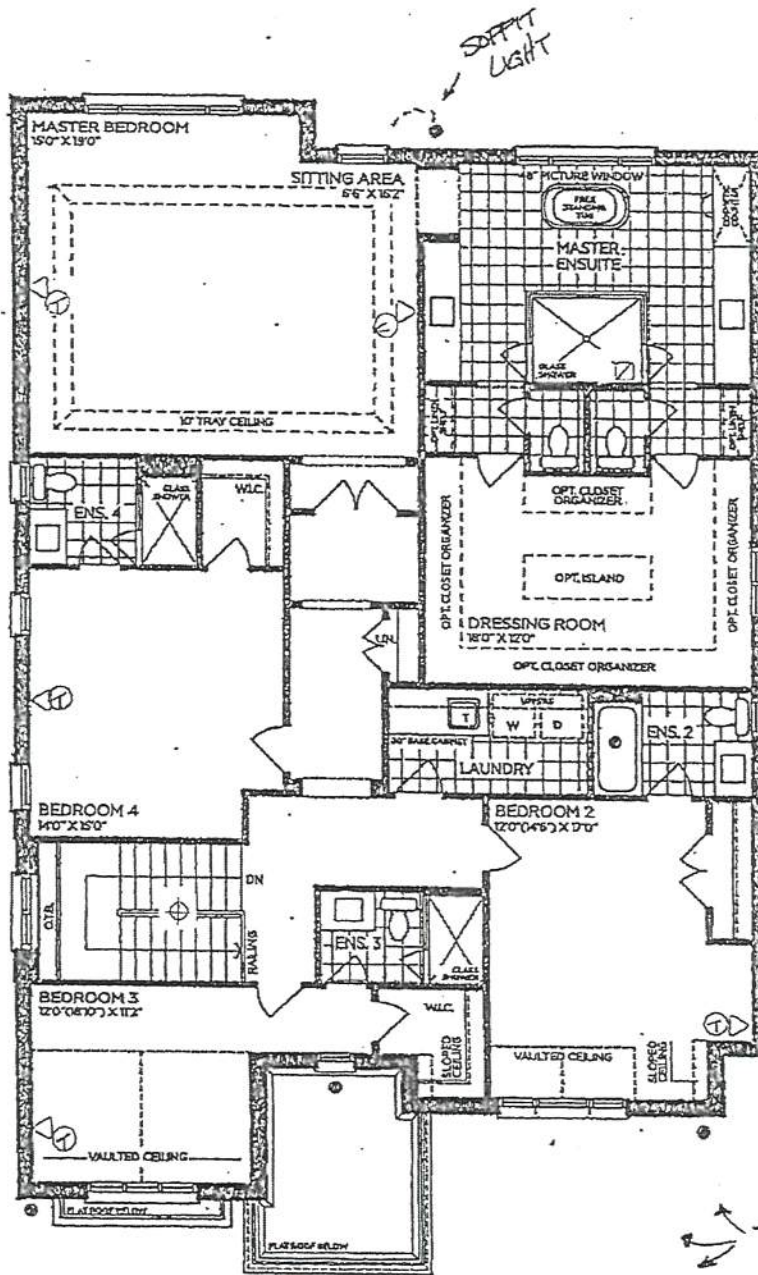
PV-79 (68)
March 9, 2021

PV-79
March 30 2021

The Knightswood

50' SERIES

→ Elevation A • 4,445 sq.ft.
4,475 sq.ft. Opt. Elevator / 4,575 sq.ft. Opt. Service Stairs
Elevation B • 4,440 sq.ft.
4,475 sq.ft. Opt. Elevator / 4,575 sq.ft. Opt. Service Stairs
Elevation C • 4,525 sq.ft.
4,560 sq.ft. Opt. Elevator / 4,660 sq.ft. Opt. Service Stairs



SECOND FLOOR | ELEV. A

VENDOR

PURCHASER

PURCHASER

GOLDPARK
WORTH MORE

Prices, figures, illustrations, sizes, features and finishes are subject to change without notice. Areas and dimensions are approximate and actual usable floor space may vary from the stated area. Layout may be reverse of the unit purchased. E & O.E. 5005

SCHEDULE 'F'

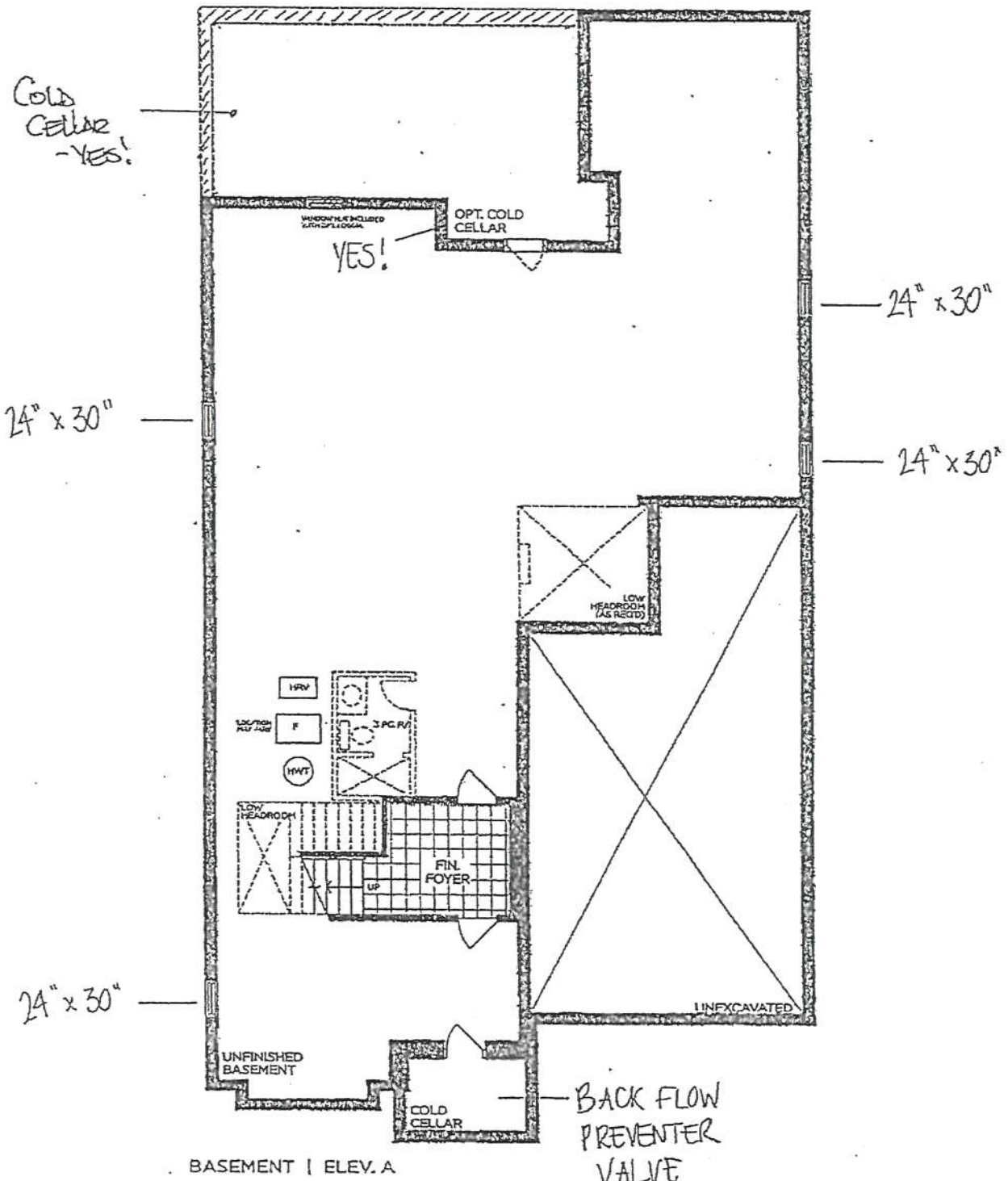


PV-79 B2
March 9, 2021

PV-79 BL
March 30, 2021

The Knightswood 50' SERIES


→ Elevation A • 4,445 sq.ft.
4,475 sq.ft. Opt. Elevator / 4,575 sq.ft. Opt. Service Stairs
Elevation B • 4,440 sq.ft.
4,475 sq.ft. Opt. Elevator / 4,575 sq.ft. Opt. Service Stairs
Elevation C • 4,525 sq.ft.
4,560 sq.ft. Opt. Elevator / 4,660 sq.ft. Opt. Service Stairs



VENDOR [Signature]
PURCHASER [Signature]
PURCHASER [Signature]

GOLDPARK
WORTH MORE

Prices, figures, illustrations, sizes, features and finishes are subject to change without notice. Areas and dimensions are approximate and actual usable floor space may vary from the stated area. Layout may be reverse of the unit purchased. E. & O.E. 5005

PV-79 
March 29, 2021

KitchenAid®

FOR THE WAY IT'S MADE.®

Side By Side Built-In Refrigerator

PRODUCT MODEL NUMBERS

KBSD602E KBSD606E KBSD608E KBSN602E KBSN608E
KBSD612E KBSD618E

Electrical: A 115 volt, 60 Hz., AC only, 15- or 20-amp fused, grounded electrical supply is required. It is recommended that a separate circuit serving only your refrigerator be provided. Use an outlet that cannot be turned off by a switch. Do not use an extension cord.

Water Pressure: A cold water supply with water pressure between 30 and 120 psi (207 and 827 kPa) is required to operate the water dispenser and ice maker. If you have questions about your water pressure, call a licensed, qualified plumber.

Reverse Osmosis Water Supply:

IMPORTANT: The pressure of the water supply coming out of a reverse osmosis system going to the water inlet valve of the refrigerator needs to be between 30 and 120 psi (207 and 827 kPa).

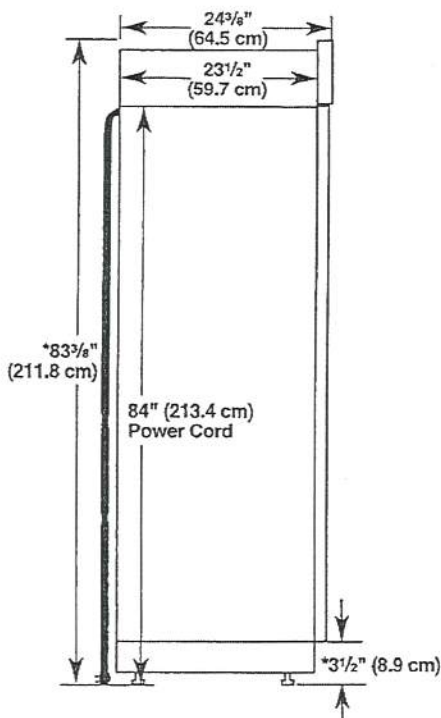
IMPORTANT:

- It is recommended that you do not install the refrigerator near an oven, radiator, or other heat source.
- Do not install in a location where the temperature will fall below 55°F (13°C).
- Floor must support the refrigerator weight, more than 600 lbs (272 kg), door panels and contents of the refrigerator.

PRODUCT DIMENSIONS

- The depth from the front of the top grille to the back of the refrigerator cabinet is 5 $\frac{3}{8}$ " (64.5 cm).
- The power cord is 84" (213 cm) long.
- Height dimensions are shown with leveling legs extended $\frac{1}{8}$ " (3 mm) below the rollers.

SIDE VIEW



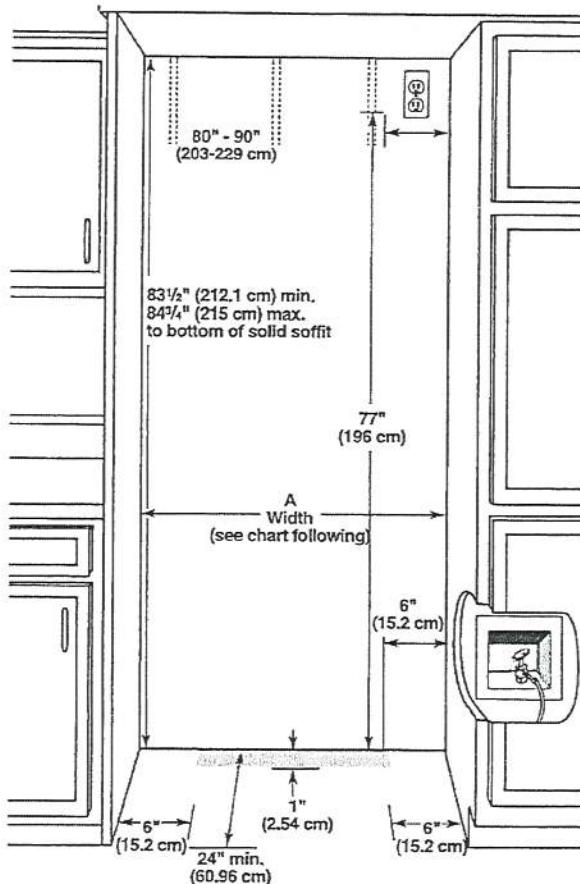
*When leveling legs are fully extended to 1 $\frac{1}{4}$ " (3.2 cm) below rollers, add 1 $\frac{1}{8}$ " (2.9 cm) to the height dimensions.

Because Whirlpool Corporation policy includes a continuous commitment to improve our products, we reserve the right to change materials and specifications without notice.

OPENING DIMENSIONS


To avoid tipping during use, the solid soffit must be within 1" (2.5 cm) maximum above the refrigerator. If the solid soffit is higher than 1" (2.5 cm) or one is not available, then the refrigerator must be braced. If the anti-tip boards are needed, they must be attached to the rear wall studs 80" to 90" (203 cm to 229 cm) above the floor. See "Install Anti-Tip Boards" for more information.

NOTE: A clearance of $\frac{1}{2}$ " (1.3 cm) above the top grille must be maintained in order for the top grille to be removed.

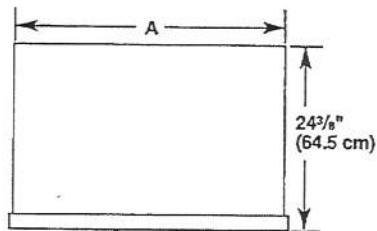


Model	Width A (as shown above)	Dimension B (as shown above)
36	35 $\frac{1}{2}$ " to 35 $\frac{3}{4}$ " (90.2 cm to 90.8 cm)	4" (10.2 cm)
42	41 $\frac{1}{2}$ " to 41 $\frac{3}{4}$ " (105.4 cm to 106.1 cm)	7 $\frac{1}{2}$ " (19.1 cm)
48	47 $\frac{1}{2}$ " to 47 $\frac{3}{4}$ " (120.7 cm to 121.3 cm)	13 $\frac{1}{2}$ " (34.3 cm)

NOTE: Flooring under refrigerator must be at same level as the room. Face of cabinetry must be plumb.

PV-79 
 March 29, 2021

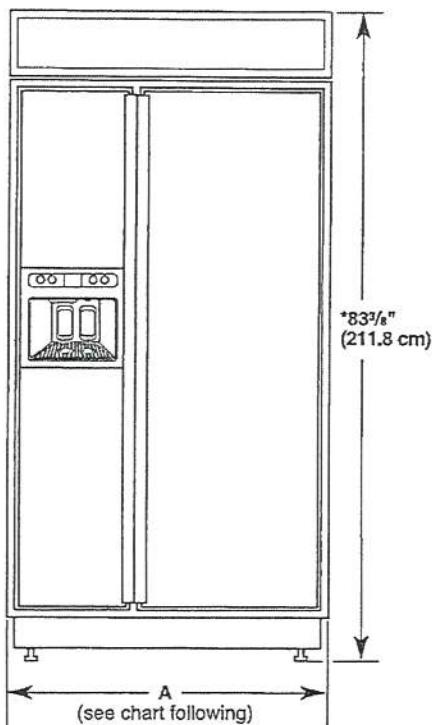
TOP VIEW



Model	Width A
36	35" (88.9 cm)
42	41" (104.1 cm)
48	47" (119.4 cm)

FRONT VIEW

- Width dimensions were measured from trim edge to trim edge.
- Height dimensions are shown with leveling legs extended 1/8" (3 mm) below the rollers.



Model	Width A (Trim edge to trim edge)
36	36 1/2" (92.3 cm)
42	42 1/2" (107.5 cm)
48	48 1/2" (122.8 cm)

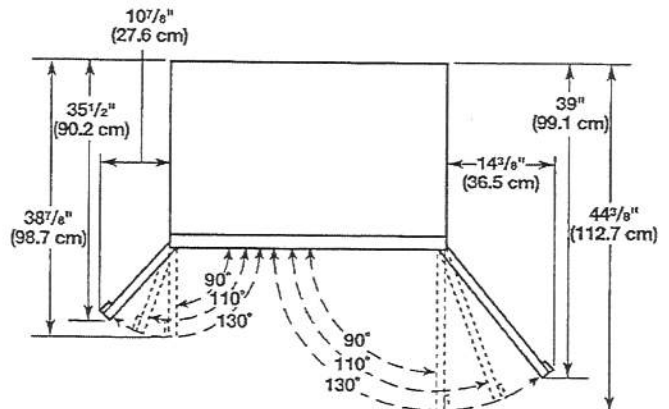
*When leveling legs are fully extended to 1 1/4" (3.2 cm) below rollers, add 1 1/8" (2.9 cm) to the height dimensions.

DOOR SWING DIMENSIONS

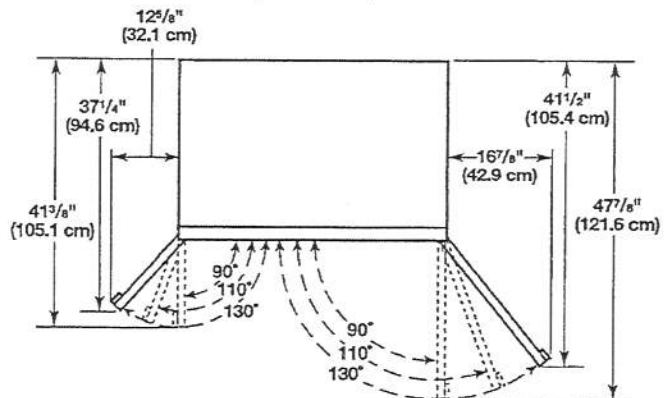
The location must permit both doors to open to a minimum of 90°. Allow 5" (12.7 cm) minimum space between the side of the refrigerator and a corner wall.
 NOTE: More clearance may be required if you are using overlay panels, custom handles, or extended handles on a Classic model.

To adjust the door swings, see "Adjust Doors."

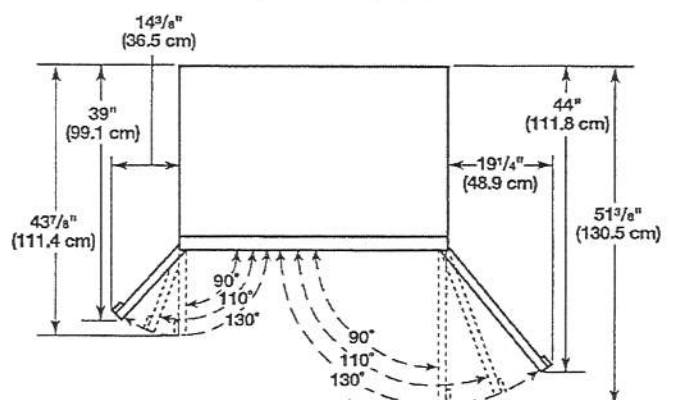
36" (91.4 cm) Models



42" (106.7 cm) Models



48" (121.9 cm) Models



PV-79 ○ B2
March 29, 2021

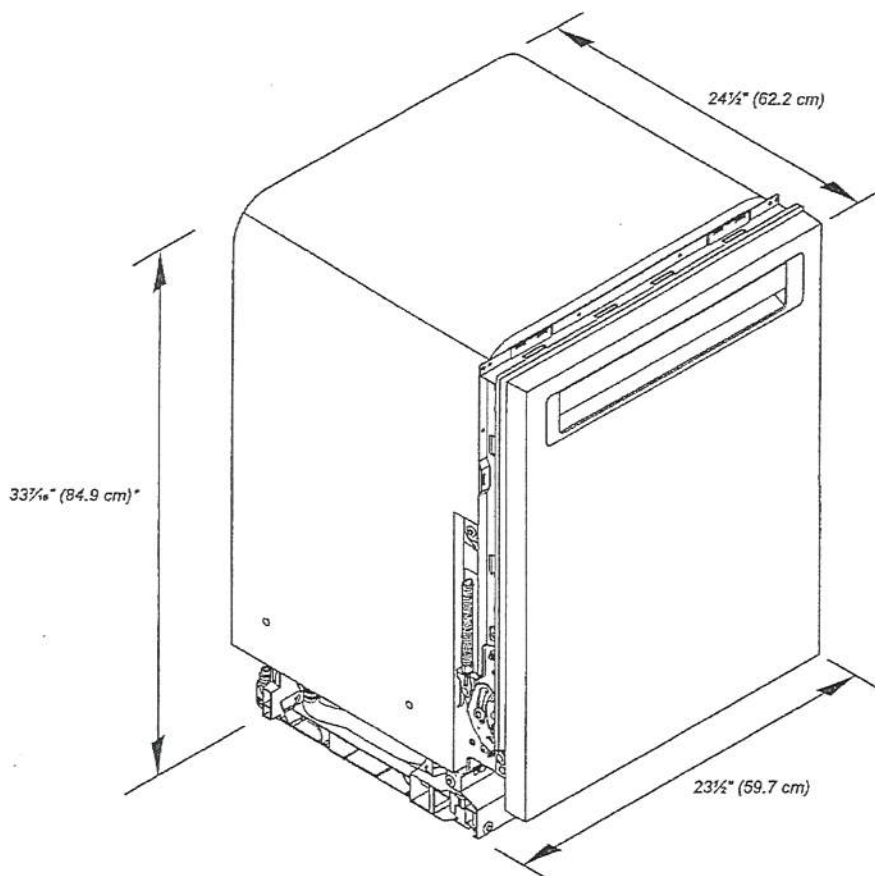
KitchenAid®

24" Dishwasher

DETAILED PLANNING DIMENSIONS GUIDE

Applies to all model numbers starting with;
KDFE104K, KDFE204K, KDTE204K, KDTE204LPA, KDFM404K,
KDTM404K, KDPM604K, KDTM604K, KDPM704K, KDTM704K,
KDTM704LPA, KDPM804K, KDTM804K

PRODUCT DIMENSIONS



*Dishwasher can be raised 1 1/16" (3.7 cm) with feet fully extended.

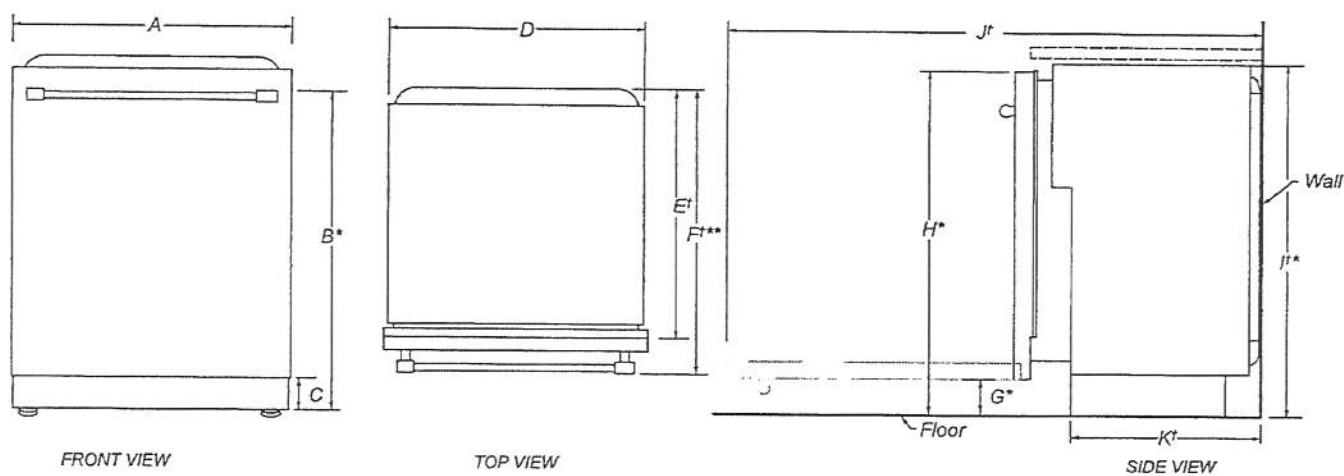
Because Whirlpool Corporation policy includes a continuous commitment to improve our products, we reserve the right to change materials and specifications without notice.

Dimensions are for planning purposes only. For complete details, see Installation Instructions packed with product. Specifications subject to change without notice.

PV-79 ○ ○
 March 29, 2021

KitchenAid® 24" Dishwasher DETAILED PLANNING DIMENSIONS GUIDE

PRODUCT DIMENSIONS (CONTD.)



	DESCRIPTION	DIMENSIONS
A	Width of door	23½" (59.7 cm)
B*	Height to top of handle	30⅜" (78.3 cm)
C	Height of adjustable toe kick	3⅝" (8.4 cm) - min. 4⅞" (11.8 cm) - max.
D	Width of recessed dishwasher	22⅝" (57.4 cm)
E'	Depth without door	22⅝" (57.5 cm)
F**	Depth with Towel Bar Handle	26⅞" (68.3 cm)
	Depth with Pocket Handle	24½" (62.6 cm)
	Depth of Panel-Ready Models	24" (61.0 cm)
G*	Height to bottom of door (min.)	3⅝" (8.4 cm)
H*	Height to top of door (min.)	33⅞" (84.9 cm)
I*	Height of recessed dishwasher (min.)	33⅝" (85.4 cm)
J'	Depth with door fully open (min.)	50⅞" (127.4 cm)
K'	Depth with toe kick (min.)	20⅜" (52.9 cm)

†Insulation blanket thickness adds up to 11/16" (1.8 cm) but can crush up to 1/8" (0.3 cm).
 *Dishwasher can be raised 1⅞" (3.7 cm) with feet fully extended.
 **For panel-ready models, dishwasher depth is 24" (61.0 cm), not including the 3/4" (1.9 cm) custom door panel.

Because Whirlpool Corporation policy includes a continuous commitment to improve our products, we reserve the right to change materials and specifications without notice.
 Dimensions are for planning purposes only. For complete details, see Installation Instructions packed with product. Specifications subject to change without notice.

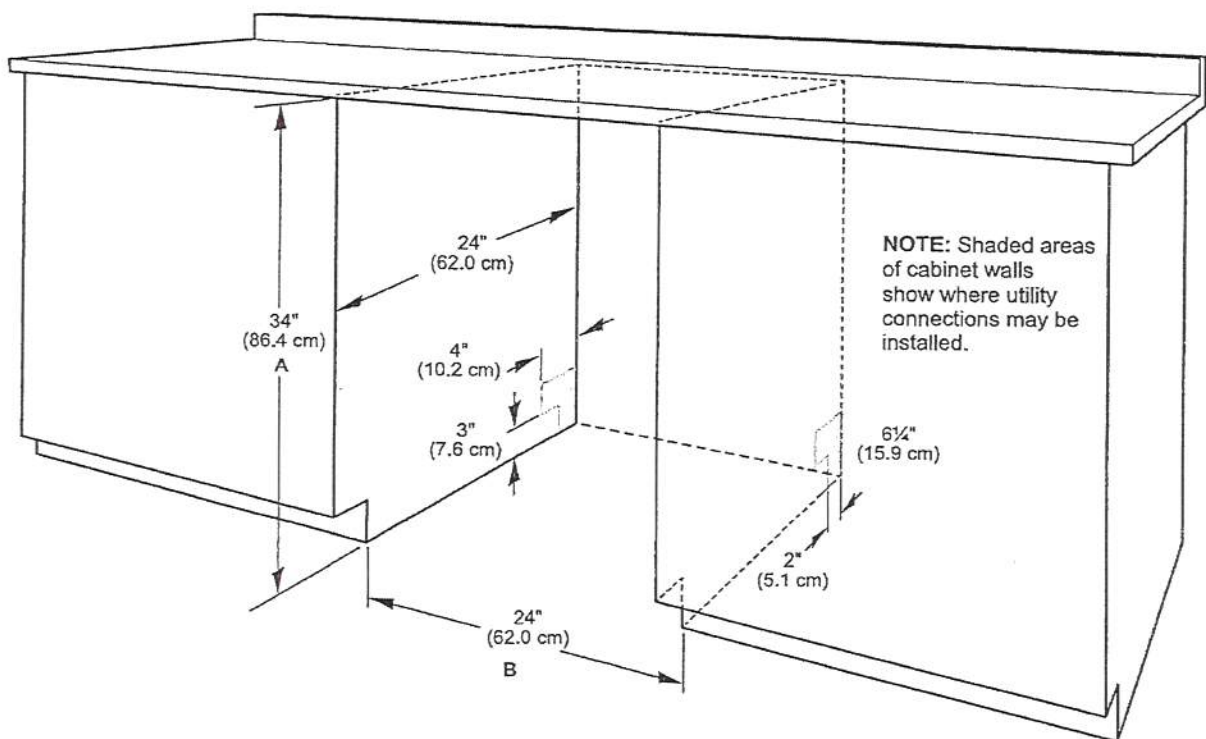
PV-79 ○ 62
March 29, 2021

KitchenAid® 24" Dishwasher

DETAILED PLANNING DIMENSIONS GUIDE

OPENING/CLEARANCE DIMENSIONS

IMPORTANT: Check that all surfaces have no protrusions that would prohibit dishwasher installation.



A. Measured from the lowest point on the underside of the countertop. May be reduced to 33 1/2" (85.1 cm) by removing the wheels and perforated area of insulation (blanket) on dishwasher.

B. Minimum, measured from narrowest point of opening.

NOTE: Corner locations require a 2" (5.1 cm) minimum clearance between the side of the dishwasher door and the wall or cabinet.

Because Whirlpool Corporation policy includes a continuous commitment to improve our products, we reserve the right to change materials and specifications without notice.

Dimensions are for planning purposes only. For complete details, see Installation Instructions packed with product. Specifications subject to change without notice.

PV-79

March 29, 2021

KitchenAid® 30" (76.2 CM) AND 36" (91.4 CM) ELECTRIC INDUCTION COOKTOP

PRODUCT MODEL NUMBERS

KICU509X

KICU569X

ELECTRICAL REQUIREMENTS:

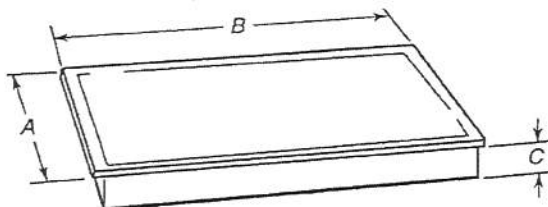
Before You Make the Electrical Connection:

To properly install your cooktop, you must determine the type of electrical connection you will be using and follow the instructions provided for it here.

- A 4-wire or 3-wire, single phase, 240 volt, 60 Hz., AC only electrical supply is required on a separate, 50-amp circuit (36" [91.4 cm] models) or 40-amp circuit (30" [76.2 cm] models), fused on both sides of the line.
 - The cooktop should be connected directly to the junction box through flexible, armored or nonmetallic sheathed, copper cable. The flexible, armored cable extending from the fuse box or circuit breaker box should be connected directly to the junction box.
 - Locate the junction box to allow as much slack as possible between the junction box and the cooktop so that the cooktop can be moved if servicing becomes necessary in the future.
 - Do not cut the conduit. The length of conduit provided is for serviceability of the cooktop.
 - A UL listed or CSA approved conduit connector must be provided at each end of the power supply cable (at the cooktop and at the junction box). A listed conduit connector is already provided at the cooktop.
 - If the house has aluminum wiring, follow the procedure below:
 1. Connect a section of solid copper wire to the pigtail leads.
 2. Connect the aluminum wiring to the added section of copper wire using special connectors and/or tools designed and UL listed for joining copper to aluminum.
- Follow the electrical connector manufacturer's recommended procedure. Aluminum/copper connection must conform with local codes and industry accepted wiring practices.

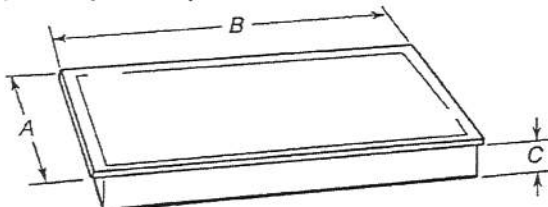
PRODUCT DIMENSIONS

30" (76.2 cm) Cooktop



Model JIC4430	Model KICU509
A. 21 $\frac{1}{8}$ " (54.1 cm)	A. 21 $\frac{1}{8}$ " (54.1 cm)
B. 30 $\frac{3}{8}$ " (77.0 cm)	B. 30 $\frac{3}{8}$ " (78.2 cm)
C. 3 $\frac{1}{8}$ " (8.0 cm)	C. 3 $\frac{1}{8}$ " (8.0 cm)

36" (91.4 cm) Cooktop

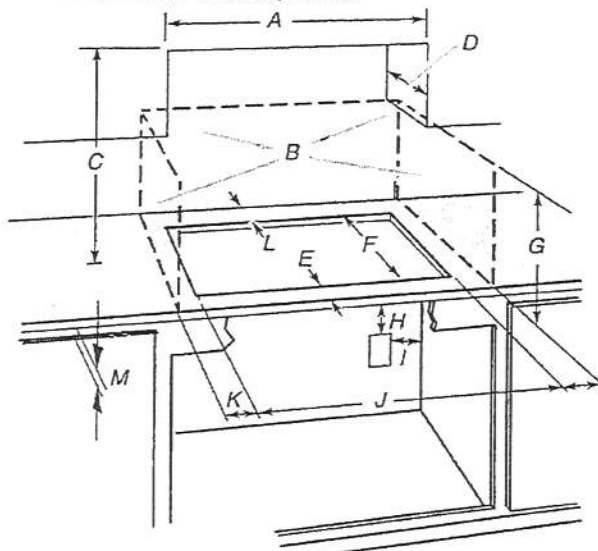


Models JIC4536 and KICU569

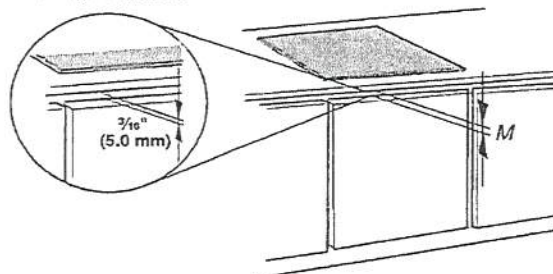
- A. 21 $\frac{1}{8}$ " (54.1 cm)
- B. 36 $\frac{3}{8}$ " (92.0 cm)
- C. 3 $\frac{1}{8}$ " (8.0 cm)

CABINET DIMENSIONS

IMPORTANT: If installing a range hood or microwave hood combination above the range, follow the range hood or microwave hood combination installation instructions for dimensional clearances above the cooktop surface.





- A. 29 $\frac{1}{2}$ " (75.0 cm) on 30" (76.2 cm) models
33 $\frac{1}{8}$ " (84.0 cm) on 36" (91.4 cm) models
- B. Combustible area above countertop (shown by dashed box above)
- C. 30" (76.2 cm) minimum clearance between top of cooktop platform and bottom of uncovered wood or metal cabinet (24" [61 cm] minimum clearance if bottom of wood or metal cabinet is covered by not less than $\frac{1}{4}$ " [0.6 cm] flame retardant millboard covered with not less than No. 28 MSG sheet steel, 0.015" [0.04 cm] stainless steel, or 0.024" [0.06 cm] aluminum or 0.020" [0.05 cm] copper)
- D. 13" (33.0 cm) recommended upper cabinet depth
- E. 2" (5.1 cm)
- F. 19 $\frac{5}{8}$ " (49.0 cm)
- G. 18" (45.7 cm) minimum clearance from upper cabinet to countertop within minimum horizontal clearances to cooktop
- H. Junction box or outlet; 12" (30.5 cm) minimum from bottom of countertop
- I. Junction box or outlet; 10" (25.4 cm) from right-hand side of cabinet
- J. 29 $\frac{1}{2}$ " (75.0 cm) on 30" (76.2 cm) models
33 $\frac{1}{8}$ " (84.0 cm) on 36" (91.4 cm) models
- K. 1" (2.5 cm) minimum distance to nearest left and right side combustible surface above cooktop
- L. 1" (2.5 cm) minimum clearance between back wall and countertop
- M. **IMPORTANT:** For proper ventilation, provide a vent of $\frac{3}{16}$ " (5 mm) under the countertop, in the front of the cabinet. The ventilation opening is to extend the full length of the cooktop cutout. See the following illustration.



NOTES: After you make the countertop cutout, some installations may require notching down the base cabinet side walls to clear the cooktop base. To avoid this modification, use a base cabinet with sidewalls wider than the cutout.

If cabinet has a drawer, a 5 $\frac{1}{8}$ " (13 cm) depth clearance from the countertop to the top of the drawer (or other obstruction) in base cabinet is required.

PV-79  
March 29, 2021

KitchenAid®

FOR THE WAY IT'S MADE.™

36" and 42" (91.4 cm and 106.7 cm) Island Canopy Range Hood

PRODUCT MODEL NUMBERS

KVIB606DSS

KVIB602DSS

KVIB606DBS

Electrical: A 120 volt, 60 Hz., AC only, 15-amp, fused electrical circuit is required.

VENTING METHODS

This canopy range hood is factory set for venting through the roof or through the wall.

A 6" (15.2 cm) round vent system is needed for installation (not included). The hood exhaust opening is 6" (15.2 cm) round.

NOTE: Flexible vent is not recommended. Flexible vent creates back pressure and air turbulence that greatly reduce performance.

Vent system can terminate either through the roof or wall. To vent through a wall, a 90° elbow is needed.

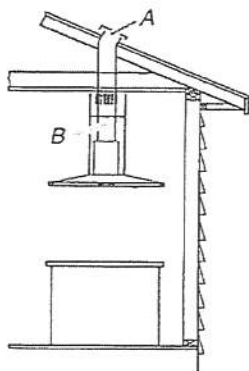
Rear Discharge

A 90° elbow may be installed immediately above the hood.

For Non-Vented (Recirculating) Installations

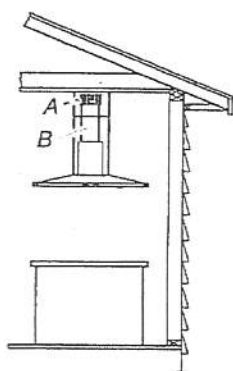
If it is not possible to vent cooking fumes and vapors to the outside, the hood can be used in the non-vented (recirculating) version, using a Recirculation Kit (which includes charcoal filters and a deflector). To order, see the "Assistance or Service" section.

Roof Venting



A. Roof cap
B. 6" (15.2 cm) round vent

Non-Vented (Recirculating)



A. Deflector
B. 6" (15.2 cm) round vent

Calculating Vent System Length

To calculate the length of the system you need, add the equivalent feet (meters) for each vent piece used in the system.

Vent System

Vent Piece 6" (15.2 cm) Round

45° elbow 2.5 ft (0.8 m)

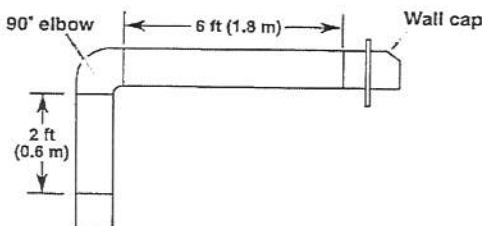


90° elbow 5.0 ft (1.5 m)



Maximum equivalent vent length is 35 ft (10.7 m).

Example Vent System



The following example falls within the maximum recommended vent length of 35 ft (10.7 m).

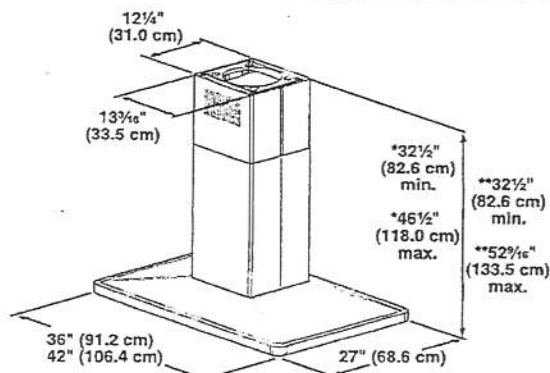
1 - 90° elbow = 5.0 ft (1.5 m)

1 - wall cap = 0.0 ft (0.0 m)

8 ft (2.4 m) straight = 8.0 ft (2.4 m)



Length of system = 13.0 ft (3.9 m)

PRODUCT DIMENSIONS

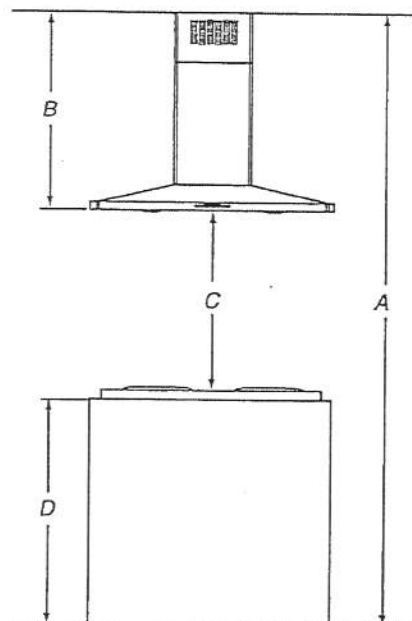


*Vented installations only

**Non-vented (recirculating) installations only

PV-79  
March 29, 2021

INSTALLATION DIMENSIONS



- A. Ceiling height
B. Hood height from ceiling to bottom of the range hood: $A - C - D = B$
C. 24" (61.0 cm) minimum to 36" (91.4 cm) maximum suggested hood height
D. Countertop height


IMPORTANT:

Minimum distance "C": 24" (61.0 cm) from electric cooking surface.
Minimum distance "C": 27" (68.6 cm) from gas cooking surface.
Suggested maximum distance "C": 36" (91.4 cm)

The chimneys can be adjusted for different ceiling heights. See the following chart.

Vented Installations		
	Min. ceiling height	Max. ceiling height
Electric cooking surface	7' 9" (2.36 m)	9' 10" (3.0 m)
Gas cooking surface	8' (2.44 m)	9' 10" (3.0 m)
Non-vented (recirculating) Installations		
	Min. ceiling height	Max. ceiling height
Electric cooking surface	7' 9" (2.36 m)	10' 4" (3.15 m)
Gas cooking surface	8' (2.44 m)	10' 4" (3.15 m)

***NOTE:** The range hood chimneys are adjustable and designed to meet varying ceiling or soffit heights depending on the distance "X" between the bottom of the range hood and the cooking surface. For higher ceilings, a Chimney Extension Kit is available from your dealer or an authorized parts distributor. The chimney extension replaces the chimney shipped with the range hood. To order, see the "Assistance or Service" section.

PV-79 
 March 29, 2011

KitchenAid® 27" (68.6 cm) and 30" (76.2 cm) Electric Built-In Microwave/Oven Combination

PRODUCT MODEL NUMBERS

KEMS309E KOCE500E KOCE507E

ELECTRICAL CONNECTION

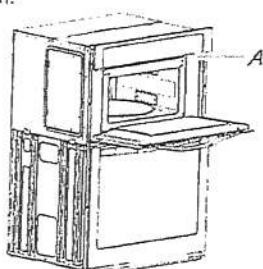
If codes permit and a separate ground wire is used, it is recommended that a qualified electrical installer determine that the ground path and the wire gauge are in accordance with local codes. Check with a qualified electrical installer if you are not sure the oven is properly grounded.

This oven must be connected to a grounded metal, permanent wiring system.

Be sure that the electrical connection and wire size are adequate and in conformance with the National Electrical Code, ANSI/NFPA 70-latest edition or CSA Standards C22.1-94, Canadian Electrical Code, Part 1 and C22.2 No. 0-M91-latest edition, and all local codes and ordinances.

To properly install your oven, you must determine the type of electrical connection you will be using and follow the instructions provided for it here.

- Oven must be connected to the proper electrical voltage and frequency as specified on the model/serial/rating plate. See the following illustration.



A. Model/serial/rating plate

- Models rated from 7.3 to 9.6 kW at 240 volts (5.4 to 7.4 kW at 208 volts) require a separate 40-amp circuit. Models rated at 4.8 kW and below at 240 volts (3.6 kW and below at 208 volts) require a separate 30-amp circuit.
- A circuit breaker is recommended.
- Connect directly to the fused disconnect (or circuit breaker box) through flexible, armored or nonmetallic sheathed, copper cable (with grounding wire). See "Make Electrical Connection" section.
- Flexible conduit from the oven should be connected directly to the junction box.
- Do not cut the conduit. The length of conduit provided is for serviceability of the oven.
- A UL listed or CSA approved conduit connector must be provided.
- If the house has aluminum wiring, follow the procedure below:
 - Connect a section of solid copper wire to the pigtail leads.
 - Connect the aluminum wiring to the added section of copper wire using special connectors and/or tools designed and UL listed for joining copper to aluminum.

Follow the electrical connector manufacturer's recommended procedure. Aluminum/copper connection must conform with local codes and industry accepted wiring practices.

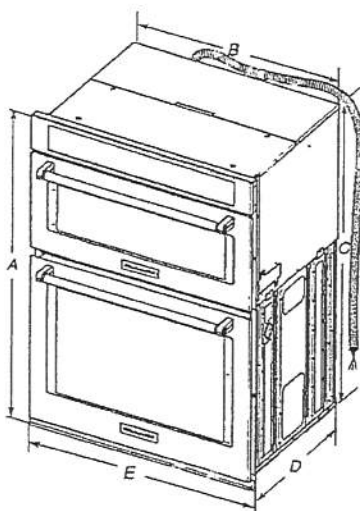
For power requirements, refer to the following table.

Model	Voltage	Amperage (L1)*	Amperage (L2)*	Rating (W)
KOCE507E/KOCE500E	120/240	32	30	8000
KOCE507E/KOCE500E	120/208	30	28	6600

*Amperage values noted above are for information purposes only: the units are rated in watts.

Because Whirlpool Corporation includes a continues commitment to improve our products, we reserve the right to change materials and specifications without notice.

PRODUCT DIMENSIONS



27" (68.6 cm) models

A. 42³/₁₆" (108.0 cm) overall height

B. 25¹/₁₆" (64.6 cm) recessed width

C. 41" (104.1 cm) recessed height

D. 23¹/₄" (59.1 cm) max. recessed depth

E. 27" (68.6 cm) overall width

F. 48" (121.9 cm) flexible conduit length measured from the conduit clamp located at the rear of the oven. Do not remove the conduit clamp.

30" (76.2 cm) models

A. 42³/₁₆" (108.0 cm) overall height

B. 28⁷/₁₆" (72.3 cm) recessed width

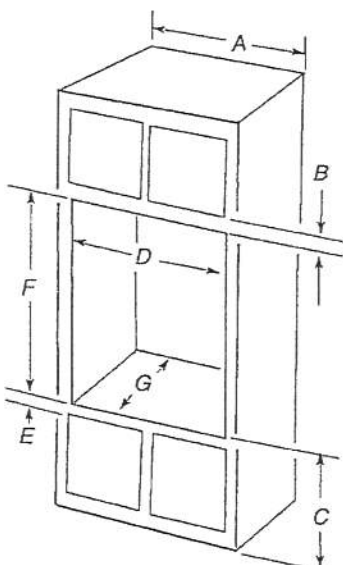
C. 41" (104.1 cm) recessed height

D. 23¹/₄" (59.1 cm) max. recessed depth

E. 30" (76.2 cm) overall width

F. 48" (121.9 cm) flexible conduit length measured from the conduit clamp located at the rear of the oven. Do not remove the conduit clamp.

Cabinet Dimensions



27" (68.6 cm) models

A. 27" (68.6 cm) min. cabinet width

B. 1" (2.5 cm) top of cutout to bottom of upper cabinet door

C. 19¹/₄" (48.9 cm) bottom of cutout to floor is recommended. 4"-19¹/₄" (10.2-48.9 cm) bottom of cutout to floor is acceptable.

D. 25¹/₁₆" (64.8 cm) cutout width

E. 1¹/₂" (3.8 cm) min. bottom of cutout to top of cabinet door

F. 41¹/₁₆" (105 cm)* recommended cutout height

G. 24" (60.7 cm) cutout depth

30" (76.2 cm) models

A. 30" (76.2 cm) min. cabinet width

B. 1" (2.5 cm) top of cutout to bottom

C. 19¹/₄" (48.9 cm) bottom of cutout to floor is recommended. 4"-19¹/₄" (10.2-48.9 cm) bottom of cutout to floor is acceptable.

D. 28¹/₁₆" (72.4 cm) cutout width

E. 1¹/₂" (3.8 cm) min. bottom of cutout

F. 41¹/₁₆" (105 cm)* recommended cutout

G. 24" (60.7 cm) cutout depth

* NOTE: The cabinet height can be between 41" (104.1 cm) and 41¹/₂" (105.6 cm) for microwave/oven combination.

Dimensions are for planning purposes only. For complete details, see Installation Instructions packed with product. Specifications subject to change without notice.

Ref. W10725683B
 2/10/15

PV-79 ○ ○

March 29, 2021

Proper Disposal of your Old Wine Cellar

WARNING: Risk of child entrapment. Before you throw away your old Wine Cellar:

- Take off the door.
- Leave the shelves in place so that children may not easily climb inside.

⚠ WARNING

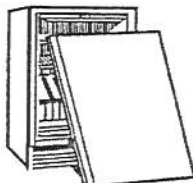
Suffocation Hazard

Remove doors or lid from your old appliance.

Failure to do so can result in death or brain damage.

IMPORTANT: Child entrapment and suffocation are not problems of the past. Junked or abandoned wine cellars are still dangerous – even if they will sit for “just a few days.”

If you are getting rid of your old wine cellar, please follow these instructions to help prevent accidents.



Important information to know about disposal of refrigerants:

Dispose of refrigerator in accordance with Federal and Local regulations. Refrigerants must be evacuated by a licensed, EPA certified refrigerant technician in accordance with established procedures.

INSTALLATION REQUIREMENTS

Tools and Parts

Gather the required tools and parts before starting installation.

Tools and parts needed:

- Phillips screwdriver.
- Custom Overlay Door Panel - Refer “Custom Overlay Panel Preparation”.
- Custom handle and mounting hardware (optional).

Parts supplied:

- M4 x 30 flathead screws (8).

Location Requirements

⚠ WARNING



Explosion Hazard

Keep flammable materials and vapors, such as gasoline, away from wine cellar.

Failure to do so can result in death, explosion, or fire.

IMPORTANT: This appliance is intended to be used in household and similar applications such as:

- Staff kitchen areas in shops, office and other working environments;
- Farm houses and by clients in hotels, motels and other residential type environments;
- Bed and breakfast type environments;
- Catering and similar non-retail applications.

NOTES:

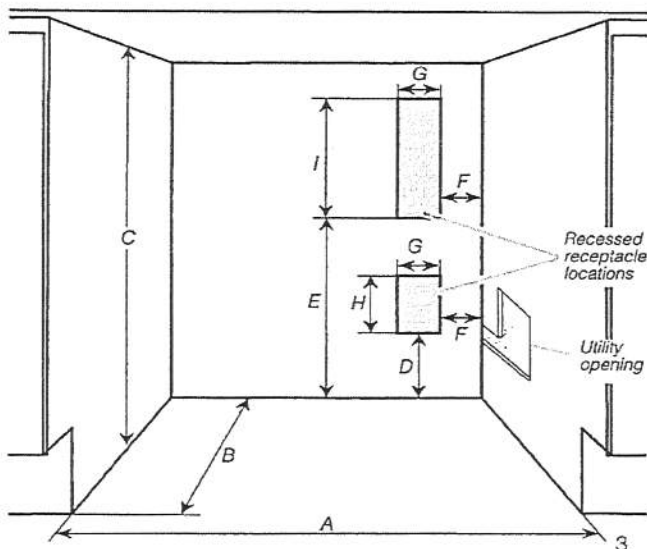
- For the wine cellar to be flush with the front of the base cabinets, remove any baseboards or moldings from the rear of the opening. See “Product Dimensions” and later in this section, “Opening Dimensions.”
- It is recommended that you do not install the wine cellar near an oven, radiator, or other heat source.
- Do not install in a location where the temperature will fall below 55 °F (13 °C). For best performance, do not install the wine cellar behind a cabinet door or block the base grille.

Opening dimensions:

- Height dimensions are shown with the leveling legs extended to the minimum height.

NOTE: When leveling legs are fully extended, add 5/8" (15 mm) to the height dimensions. See “Product Dimensions.”

- If the floor of the opening is not level with the kitchen floor, shim the opening to make it level with the kitchen floor.



PV-79 ○ 82
 March 29, 2021

Opening and utility location dimensions	
Opening width - A	24" (60.96 cm) min.
Opening depth - B	24" (60.96 cm) min.
Opening height - C	34 ¹ / ₂ " (87.6 cm) min. 35" (88.9 cm) max.
Dimension - D	12 ¹ / ₁₆ " (30.64 cm)
Dimension - E	21 ³ / ₄ " (55.16 cm)
Dimension - F	1 ³ / ₄ " (4.44 cm)
Dimension - G	3" (7.55 cm)
Dimension - H	4 ¹ / ₂ " (11.37 cm)
Dimension - I	9 ¹ / ₄ " (23.47 cm)

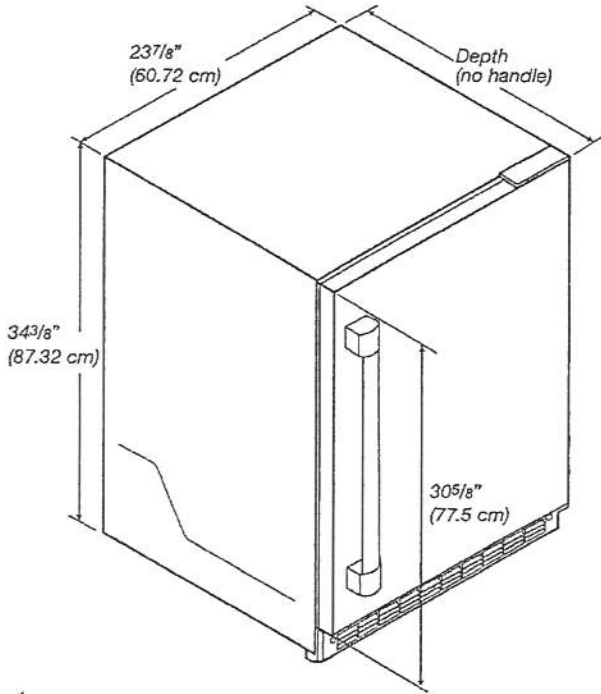
For flush installation, the power outlet can be installed in adjacent cabinetry with a cutout on the power cord side for routing of the power cord.

The power outlet can also be recessed on the back wall behind the unit as per recommended receptacle locations in the above illustration.

Product Dimensions

Overall product	
Width (up to hinge cover)	23 ⁷ / ₈ " (60.72 cm)
Height (up to hinge cover)	34 ³ / ₈ " (87.32 cm)
Panel ready models depth (with 3/4" panel and no handle)	23 ¹³ / ₁₆ " (60.5 cm)
Raw Door Height	30 ⁵ / ₈ " (77.75 cm)
Depth (no handle)	23 ⁵ / ₈ " (60.01 cm)

NOTE: The power cord is 60" (152.4 cm) long.



Custom Overlay Panel

NOTE: For standard stainless steel or glass door models, skip these instructions and go to "Electrical Requirements" section.

If you plan to install a custom overlay panel, you will need to create the panel yourself or consult a qualified cabinet maker or carpenter. Refer dimension drawings for panel specifications.

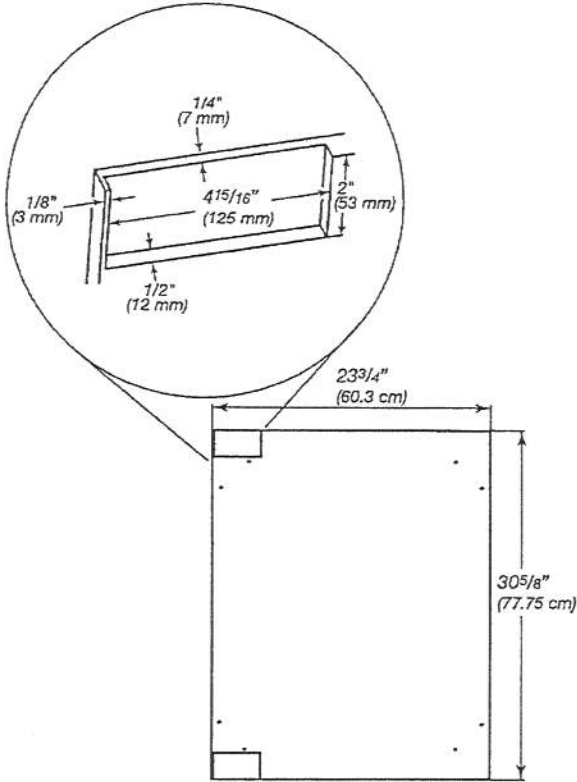
IMPORTANT:

- The thickness of the overlay panel must be 3/4" (19 mm).
- Custom solid door overlay panel must not weigh more than 20 lb (9.07 kg).
- Custom glass door overlay panel must not weigh more than 10 lb (4.54 kg).
- Overlay panels weighing more than recommended may cause damage to your appliance.

Solid door overlay panel - Preparation:

Create the custom overlay panel using the dimensions shown in the illustration "Solid door overlay panel and hinge routing dimensions". Route shaded areas to a 1/2" (12 mm) depth as shown.

IMPORTANT: The following graphic shows a custom panel for a door with the hinges installed on the right-hand side. If your wine cellar has the hinges installed on the left-hand side, rotate the custom frame 180° so the hinge markings will be on the left.



Solid door overlay panel and hinge routing dimensions