



CONSTRUCTION SUMMARY

Lot: 85  
Model: 50.04 C BEAUMONT  
Project/Phase: Pine Valley Forevergreen / 1

APPLIANCES

Invoice	Qty.	Description
2656  23Mar21 NoCat	1	APPLIANCE SPECIFICATIONS ATTACHED - SIGNED COPY

BASEMENT WINDOWS

Invoice	Qty.	Description
2642 72,675 16Mar21	5	BASEMENT WINDOWS - UPGRADE BASEMENT WINDOW SIZE TO 30 " X 24" - 10" FRAME

CONCRETE AND DRAIN

Invoice	Qty.	Description
2642 101,930 16Mar21	1	BACK FLOW PREVENTER VALVE

FORMING

Invoice	Qty.	Description
2642 72,560 16Mar21	1	MODEL OPTIONS 50.04 - KITCHEN REAR - OPT. COVERED LOGGIA AS PER PLAN
2642 101,930 16Mar21	1	OPTIONAL COLD CELLAR BELOW LOGGIA - SEE PLAN



SCHEDULE 'F'

PV-85 attached  
March 15, 2021

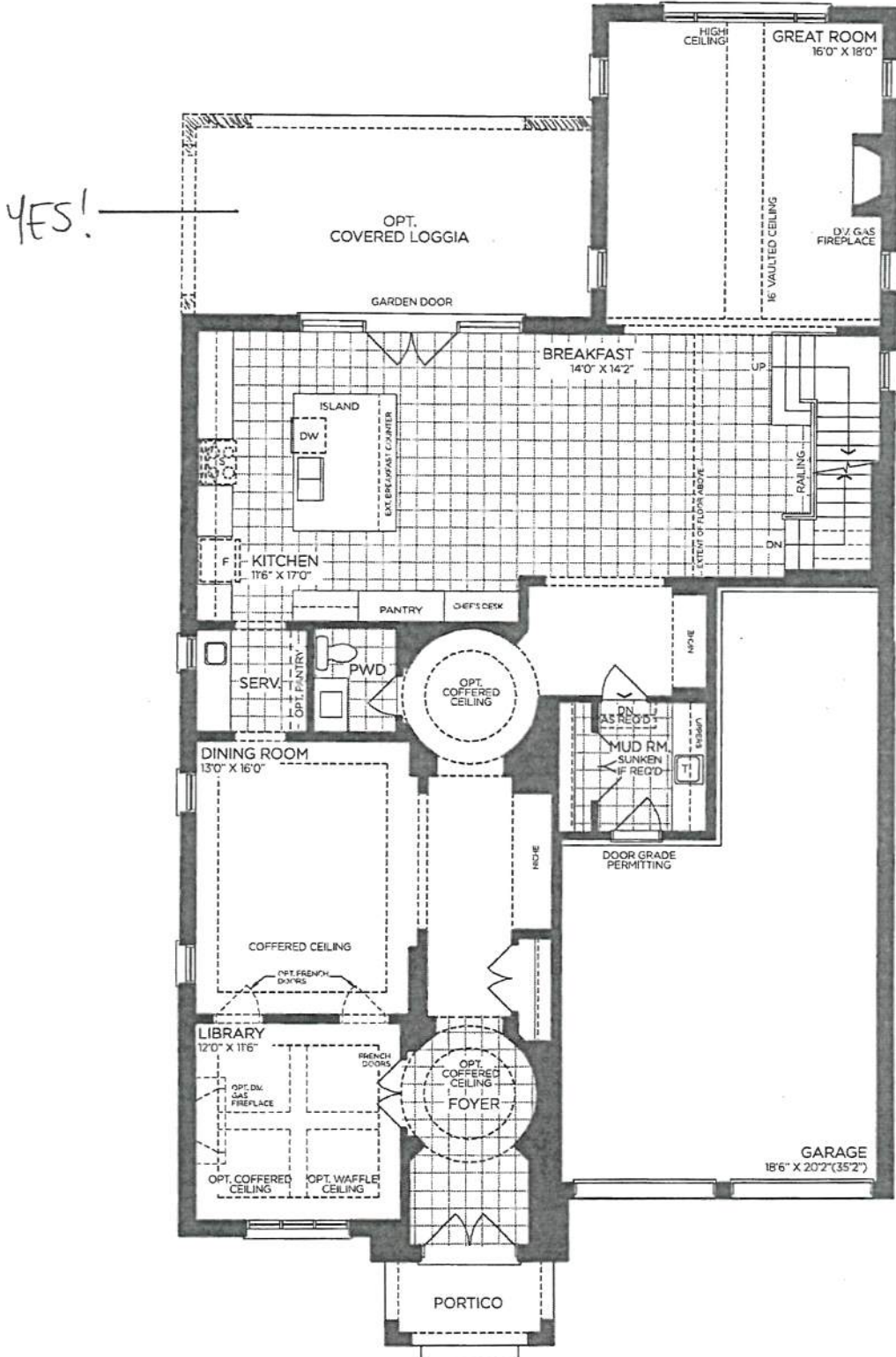
# The Beaumont

## 50' SERIES

Elevation A • 4,170 sq.ft.  
4,315 sq.ft. Opt. Elevator

Elevation B • 4,165 sq.ft.  
4,315 sq.ft. Opt. Elevator

Elevation C • 4,250 sq.ft.  
4,400 sq.ft. Opt. Elevator



GROUND FLOOR | ELEV. A

VENDOR

PURCHASER

PURCHASER

**GOLDPARK**  
WORTH MORE™

Prices, figures, illustrations, sizes, features and finishes are subject to change without notice. Areas and dimensions are approximate and actual usable floor space may vary from the stated area. Layout may be reverse of the unit purchased. E. & O.E. 5004

SCHEDULE 'F'



PV-85 *attached*  
March 15, 2021

# The Beaumont

## 50' SERIES

Elevation A • 4,170 sq.ft.

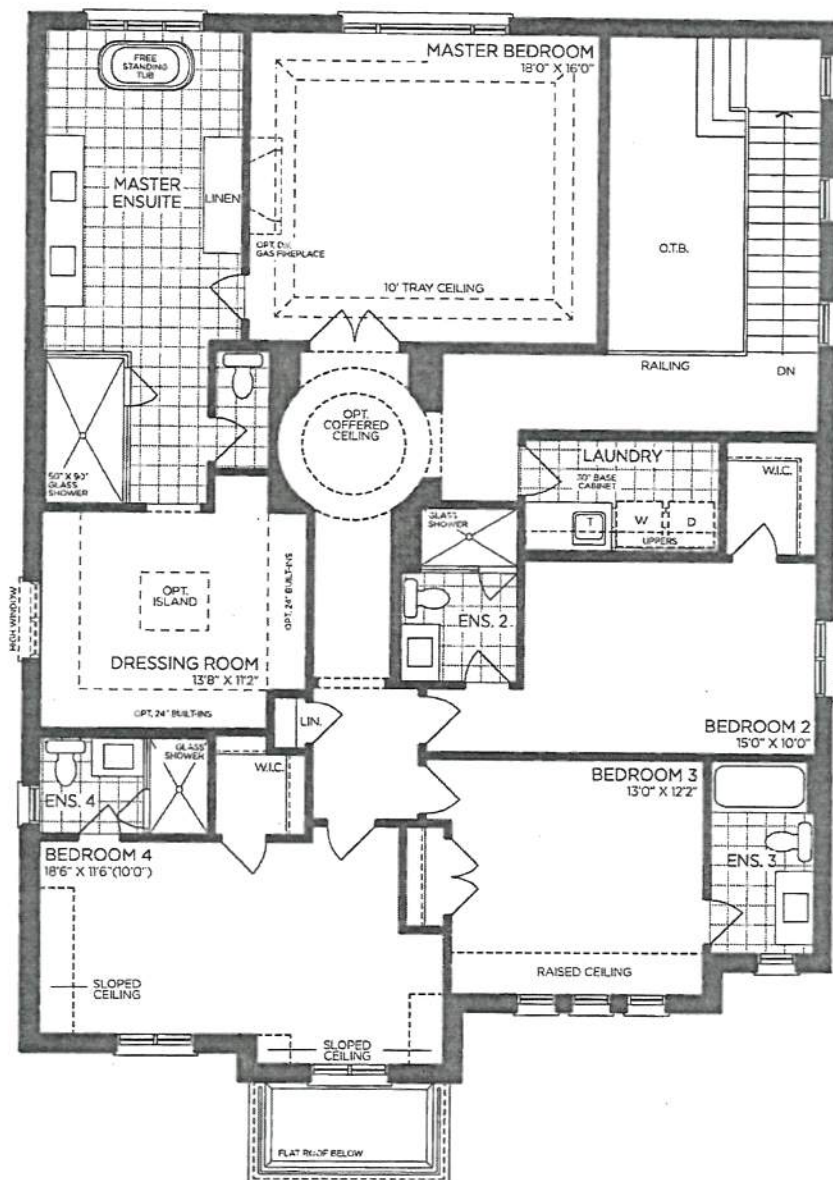
4,315 sq.ft. Opt. Elevator

Elevation B • 4,165 sq.ft.

4,315 sq.ft. Opt. Elevator

Elevation C • 4,250 sq.ft.

4,400 sq.ft. Opt. Elevator



SECOND FLOOR | ELEV. A

VENDOR

PURCHASER

PURCHASER

**GOLDPARK**  
WORTH MORE™

Prices, figures, illustrations, sizes, features and finishes are subject to change without notice. Areas and dimensions are approximate and actual usable floor space may vary from the stated area. Layout may be reverse of the unit purchased. E. & O.E. 5004



SCHEDULE 'F'

PV-85 *attached*  
March 15, 2021

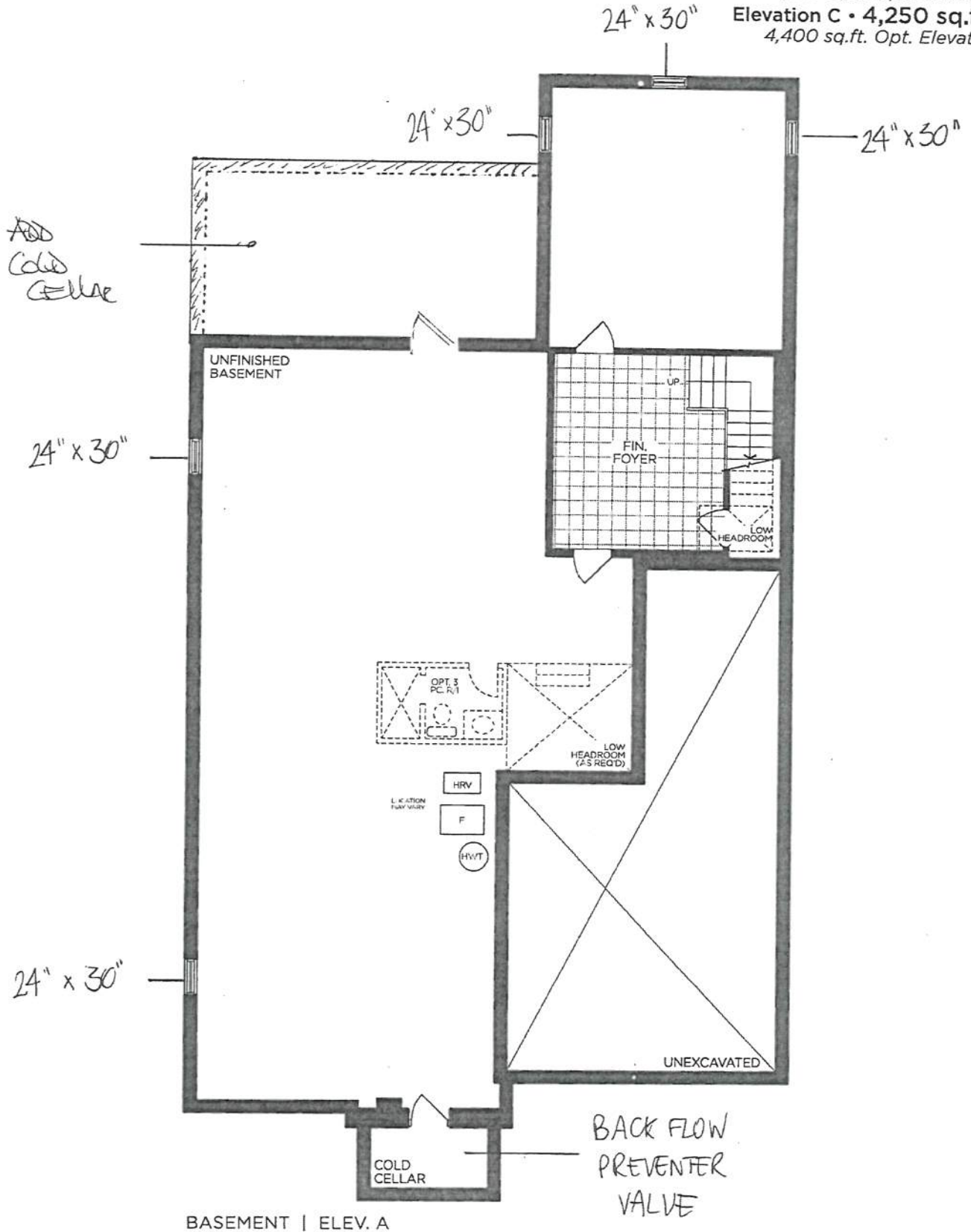
# The Beaumont

## 50' SERIES

Elevation A • 4,170 sq.ft.  
4,315 sq.ft. Opt. Elevator

Elevation B • 4,165 sq.ft.  
4,315 sq.ft. Opt. Elevator

Elevation C • 4,250 sq.ft.  
4,400 sq.ft. Opt. Elevator



BASEMENT | ELEV. A

VENDOR

PURCHASER

PURCHASER

**GOLDPARK**  
WORTH MORE™

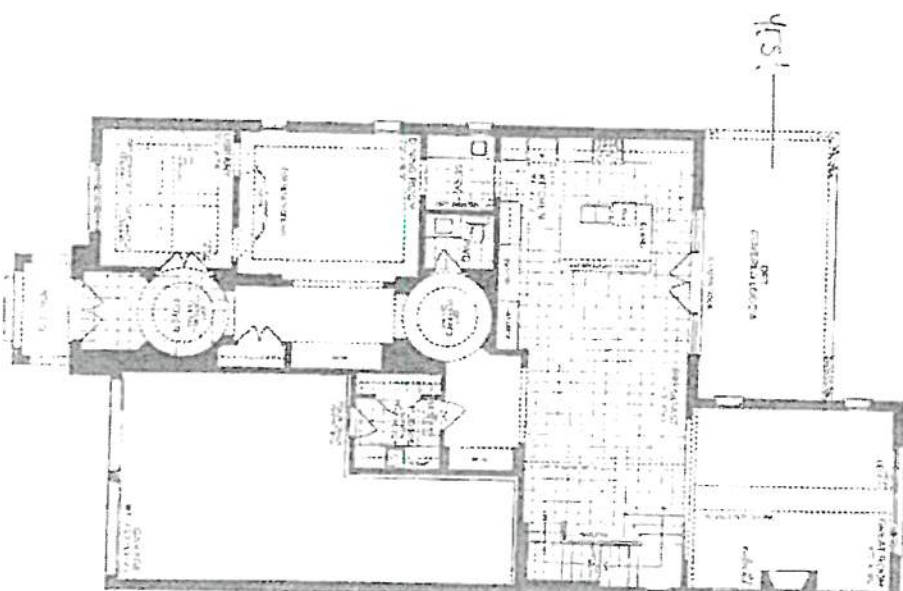
Prices, figures, illustrations, sizes, features and finishes are subject to change without notice. Areas and dimensions are approximate and actual usable floor space may vary from the stated area. Layout may be reverse of the unit purchased. E. & O.E. 5004



SCHEDULE F  
PV-55  
March 15, 2011

# The Baumont

**50' SERIES**  
Elevation A • 4,170 sq.ft.,  
4,315 sq.ft. Opt. Floorplan  
Elevation B • 4,165 sq.ft.,  
4,315 sq.ft. Opt. Floorplan  
Elevation C • 4,250 sq.ft.,  
4,400 sq.ft. Opt. Floorplan



GROUND FLOOR + ELEV. 0

VENDOR

 $\text{C}_6\text{H}_5\text{CH}_2\text{CH}=\text{CH}_2$ 

POLYIMIDES 5111

GOLD

[illegible]

*(continued from page 9)*



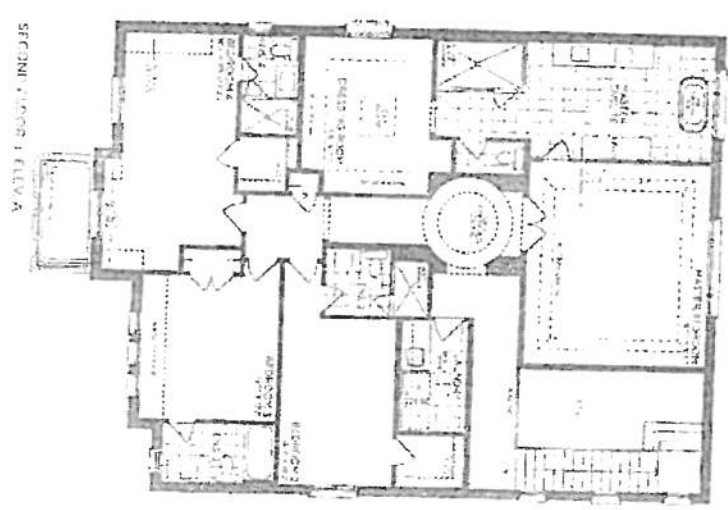
PR 85  
March 15, 1971

SCHEDULE 'F'

# The Beaumont

50' SERIES

- Elevation A - 4,170 sq.ft.
- 4.35 sq/ft. Opt. Elevator
- Elevation B - 4,165 sq.ft.
- 4.35 sq/ft. Opt. Elevator
- Elevation C - 4,250 sq.ft.
- 4.400 sq/ft. Opt. Elevator



VERBODEN  
TOEGANG  
TOEGANG

GOLD

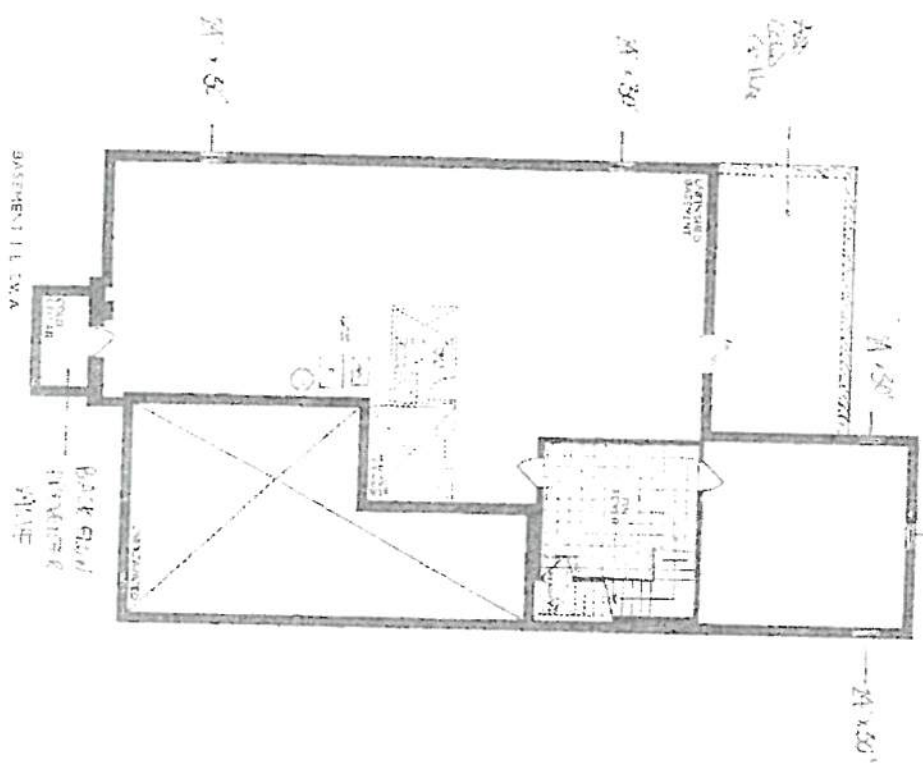
VERBODEN TOEGANG  
TOEGANG

PINE VALLEY

SCHEDULE  
FIG. 85  
March 15, 1907



# The Beaumont

50' SERIES  
Elevation A - 4,170 sq. ft.  
4,475 sq. ft. Over Foundation  
Elevation B - 4,165 sq. ft.  
4,475 sq. ft. Over Foundation  
Elevation C - 4,250 sq. ft.  
4,400 sq. ft. Over Foundation



VENDOR  
PURCHASER  
FURNISHED

GOLD

PV-85    
March 22, 2021

**PRG366WH**  
**36-INCH GAS PRO HARMONY® RANGE**  
PROFESSIONAL SERIES, STANDARD-DEPTH, PORCELAIN COOKTOP SURFACE

**Thermador** 



**FEATURES & BENEFITS**

- ★ - The Star® Burner delivers superior flame spread for more even heating
- ★ - ExtraLow® feature provides a wide range of temperature control, perfect for simmering delicate sauces
- ★ - 2 ExtraLow® burners for simmering, melting, or holding long durations
  - Raised pedestal burner and porcelain maintop for effortless cleaning
  - Convection Bake offers precise multi-level baking results

**TECHNICAL DETAILS**

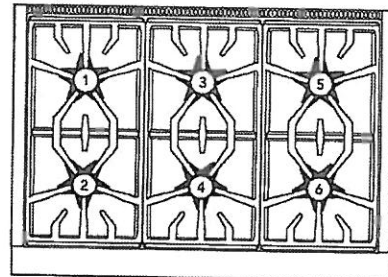
Circuit Breaker	15 A
Volts	120 V, 60Hz
Energy Source	Gas
Plug Type USA	120V – 3 Prong
Power Cord Length	65" (1,651mm)
Gas Supply	3/4"

**WARRANTY**

Limited Warranty, Entire Appliance, Parts and Labor	2 Year
---	--------

SEE PAGE 2 FOR INCLUDED AND OPTIONAL ACCESSORIES

**RANGETOP**



Total number of cooktop Burners	6
1 – Power of Back Left Burner BTU	15,000 and XLO
2 – Power of Front Left Burner BTU	18,000 and XLO
3 – Power of Back Center Burner BTU	15,000
4 – Power of Front Center Burner BTU	18,000
5 – Power of Back Right Burner BTU	15,000
6 – Power of Front Right Burner BTU	18,000

**OVEN**

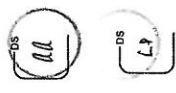
Oven Capacity	5.1 cu. ft.
Cooking Modes	Bake, Convection Bake, Roast, Broil
Sabbath	Yes
Self Clean	No
Telescopic Rack(s)	3
Interior Lights	2
Bake Power	20,500 BTU
Broil Power	17,500 BTU
Home Connect™ (Wi-Fi Enabled)	Yes
Cavity Interior Dimensions (HxWxD)	16 3/8" x 29 1/8" x 18 5/8"
Cavity Usable Dimensions (HxWxD)	11 1/4" x 25 5/8" x 16 3/4"

**DIMENSIONS & WEIGHT**

Overall Appliance Dimensions (HxWxD)	35 3/4" – 36 3/4" x 35 15/16" x 24 5/8"
Required Cutout Size (HxWxD)	35 3/4" – 36 3/4" x 36" x 24"
Net Weight	415 lbs.

★ THERMADOR® EXCLUSIVE

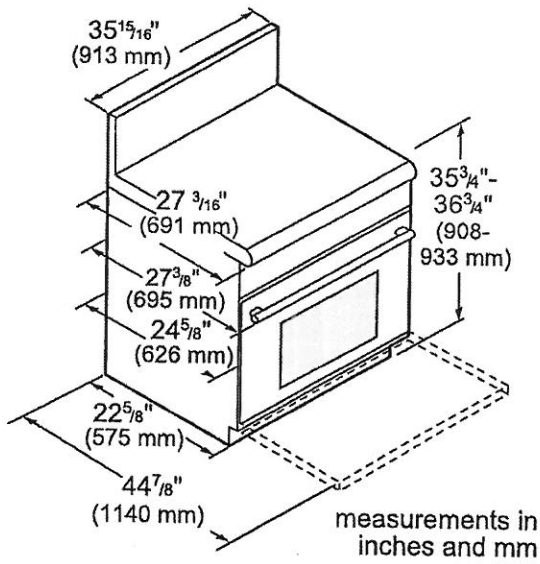


PV-85   
March 22, 2021

**PRG366WH**  
**36-INCH GAS PRO HARMONY® RANGE**  
PROFESSIONAL SERIES, STANDARD-DEPTH, PORCELAIN COOKTOP SURFACE

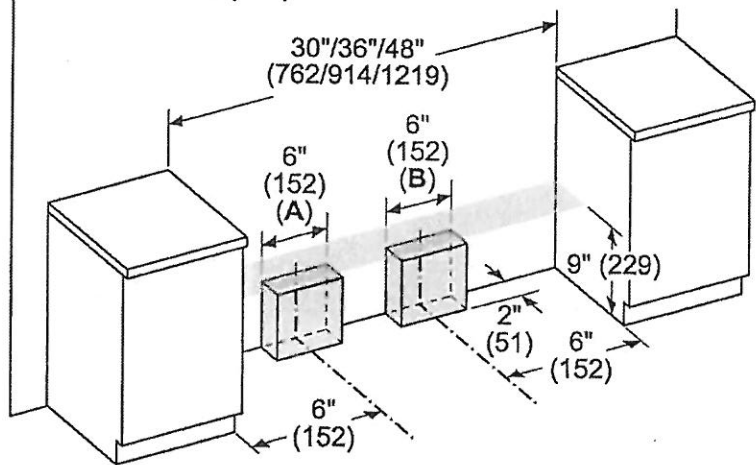


**36-INCH RANGE DIMENSIONS**





**36-INCH RANGE CUTOUT DIMENSIONS**

measurements in inches (mm)



A: Gas zone  
B: Electric zone

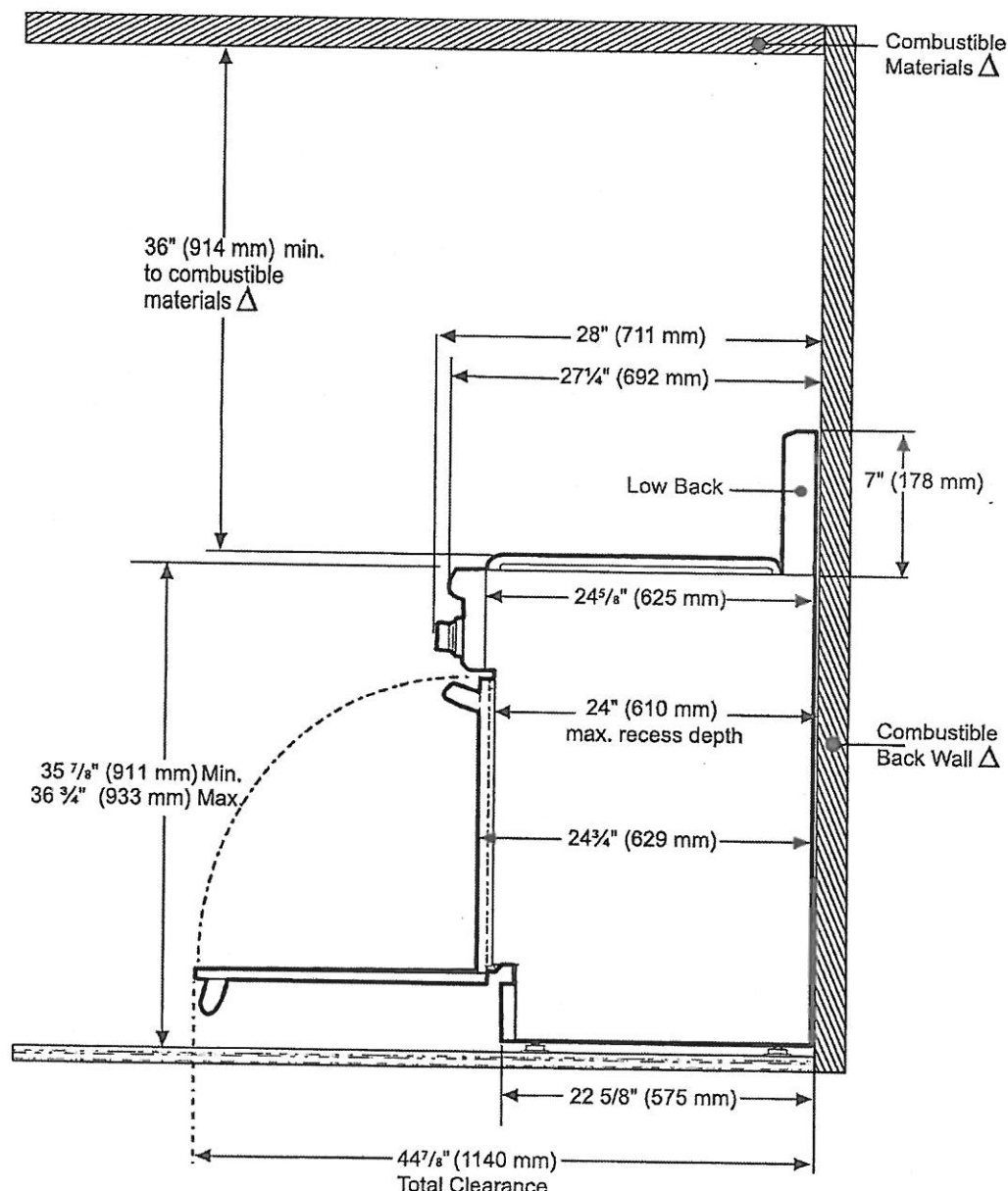
PV-85    
 March 22, 2021

**PRG366WH**  
**36-INCH GAS PRO HARMONY® RANGE**  
 PROFESSIONAL SERIES, STANDARD-DEPTH, PORCELAIN COOKTOP SURFACE





**36-INCH RANGE DIMENSIONS AND CLEARANCE REQUIREMENTS WITH "LOW BACK"**

**NOTE:** A 36-inch minimum clearance is required between the top of the cooking surface and the bottom of an unprotected cabinet. A 30-inch clearance can be used when the bottom of the wood or metal cabinet is protected by not less than 1/4 inch of a flame retardant material covered with not less than No. 28 MSG sheet steel, 0.015 inch (0.4 mm) thick stainless steel, 0.024 inch (0.6 mm) aluminum, or 0.020 inch (0.5 mm) thick copper.



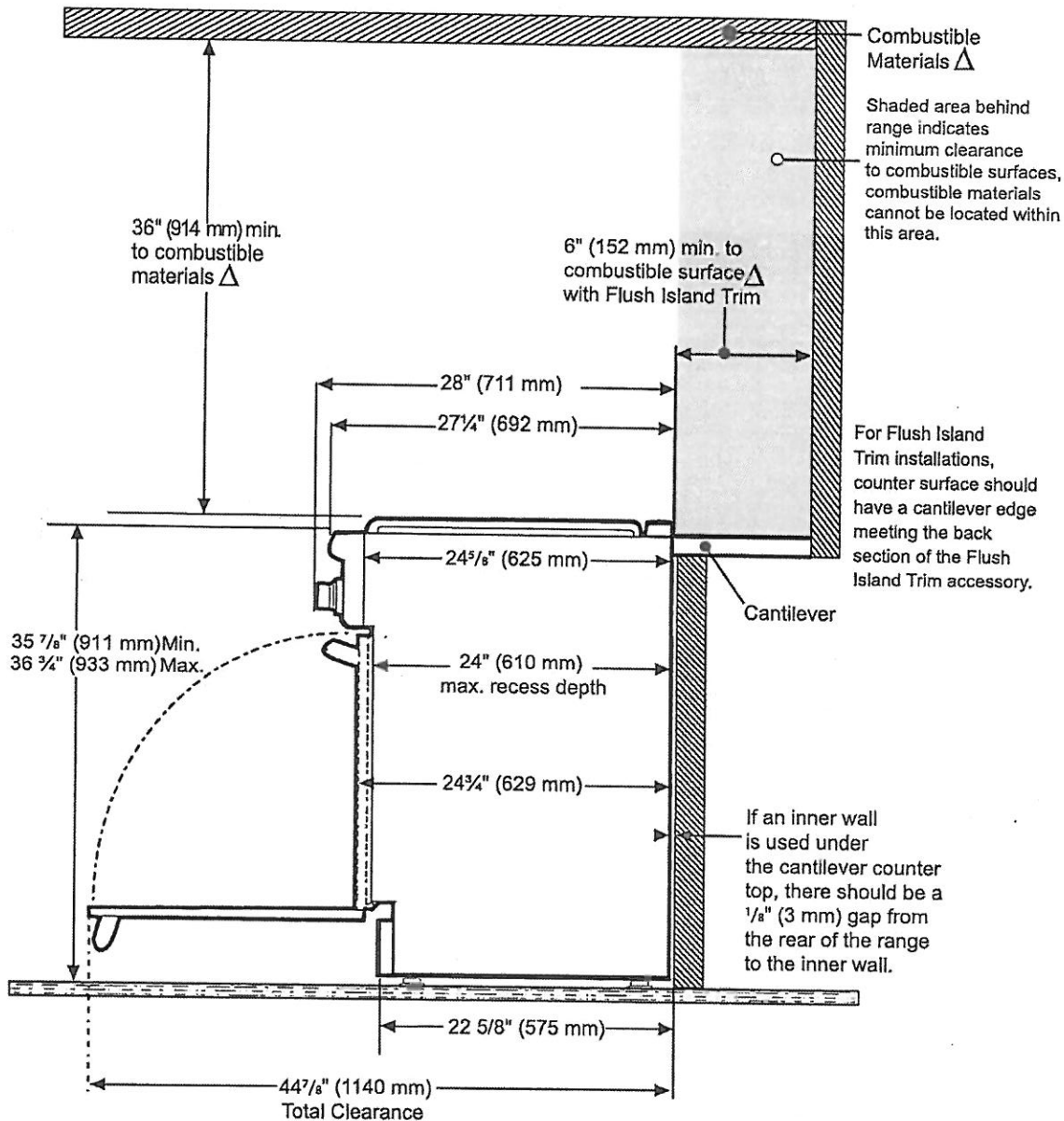
$\Delta$  As defined in the "National Fuel Gas Code" (ANSI Z223.1, Current Edition). Clearances from non-combustible materials are not part of the ANSI Z21.1 scope and are not certified by CSA. Clearances of less than 6" (152 mm) must be approved by the local codes and/or by the local authority having jurisdiction.

PV-85    
March 22, 2021

**PRG366WH**  
**36-INCH GAS PRO HARMONY® RANGE**  
PROFESSIONAL SERIES, STANDARD-DEPTH, PORCELAIN COOKTOP SURFACE

**Thermador** 

**36-INCH RANGE DIMENSIONS AND CLEARANCE REQUIREMENTS WITH "FLUSH ISLAND TRIM"**



**Δ** As defined in the "National Fuel Gas Code" (ANSI Z223.1, Current Edition). Clearances from non-combustible materials are not part of the ANSI Z21.1 scope and are not certified by CSA. Clearances of less than 6" (152 mm) must be approved by the local codes and/or by the local authority having jurisdiction.

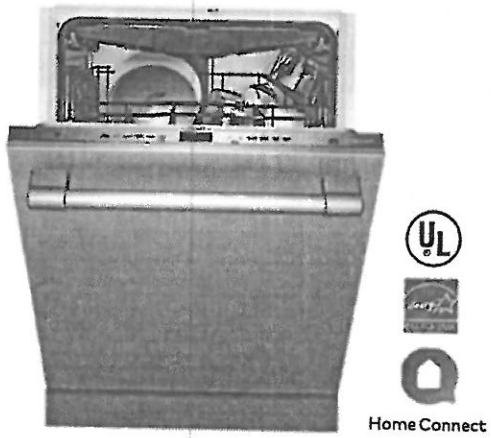
These warranties give you specific legal rights and you may have other rights that vary from state to state. Limited warranty from date of purchase. For complete warranty details, refer to your Use & Care manual, or ask your dealer.

Specifications are for planning purposes only. Refer to installation instructions and consult your countertop supplier prior to making counter opening. Consult with a heating and ventilation engineer for your specific ventilation requirements. For the most detailed information, refer to installation instructions accompanying product or write to Thermador indicating the model number. Specifications are correct at time of printing. Thermador reserves the right to change product specifications or design without notice. Some models are certified for use in Canada. Thermador is not responsible for products that are transported from the U.S. for use in Canada.

1 800 735 4328 | USA THERMADOR.COM | CANADA THERMADOR.CA | ©2020 BSH HOME APPLIANCES CORPORATION. ALL RIGHTS RESERVED.

PV-85  
March 22, 2021

DWHD650WFP  
EMERALD® 6-PROGRAM DISHWASHER  
PROFESSIONAL SERIES HANDLE



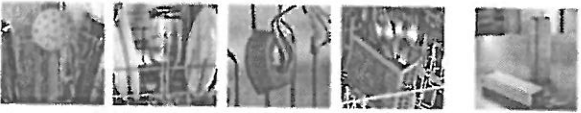
Also Available In:  
DWHD650WFM – Flat Stainless Steel Panel with  
Masterpiece® Series Handle  
DWHD650WPR – Custom Panel

FEATURES & BENEFITS

- Chef's Tool Drawer (3rd Rack) is designed to make loading and unloading tools and hard to place items extraordinarily easier
- Sens-A-Wash® measures water cleanliness and adjusts wash cycle
- Three stage advanced filtration recirculates water for sparkling results
- 3-Level adjustable upper rack is customizable for all of your needs, designed to be raised for extra large items placed on the bottom rack, or lowered to fit taller wine glasses on the upper rack
- Extra Dry Option adds extra heat to the final rinse to enhance drying results
- Impressively Quiet®—48 dBA for peaceful kitchen experience
- Thermador Connected Experience by Home Connect brings exclusive dish features that keep you connected. Always.

ACCESSORIES (OPTIONAL)

Dishwasher Supply and Drainage Hose Extension 76 3/4"	SGZ1010UC
Dishwasher Accessory Kit	SMZ5000
Fine Silverware Carafe	SMZ5002UC
Junction Box	SMZPCJB1UC



Accessory Kit includes Extra-Tall-Item Sprinkler, Vase / Bottle Holder, 3 Plastic Item Clips and Small Item Basket

Fine Silverware Carafe

GENERAL PROPERTIES

Number Of Wash Cycles	6
Number Of Options	5
dBA	48
Third Rack	Chef's Tool Drawer®
Rack Adjustability	Rackmatic 3-Stage
Tub Material	Stainless Steel
Control Type	Touch Control
Concealed Water Heating Element	Yes
Leak Protection System	24/7 AquaStop®
Water Softener	No
Five-Level Wash	Yes
Childlock	No
Home Connect (Wi-Fi Enabled)	Yes

EFFICIENCY

Water Usage Per Cycle (g)	3.5 g
Energy Efficiency Class	Tier 1
ENERGY STAR® Certified	Yes
Total Annual Energy Consumption (kWh)	269 kWh
Total Annual Water Consumption (g)	624 g

CAPACITY

Number Of Place Settings	16
--------------------------	----

TECHNICAL DETAILS

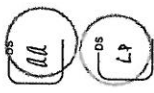
Watts (W)	1,440 W
Current (A)	12 A
Volts (V)	120 V
Frequency (Hz)	60 Hz
Power Cord Length (in)	67"
Power Cord Install Length from Corner of Unit when Facing the Door (in)*	Left - 45" Right - 56"
Minimum Water Pressure (lb/sin)	14
Max. Temperature for Water Intake	140° F
Length Inlet Hose (in)	N/A
Length Outlet Hose (in)	79"

DIMENSIONS & WEIGHT

Overall Appliance Dimensions (HxWxD) (in)	33 7/8" x 23 9/16" x 23 3/4"
Required Cutout Size (HxWxD) (in)	33 7/8" Min. x 23 5/8" Min. x 24"
Adjustable Feet	Yes
Net Weight (lbs)	93 lbs

\*September 2020 running production change to remove adhesive routing clips for power cord. These clips and the edge protector are now included in the dishwasher accessory kit #SMZEPCC1UC.



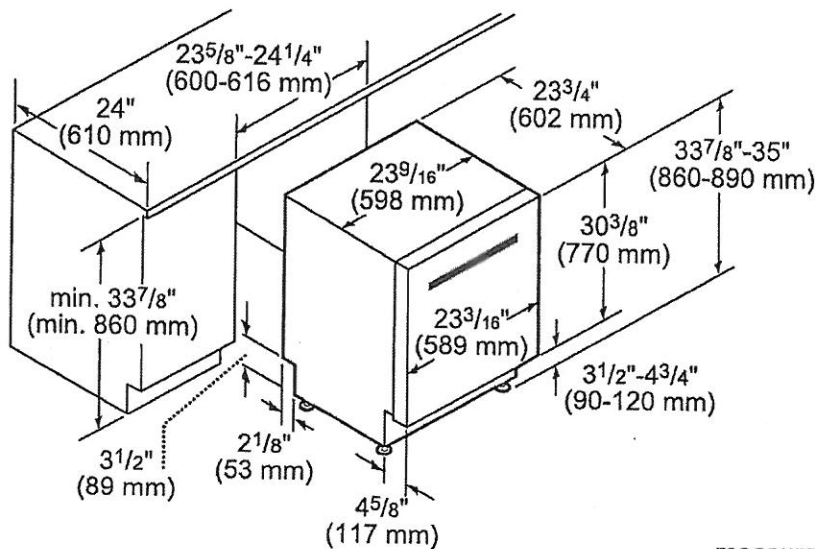
PV-85   
March 22, 2021

DWHD650WFP  
EMERALD® 6-PROGRAM DISHWASHER  
PROFESSIONAL SERIES HANDLE



WARRANTY	
Limited Warranty, Entire Appliance, Parts and Labor	2 Year
Limited Warranty for Microprocessor or Printed Circuit Board; Parts Only	3rd to 5th Year
Limited Warranty for Racks (Does Not Include Rack Components); Parts Only	3rd to 5th Year
Limited Warranty for Rust-through On Inner Tub Liner; Parts Only	Lifetime

DISHWASHER & CUTOUT DIMENSIONS



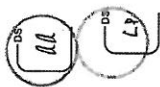
measurements in inches and mm

DocuSign Envelope ID: 6681413F-7A13-4D43-8FF4-319A43F4B349

These warranties give you specific legal rights and you may have other rights that vary from state to state. Full warranty and limited warranty from date of installation. For complete warranty details, refer to your Use & Care manual, or ask your dealer.

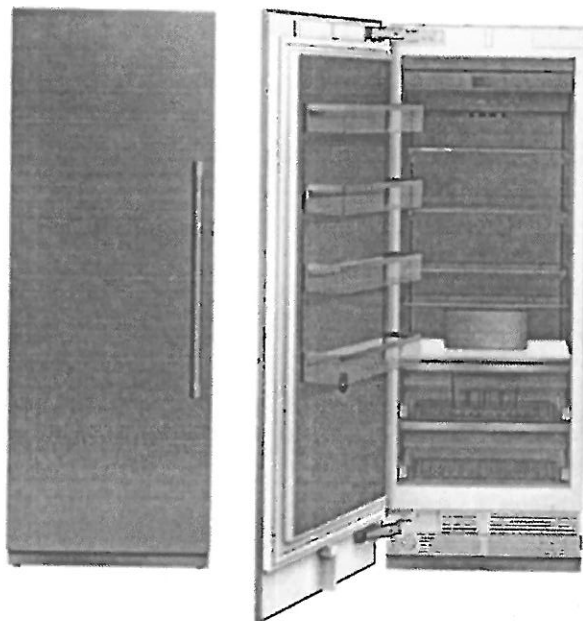
Specifications are for planning purposes only. Refer to installation instructions and consult your countertop supplier prior to making counter opening. Consult with a heating and ventilation engineer for your specific ventilation requirements. For the most detailed information, refer to installation instructions accompanying product or write to Thermador indicating the model number. Specifications are correct at time of printing. Thermador reserves the right to change product specifications or design without notice. Some models are certified for use in Canada. Thermador is not responsible for products that are transported from the U.S. for use in Canada.

1 800 735 4328 | USA THERMADOR.COM | CANADA THERMADOR.CA | ©2020 BSH HOME APPLIANCES CORPORATION. ALL RIGHTS RESERVED.

PV- 85   
March 22, 2021

**T30IF905SP**  
**30-INCH BUILT-IN FREEZER COLUMN WITH**  
**INTERNAL ICE MAKER**  
FREEDOM® COLLECTION, PANEL-READY

**Thermador** 



**FEATURES & BENEFITS**

- Full Stainless Steel Inner Liner
- Freedom® Hinge enables true flush design
- Auto Door Opening provides the opening of the door with just a slight push or pull
- SoftClose® Drawers for easy and controlled storage
- Sleek clean design for the perfect symmetry when paired with additional columns
- TFT control panel managing all your columns functions

**TEMPERATURE RANGES**

Freezer	-11°F (-24°C) to 7°F (-14°C)
SuperFreeze®	-22°F (-30°C) for approximately 52 hours
Energy Saving (Economy) Mode	3°F (-16°C)

**GENERAL PROPERTIES**

Home Connect™ (Wi-Fi Enabled)	Yes
Panel Ready	Yes
Reversible Door Swing	Yes
SoftClose® Door	Yes*
SoftClose® Drawers	Yes
Lighting	LED Sidewall and Theater Lighting
Freezer Shelves	4
Adjustable Shelves	3
Shelf Material	Glass w/Aluminum Profile
Full Extension Drawers @ 115° Door Opening Angle	Yes
General Use Drawer	2
Door Bins	4
External LED Proximity Sensor	No
Oversized Dispenser Opening	No
Chilled Water, Crushed and Cubed Ice	No
Rapid Water Replenishment System	No
Ice Maker with Diamond Ice System	Yes
Door Open Alarm	Yes
Open Door Assist	Yes
Special Modes	Sabbath, Economy, Vacation

**CAPACITY**

Total Capacity (cu. ft.)	15.8 cu. ft.
--------------------------	--------------

**PERFORMANCE**

Dedicated Evaporator & Compressor System	Yes
SuperFreeze®	Yes
Defrost Process	Frost-Free

**TECHNICAL DETAILS**

Watts (W)	350 W
Current (A)	15 A
Volts (V)	110-120 V
Frequency (Hz)	60 Hz
Power Cord Length (in.)	118
Plug Type	120V-3 Prong

**DIMENSIONS & WEIGHT**


Appliance Dimensions (H x W x D) (in.)	84"*** x 29 3/4" x 24"
Required Cutout Size (H x W x D) (in.)	84" x 30" x 25"
Net / Gross Weight (lbs)	362 / 398 lbs

**EFFICIENCY**

ENERGY STAR® Qualified	Yes
Annual Energy Consumption	479 kWh

\*To verify, if you have a refrigeration unit with Soft-Close capability please contact our customer team by calling 1-800-735-4328.

\*\*Height adjustable + / - 1/2" (+ / - 13 mm)

PV-85   
March 22, 2021

**T30IF905SP**  
**30-INCH BUILT-IN FREEZER COLUMN WITH**  
**INTERNAL ICE MAKER**  
FREEDOM® COLLECTION, PANEL-READY

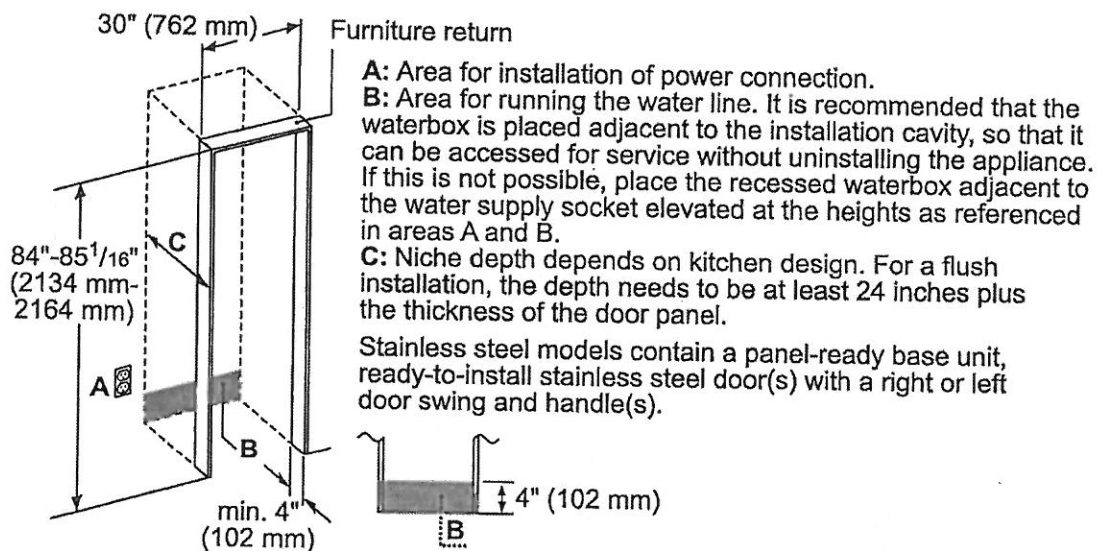
**Thermador** 

**WARRANTY**

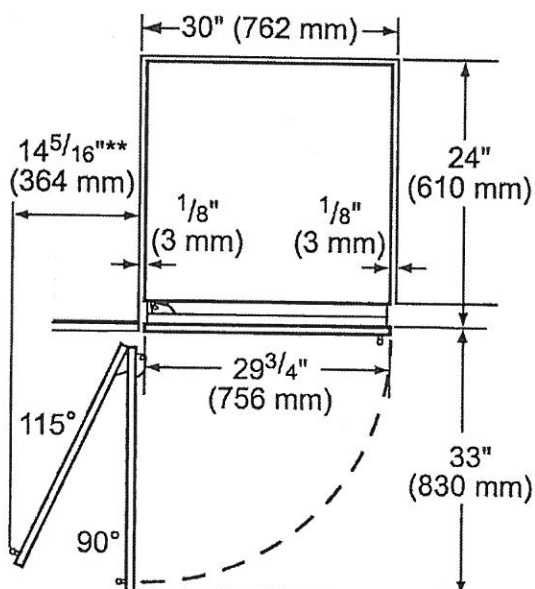
Limited, Entire Appliance, Parts and Labor on Any Part of the Refrigerator that Fails Because of a Manufacturing Defect	2 Year
Limited Warranty for Sealed Refrigeration System*; Parts and Labor	3rd to 6th Year
Limited Warranty for Sealed Refrigeration System*; Parts Only	7th to 12th Year
Limited Warranty for Stainless Steel Rust-Through	Lifetime

\*Sealed refrigeration system includes compressor, evaporator, condenser, dryer / strainer and connection tubing

**CUTOUT DIMENSIONS**

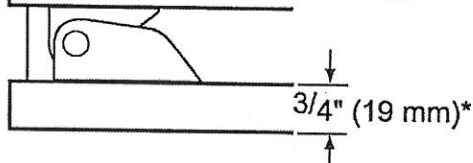


**TOP VIEW CLEARANCE**



**\*\* Door handle must be added to this dimension**

**\* Depends on the thickness of the unit door.**  
**3/4" (19 mm)** refers to the stainless steel door. (special accessory).

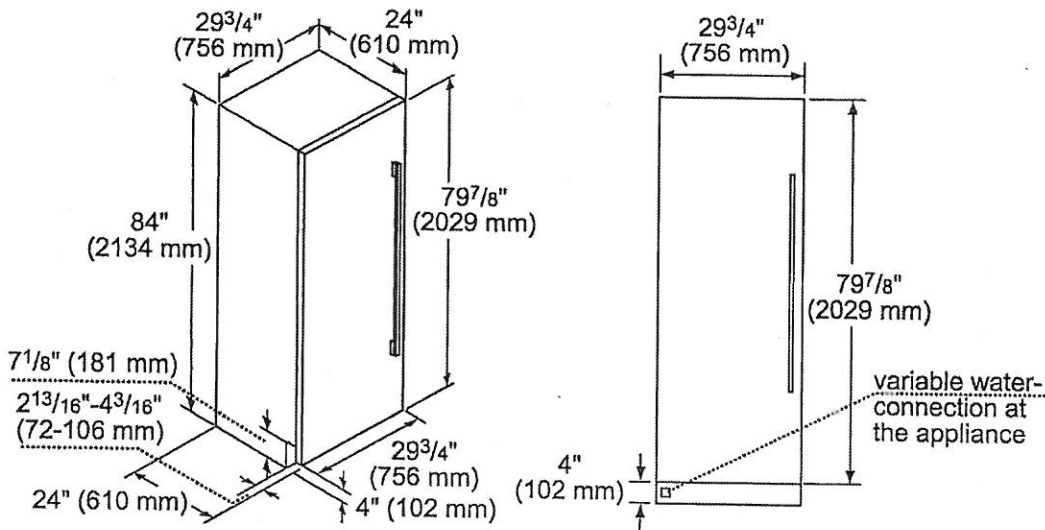


PV-85  
March 22, 2021

**T30IF905SP**  
**30-INCH BUILT-IN FREEZER COLUMN WITH**  
**INTERNAL ICE MAKER**  
FREEDOM® COLLECTION, PANEL-READY



**PRODUCT AND PANEL DIMENSIONS**



**ACCESSORIES (OPTIONAL)**

**FLAT STAINLESS STEEL DOOR PANELS**

30-Inch Flat Stainless Steel Door Panel Without Dispenser



**TFL30IR800**

For use with Handle

**TFL30IR905**

Handleless

**NOTE:** Handleless Panels should not be installed on units without the Soft-Close capability. If you are uncertain if you have a refrigeration unit with Soft-Close capability please contact our customer team by calling 1-800-735-4328.

**HANDLES**

Choose between two options:



**PR36HNDL20**

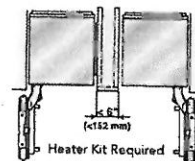
36-Inch Professional Series Handle

or



**MS36HNDL20**

36-Inch Masterpiece® Series Handle



**HEATRKIT20 - 13W @ 120V**

Freedom® Heater Kit

When two appliances are installed side-by-side a sealing kit must be used. For combinations that involve a freezer column, this sealing kit is included. For all other (non-traditional, i.e. two wine columns, two bottom freezers, etc.) side-by-side combinations or instances where any appliances are installed less than 6-inches (152 mm) apart from one another but not connected side-by-side, purchase this kit. This kit is recommended for use with any installation in areas that are subject to humidity, or located next to an outside wall.

**STORAGE**



**ICEBUCKETL**

Large Ice Bucket

**FRAMEKIT10**

Freedom® Frame Kit

For any custom column installation in 24-inch deep cutouts. With two metal side trims whose placement between the interior cutout wall and the appliance helps overcome the challenge of unfinished cabinet returns.

**FILTERS**



**REPLFLTR55**

Freedom® Water Filter


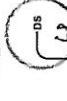
Replacement water filter for use in all freezer and bottom freezer models

These warranties give you specific legal rights and you may have other rights that vary from state to state. Limited warranty from date of purchase. For complete warranty details, refer to your Use & Care manual, or ask your dealer.

Specifications are for planning purposes only. Refer to installation instructions and consult your countertop supplier prior to making counter opening. Consult with a heating and ventilation engineer for your specific ventilation requirements. For the most detailed information, refer to installation instructions accompanying product or write to Thermador indicating the model number. Specifications are correct at time of printing. Thermador reserves the right to change product specifications or design without notice. Some models are certified for use in Canada. Thermador is not responsible for products that are transported from the U.S. for use in Canada.

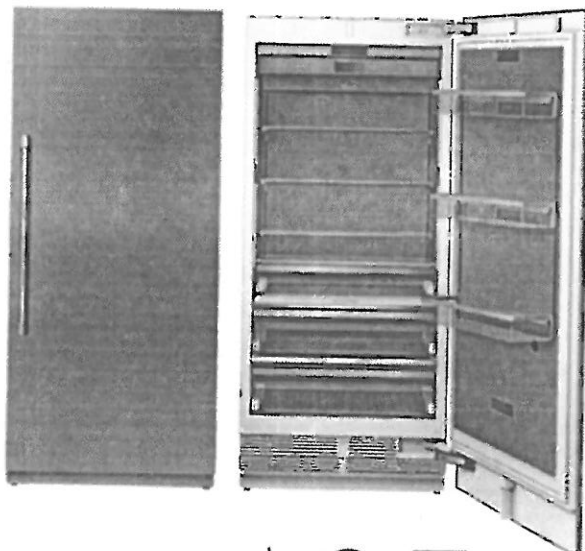
1 800 735 4328 | USA THERMADOR.COM | CANADA THERMADOR.CA | ©2020 BSH HOME APPLIANCES CORPORATION. ALL RIGHTS RESERVED.



PV-85    
March 22, 2021

**T361R905SP**  
**36-INCH BUILT-IN FRESH FOOD COLUMN**  
FREEDOM® COLLECTION, PANEL-READY

**Thermador** 



**FEATURES & BENEFITS**

- Full Stainless Steel Inner Liner
- Freedom® Hinge enables true flush design
- Auto Door Opening provides the opening of the door with just a slight push or pull
- ThermaFresh System, Humidity and Temperature controlled drawers
- SoftClose® Drawers for easy and controlled storage
- Sleek clean design for the perfect symmetry when paired with additional columns
- TFT control panel managing all your columns functions

**TEMPERATURE RANGES**

Refrigerator	36°F (2°C) to 46°F (8°C)
Temperature Controlled Drawer	30°F (-1°C) to 38°F (3°C)
SuperCool	36°F (2°C) for approximately 6 hours
Energy Saving (Economy) Mode	43°F (6°C)

**GENERAL PROPERTIES**

Home Connect™ (Wi-Fi Enabled)	Yes
Panel Ready	Yes
Reversible Door Swing	Yes
SoftClose® Door	Yes*
SoftClose® Drawers	Yes
Carbon Air Filter	Yes
Lighting	LED Sidewall and Theater Lighting
Refrigerator Shelves	4
Adjustable Shelves	3
Shelf Material	Glass w/Aluminum Profile
Full Extension Drawers @ 115° Door Opening Angle	Yes
Full Extension Drawers @ 90° Door Opening Angle	Yes
General Use Drawer	1
Humidity Managed Drawer	1
Temperature Controlled Drawer	1
Door Bins	3
Gallon Door Bins	1
Door Open Alarm	Yes
Open Door Assist	Yes
Special Modes	Sabbath, Economy, Vacation

**CAPACITY**

Total Capacity (cu. ft.)	20.6 cu. ft.
--------------------------	--------------

**PERFORMANCE**

Dedicated Evaporator & Compressor System	Yes
Freeflow® Cold Air System	Yes
SuperCool	Yes

**TECHNICAL DETAILS**

Watts (W)	350 W
Current (A)	15 A
Volts (V)	110-120 V
Frequency (Hz)	60 Hz
Power Cord Length (in.)	118
Plug Type	120V-3 Prong

**DIMENSIONS & WEIGHT**

Appliance Dimensions (H x W x D) (in.)	83 3/4"*** x 35 3/4" x 24"
Required Cutout Size (H x W x D) (in.)	84" x 36" x 25"
Net / Gross Weight (lbs)	406 / 449 lbs

**EFFICIENCY**

ENERGY STAR® Qualified	Yes
Annual Energy Consumption	312 kWh

\*To verify if you have a refrigeration unit with Soft-Close capability please contact our customer team by calling 1-800-735-4328.

\*\*Height adjustable + / -1/2" (+ / -13 mm)

PV-85  
March 22, 2021

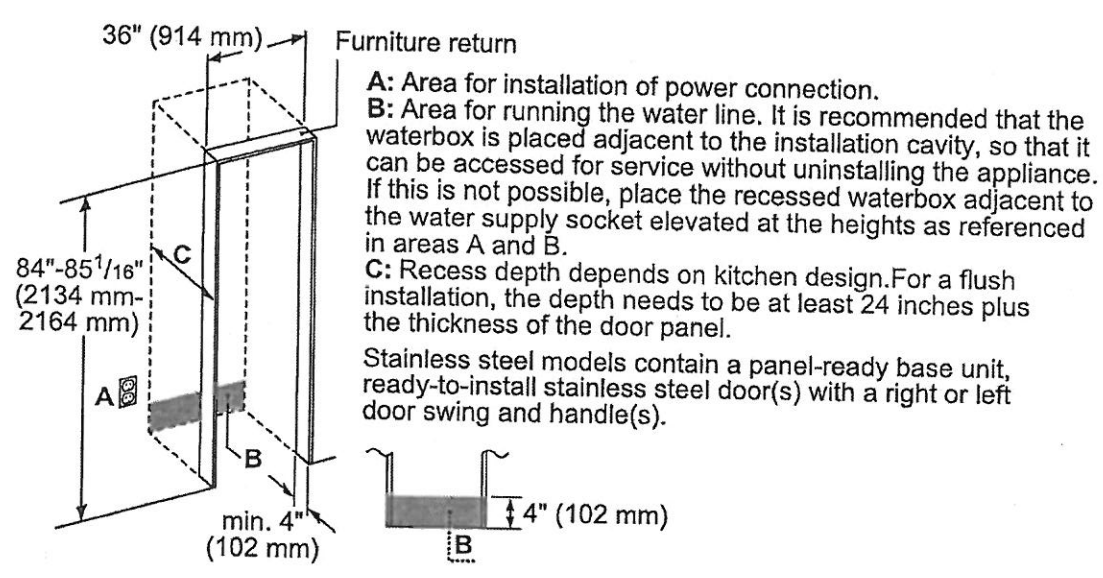
**T361R905SP**  
**36-INCH BUILT-IN FRESH FOOD COLUMN**  
FREEDOM® COLLECTION, PANEL-READY



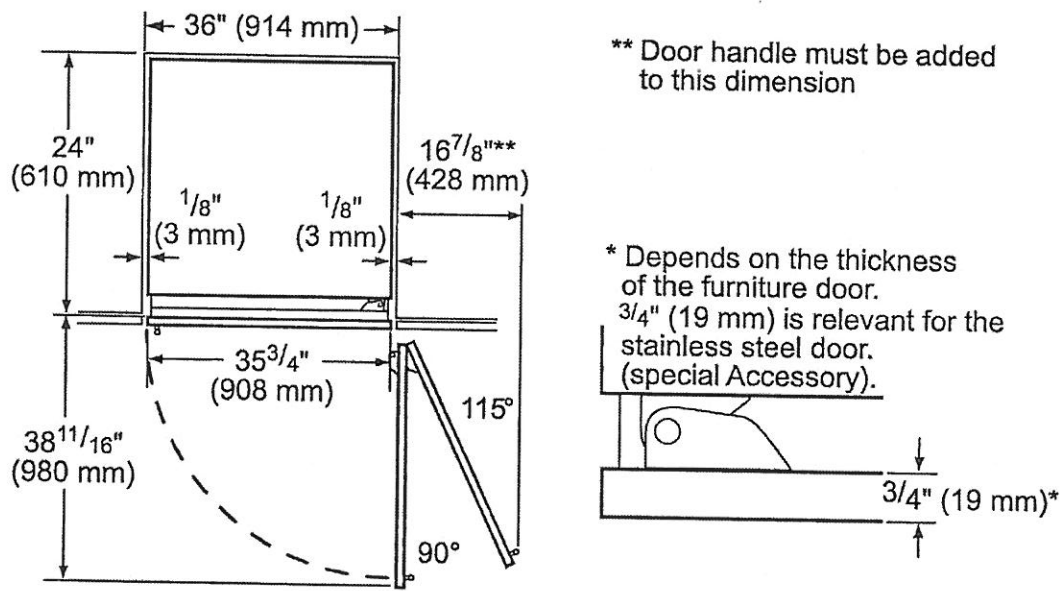
WARRANTY	
Limited, Entire Appliance, Parts and Labor on Any Part of the Refrigerator that Fails Because of a Manufacturing Defect	2 Year
Limited Warranty for Sealed Refrigeration System*; Parts and Labor	3rd to 6th Year
Limited Warranty for Sealed Refrigeration System*; Parts Only	7th to 12th Year
Limited Warranty for Stainless Steel Rust-Through	Lifetime

\*Sealed refrigeration system includes compressor, evaporator, condenser, dryer / strainer and connection tubing

CUTOUT DIMENSIONS



TOP VIEW CLEARANCE



\*\* Door handle must be added to this dimension

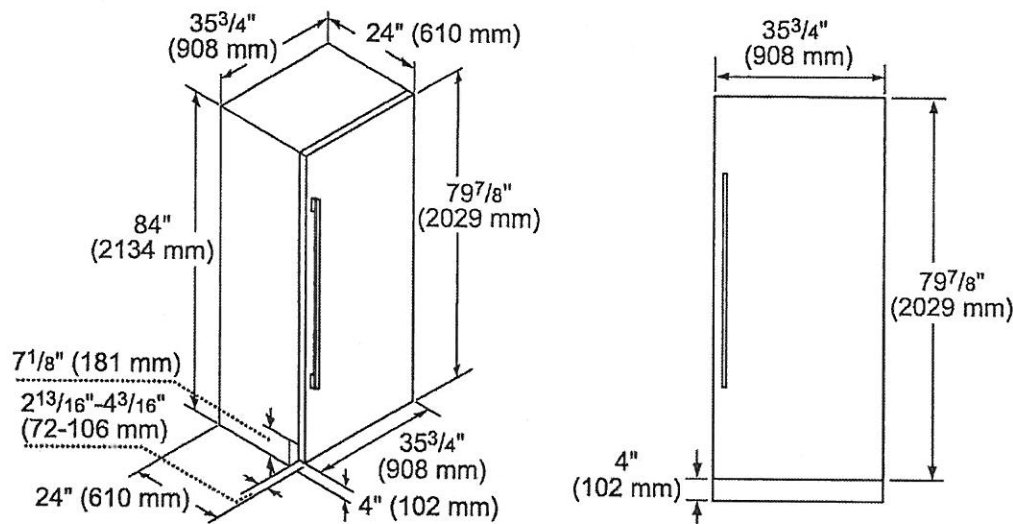
\* Depends on the thickness of the furniture door. 3/4" (19 mm) is relevant for the stainless steel door. (special Accessory).

PV-85  
March 22, 2021

**T36IR905SP**  
**36-INCH BUILT-IN FRESH FOOD COLUMN**  
FREEDOM® COLLECTION, PANEL-READY



**PRODUCT AND PANEL DIMENSIONS**



**ACCESSORIES (OPTIONAL)**

**FLAT STAINLESS STEEL DOOR PANELS**

30-Inch Flat Stainless Steel Door Panel



**TFL36IR900**  
For use with Handle  
**TFL36IR905**  
Handleless

**NOTE:** Handleless Panels should not be installed on units without the Soft-Close capability. If you are uncertain if you have a refrigeration unit with Soft-Close capability please contact our customer team by calling 1-800-735-4328.

**HANDLES**

Choose between two options:



**PR36HNDL20**  
36-Inch Professional Series Handle

or



**MS36HNDL20**  
36-Inch Masterpiece® Series Handle

**STORAGE**



**SPRODBIN10**  
Small Produce Bin



**LPRODBIN10**  
Large Produce Bin



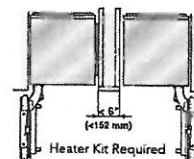
**36PRODRAIL**  
36-Inch Produce Railing



**36HFGALBIN**  
36-Inch Half Gallon Bin

**FRAMEKIT10**

**Freedom® Frame Kit**  
For any custom column installation in 24-inch deep cutouts. With two metal side trims whose placement between the interior cutout wall and the appliance helps overcome the challenge of unfinished cabinet returns.



**HEATRKIT20 – 13W @ 120V**

**Freedom® Heater Kit**  
When two appliances are installed side-by-side a sealing kit must be used. For combinations that involve a freezer column, this sealing kit is included. For all other (non-traditional, i.e. two wine columns, two bottom freezers, etc.) side-by-side combinations or instances where any appliances are installed less than 6-inches (152 mm) apart from one another but not connected side-by-side, purchase this kit. This kit is recommended for use with any installation in areas that are subject to humidity, or located next to an outside wall.

These warranties give you specific legal rights and you may have other rights that vary from state to state. Limited warranty from date of purchase. For complete warranty details, refer to your Use & Care manual, or ask your dealer.

Specifications are for planning purposes only. Refer to installation instructions and consult your countertop supplier prior to making counter opening. Consult with a heating and ventilation engineer for your specific ventilation requirements. For the most detailed information, refer to installation instructions accompanying product or write to Thermador indicating the model number. Specifications are correct at time of printing. Thermador reserves the right to change product specifications or design without notice. Some models are certified for use in Canada. Thermador is not responsible for products that are transported from the U.S. for use in Canada.

1 800 735 4328 | USA THERMADOR.COM | CANADA THERMADOR.CA | ©2020 BSH HOME APPLIANCES CORPORATION. ALL RIGHTS RESERVED.

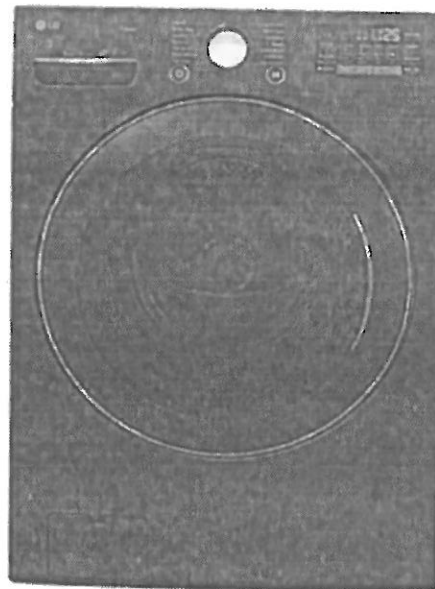
PV-85  
March 22, 2021

HOME APPLIANCES

LG LAUNDRY

WM3800HBA

5.2 cu.ft. Capacity Front Load Washer



TurboWash™ Technology  
Steam Technology  
SmartThinQ® Technology (Wi-Fi Enabled)  
6Motion™ Technology  
2018 ENERGY STAR Most Efficient  
Inverter BLDC Pump Motor  
SmartDiagnosis™



Enjoy new ways to control your home with LG smart appliances

SmartThinQ®

CAPACITY	
Capacity	5.2 cu.ft.
APPEARANCE	
Design Look	Front Control
Intelligent Electronic Controls with Dual LED Display	-
Touch Buttons	-
Dial-A-Cycle™	-
ENERGY	
2018 Energy Star Most Efficient	-
CEE Tier	2
WASH PROGRAMS	
No. of Programs	14
Normal, Heavy Duty, Bedding, Sanitary, Allergiene™, Bright Whites™, Tub Clean, Deep Wash, Perm. Press, Delicates, Towels, Speed Wash, Sportswear, Downloaded	
No. of Options	12
Steam, Fresh Care, Pre Wash, Remote Start, Delay Wash, Wi-Fi, Add Garments, TurboWash™, Cold Wash, Extra Rinse, Rinse+Spin, Control Lock	
No. of Wash/Rinse Temps	5
Extra Hot, Hot, Warm, Cold, Tap Cold	
Spin Speeds	Extra High, High, Medium, Low, No Spin
No. of Water Levels	Automatically adjusts to the size of load
No. of Soil Levels	5
FABRIC CARE FEATURES	
ColdWash™ Option	-
SenseClean™ System	-
Steam Technology	-
Allergiene™ Cycle	-
Sanitary Cycle	-
CONVENIENCE FEATURES	
4 Tray Dispenser	Prewash, Main Wash (with liquid detergent cup), Bleach, Fabric Softener
TrueBalance™ Anti-Vibration System	-
SmartDiagnosis™	-
LoadSense	-
Status Indicator(s)	-
End of Cycle Signal	-
Child Lock	-
Auto Suds Removal	-
Forced Drain System	-
LoDecibel™ Quiet Operation	-
Easy Loading Tilt™	-
Wi-Fi Connectivity	-
Energy Monitoring	-

MOTOR AND AGITATOR

Motor Type	Direct Drive Motor
Motor Speed	Variable
Max RPM	1,300
Axis	Horizontal

MATERIALS AND FINISHES

NeveRust™ Stainless Steel Drum	-
Cabinet	PCM
Control Panel	Plastic
Top Plate	Painted Steel
Door/Rim	Glass / Chrome (with Dark Blue Tinted Round Cover)
Available Colours	Black Steel (B)

POWER SOURCE

Ratings	UL Listed
Electrical Requirements	120V, 10 Amps
Type	Electric

OPTIONS / ACCESSORIES

Pedestal	WDP4B
Pedestal Dimensions (WxHxD)	27" x 14 1/8" x 28 2/5"
SideKick™ Pedestal Washer	WD100CB
SideKick™ Pedestal Washer (WxHxD)	27" x 14 1/8" x 30 3/4" (50 9/16" with door open)
Stacking Kit	KSTK1
Hose Included	No

DIMENSIONS

Product (WxHxD)	27" x 39" x 30 1/4" (55"D with door open)
Carton (WxHxD)	29 1/2" x 43 5/16" x 31 5/16"
Weight (Product/Carton)	187.4 lbs / 209.4 lbs

LIMITED WARRANTY

1 Year Parts and Labour, 3 Years on Drum, 10 Years on Direct Drive Motor



UPC CODES

WM3800HBA Washer (Black Steel)	772454071720
DLEX3900B Electric Dryer (Black Steel)	772454071737
DLGX3901B Gas Dryer (Black Steel)	772454071744

© 2018 LG Electronics Canada, Inc. All rights reserved. "LG Life's Good" is a registered trademark of LG Corp. All other product and brand names are trademarks or registered trademarks of their respective owners. Design, features and specifications are subject to change without notice. Non-metric weights and measurements are approximate. Some features may require Internet access. Content and services may vary by product and are subject to change without notice. 05/01/2018  
20 Norelco Drive, North York, Ontario M9L 2X6 Tel: 647-253-6300 | Customer Service & Parts 1-888-542-2623

LG.com



PV-88    
March 22, 2021

## Choosing the Proper Location

Install the washer on a solid floor that is strong and rigid enough to support the weight of the washer, even when fully loaded, without flexing or bouncing. If the floor has too much flex, you may need to reinforce it to make it more rigid. If the floor is not solid, it may cause severe vibration and noise.

### NOTE

- Before installing the washer, make sure the floor is clean, dry and free of dust, dirt, water and oil so the washer feet cannot slide easily. Leveling feet that can move or slide on the floor can contribute to excess vibration and noise due to poor contact with the floor.
- If a drip pan must be used, take extra care to follow the instructions provided with the drip pan and make sure the leveling feet are adjusted for firm and even contact with the pan. Use of drip pans and failure to properly level the machine may result in increased vibration and noise during operation.
- Allow for sufficient space between the walls and the washer for installation.

## Power Outlet

- The power outlet must be within 60 inches (1.5 m) of either side of the washer.
- The appliance and outlet must be positioned so that the plug is easily accessible.
- Do not overload the outlet with more than one appliance.
- The outlet must be grounded in accordance with current electrical wiring codes and regulations.
- Use a time-delay fuse or circuit breaker.

### NOTE

- It is the personal responsibility and obligation of the product owner to have a proper outlet installed by qualified service personnel.

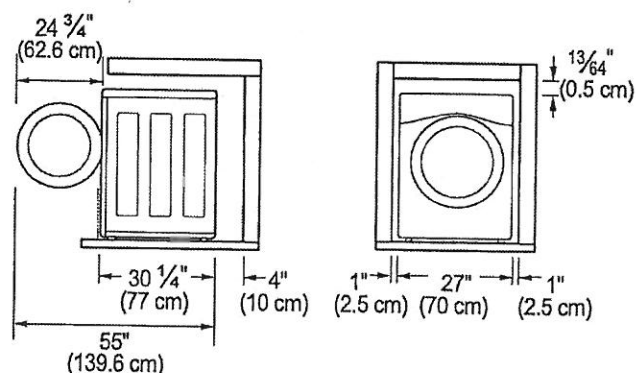
## Flooring

- To minimize noise and vibration, the washer must be installed on a solidly constructed floor.
- Allowable slope under the entire washer is a maximum 1 inch (2.5 cm) difference from side to side or from front to back.
- Installing on carpeting and soft tile surfaces is not recommended.
- Never install the washer on a platform or weakly supported structure.

### NOTE

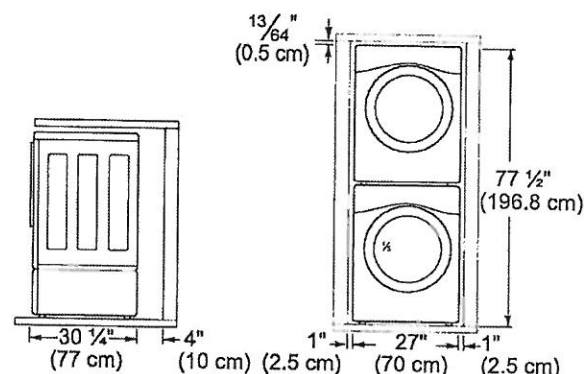
- The washer must be installed on firm flooring to minimize vibration during the spin cycle. Concrete flooring is best, but a wood floor is sufficient, provided it is built to FHA standards.

## Floor Installation





To ensure sufficient clearance for water lines, the drain line and airflow, allow minimum clearances of at least 1 inch (2.5 cm) at the sides and 4 inches (10 cm) behind the unit. Be sure to allow for wall, door, or floor moldings that may increase the required clearances.

## Stacked or Pedestal Installation



### NOTE

- Refer to the instructions packaged with the optional pedestal kit before installing with a pedestal kit.
- Do not use a drip pan with a pedestal or pedestal washer installation as it can block the drawer. Using a drip pan may result in increased vibration and noise during operation.

PV-85    
March 22, 2021

HOME APPLIANCES

LG LAUNDRY

DLEX3900\_ / DLGX3901\_

7.4 cu.ft. Front Load Dryer with TurboSteam™



KEY FEATURES

- 7.4 cu. ft. Capacity
- TurboSteam™ Technology
- LG SmartThinQ® Technology
- Sensor Dry System
- FlowSense™ Duct Clogging Indicator
- ENERGY STAR® Qualified
- Electronic Control Panel with Dual LED Display

AVAILABLE COLORS



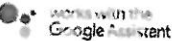
SMART APPLIANCE



Enjoy new ways to control your home with LG smart appliances

- Start the laundry while you're out shopping
- Get alerts when the cycle is finished
- Works with the LG SmartThinQ® app

SmartThinQ®



PRODUCT FEATURES

SUMMARY		FABRIC CARE FEATURES		POWER SOURCE	
Type	Front Load Dryer	Sensor Dry	Yes	Ratings	CSA Listed
Capacity	7.4 cu. ft.	Precise Temperature Control with Variable Heater	Yes	Electrical Requirements	Electric: 240V 30 Amps Gas: 120V, 15 Amps
Matching Washer	WM3900HWA / WM3900HBA	Steam	TurboSteam™	Type	Electric / Gas
Sensor Dry	Yes	CONVENIENCE FEATURES		BTU Rating	10,000 Feet
Colors	White (W) / Black Steel (B)	3 Minute Installation Check	Yes	OPTIONS	
APPEARANCE		LoDecibel™ Quiet Operation	Yes	LP Conversion Kit	383EEL3002D
Intelligent Electronic Controls with LED Display	Yes	End of Cycle Signal	Yes	Side Venting Kit	383EEL9001B
Dial-A-Cycle™	Yes	Drum Light	Yes	Pedestal	WDP4W / WDP4B
Touch Buttons	Yes	Reversible Door	Yes	Pedestal (WxHxD)	27 x 14 1/8 x 30 3/4 (50 1/2 D with door open)
ENERGY		FlowSense™ Duct Clogging Indicator	Yes	DIMENSIONS	
ENERGY STAR® Qualified	Yes	Wrinkle Care Option	Yes	Product (WxHxD)	27" x 38 11/16" x 30"
DRYER PROGRAMS		Child Lock	Yes	Depth with Door Open	51"
No. of Programs	14	Venting Option	Electric: 4 Way Venting Gas: 3 Way Venting	Carton (WxHxD)	29 19/32" x 43 3/8" x 31 3/8"
	Normal, Heavy Duty, Bedding, Small Load, Anti Bacterial, SteamSanitary™, SteamFresh™, Perm Press, Delicates, Sportswear, Towels, Speed Dry (Manual Dry), Air Dry (Manual Dry), Downloaded	4 Adjustable Legs	Yes	Weight (Product)	Electric: 123lbs Gas: 125.7lbs.
DRYER OPTIONS		Remaining Time Display/Status Indicator(s)	Yes	Weight Carton	Electric: 136.2lbs. Gas: 138.9lbs.
No. of Options	13	SmartThinQ® SMART FEATURES		LIMITED WARRANTY	
	More Time, Less Time, Damp Dry Signal, Wrinkle Care, Control Lock, Custom Program, PGM Save, Wi-Fi Connect, Energy Saver, TurboSteam™, Reduce Static, Smart Grid, Remote Start	SmartDiagnosis™	Yes	Parts & Labor	1 Year
DRYER DETAILS		Wi-Fi Connectivity	Yes	UPC CODES	
Temperature Settings	High, Medium High, Medium, Low, Ultra Low	Remote Control	Yes	DLEX3900W (Electric / White)	048231025195
Drying Levels	Very Dry, More Dry, Normal Dry, Less Dry, Damp Dry	Cycle Monitoring and Notification	Yes	DLEX3900B (Electric / Black Steel)	048231026437
Manual Dry Times	60 min., 50 min., 40 min., 30 min., 20 min., More Time/Less Time	Energy Monitoring	Yes	DLGX3901W (Gas / White)	048231025201
		MATERIALS AND FINISHES		DLGX3901B (Gas / Black Steel)	048231026444
		Aluminized Alloy Steel Drum	Yes		
		Tub Rear	Painted		
		Cabinet	Painted Steel		
		Door	Round w/ Chrome trim		

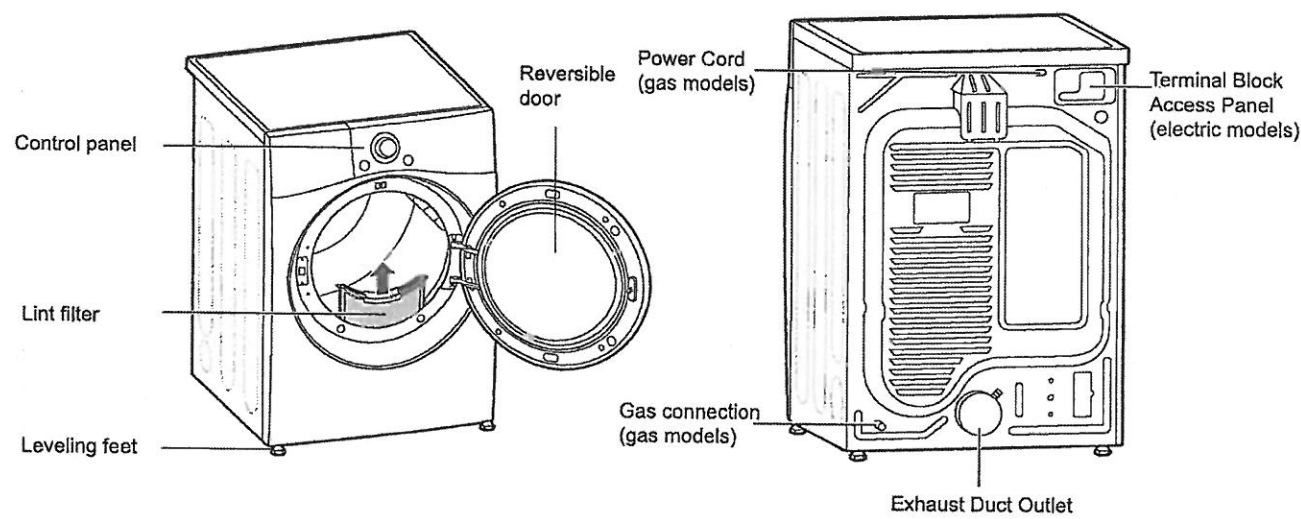
© 2019 LG Electronics USA, Inc. All rights reserved. "LG Life's Good" is a registered trademark of LG Corp. All other product and brand names are trademarks or registered trademarks of their respective owners. Design, features and specifications are subject to change without notice. Non-metric weights and measurements are approximate. Some features may require Internet access. Content and services may vary by product and are subject to change without notice. 2/7/19

PV-85      (DS) (L)

March 22, 2021

# PRODUCT OVERVIEW

## Parts



## Product Specifications

The appearance and specifications listed in this manual may vary due to constant product improvements.

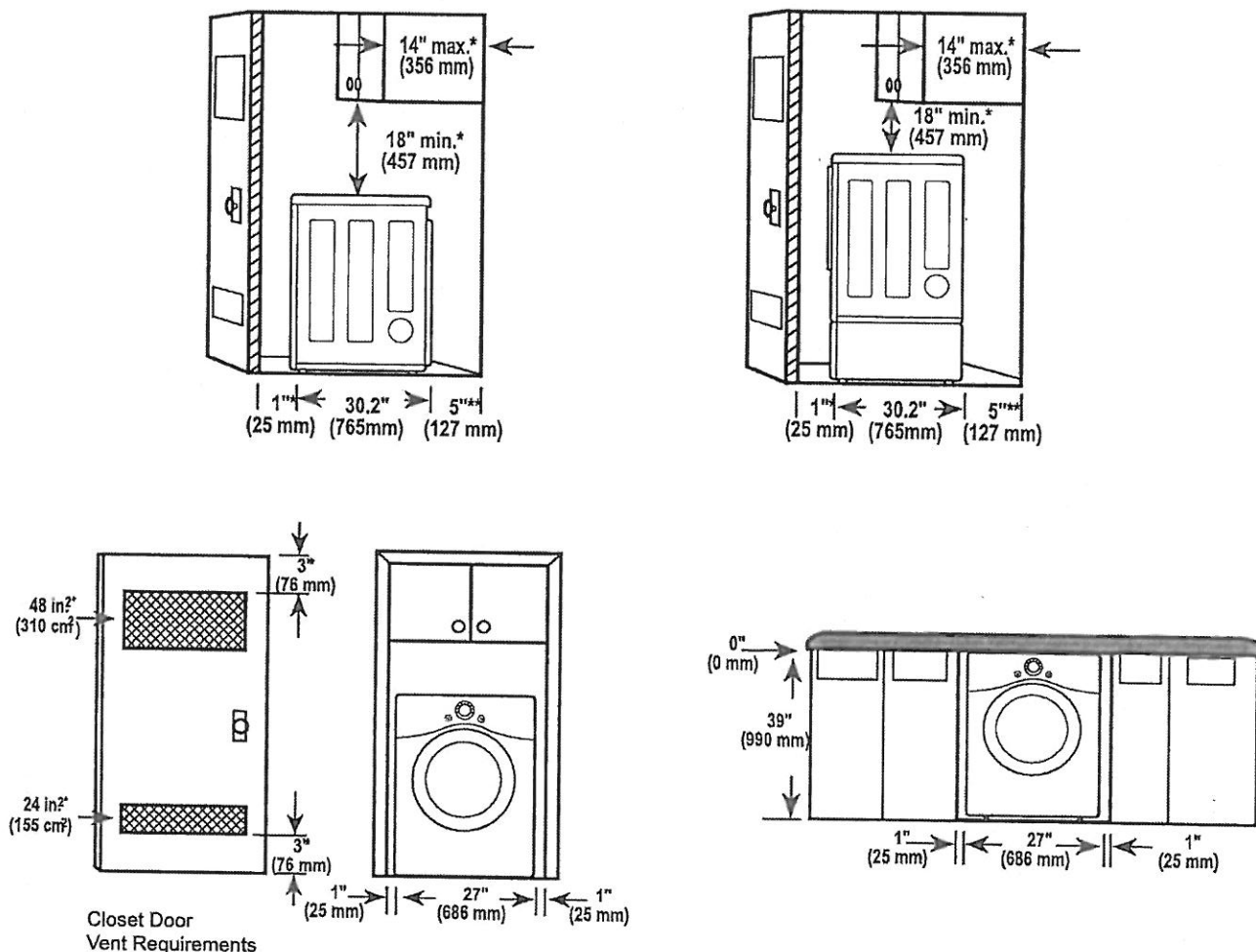
Dryer Models		DLE3500* / DLG3501*	DLEX3700* / DLGX3701*	DLEX3900* / DLGX3901*
Description		Non-steam Dryer	Steam Dryer	Steam Dryer
Electrical requirements		Please refer to the rating label for detailed information.		
Gas requirements		NG: 4 - 10.5-inch (10.2 - 26.7 cm) WC LP: 8 - 13-inch (20.4 - 33.1 cm) WC		
Dimensions		27" (W) X 30.2" (D) X 39" (H), 51.4" (D with door open) 68.6 cm (W) X 76.5 cm (D) X 99 cm (H), 130.5 cm (D with door open)		
Net weight		Gas : 123.02 lb (55.8kg) - 126.77 lb (57.5kg) Electric : 120.15 lb (54.5kg) - 123.46 lb (56kg)		
Drying capacity	Steam Cycle	-	IEC 7.4 cu.ft. (8 lb/3.6 kg)	
	Normal Cycle	IEC 7.4 cu.ft. (22.5 lb/10.2 kg)		

**NOTE**

Model numbers can be found on the cabinet inside the door.

## 12 INSTALLATION

### Clearances



### Installation Spacing for Recessed Area or Closet Installation

The following clearances are recommended for this dryer. This dryer has been tested for clearances of 1 inch (2.5 cm) on the sides and rear. Recommended clearances should be considered for the following reasons:

- Additional clearances should be considered for ease of installation and servicing.
- Additional clearances should be considered on all sides of the dryer to reduce noise transfer. For closet installation, with a door, minimum ventilation openings in the top and bottom of the door are required. Louvered doors with equivalent ventilation openings are acceptable.

#### Closet Ventilation Requirements

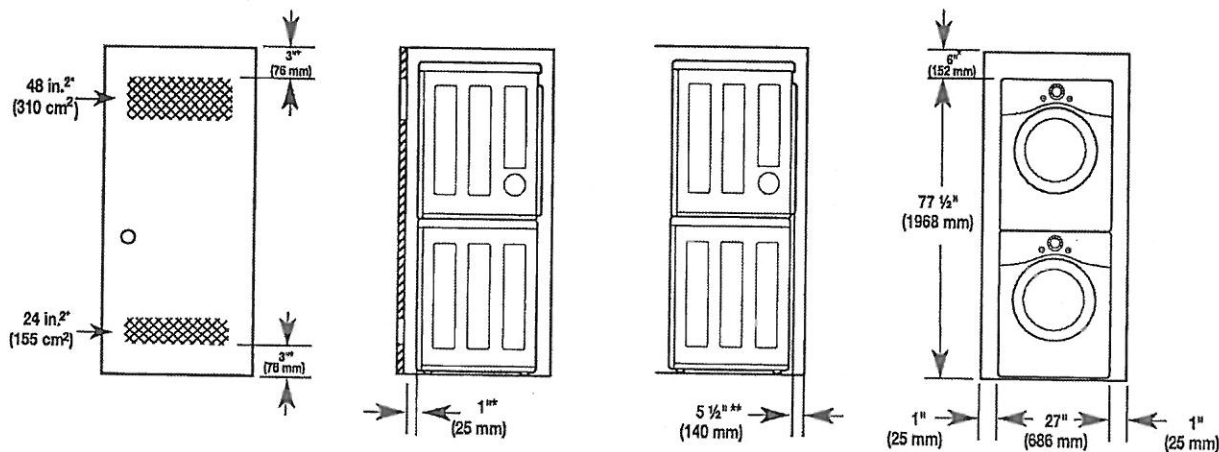
Closets with doors must have both an upper and lower vent to prevent heat and moisture buildup in the closet. One upper vent opening with a minimum opening of 48 sq. in. (310 cm²) must be installed no lower than 6 feet above the floor. One lower vent opening with a minimum opening of 24 sq. in. (155 cm²) must be installed no more than one foot above the floor. Install vent grills in the door or cut down the door at the top and bottom to form openings. Louvered doors with equivalent ventilation openings are also acceptable.

#### NOTE

- There should be at least a little space around the dryer (or any other appliance) to eliminate the transfer of vibration from one appliance to another. If there is enough vibration, it could cause appliances to make noise or come into contact, causing paint damage and further increasing noise.

PV-85  
March 22, 2021

Installation Spacing for Recessed Area or Closet, with Stacked Washer and Dryer



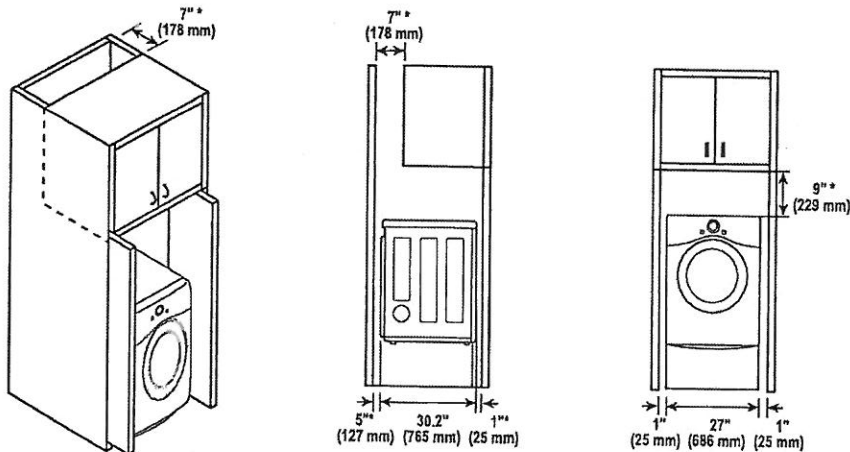
\* Required spacing

\*\* For side or bottom venting, 2-inch (5.1 cm) of spacing is allowed.


Installation Spacing for Cabinet

For cabinet installation with a door, minimum ventilation openings in the top of the cabinet are required.

\* Required spacing





PV-85   
March 22, 2021

# SAXONY

SPRBC056D1SS

*Silhouette*  
PROFESSIONAL  
www.silhouetteappliances.com

## BENEFITS

Model #	SPRBC056D1SS
Capacity-Wine Compartment	Stores up 126 beverage cans and 6 bottles of wine
Volume	5.6 cu. ft.
Temperature Range	34F – 50F (1C-10C)
Noise	39 db
Door Frame	304 grade seamless stainless steel
Cabinet	Matte black textured steel
Interior Finish	Matte black
Door Style	Single door
Reversible Door Swing	Yes
Door Hinge	Hidden for flush fit installation
Door Glass	Low E, dual pane argon filled
Door Handle	Pro-style, 20% longer than previous model
Door Lock	Yes
Shelving Material	3 adjustable clear glass shelves
Lighting Option 1	On/Off with door opening
Lighting Option 2	On 100% illumination for 2 hours
Lighting Option 3	On 50% illumination for 2 hours
Light Colours	Choose between Arctic white or Azure blue
Controls	Digital seamless capacitive touch
Temperature Recall	Yes reverts to last set temperature after power outage
Alarm	Yes, temperature and door ajar
Sabbath Mode	Yes

## PRODUCT SPECIFICATIONS

UPC 067638024273

### Unit Dimensions

Width 23.8" in.  
Min. Height 34" in.  
Max. Height 34.7" in.  
Depth 23.8" in.  
(DOES NOT INCLUDE HANDLE)

### Installation

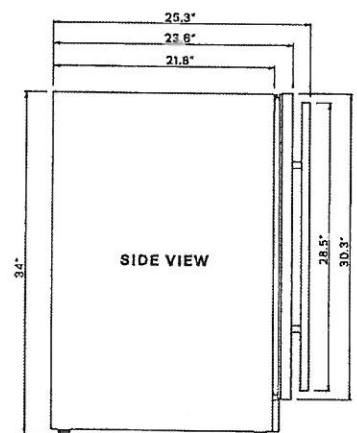
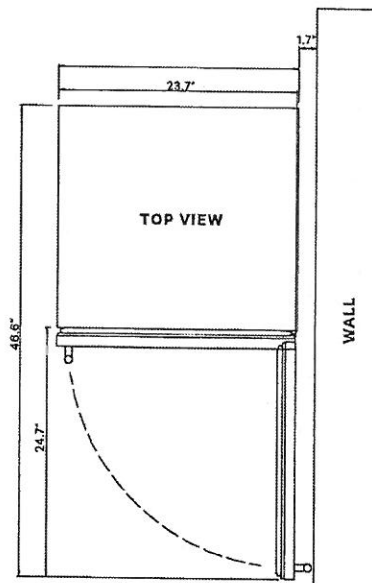
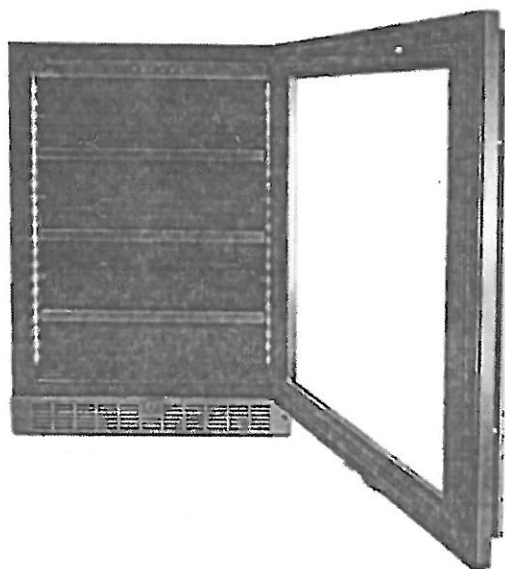
Gross Weight: 136 lbs.  
Built-in under counter or free standing  
Refrigerator: R600  
Size: Min 24" wide opening required

### AC Power

115V, 60Hz at MAX 1.5A  
Power cord length: 6.5 ft.

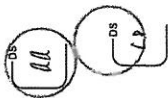
### Platinum Warranty

2 year parts and labor coverage



\*based on standard 750ml bordeaux style bottle

Danby USA 1-866-649-3309 Danby Canada 1-800-461-4492  
03.09.20-V4

PV-85   
March 22, 2021

## INSTALLATION INSTRUCTIONS

### PREPARING THE ENCLOSURE

Gloves and safety goggles should be worn during installation.

It is not recommended to install the appliance into a corner or directly beside a wall. The door will need to be opened more than 90° to allow full extension of the shelves. If it is necessary to place the unit next to a wall or in a corner, leave at least 2-4 inches (5-10 cm) of space between the wall and the appliance to allow for the door opening.

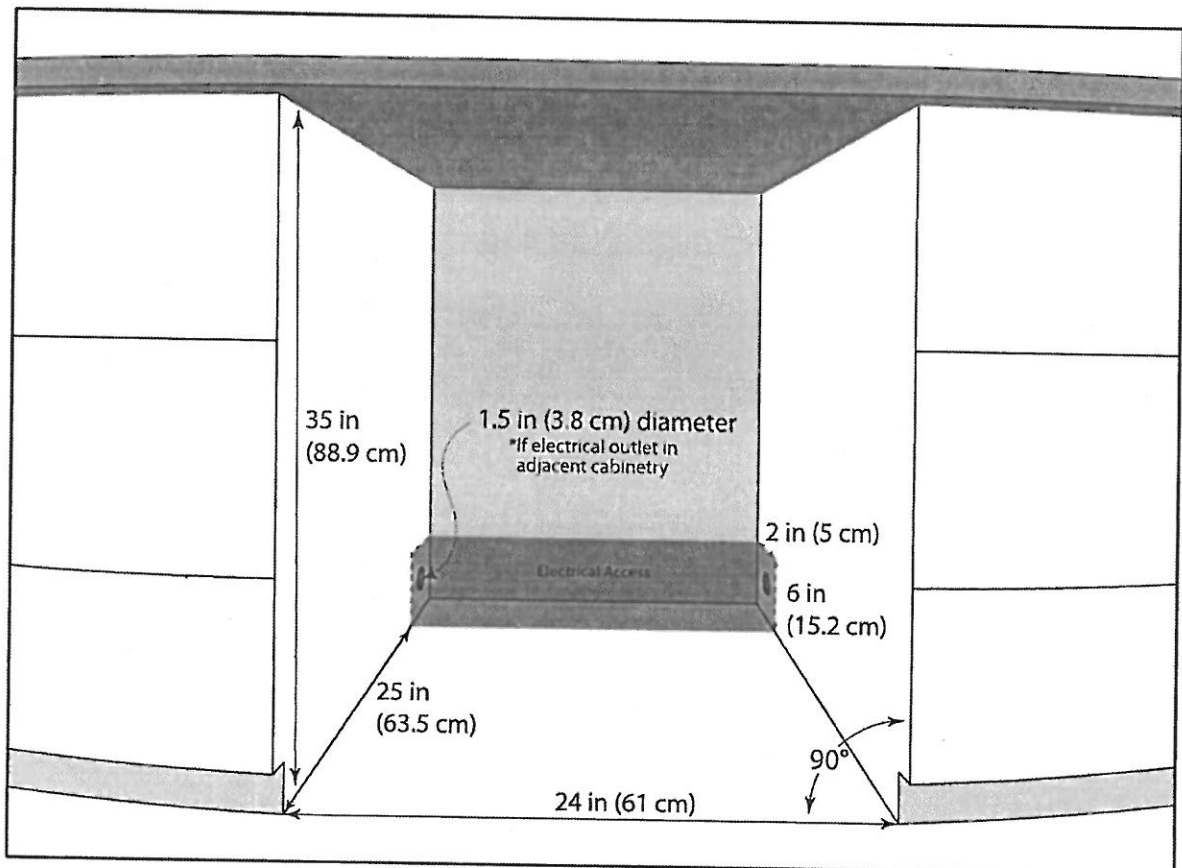
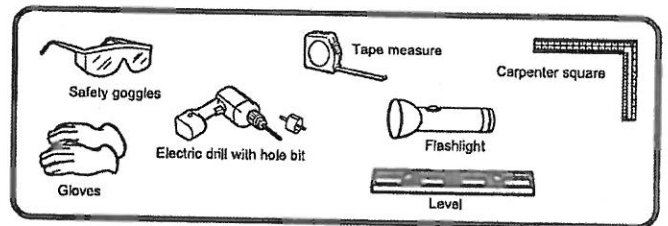
The cabinet opening must be at least 24 inches (61 cm) wide by 35 inches (88.9 cm) high by 25 inches (63.5 cm) deep.



**Note:** The listed depth requirement is assuming that the electrical outlet is located in the adjacent cabinetry or flush mounted in the rear wall, not surface mounted inside the enclosure.

If the electrical outlet is located inside adjacent cabinetry, cut a 1.5 inch (3.8 cm) diameter hole to admit the power cord. If the cabinet wall is metal, the hole edge must be covered with a bushing or grommet.

### REQUIRED TOOLS

- Safety goggles
- Gloves
- Tape measure
- Carpenter square
- Level
- Flashlight
- Electric drill with hole bit





PV-85    
March 22, 2021



Microwave Ovens   Countertop  
**Countertop NN-ST681SC**

Model Number		NN-ST681SC
Type		Mid-size
Capacity		1.2 cu.ft.
Technology		Inverter®
Power	Microwave	1,200 W
	Grill	NA
	Grill Power Level	NA
	Convection	NA
Combination	Microwave + Grill	NA
	Power Level	NA
Design	Colour	Stainless Steel
	Dial / Button	-
	Door Release	Push Open
	Finish	Half Mirror
Control Panel	Panel Design	Touch pad
Display	Type	4 Digit
	Colour	Green
	Back Light	yes
Power Level + Other.	Power Level	10
	Delay Start	yes
	Clock	12 Hour
	Child Lock	yes
	Stage Cooking	3 Stage
Menu	Sensor	yes

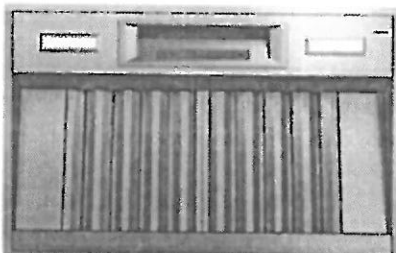
PV-85    
 March 22, 2021

		Turbo Defrost	yes
		Popcorn	yes
		Keep Warm	yes (up to 30 minutes)
		Quick Min	yes (up to 10 minutes)
		Auto Reheat	Sensor Reheat
		# of Auto Cook Categories	12
Turntable Size			340 mm
Accessory			Glass Tray
Trim Kit			NNTK621S
Power Source			120 V / 60 Hz
Power Consumption	Microwave		1,480 W
	Grill		NA
	Combination		NA
Cooking Power	Microwave		1,200 W
	Grill		NA
Dimensions	Outside (W × D × H)		525 × 401 × 310 mm 20.7 × 15.8 x 12.3 inch
	Oven (W × D × H)		355 × 365 × 251 mm 13.9 x 14.4 x 9.9 inch
Weight	Net		11.5 kg
	Shipping		13.0 kg
NOTE		Specifications are subject to change without notice.	

PV-85  
March 22, 2021

VCIN36GWS  
36-INCH CUSTOM INSERT  
PROFESSIONAL® SERIES

Thermador



FEATURES & BENEFITS

- Revel in creative freedom with Professional® Series custom inserts that can blend in with cabinetry or make a bold statement
- ★ Equipped with the Thermador Connected Experience by Home Connect™
- Powerfully Quiet® system accepts integral, inline, and remote blowers
- Beautiful illumination with multi-level, vivid LED lights
- Features automatic mode, delay shut-off, and check filter light

ACCESSORIES (OPTIONAL)

25 ft. Blower Connector Cable - EXTNCB25W

For use with the following inline and remote blowers: VTR630W, VTR1030W, VTR1330W, VTI610W, VTI1010W

Roofplates

RFPLT600P - For use with 600 CFM remote blower VTR630W

RFPLT1000P - For use with 1000 CFM remote blower VTR1030W and 1300 CFM blower VTR1330W

VCIN Trim Notes

NOTE: VCIN\_GWS series custom insert models include hood trim pieces to complete the installation.

Remote Control Panel

REMCPUW - Ability to vertically install on cabinetry or wall to control hood in a convenient location



GENERAL PROPERTIES

Features

Multi-Level LED Lights with Fading Transitions, Automatic Mode, Check Filter Reminder Light, Delay Shut-Off

Operating Mode	Ducted
Maximum CFM	Blower Sold Separately
Number of Speed Settings	4-Stage
Number of Lights	2
Bulb Type	LED
Light Lumens	100 – 150
Light Color (°K)	3500 – 4000
Total Power of the Lamps (W)	2.4 W
Damper Included	Yes
Grease Filter Material	Washable Stainless Steel
Grease Filter Type	Stainless-Steel Commercial Style Baffle Filter
Home Connect™ (Wi-Fi Enabled)	Yes

TECHNICAL DETAILS

Watts (W)	See Chart on Page 3
Current (A)	See Chart on Page 3
Volts (V)	120 V
Frequency (Hz)	60 Hz
Plug Type	Fixed Connection
Power Cord / Conduit Length (in)	Direct Wire at Junction Box

DIMENSIONS & WEIGHT

Overall Appliance Dimensions (Width of Canopy Included) (HxWxD) (in)	12 13/16" x 33 3/4" x 22"
Minimum Required Distance Above Gas / Electric Cooking Surface	30" Electric / 30" Gas
Diameter of Air Duct (in.) Top	10"
Net Weight (lbs)	54 lbs

ACCESSORIES (REQUIRED)

Blower (Sold Separately)

BLOWER OPTIONS



Remote Blowers (Mounted to Roof or External Wall)	VTR630W - 600 CFM
	VTR1030W - 1000 CFM
	VTR1330W - 1300 CFM
Inline Blowers (Mounted Between Kitchen and External Wall)	VTI610W - 600 CFM
	VTI1010W - 1000 CFM
Integrated Blower (Mounted in Hood)	VTN630W - 600 CFM
	VTN1090R - 1000 CFM

WARRANTY

Limited Warranty Parts and Labor	2 Year
----------------------------------	--------

★ THERMADOR® EXCLUSIVE



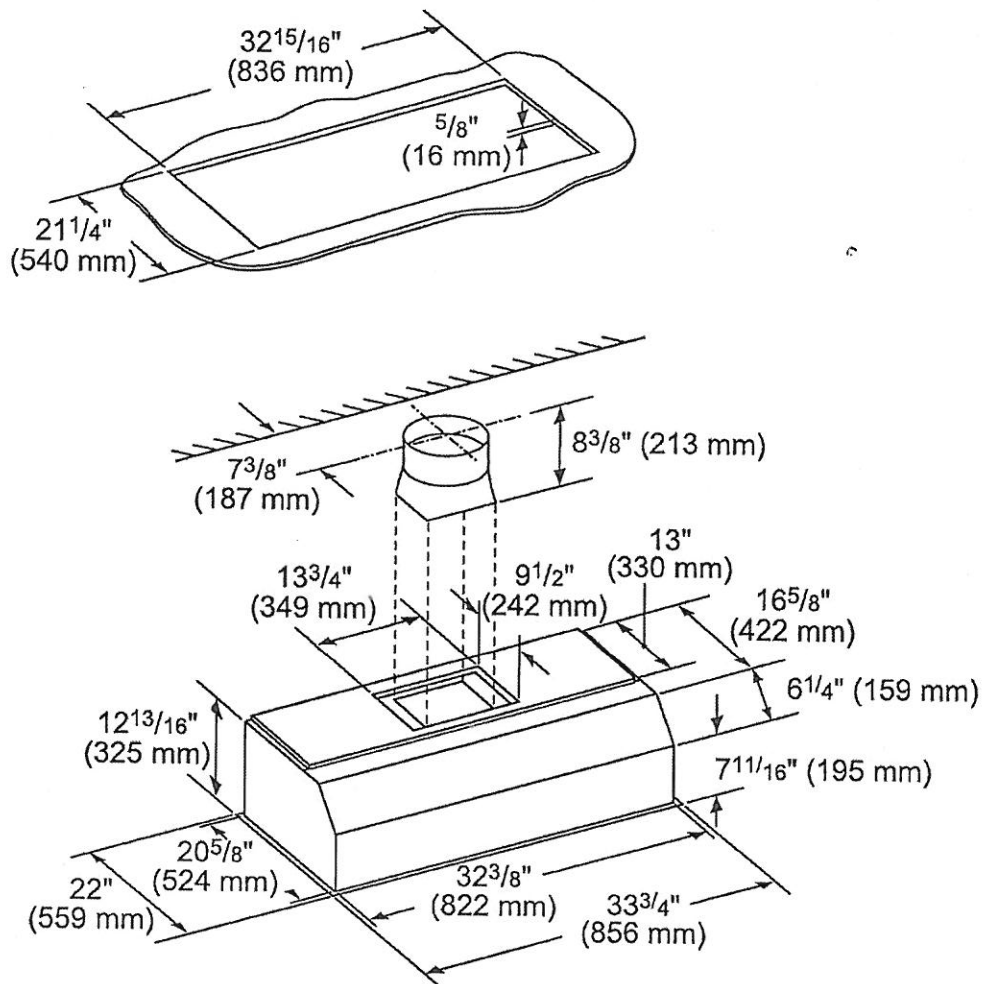
PV-85    
March 22, 2021

**VCIN36GWS**  
**36-INCH CUSTOM INSERT**  
PROFESSIONAL® SERIES



**Thermador** 

**HOOD DIMENSIONS**

NOTE: VCIN Custom Insert models include hood trim pieces.



measurements in inches (mm)

PV-85    
March 22, 2021

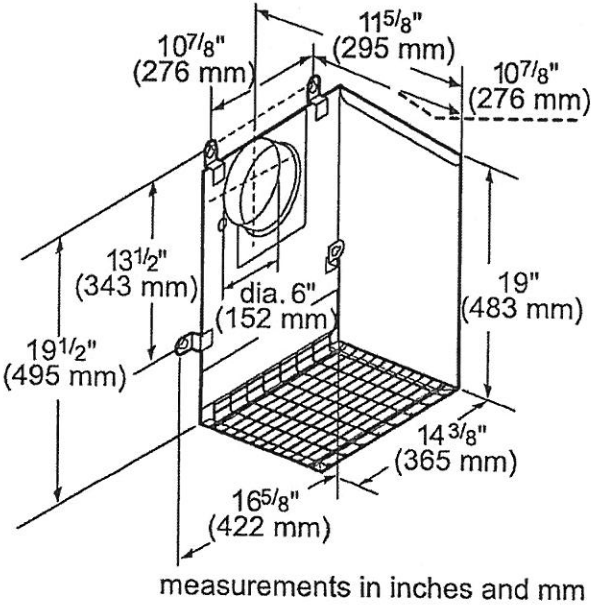
**VCIN36GWS**  
36-INCH CUSTOM INSERT  
PROFESSIONAL® SERIES



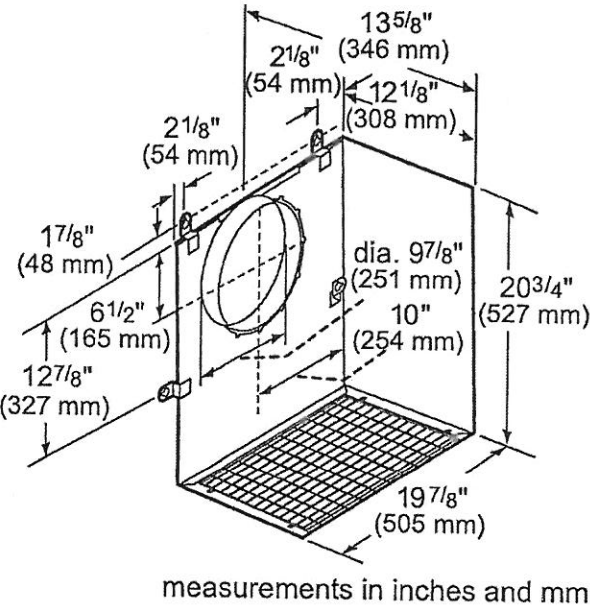
MODEL	DESCRIPTION		ELECTRIC LOAD					
			VTN630W	VTN1090R	VTI610W	VTI1010W	VTR630W	VTR1030W
VCIN36GWS	36" Custom Insert	Amps	4.0	7.4	5.9	7.8	5.9	7.8
		Watts	480	888	708	936	708	936

REMOTE BLOWERS (MOUNTED TO ROOF OR EXTERNAL WALL)

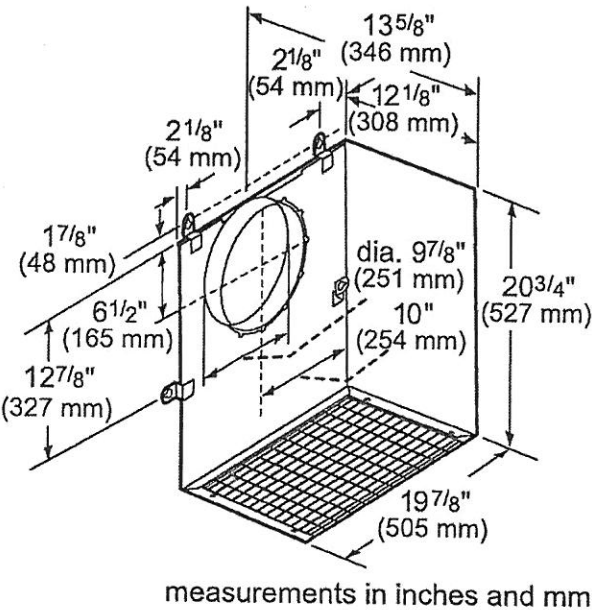
VTR630W-600 CFM





VTR1030W-1000 CFM



VTR1330W-1300 CFM



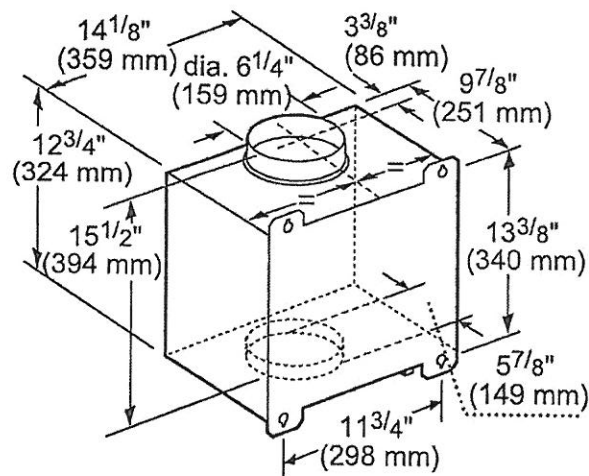
PV-85    
March 22, 2021

**VCIN36GWS**  
**36-INCH CUSTOM INSERT**  
PROFESSIONAL® SERIES



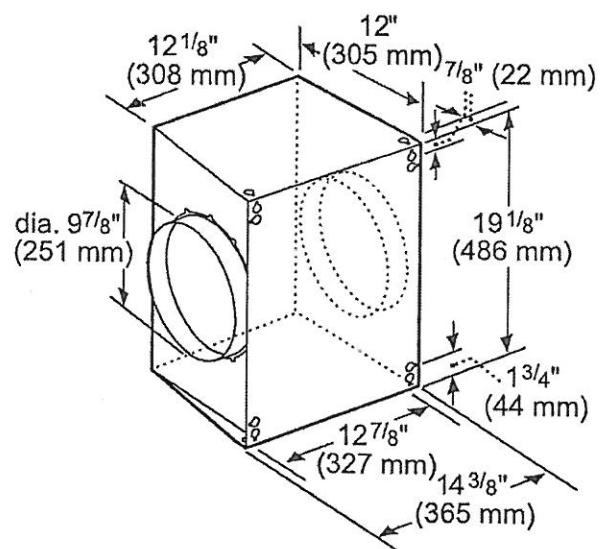
**INLINE BLOWERS (MOUNTED BETWEEN KITCHEN AND EXTERNAL WALL)**

VTI610W-600 CFM



measurements in inches and mm

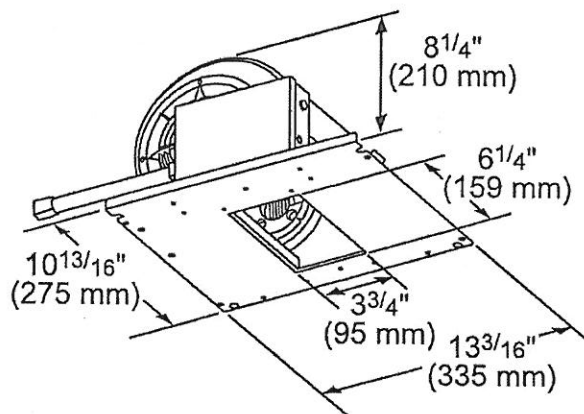
VTI1010W-1000 CFM



measurements in inches and mm

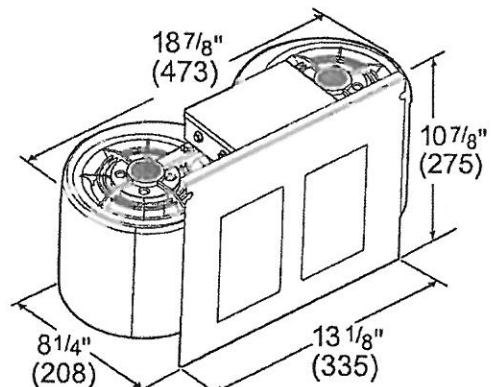
**INTEGRATED BLOWERS (MOUNTED IN HOOD)**

VTN630W-600 CFM





measurements in inches (mm)

VTN1090R-1000 CFM



measurements in inches and mm

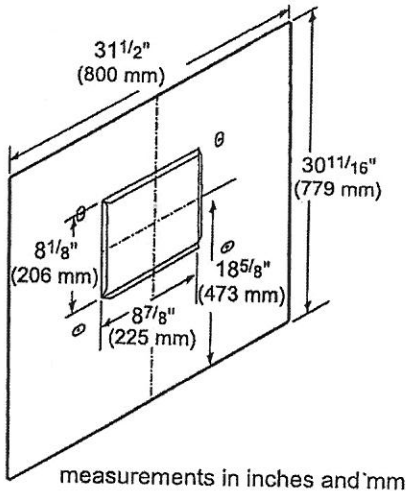
PV-85    
March 22, 2021

**VCIN36GWS**  
**36-INCH CUSTOM INSERT**  
PROFESSIONAL® SERIES

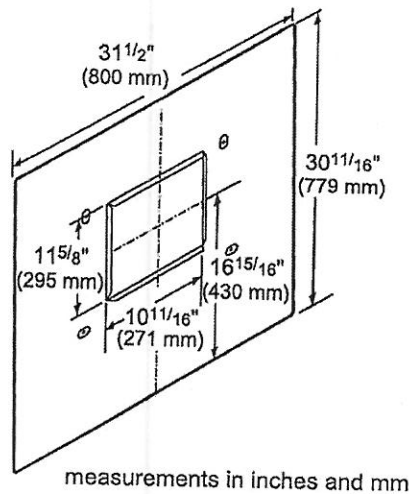


**REMOTE BLOWER ACCESSORIES**

**ROOFPLATE-RFPLT600P**



**ROOFPLATE-RFPLT1000P**



**EXTNCB25W**

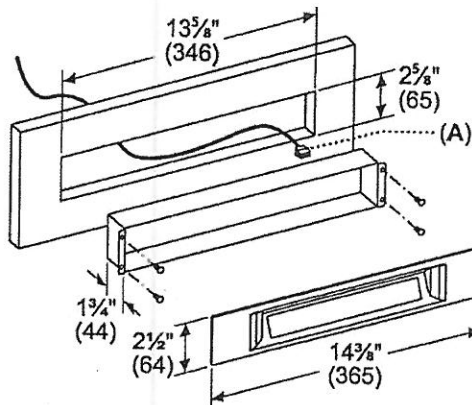
For use with the following Inline and Remote Blowers: VTR630W, VTR1030W, VTR1330W, VT1610W, VT11010W

**OPTIONAL ACCESSORIES**

**REMOTE CONTROL PANEL**  
**REMC PW**



Convenience at your fingertips: The remote control accessory offers the freedom to extend your hood controls to a more reachable spot



A: DBus Cable length: 30 feet (9180 mm)  
measurements in inches (mm)

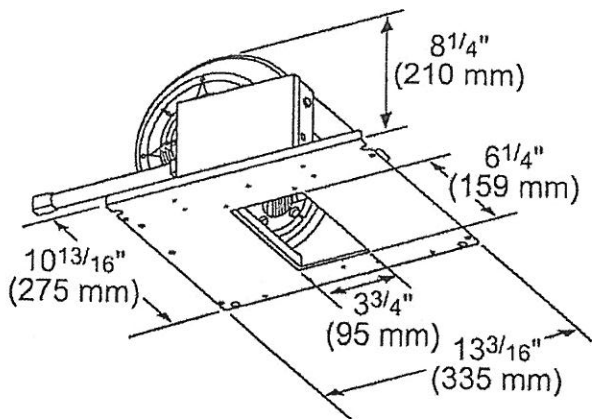
These warranties give you specific legal rights and you may have other rights that vary from state to state. Full warranty and limited warranty from date of installation. For complete warranty details, refer to your Use & Care manual, or ask your dealer.

Specifications are for planning purposes only. Refer to installation instructions and consult your countertop supplier prior to making counter opening. Consult with a heating and ventilation engineer for your specific ventilation requirements. For the most detailed information, refer to installation instructions accompanying product or write to Thermador indicating the model number. Specifications are correct at time of printing. Thermador reserves the right to change product specifications or design without notice. Some models are certified for use in Canada. Thermador is not responsible for products that are transported from the U.S. for use in Canada.

1 800 735 4328 | USA THERMADOR.COM | CANADA THERMADOR.CA | ©2020 BSH HOME APPLIANCES CORPORATION. ALL RIGHTS RESERVED.

PV-85  
March 22, 2021

600 CFM Integral Blower



measurements in inches (mm)

#### Product Features

	Accessory
Brand	Thermador
SKU	VTN630W
Internal article number	VTN630W
EAN code	825225934738
Product packaging dimensions (HxWxD) (in)	12 1/8" x 13 3/8" x 19 7/8"
	11
	13
UPC code	825225934738
	MCSA02216228_I7490_1621980_VTN630W_PA

#### Technical Specification

Notes: Please refer to installation instructions. Installation instructions are available at [www.thermador.com](http://www.thermador.com). Specifications are correct at the time of printing. Thermador reserves the right to change product specifications and design at any time, without notice.

1 800 735 4328 | [WWW.THERMADOR.COM](http://WWW.THERMADOR.COM) | 1901 Main Street, Suite 600 Irvine, CA 92614

©2020 BSH HOME APPLIANCES CORPORATION, ALL RIGHTS RESERVED LITHO DATE: 09/2020