

APPLIANCES

Invoice	Qty.	Description
2600 23Feb21 NoCat	1	ATTACHED SIGNED APPLIANCE SPECIFICATIONS

CERAMIC

Invoice	Qty.	Description
2600 23Feb21 NoCat	1	MASTER ENSUITE: SHOWER NICHE [SHAMPOO SHELF] - COMPLETE WITH MATCHING MARBLE JAMBS ON 4 SIDES, STANDARD TILE, APPROX. 12 X 18 INSTALLED VERTICALLY - SEE PLAN FOR LOCATION

CROWN MOULDING

Invoice	Qty.	Description
2600 23Feb21 NoCat	1	GREAT ROOM: MODEL OPTIONS 40.02 - GREAT ROOM - OPT. WAFFLE CEILING, BEAM DETAIL AS PER PLAN (6 BOXES) OPTION # 1 - CTR-B07

DRYWALL

Invoice	Qty.	Description
2600 72,373 23Feb21	1	MASTER BEDROOM: MODEL OPTIONS 40.02 - MASTER BEDROOM - OPT. 10 FOOT TRAY CEILING
2600 72,384 23Feb21	1	BREAKFAST: MODEL OPTIONS 40.02 - BREAKFAST ROOM OPT. COFFERED CEILING - AS PER PLAN
2600 72,385 23Feb21	1	GREAT ROOM: MODEL OPTIONS 40.02 - GREAT ROOM - OPT. COFFERED CEILING - AS PER PLAN
2600 72,387 23Feb21	1	GREAT ROOM: MODEL OPTIONS 40.02 - GREAT ROOM - OPT. WAFFLE CEILING, BEAM DETAIL AS PER PLAN (6 BOXES) OPTION # 1 - CTR-B07
2600 23Feb21 NoCat	1	MASTER ENSUITE: SHOWER NICHE [SHAMPOO SHELF] - COMPLETE WITH MATCHING MARBLE JAMBS ON 4 SIDES, STANDARD TILE, APPROX. 12 X 18 INSTALLED VERTICALLY - SEE PLAN FOR LOCATION



CONSTRUCTION SUMMARY

Lot: 40
Model: 40.02 B VALLEYVIEW
Project/Phase: Pine Valley Forevergreen / 1

ELECTRICAL

Invoice	Qty.	Description
2600 72,281 23Feb21	1	GREAT ROOM: INTERIOR WALL OUTLET: ADDITIONAL 110V WALL INTERIOR RECEPTACLE ON EXISTING CIRCUIT FOR WALL MOUNTED TV - LOCATE APPROX 66" A.F.F. ABOVE FIREPLACE
2600 72,273 23Feb21	1	KITCHEN: 110V WALL RECEPTACLE ON SEPARATE CIRCUIT - GAS FIRED RANGE - FOR AUX. EQUIPMENT - NOT A STOVE PLUG
2600 72,272 23Feb21	1	KITCHEN: 110V WALL RECEPTACLE ON SEPARATE CIRCUIT - FOR MICROWAVE - MICROWAVE NOT INCLUDED SEE PLAN FOR LOCATION
2600 72,303 23Feb21	1	KITCHEN: FIXTURE: UNDER CABINET FLUORESCENT LIGHT FIXTURES **INCLUDES RECESSED CABINETRY VALANCE**
2600 72,289 23Feb21	6	GREAT ROOM / BREAKFAST: 4" E/S LED INTERIOR POT LIGHT - GROUND FLOOR - EACH INCLUDED IN APS
2600 72,278 23Feb21	2	GREAT ROOM + BREAKFAST ROOM: ADDITIONAL INTERIOR SWITCH FOR POTLIGHTS
2600 72,288 23Feb21	2	MASTER ENSUITE: ROUGH-IN FOR ADDITIONAL WALL SCONCE (1) CAPPED OUTLET ON EXISTING SWITCH - FIXTURE NOT INCLUDED LOCATE OPPOSITE ENDS OF VANITY - SAME HEIGHT AND SWITCH AS STANDARD VANITY LIGHT
2600 72,310 23Feb21	1	MASTER ENSUTIE: UPGRADE STANDARD CEILING MOUNT FIXTURE TO (1) LED POT LIGHT - SECOND FLOOR - SEE PLAN FOR LOCATION
2600 72,290 23Feb21	2	MASTER ENSUITE: 4" E/S LED INTERIOR POT LIGHT (INSULATED CEILING) - SECOND FLOOR - EACH USE SAME SWITCH AS STANDARD
2600 72,307 23Feb21	1	KITCHEN: FIXTURE: RELOCATE STANDARD CEILING MOUNT FIXTURE - LOCATE APPROX CENTERED ABOVE ISLAND - SEE PLAN FOR LOCATION
2600 72,280 23Feb21	1	KITCHEN: CEILING OUTLET: ADDITIONAL REINFORCED CEILING OUTLET - LOCATE APPROX CENTERED ABOVE ISLAND - SEE PLAN FOR LOCATION USE SAME SWITCH AS STANDARD



CONSTRUCTION SUMMARY

Lot: 40
Model: 40.02 B VALLEYVIEW
Project/Phase: Pine Valley Forevergreen / 1

FRAMING

Invoice	Qty.	Description
2600 72,631 23Feb21	1	MASTER ENSUITE: SHOWER NICHE [SHAMPOO SHELF] - COMPLETE WITH MATCHING MARBLE JAMBS ON 4 SIDES, STANDARD TILE, APPROX. 12 X 18 INSTALLED VERTICALLY - SEE PLAN FOR LOCATION
2600 23Feb21 NoCat	1	MASTER BEDROOM: MODEL OPTIONS 40.02 - MASTER BEDROOM - OPT. 10 FOOT TRAY CEILING
2600 23Feb21 NoCat	1	REAR DOOR: UPGRADE TO 96" GARDEN DOOR ASSEMBLY
2600 23Feb21 NoCat	1	BREAKFAST: MODEL OPTIONS 40.02 - BREAKFAST ROOM OPT. COFFERED CEILING - AS PER PLAN
2600 23Feb21 NoCat	1	GREAT ROOM: MODEL OPTIONS 40.02 - GREAT ROOM - OPT. COFFERED CEILING - AS PER PLAN

HVAC

Invoice	Qty.	Description
2600 72,224 23Feb21	1	KITCHEN: GAS LINE ROUGH-IN - MAIN FLOOR FOR GAS RANGE

KITCHEN AND BATH CABINETRY

Invoice	Qty.	Description
2600 23Feb21 NoCat	1	THRU OUT: SEE ATTACHED CABINETRY SCHEDULE

MASONRY

Invoice	Qty.	Description
2600 23Feb21 NoCat	1	REAR DOOR: UPGRADE TO 96" GARDEN DOOR ASSEMBLY



CONSTRUCTION SUMMARY

Lot: 40
Model: 40.02 B VALLEYVIEW
Project/Phase: Pine Valley Forevergreen / 1

NETWORK AND WIRING

Invoice	Qty.	Description
2600 72,259 23Feb21	1	GREAT ROOM: CONDUIT PIPE - FOR WALL MOUNT TV - LOCATE APPROX 66" A.F.F. ABOVE FIREPLACE, THRU BASEMENT, TERMINATE AT CABLE - SEE PLAN FOR LOCATION
2600 72,258 23Feb21	1	GREAT ROOM: ADDITIONAL CAT6 ETHERNET OUTLET - EACH SEE PLAN FOR LOCATION
2600 72,258 23Feb21	1	BEDROOM 4: ADDITIONAL CAT6 ETHERNET OUTLET - EACH SEE PLAN FOR LOCATION
2600 72,260 23Feb21	1	CONDUIT PIPE - FROM ATTIC TO BASEMENT - FROM AT ELECTRICAL PANEL IN BASEMENT TO APPROX CENTER OF ATTIC

PAINT

Invoice	Qty.	Description
2600 23Feb21 NoCat	1	MASTER BEDROOM: MODEL OPTIONS 40.02 - MASTER BEDROOM - OPT. 10 FOOT TRAY CEILING
2600 23Feb21 NoCat	1	BREAKFAST: MODEL OPTIONS 40.02 - BREAKFAST ROOM OPT. COFFERED CEILING - AS PER PLAN
2600 23Feb21 NoCat	1	GREAT ROOM: MODEL OPTIONS 40.02 - GREAT ROOM - OPT. COFFERED CEILING - AS PER PLAN

PLUMBING

Invoice	Qty.	Description
2600 72,332 23Feb21	1	KITCHEN: ROUGH-IN 1/4" COLD WATER LINE TO FRIDGE
2600 23Feb21 NoCat	1	MASTER ENSUITE: MOEN '90*' RAIN SHOWER (from ceiling) + HAND SHOWER/SLIDE BAR - CHROME
2600 23Feb21 NoCat	1	KITCHEN: MOEN 'MODERN' POTFILLER INCLUDES ROUGH IN

WINDOWS AND DOORS

Invoice	Qty.	Description
2600 23Feb21 NoCat	1	REAR DOOR: UPGRADE TO 96" GARDEN DOOR ASSEMBLY



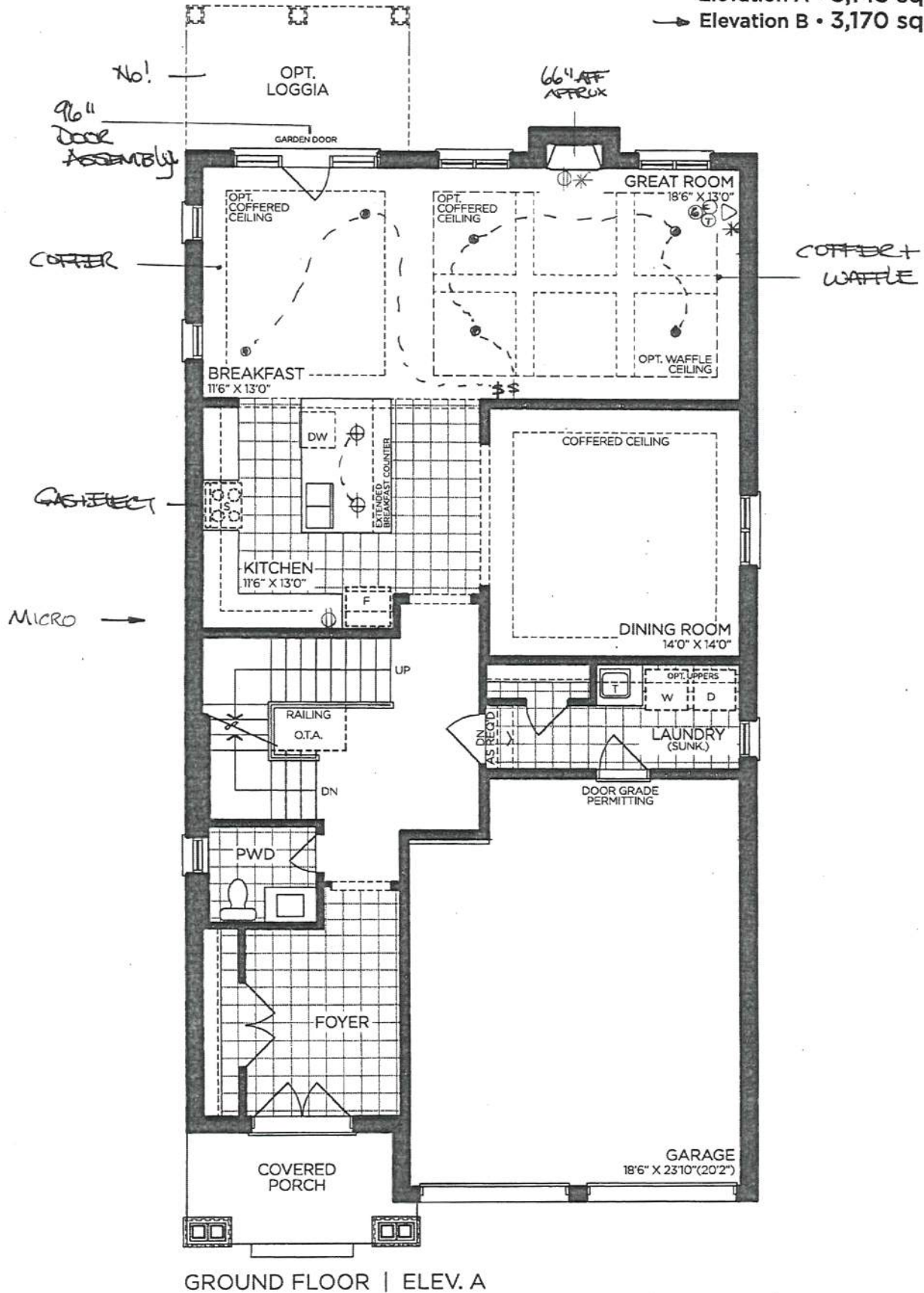
SCHEDULE 'F'

PV-40 AP
FEB 22 2021

The Valleyview

40' SERIES

Elevation A • 3,145 sq.ft.
→ Elevation B • 3,170 sq.ft.



VENDOR

PURCHASER

PURCHASER

GOLDPARK
WORTH MORE™

Prices, figures, illustrations, sizes, features and finishes are subject to change without notice. Areas and dimensions are approximate and actual usable floor space may vary from the stated area. Layout may be reverse of the unit purchased. E. & O.E. 4002

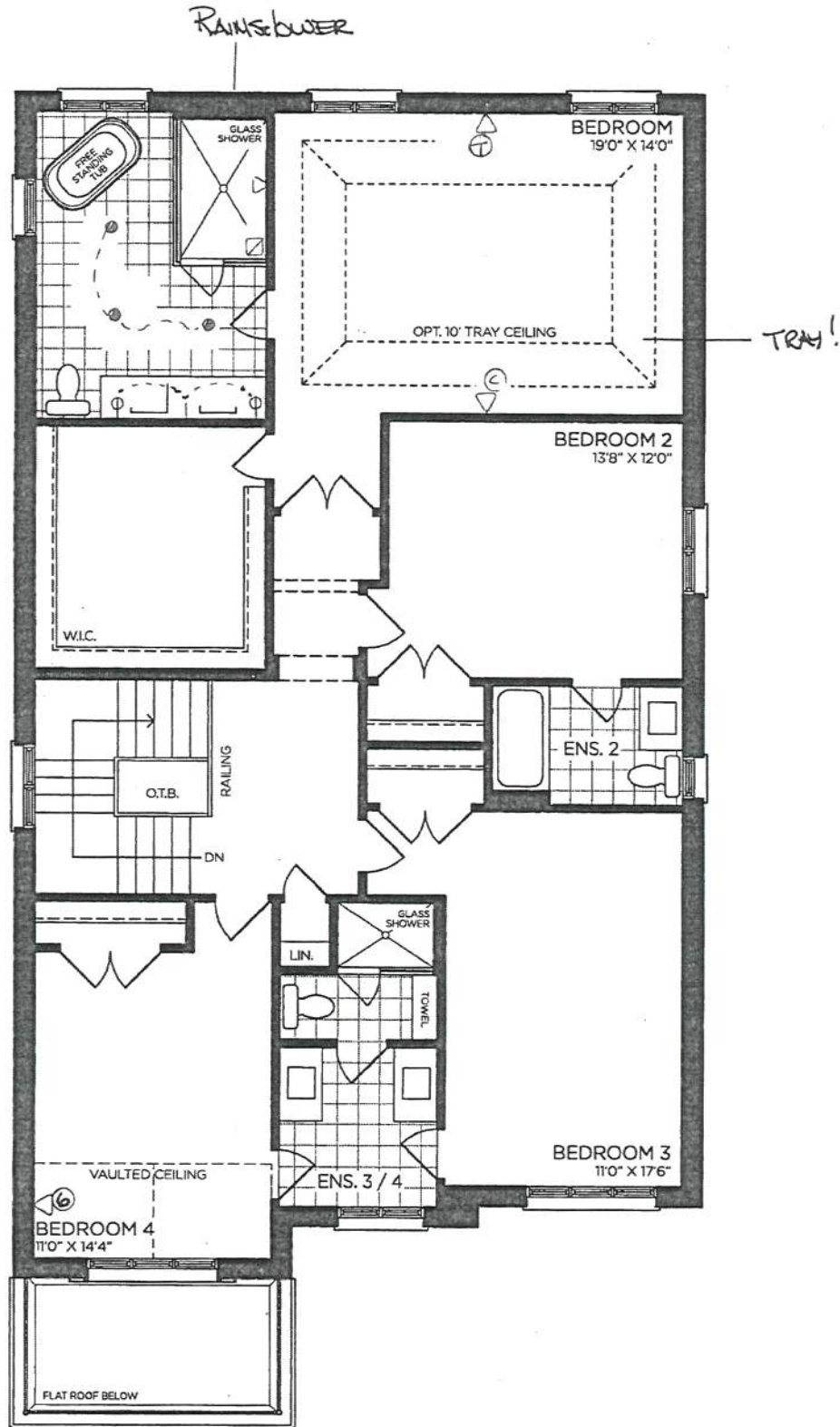
SCHEDULE 'F'



PV-40 AP
FEB 22 2021

The Valleyview 40' SERIES

Elevation A • 3,145 sq.ft.
→ Elevation B • 3,170 sq.ft.



SECOND FLOOR | ELEV. A

VENDOR
PURCHASER
PURCHASER

GOLDPARK
WORTH MORE™

Prices, figures, illustrations, sizes, features and finishes are subject to change without notice. Areas and dimensions are approximate and actual usable floor space may vary from the stated area. Layout may be reverse of the unit purchased. E. & O.E. 4002

SCHEDULE 'F'

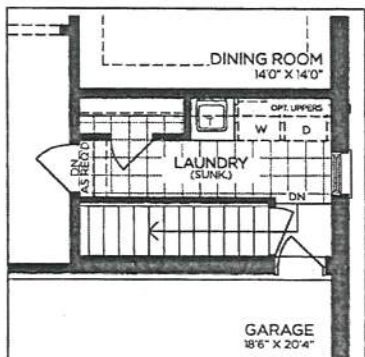


PV-40 AP
FEB 22 2022

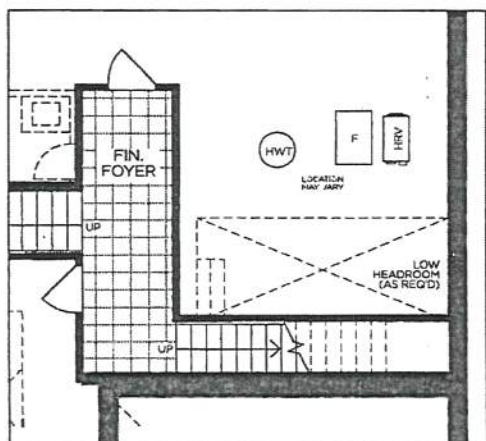
The
Valleyview
40' SERIES

Elevation A • 3,145 sq.ft.

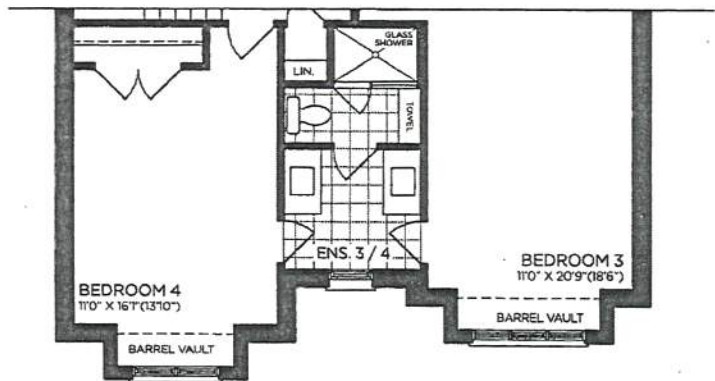
→ Elevation B • 3,170 sq.ft.



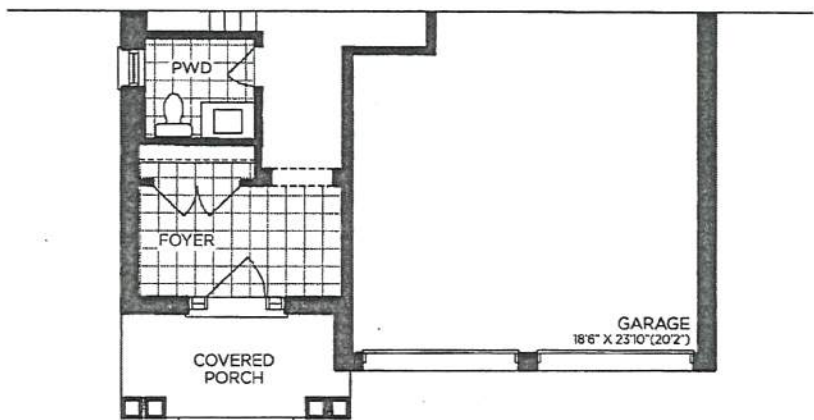
PART. GROUND FLOOR
OPT. SERVICE STAIR



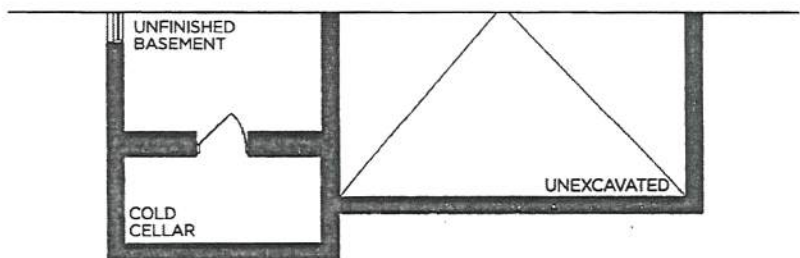
PART. BASEMENT
OPT. SERVICE STAIR



→ PART. SECOND FLOOR | ELEV. B



→ PART. GROUND FLOOR | ELEV. B



→ PART. BASEMENT | ELEV. B

VENDOR	<input type="text"/>
PURCHASER	<input type="text"/>
PURCHASER	<input type="text"/>

GOLDPARK
WORTH MORE™

Prices, figures, illustrations, sizes, features and finishes are subject to change without notice. Areas and dimensions are approximate and actual usable floor space may vary from the stated area. Layout may be reverse of the unit purchased. E. & O.E. 4002

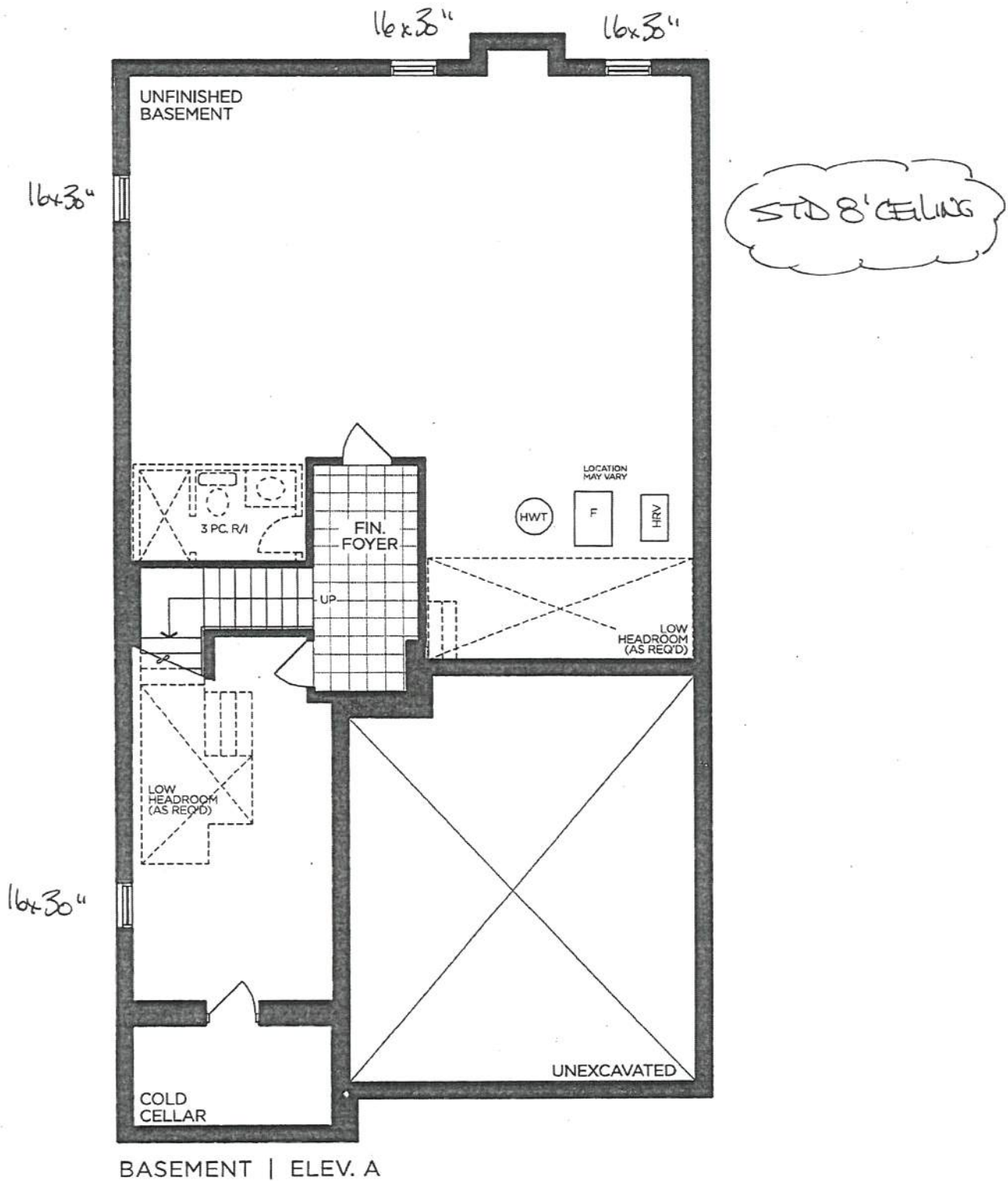
SCHEDULE 'F'



PV-40 AP
FEB 22 2021

The Valleyview
40' SERIES

Elevation A • 3,145 sq.ft.
→ Elevation B • 3,170 sq.ft.



BASEMENT | ELEV. A

VENDOR

PURCHASER

PURCHASER

GOLDPARK
WORTH MORE™

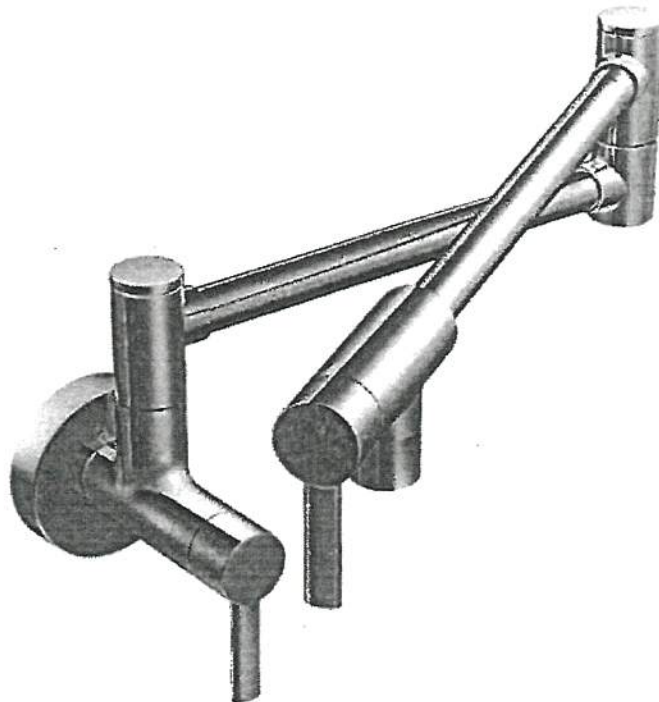
Prices, figures, illustrations, sizes, features and finishes are subject to change without notice. Areas and dimensions are approximate and actual usable floor space may vary from the stated area. Layout may be reverse of the unit purchased. E. & O.E. 4002

UPGRADE KITCHEN EXTRA



MOEN - MODERN

Pot Filler



- ☐ CHROME
- ☐ STAINLESS (SRS)
- ☐ POLISHED NICKEL (NL)
- ☒ MATTE BLACK (BL)
- ☐ BRUSHED GOLD (BG)

MODEL: S665 Pot Filler

Lot# 40	Date: FEB 22 2021	Room: Kitchen
Signature: 		
Signature: 		

FRIGIDAIRE GALLERY

FG4H2272UF

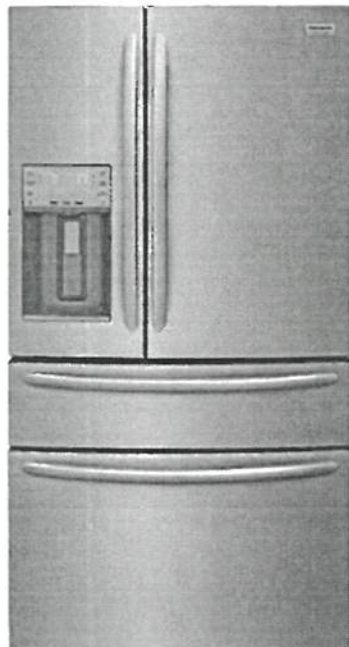
pv-40
Feb. 23, 2021



FRENCH DOOR REFRIGERATOR

21.8 CU. FT. COUNTER-DEPTH

Smudge-Proof™
Stainless Steel



AVAILABLE
COLORS



PRODUCT DIMENSIONS

Height (Including Hinges & Rollers)	70"
Width (Doors)	36"
Depth (Including Door)	29-5/8"

MORE EASY-TO-USE FEATURES

TwinTech™ Cooling System

Keeps food fresh by maintaining consistent temperatures in both the refrigerator and freezer.

Energy Star® Certified

Maximize your energy and dollar savings with ENERGY STAR®-Certified appliances.

PureSource Ultra® II Ice & Water Filtration

Remove 99.3% of lead and 99.9% of cysts from your household water with a genuine water filter.

PureAir Ultra® II Air Filter

Our PureAir Ultra® II air filter effortlessly keeps the food in your refrigerator fresh by removing odor particles with fast-acting, highly absorbent carbon technology.

Extra-Tall Ice and Water Pocket

Easily fill tall pitchers and sports bottles with a 10-inch exterior ice and water pocket.

Bright LED Lighting

Find fresh foods quickly with bright LED Lighting.

Smudge-Proof™ Stainless Steel

Resists fingerprints and cleans easily.

Get a Built-In Look with Counter-Depth Design

Our Counter-Depth Refrigerator gives you the built-in look without the remodel, saving you 3 more inches of kitchen floor space as compared to our Standard-Depth French Door Refrigerator.

Quick Freeze

Quickly freeze foods so they stay at their freshest—set this option before a large grocery run so your food freezes faster once you get home.

SIGNATURE FEATURES



Custom-Flex® Temp Drawer

Can refrigerate or freeze your favorites. Customize your storage space to fit more of your family's favorites, from yogurt to beer to frozen pizza. This middle drawer can be set anywhere from -6° to 45°F, the widest range in temperature settings on the market.



SpaceWise® Organization System

Easily access your most-used items with adjustable storage, including a flip-up shelf to fit taller items and an expandable door bin.



Auto CrispSeal™ Crisper Drawers

Keep produce fresh, so you waste less food and save more money.



OpenAccess™ Door

Makes grabbing your fresh favorites easier. Reach up to 75% of your fresh food by opening just one door.

CERTIFICATIONS

ENERGY STAR®



Star-K® Certified (Sabbath Mode)

FG4H2272UF
FRENCH DOOR REFRIGERATOR
21.8 CU. FT. COUNTER-DEPTH

FRIGIDAIRE
GALLERY

FEATURES

Door Design	Tall
Door Finish	Smudge-Proof™ Stainless Steel
Door Handle Design	Stainless Steel
Cabinet Finish	Gray Textured
Door Closers	Yes
Door Hinge Covers	Hidden
Rollers - Front/Rear	Adjustable/Yes
Water Filter Location	Top-Right - Fresh Food Section
Sound Package	Quiet Pack

DISPENSER

Controls	LED Display
Dispenser Design	Flush, Single-Paddle
Number of Dispenser Buttons	15
Crushed Ice/Cube Ice/Water	Yes/Yes/Yes
Cool/Freeze Option	Quick Chill/Quick Freeze
Cold Drink Timer	Yes
Lock Button	Yes
Power Outage/Door Ajar/ High Temp Alarms	Yes/Yes/Yes
Light	Yes
Water Filter Change Indicator Light	Yes
Air Filter Change Indicator Light	Yes

REFRIGERATOR FEATURES

Lighting	Multi-Level LED
Water Filter Type	PureSource Ultra®II
Air Filter Type	PureAir Ultra®II
Quarter-Width Fixed Shelves	1 Flip-Up
Half-Width Fixed Shelves	1 Slide-Under
Half-Width Adjustable Shelves	2
Cantilever Shelves	Yes
Crisper Drawer/Humidity Controls	2 CrispSeal™ Clear/ Auto-Humidity Control
Dairy Compartment	1 Clear
Fixed Door Bins	1 Clear Gallon/ 3 Clear Dispenser Bins
Gallon Adjustable Door Bins	3 Clear (1 Expandable)
Automatic Ice Maker	Yes
Ice Maker On/Off	Yes

CUSTOM-FLEX® TEMP DRAWER FEATURES

Self-Closing Pull-Out Drawer	Yes
Adjustable Temperature Range	-6° to 45°F
Drawer Divider	1 Adjustable
Lighting	LED

FREEZER FEATURES

Self-Closing Pull-Out Drawer	Yes
Sliding Full-Width Freezer Baskets	2 Plastic Drawers
Basket Divider	1 Adjustable (Bottom Basket)
Lighting	LED

CERTIFICATIONS

ENERGY STAR®	Yes
Star-K® Certified (Sabbath Mode)	Yes

SPECIFICATIONS

Total Capacity (Cu. Ft.)	21.8
Refrigerator Capacity (Cu. Ft.)	13.4
Freezer Capacity (Cu. Ft.)	5.9
Convertible Capacity (Cu. Ft.)	2.6
Power Cord Connection Location	Right Bottom Rear
Water Inlet Connection Location	Left Bottom Rear
Voltage Rating	120V/60Hz
Connected Load (kW rating) @ 120 Volts¹	1.14
Amps @ 120 Volts	9.5
Minimum Circuit Required (Amps)	15
Shipping Weight (Approx.)	340 Lbs.

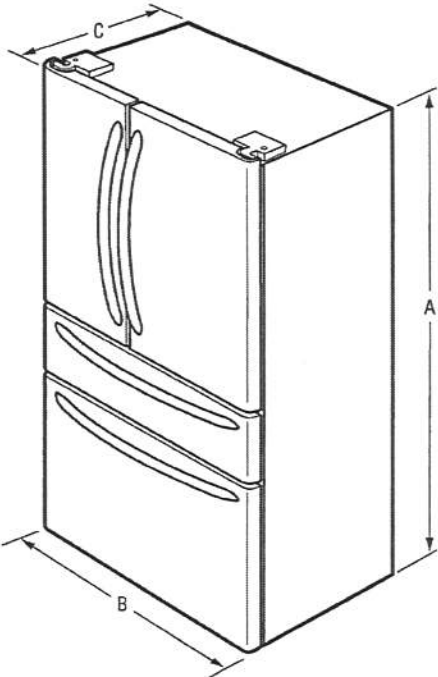
¹For use on adequately wired 120V, dedicated circuit having 2-wire service with a separate ground wire. Appliance must be grounded for safe operation.

PRODUCT DIMENSIONS

A - Height (Including Hinges & Rollers)	70"
B - Cabinet Width / Door Width	35-7/8" / 36"
C - Depth (Including Door)	29-5/8"
Depth with Door Open 90°	46-7/8"
Depth with Drawer Fully Extended (Including Handle)	45-1/4"

"BUILT-IN LOOK" CUTOUT DIMENSIONS

Height (Including Hinges & Rollers)	70-3/8"
Width	36"
Depth	25"



PV-40 AP
Feb. 23, 2021

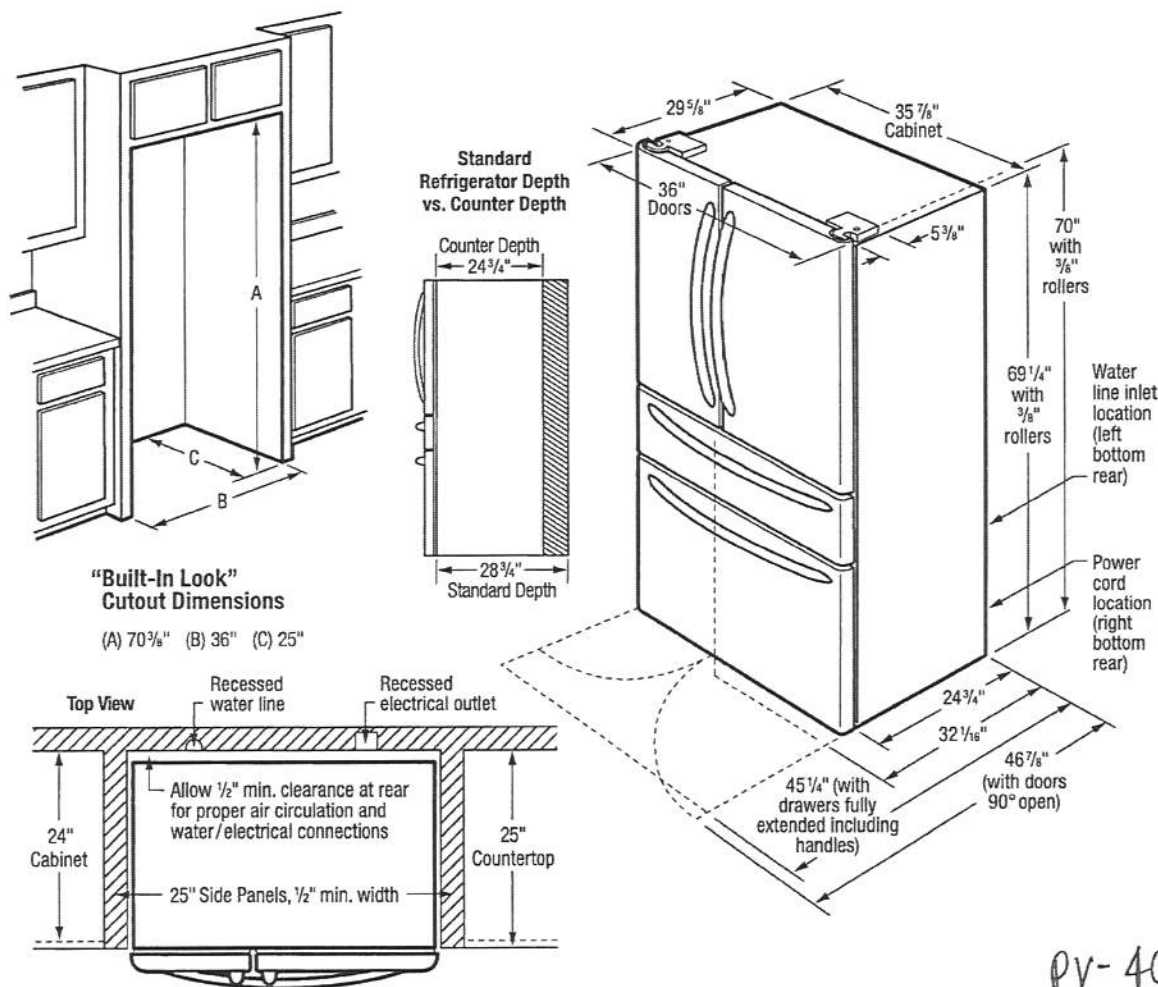


Note: For planning purposes only. Always consult local and national electric, gas and plumbing codes. Refer to Product Installation Guide for detailed installation instructions on the web at frigidaire.com / frigidaire.ca. Specifications subject to change. Accessories information available on the web at frigidaire.com / frigidaire.ca

FRIGIDAIRE

USA • 10200 David Taylor Drive • Charlotte, NC 28262 • 1-800-FRIGIDAIRE • frigidaire.com
CANADA • 5855 Terry Fox Way • Mississauga, ON L5V 3E4 • 1-800-265-8352 • frigidaire.ca

FG4H2272U 05/20
© 2018 Electrolux Home Products, Inc.



PV-40 ^{AW}
Feb. 23, 2021

INSTALLATION SPECIFICATIONS

- Product Shipping Weight (approx.) - 340 Lbs.
- Voltage Rating - 120V/60 Hz/15 Amps
- Connected Load (kW Rating) @ 120 Volts = 1.14 kW
(For use on adequately wired 120V, dedicated circuit having 2-wire service with a separate ground wire. Appliance must be grounded for safe operation.)
- Amps @ 120 Volts = 9.5 Amps
- Always consult local and national electric & plumbing codes.
- Floor should be level surface of hard material, capable of supporting fully loaded refrigerator.
- When installing refrigerator adjacent to wall, cabinet or other appliance that extends beyond front edge of unit, 20" minimum clearance recommended to allow for optimum 120° door swing, providing complete drawer/crisper access and removal. (Absolute 4-1/2" minimum clearance will ONLY allow for 90° door swing which will provide drawer/crisper access with restricted removal.)
- To ensure optimum performance, avoid installing in direct sunlight or close proximity to range, dishwasher or other heat source.

- Recess electrical outlet when possible.
- Water recess on rear wall recommended to prevent water line damage.
- Water Pressure - Cold water line must provide between 30 and 100 pounds per square inch (psi).
- Copper tubing with 1/4" O.D. recommended for water supply line with length equal to distance from rear of unit to household water supply line plus 7 additional feet. Optional Water Supply Installation Kits available.
- Adjustable front rollers to assist with door alignment.

"BUILT-IN LOOK" SPECIFICATIONS

- Minimum opening of 70-3/8"H x 36"W x 25"D required to allow for ease of installation, proper air circulation, and plumbing/electrical connections.
- Remove all wall/floor molding prior to installation.



FRIGIDAIRE
USA • 10200 David Taylor Drive • Charlotte, NC 28262 • 1-800-FRIGIDAIRE • frigidaire.com
CANADA • 5855 Terry Fox Way • Mississauga, ON L5V 3E4 • 1-800-265-8352 • frigidaire.ca

Note: For planning purposes only. Always consult local and national electric, gas and plumbing codes. Refer to Product Installation Guide for detailed installation instructions on the web at frigidaire.com / frigidaire.ca. Specifications subject to change. Accessories information available on the web at frigidaire.com / frigidaire.ca

FG4H2272U 05/20
©2018 Electrolux Home Products, Inc.

KitchenAid®

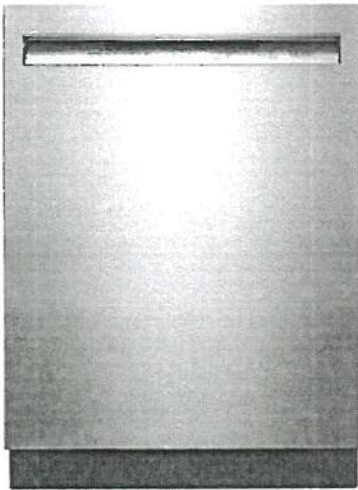
46 dBA* Front Control Dishwasher
KDFE104H

stainless



Feb 18 2021

[Signature]



Stainless Steel with PrintShield™ Finish
KDFE104HPS

Also available in:

- ☐ White KDFE104HWH
- ☐ Black KDFE104HBL
- ☒ Black Stainless Steel with PrintShield™ Finish KDFE104HBS

Key Features & Benefits

PrintShield™ Finish
Resists smudges and fingerprints. The specialized coating for stainless steel is easy to clean with just water and a soft cloth, so you can spend more time cooking and less time cleaning up the kitchen.

ProWash™ Cycle
Determines the ideal cycle for washing dishes based on soil level and then makes real-time adjustments to achieve the best cleaning performance.

Durable Stainless Steel Interior
Offers the beauty and benefits of stainless steel for the dishwasher interior. It resists streaks, stains and odors while retaining heat to help improve drying performance.

Capacity

Total Place Settings 14

General Features & Properties

- Heat Dry Option
- SatinGlide® Max Rails (Upper Rack)
- Fold-Down Shelf with Stemware Holders
- Filter-Based Wash System
- Sani-Rinse Option
- Express Wash Cycle
- Extended Heat Dry Option
- 2-4-8-Hour Delay Wash

Electrical Details

Amps 15 or 20
Volts 120
Hz 60

Certifications

ENERGY STAR® Certified Yes

Technical Details

Dishwasher Type Built-In
Control Location Front
Control Type Tap Touch
Number of Wash Cycles 5
Number of Options 6
dBA† 46
Number of Racks 2
Tub Material Stainless Steel
Wash System Filter
Wash System Type Removable Filter
Number of Wash Arms 3

Dimensions

Product Dimensions (H x W x D) 34-1/2" x 23-7/8" x 24-1/2"
Depth with Door Open 90° 49-1/2"

Reference Material

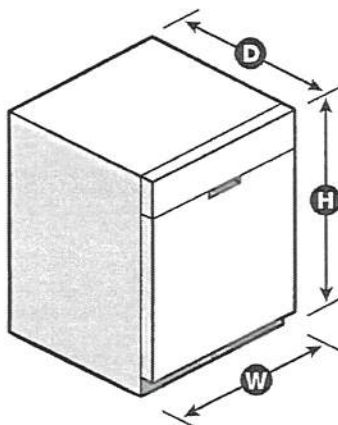
[Dimension Guide](#)

[Install Guide](#)

[Use & Care Guide](#)

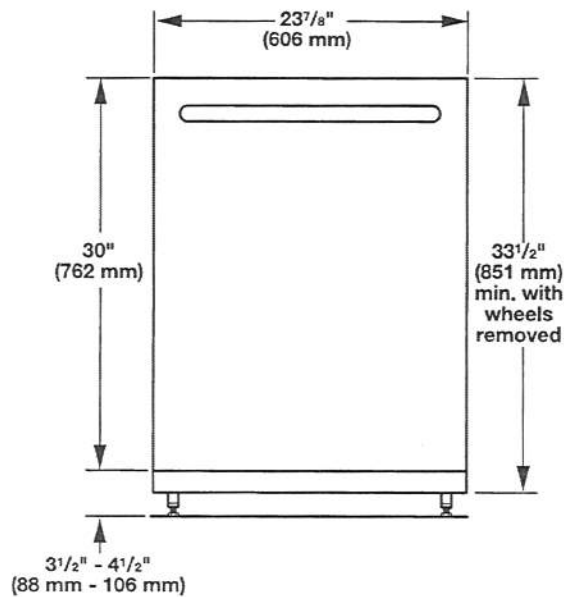
[Energy Guide](#)

[Warranty](#)

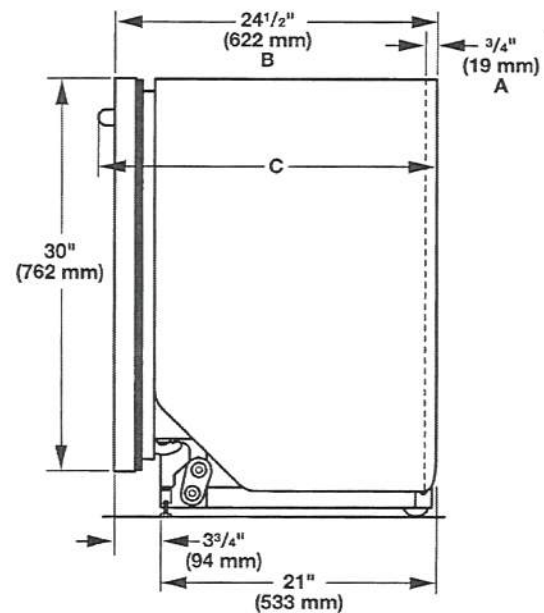


*Per IEC standards. **Compared to Whirlpool® dishwashers without TotalCoverage spray arm. †Compared to Normal cycle with lightly soiled loads. NOTE: Dimensions are for planning purposes only. For complete details, see Installation Instructions packed with product. Specifications subject to change without notice.
©/™ © 2020. All rights reserved. Printed in the U.S.A. D200052XXA. KDFE104HSPECSHEETV01.

Product and Cabinet Opening Dimensions

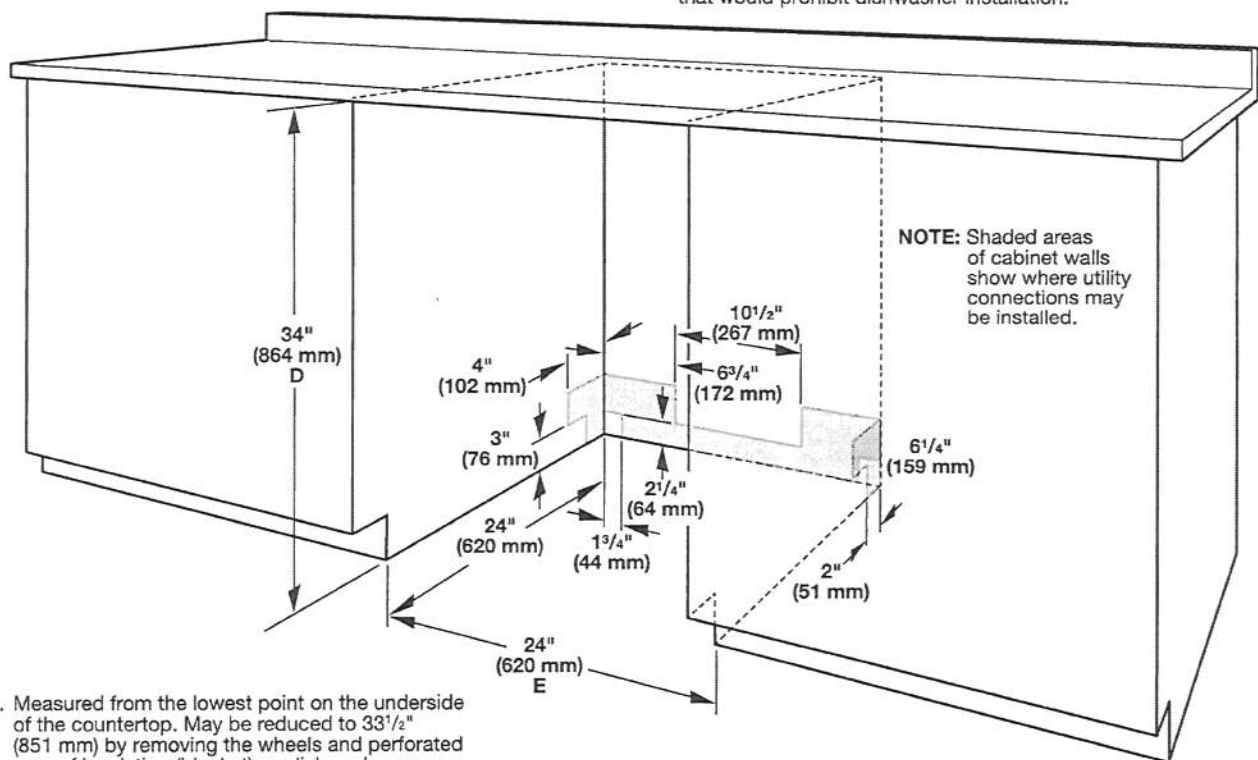


For 4" (100 mm) toe kick, height of cabinet opening is 34 ¹/₂" (863 mm).



- A. Insulation may be compressed (not used on all models).
- B. For panel-ready models, dishwasher depth is 24" (610 mm), not including the 3/4" (19 mm) custom door panel.
- C. Door handles may protrude forward of the face of the dishwasher, varies by model.

Check that all surfaces have no protrusions that would prohibit dishwasher installation.



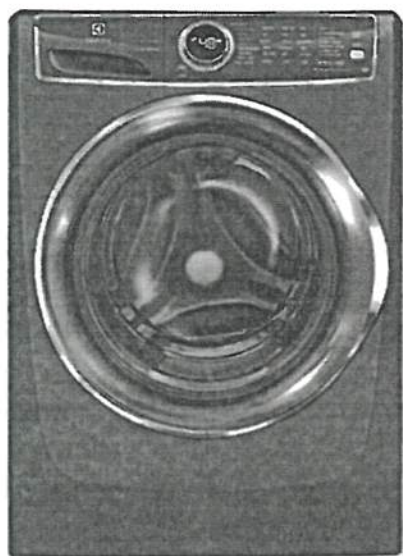
- D. Measured from the lowest point on the underside of the countertop. May be reduced to 33 ¹/₂" (851 mm) by removing the wheels and perforated area of insulation (blanket) on dishwasher.
- E. Minimum, measured from narrowest point of opening

FRONT LOAD WASHER

5.1 Cu. Ft. I.E.C.

EFLS627U TT / IW

Perfect Steam™ Washer with LuxCare® Wash, SmartBoost™ and IQ-Touch™ Controls



PRODUCT DIMENSIONS

Height	38"
Width	27"
Depth	32"

MORE EASY-TO-USE FEATURES

15-MINUTE FAST WASH¹

Quickly deep cleans the items you need most.

SOLID SOIL LEVEL CLEANS CAKED-ON STAINS

The solid soil level gives you a deeper clean to get rid of those tough stains that get caked on, like mud or dirt.

SANITIZE OPTION

Certified to kill and remove 99% of bacteria and 95% of allergens.²

STAINSOAK™ OPTION ELIMINATES PRE-TREAT

Unlike other washers, it starts by premixing water, detergent, and stain remover before the cycle begins to create a powerful, yet gentle cleaning solution. Then, the temperature, tumbling actions, and time are optimized based on the stain you select.

ENERGY STAR®-CERTIFIED

Electrolux washers meet strict criteria to guarantee high-quality energy efficient performance — without sacrificing clean.

ACTIVWEAR CYCLE

Takes care of delicate and expensive activewear garments.

10-YEAR MOTOR WARRANTY PLUS LIFETIME TUB WARRANTY

Rest easy knowing your washer is backed by a 10-year motor and lifetime tub warranty.

PERFECT BALANCE® SYSTEM & SECOND FLOOR GUARANTEE

Balances loads for smooth, quiet operation. So quiet you can even run your washer on the second floor or near bedrooms without noticing it.³

FITS MORE ROOMS WITH REVERSIBLE WASHER DOOR

With reversible washer door, four-way venting, and a standard 27" platform, our products are designed to fit just about anywhere you want to put them.

EXTRA LARGE CAPACITY

Easily cleans a king-sized comforter with extra large 5.1 cu. ft. drum.

Available in:



Titanium
(TT)



Island White
(IW)

¹Fast load based on 1 lb. DGE load

²Our products meet the NSF® testing standards.

³As tested on conventional wood floor construction with vinyl floor covering.

SIGNATURE FEATURES



THE MOST EFFECTIVE STAIN-REMOVING WASHER WITH SMARTBOOST™

Unlike other washers, our washer with SmartBoost™ premixes water and detergent before the cycle begins, maximizing the cleaning power of the detergent.



WORLD'S 1ST ADAPTIVE DISPENSER™ DESIGNED TO ACCEPT PODS®

Get the ultimate clean no matter what type of detergent you prefer with the Adaptive Dispenser™.



PERFECT STEAM™ REMOVES TOUGH STAINS

Unlike many washers, our Perfect Steam™ rises from the bottom, gently lifting dirt and stains from fibers.



THOROUGH CLEANING WITH THE LUXCARE® WASH SYSTEM

Our LuxCare® Wash System offers a thorough clean with improved wash actions, temperature control, and smart load sensing.

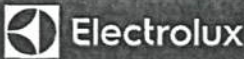
PR-40



Feb. 23, 2021

FRONT LOAD WASHER

EFLS627U TT/IW



27" FRONT LOAD WASHER

Capacity I.E.C. 5.1 Cu Ft.

FEATURES

Pull-to-Open Door	Yes
IQ-Touch™ Controls	Yes
Perfect Steam™ Wash System	Yes
Balance System	Perfect Balance®
Sound System	Luxury-Quiet™
Lighting	Luxury-Design®
Adaptive Dispenser™	Yes
Wash System	LuxCare®
Integral Water Heater	Yes
Wash Drum	Stainless Steel
Automatic Temperature Control	Yes
Automatic Water Level Adjustment	Yes
Auto Prewash Detergent Dispenser (Liquid/Powder)	Yes
Auto Bleach Dispenser (Liquid Only)	Yes
Auto Detergent Dispenser (Liquid/Powder/PDDS®)	Yes
Auto Fabric Softener Dispenser (Liquid Only)	Yes
Turntable Speed (RPM)	Variable
Spin Speed (RPM)	1,300
Reversible Door	Yes
Adjustable Leveling Legs	Yes
ENERGY STAR®	Yes
NSF® Certified/Sanitize	Yes

CYCLES

Heavy Duty, Whitest Whites, Normal, Activewear, Colours, 15-Min. Fast Wash, Delicates, Rinse & Spin, Clean Washer	9
---	---

OPTIONS

Wash/Rinse Temperature Combinations	7
Temperature Selections	5
Add Steam	Yes
Spin Speed Selections	5
Soil Level Selections	5
Delay Start	Yes
End-of-Cycle Chime	On/Off

INSTALLATION OPTIONS

Freestanding, Under Counter*, Stacked (Under Dryer), Pedestal, Hidden (In Closet), Second Floor	Yes
---	-----

ACCESSORIES

Luxury-Glide® Pedestal with Spacious Storage Drawer—Titanium — PN # EPWD257U1T	Optional
Island White — PN # EPWD257U1W	Optional
Dryer Stacking Kit — PN # STACKIT7X	Optional
Drain Hose Extension Kit — PN # 137098000	Optional

SPECIFICATIONS

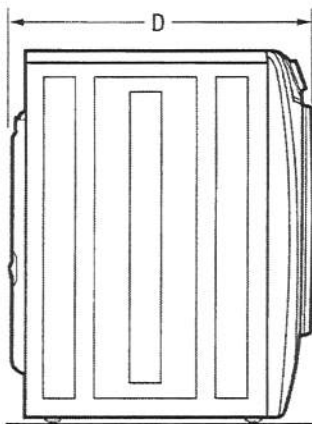
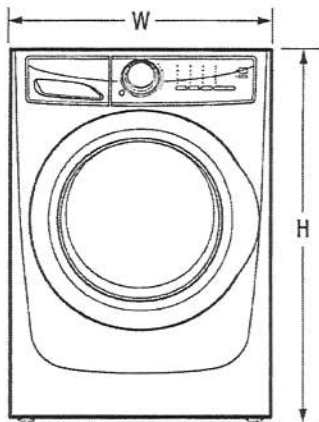
Colour —	
Titanium	TT
Island White	IW
Power Supply Location	Top Right Rear
Water Inlet Location	Top Left Rear
Voltage Rating	120V/60 Hz
Connected Load (kW Rating) @ 120 Volts†	1.2
Watts @ 120 Volts	1,200
Amps @ 120 Volts	12
Shipping Weight (Approx.)	247 Lbs.

*Side-by-side units in under-counter installations require custom-built countertop and/or cabinetry.

†An electrical supply with grounded three-prong receptacle is required. The power supply circuit must be installed in accordance with current editions of National Electrical Code (NEC) and local codes & ordinances.

NOTE: Always check local and national electrical and plumbing codes. Refer to Product Installation Guide for detailed installation instructions on the web at electroluxappliances.ca.

Specifications subject to change.



PRODUCT DIMENSIONS

Height (without 15" Pedestal)	38"
(with 15" Pedestal)	53-1/4"
Width	27"
Depth (to Centre of Arc Not Including Hose)	32"
(with Door 90° Open)	50-5/8"

PV-40 AP
Feb. 23, 2021

Electrolux Major Appliances, N.A.

CANADA • 5855 Terry Fox Way • Mississauga, ON L5V 3E4 • 1-800-265-8352 • electroluxappliances.ca

EFLS627U 05/18

© 2018 Electrolux Major Appliances, N.A.

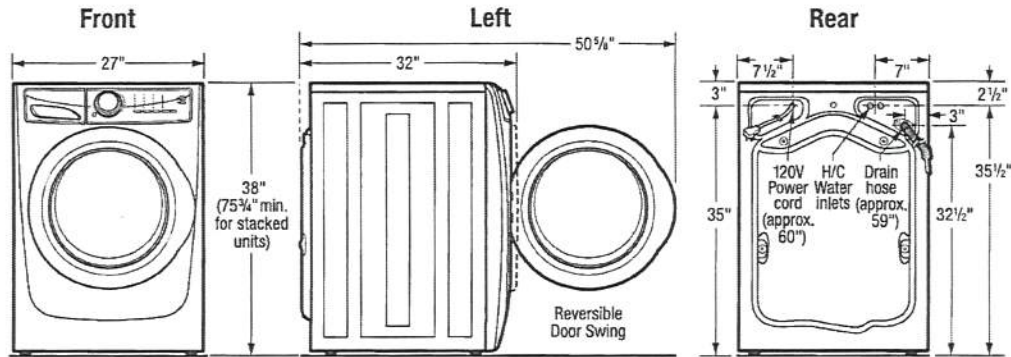


High standards of quality at Electrolux Home Products, Inc. mean we are constantly working to improve our products. We reserve the right to change specifications or discontinue models without notice.

Printed in Canada

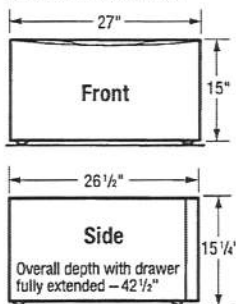
FRONT LOAD WASHER

EFLS627U TT / IW

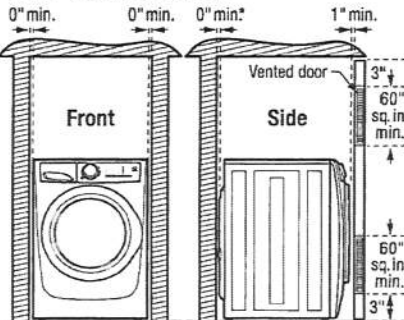


15" Pedestal Drawer Installation

Elevates washer height to 53 1/4". For detailed pedestal installation, refer to instructions included with pedestal or on web. Pedestal installation may require modified utility hookup locations. For details, refer to Product Installation Guide on web.



Built-In Installations



*Installation with steam dryer requires additional 3/4" hose clearance.

Closet Installation:

If washer and dryer are installed in same closet, door(s) MUST be vented with 120 sq. in. minimum louvered opening, equally divided, located 3" from top and bottom of door. Louvered door(s) with equivalent air openings for full-length of door is acceptable. Air openings MUST remain unobstructed with door(s) installed.

Installation Clearances:

Washer can be built in alone or with dryer (side by side or stacked) in closet, recess or under counter installation with 0" minimum clearance required around sides and back of unit(s). To achieve 0" minimum rear clearance when installed with dryer, dryer MUST be vented straight back or with quick-turn 90° elbow. Steam dryer requires additional 3/4" steam hose clearance at back of unit(s). Installation of closet door(s) requires additional 1" minimum clearance between front of unit(s) and door(s). Location of plumbing, exhaust and utility hookups MUST be considered when planning any built-in installation. For additional installation details, refer to Product Installation Guides on web.

Under Counter Installation:

Installation of washer alone or side by side with dryer under counter, requires custom-built countertop and/or cabinetry to accommodate unit(s) height.

Stacking Units:

Stacking dryer above washer requires use of optional Stacking Kit (PN# STACKIT7X) with modified utility hookup locations for dryer. For complete installation details, refer to instructions included with Stacking Kit or on web.

Front Load Washer Specifications

- Product Weight – 237 Lbs. / Shipping Weight – 247 Lbs.
- An electrical supply with grounded three-prong receptacle is required. The power supply circuit must be installed in accordance with current edition of National Electrical Code (ANSI/NFPA 70) and local codes & ordinances. (Do not use same circuit as dryer.)
- Voltage Rating – 120V/60Hz
- Connected Load (kW Rating) @ 120 Volts = 1.2 kW
- Amps @ 120V = 12A
- Equipped with 120V 3-wire power supply cord, approx. 60" long.
- Always consult local and national electric & plumbing codes.
- To maximize detergent effectiveness, ambient temperature should never be below 60°F.
- Can be installed alone, with or without optional 15" pedestal drawer, or stacked beneath matching Electrolux Dryer, which requires installation of optional dryer stacking kit. (For installation details, refer to instructions included with optional pedestal or stacking kit or on web.)
- Can be built in alone or with matching Electrolux Dryer (side by side or stacked) in closet, recess or under counter installation with 0" minimum clearance required around sides and back of unit(s). To achieve 0" minimum rear clearance when installed with dryer, dryer MUST be vented straight back or with quick-turn 90° elbow. Steam dryer requires additional 3/4" steam hose clearance at back of unit(s). Installation of closet door(s) requires additional 1" minimum clearance between front of unit(s) and door(s). Location of plumbing, exhaust and utility hookups MUST be considered when planning any built-in installation.
- Under-counter installation requires custom-built countertop and/or cabinetry to accommodate unit(s) height.

- Do NOT install in area exposed to dripping water or outdoor weather conditions, or where gasoline or other flammables, including automobiles, are kept or stored.
- For garage installation, washer MUST be located minimum 18" above floor.
- Floor MUST be solid with 1" maximum slope. To ensure vibration or movement does not occur, reinforcement of floor may be necessary. Do NOT install on carpeted surface.
- Leveling legs supplied to level washer properly and reduce excessive noise and vibration.
- H/C water faucets MUST be installed within 42" of washer's water inlet and MUST be 3/4" garden hose type, to connect to 48-1/2" inlet hoses.
- Water pressure MUST be between 20 and 120 psi with NOT more than 10 psi pressure difference between hot and cold.
- Drain required with standpipe diameter of 1-1/4" min. and height of 24" min./96" max. above floor, capable of eliminating 17 gallons per minute. Attached 59" drain hose can reach 79"-high standpipe.

Note: For planning purposes only. Refer to Product Installation Guide on the web at electroluxappliances.ca for detailed instructions.

Optional Accessories

- Pedestal Drawers – Titanium (PN# EPWD257UTT), Island White (PN# EPWD257UIW).
- Dryer Stacking Kit – (PN# STACKIT7X).
- Drain Hose Extension Kit – (PN# 137098000).

Electrolux Major Appliances, N.A.

CANADA • 5855 Terry Fox Way • Mississauga, ON L5V 3E4 • 1-800-265-8352 • electroluxappliances.ca


EFLS627U 05/18

© 2018 Electrolux Major Appliances, N.A.



High standards of quality at Electrolux Home Products, Inc. mean we are constantly working to improve our products. We reserve the right to change specifications or discontinue models without notice.

Printed in Canada

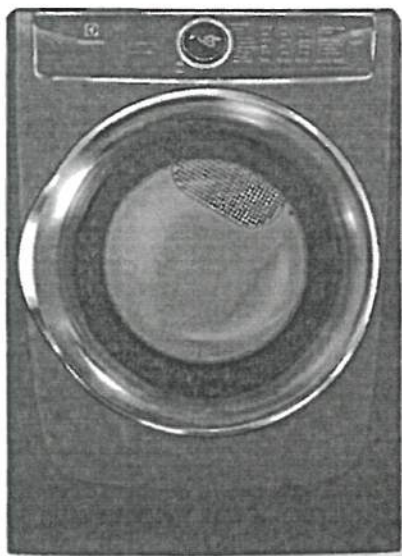
PV-40 AP 
Feb. 23, 2021

ELECTRIC FRONT LOAD DRYER

8.0 Cu. Ft.

EFMC627U TT / IW

Perfect Steam™ Dryer with Instant Refresh™ and IQ-Touch™ Controls

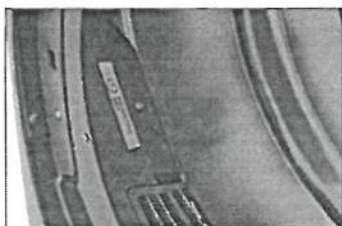


SIGNATURE FEATURES



PREDICTIVE DRY™ MORE ACCURATELY PREDICTS DRY TIMES

Knows after 90 seconds a more accurate time your clothes will be dried to perfection so you don't have to keep checking on your load.



HELP PREVENT OVER- OR UNDER- DRYING WITH LUXCARE® DRY SYSTEM

A more precise sensor for a better dry to protect your clothes from over-drying, but also to help make sure you don't have wet clothes left in the load.



INSTANT REFRESH™ CYCLE REVIVES FABRICS

Remove wrinkles and quickly refresh items with steam in 10 minutes.



15-MINUTE FAST DRY¹

Quickly dry the items you need most.

PRODUCT DIMENSIONS

Height	38"
Width	27"
Depth	31-1/2"

MORE EASY-TO-USE FEATURES

ENERGY STAR®-CERTIFIED

Rigorously tested to do more with less. Electrolux dryers meet strict criteria to guarantee high-quality energy efficient performance.

PERFECT STEAM™ WRINKLE RELEASE OPTION

Gently releases wrinkles and reduces static to keep clothes looking their best.

EXTENDED TUMBLE OPTION KEEPS CLOTHES TANGLE-FREE

Gently tumbles your clothes without heat to keep them tangle-free — perfect for when you cannot remove clothes right after the cycle ends.

LUXCARE® LINT SHIELD HELPS AVOID MESSSES

Traps lint so it doesn't make a mess, even if you empty it while there are clothes in the dryer.

ACTIVWEAR CYCLE

Takes care of delicate and expensive activewear garments.

EXTRA-LARGE CAPACITY DRYER

Dry more in each load with our 8.0 cu. ft. dryers.

9 CYCLES TO CARE FOR EVERY FABRIC

Perfectly dry every item with tailored cycles for towels, allergen, delicates, and more.

FITS MORE ROOMS WITH REVERSIBLE DOOR

Enjoy easy loading no matter how your washer and dryer are configured.

OPTIONAL PEDESTALS AND STACKING KIT FOR MORE INSTALLATION OPTIONS

Raise your units with optional pedestal drawers that provide extra storage. Or use the optional stacking kit for convenient placement in small spaces.

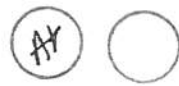
Available in:



¹Fastest time based on smallest load/Fast Dry cycle selected for various load compositions.

ELECTROLUXAPPLIANCES.CA

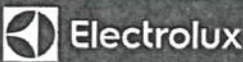
PV-40



Feb. 23, 2021

ELECTRIC FRONT LOAD DRYER

EFMC627U TT/IW



27" ELECTRIC FRONT LOAD DRYER

Capacity D.O.E.	8.0 Cu. Ft.
FEATURES	
Pull-to-Open Door	Yes
iQ-Touch™ Controls	Yes
Perfect Steam™ Dry System	Yes
Dry System	Predictive Dry™
Sound System	Luxury-Quiet™
Lighting	Luxury-Design® LED
Tumble System	Gentle Tumble™
Moisture Sensor	Yes
Dryer Drum	Stainless Steel
Tumble Speed (RPM)	50
Reversible Door	Yes
Adjustable Leveling Legs	Yes
ENERGY STAR®	Yes

CYCLES

Timed Dry (30, 45, 60, 75), Allergen, Heavy Duty/Towels, Normal, 15-Min. Fast Dry, Activewear, Mixed Load, Delicates, Instant Refresh™	9
--	---

OPTIONS

Temperature Selections	5
Add Steam	Yes
Electronic Auto Dry System	Yes
Manual Timed Dry Selections	4
Delay Start (Hours)	12
End-of-Cycle Chime	On/Off
Extended Tumble	Yes
Anti-Static	Yes
Line Dry	Yes
Dryness Levels	5

INSTALLATION OPTIONS

Freestanding, Under Counter*, Stacked (Above Washer), Pedestal, Hidden (in Closet), Second Floor	Yes
4-Way Dryer Venting	Yes

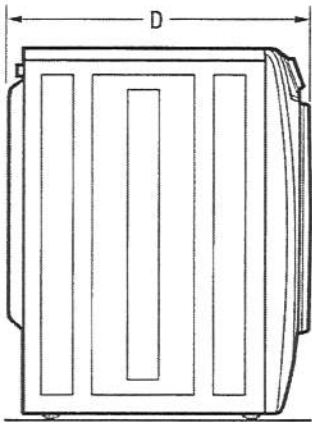
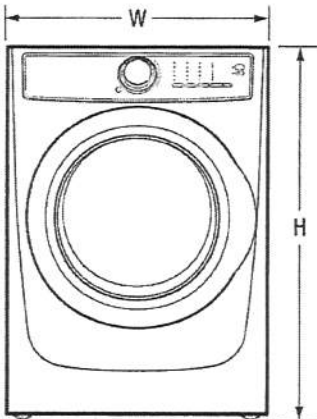
ACCESSORIES

Luxury-Glide® Pedestal with Spacious Storage Drawer—	
Titanium — PN# EPWD257UT1	Optional
Island White — PN# EPWD257UW	Optional
Dryer Stacking Kit — PN# STACKIT7X	Optional
Drying Rack — PN# A04840701	Optional
Assembly Hose Kit — PN# 5304495002	Optional

SPECIFICATIONS

Colour —	
Titanium	TT
Island White	IW
Maximum Exhaust Duct Length** (FL)	125
Power Supply Connection Location	Rear
Voltage Rating	240V/60Hz/30A
Connected Load (kW Rating) @ 240 Volts	6.0
Amps @ 240 Volts	25
Heating Element @ 240 Volts (Watts)	5,400
Shipping Weight (Approx.)	140 Lbs.

*Side-by-Side units in under-counter installation require custom built counter-top/breaker assembly.
**Rigid metal duct preferred; semi-rigid optional and allow deductious for elbows and vents. Refer to Installation Guide on web for additional information.
NOTE: Always consult local and national electric and plumbing codes. Refer to Product Installation Guide for detailed installation instructions on the web at electroluxappliances.ca.
Specifications subject to change.



PRODUCT DIMENSIONS

Height (without 15" Pedestal)	38"
Height (with 15" Pedestal)	53-1/4"
Width	27"
Depth (to Centre of Air Not Including Hose)	31-1/2"
Depth (with Door 90° Open)	50-5/8"

PV-40

AP



Feb. 23, 2021

Electrolux Major Appliances, N.A.

CANADA • 5855 Terry Fox Way • Mississauga, ON L5V 3E4 • 1-800-265-8352 • electroluxappliances.ca

EFMC627U 05/18

© 2018 Electrolux Major Appliances, N.A.

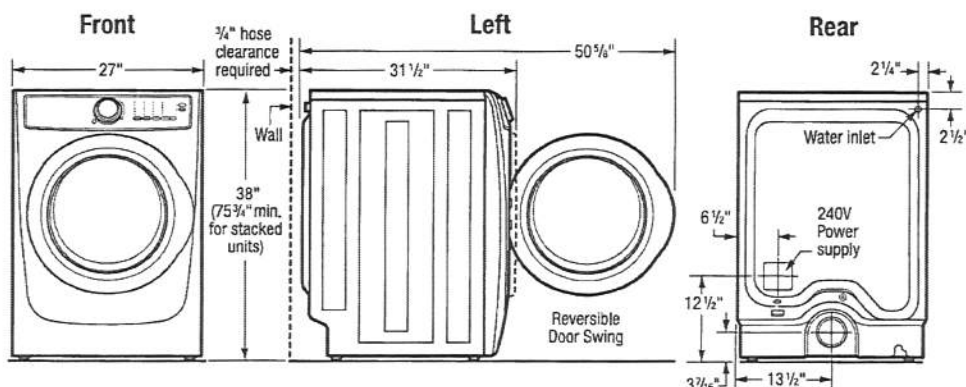


High standards of quality at Electrolux Home Products, Inc. mean we are constantly working to improve our products. We reserve the right to change specifications or discontinue models without notice.

Printed in Canada

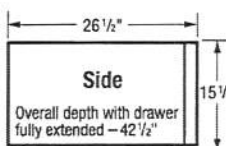
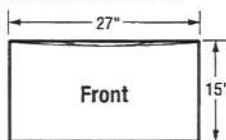
ELECTRIC FRONT LOAD DRYER

EFMC627U TT / IW

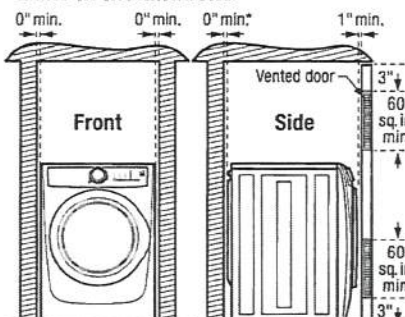


15" Pedestal Drawer Installation

Elevates dryer height to 53 1/4". For detailed pedestal installation, refer to instructions included with pedestal or on web. Pedestal installation may require modified utility hookup locations. For details, refer to Product Installation Guide on web.



Built-In Installations



*Steam dryer requires additional 3/4" hose clearance.

Closet Installation:

If washer and dryer are installed in same closet, door(s) MUST be vented with 120 sq. in. minimum louvered opening, equally divided, located 3" from top and bottom of door. Louvered door(s) with equivalent air openings for full-length of door is acceptable. Air openings MUST remain unobstructed with door(s) installed.

Installation Clearances:

Dryer can be built in alone or with washer (side by side or stacked) in closet, recess or under counter installation with 0" minimum clearance required around sides and back of unit(s). To achieve 0" minimum rear clearance, dryer MUST be vented straight back or with quick-turn 90° elbow. Steam dryer requires additional 3/4" steam hose clearance at back of unit(s). Installation of closet door(s) requires additional 1" minimum clearance between front of unit(s) and door(s). Location of plumbing, exhaust and utility hookups MUST be considered when planning any built-in installation. For additional installation details, refer to Product Installation Guides on web.

Under Counter Installation:

Installation of dryer alone or side by side with washer under counter, requires custom-built countertop and/or cabinetry to accommodate unit(s) height.

Stacking Units:

Stacking dryer above washer requires use of optional Stacking Kit (PN# STACKIT7X) with modified utility hookup locations for dryer. For complete installation details, refer to instructions included with Stacking Kit or on web.

Electric Dryer Specifications

- Product Weight – 130 Lbs. / Shipping Weight – 140 Lbs.
- Voltage Rating – 240/60 Hz/30A
- Single phase 3- or 4-wire cable, 240 Volt, 60 Hertz AC only electrical supply with ground required on separate circuit fused on both sides of line. (Do not use same circuit as washer.)
- Connected Load (kW Rating) @ 240 Volts = 6.0 kW
- Amps @ 240V = 25A
- Dryer MUST employ a 3-conductor NEMA 10-30 type SRDT or 4-conductor NEMA 14-30 type SRDT or ST (as required), rated at 240 volt AC minimum, 30 amp power supply cord marked for use with clothes dryers (not supplied).
- Grounding through neutral link prohibited in specific applications and certain locales, requiring use of 4-wire system. (For detailed electrical requirements, refer to Product Installation Guide on web.)
- Always consult local and national electric & plumbing codes.
- Can be installed alone, with or without optional 15" pedestal drawer, or stacked above matching Electrolux Washer, which requires installation of optional dryer stacking kit. (For installation details, refer to instructions included with optional pedestal or stacking kit or on web.)
- Can be built in alone or with matching Electrolux Washer (side by side or stacked) in closet, recess or under counter installation with 0" minimum clearance required around sides and back of unit(s). To achieve 0" minimum rear clearance, dryer MUST be vented straight back or with quick-turn 90° elbow. Steam dryer requires additional 3/4" steam hose clearance at back of unit(s). Installation of closet door(s) requires additional 1" minimum clearance between front of unit(s) and door(s). Location of plumbing, exhaust and utility hookups MUST be considered when planning any built-in installation.
- Under-counter installation requires custom-built countertop and/or cabinetry to accommodate unit(s) height.

- Do NOT install in area exposed to dripping water or outdoor weather conditions, or where gasoline or other flammables, including automobiles, are kept or stored.
- For garage installation, dryer MUST be located minimum 18" above floor.
- Floor MUST be solid with 1" maximum slope. To ensure vibration or movement does not occur, reinforcement of floor may be necessary. Do NOT install on carpeted surface.
- Dryer MUST exhaust to outside of building, NOT into any concealed space.
- Dryer equipped for 4-way venting and approved for up to 125-foot-equivalent of duct length, determined by length of run and number of elbows needed.
- Exhaust installation requires minimum 4"-diameter rigid or semi-rigid metal duct with approved, unobstructed vent hood having swing-out damper(s). If installing rigid metal duct (preferred), do not exceed MAXIMUM venting run length of 125 ft., allow deductions for elbows and vents. If installing semi-rigid metal duct, do not exceed MAXIMUM venting run length of 8 ft., always allow deductions for elbows and vents (Refer to Product Installation Guide on web for additional information). Do NOT use flexible plastic or metal foil duct and use shortest run possible.
- Leveling legs supplied to level dryer properly and reduce excessive noise and vibration.
- Water inlet hose for steam setting connects to cold water supply with "Y" connector and requires 3/4" clearance between back of unit and wall.

Note: For planning purposes only. Refer to Product Installation Guide on the web at electroluxappliances.ca for detailed instructions.

Optional Accessories

- Pedestal Drawers – Titanium (PN# EPWD257UTT), Island White (PN# EPWD257UIW).
- Dryer Stacking Kit – (PN# STACKIT7X).
- Drying Rack – (PN# A04840701).
- Assembly Hose Kit – (PN# 5304495002).



High standards of quality at Electrolux Home Products, Inc. mean we are constantly working to improve our products. We reserve the right to change specifications or discontinue models without notice.


Printed in Canada

Electrolux Major Appliances, N.A.

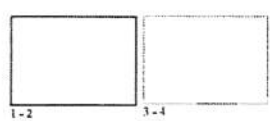
CANADA • 5855 Terry Fox Way • Mississauga, ON L5V 3E4 • 1-800-265-8352 • electroluxappliances.ca

EFMC627U 05/18

© 2018 Electrolux Major Appliances, N.A.

PV-40 
Feb. 23, 2021

PV-40
Feb. 23, 2021



12

6.5 Cu. Ft. 30" Electric Range



Signature Features

- Air Fry**
 - The ideal way to enjoy healthier fried food as it eliminates excess fat, but everything is still crispy and brown outside and juicy inside.
- Wi-Fi Connectivity**
 - Monitor and control the oven using the SmartThings App! And control the oven with your voice using a voice assistant* such as Samsung Bixby®, Amazon Alexa or Google Assistant.
- True Convection**
 - A heated fan circulates heat all around the oven and keeps the temperature constant so dishes are cooked quickly and thoroughly.
- Powerful, Flexible Cooktop**
 - Cook fast with 5 specialized burners, a 10K BTU Power Burner and one 1K Summer Burner.
- Fingerprint Resistant Finish**
 - Prevent surfaces from being covered in smudges, fingerprints or marks and smudges.

Available Colours

- Fingerprint Resistant Stainless Steel (shown)
- Fingerprint Resistant Black Stainless Steel



Air Fry



True Convection

Features

- Air Fry with included Air Fry Rack
- True Convection
- Wi-Fi Connectivity
- Built-In Proof 90°F (35°C)
- Voice Control
- Flexible Cooktop
- Fingerprint Resistant Finish

- Large Capacity - 6.5 Cu. Ft.
- 5 Gas Burners
- 1K Summer Burner
- Wide View Window
- Aluminum Griddle
- Storage Drawer

Convenience

- Self Clean
- 2 Chrome Racks
- Auto Oven Light
- Sabbath Mode
- Kitchen Timer
- Delay Start
- Auto Shut-Off Option
- Child Safety Lock

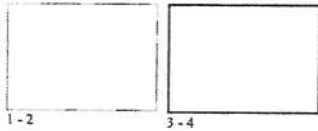
Available in select markets. Wi-Fi features require Wi-Fi connectivity and Samsung account for setup.
* Wi-Fi connectivity required.
* Samsung Bixby, Amazon Alexa or Google Assistant required. Wi-Fi connectivity and Samsung account for setup.

PR-40
Feb. 23, 2021

AP



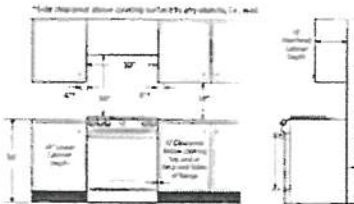
2/2



Slide-In Range

Installation Specifications

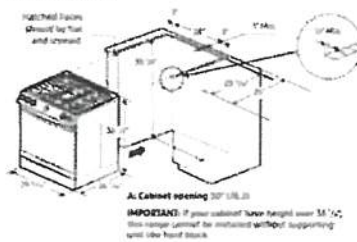
BEFORE YOU BEGIN to install this appliance, refer to the following information, dimensions, and clearances. Do not locate the range where it may be subject to strong drafts. Provide adequate clearances between the range and adjacent combustible surfaces. These dimensions must be strict for safe use of the range. The location of the electrical outlet and gas piping may be adjusted to meet the following dimensions and clearances. For installation in Canada, a free-standing range is not to be installed closer than 4.7 in (12 cm) from any adjacent surface.



Dimensions

CAUTION: This range has been designed to comply with the maximum allowable wood cabinet temperature of 194 °F (90 °C). Make sure the wall covering, countertops, and cabinets around the range can withstand the heat up to 194 °F (90 °C) generated by the range. If not, discoloration, delamination, or melting may occur.

SLIDE-IN CUTOUT



A. Cabinet opening 30" (762 mm)

IMPORTANT: If your cabinet face height over 31 1/2", this range cannot be installed without supporting wood face board.

Total Power

18.5K BTU

Power Source

120V/60Hz/40A

5-Burner Cooktop

- Right Front: 18K BTU
- Left Front: 18K BTU
- Right Rear: 9.5K BTU
- Left Rear: 9.5K BTU
- Centre (Oval): 10K BTU

Oven: 6.0 cu. ft. Capacity

- Bake: 175°F-550°F
- Bake Burner: 18K BTU
- Broil Burner: 16.5K BTU
- Variable Broil: Low/High (375°F-450°F)
- Sabbath Mode

Storage Drawer

- Capacity: 1.0 cu. ft.

Warranty

One (1) Year Parts and Labour

Product Dimensions & Weight (WxHxD)

Outside Net Dimensions: 29 1/2" x 36 1/2" x 28 1/2"

Weight: 208 lbs (94.4 kg)

Shipping Dimensions & Weight (WxHxD)

Dimensions: 33 1/2" x 41 1/2" x 50 1/2"

Weight: 233 lbs (106 kg)

Colour

Stainless Steel

Black Stainless Steel

Model

NK6078BTSS

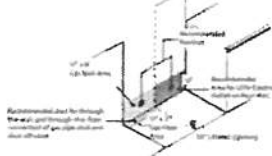
NK6078BTSSG

UPC Code

98727609245

98727609238

Recommended Locations for Gas Piping and Electrical Outlets



Actual colour may vary. Design, specifications and dimensions are subject to change without notice. Some models may vary. Weight and measurements are approximate. © 2019 Samsung Electronics Canada Inc. All rights reserved. Samsung is a registered trademark of Samsung Electronics Co., Ltd. and/or its affiliates.

PV-40 (AP)

Feb. 23, 2021



1.02



1-2

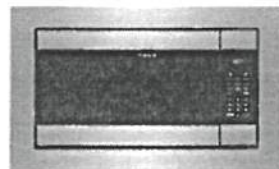
3-4

CGMO226NUF

MICROWAVE

24" BUILT-IN

Smudge-Proof™
Stainless Steel



AVAILABLE COLOURS



SIGNATURE FEATURES



Pizza Maker™ Preheats
Extra-long preheating period
3.5 to 5 min. of cooking time



Rotisserie Cooking Options
Automatic defrost, auto cook, auto
reheat and auto hold to keep a variety
of foods delicious



Over 30 Cooking Options
Offers multiple settings for heat, time
and power, including manual, defrost
and more



One-Touch Options
One-touch buttons for auto cook, auto
reheat, auto hold, auto defrost, auto
hold, auto cook, auto hold, auto cook
with the touch of a button

PRODUCT DIMENSIONS

Height	24 1/2"
Width	24 1/2"
Depth	19 1/2"

MORE EASY-TO-USE FEATURES

Smudge-Proof™ Stainless Steel
Resists fingerprints and stains easily

Effortless™ Defrost
Defrosts frozen food in minutes

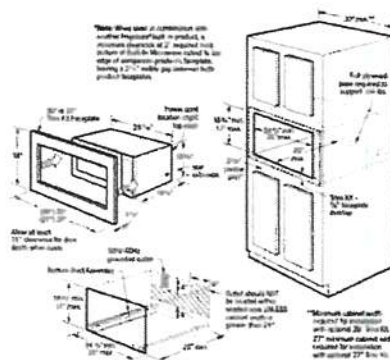
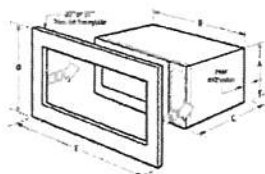
Built-In Timer
Cooking time is displayed on the digital display
and the timer is set to 0:00

10/10/2020



1-2

Gibbs et al.'s Z-score statistics	
1. <i>Height</i>	0.530
2. <i>Weight</i>	0.000
3. <i>Age</i>	0.000
4. <i>Sex</i>	0.000
5. <i>Log 10 (BMI)</i>	0.000
6. <i>Log 10 (BMI) squared</i>	0.000
Gibbs et al. Z-score statistics	
1. <i>Height</i>	0.530
2. <i>Weight</i>	0.000
3. <i>Age</i>	0.000
4. <i>Sex</i>	0.000
5. <i>Log 10 (BMI)</i>	0.000
6. <i>Log 10 (BMI) squared</i>	0.000

[illegible]

© 2000 Blackwell Science Ltd
Journal of Internal Medicine 247: 395–401

© 2004 Blackwell Publishing Ltd
Journal of Internal Medicine 255: 103–110