





GOLDPARK

WORTH MORE™

CONSTRUCTION SUMMARY

Lot: 129

Model: 40.02 B VALLEYVIEW

Project/Phase: Pine Valley Forevergreen / 1

FRAMING

Invoice	Qty.	Description
2326 72,631	1	MASTER ENSUITE: SHOWER NICHE [SHAMPOO SHELF] - COMPLETE WITH MATCHING MARBLE JAMBS ON 4 SIDES, STANDARD TILE, APPROX. 12 X 18 INSTALLED VERTICALLY
2326 72,385	1	.GREAT ROOM - OPT. COFFERED CEILING - AS PER PLAN
2326 72,387	1	.GREAT ROOM - OPT. WAFFLE CEILING, BEAM DETAIL AS PER PLAN (6 BOXES) OPTION # 1 - CTR-B07
2326 72,384	1	.BREAKFAST ROOM OPT. COFFERED CEILING - AS PER PLAN
2326  NoCat	1	.**CUSTOM LAYOUT** DELETE CLOSET AT LAUNDRY ROOM - LEAVE OPEN SPACE
2326  NoCat	1	.GREAT ROOM: DO *NOT* INSTALL STANDARD CAST STONE MANTLE - LEAVE JUST PAINTED DRYWALL

INTERIOR TRIM AND DOORS

Invoice	Qty.	Description
2326  NoCat	1	.GREAT ROOM: DO *NOT* INSTALL STANDARD CAST STONE MANTLE - LEAVE JUST PAINTED DRYWALL
2326  NoCat	1	.GREAT ROOM - OPT. COFFERED CEILING - AS PER PLAN
2326  NoCat	1	.GREAT ROOM - OPT. WAFFLE CEILING, BEAM DETAIL AS PER PLAN (6 BOXES) OPTION # 1 - CTR-B07
2326  NoCat	1	.BREAKFAST ROOM OPT. COFFERED CEILING - AS PER PLAN
2326  NoCat	1	.**CUSTOM LAYOUT** DELETE CLOSET AT LAUNDRY ROOM - LEAVE OPEN SPACE

MISC.

Invoice	Qty.	Description

Page 3 of 5

Printed and Sent: 14-Jun-20





# SCHEDULE 'F'

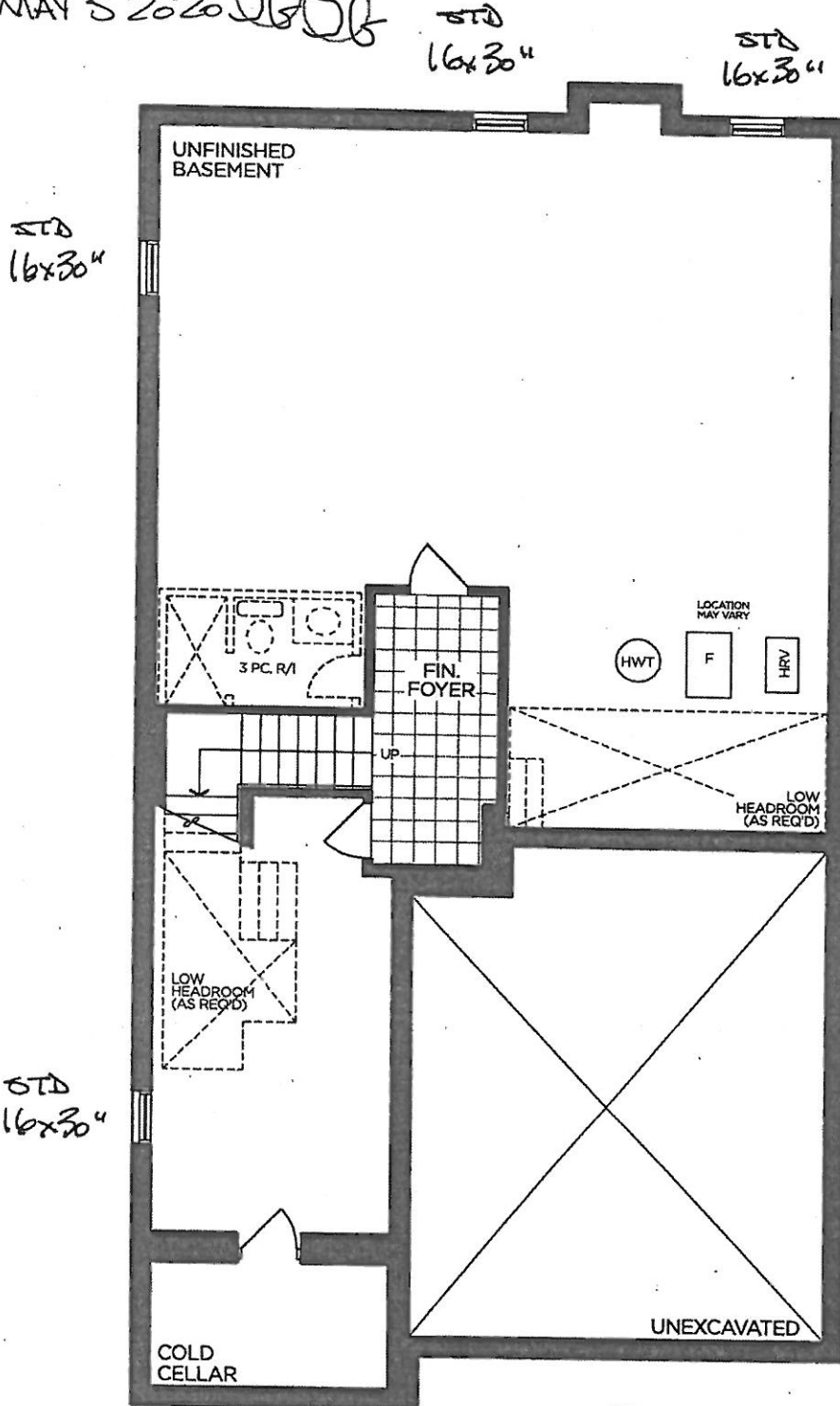


PV-129 *see attached*  
 MAR 16 2020

PV-129  
 MAY 5 2020 *SSS*

## The Valleyview 40' SERIES

Elevation A • 3,145 sq.ft.  
 → Elevation B • 3,170 sq.ft.



BASEMENT | ELEV. A

*BACK-FLOW  
 PREVENTER VALVE*

VENDOR

PURCHASER

PURCHASER

**GOLDPARK**  
 WORTH MORE™

Prices, figures, illustrations, sizes, features and finishes are subject to change without notice. Areas and dimensions are approximate and actual usable floor space may vary from the stated area. Layout may be reverse of the unit purchased. E. & O.E. 4002



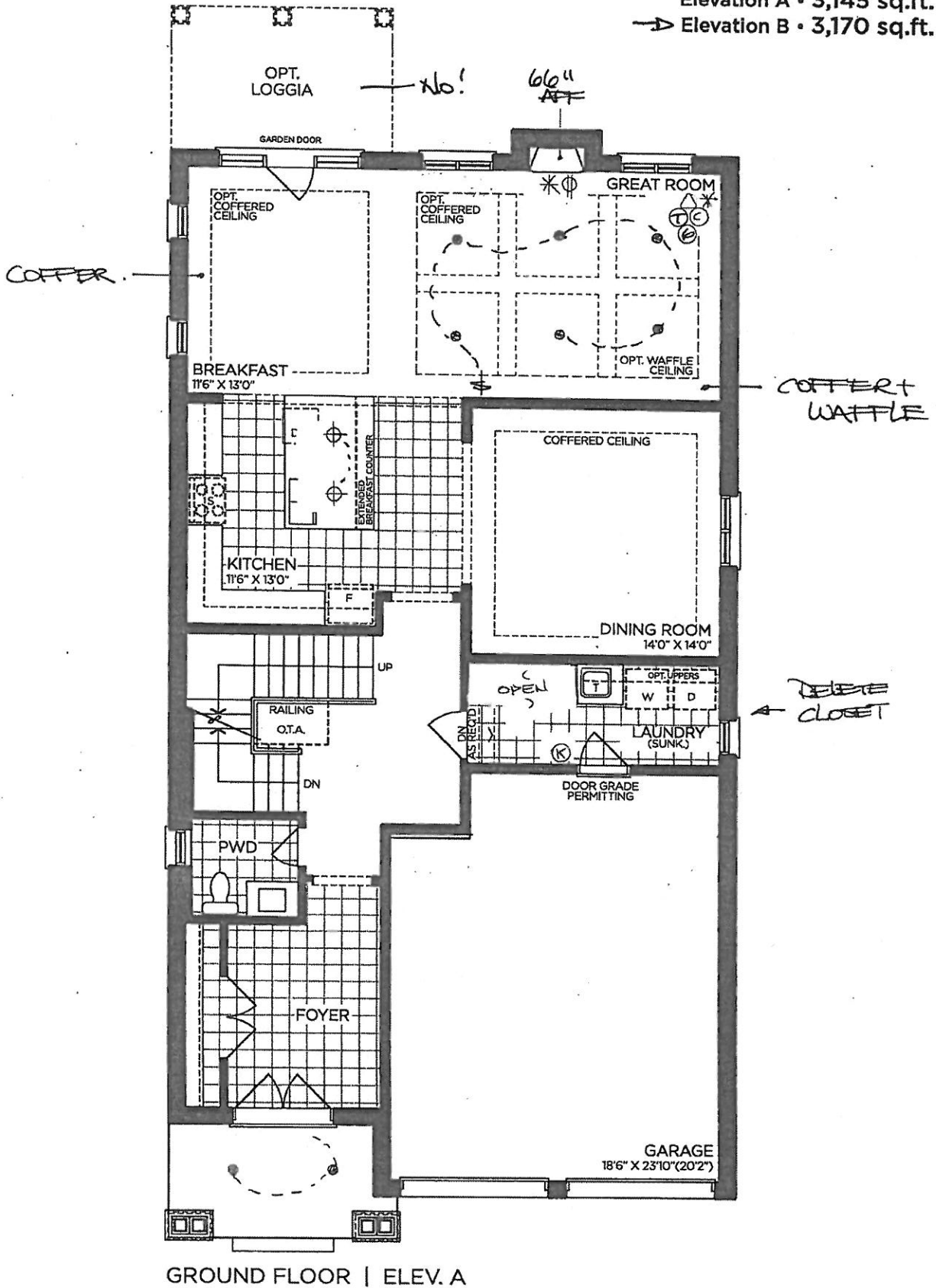
SCHEDULE 'F'

PV-129 *see email*  
MARCH 16 2020

PV-129  
MAY 5 2020 *SG SG*

# The Valleyview 40' SERIES

Elevation A • 3,145 sq.ft.  
→ Elevation B • 3,170 sq.ft.



GROUND FLOOR | ELEV. A

VENDOR

PURCHASER

PURCHASER

## GOLDPARK

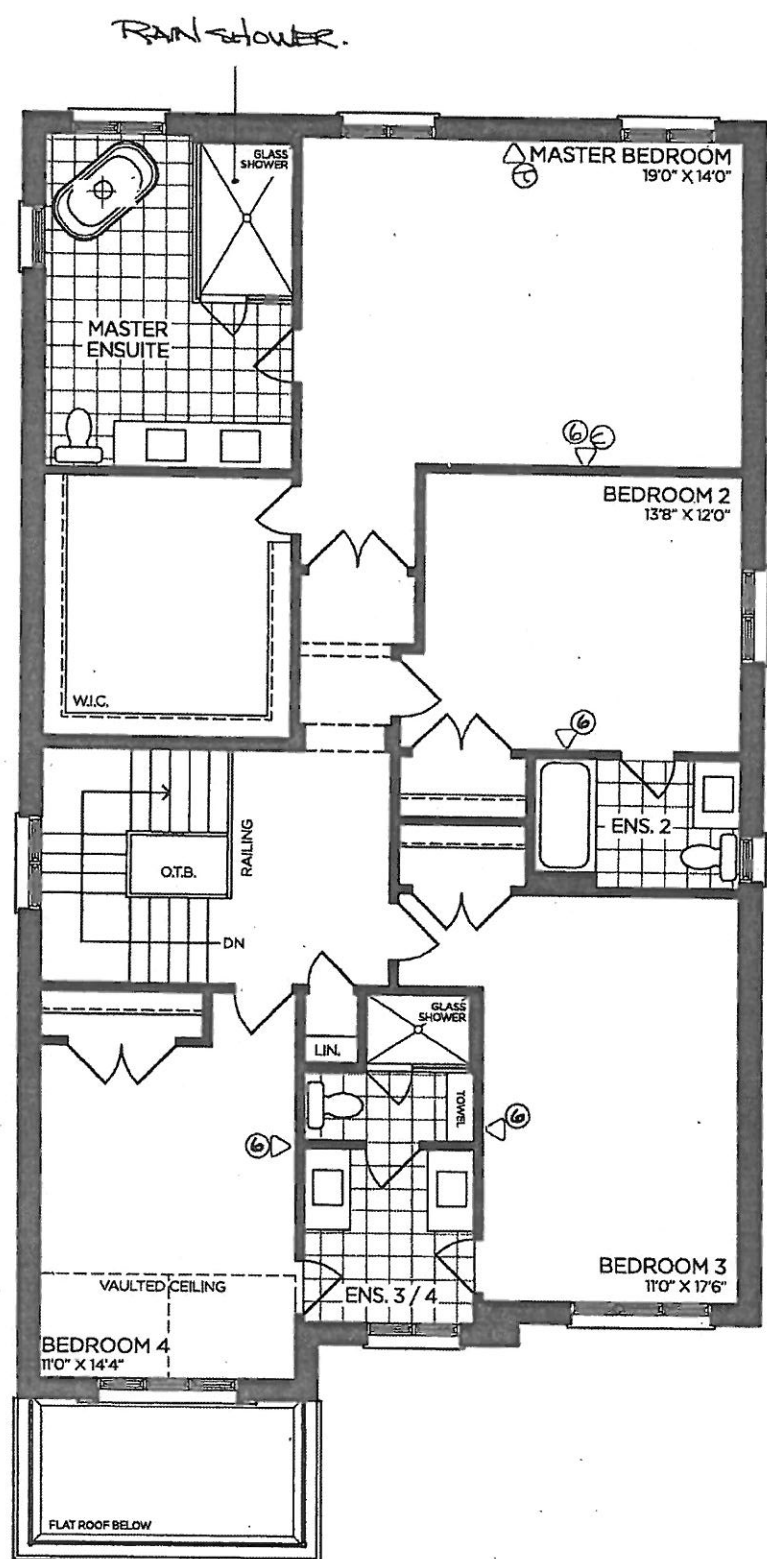
WORTH MORE™

Prices, figures, illustrations, sizes, features and finishes are subject to change without notice. Areas and dimensions are approximate and actual usable floor space may vary from the stated area. Layout may be reverse of the unit purchased. E. & O.E. 4002

SCHEDULE 'F'



PV-129 <sup>see annex</sup>  
MAR 16 2020  
PV-129 MAY 5 2020 <sup>5050</sup>  
The Valleyview 40' SERIES  
Elevation A • 3,145 sq.ft.  
→ Elevation B • 3,170 sq.ft.



SECOND FLOOR | ELEV. A

VENDOR

PURCHASER

PURCHASER

GOLDPARK  
WORTH MORE™

Prices, figures, illustrations, sizes, features and finishes are subject to change without notice. Areas and dimensions are approximate and actual usable floor space may vary from the stated area. Layout may be reverse of the unit purchased. E. & O.E. 4002

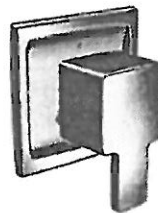
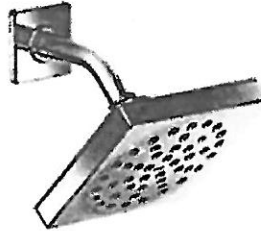


PLUMBING UPGRADES



POSI-TEMP SHOWER ONLY\* W/ 3 FUNCTION TRANSFER  
VALVE/TRIM AND SLIDE BAR WITH HAND SHOWER

MOEN - 90 DEGREE



☒ CHROME

☐ BRUSHED NICKEL

☐ MATTE BLACK

☐ from WALL

☒ from CEILING

MODEL TS2712EP / 3372 / TS4172 / 62320 / S3879EP / A721

Lot# 129

Room: MASTER ENSUITE	Signature: [Signature]
Date: MAY 5 2020	Signature: [Signature]

PV-129  
Jan. 11, 2021



## MICROWAVE OVEN BUILT-IN TRIM KIT INSTALLATION INSTRUCTIONS

Built-In Trim Kit Models MK2167, MK2160

UL listed for use over any electric or gas built-in oven, up to 30" (76.2 cm) wide

## INSTRUCTIONS D'INSTALLATION GARNITURE ENCASTRÉE POUR FOUR À MICRO-ONDES

Garniture encastrée pour modèles MK2167, MK2160

Homologation UL pour utilisation au-dessus de tous les fours encastrés électriques ou gaz, jusqu'à 30" (76,2 cm) de largeur

### Table of Contents / Table des matières

MICROWAVE OVEN SAFETY .....	1	SÉCURITÉ DU FOUR À MICRO-ONDES .....	7
INSTALLATION INSTRUCTIONS .....	2	INSTRUCTIONS D'INSTALLATION .....	7
Tools and Parts .....	2	Outils et pièces .....	7
Location Requirements .....	2	Exigences d'emplacement .....	7
Required Cutout Dimensions .....	2	Dimensions nécessaires de l'ouverture d'encastrement .....	8
Trim Kit Frame Dimensions .....	3	Dimensions du cadre de la trousse de garniture .....	8
Electrical Requirements .....	3	Spécifications électriques .....	9
Prepare Microwave Oven .....	3	Préparation du four à micro-ondes .....	9
Prepare Cutout/Cabinet Opening .....	4	Préparation de l'ouverture d'encastrement .....	10
Install the Microwave Oven .....	5	Installation du four à micro-ondes .....	11
Install Trim Kit Frame .....	6	Installation du cadre de la trousse de garniture .....	12

## MICROWAVE OVEN SAFETY

### Your safety and the safety of others are very important.

We have provided many important safety messages in this manual and on your appliance. Always read and obey all safety messages.



This is the safety alert symbol.

This symbol alerts you to potential hazards that can kill or hurt you and others.

All safety messages will follow the safety alert symbol and either the word "DANGER" or "WARNING."

These words mean:

**▲ DANGER**

You can be killed or seriously injured if you don't immediately follow instructions.

**▲ WARNING**

You can be killed or seriously injured if you don't follow instructions.

All safety messages will tell you what the potential hazard is, tell you how to reduce the chance of injury, and tell you what can happen if the instructions are not followed.

PV-129  
Jan. 11, 2021



## INSTALLATION INSTRUCTIONS

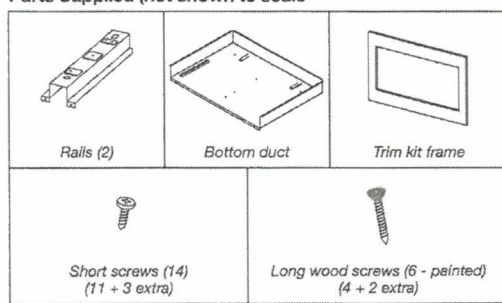
### Tools and Parts

#### Tools Needed

Gather the required tools and parts before starting installation. Read and follow the instructions provided with any tools listed here.

- Measuring tape
- Drill
- Pencil
- 7/64" drill bit
- Phillips screwdriver

#### Parts Supplied (not shown to scale)

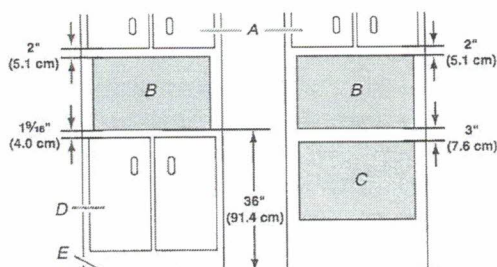


### Location Requirements

The microwave oven may be installed over a built-in oven. If installing over a built-in oven, make sure there is a minimum of 3" (7.6 cm) between the top of the lower oven cutout and the microwave oven cutout floor.

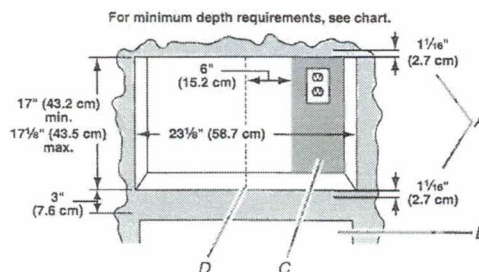
The microwave oven may also be installed in a cabinet by itself (without a built-in oven below). For best usability, we recommend a minimum distance of 36" (91.4 cm) from the floor to the cutout floor.

Make sure the surrounding cabinetry has clearance to open and close freely. Allow a clearance of at least 1 1/8" (4.0 cm) below the cutout floor (3" [7.6 cm] for installation above a built-in oven), and a clearance of at least 2" (5.1 cm) above the cutout opening.



- A. Upper cabinet
- B. Microwave oven cutout
- C. Lower oven cutout
- D. Lower cabinets
- E. Floor

### Required Cutout Dimensions



- A. Trim kit frame overhang
- B. Cutout for lower oven
- C. Recommended region for receptacle location (no less than 6" [15.2 cm] to the right of cutout centerline)
- D. Cutout centerline

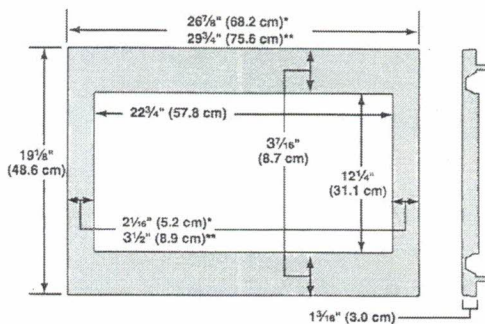
Receptacle Location	Minimum Depth
Within recommended region	18" (45.7 cm) with flush receptacle; 21" (53.2 cm) with non-flush receptacle
Outside recommended region	19 1/2" (49.5 cm) with flush receptacle; 22 1/2" (57.2 cm) with non-flush receptacle

#### NOTES:

- Depth requirements depend upon receptacle and its location within or outside of recommended region. See illustration and chart above.
- Height dimension is critical: 17" (43.2 cm) minimum, 17 1/2" (43.5 cm) maximum.
- Width measurement has  $\pm 1/16"$  (2 mm) tolerance.
- 3" (7.6 cm) minimum dimension is from lower oven cutout ceiling to microwave oven cutout floor.
- Trim kit frame extends 1 1/8" (2.7 cm) above and below the cutout opening.

PV-129  
Jan-11, 2021

### Trim Kit Frame Dimensions



\*27" (68.6 cm) trim kit

\*\*30" (76.2 cm) trim kit

### Electrical Requirements

#### ⚠ WARNING



#### Electrical Shock Hazard

Plug into a grounded 3 prong outlet.

Do not remove ground prong.

Do not use an adapter.

Do not use an extension cord.

Failure to follow these instructions can result in death, fire, or electrical shock.

Observe all governing codes and ordinances.

#### Required:

- A 120 volt, 60 Hz, AC only, 15- or 20-amp electrical supply with a fuse or circuit breaker.

#### Recommended:

- A time-delay fuse or time-delay circuit breaker.
- A separate circuit serving only this microwave oven.

### GROUNDING INSTRUCTIONS

#### ■ For all cord connected appliances:

The microwave oven must be grounded. In the event of an electrical short circuit, grounding reduces the risk of electric shock by providing an escape wire for the electric current. The microwave oven is equipped with a cord having a grounding wire with a grounding plug. The plug must be plugged into an outlet that is properly installed and grounded.

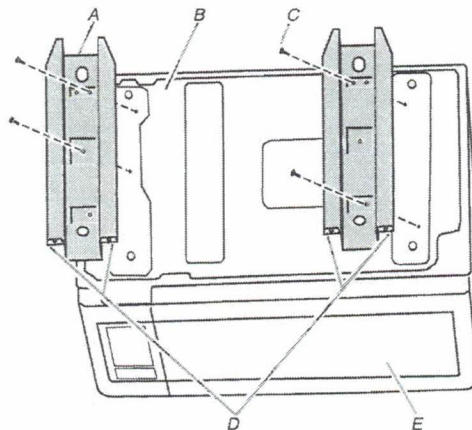
**WARNING:** Improper use of the grounding plug can result in a risk of electric shock. Consult a qualified electrician or serviceman if the grounding instructions are not completely understood, or if doubt exists as to whether the microwave oven is properly grounded.

Do not use an extension cord. If the power supply cord is too short, have a qualified electrician or serviceman install an outlet near the microwave oven.

### SAVE THESE INSTRUCTIONS

#### Prepare Microwave Oven

1. Unplug microwave oven before proceeding with installation.
2. Remove any loose items inside microwave oven.
3. Gently turn microwave oven onto its top, with the door facing forward (toward installer).
4. Align the two rails on the microwave oven bottom, as shown, making sure the flanges are forward and pointing up.



A. Rails (2)  
B. Microwave oven bottom  
C. Short screws (4)

D. Flanges  
E. Door

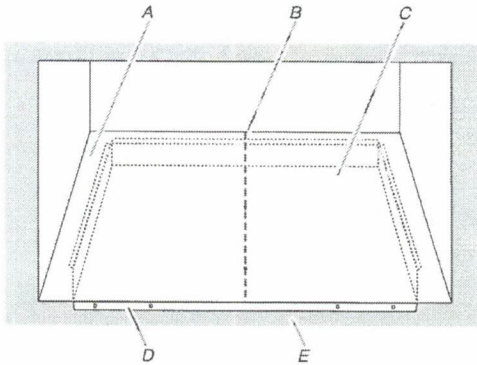
5. Secure the rails to the microwave oven bottom using four short screws.



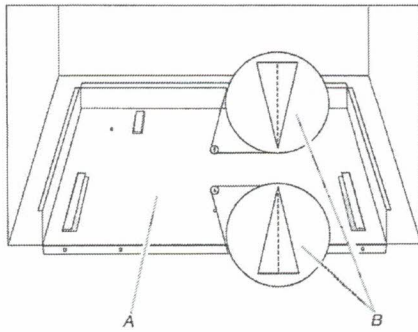
PV-129  
Jan. 11, 2024

## Prepare Cutout/Cabinet Opening

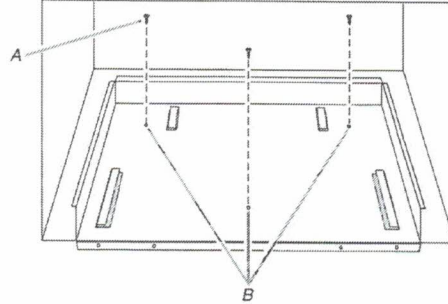
1. On the cutout floor, find and mark the centerline.
2. Place the bottom duct in the opening, with the flange resting against the bottom front facing of the opening.



3. Align the center arrows on the bottom duct with the centerline drawn in Step 1 above.



4. Mark the three mounting holes through the bottom duct onto the cutout floor.



5. Using 7/64" drill, drill pilot holes into the three holes marked in Step 4.
6. Realign and install the bottom duct with three short screws.
7. Using 7/64" drill, drill pilot holes through the four mounting holes of the bottom duct flange into the bottom front facing of the cutout/cabinet opening.

