

GOLDPARK

WORTH MORE™

CONSTRUCTION SUMMARY

Lot: 130

Model: 40.02 A VALLEYVIEW

Project/Phase: Pine Valley Forevergreen / 1

CERAMIC

Invoice	Qty.	Description
2358	1	**CUSTOM LAYOUT** MASTER ENSUITE: REVERSE LOCATION OF VANITY/SHOWER. VANITY TO BE ON WALL BACKING BEDROOM, SHOWER TO BE APPROX 42X80" & HAVE GLASS AT FRONT ONLY
22Jul20 NoCat		

CONCRETE AND DRAIN

Invoice	Qty.	Description
2288	1	BACK-FLOW PREVENTER VALVE
22Jul20 NoCat		

CROWN MOULDING

Invoice	Qty.	Description
2358	1	.BREAKFAST ROOM - OPT. COFFERED CEILING AS PER PLAN
22Jul20 NoCat		
2358	1	.GREAT ROOM - OPT. COFFERED CEILING AS PER PLAN
22Jul20 NoCat		

DRYWALL

Invoice	Qty.	Description
2358	1	.BREAKFAST ROOM - OPT. COFFERED CEILING AS PER PLAN
22Jul20 NoCat		
2358	1	.GREAT ROOM - OPT. COFFERED CEILING AS PER PLAN
22Jul20 NoCat		
2358	1	**CUSTOM LAYOUT** LAUNDRY ROOM: DELETE CLOSET, CREATE OPEN SPACE - LEAVE NIBB WALL AT CABINETRY
22Jul20 NoCat		
2358	1	**CUSTOM LAYOUT** DELETE CLOSET AT BEDROOM 3 - COMBINE REACH IN CLOSETS TO CREATE 1 WALK-IN CLOSET ACCESSIBLE FROM BEDROOM 2- SEE PLAN FOR LOCATION
22Jul20 NoCat		
2358	1	**CUSTOM LAYOUT** MASTER ENSUITE: ADD WATER CLOSET (approx 36x66" inside), COMPLETE WITH PARTITION WALLS, DOOR, LIGHT AND FAN - CENTER TOILET IN WATER CLOSET
22Jul20 NoCat		
2358	1	.FOYER: REDUCE SIZE OF DOUBLE DOOR CLOSET, LEAVING APPROX 60" OPEN SPACE BESIDE - SEE PLAN FOR LOCATION
22Jul20 NoCat		

DisciplineMS.rpt 26jun20

Page 1 of 7  
Printed and Sent: 22-Jul-20



**Lot: 130****Model: 40.02 A VALLEYVIEW****Project/Phase: Pine Valley Forevergreen / 1**

# ELECTRICAL

Invoice	Qty.	Description
2358 72,289 22Jul20	4	.BREAKFAST ROOM: 4" E/S LED INTERIOR POT LIGHT - GROUND FLOOR - EACH
2358 72,278 22Jul20	1	.BREAKFAST: ADDITIONAL INTERIOR SWITCH  FOR POTLIGHTS **SEE PLAN FOR PREFERRED SWITCH LOCATION
2358 72,280 22Jul20	1	.KITCHEN: CEILING OUTLET: ADDITIONAL REINFORCED CEILING OUTLET - LOCATE APPROX CENTERED ABOVE ISLAND - USE SAME SWITCH AS STANDARD LIGHT
2358 22Jul20 NoCat	1	**CUSTOM LAYOUT** MASTER ENSUITE: ADD WATER CLOSET (approx 36x66" inside), COMPLETE WITH PARTITION WALLS, DOOR, LIGHT AND FAN - CENTER TOILET IN WATER CLOSET
2358 22Jul20 NoCat	1	**CUSTOM LAYOUT** MASTER ENSUITE: REVERSE LOCATION OF VANITY/SHOWER. VANITY TO BE ON WALL BACKING BEDROOM, SHOWER TO BE APPROX 42X80" & HAVE GLASS AT FRONT ONLY

## EXTERIOR COLOURS

Invoice	Qty.	Description
2358	1	EXTERIOR COLOUR PACKAGE # BR.4
22Jul20 NoCat		

# FORMING

Invoice	Qty.	Description
2288 22Jul20 NoCat	2	.BASEMENT WINDOWS - UPGRADE BASEMENT WINDOW SIZE TO 30 " X 24" - 8" FRAME
2312 72,672 22Jul20	2	**DELETE** BASEMENT WINDOWS - EGRESS BASEMENT WINDOW 47 " X 35" - 8" FRAME  DELETE FROM PREVIOUS ORDER
2312 22Jul20 NoCat	2	.BASEMENT WINDOWS - UPGRADE BASEMENT WINDOW SIZE TO 30 " X 24" - 8" FRAME (REAR WINDOWS)



GOLDPARK

WORTH MORE™

CONSTRUCTION SUMMARY

Lot: 130

Model: 40.02 A VALLEYVIEW

Project/Phase: Pine Valley Forevergreen / 1

HVAC		
Invoice	Qty.	Description
2358	1	**CUSTOM LAYOUT** MASTER ENSUITE: ADD WATER CLOSET (approx 36x66" inside), COMPLETE WITH PARTITION WALLS, DOOR, LIGHT AND FAN - CENTER TOILET IN WATER CLOSET
22Jul20 NoCat		

INTERIOR TRIM AND DOORS		
Invoice	Qty.	Description
2358	1	.BREAKFAST ROOM - OPT. COFFERED CEILING AS PER PLAN
22Jul20 NoCat		
2358	1	.GREAT ROOM - OPT. COFFERED CEILING AS PER PLAN
22Jul20 NoCat		
2358	1	**CUSTOM LAYOUT** LAUNDRY ROOM: DELETE CLOSET, CREATE OPEN SPACE - LEAVE NIBB WALL AT CABINETRY
22Jul20 NoCat		
2358	1	**CUSTOM LAYOUT** DELETE CLOSET AT BEDROOM 3 - COMBINE REACH IN CLOSETS TO CREATE 1 WALK-IN CLOSET ACCESSIBLE FROM BEDROOM 2- SEE PLAN FOR LOCATION
22Jul20 NoCat		
2358	1	**CUSTOM LAYOUT** MASTER ENSUITE: ADD WATER CLOSET (approx 36x66" inside), COMPLETE WITH PARTITION WALLS, DOOR, LIGHT AND FAN - CENTER TOILET IN WATER CLOSET
22Jul20 NoCat		
2358	1	**CUSTOM LAYOUT** MASTER ENSUITE: REVERSE LOCATION OF VANITY/SHOWER. VANITY TO BE ON WALL BACKING BEDROOM, SHOWER TO BE APPROX 42X80" & HAVE GLASS AT FRONT ONLY
22Jul20 NoCat		
2358	1	.FOYER: REDUCE SIZE OF DOUBLE DOOR CLOSET, LEAVING APPROX 60" OPEN SPACE BESIDE - SEE PLAN FOR LOCATION
22Jul20 NoCat		

KITCHEN AND BATH CABINETRY		
Invoice	Qty.	Description
2358	1	**CUSTOM LAYOUT** MASTER ENSUITE: REVERSE LOCATION OF VANITY/SHOWER. VANITY TO BE ON WALL BACKING BEDROOM, SHOWER TO BE APPROX 42X80" & HAVE GLASS AT FRONT ONLY
22Jul20 NoCat		

NETWORK AND WIRING		
Invoice	Qty.	Description
2358	1	.GREAT ROOM: CONDUIT PIPE - FOR WALL MOUNT TV - LOCATE APPROX. 66" A.F.F. ABOVE FIREPLACE, THRU TO BASEMENT AND TERMINATE AT CABLE
72,259 22Jul20		

DisciplineMS.rpt 26jun20

Page 5 of 7  
Printed and Sent: 22-Jul-20

PAINT

Invoice	Qty.	Description
2358  22Jul20 NoCat	1	.BREAKFAST ROOM - OPT. COFFERED CEILING AS PER PLAN
2358  22Jul20 NoCat	1	.GREAT ROOM - OPT. COFFERED CEILING AS PER PLAN
2358  22Jul20 NoCat	1	**CUSTOM LAYOUT** LAUNDRY ROOM: DELETE CLOSET, CREATE OPEN SPACE - LEAVE NIBB WALL AT CABINETRY
2358  22Jul20 NoCat	1	**CUSTOM LAYOUT** DELETE CLOSET AT BEDROOM 3 - COMBINE REACH IN CLOSETS TO CREATE 1 WALK-IN CLOSET ACCESSIBLE FROM BEDROOM 2- SEE PLAN FOR LOCATION
2358  22Jul20 NoCat	1	**CUSTOM LAYOUT** MASTER ENSUITE: ADD WATER CLOSET (approx 36x66" inside), COMPLETE WITH PARTITION WALLS, DOOR, LIGHT AND FAN - CENTER TOILET IN WATER CLOSET
2358  22Jul20 NoCat	1	**CUSTOM LAYOUT** MASTER ENSUITE: REVERSE LOCATION OF VANITY/SHOWER. VANITY TO BE ON WALL BACKING BEDROOM, SHOWER TO BE APPROX 42X80" & HAVE GLASS AT FRONT ONLY
2358  22Jul20 NoCat	1	.FOYER: REDUCE SIZE OF DOUBLE DOOR CLOSET, LEAVING APPROX 60" OPEN SPACE BESIDE - SEE PLAN FOR LOCATION

PLUMBING

Invoice	Qty.	Description
2358  22Jul20 NoCat	1	**CUSTOM LAYOUT** MASTER ENSUITE: ADD WATER CLOSET (approx 36x66" inside), COMPLETE WITH PARTITION WALLS, DOOR, LIGHT AND FAN - CENTER TOILET IN WATER CLOSET

WINDOWS - BASEMENT

Invoice	Qty.	Description
2288 72,672 22Jul20	2	**DELETE** BASEMENT WINDOWS - EGRESS BASEMENT WINDOW 47 " X 35" - 8" FRAME
2288 72,351 22Jul20	2	.BASEMENT WINDOWS - UPGRADE BASEMENT WINDOW SIZE TO 30 " X 24" - 8" FRAME
2312 72,351 22Jul20	2	.BASEMENT WINDOWS - UPGRADE BASEMENT WINDOW SIZE TO 30 " X 24" - 8" FRAME  REAR WINDOWS



CONSTRUCTION SUMMARY

Lot: 130

Model: 40.02 A VALLEYVIEW

Project/Phase: Pine Valley Forevergreen / 1

WINDOWS AND DOORS

Invoice	Qty.	Description
2358  22Jul20 NoCat	1	.BREAKFAST ROOM: UPGRADE EXTERIOR GARDEN DOOR ASSEMBLY TO 8`
2358  22Jul20 NoCat	1	.BREAKFAST ROOM: UPGRADE EXTERIOR GARDEN DOOR ASSEMBLY TO 8`



# SCHEDULE 'F'

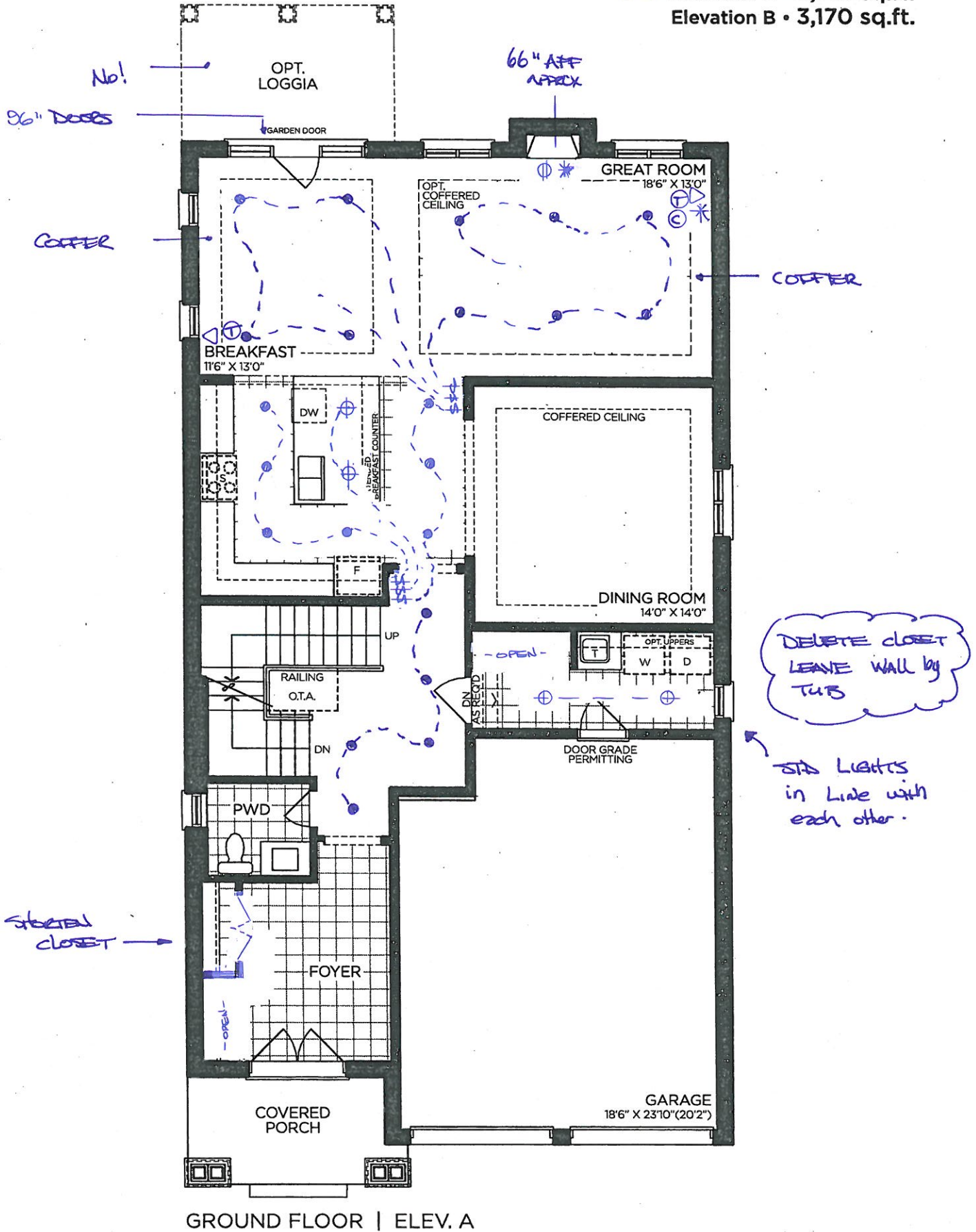


PV-130  
JUNE 8 2020

See  
attach.

## The Valleyview 40' SERIES

Elevation A • 3,145 sq.ft.  
Elevation B • 3,170 sq.ft.



VENDOR

PURCHASER

PURCHASER

**GOLDPARK**  
WORTH MORE™

Prices, figures, illustrations, sizes, features and finishes are subject to change without notice. Areas and dimensions are approximate and actual usable floor space may vary from the stated area. Layout may be reverse of the unit purchased. E. & O.E. 4002





SCHEDULE 'F'

PV-130  
JUNE 8 2020  
*See attachment*

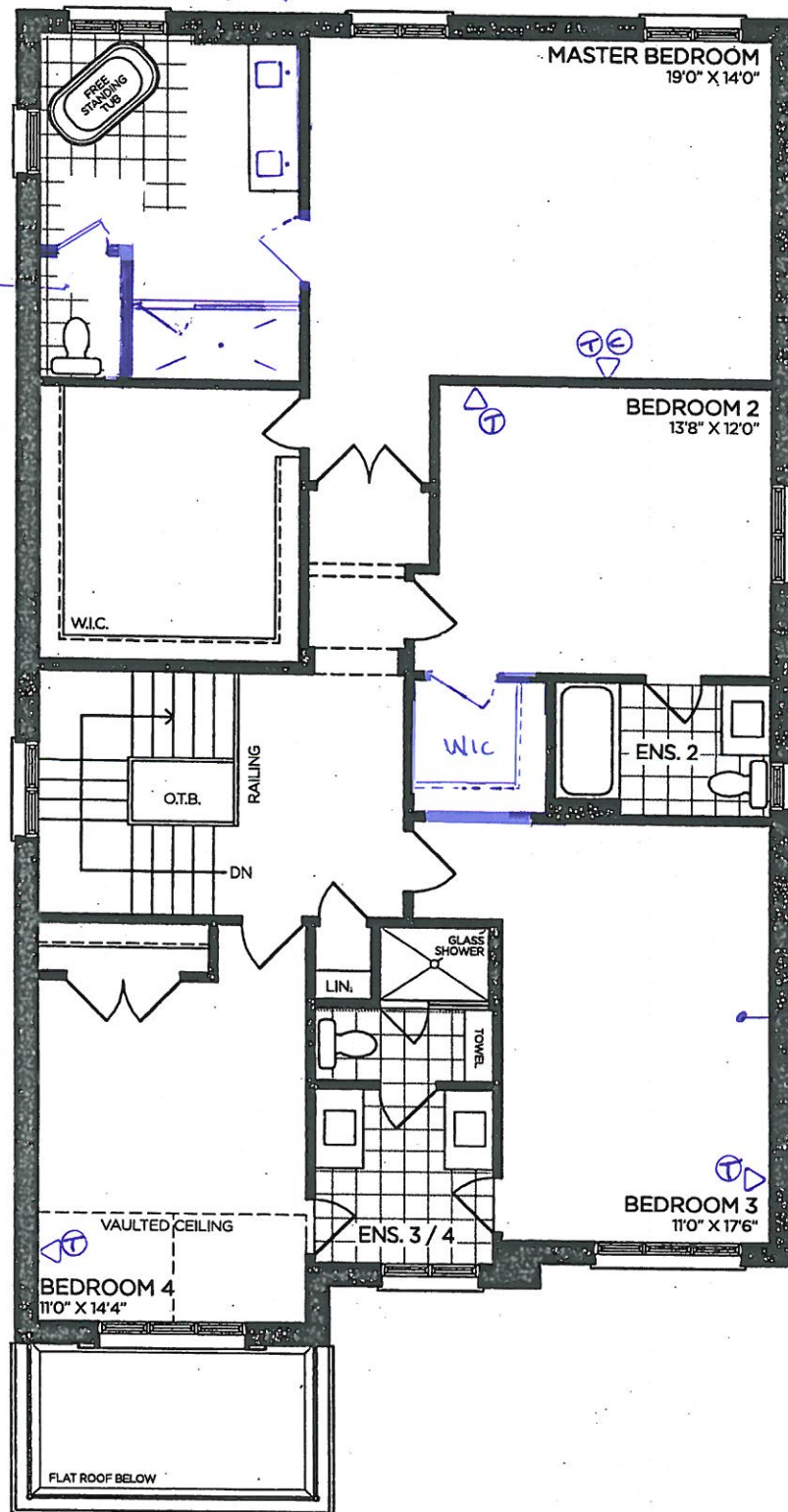
# The Valleyview

## 40' SERIES

→ Elevation A • 3,145 sq.ft.  
Elevation B • 3,170 sq.ft.

*RELOCATE ↓  
MAKE VANITY  
SMALLER.*

*ADD: WATER CLOSET  
Approx 36x66"  
(CENTER TOILET).  
RELOCATE  
SHOWER APPROX  
42x80"*



SECOND FLOOR | ELEV. A

VENDOR	
PURCHASER	
PURCHASER	

**GOLDPARK**  
WORTH MORE™

Prices, figures, illustrations, sizes, features and finishes are subject to change without notice. Areas and dimensions are approximate and actual usable floor space may vary from the stated area. Layout may be reverse of the unit purchased. E. & O.E. 4002

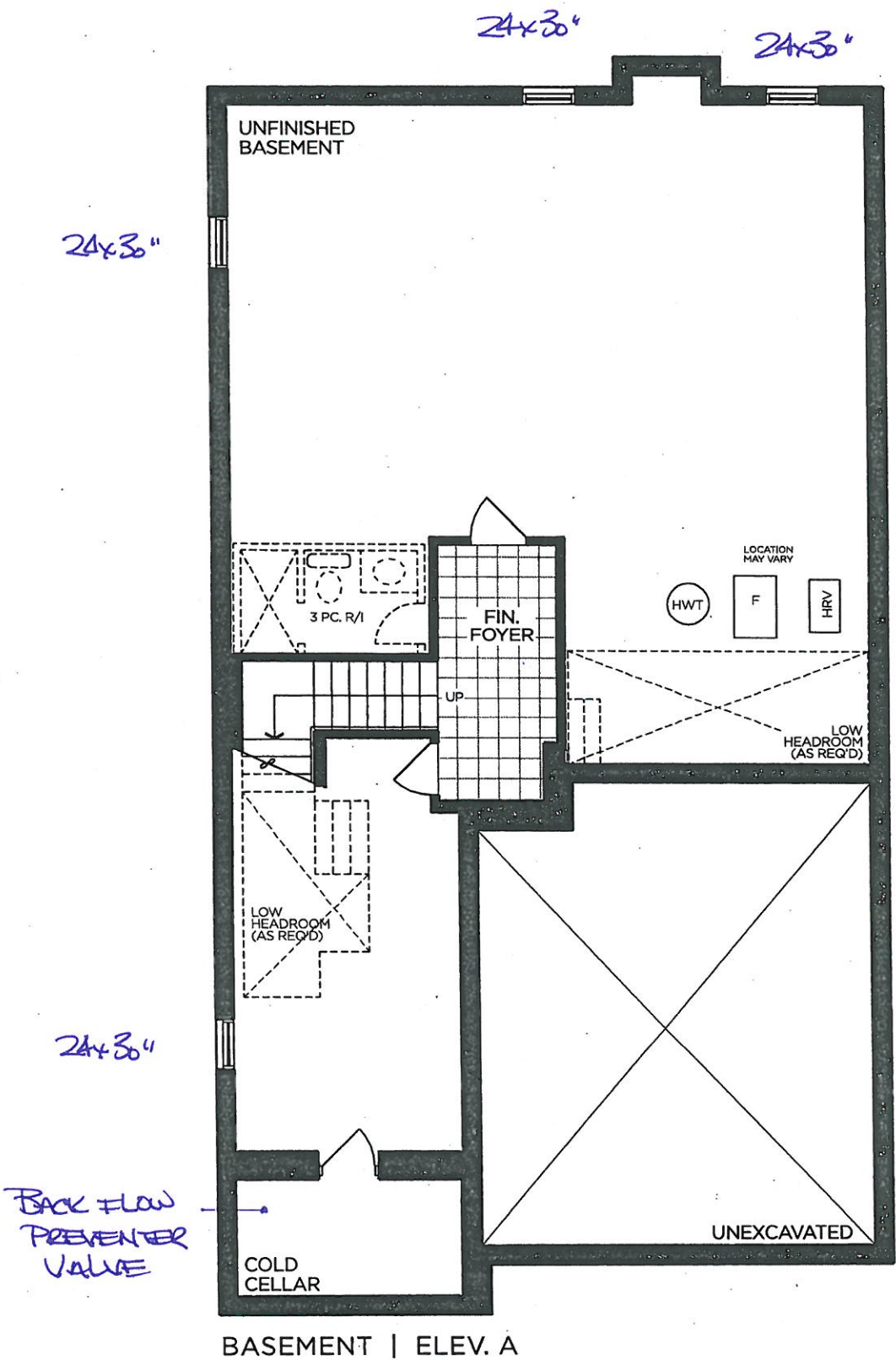
SCHEDULE 'F'



PV-130  
JUNE 8 2020  
*See attach*

The Valleyview  
40' SERIES

→ Elevation A • 3,145 sq.ft.  
Elevation B • 3,170 sq.ft.



VENDOR

PURCHASER

PURCHASER

GOLDPARK  
WORTH MORE™

Prices, figures, illustrations, sizes, features and finishes are subject to change without notice. Areas and dimensions are approximate and actual usable floor space may vary from the stated area. Layout may be reverse of the unit purchased. E. & O.E. 4002

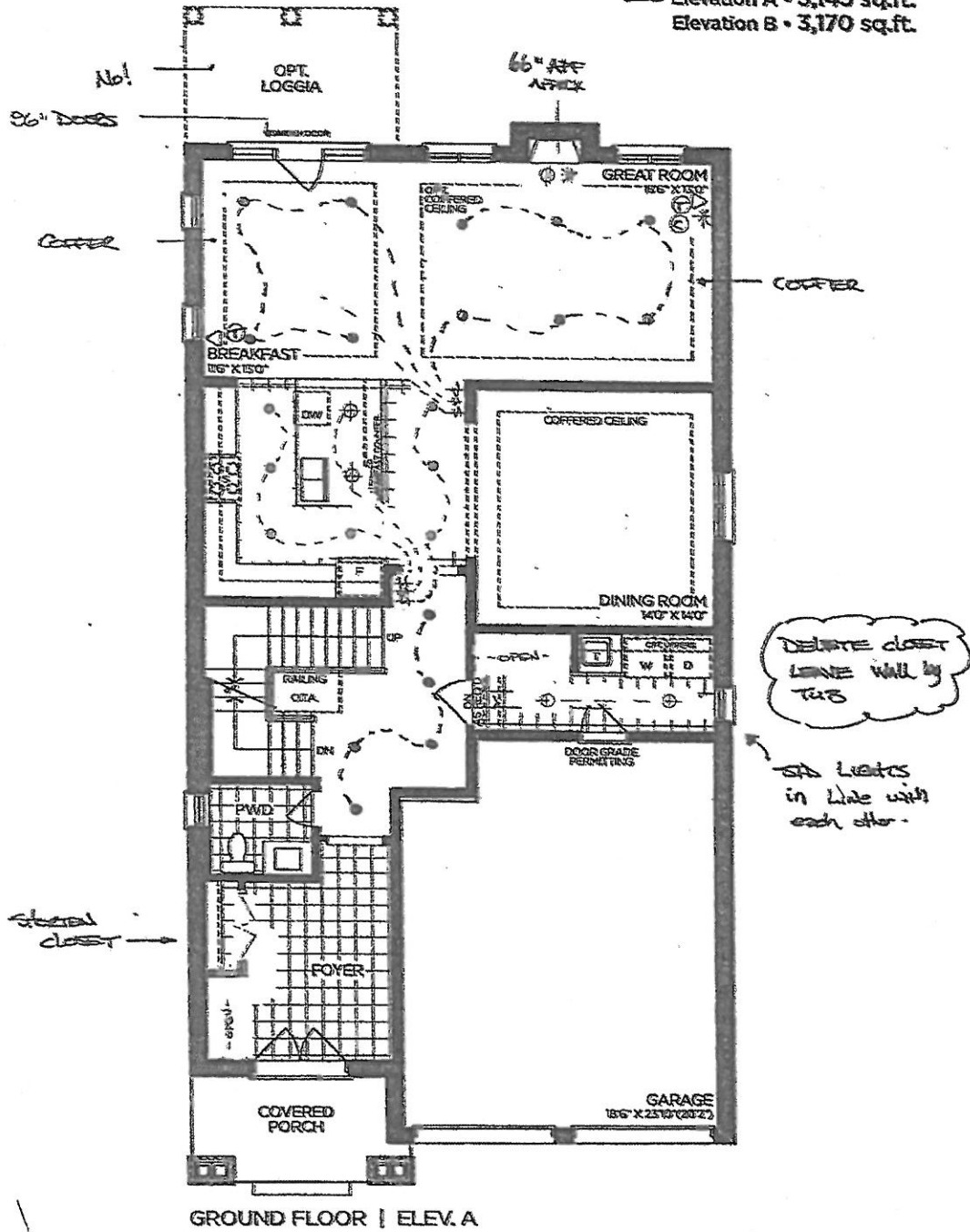
SCHEDULE 'F'



PL-130  
JUNE 8 2022

# The Valleyview 40' SERIES

→ Elevation A • 3,145 sq.ft.  
Elevation B • 3,170 sq.ft.



VENDOR  
PURCHASER  
PURCHASER

**GOLDPARK**  
WORTH MORE™

Prices, figures, illustrations, sizes, features and finishes are subject to change without notice. Areas and dimensions are approximate and actual usable floor space may vary from the stated area. Layout may be reverse of the unit purchased. E & O.E. 4002



SCHEDULE 'F'

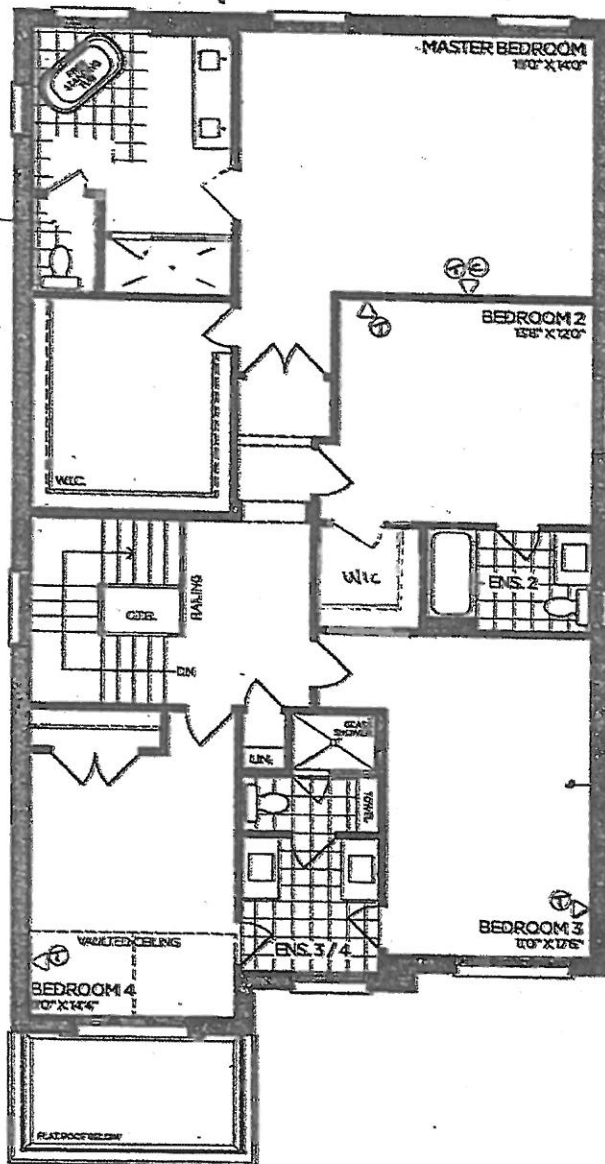
PV-130  
JUNE 8 2020

# The Valleyview 40' SERIES

→ Elevation A • 3,145 sq.ft.  
Elevation B • 3,170 sq.ft.

RELOCATE ↓  
MAKE VANITY  
SMALLER.

ADD WATER CLOSET  
APPROX 30x46"  
(CONVERT TOILET).  
RELOCATE  
SHOWER APPROX  
42x80" →



SECOND FLOOR | ELEV. A

VENDOR \_\_\_\_\_  
PURCHASER *[Signature]* \_\_\_\_\_  
PURCHASER *[Signature]* \_\_\_\_\_

**GOLDPARK**  
WORTH MORE

Prices, figures, illustrations, sizes, features and finishes are subject to change without notice. Areas and dimensions are approximate and actual usable floor space may vary from the stated area. Layout may be reverse of the unit purchased. E. & O.E. 4002



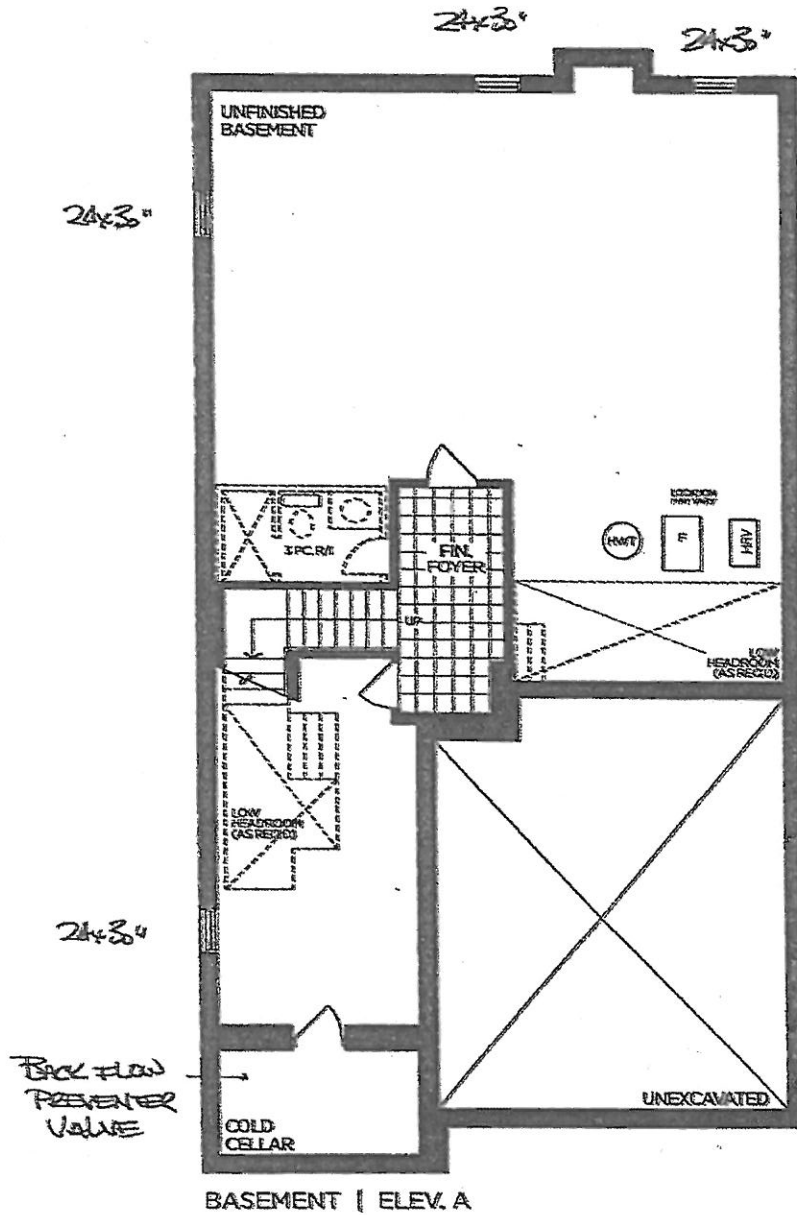
SCHEDULE F

PV-130

June 8 2020

The Valleyview  
40' SERIES

→ Elevation A • 3,145 sq.ft.  
Elevation B • 3,170 sq.ft.



BASEMENT | ELEV. A

VENDOR \_\_\_\_\_  
PURCHASER *BA* \_\_\_\_\_  
PURCHASER *BA* \_\_\_\_\_

**GOLDPARK**  
WORTH MORE

Prices, figures, illustrations, sizes, features and finishes are subject to change without notice. Areas and dimensions are approximate and actual usable floor space may vary from the stated area. Layout may be reverse of the unit purchased. E. & O.E. 4032



# Setting up your French Door Refrigerator

AV-130

Dec 21 20

## GETTING READY TO INSTALL THE REFRIGERATOR

Congratulations on your purchase of this Samsung French Door Refrigerator.

We hope you enjoy the state-of-art features and advantages that this new appliance offers.

### Selecting the best location for the refrigerator

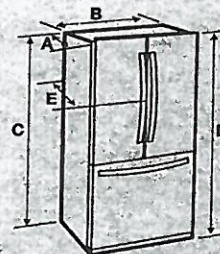
#### Choose:

- A location with easy access to a water supply.
- A location without direct exposure to sunlight.
- A location with a level floor.
- A location with enough space for the refrigerator doors to open easily.
- A location that provides sufficient space to the right, left, back, and top for air circulation.
- A location that allows you to move the refrigerator easily if it needs maintenance or service.
- Do not install the refrigerator where the temperature will go below 50 °F (10 °C).
- Do not locate the refrigerator where it may become wet.

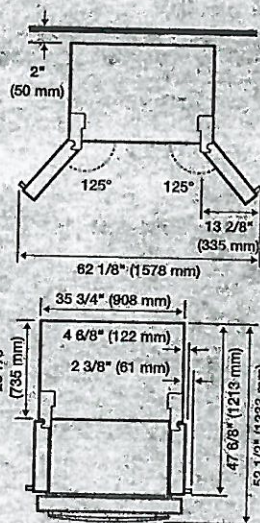
If the refrigerator does not have enough space, the internal cooling system may not work properly. If your refrigerator has an ice maker, allow extra space at the back for the water line connections. When you install the refrigerator next to a fixed wall, you need a minimum clearance of 3 3/4" (95 mm) between the refrigerator and wall to allow the door to swing open.

**Important:** Make sure that you can easily move your refrigerator to its final location by measuring doorways (both width and height), thresholds, ceilings, stairways, etc.

The following chart details the exact height and depth of this Samsung French Door Refrigerator.



Model	RF28HF**
Depth "A"	33 1/2" (851 mm)
Width "B"	35 6/8" (908 mm)
Height "C"	68 7/8" (1749 mm)
Overall Height "D"	70" (1777 mm)
Depth "E"	36" (913 mm)



- Each measurement based on the design dimension, so it may differ depending on the measuring method.



PV-130  
Dec 22



# KitchenAid® 30" (76.2 cm), 36" (91.4 cm), and 48" (121.9 cm) Commercial-Style Dual Fuel Convection Ranges

## PRODUCT MODEL NUMBERS

KDRS407V	KDRS483V	KDRU767V
KDRS463V	KDRU763V	KDRU783V
KDRS467V		

## ELECTRICAL CONNECTION

To properly install your range, you must determine the type of electrical connection you will be using and follow the instructions provided for it here.

- Range must be connected to the proper electrical voltage and frequency as specified on the model/serial/rating plate. The model/serial/rating plate is located on the right vertical surface of the oven door frame. Refer to the illustrations in "Product Dimensions" of the "Location Requirements" section.
- This range may be manufactured with a 4-wire power supply cord or may not include a power supply cord. If your range does not include a power supply cord, use a 4-wire power supply cord rated at 250 volts, 40 or 50 amps, and investigated for use with ranges

Range Rating*		Specified Rating of Power Supply Cord Kit and Circuit Protection	
120/240 Volts	120/208 Volts	Amps	Range Size
8.8–16.5 kW	7.8–12.5 kW	40 or 50**	30" (76.2 cm) 36" (91.4 cm)
16.6–22.5 kW	12.6–18.5 kW	50	48" (121.9 cm)

\* The NEC calculated load is less than the total connected load listed on the model/serial/rating plate.

\*\* If connecting to a 50-amp circuit, use a 50-amp rated cord with kit. For 50-amp rated cord kits, use kits that specify use with a nominal 13/8" (34.9 mm) diameter connection opening.

- A circuit breaker is recommended.
- Wire sizes and connections must conform with the rating of the range.
- The Tech Sheet is located behind the kick plate in a clear plastic bag.

## TYPE OF GAS

### Natural Gas:

This range is factory set for use with Natural gas. The model/serial/rating plate located on the right vertical surface of the oven door frame has information on the types of gas that can be used. If the types of gas listed do not include the type of gas available, check with the local gas supplier.

### LP Gas Conversion:

Conversion must be done by a qualified service technician.

No attempt shall be made to convert the range cooktop from the gas specified on the model/serial/rating plate for use with a different gas without consulting the serving gas supplier. To convert to LP gas, use the LP gas conversion kit provided with your range and see the "Gas Conversions" section. The parts for this kit are in the literature package supplied with the range.

## GAS SUPPLY LINE

- Provide a gas supply line of 3/4" (1.9 cm) rigid pipe to the range location. A smaller size pipe on longer runs may result in insufficient gas supply. With LP gas, piping or tubing size can be 1/2" (1.3 cm) minimum. Usually, LP gas suppliers determine the size and materials used in the system.

**NOTE:** Pipe-joint compounds that resist the action of LP gas must be used. Do not use TEFLON® tape.

† TEFLON is a registered trademark of Chemours.

## Flexible metal appliance connector:

- If local codes permit, a new CSA design-certified, 4-5 ft (122–152.4 cm) long, 3/8" (1.6 cm) or 3/4" (1.9 cm) I.D. flexible metal appliance connector may be used for connecting range to the gas supply line.

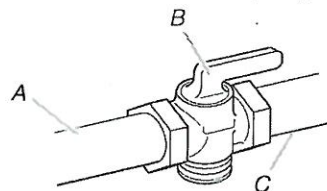


- A 1/2" (1.3 cm) male pipe thread is needed for connection to the female pipe threads of the inlet to the range pressure regulator.
- Do not kink or damage the flexible metal tubing when moving the range.

**IMPORTANT:** All connections must be wrench-tightened. Do not make connections to the gas regulator too tight. Making the connections too tight may crack the regulator and cause a gas leak. Do not allow the regulator to turn or move when tightening fittings.

- Must include a shut-off valve:

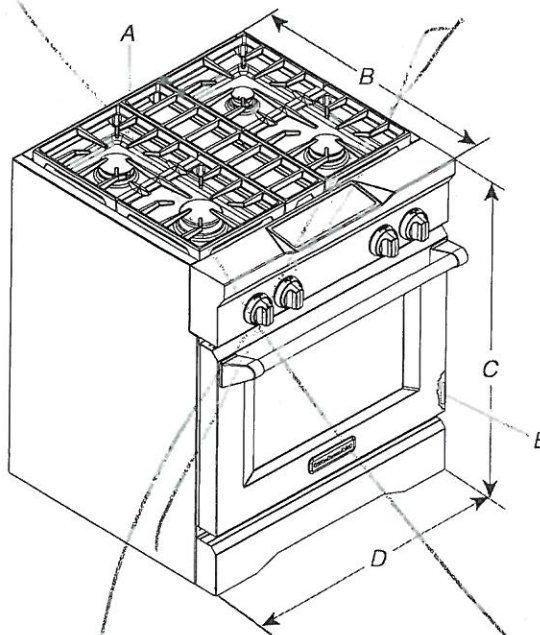
The supply line must be equipped with a manual shut-off valve. This valve should be located in the same room but external to the range opening such as an adjacent cabinet. It should be in a location that allows ease of opening and closing. Do not block access to shut-off valve. The valve is for turning on or shutting off gas to the range.



A. Gas supply line  
B. Shut-off valve "open" position  
C. To range

## PRODUCT DIMENSIONS

### 30" (76.2 cm) models

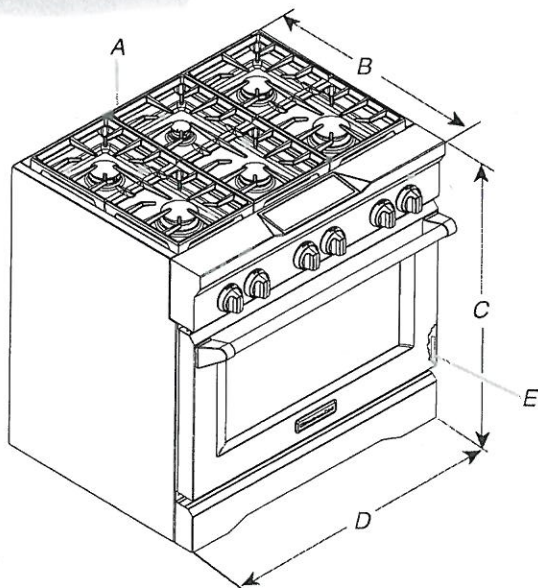


A. Optional backguard may be installed.  
B. 27 3/4" (70.5 cm) depth with control panel (See NOTE)  
C. 35 3/4" (90.8 cm) cooktop height when sitting on the wheels  
D. 30" (76.2 cm) width  
E. Model/serial/rating plate location



## PRODUCT DIMENSIONS CONTINUED

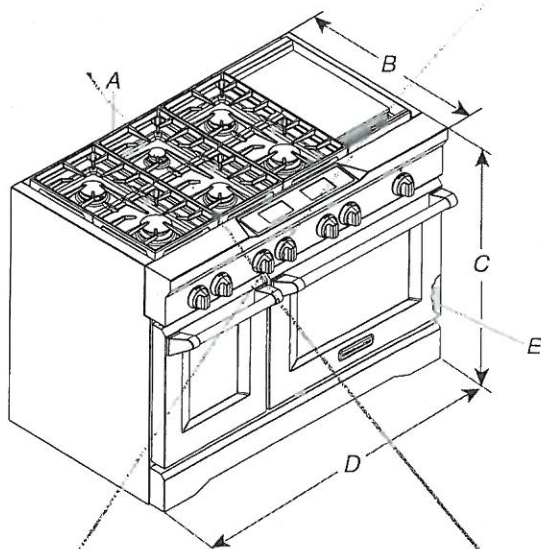
### 36" (91.4 cm) models



- A. Optional backguard may be installed.
- B. 27<sup>3</sup>/<sub>4</sub>" (70.5 cm) depth with control panel (See NOTE)
- C. 35<sup>3</sup>/<sub>4</sub>" (90.8 cm) cooktop height when sitting on the wheels
- D. 36" (91.4 cm) width
- E. Model/serial/rating plate location

### 48" (121.9 cm) models

**NOTE:** The following illustration is for dimension planning purposes only, and the locations and appearances of the features shown may not match those of your model.



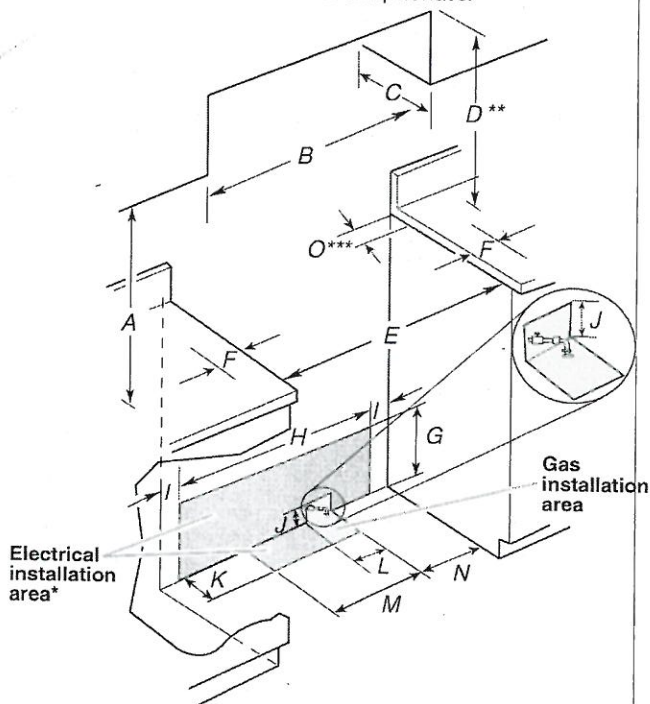
- A. Optional backguard may be installed.
- B. 27<sup>3</sup>/<sub>4</sub>" (70.5 cm) depth with control panel (See NOTE)
- C. 35<sup>3</sup>/<sub>4</sub>" (90.8 cm) cooktop height when sitting on the wheels
- D. 48" (121.9 cm) width
- E. Model/serial/rating plate location

**NOTE:** When installed in a 24" (61.0 cm) base cabinet with 25" (63.5 cm) countertop, front of oven door protrudes 1<sup>7</sup>/<sub>8</sub>" (4.8 cm) beyond 24" (61.0 cm) base cabinet.

## CABINET DIMENSIONS

Cabinet opening dimensions shown are for 25" (64.0 cm) countertop depth, 24" (61.0 cm) base cabinet depth, and 36" (91.4 cm) countertop height. Dimensions must be met in order to ensure a flush fit to back wall.

**IMPORTANT:** If installing a range hood or hood liner above the range, follow the range hood or hood liner installation instructions for dimensional clearances above the cooktop surface.



- A. 18" (45.7 cm) upper cabinet to countertop
- B. 30" (76.2 cm) model: 30" (76.2 cm) min. upper cabinet width  
36" (91.4 cm) model: 36" (91.4 cm) min. upper cabinet width  
48" (121.9 cm) model: 48" (121.9 cm) min. upper cabinet width
- C. 13" (33 cm) max. upper cabinet depth
- D. For minimum clearance to top of range\*\*
- E. 30<sup>1</sup>/<sub>4</sub>" (76.8 cm) on 30" (76.2 cm) models  
36<sup>1</sup>/<sub>4</sub>" (92.1 cm) on 36" (91.4 cm) models  
48<sup>1</sup>/<sub>4</sub>" (122.6 cm) on 48" (121.9 cm) models
- F. 6" (15.2 cm) min. clearance from both sides of range to side wall or other combustible material
- G. 15" (38.1 cm)
- H. 22" (55.9 cm) on 30" (76.2 cm) models  
28" (71.1 cm) on 36" (91.4 cm) models  
40" (101.6 cm) on 48" (121.9 cm) models
- I. 1<sup>1</sup>/<sub>2</sub>" (3.8 cm)
- J. 3" (7.6 cm)
- K. 5" (12.7 cm)
- L. 6" (15.2 cm) on 30" (76.2 cm) models  
14" (35.5 cm) on 36" (91.4 cm) models  
24" (61.0 cm) on 48" (121.9 cm) models
- M. 10<sup>1</sup>/<sub>2</sub>" (26.7 cm)
- N. 6" (15.2 cm)
- O. 6" (15.2 cm)\*\*\*

\* Receptacle must be rotated 90° for Canadian installation.

### \*\* Minimum Clearances

**30" (76.2 cm) models:** 30" (76.2 cm) minimum clearance between the top of the cooking platform and the bottom of an uncovered wood or metal cabinet

**36" (91.4 cm) models:** 42" (106.7 cm) minimum clearance between the top of the cooking platform and the bottom of an uncovered wood or metal cabinet

**48" (121.9 cm) models:** 42" (106.7 cm) minimum clearance between the top of the cooking platform and the bottom of an uncovered wood or metal cabinet

\*\*\*If the surface of the back wall is constructed of a combustible material and a backguard is not installed, a 6" (15.2 cm) minimum clearance is required for all models.