

GOLDPARK

WORTH MORE™

CONSTRUCTION SUMMARY

Lot: 138

Model: 38-8 Elev.B CORELLI OPT - GFA1

Project/Phase: Brampton Encore / 2

CONCRETE AND DRAIN

Invoice	Qty.	Description
2476 28,894 27Nov20 **	1	ROUGH-IN - 3PC BASEMENT ROUGH-IN  INCLUDED IN APS
2476  27Nov20 NoCat	1	ROUGH-IN - 3PC BASEMENT ROUGH-IN

DRYWALL

Invoice	Qty.	Description
2476  27Nov20 NoCat	8	MAIN FLOOR: EXTENDED HEIGHT ARCHWAY (PRICE PER DOORWAY) - 96"
2476  27Nov20 NoCat	5	MAIN FLOOR: STANDARD DOOR EXTENDED HEIGHT 96" (PRICE PER DOOR) MAIN FLOOR 3 STOREY MODELS - 96"
2476  27Nov20 NoCat	1	**REVISED LAYOUT** MAIN FLOOR: DELETE ARCHWAY (x2) AT LIBRARY. ADD DOUBLE FRENCH DOORS WITH CLEAR GLASS - OPENING APPROX CENTERED ALONG WALL OPPOSITE KITCHEN. SEE PLAN FOR LOCATION

ELECTRICAL

Invoice	Qty.	Description
2476 28,824 27Nov20	1	KITCHEN: ROUGH - IN WALL OUTLET ON SAME SWITCH - DOES NOT INCLUDE FIXTURE - LOCATE APPROX CENTER ABOVE ISLAND. USE SAME SWITCH AS STANDARD LIGHT
2476 28,811 27Nov20	1	200 AMP ELECTRICAL SERVICE
2476 28,810 27Nov20	1	KITCHEN: 220V WALL RECEPTICAL ON DEDICATED CIRCUIT- FOR 4 WIRE BUILT-IN WALL OVEN - SEE PLAN FOR LOCATION
2476 28,808 27Nov20	1	KITCHEN: 110V WALL RECEPTACLE ON DEDICATED CIRCUIT - GAS FIRED APPLIANCE - FOR AUX. EQUIPMENT - NOT A STOVE PLUG

EXTERIOR COLOURS

Invoice	Qty.	Description
2476  27Nov20 NoCat	1	EXTERIOR COLOUR PACKAGE # 9

DisciplineMS.rpt 26jun20

Page 1 of 7  
Printed and Sent: 27-Nov-20











CONSTRUCTION SUMMARY

Lot: 138

Model: 38-8 Elev.B CORELLI OPT - GFA1

Project/Phase: Brampton Encore / 2

WINDOWS - BASEMENT

Invoice	Qty.	Description
2476 28,916 27Nov20	3	BASEMENT WINDOWS - UPGRADE EXISTING BASEMENT WINDOW TO 30 INCH X 24 INCH - MAY REQUIRE INSTALLATION OF WINDOW WELL





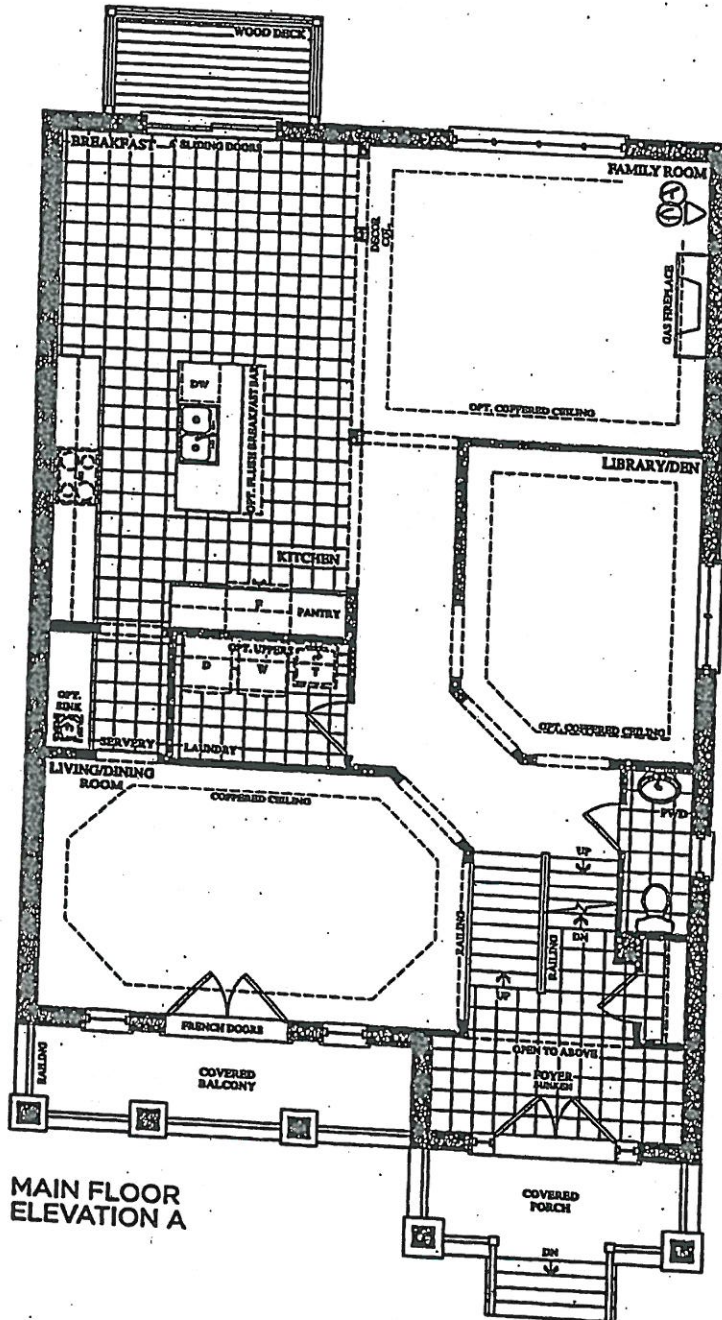
encore  
BRAMPTON

BE2-138  
DEC 8 2020

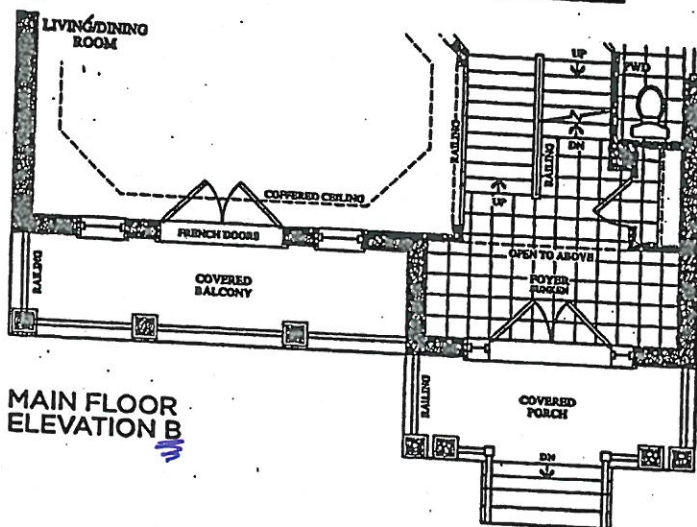
# The Corelli

## 38' SERIES

Elevation A • 3,878 sq.ft. | Elevation B • 3,878 sq.ft.



MAIN FLOOR  
ELEVATION A



MAIN FLOOR  
ELEVATION B

Prices, figures, illustrations, sizes, features and finishes are subject to change without notice. E&O.E. Areas and dimensions are approximate and actual usable floor space may vary from the stated area. Layout may be reverse of the unit purchased. E. & O.E.

GOLDPARK  
HOMES

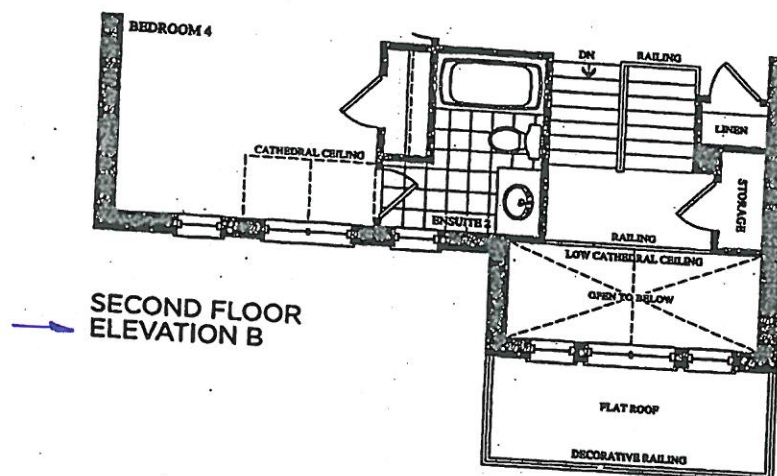
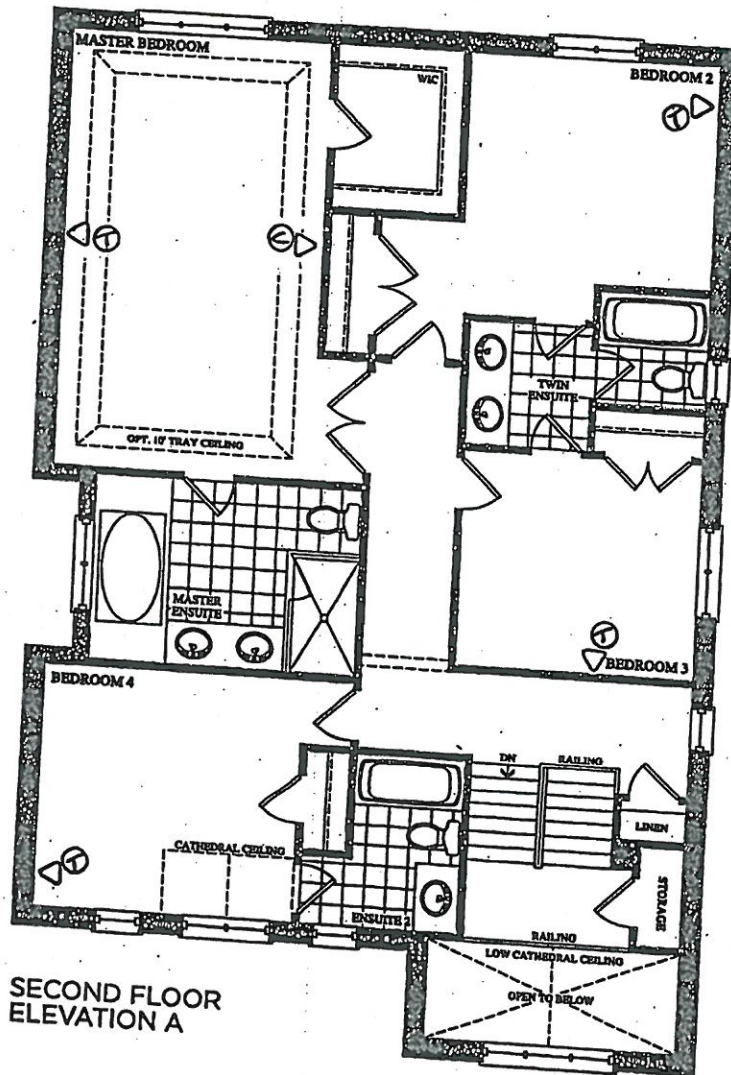


**encore**  
BRAMPTON

BE2-138  
Dec 8 220

The  
**Corelli**  
38' SERIES

Elevation A • 3,878 sq.ft. | Elevation B • 3,878 sq.ft.



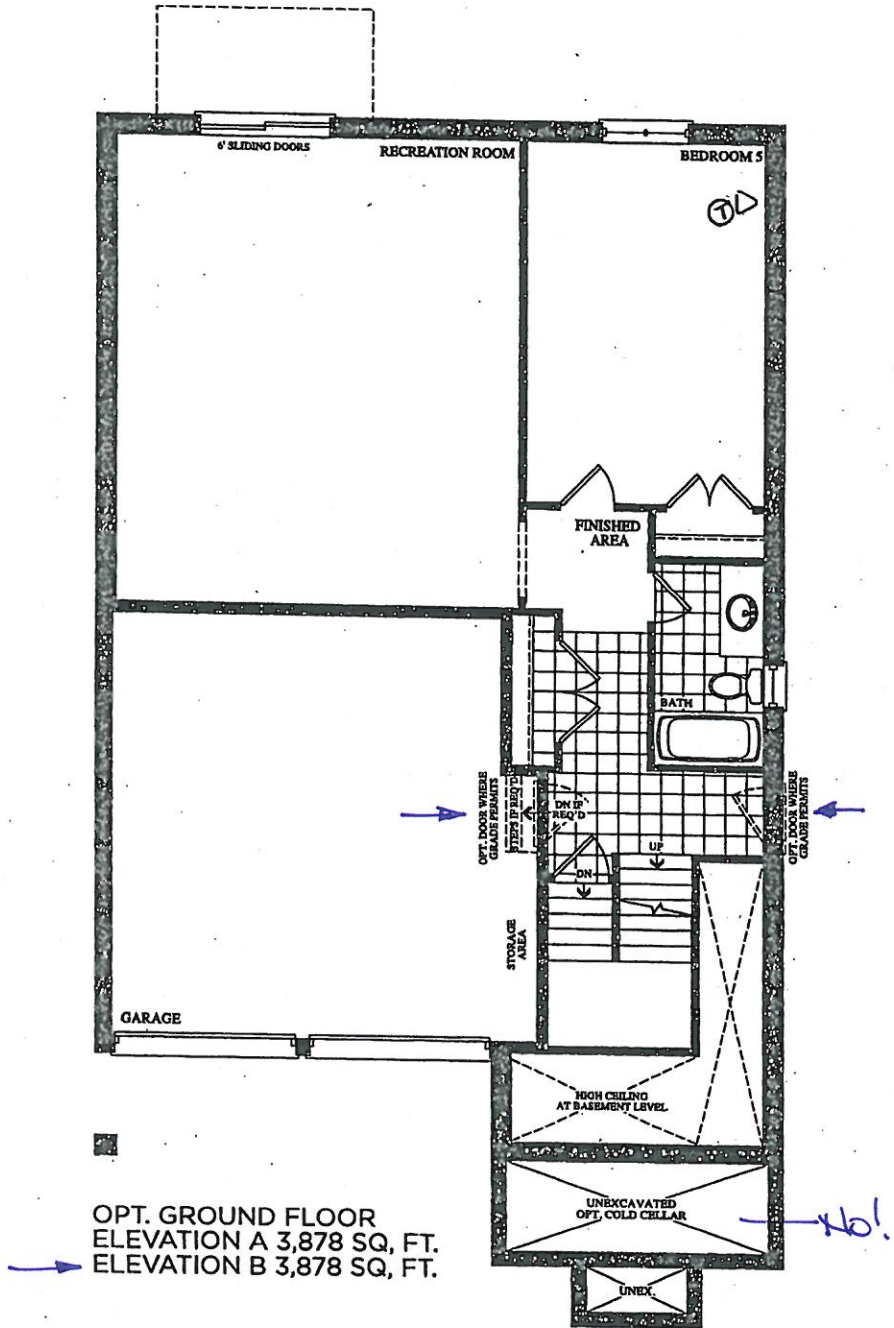
Prices, figures, illustrations, sizes, features and finishes are subject to change without notice. E.&O.E. Areas and dimensions are approximate and actual usable floor space may vary from the stated area. Layout may be reverse of the unit purchased. E. & O.E.

**GOLDPARK**  
HOMES

BEZ-138  
DEC 8 2020

The  
Corelli  
38' SERIES

Elevation A • 3,878 sq.ft. | Elevation B • 3,878 sq.ft.



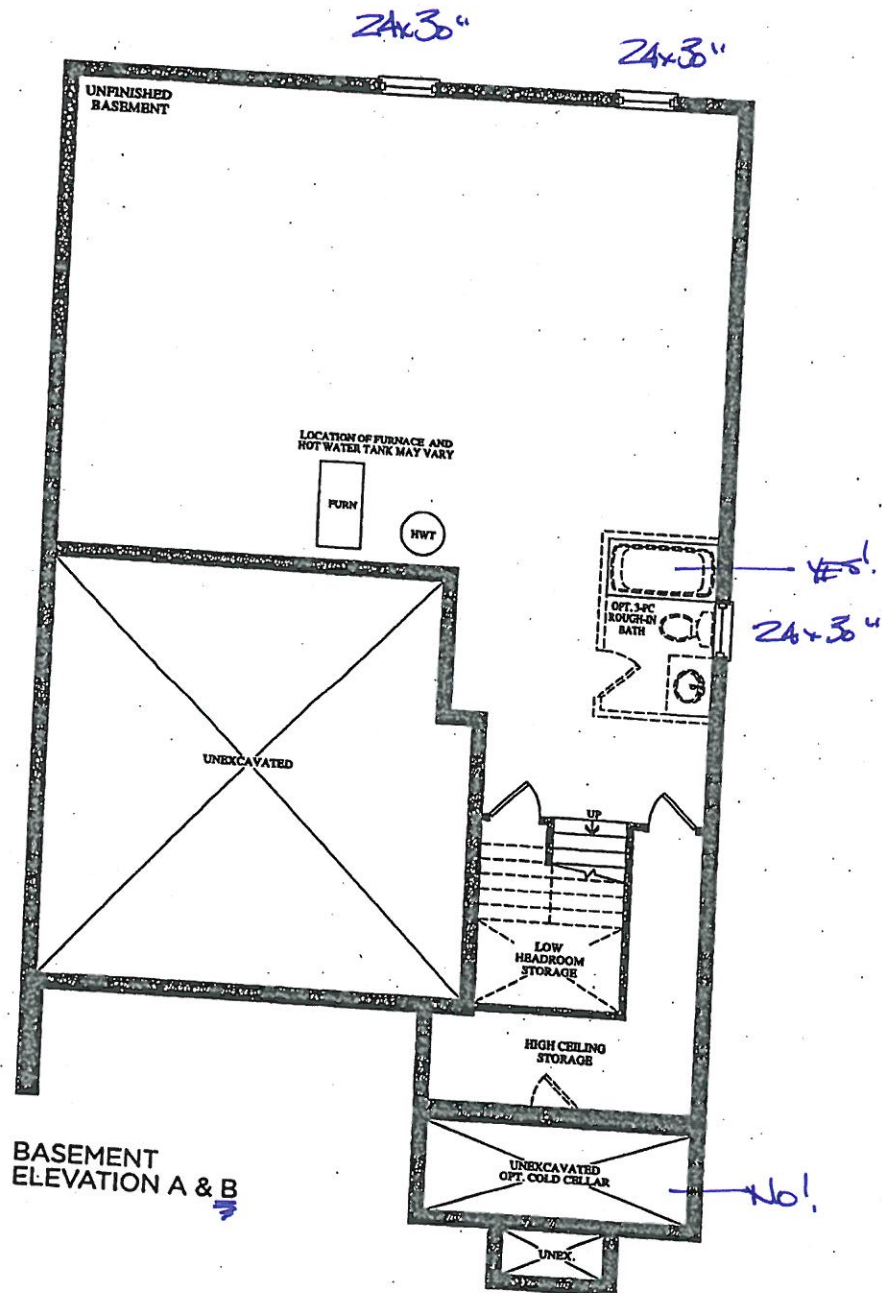
Prices, figures, illustrations, sizes, features and finishes are subject to change without notice, E.&O.E. Areas and dimensions are approximate and actual usable floor space may vary from the stated area. Layout may be reverse of the unit purchased. E. & O.E.

encore  
BRAMPTON

BE2-138  
DEC 8 2006

The  
Corelli  
38' SERIES

Elevation A • 3,878 sq.ft. | Elevation B • 3,878 sq.ft.



BASEMENT  
ELEVATION A & B

Prices, figures, illustrations, sizes, features and finishes are subject to change without notice. E.&O.E. Areas and dimensions are approximate and actual usable floor space may vary from the stated area. Layout may be reverse of the unit purchased. E. & O.E.

GOLDPARK  
HOMES