

GOLDPARK

WORTH MORE™

CONSTRUCTION SUMMARY

Lot: 114

Model: 42.03 B FORESTCREST

Project/Phase: Pine Valley Forevergreen / 1

APPLIANCES

Invoice	Qty.	Description
2475 72,217 21Oct20 **	1	KITCHEN - UPGRADE TO 8" DUCT ( EXTERIOR WALL) IN LIEU OF STANDARD OFFERING

DRYWALL

Invoice	Qty.	Description
2475  21Oct20 NoCat	1	**CUSTOM LAYOUT** DELETE LINEN CLOSET FROM HALL, CREATE OPEN CUBBY SPACE WITH 3 WIRE-SHELVES (no door) ACCESSIBLE FROM INSIDE BEDROOM

ELECTRICAL

Invoice	Qty.	Description
2475 72,273 21Oct20	1	KITCHEN: 110V WALL RECEPTACLE ON SEPARATE CIRCUIT - GAS FIRED APPLIANCE - FOR AUX. EQUIPMENT - NOT A STOVE PLUG - RANGE TOP
2475 72,272 21Oct20	1	KITCHEN; 110V WALL RECEPTACLE ON SEPARATE CIRCUIT - FOR MICROWAVE - MICROWAVE NOT INCLUDED
2475 72,665 21Oct20	1	KITCHEN: 240V WALL RECEPTACLE ON SEPARATE CIRCUIT FOR BUILT-IN OVEN. - APPROX. LOCATION AS PER ATTACHED DRAWINGS
2475 72,281 21Oct20	1	GREAT ROOM: INTERIOR WALL OUTLET: ADDITIONAL 110V WALL INTERIOR RECEPTACLE ON EXISTING CIRCUIT FOR WALL MOUNTED TV - LOCATE ABOVE FIREPLACE, APPROX 66" A.F.F.
2475 72,280 21Oct20	1	LIVING ROOM: CEILING OUTLET: ADDITIONAL REINFORCED CEILING OUTLET - SEE PLAN FOR LOCATION
2475 72,278 21Oct20	1	LIVING ROOM: ADDITIONAL INTERIOR SWITCH FOR CEILING LIGHT
2475 72,280 21Oct20	1	POWDER ROOM: CEILING OUTLET: ADDITIONAL REINFORCED CEILING OUTLET - SEE PLAN FOR LOCATION - USE SAME SWITCH AS STANDARD
2475 72,289 21Oct20	6	MAIN HALL: 4" E/S LED INTERIOR POT LIGHT - GROUND FLOOR - EACH - SEE PLAN FOR LOCATION  IN LIEU OF STANDARD CEILING LIGHTS, USE STANDARD SWITCH
2475 72,288 21Oct20	1	ENSUITE 3: RELOCATE STD VANITY LIGHT + ROUGH-IN FOR ADDITIONAL WALL SCONCE (1) CAPPED OUTLET ON EXISTING SWITCH - FIXTURE NOT INCLUDED - USE SAME SWITCH AS STANDARD  LOCATE APPROX 80" A.F.F - EITHER SIDE OF MIRROR - SEE PLAN FOR LOCATION

DisciplineMS.rpt 26jun20

Page 1 of 3  
Printed and Sent: 21-Oct-20

GOLDPARK

WORTH MORE™

CONSTRUCTION SUMMARY

Lot: 114

Model: 42.03 B FORESTCREST

Project/Phase: Pine Valley Forevergreen / 1

ELECTRICAL

Invoice	Qty.	Description
2475 72,288 21Oct20	1	ENSUITE 4: RELOCATE STD VANITY LIGHT + ROUGH-IN FOR ADDITIONAL WALL SCONCE (1) CAPPED OUTLET ON EXISTING SWITCH - FIXTURE NOT INCLUDED - USE SAME SWITCH AS STANDARD  LOCATE APPROX. 80" A.F.F. EITHER SIDE OF MIRROR - SEE PLAN FOR LOCATION
2475 72,288 21Oct20	2	MASTER ENSUITE: ROUGH-IN FOR ADDITIONAL WALL SCONCE (1) CAPPED OUTLET ON EXISTING SWITCH - FIXTURE NOT INCLUDED - USE SAME SWITCH AS STANDARD - LOCATE APPROX 80" A.F.F.
2475 72,291 21Oct20	1	FRONT EXTERIOR LED SOFFIT POT LIGHT - EACH SEE EXTERIOR DWG FOR LOCATION
2475 72,278 21Oct20	1	FOYER: ADDITIONAL INTERIOR SWITCH  FOR SOFFIT LIGHT

FRAMING

Invoice	Qty.	Description
2475  21Oct20 NoCat	1	**CUSTOM LAYOUT** DELETE LINEN CLOSET FROM HALL, CREATE OPEN CUBBY SPACE WITH 3 WIRE-SHELVES (no door) ACCESSIBLE FROM INSIDE BEDROOM

HVAC

Invoice	Qty.	Description
2475 72,224 21Oct20	1	KITCHEN: GAS LINE ROUGH-IN - MAIN FLOOR FOR APPLIANCE - SEE PLAN FOR LOCATION - RANGE TOP
2475 72,217 21Oct20	1	KITCHEN - UPGRADE TO 8" DUCT ( EXTERIOR WALL) IN LIEU OF STANDARD OFFERING
2475 72,249 21Oct20	1	STEAM HUMIDIFER - APRILAIRE 800 WHOLE HOUSE STEAM HUMIDIFIER (UP TO 6,200 SQ.FT.) - COMPLETE WITH HI VOLTAGE WIRING, 240V DOUBLE BREAKER 20 AMP, SHUT OFF VALVE
2475  21Oct20 ** NoCat	1	STEAM HUMIDIFER - APRILAIRE 800 WHOLE HOUSE STEAM HUMIDIFIER (UP TO 6,200 SQ.FT.) - COMPLETE WITH HI VOLTAGE WIRING, 240V DOUBLE BREAKER 20 AMP, SHUT OFF VALVE
2475  21Oct20 ** NoCat	1	STEAM HUMIDIFER - APRILAIRE 800 WHOLE HOUSE STEAM HUMIDIFIER (UP TO 6,200 SQ.FT.) - COMPLETE WITH HI VOLTAGE WIRING, 240V DOUBLE BREAKER 20 AMP, SHUT OFF VALVE

INTERIOR TRIM AND DOORS

Invoice	Qty.	Description
2475  21Oct20 NoCat	1	**CUSTOM LAYOUT** DELETE LINEN CLOSET FROM HALL, CREATE OPEN CUBBY SPACE WITH 3 WIRE-SHELVES (no door) ACCESSIBLE FROM INSIDE BEDROOM

DisciplineMS.rpt 26jun20

Page 2 of 3  
Printed and Sent: 21-Oct-20

**Lot: 114****Model: 42.03 B FORESTCREST****Project/Phase: Pine Valley Forevergreen / 1**

## KITCHEN AND BATH CABINETRY

Invoice	Qty.	Description
2475 72,217 21Oct20 **	1	KITCHEN - UPGRADE TO 8" DUCT ( EXTERIOR WALL) IN LIEU OF STANDARD OFFERING

# MASONRY

Invoice	Qty.	Description
2475	1	FRONT EXTERIOR LED SOFFIT POT LIGHT - EACH SEE EXTERIOR DWG FOR LOCATION
21Oct20 NoCat		

## NETWORK AND WIRING

Invoice	Qty.	Description
2475 72,259 21Oct20	1	GREAT ROOM: CONDUIT PIPE - FOR WALL MOUNT TV - LOCATE ABOVE FIREPLACE, APPROX 66" A.F.F. THRU BASEMENT, TERMINATE AT CABLE LOCATION - SEE PLAN
2475 72,258 21Oct20	3	GREAT ROOM / STUDY / BEDROOM 3: ADDITIONAL CAT6 ETHERNET OUTLET - EACH - SEE PLAN FOR LOCATION

## PAINT

Invoice	Qty.	Description
2475 21Oct20 NoCat	1	**CUSTOM LAYOUT** DELETE LINEN CLOSET FROM HALL, CREATE OPEN CUBBY SPACE WITH 3 WIRE-SHELVES (no door) ACCESSIBLE FROM INSIDE BEDROOM

## PLUMBING

Invoice	Qty.	Description
2475 72,332 21Oct20	1	KITCHEN: ROUGH-IN 1/4" COLD WATER LINE TO FRIDGE
2475 21Oct20 NoCat	2	ENSUITE 3 + ENSUITE 4: UPGRADE TO MOEN RIZON SHOWER SYSTEM WITH TOE TESTER - CHROME #2520 / T2813  TOE TESTER TO BE APPROX 24" A.F.F.
2475 21Oct20 NoCat	1	MASTER ENSUITE: UPGRADE TO MOEN 3-FUNCTION 'ALIGN' RAIN SHOWER (from ceiling) + HAND SHOWER WITH SLIDE BAR - CHROME #T21193EP/3372/128284/T4191/62320/3887EP/A725/116651

SCHEDULE 'F'



PV-114  
October 9, 2020

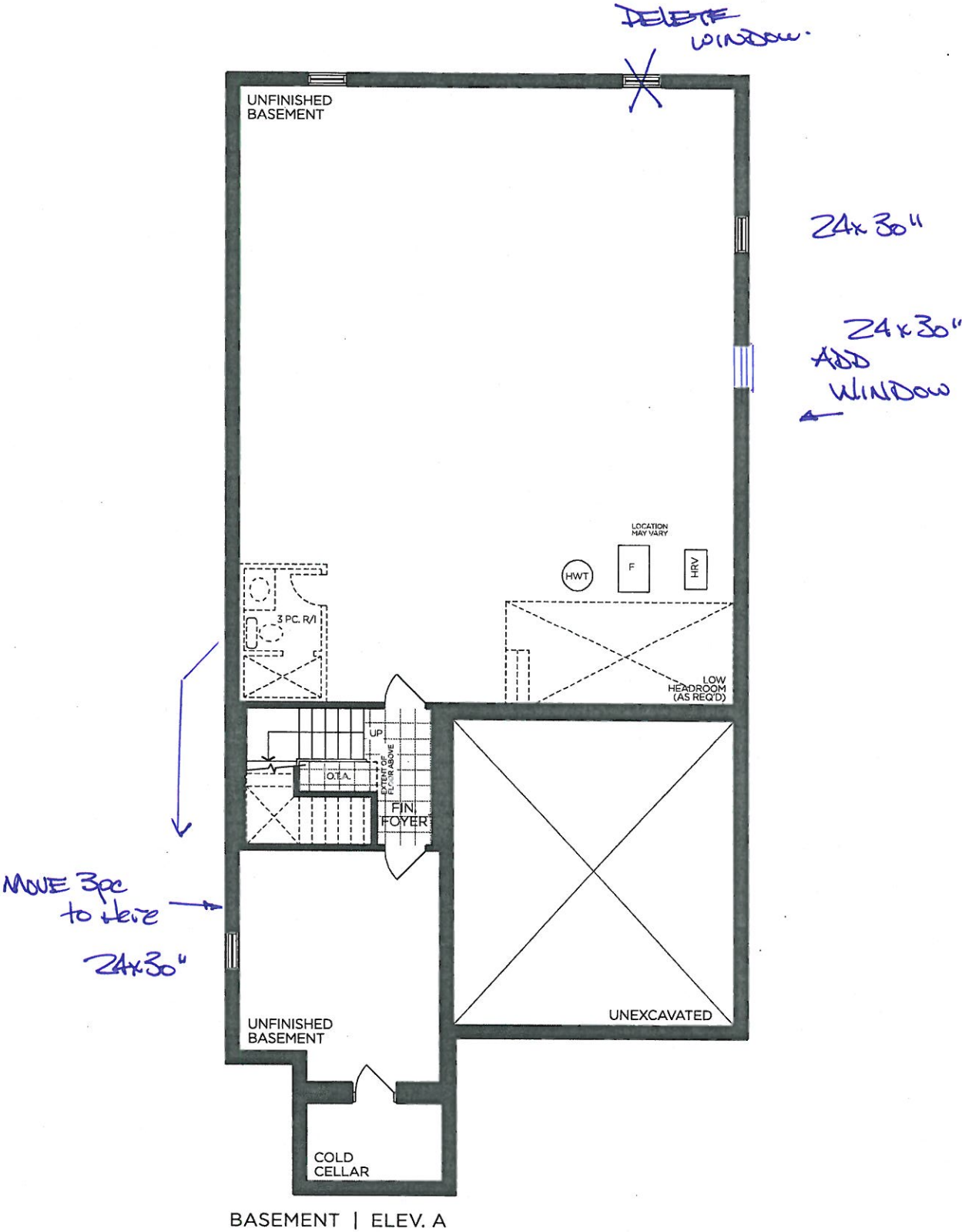


The  
Forestcrest  
42' SERIES

Elevation A • 3,800 sq.ft.

→ Elevation B • 3,785 sq.ft.

Elevation C • 3,800 sq.ft.



BASEMENT | ELEV. A

VENDOR

PURCHASER

PURCHASER

GOLDPARK  
WORTH MORE™

Prices, figures, illustrations, sizes, features and finishes are subject to change without notice. Areas and dimensions are approximate and actual usable floor space may vary from the stated area. Layout may be reverse of the unit purchased. E. & O.E. 4203

SCHEDULE 'F'



PV-114  
October 9, 2020.



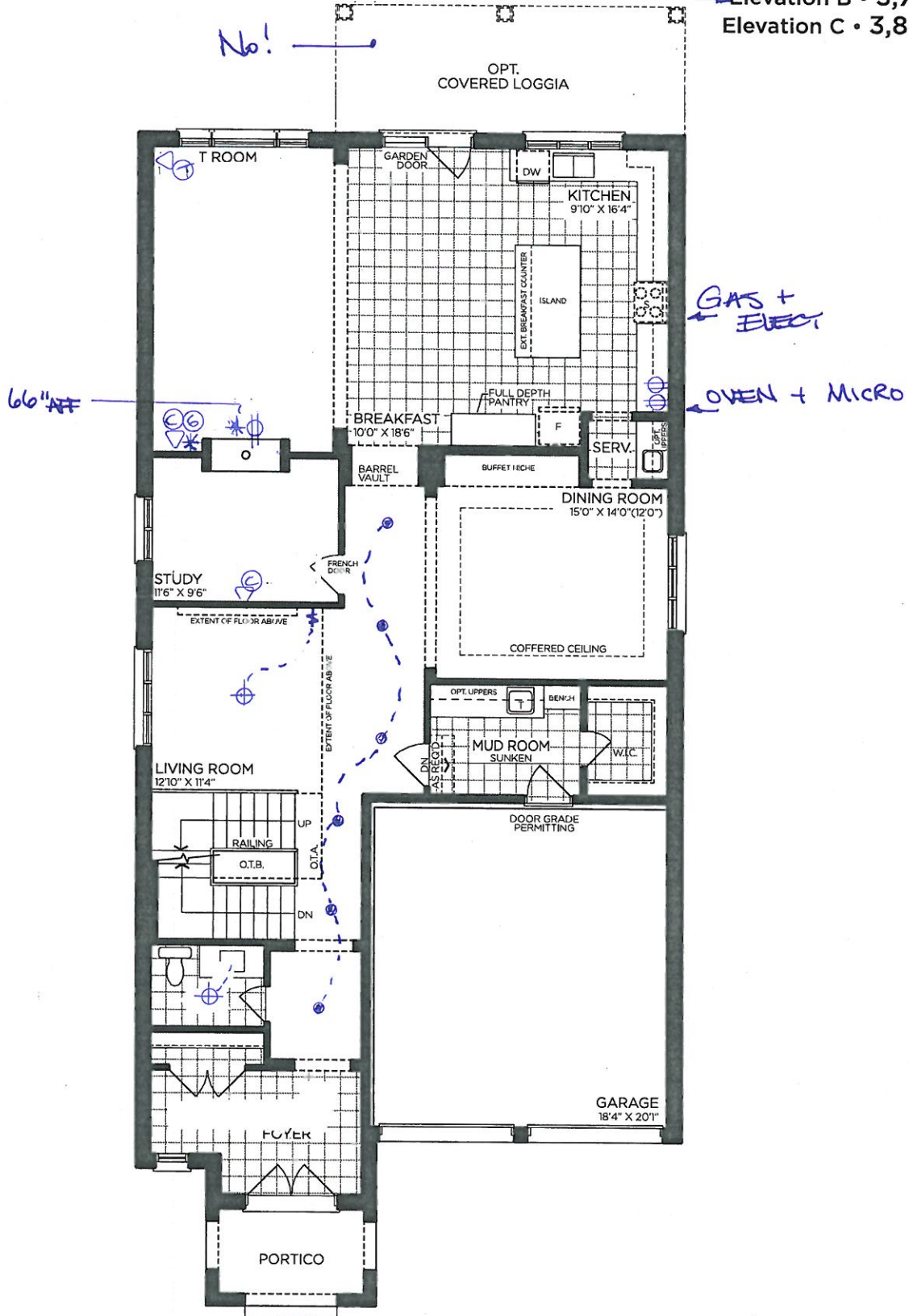
# The Forestcrest

## 42' SERIES

Elevation A • 3,800 sq.ft.

→ Elevation B • 3,785 sq.ft.

Elevation C • 3,800 sq.ft.



GROUND FLOOR | ELEV. A

VENDOR	<input type="text"/>
PURCHASER	<input type="text"/>
PURCHASER	<input type="text"/>

**GOLDPARK**  
WORTH MORE™

Prices, figures, illustrations, sizes, features and finishes are subject to change without notice. Areas and dimensions are approximate and actual usable floor space may vary from the stated area. Layout may be reverse of the unit purchased. E. & O.E. 4203



SCHEDULE 'F'

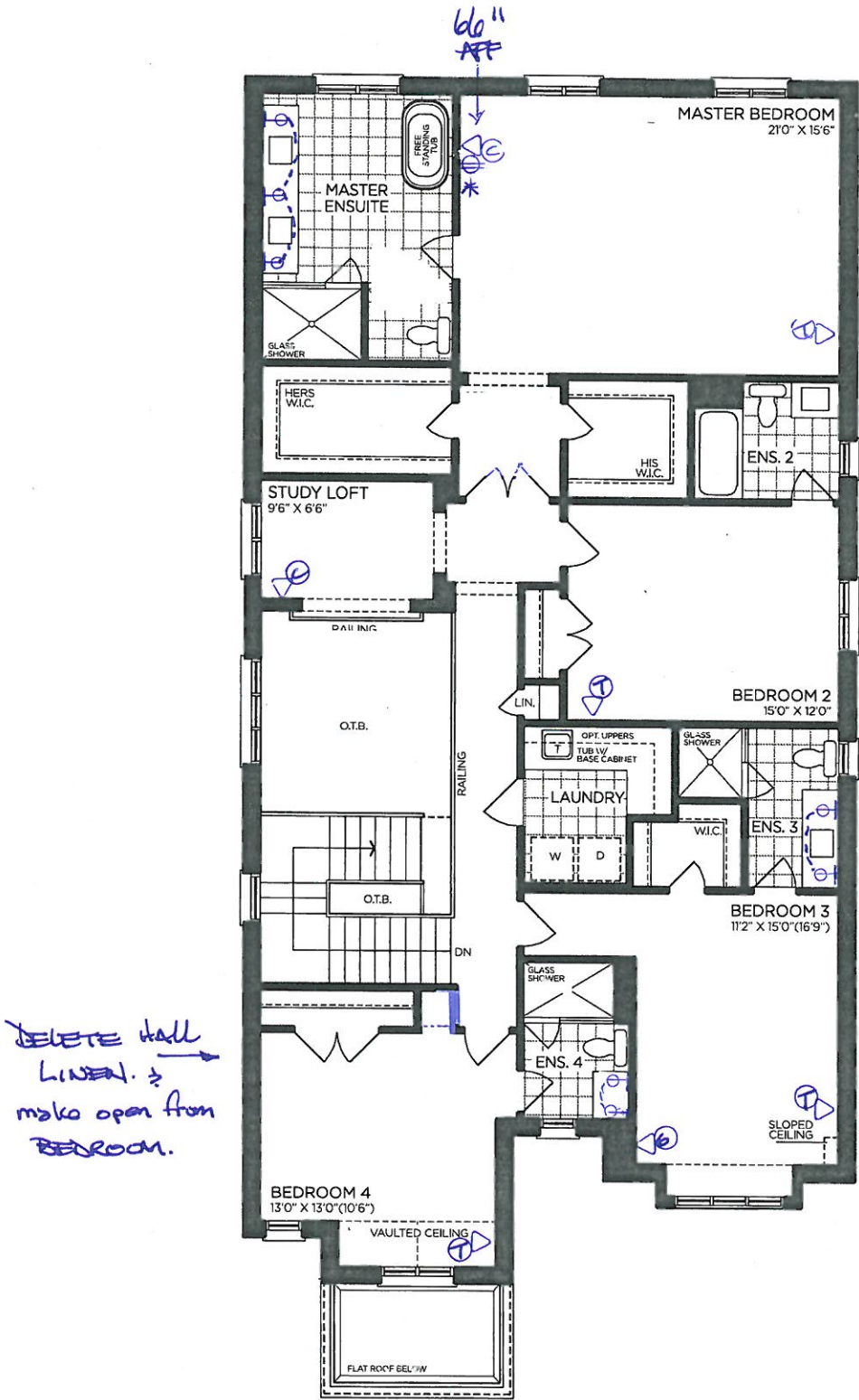


PV-114  
October 9, 2020.



The  
Forestcrest  
42' SERIES

Elevation A • 3,800 sq.ft.  
→ Elevation B • 3,785 sq.ft.  
Elevation C • 3,800 sq.ft.



SECOND FLOOR | ELEV. A

VENDOR

PURCHASER

PURCHASER

GOLDPARK  
WORTH MORE™

Prices, figures, illustrations, sizes, features and finishes are subject to change without notice. Areas and dimensions are approximate and actual usable floor space may vary from the stated area. Layout may be reverse of the unit purchased. E. & O.E. 4203

SCHEDULE 'F'



PV-1114  
October 9, 2020



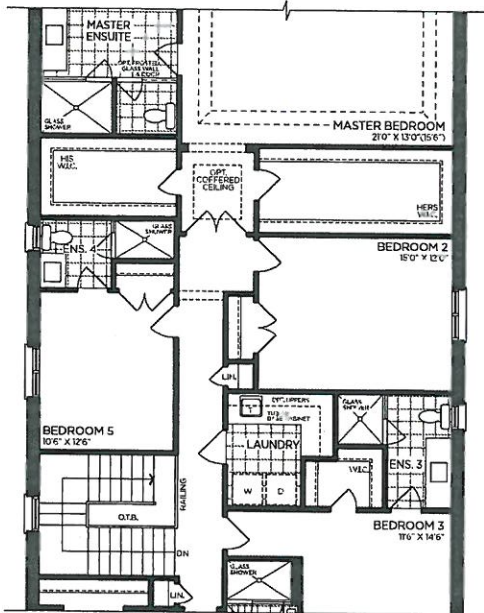
# The Forestcrest

## 42' SERIES

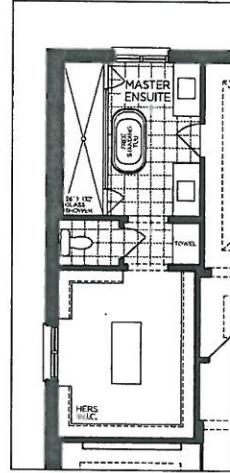
Elevation A • 3,800 sq.ft.

→ Elevation B • 3,785 sq.ft.

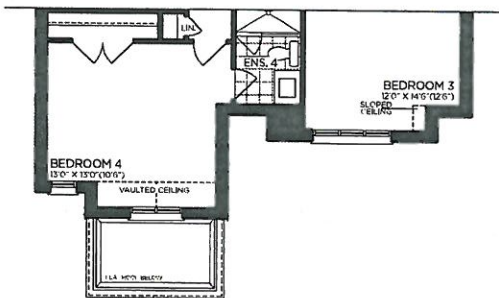
Elevation C • 3,800 sq.ft.



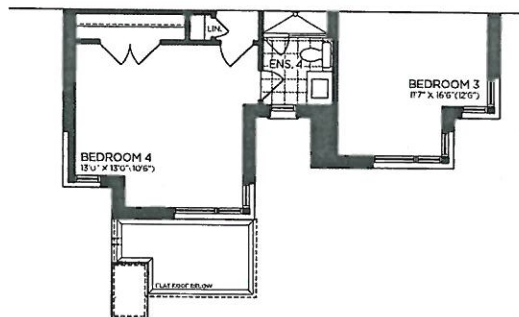
OPT. PART. SECOND FLOOR | ELEV. A  
5 BEDROOM



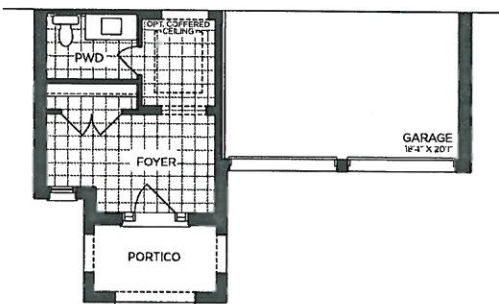
OPT. PART. SECOND FLOOR  
MASTER ENSUITE



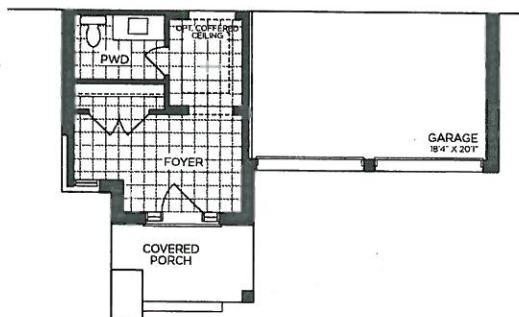
→ PART. SECOND FLOOR | ELEV. B



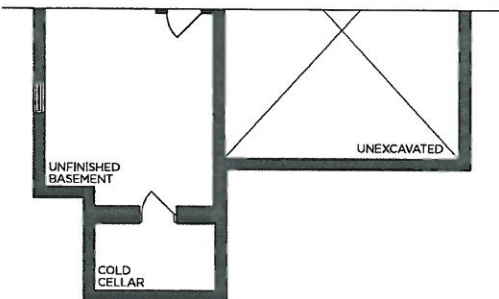
PART. SECOND FLOOR | ELEV. C



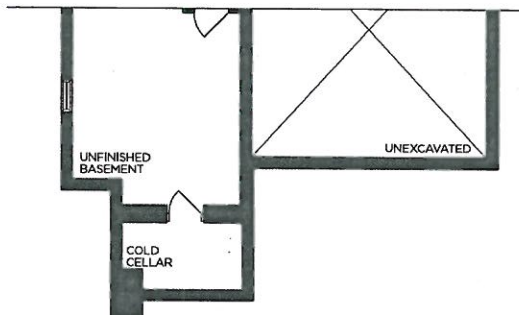
→ PART. GROUND FLOOR | ELEV. B



PART. GROUND FLOOR | ELEV. C



→ PART. BASEMENT | ELEV. B



PART. BASEMENT | ELEV. C

VENDOR   
PURCHASER   
PURCHASER

**GOLDPARK**  
WORTH MORE™

Prices, figures, illustrations, sizes, features and finishes are subject to change without notice. Areas and dimensions are approximate and actual usable floor space may vary from the stated area. Layout may be reverse of the unit purchased. E. & O.E. 4203





PINE VALLEY  
FOREVERGREEN



Lot#

PV-114

Room: Exterior Soffit

Signature:

Date:

October 9, 2020.

Signature:

GOLDPARK  
WORTH MORE™



PLUMBING UPGRADE

Moen - RIZON

Posi-Temp Tub/Shower





← LOCATE APPROX  
24" A.F.F.

- ☒ CHROME
- ☐ BRUSHED NICKEL (BN)
- ☐ MATTE BLACK (BL)

SHOWER FROM WALL\*

MODEL T2813 (BN, BL) Tub+Shower Trim / 2520 1/2" CC Valve

LOT # PV-114	ROOM: ENSUITE 3 + 4	DATE: October 9, 2020.
SIGNATURE: 		
SIGNATURE: 		



PINE VALLEY  
FOREVERGREEN

## PLUMBING UPGRADES

### POSI-TEMP TUB/SHOWER FAUCET WITH 3 FUNCTION TRANSFER VALVE/TRIM AND SLIDE BAR WITH HAND SHOWER

MOEN - ALIGN



← LOCATE  
APPROX 24"  
AFF.



☒ CHROME

☐ BRUSHED NICKEL

☐ MATTE BLACK

☐ from WALL

☒ from CEILING  
Ceiling Shower Arm:

→ Chrome (116651)  
Matte Black (116651WR)

MODEL T21193EP / 3372 / 128284 / T4191 / 62320 / 3887EP / A725

Lot#

PV-114

Room:

Master Ensuite

Signature:

Date:

October 9, 2020.

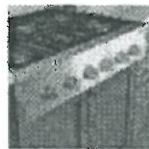
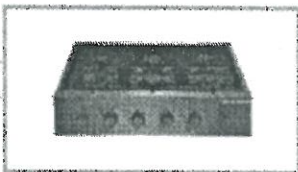
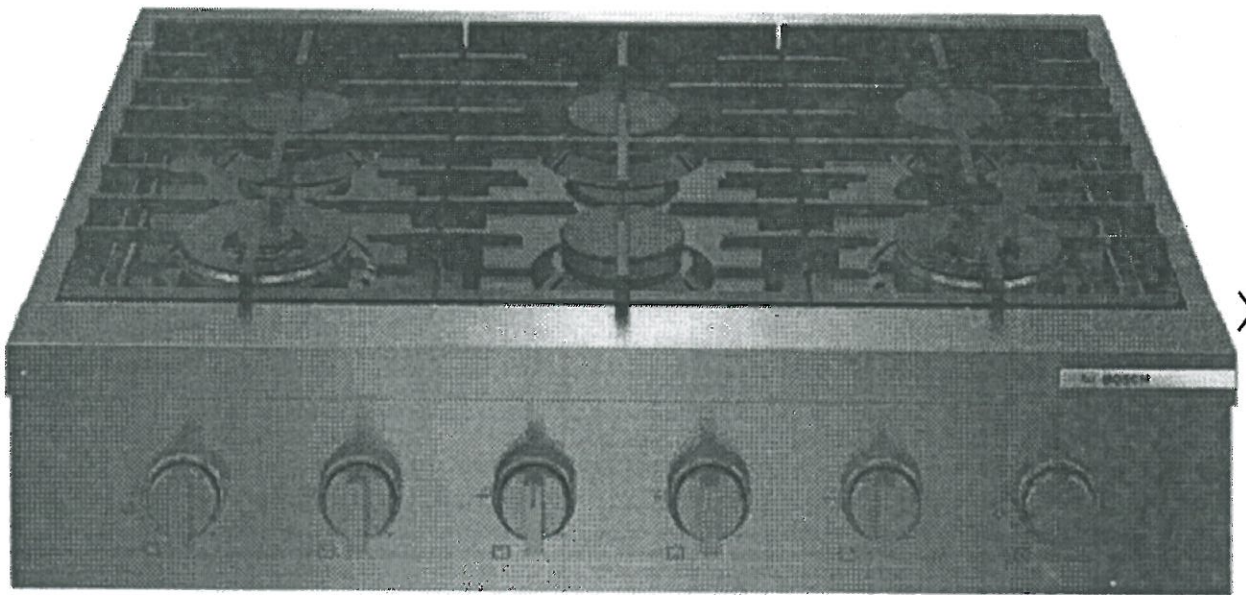
Signature:

GOLDPARK  
WORTH MORE



PV-114  
Oct. 9. 2020

800 Series Professional Rangetop  
36" Stainless steel  
**RGM8658UC**



☆☆☆☆☆ 0.0

0 Reviews





PR-114 Oct. 9. 2020.

## Dimensions

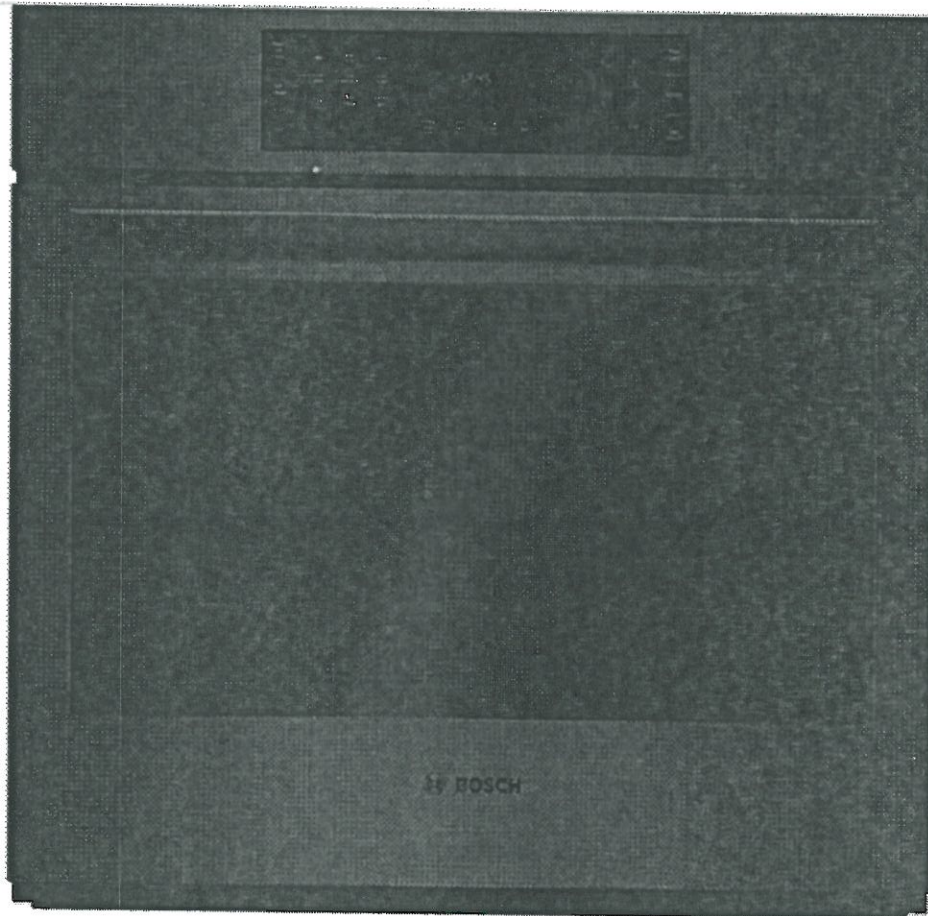


Class Width	36"
Width	35.94 inch(es) / 91.28 cm
Height	7.5 inch(es) / 19.05 cm
Depth	26.62 inch(es) / 67.62 cm
Additional Dimensions	Required Cutout Size (HxWxD): 7 3/8" x 36" x 24"
Weight	34.5 lb(s) / 15.65 kg



800 Series Single Wall Oven  
30" Black stainless steel  
**HBL8443UC**

PV-114 Oct. 9. 2020



The information on this page is for informational purposes only. It is not intended to be used as a substitute for the actual product or its specifications. Always consult the actual product or its specifications for the most current information.



★★★★★ 4.7

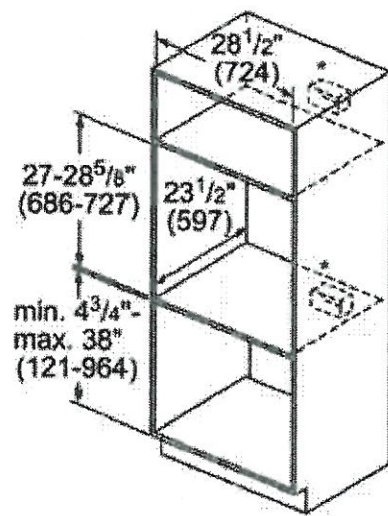
11 Reviews





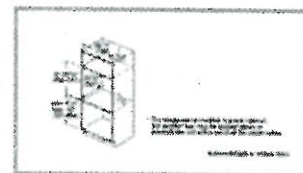
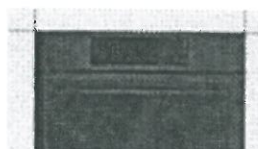
800 Series Single Wall Oven  
30" Black stainless steel  
**HBL8443UC**

PR-114 Oct. 9. 2020



\* For single ovens installed in a wall cabinet, the junction box may be located above or beneath the unit within reach of the power cable.

measurements in inches (mm)



★★★★★ 4.7

11 Reviews





PV-114 Oct. 9. 2020.



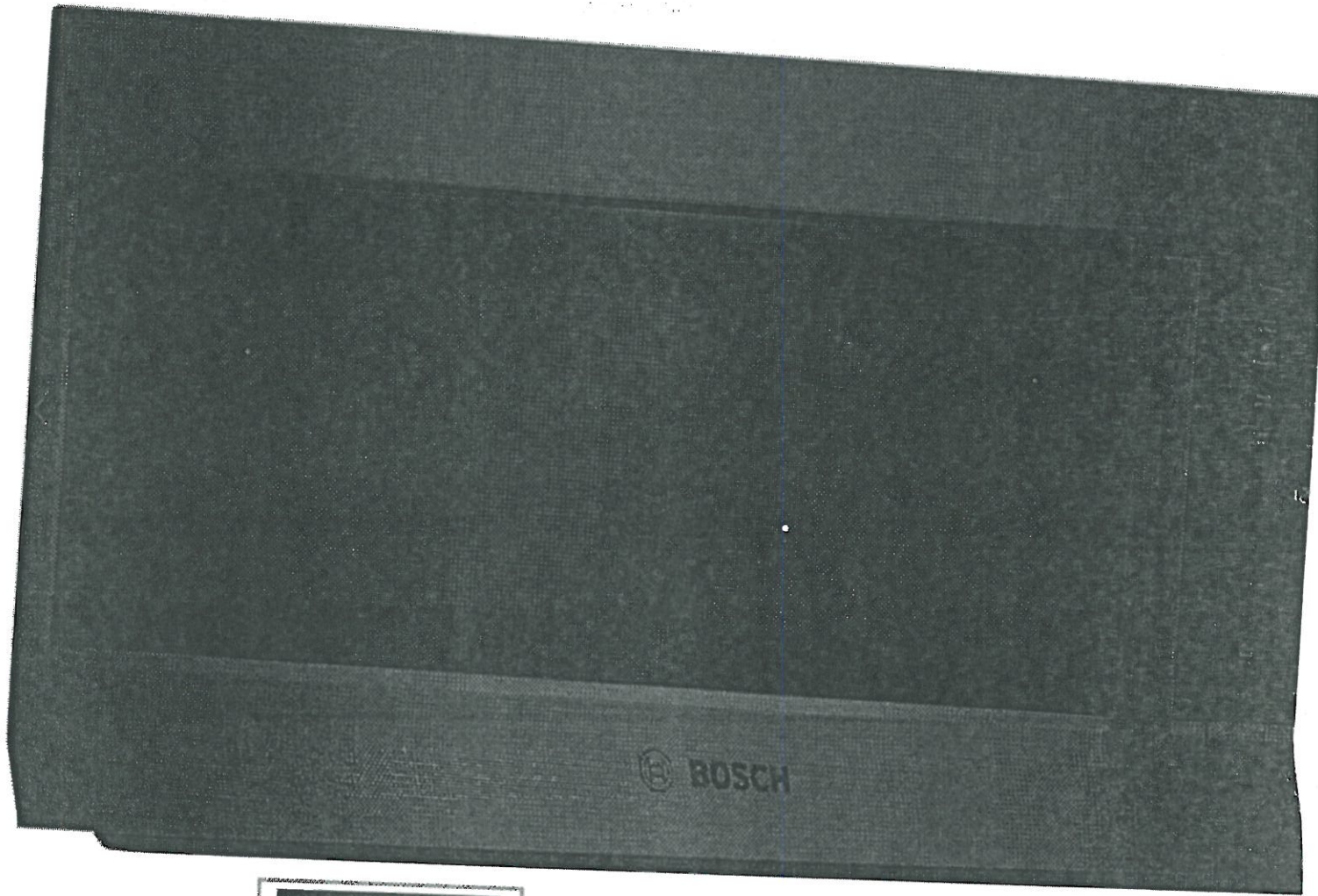
## Dimensions

Class Width	30"
Width	29.75 inch(es) / 75.57 cm
Height	29 inch(es) / 73.66 cm
Depth	24.5 inch(es) / 62.23 cm
Additional Dimensions	Required cutout size (HxWxD): 27" - 28 5/8" x 28 1/2" x 23 1/2"
Weight	149.01 lb(s) / 67.59 kg



800 Series Built-In Microwave Oven  
Black stainless steel  
HMV8044C

PV-114 Oct. 9. 2020.



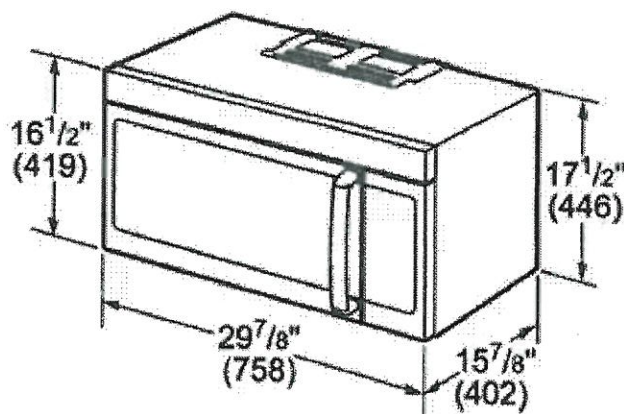
★★★★☆ 3.7  
3 Reviews

**\$ 1,129.00**

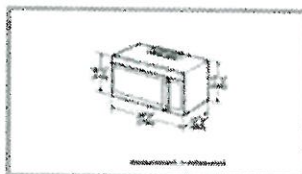


800 Series Built-In Microwave Oven  
Black stainless steel  
**HMV8044C**

PV-114 Oct. 9. 2020



measurements in inches (mm)



★★★★☆ 3.7

3 Reviews





## Dimensions

446 x 758 x 402 mm

Overall appliance  
dimensions (HxWxD)  
(in)

17 1/2" x 29 7/8" x 15 7/8"

PV-114 Oct. 9. 2020

Required cutout size  
(HxWxD) (mm)

762-762 x 762-762 x 305 mm

## Compare products

Cavity dimensions (in)

8 15/16 x 20 1/4 x 14 7/16

Net weight (kg)

33.067 kg

Net weight (lbs)

73.000 lbs

Turntable diameter  
(mm)

360 mm

Turntable diameter (in)

14 3/16"

## Construction type

+

Cavity material

Stainless steel

Construction type

Built-in

Type of control

Electronic

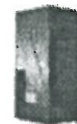
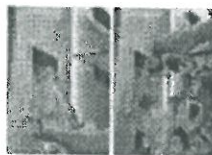
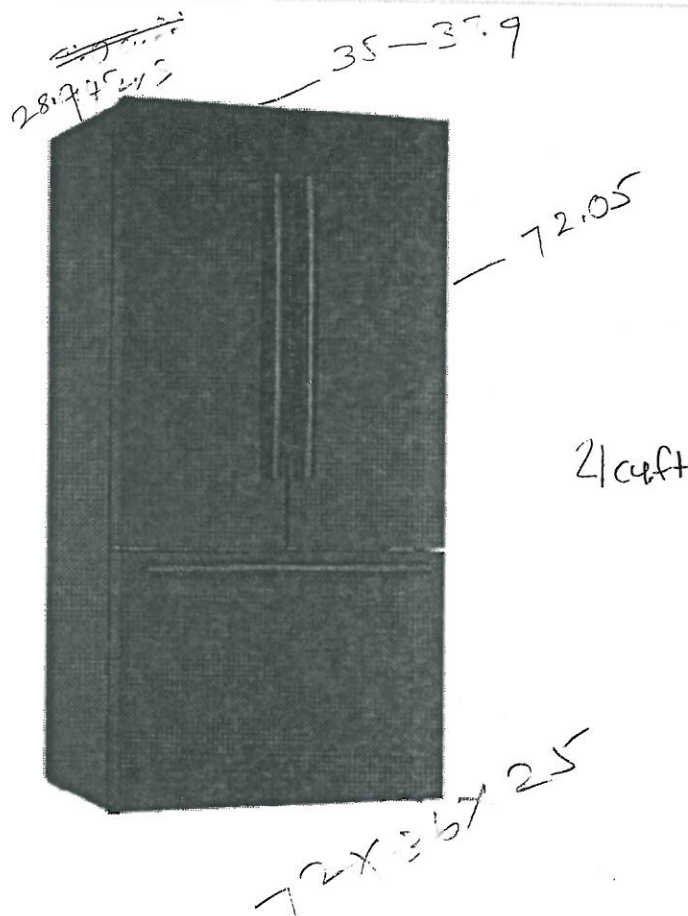
Door opening

Handle



800 Series French Door Bottom Mount

36" Black stainless steel

**B36CT80SNB**72x36x25  
PV-114 Oct. 9 2020.

★★★★☆ 4.5

320 Reviews

PV-114 Oct. 9. 2020

## Dimensions



Class Width	35" to 37.9"
Width	35.63 inch(es) / 90.5 cm
Height (With Hinge)	72.05 inch(es) / 183.0 cm
Depth (Without Handles)	28.94 inch(es) / 73.5 cm
Depth (With Handles)	30.91 inch(es) / 78.5 cm
Additional Dimensions	<ul style="list-style-type: none"><li>• Appliance Dimensions with Hinges, Handles and Doors (H x W x D): 72" x 35 5/8" x 30 29/32"</li><li>• Appliance Dimensions without Hinges and Doors (H X W X D): 71 1/2" X 35 5/8" X 24"</li><li>• Required Cutout Size (H X W X D): 72" X 36" X 25"</li></ul>
Weight	350.01 lb(s) / 158.76 kg

UPC.



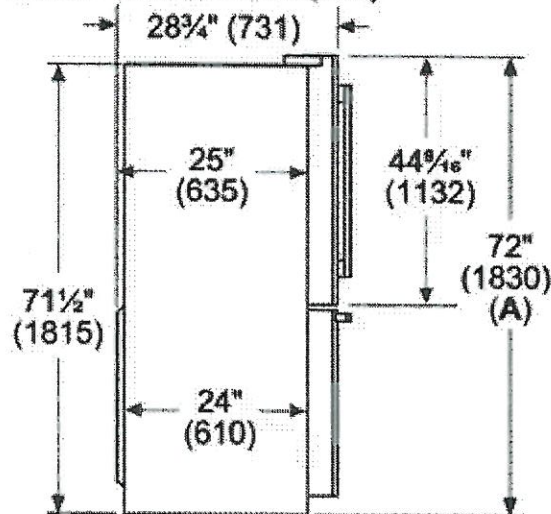


800 Series French Door Bottom Mount  
36" Black stainless steel  
**B36CT80SNB**

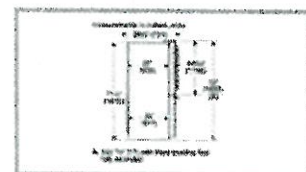
7V-114 Oct. 9. 2020.



measurements in inches (mm)



A: Add  $\frac{5}{8}$ " (17) with front levelling feet fully extended



★★★★☆ 4.5

320 Reviews





PV-114 Oct 9, 2020.

SN

## 24-inch Built-In Dishwasher with EasyGlide™ System (SHPM78Z54N)

 **BOSCH**

## Specifications

## General

Series Name	800 Series
Type	Built-In
Color	Black Stainless
Manufacturer Color	Black Stainless
Place Settings	16
Silence Rating	40 dB

## Cycle Information

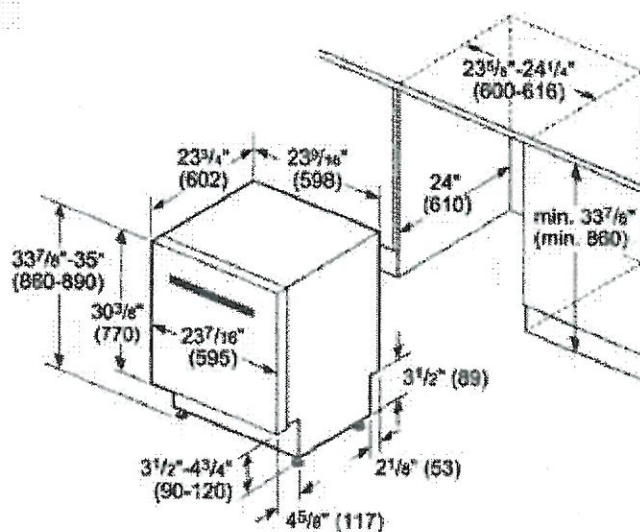
Number of Cycles	6
------------------	---


**BOSCH**

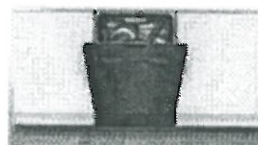
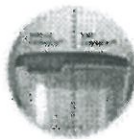
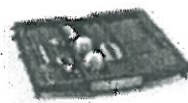
Invented for life

# 800 Series Dishwasher 24" Black Stainless Steel SHPM78Z54N

PV-114 Oct. 9. 2020



measurements in inches (mm)



★ ★ ★ ★ ★ 4.7

214 Reviews



## Dimensions

7V-114  
Oct. 9. 2020.

Class Width	24"
Width	23.54 inch(es) / 59.8 cm
Height (Min.)	33.86 inch(es) / 86.0 cm
Depth (Without Handle)	23.75 inch(es) / 60.33 cm
Additional Dimensions	Required Cutout Size (HxWxD): 33 7/8" x 23 5/8" x 24"



## General

PY-114 Oct. 9. 2020.

## Accessories



## Optional

- Junction Box: SMZPCJB1UC
- Bosch Dishwasher Water Supply Hose: SMZSH002UC
- Drain Hose Extension Kit: SGZ1010UC
- Dishwasher Accessory Kit: SMZ5000
- Anti-Tarnish Silverware Cassette: SMZ5002UC
- Edge Protector: SMZEP001UC

## Dimensions

Class Width	24"
Width	23.54 inch(es) / 59.8 cm
Height (Min.)	33.86 inch(es) / 86.0 cm
Depth (Without Handle)	23.75 inch(es) / 60.33 cm
Additional Dimensions	Required Cutout Size (HxWxD): 33 7/8" x 23 5/8" x 24"
Weight	116.01 lb(s) / 52.62 kg

## Warranty

Warranty	Limited 1 Year Parts and Labor
----------	--------------------------------

## UPC

UPC#	825225958635
------	--------------