



CONSTRUCTION SUMMARY

Lot: 117
Model: 40.06 A LILAC
Project/Phase: Pine Valley Forevergreen / 1

APPLIANCES

Invoice	Qty.	Description
2303 30Sep20 NoCat	1	APPLIANCE SPECIFICATIONS ATTACHED - SIGNED

CROWN MOULDING

Invoice	Qty.	Description
2303 30Sep20 NoCat	1	GREAT ROOM - OPT. COFFERED CEILING AS PER PLAN.
2303 30Sep20 NoCat	1	LIBRARY - OPT. LIBRARY COFFERED CEILING AS PER PLAN.

DRYWALL

Invoice	Qty.	Description
2303 30Sep20 NoCat	1	GREAT ROOM - OPT. COFFERED CEILING AS PER PLAN.
2303 30Sep20 NoCat	1	.GREAT ROOM - OPT. WAFFLE CEILING, BEAM DETAIL AS PER PLAN (9 BOXES) OPTION # 1 CTR-B07
2303 30Sep20 NoCat	1	.LIBRARY - OPT. WAFFLE CEILING, BEAM DETAIL AS PER PLAN (4 BOXES) OPTION #1 CTR-B07
2303 30Sep20 NoCat	18	.2ND FLOOR THRU OUT: INCREASE HEIGHT OF DOOR TO 8FT SECOND FLOOR - PER DOOR
2303 30Sep20 NoCat	1	LIBRARY - OPT. LIBRARY COFFERED CEILING AS PER PLAN.
2303 30Sep20 NoCat	5	MAIN FLOOR: 9' DOORS ON MAIN FLOOR (EXCLUDING MUDROOM AND MUDROOM WIC)
2303 30Sep20 NoCat	1	.MASTER BEDROOM - OPT. 10 FOOT TRAY CEILING AS PER PLAN **SQUARE OFF - LIKE ELEVATION C**
2303 30Sep20 NoCat	1	.DRESSING ROOM: SUN TUNNEL EXTENSION, 6 FOOT RIGID TUNNEL EXTENSION [2TR 6 FOOT] - UP TO 6 FOOT MAX.



CONSTRUCTION SUMMARY

Lot: 117
Model: 40.06 A LILAC
Project/Phase: Pine Valley Forevergreen / 1

ELECTRICAL

Invoice	Qty.	Description
2303 72,665 30Sep20	1	KITCHEN: 240v WALL RECEPTACLE ON SEPARATE CIRCUIT FOR BUILT-INS. - APPROX. LOCATION AS PER ATTACHED DRAWINGS.
2303 72,273 30Sep20	1	KITCHEN: 110V WALL RECEPTACLE ON SEPARATE CIRCUIT - GAS FIRED APPLIANCE - FOR AUX. EQUIPMENT - NOT A STOVE PLUG.
2303 72,667 30Sep20	2	KTICHEN: ROUGH-IN FOR CAPPED CEILING OUTLET (FUTURE LIGHT FIXTURE) - EACH. APPROX CENTERED ABOVE ISLAND
2303 72,278 30Sep20	1	KITCHEN: ADDITIONAL INTERIOR SWITCH. FOR ISLAND LIGHTS
2303 72,289 30Sep20	6	.KITCHEN: 4" E/S LED INTERIOR POT LIGHT - GROUND FLOOR - EACH, COMPLETE WITH SWITCH INCLUDED IN APS
2303 72,289 30Sep20	8	.GREAT ROOM: 4" E/S LED INTERIOR POT LIGHT - GROUND FLOOR - EACH
2303 72,278 30Sep20	1	.GREAT ROOM: ADDITIONAL INTERIOR SWITCH FOR POTLIGHTS
2303 72,309 30Sep20	1	.LIBRARY: UPGRADE STANDARD CEILING MOUNT FIXTURE TO (1) LED POT LIGHT - GROUND FLOOR - MUST SPECIFY LOCATION (CAN BE RELOCATED)
2303 72,289 30Sep20	3	.LIBRARY: 4" E/S LED INTERIOR POT LIGHT - GROUND FLOOR - EACH
2303 72,278 30Sep20	1	LIBRARY: ADDITIONAL INTERIOR SWITCH FOR POTLIGHTS
2303 72,281 30Sep20	1	.GREAT ROOM: INTERIOR WALL OUTLET: ADDITIONAL 110V WALL INTERIOR RECEPTACLE ON EXISTING CIRCUIT FOR WALL MOUNTED TV - LOCATE APPROX. 66" A.F.F. ABOVE FIREPLACE

EXTERIOR COLOURS

Invoice	Qty.	Description
2303 30Sep20 NoCat	1	EXTERIOR COLOUR PKG # BR.1



CONSTRUCTION SUMMARY

Lot: 117
Model: 40.06 A LILAC
Project/Phase: Pine Valley Forevergreen / 1

FRAMING

Invoice	Qty.	Description
2303 72,438 30Sep20	1	GREAT ROOM - OPT. COFFERED CEILING AS PER PLAN.
2303 72,437 30Sep20	1	.GREAT ROOM - OPT. WAFFLE CEILING, BEAM DETAIL AS PER PLAN (9 BOXES) OPTION # 1 CTR-B07
2303 72,435 30Sep20	1	LIBRARY - OPT. LIBRARY COFFERED CEILING AS PER PLAN.
2303 72,434 30Sep20	1	.LIBRARY - OPT. WAFFLE CEILING, BEAM DETAIL AS PER PLAN (4 BOXES) OPTION #1 CTR-B07
2303 30Sep20 NoCat	5	MAIN FLOOR: 9' DOORS ON MAIN FLOOR (EXCLUDING MUDROOM AND MUDROOM WIC)
2303 72,439 30Sep20	1	.MASTER BEDROOM - OPT. 10 FOOT TRAY CEILING AS PER PLAN **SQUARE OFF - LIKE ELEVATION C**
2303 72,637 30Sep20	1	.DRESSING ROOM: SUN TUNNEL EXTENSION, 6 FOOT RIGID TUNNEL EXTENSION [2TR 6 FOOT] - UP TO 6 FOOT MAX.
2303 30Sep20 NoCat	18	.2ND FLOOR THRU OUT: INCREASE HEIGHT OF DOOR TO 8FT SECOND FLOOR - PER DOOR

HVAC

Invoice	Qty.	Description
2303 72,224 30Sep20	1	KITCHEN: GAS LINE ROUGH-IN - MAIN FLOOR FOR APPLIANCE - MUST SPECIFY APPROX. LOCATION



CONSTRUCTION SUMMARY

Lot: 117
Model: 40.06 A LILAC
Project/Phase: Pine Valley Forevergreen / 1

INTERIOR TRIM AND DOORS

Invoice	Qty.	Description
2303 72,644 30Sep20	18	.2ND FLOOR THRU OUT: INCREASE HEIGHT OF DOOR TO 8FT SECOND FLOOR - PER DOOR
2303 30Sep20 NoCat	1	GREAT ROOM - OPT. COFFERED CEILING AS PER PLAN.
2303 30Sep20 NoCat	1	.GREAT ROOM - OPT. WAFFLE CEILING, BEAM DETAIL AS PER PLAN (9 BOXES) OPTION # 1 CTR-B07
2303 30Sep20 NoCat	1	LIBRARY - OPT. LIBRARY COFFERED CEILING AS PER PLAN.
2303 30Sep20 NoCat	1	.LIBRARY - OPT. WAFFLE CEILING, BEAM DETAIL AS PER PLAN (4 BOXES) OPTION #1 CTR-B07
2303 30Sep20 NoCat	1	LIBRARY - OPT. LIBRARY COFFERED CEILING AS PER PLAN.
2303 30Sep20 NoCat	5	MAIN FLOOR: 9' DOORS ON MAIN FLOOR (EXCLUDING MUDROOM AND MUDROOM WIC)
2303 30Sep20 NoCat	1	.MASTER BEDROOM - OPT. 10 FOOT TRAY CEILING AS PER PLAN **SQUARE OFF - LIKE ELEVATION C**
2303 30Sep20 NoCat	1	.DRESSING ROOM: SUN TUNNEL EXTENSION, 6 FOOT RIGID TUNNEL EXTENSION [2TR 6 FOOT] - UP TO 6 FOOT MAX.

NETWORK AND WIRING

Invoice	Qty.	Description
2303 72,259 30Sep20	1	GREAT ROOM: CONDUIT PIPE - FOR WALL MOUNT TV - LOCATE APPROX. 66" A.F.F. TERMINATING AT CABLE SEE PLAN FOR LOCATION



CONSTRUCTION SUMMARY

Lot: 117
Model: 40.06 A LILAC
Project/Phase: Pine Valley Forevergreen / 1

PAINT

Invoice	Qty.	Description
2303 30Sep20 NoCat	1	GREAT ROOM - OPT. COFFERED CEILING AS PER PLAN.
2303 30Sep20 NoCat	1	.GREAT ROOM - OPT. WAFFLE CEILING, BEAM DETAIL AS PER PLAN (9 BOXES) OPTION # 1 CTR-B07
2303 30Sep20 NoCat	1	.LIBRARY - OPT. WAFFLE CEILING, BEAM DETAIL AS PER PLAN (4 BOXES) OPTION #1 CTR-B07
2303 30Sep20 NoCat	18	.2ND FLOOR THRU OUT: INCREASE HEIGHT OF DOOR TO 8FT SECOND FLOOR - PER DOOR
2303 30Sep20 NoCat	1	LIBRARY - OPT. LIBRARY COFFERED CEILING AS PER PLAN.
2303 30Sep20 NoCat	5	MAIN FLOOR: 9` DOORS ON MAIN FLOOR (EXCLUDING MUDROOM AND MUDROOM WIC)
2303 30Sep20 NoCat	1	.MASTER BEDROOM - OPT. 10 FOOT TRAY CEILING AS PER PLAN **SQUARE OFF - LIKE ELEVATION C**

PLUMBING

Invoice	Qty.	Description
2303 72,345 30Sep20	1	-- DO NOT INSTALL: .BASEMENT: ADDITIONAL 3-PC BATHROOM

WINDOWS AND DOORS

Invoice	Qty.	Description
2303 30Sep20 NoCat	1	.DRESSING ROOM: SUN TUNNEL EXTENSION, 6 FOOT RIGID TUNNEL EXTENSION [2TR 6 FOOT] - UP TO 6 FOOT MAX.

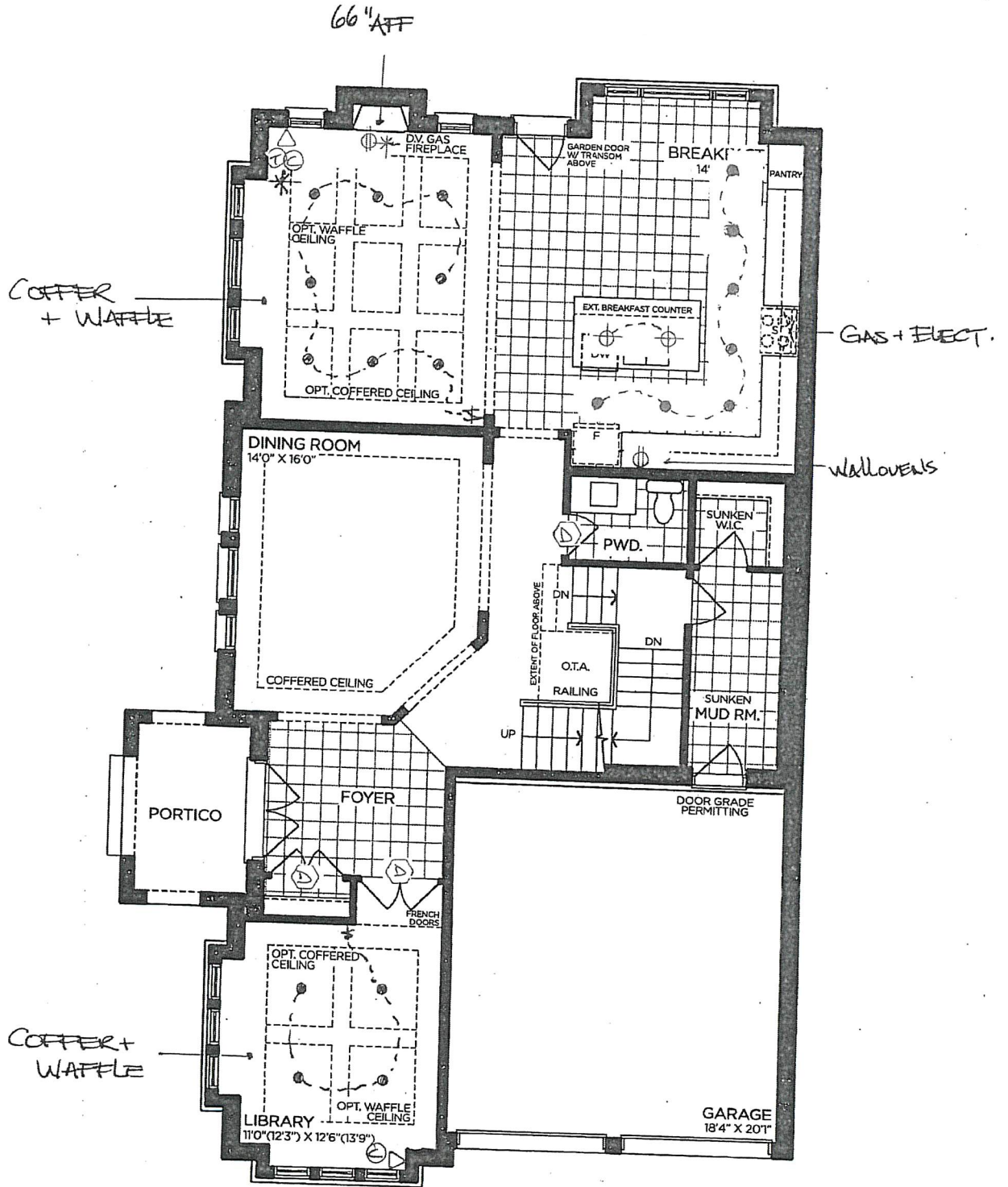
SCHEDULE 'F'



PV-117
 APRIL 21 2020
 REVISED APRIL 28 2020

The Lilac 40' SERIES

→ Elevation A • 3,425 sq.ft.
 Elevation B • 3,385 sq.ft.



GROUND FLOOR | ELEV. A

VENDOR	
PURCHASER	
PURCHASER	

GOLDPARK
 WORTH MORE™

Prices, figures, illustrations, sizes, features and finishes are subject to change without notice. Areas and dimensions are approximate and actual usable floor space may vary from the stated area. Layout may be reverse of the unit purchased. E. & O.E. 4006

SCHEDULE 'F'



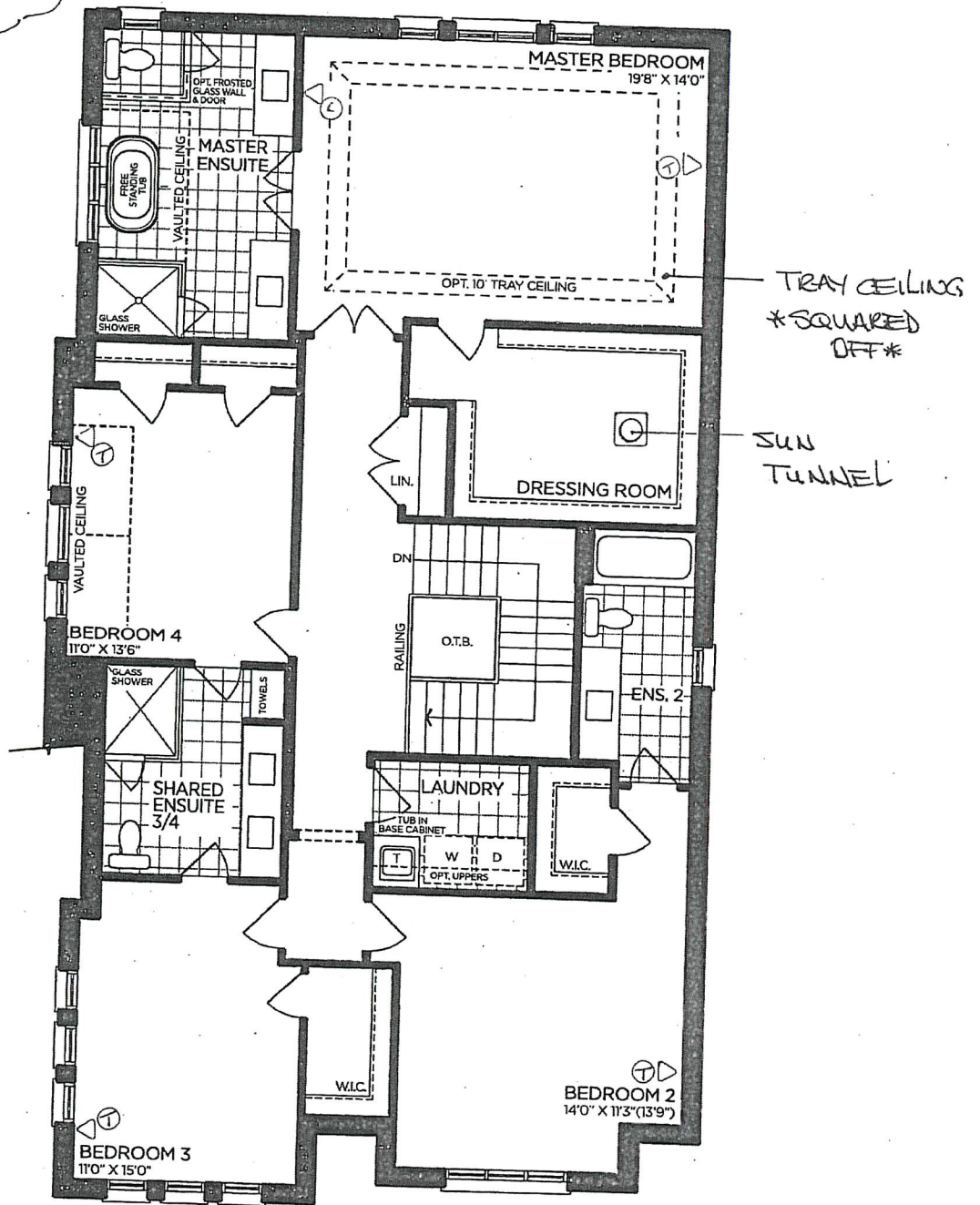
PV-117
APRIL 2, 2020

REVISED APRIL 28, 2020

The
Lilac
40' SERIES

Elevation A • 3,425 sq.ft.
Elevation B • 3,385 sq.ft.

8' DOORS
on 2ND FLOOR



SECOND FLOOR | ELEV. A

VENDOR

PURCHASER

PURCHASER

GOLDPARK
WORTH MORE™

Prices, figures, illustrations, sizes, features and finishes are subject to change without notice. Areas and dimensions are approximate and actual usable floor space may vary from the stated area. Layout may be reverse of the unit purchased. E. & O.E. 4006

SCHEDULE 'F'

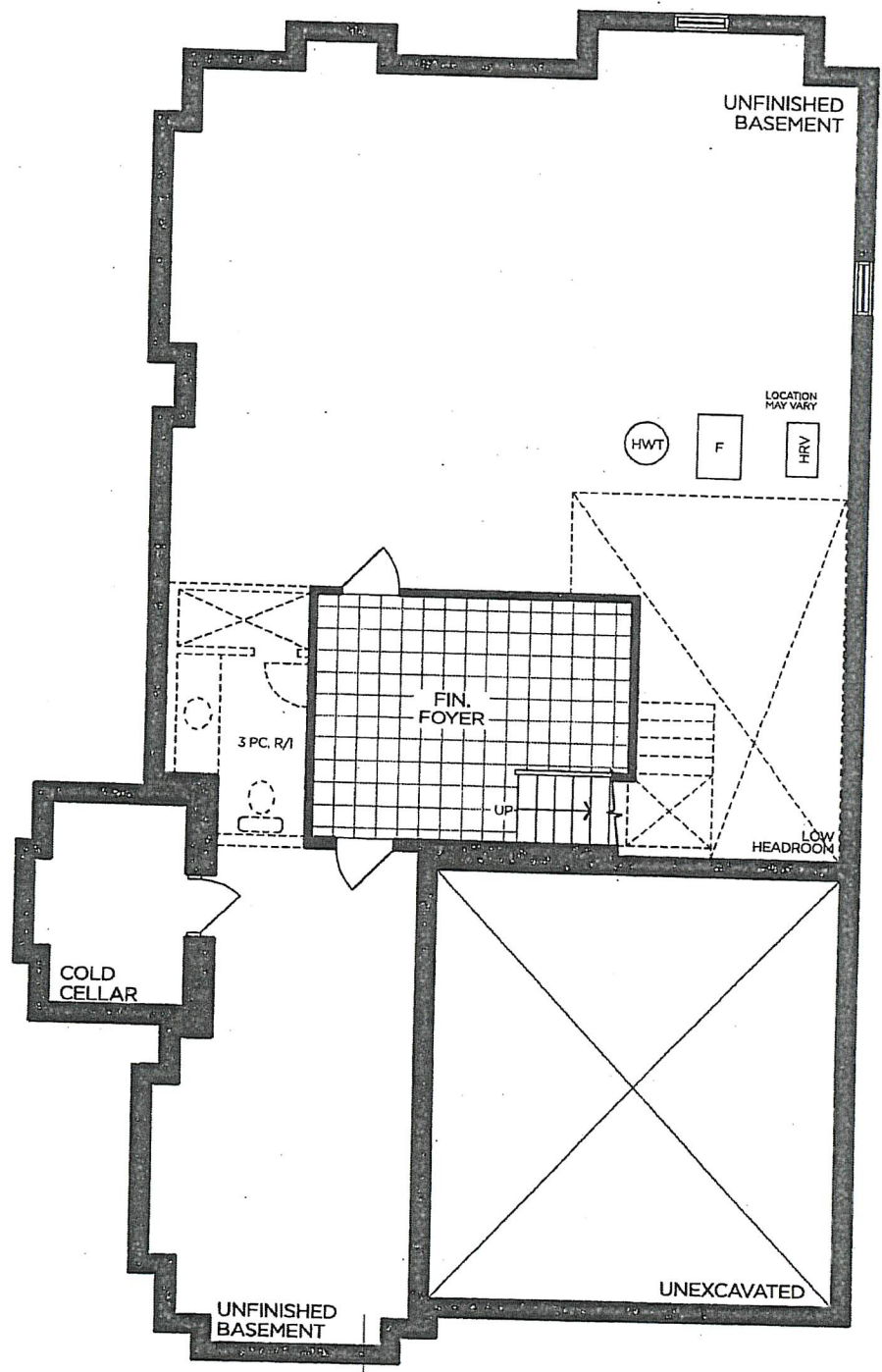


PV-117
APRIL 21 2020

REVISED APRIL 28 2020

The
Lilac
40' SERIES

Elevation A • 3,425 sq.ft.
Elevation B • 3,385 sq.ft.



24x30"

BASEMENT | ELEV. A

BACK FLOW
PREVENTER
VALVE

VENDOR	
PURCHASER	
PURCHASER	

GOLDPARK
WORTH MORE™

Prices, figures, illustrations, sizes, features and finishes are subject to change without notice. Areas and dimensions are approximate and actual usable floor space may vary from the stated area. Layout may be reverse of the unit purchased. E. & O.E. 4006

HOME APPLIANCES

LG LAUNDRY

WT7850HVA
6.0 cu.ft. Capacity Top Load Washer

KEY FEATURES

- TurboWash3D™ Technology
- TurboDrum™ with High Efficiency Direct Drive (HEDD)
- Allergiene™ Steam Cycle Certified by Asthma Canada
- SmartThinQ® Technology (Wi-Fi Enabled)
- 6Motion™ Technology
- ENERGY STAR® Qualified
- Wi-Fi Connectivity
- Inverter BLDC Pump Motor



Enjoy new ways to control your home with LG smart appliances

SmartThinQ®

PRODUCT FEATURES

CAPACITY	
Capacity	6.0 cu. ft.
APPEARANCE	
Design Look	Rear Control
Intelligent Electronic Controls with Dual LED Display	•
Touch Buttons	•
Dial-A-Cycle™	•
ENERGY	
ENERGY STAR®	•
WASH PROGRAMS	
No. of Programs	14
Wash Programs	Normal, Heavy Duty, Bedding, Deep Wash, Bright Whites™, Sanitary, Allergiene™, Pre Wash+Normal, Delicates, Perm.Press, Towels, Speed Wash, Waterproof, Downloaded
No. of Options	16
Options	Steam, Cold Wash, Remote Start, Delay Wash, Wi-Fi Connect, Signal, TurboWash™, Water Plus, Extra Rinse, Tub Clean, Control Lock, Add Garment, Rinse+Spin, Stain Care, Soak, Spin Only
No. of Wash/Rinse Temps	5
	Extra Hot, Hot, Warm, Cold, Tap Cold
Spin Speeds	Extra High, High, Medium, Low, No Spin
No. of Water Levels	Automatically adjusts to the size of load
No. of Soil Levels	3
FABRIC CARE FEATURES	
SmartRinse™ Jet Spray System	•
ColdWash™ Option	•
SenseClean™ System	•
CONVENIENCE FEATURES	
3 Tray Dispenser	Main Wash, Fabric Softener + Liquid Bleach
TrueBalance™ Plus Anti-Vibration System	•
LoadSense	•
Status Indicator(s)	•
End of Cycle Signal	•
Child Lock	•
Auto Suds Removal	•
Forced Drain System	•
Add Garment Indicator	•
LoDecibel™ Quiet Operation	•
Leveling Legs	4 Adjustable Legs



SMART THINQ™ TECHNOLOGY	
SmartDiagnosis™	•
Wi-Fi Connectivity	•
MOTOR AND AGITATOR	
Motor Type	High Efficiency Direct Drive (HEDD)
Motor Speed	Variable
Max RPM	950
Axis	Vertical
MATERIALS AND FINISHES	
NeveRust™ Stainless Steel Drum & Washplate	•
Cabinet	Painted Steel
Control Panel	Plastic
Lid	Tempered Glass
Available Colours	Black Steel(B), Graphite(V)
POWER SOURCE	
Ratings	CSA Listed
Electrical Requirements	120V, 60Hz, 10 Amps
Type	Electric
DIMENSIONS	
Product (WxHxD)	27" x 44 1/2" x 28 3/8" (S7 1/4" H with lid open)
Carton (WxHxD)	29 1/2" x 47" x 31 1/4"
Weight (Product/Carton)	138.9 lbs/162.3 lbs
LIMITED WARRANTY	
1 Year Parts and Labour, 3 Years on Drum, 10 Years on Direct Drive Motor	
UPC CODES	
WT7850HVA Washer	772454072758
DLEX7900VE Electric Dryer	772454072765

© 2018 LG Electronics Canada, Inc. All rights reserved. "LG Life's Good" is a registered trademark of LG Corp. All other product and brand names are trademarks or registered trademarks of their respective owners. Design, features and specifications are subject to change without notice. Non-metric weights and measurements are approximate. Some features may require Internet access. Content and services may vary by product and are subject to change without notice. 04/03/2018

PV-117 
September 23, 2020

HOME APPLIANCES

LG LAUNDRY

DLEX7900VE

7.3 cu.ft. Super Capacity Dryer



KEY FEATURES

- EasyLoad™ Door
- TurboSteam™ Technology
- SmartThinQ® Technology (Wi-Fi Enabled)
- Sensor Dry System
- ENERGY STAR® Qualified
- Wi-Fi Connectivity
- Smart Pairing
- Stainless Steel Drum



Enjoy new ways to control your home with LG smart appliances

PRODUCT FEATURES

CAPACITY	
Capacity	7.3 cu. ft.
APPEARANCE	
Design Look	Rear Control
Intelligent Electronic Controls with Dual LED Display	•
Touch Buttons	•
Dial-A-Cycle™	•
ENERGY	
ENERGY STAR® Qualified	•
DRYER PROGRAMS	
No. of Programs	14
Programs (Sensor Dry)	Normal, Heavy Duty, Bedding, Small Load, Anti-Bacterial, Steam Fresh™, Steam Sanitary™, Delicates, Perm.Press, Towels, Sportswear, Downloaded, Speed Dry, Air Dry
Programs (Manual Dry)	
No. of Options	13
Options	TurboSteam, Remote Start, Reduce Static, Wi-Fi Connect, Energy Saver, Default On/Off, More Time, Less Time, Wrinkle Care, Drum Light, Damp Dry Signal, Control Lock, Signal
Temperature Settings	High, Medium High, Medium, Low, Ultra Low
Drying Levels	Very Dry, More Dry, Normal Dry, Less Dry, Damp Dry
Manual Dry Times	60 min., 50 min., 40 min., 30 min., 20 min., More Time/Less Time
CONVENIENCE FEATURES	
3 Minute Installation Check	•
Sensor Dry (Dual Sensor)	•
LoDecibel™ Quiet Operation	•
End of Cycle Signal	•
Drum Light	•
Reversible Door	•
FlowSense™ Duct Clogging Indicator	•
Venting Option	4 Way Venting
Leveling Legs	4 Adjustable Legs
Remaining Time Display/Status Indicator(s)	•
Damp Dry Beep	•
EasyLoad™ Door	•



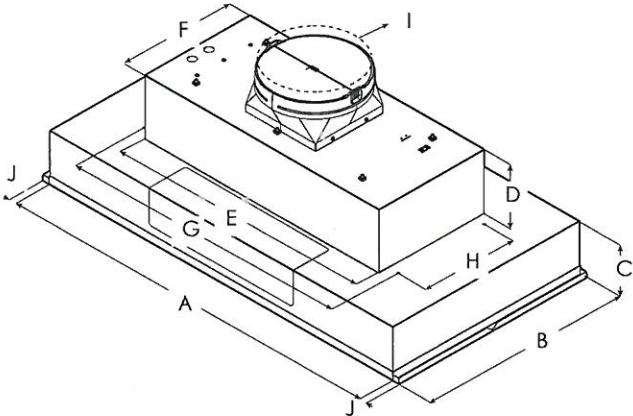
SMART THINQ™ TECHNOLOGY	
SmartDiagnosis™	•
Wi-Fi Connectivity	•
Smart Pairing	•
MATERIALS AND FINISHES	
NeveRust™ Stainless Steel Drum	•
Tub Rear	Painted
Cabinet	Painted Steel
Control Panel	Plastic
Door / Trim	Glass / Chrome
Available Colours	Black Steel(B) / Graphite(V)
POWER SOURCE	
Ratings	CSA Listed
Electrical Requirements	230V, 24 Amps
Type	Electric
DIMENSIONS	
Product (WxHxD)	27" x 44 1/4" x 29 1/2" (50 1/4" D with door open)
Carton (WxHxD)	29 1/2" x 48" x 31 1/4"
Weight (Product/Carton)	129.8 lbs / 149.6 lbs
LIMITED WARRANTY	
	1 Year Parts and Labour
UPC CODES	
DLEX7900VE Electric Dryer	772454072765
WT7850HVA Washer	772454072758

ELICA PRO SERIES
TRENTO

PV-117
September 23, 2020




Trento provides professional grade performance, while being discreetly mounted inside the cabinetry. It is available with a 1200 CFM blower for extraordinary ventilating power. Plus the All-In-One design avoids the need to purchase a stainless liner. Hidden metallic in/out knob controls operate the 4-speed blower and LED lighting. A cleaner kitchen is ensured by Elica's patented angled baffle filters, which capture a higher percentage of contaminants and hold larger volumes of grease than traditional baffle filters.



	ETR134SS ETR134S1
A	34 1/2" (87.6 cm)
B	18" (45.7 cm)
C	5 7/16" (13.8 cm)
D	6 1/2" (16.4 cm)
E	27 7/16" (70 cm)
F	12 7/16" (31.6 cm)
G	29 13/16" (75.7 cm)
H	10 1/8" (25.7 cm)
I	10" (25.4 cm)
J	3/4" (1.9 cm)



ELICA PRO SERIES
TRENTO

PV-117 
September 23, 2020





SPECIFICATIONS


	34" Unit
Model:	ETR134SS ETR134SI
Dimensions:	34 1/2"W x 18"D x 11 1/2"H
Blower Type(internal):	1200 CFM (4-speed)
Blower Performance:	
Speed 1	380 CFM
Speed 2	660 CFM
Speed 3	950 CFM
Speed 4	1200 CFM
Noise (sones):	
Working Speed	Min:2.05, Max:7.5
Finish:	Stainless Steel
Controls:	Fully retractable rotating knobs with blue backlighting
Illumination:	
(replaceable lamps 1 intensity)	2 LED, 7.5 W
Filter Type:	Dishwasher-Safe, Professional Stainless Steel
Angled Baffle Filters:	2
Duct Transition:	10" Round with BackDraft Damper (top only)
Installation Type:	Ducted Installation Only
Electrical:	120V - 60 Hz
CONSUMABLE PARTS:	
Replacement Grease Filter (1):	GRI0140692A
Replacement Light Bulb (1):	LMP0131098


*Consumable parts are sold in units of one (1). Order accordingly


PLUS FEATURES


- 

HUSH SYSTEM - An exclusive sound deadening technology that effectively reduces sound levels by over 35%
- 

LED CONSUMER REPLACEABLE BULB - High quality LED lighting usually requires a skilled technician to replace lamps. Avoid this expense with Elica's new LED lamps that enable homeowners to replace in seconds
- 

SEAMLESS CRAFTSMANSHIP - Heavy gauge stainless steel "Seamless" construction that delivers refined elegance.
- 

STAINLESS STEEL BAFFLE FILTERS WITH GREASE COLLECTORS - Designed for high airflow cooking, the "S" shape design traps high volumes of grease
- 

PROFESSIONAL PERFORMANCE - Special features and high performances for models with aspiration capacity between 600 and 1200 CFM's
- 

HEAT GUARD - Senses extreme temperatures (>158 degrees) and automatically adjusts the blower speed to HIGH

PV-117

September 23, 2020



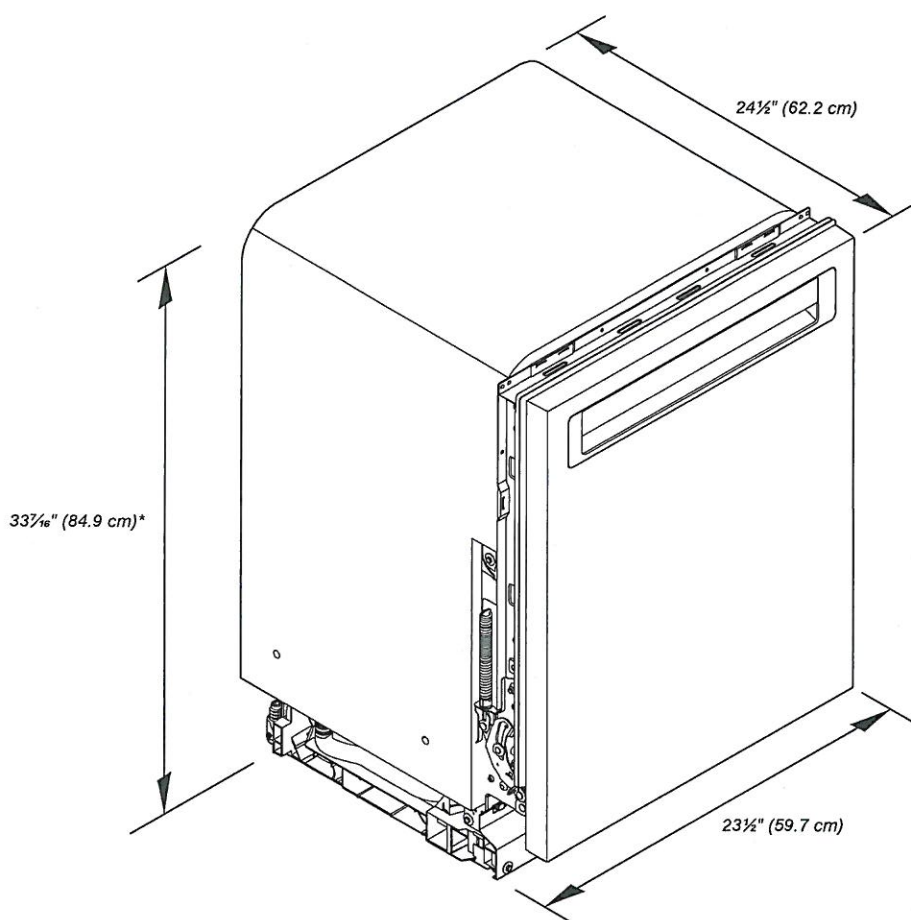
KitchenAid®

24" Dishwasher

DETAILED PLANNING DIMENSIONS GUIDE

Applies to all model numbers starting with;
KDFE104K, KDFE204K, KDTE204K, KDTE204LPA, KDFM404K,
KDTM404K, KDPM604K, KDTM604K, KDPM704K, KDTM704K,
KDTM704LPA, KDPM804K, KDTM804K

PRODUCT DIMENSIONS



*Dishwasher can be raised 1 1/16" (3.7 cm) with feet fully extended.

Because Whirlpool Corporation policy includes a continuous commitment to improve our products, we reserve the right to change materials and specifications without notice.

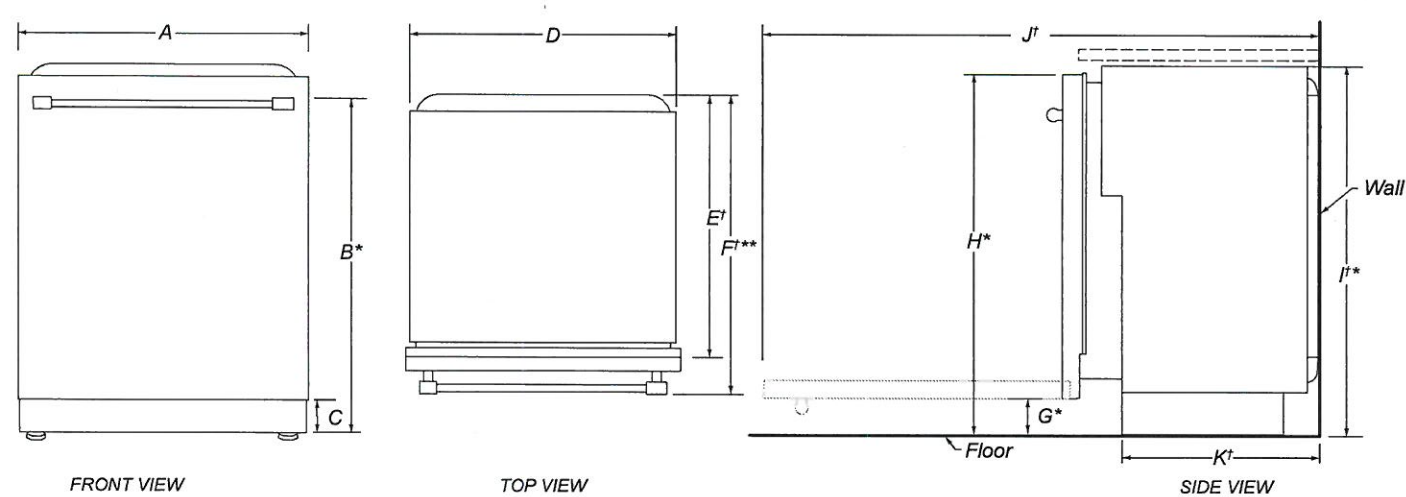
Dimensions are for planning purposes only. For complete details, see Installation Instructions packed with product. Specifications subject to change without notice.

DV-117 
September 23, 2020

KitchenAid®

24" Dishwasher
DETAILED PLANNING DIMENSIONS GUIDE

PRODUCT DIMENSIONS (CONTD.)



	DESCRIPTION	DIMENSIONS
A	Width of door	23½" (59.7 cm)
B*	Height to top of handle	30¹³⁄₁₆" (78.3 cm)
C	Height of adjustable toe kick	3⁵⁄₁₆" (8.4 cm) - min. 4¹¹⁄₁₆" (11.8 cm) - max.
D	Width of recessed dishwasher	22⁵⁄₈" (57.4 cm)
E†	Depth without door	22⁵⁄₈" (57.5 cm)
F†**	Depth with Towel Bar Handle	26⁷⁄₈" (68.3 cm)
	Depth with Pocket Handle	24½" (62.6 cm)
	Depth of Panel-Ready Models	24" (61.0 cm)
G*	Height to bottom of door (min.)	3⁷⁄₁₆" (8.4 cm)
H*	Height to top of door (min.)	33⁷⁄₁₆" (84.9 cm)
I*	Height of recessed dishwasher (min.)	33⁵⁄₈" (85.4 cm)
J†	Depth with door fully open (min.)	50⁹⁄₁₆" (127.4 cm)
K†	Depth with toe kick (min.)	20¹³⁄₁₆" (52.9 cm)


†Insulation blanket thickness adds up to 11/16" (1.8 cm) but can crush up to 1/8" (0.3 cm).

*Dishwasher can be raised 1¼" (3.7 cm) with feet fully extended.

**For panel-ready models, dishwasher depth is 24" (61.0 cm), not including the ¾" (1.9 cm) custom door panel.

Because Whirlpool Corporation policy includes a continuous commitment to improve our products, we reserve the right to change materials and specifications without notice.

Dimensions are for planning purposes only. For complete details, see Installation Instructions packed with product. Specifications subject to change without notice.

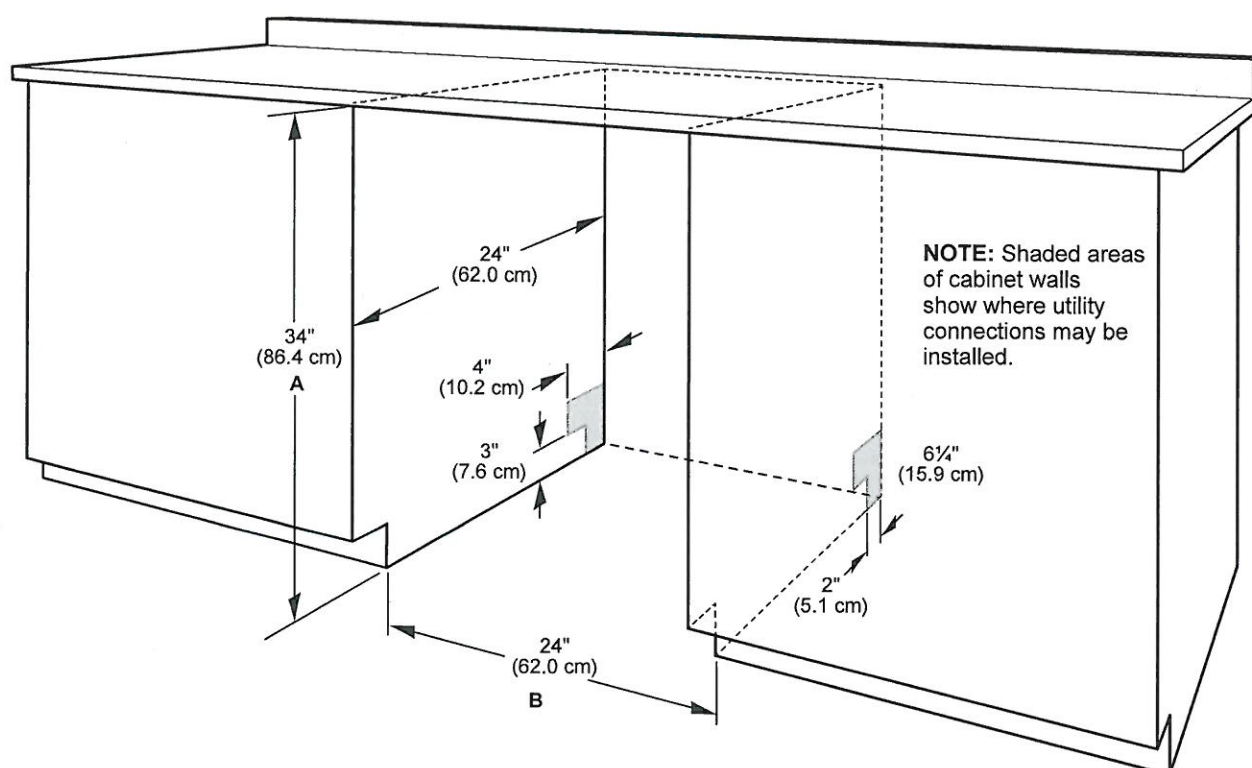
PV-117 
September 23, 2020

KitchenAid® 24" Dishwasher

DETAILED PLANNING DIMENSIONS GUIDE

OPENING/CLEARANCE DIMENSIONS

IMPORTANT: Check that all surfaces have no protrusions that would prohibit dishwasher installation.



A. Measured from the lowest point on the underside of the countertop. May be reduced to 33 1/2" (85.1 cm) by removing the wheels and perforated area of insulation (blanket) on dishwasher.

B. Minimum, measured from narrowest point of opening.

NOTE: Corner locations require a 2" (5.1 cm) minimum clearance between the side of the dishwasher door and the wall or cabinet.

Because Whirlpool Corporation policy includes a continuous commitment to improve our products, we reserve the right to change materials and specifications without notice.

Dimensions are for planning purposes only. For complete details, see Installation Instructions packed with product. Specifications subject to change without notice.

PV-117
September 23, 2020

KitchenAid®

French Door w/Ice Dispenser Refrigerator

PRODUCT MODEL NUMBERS

KRFC704F KRFC604F

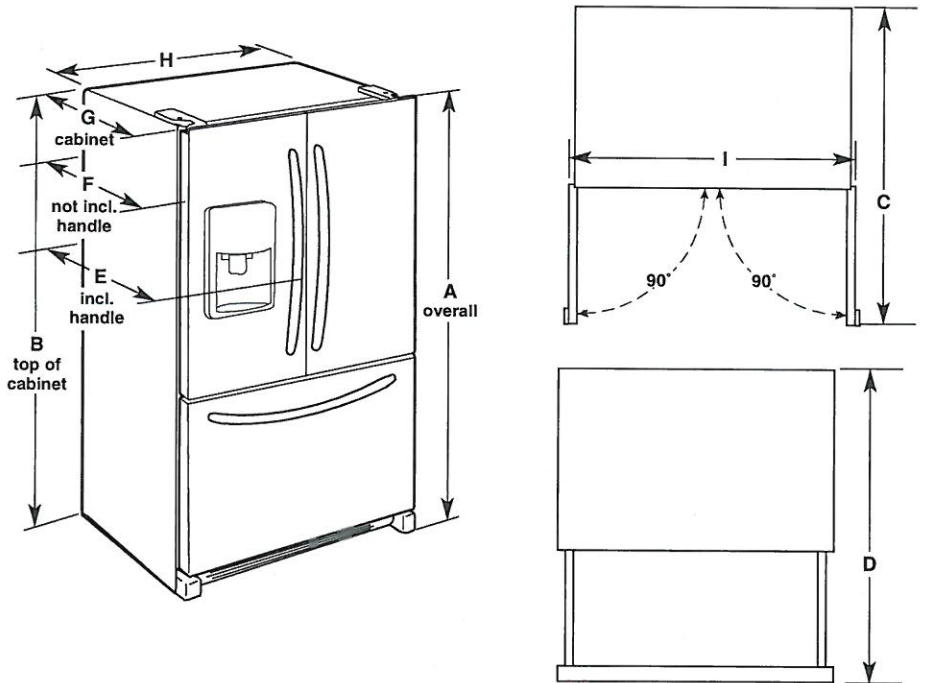
Electrical: A 115-volt, 60 Hz, AC-only 15- or 20-amp fused, grounded electrical supply is required. It is recommended that a separate circuit serving only your refrigerator and approved accessories be provided. Use an outlet that cannot be turned off by a switch. Do not use an extension cord.

Water: A cold water supply with water pressure between 35 and 120 psi (241 and 827 kPa) is required to operate the water dispenser and ice maker. If you have questions about your water pressure, call a licensed, qualified plumber.

NOTE: If the water pressure is less than what is required, the flow of water from the water dispenser could decrease or ice cubes could be hollow or irregular shaped.

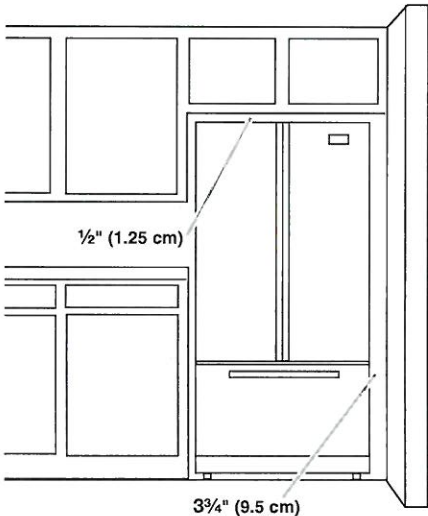
Reverse Osmosis Water Supply:
IMPORTANT: The pressure of the water supply coming out of a reverse osmosis system going to the water inlet valve of the refrigerator needs to be between 35 and 120 psi (241 and 827 kPa).
If a reverse osmosis water filtration system is connected to your cold water supply, the water pressure to the reverse osmosis system needs to be a minimum of 40 to 60 psi (276 to 414 kPa).

PRODUCT DIMENSIONS



Model Size	Height - Overall "A"	Height - Top of Cabinet "B"	Depth - Door Open 90° "C"	Depth - Drawer Open "D"	Depth - With Handles "E"	Depth - Without Handles "F"	Depth - Cabinet Only "G"	Width - Cabinet "H"	Width - Door Open 90° "I"
23.7 cu. ft	71 ⁷ / ₈ " (182.6 cm)	70 ⁷ / ₈ " (180.0 cm)	43 ³ / ₄ " (111.1 cm)	45 ⁷ / ₈ " (116.5 cm)	31 ¹ / ₂ " (80.0 cm)	28 ⁷ / ₈ " (73.3 cm)	24 ³ / ₈ " (61.9 cm)	35 ⁵ / ₈ " (90.5 cm)	43 ⁵ / ₈ " (110.8 cm)

LOCATION REQUIREMENTS



IMPORTANT: This refrigerator is designed for indoor, household use only. To ensure proper ventilation for your refrigerator, allow for a 1/2" (1.25 cm) of space on each side and at the top. Allow for a 1" (2.54 cm) space behind the refrigerator. If your refrigerator has an ice maker, allow extra space at the back for the water line connections. When installing your refrigerator next to a fixed wall, leave a 3 3/4" (9.5 cm) minimum space between the refrigerator and wall to allow the door to swing open.

NOTE: This refrigerator is intended for use in a location where the temperature ranges from a minimum of 55°F (13°C) to a maximum of 110°F (43°C). The preferred room temperature range for optimum performance, which reduces electricity usage and provides superior cooling, is between 60°F (15°C) and 90°F (32°C). It is recommended that you do not install the refrigerator near a heat source, such as an oven or radiator.

PV-117 
 September 23, 2020

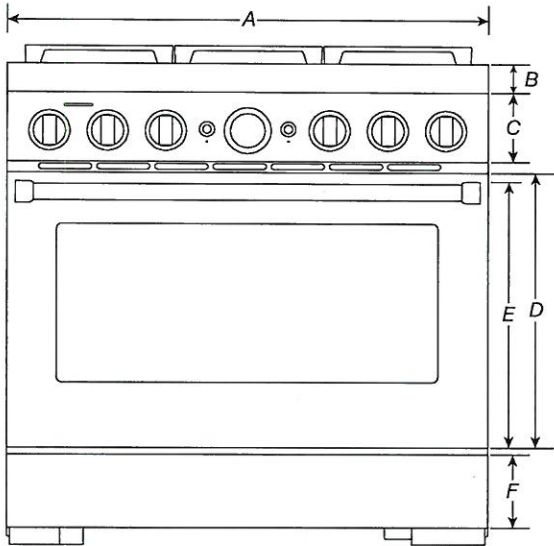
DIMENSIONS

COMMERCIAL-STYLE RANGES

PRODUCT DIMENSIONS



MODEL #	30" (76.2 cm) RANGES DUAL-FUEL/GAS KFDC500J/KFGC500J		36" (91.4 cm) RANGES DUAL-FUEL/GAS KFDC506J/KFGC506J	
	in	cm	in	cm
Overall Width (A)	29 ⁷ / ₈	75.9	35 ⁷ / ₈	91.1
Bullnose Height (B)	2 ³ / ₁₆	5.6	2 ³ / ₁₆	5.6
Control Panel Height (C)	5 ⁵ / ₁₆	13.5	5 ⁵ / ₁₆	13.5
Door Height (D)	20 ¹¹ / ₁₆	52.6	20 ¹¹ / ₁₆	52.6
Door Bottom to Handle Top (E)	20	50.8	20	50.8
Toe-Kick Height (F)	5 ¹ / ₂	14	5 ¹ / ₂	14



FRONT VIEW

IMPORTANT: Dimensional specifications are provided for planning purposes only.
 Do not make any cutouts based on this information. Refer to the Installation Guide before
 selecting cabinetry, verifying electrical/gas connections, making cutouts or beginning installation.
 All KitchenAid® appliances are appropriately UL, CUL or CSA approved.

PV-117
September 23, 2020

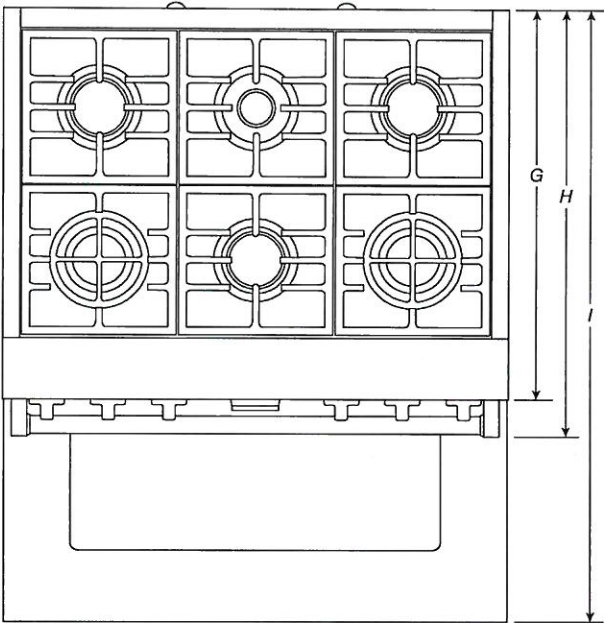
DIMENSIONS

COMMERCIAL-STYLE RANGES

PRODUCT DIMENSIONS



MODEL #	30" (76.2 cm) RANGES DUAL-FUEL/GAS KFDC500J/KFGC500J		36" (91.4 cm) RANGES DUAL-FUEL/GAS KFDC506J/KFGC506J	
	in	cm	in	cm
Depth with Control Panel Overhang (G)	27¾	70.5	27¾	70.5
Depth with Handle (H)	30¾	76.9	30¾	76.9
Depth with Door Fully Open (I)	46½	118.1	46½	118.1



TOP VIEW

IMPORTANT: Dimensional specifications are provided for planning purposes only.
Do not make any cutouts based on this information. Refer to the Installation Guide before selecting cabinetry, verifying electrical/gas connections, making cutouts or beginning installation.
All KitchenAid® appliances are appropriately UL, CUL or CSA approved.



lv-117
September 23, 2020



DIMENSIONS

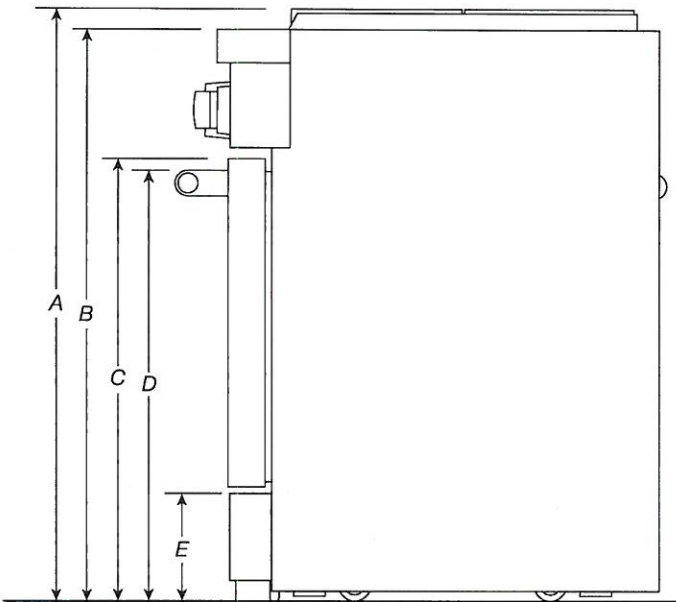
COMMERCIAL-STYLE RANGES

PRODUCT DIMENSIONS



MODEL #	30" (76.2 cm) RANGES DUAL-FUEL/GAS KFDC500J/KFGC500J		36" (91.4 cm) RANGES DUAL-FUEL/GAS KFDC506J/KFGC506J		48" (121.9 cm) RANGES DUAL-FUEL/GAS KFDC558J/KFGC558J	
	in	cm	in	cm	in	cm
Grates Top Height (A)	37 ³ / ₁₆	94.5	37 ³ / ₁₆	94.5	37 ³ / ₁₆	94.5
Cooking Surface Top Height (B)	36	91.4	36	91.4	36	91.4
Door Top Height (C)	27 ⁷ / ₈	70.8	27 ⁷ / ₈	70.8	27 ⁷ / ₈	70.8
Handle Top Height (D)	27 ¹ / ₈	68.9	27 ¹ / ₈	68.9	27 ¹ / ₈	68.9
Toe-Kick Height (E)	6 ⁵ / ₈	16.9	6 ⁵ / ₈	16.9	6 ⁵ / ₈	16.9
OTHER DIMENSIONS						
Maximum Feet Extension Height*	1 ¹ / ₂	3.8	1 ¹ / ₂	3.8	1 ¹ / ₂	3.8

* **IMPORTANT:** Minimum height dimensions are at the lowest point of the height adjustment range.
When the leveling legs are fully extended, all heights have 1¹/₂" (3.8 cm) of added height.



SIDE VIEW

IMPORTANT: Dimensional specifications are provided for planning purposes only.
Do not make any cutouts based on this information. Refer to the Installation Guide before selecting cabinetry, verifying electrical/gas connections, making cutouts or beginning installation.
All KitchenAid® appliances are appropriately UL, CUL or CSA approved.



PV-117
September 23, 2020

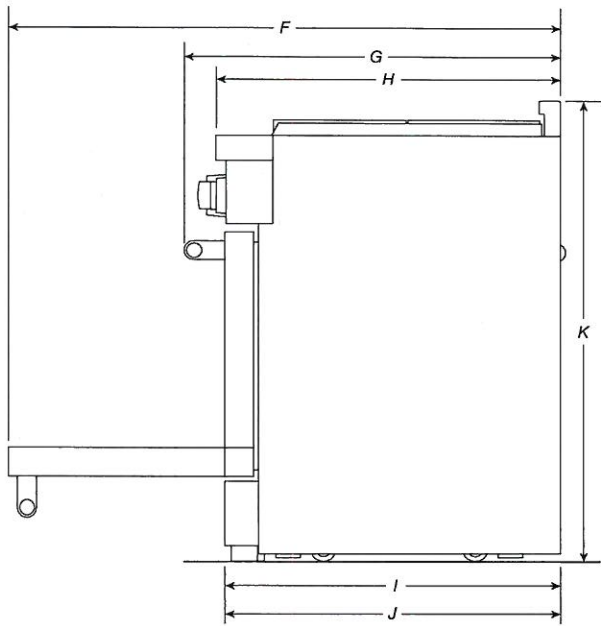
DIMENSIONS

COMMERCIAL-STYLE RANGES

PRODUCT DIMENSIONS

MODEL #	30" (76.2 cm) RANGES DUAL-FUEL/GAS KFDC500J/KFGC500J		36" (91.4 cm) RANGES DUAL-FUEL/GAS KFDC506J/KFGC506J		48" (121.9 cm) RANGES DUAL-FUEL/GAS KFDC558J/KFGC558J	
	in	cm	in	cm	in	cm
Depth with Door Fully Open (F)	46½	118.1	46½	118.1	46½	118.1
Depth with Handle (G)	30¼	76.9	30¼	76.9	30¼	76.9
Depth with Control Panel Overhang (H)	27¾	70.5	27¾	70.5	27¾	70.5
Depth to Toe-Kick with Door (I)	27	68.6	27	68.6	27	68.6
Depth with Door (J)	27	68.6	27	68.6	27	68.6
OTHER DIMENSIONS						
Gas Vent Height (K)*	39	99.1	39	99.1	39	99.1


*Gas Units only: KFGC500J, KFGC506J and KFGC558J.



SIDE VIEW

IMPORTANT: Dimensional specifications are provided for planning purposes only.
Do not make any cutouts based on this information. Refer to the Installation Guide before selecting cabinetry, verifying electrical/gas connections, making cutouts or beginning installation.
All KitchenAid® appliances are appropriately UL, CUL or CSA approved.



pv-117 
September 23, 2020

DIMENSIONS

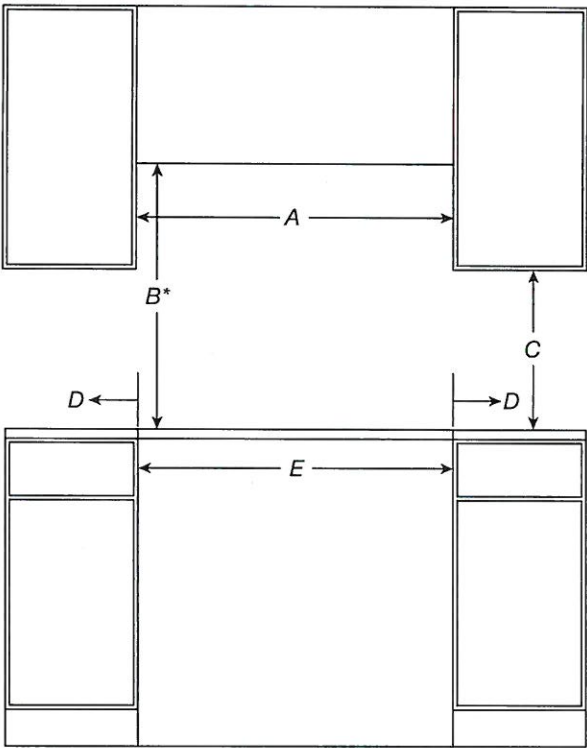
7 of 30

COMMERCIAL-STYLE RANGES

OPENING/CLEARANCE DIMENSIONS

MODEL #	30" (76.2 cm) RANGES DUAL-FUEL/GAS KFDC500J/KFGC500J		36" (91.4 cm) RANGES DUAL-FUEL/GAS KFDC506J/KFGC506J		48" (121.9 cm) RANGES DUAL-FUEL/GAS KFDC558J/KFGC558J	
	in	cm	in	cm	in	cm
Combustible Area above Cooking Surface Width (min.) (A)	30	76.2	36	91.4	48	121.9
Bottom of Cabinet Height above Cooking Surface (min.) (B)*	42	106.7	58	147.3	58	147.3
Bottom of Cabinet Height above Countertop (min.) (C)	18	45.7	18	45.7	18	45.7
Distance to Fixed Wall or Combustible Material (min.) (D)	12	30.5	12	30.5	12	30.5
Opening Width (min.) (E)	30	76.2	36	91.4	48	121.9

* If installing a hood or hood liner above the range, follow the hood or hood liner instructions for dimensional clearances above the cooking surface.



FRONT VIEW

IMPORTANT: Dimensional specifications are provided for planning purposes only.
Do not make any cutouts based on this information. Refer to the Installation Guide before selecting cabinetry, verifying electrical/gas connections, making cutouts or beginning installation.
All KitchenAid® appliances are appropriately UL, CUL or CSA approved.

KitchenAid®

PV-117
September 23, 2020

DIMENSIONS

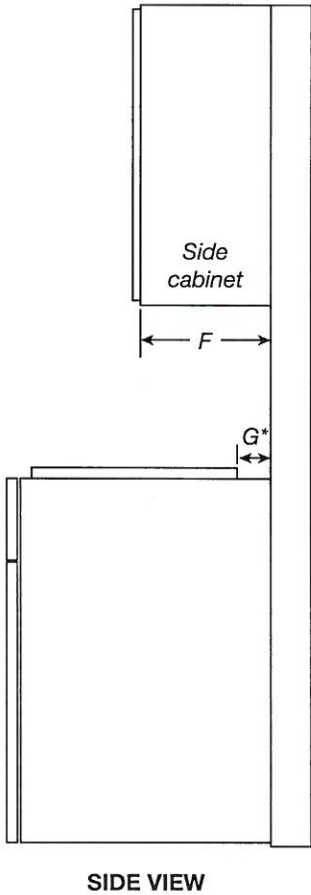
COMMERCIAL-STYLE RANGES

OPENING/CLEARANCE DIMENSIONS

MODEL #	30" (76.2 cm) RANGES DUAL-FUEL/GAS KFDC500J/KFGC500J		36" (91.4 cm) RANGES DUAL-FUEL/GAS KFDC506J/KFGC506J		48" (121.9 cm) RANGES DUAL-FUEL/GAS KFDC558J/KFGC558J	
	in	cm	in	cm	in	cm
Upper Cabinet Depth (max.) (F)	13	33	13	33	13	33
Depth from Wall to Grates (G)*	1½	3.9	1½	3.9	1½	3.9
Depth from Wall to back of Unit**	0	0	0	0	0	0

* If the back wall is constructed of a combustible material and a backsplash is not installed a 7½" (19.1 cm) minimum clearance is required.

** If the back wall is constructed of a combustible material and a backsplash is not installed a 6" (15.2 cm) minimum clearance is required.



IMPORTANT: Dimensional specifications are provided for planning purposes only.
Do not make any cutouts based on this information. Refer to the Installation Guide before selecting cabinetry, verifying electrical/gas connections, making cutouts or beginning installation.
All KitchenAid® appliances are appropriately UL, CUL or CSA approved.



PV-117
September 23, 2020

DIMENSIONS

COMMERCIAL-STYLE RANGES

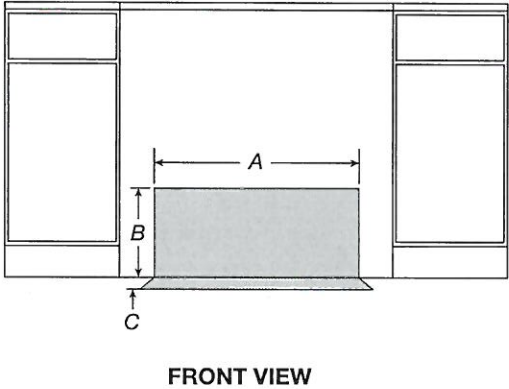
ELECTRICAL REQUIREMENTS

MODEL #	30" (76.2 cm) RANGES DUAL-FUEL/GAS KFDC500J/KFGC500J		36" (91.4 cm) RANGES DUAL-FUEL/GAS KFDC506J/KFGC506J		48" (121.9 cm) RANGES DUAL-FUEL/GAS KFDC558J/KFGC558J	
	in	cm	in	cm	in	cm
Electrical Zone Width (A)	22	55.9	28	71.1	40	101.6
Electrical Zone Height (B)	15	38.1	15	38.1	15	38.1
Electrical Zone Depth (C)	5	12.7	5	12.7	5	12.7

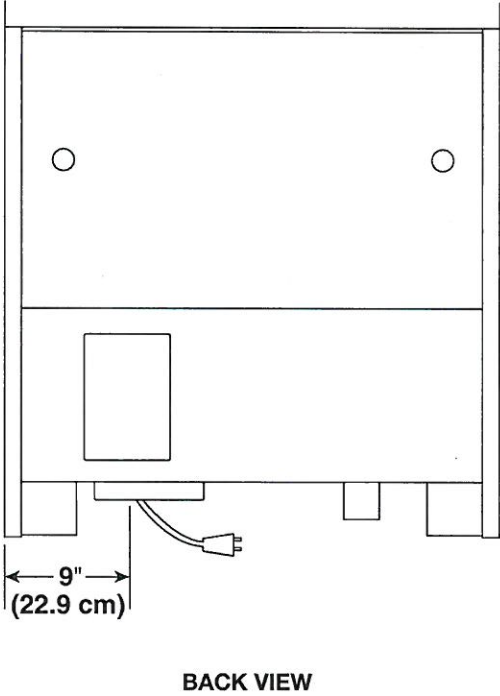
ELECTRIC REQUIREMENTS CHECKLIST

- ☐ A 240 V, 60 Hz, fused, grounded circuit is required.
- ☐ For 30" (76.2 cm) and 36" (91.4 cm) ranges, use a 40 A circuit.
- ☐ For 48" (121.9 cm) ranges, use a 50 A circuit.
- ☐ A dedicated circuit is recommended.

RECOMMENDED ELECTRICAL ZONE



WIDTH TO ELECTRICAL CONDUIT



NOTE: If you have questions about your electrical supply, call a licenced, qualified electrician.

IMPORTANT: Dimensional specifications are provided for planning purposes only.
Do not make any cutouts based on this information. Refer to the Installation Guide before selecting cabinetry, verifying electrical/gas connections, making cutouts or beginning installation.
All KitchenAid® appliances are appropriately UL, CUL or CSA approved.



PV-117 
September 23, 2020

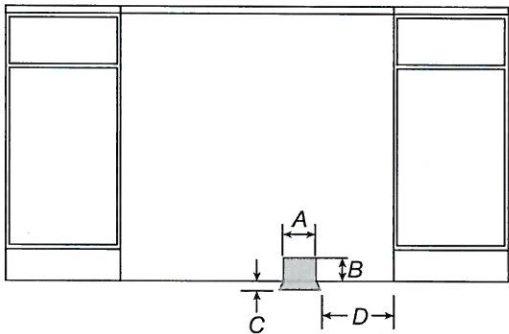
DIMENSIONS

COMMERCIAL-STYLE RANGES

GAS REQUIREMENTS

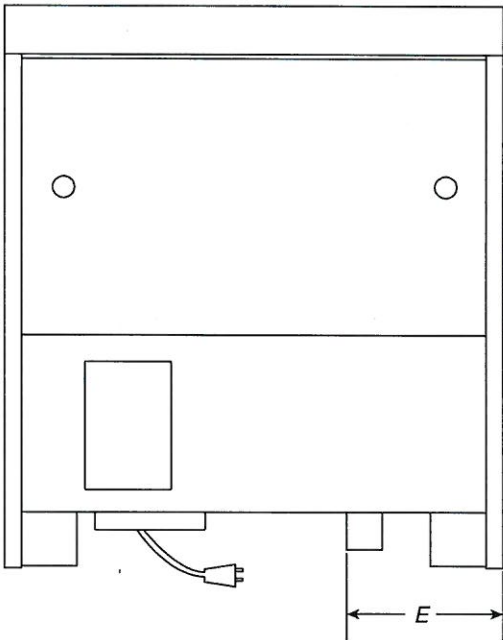
MODEL #	30" (76.2 cm) RANGES DUAL-FUEL/GAS KFDC500J/KFGC500J		36" (91.4 cm) RANGES DUAL-FUEL/GAS KFDC506J/KFGC506J		48" (121.9 cm) RANGES DUAL-FUEL/GAS KFDC558J/KFGC558J	
	in	cm	in	cm	in	cm
Gas Opening Width (A)	6	15.2	14	35.6	24	61
Gas Opening Height (B)	3	7.6	3	7.6	3	7.6
Gas Opening Depth (C)	5	12.7	5	12.7	5	12.7
Distance from Side Cabinet to Gas Opening (D)	9	22.9	9	22.9	9	22.9
Width to Gas Inlet (E)	12¾	32.4	12¾	32.4	12¾	32.4

RECOMMENDED GAS ZONE



FRONT VIEW

WIDTH TO GAS INLET



BACK VIEW

NOTE: If you have questions about your gas supply, call a licenced, qualified service technician.

IMPORTANT: Dimensional specifications are provided for planning purposes only.
Do not make any cutouts based on this information. Refer to the Installation Guide before selecting cabinetry, verifying electrical/gas connections, making cutouts or beginning installation.
All KitchenAid® appliances are appropriately UL, CUL or CSA approved.