



CONSTRUCTION SUMMARY

Lot: 110

Model: 50.05 B KNIGHTSWOOD

Project/Phase: Pine Valley Forevergreen / 1

OPT. PART W/ BSMT SERVICE STAIR

APPLIANCES

Invoice	Qty.	Description
2292	1	APPLIANCE SPECIFICATIONS ATTACHED - SIGNED
30Sep20 NoCat		

CERAMIC

Invoice	Qty.	Description
2292	1	***REVISED LAYOUT*** MAIN FLOOR POWDER ROOM: REVISE LAYOUT TO BECOME SPICE KITCHEN COMPLETE WITH CHIMNEY HOOD FAN, COUNTER PLUG, 220V ELECTRICAL FOR RANGE, CABINETRY, GRANITE COUNTER, POCKET DOORS - SEE PLAN FOR LAYOUT. BASED ON STANDARD FINISHES
30Sep20 NoCat		
2292	1	.ENSUITE 2: REPLACE STANDARD TUB TO FRAMELESS GLASS SHOWER ENCLOSURE WITH GLASS SHOWER DOOR - COMPLETE WITH BUILDERS STANDARD OFFERINGS
30Sep20 NoCat		

CROWN MOULDING

Invoice	Qty.	Description
2292	1	.GREAT ROOM - OPT. COFFERED CEILING AS PER PLAN
30Sep20 NoCat		
2292	1	.LIBRARY - OPT. COFFERED CEILING AS PER PLAN
30Sep20 NoCat		

DRYWALL

Invoice	Qty.	Description
2292	19	.2ND FLOOR: INCREASE HEIGHT OF DOOR TO 8FT SECOND FLOOR - PER DOOR
30Sep20 NoCat		
2292	1	.GREAT ROOM - OPT. COFFERED CEILING AS PER PLAN
30Sep20 NoCat		
2292	1	.LIBRARY - OPT. COFFERED CEILING AS PER PLAN
30Sep20 NoCat		
2292	1	.MASTER BEDROOM - OPT. 10 FOOT TRAY CEILING AS PER PLAN
30Sep20 NoCat		
2292	1	***CUSTOM LAYOUT*** REVISE LAYOUT OF POWDER ROOM TO MAKE SPACE FOR SPICE KITCHEN - POWDER ROOM TO BE COMPLETE WITH STANDARD TOILET AND *PEDESTAL SINK*
30Sep20 NoCat		
2292	1	***REVISED LAYOUT*** MAIN FLOOR POWDER ROOM: REVISE LAYOUT TO BECOME SPICE KITCHEN COMPLETE WITH CHIMNEY HOOD FAN, COUNTER PLUG, 220V ELECTRICAL FOR RANGE, CABINETRY, GRANITE COUNTER, POCKET DOORS - SEE PLAN FOR LAYOUT. BASED ON STANDARD FINISHES
30Sep20 NoCat		



CONSTRUCTION SUMMARY

OPT. PART W/ BSMT SERVICE STAIR

Lot: 110  
Model: 50.05 B KNIGHTSWOOD  
Project/Phase: Pine Valley Forevergreen / 1

ELECTRICAL

Invoice	Qty.	Description
2292 72,281 30Sep20	1	.GREAT ROOM: INTERIOR WALL OUTLET: ADDITIONAL 110V WALL INTERIOR RECEPTACLE ON EXISTING CIRCUIT FOR WALL MOUNTED TV - LOCATE APPROX. 66" A.F.F. ABOVE FIREPLACE
2292 72,303 30Sep20	1	.KITCHEN: FIXTURE: UNDER CABINET FLUORESCENT LIGHT FIXTURES - DOES NOT INCLUDE (AND REQUIRES) LIGHT VALANCE
2292 72,307 30Sep20	1	.KITCHEN: FIXTURE: RELOCATE STANDARD CEILING MOUNT FIXTURE - LOCATE APPROX CENTER ABOVE ISLAND
2292 72,289 30Sep20	6	.KITCHEN: 4" E/S LED INTERIOR POT LIGHT - GROUND FLOOR - EACH  INCLUDED IN APS
2292 72,282 30Sep20	1	.KITCHEN: ADDITIONAL 220V RECEPTACLE ON A SEPARATE CIRCUIT - FOR BUILT-IN WALL OVEN COMBO OVEN/MICRO - APPLIANCE NOT INCLUDED - DOES NOT INCLUDE BREAKER THAT IS TO BE INSTALLED BY LICENSED ELECTRICIAN AND ARRANGED BY HOMEOWNER AFTER CLOSING
2292  30Sep20 NoCat	1	.***REVISED LAYOUT*** MAIN FLOOR POWDER ROOM: REVISE LAYOUT TO BECOME SPICE KITCHEN COMPLETE WITH CHIMNEY HOOD FAN, COUNTER PLUG, 220V ELECTRICAL FOR RANGE, CABINETRY, GRANITE COUNTER, POCKET DOORS - SEE PLAN FOR LAYOUT. BASED ON STANDARD FINISHES
2292  30Sep20 NoCat	1	.ENSUITE 2: REPLACE STANDARD TUB TO FRAMELESS GLASS SHOWER ENCLOSURE WITH GLASS SHOWER DOOR - COMPLETE WITH BUILDERS STANDARD OFFERINGS



CONSTRUCTION SUMMARY

OPT. PART W/ BSMT SERVICE STAIR

Lot: 110  
Model: 50.05 B KNIGHTSWOOD  
Project/Phase: Pine Valley Forevergreen / 1

FRAMING

Invoice	Qty.	Description
2292 72,644 30Sep20	19	.2ND FLOOR: INCREASE HEIGHT OF DOOR TO 8FT SECOND FLOOR - PER DOOR
2292 72,582 30Sep20	1	.GREAT ROOM - OPT. COFFERED CEILING AS PER PLAN
2292 72,587 30Sep20	1	.LIBRARY - OPT. COFFERED CEILING AS PER PLAN
2292 72,592 30Sep20	1	.MASTER BEDROOM - OPT. 10 FOOT TRAY CEILING AS PER PLAN
2292  30Sep20 NoCat	1	***CUSTOM LAYOUT*** REVISE LAYOUT OF POWDER ROOM TO MAKE SPACE FOR SPICE KITCHEN - POWDER ROOM TO BE COMPLETE WITH STANDARD TOILET AND *PEDESTAL SINK*
2292  30Sep20 NoCat	1	***REVISED LAYOUT*** MAIN FLOOR POWDER ROOM: REVISE LAYOUT TO BECOME SPICE KITCHEN COMPLETE WITH CHIMNEY HOOD FAN, COUNTER PLUG, 220V ELECTRICAL FOR RANGE, CABINETRY, GRANITE COUNTER, POCKET DOORS - SEE PLAN FOR LAYOUT. BASED ON STANDARD FINISHES
2292 72,350 30Sep20	1	.ENSUITE 2: REPLACE STANDARD TUB TO FRAMELESS GLASS SHOWER ENCLOSURE WITH GLASS SHOWER DOOR - COMPLETE WITH BUILDERS STANDARD OFFERINGS
2292  30Sep20 NoCat	1	.CABANA: ADDITIONAL SINGLE DOOR 800 SERIES COMPLETE WITH BUILDERS STANDARD OFFERINGS
2292  30Sep20 NoCat	1	.KITCHEN - UPGRADE TO 8" DUCT ( INTERIOR WALL) IN LIEU OF STANDARD OFFERING

GARAGE DOORS

Invoice	Qty.	Description
2292 72,324 30Sep20	2	.GARAGE DOOR OPENER (CHAMBERLAIN BELT DRIVE) - WITH 1 REMOTE - PRICE IS PER DOOR

GLASS AND MIRROR

Invoice	Qty.	Description
2292  30Sep20 NoCat	1	.ENSUITE 2: REPLACE STANDARD TUB TO FRAMELESS GLASS SHOWER ENCLOSURE WITH GLASS SHOWER DOOR - COMPLETE WITH BUILDERS STANDARD OFFERINGS



CONSTRUCTION SUMMARY

Lot: 110

Model: 50.05 B KNIGHTSWOOD

Project/Phase: Pine Valley Forevergreen / 1

OPT. PART W/ BSMT SERVICE STAIR

GRANITE MARBLE QUARTZ

Invoice	Qty.	Description
2292  30Sep20 NoCat	1	.***REVISED LAYOUT*** MAIN FLOOR POWDER ROOM: REVISE LAYOUT TO BECOME SPICE KITCHEN COMPLETE WITH CHIMNEY HOOD FAN, COUNTER PLUG, 220V ELECTRICAL FOR RANGE, CABINETRY, GRANITE COUNTER, POCKET DOORS - SEE PLAN FOR LAYOUT. BASED ON STANDARD FINISHES

HVAC

Invoice	Qty.	Description
2292 72,218 30Sep20	1	.KITCHEN - UPGRADE TO 8" DUCT ( INTERIOR WALL) IN LIEU OF STANDARD OFFERING
2292  30Sep20 NoCat	1	.***REVISED LAYOUT*** MAIN FLOOR POWDER ROOM: REVISE LAYOUT TO BECOME SPICE KITCHEN COMPLETE WITH CHIMNEY HOOD FAN, COUNTER PLUG, 220V ELECTRICAL FOR RANGE, CABINETRY, GRANITE COUNTER, POCKET DOORS - SEE PLAN FOR LAYOUT. BASED ON STANDARD FINISHES

INTERIOR TRIM AND DOORS

Invoice	Qty.	Description
2292  30Sep20 NoCat	19	.2ND FLOOR: INCREASE HEIGHT OF DOOR TO 8FT SECOND FLOOR - PER DOOR
2292  30Sep20 NoCat	1	.GREAT ROOM - OPT. COFFERED CEILING AS PER PLAN
2292  30Sep20 NoCat	1	.LIBRARY - OPT. COFFERED CEILING AS PER PLAN
2292  30Sep20 NoCat	1	.MASTER BEDROOM - OPT. 10 FOOT TRAY CEILING AS PER PLAN
2292  30Sep20 NoCat	1	.***CUSTOM LAYOUT*** REVISE LAYOUT OF POWDER ROOM TO MAKE SPACE FOR SPICE KITCHEN - POWDER ROOM TO BE COMPLETE WITH STANDARD TOILET AND *PEDESTAL SINK*
2292  30Sep20 NoCat	1	.***REVISED LAYOUT*** MAIN FLOOR POWDER ROOM: REVISE LAYOUT TO BECOME SPICE KITCHEN COMPLETE WITH CHIMNEY HOOD FAN, COUNTER PLUG, 220V ELECTRICAL FOR RANGE, CABINETRY, GRANITE COUNTER, POCKET DOORS - SEE PLAN FOR LAYOUT. BASED ON STANDARD FINISHES
2292  30Sep20 NoCat	1	.ENSUITE 2: REPLACE STANDARD TUB TO FRAMELESS GLASS SHOWER ENCLOSURE WITH GLASS SHOWER DOOR - COMPLETE WITH BUILDERS STANDARD OFFERINGS





CONSTRUCTION SUMMARY

OPT. PART W/ BSMT SERVICE STAIR

Lot: 110  
Model: 50.05 B KNIGHTSWOOD  
Project/Phase: Pine Valley Forevergreen / 1

KITCHEN AND BATH CABINETRY

Invoice	Qty.	Description
2292  30Sep20 NoCat	1	.***REVISED LAYOUT*** MAIN FLOOR POWDER ROOM: REVISE LAYOUT TO BECOME SPICE KITCHEN COMPLETE WITH CHIMNEY HOOD FAN, COUNTER PLUG, 220V ELECTRICAL FOR RANGE, CABINETRY, GRANITE COUNTER, POCKET DOORS - SEE PLAN FOR LAYOUT. BASED ON STANDARD FINISHES
2292  30Sep20 NoCat	1	.KITCHEN - UPGRADE TO 8" DUCT ( INTERIOR WALL) IN LIEU OF STANDARD OFFERING

NETWORK AND WIRING

Invoice	Qty.	Description
2292 72,260 30Sep20	1	CONDUIT PIPE - FROM ATTIC TO BASEMENT - BASEMENT NEAR ELECTRICAL PANEL TO APPROX. CENTER OF ATTIC

PAINT

Invoice	Qty.	Description
2292  30Sep20 NoCat	19	.2ND FLOOR: INCREASE HEIGHT OF DOOR TO 8FT SECOND FLOOR - PER DOOR
2292  30Sep20 NoCat	1	.GREAT ROOM - OPT. COFFERED CEILING AS PER PLAN
2292  30Sep20 NoCat	1	.LIBRARY - OPT. COFFERED CEILING AS PER PLAN
2292  30Sep20 NoCat	1	.MASTER BEDROOM - OPT. 10 FOOT TRAY CEILING AS PER PLAN
2292  30Sep20 NoCat	1	.***CUSTOM LAYOUT*** REVISE LAYOUT OF POWDER ROOM TO MAKE SPACE FOR SPICE KITCHEN - POWDER ROOM TO BE COMPLETE WITH STANDARD TOILET AND *PEDESTAL SINK*
2292  30Sep20 NoCat	1	.***REVISED LAYOUT*** MAIN FLOOR POWDER ROOM: REVISE LAYOUT TO BECOME SPICE KITCHEN COMPLETE WITH CHIMNEY HOOD FAN, COUNTER PLUG, 220V ELECTRICAL FOR RANGE, CABINETRY, GRANITE COUNTER, POCKET DOORS - SEE PLAN FOR LAYOUT. BASED ON STANDARD FINISHES

OPT. PART W/ BSMT SERVICE STAIR

Lot: 110  
Model: 50.05 B KNIGHTSWOOD  
Project/Phase: Pine Valley Forevergreen / 1

PLUMBING

Invoice	Qty.	Description
2292 72,346 30Sep20	1	KITCHEN: ROUGH-IN FOR KITCHEN POT FILLER (FIXTURE NOT INCLUDED)
2292  30Sep20 NoCat	1	.***REVISED LAYOUT*** MAIN FLOOR POWDER ROOM: REVISE LAYOUT TO BECOME SPICE KITCHEN COMPLETE WITH CHIMNEY HOOD FAN, COUNTER PLUG, 220V ELECTRICAL FOR RANGE, CABINETRY, GRANITE COUNTER, POCKET DOORS - SEE PLAN FOR LAYOUT. BASED ON STANDARD FINISHES
2292  30Sep20 NoCat	1	.ENSUITE 2: REPLACE STANDARD TUB TO FRAMELESS GLASS SHOWER ENCLOSURE WITH GLASS SHOWER DOOR - COMPLETE WITH BUILDERS STANDARD OFFERINGS
2292  30Sep20 NoCat	1	.***CUSTOM LAYOUT*** REVISE LAYOUT OF POWDER ROOM TO MAKE SPACE FOR SPICE KITCHEN - POWDER ROOM TO BE COMPLETE WITH STANDARD TOILET AND *PEDESTAL SINK*

WINDOWS AND DOORS

Invoice	Qty.	Description
2292 72,638 30Sep20	1	.CABANA: ADDITIONAL SINGLE DOOR 800 SERIES COMPLETE WITH BUILDERS STANDARD OFFERINGS

SCHEDULE 'F'

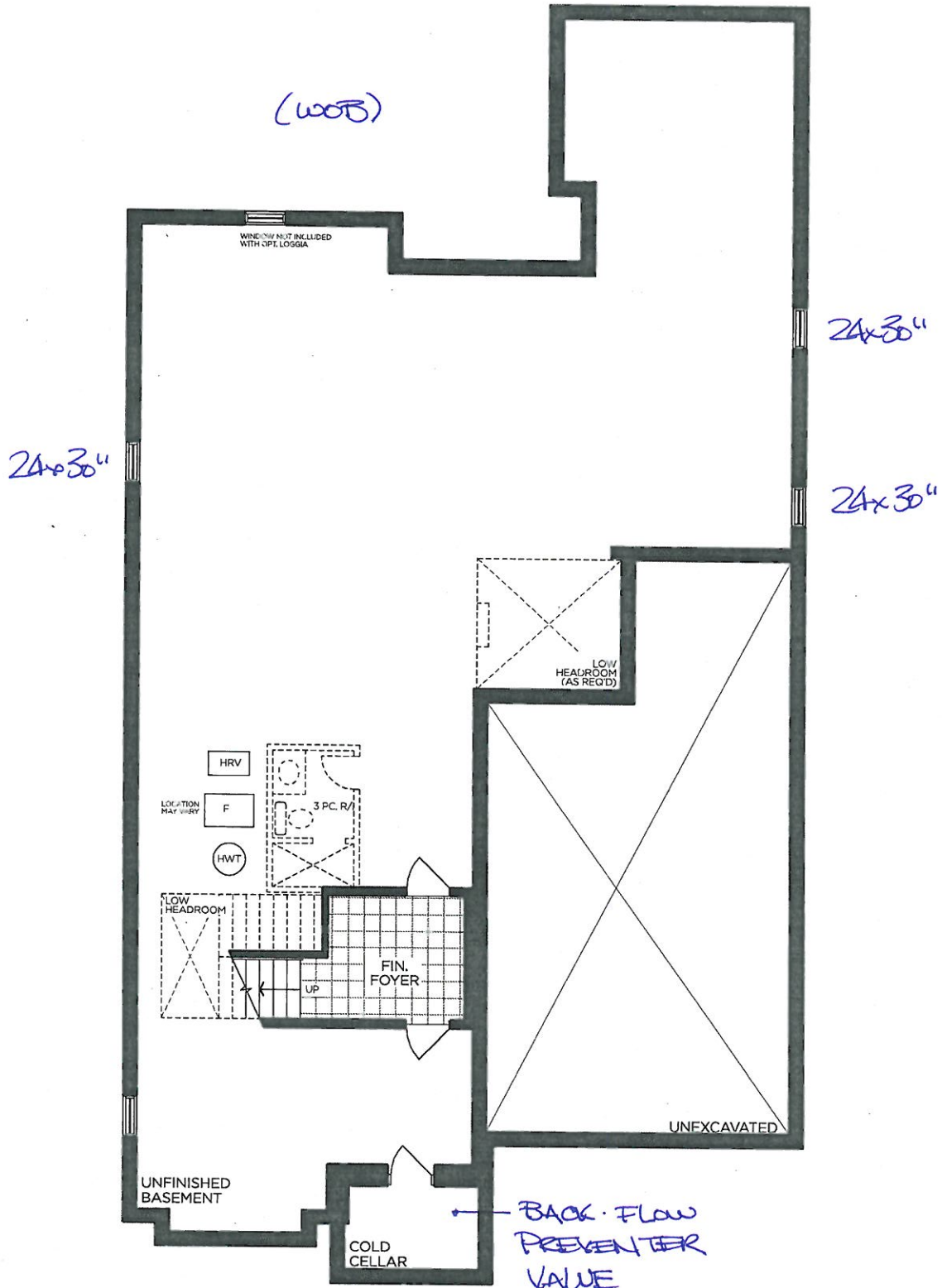


71-110  
APRIL 21 2020  
*see attached*

# The Knightswood

## 50' SERIES

Elevation A • 4,445 sq.ft.  
4,475 sq.ft. Opt. Elevator / 4,575 sq.ft. Opt. Service Stairs  
Elevation B • 4,440 sq.ft.  
4,475 sq.ft. Opt. Elevator / 4,575 sq.ft. Opt. Service Stairs  
Elevation C • 4,525 sq.ft.  
4,560 sq.ft. Opt. Elevator / 4,660 sq.ft. Opt. Service Stairs



BASEMENT | ELEV. A

VENDOR

PURCHASER

PURCHASER

**GOLDPARK**  
WORTH MORE™

Prices, figures, illustrations, sizes, features and finishes are subject to change without notice. Areas and dimensions are approximate and actual usable floor space may vary from the stated area. Layout may be reverse of the unit purchased. E. & O.E. 5005

SCHEDULE 'F'

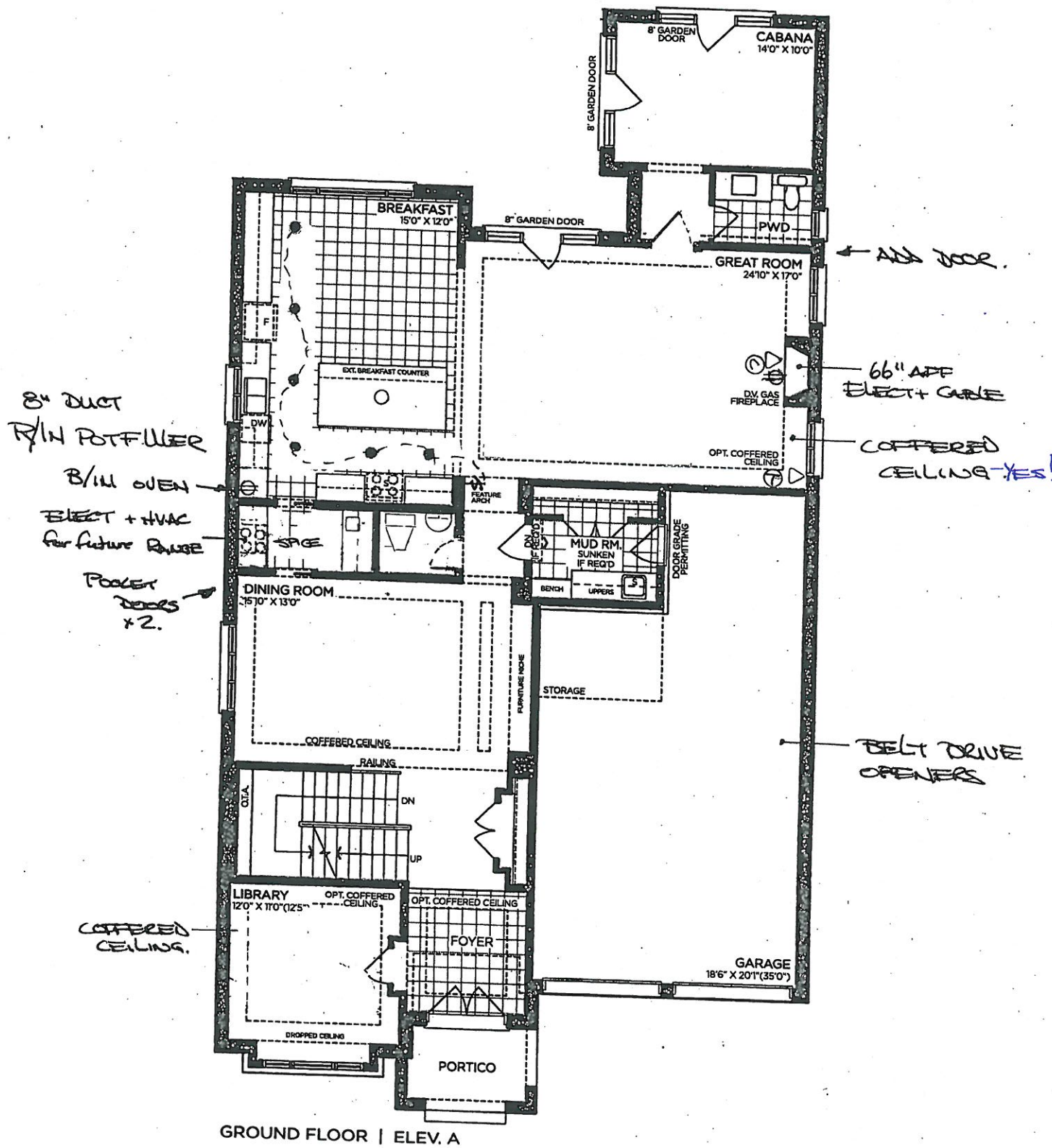


PV-110 *see attached*  
April 21 2020

# The Knightswood

## 50' SERIES

Elevation A • 4,445 sq.ft.  
4,475 sq.ft. Opt. Elevator / 4,575 sq.ft. Opt. Service Stairs  
→ Elevation B • 4,440 sq.ft.  
4,475 sq.ft. Opt. Elevator / 4,575 sq.ft. Opt. Service Stairs  
Elevation C • 4,525 sq.ft.  
4,560 sq.ft. Opt. Elevator / 4,660 sq.ft. Opt. Service Stairs



GROUND FLOOR | ELEV. A

VENDOR

PURCHASER

PURCHASER

**GOLDPARK**  
WORTH MORE™

Prices, figures, illustrations, sizes, features and finishes are subject to change without notice. Areas and dimensions are approximate and actual usable floor space may vary from the stated area. Layout may be reverse of the unit purchased. E. & O.E. 5005



# SCHEDULE 'F'

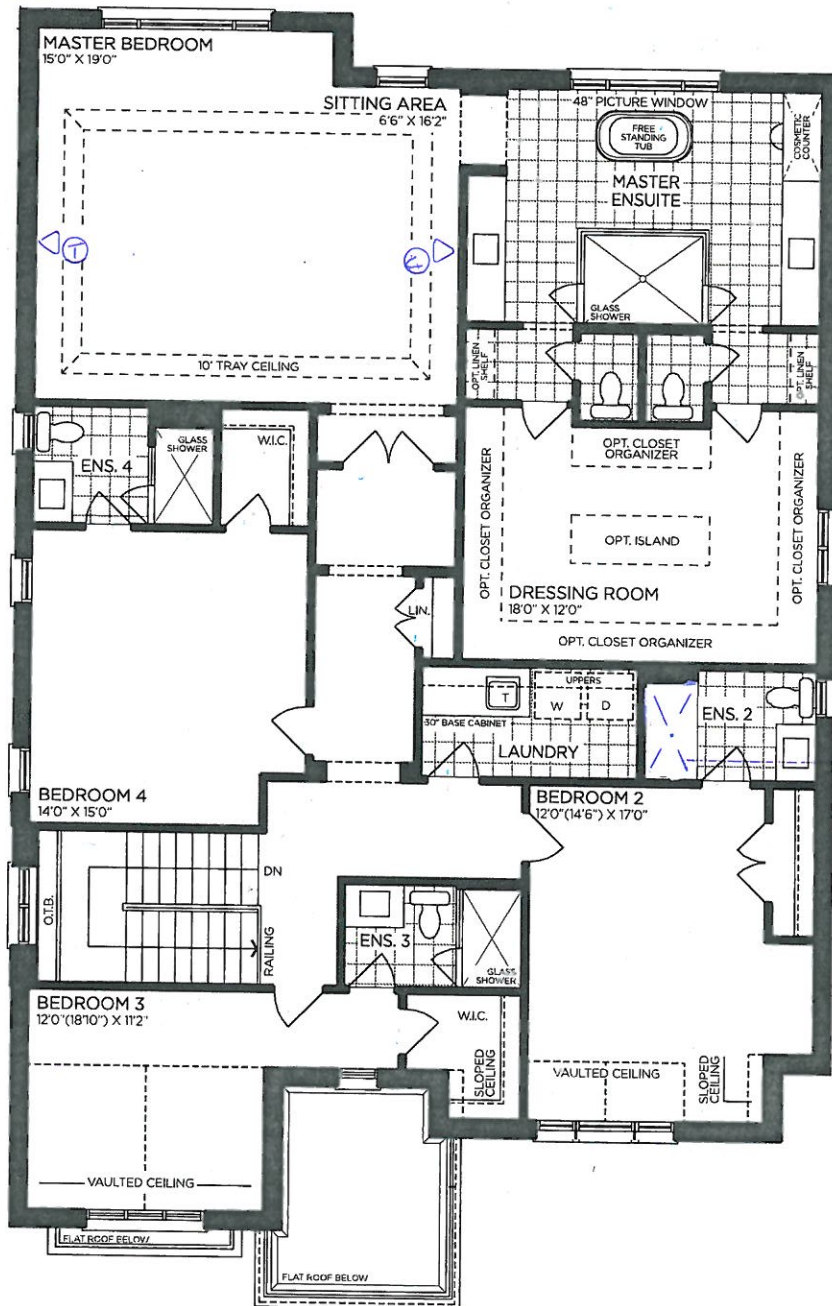


see attached  
 PV-110  
 April 21, 2020

## The Knightswood 50' SERIES

Elevation A • 4,445 sq.ft.  
 4,475 sq.ft. Opt. Elevator / 4,575 sq.ft. Opt. Service Stairs  
 Elevation B • 4,440 sq.ft.  
 4,475 sq.ft. Opt. Elevator / 4,575 sq.ft. Opt. Service Stairs  
 Elevation C • 4,525 sq.ft.  
 4,560 sq.ft. Opt. Elevator / 4,660 sq.ft. Opt. Service Stairs

8' Doors  
 on 2nd floor



CHANGE TO  
 STANDING  
 SHOWER.

SECOND FLOOR | ELEV. A

VENDOR

PURCHASER

PURCHASER

**GOLDPARK**  
 WORTH MORE™

Prices, figures, illustrations, sizes, features and finishes are subject to change without notice. Areas and dimensions are approximate and actual usable floor space may vary from the stated area. Layout may be reverse of the unit purchased. E. & O.E. 5005

SCHEDULE 'F'



The  
Knightswood  
50' SERIES

Elevation A • 4,445 sq.ft.

4,475 sq.ft. Opt. Elevator / 4,575 sq.ft. Opt. Service Stairs

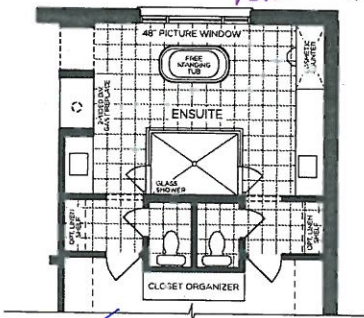
→ Elevation B • 4,440 sq.ft.

4,475 sq.ft. Opt. Elevator / 4,575 sq.ft. Opt. Service Stairs

Elevation C • 4,525 sq.ft.

4,560 sq.ft. Opt. Elevator / 4,660 sq.ft. Opt. Service Stairs

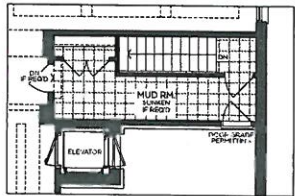
PV-110  
MAR 20 2020  
APRIL 21 2020  
see attached  
see attached  
see attached



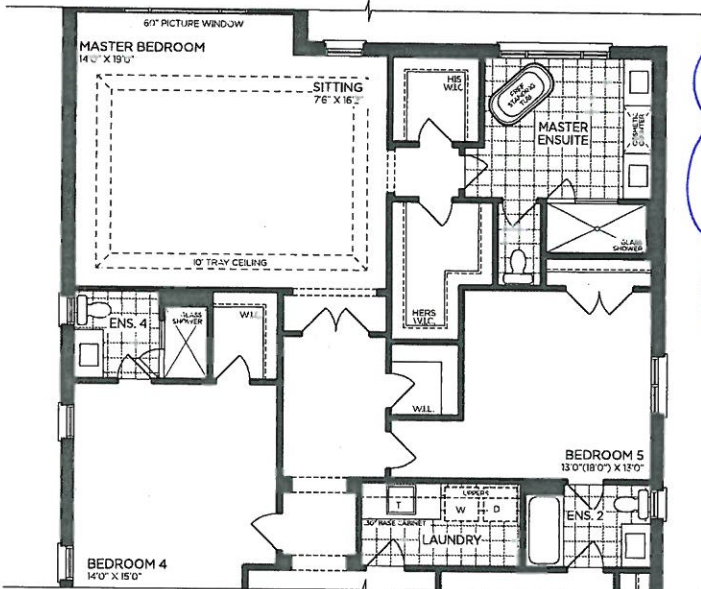
PART. OPT. ENSUITE LAYOUT



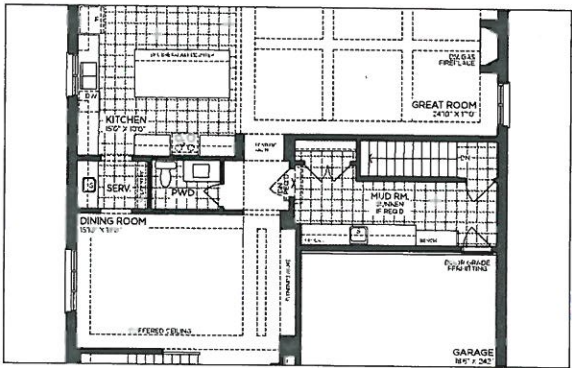
PART. OPT. WETBAR SITTING AREA



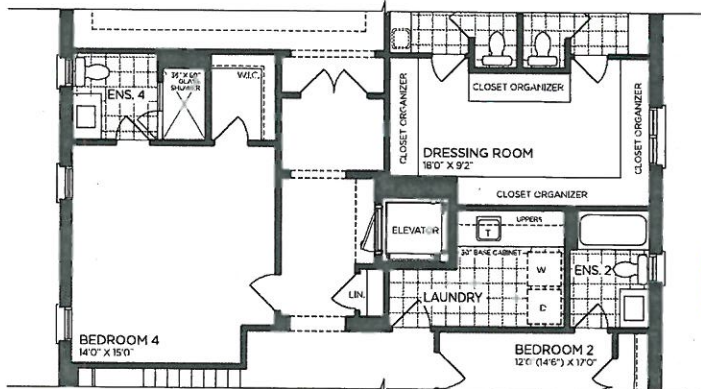
OPT. PART. GROUND FLOOR SERVICE STAIR W/ ELEVATOR | ELEV. A



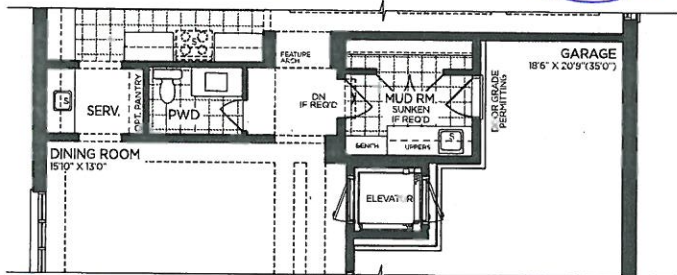
PART. OPT. SECOND FLOOR | ELEV. A (5 BEDROOMS)



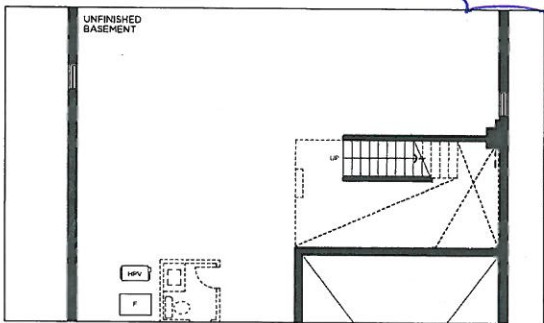
OPT. PART. GROUND FLOOR W/ SERVICE STAIR | ELEV. A



PART. OPT. SECOND FLOOR | ELEV. A (ELEVATOR)



PART. OPT. GROUND FLOOR | ELEV. A (ELEVATOR)



OPT. PART. BASEMENT W/ SERVICE STAIR | ELEV. A

VENDOR

PURCHASER

PURCHASER

GOLDPARK  
WORTH MORE™

Prices, figures, illustrations, sizes, features and finishes are subject to change without notice. Areas and dimensions are approximate and actual usable floor space may vary from the stated area. Layout may be reverse of the unit purchased. E. & O.E. 5005



SCHEDULE 'F'

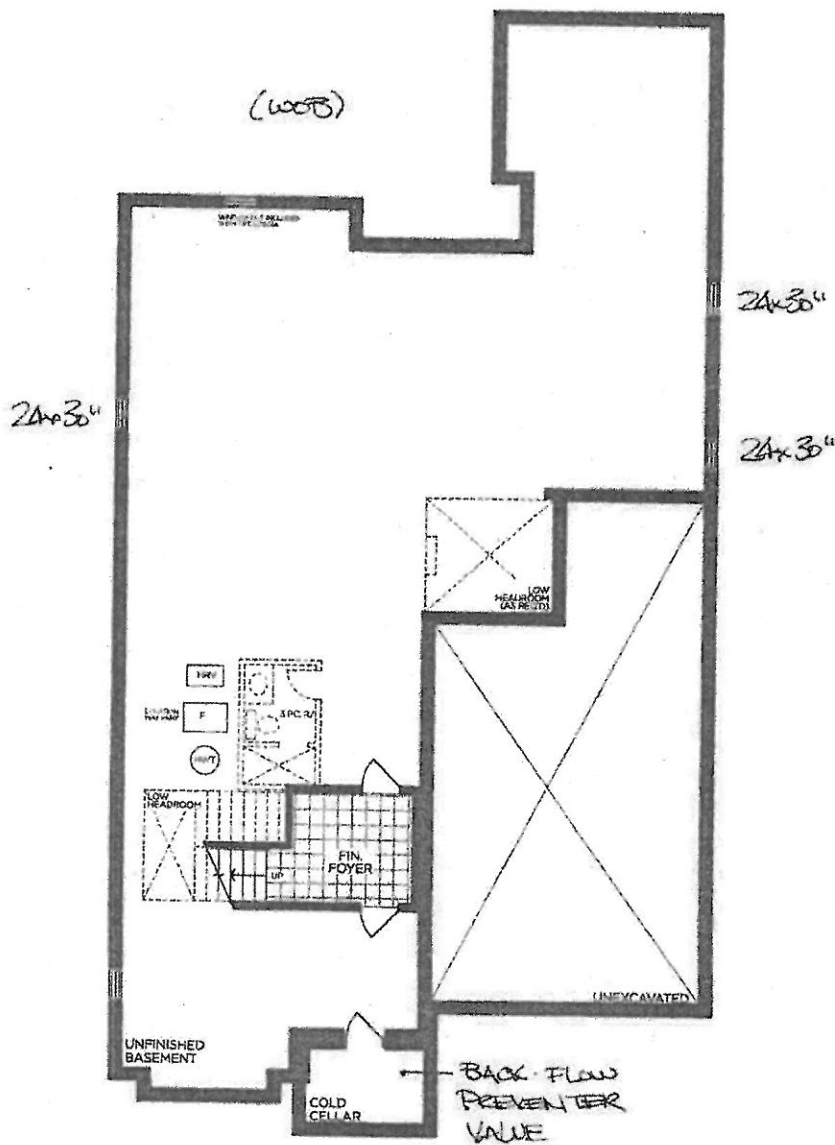


PN-110

APRIL 2, 2020

# The Knightswood 50' SERIES

Elevation A • 4,445 sq.ft.  
4,475 sq.ft. Opt. Elevator / 4,575 sq.ft. Opt. Service Stairs  
Elevation B • 4,440 sq.ft.  
4,475 sq.ft. Opt. Elevator / 4,575 sq.ft. Opt. Service Stairs  
Elevation C • 4,525 sq.ft.  
4,560 sq.ft. Opt. Elevator / 4,660 sq.ft. Opt. Service Stairs



BASEMENT | ELEV. A

VENDOR	
PURCHASER	<i>[Signature]</i>
PURCHASER	

**GOLDPARK**  
WORTH MORE™

Prices, figures, illustrations, sizes, features and finishes are subject to change without notice. Areas and dimensions are approximate and actual usable floor space may vary from the stated area. Layout may be reverse of the unit purchased. E & OE 5005

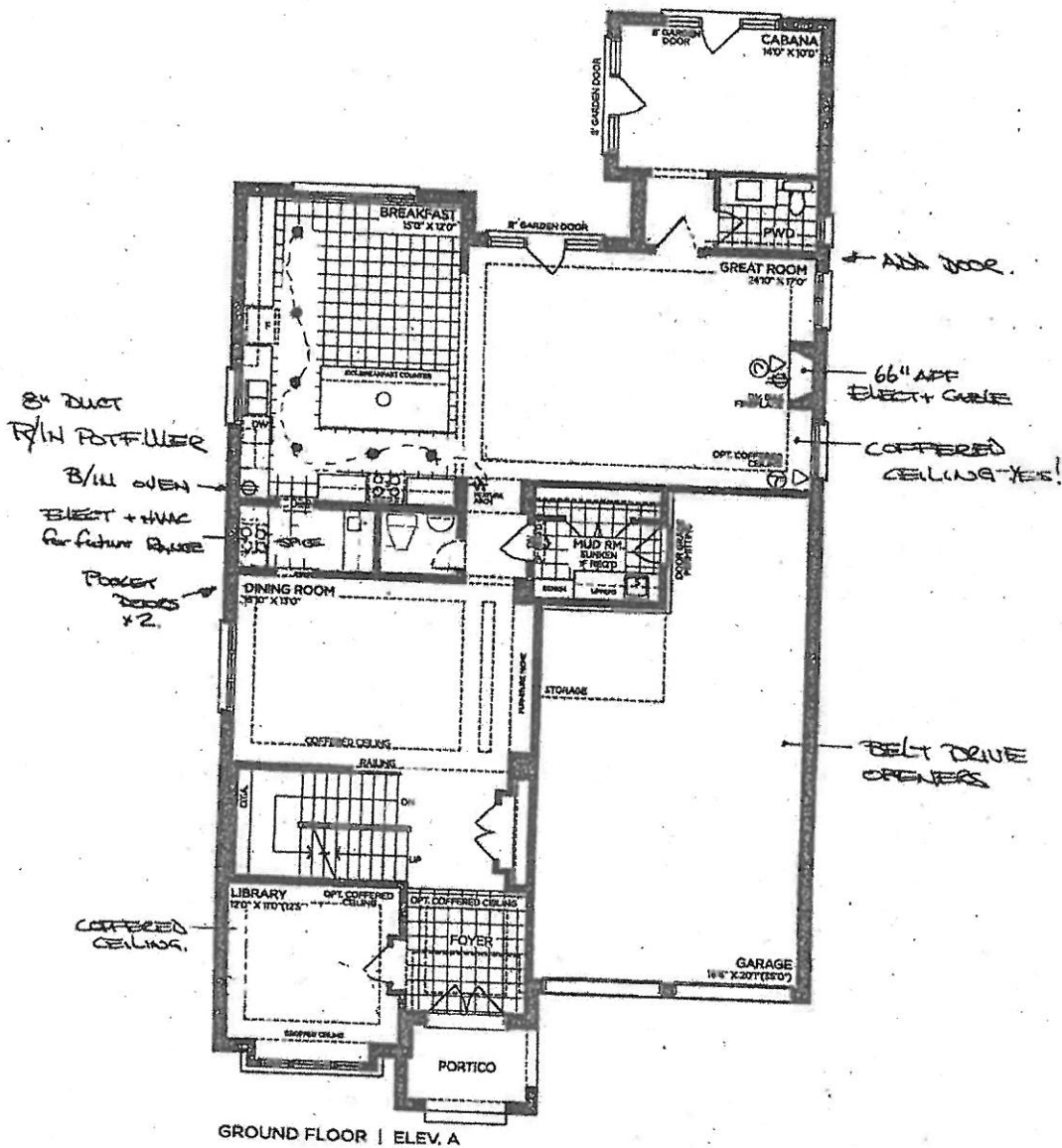
SCHEDULE 'F'



PV-110  
April 2, 2020

The  
Knightswood  
50' SERIES

Elevation A • 4,445 sq.ft.  
4,475 sq.ft. Opt. Elevator / 4,575 sq.ft. Opt. Service Stairs  
Elevation B • 4,440 sq.ft.  
4,475 sq.ft. Opt. Elevator / 4,575 sq.ft. Opt. Service Stairs  
Elevation C • 4,525 sq.ft.  
4,560 sq.ft. Opt. Elevator / 4,660 sq.ft. Opt. Service Stairs



VENDOR  
PURCHASER  
PURCHASER

GOLDPARK  
WORTH MORE

Prices, figures, illustrations, sizes, features and finishes are subject to change without notice. Areas and dimensions are approximate and actual usable floor space may vary from the stated area. Layout may be reverse of the unit purchased. E. & O.E. 5005



SCHEDULE 'F'

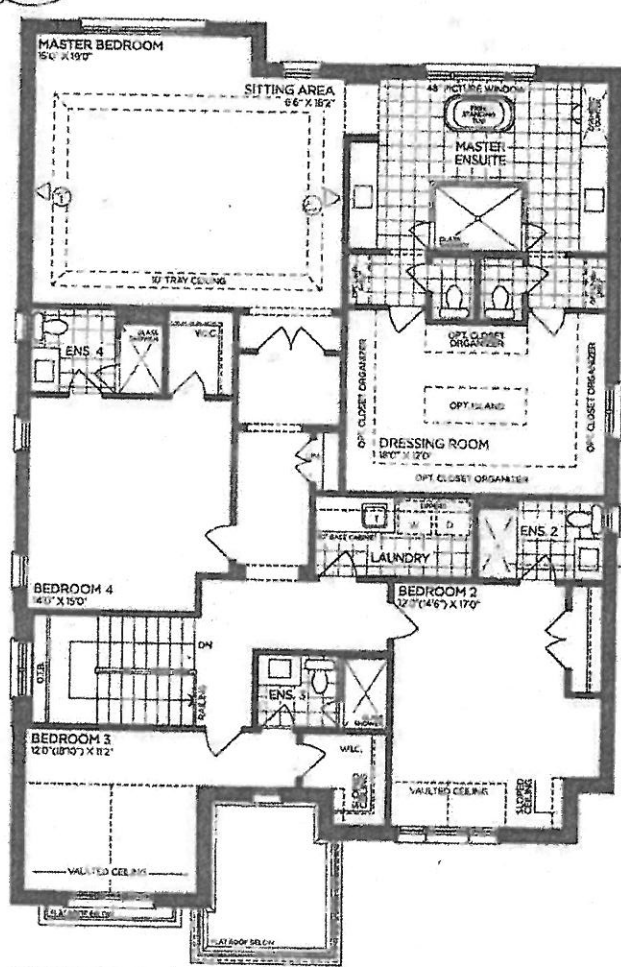


PV-110  
APRIL 21, 2020

The  
Knightswood  
50' SERIES

Elevation A • 4,445 sq.ft.  
4,475 sq.ft. Opt. Elevator / 4,575 sq.ft. Opt. Service Stairs  
Elevation B • 4,440 sq.ft.  
4,475 sq.ft. Opt. Elevator / 4,575 sq.ft. Opt. Service Stairs  
Elevation C • 4,525 sq.ft.  
4,560 sq.ft. Opt. Elevator / 4,660 sq.ft. Opt. Service Stairs

8' doors  
on 2nd floor



CHANGE TO  
STANDING  
SHOWER.

SECOND FLOOR | ELEV. A

VENDOR \_\_\_\_\_  
PURCHASER Phu  
PURCHASER \_\_\_\_\_

GOLDPARK  
WORTH MORE

Prices, figures, illustrations, sizes, features and finishes are subject to change without notice. Areas and dimensions are approximate and actual usable floor space may vary from the stated area. Layout may be reverse of the unit purchased. E & O.E. 5005

dacor

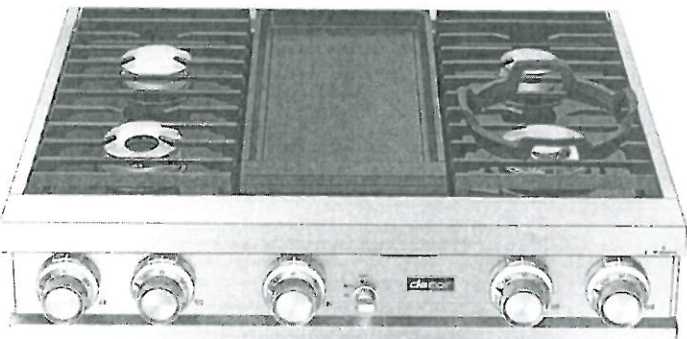
36-INCH GAS RANGETOP

PV-110

Sept 25, 2020

N R

DTT36M974 | MODERNIST COLLECTION



AVAILABLE MODELS

DTT36M974LS	36" Rangetop, Stainless Steel, Natural Gas
DTT36M974PS	36" Rangetop, Stainless Steel, Liquid Propane
DTT36M974HS	36" Rangetop, Stainless Steel, Natural Gas/High Altitude
DTT36M974AS	36" Rangetop, Stainless Steel, Liquid Propane/High Altitude
DTT36M974LM	36" Rangetop, Graphite Stainless Steel, Natural Gas
DTT36M974PM	36" Rangetop, Graphite Stainless Steel, Liquid Propane
DTT36M974HM	36" Rangetop, Graphite Stainless Steel, Natural Gas/High Altitude
DTT36M974AM	36" Rangetop, Graphite Stainless Steel, Liquid Propane/High Altitude

FEATURES & BENEFITS

- 4 Dual-Stack Sealed Burners • Electric Griddle.
- Powerful 22K BTU and true simmer burners.
- Continuous grates.
- Illumina™ Knobs and Ambient Light.
- Includes brass and black burner caps.
- Available in graphite stainless steel and silver stainless steel finish.

ACCESSORIES (INCLUDED)

- WOK RING
- BRASS BURNER CAPS
- BLACK BURNER CAPS

BURNER PERFORMANCE

TOTAL NUMBER OF COOKTOP BURNERS	4 (BRASS)
RIGHT FRONT (BTU)	22,000 DUAL (SIMMER)
RIGHT REAR (BTU)	9,000 STACK DUAL (SIMMER)
LEFT FRONT (BTU)	18,000 DUAL (SIMMER)
LEFT REAR (BTU)	16,000 DUAL (SIMMER)
SEALED BURNERS	YES

GRIDDLE PERFORMANCE

ELECTRIC	1,400W
----------	--------

CONTROL FEATURES

LED KNOB BACKLIGHTING	YES
LED AMBIENT LIGHTING	YES
LED CONTROL BUTTON	YES
WIFI CONNECT LED	YES
WIFI CONNECT BUTTON	YES
BLUETOOTH CONNECT LED	YES
BLUETOOTH CONNECT BUTTON	YES

ADDITIONAL FEATURES

RE-IGNITION	YES
OIL PAN	YES

INSTALLATION

GAS TYPE	NATURAL GAS/ LIQUID PROPANE
HIGH ALTITUDE AVAILABLE	YES
POWER CORD	YES

TECHNICAL DETAILS

CIRCUIT BREAKER (A)	15
VOLTS (V)	120
FREQUENCY (HZ)	60
ENERGY SOURCE	GAS AND ELECTRIC

DIMENSIONS & WEIGHT

APPLIANCE DIMENSIONS (H X W X D) (IN.)	8" X 36" X 24"
REQUIRED CUTOUT SIZE (W X H) (IN.)	7 3/4" X 36" X 24"

WARRANTY

LIMITED, PARTS AND LABOR	1 YEAR
--------------------------	--------

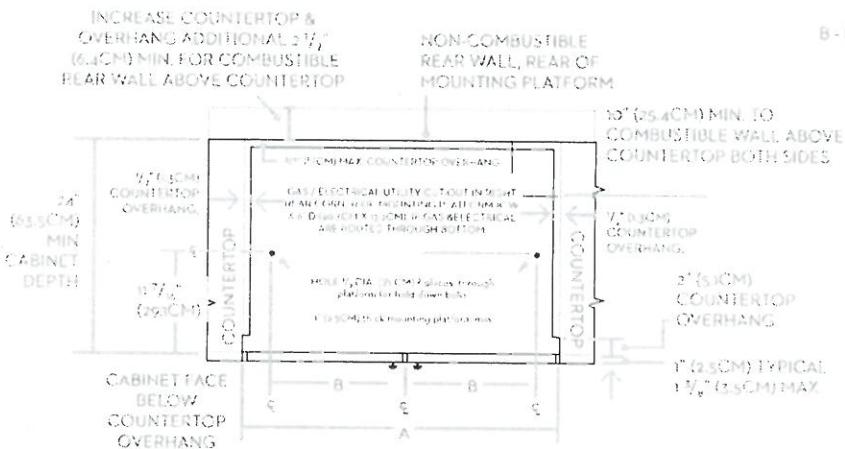
MAIN KITCHEN



36-INCH GAS RANGETOP

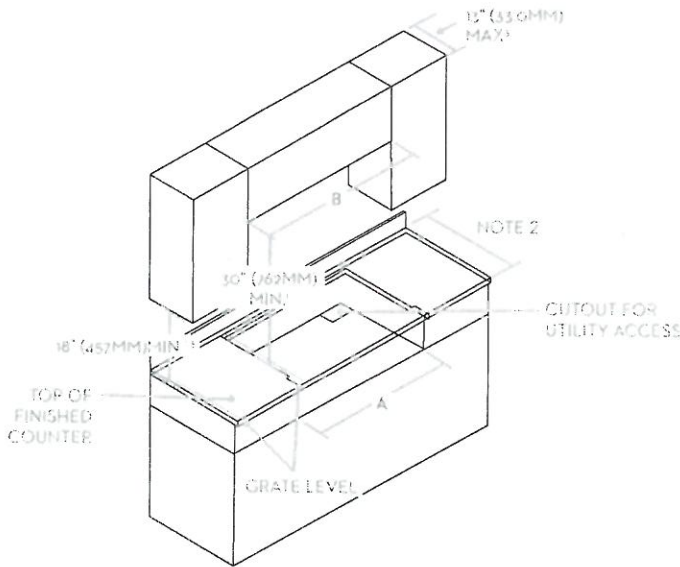
PV-110  
Sept. 25, 2020 **A** **R**

CABINET/COUNTERTOP CUTOUT DIMENSIONS



CABINET/COUNTERTOP CUTOUT DIMENSIONS WITHOUT DOWNDRAFT VENT - TOP VIEW

CLEARANCE DIMENSIONS



NOTE: All vertical clearances must be maintained for a minimum of 18" (457mm) above the cooking surface.

**dacor**

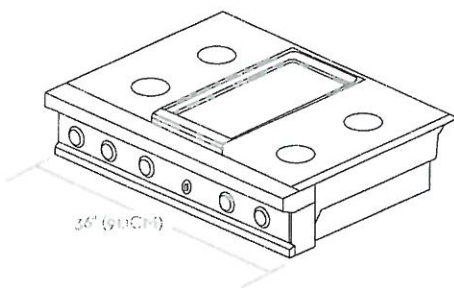
36-INCH GAS RANGETOP

PV-110

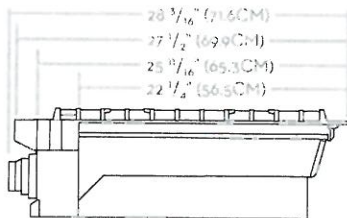
Sept. 25, 2020



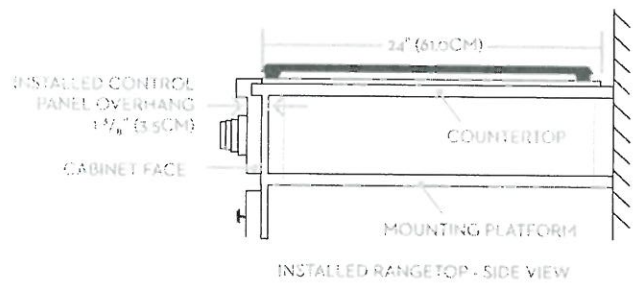
APPLIANCE DIMENSIONS



36" (91.4CM)



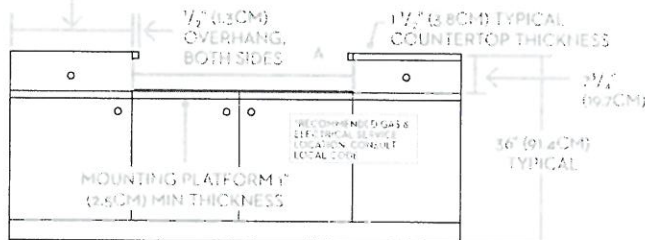
28 3/16" (71.6CM)  
27 1/2" (69.9CM)  
25 9/16" (65.3CM)  
22 1/4" (56.5CM)



INSTALLED RANGETOP - SIDE VIEW

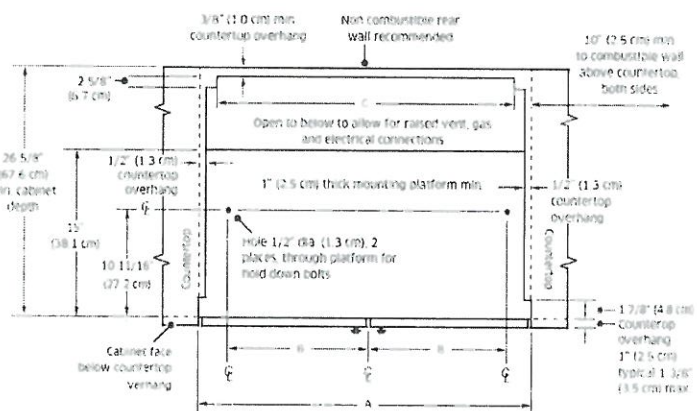
CABINET/COUNTERTOP DIMENSIONS

1/2" (2.5 CM) TO COMBUSTIBLE  
SIDE WALL MIN. BOTH SIDES



CABINET / COUNTERTOP DIMENSIONS - FRONT VIEW

\*NOTE: PRODUCT TOLERANCE +/- 1/16"  
(+/- 1.6MM) UNLESS OTHERWISE NOTED

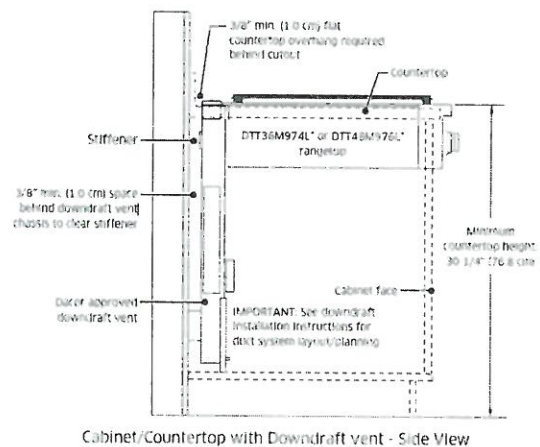


CABINET/COUNTERTOP CUTOUT DIMENSIONS WITHOUT  
DOWNDRAFT VENT - TOP VIEW

**NOTE:** Gas and electrical connections may only be routed through the bottom of the rangetop when installed with  
a downdraft vent.

36"

A - CUTOUT WIDTH	36" (91.4CM)
B - HOLE OFFSET	16 5/8" (42.2CM)
C - DOWNDRAFT VENT CUTOUT	33 1/2" (85.1CM)
APPROVED DOWNDRAFT VENT MODELS	MRV36, MRV36IS



Cabinet/Countertop with Downdraft vent - Side View

CABINET/COUNTERTOP CUTOUT DIMENSIONS WITH  
DOWNDRAFT VENT - SIDE VIEW



dacor

30-INCH COMBI WALL OVEN

PV-110

Sept. 25, 2020

A.N

R

OVEN	
ADDITIONAL MODES	
KEEP WARM	YES
PROOF (LOWER TEMP)	YES
PROOF	YES
PIZZA STONE MODE	YES
DEHYDRATE	YES
GOURMET COOK	YES
INSTANTHEAT™	YES
TEMPERATURE PROBE	YES
TECHNICAL DETAILS	
CIRCUIT BREAKER (A)	40
VOLTS (V)	240 / 208
FREQUENCY (HZ)	60
ENERGY SOURCE	ELECTRIC

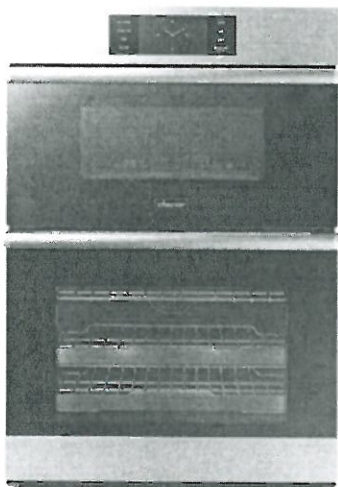
MICROWAVE	
ADDITIONAL MODES	
ADD 30 SECONDS	YES
DEFROST	YES
AUTO COOK (NO SENSOR)	YES
SENSE COOK™ (SENSOR COOK)	YES
CONVECTION SEAR AUTO COOK	YES
HEALTHY FRY (SLIM FRY)	YES
HEALTHY CHOICE (FIT CHOICE)	YES
TECHNICAL DETAILS	
POWER LEVEL	950W

MICROWAVE AND OVEN	
DIMENSIONS & WEIGHT	
APPLIANCE DIMENSIONS (H X W X D) (IN.)	43 3/8" X 29 3/4" X 23 1/8"
REQUIRED CUTOUT SIZE (H X W X D) (IN.)	43 11/16" X 30 1/4" X 24 7/8"
OVEN CAPACITY (CUBIC FEET)	4.8
MICROWAVE CAPACITY (CUBIC FEET)	1.9
WARRANTY	
LIMITED, PARTS AND LABOR	1 YEAR

dacor

30-INCH COMBI WALL OVEN

DOC30M977D | MODERNIST COLLECTION



AVAILABLE MODELS

DOC30M977DM Graphite Stainless Steel  
DOC30M977DS Stainless Steel

FEATURES & BENEFITS

- Available in graphite stainless steel and silver stainless steel.
- Exclusive Four Part Dual Pure Convection Oven - heat, air, baffle and filter to precisely distribute heat for superior cooking results.
- Steam and Convection Oven - the power of steam assist and convection cooking in one.
- The convenience of Microwave Convection.
- Large oven capacity: Microwave 1.9 cu. ft. / Oven 4.8 cu. ft.
- BrightVue™ oven lighting (LED + Halogen Lights).
- RadiantVue™ microwave lighting (LED + Metal Mesh).
- 7" LCD control panel.
- Dacor iQ Kitchen app with integrated Wi-Fi to control and monitor remotely.
- Flush installation.

ACCESSORIES (INCLUDED)

GLIDE RACKS	2
STANDARD RACKS	1
TEMPERATURE PROBE	1
AUTOMATIC WATER RESERVOIR	1
TURN TABLE (OPTITRAY™)	1
MICROWAVE WIRE RACK	1
EVENPLATE™	1

PV-110 N.W.  
Sept 25, 2020

ACCESSORIES (OPTIONAL)

COOKIE SHEETS (SET OF 3)	SKU - ACSM303
--------------------------	---------------

GENERAL PROPERTIES - OVEN

COOKING MODES  
LOWER CAVITY

BAKE - BROIL - CONVECTION  
BAKE - CONVECTION ROAST -  
CONVECTION  
BROIL - FOUR PART PURE  
CONVECTION - PURE  
CONVECTION SEAR - STEAM  
BAKE - STEAM ROAST

GENERAL PROPERTIES - MICROWAVE

COOKING MODES  
UPPER CAVITY

BROIL - CONVECTION SEAR  
(POWER CONVECTION) - SPEED  
CONVECTION  
SEAR - SPEED BROIL

FEATURES

TYPE

COMBINATION MICROWAVE/  
OVEN

SOFT CLOSE DOOR (OVEN)

SOFTSHUT™

LIGHTING

BRIGHTVUE™ AND RADIANTVUE™

ADDITIONAL FEATURES - OVEN

CLEANING TYPE

SELF CLEAN  
GREENCLEAN™

OVEN TYPE

COMBINATION

INSTALLATION

FLUSH

CONTROLS

7" LCD

WIFI

YES (REMOTE ENABLED)

CONVECTION TYPE

FOUR PART DUAL PURE  
CONVECTION WITH MESH FILTER

OVEN COLORS

SILVER STAINLESS STEEL  
GRAPHITE STAINLESS STEEL

OVEN PERFORMANCE

BAKE ELEMENT

3,000W - 8 PASS

BROIL ELEMENT

4,400W - 10 PASS

CONVECTION ELEMENT

1,300W (EACH) - 2,600W TOTAL

STEAM HEATER

500W

CONTROL FEATURES - OVEN

WIFI ON/OFF

YES

LANGUAGE OPTIONS

YES

CLOCK

YES (12 HR/24 HR)

DELAY START

YES

KITCHEN TIMER

YES

SABBATH MODE

YES

LAMP ON/OFF

YES

CHILD LOCK

YES

OPTIONS

YES

ENERGY SAVING

YES

DEMO MODE

YES

CONTROL FEATURES - MICROWAVE

CLOCK YES

(12 HR/24 HR)

KITCHEN TIMER

YES

LAMP ON/OFF

YES

CHILD LOCK

YES

SOUND

YES

WIFI

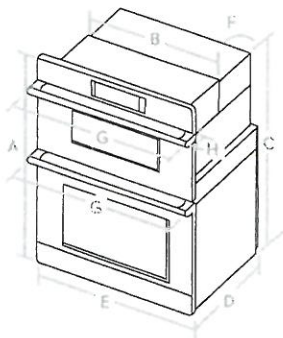
YES (MONITOR ONLY)

dacor

30-INCH COMBI WALL OVEN

PV-110  
September 25, 2020  
A.N. R

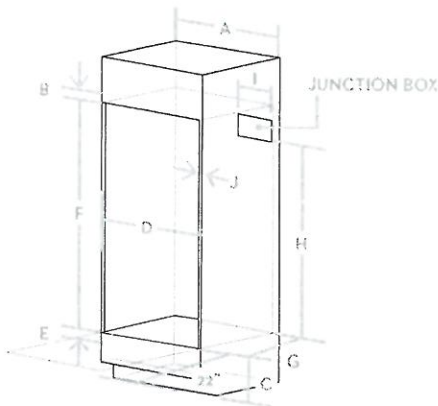
APPLIANCE DIMENSIONS



30"

A	45 3/8" (110.2CM)	OVERALL HEIGHT
B	28 1/2" (72.4CM)	RECESSED WIDTH
C	42" (106.7CM)	RECESSED HEIGHT
D	25 1/8" (64.7CM)	RECESSED DEPTH
E	29 3/4" (75.6CM)	DOOR WIDTH
F	67" (170CM)	CONDUIT LENGTH
G	30" (76.2CM)	OVERALL WIDTH (HANDLE WIDTH)
H	2 1/4" (5.6CM)	HANDLE DEPTH

INSTALLATION CUTOUT DIMENSIONS

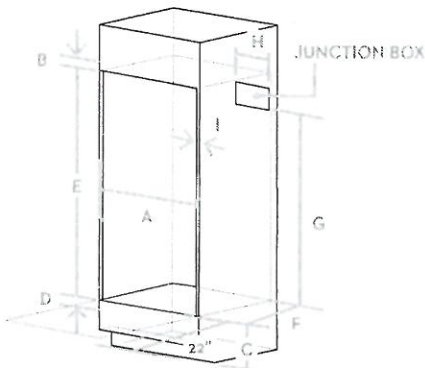


Allow a minimum of 22" for clearance to adjacent corners, drawers, walls, etc. when door is open

STANDARD CABINET DIMENSIONS

A	30" (76.2CM)
B	MIN. 13 1/16" (33.0CM)
C	12" (30.5CM)
D	MIN. 28 5/8" / MAX. 28 3/4" (MIN. 72.7CM / MAX. 73.0CM)
E	MIN. 1" / MAX. 1 1/4" (MIN. 2.5CM / MAX. 3.2CM)
F	42 1/4" (107.3CM)
G	MIN. 25 1/2" (MIN. 64.8CM)
H	MIN. 30 1/2" (MIN. 77.5CM)
I	MAX. 9 1/2" (MAX. 24.1CM) JUNCTION BOX
J	MIN. 1 1/16" (1.75CM) - WOODEN CABINET THICKNESS

INSTALLATION CUTOUT DIMENSIONS



FLUSH CABINET DIMENSIONS

A	MIN. 30 3/16" / MAX. 30 5/16" (MIN. 76.7CM / MAX. 77.0CM)
B	MIN. 13 1/16" (33.0CM)
C	12" (30.5CM)
D	MIN. 1" / MAX. 1 1/4" (MIN. 2.5CM / MAX. 3.2CM)
E	43 11/16" (110.9CM)
F	MIN. 24 1/2" (MIN. 61.9CM)
G	MIN. 30 1/2" (MIN. 77.5CM)
H	MAX. 9 1/2" (MAX. 24.1CM) JUNCTION BOX
I	MIN. 1 1/16" (1.75CM) - WOODEN CABINET THICKNESS

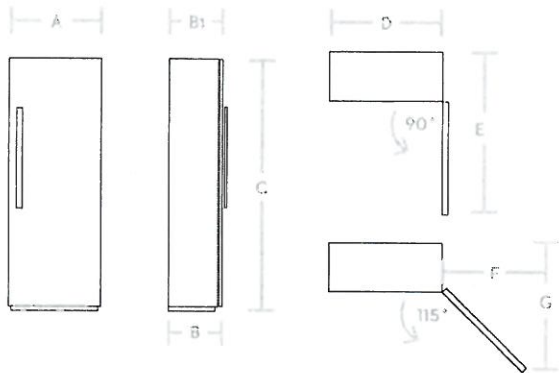




24-INCH REFRIGERATOR COLUMN, RIGHT-HINGE PANEL-READY

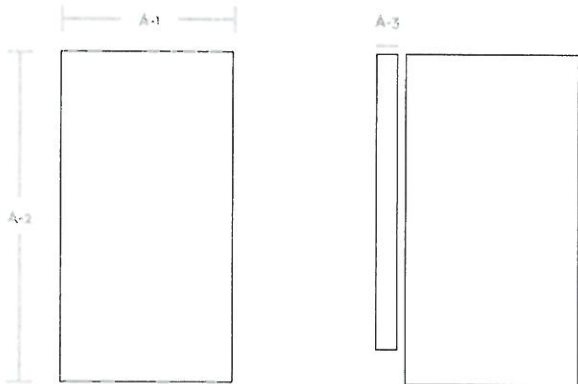
APPLIANCE DIMENSIONS

A (TOTAL WIDTH INCL. PANELS)	23 3/4" (603 MM)
B (TOTAL DEPTH WITH 3/4" PANEL)	25" (635 MM)
C (HEIGHT)	83 3/8" (2118 MM)
D	23 5/8" (600 MM)
E	50 3/4" (1289 MM)
F	13 11/16" (348 MM)
G	49 11/16" (1261 MM)



CUSTOM PANEL DIMENSIONS

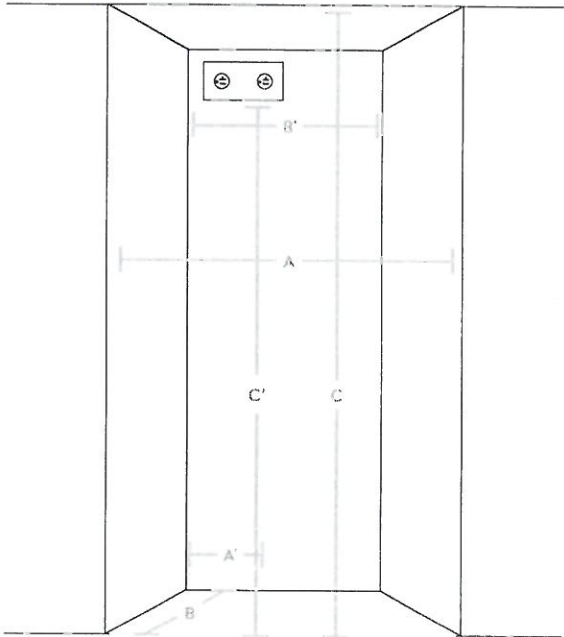
A-1 (WIDTH)	23 3/4" (756 MM)
A-2 (HEIGHT)	79 7/8" (2029 MM)
A-3 (DEPTH)	3/4" (19 MM)
MAX WEIGHT	110.0 LBS. (50KG)



INSTALLATION CUTOUT DIMENSIONS

A (WIDTH)	24" (762 MM)
B (DEPTH)	25" (635 MM)
C (HEIGHT)	84" (2134 MM)
A'	5 1/2" (140 MM)
B'	14" (508 MM)
C'	80" (2032 MM)

PV-110  
Sept. 25, 2020  
A-N R



ACCESSORIES

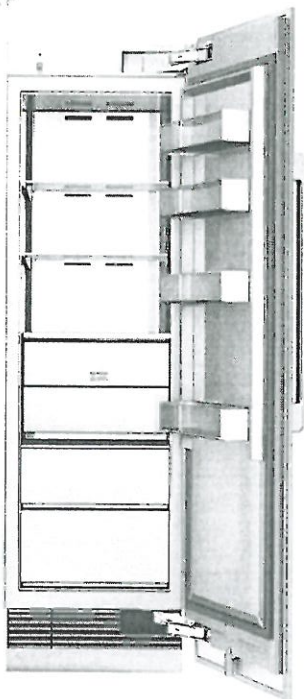
GRAPHITE STAINLESS STEEL - 24" PANEL (RIGHT HINGE)	RAC24DPRHMS
GRAPHITE STAINLESS STEEL - 24" KICK PLATE	RAC24TKBBMS
GRAPHITE STAINLESS STEEL - MODERNIST HANDLE	RAC00MHAAMS
SILVER STAINLESS STEEL - 24" PANEL (RIGHT HINGE)	RAC24DPRHSR
SILVER STAINLESS STEEL - 24" KICK PLATE	RAC24TKBBSR
SILVER STAINLESS STEEL - MODERNIST HANDLE	RAC00MHAASR
SILVER STAINLESS STEEL - DACOR PRO HANDLE	RAC00PHAASR
PAIR INSTALLATION KIT	RAC00CPAAAA
WATER FILTER	RAC00WFAAAA
DEODORIZING FILTER	RAC00DFAAAA



dacor

24-INCH REFRIGERATOR COLUMN,  
RIGHT-HINGE PANEL-READY

DRR24980RAP



PY-110  
Sept. 25, 2020  
AN R



PRODUCT FEATURES

- Full height door with true flush cabinet integration without exposed venting grille
- SteelCool™ Stainless Steel Interior illuminated by 3DLighting™
- Push-To-Open™ Door Assist opens the door upon a slight push for a luxuriously convenient experience
- Internal Water Dispenser for easy access to clean, filtered water
- IQ RemoteView™ Cameras (Wi-Fi) enables users to check what's in your fridge from your phone

TEMPERATURE RANGES

REFRIGERATOR	34°F (1°C) TO 44°F (7°C)
REFRIGERATOR - POWER COOL	34°F (1°C)
FRESHZONE™ DRAWER	37°F (3°C) / 33°F (1°C) / 29°F (-1°C)

DIMENSIONS & WEIGHT

APPLIANCE DIMENSIONS (H X W X D) (IN.)	83 3/8" X 23 5/8" X 23 13/16"
REQUIRED CUTOUT SIZE (H X W X D) (IN.)	84" X 24" X 25"
NET WEIGHT (LBS.)	377

GENERAL PROPERTIES

PANEL READY	YES
DOOR SWING	RIGHT
PUSH-TO-OPEN™ DOOR ASSIST	YES
INTERNAL WATER DISPENSER	YES
IQ REMOTEVIEW™ CAMERA	YES (2 EA)
DEODORIZING FILTER	YES
LIGHTING	3DLIGHTING™
INTERIOR MATERIAL	STEELCOOL™ STAINLESS STEEL INTERIOR
FULL WIDTH SHELVES	4 EA
SHELF MATERIAL	TEMPERED, METAL TRIM, SPILL-PROOF
FULL EXTENSION DRAWERS AT 90° DOOR OPENING ANGLE	YES
FRESHZONE™ DRAWER	YES - CHEESE (37°F) / COLD DRINKS (33°F) / MEAT (29°F)
CRISPER DRAWERS	2 EA
DOOR BINS	4 EA
DOOR OPEN ALARM	YES
SPECIAL MODES	SABBATH MODE

CAPACITY

TOTAL UNIT GROSS CAPACITY (CU.FT.) - AHAM	13.7 CU. FT.
REFRIGERATOR GROSS CAPACITY (CU.FT.)	13.7 CU. FT.

PERFORMANCE

DEDICATED EVAPORATOR & COMPRESSOR SYSTEM	YES
POWER COOL	YES
PRECISE COOLING	YES

EFFICIENCY

ENERGY STAR QUALIFIED	YES
ANNUAL ENERGY CONSUMPTION	260 KWH/YEAR

TECHNICAL DETAILS

CURRENT (A)	3
VOLTS (V)	115
FREQUENCY (HZ)	60
POWER CORD LENGTH (IN.)	78 3/4"
PLUG TYPE	120 V 3 PRONG

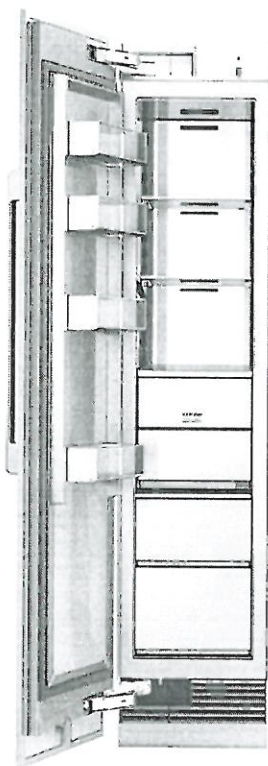
WARRANTY

LIMITED, ENTIRE APPLIANCE, PARTS AND LABOR ON ANY PART OF THE REFRIGERATOR	2 YEAR
LIMITED WARRANTY FOR SEALED REFRIGERATION SYSTEM, PARTS AND LABOR	3RD TO 6TH YEAR
LIMITED WARRANTY FOR SEALED REFRIGERATION SYSTEM, PARTS ONLY	7TH TO 12TH YEAR
LIMITED WARRANTY FOR COMPRESSOR, PARTS ONLY	13TH TO 15TH YEAR

dacor

18-INCH FREEZER COLUMN,  
LEFT-HINGE PANEL-READY

DRZ18980LAP



AW  
PV-110  
Sept. 25, 2020



PRODUCT FEATURES

- Full height door with true flush cabinet integration without exposed venting grille
- SteelCool™ Stainless Steel Interior illuminated by 3DLighting™
- Push-To-Open™ Door Assist opens the door upon a slight push for a luxuriously convenient experience

TEMPERATURE RANGES

FREEZER	5°F (-15°C) TO -8°F (-23°C)
FREEZER - POWER FREEZE	-8°F (-23°C)

DIMENSIONS & WEIGHT

APPLIANCE DIMENSIONS (H X W X D) (IN.)	83 5/8" X 17 5/8" X 23 13/16"
REQUIRED CUTOUT SIZE (H X W X D) (IN.)	84" X 18" X 25"
NET WEIGHT (LBS)	289

GENERAL PROPERTIES

PANEL READY	YES
DOOR SWING	LEFT
PUSH-TO-OPEN™ DOOR ASSIST	YES
ICEMAKER	STANDARD ICEMAKER
LIGHTING	3DLIGHTING™
INTERIOR MATERIAL	STEELCOOL™ STAINLESS STEEL INTERIOR
FULL WIDTH SHELVES	3 EA
SHELF MATERIAL	TEMPERED, METAL TRIM, SPILL-PROOF
FULL EXTENSION DRAWERS AT 90° DOOR OPENING ANGLE	YES
HIDDEN COMPARTMENT WITH FLIP-UP COVER	NO
FREEZER DRAWER	2 EA
DOOR BINS	4 EA
DOOR OPEN ALARM	YES
SPECIAL MODES	SABBATH MODE

CAPACITY

TOTAL UNIT GROSS CAPACITY (CU FT) - AHAM	9.5 CU. FT.
REFRIGERATOR GROSS CAPACITY (CU FT)	9.5 CU. FT.

PERFORMANCE

DEDICATED EVAPORATOR & COMPRESSOR SYSTEM	YES
POWER FREEZE	YES
DEFROST PROCESS	FROST-FREE
PRECISE COOLING	YES

EFFICIENCY

ENERGY STAR QUALIFIED	YES
ANNUAL ENERGY CONSUMPTION	465 KWH/YEAR

TECHNICAL DETAILS

CURRENT (A)	3
VOLTS (V)	115
FREQUENCY (Hz)	60
POWER CORD LENGTH (IN.)	78 3/4"
PLUG TYPE	120 V, 3 PRONG

WARRANTY

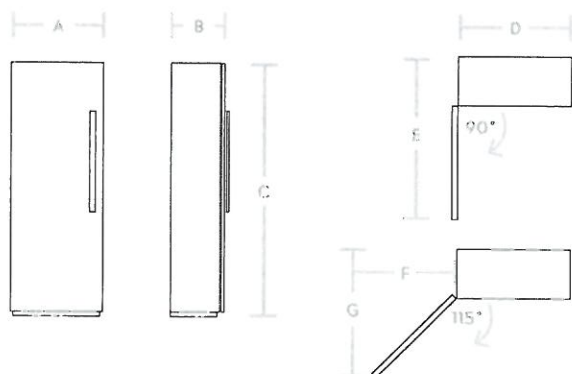
LIMITED, ENTIRE APPLIANCE, PARTS AND LABOR ON ANY PART OF THE REFRIGERATOR	2 YEAR
LIMITED WARRANTY FOR SEALED REFRIGERATION SYSTEM; PARTS AND LABOR	3RD TO 6TH YEAR
LIMITED WARRANTY FOR SEALED REFRIGERATION SYSTEM; PARTS ONLY	7TH TO 12TH YEAR
LIMITED WARRANTY FOR COMPRESSOR; PARTS ONLY	13TH TO 15TH YEAR



## 18-INCH FREEZER COLUMN, LEFT-HINGE PANEL-READY

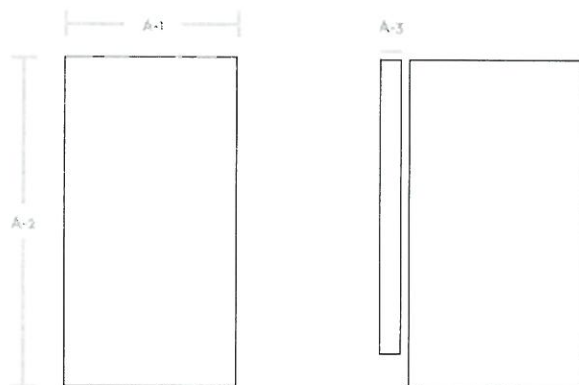
### APPLIANCE DIMENSIONS

A (TOTAL WIDTH INCL. PANELS)	17 3/4" (451 MM)
B (TOTAL DEPTH WITH 3/4" PANEL)	25" (635 MM)
C (HEIGHT)	83 3/8" (2118 MM)
D	17 5/8" (447 MM)
E	44 3/4" (1136 MM)
F	11 13/16" (275 MM)
G	43 7/8" (1114 MM)



### CUSTOM PANEL DIMENSIONS

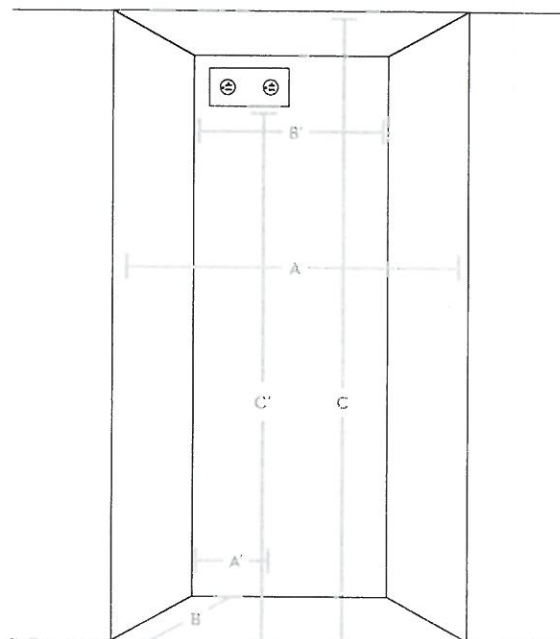
A-1 (WIDTH)	17 3/4" (603 MM)
A-2 (HEIGHT)	79 7/8" (2029 MM)
A-3 (DEPTH)	3/4" (19 MM)
MAX WEIGHT	152.0 LBS. (60 KG)



### INSTALLATION CUTOUT DIMENSIONS

A (WIDTH)	18" (457 MM)
B (DEPTH)	25" (635 MM)
C (HEIGHT)	84" (2134 MM)
A'	3" (140 MM)
B'	8" (356 MM)
C'	80" (2032 MM)

PV-110  
Sept. 25, 2020  
A.W. R



### ACCESSORIES

GRAPHITE STAINLESS STEEL - 18" PANEL (LEFT HINGE)  
GRAPHITE STAINLESS STEEL - 18" KICK PLATE  
GRAPHITE STAINLESS STEEL - MODERNIST HANDLE  
SILVER STAINLESS STEEL - 18" PANEL (LEFT HINGE)  
SILVER STAINLESS STEEL - 18" KICK PLATE  
SILVER STAINLESS STEEL - MODERNIST HANDLE  
SILVER STAINLESS STEEL - DACOR PRO HANDLE  
PAIR INSTALLATION KIT  
WATER FILTER  
DEODORIZING FILTER

RAC180PLHMS  
RAC18TKBBMS  
RAC00MHAAMS  
RAC180PLHSR  
RAC18TKBBSR  
RAC00MHAASR  
RAC00PHAASR  
RAC00CPAAAA  
RAC00WFAAAA  
RAC00DFAAAA



# 24" Panel Ready Special Application

800 Series - Panel Ready SGV68U53UC

PV-110  
Sept. 25, 2020  
A.W. R



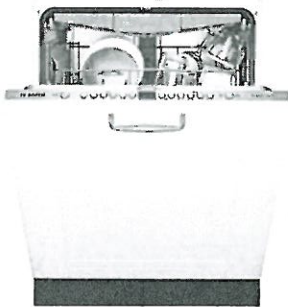
The 3rd rack offers 30% more loading area. Perfect for ramekins, cooking utensils and extra long silverware.

- Features & Benefits**
- 44 dBA: Quietest dishwasher brand.
- 3rd rack adds versatility and offers 30% more loading capacity.
- Water softener ensures optimally spot-free and shiny dishes.
- RackMatic® offers 3 height levels, for 9 possible rack positions.
- InfoLight® shines on the floor so you know the dishwasher's running.

General Properties	
Number of wash cycles	6
Number of options	5
dBA	44
Third rack	Standard
Rack adjustability	RackMatic®
Tub material	Stainless steel
Control type	Buttons
Concealed heating element	Yes
Leak protection system	24/7 AquaStop® Plus
Water softener	Yes
Five-level wash	Yes
ChildLock	No
Special features	InfoLight®, Eco Cycle

Efficiency	
Water usage per cycle	3.0
Energy efficiency class	Tier 1
ENERGY STAR® qualified	Yes
Total annual energy consumption (kWh)	259 kWh
Total annual water consumption (g)	645

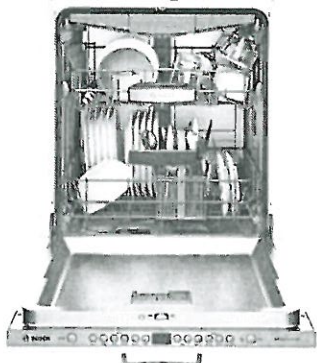
Capacity	
Number of place settings	15



Technical Details	
Watts (W)	1300 W
Current (A)	12 Amps
Volts (V)	120 V
Frequency (Hz)	60 Hz
Power cord length	68 7/8"
Minimum water pressure (lb/sin)	7
Length inlet hose (in)	65"
Length outlet hose (in)	74 7/8"

Dimensions & Weight	
Overall appliance dimensions (HxWxD) (in)	32 1/16" x 23 9/16" x 21 5/8"
Required cutout size (HxWxD) (in)	32 1/8" x 24" x 24"
Adjustable feet	Yes
Net weight (lbs)	87 lbs

Accessories—Optional	
Dishwasher Softener Salt (4.4 lbs)	SGZ9092UC
Dishwasher Drain Hose Extension 76 3/4"	SGZ1010UC
Dishwasher Accessory Kit	SMZ5000
Anti-tarnish Silverware Cassette	SMZ5002



For help and assistance with Bosch accessories please visit: [www.bosch-eshop.com/eshop/bosch/us](http://www.bosch-eshop.com/eshop/bosch/us) or call 1-800-944-2904 Mon-Fri 5am to 6pm PST Sat 6am to 3pm PST

Notes: All height, width and depth dimensions are shown in inches. BSH reserves the absolute and unrestricted right to change product materials and specifications, at any time, without notice. Consult the product's installation instructions for final dimensional data and other details prior to making cutout. Applicable product warranty can be found in accompanying product literature or you may contact your account manager for further details.

Warranties: Bosch warrants that the Product is free from defects in materials and workmanship for a period of three hundred and sixty-five (365) days from the date of purchase. The foregoing timeline begins to run upon the date of purchase, and shall not be stalled, tolled, extended, or suspended, for any reason whatsoever. This Product is also warranted to be free from cosmetic defects in material and workmanship (such as scratches of stainless steel, paint/porcelain blemishes, chip, dents, or other damage to the finish) of the Product, for a period of thirty (30) days from the date of purchase or closing date for new construction. This cosmetic warranty excludes slight color variations due to inherent differences in painted and porcelain parts, as well as differences caused by kitchen lighting, product location, or other similar factors. This cosmetic warranty specifically excludes any display, floor, "As Is", or "B" stock appliances.

For more information on our entire line of products, go to [www.bosch-home.com/us](http://www.bosch-home.com/us) or call 1-800-944-2904

© BSH Home Appliances Corporation. All rights reserved. Bosch is a registered trademark of Robert Bosch GmbH.

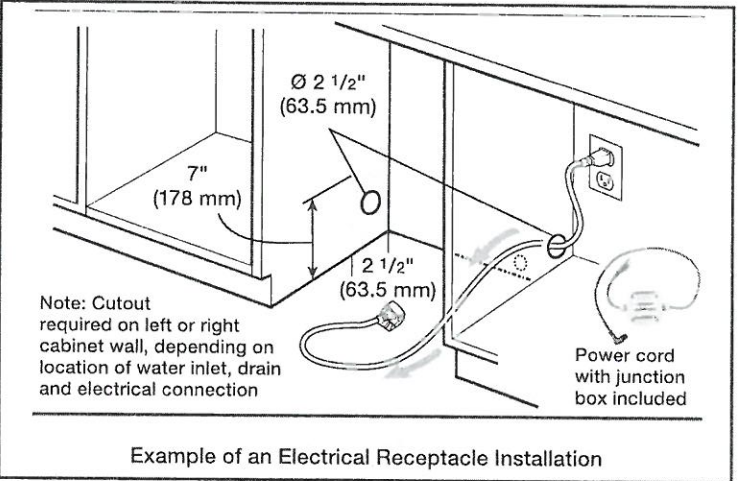
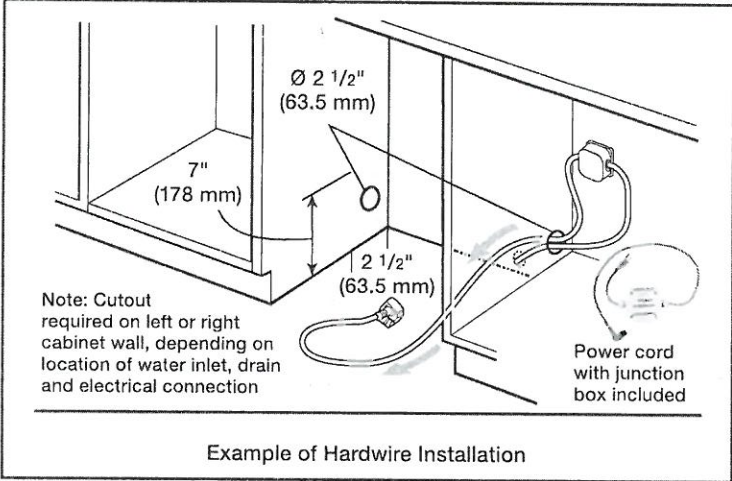
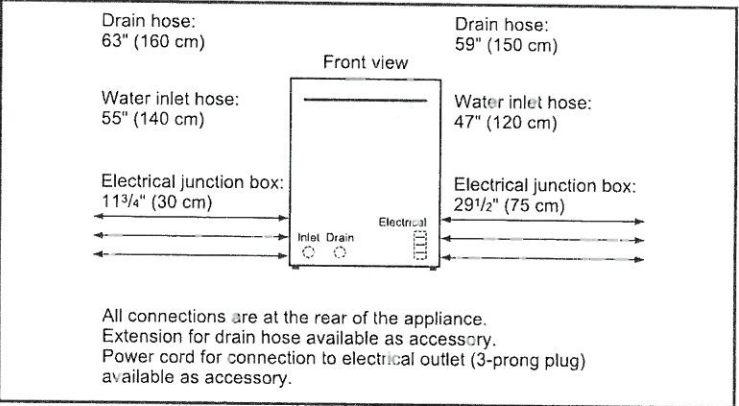
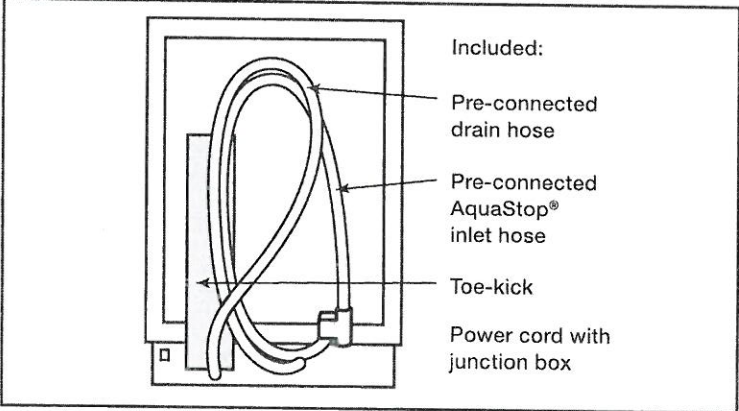
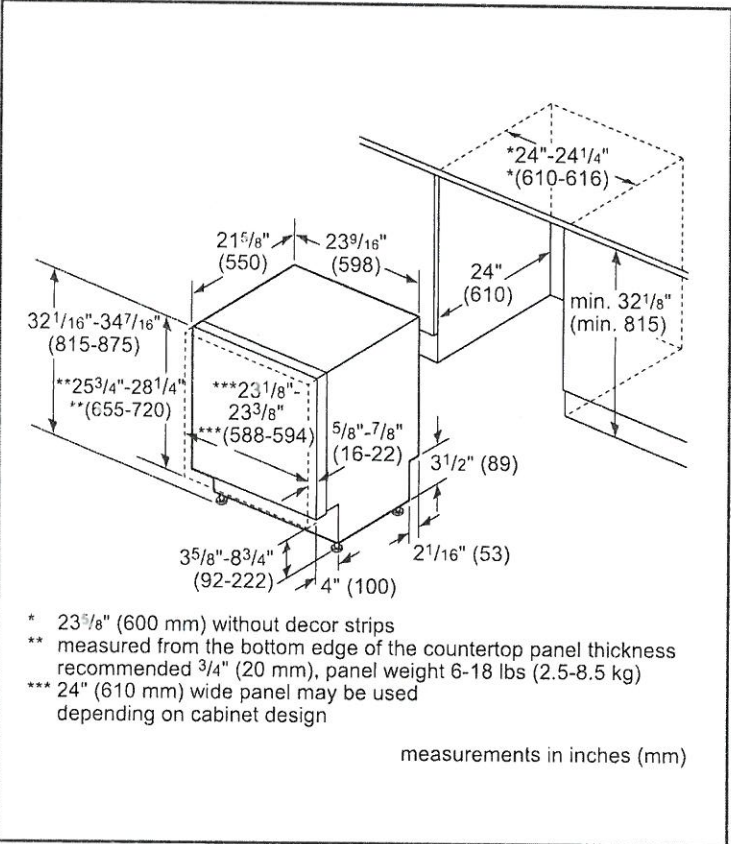
# 24" Panel Ready Special Application

800 Series – Panel Ready SGV68U53UC

PV-110  
Sept. 25, 2020  
A-W R



## Installation Details



For help and assistance with Bosch accessories please visit: [www.bosch-eshop.com/eshop/bosch/us](http://www.bosch-eshop.com/eshop/bosch/us) or call 1-800-944-2904 Mon-Fri 5am to 6pm PST Sat 6am to 3pm PST

Notes: All height, width and depth dimensions are shown in inches. BSH reserves the absolute and unrestricted right to change product materials and specifications, at any time, without notice. Consult the product's installation instructions for final dimensional data and other details prior to making cutout. Applicable product warranty can be found in accompanying product literature or you may contact your account manager for further details.

Warranties: Bosch warrants that the Product is free from defects in materials and workmanship for a period of three hundred and sixty-five (365) days from the date of purchase. The foregoing timeline begins to run upon the date of purchase, and shall not be stalled, tolled, extended, or suspended, for any reason whatsoever. This Product is also warranted to be free from cosmetic defects in material and workmanship (such as scratches of stainless steel, paint/porcelain blemishes, chip, dents, or other damage to the finish) of the Product, for a period of thirty (30) days from the date of purchase or closing date for new construction. This cosmetic warranty excludes slight color variations due to inherent differences in painted and porcelain parts, as well as differences caused by kitchen lighting, product location, or other similar factors. This cosmetic warranty specifically excludes any display, floor, "As Is", or "B" stock appliances.

For more information on our entire line of products, go to [www.bosch-home.com/us](http://www.bosch-home.com/us) or call 1-800-944-2904

© BSH Home Appliances Corporation. All rights reserved. Bosch is a registered trademark of Robert Bosch GmbH.



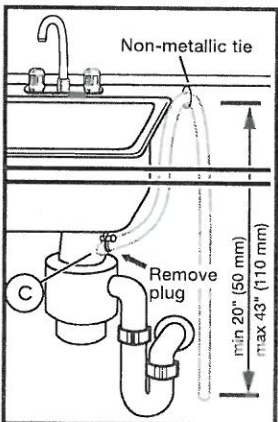
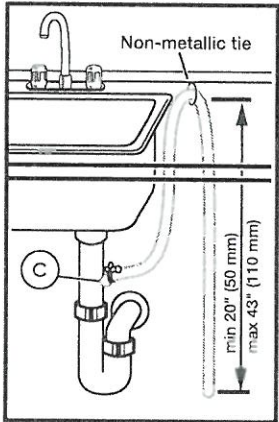
# 24" Panel Ready Special Application

800 Series - Panel Ready SGV68U53UC

PV-110 ~~AN~~ R  
Sept. 25, 2020



## Installation Details



Note: Plumbing installations will vary - refer to local codes. Drain hose included is 88 5/8" (225 cm) and can be extended to a maximum of 165 3/8" (420 cm).

Always use the approved drain hose extension kit (SGZ1010UC).

Ensure a portion of the drain hose is raised between min. 20" (50 cm) and max. 43" (110 cm) above the cabinet floor.

For help and assistance with Bosch accessories please visit: [www.bosch-eshop.com/eshop/bosch/us](http://www.bosch-eshop.com/eshop/bosch/us) or call 1-800-944-2904 Mon-Fri 5am to 6pm PST Sat 6am to 3pm PST

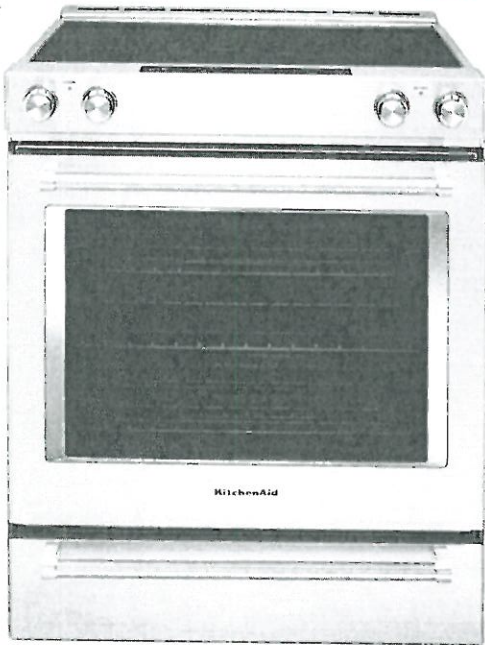
Notes: All height, width and depth dimensions are shown in inches. BSH reserves the absolute and unrestricted right to change product materials and specifications, at any time, without notice. Consult the product's installation instructions for final dimensional data and other details prior to making cutout. Applicable product warranty can be found in accompanying product literature or you may contact your account manager for further details.

Warranties: Bosch warrants that the Product is free from defects in materials and workmanship for a period of three hundred and sixty-five (365) days from the date of purchase. The foregoing timeline begins to run upon the date of purchase, and shall not be stalled, tolled, extended, or suspended, for any reason whatsoever. This Product is also warranted to be free from cosmetic defects in material and workmanship (such as scratches of stainless steel, paint/porcelain blemishes, chip, dents, or other damage to the finish) of the Product, for a period of thirty (30) days from the date of purchase or closing date for new construction. This cosmetic warranty excludes slight color variations due to inherent differences in painted and porcelain parts, as well as differences caused by kitchen lighting, product location, or other similar factors. This cosmetic warranty specifically excludes any display, floor, "As Is", or "B" stock appliances.

For more information on our entire line of products, go to [www.bosch-home.com/us](http://www.bosch-home.com/us) or call 1-800-944-2904

© BSH Home Appliances Corporation. All rights reserved. Bosch is a registered trademark of Robert Bosch GmbH.

AN R PV-110 Sept. 25, 2020  
Spice Kitchen



**KitchenAid® 30-Inch 5-Element Electric Convection Slide-In Range with Baking Drawer**

YKSEB900ESS

Available Finishes/Colours

YKSEB900ESS  
Other

**Dimensions**

Height	36
Width	29 7/8

**Configuration and Overview**

Fuel Type	Electric
Range Type	Slide-in

**Cooktop Features**

Cooktop Element Style	Radiant
Cooktop Surface Color	Black
Cooktop Surface Material	Ceramic Glass
Number of Cooking Element-Burners	5
Center Rear Element-Burner Power	100W
Center Rear Element-Burner Size	6"

**Cooktop Features**

Center Rear Element-Burner Type	Warming
Left Front Element-Burner Power	3000W/1950W/1050W
Left Front Element-Burner Size	12"9"/6"
Left Front Element-Burner Type	Triple
Left Rear Element-Burner Power	1300W
Left Rear Element-Burner Size	6"
Left Rear Element-Burner Type	Hyper

This versatile electric range provides a Baking Drawer that adds more options to the oven. The separate compartment allows you to bake at a different temperature. This range also features Even-Heat™ True Convection, helping you achieve flawless cooking results. The unique bow-tie design and convection fan ensure the entire oven is heated to, and stays at, the perfect temperature.

**Top Features**

- Baking drawer
- Even-Heat™ True Convection
- Steam Rack

**Manuals & Literature:**

 [Use and Care](#)  [Warranty](#)



Because Whirlpool Corporation policy includes a continuous commitment to improve our products, we reserve the right to change materials and specifications without notice. Dimensions are for planning purposes only. For complete details, see Installation Instructions packed with product. Specifications subject to change without notice.

- Cabinet opening dimensions that are shown must be used. Given dimensions are minimum clearances.
- The anti-tip bracket must be installed. To install the anti-tip bracket shipped with the range, see "Install Anti-Tip Bracket" section.
- Grounded electrical supply is required. See the appropriate "Electrical Requirements" section.
- Contact a qualified floor covering installer to check that the floor covering can withstand at least 200°F (93°C).
- Use an insulated pad or ¼" (0.64 cm) plywood under range if installing range over carpeting.

**IMPORTANT:** To avoid damage to your cabinets, check with your builder or cabinet supplier to make sure that the materials used will not discolor, delaminate or sustain other damage. This oven has been designed in accordance with the requirements of UL and CSA International and complies with the maximum allowable wood cabinet temperatures of 194°F (90°C).

**Mobile Home - Additional Installation Requirements**

The installation of this range must conform to the Manufactured Home Construction and Safety Standard, Title 24 CFR, Part 3280 (formerly the Federal Standard for Mobile Home Construction and Safety, Title 24, HUD Part 280). When such standard is not applicable, use the Standard for Manufactured Home Installations, ANSI A225.1/NFPA 501A or with local codes.

In Canada, the installation of this range must conform with the current standards CAN/CSA-A240-latest edition, or with local codes.

**Mobile Home Installations Require:**

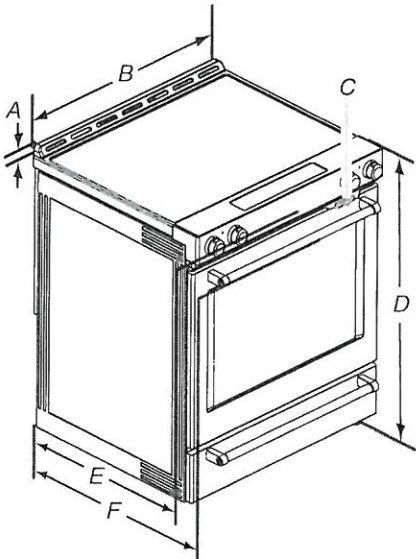
- When this range is installed in a mobile home, it must be secured to the floor during transit. Any method of securing the range is adequate as long as it conforms to the standards listed above.
- Four-wire power supply cord or cable must be used in a mobile home installation. The appliance wiring will need to be revised. See "Electrical Connection - U.S.A. Only" section.

1Y-110 **AN** **R**  
 Sept. 25, 2020

**Product Dimensions**

This manual covers several models. Your model may appear different from the models depicted. Dimensions given are maximum dimensions across all models.

**Model KSEB900**



- A. 1 3/16" (3.0 cm) height from cooktop to top of vent
- B. 29 7/8" (75.9 cm)
- C. Model/serial/rating plate (located behind the oven door on the top right-hand side of the oven frame)
- D. 36" (91.4 cm) height to top of cooktop edge with leveling legs screwed all the way in\*
- E. 28 5/16" (71.9 cm) max. depth from front of console to back of range
- F. 28 7/8" (73.3 cm) max. depth from handle to back of range

**IMPORTANT:** Range must be level after installation. Follow the instructions in the "Level Range" section. Using the cooktop as a reference for leveling the range is not recommended.

\*Range can be raised approximately 1" (2.5 cm) by adjusting the leveling legs.



## Cabinet Dimensions

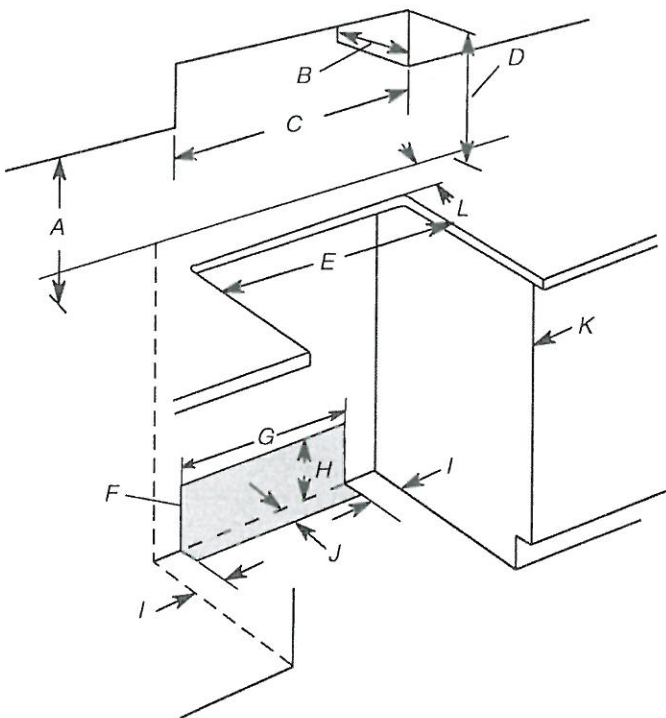
Cabinet opening dimensions shown are for 25" (64.0 cm) countertop depth, 24" (61.0 cm) base cabinet depth and 36" (91.4 cm) countertop height.

**IMPORTANT:** If installing a range hood or microwave hood combination above the range, follow the range hood or microwave hood combination installation instructions for dimensional clearances above the cooktop surface.

Range may be installed next to combustible walls with zero clearance.

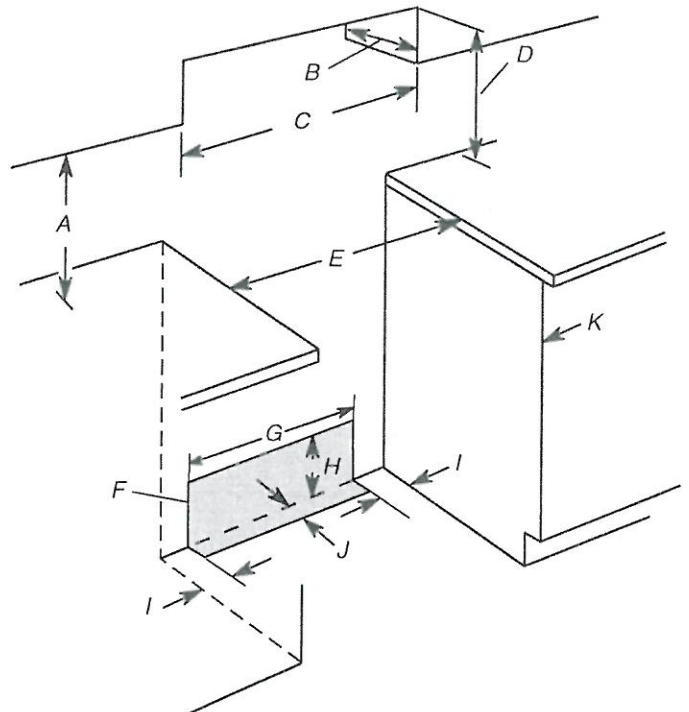
**NOTE:** When installed in a slide-in cutout, the front of oven door may protrude beyond the base cabinet.

### Slide-In Cutout



- A. 18" (45.7 cm) upper side cabinet to countertop
- B. 13" (33 cm) max. upper cabinet depth
- C. 30" (76.2 cm) min. opening width
- D. For minimum clearance to top of cooktop, see NOTE\*.
- E. 30" (76.2 cm) min. opening width
- F. The shaded area is recommended for installation of grounded outlet.
- G. 13 1/8" (33.3 cm)
- H. 7 1/16" (19.5 cm)
- I. 4 13/16" (12.2 cm)
- J. 3 1/16" (9.4 cm) plus measurement of L
- K. Cabinet door or hinges should not extend into the cutout.
- L. Remaining counter depth should not exceed 2 1/4" (5.7 cm).

### Freestanding Cutout



- A. 18" (45.7 cm) upper side cabinet to countertop
- B. 13" (33 cm) max. upper cabinet depth
- C. 30" (76.2 cm) min. opening width
- D. For minimum clearance to top of cooktop, see NOTE\*.
- E. 30" (76.2 cm) min. opening width
- F. The shaded area is recommended for installation of grounded outlet.
- G. 13 1/8" (33.3 cm)
- H. 7 1/16" (19.5 cm)
- I. 4 13/16" (12.2 cm)
- J. 3 1/16" (9.4 cm)
- K. Cabinet door or hinges should not extend into the cutout.

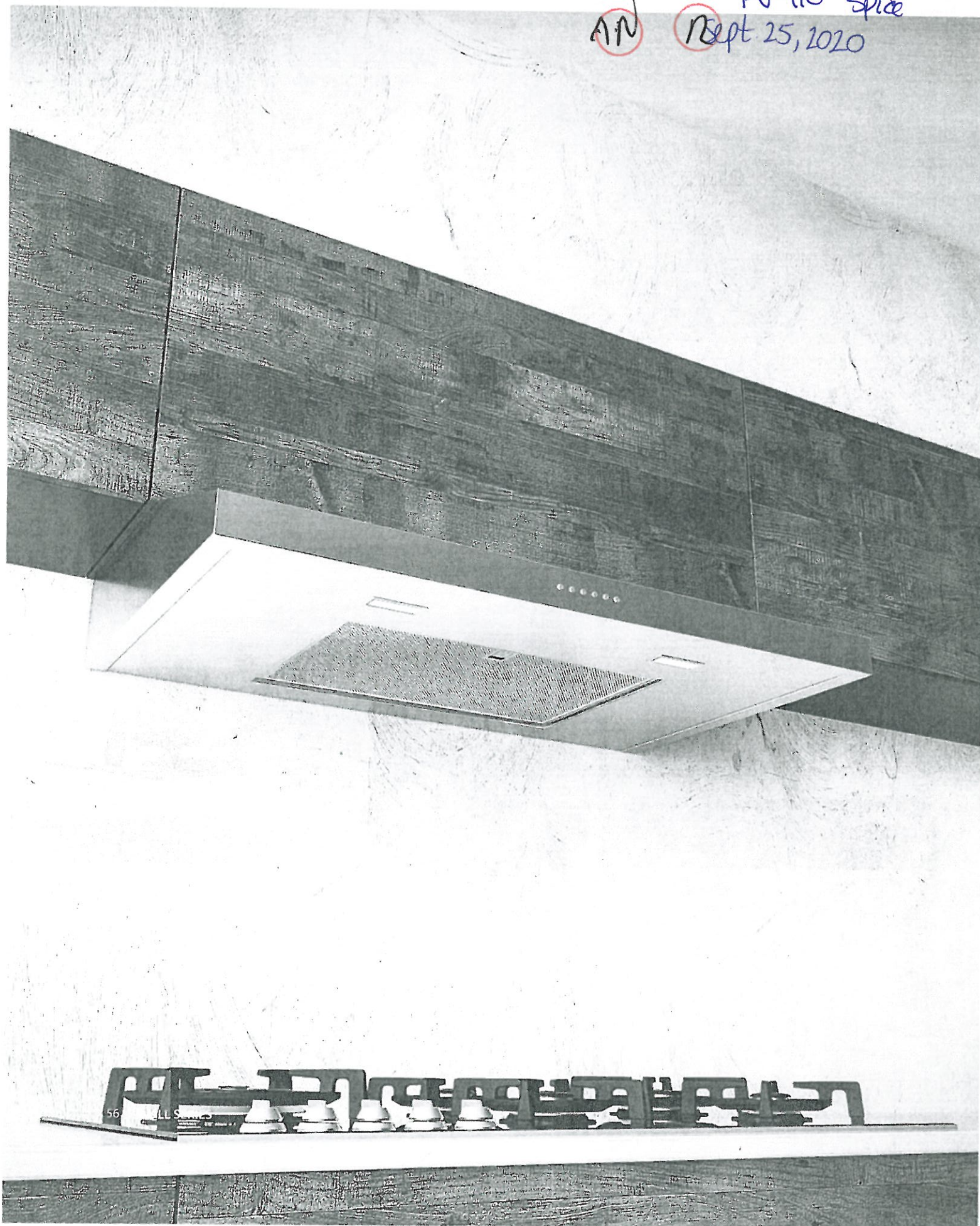
**\*NOTE:** 24" (61.0 cm) minimum when bottom of wood or metal cabinet is shielded by not less than 1/4" (0.64 cm) flame retardant millboard covered with not less than No. 28 MSG sheet steel, 0.015" (0.4 mm) stainless steel, 0.024" (0.6 mm) aluminum or 0.020" (0.5 mm) copper.

30" (76.2 cm) minimum clearance between the top of the cooking platform and the bottom of an uncovered wood or metal cabinet.

PV-110  
Sept. 25, 2020

AN

PV-110 Spice  
Sept 25, 2020

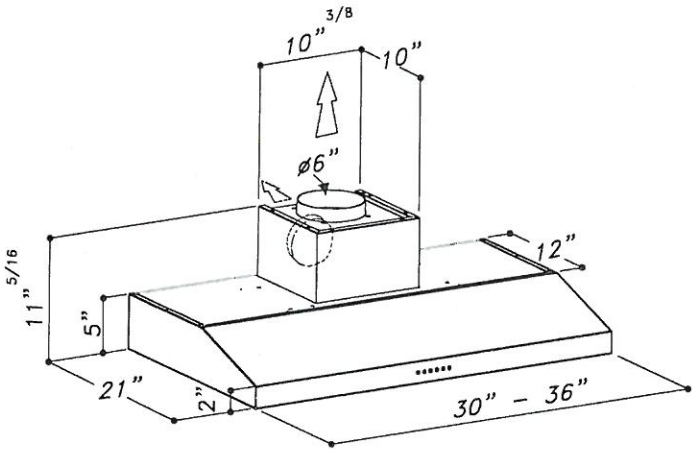




SUF630  
SUF636

**SUF6**  
stainless steel AISI 430 /  
glass

PI-110, **AN** **12**  
spice kitchen  
sept.25,2020



MOTOR	600 CFM Aluminium die-cast motor housing Pressure: 680Pa Noise level: 64 dBA
LIGHTING	2x 2.5W Led spot
CONTROL PANEL	Chromed push button 4 speeds + delay off timer + light switch
GREASE FILTER	Anodized aluminium (5+1 layers)
AIR OUTLET	6" round
DISCHARGE	Vertical and horizontal
ACCESSORIES	Charcoal filters: KF2 (order 1 pc) Code 60071099999

PV-110 ~~AW~~ ~~2~~  
Sept. 25, 2020



## WM9000H\*A

### 5.2 cu.ft. MEGA Capacity with On-Door Control Panel & TurboWash®

#### SPECIFICATIONS

- 29" Width
- 5.2 cu. ft. MEGA Capacity with NeveRust™ Stainless Steel Drum Towers of towels, piles of sweatshirts, and a mountain of jeans? Go for it. The MEGA capacity (5.2 cu.ft.) tub lets you do more laundry in fewer loads. That's time saved and sore backs avoided.
- Direct Drive Motor with 10-Year Limited Warranty
- 1,300 RPM
- 14 Washing Programs
- 5 Temperature Settings (All Cold Rinses)

#### STYLISH DESIGN

- **Integrated On-Door Electronic Control Panel with LED Display and Dial-A-Cycle™**  
Electronic control panel is integrated into the door for a distinct style plus the intuitive functionality you expect from an LG washer.
- Large Tinted Glass Door with On-Door Controls
- Ergonomically Angled Drum & Door
- Extra Wide Door Opening
- Optional Matching Drawer Pedestal
- Optional Sidekick™ Pedestal Washer (WD200)

#### INNOVATIONS

- 2016 ENERGY STAR® Most Efficient
- CEE Tier 3
- CSA Sustainability
- **TurboWash® 2.0 Technology**  
Soccer practice. Groceries. Dinner. Dishes. Shouldn't your laundry move as fast as you? Now it can, with LG's enhanced TurboWash® technology. Powerful high-pressure nozzles save up to 30 minutes per load\* —without shortcutting cleaning performance, even on larger loads. Innovation that keeps up with your family calendar? That's not just laundry done fast—it's laundry at the speed of life.
- LG Steam Technology
- AAFA Qualified Allergiene™ Cycle
- Smart ThinQ™ (Wi-Fi)
- ColdWash™ Option
- 6Motion™ Technology
- SmartDiagnosis™
- TrueBalance™ Anti-Vibration System
- LoDecibel™ Quiet Operation
- SenseClean™
- Delay Wash (Up to 19 Hours)
- Easy Loading 10° TiTub™



TrueBalance™  
ANTI VIBRATION SYSTEM

TurboWash®

6MOTION DD™

COLDWASH™

SMART  
DIAGNOSIS™



#### MATERIALS AND FINISHES

NeveRust™ Stainless Steel Drum	Yes
Cabinet	PCM
Control Panel	Plastic
Top Plate	Painted
Door Rim	Glass/Chrome
Door Cover	Dark Black Tinted Square Cover
Door Opening	42-1/8"
Available Colors	White (W) Graphite Steel (V)

#### OPTIONS

Pedestal	WDP5W, WDP5V
Pedestal (WxHxD)	29" x 14-1/8" x 30-7/8"
Sidekick™	
Pedestal Washer	WD200CW WD200CV
Sidekick™ Pedestal Washer (WxHxD)	29" x 14-1/10" x 30-4/5"

#### ACCESSORIES

Hose Included	Yes
---------------	-----

#### LIMITED WARRANTY

1 Year Parts and Labor, 10 Years Motor, Lifetime on Drum

#### UPC CODES

WM9000HVA Washer (Graphite Steel)	048231 015349
WM9000HWA Washer (White)	048231 015356
DLEX9000V Electric Dryer (Graphite Steel)	048231 015363
DLEX9000W Electric Dryer (White)	048231 015370
DLGX9001V Gas Dryer (Graphite Steel)	048231 015387
DLGX9001W Gas Dryer (White)	048231 015394
WDP5V Pedestal (Graphite Steel)	048231 012904
WDP5W Pedestal (White)	048231 012898
WD200CV Sidekick™ Pedestal Washer (Graphite Steel)	048231 015199
WD200CW Sidekick™ Pedestal Washer (White)	048231 015196

#### CAPACITY

Capacity	5.2 cu. ft.
----------	-------------

#### APPEARANCE

Design Look	Front Control
On-Door Electronic Control Panel with LED Display	Yes
Touch Buttons	Yes
Dial-A-Cycle™	Yes

#### ENERGY

2016 ENERGY STAR® Most Efficient	Yes
CEE Tier	3

#### WASH PROGRAMS

No. of Programs	14
Wash Programs	Normal, Perm. Press, Delicates, Speed Wash, TubClean™, Sanitary, Allergiene™, Heavy Duty, BrightWhites™, Towels, Rinse+Spin, Download, Jumbo Wash, Bedding
No. of Options	13
Options	Prewash, Delay Wash, Extra Rinse, Child Lock, ColdWash™, FreshCare™, Steam, TurboWash™, Custom Program, Drum Light, Smart Grid, Remote Start, Wi-Fi Connect
No. of Wash/Rinse Temps	5 Extra Hot, Hot, Warm, Cold, Tap Cold (All Cold Rinses)
Spin Speeds	Extra High (1,300 max.), High, Medium, Low, No Spin
No. of Water Levels	Automatically adjusts to the size of load
No. of Soil Levels	5

#### FABRIC CARE FEATURES

TurboWash® 2.0 Technology	Yes
Steam Technology	Yes
Allergiene™ Cycle	Yes
Sanitary Cycle	Yes
ColdWash™ Option	Yes
SenseClean™ System	Yes

#### CONVENIENCE FEATURES

TrueBalance™ Anti-Vibration System	Yes
4 Tray Dispenser	Prewash, Main Wash (with liquid detergent cup), Bleach, Fabric Softener
LoDecibel™ Quiet Operation	Yes
End of Cycle Signal	Yes
LoadSense	Yes
Child Lock	Yes
Auto Sur's Removal	Yes
Forced Drain System	Yes
Leveling Legs	4 Adjustable Legs
SmartDiagnosis™	Yes (v 3.0)
Smart ThinQ™ (Wi-Fi)	Smart Grid Ready, Smart Access, Smart Adapt, Energy Monitoring, Laundry Starts

#### MOTOR AND AGITATOR

Motor Type	Inverter Direct Drive Motor
Motor Speed	Variable
Max RPM	1,300
Axis	Horizontal

Design, features and specifications are subject to change without notice. Non-metric weights and measurements are approximate.

© 2016 LG Electronics USA, Inc. All rights reserved. "LG Life's Good" is a registered trademark of LG Corp. All other product and brand names are trademarks or registered trademarks of their respective companies. 1/4/16





PV-110 **AN** **Q**  
Sept. 25, 2020

## WM9000H\*A QUICK INSTALL & CLEARANCES

For full installation directions/clearances please refer to the corresponding User Manual and Installation Guide.

DIMENSIONS	
A Width	29"
B Height	41-1/4"
C Depth	33-3/4"
D Depth with door open	55-15/16"
Carton (WxHxD)	31-5/16" x 44-19/64" x 35-5/8"
Weight (Product/Carton)	227.1 lbs / 233.7 lbs

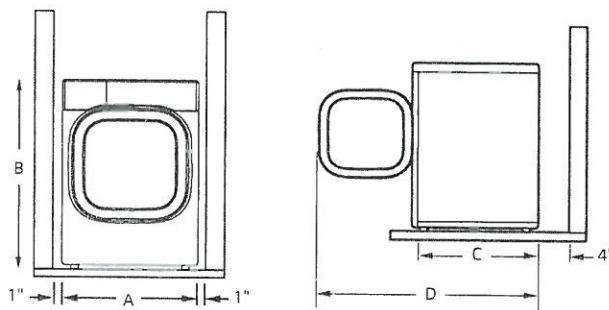
POWER SOURCE	
Ratings	UL Listed
Electrical Requirements	120V, 10 Amps
Type	Electric



### CONNECT TO THE POWER SUPPLY

- The washer should be plugged into a 120-VAC, 60-Hz grounded 3-prong outlet. Plug in the washer. Improper connection of the equipment-grounding conductor can result in risk of electric shock. Check with a qualified electrician or service technician if you are in doubt as to whether the appliance is properly grounded. Do not modify the plug provided with the appliance. If it does not fit the outlet, have a proper outlet installed by a qualified electrician. Failure to follow these warnings can cause serious injury, fire, electrical shock, or death.
- The power outlet must be within 60 inches (1.5 m) of either side of the washer.
- The appliance and outlet must be positioned so that the plug is easily accessible.
- Do not overload the outlet with more than one appliance.
- The outlet must be grounded in accordance with current wiring codes and regulations.
- Time-delay fuse or circuit breaker is recommended.
- It is the personal responsibility and obligation of the product owner to have a proper outlet installed by a qualified electrician.

### DIMENSIONS / CLEARANCES

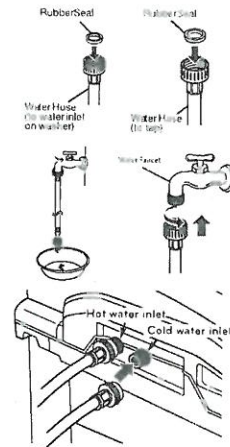


- Install the washing machine on a solid floor that is strong and rigid enough to support the weight of the washing machine, even when fully loaded, without flexing or bouncing. If the floor has too much flex, you may need to reinforce it to make it more rigid. If the floor is not solid, it may cause severe vibration and noise.

### CONNECTING THE WATER LINES

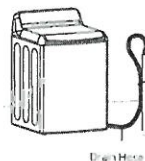
LG recommends the use of LG hoses. Any leaking, property damage, or damage to the washing machine caused by an improper installation or by the use of non-LG hoses is not covered under the terms of the LG warranty and is the sole responsibility of the customer and/or an installer.

- Water supply pressure must be between 20 psi and 120 psi (1.38-8.27 kPa). If the water supply pressure is more than 120 psi, a pressure reducing valve must be installed.
- Inspect the threaded fitting on each hose and make sure there is a rubber seal in place in both ends of each hose.
- Connect the water supply hoses to the HOT and COLD water faucets tightly by hand and then tighten another 2/3 turn with pliers.
- Always run a gallon or two of water through each inlet hose to flush dirt, scale and other debris out of the water lines. Doing so will help prevent future problems with clogged filter screens, and will also allow you to verify which water line is hot and which is cold.
- Attach the hot water line to the hot water inlet on the back of the washer. Attach the cold water line to the cold water inlet on the back of the washer. Tighten the fittings securely. Turn ON both faucets all the way and check for leaks at both ends of the hoses.



### CONNECTING THE DRAIN HOSE

- The drain hose should always be properly secured. Failure to properly secure the drain hose can result in flooding and property damage.
- The drain must be installed in accordance with any applicable local codes and regulations.
- Make sure that the drain hose is not stretched, pinched, crushed, or kinked.
- Normal height of the end of the hose should be approximately 35"-47" (0.9-1.2 m) from the floor.
- Do not install the end of the drain hose lower than 29 in. (73.7 cm) or higher than 96 in. (243.8 cm) above the bottom of the washer or more than 60 in. (152.4 cm) away from the washer.
- Never create an airtight seal between the hose and the drain with tape or other means. If no air gap is present, water can be siphoned out of the tub resulting in poor wash/rinse performance or clothing damage.



#### STANDPIPE Option

Do not insert the end of the drain hose into the standpipe more than 8 inches (20 cm). Doing so can cause siphoning, odors, or improper draining.



#### LAUNDRY TUB Option

Do not use this drain hose with a floor drain. The end of the drain hose must be at least 29 inches above the floor for proper draining to occur.



PR-110  
Sept. 25, 2020



# DLEX9000\* / DLGX9001\*

## 9.0 cu.ft. MEGA Capacity TurboSteam® Dryer with On-Door Control Panel

### SPECIFICATIONS

- 9.0 cu. ft. MEGA Capacity with NeveRust™ Stainless Steel Drum  
When it comes to laundry capacity, big is good, bigger is better, but biggest is best. With 9.0 cu ft of mega capacity, now you can fit a king size comforter and full set of bedding in a single load! You'll definitely have more room to dry.
- 14 Drying Programs
- 5 Temperature Settings

### STYLISH DESIGN

- Integrated Upfront Electronic Control Panel with Dual LED Display and Dial-A-Cycle™  
Electronic control panel is integrated into the door for a distinct style plus the intuitive functionality you expect from an LG dryer.
- Large Tinted Glass Door with On-Door Controls
- Optional Matching Drawer Pedestal
- Reversible Door

### INNOVATIONS

- TurboSteam® Technology  
LG TurboSteam® technology to the rescue. Toss the shirt in the dryer; turn on TurboSteam® and in just 10 minutes your shirt is back in tip-top shape. Also helps refresh fabrics and reduce wrinkles in half the time of other steam settings.
- SteamFresh™ Cycle
- Sensor Dry System
- Precise Temperature Control with Variable Heat Source
- LoDecibel™ Quiet Operation
- Smart ThinQ™ (Wi-Fi)
- SmartDiagnosis™
- 3 Minute Installation Check
- FlowSense™ Duct Clogging Indicator
- Wrinkle Care Option
- Anti-Bacterial Cycle
- Damp Dry Signal



### CAPACITY

Capacity	9.0 cu. ft.
----------	-------------

### APPEARANCE

Design Look	On-Door Front Control Panel
Intelligent Electronic Controls with Dual LED Display	Yes
Touch Buttons	Yes
Dial-A-Cycle™	Yes

### DRYER PROGRAMS

No. of Programs	14
Programs	Cotton/Normal, Perm. Press/Casual, Towels, Delicates, Heavy Duty, TurboSteam®, SteamSanitary™, Bedding, LowTemp Dry, Anti-Bacterial, Jumbo Dry, Download/Super Dry
Programs (Manual Dry)	Speed Dry, Air Dry
No. of Options	13
Options	More Time, Less Time, Custom Program, PGM Save, Damp Dry Signal, Wrinkle Care, Child Lock, Wi-Fi Connect, Drum Light, Energy Saver, TurboSteam®, Smart Grid, Remote Start
Temperature Settings	High, Medium High, Medium, Low, Ultra Low
Drying Levels	Very Dry, More Dry, Normal Dry, Less Dry, Damp Dry
Manual Dry Times	60 min., 50 min., 40 min., 30 min., 20 min., More Time/Less Time

### CONVENIENCE FEATURES

LoDecibel™ Quiet Operation	Yes
End of Cycle Signal	Yes
Drum Light	Yes
Reversible Door	Yes
FlowSense™ Duct Clogging Indicator	Yes
Venting Option	Electric: 4 Way Venting Gas: 3 Way Venting
Leveling Legs	4 Adjustable Legs
Remaining Time Display/Status Indicator(s)	Yes
3 Minute Installation Check	Yes
SmartDiagnosis™	Yes (v 3.0)
Smart ThinQ™ (Wi-Fi)	Smart Grid Ready, Energy Monitoring, Black Box, Remote Control, Home Chat

### MATERIALS AND FINISHES

NeveRust™ Stainless Steel Drum	Yes
Cabinet	Painted Steel
Control Panel	Plastic
Top Cover	Painted Steel
Door	Glass/Chrome
Door Cover	Dark Black Tinted Square Cover
Available Colors	White (W) Graphite Steel (V)

### OPTIONS

Pedestal	WDP5W, WDP5V
Pedestal (WxHxD) 2	9" x 14 1/8" x 30 7/8"

### LIMITED WARRANTY

1 Year Parts and Labor

### UPC CODES

DLEX9000V Electric Dryer (Graphite Steel)	048231 015363
DLEX9000W Electric Dryer (White)	048231 015370
DLGX9001V Gas Dryer (Graphite Steel)	048231 015367
DLGX9001W Gas Dryer (White)	048231 015394
WM9000HVA Washer (Graphite Steel)	048231 015349
WM9000HWA Washer (White)	048231 015356
WDP5V Pedestal (Graphite Steel)	048231 012904
WDP5W Pedestal (White)	048231 012898
WD200CV Sidekick™ Pedestal Washer (Graphite Steel)	048231 015189
WD200CW Sidekick™ Pedestal Washer (White)	048231 015196



Life's Good

PV-110 AN 12  
Sept. 25, 2020

## DLEX9000\* / DLGX9001\* QUICK INSTALL & CLEARANCES

For full installation directions/clearances  
please refer to the corresponding  
User Manual and Installation Guide.

### DIMENSIONS

A Width	29"
B Height	40-7/8"
C Depth	33-3/8"
D Depth with door open	56"
Carton (WxHxD)	31-3/10" x 44-9/10" x 36-6/10"
Weight (Product/Carton)	Electric 157.4lbs / 182.1lbs Gas 160.7lbs / 185.4lbs

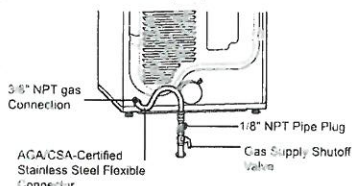
### POWER SOURCE

Ratings	CSA Listed
Electrical Requirements	120V, 15 Amps (Gas) 240V, 30 Amps (Electric)
Type	Gas/Electric
BTU	20,000



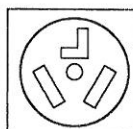
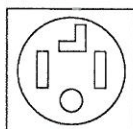
### CONNECTING THE GAS SUPPLY

- Installation and service must be performed by a qualified installer, service agency, or the gas supplier.
- Use only a new stainless steel flexible connector and a new AGA-certified connector.
- A gas shutoff valve must be installed within 6 ft. (1.8 m) of the dryer.
- The dryer is configured for natural gas when shipped from the factory. Make sure that the dryer is equipped with the correct burner nozzle for the type of gas being used (natural gas or propane gas).
- If necessary, the correct nozzle (for the LP nozzle kit, order part number 383EEL3002D) should be installed by a qualified technician and the change should be noted on the dryer.
- All connections must be in accordance with local codes and regulations. Gas dryers MUST exhaust to the outdoors.

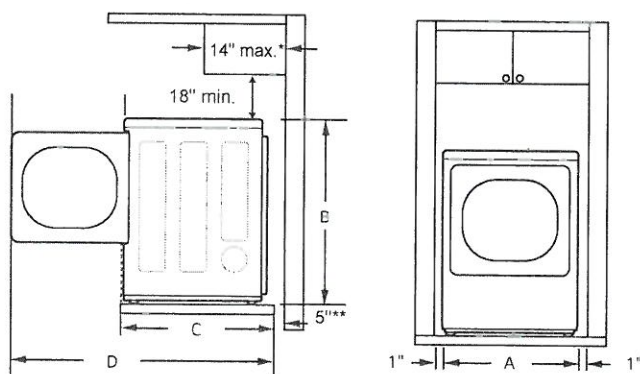


### CONNECTING ELECTRIC DRYERS

- A 4-wire connection is required for all mobile and manufactured home installations, as well as all new construction after January 1, 1996.
- A 3-wire connection is NOT permitted on new construction after January 1, 1996.
- A UL-listed strain relief is required.
- Use a 30-amp, 240-volt, 4-wire, UL-listed power cord with #10 AWG-minimum copper conductor and closed loop or forked terminals with upturned ends.



### DIMENSIONS / CLEARANCES



\* Required spacing

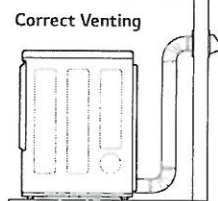
\*\* For side or bottom venting, 2-inch (5.1 cm) of spacing is allowed.

### VENTING / DUCTWORK

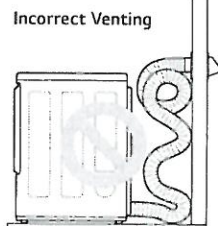
**NOTE:** Follow the guidelines below to maximize drying performance and reduce lint buildup and condensation in the ductwork. Ductwork and fittings are NOT included and must be purchased separately.

- Use 4-inch (10.2 cm) diameter rigid, semi-rigid or flexible metal ductwork.
- The exhaust duct run should be as short as possible.
- Use as few elbow joints as possible.
- The male end of each section of exhaust duct must point away from the dryer.
- Use duct tape on all duct joints.
- Insulate ductwork that runs through unheated areas in order to reduce condensation and lint buildup on duct surfaces.
- Incorrect or inadequate exhaust systems are not covered by the dryer warranty. Dryer failures or service required because of such exhaust systems will not be covered by the dryer warranty.

#### Correct Venting



#### Incorrect Venting



Wall Cap Type	Number of 90° Elbows	Maximum length of 4-inch diameter rigid metal duct
Recommended	0	65 ft. (19.8 m)
	1	55 ft. (16.8 m)
	2	47 ft. (14.3 m)
	3	36 ft. (11.0 m)
	4	28 ft. (8.5 m)
Use only for short run installations	0	55 ft. (16.8 m)
	1	47 ft. (14.3 m)
	2	41 ft. (12.5 m)
	3	30 ft. (9.1 m)
	4	22 ft. (6.7 m)

- Ductwork is not provided with the dryer. You should obtain the necessary ductwork locally. The vent hood should have hinged dampers to prevent backdraft when the dryer is not in use.
- The total length of flexible metal duct must not exceed 8 ft. (2.4 m).
- Deduct 6 ft. (1.8 m) for each additional elbow. Do not use more than four 90° elbows.



PV-110 AN R  
Sept. 25, 2020

### Installation Location Requirements

#### ⚠ WARNING

Read all installation instructions completely before installing and operating your dryer! It is important that you review this entire manual before installing and using your dryer. Detailed instructions concerning electrical connections, gas connections, and exhaust requirements are provided on the following pages.

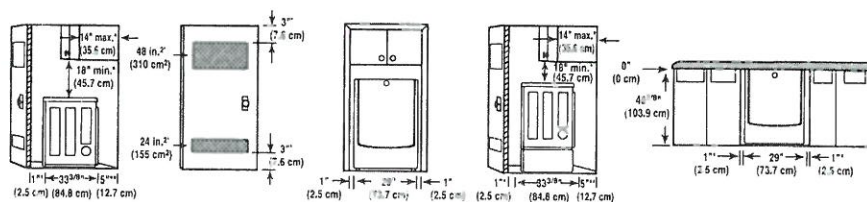
- A location that allows for proper exhaust installation. A gas dryer must be exhausted to the outdoors. See **Venting the dryer**.
- A grounded electrical outlet located within 2 ft. (61 cm) of either side of the dryer. See **Connecting Electric Dryers**.
- A sturdy floor to support the total dryer weight of 200 lbs (90.7 kg). The combined weight of a companion appliance should also be considered.
- No other fuel-burning appliance can be installed in the same closet as a dryer.

Do not operate your dryer at temperatures below 45°F (7°C). At lower temperatures, the dryer might not shut off at the end of an automatic cycle. This can result in longer drying times. The dryer must not be installed or stored in an area where it will be exposed to water and/or weather. Check code requirements. Some codes limit, or do not permit, installation of the dryer in garages, closets, mobile homes or sleeping quarters. Contact your local building inspector.

#### ! NOTE

- Floor must be level, with a maximum slope of 1 inch (2.5 cm) under entire dryer. Clothes may not tumble properly, and automatic sensor cycles may not operate correctly if dryer is not level.
- For a garage installation, you will need to place the dryer at least 18 inches (46 cm) above the floor. If using a pedestal, you will need 18 inches (46 cm) to the bottom of the dryer.

### Clearances



#### INSTALLATION SPACING FOR RECESSED AREA OR CLOSET INSTALLATION

The following clearances are recommended for this dryer. Although this dryer has been tested for 1 inch (2.5 cm) clearance on the sides and rear, the recommended clearances should be considered for the following reasons:

- Additional clearance should be considered for ease of installation and servicing.
- Additional clearances might be required for wall, door and floor moldings.
- Additional clearance should be considered on all sides of the dryer to reduce noise transfer.
- For closet installation, with a door, minimum ventilation openings in the top and bottom of the door are required. Louvered doors with equivalent ventilation openings are acceptable.
- Companion appliance clearances should also be considered.

#### ! NOTE

There should be at least a little space around the dryer (or any other appliance) to eliminate the transfer of vibration from one to the other. With enough vibration, the appliances will make noise or touch each other causing paint damage and making even more noise.

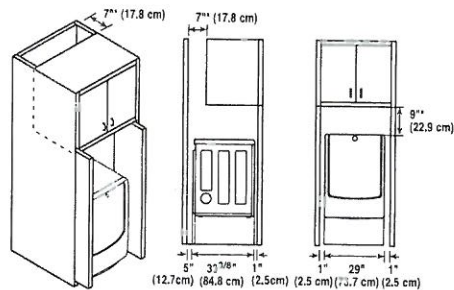


PV-110 AM R  
 Sept. 25, 2020

Clearances with Optional Pedestal Base

**RECOMMENDED INSTALLATION SPACING FOR CABINET INSTALLATION**  
 • For cabinet installation with a door, minimum ventilation openings in the top of the cabinet are required.

\*Required spacing  
 \*\*For side or bottom venting,  
 2 inches (5.1 cm) spacing is allowed.



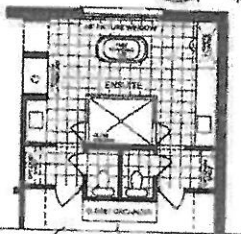
SCHEDULE 'F'



PV-110  
 MAR 20 2020  
 APR 21 2020

# The Knightswood 50' SERIES

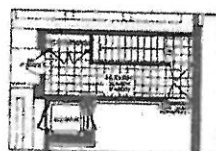
Elevation A • 4,445 sq.ft.  
 4,475 sq.ft. Opt. Elevator / 4,575 sq.ft. Opt. Service Stairs  
 Elevation B • 4,440 sq.ft.  
 4,475 sq.ft. Opt. Elevator / 4,575 sq.ft. Opt. Service Stairs  
 Elevation C • 4,525 sq.ft.  
 4,560 sq.ft. Opt. Elevator / 4,660 sq.ft. Opt. Service Stairs



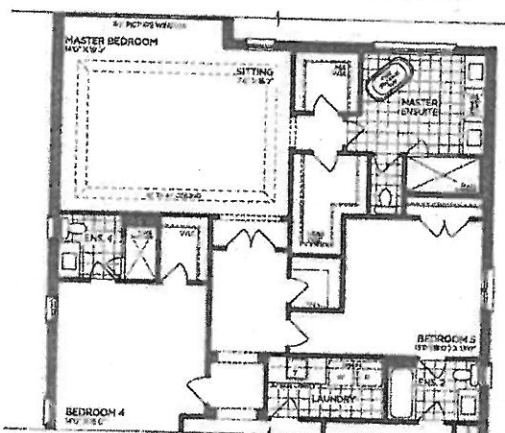
PART. OPT. ENSUITE LAYOUT



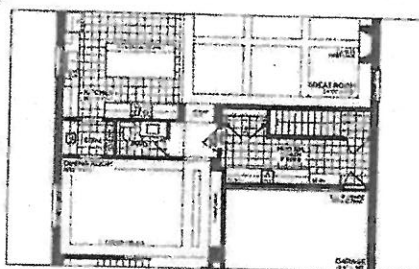
PART. OPT. WETBAR SITTING AREA



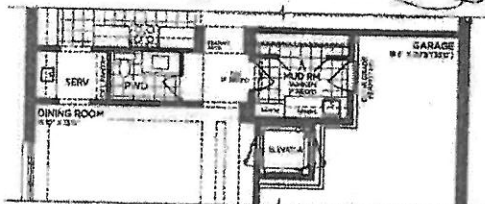
OPT. PART. GROUND FLOOR SERVICE STAIR W/ ELEVATOR



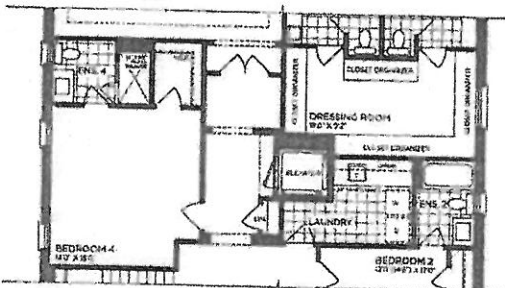
PART. OPT. SECOND FLOOR | ELEV. A (5 BEDROOMS)



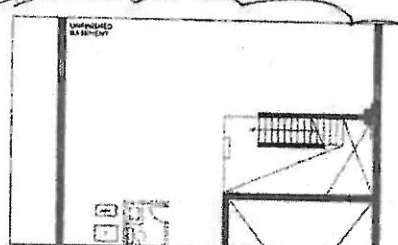
OPT. PART. GROUND FLOOR W/ SERVICE STAIR | ELEV. A



PART. OPT. GROUND FLOOR | ELEV. A (ELEVATOR)



PART. OPT. SECOND FLOOR | ELEV. A (ELEVATOR)



OPT. PART. BASEMENT W/ SERVICE STAIR | ELEV. A

VENDOR  
 PURCHASER  
 PURCHASER

**GOLDPARK**  
 WORTH MORE

Prices, figures, illustrations, sizes, features and finishes are subject to change without notice. Areas and dimensions are approximate and actual usable floor space may vary from the stated area. Layout may be reverse of the unit purchased. E. & O.E. 8005