

CONSTRUCTION SUMMARY

Lot: 119

Model: 40.01 A SUMMERDALE

Project/Phase: Pine Valley Forevergreen / 1

CERAMIC

Invoice	Qty.	Description
2281  07Aug20 NoCat	1	.***CUSTOM LAYOUT*** MASTER ENSUITE: DELETE WATER CLOSET, SQUARE OFF WALK-IN CLOSET, LOCATE TOILET BESIDE VANITY - SEE PLAN FOR REVISION
2402 46 07Aug20	1	MASTER ENSUITE - LEVEL 1 WALL TILE - 8X20" LAID IN HORIZONTAL STACKED PATTERN.
2402 37 07Aug20	1	KITCHEN: TILE, FLOOR , LEVEL 5 - KITCHEN - LEVEL 5 - 24X24" LAID IN STRAIGHT, STACKED PATTERN. please note: TILE 'VEINING' TO RUN IN SAME DIRECTION- SEE PLAN FOR DIRECTION
2402 37 07Aug20	1	FRONT FOYER: TILE, FLOOR , LEVEL 5 - FRONT FOYER - LEVEL 5 - 24X24" LAID IN STRAIGHT, STACKED PATTERN. please note: TILE 'VEINING' TO RUN IN SAME DIRECTION- SEE PLAN FOR DIRECTION
2402 35 07Aug20	1	POWDER ROOM: TILE, FLOOR , LEVEL 3 - POWDER ROOM - LEVEL 3 -12X24" LAID IN STRAIGHT, STACKED PATTERN. please note: TILE 'VEINING' TO RUN IN SAME DIRECTION- SEE PLAN FOR TILE DIRECTION

DRYWALL

Invoice	Qty.	Description
2281  07Aug20 NoCat	1	.STUDY: ADD OPTIONAL DOUBLE FRENCH DOOR #203 FLAT GLASS COMPLETE WITH BUILDERS STANDARD OFFERINGS
2281  07Aug20 NoCat	1	.RELOCATE LAUNDRY ROOM FROM GROUND FLOOR TO BASEMENT (SEE PLAN FOR PREFERRED LOCATION)
2281  07Aug20 NoCat	1	.***CUSTOM LAYOUT*** MASTER ENSUITE: DELETE WATER CLOSET, SQUARE OFF WALK-IN CLOSET, LOCATE TOILET BESIDE VANITY - SEE PLAN FOR REVISION

**Model: 40.01 A SUMMERDALE****Project/Phase: Pine Valley Forevergreen / 1**

# ELECTRICAL

Invoice	Qty.	Description
2281 72,667 07Aug20	2	.KITCHEN: ROUGH-IN FOR CAPPED CEILING OUTLET ( FUTURE LIGHT FIXTURE) - EACH LOCATE APPROX CENTERED ABOVE ISLAND - SEE PLAN FOR LOCATION
2281 72,278 07Aug20	1	.KITCHEN: ADDITIONAL INTERIOR SWITCH (FOR R/IN LIGHTS ABOVE ISLAND)
2281 72,289 07Aug20	5	.KITCHEN: 4" E/S LED INTERIOR POT LIGHT - GROUND FLOOR - EACH  USE STANDARD SWITCH FOR POTLIGHTS
2281 72,309 07Aug20	1	.KITCHEN: UPGRADE STANDARD CEILING MOUNT FIXTURE TO (1) LED POT LIGHT - GROUND FLOOR - SEE PLAN FOR LOCATION  USE THIS STANDARD SWITCH FOR POTLIGHTS
2281 72,289 07Aug20	6	.MAIN HALL: 4" E/S LED INTERIOR POT LIGHT - GROUND FLOOR - EACH  INCLUDED IN APS USE STANDARD SWITCHES
2281 72,268 07Aug20	1	.MASTER BEDROOM: ADD *AN ADDITIONAL* INTERIOR WALL OUTLET: 110V WALL INTERIOR RECEPTACLE ON EXISTING CIRCUIT - TOTAL 2 ON WINDOW WALL: 1 STANDARD + 1 EXTRA - LOCATE EACH BELOW WINDOW
2281 07Aug20 NoCat	1	.RELOCATE LAUNDRY ROOM FROM GROUND FLOOR TO BASEMENT (SEE PLAN FOR PREFERRED LOCATION)
2397 72,665 07Aug20	1	KITCHEN: 240V WALL RECEPTACLE ON SEPARATE CIRCUIT FOR BUILT-IN OVEN (DIRECTLY BELOW ELECTRIC COOKTOP). - APPROX. LOCATION AS PER ATTACHED DRAWINGS  DOES NOT INCLUDE APPLIANCE OR THE REQUIRED CHANGE TO CABINETRY AND COUNTER TOP

## EXTERIOR COLOURS

Invoice	Qty.	Description
2281 07Aug20 NoCat	1	EXTERIOR COLOUR PKG # BR.2

# FORMING

Invoice	Qty.	Description
2281 07Aug20 NoCat	1	.RELOCATE LAUNDRY ROOM FROM GROUND FLOOR TO BASEMENT (SEE PLAN FOR PREFERRED LOCATION)

**Model: 40.01 A SUMMERDALE****Project/Phase: Pine Valley Forevergreen / 1**

## FRAMING

Invoice	Qty.	Description
2281 72,647 07Aug20	1	.STUDY: ADD OPTIONAL DOUBLE FRENCH DOOR #203 FLAT GLASS COMPLETE WITH BUILDERS STANDARD OFFERINGS
2281 72,349 07Aug20	1	.RELOCATE LAUNDRY ROOM FROM GROUND FLOOR TO BASEMENT (SEE PLAN FOR PREFERRED LOCATION)
2281 07Aug20 NoCat	1	.***CUSTOM LAYOUT*** MASTER ENSUITE: DELETE WATER CLOSET, SQUARE OFF WALK-IN CLOSET, LOCATE TOILET BESIDE VANITY - SEE PLAN FOR REVISION


# GRANITE MARBLE QUARTZ

Invoice	Qty.	Description
2402 07Aug20 NoCat	1	KITCHEN: COOKTOP CUT OUT
2402 07Aug20 NoCat	1	KITCHEN: UPGRADE TO 3CM COUNTER TOP
2402 07Aug20 NoCat	1	.MASTER ENSUITE: RAISE VANITY TO 36" HEIGHT
2402 07Aug20 NoCat	1	.ENSUITE 2: RAISE VANITY HEIGHT TO 36"









# CONSTRUCTION SUMMARY

Lot: 119

Model: 40.01 A SUMMERDALE

Project/Phase: Pine Valley Forevergreen / 1

NETWORK AND WIRING		
Invoice	Qty.	Description
2281 72,259 07Aug20	1	FAMILY ROOM: CONDUIT PIPE - FOR WALL MOUNT TV - LOCATE APPROX. 48" A.F.F. TERMINATING DIRECTLY BELOW AT CABLE/PHONE/CAT 6 LOCATION - SEE PLAN FOR LOCATION
2281 72,258 07Aug20	1	FAMILY ROOM / STUDY / MASTER BEDROOM / COMPUTER NICHE: ADDITIONAL CAT6 ETHERNET OUTLET - EACH SEE PLAN FOR LOCATION  **PACKAGE PRICE**

PAINT		
Invoice	Qty.	Description
2281  07Aug20 NoCat	1	.STUDY: ADD OPTIONAL DOUBLE FRENCH DOOR #203 FLAT GLASS COMPLETE WITH BUILDERS STANDARD OFFERINGS
2402  07Aug20 NoCat	1	STAIRS: MAIN TO 2ND FLOOR + MAIN TO BASEMENT: STAIN STAIRS AND LANDINGS UPGRADE 1  STAIR STAINS COMPLIMENT HARDWOOD FLOOR SELECTION. STAIR STAIN IS NOT AN EXACT MATCH TO HARDWOOD FLOORS.

PLUMBING		
Invoice	Qty.	Description
2281 72,332 07Aug20	1	KITCHEN: ROUGH-IN 1/4" COLD WATER LINE TO FRIDGE
2281  07Aug20 NoCat	1	.RELOCATE LAUNDRY ROOM FROM GROUND FLOOR TO BASEMENT
2281  07Aug20 NoCat	1	***CUSTOM LAYOUT*** MASTER ENSUITE: DELETE WATER CLOSET, SQUARE OFF WALK-IN CLOSET, LOCATE TOILET BESIDE VANITY - SEE PLAN FOR REVISION

PLUMBING FIXTURES		
Invoice	Qty.	Description
2402  07Aug20 NoCat	1	KITCHEN: UPGRADE SINK TO BLANCO QUATRUS R15 U 1-3/4 STAINLESS STEEL #401520  BOTTOM GRID NOT INCLUDED

STAIR AND RAILINGS		
Invoice	Qty.	Description
2402 93,948 07Aug20	1	UPGRADE - EURONLINE # 1, 3" HALF-ROUND W/V-GROOVE HANDRAIL, 3 1/2" ALL SQUARE POST WITH PYRAMID TOP POST CAP - PACKAGE D

SCHEDULE 'F'



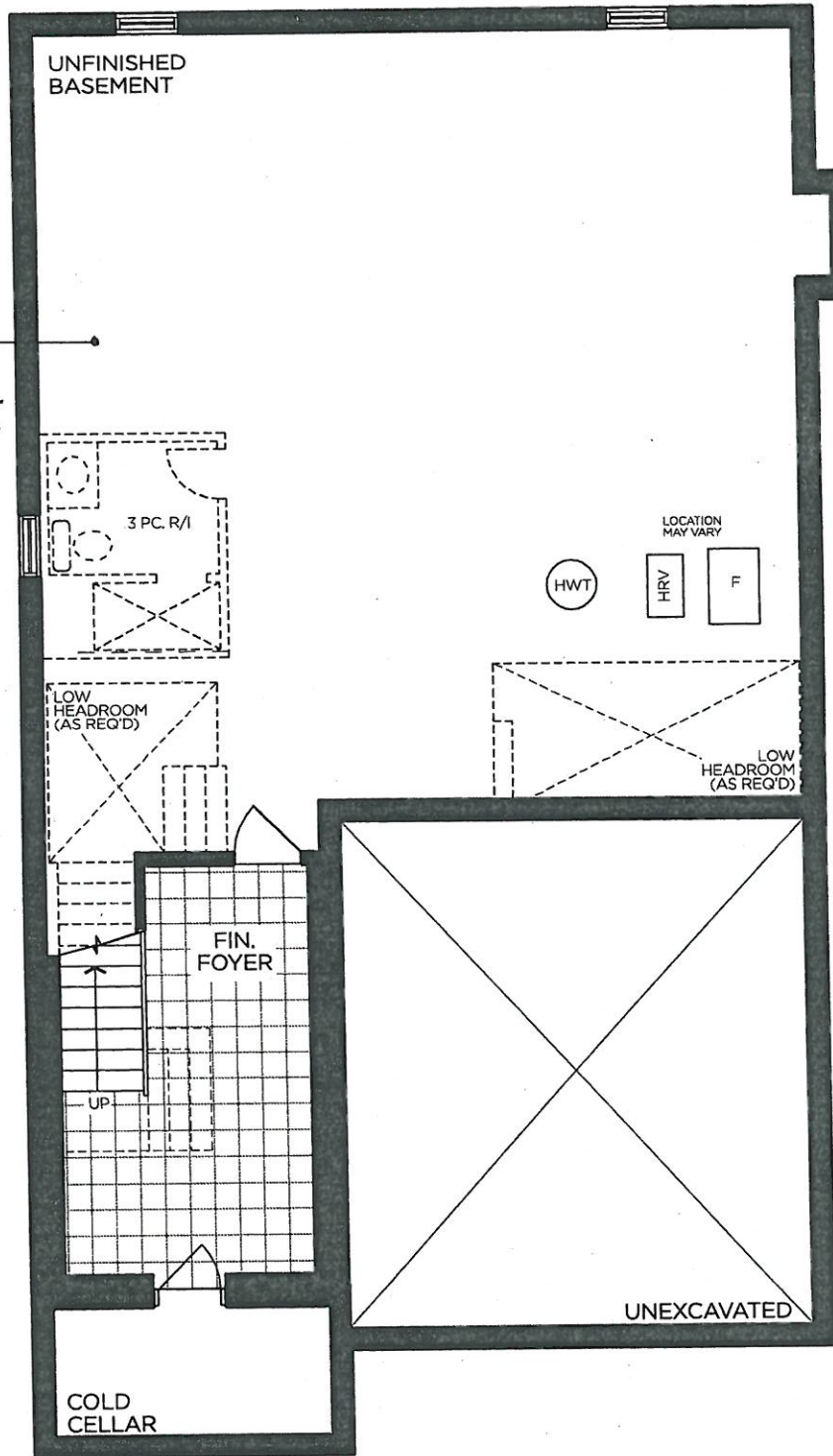
PV-119 *see attached*  
 APRIL 14 2020 *see attached*  
 July 2 2020 *see attached*

# The Summerdale

## 40' SERIES

→ Elevation A • 2,895 sq.ft.  
 Elevation B • 2,880 sq.ft.

RELOCATE  
 Laundry  
 to BASEMENT



BASEMENT | ELEV. A

VENDOR

PURCHASER

PURCHASER


**GOLDPARK**  
 WORTH MORE™

Prices, figures, illustrations, sizes, features and finishes are subject to change without notice. Areas and dimensions are approximate and actual usable floor space may vary from the stated area. Layout may be reverse of the unit purchased. E. & O.E. 4001





SCHEDULE 'F'

PV-119 *see attached*  
April 14 2020

PV-119 *see attached*  
July 2 2020

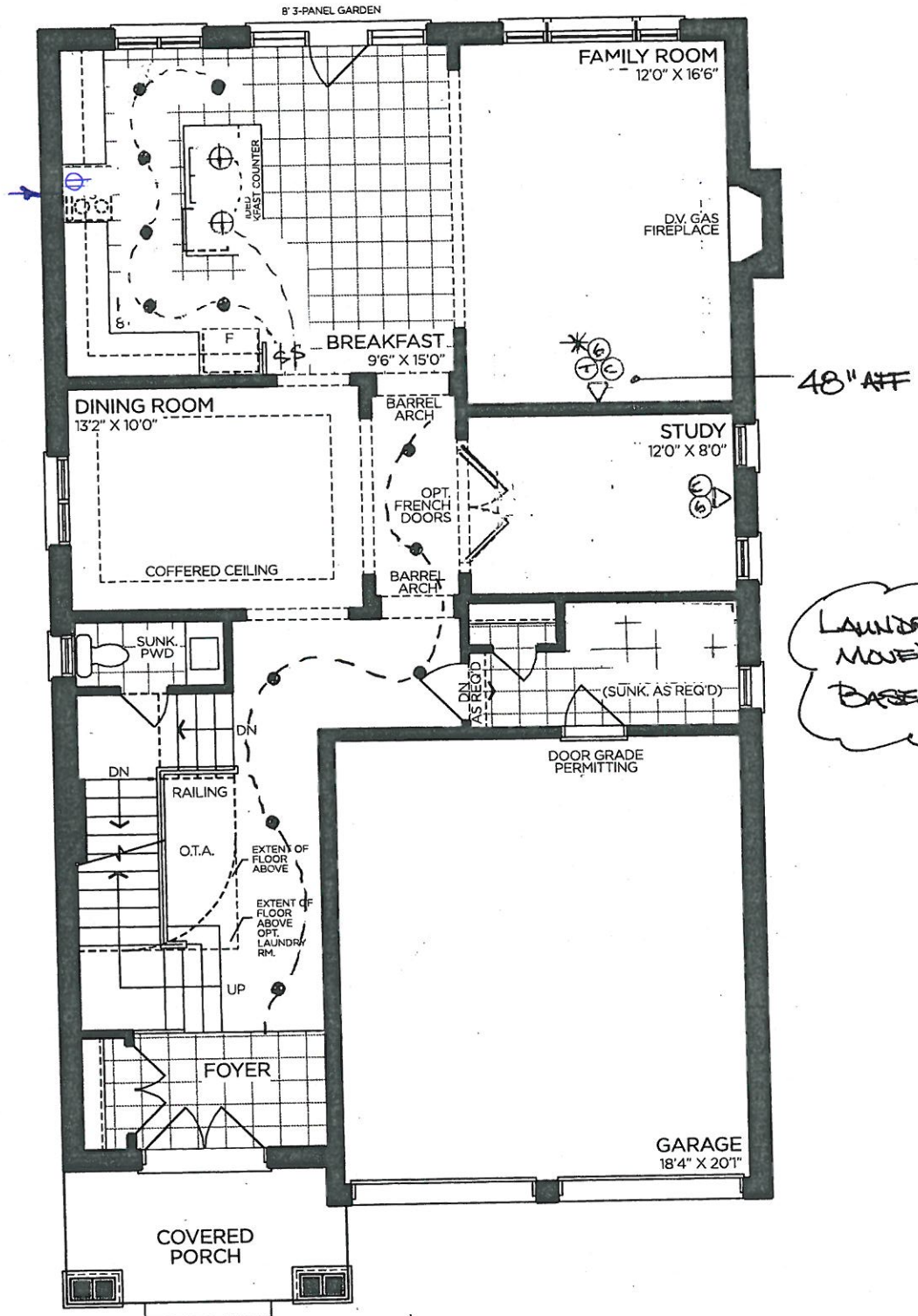
# The Summerdale

## 40' SERIES

→ Elevation A • 2,895 sq.ft.  
Elevation B • 2,880 sq.ft.

B/I.N. OPEN  
Below ELEV  
CLOCK TOP.

FRIDGE  
WATER LINE



GROUND FLOOR | ELEV. A

VENDOR

PURCHASER

PURCHASER

## GOLDPARK

WORTH MORE™

Prices, figures, illustrations, sizes, features and finishes are subject to change without notice. Areas and dimensions are approximate and actual usable floor space may vary from the stated area. Layout may be reverse of the unit purchased. E. & O.E. 4001

# SCHEDULE 'F'



PV-119

APRIL 14 2020

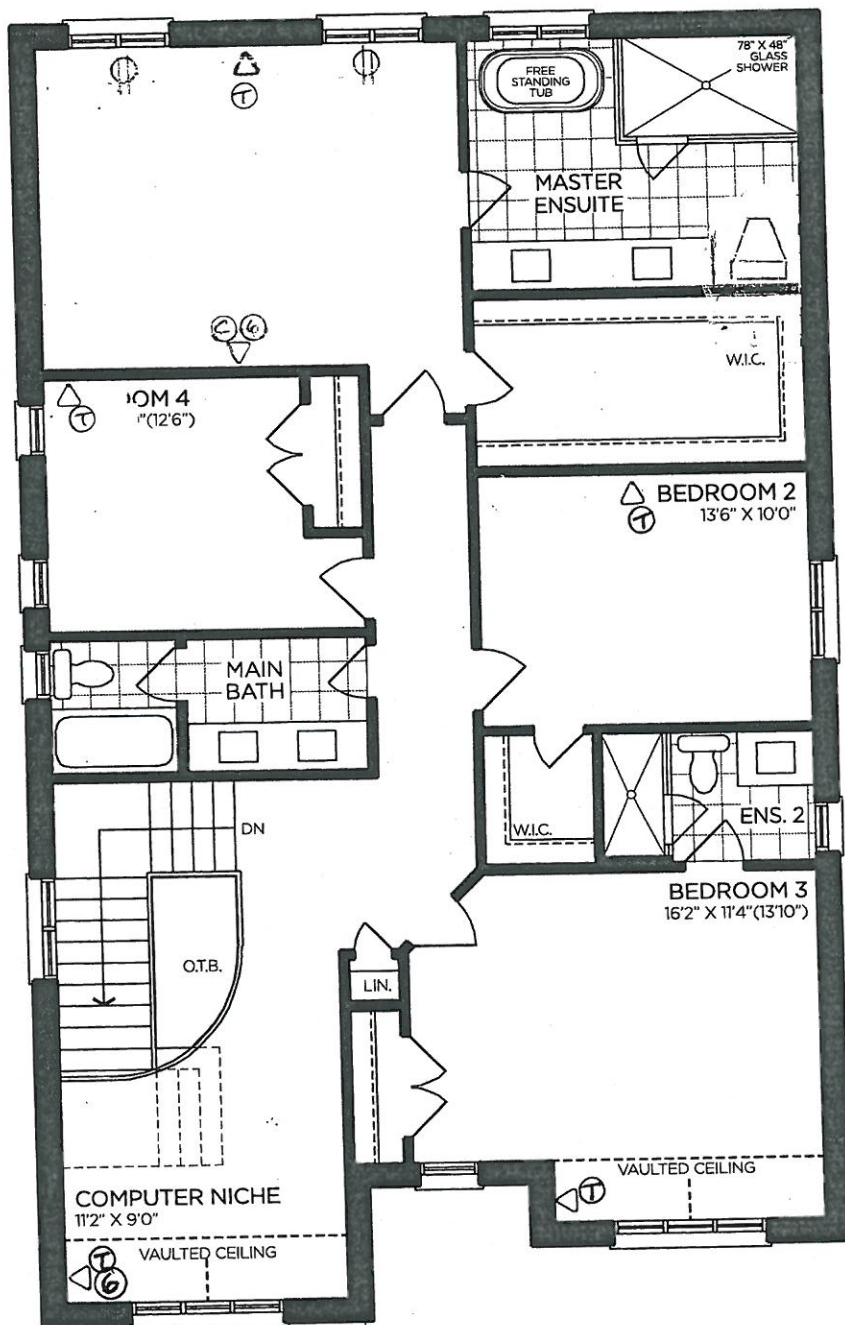
JULY 2 2020

See attached

See attached

## The Summerdale 40' SERIES

→ Elevation A • 2,895 sq.ft.  
Elevation B • 2,880 sq.ft.



SECOND FLOOR | ELEV. A

VENDOR

PURCHASER

PURCHASER

**GOLDPARK**  
WORTH MORE™

Prices, figures, illustrations, sizes, features and finishes are subject to change without notice. Areas and dimensions are approximate and actual usable floor space may vary from the stated area. Layout may be reverse of the unit purchased. E. & O.E. 4001



PV-119  
July 2, 2020.  
~~See attached.~~



Stainless Steel  
KOSE500ESS

Capacity	
Oven	5.0 cu. ft.
General Features & Properties	
EasyConvect™ Conversion System	
Even-Heat™ Preheat	
Self-Cleaning Cycle	
FIT System Guarantee	
Professionally-Inspired Design	
Even-Heat™ True Convection Oven	
Temperature Probe	
Electrical Details	
Amps	20
Volts	240
Certifications	
ADA Compliant	Yes

Technical Details	
Fuel Type	Electric
Oven Type	Single
Oven Cooking System	Convection
Number of Oven Racks	3
Cleaning Type	Adjustable Self-Cleaning
Dimensions	
Product Dimensions (H x W x D)	28-3/4" x 30" x 27-1/8"
Depth with Door Open 90°	46-3/4"
Cutout Dimensions (H x W x D)	28" x 28-1/2" x 24"
Reference Material	
<a href="#">Dimension Guide</a>	
<a href="#">Install Guide</a>	
<a href="#">Use &amp; Care Guide</a>	
<a href="#">Warranty</a>	

Key Features & Benefits

Glass-Touch Display with Control Lock Function

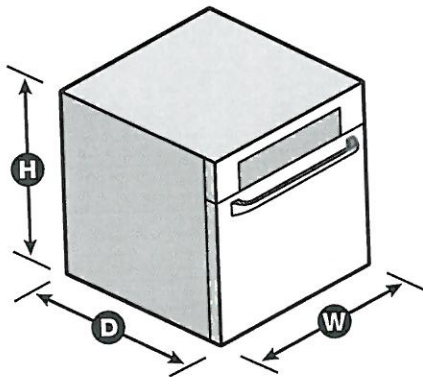
Gives an intuitive glass touch screen experience that's easy to wipe clean.

SatinGlide™ Roll-Out Extension Rack

Allows easy loading and features an easy-grip handle, giving you confidence when cooking with large or heavy dishes.

5.0 Cu. Ft. Capacity

Gives you an extra-large capacity for holding your largest turkeys and roasts. It also lets you prepare multiple dishes at the same time.



NOTE: Dimensions are for planning purposes only. For complete details, see Installation Instructions packed with product. Specifications subject to change without notice.  
©/™ © 2020. All rights reserved. Printed in the U.S.A. D200104XXE. KOSE500ESpecSheetV01.

# KitchenAid® 30" (76.2 CM) ELECTRIC INDUCTION COOKTOP

## PRODUCT MODEL NUMBERS

KICU500X

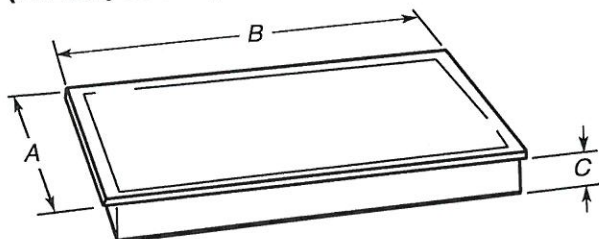
## ELECTRICAL REQUIREMENTS:

To properly install your cooktop, you must determine the type of electrical connection you will be using and follow the instructions provided for it here.

- A 4-wire or 3-wire, single phase, 240 volt, 60 Hz., AC only electrical supply is required on a separate, 40-amp circuit (30" [76.2 cm] models), fused on both sides of the line.
- The cooktop should be connected directly to the junction box through flexible, armored or nonmetallic sheathed, copper cable. The flexible, armored cable extending from the fuse box or circuit breaker box should be connected directly to the junction box.
- Locate the junction box to allow as much slack as possible between the junction box and the cooktop so that the cooktop can be moved if servicing becomes necessary in the future.
- Do not cut the conduit. The length of conduit provided is for serviceability of the cooktop.
- A UL listed or CSA approved conduit connector must be provided at each end of the power supply cable (at the cooktop and at the junction box). A listed conduit connector is already provided at the cooktop.

## PRODUCT DIMENSIONS

### 30" (76.2 cm) Cooktops

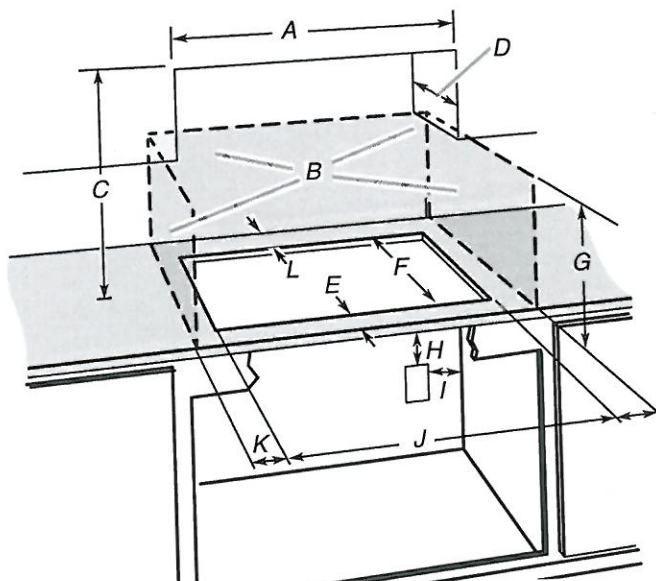


#### Model KICU500

- A. 21 $\frac{5}{16}$ " (54.1 cm)
- B. 30 $\frac{3}{4}$ " (78.2 cm)
- C. 2 $\frac{3}{8}$ " (6.0 cm)

## CABINET DIMENSIONS

**IMPORTANT:** If installing a range hood or microwave hood combination above the range, follow the range hood or microwave hood combination installation instructions for dimensional clearances above the cooktop surface.



- A. 29 $\frac{1}{2}$ " (75.0 cm) on 30" (76.2 cm) models
- B. Combustible area above countertop (shown by dashed box above)
- C. 30" (76.2 cm) minimum clearance between top of cooktop platform and bottom of uncovered wood or metal cabinet (24" [61 cm] minimum clearance if bottom of wood or metal cabinet is covered by not less than  $\frac{1}{4}$ " [0.6 cm] flame retardant millboard covered with not less than No. 28 MSG sheet steel, 0.015" [0.04 cm] stainless steel, or 0.024" [0.06 cm] aluminum or 0.020" [0.05 cm] copper)
- D. 13" (33.0 cm) recommended upper cabinet depth
- E. 2" (5.1 cm)
- F. 19 $\frac{5}{16}$ " (49.0 cm)
- G. 18" (45.7 cm) minimum clearance from upper cabinet to countertop within minimum horizontal clearances to cooktop
- H. Junction box or outlet; 12" (30.5 cm) minimum from bottom of countertop
- I. Junction box or outlet; 10" (25.4 cm) from right-hand side of cabinet
- J. 29 $\frac{1}{2}$ " (75.0 cm) on 30" (76.2 cm) models
- K. 1" (2.5 cm) minimum distance to nearest left and right side combustible surface above cooktop
- L. 1" (2.5 cm) minimum clearance between back wall and countertop

**NOTES:** After you make the countertop cutout, some installations may require notching down the base cabinet side walls to clear the cooktop base. To avoid this modification, use a base cabinet with sidewalls wider than the cutout.

If cabinet has a drawer, a 5 $\frac{1}{8}$ " (13 cm) depth clearance from the countertop to the top of the drawer (or other obstruction) in base cabinet is required.

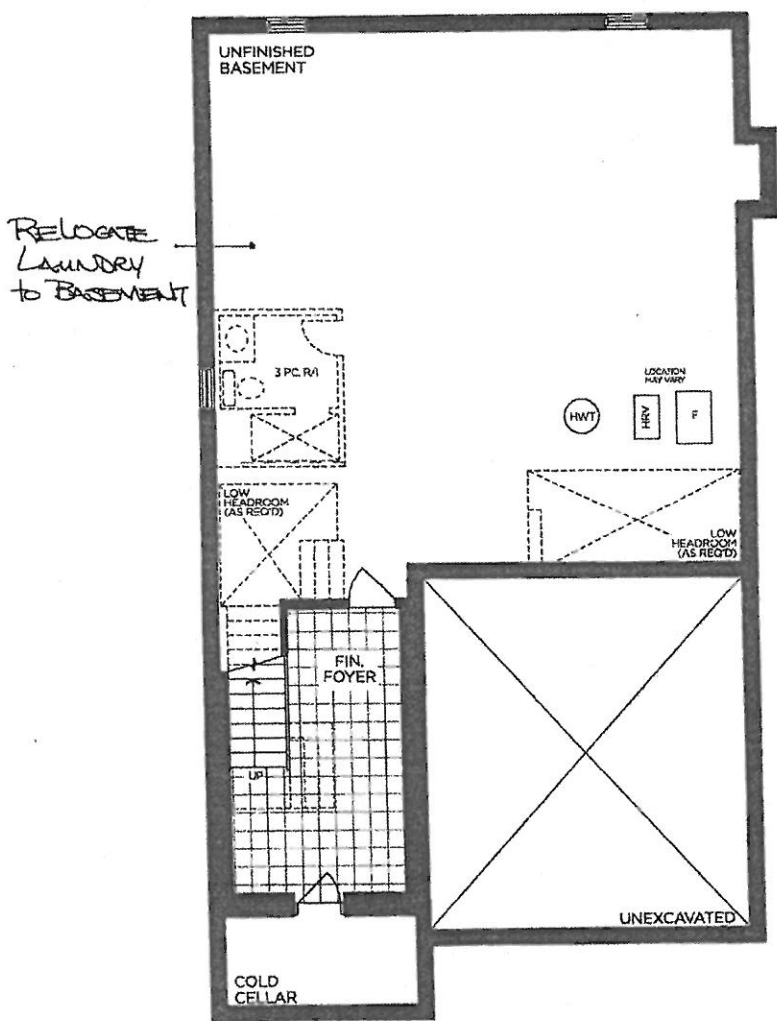
SCHEDULE 'F'



PV-119 <sup>attached</sup>  
April 14 2020 <sup>attached</sup>  
July 2 2020 <sup>MG</sup>

The Summerdale  
40' SERIES

Elevation A • 2,895 sq.ft.  
Elevation B • 2,880 sq.ft.



BASEMENT | ELEV. A

VENDOR

PURCHASER

PURCHASER

GOLDPARK  
WORTH MORE

Prices, figures, illustrations, sizes, features and finishes are subject to change without notice. Areas and dimensions are approximate and actual usable floor space may vary from the stated area. Layout may be reverse of the unit purchased. E. & O.E. 4001



SCHEDULE 'F'

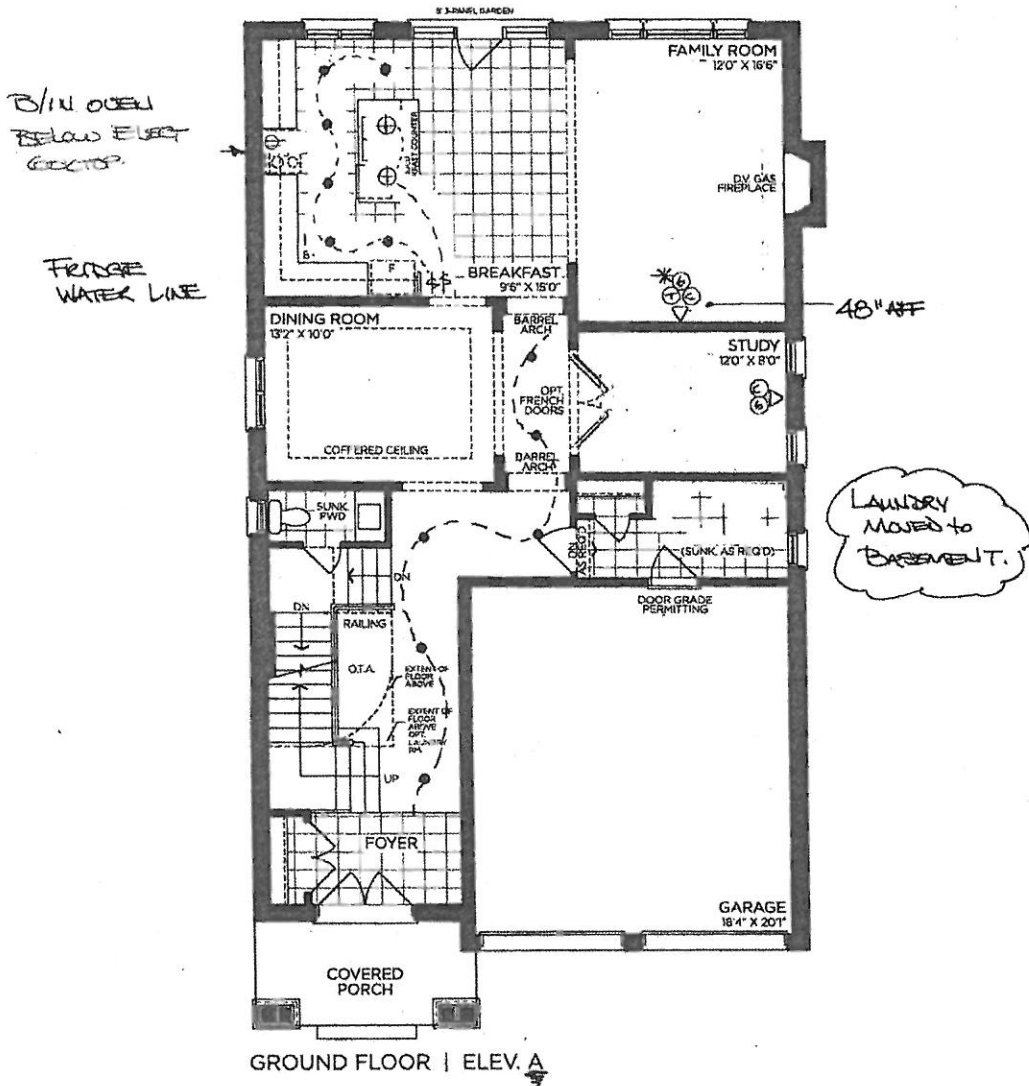
PV-119 <sup>see attached</sup>  
April 14 2020

PV-119 <sup>MG</sup>  
July 2 2020

# The Summerdale

## 40' SERIES

→ Elevation A • 2,895 sq.ft.  
Elevation B • 2,880 sq.ft.



VENDOR

PURCHASER

PURCHASER

**GOLDPARK**  
WORTH MORE™

Prices, figures, illustrations, sizes, features and finishes are subject to change without notice. Areas and dimensions are approximate and actual usable floor space may vary from the stated area. Layout may be reverse of the unit purchased. E. & O.E. 4001



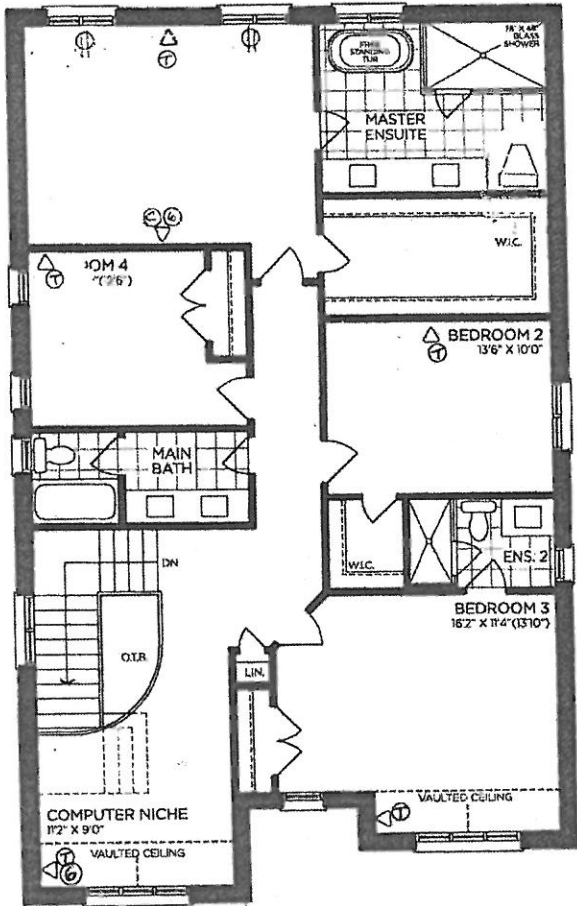
SCHEDULE 'F'



PV-119  
APRIL 14 2020  
JULY 2 2020  
*Handwritten notes: "Set", "Set", "MG", and a signature.*

The  
**Summerdale**  
40' SERIES

→ Elevation A • 2,895 sq.ft.  
Elevation B • 2,880 sq.ft.



SECOND FLOOR | ELEV. A

VENDOR

PURCHASER

PURCHASER

**GOLDPARK**  
WORTH MORE™

Prices, figures, illustrations, sizes, features and finishes are subject to change without notice. Areas and dimensions are approximate and actual usable floor space may vary from the stated area. Layout may be reverse of the unit purchased. E. & O.E. 4001

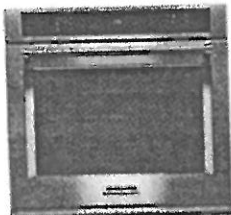
**KitchenAid®** 30" Single Wall Oven  
KOSE500E

PV-114

July 2, 2020

WG

1/2



Stainless Steel  
KOSE500ESS

Capacity	
Oven	5.0 cu. ft.
General Features & Properties	
EasyConvect™ Conversion System	
Even-Heat™ Preheat	
Self-Cleaning Cycle	
FIT System Guarantee	
Professionally-Inspired Design	
Even-Heat™ True Convection Oven	
Temperature Probe	
Electrical Details	
Amps	20
Volts	240
Certifications	
ADA Compliant	Yes

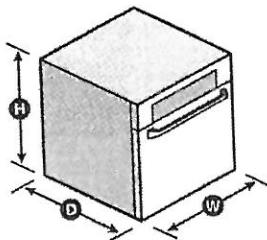
Technical Details	
Fuel Type	Electric
Oven Type	Single
Oven Cooking System	Convection
Number of Oven Racks	3
Cleaning Type	Adjustable Self-Clean
Dimensions	
Product Dimensions (H x W x D)	28-3/4" x 30" x 27-1/8"
Depth with Door Open 90°	46-8/4"
Cutout Dimensions (H x W x D)	28" x 28-1/2" x 24"
Reference Material	
<a href="#">Dimension Guide</a>	
<a href="#">Install Guide</a>	
<a href="#">Use &amp; Care Guide</a>	
<a href="#">Warranty</a>	

**Key Features & Benefits**

**Glass-Touch Display with Control Lock Function**  
Gives an intuitive glass touch screen experience that's easy to wipe clean.

**SatinGlide™ Roll-Out Extension Rack**  
Allows easy loading and features an easy-grip handle, giving you confidence when cooking with large or heavy dishes.

**5.0 Cu. Ft. Capacity**  
Gives you an extra-large capacity for holding your largest turkeys and roasts. It also lets you prepare multiple dishes at the same time.



NOTE: Dimensions are for planning purposes only. For complete details, see Installation Instructions packed with product. Specifications subject to change without notice.  
©/™ 2020. All rights reserved. Printed in the U.S.A. D200104XXE. KOSE500ESpecSheetV01.



**KitchenAid® 30" (76.2 CM) ELECTRIC INDUCTION COOKTOP**

**PRODUCT MODEL NUMBERS**

KICU500X

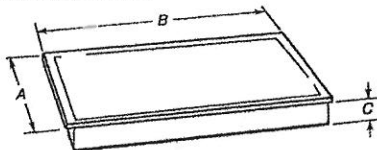
**ELECTRICAL REQUIREMENTS:**

To properly install your cooktop, you must determine the type of electrical connection you will be using and follow the instructions provided for it here.

- A 4-wire or 3-wire, single phase, 240 volt, 60 Hz., AC only electrical supply is required on a separate, 40-amp circuit (30" [76.2 cm] models), fused on both sides of the line.
- The cooktop should be connected directly to the junction box through flexible, armored or nonmetallic sheathed, copper cable. The flexible, armored cable extending from the fuse box or circuit breaker box should be connected directly to the junction box.
- Locate the junction box to allow as much slack as possible between the junction box and the cooktop so that the cooktop can be moved if servicing becomes necessary in the future.
- Do not cut the conduit. The length of conduit provided is for serviceability of the cooktop.
- A UL listed or CSA approved conduit connector must be provided at each end of the power supply cable (at the cooktop and at the junction box). A listed conduit connector is already provided at the cooktop.

**PRODUCT DIMENSIONS**

**30" (76.2 cm) Cooktops**

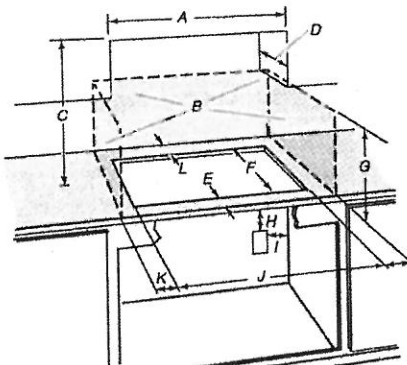


Model KICU500

- A. 21 $\frac{1}{4}$ " (54.1 cm)
- B. 30 $\frac{3}{4}$ " (78.2 cm)
- C. 2 $\frac{3}{4}$ " (6.0 cm)

**CABINET DIMENSIONS**

**IMPORTANT:** If installing a range hood or microwave hood combination above the range, follow the range hood or microwave hood combination installation instructions dimensional clearances above the cooktop surface.



- A. 29 $\frac{1}{2}$ " (75.0 cm) on 30" (76.2 cm) models
- B. Combustible area above countertop (shown by dashed box above)
- C. 30" (76.2 cm) minimum clearance between top of cooktop platform and bottom of uncovered wood or metal cabinet (24" [61 cm] minimum clearance if bottom of wood or metal cabinet is covered by not less than  $\frac{1}{4}$ " [0.6 cm] flame retardant millboard covered with not less than No. 28 MSG sheet steel, 0.016" [0.04 cm] stainless steel, or 0.024" [0.06 cm] aluminum or 0.020" [0.05 cm] copper)
- D. 13" (33.0 cm) recommended upper cabinet depth
- E. 2" (5.1 cm)
- F. 19 $\frac{1}{2}$ " (49.0 cm)
- G. 18" (45.7 cm) minimum clearance from upper cabinet to countertop within minimum horizontal clearances to cooktop
- H. Junction box or outlet; 12" (30.5 cm) minimum from bottom of countertop
- I. Junction box or outlet; 10" (25.4 cm) from right-hand side of cabinet
- J. 29 $\frac{1}{2}$ " (75.0 cm) on 30" (76.2 cm) models
- K. 1" (2.5 cm) minimum distance to nearest left and right side combustible surface above cooktop
- L. 1" (2.5 cm) minimum clearance between back wall and countertop

**NOTES:** After you make the countertop cutout, some installations may require not down the base cabinet side walls to clear the cooktop base. To avoid this modification a base cabinet with sidewalls wider than the cutout.

If cabinet has a drawer, a 5 $\frac{1}{2}$ " (13 cm) depth clearance from the countertop to the top of the drawer (or other obstruction) in base cabinet is required.