

GOLDPARK

WORTH MORE™

CONSTRUCTION SUMMARY

Lot: 131

Model: 38-8 Elev.B CORELLI OPT - GFA1 AND SFA4

Project/Phase: Brampton Encore / 2

CENTRAL VAC AND WIRING

Invoice	Qty.	Description
2230 31659 04May20	1	FAMILY ROOM: CONDUIT PIPE- FOR TELEVISION- LOCATE APPROX. 66" A.F.F. ABOVE FIREPLACE, TERMINATING AT CABLE

ELECTRICAL

Invoice	Qty.	Description
2230 31663 04May20	1	FAMILY ROOM: 110V WALL RECEPTACLE ON DEDICATED CIRCUIT- LOCATE APPROX. 66" A.F.F. ABOVE FIREPLACE
2230 31668 04May20 NoCat	2	KITCHEN: CAPPED CEILING ROUGH-IN ABOVE ISLAND
2230 31669 04May20 NoCat	1	KITCHEN: SINGLE POLE SWITCH FOR ISLAND CEILING ROUGH-IN
2230 31670 04May20	1	220V WALL RECEPTICAL ON DEDICATED CIRCUIT- FOR 4 WIRE BUILT-IN WALL OVEN - MUST SPECIFY LOCATION
2230 31674 04May20	1	200 AMP ELECTRICAL SERVICE
2230 31681 04May20	1	KITCHEN: 110V WALL RECEPTACLE ON DEDICATED CIRCUIT - GAS FIRED APPLIANCE - FOR AUX. EQUIPMENT - NOT A STOVE PLUG
2230 33162 04May20 NoCat	1	**REVISE LAYOUT** KITCHEN: RELOCATE SINK AND DISHWASHER FROM ISLAND TO PERIMETER, EXTEND CABINETRY/COUNTER TOP APPROX 48" TO ACCOMMODATE - SEE PLAN FOR LOCATION

EXTERIOR COLOURS

Invoice	Qty.	Description
2230 32604 04May20 NoCat	1	EXTERIOR COLOUR PACKAGE # 7

FORMING

Invoice	Qty.	Description
2230 31676 04May20 **	2	BASEMENT WINDOWS - UPGRADE EXISTING BASEMENT WINDOW TO 30 INCH X 24 INCH - MAY REQUIRE INSTALLATION OF WINDOW WELL

ryDiscipline.rpt 14Mar20

Page 1 of 4

GOLDPARK

WORTH MORE™

CONSTRUCTION SUMMARY

Lot: 131

Model: 38-8 Elev.B CORELLI OPT - GFA1 AND SFA4

Project/Phase: Brampton Encore / 2

FRAMING

Invoice	Qty.	Description
2230 31653 04May20 NoCat	1	DINING ROOM: CLOSE ARCHWAYS AT DINING ROOM - SEE PLAN FOR LOCATION
2230 31655 04May20 NoCat	1	GROUND FLOOR: ADD INTERIOR DOOR - SEE PLAN FOR LOCATION
2230 33156 04May20 NoCat	1	DINING ROOM: ADD FRENCH DOORS (2 DOORS) - SEE PLAN FOR LOCATION
2230 33158 04May20 NoCat	3	MAIN FLOOR: STANDARD DOOR EXTENDED HEIGHT 96"

GRANITE MARBLE QUARTZ

Invoice	Qty.	Description
2230 33161 04May20 NoCat	1	**REVISE LAYOUT** KITCHEN: RELOCATE SINK AND DISHWASHER FROM ISLAND TO PERIMETER, EXTEND CABINETRY/COUNTER TOP APPROX 48" TO ACCOMMODATE - SEE PLAN FOR LOCATION

HVAC

Invoice	Qty.	Description
2230 31680 04May20	1	KITCHEN: GAS LINE ROUGH - 2ND FLOOR- (3-STOREY MODELS)

INTERIOR DOORS

Invoice	Qty.	Description
2230 31654 04May20 NoCat	1	DINING ROOM: ADD FRENCH DOORS (2 DOORS) - SEE PLAN FOR LOCATION

ryDiscipline.rpt 14Mar20

Page 2 of 4

GOLDPARK

WORTH MORE™

CONSTRUCTION SUMMARY

Lot: 131

Model: 38-8 Elev.B CORELLI OPT - GFA1 AND SFA4

Project/Phase: Brampton Encore / 2

INTERIOR TRIM AND DOORS

Invoice	Qty.	Description
2230 31687 04May20	3	MAIN FLOOR: STANDARD DOOR EXTENDED HEIGHT 96"
2230 33150 04May20 NoCat	1	DINING ROOM: ADD FRENCH DOORS (2 DOORS) - SEE PLAN FOR LOCATION
2230 33153 04May20 NoCat	1	GROUND FLOOR: ADD INTERIOR DOOR - SEE PLAN FOR LOCATION
2230 33154 04May20 NoCat	1	DINING ROOM: CLOSE ARCHWAYS AT DINING ROOM - SEE PLAN FOR LOCATION

KITCHEN AND BATH CABINETRY

Invoice	Qty.	Description
2230 33160 04May20 NoCat	1	**REVISE LAYOUT** KITCHEN: RELOCATE SINK AND DISHWASHER FROM ISLAND TO PERIMETER, EXTEND CABINETRY/COUNTER TOP APPROX 48" TO ACCOMMODATE - SEE PLAN FOR LOCATION

MISC.


Invoice	Qty.	Description
2230 31704 04May20 NoCat	1	Purchaser has attended an appointment at the Decor Centre & has DECLINED any additional upgrades and accepts & acknowledges that there will be no further changes/additions/deletions to be made upon signing on March 20, 2020.
2230 31705 04May20 NoCat	1	BONUS PACKAGE: \$10,000.00 (INCLUDING TAXES) WORTH OF UPGRADES FROM GOLD PARK HOMES DÉCOR CENTRE IS BEING APPLIED TOWARD THIS ORDER. PURCHASER HAS A REMAINING AMOUNT OF \$00 (INCLUDING TAXES).

PAINT

Invoice	Qty.	Description
2230 33152 04May20 NoCat	1	GROUND FLOOR: ADD INTERIOR DOOR - SEE PLAN FOR LOCATION
2230 33157 04May20 NoCat	1	DINING ROOM: ADD FRENCH DOORS (2 DOORS) - SEE PLAN FOR LOCATION

ryDiscipline.rpt 14Mar20

Page 3 of 4



CONSTRUCTION SUMMARY

Lot: 131

Model: 38-8 Elev.B CORELLI OPT - GFA1 AND SFA4

Project/Phase: Brampton Encore / 2

PLUMBING		
Invoice	Qty.	Description
2230 31658 04May20 NoCat	1	**REVISE LAYOUT** KITCHEN: RELOCATE SINK AND DISHWASHER FROM ISLAND TO PERIMETER, EXTEND CABINETRY/COUNTER TOP APPROX 48" TO ACCOMMODATE - SEE PLAN FOR LOCATION  BASED ON STANDARD FINISHES
2230 31688 04May20	1	KITCHEN: ROUGH-IN - WATERLINE FOR FRIDGE

WINDOWS - BASEMENT		
Invoice	Qty.	Description
2230 31676 04May20	2	BASEMENT WINDOWS - UPGRADE EXISTING BASEMENT WINDOW TO 30 INCH X 24 INCH - MAY REQUIRE INSTALLATION OF WINDOW WELL

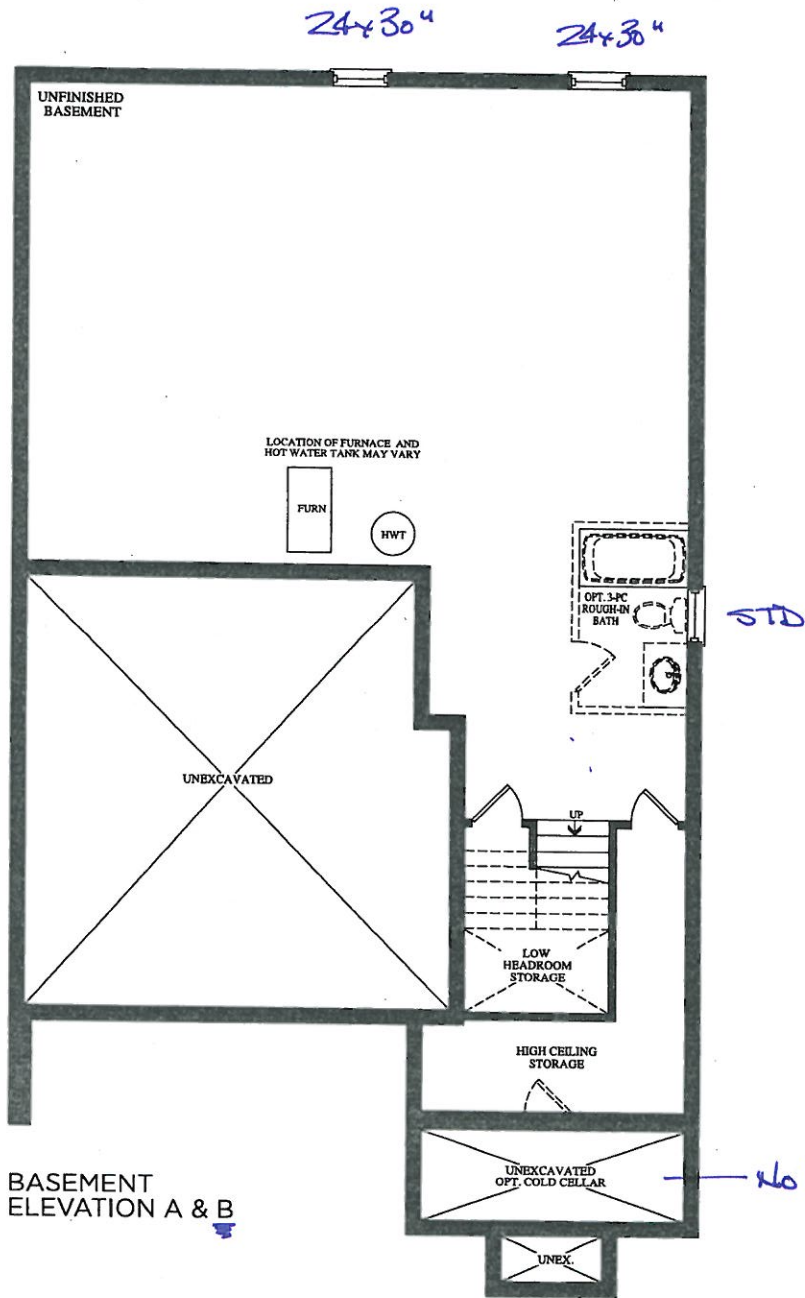
WINDOWS AND DOORS		
Invoice	Qty.	Description
2230 33151 04May20 NoCat	1	GROUND FLOOR: ADD INTERIOR DOOR - SEE PLAN FOR LOCATION
2230 33155 04May20 NoCat	1	DINING ROOM: ADD FRENCH DOORS (2 DOORS) - SEE PLAN FOR LOCATION
2230 33159 04May20 NoCat	3	MAIN FLOOR: STANDARD DOOR EXTENDED HEIGHT 96"

This Document is Extremely Time Sensitive - Printed 4 May 20 at 12:09

BEZ-131 see attached.  
MAR 20 2020

The  
Corelli  
38' SERIES

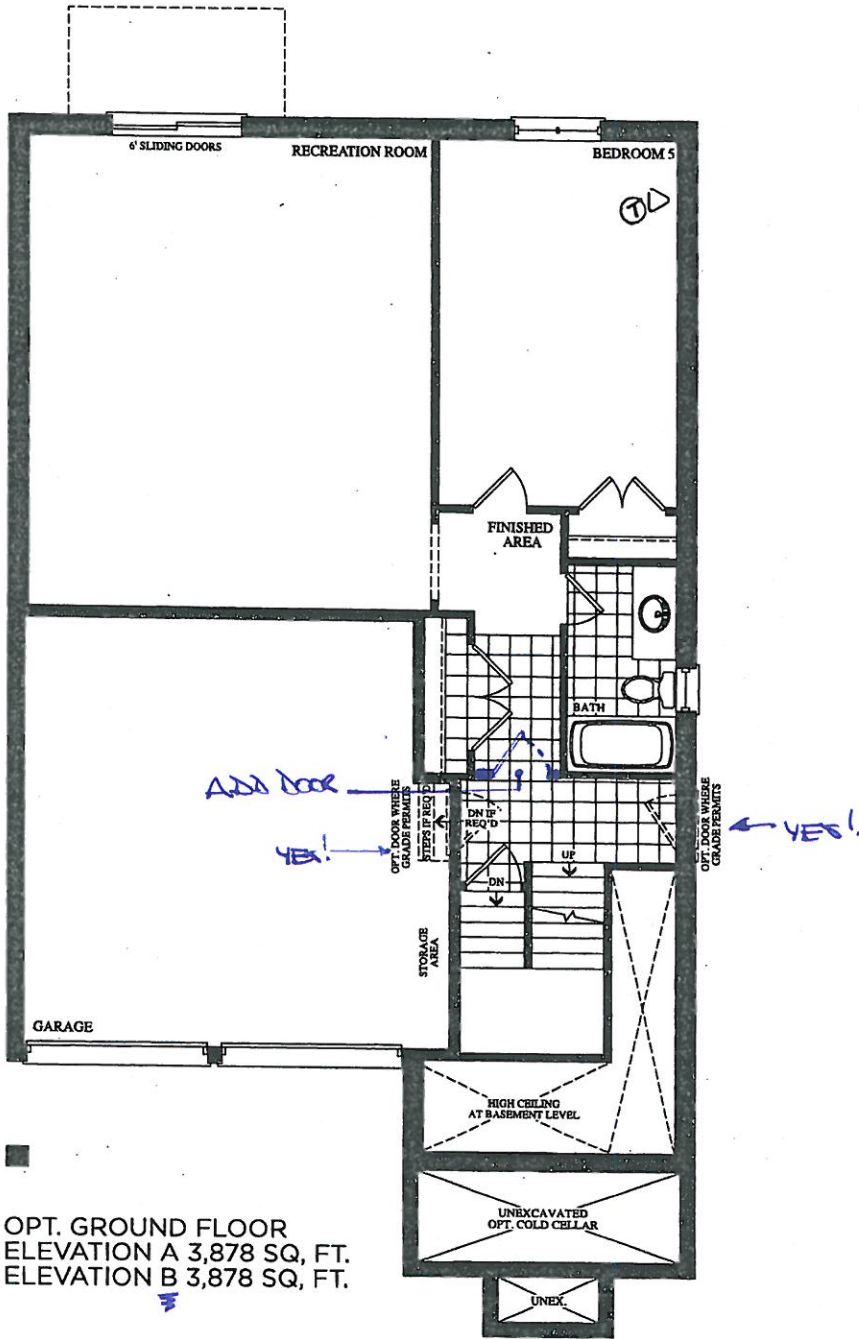
Elevation A • 3,878 sq.ft. | Elevation B • 3,878 sq.ft.



BE2-131  
March 20 2020  
*See attached*

The  
Corelli  
38' SERIES

Elevation A • 3,878 sq.ft. | Elevation B • 3,878 sq.ft.

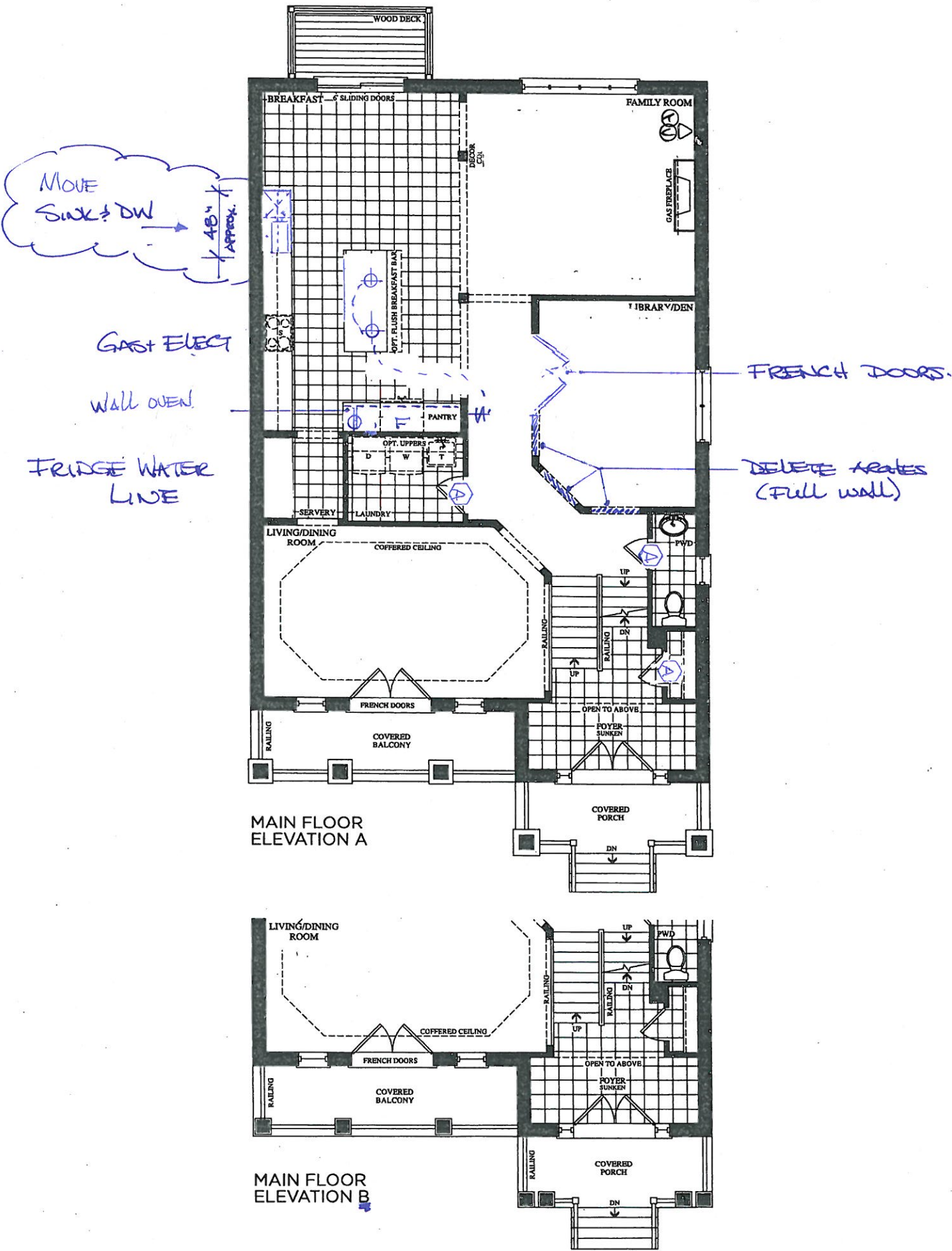




BE2-131 see attach  
MAR 26 2020

The  
Corelli  
38' SERIES

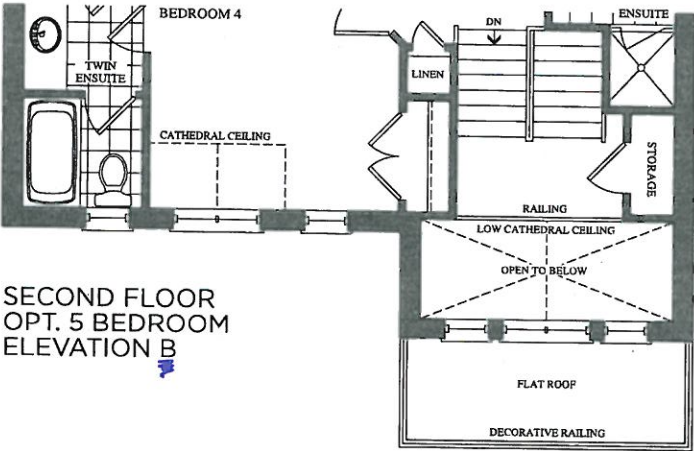
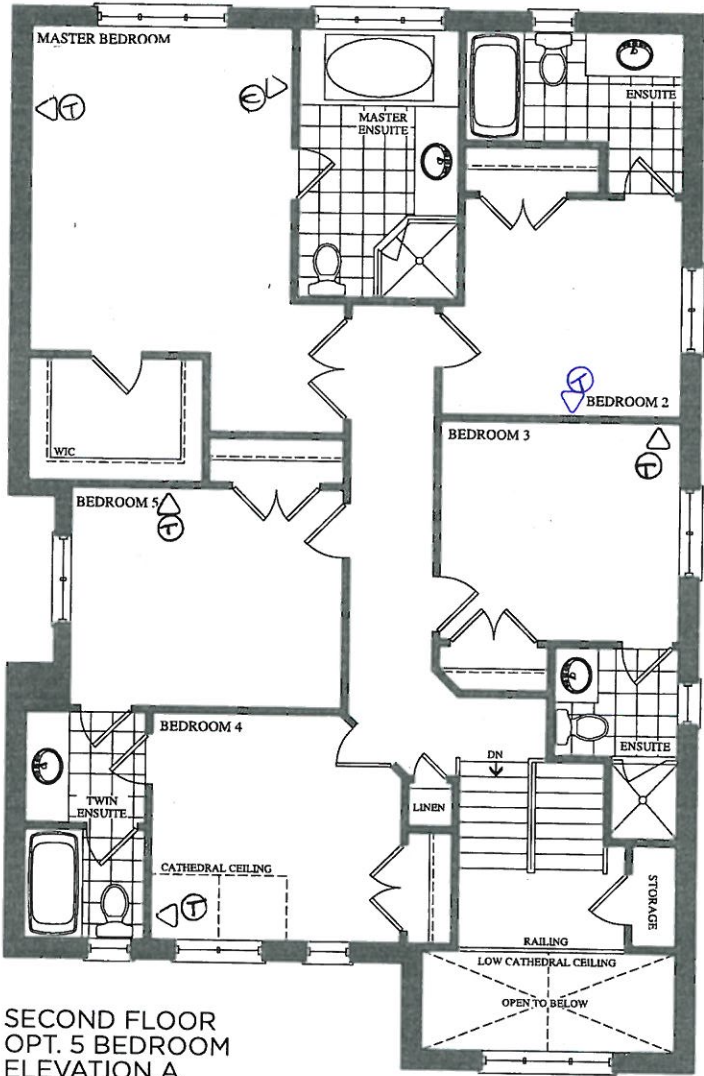
Elevation A • 3,878 sq.ft. | Elevation B • 3,878 sq.ft.



see sketch  
BE2-131  
APRIL 8 2022

The  
Corelli  
38' SERIES

Elevation A • 3,878 sq.ft. | Elevation B • 3,878 sq.ft.



Prices, figures, illustrations, sizes, features and finishes are subject to change without notice. E.&O.E. Areas and dimensions are approximate and actual usable floor space may vary from the stated area. Layout may be reverse of the unit purchased. E. & O.E.

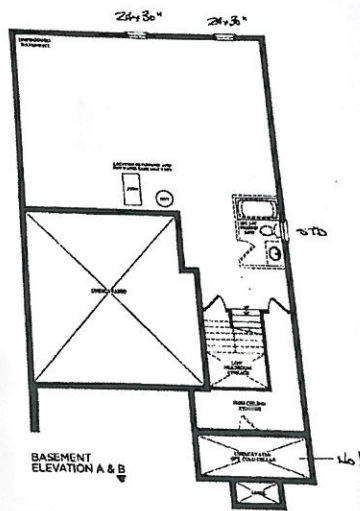


encore  
BRANFTON

36  
MAR 2 2023

The  
Corelli  
38' SERIES

Elevation A - 3,878 sq.ft. | Elevation B - 3,878 sq.ft.



Final figures, illustrations, plans, fixtures and finishes are subject to change without notice. EAGS Area and dimensions are approximate and actual inside floor areas may vary from the stated area. A/Rat may be revised of the full purchase E & O.

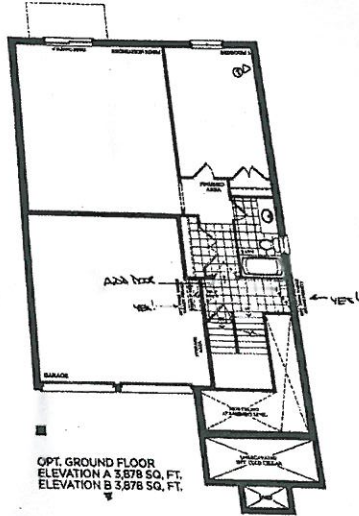
Goldpark  
HOMES

encore  
BRAMPTON

BE2-131  
March 26 2020

The  
Corelli  
38' SERIES

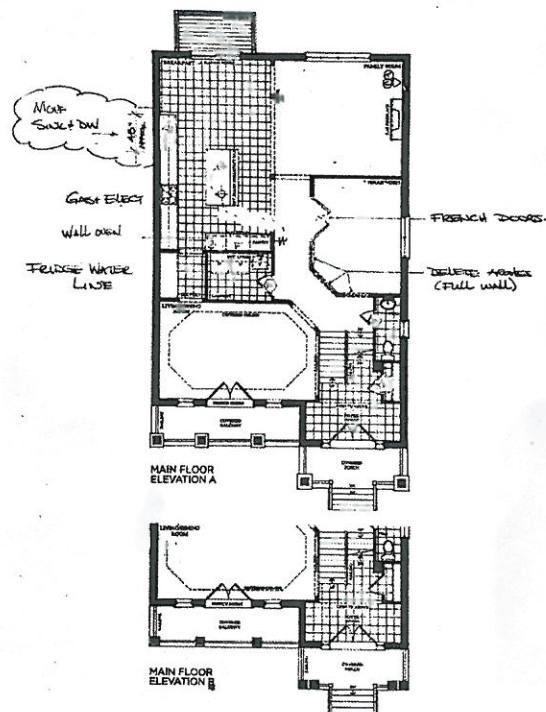
Elevation A • 3,878 sq.ft. | Elevation B • 3,878 sq.ft.



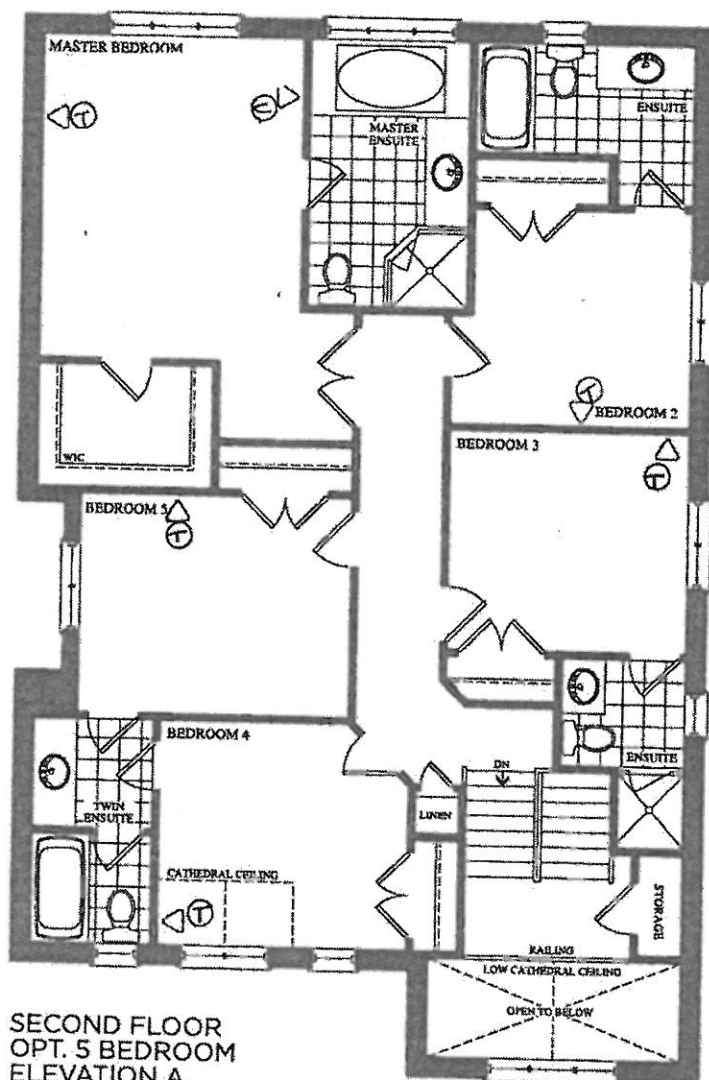
Prices, figures, dimensions, sizes, fixtures and finishes are subject to change without notice. E&OE. Areas and dimensions are approximate and actual usable floor space may vary from the stated area. Layout may be revised of the unit purchased. E & OE.

GOLDPARK  
HOME

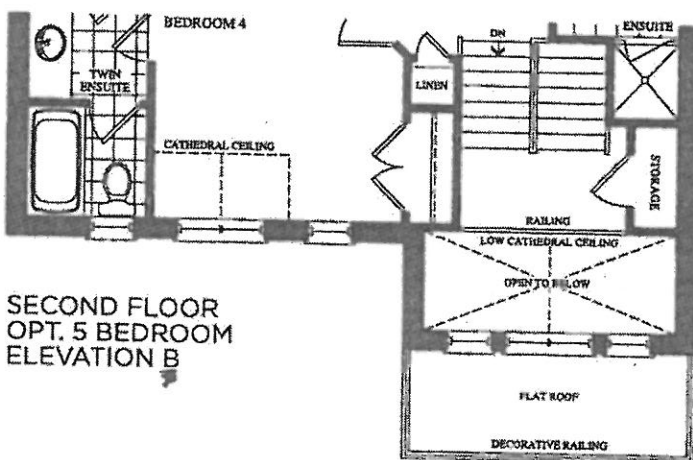
Elevation A - 3,878 sq.ft. | Elevation B - 3,878 sq.ft.



Prices, Square Footage, Features and Amenities are subject to change without notice. Eagle, Arroyo and other names are approximate and actual usable floor space may vary from the stated area. Layout may be reverse of the unit purchased. © G.C.E.



SECOND FLOOR  
OPT. 5 BEDROOM  
ELEVATION A



SECOND FLOOR  
OPT. 5 BEDROOM  
ELEVATION B