

GOLDPARK

WORTH MORE™

CONSTRUCTION SUMMARY

Lot: 111

Model: 38-8 Elev.A CORELLI OPT - GFA1

Project/Phase: Brampton Encore / 2

CENTRAL VAC AND WIRING

Invoice	Qty.	Description
2124 29833 22Apr20	1	FAMILY ROOM: CONDUIT PIPE- FOR TELEVISION- LOCATE APPROX. 66" A.F.F. ABOVE FIREPLACE, TERMINATING AT CABLE LOCATION

CERAMIC

Invoice	Qty.	Description
2124 32638 22Apr20 NoCat	1	MAIN FLOOR: CREATE LARGER SIDE ENTRANCE FOYER BY MOVING BATHROOM APPROX. 48" TO REAR. SEE PLAN FOR LOCATION.
2124 32641 22Apr20 NoCat	1	GROUND FLOOR: CREATE LARGER BATHROOM (APPROX. 48") BY MAKING BEDROOM SMALLER. SEE PLAN FOR LOCATION
2124 32733 22Apr20 NoCat	1	ENSUITE 4: UPGRADED SHOWER IN LIEU OF TUB - INCLUDES TILE BASE, POTLIGHT IN SHOWER AND FRAMED GLASS ENCLOSURE

CONCRETE AND DRAIN

Invoice	Qty.	Description
2124 29840 22Apr20 **	1	ROUGH-IN - 3PC BASEMENT ROUGH-IN

ryDiscipline.rpt 14Mar20

Page 1 of 6



FRAMING

Invoice	Qty.	Description
2124 29830 22Apr20	1	MANDOOR - GARAGE TO HOUSE- AS PER PLAN AND GRADE PERMITING  INCLUDED IN APS
2124 29828 22Apr20 NoCat	1	MAIN FLOOR LAUNDRY: RELOCATE DOOR FROM HALLWAY TO ACCESS FROM SERVERY. SEE PLAN FOR LOCATION.
2124 29832 22Apr20 NoCat	1	LIBRARY/DEN: ENLARGE OPENING OPPOSITE KITCHEN, LEAVING APPROX. 18" NIBB WALL ON FAMILY ROOM WALL. SEE PLAN FOR LOCATION
2124 29852 22Apr20 NoCat	1	MAIN FLOOR: CREATE LARGER SIDE ENTRANCE FOYER BY MOVING BATHROOM APPROX. 48" TO REAR. SEE PLAN FOR LOCATION.
2124 29853 22Apr20 NoCat	1	GROUND FLOOR: CREATE LARGER BATHROOM (APPROX. 48") BY MAKING BEDROOM SMALLER. SEE PLAN FOR LOCATION
2124 32729 22Apr20 NoCat	11	MAIN FLOOR: EXTENDED HEIGHT ARCHWAYS - 96" (3 STORY MODELS)
2124 32730 22Apr20 NoCat	3	MAIN FLOOR: STANDARD DOOR EXTENDED HEIGHT 96" MAIN FLOOR 3 STOREY MODELS - 96"
2124 32736 22Apr20 NoCat	1	ENSUITE 4: UPGRADED SHOWER IN LIEU OF TUB - INCLUDES TILE BASE, POTLIGHT IN SHOWER AND FRAMED GLASS ENCLOSURE

GLASS AND MIRROR

Invoice	Qty.	Description
2124 32734 22Apr20 NoCat	1	ENSUITE 4: UPGRADED SHOWER IN LIEU OF TUB - INCLUDES TILE BASE, POTLIGHT IN SHOWER AND FRAMED GLASS ENCLOSURE

HVAC

Invoice	Qty.	Description
2124 29843 22Apr20	1	KITCHEN: GAS LINE ROUGH - 2ND FLOOR- (3-STOREY MODELS)  INCLUDES 110V ELECTRICAL
2124 29845 22Apr20	1	HUMIDIFIER: WB3 - 17 (UP TO 3,000 SQ.FT.)
2124 29846 22Apr20 NoCat	1	4 TON A/C UNIT  LOCATE A/C UNIT AT *GARAGE SIDE* OF HOUSE. IF POSSIBLE



PAINT

Invoice	Qty.	Description
2124 29830 22Apr20 **	1	MANDOOR - GARAGE TO HOUSE- AS PER PLAN AND GRADE PERMITING  INCLUDED IN APS
2124 32632 22Apr20 NoCat	1	LIBRARY/DEN: ENLARGE OPENING OPPOSITE KITCHEN, LEAVING APPROX. 18" NIBB WALL ON FAMILY ROOM WALL. SEE PLAN FOR LOCATION
2124 32639 22Apr20 NoCat	1	MAIN FLOOR: CREATE LARGER SIDE ENTRANCE FOYER BY MOVING BATHROOM APPROX. 48" TO REAR. SEE PLAN FOR LOCATION.
2124 32640 22Apr20 NoCat	1	GROUND FLOOR: CREATE LARGER BATHROOM (APPROX. 48") BY MAKING BEDROOM SMALLER. SEE PLAN FOR LOCATION
2124 32644 22Apr20 NoCat	1	GROUND FLOOR: CREATE LARGER BATHROOM (APPROX. 48") BY MAKING BEDROOM SMALLER. SEE PLAN FOR LOCATION

PLUMBING

Invoice	Qty.	Description
2124 29839 22Apr20	1	KITCHEN: ROUGH-IN - WATERLINE FOR FRIDGE
2124 29840 22Apr20	1	ROUGH-IN - 3PC BASEMENT ROUGH-IN
2124 29850 22Apr20	1	REAR YARD: HOSE BIB - STANDARD TO UPGRADED WITH HOT AND COLD WATER VALVE
2124 29854 22Apr20 NoCat	1	GROUND FLOOR BATHROOM: ROUGH-IN FOR STACKING WASHER/DRYER BESIDE VANITY. SEE PLAN FOR LOCATION  PLUMBING/ELECTRICAL/VENTILATION
2124 32485 22Apr20	1	ENSUITE 4: UPGRADED SHOWER IN LIEU OF TUB - INCLUDES TILE BASE, POTLIGHT IN SHOWER AND FRAMED GLASS ENCLOSURE
2124 32637 22Apr20 NoCat	1	MAIN FLOOR: CREATE LARGER SIDE ENTRANCE FOYER BY MOVING BATHROOM APPROX. 48" TO REAR. SEE PLAN FOR LOCATION.

WINDOWS - BASEMENT

Invoice	Qty.	Description
2124 29849 22Apr20	2	BASEMENT WINDOWS *REAR ONLY* - UPGRADE EXISTING BASEMENT WINDOW TO 30 INCH X 24 INCH - MAY REQUIRE INSTALLATION OF WINDOW WELL



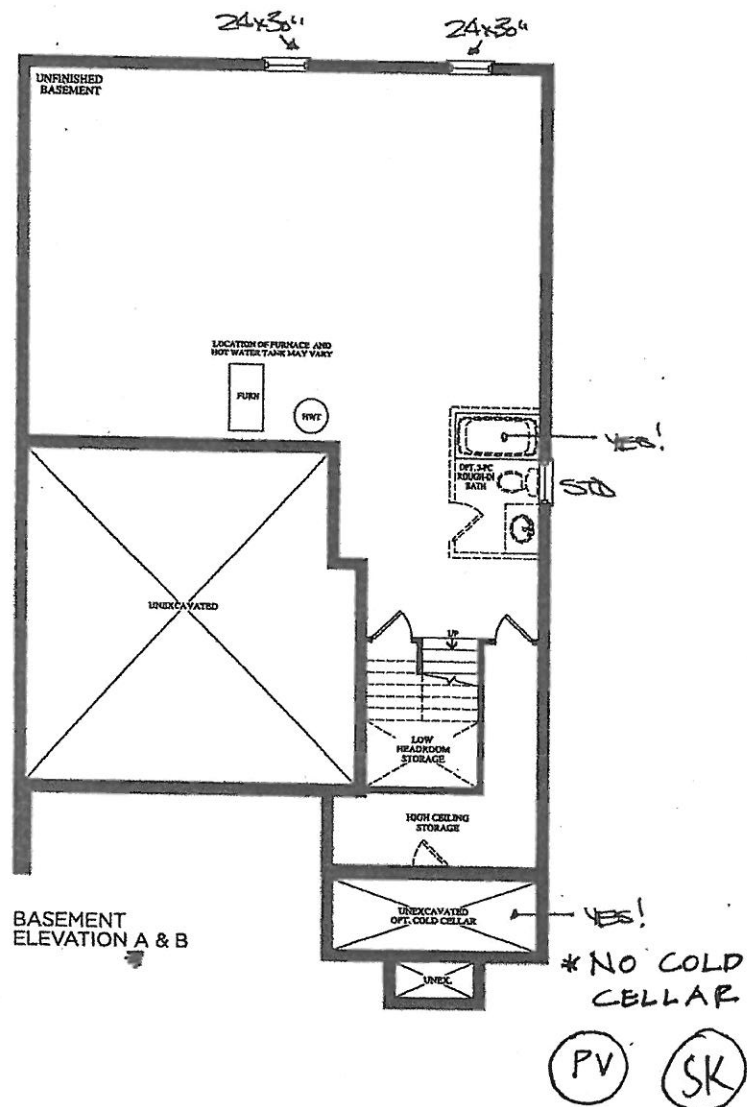
**encore**  
BRAMPTON

**The  
Corelli  
38' SERIES**

~~BE2-111~~  
APRIL 17 2020

(PV) (SK)

Elevation A • 3,878 sq.ft. | Elevation B • 3,878 sq.ft.



Prices, figures, illustrations, sizes, features and finishes are subject to change without notice. E.&O.E. Areas and dimensions are approximate and actual usable floor space may vary from the stated area. Layout may be reverse of the unit purchased. E. & O.E.

**GOLDPARK**  
HOMES

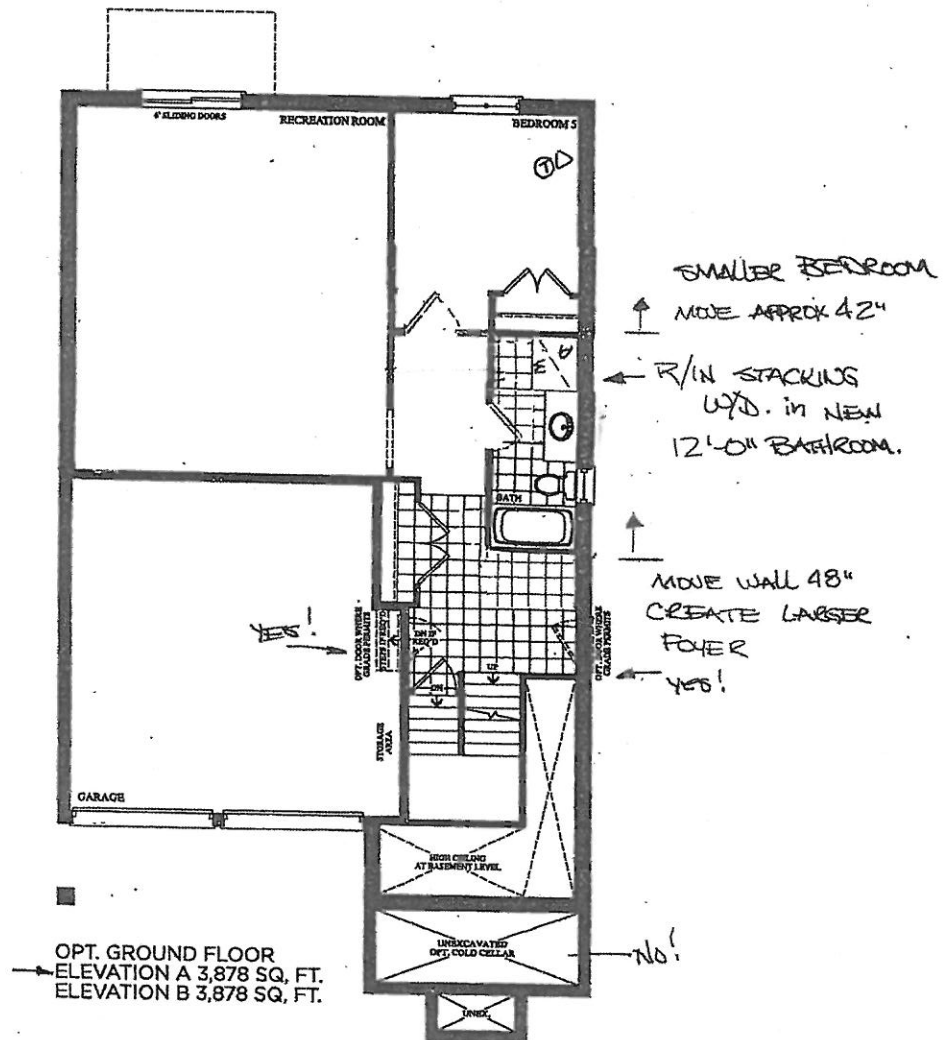
encore  
BRAMPTON

(PV) (SK)

FEZ-111  
April 17 2020

# The Corelli 38' SERIES

Elevation A • 3,878 sq.ft. | Elevation B • 3,878 sq.ft.



Prices, figures, illustrations, sizes, features and finishes are subject to change without notice. E&O.E. Areas and dimensions are approximate and actual usable floor space may vary from the stated area. Layout may be reverse of the unit purchased. E. & O.E.

**GOLDPARK**  
HOMES



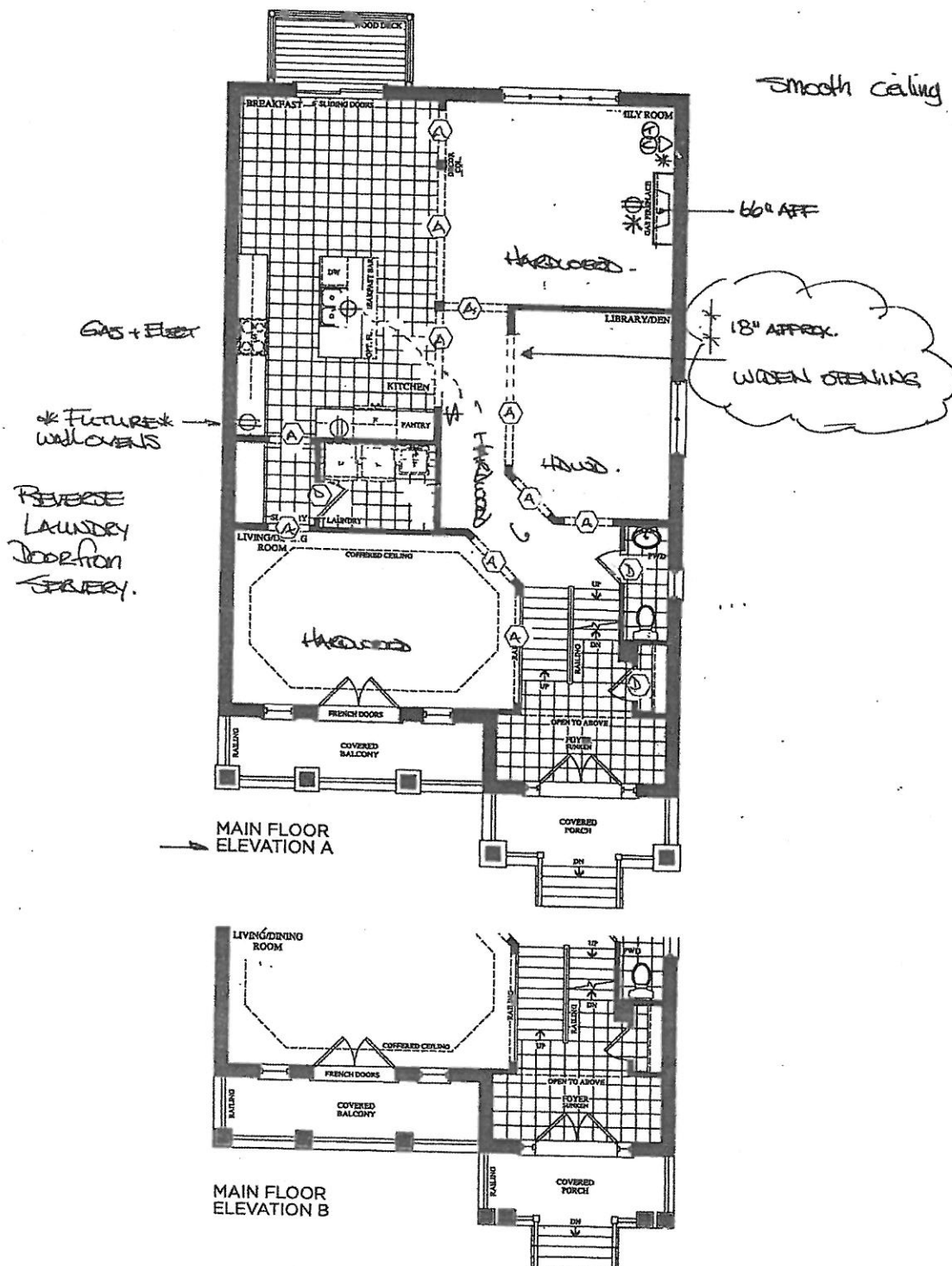
encore  
BRAMPTON

FE2-111  
April 17 2020

PV 41

The  
Corelli  
38' SERIES

Elevation A • 3,878 sq.ft. | Elevation B • 3,878 sq.ft.



Prices, figures, illustrations, sizes, features and finishes are subject to change without notice. E.&O.E. Areas and dimensions are approximate and actual usable floor space may vary from the stated area. Layout may be reverse of the unit purchased. E. & O.E.

GOLDPARK  
HOMES

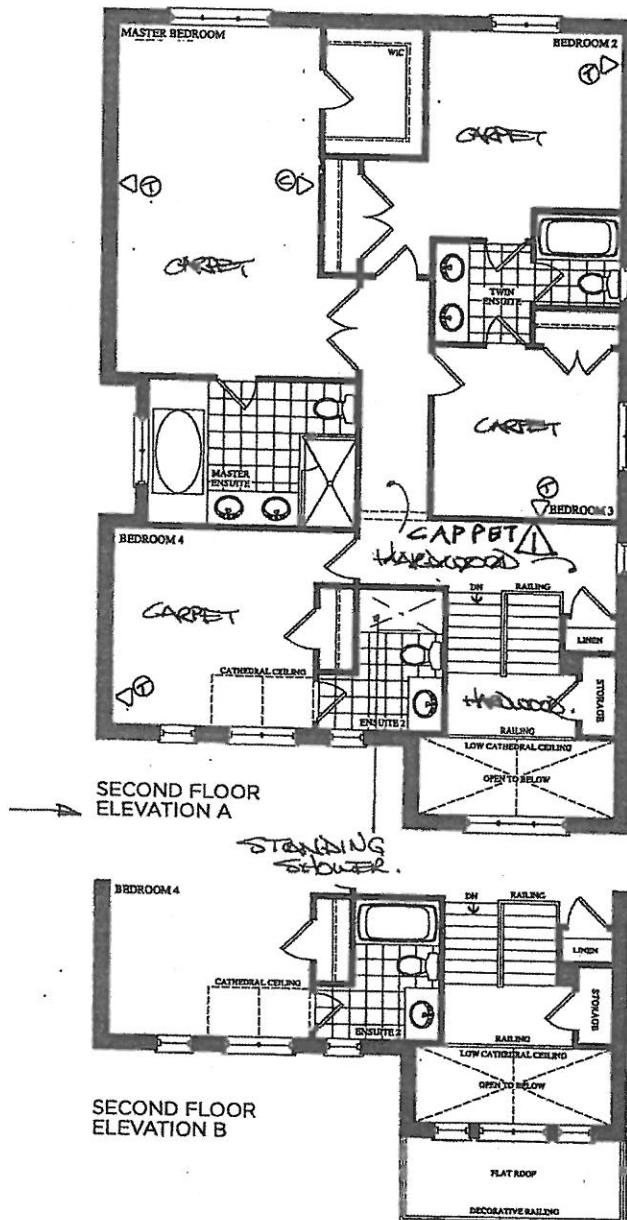
encore  
BRAMPTON

~~B2-111~~  
APRIL 17 2020

PV SK

The  
Corelli  
38' SERIES

Elevation A • 3,878 sq.ft. | Elevation B • 3,878 sq.ft.



⚠ WE WILL DECIDE  
IF WE NEED HARDWOOD  
IN HALLWAY  
WHEN WE HAVE  
DECOR APPOINTMENT

PV SK

Prices, figures, illustrations, sizes, features and finishes are subject to change without notice. E.&O.E. Areas and dimensions are approximate and actual usable floor space may vary from the stated area. Layout may be reverse of the unit purchased. E. & O.E.

GOLDPARK  
HOMES