

CONCRETE AND DRAIN

Invoice Qty. Description

2259 31984	1	BACK-FLOW PREVENTER VALVE
31Mar20 NoCat		CONCRETE AND DRAIN

WINDOWS - BASEMENT

Invoice Qty. Description

2259 31953	3	BASEMENT WINDOWS - UPGRADE BASEMENT WINDOW SIZE TO 30 " X 24" - 10" FRAME (PINEVALLEY 50 FOOT LOTS ONLY)
31Mar20		WINDOWS - BASEMENT 72,675 WINDOWS - BASEMENT
2259 31982	1	BASEMENT WINDOWS - EGRESS BASEMENT WINDOW 47 " X 35" - 10" FRAME (PINEVALLEY 50 FOOT LOTS ONLY)
31Mar20		WINDOWS - BASEMENT 72,678 WINDOWS - BASEMENT

This Document is Extremely Time Sensitive - Printed 31 Mar 20 at 10:50

SCHEDULE 'F'

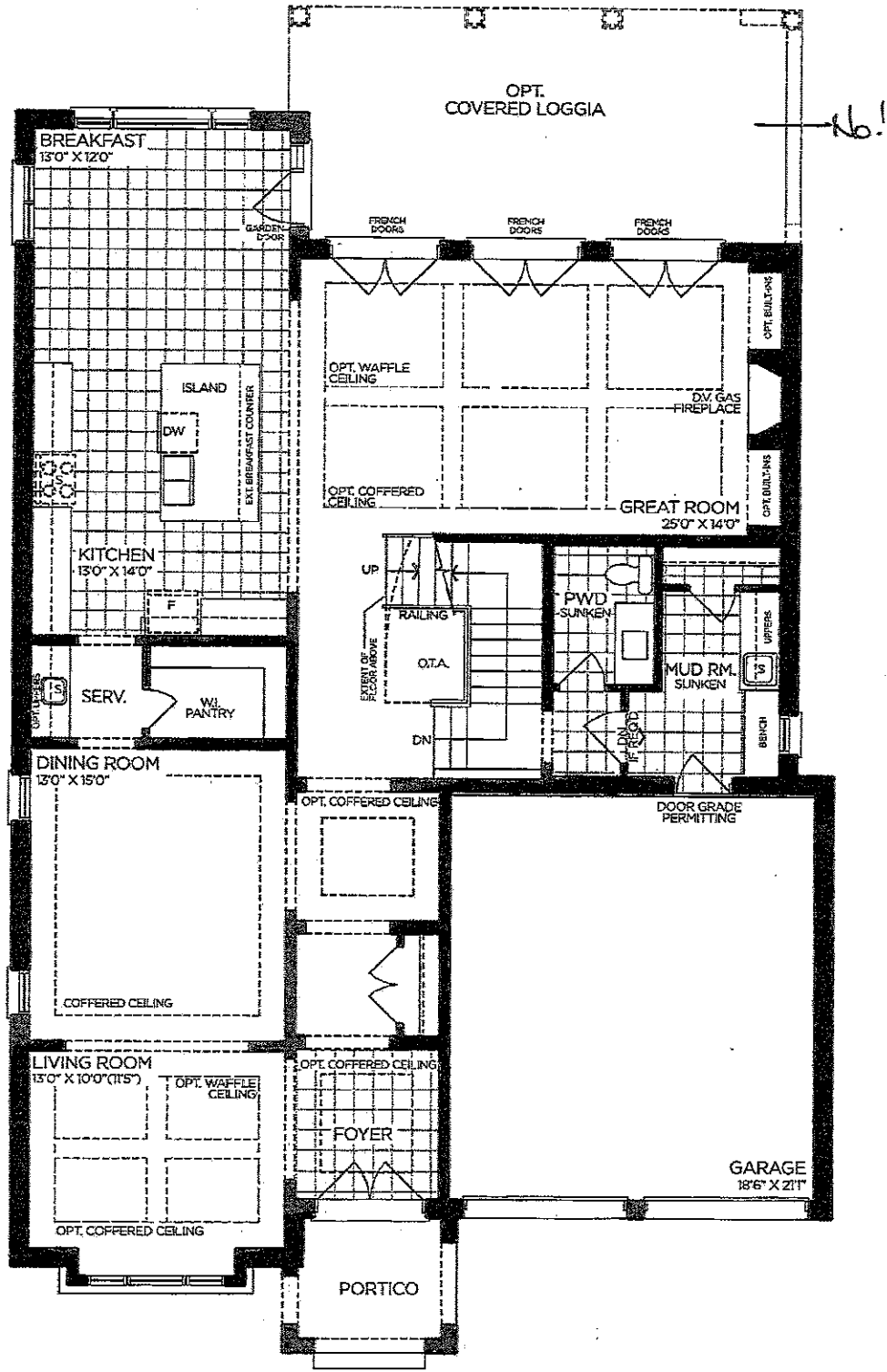


PV-125
March 30 2020

The Oakgrove

50' SERIES

Elevation A • 3,920 sq.ft.
Elevation B • 3,905 sq.ft.
Elevation C • 3,915 sq.ft.



GROUND FLOOR | ELEV. A

VENDOR

PURCHASER

PURCHASER

GOLDPARK
WORTH MORE™

Prices, figures, illustrations, sizes, features and finishes are subject to change without notice. Areas and dimensions are approximate and actual usable floor space may vary from the stated area. Layout may be reverse of the unit purchased. E. & O.E. 5003

SCHEDULE 'F'

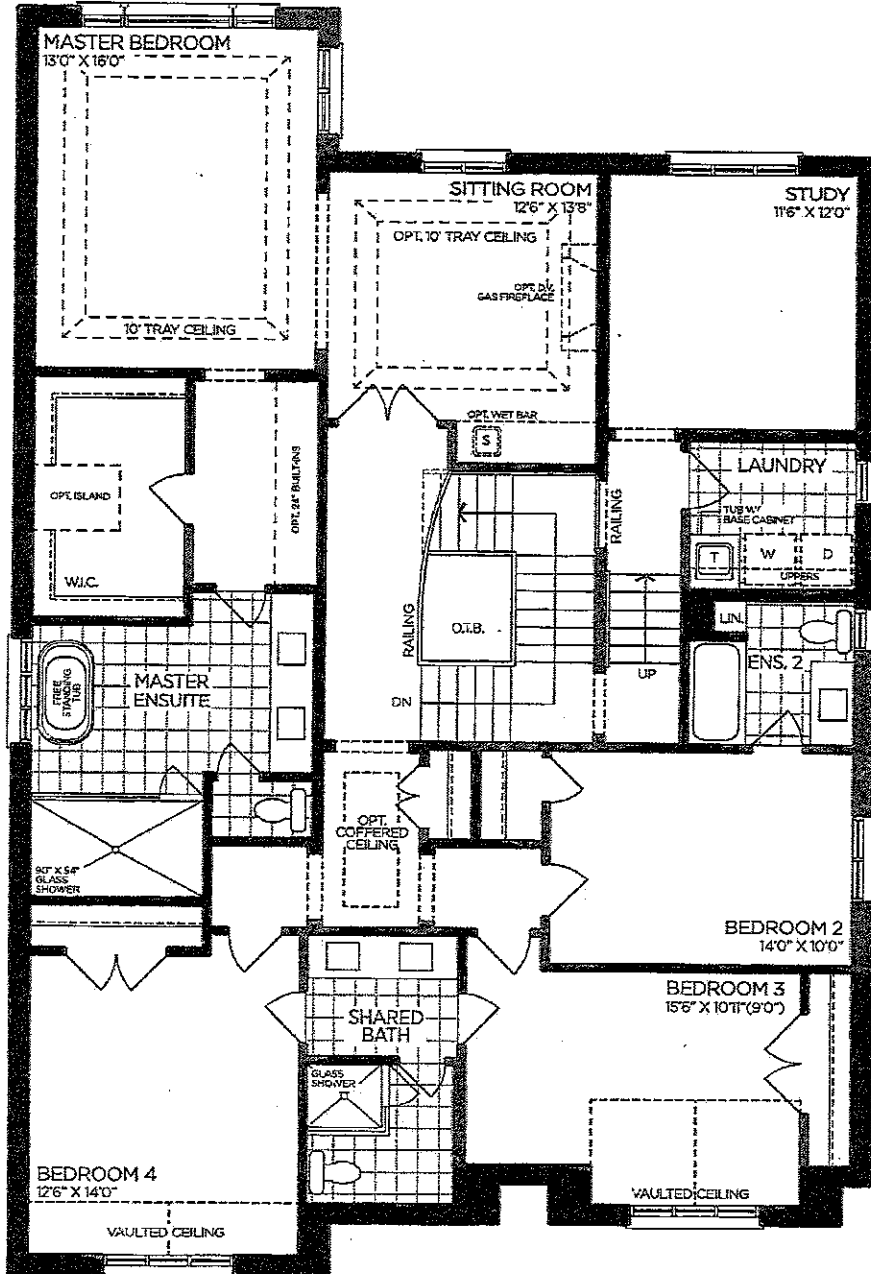


FN-125
 Mar 20 2020

The Oakgrove

50' SERIES

→ Elevation A • 3,920 sq.ft.
 Elevation B • 3,905 sq.ft.
 Elevation C • 3,915 sq.ft.



SECOND FLOOR | ELEV. A

VENDOR

PURCHASER

PURCHASER

GOLDPARK
 WORTH MORE™

Prices, figures, illustrations, sizes, features and finishes are subject to change without notice. Areas and dimensions are approximate and actual usable floor space may vary from the stated area. Layout may be reverse of the unit purchased. E. & O.E. 5003

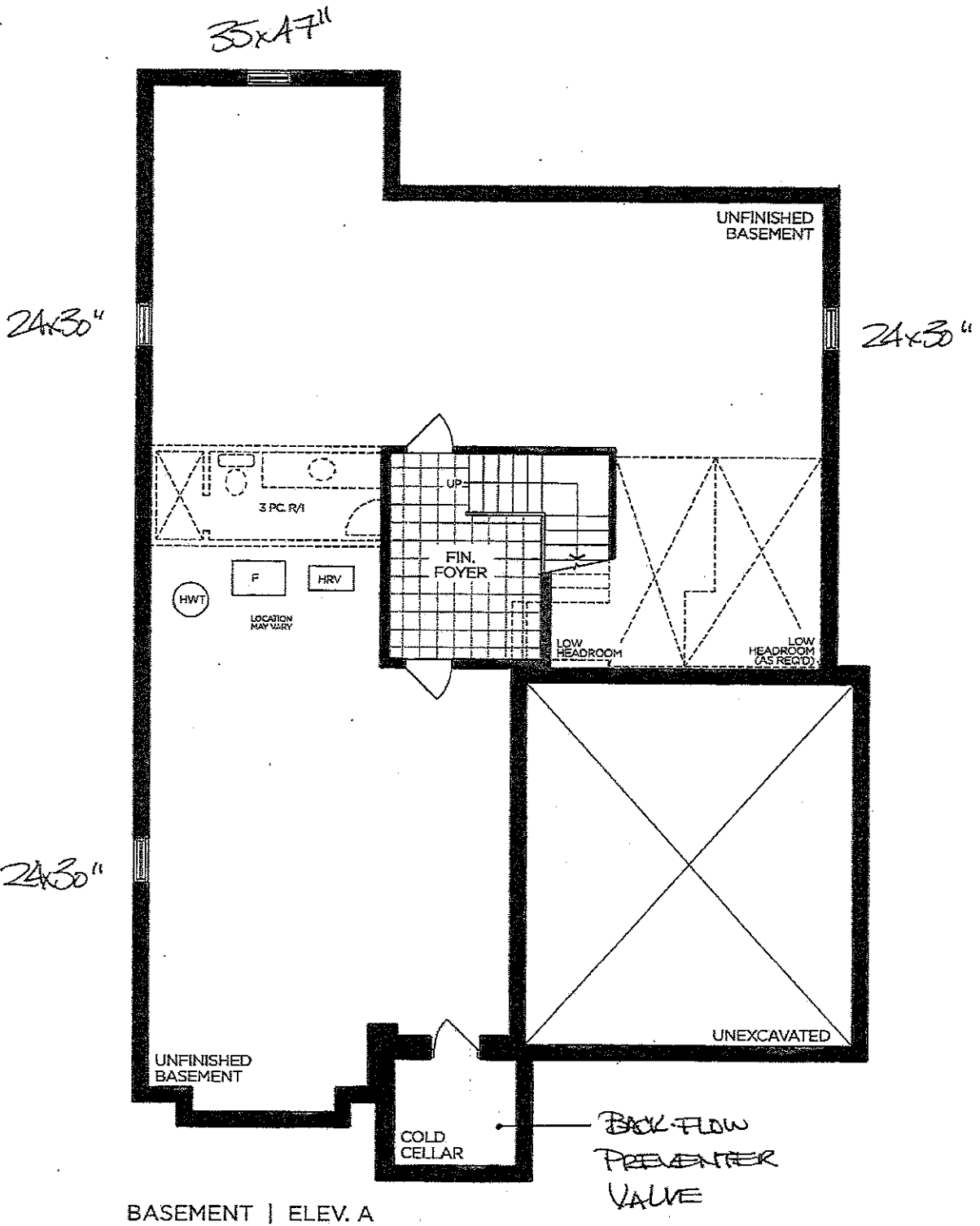
SCHEDULE 'F'



PV-125
March 30 2020

The
Oakgrove
50' SERIES

Elevation A • 3,920 sq.ft.
Elevation B • 3,905 sq.ft.
Elevation C • 3,915 sq.ft.



VENDOR

PURCHASER

PURCHASER

GOLDPARK
WORTH MORE™

Prices, figures, illustrations, sizes, features and finishes are subject to change without notice. Areas and dimensions are approximate and actual usable floor space may vary from the stated area. Layout may be reverse of the unit purchased. E. & O.E. 5003