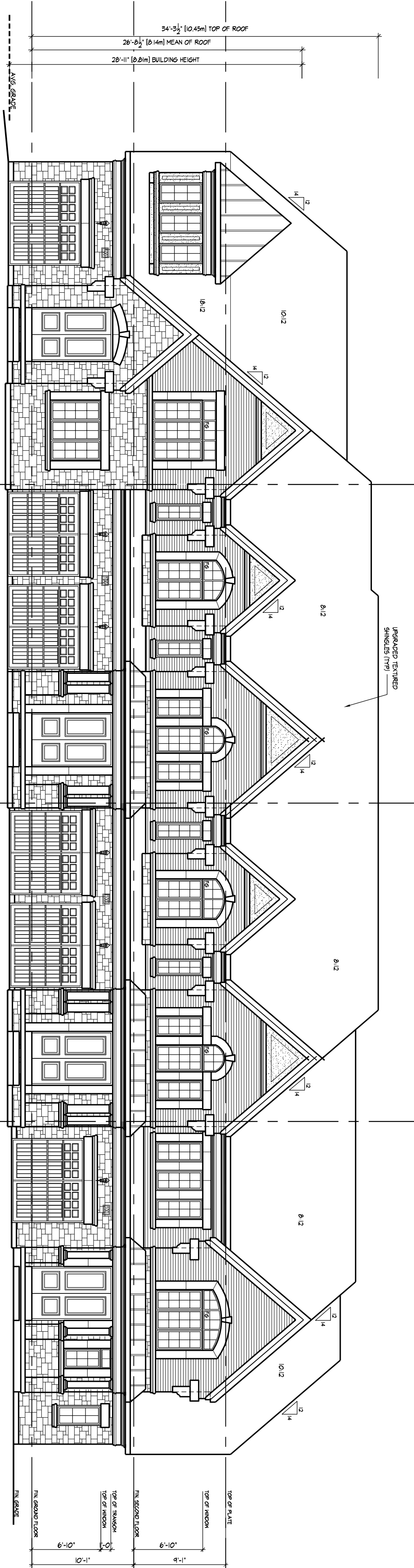


1 UNIT 3105-END
ELEV. 'X' (REV.)

BLOCK 7 - LEFT SIDE ELEVATION



1 UNIT 3105-END
ELEV. 'X' (REV.)

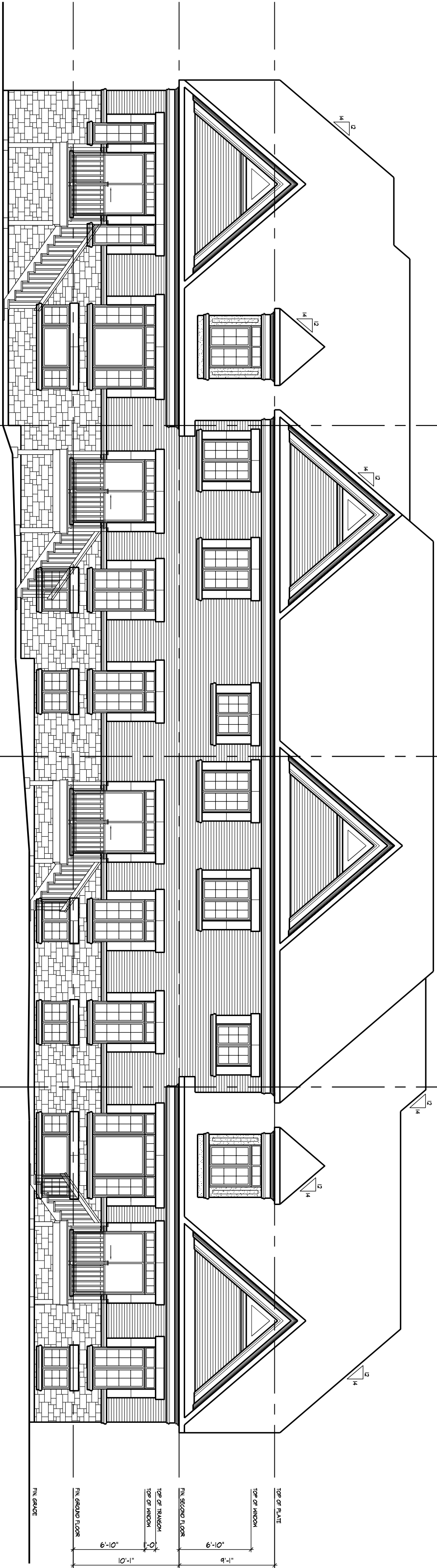
2 UNIT 3103
ELEV. 'X' (REV.)

3 UNIT 3103
ELEV. 'X' (REV.)

4 UNIT 3104-END
ELEV. 'X' (REV.)

BLOCK 7 - FRONT ELEVATION

NOTE:
ALL WINDOW STOPS TO BE FINISHED IN
FLUOROPOLYMER FINISHES
USE LAMINATE WINDOW STOPS WHEN
APPLICABLE



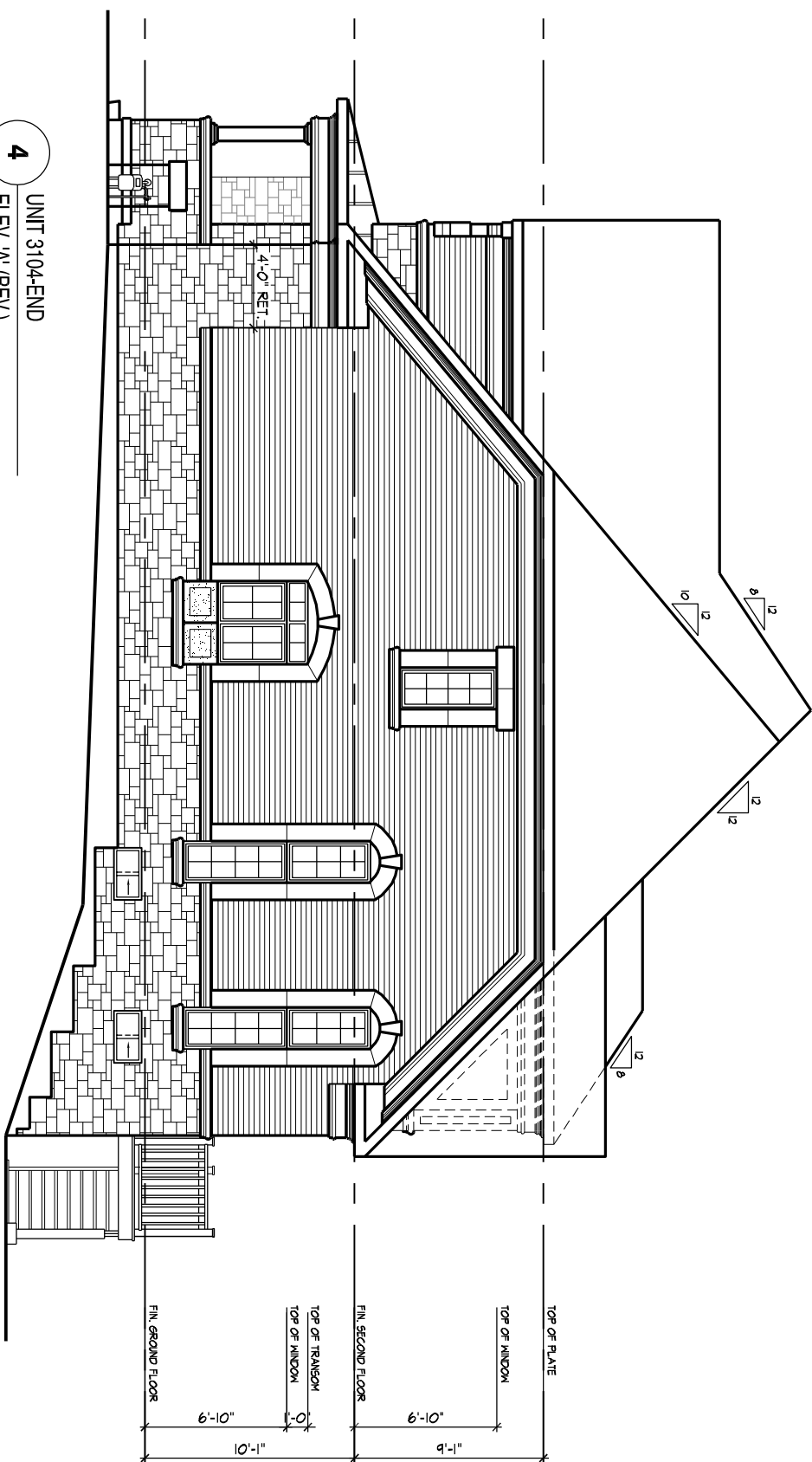
4 UNIT 3104-END
ELEV. 'X' (REV.)

3 UNIT 3103
ELEV. 'X' (REV.)

2 UNIT 3103
ELEV. 'X' (REV.)

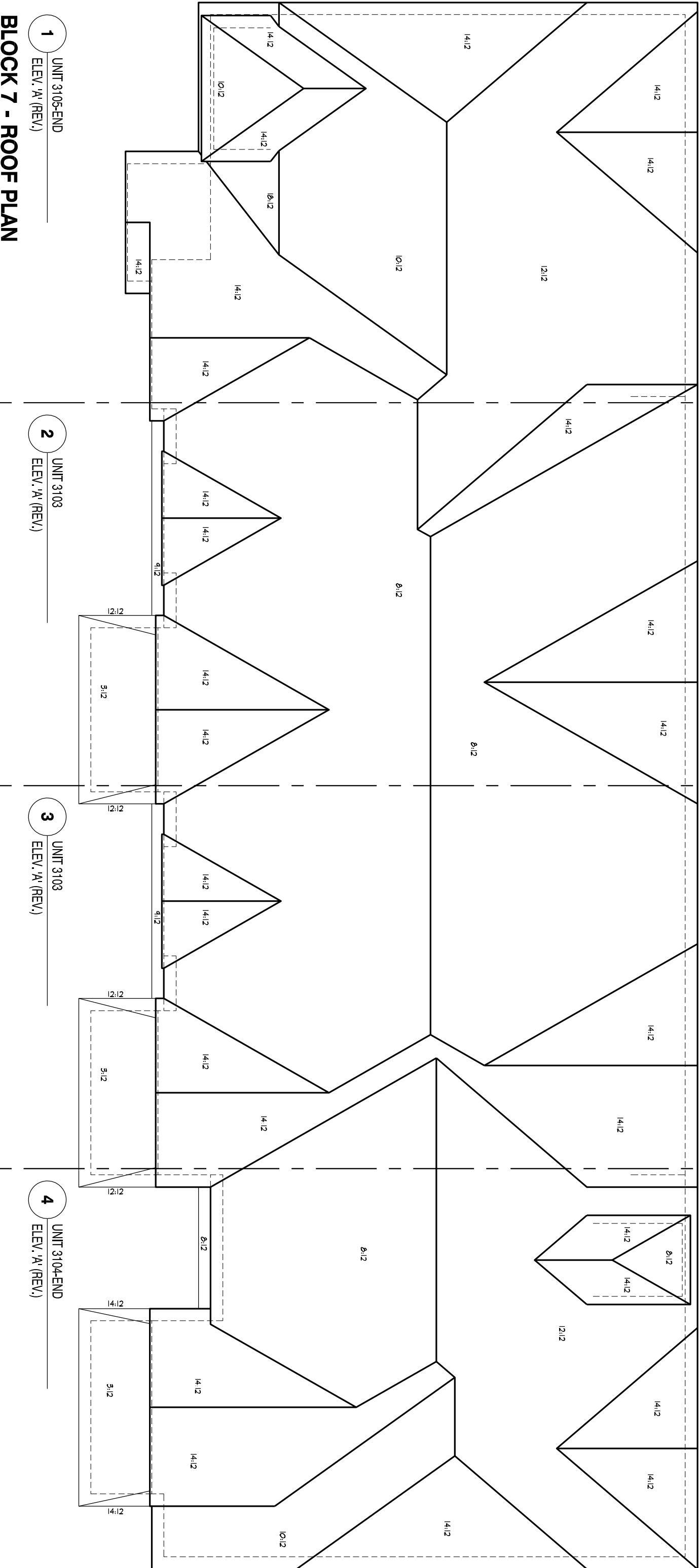
1 UNIT 3105-END
ELEV. 'X' (REV.)

BLOCK 7 - REAR ELEVATION



4 UNIT 3104-END
ELEV. 'X' (REV.)

BLOCK 7 - RIGHT SIDE ELEVATION



1 UNIT 3105-END
ELEV. 'X' (REV.)

2 UNIT 3103
ELEV. 'X' (REV.)

3 UNIT 3103
ELEV. 'X' (REV.)

4 UNIT 3104-END
ELEV. 'X' (REV.)

BLOCK 7 - ROOF PLAN

This is to certify that the above drawings were prepared by the undersigned and that the undersigned is a duly qualified and licensed architect in the City of Vaughan, Ontario.

1	5	-	-	-
2	4	-	-	-
3	3	-	-	-
4	2	-	-	-
5	1	-	-	-
6	0	-	-	-
7	0	-	-	-
8	0	-	-	-
9	0	-	-	-
10	0	-	-	-
11	0	-	-	-
12	0	-	-	-
13	0	-	-	-
14	0	-	-	-
15	0	-	-	-
16	0	-	-	-
17	0	-	-	-
18	0	-	-	-
19	0	-	-	-
20	0	-	-	-
21	0	-	-	-
22	0	-	-	-
23	0	-	-	-
24	0	-	-	-
25	0	-	-	-
26	0	-	-	-
27	0	-	-	-
28	0	-	-	-
29	0	-	-	-
30	0	-	-	-
31	0	-	-	-
32	0	-	-	-
33	0	-	-	-
34	0	-	-	-
35	0	-	-	-
36	0	-	-	-
37	0	-	-	-
38	0	-	-	-
39	0	-	-	-
40	0	-	-	-
41	0	-	-	-
42	0	-	-	-
43	0	-	-	-
44	0	-	-	-
45	0	-	-	-
46	0	-	-	-
47	0	-	-	-
48	0	-	-	-
49	0	-	-	-
50	0	-	-	-
51	0	-	-	-
52	0	-	-	-
53	0	-	-	-
54	0	-	-	-
55	0	-	-	-
56	0	-	-	-
57	0	-	-	-
58	0	-	-	-
59	0	-	-	-
60	0	-	-	-
61	0	-	-	-
62	0	-	-	-
63	0	-	-	-
64	0	-	-	-
65	0	-	-	-
66	0	-	-	-
67	0	-	-	-
68	0	-	-	-
69	0	-	-	-
70	0	-	-	-
71	0	-	-	-
72	0	-	-	-
73	0	-	-	-
74	0	-	-	-
75	0	-	-	-
76	0	-	-	-
77	0	-	-	-
78	0	-	-	-
79	0	-	-	-
80	0	-	-	-
81	0	-	-	-
82	0	-	-	-
83	0	-	-	-
84	0	-	-	-
85	0	-	-	-
86	0	-	-	-
87	0	-	-	-
88	0	-	-	-
89	0	-	-	-
90	0	-	-	-
91	0	-	-	-
92	0	-	-	-
93	0	-	-	-
94	0	-	-	-
95	0	-	-	-
96	0	-	-	-
97	0	-	-	-
98	0	-	-	-
99	0	-	-	-
100	0	-	-	-

HUNT LTD.

DESIGN ASSOCIATES INC.

WWW.HUNTDESIGN.COM 1.208.0.17

GOLDPARK HOMES - 217014

PINE VALLEY DRIVE, VAUGHAN, ONTARIO

BLOCK 7

LOTS 1 to 4

BLOCK ELEVATIONS & ROOF PLAN

REV. 2018.03.16

O. HARRIS

7 of 18