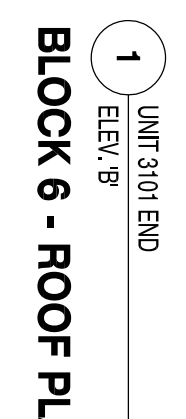


4 UNIT 3102 END
ELEV. 'B'

Architectural elevation drawing of the front facade of a building. The drawing is symmetrical about a central vertical axis. The central entrance features a large, arched window above the door. The facade is divided into sections by vertical lines, with dimensions indicating the width of each section. The drawing includes various window styles, including multi-paned windows and arched windows. The roofline is shown with a gabled section in the center. The drawing is labeled with dimensions and notes, including "TOP OF 4th FLOOR", "TOP OF 3rd FLOOR", "TOP OF 2nd FLOOR", "TOP OF 1st FLOOR", "TOP OF 0th FLOOR", "TOP OF -1st FLOOR", "TOP OF -2nd FLOOR", "TOP OF -3rd FLOOR", "TOP OF -4th FLOOR", "TOP OF -5th FLOOR", "TOP OF -6th FLOOR", "TOP OF -7th FLOOR", "TOP OF -8th FLOOR", "TOP OF -9th FLOOR", "TOP OF -10th FLOOR", "TOP OF -11th FLOOR", "TOP OF -12th FLOOR", "TOP OF -13th FLOOR", "TOP OF -14th FLOOR", "TOP OF -15th FLOOR", "TOP OF -16th FLOOR", "TOP OF -17th FLOOR", "TOP OF -18th FLOOR", "TOP OF -19th FLOOR", "TOP OF -20th FLOOR", "TOP OF -21st FLOOR", "TOP OF -22nd FLOOR", "TOP OF -23rd FLOOR", "TOP OF -24th FLOOR", "TOP OF -25th FLOOR", "TOP OF -26th FLOOR", "TOP OF -27th FLOOR", "TOP OF -28th FLOOR", "TOP OF -29th FLOOR", "TOP OF -30th FLOOR", "TOP OF -31st FLOOR", "TOP OF -32nd FLOOR", "TOP OF -33rd FLOOR", "TOP OF -34th FLOOR", "TOP OF -35th FLOOR", "TOP OF -36th FLOOR", "TOP OF -37th FLOOR", "TOP OF -38th FLOOR", "TOP OF -39th FLOOR", "TOP OF -40th FLOOR", "TOP OF -41st FLOOR", "TOP OF -42nd FLOOR", "TOP OF -43rd FLOOR", "TOP OF -44th FLOOR", "TOP OF -45th FLOOR", "TOP OF -46th FLOOR", "TOP OF -47th FLOOR", "TOP OF -48th FLOOR", "TOP OF -49th FLOOR", "TOP OF -50th FLOOR", "TOP OF -51st FLOOR", "TOP OF -52nd FLOOR", "TOP OF -53rd FLOOR", "TOP OF -54th FLOOR", "TOP OF -55th FLOOR", "TOP OF -56th FLOOR", "TOP OF -57th FLOOR", "TOP OF -58th FLOOR", "TOP OF -59th FLOOR", "TOP OF -60th FLOOR", "TOP OF -61st FLOOR", "TOP OF -62nd FLOOR", "TOP OF -63rd FLOOR", "TOP OF -64th FLOOR", "TOP OF -65th FLOOR", "TOP OF -66th FLOOR", "TOP OF -67th FLOOR", "TOP OF -68th FLOOR", "TOP OF -69th FLOOR", "TOP OF -70th FLOOR", "TOP OF -71st FLOOR", "TOP OF -72nd FLOOR", "TOP OF -73rd FLOOR", "TOP OF -74th FLOOR", "TOP OF -75th FLOOR", "TOP OF -76th FLOOR", "TOP OF -77th FLOOR", "TOP OF -78th FLOOR", "TOP OF -79th FLOOR", "TOP OF -80th FLOOR", "TOP OF -81st FLOOR", "TOP OF -82nd FLOOR", "TOP OF -83rd FLOOR", "TOP OF -84th FLOOR", "TOP OF -85th FLOOR", "TOP OF -86th FLOOR", "TOP OF -87th FLOOR", "TOP OF -88th FLOOR", "TOP OF -89th FLOOR", "TOP OF -90th FLOOR", "TOP OF -91st FLOOR", "TOP OF -92nd FLOOR", "TOP OF -93rd FLOOR", "TOP OF -94th FLOOR", "TOP OF -95th FLOOR", "TOP OF -96th FLOOR", "TOP OF -97th FLOOR", "TOP OF -98th FLOOR", "TOP OF -99th FLOOR", "TOP OF -100th FLOOR".

UNIT 3434 PAID

ELEV.'B"



4
UNIT 310
ELEV. 'B'

BLOCK 6 - ROOF PLAIN

NO.	DESCRIPTION	YYYYMMDD	BY
1.	ISSUED FOR SITE PLAN APPROVAL	2016/03/08	OF
2.	REVISED AS PER AC COMMENTS	2016/03/16	OF
3.		-	-
4.		-	-
5.		-	-

THE ARCHITECTURE WAS REVIEWED AND TASKS RESPONSIBILITY FOR THIS DESIGN AND HAS THE QUALIFICATIONS AND MEETS THE REQUIREMENTS SET OUT IN THE CANADA BUILDING CODE TO BE A DESIGNER.

Date Published:	000000
Classification Information:	

NAME	STATUS	DATE
JOHN DOE	ACTIVE	2023-10-27
JANE SMITH	INACTIVE	2023-10-27
BOB JONES	PENDING	2023-10-27

HUNT DESIGN ASSOCIATES INC. 19935

3

HUNTING

DESIGN ASSOCIATES INC.
www.hunttdesign.ca

8966 Woodbine Ave, Markham, ON L3R 0J7
T 905.737.5133 F 905.737.7326 email: hdai@huntdesign.ca

GOLDPARK HOMES - 217014

PINE VALLEY DRIVE, VAUGHAN, ONTARIO

BLOCK 6

LOTS 1 to 4

BLOCK ELEVATIONS & ROOF PLAN

REV. 2018/03/16

Scale	Drawn By	Checked By
5		
4		
3		
2		
1		
0		

Page Number	Page Number
118	118

217014DT-BLOCKS 1 to 6 6 of 18