

Products				
PlotID	Length	Product	Plies	Net Qty
B3	13-00-00	VERSALAM-10 2.0E	2	2
B2	11-00-00	VERSALAM-10 2.0E	2	4
B1	9-00-00	VERSALAM-10 2.0E	1	1

**JOIST SCHEDULE**

J1 - 9 1/2" NI-20 @ 12" O/C  
 J2 - 9 1/2" NI-20 @ 16" O/C  
 J5 - 9 1/2" NI-40X @ 12" O/C  
 J6 - 9 1/2" NI-40X @ 16" O/C

BLK - W/MID-SPAN BLOCKING  
 SUBFLOOR - 5/8" NAILED & GLUED

**HANGER SCHEDULE**

H1-----LT259 (TM)  
 H2-----HUS1.81/10 (FM)  
 H4-----MIT39.5-2 (TM)

**NOTE:**  
 TM-----TOP MOUNT HANGERS  
 FM-----FACE MOUNT HANGERS

**RIMBOARD**

1- 1/8" X 9 1/2" O.S.B.

APP - AS PER PLAN  
 BBO - BEAM BY OTHERS

JOIST SPACING UNDER CERAMIC TILE IS 12" O.C.

### Second Floor Framing

**MODEL: 38 - 7 - ELEV.A**

Do not scale - refer to architectural plans for dimensions

FIRM BCIN 28103  
 DESIGNER BCIN 23991

104133/Sept. 23, 2019  
 82529  
 JT: 39002/76066  
 File: (244317)  
 308622

Builder: Gold Park  
 Project: Mclaughlin and Mayfield

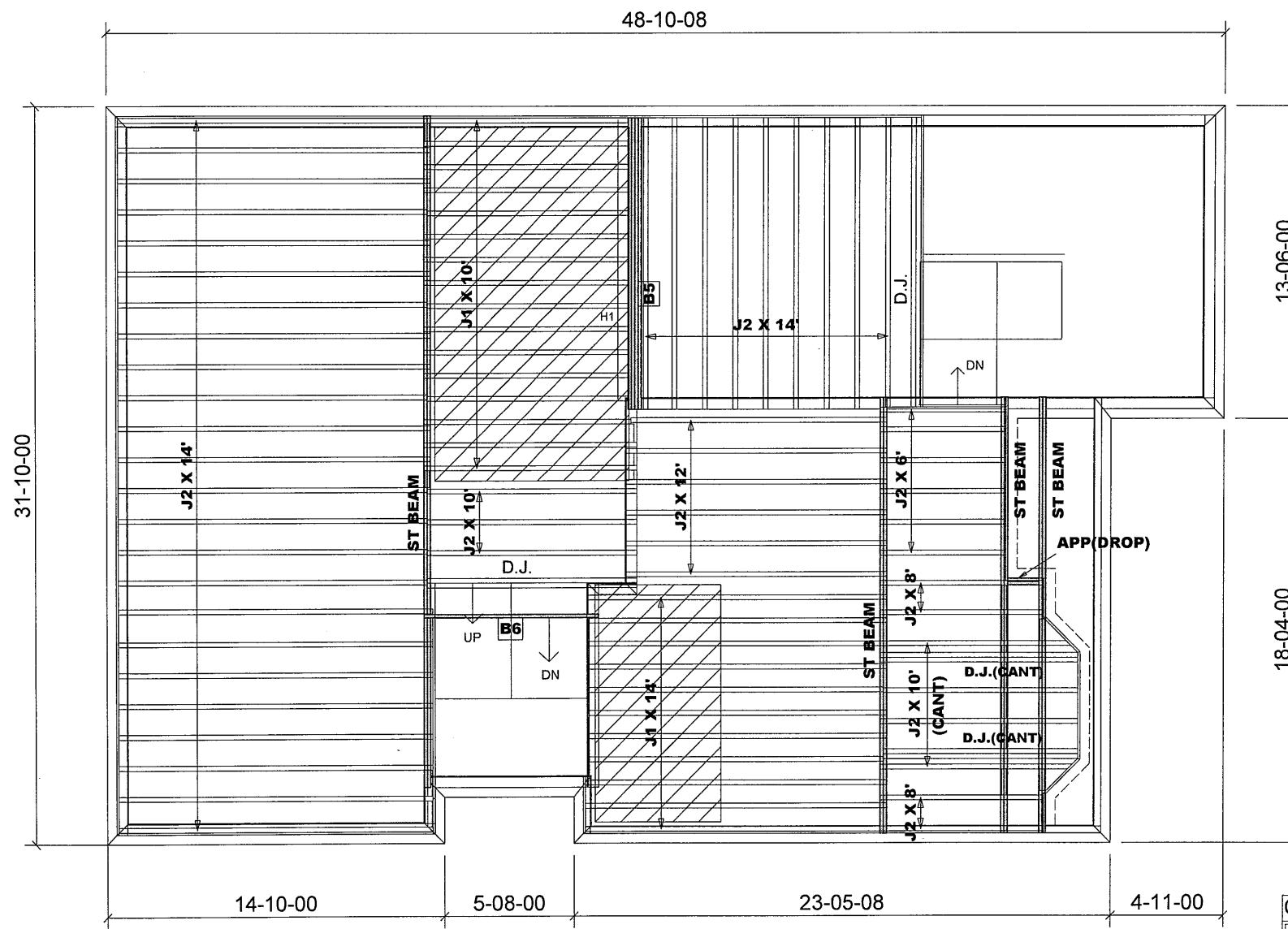
Location: Brampton  
 Date: August 4, 2014

Designer: NL  
 Sheet: 1 of 12

Alpa Roof Trusses Inc.  
 Maple, Ontario

Salesperson: Derek  
 Home Lumber

S-119859, S-119866, S-165423 - S-165427



Products				
PlotID	Length	Product	Plies	Net Qty
B5	13-00-00	VERSALAM-10 2.0E	4	4
B6	8-00-00	VERSALAM-10 2.0E	1	1

**JOIST SCHEDULE**

J1 - 9 1/2" NI-20 @ 12" O/C  
 J2 - 9 1/2" NI-20 @ 16" O/C

SUBFLOOR - 5/8" NAILED & GLUED

**HANGER SCHEDULE**

H1-----LT259 (TM)

**NOTE:**  
 TM -----TOP MOUNT HANGERS  
 FM-----FACE MOUNT HANGERS

**RIMBOARD**

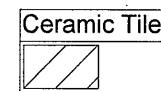
1- 1/8" X 9 1/2" O.S.B.

APP - AS PER PLAN  
 BBO - BEAM BY OTHERS

JOIST SPACING UNDER CERAMIC TILE IS 12" O.C.

Provide I-Joist Blocking between cantilevered joists (along bearing) and rimboard closure at ends.

1- 2X6 SPF#2 Squash Block req'd on one side of each joist under interior load bearing walls. Multiple Squash Blocks are req'd under concentrated loads.



**REVISION: August 31, 2015**

**MODEL: 38 - 7 - ELEV.A**

Do not scale - refer to architectural plans for dimensions

FIRM BCIN 28103  
 DESIGNER BCIN 23991

**Main Floor Framing**

104133/Sept 23, 2019

JT: 39002/82529

File: (244317)

308622

Builder: Gold Park

Project: Mclaughlin and Mayfield

Location: Brampton

Date: August 4, 2014

Designer: NL

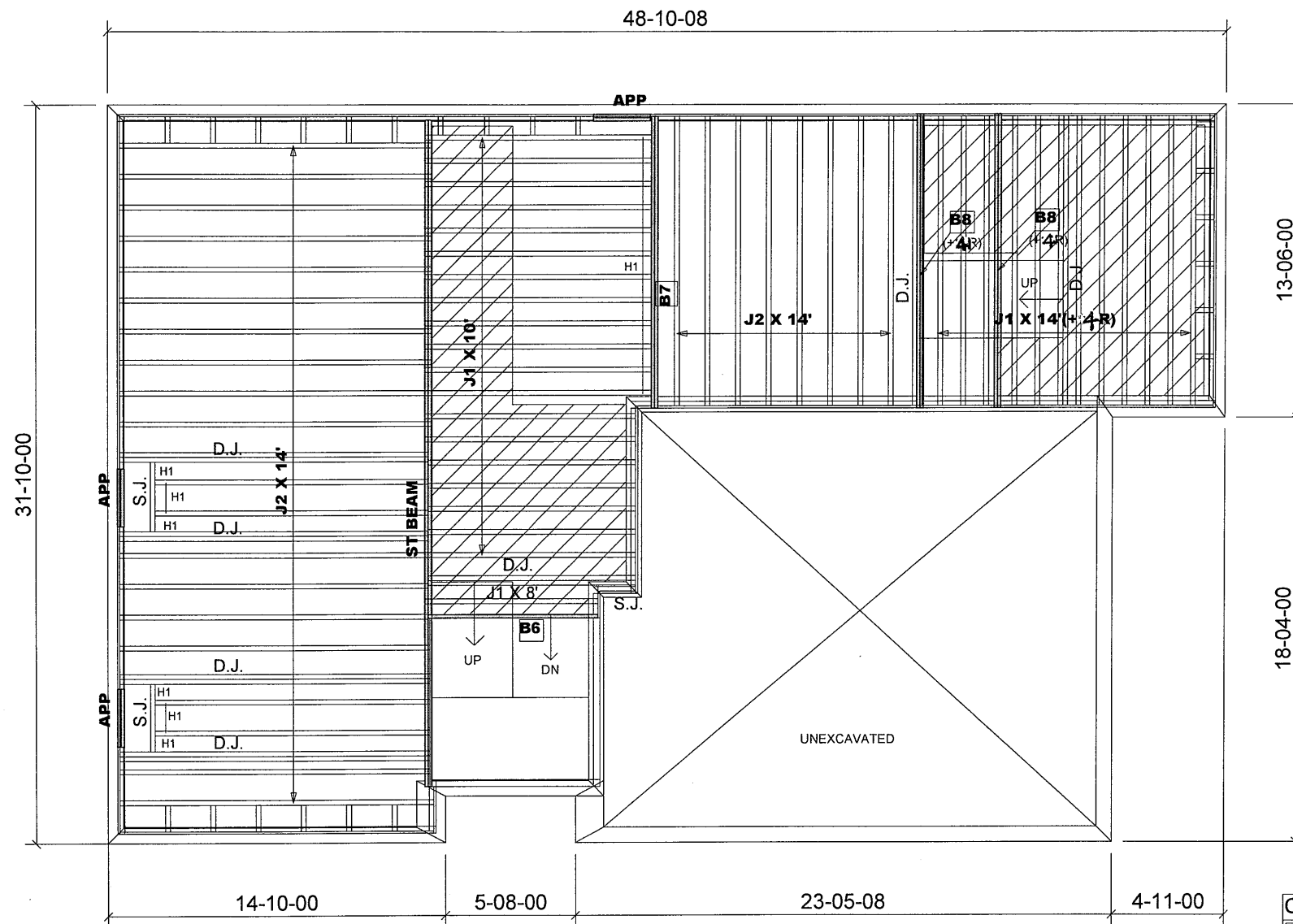
Sheet: 2 of 12

Alpa Roof Trusses Inc.

Maple, Ontario

Salesperson: Derek

Home Lumber



Products				
PlotID	Length	Product	Plies	Net Qty
B7	13-00-00	VERSALAM-10 2.0E	2	2
B8	13-00-00	VERSALAM-10 2.0E	2	4
B6	8-00-00	VERSALAM-10 2.0E	1	1

#### JOIST SCHEDULE

J1 - 9 1/2" NI-20 @ 12" O/C  
J2 - 9 1/2" NI-20 @ 16" O/C

SUBFLOOR - 5/8" NAILED & GLUED

#### HANGER SCHEDULE

H1-----LT259 (TM)

#### NOTE:

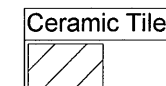
TM -----TOP MOUNT HANGERS  
FM-----FACE MOUNT HANGERS

#### RIMBOARD

1- 1/8" X 9 1/2" O.S.B.

APP - AS PER PLAN  
BBO - BEAM BY OTHERS

JOIST SPACING UNDER CERAMIC TILE IS 12" O.C.



1- 2X6 SPF#2 Squash Block req'd on one side of each joist under interior load bearing walls. Multiple Squash Blocks are req'd under concentrated loads.

### Ground Floor Framing

MODEL: 38 - 7 - ELEV.A + B

Do not scale - refer to architectural plans for dimensions

FIRM BCIN 28103  
DESIGNER BCIN 23991

104133/3046.23, 2019 REV: August 31, 2015

JT: 39002/76066

Builder: Gold Park

Location: Brampton

Designer: NL

Alpa Roof Trusses Inc.

Salesperson: Derek

File: 244317

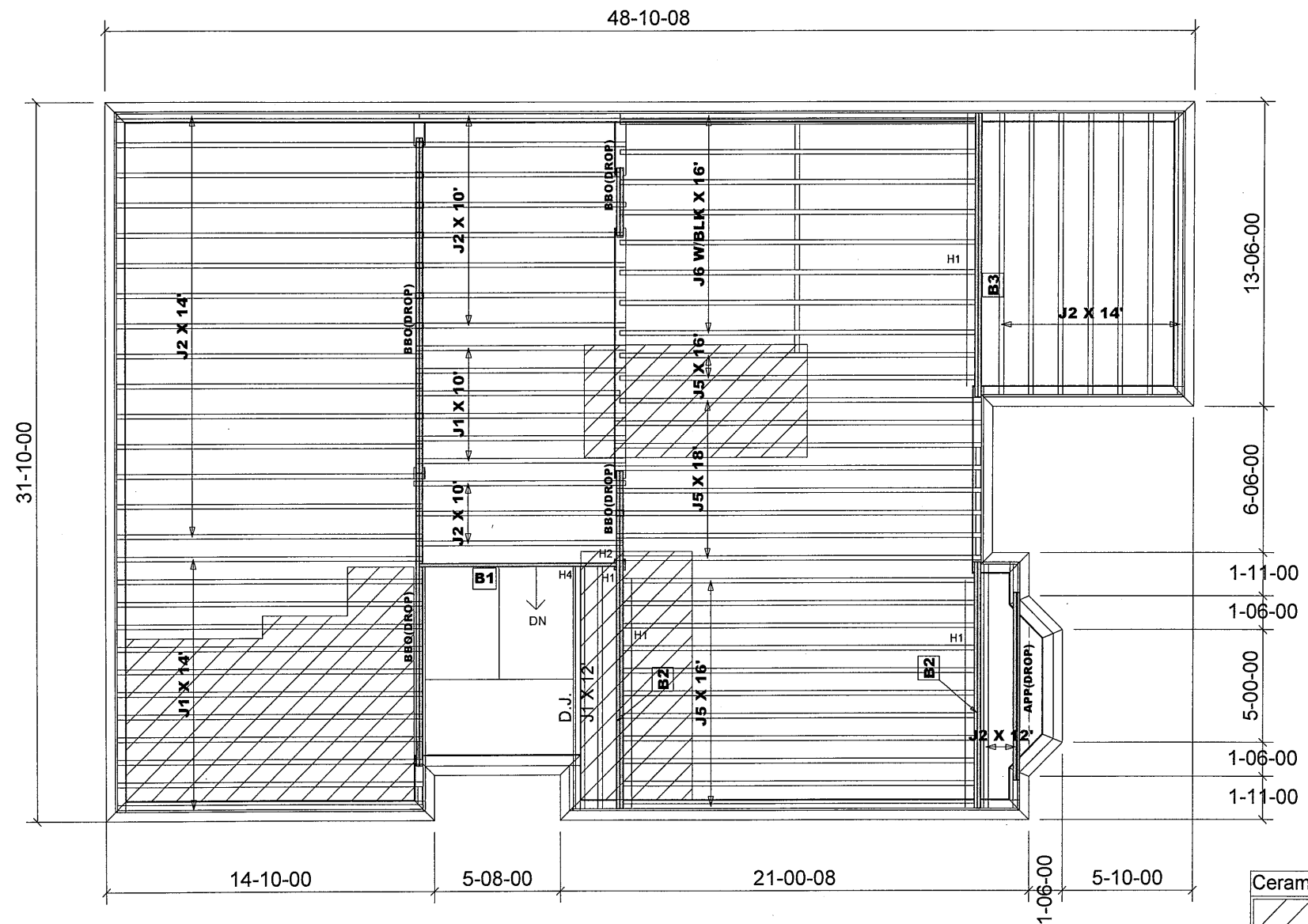
Project: Mclaughlin and Mayfield

Date: August 4, 2014

Sheet: 3 of 12

Maple, Ontario

Home Lumber



Products				
PlotID	Length	Product	Plies	Net Qty
B3	13-00-00	VERSALAM-10 2.0E	2	2
B2	11-00-00	VERSALAM-10 2.0E	2	4
B1	9-00-00	VERSALAM-10 2.0E	1	1

**JOIST SCHEDULE**

J1 - 9 1/2" NI-20 @ 12" O/C  
 J2 - 9 1/2" NI-20 @ 16" O/C  
 J5 - 9 1/2" NI-40X @ 12" O/C  
 J6 - 9 1/2" NI-40X @ 16" O/C

BLK - W/MID-SPAN BLOCKING  
 SUBFLOOR - 5/8" NAILED & GLUED

**HANGER SCHEDULE**

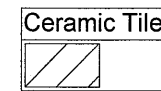
H1-----LT259 (TM)  
 H2-----HUS1.81/10 (FM)  
 H4-----MIT39.5-2 (TM)

**NOTE:**  
 TM -----TOP MOUNT HANGERS  
 FM-----FACE MOUNT HANGERS

**RIMBOARD**

1- 1/8" X 9 1/2" O.S.B.

APP - AS PER PLAN  
 BBO - BEAM BY OTHERS

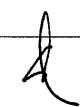


JOIST SPACING UNDER CERAMIC TILE IS 12" O.C.

**MODEL: 38 - 7 - ELEV.A**  
**W/OPT. 2ND FL**

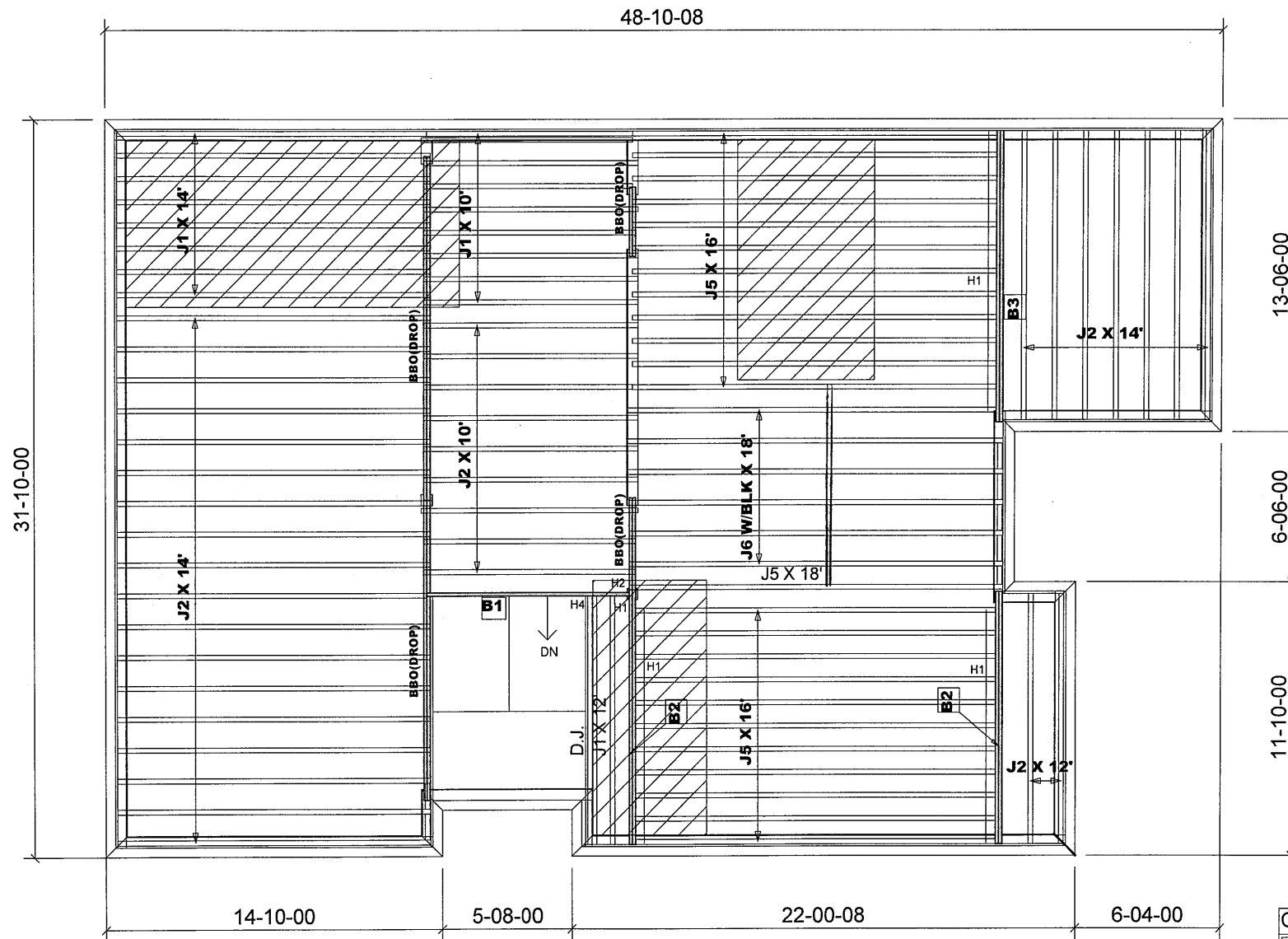
Do not scale - refer to architectural plans for dimensions

FIRM BCIN 28103  
 DESIGNER BCIN 23991



104133

JT: 39002/82529	Builder: Gold Park	Location: Brampton	Designer: NL	Alpa Roof Trusses Inc.	Salesperson: Derek
File: 244317	Project: Mclaughlin and Mayfield	Date: August 31, 2015	Sheet: 4 of 12	Maple, Ontario	Home Lumber



Products				
PlotID	Length	Product	Plies	Net Qty
B3	13-00-00	VERSALAM-10 2.0E	2	2
B2	11-00-00	VERSALAM-10 2.0E	2	4
B1	9-00-00	VERSALAM-10 2.0E	1	1

#### JOIST SCHEDULE

J1 - 9 1/2" NI-20 @ 12" O/C  
 J2 - 9 1/2" NI-20 @ 16" O/C  
 J5 - 9 1/2" NI-40X @ 12" O/C  
 J6 - 9 1/2" NI-40X @ 16" O/C

BLK - W/MID-SPAN BLOCKING

SUBFLOOR - 5/8" NAILED & GLUED

#### HANGER SCHEDULE

H1-----LT259 (TM)  
 H2-----HUS1.81/10 (FM)  
 H4-----MIT39.5-2 (TM)

#### NOTE:

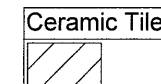
TM -----TOP MOUNT HANGERS  
 FM-----FACE MOUNT HANGERS

#### RIMBOARD

1- 1/8" X 9 1/2" O.S.B.

APP - AS PER PLAN

BBO - BEAM BY OTHERS



JOIST SPACING UNDER CERAMIC TILE IS 12" O.C.

### Second Floor Framing

MODEL: 38 - 7 - ELEV.B

Do not scale - refer to architectural plans for dimensions

FIRM BCIN 28103  
 DESIGNER BCIN 23991

104133

82529  
 JT: 39002/76066

File: 244317

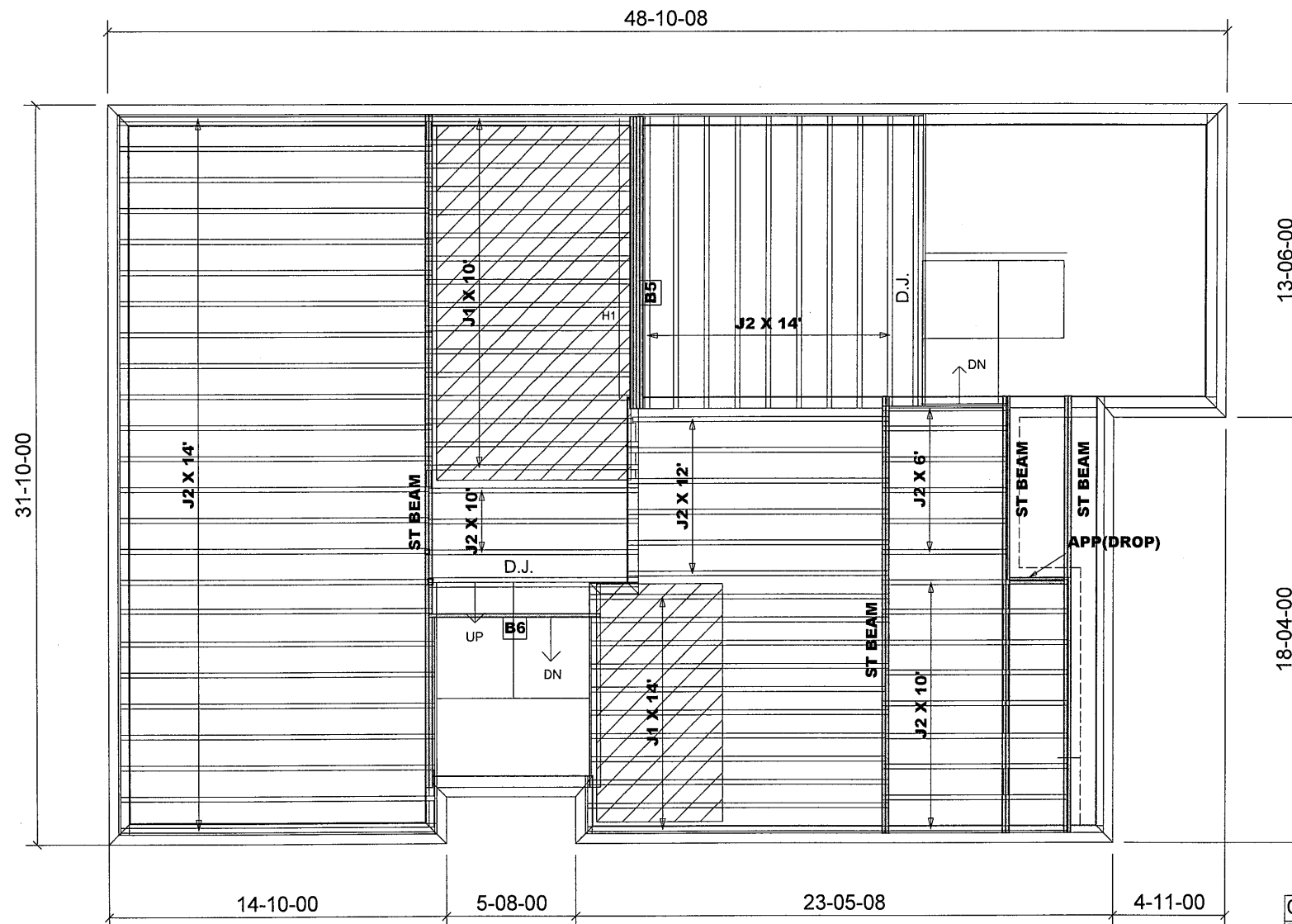
Builder: Gold Park  
 Project: Mclaughlin and Mayfield

Location: Brampton  
 Date: August 4, 2014

Designer: NL  
 Sheet: 5 of 12

Alpa Roof Trusses Inc.  
 Maple, Ontario

Salesperson: Derek  
 Home Lumber



Products				
PlotID	Length	Product	Plies	Net Qty
B5	13-00-00	VERSALAM-10 2.0E	4	4
B6	8-00-00	VERSALAM-10 2.0E	1	1

#### JOIST SCHEDULE

J1 - 9 1/2" NI-20 @ 12" O/C  
J2 - 9 1/2" NI-20 @ 16" O/C

SUBFLOOR - 5/8" NAILED & GLUED

#### HANGER SCHEDULE

H1-----LT259 (TM)

#### NOTE:

TM -----TOP MOUNT HANGERS  
FM-----FACE MOUNT HANGERS

#### RIMBOARD

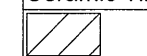
1- 1/8" X 9 1/2" O.S.B.

APP - AS PER PLAN

BBO - BEAM BY OTHERS

JOIST SPACING UNDER CERAMIC TILE IS 12" O.C.

Ceramic Tile



Provide I-Joist Blocking between cantilevered joists (along bearing) and rimboard closure at ends.

1- 2X6 SPF#2 Squash Block req'd on one side of each joist under interior load bearing walls. Multiple Squash Blocks are req'd under concentrated loads.

REVISION: August 31, 2015

MODEL: 38 - 7 - ELEV.B

### Main Floor Framing

Do not scale - refer to architectural plans for dimensions

FIRM BCIN 28103  
DESIGNER BCIN 23991

104137

JT: 39002/82529

Builder: Gold Park

Location: Brampton

Designer: NL

Alpa Roof Trusses Inc.

Salesperson: Derek

File: 244317

Project: Mclaughlin and Mayfield

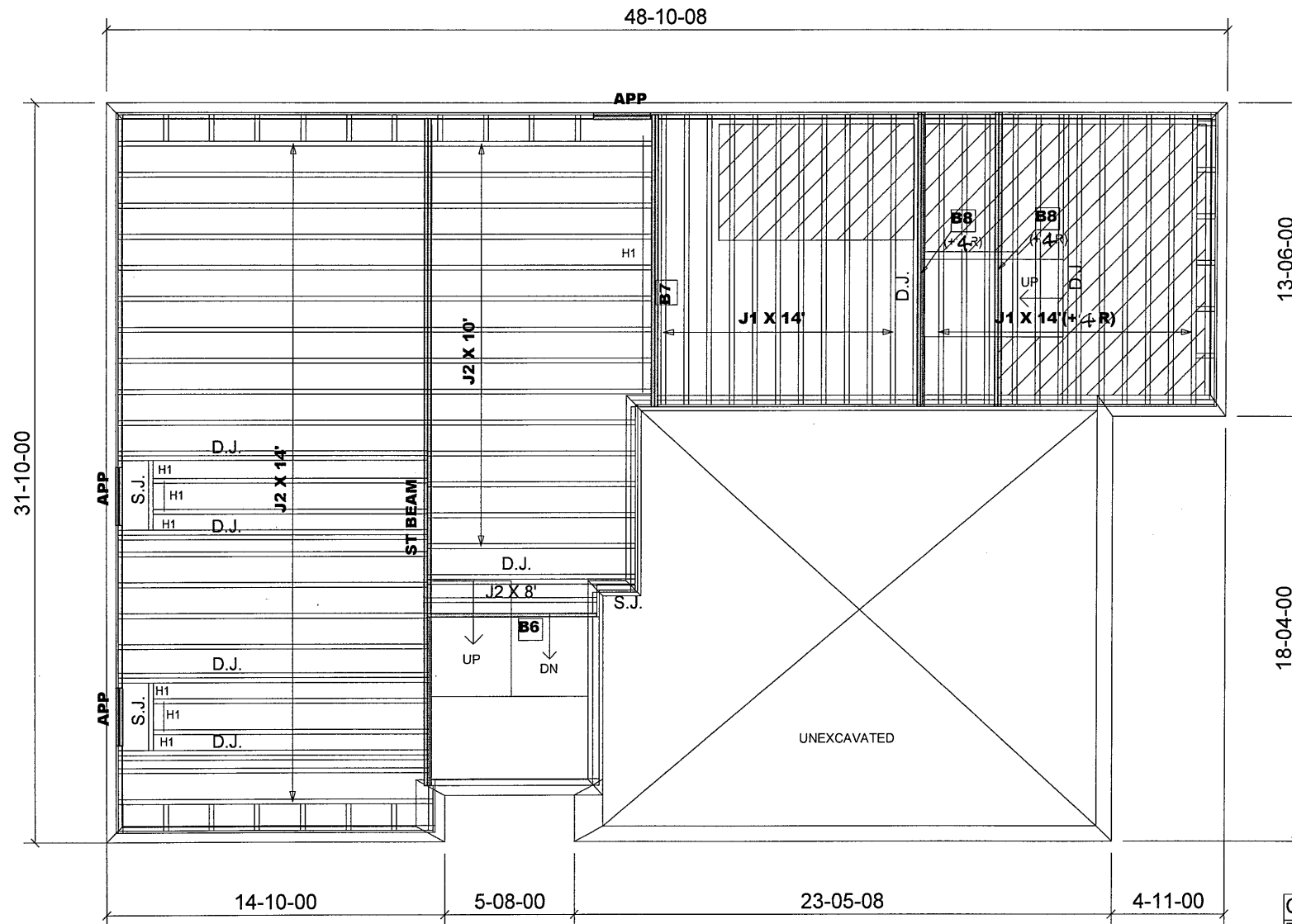
Date: August 4, 2014

Sheet: 6 of 12

Maple, Ontario

Home Lumber





Products				
PlotID	Length	Product	Plies	Net Qty
B7	13-00-00	VERSALAM-10 2.0E	2	2
B8	13-00-00	VERSALAM-10 2.0E	2	4
B6	8-00-00	VERSALAM-10 2.0E	1	1

#### JOIST SCHEDULE

J1 - 9 1/2" NI-20 @ 12" O/C  
J2 - 9 1/2" NI-20 @ 16" O/C

SUBFLOOR - 5/8" NAILED & GLUED

#### HANGER SCHEDULE

H1-----LT259 (TM)

#### NOTE:

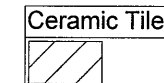
TM-----TOP MOUNT HANGERS  
FM-----FACE MOUNT HANGERS

#### RIMBOARD

1- 1/8" X 9 1/2" O.S.B.

APP - AS PER PLAN  
BBO - BEAM BY OTHERS

JOIST SPACING UNDER CERAMIC TILE IS 12" O.C.



1- 2X6 SPF#2 Squash Block req'd on one side of each joist under interior load bearing walls. Multiple Squash Blocks are req'd under concentrated loads.

### Ground Floor Framing

MODEL: 38 - 7 - ELEV.A + B  
W/OPT. GROUND FLOOR

Do not scale - refer to architectural plans for dimensions

FIRM BCIN 28103  
DESIGNER BCIN 23991

104133

82529

JT: 39002/76066

Builder: Gold Park

Location: Brampton

Designer: NL

Alpa Roof Trusses Inc.

Salesperson: Derek

File: 244317

Project: Mclaughlin and Mayfield

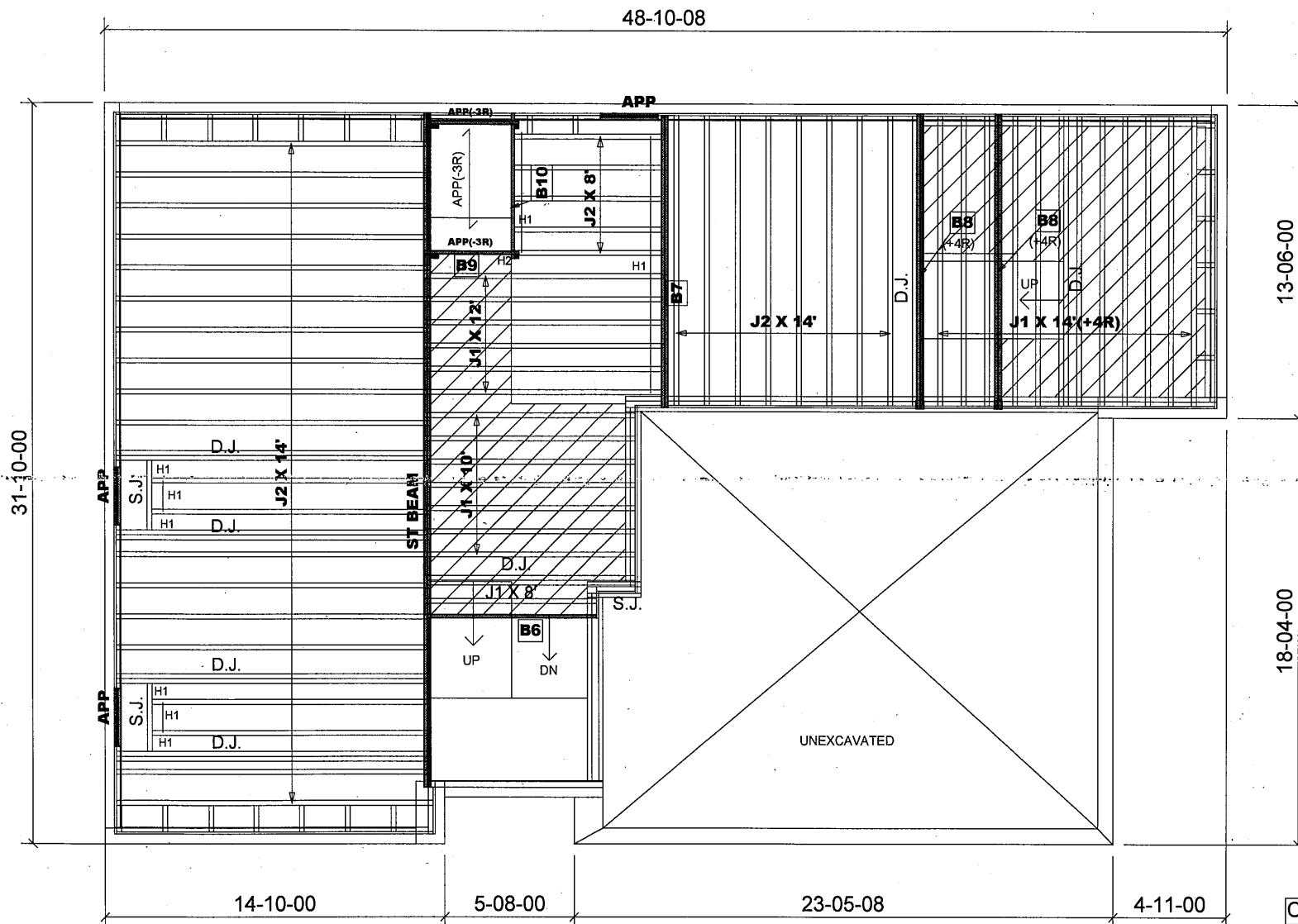
Date: August 4, 2014

Sheet: 8 of 12

Maple, Ontario

Home Lumber





Products				
PlotID	Length	Product	Plies	Net Qty
B7	13-00-00	1-3/4" x 9-1/2" VERSA-LAM® 2.0 3100 SP	2	2
B8	13-00-00	1-3/4" x 9-1/2" VERSA-LAM® 2.0 3100 SP	2	4
B6	8-00-00	1-3/4" x 9-1/2" VERSA-LAM® 2.0 3100 SP	1	1
B10	7-00-00	1-3/4" x 9-1/2" VERSA-LAM® 2.0 3100 SP	1	1
B9	4-00-00	1-3/4" x 9-1/2" VERSA-LAM® 2.0 3100 SP	1	1

#### JOIST SCHEDULE

J1 - 9 1/2" NI-20 @ 12" O/C  
J2 - 9 1/2" NI-20 @ 16" O/C

SUBFLOOR - 5/8" NAILED & GLUED

#### HANGER SCHEDULE

H1-----LT259 (TM)  
H2-----HUS1.81/10(FM)

#### NOTE:

TM -----TOP MOUNT HANGERS  
FM-----FACE MOUNT HANGERS

#### RIMBOARD

1- 1/8" X 9 1/2" O.S.B.

APP - AS PER PLAN  
BBO - BEAM BY OTHERS

JOIST SPACING UNDER CERAMIC TILE IS 12" O.C.

1- 2X6 SPF#2 Squash Block req'd on one side of each joist under interior load bearing walls. Multiple Squash Blocks are req'd under concentrated loads.

REVISION: September 23, 2019

MODEL: 38 - 7 - ELEV.A + B  
W/SUNKEN

### Ground Floor Framing

Do not scale - refer to architectural plans for dimensions

FIRM BCIN 28103  
DESIGNER BCIN 23991

JT: 39002/104133

Builder: Gold Park

Location: Brampton

Designer: NL

Alpa Roof Trusses Inc.

Salesperson: Derek

File: 308622(244317)

Project: Mclaughlin and Mayfield

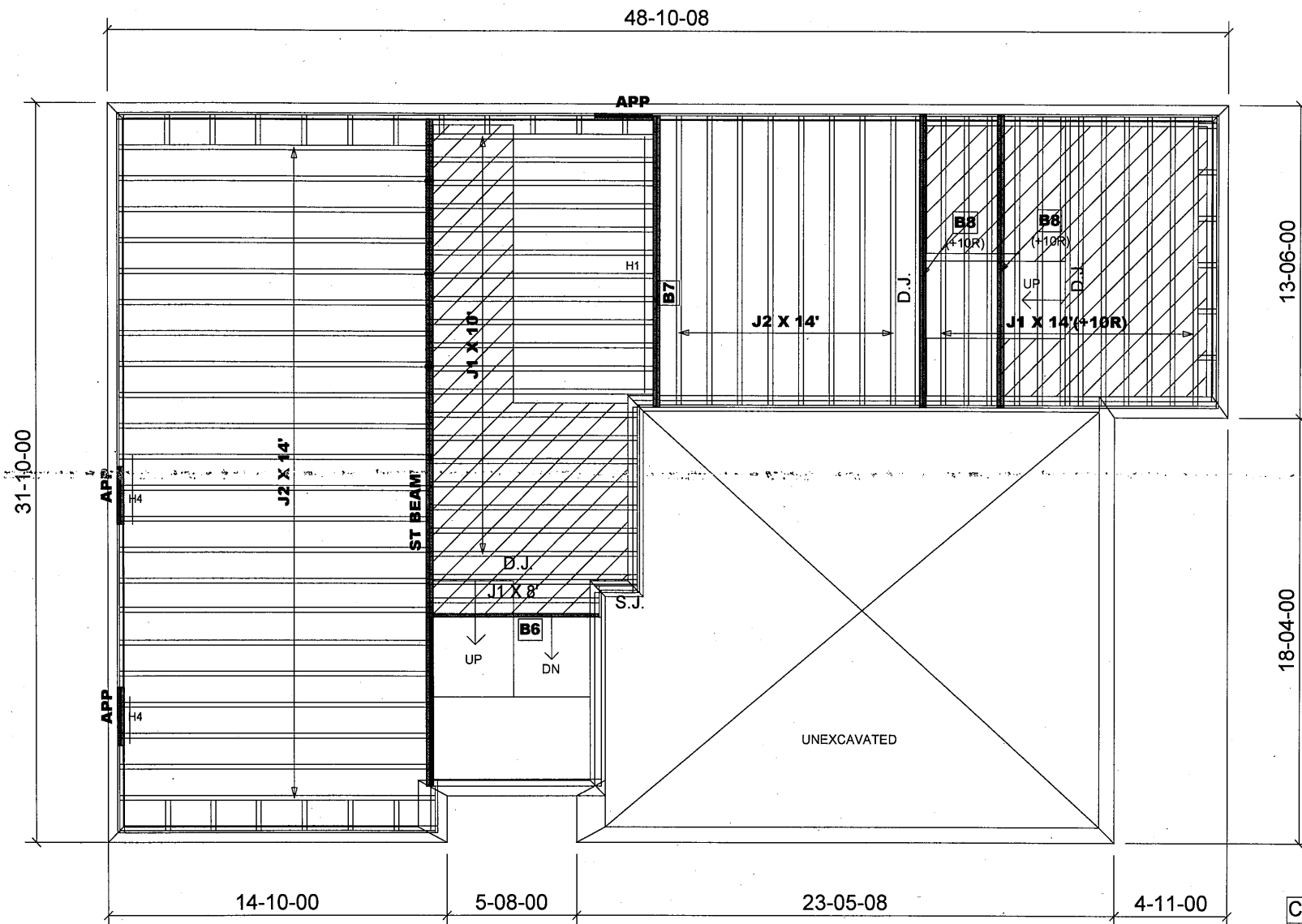
Date: April 29, 2019

Sheet: 9 of 12

Maple, Ontario

Home Lumber





Products				
PlotID	Length	Product	Plies	Net Qty
B7	13-00-00	VERSALAM-10 2.0E	2	2
B8	13-00-00	VERSALAM-10 2.0E	2	4
B6	8-00-00	VERSALAM-10 2.0E	1	1

#### JOIST SCHEDULE

J1 - 9 1/2" NI-20 @ 12" O/C  
J2 - 9 1/2" NI-20 @ 16" O/C

SUBFLOOR - 5/8" NAILED & GLUED

#### HANGER SCHEDULE

H1-----LT259 (TM)  
H4-----LF259(FM)

#### NOTE:

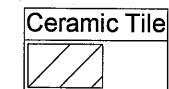
TM -----TOP MOUNT HANGERS  
FM-----FACE MOUNT HANGERS

#### RIMBOARD

1- 1/8" X 9 1/2" O.S.B.

APP - AS PER PLAN  
BBO - BEAM BY OTHERS

JOIST SPACING UNDER CERAMIC TILE IS 12" O.C.



1- 2X6 SPF#2 Squash Block req'd on one side of each joist under interior load bearing walls. Multiple Squash Blocks are req'd under concentrated loads.

MODEL: 38-7 - EL.A + B  
WW.O.D. CONDITION  
OPT. GND. FL. SIMILAR

### Ground Floor Framing

Do not scale - refer to architectural plans for dimensions

FIRM BCIN 28103  
DESIGNER BCIN 23991

JT: 39002/104133

Builder: Gold Park

Location: Brampton

Designer: NL

Alpa Roof Trusses Inc.

Salesperson: Derek

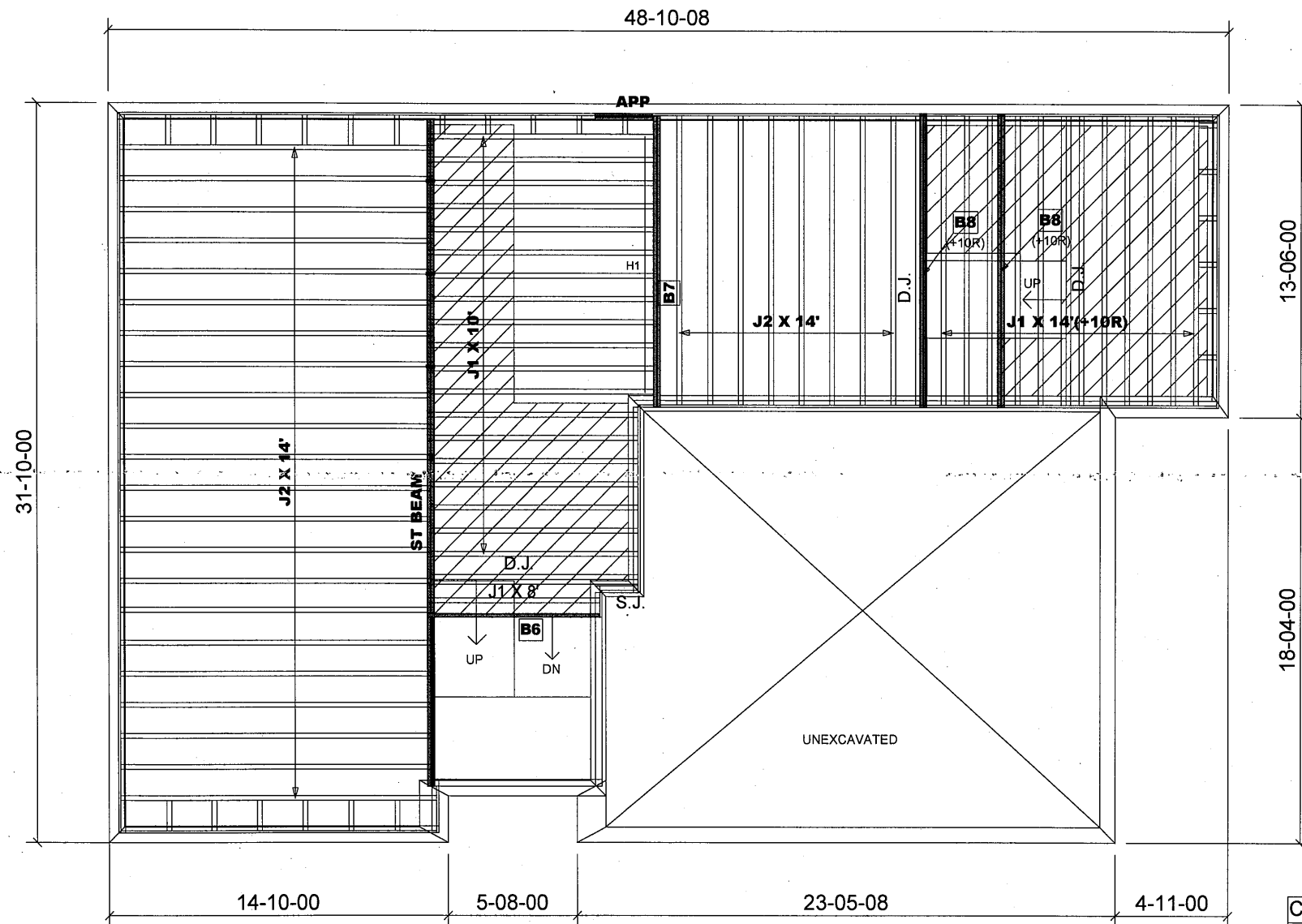
LI: 308622(244317) Project: McLaughlin and Mayfield

Date: September 23, 2019

Sheet: 11 of 12

Maple, Ontario

Home Lumber



Products				
PlotID	Length	Product	Plies	Net Qty
B7	13-00-00	VERSALAM-10 2.0E	2	2
B8	13-00-00	VERSALAM-10 2.0E	2	4
B6	8-00-00	VERSALAM-10 2.0E	1	1

#### JOIST SCHEDULE

J1 - 9 1/2" NI-20 @ 12" O/C  
J2 - 9 1/2" NI-20 @ 16" O/C

SUBFLOOR - 5/8" NAILED & GLUED

#### HANGER SCHEDULE

H1-----LT259 (TM)

#### NOTE:

TM -----TOP MOUNT HANGERS  
FM-----FACE MOUNT HANGERS

#### RIMBOARD

1- 1/8" X 9 1/2" O.S.B.

APP - AS PER PLAN  
BBO - BEAM BY OTHERS

JOIST SPACING UNDER CERAMIC TILE IS 12" O.C.

1- 2X6 SPF#2 Squash Block req'd on one side of each joist under interior load bearing walls. Multiple Squash Blocks are req'd under concentrated loads.

MODEL: 38-7 - EL.A + B  
W/L.O.B. CONDITION  
OPT. GND. FL. SIMILAR

### Ground Floor Framing

Do not scale - refer to architectural plans for dimensions

FIRM BCIN 28103  
DESIGNER BCIN 23991

JT: 39002/104133

Builder: Gold Park

Location: Brampton

Designer: NL

Alpa Roof Trusses Inc.

Salesperson: Derek

LI: 308622(244317) Project: Mclaughlin and Mayfield

Date: September 23, 2019

Sheet: 12 of 12

Maple, Ontario

Home Lumber