

Brampton Encore - 146 - 2 - 38-6 Elev.B SCARLATTI OPT- GFA1

PLUMBING

Inv.2,046	1 - ROUGH-IN - 3PC BASEMENT ROUGH-IN
Line29030	Note:
13Aug19 / 19Aug19	

Inv.2,046	1 - KITCHEN: ROUGH-IN - WATERLINE FOR FRIDGE
Line29040	Note:
13Aug19 / 19Aug19	

PLUMBING FIXTURES

Inv.2,046	1 - MASTER ENSUITE: UPGRADE TO WHIRLPOOL 6 JET TUB
Line29034	Note:
13Aug19 / 19Aug19	

TRIM AND DOORS

Inv.2,046	1 - GROUND FLOOR ONLY: UPGRADE 2 TRIM PACKAGE 3" CASING WITH BACKBAND + 5-1/4" BASEBOARD
Line29055	Note:
13Aug19 / 19Aug19	

WINDOWS - BASEMENT

Inv.2,046	3 - BASEMENT WINDOWS - UPGRADE EXISTING BASEMENT WINDOW TO 30 INCH X 24 INCH - MAY REQUIRE INSTALLATION OF WINDOW WELL
Line29031	Note:
13Aug19 / 19Aug19	

Inv.2,049	1 - BASEMENT WINDOWS - UPGRADE EXISTING BASEMENT WINDOW TO 30 INCH X 24 INCH - MAY REQUIRE INSTALLATION OF WINDOW WELL
Line29064	Note:
16Aug19 / 27Aug19	

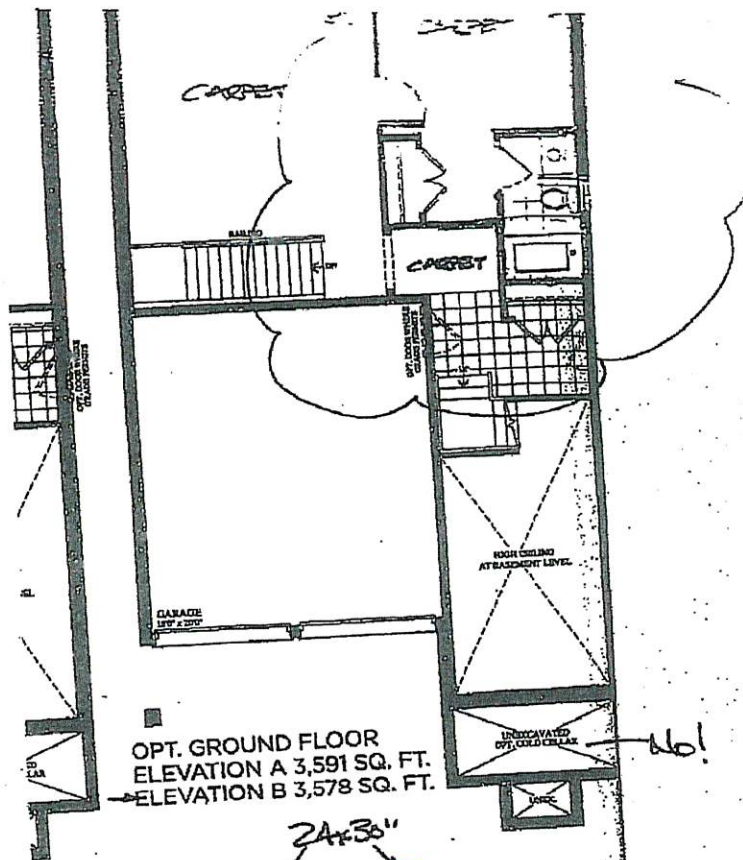
BE2-146
GROUND FLOOR

+

BASEMENT

PA

SH



REVISED Aug 16 2019

PA SH

Upgrade to 24x30"

