

Spec Sheets

Powered by SteelCod



SPECIFICATIONS INCLUDED IN THIS PACKAGE:

| |
|--|
| KRFC302ESS.pdf KRFC302ESS (KitchenAid - Refrigeration) |
| KRFC302ESS_Dimension Guide_EN.pdf KRFC302ESS (KitchenAid - Refrigeration) |
| KODE500ESS.pdf KODE500ESS (KitchenAid - Wall Oven) |
| KODE500ESS_Dimension Guide_EN.pdf KODE500ESS (KitchenAid - Wall Oven) |
| KitchenAid Wall Oven - Flush Install Accessory.pdf KODE500ESS (KitchenAid - Wall Oven) |
| KDTE234GPS.pdf KDTE234GPS (KitchenAid - Dishwasher) |
| KDTE234GPS_Dimension Guide_EN.pdf KDTE234GPS (KitchenAid - Dishwasher) |
| HPCT304GSNGLP.pdf HPCT304GSNG (Dacor - Cooktop) |
| MTE18GTKWW.pdf MTE18GTKWW (GE - Refrigeration) |

June 17, 2019
ST

Bottom Mount Refrigerator

PRODUCT MODEL NUMBERS

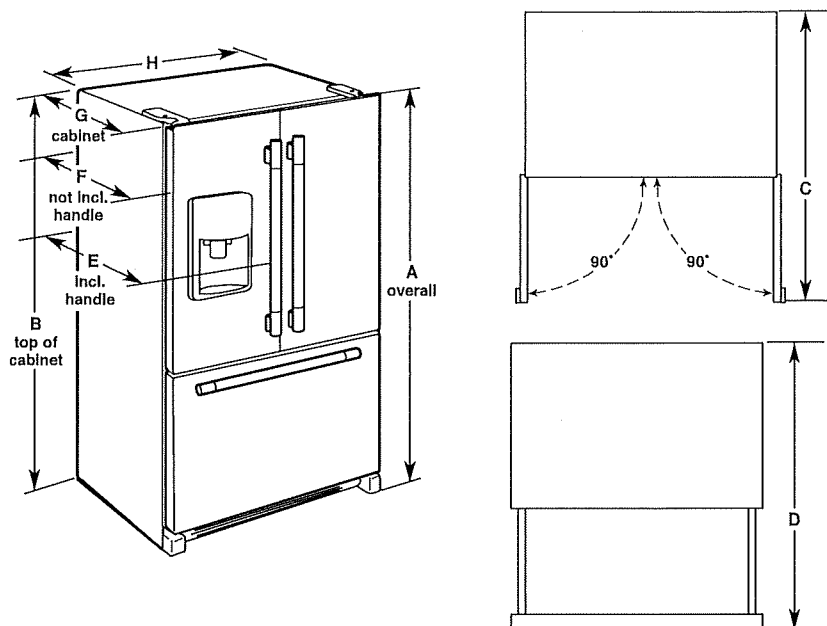
KRFC302E

Electrical: A 115 volt, 60 Hz, AC only 15- or 20-amp fused, grounded electrical supply is required. It is recommended that a separate circuit serving only your refrigerator and approved accessories be provided. Use an outlet that cannot be turned off by a switch. Do not use an extension cord.

Water: A cold water supply with water pressure of between 35 and 120 psi (241 and 827 kPa) is required to operate the water dispenser and ice maker. If you have questions about your water pressure, call a licensed, qualified plumber.

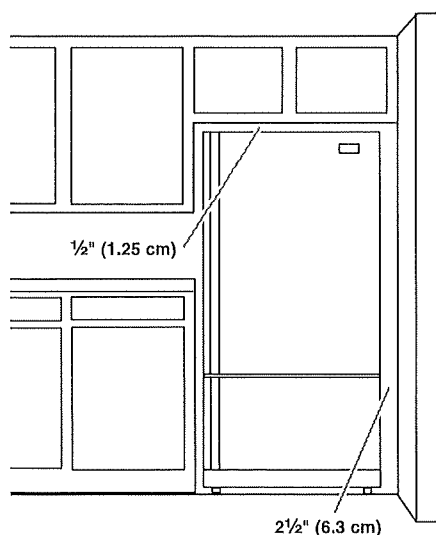
Reverse Osmosis Water Supply:
IMPORTANT: The pressure of the water supply coming out of a reverse osmosis system going to the water inlet valve of the refrigerator needs to be between 35 and 120 psi (241 and 827 kPa).

PRODUCT DIMENSIONS



| Model Size | Height - Overall "A" | Height - Top of Cabinet "B" | Depth - Doors Open 90° "C" | Depth - Drawer Open "D" | Depth - With Handles "E" | Depth - Without Handles "F" | Depth - Cabinet Only "G" | Width - Cabinet "H" |
|------------|----------------------|-----------------------------|----------------------------|-------------------------|--------------------------|-----------------------------|--------------------------|---------------------|
| 21.9 | 72" (182.9 cm) | 71 1/8" (181.3 cm) | 44 1/8" (112.1 cm) | 45 1/4" (114.9 cm) | 30 1/4" (76.8 cm) | 27 3/4" (70.5 cm) | 24 5/8" (62.5 cm) | 35 3/4" (90.8 cm) |

LOCATION REQUIREMENTS



IMPORTANT: This refrigerator is designed for indoor, household use only.

To ensure proper ventilation for your refrigerator, allow for 1/2" (1.25 cm) of space on each side and at the top. Allow for 1" (2.54 cm) of space behind the refrigerator. If your refrigerator has an ice maker, allow extra space at the back for the water line connections. When installing your refrigerator next to a fixed wall, leave 2 1/2" (6.3 cm) minimum on the hinge side (some models require more) to allow for the door to swing open.

NOTE: This refrigerator is intended for use in a location where the temperature ranges from a minimum of 55°F (13°C) to a maximum of 110°F (43°C). The preferred room temperature range for optimum performance, which reduces electricity usage and provides superior cooling, is between 60°F (15°C) and 90°F (32°C). It is recommended that you do not install the refrigerator near a heat source, such as an oven or radiator.

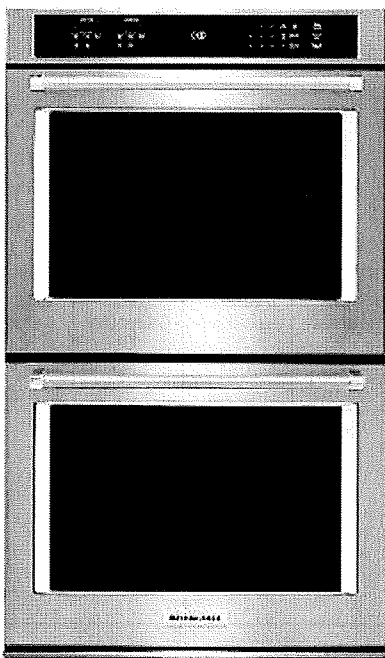
Jun 19, 2019
[Signature]

KODE500ESS

KitchenAid®

30" Double Wall Oven with Even-Heat™ True Convection

<http://www.kitchenaid.com>



Key Features:

- Even-Heat™ True Convection Oven (both ovens)
- Temperature Probe (both ovens)
- Professionally-Inspired Design
- FIT System Guarantee
- EasyConvect™ Conversion System
- 5.0 Cu. Ft. Capacity (each oven)
- Even-Heat™ Preheat
- SatinGlide™ Roll-Out Extension Rack (both ovens)
- Glass-Touch Display with Control Lock Function
- Self Cleaning Cycle

Product Dimensions:

Height: 51 1/4

Width: 30

Depth: 27 1/8

Electrical Requirements:

40 Amps.

Additional Information:

[Use And Care Guide](#)

[Dimension Guide](#)

[Installation Guide](#)

[Warranty Certificate](#)

Available in:

- Black
- Stainless Steel
- White

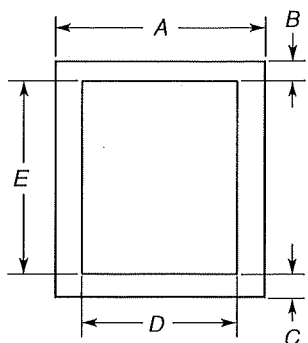
INVESTED
IN
AMERICA

June 17, 2015
SZ

©Registered trademark/TM Trademark of Whirlpool, U.S.A. © 2016 Whirlpool Corporation. All Rights Reserved.
All other trademarks are owned by their respective companies.
Because Whirlpool Corporation policy includes a continuous commitment to improve our products, we reserve the right to change materials and specifications without notice. We also reserve the right to discontinue or transition products without notice.
Manufacturer's Suggested Retail Price (MSRP) and Minimum Advertised Price (MAP) provided for reference purposes only. Dealer alone determines advertised and retail prices.
Created On: Monday, March 06, 2017 18:56:58

CABINET DIMENSIONS - SINGLE OVENS

Single Oven Undercounter (without cooktop installed above)



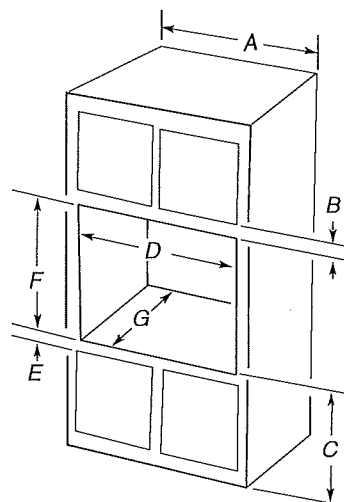
27" (68.6 cm) models

- A. 27" (68.6 cm) min. cabinet width
- B. 1½" (3.8 cm) min. top of cutout to underside of countertop
- C. 5¼" (13.3 cm) bottom of cutout to floor
- D. 25½" (64.8 cm) cutout width
- E. 28" (71.2 cm) min. cutout height

30" (76.2 cm) models

- A. 30" (76.2 cm) min. cabinet width
- B. 1½" (3.8 cm) min. top of cutout to underside of countertop
- C. 5¼" (13.3 cm) bottom of cutout to floor
- D. 28½" (72.4 cm) cutout width
- E. 28" (71.2 cm) min. cutout height

Single Ovens Installed in Cabinet



27" (68.6 cm) models

- A. 27" (68.6 cm) min. cabinet width
- B. 1" (2.5 cm) top of cutout to bottom of upper cabinet door
- C. 32" (81.3 cm) bottom of cutout to floor
- D. 25½" (64.8 cm) cutout width
- E. 1½" (3.8 cm) min. bottom of cutout to top of cabinet door
- F. 28" (71.2 cm)* recommended cutout height
- G. 24" (60.7 cm) cutout depth

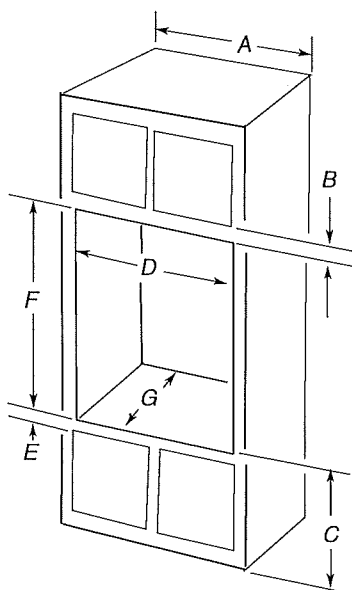
30" (76.2 cm) models

- A. 30" (76.2 cm) min. cabinet width
- B. 1" (2.5 cm) top of cutout to bottom of upper cabinet door
- C. 32" (81.3 cm) bottom of cutout to floor
- D. 28½" (72.4 cm) cutout width
- E. 1½" (3.8 cm) min. bottom of cutout to top of cabinet door
- F. 28" (71.2 cm)* recommended cutout height
- G. 24" (60.7 cm) cutout depth

***NOTE:** The cutout height can be between 26½" (68.4 cm) and 29⅞" (74.8 cm) for single ovens.

CABINET DIMENSIONS - SINGLE OVENS

Double Ovens Installed in Cabinet



27" (68.6 cm) models

- A. 27" (68.6 cm) min. cabinet width
- B. 1" (2.5 cm) top of cutout to bottom of upper cabinet door
- C. 14¾" (37.5 cm) bottom of cutout to floor is recommended. 4"-14¾" (10.2-37.5 cm) bottom of cutout to floor is acceptable.
- D. 25½" (64.8 cm) cutout width
- E. 1½" (3.8 cm) min. bottom of cutout to top of cabinet door
- F. 50¼" (127.6 cm)* recommended cutout height
- G. 24" (60.7 cm) cutout depth

30" (76.2 cm) models

- A. 30" (76.2 cm) min. cabinet width
- B. 1" (2.5 cm) top of cutout to bottom of upper cabinet door
- C. 14¾" (37.5 cm) bottom of cutout to floor is recommended. 4"-14¾" (10.2-37.5 cm) bottom of cutout to floor is acceptable.
- D. 28½" (72.4 cm) cutout width
- E. 1½" (3.8 cm) min. bottom of cutout to top of cabinet door
- F. 50¼" (127.6 cm)* recommended cutout height
- G. 24" (60.7 cm) cutout depth

***NOTE:** The cutout height can be between 48⅞" (124.1 cm) and 52⅞" (132.6 cm) for double ovens.

June 17, 2019
SZ

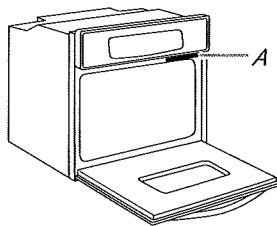
27" (68.6 CM) AND 30" (76.2 CM) ELECTRIC SINGLE AND DOUBLE BUILT-IN OVEN

PRODUCT MODEL NUMBERS

| | | |
|----------|----------|----------|
| KODE300E | KODT100E | KOST100E |
| KODE307E | KODT107E | KOST107E |
| KODE500E | KOSE500E | KEBS109E |
| KODE507E | KOSE507E | KEBS209E |
| | | KEBS207E |

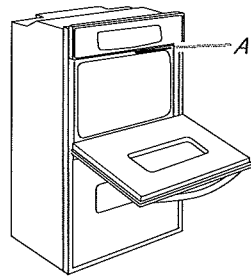
Electrical: To properly install your oven, you must determine the type of electrical connection you will be using and follow the instructions provided for it here.

- Oven must be connected to the proper electrical voltage and frequency as specified on the model/serial number rating plate. The model/serial number rating plate is located under the control panel on single ovens and under the control panel on the upper oven cavity on double ovens. See the following illustrations.



Single Oven

A. Model/serial number plate



Double Oven

A. Model/serial number plate

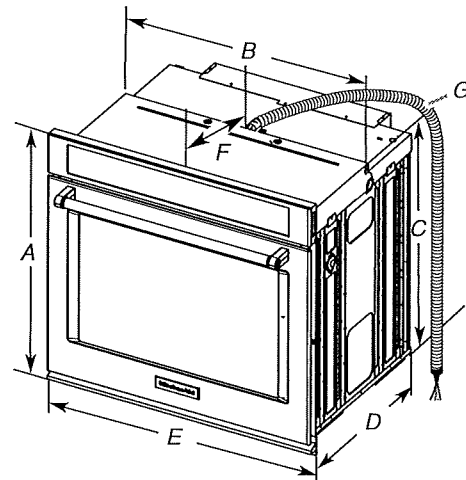
- Models rated from 7.3 to 9.6 kW at 240 volts (5.4 to 7.4 kW at 208 volts) require a separate 40-amp circuit. Models rated at 4.8 kW and below at 240 volts (3.6 kW and below at 208 volts) require a separate 20-amp circuit.
- A circuit breaker is recommended.
- Connect directly to the circuit breaker box (or fused disconnect) through flexible, armored or nonmetallic sheathed, copper cable (with grounding wire). See "Make Electrical Connection" section.
- Flexible conduit from the oven should be connected directly to the junction box.
- Fuse both sides of the line.
- Do not cut the conduit. The length of conduit provided is for serviceability of the oven.
- A UL listed or CSA approved conduit connector must be provided.
- If the house has aluminum wiring, follow the procedure below:
 - Connect a section of solid copper wire to the ends of the flexible conduit leads.
 - Connect the aluminum wiring to the added section of copper wire using special connectors and/or tools designed and UL listed for joining copper to aluminum.

Follow the electrical connector manufacturer's recommended procedure. Aluminum/copper connection must conform with local codes and industry accepted wiring practices.

For power requirements for models KOST107E, KOST100E, KOSE507E, KOSE500E, KODE307E, KODE300E, KODE507E, KODE500E, KODT100E and KODT107E, refer to the following table.

| Voltage | Single Thermal | Single Convect | Double Thermal | Double Convect | Double Convect/Thermal |
|---------|----------------|----------------|----------------|----------------|------------------------|
| 240 VAC | 4100 W | 4100 W | 8163 W | 8300 W | 8300 W |
| 208 VAC | 3100 W | 3100 W | 6300 W | 6300 W | 6300 W |
| 240 VAC | 17.2 A | 17.2 A | 34.2 A | 34.2 A | 34.2 A |
| 208 VAC | 15.0 A | 15.0 A | 29.9 A | 29.9 A | 29.9 A |

PRODUCT DIMENSIONS

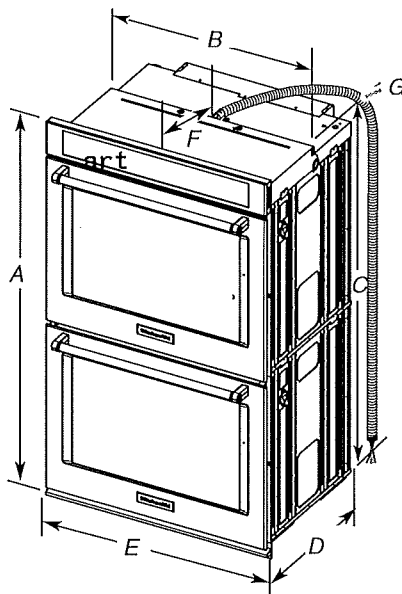


27" (68.6 cm) models

- A. 28³/₄" (72.8 cm) max. overall height
- B. 25⁷/₁₆" (64.6 cm) max. recessed width
- C. 26³/₄" (67.9 cm) recessed height
- D. 23¹/₄" (59.1 cm) max. recessed depth
- E. 27" (68.6 cm) overall width
- F. 12" (30.5 cm) from back of control panel to start of strain relief
- G. 48" (121.9 cm) flexible conduit length

30" (76.2 cm) models

- A. 28³/₄" (72.8 cm) max. overall height
- B. 28¹/₂" (72.4 cm) max. recessed width
- C. 26³/₄" (67.9 cm) recessed height
- D. 23¹/₄" (59.1 cm) max. recessed depth
- E. 30" (76.2 cm) overall width
- F. 12" (30.5 cm) from back of control panel to start of strain relief
- G. 48" (121.9 cm) flexible conduit length



27" (68.6 cm) models

- A. 51¹/₁₆" (130.0 cm) max. overall height
- B. 25⁷/₁₆" (64.6 cm) max. recessed width
- C. 48¹/₁₆" (124.0 cm) recessed height
- D. 23¹/₄" (59.1 cm) max. recessed depth
- E. 27" (68.6 cm) overall width
- F. 12" (30.5 cm) from back of control panel to start of strain relief
- G. 66" (167.6 cm) flexible conduit length

30" (76.2 cm) models

- A. 51¹/₁₆" (130.0 cm) max. overall height
- B. 28¹/₂" (72.4 cm) max. recessed width
- C. 48¹/₁₆" (124.0 cm) recessed height
- D. 23¹/₄" (59.1 cm) max. recessed depth
- E. 30" (76.2 cm) overall width
- F. 12" (30.5 cm) from back of control panel to start of strain relief
- G. 66" (167.6 cm) flexible conduit length

June 19, 2019
for

INSTALLATION INSTRUCTIONS

27" (68.6 CM) AND 30" (76.2 CM) ELECTRIC SINGLE AND DOUBLE BUILT-IN OVEN

FLUSH INSTALLATION KIT

INSTRUCTIONS D'INSTALLATION

ENSEMBLE D'INSTALLATION EN AFFLEUREMENT POUR FOUR ÉLECTRIQUE ENCASTRÉ SIMPLE ET DOUBLE DE 27" (68,6 CM) ET 30" (76,2 CM)

| Flush Installation Kit Part Number Ensemble d'installation en affleurement référence | Size and Color Dimensions et couleur | UL Listed for Model Numbers Homologation UL pour les modèles numéro |
|---|---|--|
| W10752685 | 27" (68.6 cm), black 27" (66,6 cm), noir | KODE507EBL, KOSE507EBL |
| W10752684 | 27" (68.6 cm), white 27" (68,6 cm), blanc | KODE507EWH, KOSE507EWH |
| W10752686 | 27" (68.6 cm), stainless steel 27" (68,6 cm), acier inoxydable | KODT107ESS, KOST107ESS, KODE307ESS, KODE507ESS, KOSE507ESS |
| W10752681 | 30" (76.2 cm), black 30" (76,2 cm), noir | KODE500EBL, KOSE500EBL |
| W10752682 | 30" (76.2 cm), black stainless 30" (76,2 cm), noir inoxydable | KODE500EBS, KOSE500EBS, KOSE900HBS, KODE900HBS |
| W10752680 | 30" (76.2 cm), white 30" (76,2 cm), blanc | KODE500EWH, KOSE500EWH |
| W10752683 | 30" (76.2 cm), stainless steel 30" (76,2 cm), acier inoxydable | KODT100ESS, KOST100ESS, KODE300ESS, KODE500ESS, KOSE500ESS, KOSE900HSS, KODE900HSS |

Table of Contents/Table des matières

| | | | |
|--|---|--|----|
| BUILT-IN OVEN SAFETY | 2 | SÉCURITÉ DU FOUR ENCASTRÉ | 10 |
| INSTALLATION REQUIREMENTS | 2 | EXIGENCES D'INSTALLATION | 11 |
| Tools and Parts..... | 2 | Outils et pièces..... | 11 |
| Location Requirements..... | 2 | Exigences d'emplacement..... | 11 |
| INSTALLATION INSTRUCTIONS | 5 | INSTRUCTIONS D'INSTALLATION | 14 |
| Prepare Built-In Oven..... | 5 | Préparation du four encastré..... | 14 |
| Remove Oven Door(s)..... | 5 | Dépose de la/des porte(s) du four..... | 14 |
| Replace Oven Door(s)..... | 6 | Réinstallation de la/des porte(s) du four..... | 14 |
| Positioning Oven Feet..... | 6 | Positionnement des pieds du four..... | 15 |
| Replace Plastic Spacers..... | 7 | Remplacement des cales d'espacement en plastique..... | 16 |
| Install Oven..... | 8 | Installation du four..... | 17 |
| Install Deflector Kit Bracket..... | 9 | Installation du support de la trousse du déflecteur..... | 18 |
| Complete Installation..... | 9 | Achever l'installation..... | 19 |

IMPORTANT:

Save for local electrical inspector's use.

IMPORTANT :

À conserver pour consultation par l'inspecteur local des installations électriques.

W10584335C

June 17, 2019
SK

BUILT-IN OVEN SAFETY

Your safety and the safety of others are very important.

We have provided many important safety messages in this manual and on your appliance. Always read and obey all safety messages.



This is the safety alert symbol.

This symbol alerts you to potential hazards that can kill or hurt you and others.

All safety messages will follow the safety alert symbol and either the word "DANGER" or "WARNING."

These words mean:

DANGER

You can be killed or seriously injured if you don't immediately follow instructions.

WARNING

You can be killed or seriously injured if you don't follow instructions.

All safety messages will tell you what the potential hazard is, tell you how to reduce the chance of injury, and tell you what can happen if the instructions are not followed.

INSTALLATION REQUIREMENTS

Tools and Parts

Gather the required tools and parts before starting installation. Read and follow the instructions provided with any tools listed here.

Tools Needed

- Phillips screwdriver
- Measuring tape
- Drill (for wall cabinet installations)
- 1/8" (3 mm) drill bit (for wall cabinet installations)
- Level
- Flat-blade screwdriver

Parts Needed

- #8-14 x 1" (2.5 cm) screws - (2) single ovens, (4) double ovens included with built-in oven
- (2) #8-18 x 3/8" (9.5 mm) screws - bottom vent included with built-in oven
- (4) #8-18 x 3/8" (9.5 mm) screws - double oven feet included with built-in oven
- Bottom vent included with built-in oven
- (2) feet double oven included with built-in oven
- (2) front feet double oven included with built-in oven

Parts Supplied

- Deflector bracket



- Plastic spacers - (2) single ovens, (4) double ovens



- #8-18 x 1/8" (3 mm) screws - (2) for 27" (68.6 cm) models, (4) for 30" (76.2 cm) models

Location Requirements

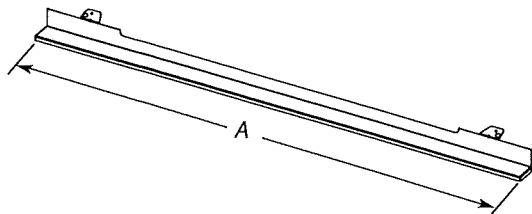
IMPORTANT: Observe all governing codes and ordinances.

NOTE: Refer to the following "Location Requirements" and the "Location Requirements" section of the Installation Instructions provided with your built-in oven.

- Cabinet opening dimensions that are shown must be used. Given dimensions provide minimum clearance with oven.
- Recessed installation area must provide complete enclosure around the recessed portion of the oven.
- Oven support surface must be solid, level, and flush with bottom of cabinet cutout.
- Floor must be able to support a single oven weight of 129 lbs (59 kg) for 27" (68.6 cm) models or 154 lbs (70 kg) for 30" (76.2 cm) models.
- Floor must be able to support a double oven weight of 251 lbs (114 kg) for 27" (68.6 cm) models or 288 lbs (131 kg) for 30" (76.2 cm) models.

IMPORTANT: To avoid damage to your cabinets, check with your builder or cabinet supplier to make sure that the materials used will not discolor, delaminate, or sustain other damage. This oven has been designed in accordance with the requirements of UL and CSA International and complies with the maximum allowable wood cabinet temperatures of 194°F (90°C).

Deflector Bracket Dimensions



27" (68.6 cm) Models

A. 26¹⁵/₁₆" (68.4 cm) overall width

30" (76.2 cm) Models

A. 29¹⁵/₁₆" (76 cm) overall width

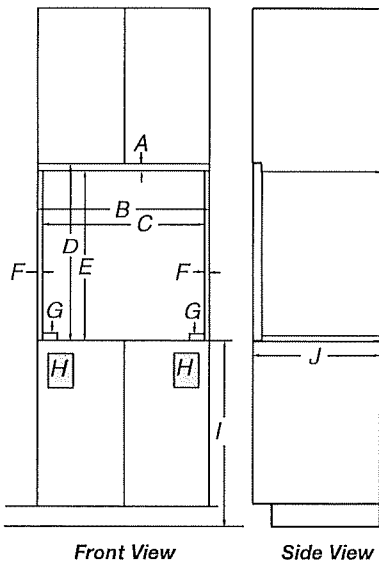
Cabinet Dimensions - Single Ovens, Flush Installations

A 25" (63.5 cm) minimum cutout depth is required.

These dimensions will result in a 1/4" (6 mm) reveal on the top, a 1/4" (6 mm) reveal on the sides, and a 1/8" (3 mm) reveal on the bottom of the wall oven.

The front face of the cleats and platform will be visible and should be treated as a finished surface.

Single Ovens Installed in Cabinet - Flush Installation



Front View

Side View

27" (68.6 cm) Models

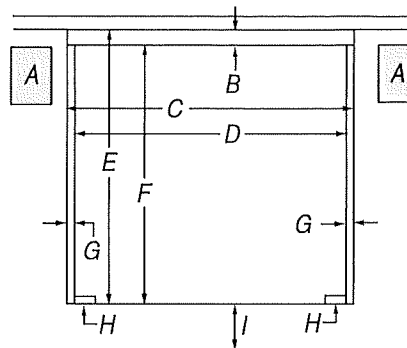
- A. 3/4" (1.9 cm) top cleat*
- B. 27¹/₄" (69.2 cm) minimum width of flush inset cutout
- C. 25⁷/₈" (65.7 cm) minimum width of opening
- D. 29¹/₄" (74.3 cm) minimum height of flush inset cutout
- E. 28¹/₂" (72.4 cm) recommended cutout height
- F. 1¹/₁₆" (17 mm) side cleat*
- G. 1/2" x 2" (13 mm x 5.1 cm) spacer the entire depth of the cutout*
- H. Recommended junction box location
- I. 4⁵/₈" - 32" (11.7 - 81.3 cm) bottom of cutout to floor
- J. 25" (63.5 cm) minimum depth of cutout

30" (76.2 cm) Models

- A. 3/4" (19 mm) top cleat*
- B. 30¹/₄" (76.8 cm) minimum width of flush inset cutout
- C. 28⁷/₈" (73.3 cm) minimum width of opening
- D. 29¹/₄" (74.3 cm) minimum height of flush inset cutout
- E. 28¹/₂" (72.4 cm) recommended cutout height
- F. 1¹/₁₆" (17 mm) side cleat*
- G. 1/2" x 2" (1.3 cm x 5.1 cm) spacer the entire depth of the cutout*
- H. Recommended junction box location
- I. 4⁵/₈" - 32" (11.7 - 81.3 cm) bottom of cutout to floor
- J. 25" (63.5 cm) minimum depth of cutout

* Cleats and spacers must be recessed 1³/₈" (3.5 cm) from the front of the cabinet.

Single Ovens Undercounter - Flush Installations (without cooktop installed above)



Front View

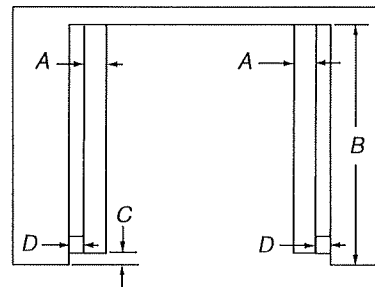
27" (68.6 cm) Models

- A. Recommended junction box location
- B. 3/4" (19 mm) top cleat*
- C. 27¹/₄" (69.2 cm) minimum width of flush inset cutout
- D. 25⁷/₈" (65.7 cm) minimum width of opening
- E. 29¹/₄" (74.3 cm) minimum height of flush inset cutout
- F. 28¹/₂" (72.4 cm) recommended cutout height
- G. 1¹/₁₆" (17 mm) side cleat*
- H. 1/2" x 2" (13 mm x 5.1 cm) spacer the entire depth of the cabinet*
- I. 4⁵/₈" (11.7 cm) bottom of cutout to floor

30" (76.2 cm) Models

- A. Recommended junction box location
- B. 3/4" (19 mm) top cleat*
- C. 30¹/₄" (76.8 cm) minimum width of flush inset cutout
- D. 28⁷/₈" (73.3 cm) minimum width of opening
- E. 29¹/₄" (74.3 cm) minimum height of flush inset cutout
- F. 28¹/₂" (72.4 cm) recommended cutout height
- G. 1¹/₁₆" (17 mm) side cleat*
- H. 1/2" x 2" (13 mm x 5.1 cm) spacer the entire depth of the cabinet*
- I. 4⁵/₈" (11.7 cm) bottom of cutout to floor

* Cleats and spacers must be recessed 1³/₈" (3.5 cm) from the front of the cabinet.



Top View

27" (68.6 cm) Models

- A. 1/2" x 2" (1.3 cm x 5.1 cm) spacer the entire depth of the cutout*
- B. 25" (63.5 cm) depth of cutout
- C. 1³/₈" (3.5 cm) recess from front of cabinet
- D. 1¹/₁₆" (1.7 cm) side cleat*

30" (76.2 cm) Models

- A. 1/2" x 2" (1.3 cm x 5.1 cm) spacer the entire depth of the cutout*
- B. 25" (63.5 cm) depth of cutout
- C. 1³/₈" (3.5 cm) recess from front of cabinet
- D. 1¹/₁₆" (1.7 cm) side cleat*

* Cleats and spacers must be recessed 1³/₈" (3.5 cm) from the front of the cabinet.

June 17, 2019
SK

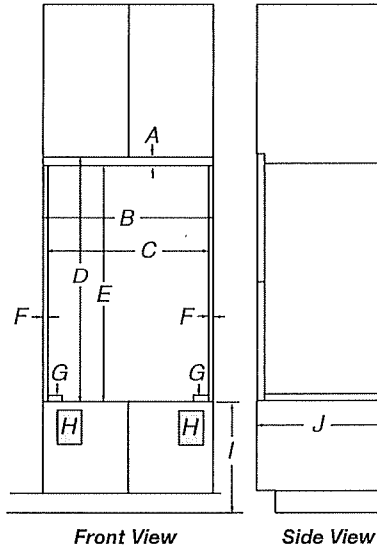
Cabinet Dimensions - Double Ovens, Flush Installations

A 25³/₈" (64.4 cm) minimum cutout depth is required.

These dimensions will result in a 1/4" (6 mm) reveal on the top, a 1/4" (6 mm) reveal on the sides, and a 1/8" (3 mm) reveal on the bottom of the wall oven.

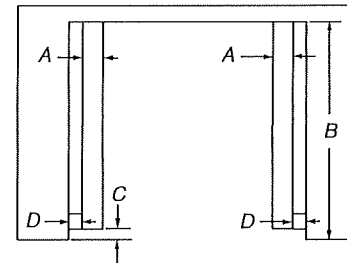
The front face of the cleats and platform will be visible and should be treated as a finished surface.

Double Ovens Installed in Cabinet - Flush Installations



Front View

Side View



Top View

27" (68.6 cm) Models

- A. 1/2" x 2" (1.3 cm x 5.1 cm) spacer the entire depth of the cutout*
- B. 25³/₈" (64.4 cm) depth of cutout
- C. 1³/₈" (3.5 cm) recess from front of cabinet
- D. 11/16" (1.7 cm) side cleat*

30" (76.2 cm) Models

- A. 1/2" x 2" (1.3 cm x 5.1 cm) spacer the entire depth of the cutout*
- B. 25³/₈" (64.4 cm) depth of cutout
- C. 1³/₈" (3.5 cm) recess from front of cabinet
- D. 11/16" (1.7 cm) side cleat*

* Cleats and spacers must be recessed 1³/₈" (3.5 cm) from the front of the cabinet.

27" (68.6 cm) Models

- A. 9/16" (1.4 cm) top cleat*
- B. 27 1/4" (69.2 cm) minimum width of flush inset cutout
- C. 25 7/8" (65.7 cm) minimum width of opening
- D. 52" (132.1 cm) minimum height of flush inset cutout
- E. 51 7/16" (130.6 cm) recommended cutout height
- F. 11/16" (17 mm) side cleat*
- G. 1/2" x 2" (1.3 cm x 5.1 cm) spacer the entire depth of the cutout*
- H. Recommended junction box location
- I. 4 5/8" - 14 3/4" (11.7 - 37.5 cm) bottom of cutout to floor
- J. 25 3/8" (64.4 cm) minimum depth of cutout

30" (76.2 cm) Models

- A. 9/16" (1.4 cm) top cleat*
- B. 30 1/4" (76.8 cm) minimum width of flush inset cutout
- C. 28 7/8" (73.3 cm) minimum width of opening
- D. 52" (132.1 cm) minimum height of flush inset cutout
- E. 51 7/16" (130.6 cm) recommended cutout height
- F. 11/16" (17 mm) side cleat*
- G. 1/2" x 2" (1.3 cm x 5.1 cm) spacer the entire depth of the cutout*
- H. Recommended junction box location
- I. 4 5/8" - 14 3/4" (11.7 - 37.5 cm) bottom of cutout to floor
- J. 25 3/8" (64.4 cm) minimum depth of cutout

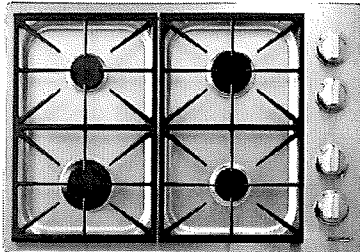
* Cleats and spacers must be recessed 1³/₈" (3.5 cm) from the front of the cabinet.

June 17, 2015



30-INCH PRO GAS COOKTOP

HPCT304GS | HERITAGE COLLECTION



FEATURES & BENEFITS

- Illumina Burner™ Controls glow Dacor's signature flame-blue to always let you know when a burner is on.
- SimmerSear™ Burners provide up to 18,000 BTUs and achieve ultra-low temperatures for simmering and melting without any scorching.
- Exclusive Bead-Blasted, PermaClean™ Finish on a one-piece sealed spill basin makes cleaning easy and keeps cooktop scratch-free.
- Burner Configuration: 4 Burners (46,500 Total BTUs)
 - 1 SimmerSear Burner (15,000 BTU)
 - 1 Dual-Stacked Sealed Burner (12,500 BTU)
 - 2 Dual-Stacked Sealed Burners (9,500 BTU) - HPCT304
- Continuous Platform Grates are porcelain coated and allow extra large pots and pans to be moved effortlessly from burner to burner.
- Perma-Flame™ Technology automatically re-ignites a flame for continuous heating and uninterrupted cooking should a burner unexpectedly go out.
- Downdraft Compatible (MRV3015S)

GENERAL PROPERTIES

| | |
|--------|-----------------|
| FINISH | STAINLESS STEEL |
|--------|-----------------|

OPTIONAL ACCESSORIES

| | |
|----------|------|
| WOK RING | AWR4 |
|----------|------|

TECHNICAL INFORMATION

| | |
|-------------------------|--|
| ELECTRICAL REQUIREMENTS | 120VAC/60HZ/15AMP |
| TOTAL CONNECTED LOAD | 0.25A (0.03KW) |
| GAS CONFIGURATIONS | NG - NATURAL GAS NG / H - NATURAL GAS / HIGH ALTITUDE LP - LIQUID PROPANE LP / H - LIQUID PROPANE / HIGH ALTITUDE |

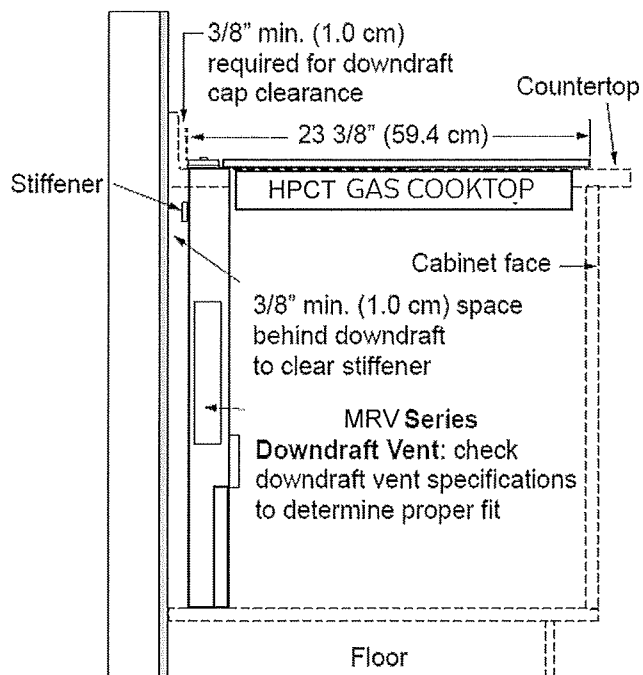
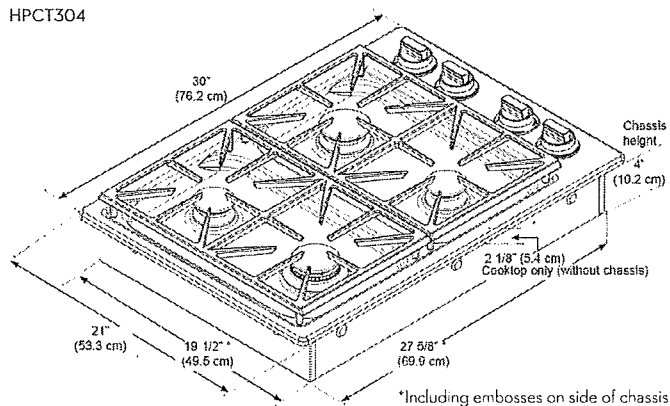
PRODUCT DIMENSIONS

| | |
|--|--|
| APPLIANCE DIMENSIONS (H X W X D) (IN.) | 21" X 30" X 4" |
| ALL TOLERANCES | ± 1/16" (± 1.6MM) UNLESS OTHERWISE NOTED |

June 17, 2019
SZ

| INSTALLATION TYPE | (C) | (D) | (E) | (F) |
|-------------------------------|--------------------|----------------------|----------------------|---------------------|
| HPCT304G W/ NO DOWNDRAFT VENT | 2 7/8" (7.3 CM) | 19 3/4" (50.2 CM) | 27 5/8" (70.1 CM) | 7 1/2" (19.1 CM) |
| HPCT304G W/ MRV30I55 | 3/8" (1.0CM) | 22 1/2" (57.2CM) | | |

HPCT304



Cooktop with
MRV Series Downdraft Vent

June 17, 2019
SZ