

CENTRAL VAC AND WIRING

Inv.1,673	1 - CONDUIT PIPE- FOR TELEVISION- MUST SPECIFY LOCATION AND TERMINATION POINT
Line25060	Note:
8Dec17 / 18Dec17	

Inv.1,673	1 - INSTALL ROUGH-IN FOR VAC PAN UNDER KITCHEN SINK
Line25063	Note:
8Dec17 / 18Dec17	

CONCRETE AND DRAIN

Inv.1,673	1 - ROUGH-IN - 3PC BASEMENT ROUGH-IN
Line25076	Note:
8Dec17 / 18Dec17	

Inv.1,673	1 - COLD CELLAR
Line25084	Note:
8Dec17 / 18Dec17	

DRYWALL

Inv.1,673	1 - SMOOTH CEILINGS - (2-Story Design) 2ND FLOOR
Line25073	Note:
8Dec17 / 18Dec17	

ELECTRICAL

Inv.1,673	1 - 220V WALL RECEPTICAL ON DEDICATED CIRCUIT- FOR 4 WIRE BUILT-IN WALL OVEN - SEE PLAN FOR LOCATION
Line25064	Note:
8Dec17 / 18Dec17	

Inv.1,673	1 - KITCHEN CABINET VALANCE LIGHTS (UNDER CABINETS) - WITH STRIP LIGHTS - DOES NOT INCLUDE (AND REQUIRES) KITCHEN UPGRADE PRICING
Line25065	Note:
8Dec17 / 18Dec17	

Inv.1,673	4 - BREAKFAST: INSTALL FOUR (4X) POT LIGHT: 4 INCH HALOGEN POT LIGHT - 440 WH
Line25066	Note:
8Dec17 / 18Dec17	

Inv.1,673	1 - KITCHEN: ADDITIONAL CAPPED ROUGH-IN OVER ISLAND FOR FUTURE PENDANT LIGHT-ON SAME SWITCH
Line25067	Note:
8Dec17 / 18Dec17	

Inv.1,673	1 - KITCHEN: ADDITIONAL CAPPED ROUGH-IN OVER ISLAND FOR FUTURE PENDANT LIGHT-ON SEPERATE SWITCH
Line25068	Note:
8Dec17 / 18Dec17	

Inv.1,673	1 - KITCHEN: GAS LINE AND 110V WALL RECEPTACLE ON DEDICATED CIRCUIT - FOR GAS FIRED STOVE
Line25069	Note:
8Dec17 / 18Dec17	

Inv.1,673	6 - FAMILY ROOM: INSTALL SIX (6X) POT LIGHT: 4 INCH HALOGEN POT LIGHT - 440 WH
Line25081	Note:
8Dec17 / 18Dec17	

Brampton Encore - 93 - 2 - 38-6 Elev.B SCARLATTI OPT- GFA1

Inv.1,673	6 - LIVING ROOM: INSTALL SIX (6X) POT LIGHT: 4 INCH HALOGEN POT LIGHT - 440 WH
Line25082	Note:
8Dec17 / 18Dec17	

Inv.1,675	1 - KITCHEN: ROUGH - IN CEILING OUTLET ON SAME SWITCH FOR FUTURE PENDANT LIGHT- DOES NOT INCLUDE FIXTURE
Line25091	Note:
8Dec17 / 8Dec17	

Inv.1,692	1 - 110V WALL RECEPTACLE ON DEDICATED CIRCUIT- FOR TELEVISION OVER FIREPLACE
Line25324	Note:
18Dec17 / 18Dec17	

Exterior Colours

Inv.1,673	1 - EXTERIOR COLOUR PACKAGE #6
Line25089	Note:
8Dec17 / 18Dec17	

FORMING

Inv.1,673	1 - SIDE DOOR- HOME TO EXTERIOR- AS PER PLAN AND GRADE PERMITTING
Line25061	Note:
8Dec17 / 18Dec17	

Inv.1,673	1 - COLD CELLAR
Line25070	Note:
8Dec17 / 18Dec17	

Inv.1,673	1 - SIDE DOOR- HOME TO EXTERIOR- AS PER PLAN AND GRADE PERMITTING
Line25071	Note:
8Dec17 / 18Dec17	

FRAMING

Inv.1,673	1 - MANDOOR - GARAGE TO HOUSE- AS PER PLAN AND GRADE PERMITTING
Line25062	Note:
8Dec17 / 18Dec17	

Inv.1,673	1 - MANDOOR - GARAGE TO HOUSE- AS PER PLAN AND GRADE PERMITTING
Line25072	Note:
8Dec17 / 18Dec17	

Inv.1,673	4 - MAIN FLOOR: FOUR (4X) FRAME MAIN FLOOR DOORS AT 96" - ADDED WITH THE ADDITION OF TALLER INTERIOR DOORS
Line25074	Note:
8Dec17 / 18Dec17	

Inv.1,673	1 - UPGRADE TO FREE STANDING TUB - UPG1 ONLY- NOT AVAILABLE ON 41-5 AND 41-6
Line25088	Note:
8Dec17 / 18Dec17	

Inv.1,673	1 - OPTIONAL COFFERED CEILING - FAMILY ROOM (PER ROOM AS PER PLAN)
Line25323	Note:
8Dec17 / 18Dec17	

HVAC

Brampton Encore - 93 - 2 - 38-6 Elev.B SCARLATTI OPT- GFA1

Inv.1,673	1 - KITCHEN: GAS LINE AND 110V WALL RECEPTACLE ON DEDICATED CIRCUIT - FOR GAS FIRED STOVE
Line25083	Note:
8Dec17 / 18Dec17	

INTERIOR TRIM AND DOORS

Inv.1,673	1 - MAIN FLOOR: FOUR (4X) FRAME MAIN FLOOR DOORS AT 96" - ADDED WITH THE ADDITION OF TALLER INTERIOR DOORS
Line25087	Note:
8Dec17 / 18Dec17	

PLUMBING

Inv.1,673	1 - UPGRADE TO FREE STANDING TUB - UPG1 ONLY- NOT AVAILABLE ON 41-5 AND 41-6
Line25077	Note:
8Dec17 / 18Dec17	

WINDOWS - BASEMENT

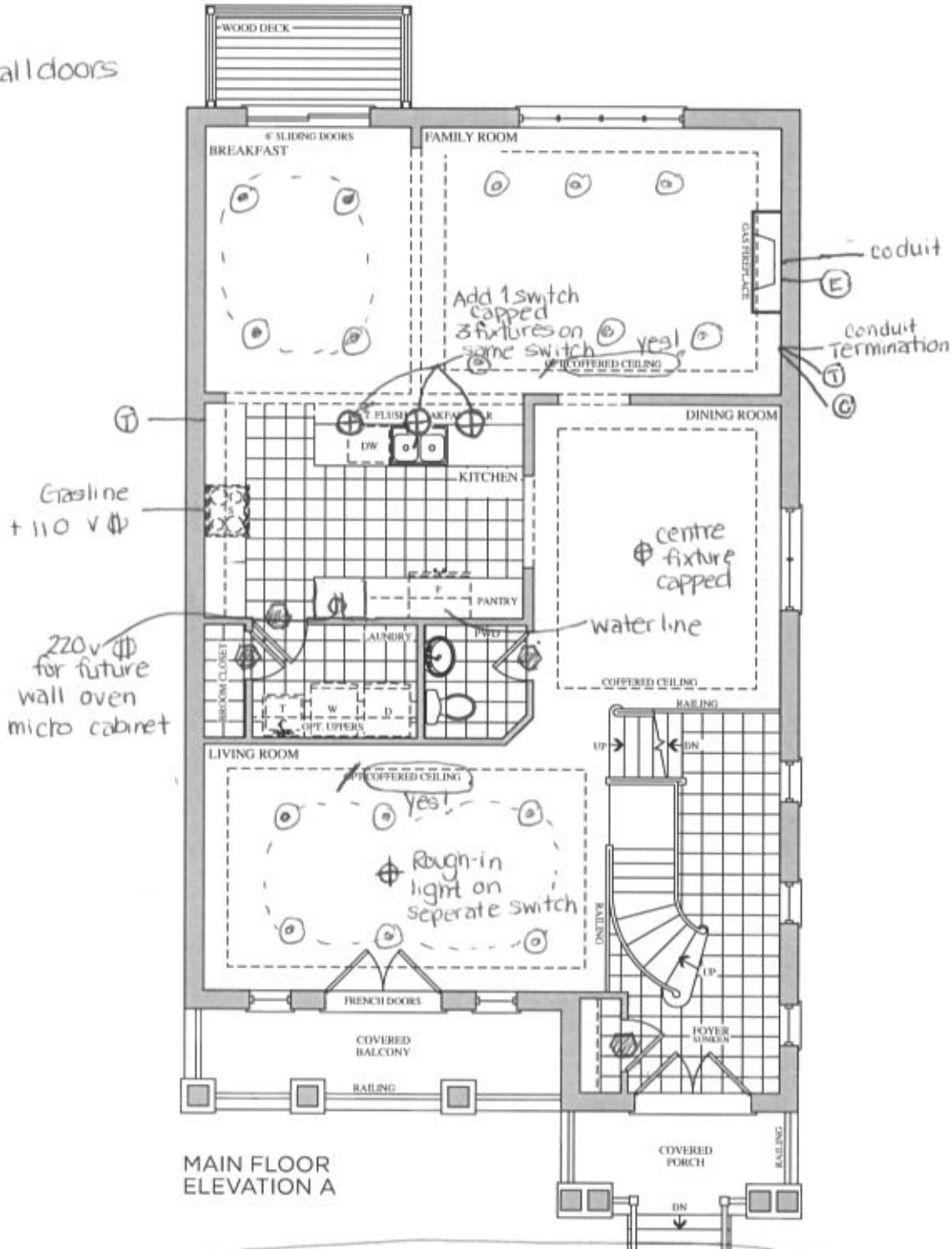
Inv.1,673	3 - BASEMENT WINDOWS - UPGRADE EXISTING BASEMENT WINDOW TO 30 INCH X 16 INCH
Line25078	Note:
8Dec17 / 18Dec17	

WINDOWS AND DOORS

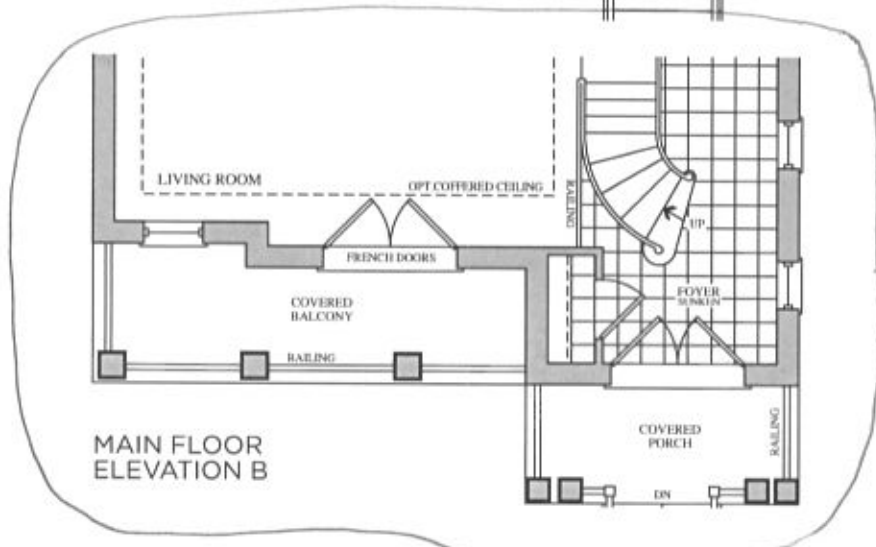
Inv.1,673	1 - SIDE DOOR- HOME TO EXTERIOR- AS PER PLAN AND GRADE PERMITTING
Line25085	Note:
8Dec17 / 18Dec17	

Inv.1,673	1 - MANDOOR - GARAGE TO HOUSE- AS PER PLAN AND GRADE PERMITTING
Line25086	Note:
8Dec17 / 18Dec17	

4 x 96" tall doors



MAIN FLOOR
ELEVATION A

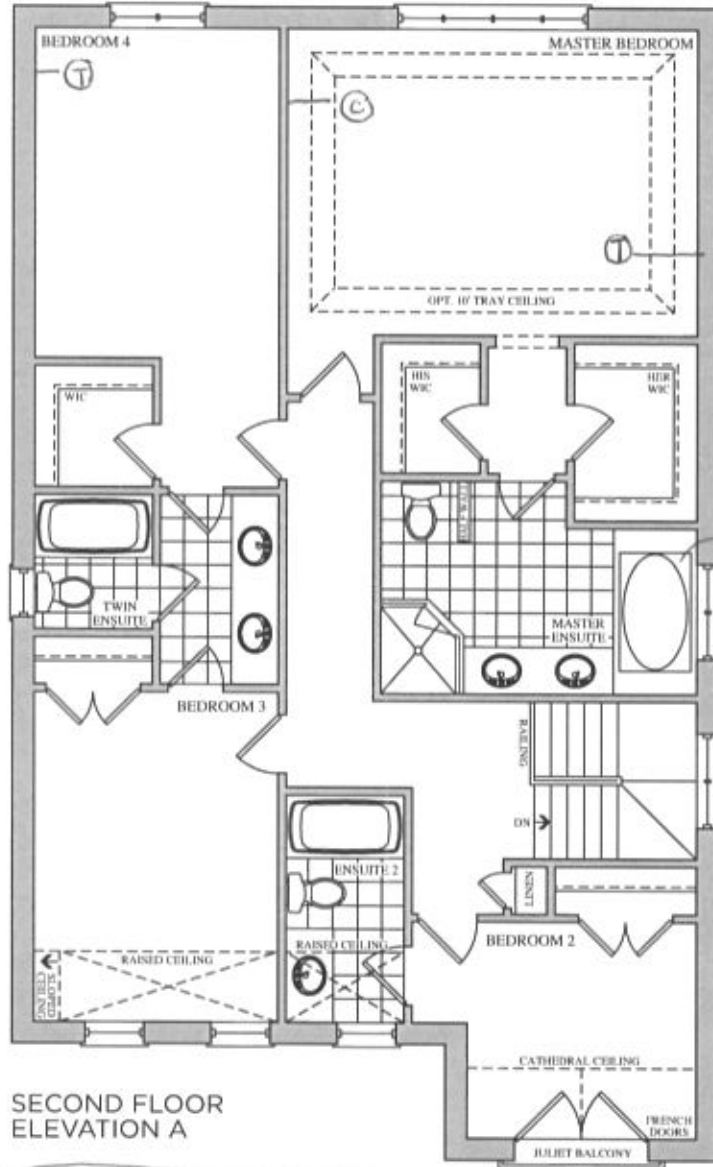


MAIN FLOOR
ELEVATION B

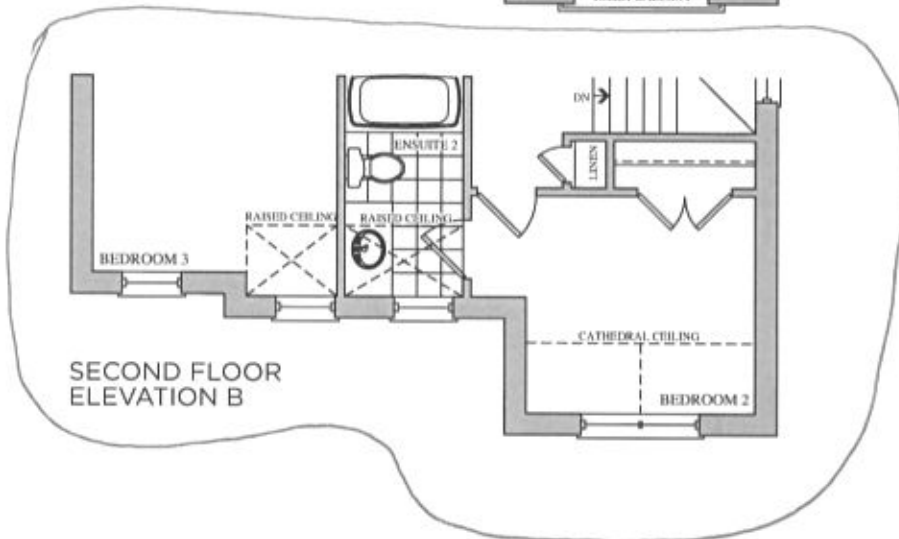
Lot 93
opt Ground Flr

The
Scarlatti
38' SERIES

Elevation A • 3,591 sq.ft. | Elevation B • 3,578 sq.ft.



freestanding



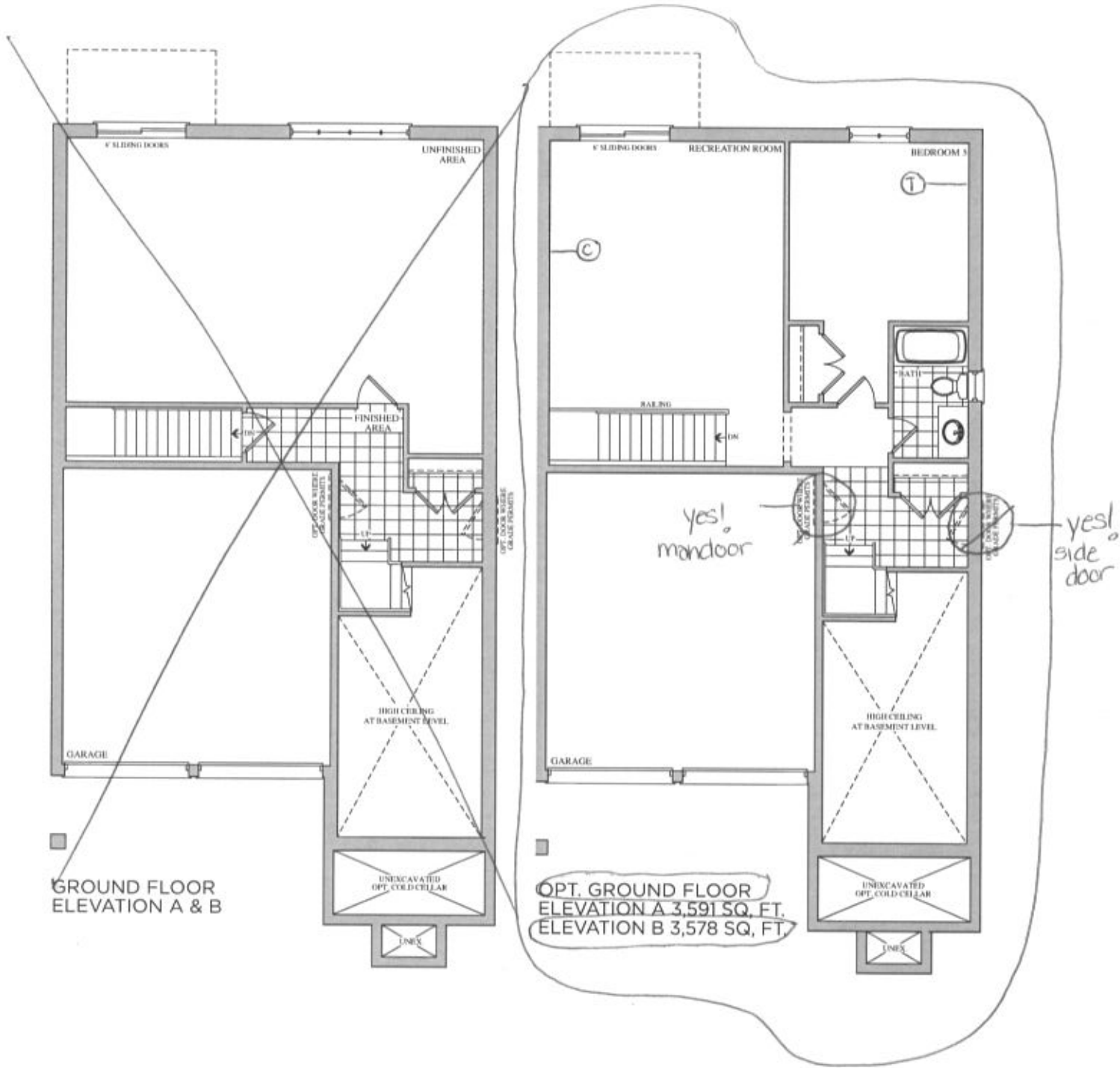
Lot 93 w apt G.7

encore
BRAMPTON

The Scarlatti

38' SERIES

Elevation A • 3,591 sq.ft. | Elevation B • 3,578 sq.ft.



GROUND FLOOR
ELEVATION A & B

OPT. GROUND FLOOR
ELEVATION A 3,591 SQ. FT.
ELEVATION B 3,578 SQ. FT.

Prices, figures, illustrations, sizes, features and finishes are subject to change without notice. E.&O.E. Areas and dimensions are approximate and actual usable floor space may vary from the stated area. Layout may be reverse of the unit purchased. E. & O.E.

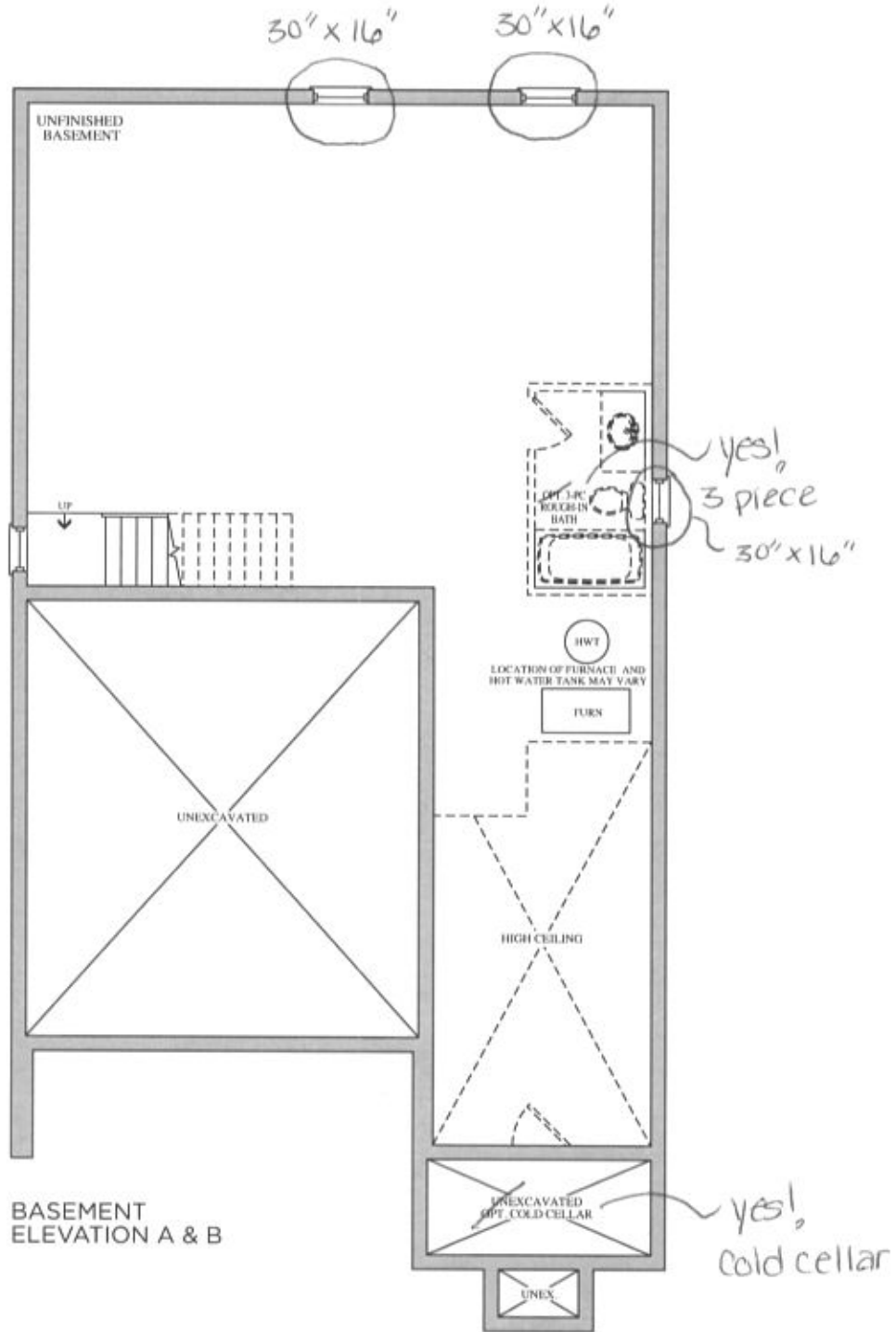
Lot 93 w opt 2.7.

encore
BRAMPTON

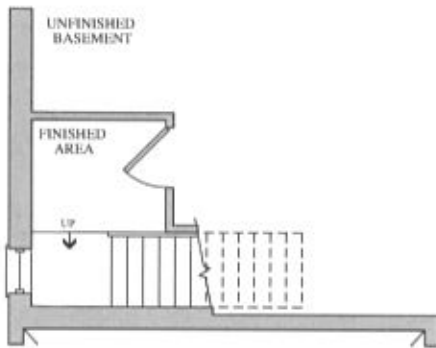
The Scarlatti

38' SERIES

Elevation A • 3,591 sq.ft. | Elevation B • 3,578 sq.ft.



BASEMENT
ELEVATION A & B



OPT. BASEMENT
ELEVATION A & B

Prices, figures, illustrations, sizes, features and finishes are subject to change without notice. E.&O.E. Areas and dimensions are approximate and actual usable floor space may vary from the stated area. Layout may be reverse of the unit purchased. E. & O.E.

GOLDPARK
HOMES