

CONSTRUCTION SUMMARY

Brampton Encore - 11R - 2 - 28-2 Elev.B Siren

CENTRAL VAC AND WIRING

Inv.1,391	1 - ROUGH-IN FOR EXTRA SECURITY KEY PAD
Line21805	Note:
29May17 / 28Sep17	
Inv.1,391	1 - FAMILY ROOM: CONDUIT PIPE- FOR TELEVISION- LOCATE ABOVE FIREPLACE, APPROX. 66" A.F.F., TERMINATING BY CABLE OUTLET. SEE PLAN FOR LOCATION.
Line21809	Note:
29May17 / 28Sep17	

CONCRETE AND DRAIN

Inv.1,391	1 - ROUGH-IN - 3PC BASEMENT ROUGH-IN
Line21817	Note:
29May17 / 28Sep17	

ELECTRICAL

Inv.1,391	1 - FAMILY ROOM: 110V WALL RECEPTACLE ON NORMAL CIRCUIT- LOCATE ABOVE FIREPLACE, APPROX. 66" A.F.F.
Line21807	Note:
29May17 / 28Sep17	
Inv.1,391	1 - KITCHEN: MOVE STANDARD CEILING LIGHT TO APPROX. CENTER ABOVE ISLAND.
Line21814	Note:
29May17 / 28Sep17	
Inv.1,391	1 - KITCHEN: 110V WALL RECEPTACLE ON DEDICATED CIRCUIT - FOR MICROWAVE - MICROWAVE AND CABINETRY CUSTOMIZATION NOT INCLUDED
Line21816	Note:
29May17 / 28Sep17	

Exterior Colours

Inv.1,391	1 - EXTERIOR COLOUR PACKAGE 9
Line24306	Note:
29May17 / 28Sep17	

FRAMING

Inv.1,391	1 - MAIN FLOOR: FRAME MAIN FLOOR DOORS AND ARCHESAT 96" - ADDED WITH THE ADDITION OF TALLER INTERIOR DOORS
Line21810	Note:
29May17 / 28Sep17	
Inv.1,391	1 - KITCHEN: UPGRADE VENTING FOR STOVE TO 8" PIPE EXTERIOR WALL
Line24304	Note:
29May17 / 28Sep17	

GARAGE DOORS

Inv.1,391	1 - GARAGE DOOR OPENER *BELT DRIVEN*- WITH 1 REMOTE- PRICE IS PER DOOR
Line21821	Note:
29May17 / 28Sep17	

HVAC

Inv.1,391	1 - KITCHEN: UPGRADE VENTING FOR STOVE TO 8" PIPE EXTERIOR WALL
Line21815	Note:
29May17 / 28Sep17	

Brampton Encore - 11R - 2 - 28-2 Elev.B Siren

Inv.1,391	1 - HUMIDIFIER: WB3 - 17 (UP TO 3,000 SQ.FT.)
Line21819	Note:
29May17 / 28Sep17	
Inv.1,391	1 - A/C UNIT - LENNOX 2.0 TON A/C UNIT
Line21820	Note:
29May17 / 28Sep17	

INTERIOR TRIM AND DOORS

Inv.1,391	1 - MAIN FLOOR: EXTENDED HEIGHT ARCHWAY (PRICE PER DOORWAY) -96"
Line21811	Note:
29May17 / 28Sep17	
Inv.1,391	3 - MAIN FLOOR: STANDARD DOOR EXTENDED HEIGHT 96" (PRICE PER DOOR)- GROUND FLOOR 2 STOREY MODELS
Line21812	Note:
29May17 / 28Sep17	

MISC.

Inv.1,391	1 - DO NOT INSTALL-SIDE DOOR- HOME TO EXTERIOR- AS PER PLAN- GRADE DOESN'T PERMIT
Line21813	Note:
29May17 / 28Sep17	
Inv.1,391	1 - Purchaser has attended an appointment at the Decor Centre & has DECLINED any additional upgrades and accepts and acknowledges that there will be no further changes/additions/deletions to be made upon signing on May 29 2017.
Line21822	Note:
29May17 / 28Sep17	
Inv.1,391	1 - Purchasers are aware & accepts that ANY changes made to upgrades after signing this Purchasers Extra Form are subject to a minimum administration fee of \$500. PLUS a 10% holdback fee.
Line21823	Note:
29May17 / 28Sep17	
Inv.1,391	1 - BONUS PACKAGE: \$5,000.00 (INCLUDING TAXES) WORTH OF UPGRADES FROM GOLD PARK HOMES DÉCOR CENTRE IS BEING **DEFERRED TO COLOUR APPOINTMENT. PURCHASER HAS A REMAINING AMOUNT OF \$5,000.00 (INCLUDING TAXES) TO BE USED TOWARD THE COLOUR APPOINTMENT.
Line21824	Note:
29May17 / 28Sep17	

PLUMBING

Inv.1,391	1 - HUMIDIFIER: WB3 - 17 (UP TO 3,000 SQ.FT.)
Line24305	Note:
29May17 / 28Sep17	

WINDOWS - BASEMENT

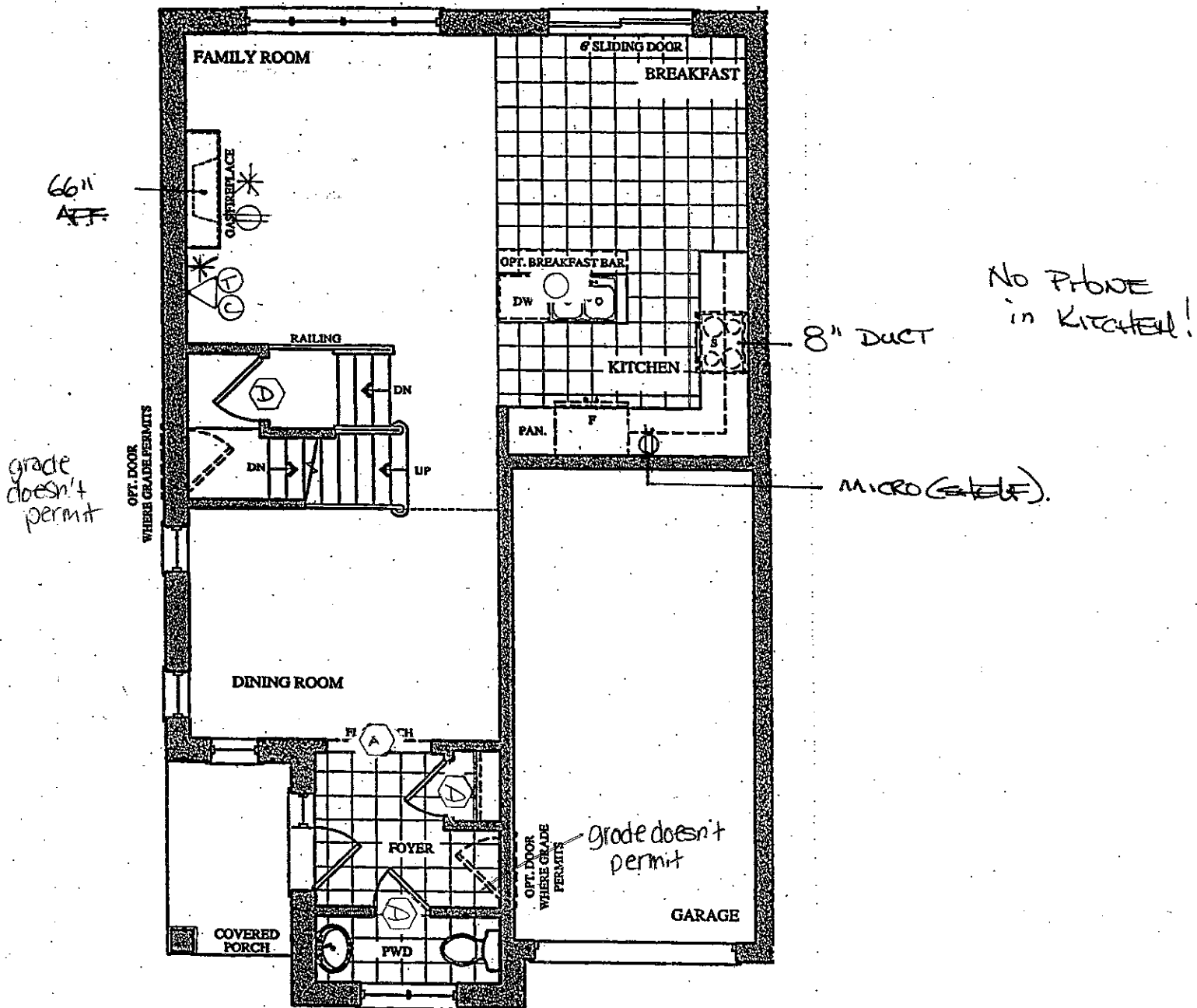
Inv.1,391	3 - BASEMENT WINDOWS - UPGRADE EXISTING BASEMENT WINDOW TO 30 INCH X 24 INCH - MAY REQUIRE INSTALLATION OF WINDOW WELL
Line21818	Note:
29May17 / 28Sep17	

BE2-11R  
MAY 29 2017 *Bill*

# The Siren

## SEMI SERIES

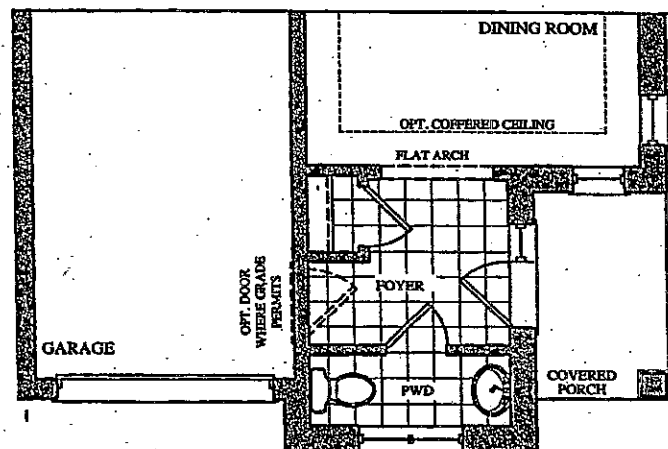
× Elevation A • 1,688 sq.ft.  
→ Elevation B • 1,677 sq.ft.  
× Elevation C • 1,687 sq.ft.



GROUND FLOOR PLAN  
ELEV. 'A' & 'B'

### LEGEND

- STD CEILING LIGHT
- ⊕ ELECTRICAL OUTLET
- △ - 96" ARCH
- ⬢ - 96" DOOR
- \* - CONDUIT
- △① - PHOTO
- △② - CABLE



PART. GROUND FLOOR PLAN  
ELEV. 'C'

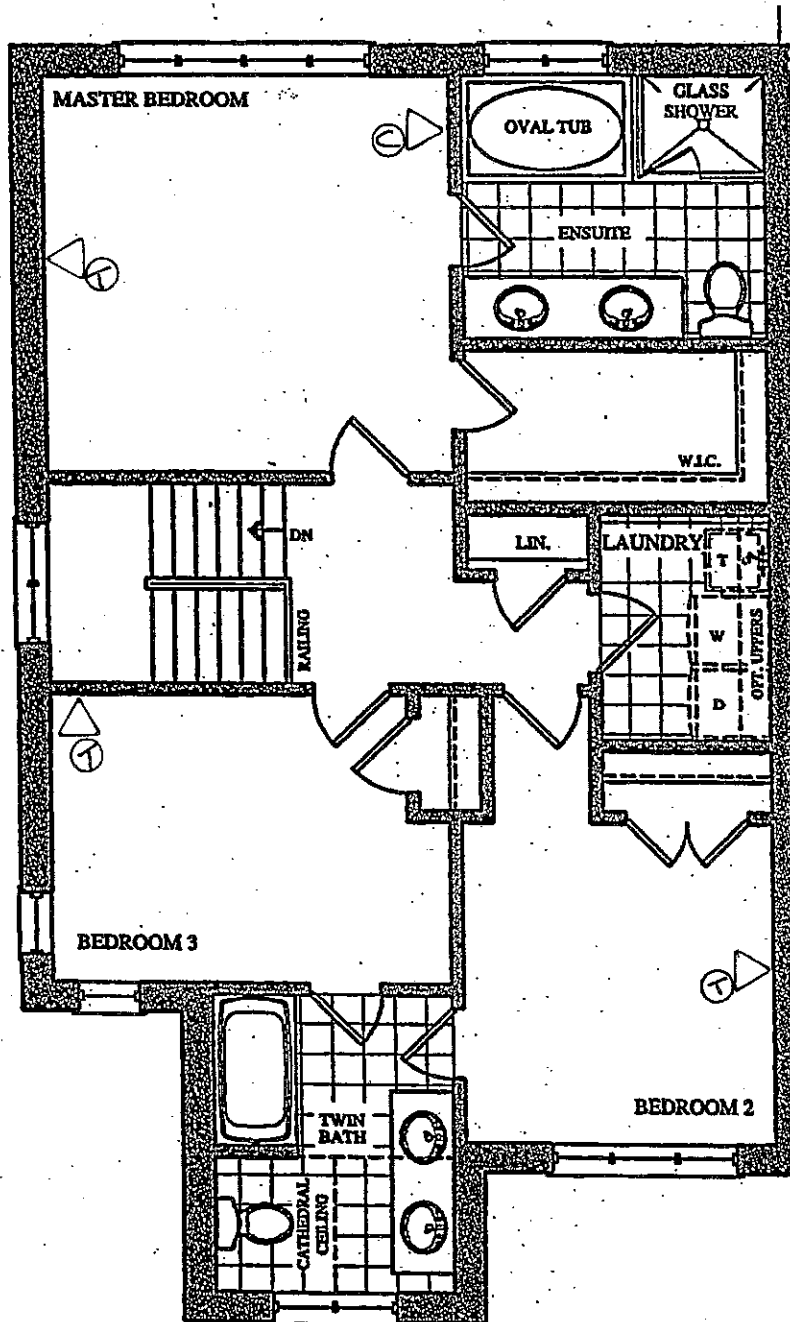
BEZ-11R  
MAY 29 2017

Bill

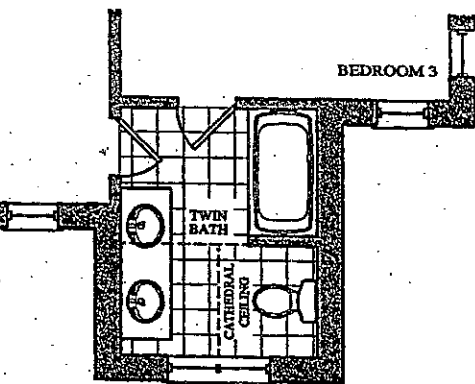
# The Siren

## SEMI SERIES

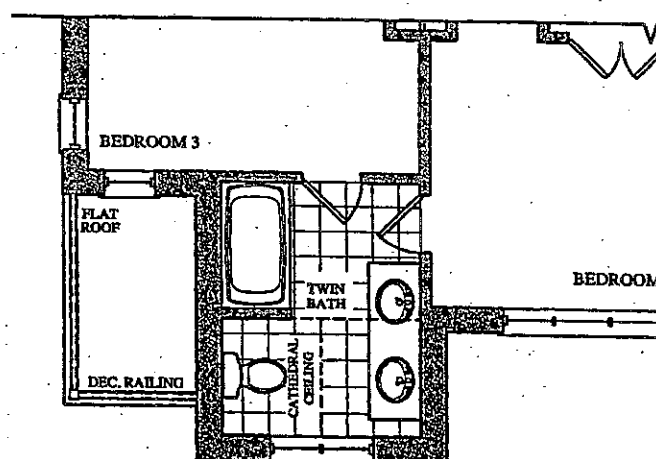
- × Elevation A • 1,688 sq.ft.
- Elevation B • 1,677 sq.ft.
- × Elevation C • 1,687 sq.ft.



SECOND FLOOR PLAN  
ELEV. 'A'



PART. SECOND FLOOR PLAN  
ELEV. 'B'



PART. SECOND FLOOR PLAN  
ELEV. 'C'

# The Siren

## SEMI SERIES

× Elevation A • 1,688 sq.ft.

→ Elevation B • 1,677 sq.ft.

× Elevation C • 1,687 sq.ft.

BEZ-11R  
MAY 29 2017

