

**Brampton Encore - 49R - 2 - 28-6 Elev.D BERLIO OPT - OPT 4**

**ELECTRICAL**

Inv.1,368	1 - KITCHEN: 110V WALL RECEPTACLE ON DEDICATED CIRCUIT - FOR MICROWAVE - MICROWAVE AND CABINETRY ADJUSTMENT NOT INCLUDED
Line21500	Note: SEE PLAN FOR LOCATION
16May17 / 26Sep17	
Inv.1,368	1 - KITCHEN: MOVE STANDARD CEILING LIGHT TO APPROX. CENTER ABOVE ISLAND.
Line21499	Note:
16May17 / 26Sep17	

**Exterior Colours**

Inv.1,368	1 - EXTERIOR COLOUR PACKAGE 7
Line24189	Note:
16May17 / 26Sep17	

**FORMING**

Inv.1,368	1 - SIDE DOOR- HOME TO EXTERIOR- AS PER PLAN AND GRADE PERMITTING
Line21497	Note:
16May17 / 26Sep17	

**FRAMING**

Inv.1,368	1 - FRAME MAIN FLOOR DOORS AND ARCHWAYS AT 96" - ADDED WITH THE ADDITION OF TALLER INTERIOR DOORS
Line21501	Note:
16May17 / 26Sep17	

**INTERIOR TRIM AND DOORS**

Inv.1,368	3 - MAIN FLOOR: EXTENDED HEIGHT ARCHWAY (PRICE PER DOORWAY) -96"
Line21502	Note:
16May17 / 26Sep17	
Inv.1,368	3 - MAIN FLOOR: STANDARD DOOR EXTENDED HEIGHT 96" (PRICE PER DOOR)- GROUND FLOOR 2 STOREY MODELS
Line21503	Note:
16May17 / 26Sep17	
Inv.1,368	1 - FRAME MAIN FLOOR DOORS AND ARCHWAYS AT 96" - ADDED WITH THE ADDITION OF TALLER INTERIOR DOORS
Line24188	Note:
16May17 / 26Sep17	

**MISC.**

Inv.1,368	1 - Purchasers are aware & accepts that ANY changes made to upgrades after signing this Purchasers Extra Form are subject to a minimum administration fee of \$500. PLUS a 10% holdback fee.
Line21505	Note:
16May17 / 26Sep17	
Inv.1,368	1 - Purchaser has attended an appointment at the Decor Centre & has DECLINED any additional upgrades and accepts and acknowledges that there will be no further changes/additions/deletions to be made upon signing on May 16 2017.
Line21504	Note:
16May17 / 26Sep17	

Brampton Encore - 49R - 2 - 28-6 Elev.D BERLIO OPT - OPT 4

Inv.1,368	1 - BONUS PACKAGE: \$5,000.00 (INCLUDING TAXES) WORTH OF UPGRADES FROM GOLD PARK HOMES DÉCOR CENTRE IS BEING APPLIED TOWARD THE STRUCTURAL APPOINTMENT. PURCHASER HAS A REMAINING AMOUNT OF \$00 (INCLUDING TAXES) TO BE USED TOWARD THE COLOUR APPOINTMENT.
Line21506	Note:
16May17 / 26Sep17	

WINDOWS AND DOORS

Inv.1,368	1 - SIDE DOOR- HOME TO EXTERIOR- AS PER PLAN AND GRADE PERMITTING
Line24187	Note:
16May17 / 26Sep17	

NA BEZ-49R.  
MAY 16 2017

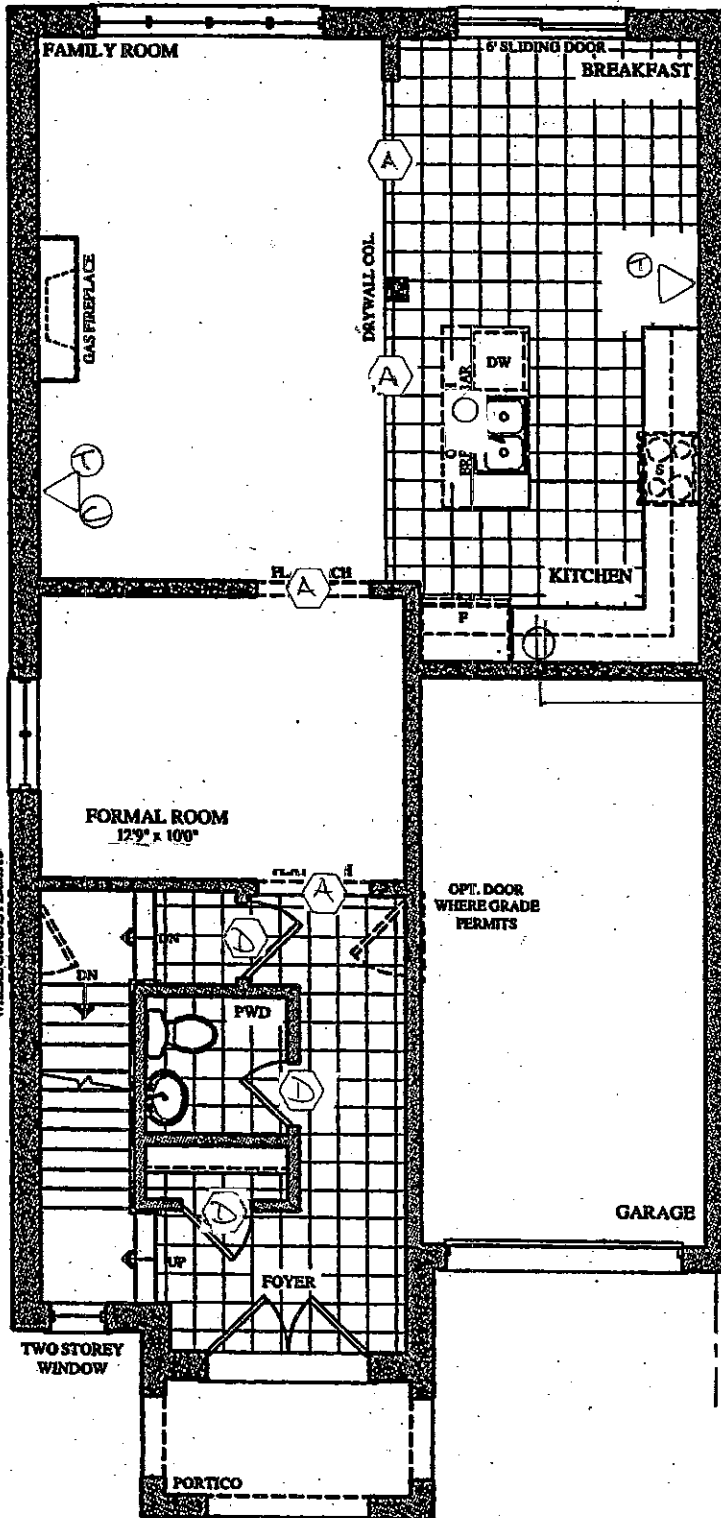
# The Berlio

## SEMI SERIES

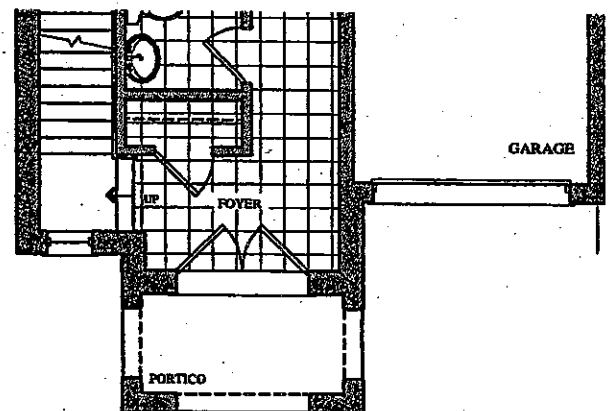
Elevation A • 2,047 sq.ft.  
Elevation B • 2,037 sq.ft.  
Elevation C • 2,037 sq.ft.  
→ Elevation D • 2,047 sq.ft.

### LEGEND

- STD CEILING LIGHT
- ⊕ ELECTRICAL OUTLET
- A 96" ARCH
- D 96" DOOR
- △ PLANE
- ⊕ CABLE



GROUND FLOOR PLAN  
ELEV. 'A' & 'B'

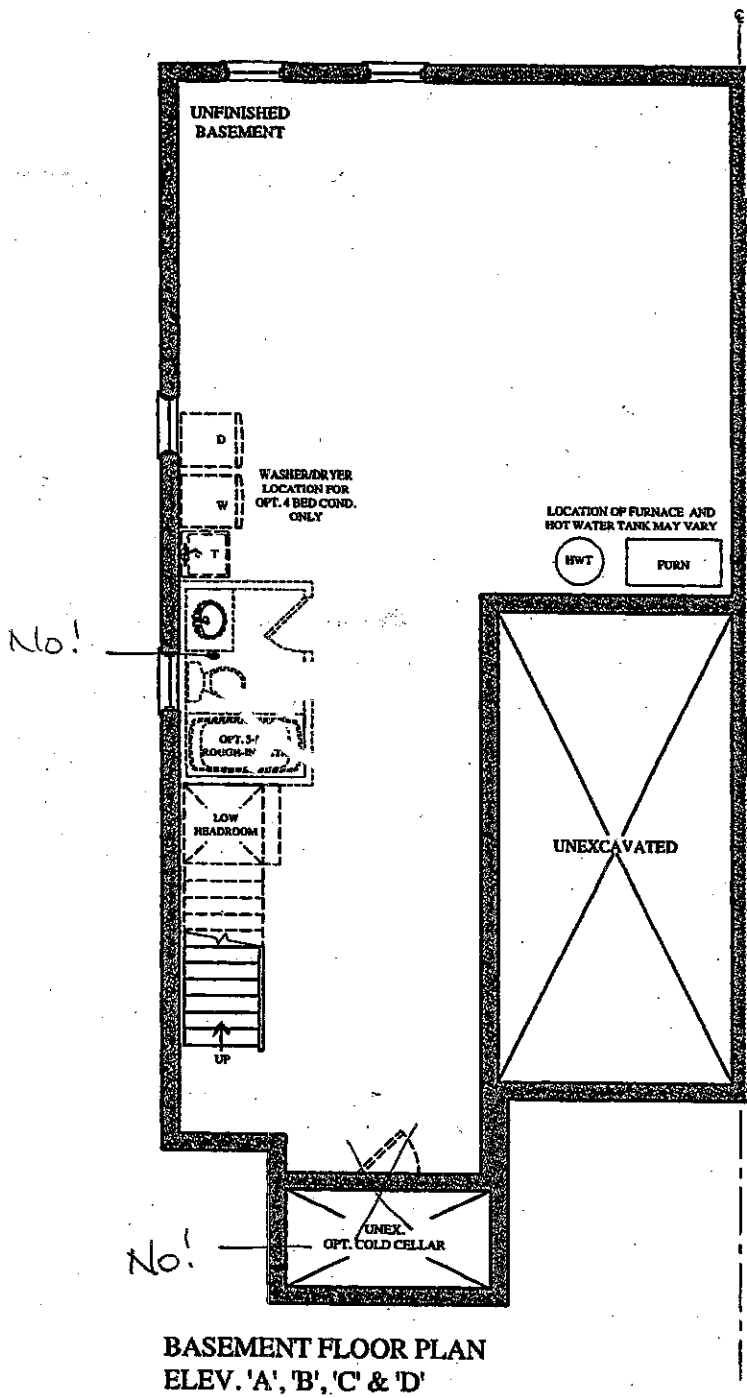


PART. GROUND FLOOR PLAN  
ELEV. 'C' & 'D'

NA BE2-49R.  
MAY 16 2017

The  
Berlio  
SEMI SERIES

Elevation A • 2,047 sq.ft.  
Elevation B • 2,037 sq.ft.  
Elevation C • 2,037 sq.ft.  
Elevation D • 2,047 sq.ft.



Prices, figures, illustrations, sizes, features and finishes are subject to change without notice. Areas and dimensions are approximate and actual usable floor space may vary from the stated area. Layout may be reverse of the unit purchased. E. & O.E.

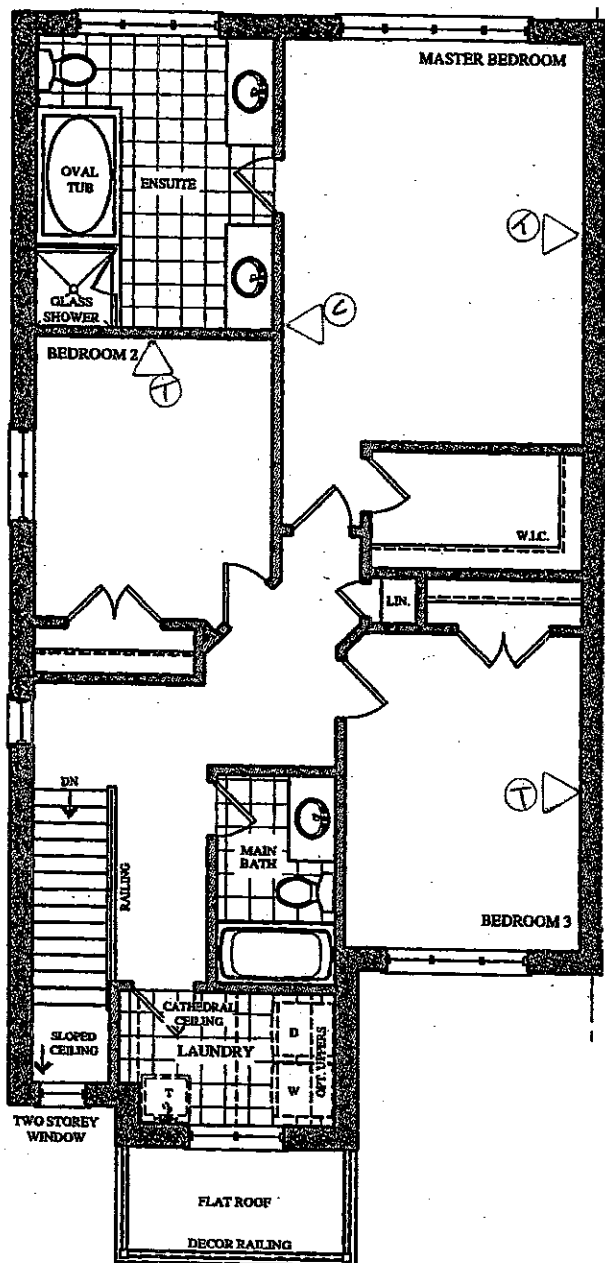
GOLDPARK  
WORTH MORE™

Elevation A • 2,047 sq.ft.

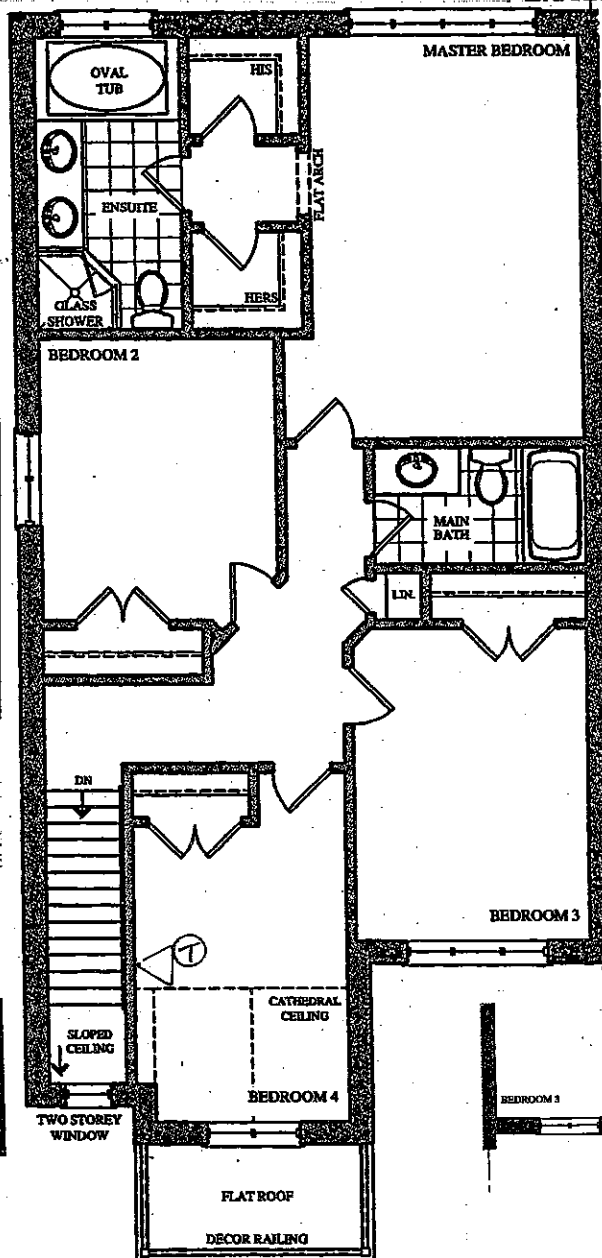
Elevation B • 2,037 sq.ft.

Elevation C • 2,037 sq.ft.

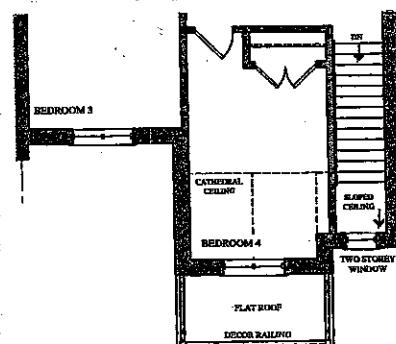
\* Elevation D • 2,047 sq.ft.



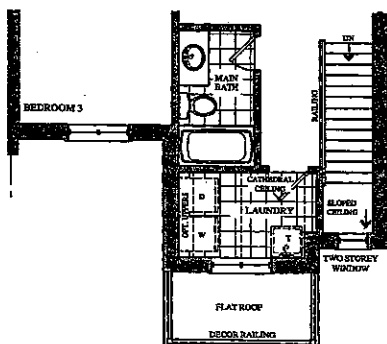
SECOND FLOOR PLAN  
ELEV. 'A' D



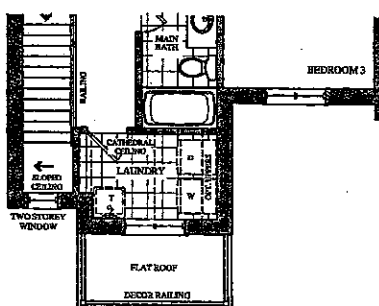
P. E  
OPT. 4 BED SECOND FLOOR PLAN  
ELEV. 'A' D



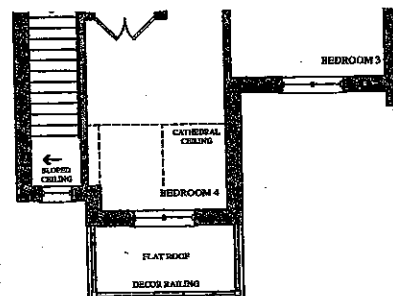
PART. OPT. 4 BED SECOND FLOOR PLAN  
ELEV. 'B'



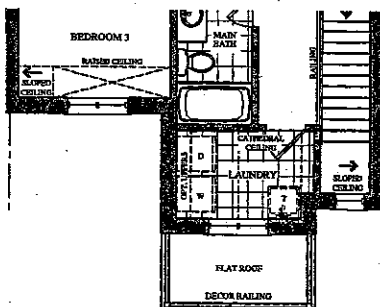
PART. SECOND FLOOR PLAN  
ELEV. 'B'



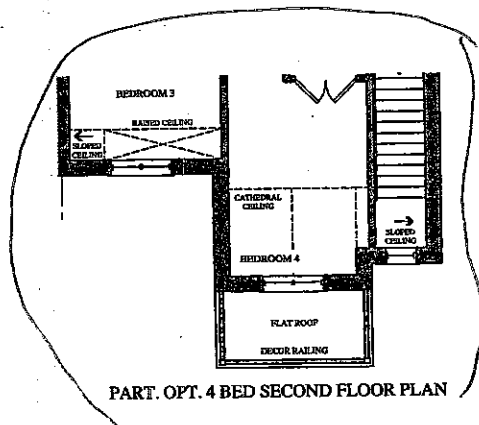
PART. SECOND FLOOR PLAN  
ELEV. 'C'



PART. OPT. 4 BED SECOND FLOOR PLAN  
ELEV. 'C'



PART. SECOND FLOOR PLAN  
ELEV. 'D'



PART. OPT. 4 BED SECOND FLOOR PLAN