

Brampton Encore - 46R - 2 - 28-3 Elev.D BRUCKNER

CENTRAL VAC AND WIRING

Inv.1,386	1 - GREAT ROOM: CONDUIT PIPE- FOR TELEVISION- LOCATE APPROX. 66" A.F.F. ABOVE FIREPLACE, TERMINATING BY CABLE LOCATION - SEE PLAN FOR LOCATION.
Line21729	Note:
25May17 / 22Sep17	
Inv.1,386	1 - GREAT ROOM: CAT 6 WIRING - UPGRADE AN OUTLET TO CAT 6- LOCATE BY CABLE OUTLET, SEE PLAN FOR LOCATION.
Line21730	Note:
25May17 / 22Sep17	
Inv.1,386	1 - GARAGE ENTRANCE: ROUGH-IN FOR EXTRA SECURITY KEY PAD
Line21731	Note:
25May17 / 22Sep17	
Inv.1,386	2 - BEDROOM 2 + BEDROOM 3: ADD CABLE ROUGH-IN - SEE PLAN FOR LOCATION.
Line21741	Note:
25May17 / 22Sep17	

ELECTRICAL

Inv.1,386	1 - GREAT ROOM: 110V WALL RECEPTACLE ON NORMAL CIRCUIT- LOCATE APPROX. 66" A.F.F. ABOVE FIREPLACE FOR FUTURE TV
Line21732	Note:
25May17 / 22Sep17	
Inv.1,386	1 - KITCHEN: MOVE STANDARD CEILING LIGHT TO ABOVE ISLAND, SEE PLAN FOR LOCATION.
Line21733	Note:
25May17 / 22Sep17	
Inv.1,386	1 - KITCHEN: ROUGH - IN CEILING OUTLET ON SAME SWITCH - DOES NOT INCLUDE FIXTURE - LOCATE ABOVE ISLAND, USE SAME SWITCH AS STANDARD LIGHT.
Line21734	Note:
25May17 / 22Sep17	
Inv.1,386	1 - KITCHEN: 110V WALL RECEPTACLE ON DEDICATED CIRCUIT - FOR MICROWAVE - MICROWAVE AND CABINETRY CUSTOMIZATION NOT INCLUDED
Line21735	Note:
25May17 / 22Sep17	
Inv.1,386	1 - KITCHEN: 240V WALL RECEPTICAL ON DEDICATED CIRCUIT- FOR 4 WIRE BUILT-IN WALL OVEN - SEE PLAN FOR LOCATION.
Line21737	Note:
25May17 / 22Sep17	
Inv.1,386	1 - KITCHEN: 110V WALL RECEPTACLE ON NORMAL CIRCUIT - FOR FUTURE WINE FRIDGE IN ISLAND - FRIDGE AND CABINETRY CUSTOMIZATION NOT INCLUDED
Line21738	Note:
25May17 / 22Sep17	
Inv.1,386	1 - KITCHEN: GAS LINE ROUGH - 2ND FLOOR- (2-STOREY MODELS) INCLUDES 110v FOR STOVE
Line24174	Note:
25May17 / 22Sep17	

Exterior Colours

Inv.1,386	1 - EXTERIOR COLOUR PACKAGE #6
Line24175	Note:
25May17 / 22Sep17	

FRAMING

Brampton Encore - 46R - 2 - 28-3 Elev.D BRUCKNER

Inv.1,386	1 - **REQUEST - IF POSSIBLE** - RUN ANY ELECTRICAL ABOVE DOORS/ARCHES AS HIGH AS POSSIBLE - HOMEOWNER MAY INCREASE DOORS/ARCHES TO 96" **AFTER CLOSING**
Line21746	Note:
25May17 / 22Sep17	

GARAGE DOORS

Inv.1,386	1 - GARAGE: DIGITAL ENTRY KEYPAD
Line21742	Note: SEE PLAN FOR LOCATION
25May17 / 22Sep17	

Inv.1,386	1 - GARAGE DOOR OPENER-BELT DRIVE - WITH 1 REMOTE- PRICE IS PER DOOR
Line21743	Note:
25May17 / 22Sep17	

Inv.1,386	1 - GARAGE: EXTRA REMOTE
Line21744	Note:
25May17 / 22Sep17	

HVAC

Inv.1,386	1 - KITCHEN: GAS LINE ROUGH - 2ND FLOOR- (2-STOREY MODELS) INCLUDES 110v FOR STOVE
Line21740	Note:
25May17 / 22Sep17	

MISC.

Inv.1,386	1 - Purchaser has attended an appointment at the Decor Centre & has DECLINED any additional upgrades and accepts and acknowledges that there will be no further changes/additions/deletions to be made upon signing on May 25
Line21747	Note:
25May17 / 22Sep17	

Inv.1,386	1 - Purchasers are aware & accepts that ANY changes made to upgrades after signing this Purchasers Extra Form are subject to a minimum administration fee of \$500. PLUS a 10% holdback fee.
Line21748	Note:
25May17 / 22Sep17	

Inv.1,386	1 - BONUS PACKAGE: \$5,000.00 (INCLUDING TAXES) WORTH OF UPGRADES FROM GOLD PARK HOMES DÉCOR CENTRE IS BEING APPLIED TOWARD THE STRUCTURAL APPOINTMENT. PURCHASER HAS A REMAINING AMOUNT OF \$00 (INCLUDING TAXES) TO BE USED TOWARD THE COLOUR APPOINTMENT.
Line21749	Note:
25May17 / 22Sep17	

PLUMBING

Inv.1,386	1 - KITCHEN: ROUGH-IN - WATERLINE FOR FRIDGE
Line21745	Note:
25May17 / 22Sep17	

BEZ-46R  
MAY 26 2017 (MNT)

# Bruckn

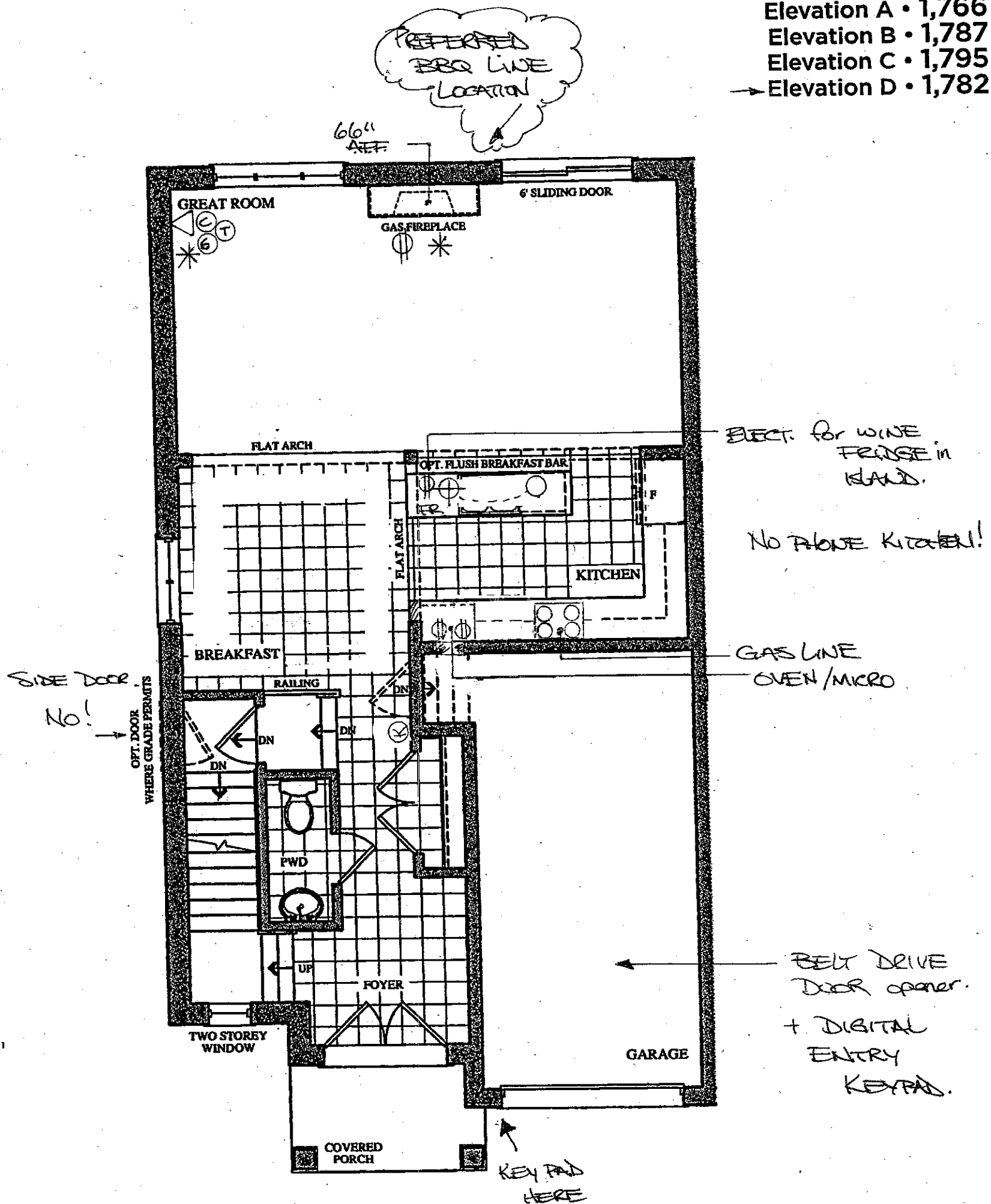
## SEMI SER

Elevation A • 1,766

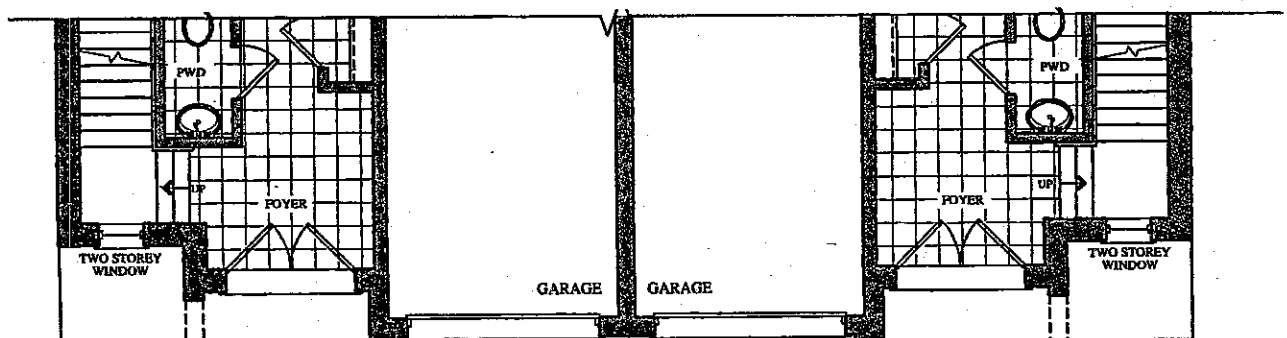
Elevation B • 1,787

Elevation C • 1,795

→ Elevation D • 1,782



GROUND FLOOR PLAN  
ELEV. 'A' & 'B'



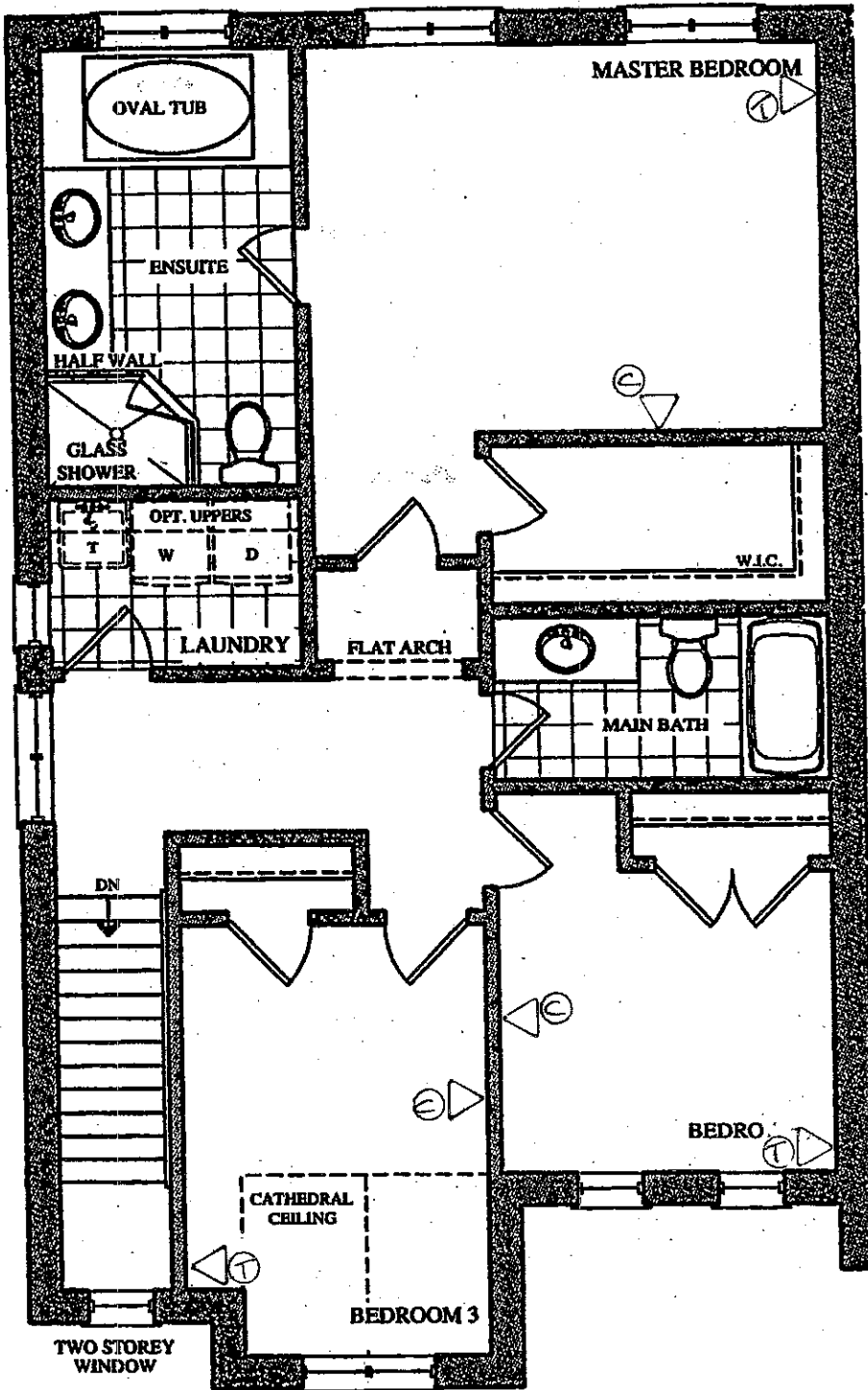
# Brucki

## SEMI SE

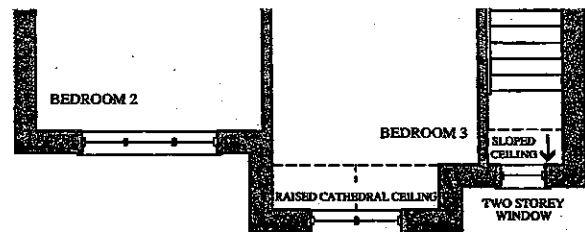
BE2-46R (MMT)  
MAY 25 2017

Elevation A • 1,70  
Elevation B • 1,70  
Elevation C • 1,70  
→ Elevation D • 1,70

### LEGEND.

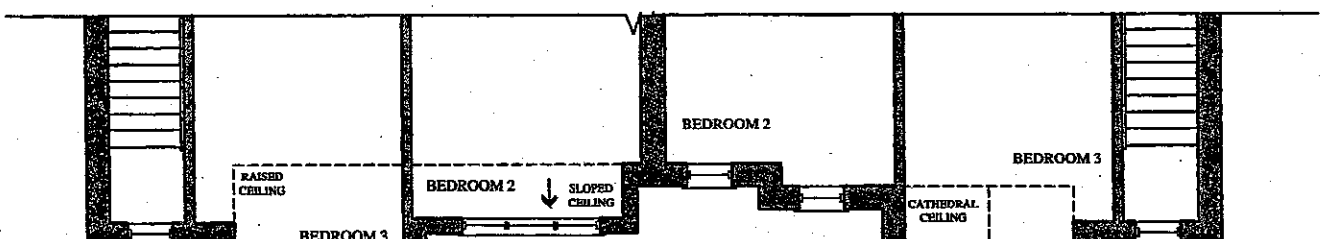


- STD CEILING LIGHT
- ⊕ CATED CEILING ROUGH IN.
- ⊕ ELECTRICAL OUTLET
- \* CONDUIT
- Ⓚ KEYPAD R/IN
- △ T PHONE
- △ C CABLE
- △ 6 CAT 6.



PART. SECOND FLOOR PLAN  
ELEV. 'B'

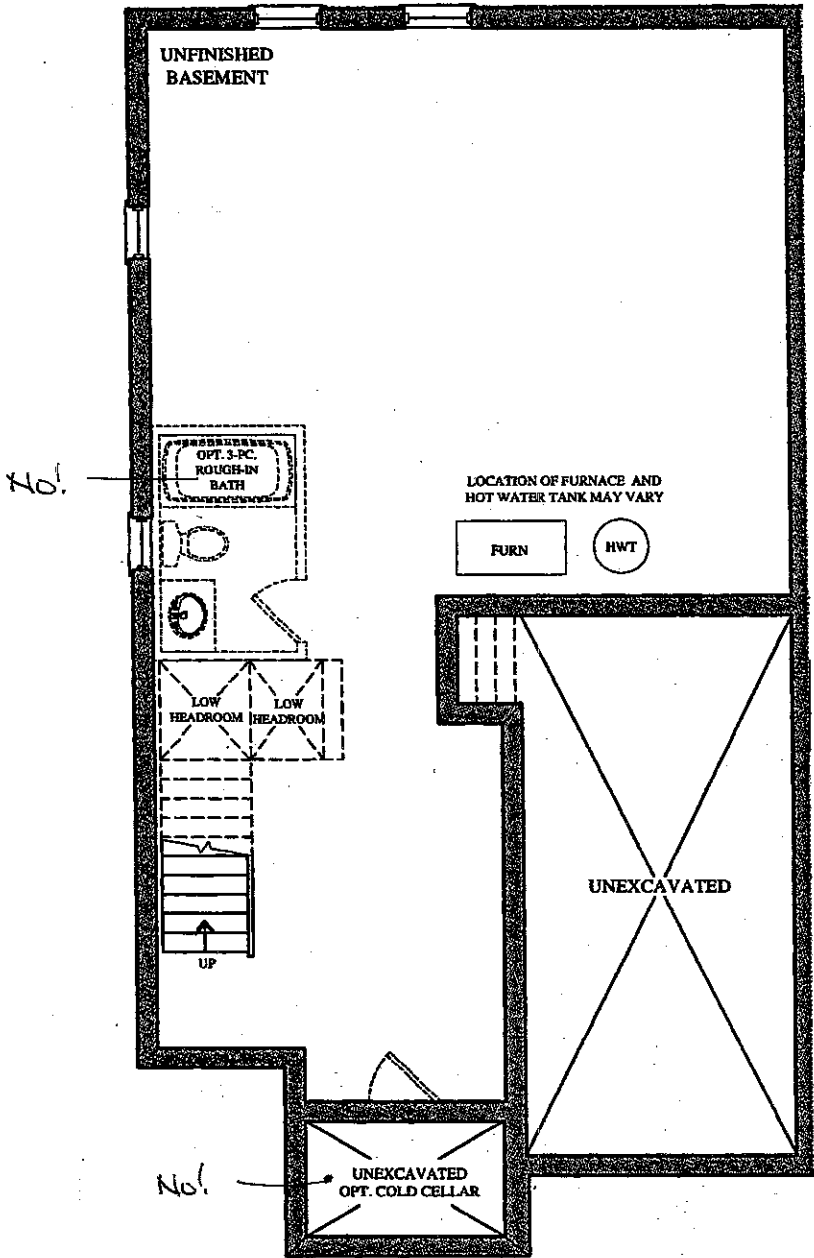
SECOND FLOOR PLAN  
ELEV. 'A'



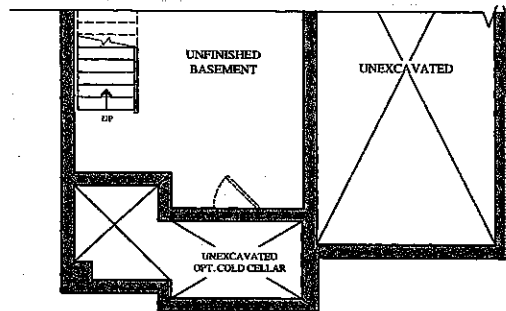
The  
Bruckner  
SEMI SERIES

Elevation A • 1,766 sq.ft.  
Elevation B • 1,787 sq.ft.  
Elevation C • 1,795 sq.ft.  
→ Elevation D • 1,782 sq.ft.

BE2-46R  
MAY 25  
2017



~~BASEMENT FLOOR PLAN  
ELEV. 'A' & 'B'~~



PART. BASEMENT FLOOR PLAN  
ELEV. 'C' & 'D'

Prices, figures, illustrations, sizes, features and finishes are subject to change without notice. Areas and dimensions are approximate and actual usable floor space may vary from the stated area. Layout may be reverse of the unit purchased. E. & O.E.

**KitchenAid®**

FOR THE WAY IT'S MADE.™

## Wall-Mount Canopy Range Hood

BEZ-46R



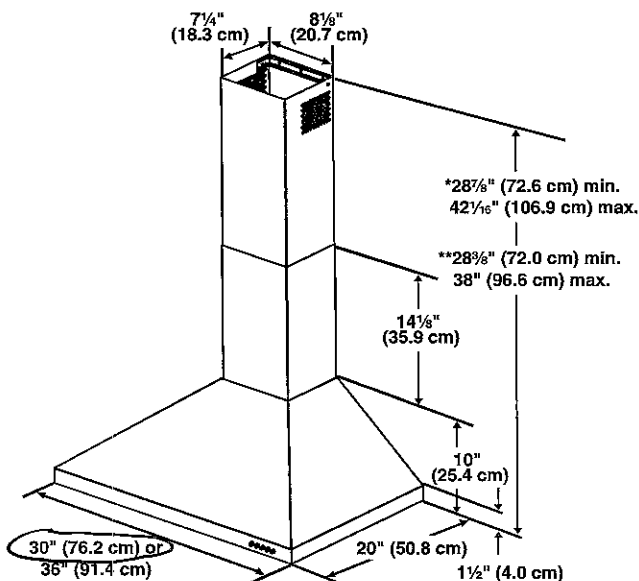
### PRODUCT MODEL NUMBERS

KVWB400D

~~KVWB406B~~

**Electrical:** A 120-volt, 60 Hz, AC only, 15-amp, fused electrical circuit is required.

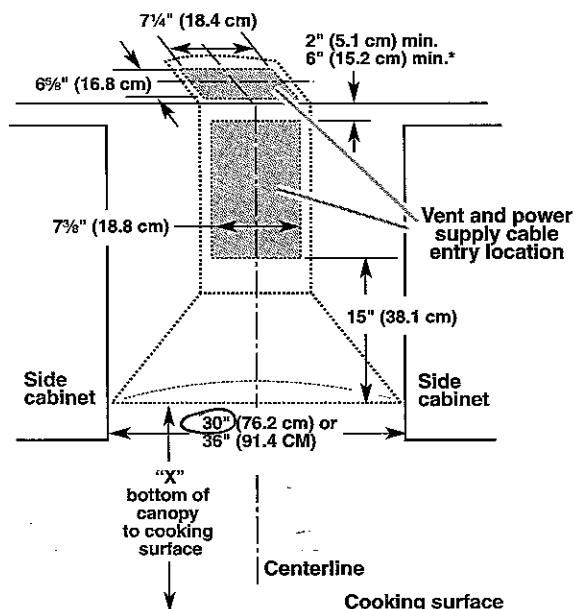
### PRODUCT DIMENSIONS



\*For non-vented (recirculating) installations

\*\*For vented installations

### CABINET DIMENSIONS



\*For non-vented (recirculating) installations

### IMPORTANT:

Minimum distance "X": 24" (61.0 cm) from electric cooking surface.

Minimum distance "X": 27" (68.6 cm) from gas cooking surfaces.

Suggested maximum distance "X": 36" (91.4 cm)

The chimneys can be adjusted for different ceiling heights. See the following chart.

### Vented Installations

	Min. ceiling height	Max. ceiling height
Electric cooking surface	7' 5" (2.26 m)	9' 2" (2.79 m)
Gas cooking surface	7' 8" (2.34 m)	9' 2" (2.79 m)

### Non-vented (recirculating) Installations

	Min. ceiling height	Max. ceiling height
Electric cooking surface	7' 5" (2.26 m)	9' 6" (2.9 m)
Gas cooking surface	7' 8" (2.34 m)	9' 6" (2.9 m)

**\*NOTE:** The range hood chimneys are adjustable and designed to meet varying ceiling or soffit heights depending on the distance "X" between the bottom of the range hood and the cooking surface. For higher ceilings, a Stainless Steel Chimney Extension Kit Part Number W10337357 is available from your dealer or an authorized parts distributor. The chimney extension replaces the upper chimney shipped with the range hood.

## VENTING METHODS

This canopy hood is factory set for venting through the roof or wall.

A 6" (15.2 cm) round vent system is needed for installation (not included). The hood exhaust opening is 6" (15.2 cm) round.

**NOTE:** Flexible vent is not recommended. Flexible vent creates back pressure and air turbulence that greatly reduce performance.

Vent system can terminate either through the roof or wall. To vent through a wall, a 90° elbow is needed.

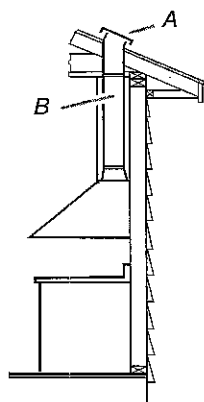
### Rear discharge

A 90° elbow may be installed immediately above the hood.

### For Non-Vented (recirculating) Installations

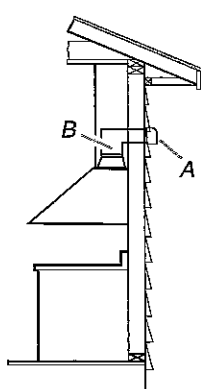
If it is not possible to vent cooking fumes and vapors to the outside, the hood can be used in the non-vented (recirculating) version, using a Recirculation Kit (which includes charcoal filters and a deflector). To order, see the "Assistance or Service" section.

#### Roof Venting



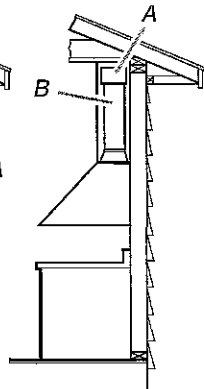
A. Roof cap  
B. 6" (15.2 cm)  
round vent

#### Wall Venting



A. Wall cap  
B. 6" (15.2 cm)  
round vent

#### Non-vented (recirculating)



A. Deflector  
B. 6" (15.2 cm)  
round vent

## Calculating Vent System Length

To calculate the length of the system you need, add the equivalent feet (meters) for each vent piece used in the system.

### Vent Piece

45° elbow 2.5 ft (0.8 m)

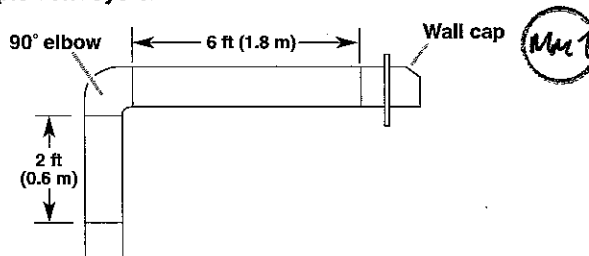


90° elbow 5.0 ft (1.5 m)



Maximum equivalent vent length is 35 ft (10.7 m).

### Example vent system



The following example falls within the maximum recommended vent length of 35 ft (10.7 m).

1 - 90° elbow	= 5.0 ft (1.5 m)
1 - wall cap	= 0.0 ft (0.0 m)
8 ft (2.4 m) straight	= 8.0 ft (2.4 m)
Length of system	= 13.0 ft (3.9 m)

## Bottom Mount Refrigerator

### PRODUCT MODEL NUMBERS

KRFF300E

**Electrical:** A 115 volt, 60 Hz., AC only 15- or 20-amp fused, grounded electrical supply is required. It is recommended that a separate circuit serving only your refrigerator be provided. Use an outlet that cannot be turned off by a switch. Do not use an extension cord.

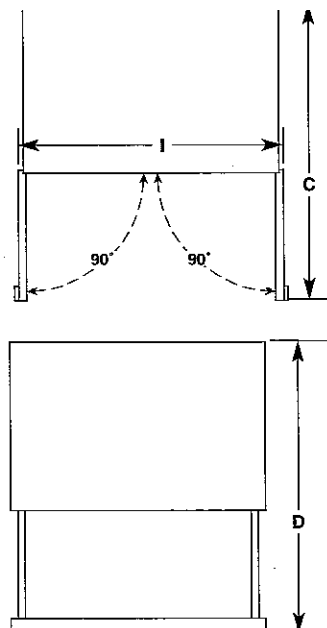
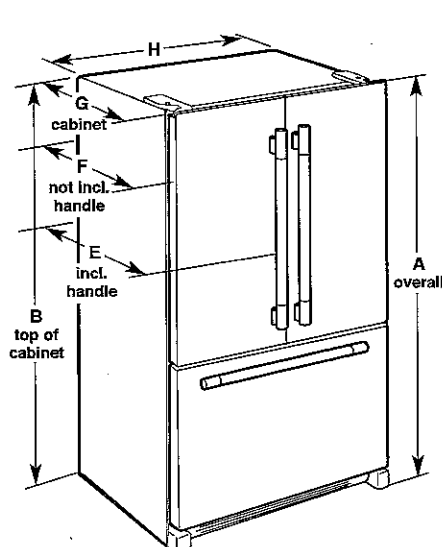
**Water:** A cold water supply with water pressure between 30 and 120 psi (207 and 827 kPa) is required to operate the water dispenser and ice maker. If you have questions about your water pressure, call a licensed, qualified plumber.

#### Reverse Osmosis Water Supply:

**IMPORTANT:** The pressure of the water supply coming out of a reverse osmosis system going to the water inlet valve of the refrigerator needs to be between 30 and 120 psi (207 and 827 kPa).

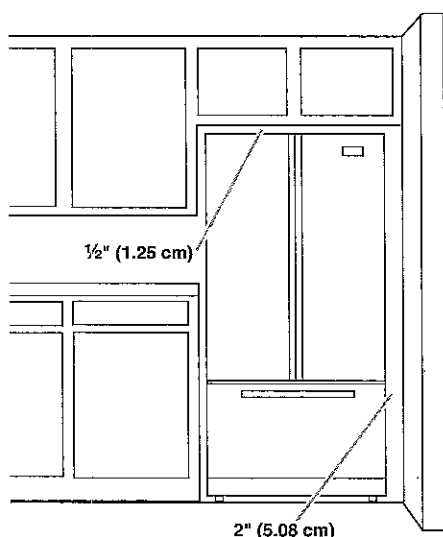
If a reverse osmosis water filtration system is connected to your cold water supply, the water pressure to the reverse osmosis system needs to be a minimum of 40 to 60 psi (276 to 414 kPa).

### PRODUCT DIMENSIONS



Model Size	Height - Overall "A"	Height - Top of Cabinet "B"	Depth - Doors Open 90° "C"	Depth - Drawer Open "D"	Depth - With Handles "E"	Depth - Without Handles "F"	Depth - Cabinet Only "G"	Width - Cabinet "H"	Width - Door Open 90° "I"
19.7	68 3/8" (173.7 cm)	67 1/2" (171.5 cm)	44 1/8" (112.1 cm)	52" (132.1 cm)	34 7/8" (88.6 cm)	32 1/4" (81.9 cm)	28" (71.1 cm)	30 1/8" (76.5 cm)	33 7/8" (86.4 cm)

### LOCATION REQUIREMENTS



To ensure proper ventilation for your refrigerator, allow for a 1/2" (1.25 cm) of space on each side and at the top. Allow for a 1" (2.54 cm) space behind the refrigerator. If your refrigerator has an ice maker, allow extra space at the back for the water line connections. When installing your refrigerator next to a fixed wall, leave a 2" (5.08 cm) minimum space between the refrigerator and wall to allow the door to swing open.

**NOTE:** This refrigerator is intended for use in a location where the temperature ranges from a minimum of 55°F (13°C) to a maximum of 110°F (43°C). The preferred room temperature range for optimum performance, which reduces electricity usage and provides superior cooling, is between 60°F (15°C) and 90°F (32°C). It is recommended that you do not install the refrigerator near a heat source, such as an oven or radiator.



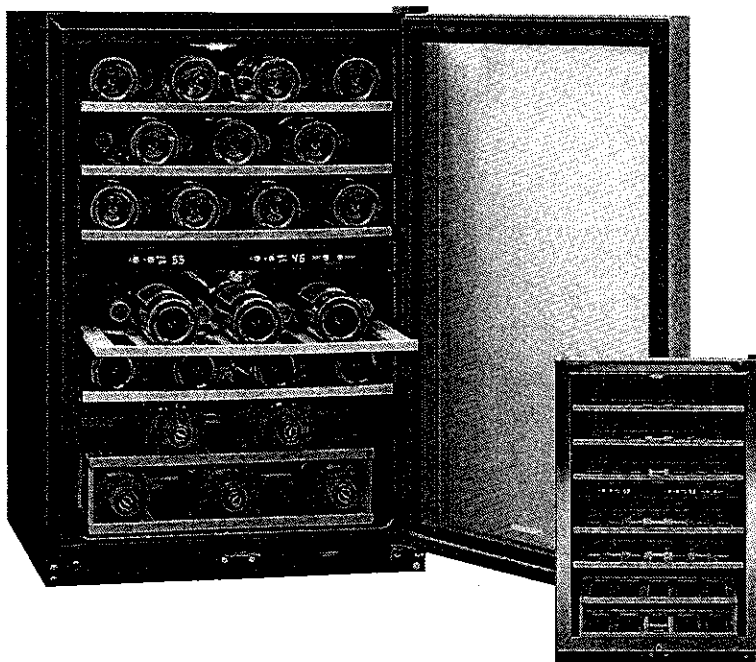
# FRIGIDAIRE



## Wine Cooler

FFWC38C2QS

**Two-Temperature Zone**  
**38-Bottle Capacity**



### Product Dimensions

Height	34"
Width	21-1/2"
Depth (Incl. Door / Incl. Handle)	22-3/8" / 24-1/2"
Depth with Door Opened 90°	43"



### More Easy-To-Use Features

#### Bright Lighting

Our bright lighting makes it easy to see what's inside.

#### Stainless Steel Door

High-quality look to complement your room and wine collection.

#### Natural Stained Wood Shelves

#### Contemporary Handle Design

Convenient access to your wine collection.

#### Ready-Select® Controls

Easily select options with the touch of the a button.

#### Freestanding Installation

#### Frost-Free Performance

#### Static Condenser

#### F° or C° LED Display

#### Power-On/Off Control

#### Tinted Window

#### Adjustable Leveling Legs

Available in:



Stainless  
(S)

## Signature Features

### 38 Wine Bottle Capacity

Ample storage for your wine collection.

### Two Temperature Zones

Store red, white, and sparkling wines separately to ensure each is kept at the appropriate temperature for maximum taste. Store sparkling and whites at 41°—54°F and store reds at 55°—64°F.

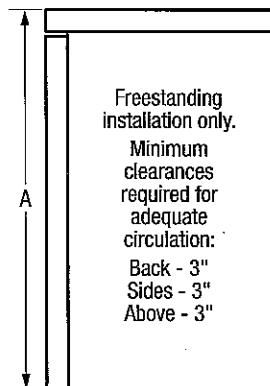
### Precision Electronic Temperature Control with LED Digital Display

Set temperature anywhere between 41°—64°F and the wine cooler will hold it precisely.

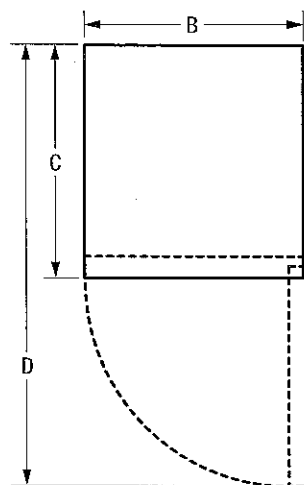
### Reversible Door Swing Option

Door can be installed to open left or right based on your needs.

Features	
Cubic Feet (Cu.Ft.)	4.4
Bottle/Can Capacity	38 Bottles
Exterior	
Door Colour	Stainless Steel
Cabinet Colour	Black
Window Type	Tinted
Door Handle	Top Front-Mounted
Reversible Door	Yes
Adjustable Leveling Legs	Yes
Door Lock	Yes
Interior	
Control Type	Electronic
Display	F° or C° LED
Lighting	Exhibit
Manual Control Lighting	Yes
Frost-Free Performance	Yes
Condenser	Static
High-Temperature Acoustic Alarm	Yes
Illumination System	LED
Power-On/Off Control	Yes
Temperature Zones	2
Temperature Range	Upper 41°F to 54°F Lower 55°F to 64°F
Slide-Out Wine Racks	5
Black Soft-Coat Wireform Racks	
Natural Stained Wood Racks	Yes
Cabinet Liner	Black
Specifications	
Power Supply Connection Location	Lower RH Rear Corner
Voltage Rating	120V/60Hz/15A
Minimum Circuit Required (Amps)	15
Shipping Weight (Approx.)	99 Lbs.
Installation Type	Freestanding



mm1



NOTE: For planning purposes only. Always consult local and national electric and plumbing codes. Refer to Product Installation Guide for detailed installation instructions on the web at [frigidaire.ca](http://frigidaire.ca).



Product Dimensions	
A-Height	34"
B-Width	21-1/2"
C-Depth (Incl. Door/Incl. Handle)	22-3/8"/24-1/2"
D-Depth with Door Open 90°	43"

Accessories information available on the web at [frigidaire.ca](http://frigidaire.ca)

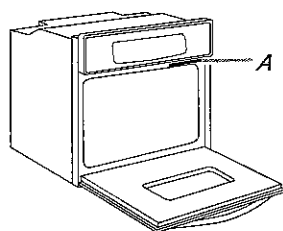
# 27" (68.6 CM) AND 30" (76.2 CM) ELECTRIC SINGLE AND DOUBLE BUILT-IN OVEN

## PRODUCT MODEL NUMBERS

KODE300E	KODT100E	KOST100E
KODE307E	KODT107E	KOST107E
KODE500E	<b>KOSE500E</b>	KEBS109E
KODE507E	KOSE507E	KEBS209E
		KEBS207E

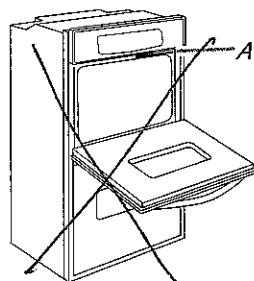
**Electrical:** To properly install your oven, you must determine the type of electrical connection you will be using and follow the instructions provided for it here.

- Oven must be connected to the proper electrical voltage and frequency as specified on the model/serial number rating plate. The model/serial number rating plate is located under the control panel on single ovens and under the control panel on the upper oven cavity on double ovens. See the following illustrations.



**Single Oven**

A. Model/serial number plate



**Double Oven**

A. Model/serial number plate

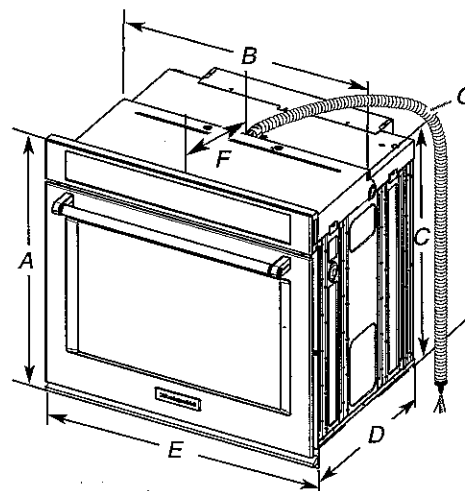
- Models rated from 7.3 to 9.6 kW at 240 volts (5.4 to 7.4 kW at 208 volts) require a separate 40-amp circuit. Models rated at 4.8 kW and below at 240 volts (3.6 kW and below at 208 volts) require a separate 20-amp circuit.
- A circuit breaker is recommended.
- Connect directly to the circuit breaker box (or fused disconnect) through flexible, armored or nonmetallic sheathed, copper cable (with grounding wire). See "Make Electrical Connection" section.
- Flexible conduit from the oven should be connected directly to the junction box.
- Fuse both sides of the line.
- Do not cut the conduit. The length of conduit provided is for serviceability of the oven.
- A UL listed or CSA approved conduit connector must be provided.
- If the house has aluminum wiring, follow the procedure below:
  - Connect a section of solid copper wire to the ends of the flexible conduit leads.
  - Connect the aluminum wiring to the added section of copper wire using special connectors and/or tools designed and UL listed for joining copper to aluminum.

Follow the electrical connector manufacturer's recommended procedure. Aluminum/copper connection must conform with local codes and industry accepted wiring practices.

For power requirements for models KOST107E, KOST100E, KOSE507E, KOSE500E, KODE307E, KODE300E, KODE507E, KODE500E, KODT100E and KODT107E, refer to the following table.

Voltage	Single Thermal	Single Convect	Double Thermal	Double Convect	Double Convect/Thermal
240 VAC	4100 W	4100 W	8163 W	8300 W	8300 W
208 VAC	3100 W	3100 W	6300 W	6300 W	6300 W
240 VAC	17.2 A	17.2 A	34.2 A	34.2 A	34.2 A
208 VAC	15.0 A	15.0 A	29.9 A	29.9 A	29.9 A

## PRODUCT DIMENSIONS

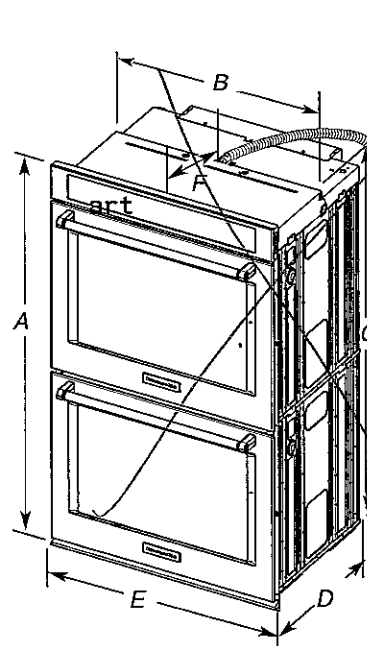


### 27" (68.6 cm) models

- A. 28 3/4" (72.8 cm) max. overall height
- B. 25 7/16" (64.6 cm) max. recessed width
- C. 26 3/4" (67.9 cm) recessed height
- D. 23 1/4" (59.1 cm) max. recessed depth
- E. 27" (68.6 cm) overall width
- F. 12" (30.5 cm) from back of control panel to start of strain relief
- G. 48" (121.9 cm) flexible conduit length

### 30" (76.2 cm) models

- A. 28 3/4" (72.8 cm) max. overall height
- B. 28 1/2" (72.4 cm) max. recessed width
- C. 26 3/4" (67.9 cm) recessed height
- D. 23 1/4" (59.1 cm) max. recessed depth
- E. 30" (76.2 cm) overall width
- F. 12" (30.5 cm) from back of control panel to start of strain relief
- G. 48" (121.9 cm) flexible conduit length



### 27" (68.6 cm) models

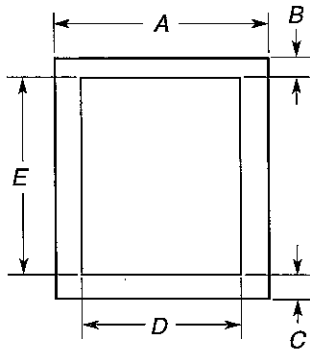
- A. 51 1/16" (130.0 cm) max. overall height
- B. 25 7/16" (64.6 cm) max. recessed width
- C. 48 13/16" (124.0 cm) recessed height
- D. 23 1/4" (59.1 cm) max. recessed depth
- E. 27" (68.6 cm) overall width
- F. 12" (30.5 cm) from back of control panel to start of strain relief
- G. 66" (167.6 cm) flexible conduit length

### 30" (76.2 cm) models

- A. 51 1/16" (130.0 cm) max. overall height
- B. 28 1/2" (72.4 cm) max. recessed width
- C. 48 13/16" (124.0 cm) recessed height
- D. 23 1/4" (59.1 cm) max. recessed depth
- E. 30" (76.2 cm) overall width
- F. 12" (30.5 cm) from back of control panel to start of strain relief
- G. 66" (167.6 cm) flexible conduit length

## CABINET DIMENSIONS - SINGLE OVENS

### Single Oven Undercounter (without cooktop installed above)



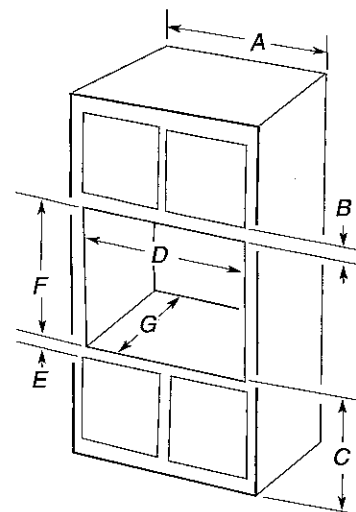
#### 27" (68.6 cm) models

- A. 27" (68.6 cm) min. cabinet width
- B. 1½" (3.8 cm) min. top of cutout to underside of countertop
- C. 5¼" (13.3 cm) bottom of cutout to floor
- D. 25½" (64.8 cm) cutout width
- E. 28" (71.2 cm) min. cutout height

#### 30" (76.2 cm) models

- A. 30" (76.2 cm) min. cabinet width
- B. 1½" (3.8 cm) min. top of cutout to underside of countertop
- C. 5¼" (13.3 cm) bottom of cutout to floor
- D. 28½" (72.4 cm) cutout width
- E. 28" (71.2 cm) min. cutout height

### Single Ovens Installed in Cabinet



#### 27" (68.6 cm) models

- A. 27" (68.6 cm) min. cabinet width
- B. 1" (2.5 cm) top of cutout to bottom of upper cabinet door
- C. 32" (81.3 cm) bottom of cutout to floor
- D. 25½" (64.8 cm) cutout width
- E. 1½" (3.8 cm) min. bottom of cutout to top of cabinet door
- F. 28" (71.2 cm)\* recommended cutout height
- G. 24" (60.7 cm) cutout depth

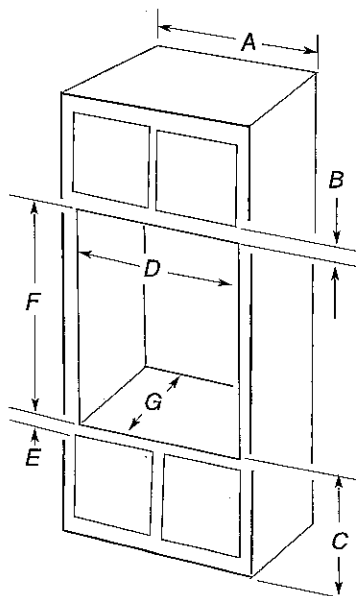
#### 30" (76.2 cm) models

- A. 30" (76.2 cm) min. cabinet width
- B. 1" (2.5 cm) top of cutout to bottom of upper cabinet door
- C. 32" (81.3 cm) bottom of cutout to floor
- D. 28½" (72.4 cm) cutout width
- E. 1½" (3.8 cm) min. bottom of cutout to top of cabinet door
- F. 28" (71.2 cm)\* recommended cutout height
- G. 24" (60.7 cm) cutout depth

**\*NOTE:** The cutout height can be between 26½" (68.4 cm) and 29⅞" (74.8 cm) for single ovens.

## CABINET DIMENSIONS - SINGLE OVENS

### Double Ovens Installed in Cabinet



#### 27" (68.6 cm) models

- A. 27" (68.6 cm) min. cabinet width
- B. 1" (2.5 cm) top of cutout to bottom of upper cabinet door
- C. 14¾" (37.5 cm) bottom of cutout to floor is recommended. 4"-14¾" (10.2-37.5 cm) bottom of cutout to floor is acceptable.
- D. 25½" (64.8 cm) cutout width
- E. 1½" (3.8 cm) min. bottom of cutout to top of cabinet door
- F. 50¼" (127.6 cm)\* recommended cutout height
- G. 24" (60.7 cm) cutout depth

#### 30" (76.2 cm) models

- A. 30" (76.2 cm) min. cabinet width
- B. 1" (2.5 cm) top of cutout to bottom of upper cabinet door
- C. 14¾" (37.5 cm) bottom of cutout to floor is recommended. 4"-14¾" (10.2-37.5 cm) bottom of cutout to floor is acceptable.
- D. 28½" (72.4 cm) cutout width
- E. 1½" (3.8 cm) min. bottom of cutout to top of cabinet door
- F. 50¼" (127.6 cm)\* recommended cutout height
- G. 24" (60.7 cm) cutout depth

**\*NOTE:** The cutout height can be between 48⅞" (124.1 cm) and 52⅞" (132.6 cm) for double ovens.

# KitchenAid® 27" (68.6 cm) and 30" (76.2 cm) Electric Built-In Convection Microwave Oven



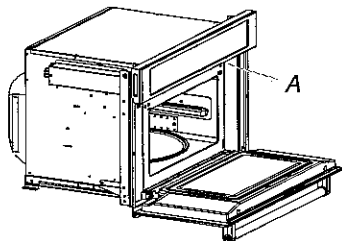
## PRODUCT MODEL NUMBERS

KMBP100E

KMBP107E

## ELECTRICAL CONNECTION

- Microwave oven must be connected to the proper electrical voltage and frequency as specified on the model/serial number rating plate. The model/serial/rating plate is located underneath the control panel, along the oven vent.

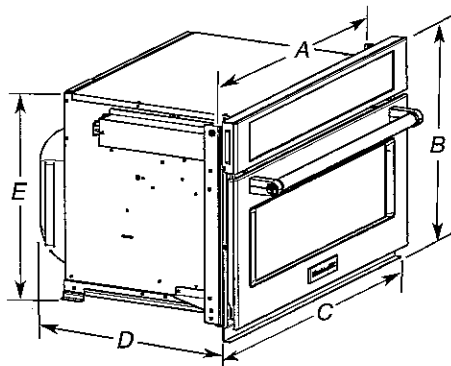


A. Model/serial/rating plate

- The microwave oven rated 120/240 volt, 20-amp, has 4 wires (L1, L2, N and G) in the flex conduit and should be connected to a 20-amp maximum rated circuit, overcurrent protected on both the L1 and L2 circuits.
- A time-delay fuse or circuit breaker is recommended.

## PRODUCT DIMENSIONS

### 27" (68.6 cm) and 30" (76.2 cm) Microwave Ovens



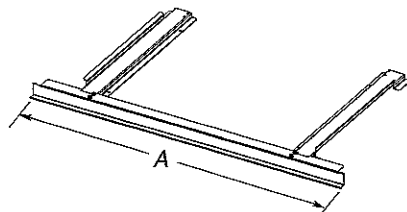
#### 27" (68.6 cm) models

- A. 25 $\frac{3}{4}$ " (64.5 cm)
- B. 18 $\frac{5}{8}$ " (47.3 cm) overall height
- C. 26 $\frac{3}{4}$ " (67.9 cm) overall width
- D. 21 $\frac{1}{2}$ " (54.6 cm)
- E. 17 $\frac{1}{8}$ " (44.1 cm)

#### 30" (76.2 cm) models

- A. 28 $\frac{3}{8}$ " (72.1 cm)
- B. 18 $\frac{5}{8}$ " (47.3 cm) overall height
- C. 29 $\frac{3}{4}$ " (75.6 cm) overall width
- D. 21 $\frac{1}{2}$ " (54.6 cm)
- E. 17 $\frac{1}{8}$ " (44.1 cm)

### 27" (68.6 cm) and 30" (76.2 cm) Microwave Oven Spacer Kit



#### 27" (68.6 cm) models

- A. 26 $\frac{3}{4}$ " (67.9 cm) overall width

#### 30" (76.2 cm) models

- A. 29 $\frac{3}{4}$ " (75.6 cm) overall width

**NOTE:** The microwave oven spacer kit will allow the microwave oven to be installed in a 17 $\frac{1}{8}$ "-17 $\frac{3}{4}$ " (44.1-45.1 cm) maximum cutout height.

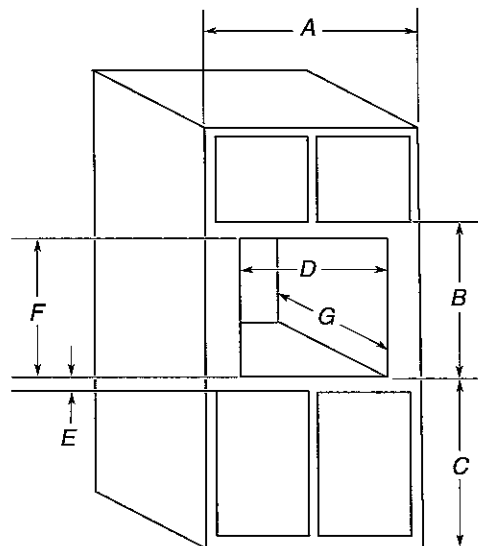
A microwave oven spacer kit is available from your dealer that will allow the microwave oven to be installed in a 19"-19 $\frac{1}{16}$ " (48.3-50.2 cm) maximum cutout height. Match the oven size to the following kits:

- 27" (68.6 cm) Stainless Steel - Model W10469901
- 30" (76.2 cm) Stainless Steel - Model W10469903

To order, see the "Assistance or Service" section of the Use and Care Guide.

## CABINET DIMENSIONS

### 27" (68.6 cm) and 30" (76.2 cm) Microwave Ovens



#### 27" (68.6 cm) models

- A. 27" (68.6 cm) min. cabinet width
- B. 18 $\frac{5}{8}$ " (47.3 cm) from bottom of cutout to bottom of upper cabinet door
- C. 40" (101.6 cm) bottom of cutout to floor (recommended)
- D. 25 $\frac{1}{2}$ " (64.8 cm) cutout width
- E. 1 $\frac{1}{2}$ " (3.8 cm) min. bottom of cutout to top of cabinet door
- F. 17 $\frac{1}{8}$ " (44.7 cm) recommended cutout height (will fit cutout height from 17 $\frac{1}{8}$ " [44.1 cm] to 17 $\frac{3}{4}$ " [45.1 cm])
- G. 21 $\frac{1}{8}$ " (55.5 cm) min. cutout depth

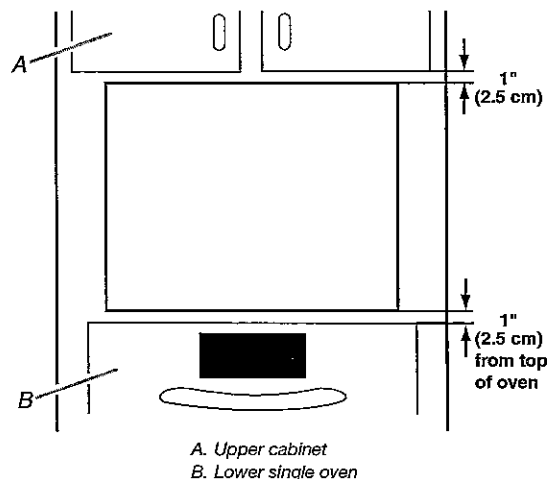
#### 30" (76.2 cm) models

- A. 30" (76.2 cm) min. cabinet width
- B. 18 $\frac{5}{8}$ " (47.3 cm) from bottom of cutout to bottom of upper cabinet door
- C. 40" (101.6 cm) bottom of cutout to floor (recommended)
- D. 28 $\frac{1}{2}$ " (72.4 cm) cutout width
- E. 1 $\frac{1}{2}$ " (3.8 cm) min. bottom of cutout to top of cabinet door
- F. 17 $\frac{1}{8}$ " (44.7 cm) recommended cutout height (will fit cutout height from 17 $\frac{1}{8}$ " [44.1 cm] to 17 $\frac{3}{4}$ " [45.1 cm])
- G. 21 $\frac{1}{8}$ " (55.5 cm) min. cutout depth

## MINIMUM INSTALLATION CLEARANCES

For proper installation, the following minimum clearances must exist above and below the cabinet opening.

### Installation Above Single Built-In Oven



A. Upper cabinet  
B. Lower single oven

Approved models: KMBP100E and KMBP107E.

# 30" (76.2 CM) AND 36" (91.4 CM) GAS BUILT-IN COOKTOP



## PRODUCT MODEL NUMBERS

KCGS350E	KCGS950E	MGC9530D	WCG75US0D
KCGS356E	KCGS956E	MGC9536D	WCG97US0D
<b>KCGS550E</b>	MGC7430D	WCG51US0D	WCG97US6D
KCGS556E	MGC7536D	WCG51US6D	

## GAS SUPPLY REQUIREMENTS

### Type of Gas

#### Natural Gas:

- This cooktop is factory set for use with Natural gas. If converting to LP gas, see the "LP Gas Conversion" instructions provided in the package containing literature. The model/serial rating plate located on the underside of the cooktop base has information on the types of gas that can be used. If the types of gas listed do not include the type of gas available, check with the local gas supplier.

#### LP Gas Conversion:

Conversion must be done by a qualified service technician.

No attempt shall be made to convert the cooktop from the gas specified on the model/serial rating plate for use with a different gas without consulting the serving gas supplier. See the Gas Conversion instructions provided in the package containing literature.

### Gas Supply Line

- Provide a gas supply line of 3/4" (1.9 cm) rigid pipe to the cooktop location. A smaller size pipe on longer runs may result in insufficient gas supply. Pipe-joint compounds that resist the action of LP gas must be used. Do not use TEFLON<sup>®</sup> tape. With LP gas, piping or tubing size should be 1/2" minimum. Usually, LP gas suppliers determine the size and materials used in the system.

#### Flexible metal appliance connector:

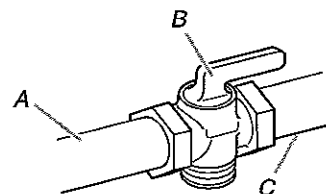
- If local codes permit, use a 1/2" or 3/4" I.D. flexible stainless steel tubing gas connector, designed by CSA to connect the cooktop to the rigid gas supply line.



- A 1/2" male pipe thread is needed for connection to the female pipe threads of the inlet to the cooktop pressure regulator.
- Do not kink or damage the flexible metal tubing when moving the cooktop.

### • Must include a shutoff valve:

The supply line must be equipped with a manual shutoff valve. This valve should be located in the same room but external to the cooktop opening, such as an adjacent cabinet. It must be accessible without removing the cooktop, and it should be in a location that allows ease of opening and closing. Do not block access to shutoff valve. The valve is for turning on or shutting off gas to the cooktop.



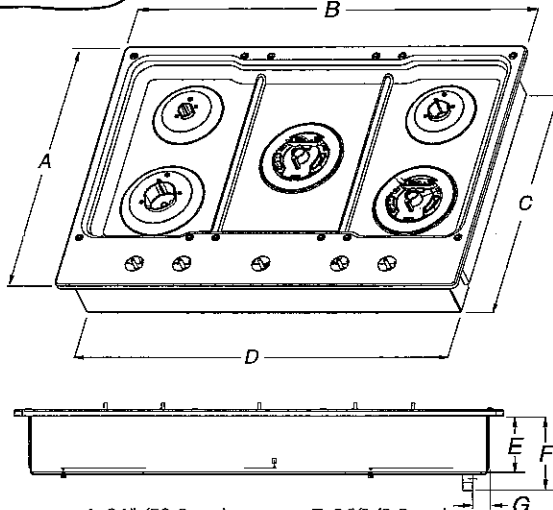
A. Gas supply line  
B. Shutoff valve "open" position  
C. To cooktop

<sup>®</sup>TEFLON is a registered trademark of E.I. Du Pont De Nemours and Company.

## ELECTRICAL REQUIREMENTS

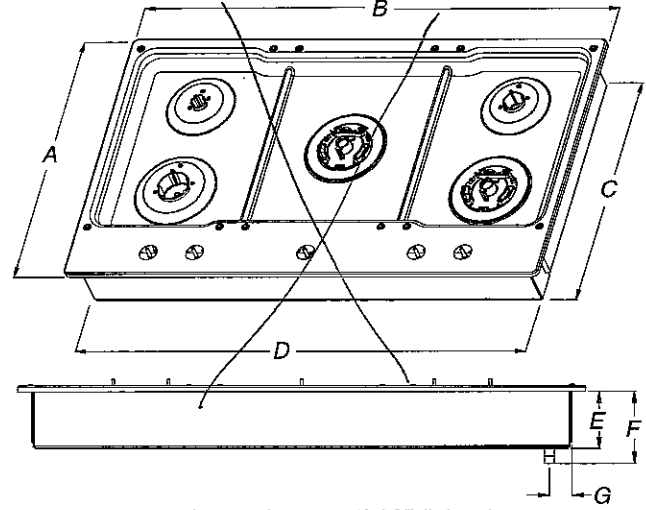
- A 120 volt, 60 Hz, AC only, 15-amp, fused electrical circuit is required. A time-delay fuse or circuit breaker is also recommended. It is recommended that a separate circuit serving only this cooktop be provided.
- Electronic ignition systems operate within wide voltage limits, but proper grounding and polarity are necessary. Check that the outlet provides 120-volt power and is correctly grounded.

KCGS550ESS and KCGS950ESS Models



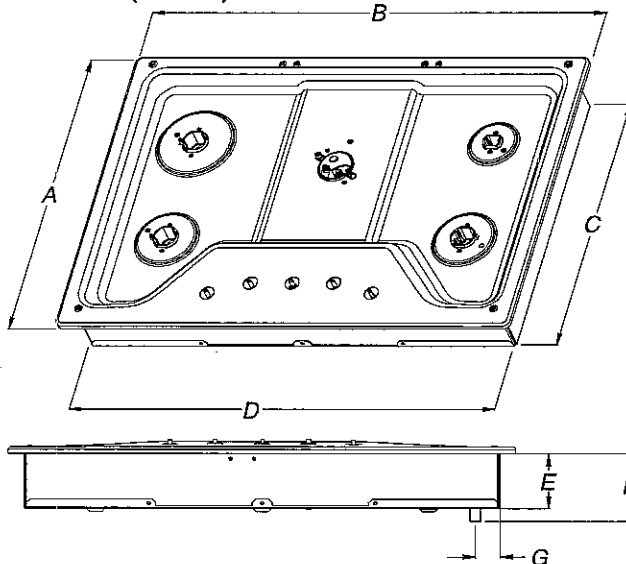
A. 21" (53.3 cm)  
B. 30" (76.2 cm)  
C. 19 7/8" (49.2 cm)  
D. 28 3/8" (72.1 cm)  
E. 3 3/8" (9.2 cm)  
F. 4 7/8" (11.6 cm)  
G. 1 3/8" (3.4 cm)

KCGS556ESS and KCGS956ESS Models



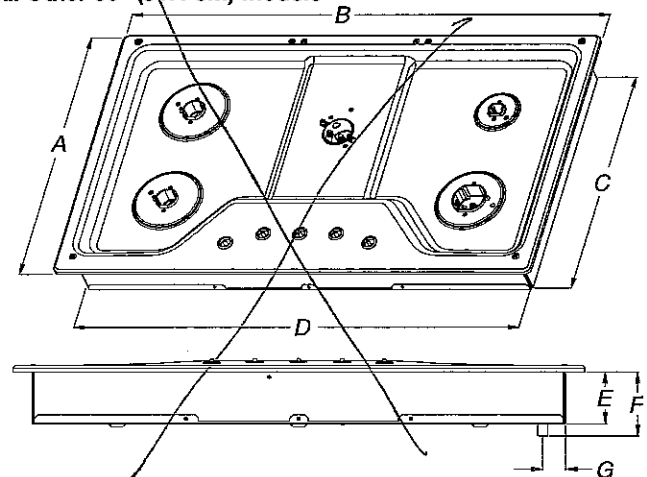
A. 21" (53.3 cm)  
B. 36 1/2" (92.0 cm)  
C. 19 7/8" (49.2 cm)  
D. 34 3/8" (88.1 cm)  
E. 3 3/8" (9.2 cm)  
F. 4 7/8" (11.6 cm)  
G. 1 7/8" (3.6 cm)

All Other 30" (76.2 cm) Models



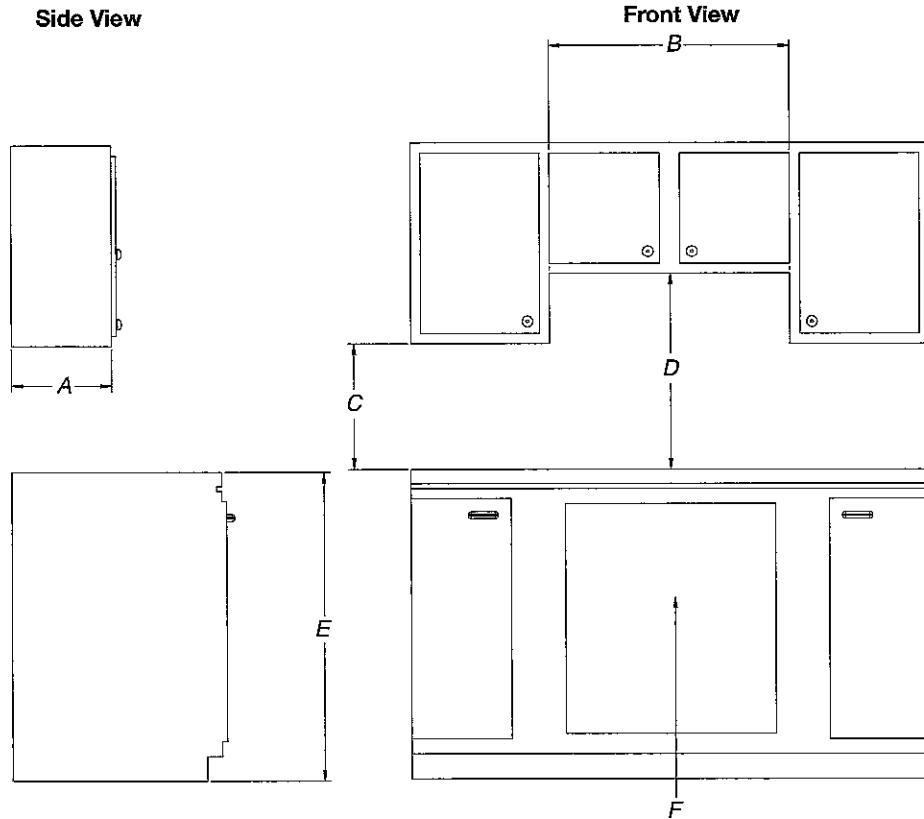
A. 21" (53.3 cm)  
B. 30" (76.2 cm)  
C. 18 7/8" (48.0 cm)  
D. 28 3/8" (72.1 cm)  
E. 3 3/8" (8.6 cm)  
F. 4 1/8" (10.5 cm)  
G. 1 1/2" (3.8 cm)

All Other 36" (91.4 cm) Models



A. 21" (53.3 cm)  
B. 36" (91.4 cm)  
C. 18 7/8" (48.0 cm)  
D. 33 3/4" (85.7 cm)  
E. 3 3/8" (8.6 cm)  
F. 4 1/8" (10.5 cm)  
G. 1 1/2" (3.8 cm)

## CABINET DIMENSIONS



A. 13" (33.0 cm) recommended upper cabinet depth.

B. 30" (76.2 cm) for 30" models; 36" (91.4 cm) for 36" models.

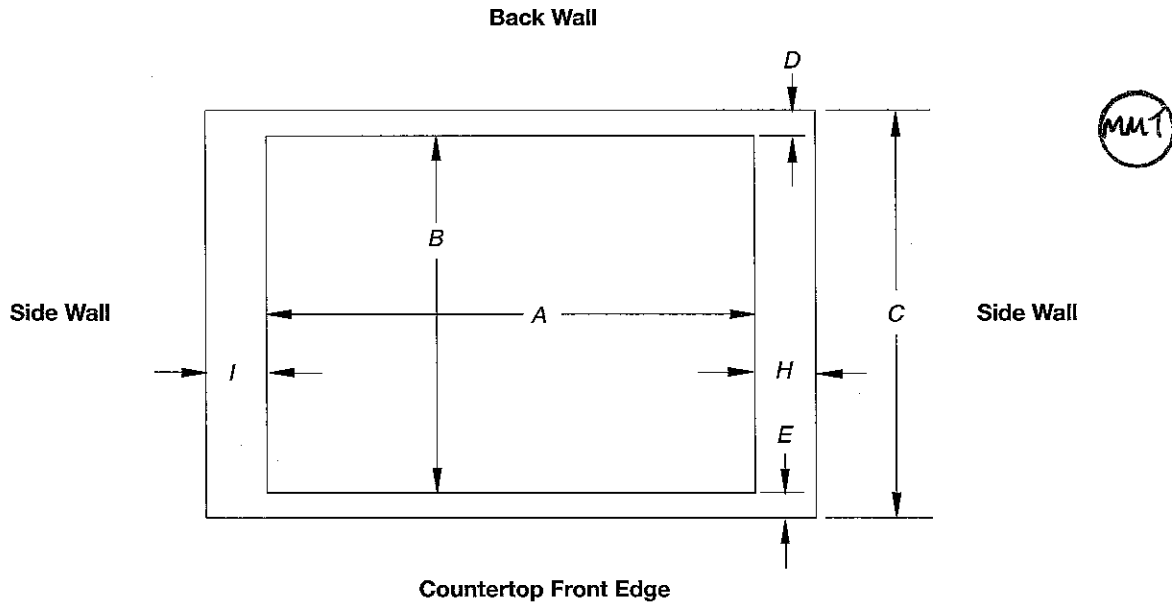
C. 18" (45.7 cm) minimum clearance from upper cabinet to countertop within minimum horizontal clearances to cooktop.

D. 30" (76.2 cm) minimum clearance between top of cooktop platform and bottom of uncovered wood or metal cabinet. 24" (61 cm) minimum clearance if bottom of wood or metal cabinet is covered by not less than 1/4" (0.6 cm) flame retardant millboard covered with not less than No. 28 MSG sheet steel, 0.015" (0.04 cm) stainless steel, or 0.024" (0.06 cm) aluminum or 0.020" (0.05 cm) copper.

E. 36" (91.4 cm) top of countertop to floor.

F. Gas line opening - Wall: anywhere 5" (12.7 cm) below underside of countertop. Cabinet floor: anywhere within 6" (15.2 cm) of rear wall is recommended.





Cutout (Product Opening) Dimensions						
30" (76.2 cm) Models						
Models	A			B		
	Min	Recommended	Max	Min	Recommended	Max
KCGS550 and KCGS950	28 1/2" (72.4 cm)	28 7/8" (73.4 cm)	29 3/8" (74.3 cm)	19 1/2" (49.5 cm)	19 13/16" (50.2 cm)	20" (50.8 cm)
All Other 30" (76.2 cm) Models	28 1/2" (72.4 cm)	28 7/8" (73.4 cm)	29 3/8" (74.3 cm)	19" (48.3 cm)	19 1/2" (49.5 cm)	20" (50.8 cm)
36" (91.4 cm) Models						
KCGS556 and KCGS956	34 7/8" (88.4 cm)	35 3/8" (89.4 cm)	35 3/8" (90.3 cm)	19 1/2" (49.5 cm)	19 13/16" (50.2 cm)	20" (50.8 cm)
All Other 36" (91.4 cm) Models	33 7/8" (86.0 cm)	34 5/8" (87.0 cm)	35 1/4" (89.5 cm)	19" (48.3 cm)	19 1/2" (49.5 cm)	20" (50.8 cm)

Side Walls (Combustible Surfaces)	
Models	H and I
KCGS5 and KCGS9	H and I added together must be at least 48" (122.0 cm), with each side individually being at least 8" (20.3 cm).
KCGS350, KCGS356, MGC9536, WCG97US0, WCG97US6	H and I added together must be at least 48" (122.0 cm), with each side individually being at least 12" (30.5 cm).
All Other Models	Both have to be 8" (20.3 cm) or more.

Back Wall and Countertop Front Dimensions			
Models	C	D	E
KCGS550 and KCGS950	25" (63.5 cm)	2 7/8" (7.3 cm)	2 3/4" (6.9 cm)
All Other Models			3 1/8" (7.9 cm)

**NOTES:** After making the countertop cutout, some installations may require notching down the base cabinet side walls to clear the cooktop base. To avoid this modification, use a base cabinet with sidewalls wider than the cutout.

If cabinet has a drawer, a 4" (10.2 cm) depth clearance from the countertop to the top of the drawer (or other obstruction) in base cabinet is required. The drawer depth may need to be shortened to avoid interfering with the regulator.

**IMPORTANT:** If a built-in wall oven is to be installed below this cooktop, the grounded outlet and gas supply piping must be located in an adjacent cabinet.

This cooktop and its gas and electrical supply sources must be installed before the undercounter built-in wall oven is installed.

# KitchenAid®

FOR THE WAY IT'S MADE.®

## Wall-Mount Canopy Range Hood

BEZ-46R



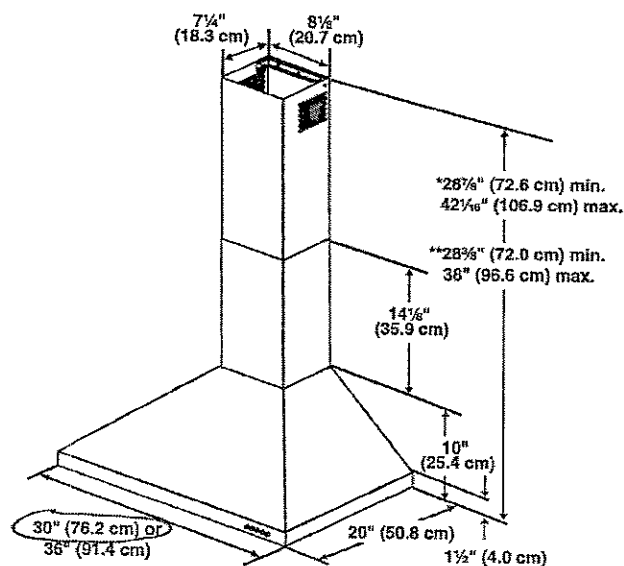
### PRODUCT MODEL NUMBERS

KVWB400D

~~KVWB406B~~

**Electrical:** A 120-volt, 60 Hz, AC only, 15-amp, fused electrical circuit is required.

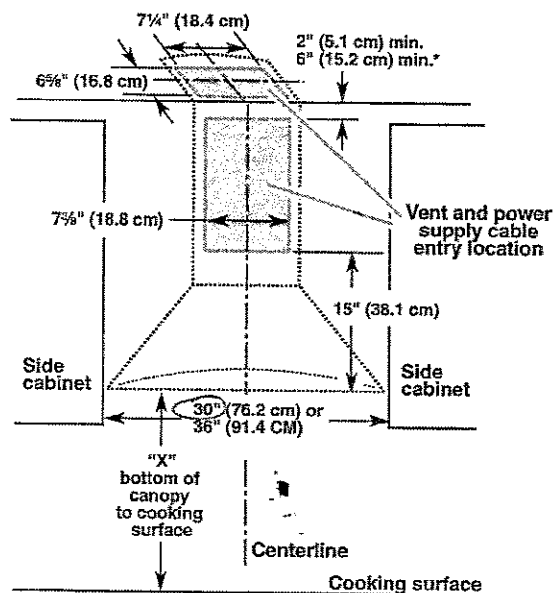
### PRODUCT DIMENSIONS



\*For non-vented (recirculating) installations

\*\*For vented installations

### CABINET DIMENSIONS



\*For non-vented (recirculating) installations

### IMPORTANT:

Minimum distance "X": 24" (61.0 cm) from electric cooking surface.

Minimum distance "X": 27" (68.6 cm) from gas cooking surfaces.

Suggested maximum distance "X": 36" (91.4 cm)

The chimneys can be adjusted for different ceiling heights. See the following chart.

Vented Installations		
	Min. ceiling height	Max. ceiling height
Electric cooking surface	7' 5" (2.26 m)	9' 2" (2.79 m)
Gas cooking surface	7' 8" (2.34 m)	9' 2" (2.79 m)
Non-vented (recirculating) Installations		
	Min. ceiling height	Max. ceiling height
Electric cooking surface	7' 5" (2.26 m)	9' 6" (2.9 m)
Gas cooking surface	7' 8" (2.34 m)	9' 6" (2.9 m)

**\*NOTE:** The range hood chimneys are adjustable and designed to meet varying ceiling or soffit heights depending on the distance "X" between the bottom of the range hood and the cooking surface. For higher ceilings, a Stainless Steel Chimney Extension Kit Part Number W10337357 is available from your dealer or an authorized parts distributor. The chimney extension replaces the upper chimney shipped with the range hood.

## VENTING METHODS

This canopy hood is factory set for venting through the roof or wall.

A 6" (15.2 cm) round vent system is needed for installation (not included). The hood exhaust opening is 6" (15.2 cm) round.

**NOTE:** Flexible vent is not recommended. Flexible vent creates back pressure and air turbulence that greatly reduce performance.

Vent system can terminate either through the roof or wall. To vent through a wall, a 90° elbow is needed.

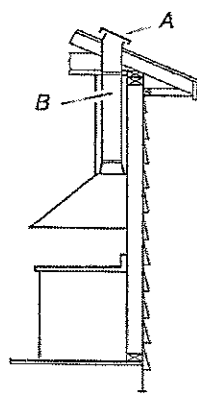
### Rear discharge

A 90° elbow may be installed immediately above the hood.

### For Non-Vented (recirculating) Installations

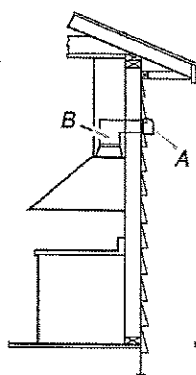
If it is not possible to vent cooking fumes and vapors to the outside, the hood can be used in the non-vented (recirculating) version, using a Recirculation Kit (which includes charcoal filters and a deflector). To order, see the "Assistance or Service" section.

#### Roof Venting



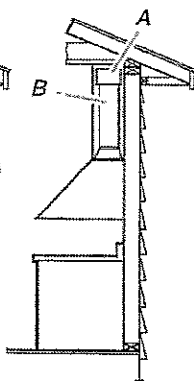
A. Roof cap  
B. 6" (15.2 cm) round vent

#### Wall Venting



A. Wall cap  
B. 6" (15.2 cm) round vent

#### Non-vented (recirculating)



A. Deflector  
B. 6" (15.2 cm) round vent

### Calculating Vent System Length

To calculate the length of the system you need, add the equivalent feet (meters) for each vent piece used in the system.

**Vent Piece** **6" (15.2 cm)**

45° elbow 2.5 ft (0.8 m)

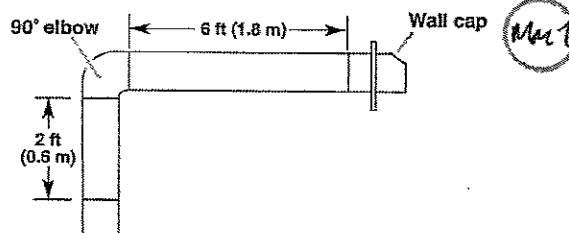


90° elbow 5.0 ft (1.5 m)



Maximum equivalent vent length is 35 ft (10.7 m).

### Example vent system



The following example falls within the maximum recommended vent length of 35 ft (10.7 m).

1 - 90° elbow	= 5.0 ft (1.5 m)
1 - wall cap	= 0.0 ft (0.0 m)
8 ft (2.4 m) straight	= 8.0 ft (2.4 m)
<b>Length of system</b>	<b>= 13.0 ft (3.9 m)</b>

**PRODUCT MODEL NUMBERS**

KRFF300E

**Electrical:** A 115 volt, 60 Hz., AC only 15- or 20-amp fused, grounded electrical supply is required. It is recommended that a separate circuit serving only your refrigerator be provided. Use an outlet that cannot be turned off by a switch. Do not use an extension cord.

**Water:** A cold water supply with water pressure between 30 and 120 psi (207 and 827 kPa) is required to operate the water dispenser and ice maker. If you have questions about your water pressure, call a licensed, qualified plumber.

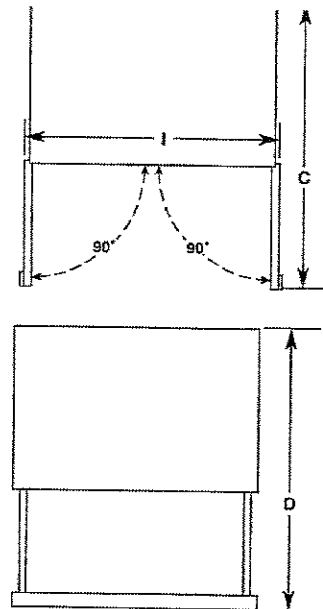
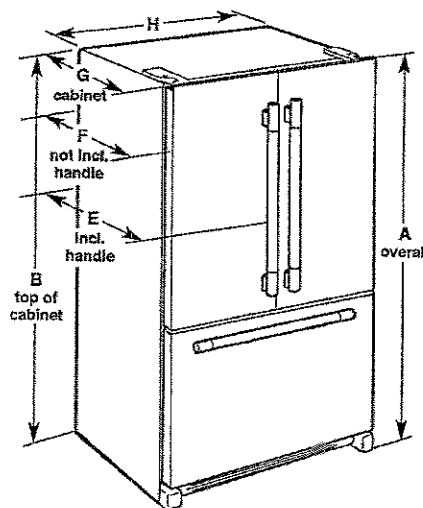
**Reverse Osmosis Water Supply:**

**IMPORTANT:** The pressure of the water supply coming out of a reverse osmosis system going to the water inlet valve of the refrigerator needs to be between 30 and 120 psi (207 and 827 kPa).

If a reverse osmosis water filtration system is connected to your cold water supply, the water pressure to the reverse osmosis system needs to be a minimum of 40 to 60 psi (276 to 414 kPa).

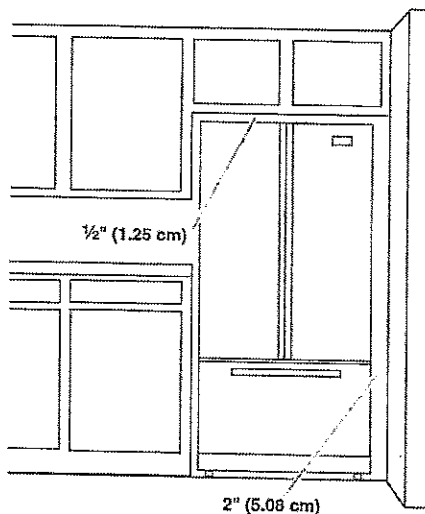
**Bottom Mount Refrigerator**

**PRODUCT DIMENSIONS**



Model Size	Height - Overall "A"	Height - Top of Cabinet "B"	Depth - Doors Open 90° "C"	Depth - Drawer Open "D"	Depth - With Handles "E"	Depth - Without Handles "F"	Depth - Cabinet Only "G"	Width - Cabinet "H"	Width - Door Open 90° "I"
19.7	68 3/4" (173.7 cm)	67 1/2" (171.5 cm)	44 1/8" (112.1 cm)	52" (132.1 cm)	34 3/4" (88.6 cm)	32 1/4" (81.9 cm)	28" (71.1 cm)	30 1/8" (76.5 cm)	33 3/8" (86.4 cm)

**LOCATION REQUIREMENTS**



To ensure proper ventilation for your refrigerator, allow for a 1/2" (1.25 cm) of space on each side and at the top. Allow for a 1" (2.54 cm) space behind the refrigerator. If your refrigerator has an ice maker, allow extra space at the back for the water line connections. When installing your refrigerator next to a fixed wall, leave a 2" (5.08 cm) minimum space between the refrigerator and wall to allow the door to swing open.

**NOTE:** This refrigerator is intended for use in a location where the temperature ranges from a minimum of 55°F (13°C) to a maximum of 110°F (43°C). The preferred room temperature range for optimum performance, which reduces electricity usage and provides superior cooling, is between 60°F (15°C) and 90°F (32°C). It is recommended that you do not install the refrigerator near a heat source, such as an oven or radiator.