

**Kleinburg Glen - 15 - 2 - 42-1 Elev.A ROYALTON**  
**CENTRAL VAC AND WIRING**

Inv.1,570	1 - GREAT ROOM- CONDUIT PIPE - FOR TELEVISION - LOCATE APPROX. 66" AFF ABOVE FIREPLACE, TERMINATING BY CABLE
Line24068	Note:
7Sep17 / 7Sep17	

**CONCRETE AND DRAIN**

Inv.1,570	1 - BACKFLOW PREVENTER VALVE
Line24070	Note:
7Sep17 / 7Sep17	

**DRYWALL**

Inv.1,570	1 - SMOOTH CEILINGS - (2 - Story Design) 2ND FLOOR
Line24069	Note:
7Sep17 / 7Sep17	
Inv.1,570	1 - MAIN FLOOR CEILING 10FT, 8FT TALLER INTERIOR DOORS, TALLER FLAT ARCHES, REAR AND FRONT WINDOWS WITH TRANSOM, TALLER KITCHEN CABINETS WITH CROWN AND FURRING PANEL, ADDED STAIRS AND PICKETS
Line24072	Note:
7Sep17 / 7Sep17	

**ELECTRICAL**

Inv.1,570	1 - GAS LINE ROUGH - MAIN FLOOR - (2 STOREY MODELS) FOR GAS STOVE- INCLUDES 110V PLUG ON SEPARATE CIRCUIT
Line24078	Note:
7Sep17 / 7Sep17	
Inv.1,570	1 - KITCHEN-220V Wall Recepticle on dedicated circuit- FOR FUTURE WALL OVEN AND MICROWAVE COMBO
Line24081	Note:
7Sep17 / 7Sep17	
Inv.1,570	1 - KITCHEN- Under Cabinet Valance strip Lighting - DOES NOT INCLUDE KITCHEN VALANCE-
Line24082	Note:
7Sep17 / 7Sep17	
Inv.1,570	1 - MOVE STANDARD CEILING LIGHT TO ABOVE ISLAND. SEE PLAN FOR LOCATION
Line24083	Note:
7Sep17 / 7Sep17	
Inv.1,570	1 - KITCHEN- ROUGH-IN LIGHT ON EXISTING SWITCH- CAPPED (DOESN'T INLCUDE FIXTURE) USE SAME SWITCH AS STANDARD
Line24084	Note:
7Sep17 / 7Sep17	

**Exterior Colours**

Inv.1,570	1 - EXTERIOR COLOUR PACKAGE # 4
Line24066	Note:
7Sep17 / 7Sep17	

**FRAMING**

Inv.1,570	1 - MAIN FLOOR CEILING 10FT, 8FT TALLER INTERIOR DOORS, TALLER FLAT ARCHES, REAR AND FRONT WINDOWS WITH TRANSOM, TALLER KITCHEN CABINETS WITH CROWN AND FURRING PANEL, ADDED STAIRS AND PICKETS
Line24071	Note:
7Sep17 / 7Sep17	

**Kleinburg Glen - 15 - 2 - 42-1 Elev.A ROYALTON**

Inv.1,570	1 - MAN DOOR GARAGE TO HOUSE - GRADE PERMITS
Line24080	Note:
7Sep17 / 7Sep17	

**HVAC**

Inv.1,570	1 - GAS LINE ROUGH - MAIN FLOOR - (2 STOREY MODELS) FOR GAS COOKTOP- INCLUDES 110V PLUG ON SEPARATE CIRCUIT
Line24077	Note:
7Sep17 / 7Sep17	

**INTERIOR TRIM AND DOORS**

Inv.1,570	1 - MAIN FLOOR CEILING 10FT, 8FT TALLER INTERIOR DOORS, TALLER FLAT ARCHES, REAR AND FRONT WINDOWS WITH TRANSOM, TALLER KITCHEN CABINETS WITH CROWN AND FURRING PANEL, ADDED STAIRS AND PICKETS
Line24073	Note:
7Sep17 / 7Sep17	

**KITCHEN AND BATH CABINETRY**

Inv.1,570	1 - MAIN FLOOR CEILING 10FT, 8FT TALLER INTERIOR DOORS, TALLER FLAT ARCHES, REAR AND FRONT WINDOWS WITH TRANSOM, TALLER KITCHEN CABINETS WITH CROWN AND FURRING PANEL, ADDED STAIRS AND PICKETS
Line24074	Note:
7Sep17 / 7Sep17	

**PAINT**

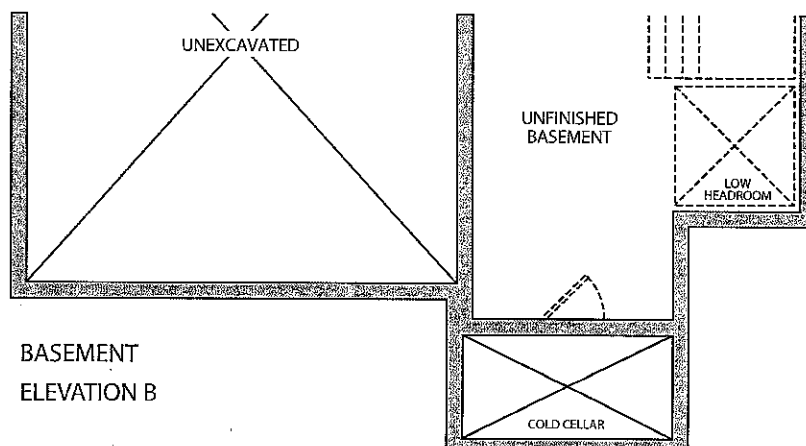
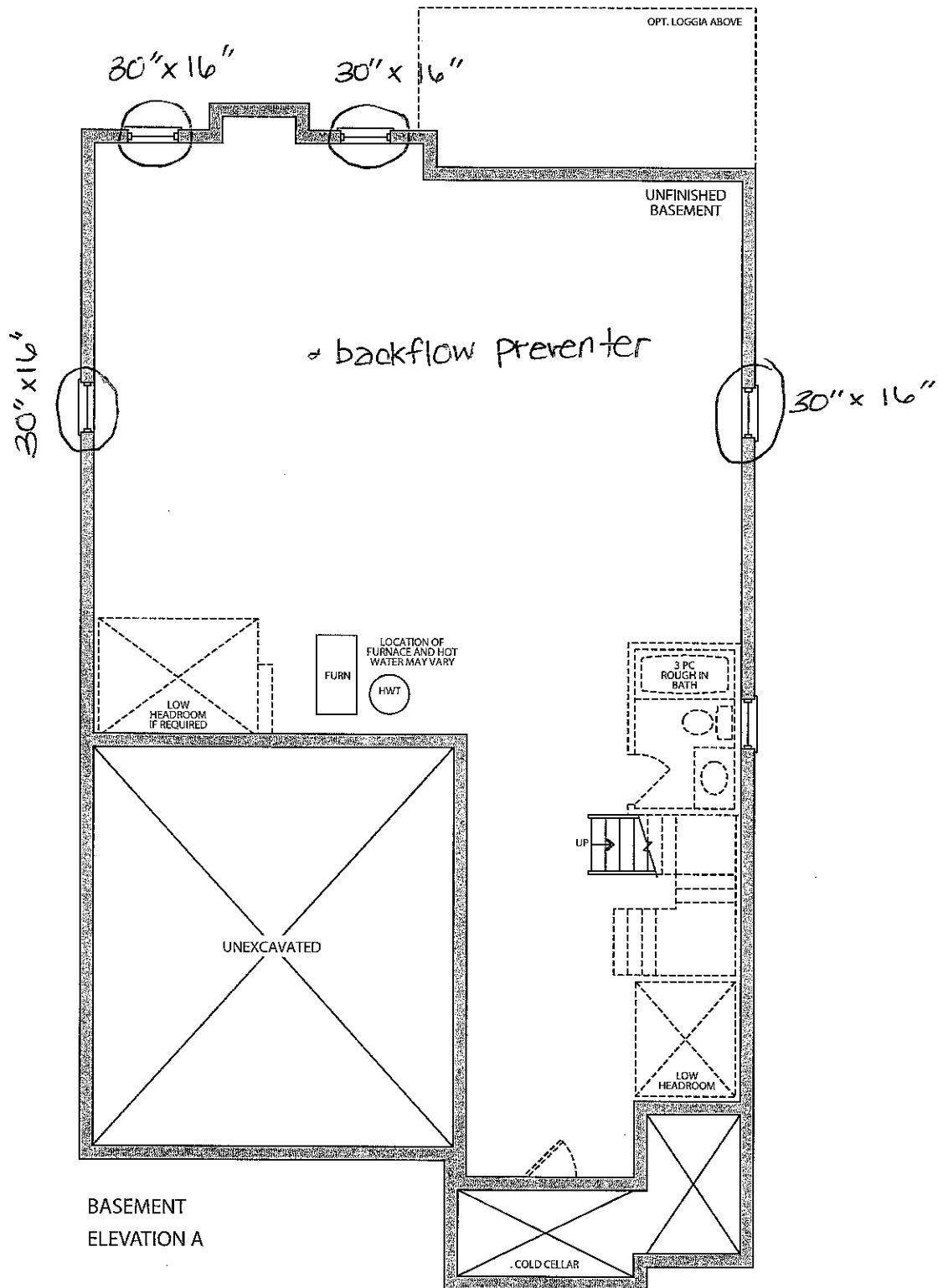
Inv.1,570	1 - MAIN FLOOR CEILING 10FT, 8FT TALLER INTERIOR DOORS, TALLER FLAT ARCHES, REAR AND FRONT WINDOWS WITH TRANSOM, TALLER KITCHEN CABINETS WITH CROWN AND FURRING PANEL, ADDED STAIRS AND PICKETS
Line24075	Note:
7Sep17 / 7Sep17	

**WINDOWS - BASEMENT**

Inv.1,570	5 - UPGRADE 5 X BASEMENT WINDOWS - 30" X 16"
Line24067	Note:
7Sep17 / 7Sep17	

**WINDOWS AND DOORS**

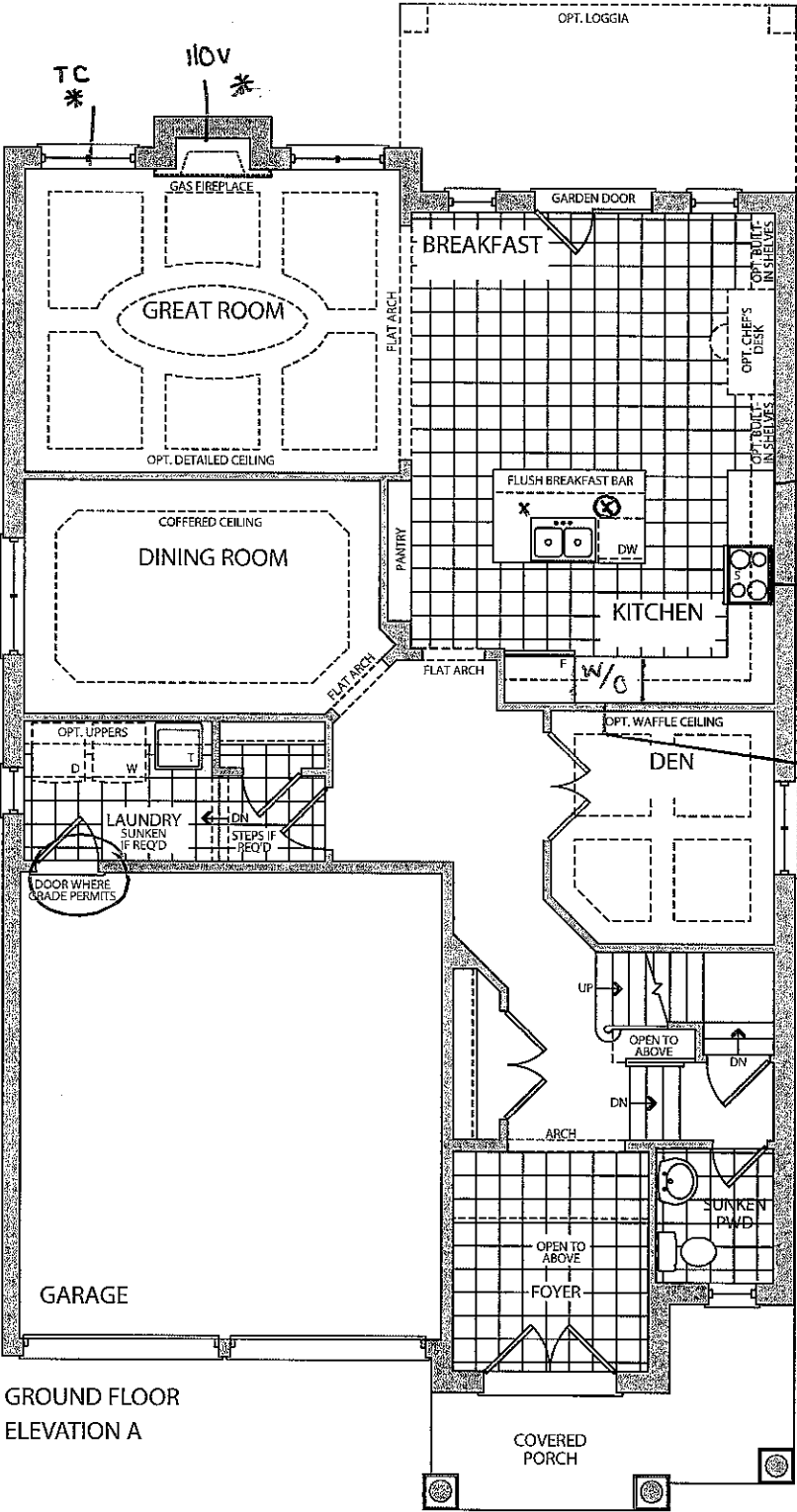
Inv.1,570	1 - MAIN FLOOR CEILING 10FT, 8FT TALLER INTERIOR DOORS, TALLER FLAT ARCHES, REAR AND FRONT WINDOWS WITH TRANSOM, TALLER KITCHEN CABINETS WITH CROWN AND FURRING PANEL, ADDED STAIRS AND PICKETS
Line24076	Note:
7Sep17 / 7Sep17	
Inv.1,570	1 - MAN DOOR GARAGE TO HOUSE - GRADE PERMITS
Line24079	Note:
7Sep17 / 7Sep17	



Elevation A • 3,016 sq.ft.

Elevation B • 3,043 sq.ft.

• 10' main floor package

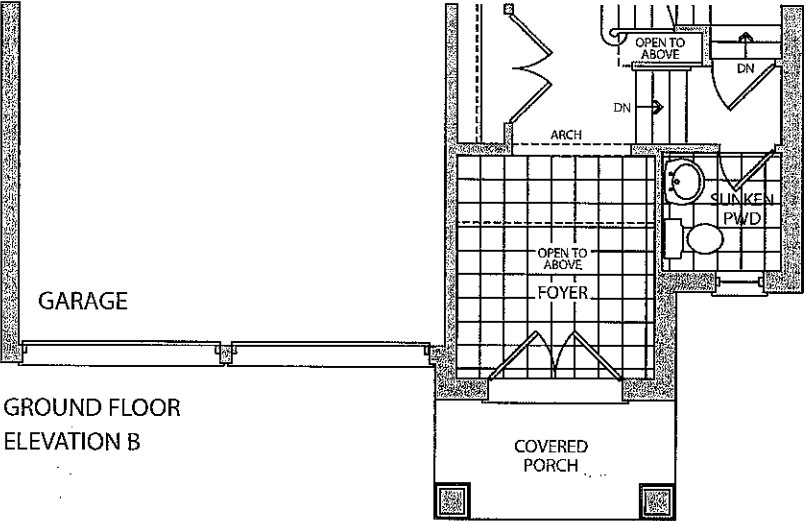


⊗ - standard fixture  
X - capped fixture  
\* conduit

valance strip light  
cooktop w gasoline + 110v

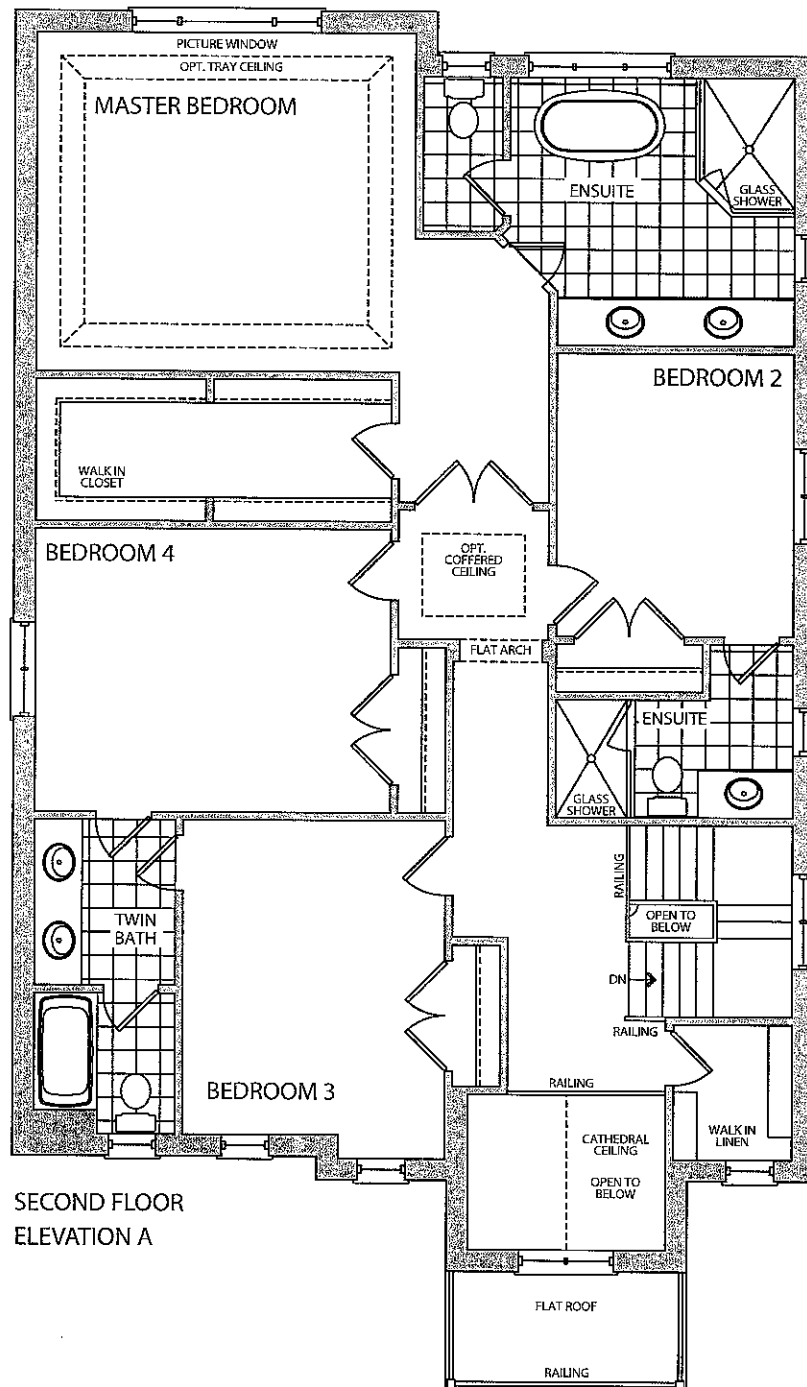
future wall oven 220v

GROUND FLOOR  
ELEVATION A

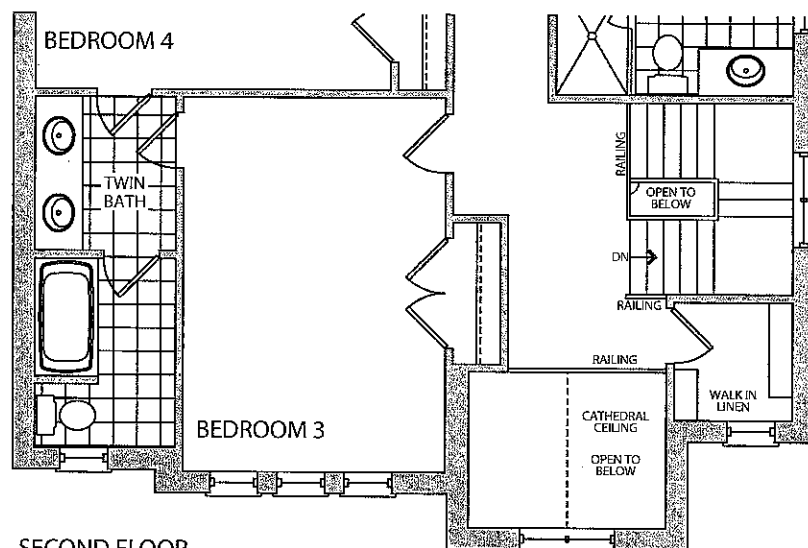


GROUND FLOOR  
ELEVATION B

• smooth ceiling



SECOND FLOOR  
ELEVATION A



SECOND FLOOR  
ELEVATION B