

ADDITION

LOT 75- Kleinburg Glen

PROJECT- Kleinburg Glen

Electrical

- Install 10 main floor potlights

Drywall

- Install smooth ceiling on second floor

Carpet

- Do not install broadloom- **supply only** for second floor non-tiled areas

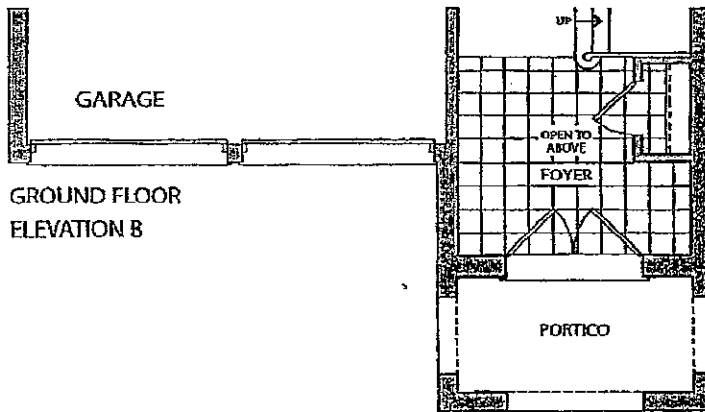
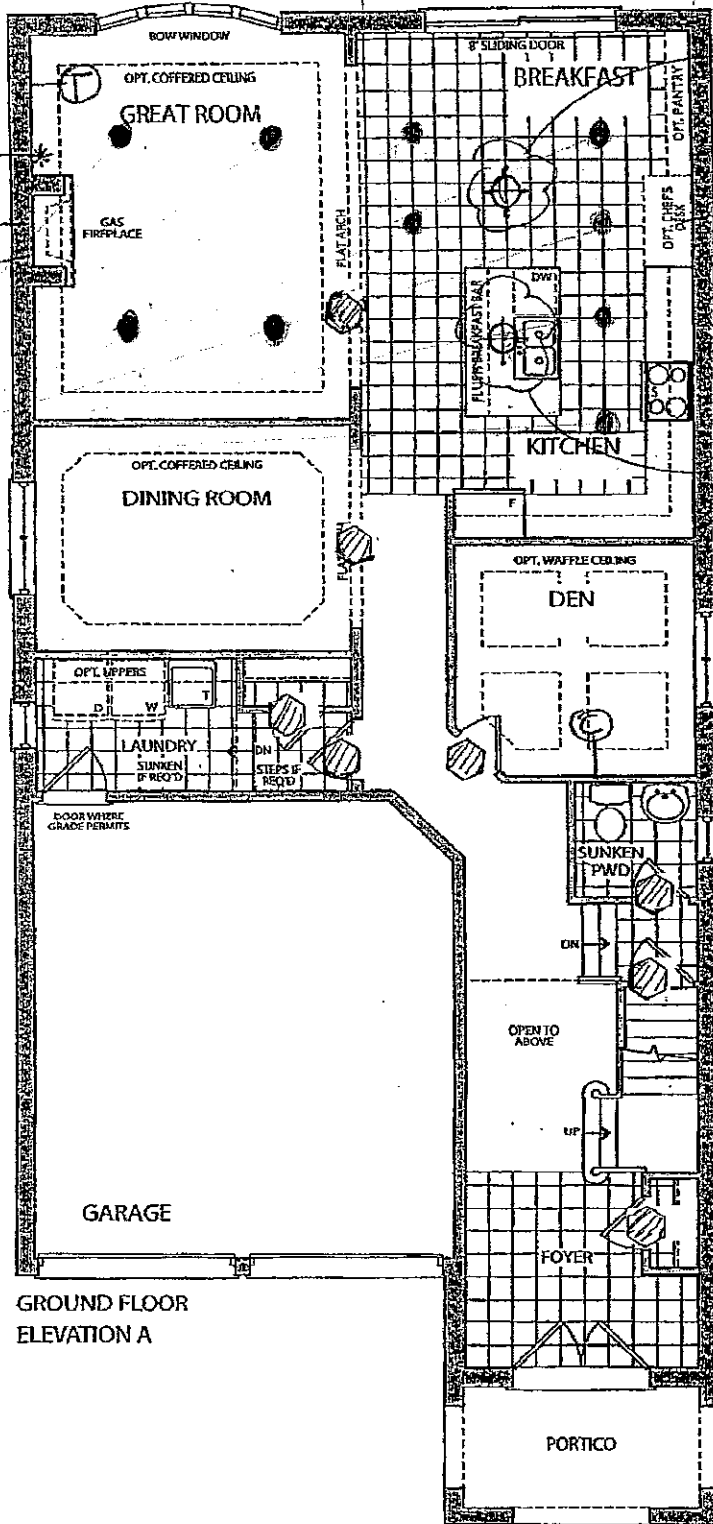
Thank you

DATE ISSUED: 7/5/17

ISSUED BY: Stacey Carlete

Elevation A • 2,951 sq.ft.

Elevation B • 2,954 sq.ft.



CONDUIT TERMINATION
CONDUIT PIPE & CABLE ABOVE FIREPLACE APPROX 66" AFF

POT LIGHTS

EXTEND DOOR HEIGHTS & ARCHWAYS TO 96"

* - CONDUIT PIPE
© - CABLE
Ⓣ - TELEPHONE CAT'S

RELOCATE BREAKFAST LIGHT IN LINE WITH ISLAND LIGHT, APPROX 6ft OVER.

MOVE ISLAND & WALL CABINETS LEFT OF OVEN 6" TOWARDS SLIDING DOOR

10" VENTING PIPE SEE SPEC SHEET ATT'D

RELOCATE KITCHEN CEILING LIGHT CENTER OVER ISLAND

CONCRETE
JAN 29 2017
STRUCTURAL

LOT 75
July 15, 2016

Prices, figures, illustrations, sizes, features and finishes are subject to change without notice. E.&O.E. Areas and dimensions are approximate and actual usable floor space may vary from the stated area. Layout may be reverse of the unit purchased. E. & O.E.