

**Brampton Encore - 83 - 2 - 41-5 Elev.A BRAHMS OPT - OPTG**  
**CENTRAL VAC AND WIRING**

Inv.1,304	1 - TELEPHONE AND CABLE ROUGH-IN LOCATIONS
Line20501	Note:
5Apr17 / 29May17	
Inv.1,304	1 - SMART ETHERNET PACKAGE: INSTALL FOUR (X4) CAT 6 WIRING - UPGRADE AN OUTLET TO CAT 6- MUST SPECIFY LOCATION. SEE SKETCH- IN FAMILY ROOM, DEN, MASTER BDRM AND REC ROOM
Line20503	Note: NOTE: PURCHASER HAS MOVED STANDARD CAT-5 FROM KITCHEN TO DEN AND FROM NANNY BDRM TO REC ROOM
5Apr17 / 29May17	
Inv.1,304	1 - MASTER BEDROOM: INSTALL ROUGH-IN FOR EXTRA SECURITY KEY PAD, BY LIGHT SWITCH
Line20502	Note:
5Apr17 / 29May17	
Inv.1,304	1 - FAMILY ROOM: INSTALL CONDUIT PIPE- FOR TELEVISION- MUST SPECIFY LOCATION AND TERMINATION POINT
Line20504	Note:
5Apr17 / 29May17	
Inv.1,304	1 - CONDUIT PIPE- FROM ATTIC TO ELECTRICAL PANEL- MUST SPECIFY LOCATION AND TERMINATION POINT
Line20506	Note:
5Apr17 / 29May17	
Inv.1,304	1 - FAMILY ROOM: INSTALL ADDITIONAL RG6 CABLE IN THE FAMILY ROOM. SEE SKETCH
Line20508	Note:
5Apr17 / 29May17	

**CONCRETE AND DRAIN**

Inv.1,304	1 - BASEMENT: INSTALL BACKFLOW PREVENTER VALVE
Line21857	Note:
5Apr17 / 29May17	

**DRYWALL**

Inv.1,304	1 - GROUND FLOOR: INSTALL SMOOTH CEILINGS - (3-Story Design) GROUND FLOOR
Line20526	Note:
5Apr17 / 29May17	
Inv.1,304	1 - SECOND FLOOR: INSTALL SMOOTH CEILINGS - (3-Story Design) SECOND FLOOR
Line20527	Note:
5Apr17 / 29May17	

**ELECTRICAL**

Inv.1,304	1 - FAMILY ROOM: INSTALL 110V WALL RECEPTACLE ON DEDICATED CIRCUIT-MUST SPECIFY LOCATION, TO GO ABOVE FIREPLACE. SEE SKETCH
Line20505	Note:
5Apr17 / 29May17	
Inv.1,304	1 - KITCHEN: INSTALL 220V WALL RECEPTICAL ON DEDICATED CIRCUIT- FOR 4 WIRE BUILT-IN WALL OVEN - MUST SPECIFY LOCATION
Line20509	Note:
5Apr17 / 29May17	
Inv.1,304	1 - KITCHEN: ISNTALL 110V WALL RECEPTACLE ON DEDICATED CIRCUIT - FOR MICROWAVE - MICROWAVE NOT INCLUDED
Line20510	Note:
5Apr17 / 29May17	

**Brampton Encore - 83 - 2 - 41-5 Elev.A BRAHMS OPT - OPTG**

Inv.1,304	1 - BASEMENT: INSTALL 200 AMP ELECTRICAL SERVICE
Line20511	Note:
5Apr17 / 29May17	
Inv.1,304	1 - LIVING ROOM/DINING ROOM: RELOCATE STANDARD LIGHT TO THE CENTRE OF THE ROOM.
Line20512	Note:
5Apr17 / 29May17	
Inv.1,304	1 - KITCHEN: INSTALL GAS LINE ROUGH - MAIN FLOOR - (3 STOREY MODELS). INCLUDES 110V FOR STOVE
Line21852	Note:
5Apr17 / 29May17	

**Exterior Colours**

Inv.1,304	1 - EXTERIOR COLOUR PACKAGE # 1
Line21860	Note:
5Apr17 / 29May17	

**FORMING**

Inv.1,304	1 - EXTERIOR: INSTALL SIDE DOOR- HOME TO EXTERIOR- AS PER PLAN AND GRADE PERMITTING
Line20513	Note:
5Apr17 / 29May17	

**FRAMING**

Inv.1,304	1 - MANDOOR - OPTION ONLY AVAILABLE IF GRADE PERMITS
Line20515	Note:
5Apr17 / 29May17	
Inv.1,304	1 - EXTERIOR: INSTALL SIDE DOOR- HOME TO EXTERIOR- AS PER PLAN AND GRADE PERMITTING
Line21854	Note:
5Apr17 / 29May17	
Inv.1,304	1 - KITCHEN: INSTALL UPGRADE VENTING FOR STOVE TO 10" PIPE INTERIOR WALL -
Line21856	Note:
5Apr17 / 29May17	
Inv.1,304	1 - MAIN FLOOR: INSTALL FIVE (X5) STANDARD DOOR EXTENDED HEIGHT 96" (PRICE PER DOOR) MAIN FLOOR 3 STOREY MODELS
Line21858	Note:
5Apr17 / 29May17	
Inv.1,304	1 - DEN: INSTALL TWO (X2) STANDARD FRENCH DOOR EXTENDED HEIGHT 96" (PRICE PER DOOR) MAIN FLOOR 3 STOREY MODELS -
Line21859	Note:
5Apr17 / 29May17	

**HVAC**

Inv.1,304	1 - KITCHEN: INSTALL GAS LINE ROUGH - MAIN FLOOR - (3 STOREY MODELS). INCLUDES 110V FOR STOVE
Line20507	Note:
5Apr17 / 29May17	
Inv.1,304	1 - BASEMENT: INSTALL 2 STAGE FURNACE
Line20517	Note:
5Apr17 / 29May17	

**Brampton Encore - 83 - 2 - 41-5 Elev.A BRAHMS OPT - OPTG**

Inv.1,304	1 - KITCHEN: INSTALL UPGRADE VENTING FOR STOVE TO 10" PIPE INTERIOR WALL -
Line20518	Note:
5Apr17 / 29May17	

**INTERIOR TRIM AND DOORS**

Inv.1,304	5 - MAIN FLOOR: INSTALL FIVE (X5) STANDARD DOOR EXTENDED HEIGHT 96" (PRICE PER DOOR) MAIN FLOOR 3 STOREY MODELS
Line20521	Note:
5Apr17 / 29May17	

Inv.1,304	2 - DEN: INSTALL TWO (X2) STANDARD FRENCH DOOR EXTENDED HEIGHT 96" (PRICE PER DOOR) MAIN FLOOR 3 STOREY MODELS -
Line20522	Note:
5Apr17 / 29May17	

**MISC.**

Inv.1,304	1 - GRADE DID NOT PERMIT EXTERIOR: INSTALL REAR DOOR- GARAGE TO EXTERIOR REFUND ON PE:1394
Line20514	Note:
5Apr17 / 29May17	

Inv.1,304	1 - BONUS PACKAGE: \$10,000.00 (INCLUDING TAXES) WORTH OF UPGRADES FROM GOLD PARK HOMES DÉCOR CENTRE IS BEING APPLIED TOWARD THE STRUCTURAL APPOINTMENT. PURCHASER HAS A REMAINING AMOUNT OF \$00 (INCLUDING TAXES) TO BE USED TOWARD THE COLOUR APPOINTMENT
Line20524	Note:
5Apr17 / 29May17	

Inv.1,304	1 - Purchasers are aware & accepts that ANY changes made to upgrades after signing this Purchasers Extra Form are subject to a minimum administration fee of \$500. PLUS a 10% holdback fee
Line20525	Note:
5Apr17 / 29May17	

**PLUMBING**

Inv.1,304	1 - KITCHEN: INSTALL ROUGH-IN - WATERLINE FOR FRIDGE
Line20519	Note:
5Apr17 / 29May17	

Inv.1,304	1 - BASEMENT: INSTALL BACKFLOW PREVENTER VALVE
Line20520	Note:
5Apr17 / 29May17	

**WINDOWS - BASEMENT**

Inv.1,304	3 - BASEMENT: INSTALL THREE (X3) BASEMENT WINDOWS - UPGRADE EXISTING BASEMENT WINDOW TO 30 INCH X 24 INCH - MAY REQUIRE INSTALLATION OF WINDOW WELL
Line20516	Note:
5Apr17 / 29May17	

**WINDOWS AND DOORS**

Inv.1,304	1 - EXTERIOR: INSTALL SIDE DOOR- HOME TO EXTERIOR- AS PER PLAN AND GRADE PERMITTING
Line21853	Note:
5Apr17 / 29May17	

Brampton Encore - 83 - 2 - 41-5 Elev.A BRAHMS OPT - OPTG

Inv.1,304	1 - MANDOOR - OPTION ONLY AVAILABLE IF GRADE PERMITS
Line21855	Note:
5Apr17 / 29May17	

Telephone - Cat 5 - (T)  
Cable RG6 - (C)  
Electrical - (E)

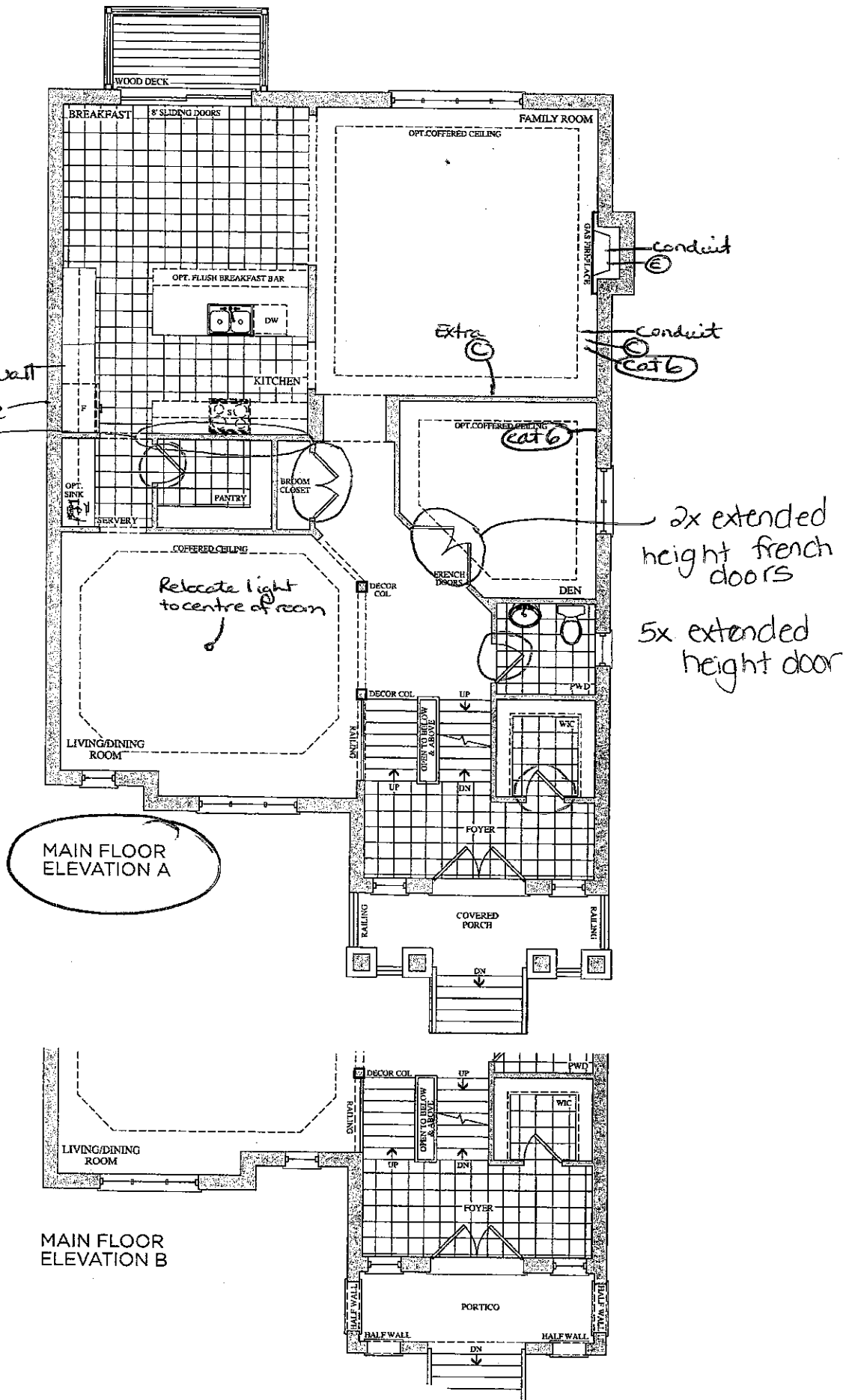
# Brahms

## 41' SERIES

Elevation A • 4,038 sq.ft. | Elevation B • 4,038 sq.ft.

• Gasline for cooktop

micro/wall oven  
waterline  
10" venting for range hood



Prices, figures, illustrations, sizes, features and finishes are subject to change without notice. E.&O.E. Areas and dimensions are approximate and actual usable floor space may vary from the stated area. Layout may be reverse of the unit purchased. E. & O.E.

**GOLDPARK**  
HOMES

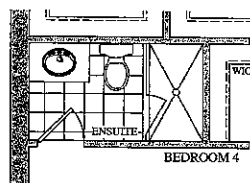
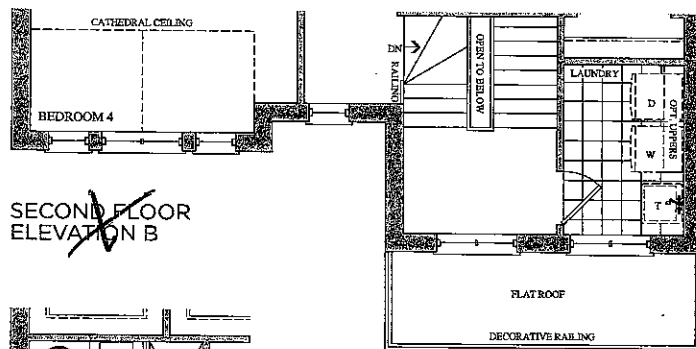
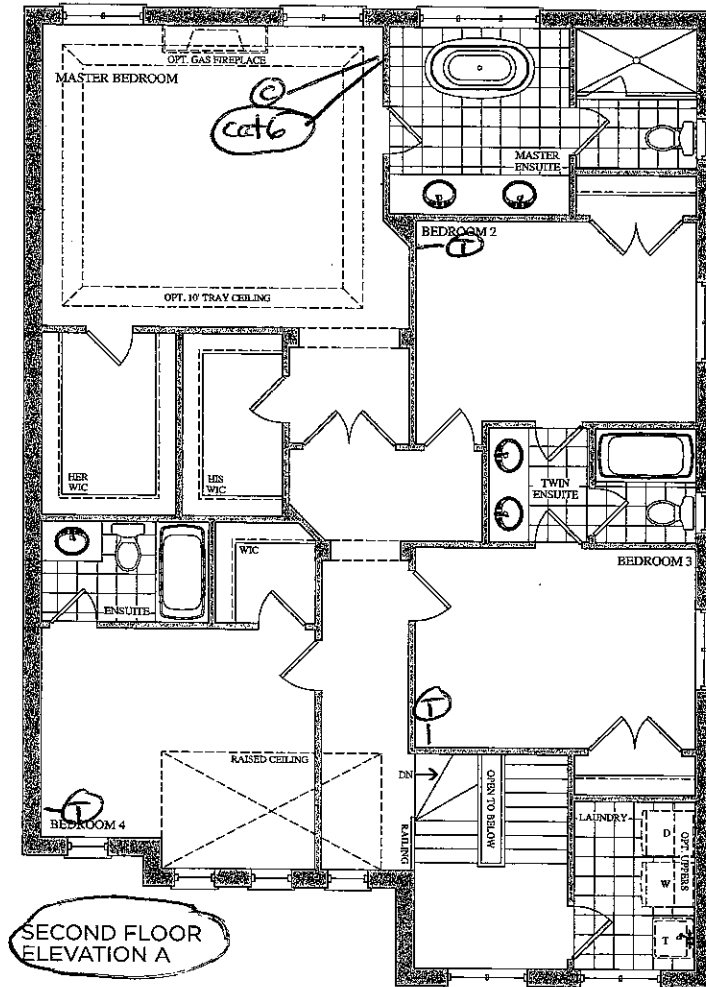
- Lot 83  
Apr. 5, 17

BL

Telephone cat5 — (T)  
Cable RG6 — (C)  
Electrical — (E)

The  
**Brahms**  
41' SERIES

Elevation A • 4,038 sq.ft. | Elevation B • 4,038 sq.ft.



Prices, figures, illustrations, sizes, features and finishes are subject to change without notice. E.&O.E. Areas and dimensions are approximate and actual usable floor space may vary from the stated area. Layout may be reverse of the unit purchased. E. & O.E.

**GOLDPARK**  
H O M E S

Lot 83  
Apr. 5, 17  
(iR) (S)

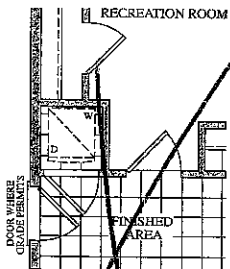
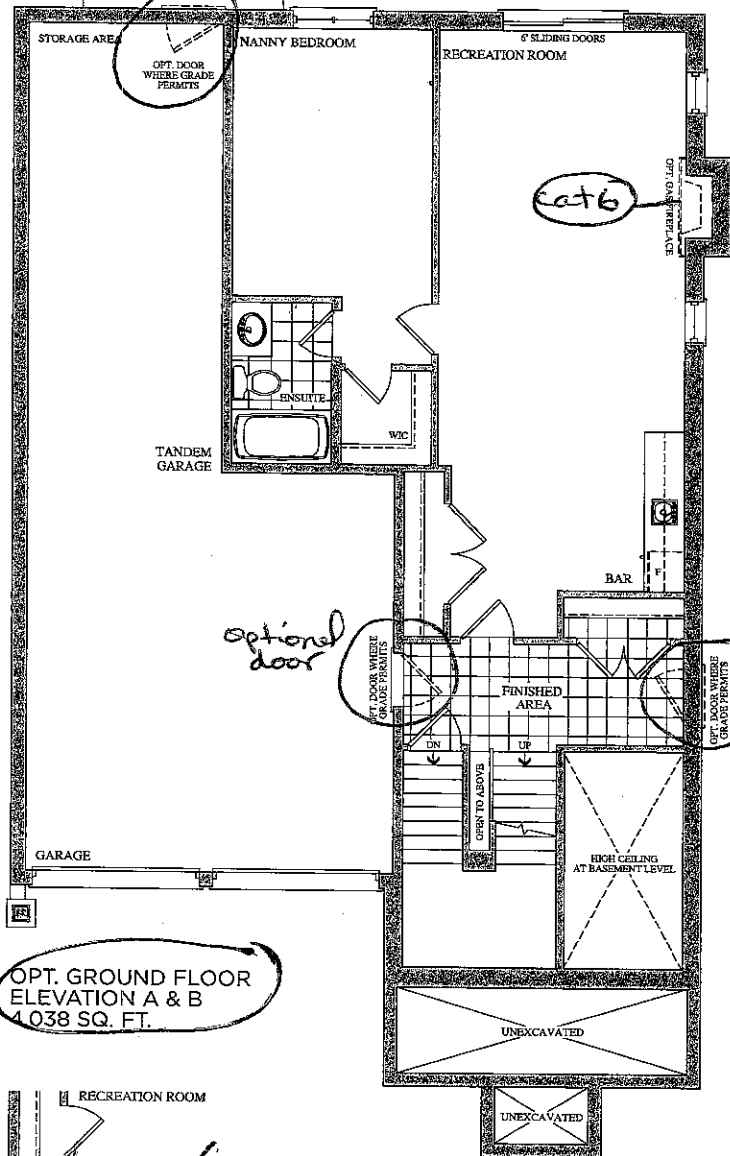
Telephone Cat5 — (T)  
Cable RG6 — (C)  
Electrical — (E)

The  
**Brahms**  
41' SERIES

Elevation A • 4,038 sq.ft. | Elevation B • 4,038 sq.ft.

grade doesn't permit  
optional  
Door

smooth ceiling

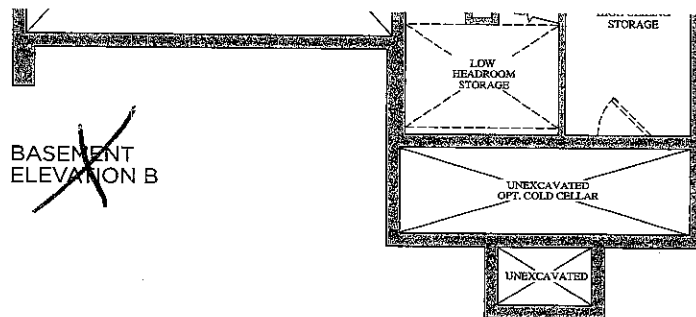


Prices, figures, illustrations, sizes, features and finishes are subject to change without notice. E.&O.E. Areas and dimensions are approximate and actual usable floor space may vary from the stated area. Layout may be reverse of the unit purchased. E. & O.E.

**GOLDPARK**  
HOMES

Lot 83  
Apr. 5, 17





Lot 83  
Apr. 5, 17







Stacey Carlete  
Project Coordinator



Claude Azzopardi  
Contracts Manager



Nancy Mc  
Corporate C

83<sup>ph2</sup>  
Lot #



38.1 The Bizet			
Elevation	Circle One	A	2189.6 Square Feet
		B	2186.7 Square Feet
Optional Layouts	Circle All that Apply		

38.2 The Ravel			
Elevation	Circle One	A	2271.5 Square Feet
		B	2273.7 Square Feet
Optional Layouts	Circle All that Apply		

38.3 The Haydn			
Elevation	Circle One	A	2394.5 Square Feet
		B	2388.3 Square Feet
Optional Layouts	Circle All that Apply		

38.4 The Vivaldi			
Elevation	Circle One	A	2459.1 Square Feet
		B	2459.1 Square Feet
Optional Layouts	Circle All that Apply		

38.5 The Handel			
Elevation	Circle One	A	2549.2 Square Feet
		B	2554.7 Square Feet
Optional Layouts	Circle All that Apply		

38.9 The Puccini			
Elevation	Circle One	A	3628.0 Square Feet
		B	3634.7 Square Feet
Optional Layouts	Circle All that Apply	GFA1	GROUND FLOOR Optional Alternative Layout

38.6 The Scarlatti			
Elevation	Circle One	A	3521.1 Square Feet
		B	3508.1 Square Feet
Optional Layouts	Circle All that Apply	GFA1	GROUND FLOOR Optional Alternative Layout

38.7 The Schubert			
Elevation	Circle One	A	3593.8 Square Feet
		B	3610.5 Square Feet
Optional Layouts	Circle All that Apply	GFA1	GROUND FLOOR Optional Alternative Layout
		SFA4	SECOND FLOOR Additional Bedroom

38.8 The Corelli			
Elevation	Circle One	A	3801.5 Square Feet
		B	3801.5 Square Feet
Optional Layouts	Circle All that Apply	GFA1	GROUND FLOOR Optional Alternative Layout
		SFA4	SECOND FLOOR Additional Bedroom w/ Ensuite

41.1 The Strauss			
Elevation	Circle One	A	2554.2 Square Feet
		B	2571.2 Square Feet
Optional Layouts	Circle All that Apply	SFA1	SECOND FLOOR Shower in Lieu of Tub B2

41.2 The Mozart			
Elevation	Circle One	A	2725.9 Square Feet
		B	2711.1 Square Feet
Optional Layouts	Circle All that Apply	SFA1	SECOND FLOOR Shower in Lieu of Tub B2

41.3 The Chopin			
Elevation	Circle One	A	2800.0 Square Feet
		B	2810.5 Square Feet
Optional Layouts	Circle All that Apply		

41.4 The Bach			
Elevation	Circle One	A	2894.4 Square Feet
		B	2894.5 Square Feet
Optional Layouts	Circle All that Apply		

41.5 The Brahms			
Elevation	Circle One	A	3948.1 Square Feet
		B	3949.1 Square Feet
Optional Layouts	Circle All that Apply	GFA1	GROUND FLOOR Optional Alternative Layout
		SFA2	SECOND FLOOR Shower in Lieu of Tub B4
		SFA3	SECOND FLOOR Optional Laundry Layout

41.6 The Verdi			
Elevation	Circle One	A	3862.5 Square Feet
		B	3866.4 Square Feet
Optional Layouts	Circle All that Apply	GFA1	GROUND FLOOR Optional Alternative Layout
		SFA3	SECOND FLOOR Optional Laundry Layout



Lot 83  
ph 2

**KitchenAid® Range Hood - 36" (91.4 cm) and 48" (121.9 cm)**

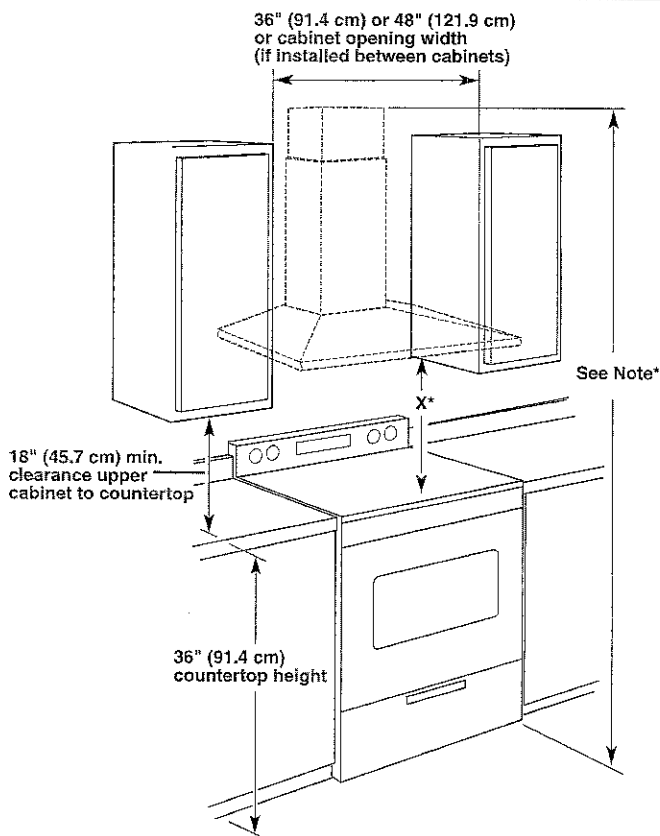
**PRODUCT MODEL NUMBERS**

KXW9736Y      KXW9748Y

**Electrical Requirements:**

- A 120 volt, 60 Hz., AC only, 15-amp, fused electrical circuit is required.
- If the house has aluminum wiring, follow the procedure below:
  1. Connect a section of solid copper wire to the pigtail leads.
  2. Connect the aluminum wiring to the added section of copper wire using special connectors and/or tools designed and UL listed for joining copper to aluminum.Follow the electrical connector manufacturer's recommended procedure. Aluminum/copper connection must conform with local codes and industry accepted wiring practices.

**CABINET OPENING DIMENSIONS**



**IMPORTANT:**

Minimum distance "X": 24" (61 cm) from electric cooking surfaces  
Minimum distance "X": 30" (76.2 cm) from gas cooking surfaces  
The chimneys can be adjusted for different ceiling heights. See the following chart.

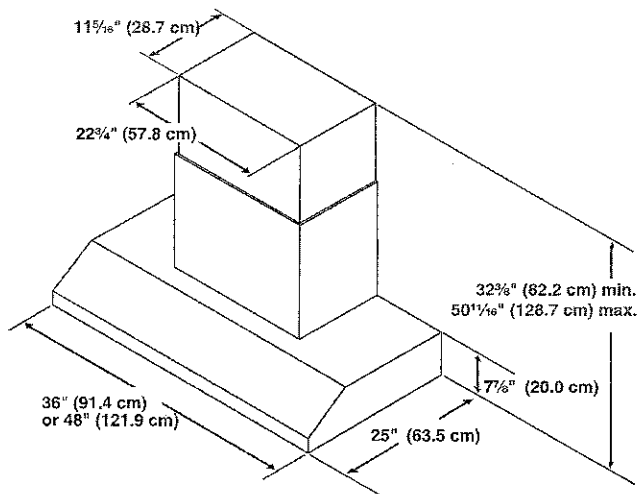
**Vented Installations**

	Min. ceiling height	Max. ceiling height
Electric cooking surface	7' 9" (2.36 m)	10' 2" (3.1 m)
Gas cooking surface	8' 3" (2.51 m)	10' 2" (3.1 m)

**\*NOTE:** The range hood chimneys are adjustable and designed to meet varying ceiling or soffit heights depending on the distance "X" between the bottom of the range hood and the cooking surface. For higher ceilings, an Extension Kit Part Number W10352733 is available from your dealer or an authorized parts distributor. The chimney extension replaces the upper chimney shipped with the range hood.

**PRODUCT DIMENSIONS**

**Vented Installations**



**VENTING REQUIREMENTS**

- Vent system must terminate to the outdoors.
- Do not terminate the vent system in an attic or other enclosed area.
- Do not use 4" (10.2 cm) laundry-type wall caps.
- Use metal vent only. Rigid metal vent is recommended. Plastic or metal foil vent is not recommended.
- The length of vent system and number of elbows should be kept to a minimum to provide efficient performance.

**For the most efficient and quiet operation:**

- Use no more than three 90° elbows.
- Make sure there is a minimum of 24" (61.0 cm) of straight vent between the elbows if more than 1 elbow is used.
- Do not install 2 elbows together.
- Use clamps to seal all joints in the vent system.
- The vent system must have a damper. If the roof or wall cap has a damper, do not use the damper supplied with the range hood.
- Use caulking to seal exterior wall or roof opening around the cap.
- The size of the vent should be uniform.

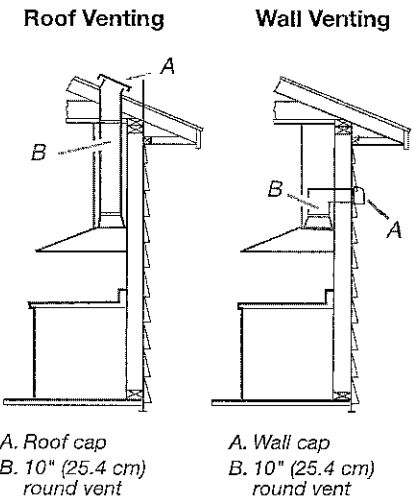
**Venting Methods**

**Typical Internal Blower Motor System Venting Installations**

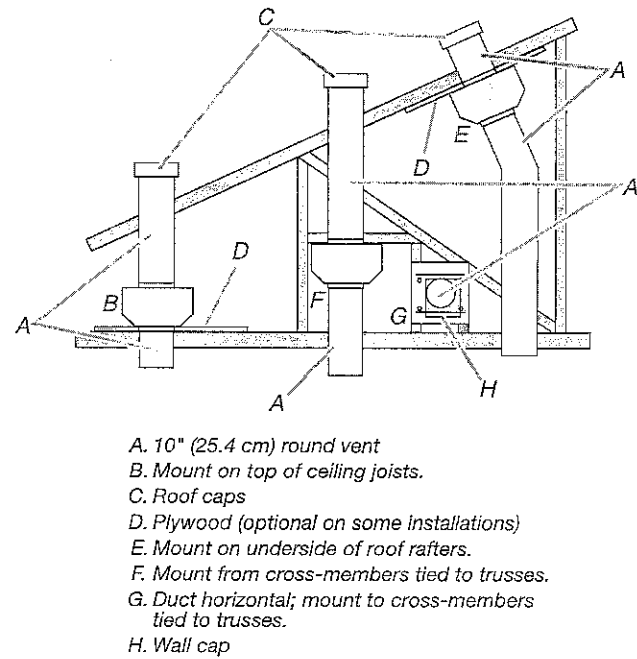
A 10" (25.4 cm) round vent system is needed for installation (not included). The range hood exhaust opening is 10" (25.4 cm) round.

**NOTE:** Flexible vent is not recommended. Flexible vent creates back pressure and air turbulence that greatly reduce performance.

Vent system can terminate either through the roof or wall. To vent through the wall, a 90° elbow is needed.



Typical In-line Blower Motor System Venting Installations



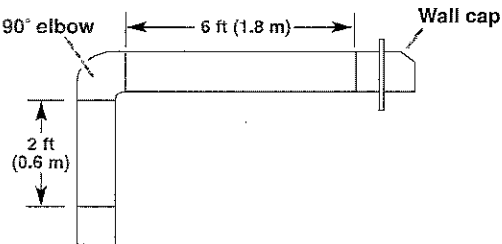
Calculating Vent System Length

To calculate the length of the system you need, add the equivalent feet (meters) for each vent piece used in the system.

Vent Piece	Equivalent Length
45° elbow	2.5 ft (0.8 m)
90° elbow	5.0 ft (1.5 m)

The maximum equivalent vent lengths are:  
10" (25.4 cm) round vent - 60 ft (18.3 m)

Example vent system



The following example falls within the maximum recommended vent length.

1 - 90° elbow	= 5.0 ft (1.5 m)
1 - wall cap	= 0.0 ft (0.0 m)
8 ft (2.4 m) straight	= 8.0 ft (2.4 m)
Length of system	= 13.0 ft (3.9 m)

Lot 83  
ph 2

**KitchenAid®**

FOR THE WAY IT'S MADE.®

**36" and 42" (91.4 cm and 106.7 cm) Island Canopy Range Hood**

**PRODUCT MODEL NUMBERS**

KVIB606DSS

KVIB602DSS

KVIB606DBS

**Electrical:** A 120 volt, 60 Hz., AC only, 15-amp, fused electrical circuit is required.

**VENTING METHODS**

This canopy range hood is factory set for venting through the roof or through the wall.

A 6" (15.2 cm) round vent system is needed for installation (not included). The hood exhaust opening is 6" (15.2 cm) round.

**NOTE:** Flexible vent is not recommended. Flexible vent creates back pressure and air turbulence that greatly reduce performance.

Vent system can terminate either through the roof or wall. To vent through a wall, a 90° elbow is needed.

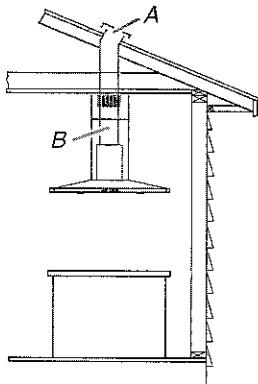
**Rear Discharge**

A 90° elbow may be installed immediately above the hood.

**For Non-Vented (Recirculating) Installations**

If it is not possible to vent cooking fumes and vapors to the outside, the hood can be used in the non-vented (recirculating) version, using a Recirculation Kit (which includes charcoal filters and a deflector). To order, see the "Assistance or Service" section.

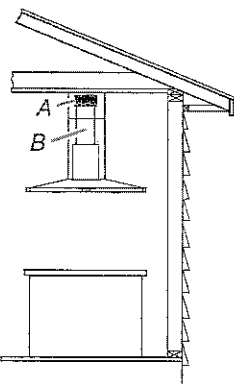
**Roof Venting**



A. Roof cap

B. 6" (15.2 cm) round vent

**Non-Vented (Recirculating)**



A. Deflector

B. 6" (15.2 cm) round vent

**Calculating Vent System Length**

To calculate the length of the system you need, add the equivalent feet (meters) for each vent piece used in the system.

**Vent System**

**Vent Piece**

**6" (15.2 cm) Round**

45° elbow

2.5 ft  
(0.8 m)



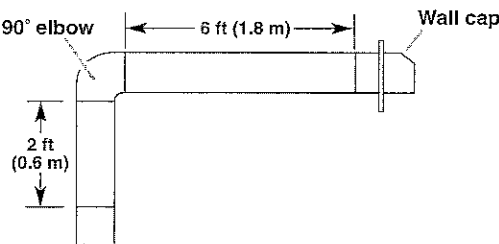
90° elbow

5.0 ft  
(1.5 m)



Maximum equivalent vent length is 35 ft (10.7 m).

**Example Vent System**



The following example falls within the maximum recommended vent length of 35 ft (10.7 m).

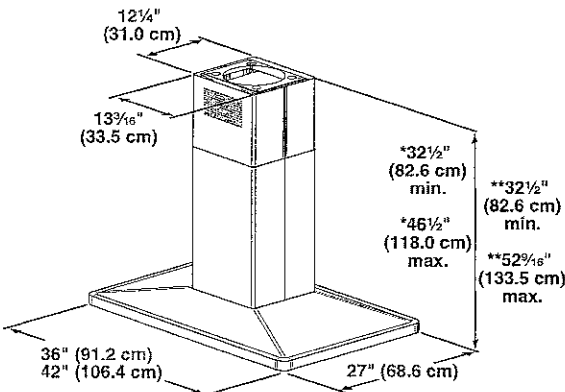
1 - 90° elbow = 5.0 ft (1.5 m)

1 - wall cap = 0.0 ft (0.0 m)

8 ft (2.4 m) straight = 8.0 ft (2.4 m)

Length of system = 13.0 ft (3.9 m)

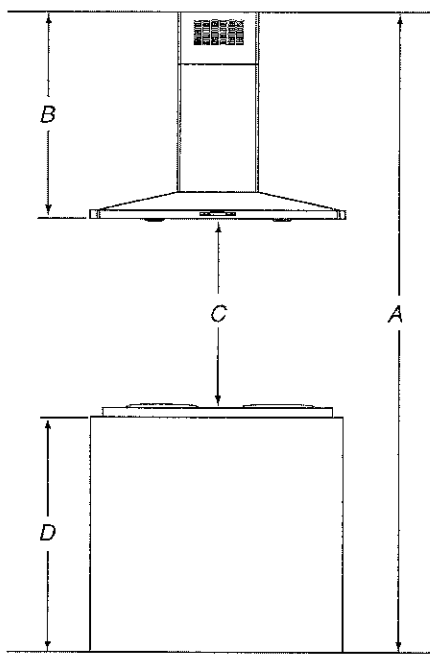
**PRODUCT DIMENSIONS**



\*Vented installations only

\*\*Non-vented (recirculating) installations only

INSTALLATION DIMENSIONS



A. Ceiling height  
B. Hood height from ceiling to bottom of the range hood:  $A - C - D = B$   
C. 24" (61.0 cm) minimum to 36" (91.4 cm) maximum suggested hood height  
D. Countertop height

IMPORTANT:

- Minimum distance "C": 24" (61.0 cm) from electric cooking surface.
- Minimum distance "C": 27" (68.6 cm) from gas cooking surface.
- Suggested maximum distance "C": 36" (91.4 cm)

The chimneys can be adjusted for different ceiling heights. See the following chart.

Vented Installations		
	Min. ceiling height	Max. ceiling height
Electric cooking surface	7' 9" (2.36 m)	9' 10" (3.0 m)
Gas cooking surface	8' (2.44 m)	9' 10" (3.0 m)

Non-vented (recirculating) Installations		
	Min. ceiling height	Max. ceiling height
Electric cooking surface	7' 9" (2.36 m)	10' 4" (3.15 m)
Gas cooking surface	8' (2.44 m)	10' 4" (3.15 m)

**\*NOTE:** The range hood chimneys are adjustable and designed to meet varying ceiling or soffit heights depending on the distance "X" between the bottom of the range hood and the cooking surface. For higher ceilings, a Chimney Extension Kit is available from your dealer or an authorized parts distributor. The chimney extension replaces the chimney shipped with the range hood. To order, see the "Assistance or Service" section.

Lot 83  
ph 2

30" (76.2 CM) AND 36" (91.4 CM) GAS BUILT-IN COOKTOP

PRODUCT MODEL NUMBERS

KCGS350E	KCGS950E	MGC9530D	WCG75US0D
KCGS356E	KCGS956E	MGC9536D	WCG97US0D
KCGS550E	MGC7430D	WCG51US0D	WCG97US6D
KCGS556E	MGC7536D	WCG51US6D	

GAS SUPPLY REQUIREMENTS

Type of Gas

Natural Gas:

- This cooktop is factory set for use with Natural gas. If converting to LP gas, see the "LP Gas Conversion" instructions provided in the package containing literature. The model/serial rating plate located on the underside of the cooktop base has information on the types of gas that can be used. If the types of gas listed do not include the type of gas available, check with the local gas supplier.

LP Gas Conversion:

Conversion must be done by a qualified service technician.

No attempt shall be made to convert the cooktop from the gas specified on the model/serial rating plate for use with a different gas without consulting the serving gas supplier. See the Gas Conversion instructions provided in the package containing literature.

Gas Supply Line

- Provide a gas supply line of ¾" (1.9 cm) rigid pipe to the cooktop location. A smaller size pipe on longer runs may result in insufficient gas supply. Pipe-joint compounds that resist the action of LP gas must be used. Do not use TEFLON<sup>®</sup> tape. With LP gas, piping or tubing size should be ½" minimum. Usually, LP gas suppliers determine the size and materials used in the system.

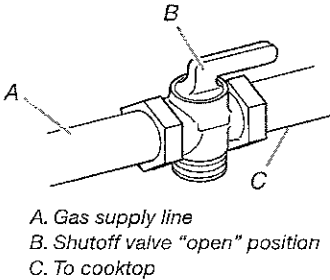
Flexible metal appliance connector:

- If local codes permit, use a ½" or ¾" I.D. flexible stainless steel tubing gas connector, designed by CSA to connect the cooktop to the rigid gas supply line.



- A ½" male pipe thread is needed for connection to the female pipe threads of the inlet to the cooktop pressure regulator.
- Do not kink or damage the flexible metal tubing when moving the cooktop.

- Must include a shutoff valve:  
The supply line must be equipped with a manual shutoff valve. This valve should be located in the same room but external to the cooktop opening, such as an adjacent cabinet. It must be accessible without removing the cooktop, and it should be in a location that allows ease of opening and closing. Do not block access to shutoff valve. The valve is for turning on or shutting off gas to the cooktop.



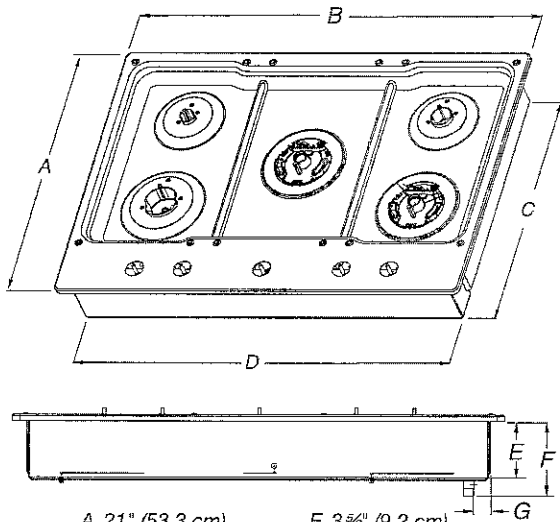
<sup>®</sup>TEFLON is a registered trademark of E.I. Du Pont De Nemours and Company.

ELECTRICAL REQUIREMENTS

- A 120 volt, 60 Hz, AC only, 15-amp, fused electrical circuit is required. A time-delay fuse or circuit breaker is also recommended. It is recommended that a separate circuit serving only this cooktop be provided.
- Electronic ignition systems operate within wide voltage limits, but proper grounding and polarity are necessary. Check that the outlet provides 120-volt power and is correctly grounded.

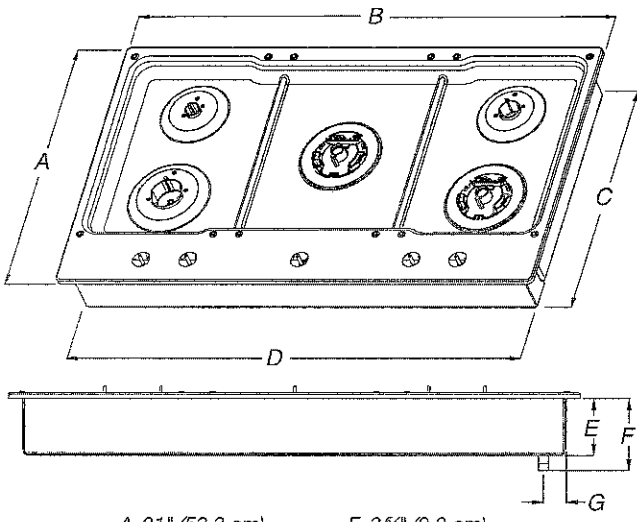
PRODUCT DIMENSIONS

KCGS550ESS and KCGS950ESS Models



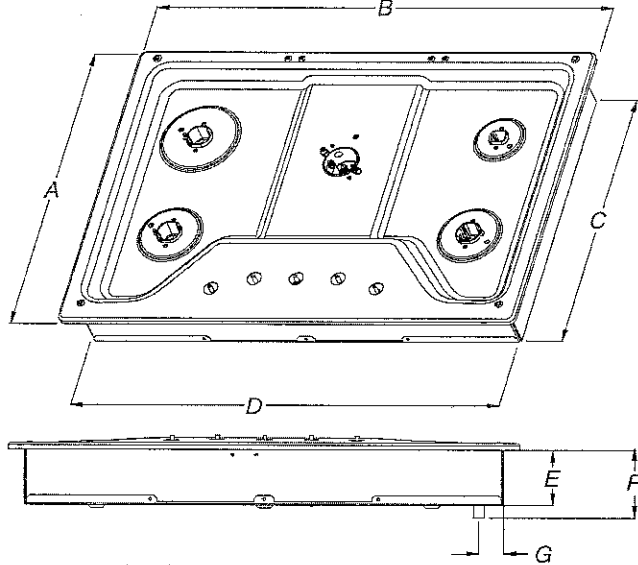
- A. 21" (53.3 cm)
- B. 30" (76.2 cm)
- C. 19 7/8" (49.2 cm)
- D. 28 3/4" (72.1 cm)
- E. 3 3/8" (9.2 cm)
- F. 4 9/16" (11.6 cm)
- G. 1 3/8" (3.4 cm)

KCGS556ESS and KCGS956ESS Models



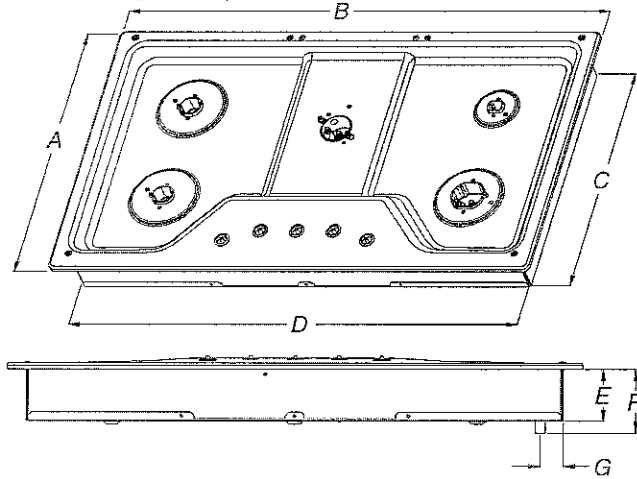
- A. 21" (53.3 cm)
- B. 36 1/4" (92.0 cm)
- C. 19 7/8" (49.2 cm)
- D. 34 3/8" (88.1 cm)
- E. 3 3/8" (9.2 cm)
- F. 4 9/16" (11.6 cm)
- G. 1 7/8" (3.6 cm)

All Other 30" (76.2 cm) Models



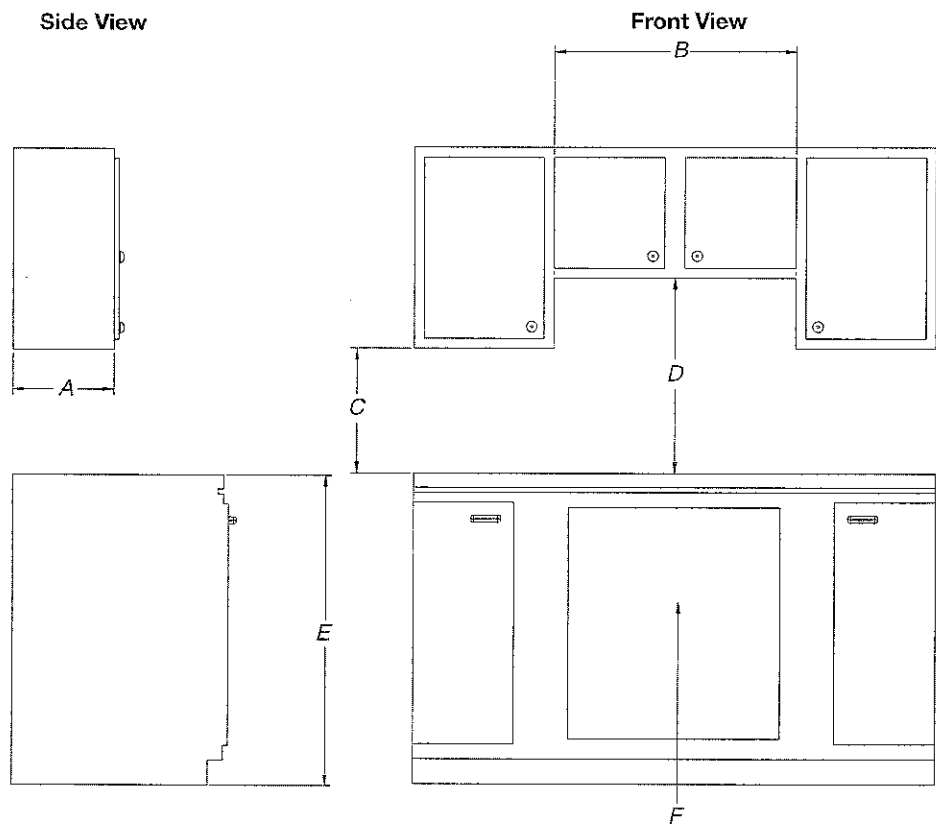
- A. 21" (53.3 cm)
- B. 30" (76.2 cm)
- C. 18 7/8" (48.0 cm)
- D. 28 3/4" (72.1 cm)
- E. 3 3/8" (8.6 cm)
- F. 4 1/8" (10.5 cm)
- G. 1 1/2" (3.8 cm)

All Other 36" (91.4 cm) Models



- A. 21" (53.3 cm)
- B. 36" (91.4 cm)
- C. 18 7/8" (48.0 cm)
- D. 33 3/4" (85.7 cm)
- E. 3 3/8" (8.6 cm)
- F. 4 1/8" (10.5 cm)
- G. 1 1/2" (3.8 cm)

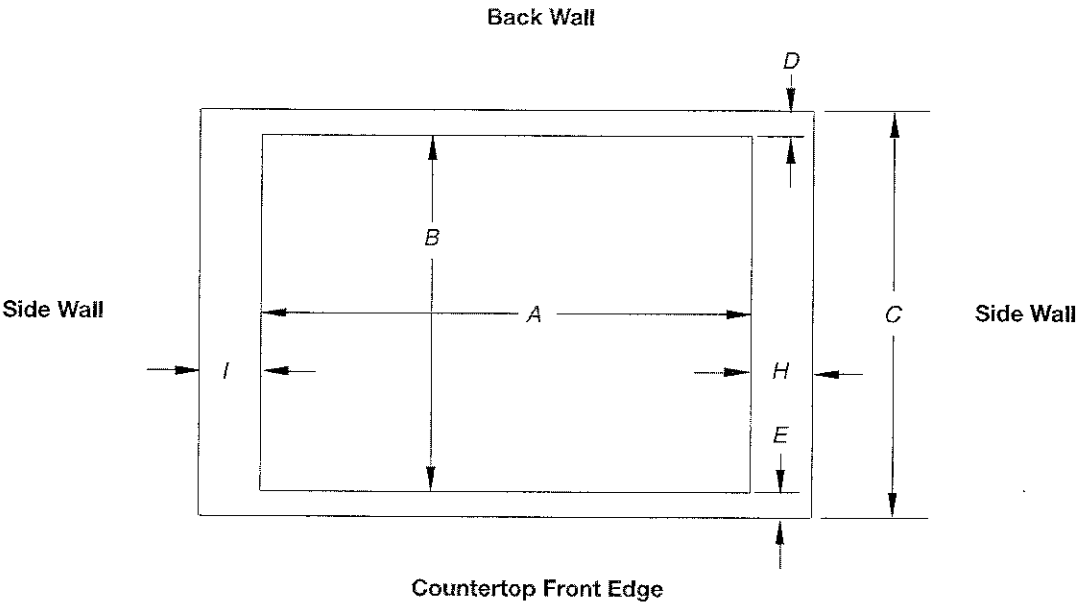
CABINET DIMENSIONS



- A. 13" (33.0 cm) recommended upper cabinet depth.
- B. 30" (76.2 cm) for 30" models; 36" (91.4 cm) for 36" models.
- C. 18" (45.7 cm) minimum clearance from upper cabinet to countertop within minimum horizontal clearances to cooktop.
- D. 30" (76.2 cm) minimum clearance between top of cooktop platform and bottom of uncovered wood or metal cabinet. 24" [61 cm] minimum clearance if bottom of wood or metal cabinet is covered by not less than ¼" [0.6 cm] flame retardant millboard covered with not less than No. 28 MSG sheet steel, 0.015" [0.04 cm] stainless steel, or 0.024" [0.06 cm] aluminum or 0.020" [0.05 cm] copper
- E. 36" (91.4 cm) top of countertop to floor.
- F. Gas line opening - Wall: anywhere 5" (12.7 cm) below underside of countertop. Cabinet floor: anywhere within 6" (15.2 cm) of rear wall is recommended.



CABINET DIMENSIONS (cont.)



Cutout (Product Opening) Dimensions						
30" (76.2 cm) Models						
Models	A			B		
	Min	Recommended	Max	Min	Recommended	Max
KCGS550 and KCGS950	28 1/2" (72.4 cm)	28 7/8" (73.4 cm)	29 5/8" (74.3 cm)	19 1/2" (49.5 cm)	19 13/16" (50.2 cm)	20" (50.8 cm)
All Other 30" (76.2 cm) Models	28 1/2" (72.4 cm)	28 7/8" (73.4 cm)	29 5/8" (74.3 cm)	19" (48.3 cm)	19 1/2" (49.5 cm)	20" (50.8 cm)
36" (91.4 cm) Models						
KCGS556 and KCGS956	34 7/8" (88.4 cm)	35 9/16" (89.4 cm)	35 5/8" (90.3 cm)	19 1/2" (49.5 cm)	19 13/16" (50.2 cm)	20" (50.8 cm)
All Other 36" (91.4 cm) Models	33 7/8" (86.0 cm)	34 9/16" (87.0 cm)	35 1/4" (89.5 cm)	19" (48.3 cm)	19 1/2" (49.5 cm)	20" (50.8 cm)

Side Walls (Combustible Surfaces)	
Models	H and I
KCGS5 and KCGS9	H and I added together must be at least 48" (122.0 cm), with each side individually being at least 8" (20.3 cm).
KCGS350, KCGS356, MGC9536, WCG97US0, WCG97US6	H and I added together must be at least 48" (122.0 cm), with each side individually being at least 12" (30.5 cm).
All Other Models	Both have to be 8" (20.3 cm) or more.

Back Wall and Countertop Front Dimensions			
Models	C	D	E
KCGS550 and KCGS950	25" (63.5 cm)	2 3/8" (7.3 cm)	2 3/4" (6.9 cm)
All Other Models			3 1/8" (7.9 cm)

**NOTES:** After making the countertop cutout, some installations may require notching down the base cabinet side walls to clear the cooktop base. To avoid this modification, use a base cabinet with sidewalls wider than the cutout.

If cabinet has a drawer, a 4" (10.2 cm) depth clearance from the countertop to the top of the drawer (or other obstruction) in base cabinet is required. The drawer depth may need to be shortened to avoid interfering with the regulator.

**IMPORTANT:** If a built-in wall oven is to be installed below this cooktop, the grounded outlet and gas supply piping must be located in an adjacent cabinet.

This cooktop and its gas and electrical supply sources must be installed before the undercounter built-in wall oven is installed.

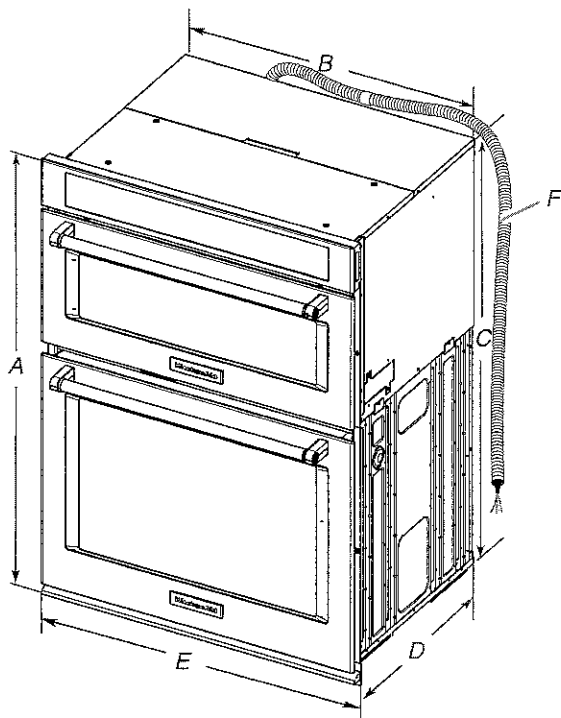
\$ 4879

- Electrical supply junction box should be located 3" (7.6 cm) maximum below the support surface when the oven is installed in a wall cabinet. A 1" (2.5 cm) minimum diameter hole should have been drilled in the left rear corner of the support surface to pass the appliance cable through to the junction box.
- Oven support surface must be solid, level and flush with bottom of cabinet cutout. Floor must be able to support a total weight (microwave and built-in oven) of 208 lbs (95 kg) for 27" (68.6 cm) models or 249 lbs (113 kg) for 30" (76.2 cm) models.

**IMPORTANT:** To avoid damage to your cabinets, check with your builder or cabinet supplier to make sure that the materials used will not discolor, delaminate or sustain other damage. This oven has been designed in accordance with the requirements of UL and CSA International and complies with the maximum allowable wood cabinet temperatures of 194°F (90°C).

**Product Dimensions**

**27" and 30" (68.6 cm and 76.2 cm) Ovens**

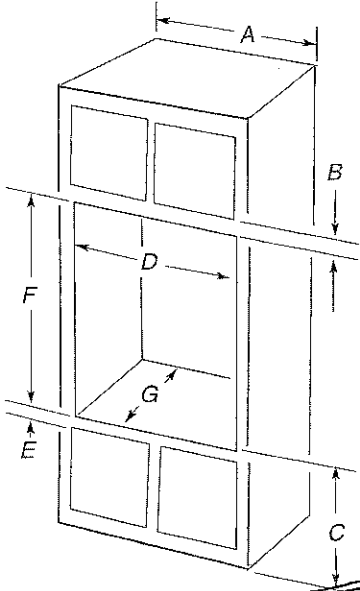


- 27" (68.6 cm) models**
- A. 42 9/16" (108.0 cm) overall height
  - B. 25 7/16" (64.6 cm) recessed width
  - C. 41" (104.1 cm) recessed height
  - D. 23 1/4" (59.1 cm) max. recessed depth
  - E. 27" (68.6 cm) overall width
  - F. 48" (121.9 cm) flexible conduit length measured from the conduit clamp located at the rear of the oven. Do not remove the conduit clamp.

- 30" (76.2 cm) models**
- A. 42 9/16" (108.0 cm) overall height
  - B. 28 7/16" (72.2 cm) recessed width
  - C. 41" (104.1 cm) recessed height
  - D. 23 1/4" (59.1 cm) max. recessed depth
  - E. 30" (76.2 cm) overall width
  - F. 48" (121.9 cm) flexible conduit length measured from the conduit clamp located at the rear of the oven. Do not remove the conduit clamp.

**Cabinet Dimensions**

**27" and 30" (68.6 cm and 76.2 cm) Ovens**



**27" (68.6 cm) models**

- A. 27" (68.6 cm) min. cabinet width
- B. 1" (2.5 cm) top of cutout to bottom of upper cabinet door
- C. 19 1/4" (48.9 cm) bottom of cutout to floor is recommended. 4"-19 1/4" (10.2-48.9 cm) bottom of cutout to floor is acceptable.
- D. 25 1/2" (64.8 cm) cutout width
- E. 1 1/2" (3.8 cm) min. bottom of cutout to top of cabinet door
- F. 41 5/8" (105 cm)\* recommended cutout height
- G. 24" (60.7 cm) cutout depth

**30" (76.2 cm) models**

- A. 30" (76.2 cm) min. cabinet width
- B. 1" (2.5 cm) top of cutout to bottom of upper cabinet door
- C. 19 1/4" (48.9 cm) bottom of cutout to floor is recommended. 4"-19 1/4" (10.2-48.9 cm) bottom of cutout to floor is acceptable.
- D. 28 1/2" (72.4 cm) cutout width
- E. 1 1/2" (3.8 cm) min. bottom of cutout to top of cabinet door
- F. 41 5/8" (105 cm)\* recommended cutout height
- G. 24" (60.7 cm) cutout depth

**\*NOTE:** The cutout height can be between 41" and 41 1/2" (104.1 cm and 105.6 cm) for microwave/oven combination.

**Electrical Requirements**

If codes permit and a separate ground wire is used, it is recommended that a qualified electrical installer determine that the ground path and wire gauge are in accordance with local codes.

Check with a qualified electrical installer if you are not sure the oven is properly grounded.

This oven must be connected to a grounded metal, permanent wiring system.

Be sure that the electrical connection and wire size are adequate and in conformance with the National Electrical Code, ANSI/NFPA 70-latest edition or CSA Standards C22.1-94, Canadian Electrical Code, Part 1 and C22.2 No. O-M91-latest edition, and all local codes and ordinances.

A copy of the above code standards can be obtained from:

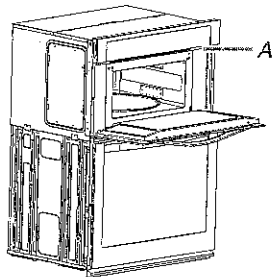
National Fire Protection Association  
 1 Batterymarch Park  
 Quincy, MA 02169-7471

CSA International  
 8501 East Pleasant Valley Road  
 Cleveland, OH 44131-5575

Electrical Connection

To properly install your oven, you must determine the type of electrical connection you will be using and follow the instructions provided for it here.

- Oven must be connected to the proper electrical voltage, amperage, and frequency as specified on the model/serial/ rating plate. See the following illustration.



A. Model/serial/rating plate

- Models rated from 7.3 to 9.6 kW at 240 volts (5.4 to 7.4 kW at 208 volts) require a separate 40-amp circuit. Models rated at 4.8 kW and below at 240 volts (3.6 kW and below at 208 volts) require a separate 30-amp circuit.
- A circuit breaker is recommended.
- Connect directly to the fused disconnect (or circuit breaker box) through flexible, armored or nonmetallic sheathed, copper cable (with grounding wire). See “Make Electrical Connection” section.

- Flexible conduit from the oven should be connected directly to the junction box.
- Do not cut the conduit. The length of conduit provided is for serviceability of the oven.
- A UL listed or CSA approved conduit connector must be provided.
- If the house has aluminum wiring, follow the procedure below:

1. Connect a section of solid copper wire to the ends of the flexible conduit leads.
2. Connect the aluminum wiring to the added section of copper wire using special connectors and/or tools designed and UL listed for joining copper to aluminum.

Follow the electrical connector manufacturer's recommended procedure. Aluminum/copper connection must conform with local codes and industry accepted wiring practices.

For power requirements, refer to the following table.

Model	Voltage	Amperage (L1)*	Amperage (L2)*	Rating (W)
KOCE507E/ KOCE500E	120/240	32	30	8000
KOCE507E/ KOCE500E	120/208	30	28	6600

\*Amperage values noted above are for information purposes only: The units are rated in watts.

INSTALLATION INSTRUCTIONS

Prepare Built-In Microwave/Oven Combination

1. Decide on the final location for the oven. Locate existing wiring to avoid drilling into or severing wiring during installation.

**⚠ WARNING**

**Excessive Weight Hazard**

Use two or more people to move and install oven.

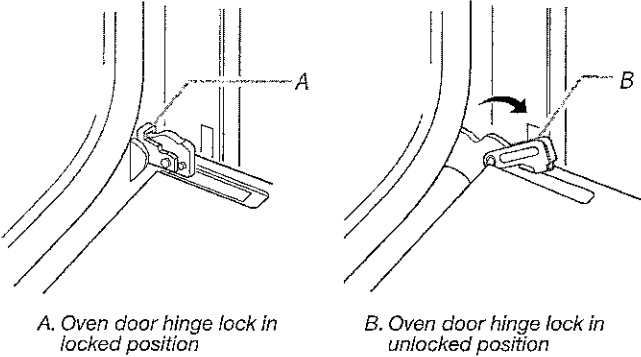
Failure to do so can result in back or other injury.

2. To avoid floor damage, set the oven onto cardboard prior to installation. Do not use handle or any portion of the front frame for lifting.
3. Remember to remove bottom vent from the foam packing on top of oven.
4. Remove the shipping materials and tape from the oven.
5. Remove the hardware package from inside the bag containing literature.
6. Remove and set aside racks and other parts from inside the oven.
7. Move oven and cardboard close to the oven's final location.

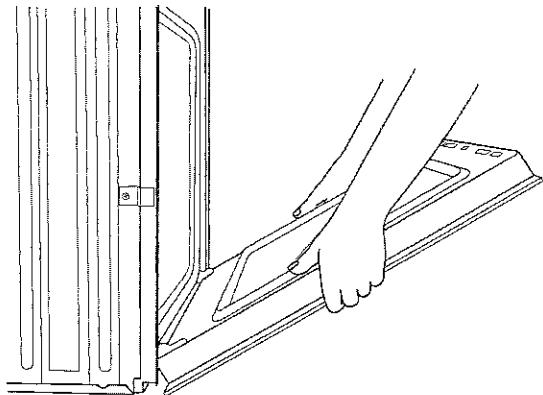
Remove Oven Door(s)

IMPORTANT: Use two hands to remove oven door.

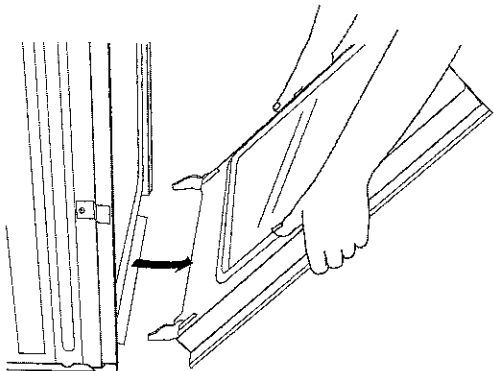
1. Prior to removing the oven door, prepare a surface where you will place it. This surface should be flat and covered with a soft blanket, or use the corner posts from your packaging material.
2. Open the oven door.
3. Locate the oven door hinge locks in both corners of the oven door, and then rotate the hinge locks toward the oven door to the unlocked position. If the door hinge lock is not rotated fully (see illustration B), the door will not remove properly.



- Partially close the door to engage the door latch locks. The door will stop at this point.



- Using two hands, grasp the edges of the oven door. Lift and pull the oven door toward you and remove. You may need to gently shift door from side to side as you pull.

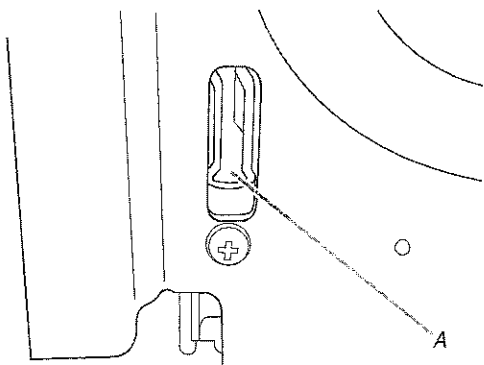


- Set the oven door(s) aside on the prepared covered work surface, with the oven door resting on its handle.
- To continue with the oven installation, go to the "Make Electrical Connection" section.

### Replace Oven Door(s)

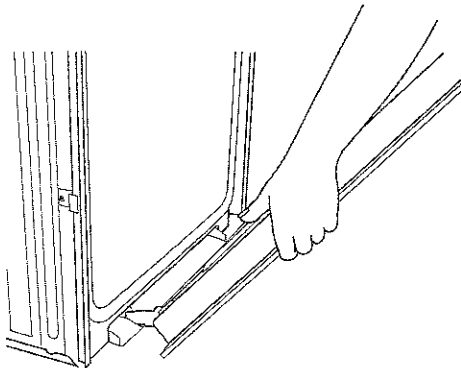
**IMPORTANT:** Do not replace the oven door(s) until after the oven has been installed into the cabinet.

- Using two hands, grasp side edges of door at the midpoint. Face the oven cavity.
- Locate the slots on each side of the oven cavity for the door hinge locks.



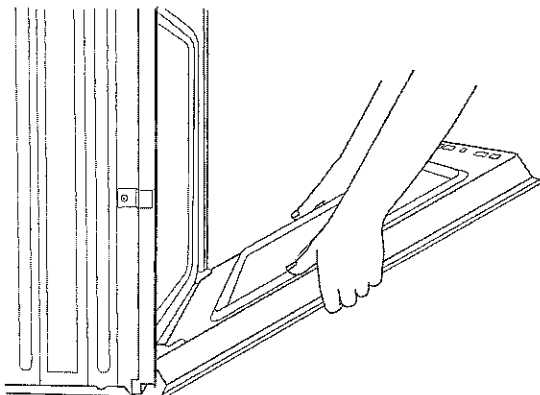
A. Slot in the oven cavity for door hinge lock

- At a 45° angle, align door hinges with slots in the lower front of the oven cavity. Slowly insert door, making sure you maintain the 45° angle. You will know the door is engaged in the slot when you feel a slight drop.



- Lower the oven door to the fully open position. If the oven door does not open to a full 90°, repeat steps 1 through 3.
- Locate the oven door hinge locks in the corners of the oven door, and rotate the hinge locks toward the oven cavity to the locked position.

See Step 3 (illustration A) in the "Remove Oven Door(s)" section for proper locked position.



- Close the oven door.
- When the hinges are properly installed and the door closed, there should be an even gap between the door and the control panel. If one side of the oven door is hanging lower than the other, the hinge on that side is not properly installed.