

Brampton Encore - 68 - 2 - 41-6 Elev.A VERDI OPT - OPTG
CENTRAL VAC AND WIRING

Inv.1,355	1 - THRU OUT: CAT 6 WIRING - UPGRADE AN OUTLET TO CAT 6- -PACKAGE OF 4
Line21331	Note:
11May17 / 19Jun17	
Inv.1,355	1 - SECURITY UPGRADE PACKAGE: 1 X KEYPAD ON 2ND FLOOR, 1X MOTION DETECTOR ON 2ND FLOOR, 1 X GLASSBREAK ON MAIN FLOOR, 1 X MOISTURE SENSOR IN BASEMENT
Line21330	Note:
11May17 / 19Jun17	
Inv.1,355	1 - FAMILY ROOM: CONDUIT PIPE- FOR TELEVISION- LOCATE APPROX. 66" A.F.F. ABOVE FIREPLACE, TERMINATING BY CABLE OUTLET. SEE PLAN FOR LOCATION.
Line21332	Note:
11May17 / 19Jun17	
Inv.1,355	1 - DEN: FIBRE OPTIC WIRE. SEE PLAN FOR LOCATION
Line21364	Note:
11May17 / 19Jun17	

CONCRETE AND DRAIN

Inv.1,355	1 - ROUGH-IN - 3PC BASEMENT ROUGH-IN
Line22660	Note:
11May17 / 19Jun17	
Inv.1,355	1 - BASEMENT: BACK-FLOW PREVENTER VALVE
Line22661	Note:
11May17 / 19Jun17	

ELECTRICAL

Inv.1,355	1 - FAMILY ROOM: 110V WALL RECEPTACLE ON NORMAL CIRCUIT- LOCATE APPROX. 66" A.F.F. ABOVE FIREPLACE FOR FUTURE TV
Line21333	Note:
11May17 / 19Jun17	
Inv.1,355	1 - BASEMENT: 200 AMP ELECTRICAL SERVICE
Line21334	Note:
11May17 / 19Jun17	
Inv.1,355	1 - KITCHEN: 240V/40AMP WALL RECEPTICAL ON DEDICATED CIRCUIT- FOR 4 WIRE BUILT-IN WALL OVEN - SEE PLAN FOR LOCATION
Line21335	Note:
11May17 / 19Jun17	
Inv.1,355	1 - ADDITIONAL STANDARD FIXTURE ON SAME SWITCH
Line21336	Note:
11May17 / 19Jun17	
Inv.1,355	1 - KITCHEN: MOVE STANDARD CEILING LIGHT TO APPROX. CENTER ABOVE ISLAND.
Line21337	Note:
11May17 / 19Jun17	
Inv.1,355	2 - KITCHEN: CAPPED CEILING LIGHT - LOCATE ABOVE ISLAND, USE SAME SWITCH AS STANDARD
Line21338	Note:
11May17 / 19Jun17	

Brampton Encore - 68 - 2 - 41-6 Elev.A VERDI OPT - OPTG

Inv.1,355	1 - KITCHEN: POT LIGHT: 4 INCH HALOGEN POT LIGHT - 440 WH- PRICED PER LIGHT- 1-9 POTLIGHTS
Line21339	Note: SEE PLAN FOR LOCATION.
11May17 / 19Jun17	
Inv.1,355	1 - KITCHEN: SINGLE POLE SWITCH for potlight
Line21340	Note:
11May17 / 19Jun17	
Inv.1,355	1 - FAMILY ROOM: POT LIGHT: 4 INCH HALOGEN POT LIGHT - 440 WH- PRICED PER LIGHT- 1-9 POTLIGHTS
Line21341	Note: SEE PLAN FOR LOCATION
11May17 / 19Jun17	
Inv.1,355	1 - FAMILY ROOM: SINGLE POLE SWITCH FOR POTLIGHT
Line21342	Note:
11May17 / 19Jun17	
Inv.1,355	2 - GARAGE: ADD ELECTRICAL IN CIELING FOR FUTURE GARAGE DOOR OPENER
Line21350	Note:
11May17 / 19Jun17	
Inv.1,355	1 - KITCHEN: NOTE LOCATION OF ELECTRICAL FOR BUILT-IN FRIDGE
Line21358	Note: SEE ATTACHED SPECS
11May17 / 19Jun17	
Inv.1,355	1 - KITCHEN: GAS LINE ROUGH - MAIN FLOOR - (3 STOREY MODELS) INCLUDES ELECTRICAL
Line22664	Note:
11May17 / 19Jun17	

Exterior Colours

Inv.1,355	1 - Exterior Package 9
Line22658	Note:
11May17 / 19Jun17	

FORMING

Inv.1,355	1 - BASEMENT: COLD CELLAR
Line21347	Note:
11May17 / 19Jun17	

FRAMING

Inv.1,355	1 - KITCHEN: UPGRADE VENTING FOR STOVE TO 10" PIPE INTERIOR WALL - ACCOMODATED TO FIT STANDARD RANGE HOOD
Line22659	Note:
11May17 / 19Jun17	
Inv.1,355	1 - MAIN FLOOR: STANDARD DOOR EXTENDED HEIGHT 96" (PRICE PER DOOR) MAIN FLOOR 3 STOREY MODELS - INCLUDE FRAMING NOTE 96"
Line22662	Note:
11May17 / 19Jun17	
Inv.1,355	1 - MAIN FLOOR: EXTENDED HEIGHT ARCHWAY (PRICE PER DOORWAY) -INCLUDE FRAMING NOTE -96"
Line22663	Note:
11May17 / 19Jun17	

HVAC

Brampton Encore - 68 - 2 - 41-6 Elev.A VERDI OPT - OPTG

Inv.1,355	1 - KITCHEN: GAS LINE ROUGH - MAIN FLOOR - (3 STOREY MODELS) INCLUDES ELECTRICAL
Line21343	Note:
11May17 / 19Jun17	
Inv.1,355	1 - KITCHEN: UPGRADE VENTING FOR STOVE TO 10" PIPE INTERIOR WALL - ACCOMODATED TO FIT STANDARD RANGE HOOD
Line21344	Note:
11May17 / 19Jun17	
Inv.1,355	1 - REAR DECK: RELOCATE STANDARD BBQ LINE TO UPPER DECK (OFF BREAKFAST ROOM)
Line21363	Note:
11May17 / 19Jun17	

INTERIOR TRIM AND DOORS

Inv.1,355	5 - MAIN FLOOR: STANDARD DOOR EXTENDED HEIGHT 96" (PRICE PER DOOR) MAIN FLOOR 3 STOREY MODELS - INCLUDE FRAMING NOTE 96"
Line21353	Note:
11May17 / 19Jun17	
Inv.1,355	6 - MAIN FLOOR: EXTENDED HEIGHT ARCHWAY (PRICE PER DOORWAY) -INCLUDE FRAMING NOTE -96"
Line21354	Note:
11May17 / 19Jun17	

MISC.

Inv.1,355	1 - GRADE DOES NOT PERMIT SIDEDOOR TO HOUSE - SEE PE: 1400 FOR CREDIT
Line21346	Note:
11May17 / 19Jun17	
Inv.1,355	1 - Purchaser has attended an appointment at the Decor Centre & has DECLINED any additional upgrades and accepts and acknowledges that there will be no further changes/additions/deletions to be made upon signing on May 11 2017.
Line21359	Note:
11May17 / 19Jun17	
Inv.1,355	1 - BONUS PACKAGE: \$10,000.00 (INCLUDING TAXES) WORTH OF UPGRADES FROM GOLD PARK HOMES DÉCOR CENTRE IS BEING APPLIED TOWARD THE STRUCTURAL ORDER. BALANCE OF \$0.00 REMAINING
Line21361	Note:
11May17 / 19Jun17	

PLUMBING

Inv.1,355	1 - KITCHEN: ROUGH-IN - WATERLINE FOR FRIDGE
Line21348	Note:
11May17 / 19Jun17	
Inv.1,355	1 - ROUGH-IN - 3PC BASEMENT ROUGH-IN
Line21349	Note:
11May17 / 19Jun17	
Inv.1,355	1 - BASEMENT: BACK-FLOW PREVENTER VALVE
Line21351	Note:
11May17 / 19Jun17	
Inv.1,355	1 - REAR YARD: UPGRADE HOSE BIB TO HOT/COLD
Line21352	Note:
11May17 / 19Jun17	

Brampton Encore - 68 - 2 - 41-6 Elev.A VERDI OPT - OPTG

PLUMBING FIXTURES

Inv.1,355	1 - MASTER ENSUITE: 3-FUNCTION SHOWER SYSTEM - DELTA ARZO #17T267/50570/T11867/R1100/R10000-UNBXHF (chrome)
Line21355	Note:
11May17 / 19Jun17	

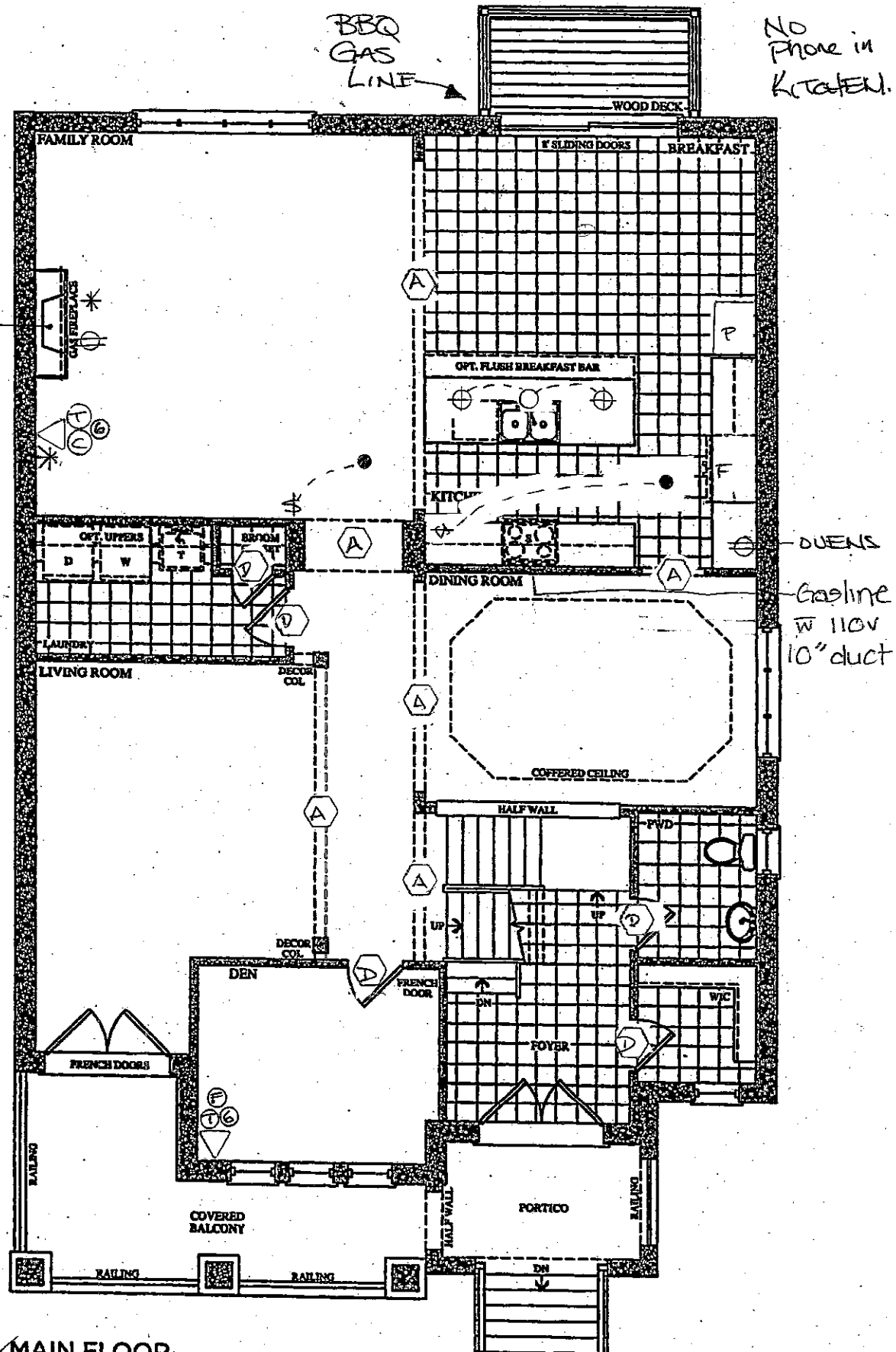
BE2-68

MAY 11 2017

Ve

41' S

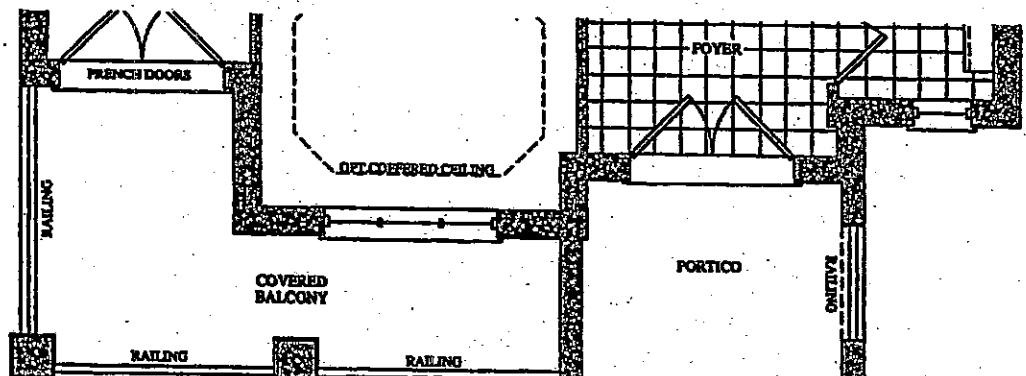
*Elevation A • 3,940 sq.ft. | Elevation B • 3,9



LEGEND

- BTLIGHT
- STD CEILING LIGHT
- ⊕ CAPPED CEILING OUTLET
- ⊕ ELECTRICAL OUTLET
- * CONDUIT
- \$ SINGLE POLE SWITCH
- ① PHONE
- ② CABLE
- ③ FIBER OPTIC
- ④ CAT 6
- ⑤ 96" ARCHWAY
- ⑥ 96" DOOR

MAIN FLOOR ELEVATION A

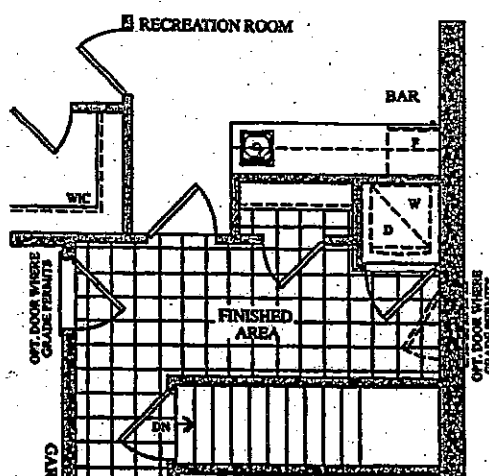
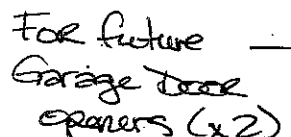


BEZ-68

May 11 2017

41' SE

✓ Elevation A • 3,940 sq.ft. | Elevation ~~B~~ • 3,9



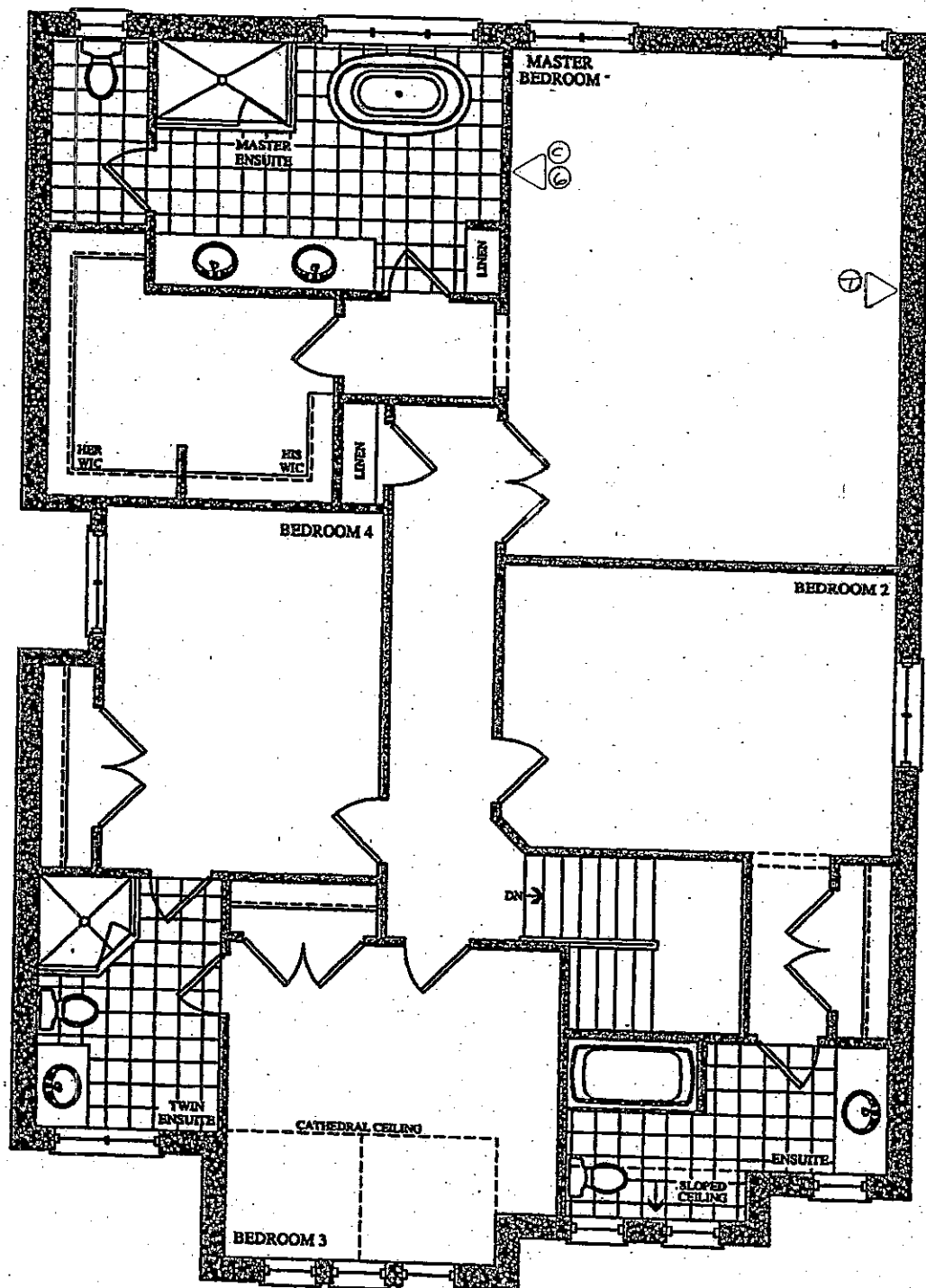
BE-2-68

MAY 11 2017

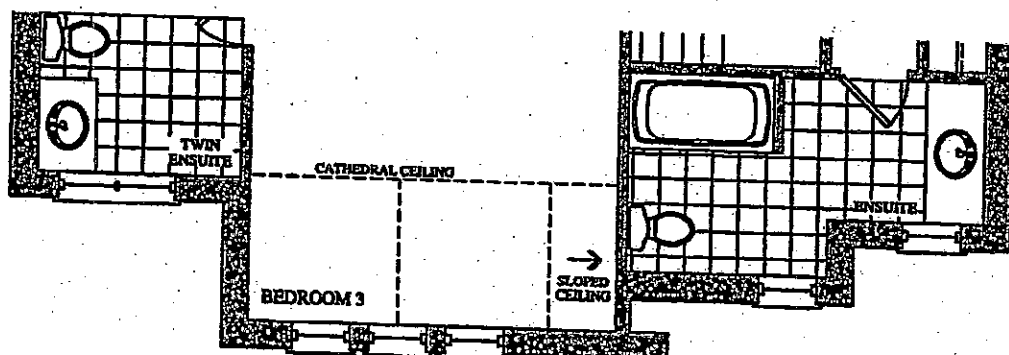


Elevation A • 3,940 sq.ft. | Elevation

4



SECOND FLOOR
ELEVATION A



~~SECOND FLOOR
ELEVATION B~~

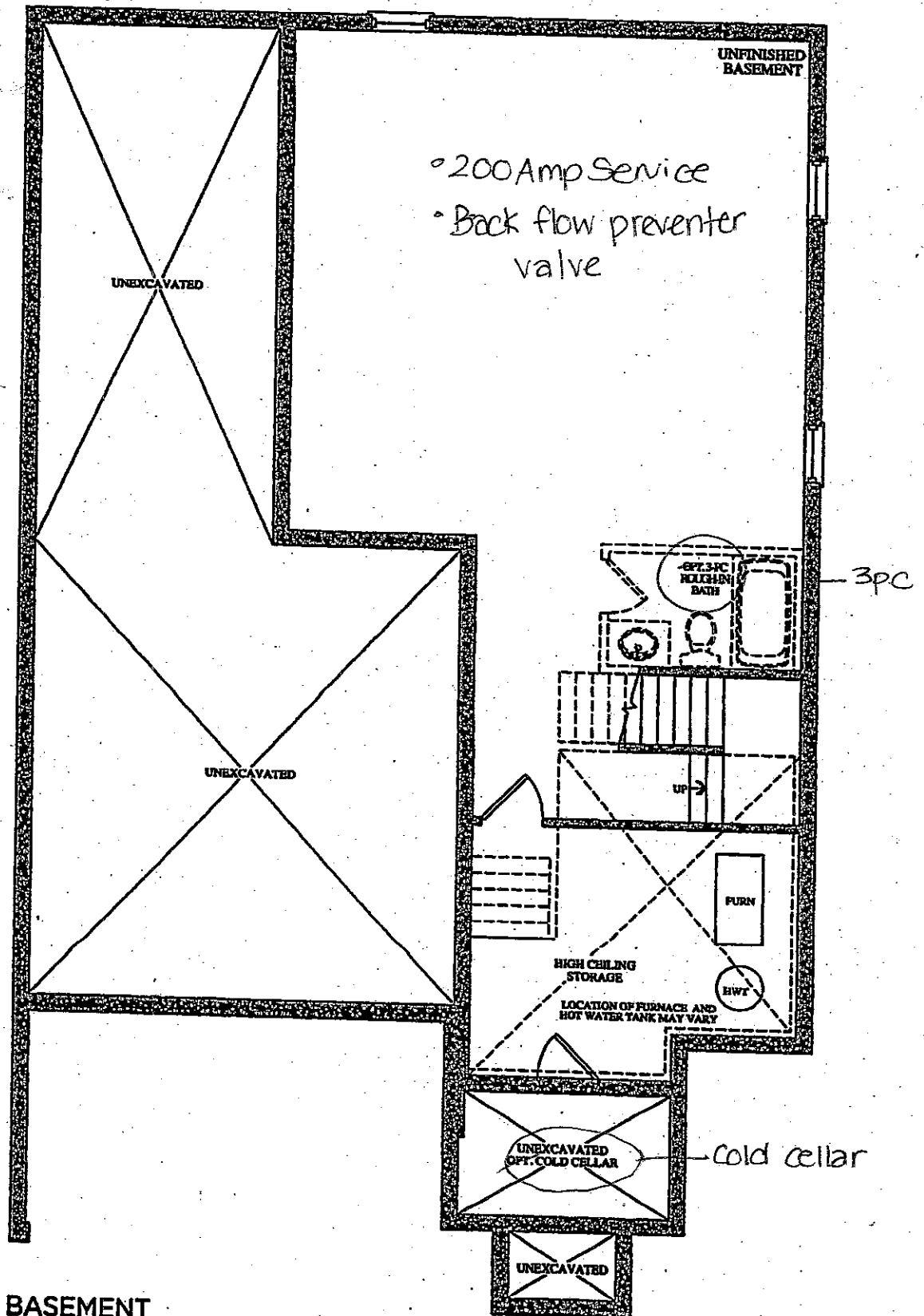
RE2-68

MAY 11 2017



V
41' S

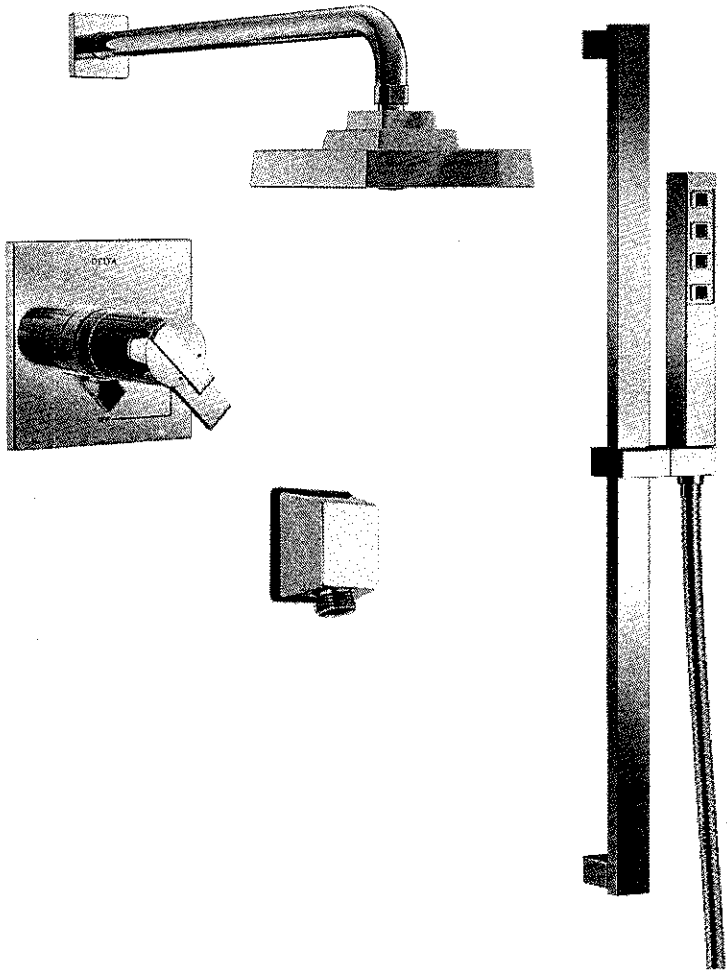
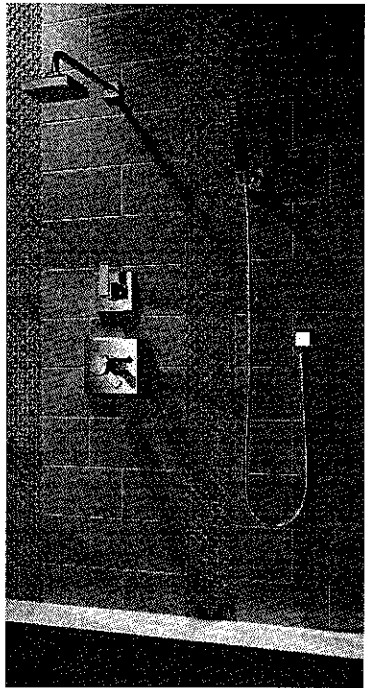
Elevation A • 3,940 sq.ft. | Elevation B • 3




BASEMENT
ELEVATION A

Arzo TempAssure 3 Function Shower System

#T17T267/50570//T11867/R1100/R10000-UNBXHF (chrome)



LOT # BE2-68	
ROOM: MASTER EN suite	SIGNATURE: 
DATE: MAY 11 2017	SIGNATURE:

KitchenAid®

27" (68.6 cm) and 30" (76.2 cm) Electric Built-In Microwave/Oven Combination

PRODUCT MODEL NUMBERS

KEMS309E

KOCE500E

KOCE507E

ELECTRICAL CONNECTION

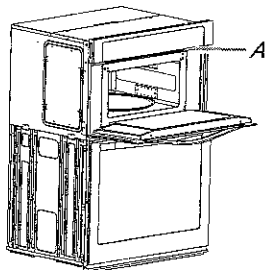
If codes permit and a separate ground wire is used, it is recommended that a qualified electrical installer determine that the ground path and the wire gauge are in accordance with local codes. Check with a qualified electrical installer if you are not sure the oven is properly grounded.

This oven must be connected to a grounded metal, permanent wiring system.

Be sure that the electrical connection and wire size are adequate and in conformance with the National Electrical Code, ANSI/NFPA 70-latest edition or CSA Standards C22.1-94, Canadian Electrical Code, Part 1 and C22.2 No. 0-M91-latest edition, and all local codes and ordinances.

To properly install your oven, you must determine the type of electrical connection you will be using and follow the instructions provided for it here.

- Oven must be connected to the proper electrical voltage and frequency as specified on the model/serial/rating plate. See the following illustration.



A. Model/serial/rating plate

- Models rated from 7.3 to 9.6 kW at 240 volts (5.4 to 7.4 kW at 208 volts) require a separate 40-amp circuit. Models rated at 4.8 kW and below at 240 volts (3.6 kW and below at 208 volts) require a separate 30-amp circuit.
- A circuit breaker is recommended.
- Connect directly to the fused disconnect (or circuit breaker box) through flexible, armored or nonmetallic sheathed, copper cable (with grounding wire). See "Make Electrical Connection" section.
- Flexible conduit from the oven should be connected directly to the junction box.
- Do not cut the conduit. The length of conduit provided is for serviceability of the oven.
- A UL listed or CSA approved conduit connector must be provided.
- If the house has aluminum wiring, follow the procedure below:
 - Connect a section of solid copper wire to the pigtail leads.
 - Connect the aluminum wiring to the added section of copper wire using special connectors and/or tools designed and UL listed for joining copper to aluminum.

Follow the electrical connector manufacturer's recommended procedure. Aluminum/copper connection must conform with local codes and industry accepted wiring practices.

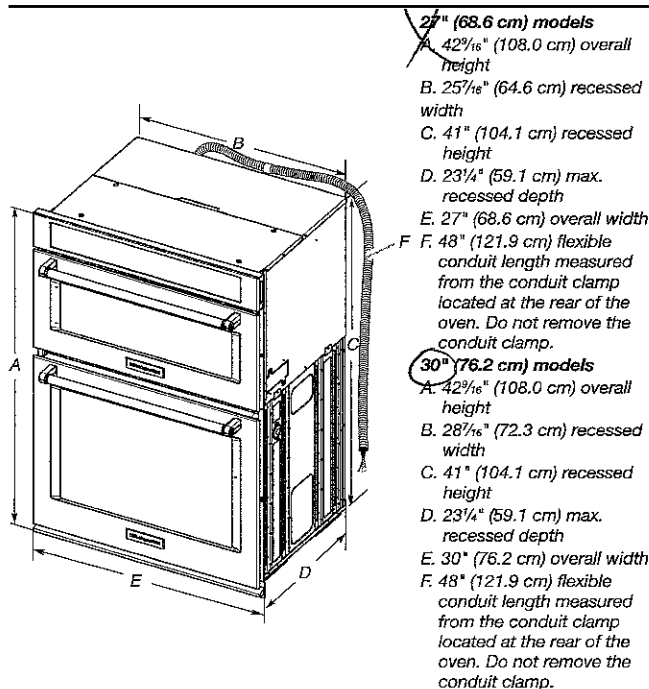
For power requirements, refer to the following table.

Model	Voltage	Amperage (L1)*	Amperage (L2)*	Rating (W)
KOCE507E/KOCE500E	120/240	32	30	8000
KOCE507E/KOCE500E	120/208	30	28	6600

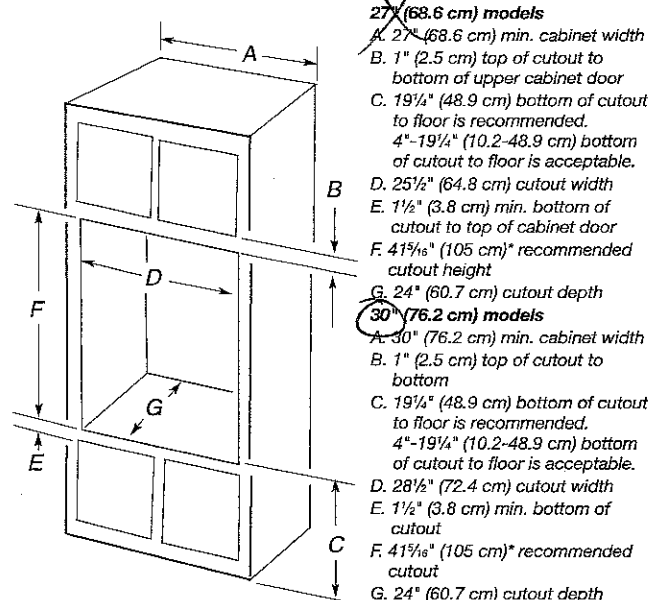
*Amperage values noted above are for information purposes only: the units are rated in watts.

Because Whirlpool Corporation includes a continues commitment to improve our products, we reserve the right to change materials and specifications without notice.

PRODUCT DIMENSIONS



Cabinet Dimensions



* NOTE: The cabinet height can be between 41" (104.1 cm) and 41¹/₂" (105.6 cm) for microwave/oven combination.

NOT FLUSH INSTALLATION

Dimensions are for planning purposes only. For complete details, see Installation Instructions packed with product. Specifications subject to change without notice.

Ref. W10725683B
2/10/15

Convection Element Power (watts)	3200
Convection Element Type	True - Oven
Number of Oven Racks	3
Number of Rack Guides	6

BE2-68



Oven Controls

Convection Functions	Bake, Broil, Roast
Display Color	White
Language Conversion	English/French

Microwave Details

Cooking Power Wattage	900
Convection	Yes
Convection Power Wattage	1600
Door Release	Handle
Door Swing	Drop Down
Grill Power Wattage	1600
Interior Light	Halogen
Turntable	Yes
Turntable Diameter Size	14 1/8

Microwave Controls

Sensor Cooking	Yes - Microwave
----------------	-----------------

Controls

Door Type	Metal & Glass
Flush Installation Approved	Yes
Handle Color	Stainless Steel
Handle Material	Metal
Oven Window Size	Extra Large
Door Removable	Yes

Dimensions

See Dimension Guide for Metric Measurements

Depth	27 1/8
Height	42 1/2
Width	30
Cutout Height	41 3/8
Cutout Width	28 1/2
Interior Depth (in.)	19
Interior Height (in.)	18
Interior Width (in.)	25
Depth With Door Open 90 Degree	46 3/4

KitchenAid®

FOR THE WAY IT'S MADE.®

Undercounter Dishwasher

BEZ-68



PRODUCT MODEL NUMBERS

KDFE104D, KDFE304D, KDTE204D, KDTE404D, KDTE704D, KDTM354D, KDFE204E, KDFE454C, KDTE104E, KDTE204E, KDTE254E, KDTM354E, KDTM384E, KDTM404E, KDTM504E, KDTM704E, KDTM804E

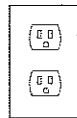
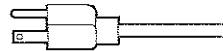
Electrical Requirements: 120-volt, 60 Hz, AC-only, 15- or 20-amp. fused electrical supply. Copper wire only. A time delay fuse or circuit breaker and separate circuit is recommended.

If direct wiring dishwasher: Use flexible, armored or nonmetallic, sheathed copper wire with grounding wire that meets the wiring requirements for your home and local codes and ordinances. Use a UL Listed or CSA Approved conduit connector.

If connecting dishwasher with a power supply cord:

Use power supply cord kit (Part Number 4317824) marked for use with dishwashers. Follow the kit instructions for installing the power supply cord.

Power supply cord must plug into a grounded 3 prong outlet located in the cabinet next to the dishwasher opening. Outlet must meet all local codes and ordinances.



Water Supply Requirements: A hot water line with 20 to 120 psi (138 to 862 kPa) water pressure. Water temperature must be 120°F (49°C) water at dishwasher. Use 3/8" O.D. copper tubing with compression fitting or flexible braided water supply line.

Note: 1/2" minimum plastic tubing is not recommended.

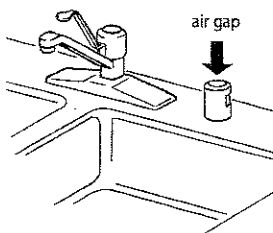
Use a 90° elbow with 3/4" hose connection with rubber washer (Part Number W10273460). Do not solder within 6" (15.2 cm) from water inlet valve.

Drain Requirements: A new drain hose is supplied with your dishwasher. If this is not long enough, use a new drain hose with a maximum length of 12' (3.7 m) (Part Number 3385556) that meets all current AHAM/IAPMO test standards, is resistant to heat and detergent, and fits the 1" (2.5 cm) drain connector of the dishwasher.

Make sure to connect the drain hose to waste tee or disposer inlet above drain trap in house plumbing and 20" (50.8 cm) minimum above the floor. It is recommended

that the drain hose either be looped up and securely fastened to the underside of the counter or be connected to an air gap.

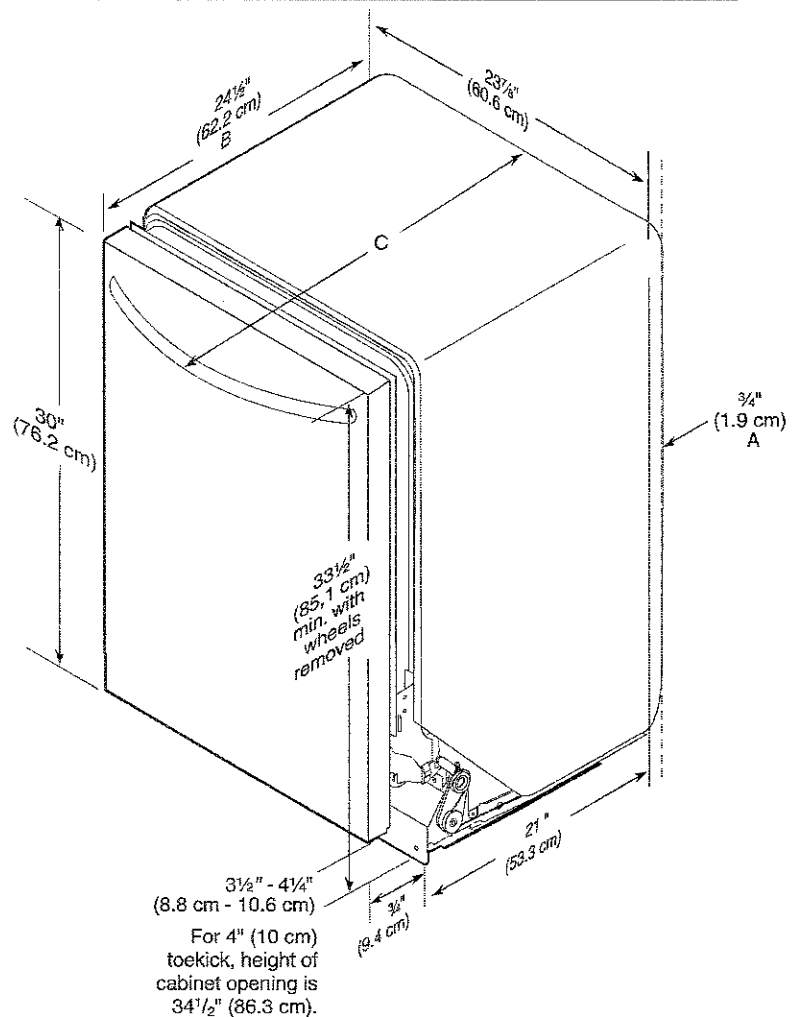
Make sure to use an air gap if the drain hose is connected to house plumbing lower than 20" (50.8 cm) above subfloor or floor.



Use 1/2" (1.3 cm) minimum I.D. drain line fittings.

If required, the air gap should be installed in accordance with the air gap installation instructions. When connecting the air gap, a rubber hose (not provided) will be needed to connect to the waste tee or disposer inlet.

PRODUCT DIMENSIONS



A. Insulation may be compressed (not used on all models).

B. For panel-ready models, dishwasher depth is 24" (60 cm) not including the 3/4" (1.9 cm) custom door panel.

C. Door handles may protrude forward of the face of the dishwasher; varies by model.

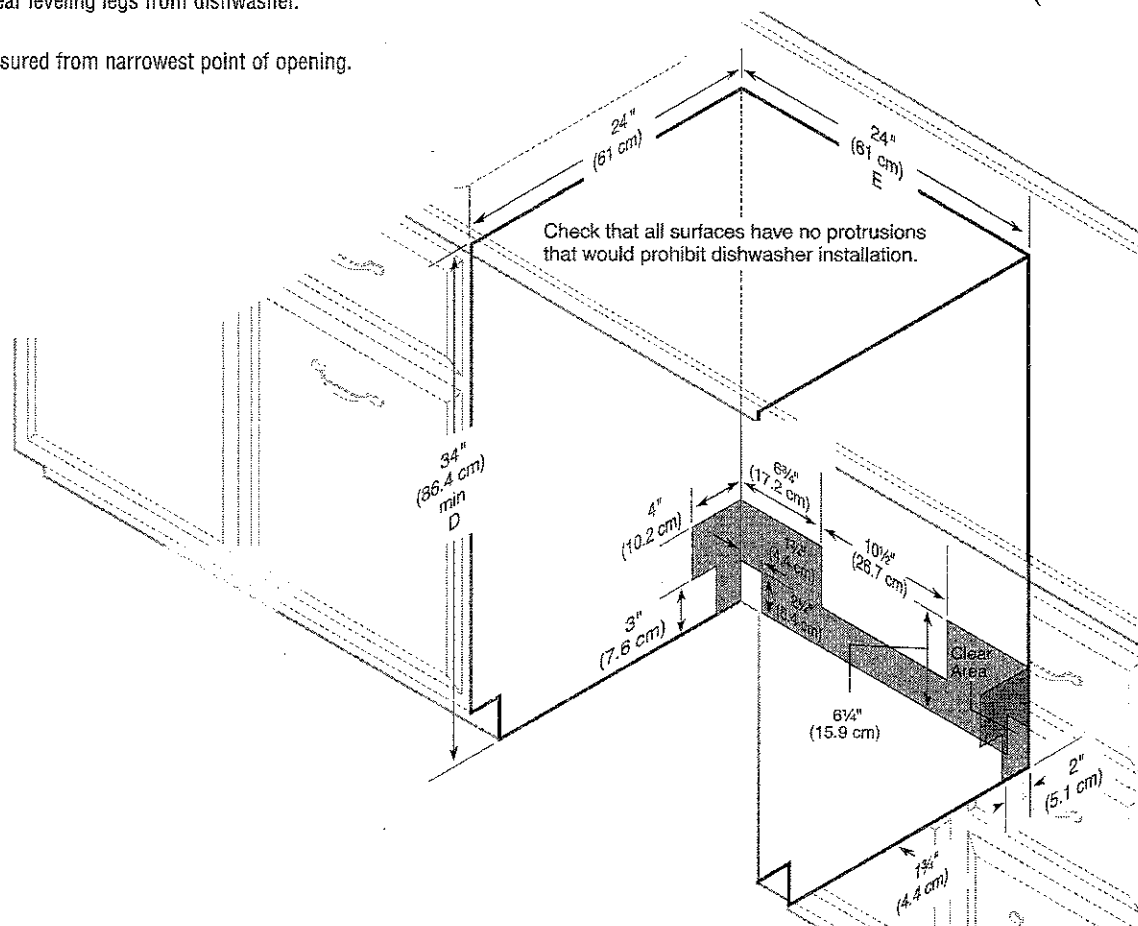
CABINET CUTOUT DIMENSIONS

BEZ-68

NOTE: Shaded areas of cabinet walls show where utility connections may be installed.

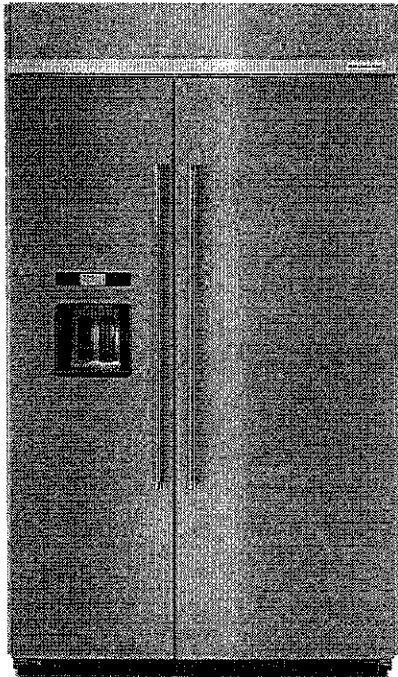
*Measure from the lowest point on the underside of the countertop. May be reduced to 33½" (85.1 cm) by removing the rear leveling legs from dishwasher.

**Minimum, measured from narrowest point of opening.



BE 2-68

KitchenAid®



NEW

29.5 cu. ft 48-Inch Width Built-In Side by Side Refrigerator with PrintShield™ Finish

4.6

71 Reviews | Write a Review

This versatile 29.5 Cu. ft built-in refrigerator features the ExtendFresh™ Plus Temperature Management System, which maintains the perfect temperature for fresh ingredients. The Produce Preserver extends freshness by neutralizing the over-ripening effects of ethylene emitted by certain fruits and vegetables. It also features PrintShield™ Finish, a fingerprint resistant finish, which protects against smudges and enhances the look of the refrigerator.

AVAILABLE COLOR OPTIONS



PrintShield Stainless - KBSD608ESS

SPECIFICATIONS

Performance

Refrigerator Type	Side-by-Side
Freezer Capacity	10.30
Refrigerator Capacity	19.22
Energy Star® Qualified	ENERGY STAR® Qualified
CEE Tier	Tier I
Star K Compliant	Sabbath Mode

Product Dimensions

Dimensions are for planning purposes only. For complete information, visit owner center.

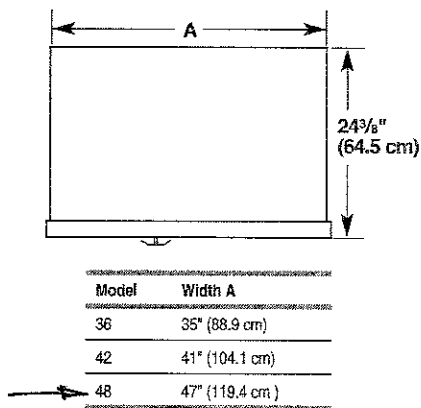
Dimensions

See Dimension Guide for Metric Measurements

Height	83 3/8
Depth	27 3/4
Width	48 1/4
Cutout Depth	24
Cutout Height	83 1/2
Cutout Width	47 1/2
Height To Top Of Cabinet	83 3/8
Depth With Door Open 90 Degree	51 3/8
Depth Excluding Doors	24 1/8
Depth Closed Excluding Handles	24 3/8
Width with Doors Closed	48 1/4

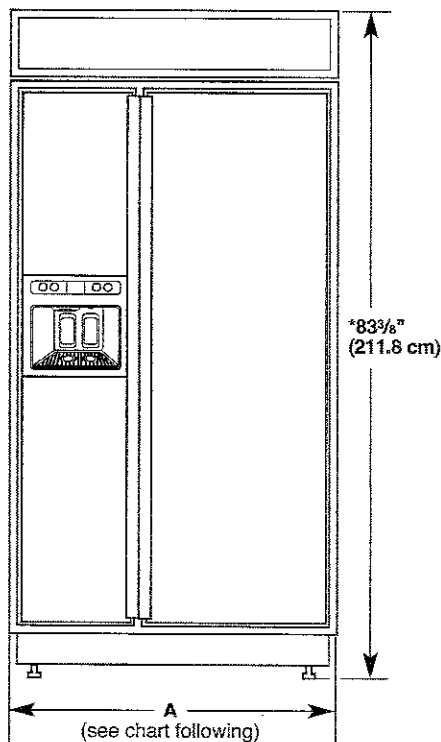
BE2-68

TOP VIEW



FRONT VIEW

- Width dimensions were measured from trim edge to trim edge.
- Height dimensions are shown with leveling legs extended $\frac{1}{8}"$ (3 mm) below the rollers.



Model	Width A (Trim edge to trim edge)
36	$36\frac{1}{32}"$ (92.3 cm)
42	$42\frac{1}{32}"$ (107.5 cm)
48	$48\frac{1}{32}"$ (122.8 cm)

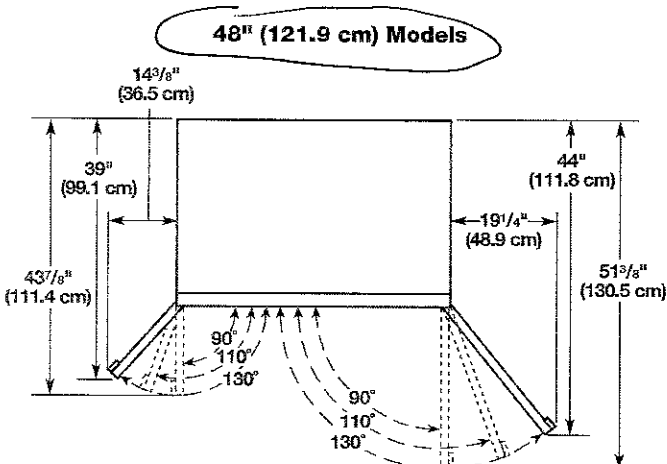
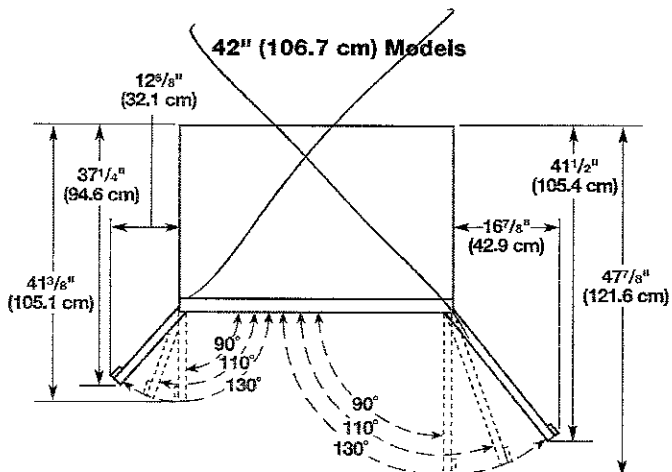
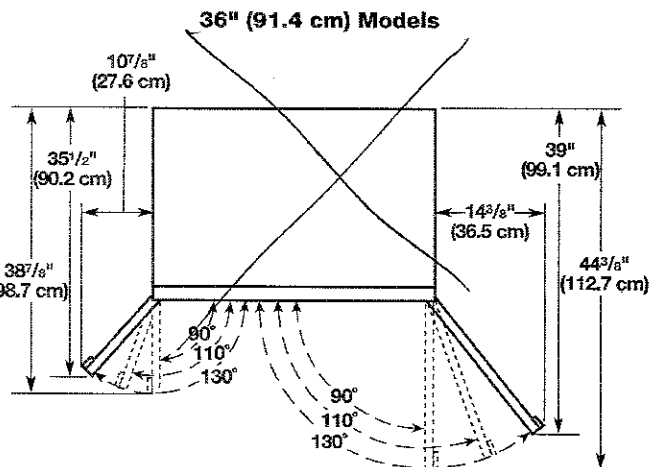
*When leveling legs are fully extended to $1\frac{1}{4}"$ (3.2 cm) below rollers, add $1\frac{1}{8}"$ (2.9 cm) to the height dimensions.

DOOR SWING DIMENSIONS

The location must permit both doors to open to a minimum of 90°. Allow 5" (12.7 cm) minimum space between the side of the refrigerator and a corner wall.

NOTE: More clearance may be required if you are using overlay panels, custom handles, or extended handles on a Classic model.

To adjust the door swings, see "Adjust Doors."





PRODUCT MODEL NUMBERS

KBSD602E KBSD606E **KBSD608E** KBSN602E KBSN608E
KBSD612E KBSD618E

Electrical: A 115 volt, 60 Hz., AC only, 15- or 20-amp fused, grounded electrical supply is required. It is recommended that a separate circuit serving only your refrigerator be provided. Use an outlet that cannot be turned off by a switch. Do not use an extension cord.

Water Pressure: A cold water supply with water pressure between 30 and 120 psi (207 and 827 kPa) is required to operate the water dispenser and ice maker. If you have questions about your water pressure, call a licensed, qualified plumber.

Reverse Osmosis Water Supply:

IMPORTANT: The pressure of the water supply coming out of a reverse osmosis system going to the water inlet valve of the refrigerator needs to be between 30 and 120 psi (207 and 827 kPa).

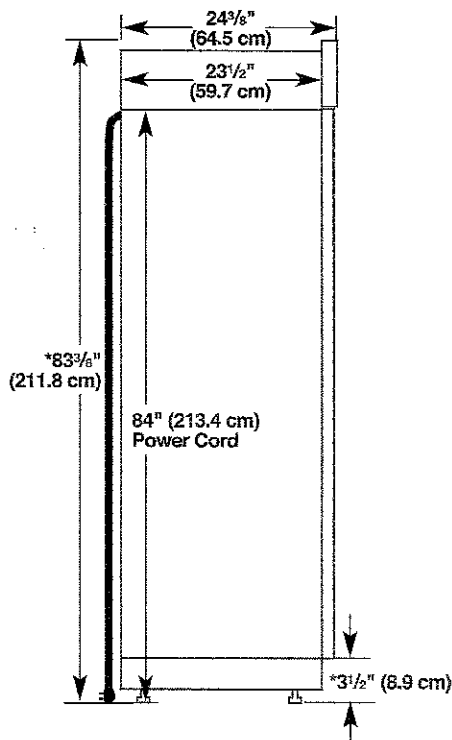
IMPORTANT:

- It is recommended that you do not install the refrigerator near an oven, radiator, or other heat source.
- Do not install in a location where the temperature will fall below 55°F (13°C).
- Floor must support the refrigerator weight, more than 600 lbs (272 kg), door panels and contents of the refrigerator.

PRODUCT DIMENSIONS

- The depth from the front of the top grille to the back of the refrigerator cabinet is 59 5/8" (64.5 cm).
- The power cord is 84" (213.4 cm) long.
- Height dimensions are shown with leveling legs extended 1/8" (3 mm) below the rollers.

SIDE VIEW

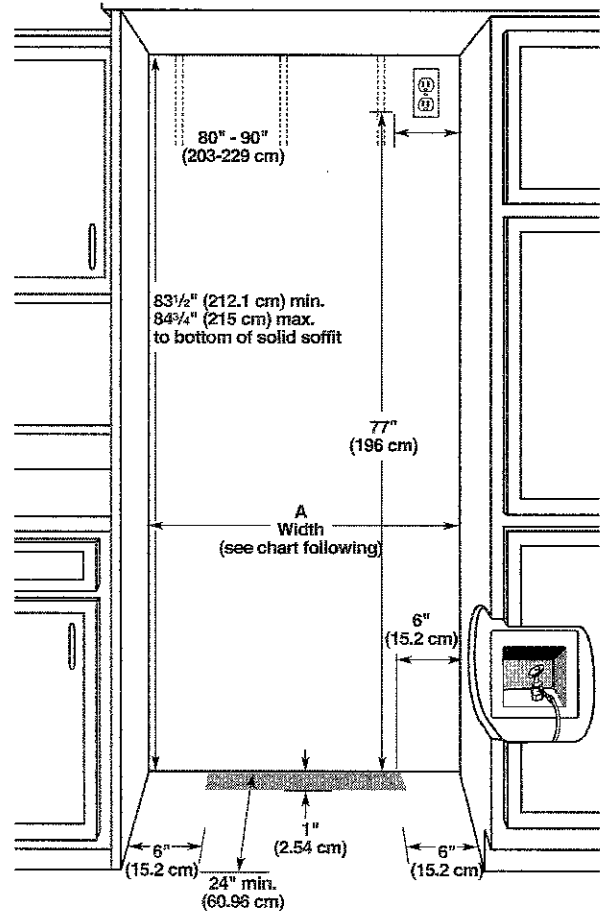


*When leveling legs are fully extended to 1 1/4" (3.2 cm) below rollers, add 1 1/8" (2.9 cm) to the height dimensions.

OPENING DIMENSIONS

To avoid tipping during use, the solid soffit must be within 1" (2.5 cm) maximum above the refrigerator. If the solid soffit is higher than 1" (2.5 cm) or one is not available, then the refrigerator must be braced. If the anti-tip boards are needed, they must be attached to the rear wall studs 80" to 90" (203 cm to 229 cm) above the floor. See "Install Anti-Tip Boards" for more information.

NOTE: A clearance of 1/2" (1.3 cm) above the top grille must be maintained in order for the top grille to be removed.



Model	Width A (as shown above)	Dimension B (as shown above)
36	35 1/2" to 35 3/4" (90.2 cm to 90.8 cm)	4" (10.2 cm)
42	41 1/2" to 41 3/4" (105.4 cm to 106.1 cm)	7 1/2" (19.1 cm)
48	47 1/2" to 47 3/4" (120.7 cm to 121.3 cm)	13 1/2" (34.3 cm)

NOTE: Flooring under refrigerator must be at same level as the room. Face of cabinetry must be plumb.



Access Inc.

Commitment Letter

May 2, 2017

Dear Sivatheepan Sivasubramaniam,

I am pleased to advise you that the following loan, to be secured by a FIRST Mortgage has been approved providing all the information supplied is correct and subject to the following outlined. This commitment is not transferable, and the benefit may not be assigned.

APPLICANT	: Sivatheepan Sivasubramaniam
SUBJECT PROPERTY	: 15 Roulette Cres., Brampton, ON
PURCHASE PRICE	: 1,100,000.00
DOWN PAYMENT	: 220,000.00
MORTGAGE AMOUNT	: 880,000.00
INTEREST RATE	: 3.89%
PAYMENT AMOUNT	: \$4576.65
LENDER	: Mortgage Alliance
TERM	: 5 Year - fixed
AMORTIZATION	: 25 Years
EXPIRATION	: August 1, 2019

All costs including legal, survey, mortgage insurance, etc are for the account of the applicant satisfactory confirmation of 20% down payment without recourse to borrowing and confirmation of employment and verification of income.

Please call me at 4168353339 should you have any questions.

Yours truly,
Daniel Sriranganathan
Mortgage Agent
Ph 4168353339