

CONSTRUCTION CLARIFICATION

LOT 38 –Brampton Encore

PROJECT- Brampton Encore

FRAMING:

- Please adjust the window in the kitchen. To be moved 5" over. See attached
- Please adjust rear sliding door opening from 8' to 6' away from kitchen. To allow for more cabinets.

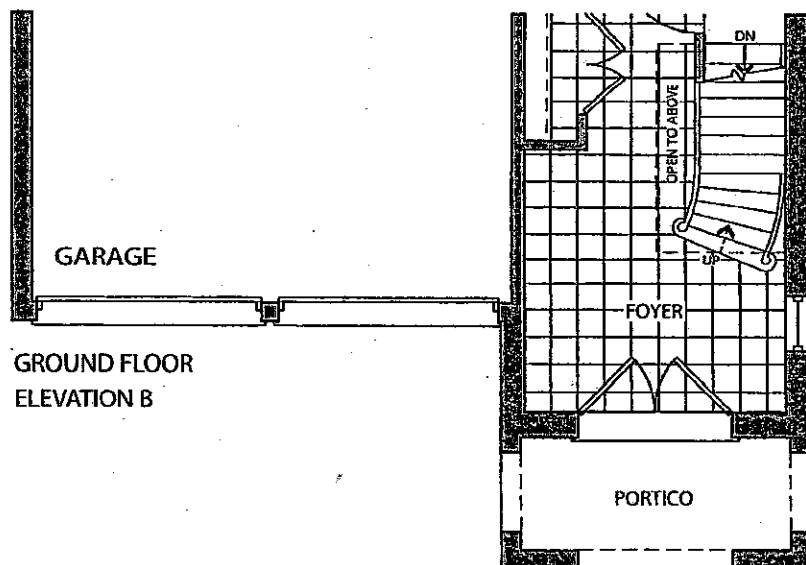
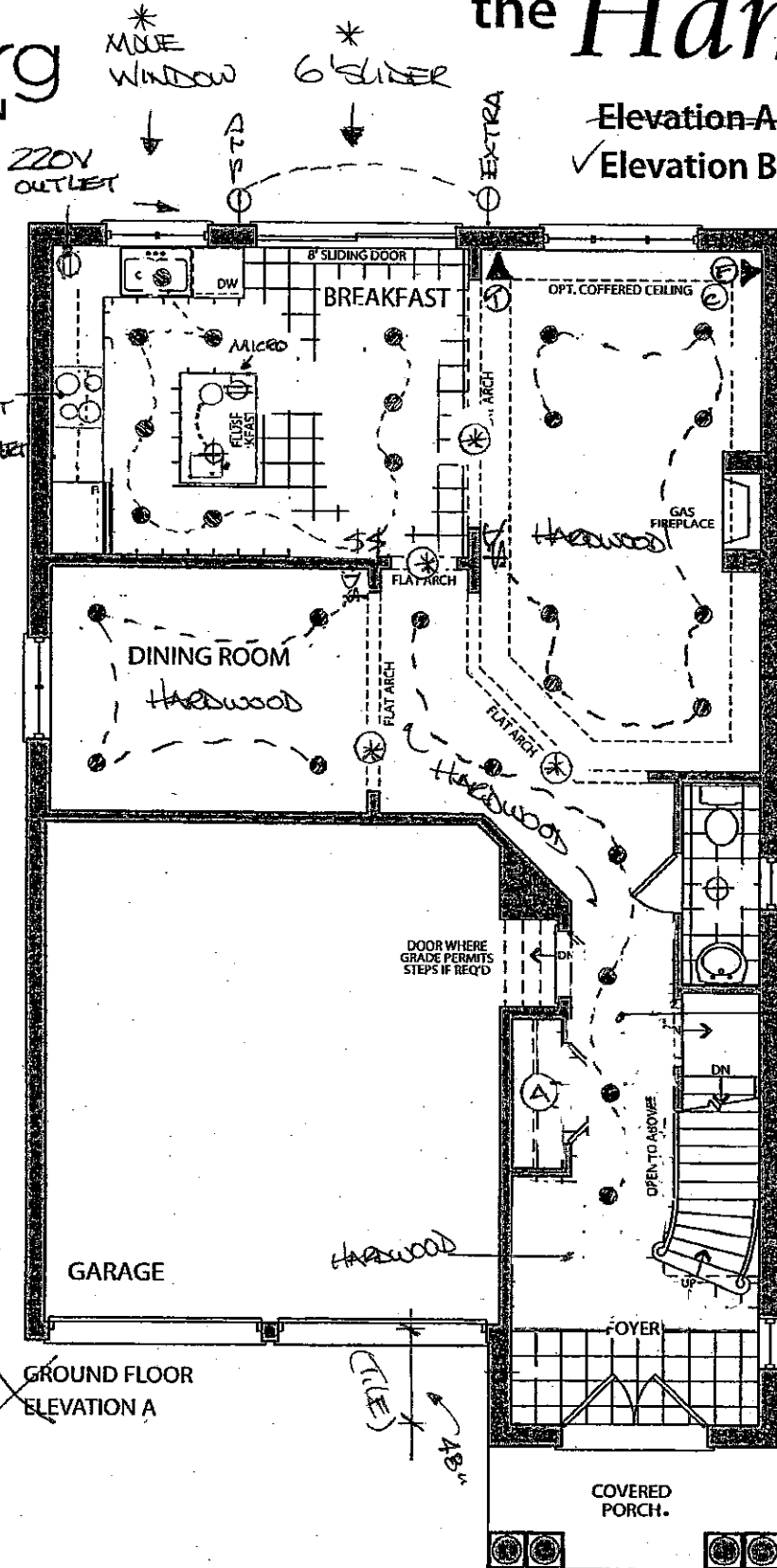
Thank you

DATE ISSUED: 3/13/17

ISSUED BY: Stacey Carlete

Elevation A • 2,388 sq.ft.

✓ Elevation B • 2,375 sq.ft.



Lot 38
Aug. 23 2016.

EM

KG-38
FEB 19 2017

EM

REVISED
MARCH 1 2017

EM

HARDWOOD

- BTLIGHT
- STD LIGHT
- ⊕ ADD ROUGH IN.
- * 8' ARCH.
- \$ SWITCH
- DS DIMMER SWITCH.
- ⊕ ELECT. OUTLET
- Ⓟ PHONE
- Ⓢ CABLE
- Ⓢ FIBER OPTIC
- Ⓢ SOURCE.
- Ⓢ AUTO LIGHT