

Kleinburg Glen - 33L - 1 - 25-2 Elev.B HUDSON

CENTRAL VAC AND WIRING

Inv.696	1 - FAMILY ROOM: CONDUIT PIPE - FOR TELEVISION - Locate approx. 60" A.F.F. ABOVE FIREPLACE, TERMINATING LEFT OF FIREPLACE. See plan for location.
Line9241	Note:
26Jul16 / 20Oct16	
Inv.696	1 - GARAGE ENTRANCE: ROUGH - IN FOR EXTRA SECURITY KEY PAD
Line9238	Note:
26Jul16 / 20Oct16	
Inv.696	1 - CONDUIT PIPE - FROM ATTIC TO ELECTRICAL PANEL - Terminate above laundry.
Line9240	Note:
26Jul16 / 20Oct16	
Inv.696	1 - FAMILY ROOM: ROUGH - IN FIBER OPTIC CABLE - HOME RUN TO ELECTRICAL PANEL - Locate by stairs, see plan for location.
Line9244	Note:
26Jul16 / 20Oct16	
Inv.696	2 - FAMILY ROOM: ROUGH - IN WIRING FOR ONE PAIR OF SPEAKERS - Locate in ceiling approx. 24" from each wall in corners. See plan for location. Terminating by cable location.
Line9248	Note:
26Jul16 / 20Oct16	
Inv.700	1 - FAMILY ROOM: *NOTE* LOCATE speakers in wall approx. 6" from ceiling (approx. 102" A.F.F.)
Line9774	Note:
26Jul16 / 20Oct16	

CERAMIC

Inv.696	1 - THRU OUT: *DELETE* ALL ACCESSORIES AND MIRRORS
Line12409	Note:
26Jul16 / 20Oct16	

DRYWALL

Inv.696	1 - SMOOTH CEILINGS - (2 - Story Design) 2ND FLOOR
Line9267	Note:
26Jul16 / 20Oct16	

ELECTRICAL

Inv.696	4 - FRONT ELEVATION: POT LIGHT: 4 INCH LINE VOLTAGE POT LIGHT - (EXTERIOR) - EACH
Line9288	Note:
26Jul16 / 20Oct16	
Inv.696	1 - KITCHEN: POT LIGHT: 4 INCH HALOGEN POT LIGHT - 440 WH - PRICED PER LIGHT - 10 or more POTLIGHTS * locate above kitchen sink (on separate switch)
Line9252	Note:
26Jul16 / 20Oct16	
Inv.696	1 - FAMILY ROOM: 110V WALL RECEPTACLE ON NORMAL CIRCUIT - Locate approx. 60" A.F.F. above fireplace. see plan for location
Line9242	Note:
26Jul16 / 20Oct16	
Inv.696	4 - KITCHEN: POT LIGHT: 4 INCH HALOGEN POT LIGHT - 440 WH - PRICED PER LIGHT - 10 or more POTLIGHTS See plan for location.
Line9249	Note:
26Jul16 / 20Oct16	

Kleinburg Glen - 33L - 1 - 25-2 Elev.B HUDSON

Inv.696	1 - KITCHEN: Single pole switch for potlights
Line9251	Note:
26Jul16 / 20Oct16	
Inv.696	1 - KITCHEN: Single pole switch for potlight above sink.
Line9253	Note:
26Jul16 / 20Oct16	
Inv.696	4 - MAIN HALL: POT LIGHT: 4 INCH HALOGEN POT LIGHT - 440 WH - PRICED PER LIGHT - 10 or more POTLIGHTS *DELETE* builders standard ceiling light, install 4 potlights, see plan for location. Use standard switch.
Line9254	Note:
26Jul16 / 20Oct16	
Inv.696	1 - POWDER ROOM: ROUGH - IN CEILING OUTLET ON SAME SWITCH - DOES NOT INCLUDE FIXTURE - *DELETE BUILDER'S STANDARD light above mirror, use standard switch. Locate approx. center of room.
Line9257	Note:
26Jul16 / 20Oct16	
Inv.696	1 - FOYER: Single pole switch for soffit lights
Line9289	Note:
26Jul16 / 20Oct16	
Inv.696	1 - GARAGE ENTRY: POT LIGHT: 4 INCH HALOGEN POT LIGHT - 440 WH - PRICED PER LIGHT - 10 OR MORE *DELETE* BUILDER'S STANDARD LIGHT, INSTALL POTLIGHT INSTEAD - USING STANDARD SWITCH
Line9255	Note:
26Jul16 / 20Oct16	
Inv.696	1 - MASTER ENSUITE: RELOCATE STANDARD FIXTURE - to center above sink. See plan for location.
Line9260	Note:
26Jul16 / 20Oct16	
Inv.696	1 - MASTER ENSUITE: ROUGH - IN WALL OUTLET ON SAME SWITCH - DOES NOT INCLUDE FIXTURE - Locate above 2nd sink, use same switch as standard. See plan for location.
Line9261	Note:
26Jul16 / 20Oct16	
Inv.696	1 - MASTER BEDROOM: 110V WALL RECEPTACLE ON NORMAL CIRCUIT - Locate approx. 60" A.F.F.
Line9268	Note:
26Jul16 / 20Oct16	
Inv.700	6 - FAMILY ROOM: POT LIGHT: 4 INCH HALOGEN POT LIGHT - 440 WH - PRICED PER LIGHT - 1 - 9 POTLIGHTS - install 6 potlights, see plan for location.
Line9775	Note:
26Jul16 / 20Oct16	
Inv.700	1 - KITCHEN: 110V WALL RECEPTACLE ON DEDICATED CIRCUIT for future 600+ cfm hood fan.
Line9317	Note:
26Jul16 / 20Oct16	
Inv.700	1 - KITCHEN: 110V WALL RECEPTACLE ON DEDICATED CIRCUIT - GAS FIRED APPLIANCE - FOR AUX. EQUIPMENT - NOT A STOVE PLUG
Line9705	Note:
26Jul16 / 20Oct16	
Inv.700	1 - KITCHEN: ROUGH - IN CEILING OUTLET ON SAME SWITCH - DOES NOT INCLUDE FIXTURE - Locate above island, use same switch as standard ceiling light. See plan for location.
Line9706	Note:
26Jul16 / 20Oct16	

Kleinburg Glen - 33L - 1 - 25-2 Elev.B HUDSON

Inv.700	1 - FAMILY ROOM: Single pole switch for potlights.
Line9776	Note:
26Jul16 / 20Oct16	
Inv.700	1 - ADDITIONAL EXTERIOR COACH LIGHT ON SAME SWITCH (BUILDER STANDARD FIXTURE) - In addition to builder's standard coach light, add 1 on opposite side of garage using same switch as standard. See sketch for location.
Line9777	Note:
26Jul16 / 20Oct16	

EXTERIOR COLOURS

Inv.696	1 - EXTERIOR COLOUR PACKAGE 4
Line12958	Note:
26Jul16 / 20Oct16	

FRAMING

Inv.696	1 - FAMILY ROOM: Build above fireplace to ceiling.
Line9243	Note:
26Jul16 / 20Oct16	
Inv.696	1 - MASTER ENSUITE: **REVISE LAYOUT** Delete tub, move toilet, increase shower to full width, re-center vanity in space. See plan for location.
Line9258	Note:
26Jul16 / 20Oct16	
Inv.696	1 - MASTER ENSUITE: SHOWER STALL SEAT
Line9263	Note:
26Jul16 / 20Oct16	
Inv.696	7 - MAIN FLOOR: FRAME MAIN FLOOR DOORS & ARCHES AT 96 INCH - ADDED WITH THE ADDITION OF TALLER INTERIOR DOORS
Line9274	Note:
26Jul16 / 20Oct16	

GLASS AND MIRROR

Inv.696	1 - THRU OUT: *DELETE* ALL ACCESSORIES AND MIRRORS
Line9239	Note:
26Jul16 / 20Oct16	
Inv.696	1 - MASTER ENSUITE: CONVERT FRAMED SHOWER TO 10MM FRAMELESS SHOWER ENCLOSURE WITH DOOR AND 10MM SIDE PANEL Note: layout revised
Line9259	Note:
26Jul16 / 20Oct16	

HVAC

Inv.700	1 - KITCHEN: UPGRADE VENTING FOR STOVE TO 8 INCH PIPE EXTERIOR WALL
Line9318	Note:
26Jul16 / 20Oct16	
Inv.700	1 - KITCHEN: GAS LINE ROUGH - GROUND FLOOR
Line9704	Note:
26Jul16 / 20Oct16	

INTERIOR TRIM AND DOORS

Kleinburg Glen - 33L - 1 - 25-2 Elev.B HUDSON

Inv.696	3 - MAIN FLOOR: EXTENDED HEIGHT ARCHWAY (PRICE PER DOORWAY) - 96"
Line9275	Note:
26Jul16 / 20Oct16	
Inv.696	4 - MAIN FLOOR: STANDARD DOOR EXTENDED HEIGHT 96 INCH (PRICE PER DOOR) - GROUND FLOOR 2 STOREY MODELS
Line9276	Note:
26Jul16 / 20Oct16	

KITCHEN AND BATH CABINETRY

Inv.696	1 - MASTER ENSUITE: **REVISE LAYOUT** Delete tub, move toilet, increase shower to full width, re-center vanity in space. See plan for location.
Line12960	Note:
26Jul16 / 20Oct16	

MISC.

Inv.696	1 - Purchaser has attended a Structural appointment at the Decor Centre & has DECLINED any additional upgrades and accepts and acknowledges that there will be no further structural changes/additions/deletions to be made upon signing on July 26, 2016.
Line9278	Note:
26Jul16 / 20Oct16	
Inv.696	1 - Purchasers are aware & accepts that ANY changes made to upgrades after signing this Purchasers Extra Form are subject to a minimum administration fee of \$500. PLUS a 10% holdback fee.
Line9279	Note:
26Jul16 / 20Oct16	
Inv.696	1 - BONUS PACKAGE: \$5,000.00 (INCLUDING TAXES) WORTH OF UPGRADES FROM GOLD PARK HOMES DÉCOR CENTRE IS BEING APPLIED TOWARD THE STRUCTURAL APPOINTMENT. PURCHASER HAS A REMAINING AMOUNT OF \$00 (INCLUDING TAXES) TO BE USED TOWARD THE COLOUR APPOINTMENT.
Line9280	Note:
26Jul16 / 20Oct16	
Inv.700	1 - Purchasers are aware & accepts that ANY changes made to upgrades after signing this Purchasers Extra Form are subject to a minimum administration fee of \$500. PLUS a 10% holdback fee.
Line9778	Note:
26Jul16 / 20Oct16	
Inv.700	1 - Purchaser has attended a Structural appointment at the Decor Centre & has DECLINED any additional upgrades and accepts and acknowledges that there will be no further structural changes/additions/deletions to be made upon signing on July 26, 2016.
Line9789	Note:
26Jul16 / 20Oct16	

PLUMBING

Inv.696	1 - MASTE ENSUITE: TRENCH DRAIN APPROX 27 INCH LINEAR TRENCH DRAIN TILED - ACO 3705/93871 - UPG 1
Line9264	Note:
26Jul16 / 20Oct16	
Inv.696	1 - MASTER ENSUITE: ROUGH - IN FOR RAINSHOWER HEAD - SHOWER HEAD NOT INCLUDED AND MUST BE PURCHASED
Line9265	Note:
26Jul16 / 20Oct16	
Inv.696	1 - KITCHEN: ROUGH - IN - WATERLINE FOR FRIDGE
Line9266	Note:
26Jul16 / 20Oct16	

Kleinburg Glen - 33L - 1 - 25-2 Elev.B HUDSON

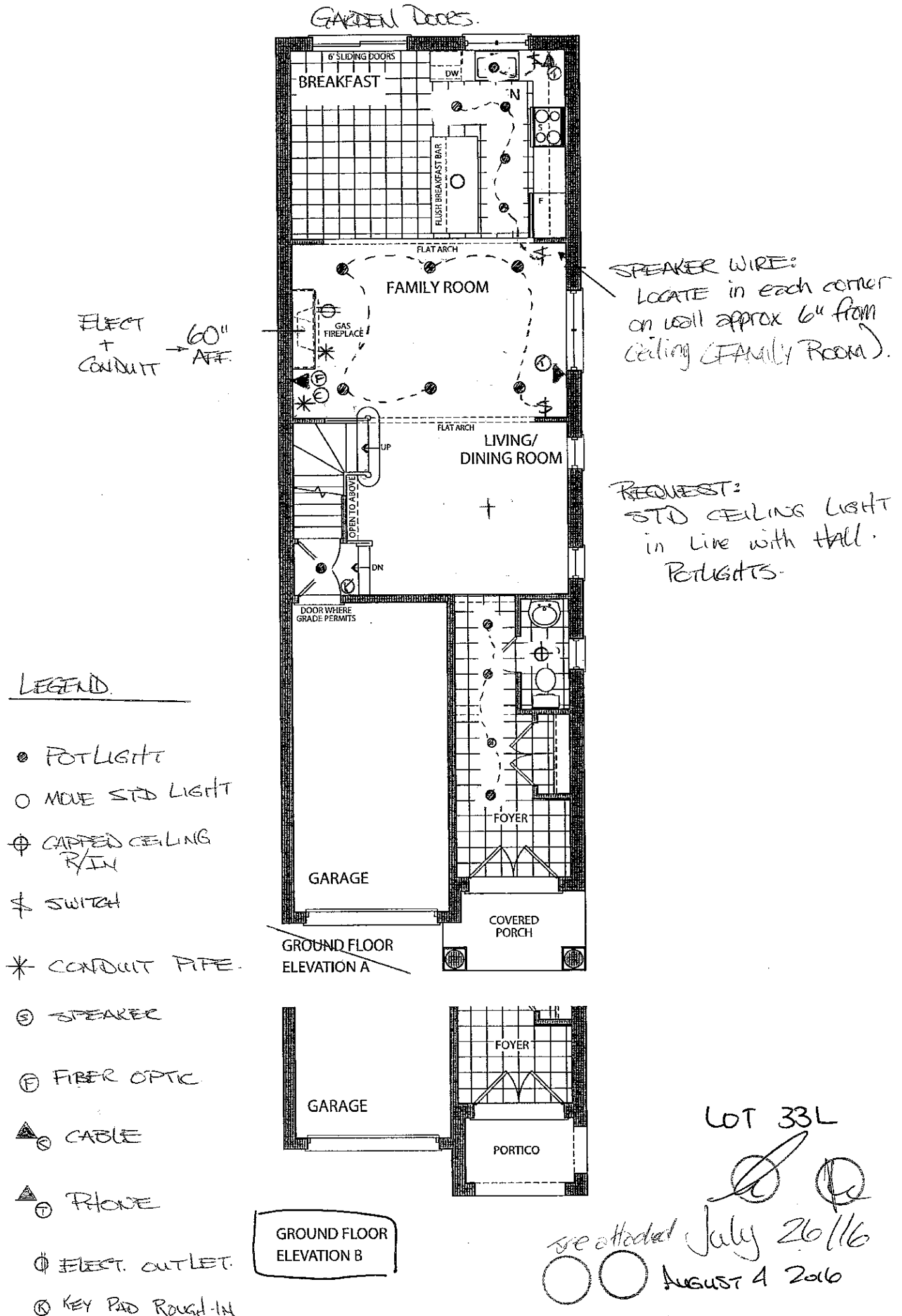
Inv.696	1 - GARAGE: HOSE BIB - STANDARD TO UPGRADED WITH HOT AND COLD WATER VALVE
Line9273	Note:
26Jul16 / 20Oct16	
Inv.696	1 - MASTER ENSUITE: **REVISE LAYOUT** Delete tub, move toilet, increase shower to full width, re-center vanity in space. See plan for location.
Line12410	Note:
26Jul16 / 20Oct16	

WINDOWS - BASEMENT

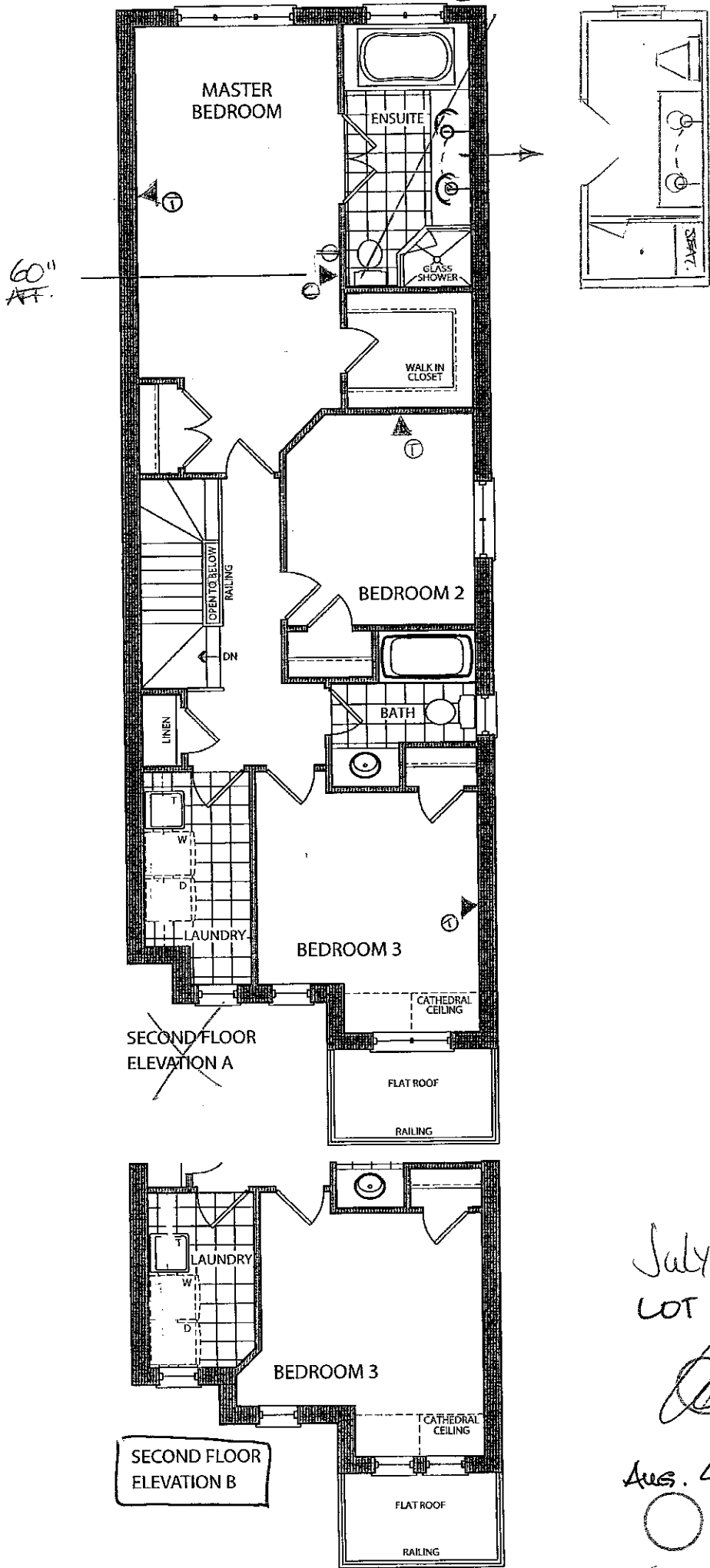
Inv.696	1 - BASEMENT WINDOWS - UPGRADE EXISTING BASEMENT WINDOW TO 53 INCH X 12 INCH See plan for location
Line9272	Note:
26Jul16 / 20Oct16	
Inv.696	2 - BASEMENT WINDOWS - UPGRADE EXISTING BASEMENT WINDOW TO 30 INCH X 16 INCH- Rear Windows only
Line9270	Note:
26Jul16 / 20Oct16	

WINDOWS AND DOORS

Inv.696	1 - BREAKFAST: GARDEN DOORS IN LIEU OF PATIO SLIDERS - 6FT X 80 INCH WITH CLEAR GLASS
Line9277	Note:
26Jul16 / 20Oct16	



Elevation A • 1,898 sq.ft.
Elevation B • 1,898 sq.ft.



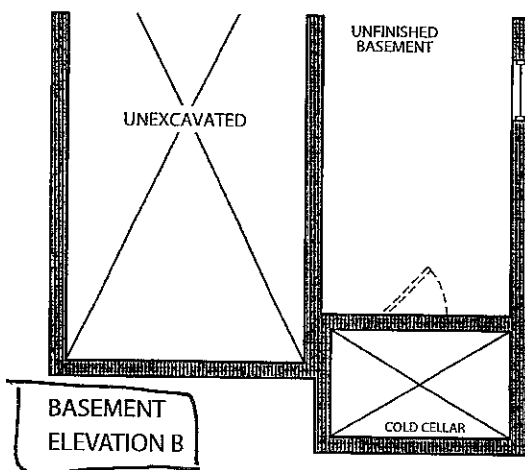
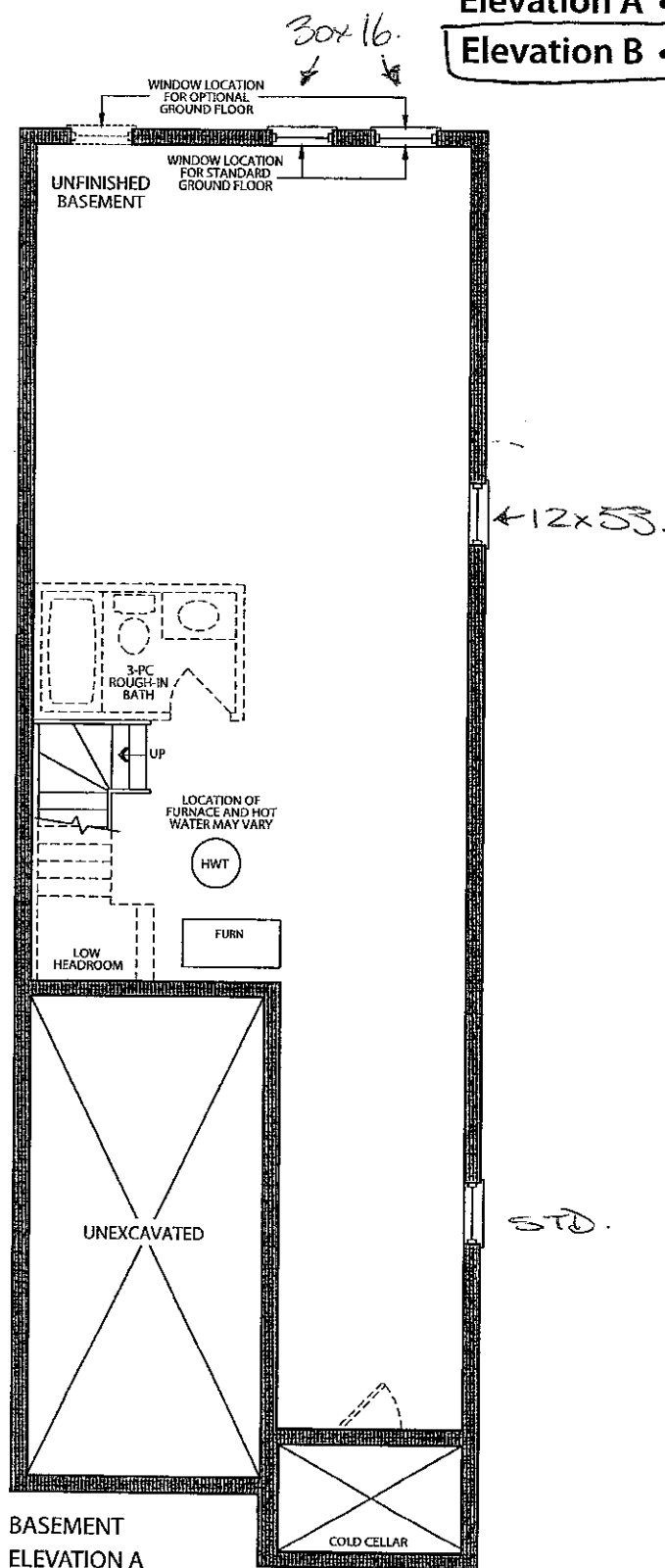
July 26/16
LOT 33L

Aug. 4 2016

so attached

Elevation A • 1,898 sq.ft.

Elevation B • 1,898 sq.ft.



July 26 2016
LOT 33L

AUG. 4 2016

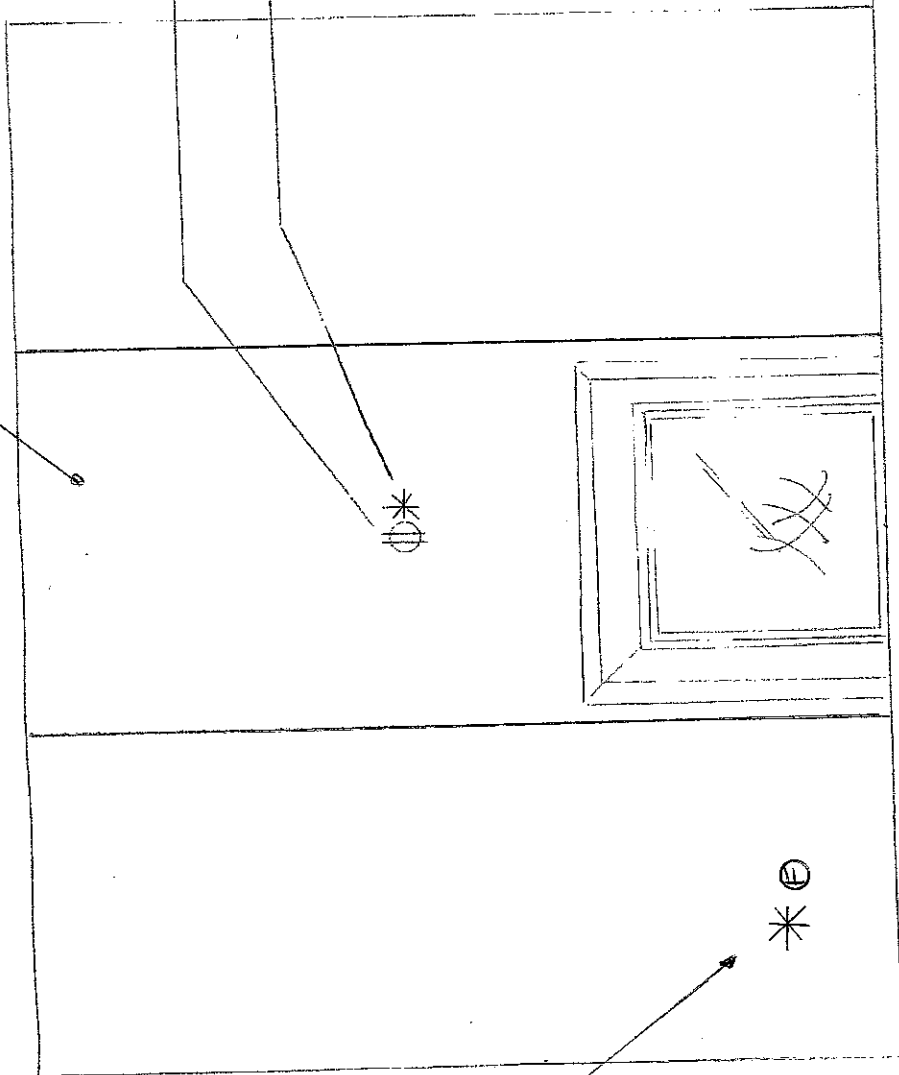
See attached

BUILD OUT ABOVE
FIREPLACE TO CEILING

ADD ELECTRICAL (FUTURE TV).

CONDUIT (ABOVE FIREPLACE
to left of fireplace)

60" APP
APPROX



FIBRE OPTIC
+
SPEAKER, CONDUIT
TERMINATION
POINT

30 added
FAMILY ROOM - FIREPLACE ELEVATION.

LOT 33L
July 26 2016 + Aug 4 2016.

33 L.
* - ~~CRACK~~
- ~~CRACK~~
Left
* - ~~CRACK~~
Left

July 26 2016 -
D

AUG 4 2016
O O
* with view

* ~~CRACK~~
Left

