

Brampton Encore - 122 - 1 - 41-6 Elev.B VERDI OPT - GFA1

CENTRAL VAC AND WIRING

Inv.995	1 - ATTIC: INSTALL CONDUIT PIPE- FROM ATTIC TO ELECTRICAL PANEL- MUST SPECIFY LOCATION AND TERMINATION POINT. TO BE PLACED AS CLOSE TO THE FRONT OF THE HOUSE AS POSSIBLE (FOR FUTURE EXTERIOR POT LIGHTS)
Line14234	Note:
17Nov16 / 25Nov16	

CERAMIC

Inv.501	1 - BEDROOM 3: DELETE DOOR IN BEDROOM #3 INTO THE TWIN BATH. BUILD AN ENSUITE FOR BED #3 BY TAKING SPACE OUT OF BEDROOM 2'S ENSUITE. NEW ENSUITE INCLUDES STAND-UP SHOWER, INCLUDES NEW TOILET AND SINK/CABINETS. SEE SKETCH
Line14186	Note:
17May16 / 18Nov16	

DRYWALL

Inv.501	1 - MASTER ENSUITE-WALK-IN CLOSET: DELETE SMALL WALL THAT SEPERATES THE HIS/HERS AREA. SEE SKETCH
Line13659	Note:
17May16 / 18Nov16	

Inv.501	1 - BEDROOM 3: DELETE DOOR IN BEDROOM #3 INTO THE TWIN BATH. BUILD AN ENSUITE FOR BED #3 BY TAKING SPACE OUT OF BEDROOM 2'S ENSUITE. NEW ENSUITE INCLUDES STAND-UP SHOWER, INCLUDES NEW TOILET AND SINK/CABINETS. SEE SKETCH
Line13661	Note:
17May16 / 18Nov16	

Inv.501	1 - LAUNDRY ROOM: CHANGE LAUNDRY ROOM BY OPENING UP AREA BETWEEN FAMILY ROOM AND LIVING ROOM TO MAKE A SERVERY. PRICE INCLUDES A BAR SINK AND ELECTRICAL FOR FUTURE BAR FRIDGE. SEE SKETCH
Line13651	Note: PRICE INCLUDES SINK, STANDARD CABINETS AND ELECTRICAL. GRANITE IS EXTRA
17May16 / 18Nov16	

Inv.501	1 - CLOSE OFF THE OTHER HALF OF THE LAUNDRY ROOM AND DELETE BROOM CLOSET TO MAKE A FUTURE WALK-IN PANTRY AREA. SEE SKETCH
Line13652	Note:
17May16 / 18Nov16	

Inv.501	1 - ENSUITE #2: DELETE CLOSET AREA INTO ENSUITE 2 AND REVISE THE LAYOUT OF THE WASHROOM, AS SHOWN ON THE FLOOR PLAN
Line13664	Note:
17May16 / 18Nov16	

Inv.501	1 - GROUND FLOOR - OPTIONAL LAUNDRY ROOM:
	BUILD A ROOM FOR THE OPTIONAL LAUNDRY AREA. ADD TUB AND MAKE WASHER AND DRYER SIDE BY SIDE, INSTEAD OF STACKED. SEE SKETCH
Line13672	Note:
17May16 / 18Nov16	

Inv.501	1 - GROUND FLOOR: INSTALL SMOOTH CEILINGS - (3-Story Design) GROUND FLOOR
Line13731	Note:
17May16 / 18Nov16	

Inv.501	1 - BEDROOM #2: INSTALL A CLOSET ON DOOR WALL. SEE SKETCH. INCLUDES DOORS, APPROX. 5 FEET WIDE, AS PER AVAILABLE SPACE
Line13749	Note:
17May16 / 18Nov16	

ELECTRICAL

Brampton Encore - 122 - 1 - 41-6 Elev.B VERDI OPT - GFA1

Inv.501	1 - KITCHEN: NOTE ELECTRICAL AND PLUMBING CHANGES TO KITCHEN FLOOR PLAN. SINK AND DISHWASHER HAVE MOVED OUT OF THE ISLAND. FRIDGE AND STOVE LOCATIONS HAVE BEEN SWITCHED
Line13657	Note:
17May16 / 18Nov16	
Inv.501	1 - LAUNDRY ROOM: CHANGE LAUNDRY ROOM BY OPENING UP AREA BETWEEN FAMILY ROOM AND LIVING ROOM TO MAKE A SERVERY. PRICE INCLUDES A BAR SINK AND ELECTRICAL FOR FUTURE BAR FRIDGE. SEE SKETCH
Line13654	Note:
17May16 / 18Nov16	
Inv.501	1 - KITCHEN: INSTALL 110V WALL RECEPTACLE ON DEDICATED CIRCUIT - FOR MICROWAVE - MICROWAVE NOT INCLUDED TO GO IN ISLAND. SEE SKETCH
Line13675	Note:
17May16 / 18Nov16	
Inv.501	1 - KITCHEN: INSTALL 110V WALL RECEPTACLE ON DEDICATED CIRCUIT - ON KITCHEN ISLAND. SEE SKETCH
Line13676	Note:
17May16 / 18Nov16	
Inv.501	1 - KITCHEN: INSTALL 110V WALL RECEPTACLE ON DEDICATED CIRCUIT - FOR FREEZER. FREEZER REQUIRES A SEPERATE PLUG FROM THE FRIDGE. SEE APPLIANCE SPECS FOR FURTHER DETAILS
Line13677	Note:
17May16 / 18Nov16	
Inv.501	1 - 200 AMP ELECTRICAL SERVICE
Line13718	Note:
17May16 / 18Nov16	
Inv.501	1 - FAMILY ROOM: INSTALL ONE (X1) POT LIGHT: 4 INCH HALOGEN POT LIGHT - 440 WH- PRICED PER LIGHT- IN FAMILY ROOM. IN ADDITION TO STANDARD LIGHT
Line13719	Note:
17May16 / 18Nov16	
Inv.501	1 - DINING ROOM: INSTALL ONE (X1) POT LIGHT: 4 INCH HALOGEN POT LIGHT - 440 WH- PRICED PER LIGHT- IN DINING ROOM. IN ADDITION TO STANDARD LIGHT
Line13720	Note:
17May16 / 18Nov16	
Inv.501	1 - LIVING ROOM: INSTALL ONE (X1) POT LIGHT: 4 INCH HALOGEN POT LIGHT - 440 WH- PRICED PER LIGHT- IN LIVING ROOM. IN ADDITION TO STANDARD LIGHT
Line13721	Note:
17May16 / 18Nov16	
Inv.501	1 - MAIN HALL: INSTALL ONE (X1) POT LIGHT: 4 INCH HALOGEN POT LIGHT - 440 WH- PRICED PER LIGHT- IN MAIN HALL. IN ADDITION TO STANDARD LIGHT
Line13722	Note:
17May16 / 18Nov16	
Inv.501	3 - KITCHEN: INSTALL ADDITIONAL THREE (X3) ROUGH - IN CEILING OUTLETS & SWITCH (WITH COVER PLATE) - DOES NOT INCLUDE FIXTURE - MUST SPECIFY LOCATION. SEE SKETCH. KEEP STANDARD LIGHT, TO BE PLACED AT ELECTRICIAN'S DISCRETION
Line13725	Note:
17May16 / 18Nov16	
Inv.501	1 - UPPER HALL: INSTALL ONE (X1) POT LIGHT: 4 INCH HALOGEN POT LIGHT - 440 WH (INSULATED)-PRICED PER LIGHT-IN UPPER HALL. SEE SKETCH
Line13755	Note:
17May16 / 18Nov16	

Brampton Encore - 122 - 1 - 41-6 Elev.B VERDI OPT - GFA1

Inv.501	1 - BEDROOM 3: DELETE DOOR IN BEDROOM #3 INTO THE TWIN BATH. BUILD AN ENSUITE FOR BED #3 BY TAKING SPACE OUT OF BEDROOM 2'S ENSUITE. NEW ENSUITE INCLUDES STAND-UP SHOWER, INCLUDES NEW TOILET AND SINK/CABINETS. SEE SKETCH
Line14189	Note:
17May16 / 18Nov16	
Inv.501	1 - ENSUITE #2: DELETE CLOSET AREA INTO ENSUITE 2 AND REVISE THE LAYOUT OF THE WASHROOM, AS SHOWN ON THE FLOOR PLAN
Line14190	Note:
17May16 / 18Nov16	
Inv.501	1 - GROUND FLOOR: INSTALL
	OPTIONAL GROUND FLOOR ELEVATON B WITH OPTIONAL LAUNDRY ROOM MAKE WASHER AND DRYER SIDE BY SIDE, INSTEAD OF STACKED. SEE SKETCH
Line14192	Note:
17May16 / 18Nov16	
Inv.995	1 - EXTERIOR: INSTALL ONE (X1) POT LIGHT: 4 INCH LINE VOLTAGE POT LIGHT - (EXTERIOR) -EACH. SEE SKETCH
Line14233	Note:
17Nov16 / 25Nov16	

EXTERIOR COLOURS

Inv.501	1 - EXTERIOR COLOUR PACKAGE 7
Line14301	Note:
17May16 / 18Nov16	

FRAMING

Inv.501	1 - GROUND FLOOR: DELETE WALL BETWEEN REC ROOM AND NANNY BEDROOM.
Line13669	Note:
17May16 / 18Nov16	
Inv.501	1 - GROUND FLOOR: INSTALL
	OPTIONAL GROUND FLOOR ELEVATON B WITH OPTIONAL LAUNDRY ROOM MAKE WASHER AND DRYER SIDE BY SIDE, INSTEAD OF STACKED. SEE SKETCH
Line13671	Note:
17May16 / 18Nov16	
Inv.501	1 - INTERIOR: INSTALL MANDOOR - GARAGE TO HOUSE- AS PER PLAN AND GRADE PERMITING
Line13727	Note: GIVEN IN AGREEMENT OF PURCHASE AND SALE
17May16 / 18Nov16	
Inv.501	1 - 2ND FLOOR: INSTALL SMOOTH CEILINGS - (3-Story Design) 2ND FLOOR
Line13732	Note:
17May16 / 18Nov16	
Inv.501	1 - LAUNDRY ROOM: CHANGE LAUNDRY ROOM BY OPENING UP AREA BETWEEN FAMILY ROOM AND LIVING ROOM TO MAKE A SERVERY. PRICE INCLUDES A BAR SINK AND ELECTRICAL FOR FUTURE BAR FRIDGE. SEE SKETCH
Line14180	Note:
17May16 / 18Nov16	
Inv.501	1 - CLOSE OFF THE OTHER HALF OF THE LAUNDRY ROOM AND DELETE BROOM CLOSET TO MAKE A FUTURE WALK-IN PANTRY AREA. SEE SKETCH
Line14181	Note:
17May16 / 18Nov16	

Brampton Encore - 122 - 1 - 41-6 Elev.B VERDI OPT - GFA1

Inv.501	1 - MASTER ENSUITE-WALK-IN CLOSET: DELETE SMALL WALL THAT SEPERATES THE HIS/HERS AREA. SEE SKETCH
Line14182	Note:
17May16 / 18Nov16	
Inv.501	1 - BEDROOM 3: DELETE DOOR IN BEDROOM #3 INTO THE TWIN BATH. BUILD AN ENSUITE FOR BED #3 BY TAKING SPACE OUT OF BEDROOM 2'S ENSUITE. NEW ENSUITE INCLUDES STAND-UP SHOWER, INCLUDES NEW TOILET AND SINK/CABINETS. SEE SKETCH
Line14184	Note:
17May16 / 18Nov16	
Inv.501	1 - ENSUITE #2: DELETE CLOSET AREA INTO ENSUITE 2 AND REVISE THE LAYOUT OF THE WASHROOM, AS SHOWN ON THE FLOOR PLAN
Line14188	Note:
17May16 / 18Nov16	
Inv.501	1 - OPTIONAL GROUND FLOOR
Line14302	Note:
17May16 / 18Nov16	
Inv.501	1 - MANDOOR - GARAGE TO HOUSE- AS PER PLAN AND GRADE PERMITING
Line14303	Note: AS PER APS
17May16 / 18Nov16	
Inv.501	1 - BACK DOOR- GARAGE TO EXTERIOR- AS PER PLAN AND GRADE PERMITTING
Line14305	Note:
17May16 / 18Nov16	
Inv.995	1 - GROUND FLOOR: INSTALL FRENCH DOORS IN LIEU OF PATIO SLIDERS - 6FT X 80 INCH FRENCH DOORS - NO SCREEN CLEAR GLASS
Line14568	Note:
17Nov16 / 25Nov16	

GLASS AND MIRROR

Inv.501	1 - MASTER ENSUITE: CONVERT FRAMED SHOWER TO 10MM FRAMLESS SHOWER ENCLOSURE WITH DOOR AND 10MM SIDE PANEL
Line13736	Note:
17May16 / 18Nov16	

HVAC

Inv.501	1 - KITCHEN: INSTALL UPGRADE VENTING FOR STOVE TO 8" PIPE EXTERIOR WALL
Line13674	Note:
17May16 / 18Nov16	
Inv.501	1 - KITCHEN: GAS LINE ROUGH - MAIN FLOOR - (3 STOREY MODELS) FOR STOVE
Line13738	Note:
17May16 / 18Nov16	
Inv.501	1 - BEDROOM 3: DELETE DOOR IN BEDROOM #3 INTO THE TWIN BATH. BUILD AN ENSUITE FOR BED #3 BY TAKING SPACE OUT OF BEDROOM 2'S ENSUITE. NEW ENSUITE INCLUDES STAND-UP SHOWER, INCLUDES NEW TOILET AND SINK/CABINETS. SEE SKETCH
Line14185	Note:
17May16 / 18Nov16	
Inv.501	1 - GROUND FLOOR: INSTALL OPTIONAL GROUND FLOOR ELEVATON B WITH OPTIONAL LAUNDRY ROOM MAKE WASHER AND DRYER SIDE BY SIDE, INSTEAD OF STACKED. SEE SKETCH
Line14193	Note:
17May16 / 18Nov16	

Brampton Encore - 122 - 1 - 41-6 Elev.B VERDI OPT - GFA1

INTERIOR TRIM AND DOORS

Inv.501	3 - MAIN FLOOR: INSTALL THREE (X3) STANDARD DOORS EXTENDED HEIGHT 96" (PRICE PER DOOR) MAIN FLOOR 3 STOREY MODELS - FOR CLOSET, POWDER ROOM AND PANTRY. SEE SKETCH
Line13740	Note:
17May16 / 18Nov16	
Inv.501	1 - MAIN FLOOR: INSTALL ONE (X1) STANDARD FRENCH DOOR EXTENDED HEIGHT 96" (PRICE PER DOOR) MAIN FLOOR 3 STOREY MODELS - TO GO AT DEN. SEE SKETCH
Line13741	Note:
17May16 / 18Nov16	
Inv.501	1 - MASTER ENSUITE-WALK-IN CLOSET: DELETE SMALL WALL THAT SEPERATES THE HIS/HERS AREA. SEE SKETCH
Line14183	Note:
17May16 / 18Nov16	
Inv.501	1 - BEDROOM 3: DELETE DOOR IN BEDROOM #3 INTO THE TWIN BATH. BUILD AN ENSUITE FOR BED #3 BY TAKING SPACE OUT OF BEDROOM 2'S ENSUITE. NEW ENSUITE INCLUDES STAND-UP SHOWER. SEE SKETCH
Line14187	Note:
17May16 / 18Nov16	

KITCHEN AND BATH CABINETRY

Inv.501	1 - LAUNDRY ROOM: CHANGE LAUNDRY ROOM BY OPENING UP AREA BETWEEN FAMILY ROOM AND LIVING ROOM TO MAKE A SERVERY. PRICE INCLUDES A BAR SINK AND ELECTRICAL FOR FUTURE BAR FRIDGE. SEE SKETCH
Line13655	Note:
17May16 / 18Nov16	
Inv.501	1 - KITCHEN: NOTE ELECTRICAL AND PLUMBING CHANGES TO KITCHEN FLOOR PLAN. SINK AND DISHWASHER HAVE MOVED OUT OF THE ISLAND. FRIDGE AND STOVE LOCATIONS HAVE BEEN SWITCHED.
Line13656	Note: EXTRA CHARGES WILL APPLY ONCE KITCHEN COMPANY HAS REVIEWED THE NEW PLAN.
17May16 / 18Nov16	

MISC.

Inv.501	1 - ELECTRICAL FOR APPLIANCES:
	*PLEASE NOTE: PRICES ABOVE MAY CHANGE. PURCHASER(S) TO PROVIDE PROPER APPLIANCE SPECIFICATIONS TO PRICE APPLICABLE ELECTRICAL ACCORDINGLY.
Line13679	Note:
17May16 / 18Nov16	
Inv.501	1 - BONUS PACKAGE: \$10,000.00 (INCLUDING TAXES) WORTH OF UPGRADES FROM GOLD PARK HOMES DÉCOR CENTRE IS BEING APPLIED TOWARD THE STRUCTURAL APPOINTMENT. PURCHASER HAS A REMAINING AMOUNT OF \$00 (INCLUDING TAXES) TO BE USED TOWARD THE COLOUR APPOINTMENT
Line13752	Note:
17May16 / 18Nov16	
Inv.501	1 - Purchaser has attended a Structural appointment at the Decor Centre & has DECLINED any additional upgrades and accepts and acknowledges that there will be no further structural changes/additions/deletions to be made upon signing on November 10, 2016
Line13753	Note:
17May16 / 18Nov16	
Inv.501	1 - Purchasers are aware & accepts that ANY changes made to upgrades after signing this Purchasers Extra Form are subject to a minimum administration fee of \$500. PLUS a 10% holdback fee
Line13754	Note:
17May16 / 18Nov16	

Brampton Encore - 122 - 1 - 41-6 Elev.B VERDI OPT - GFA1

Inv.995	1 - Purchasers are aware & accepts that ANY changes made to upgrades after signing this Purchasers Extra Form are subject to a minimum administration fee of \$500. PLUS a 10% holdback fee
Line14236	Note:
17Nov16 / 25Nov16	

PLUMBING

Inv.501	1 - BEDROOM 3: DELETE DOOR IN BEDROOM #3 INTO THE TWIN BATH. BUILD AN ENSUITE FOR BED #3 BY TAKING SPACE OUT OF BEDROOM 2'S ENSUITE. NEW ENSUITE INCLUDES STAND-UP SHOWER, TOILET AND SINK. SEE SKETCH
Line13663	Note:
17May16 / 18Nov16	
Inv.501	1 - ENSUITE #2: DELETE CLOSET AREA INTO ENSUITE 2 AND REVISE THE LAYOUT OF THE WASHROOM, AS SHOWN ON THE FLOOR PLAN
Line13665	Note:
17May16 / 18Nov16	
Inv.501	1 - LAUNDRY ROOM: CHANGE LAUNDRY ROOM BY OPENING UP AREA BETWEEN FAMILY ROOM AND LIVING ROOM TO MAKE A SERVERY. PRICE INCLUDES A BAR SINK AND ELECTRICAL FOR FUTURE BAR FRIDGE. SEE SKETCH
Line13653	Note:
17May16 / 18Nov16	
Inv.501	1 - KITCHEN: NOTE ELECTRICAL AND PLUMBING CHANGES TO KITCHEN FLOOR PLAN. SINK AND DISHWASHER HAVE MOVED OUT OF THE ISLAND. FRIDGE AND STOVE LOCATIONS HAVE BEEN SWITCHED
Line13658	Note:
17May16 / 18Nov16	
Inv.501	1 - GROUND FLOOR - OPTIONAL LAUNDRY ROOM: BUILD A ROOM FOR THE OPTIONAL LAUNDRY AREA. ADD TUB AND MAKE WASHER AND DRYER SIDE BY SIDE, INSTEAD OF STACKED. SEE SKETCH
Line13673	Note:
17May16 / 18Nov16	
Inv.501	1 - KITCHEN: INSTALL ROUGH-IN - WATERLINE FOR FRIDGE
Line13750	Note:
17May16 / 18Nov16	
Inv.501	1 - GROUND FLOOR: INSTALL OPTIONAL GROUND FLOOR ELEVATON B WITH OPTIONAL LAUNDRY ROOM MAKE WASHER AND DRYER SIDE BY SIDE, INSTEAD OF STACKED. SEE SKETCH
Line14191	Note:
17May16 / 18Nov16	

WINDOWS - BASEMENT

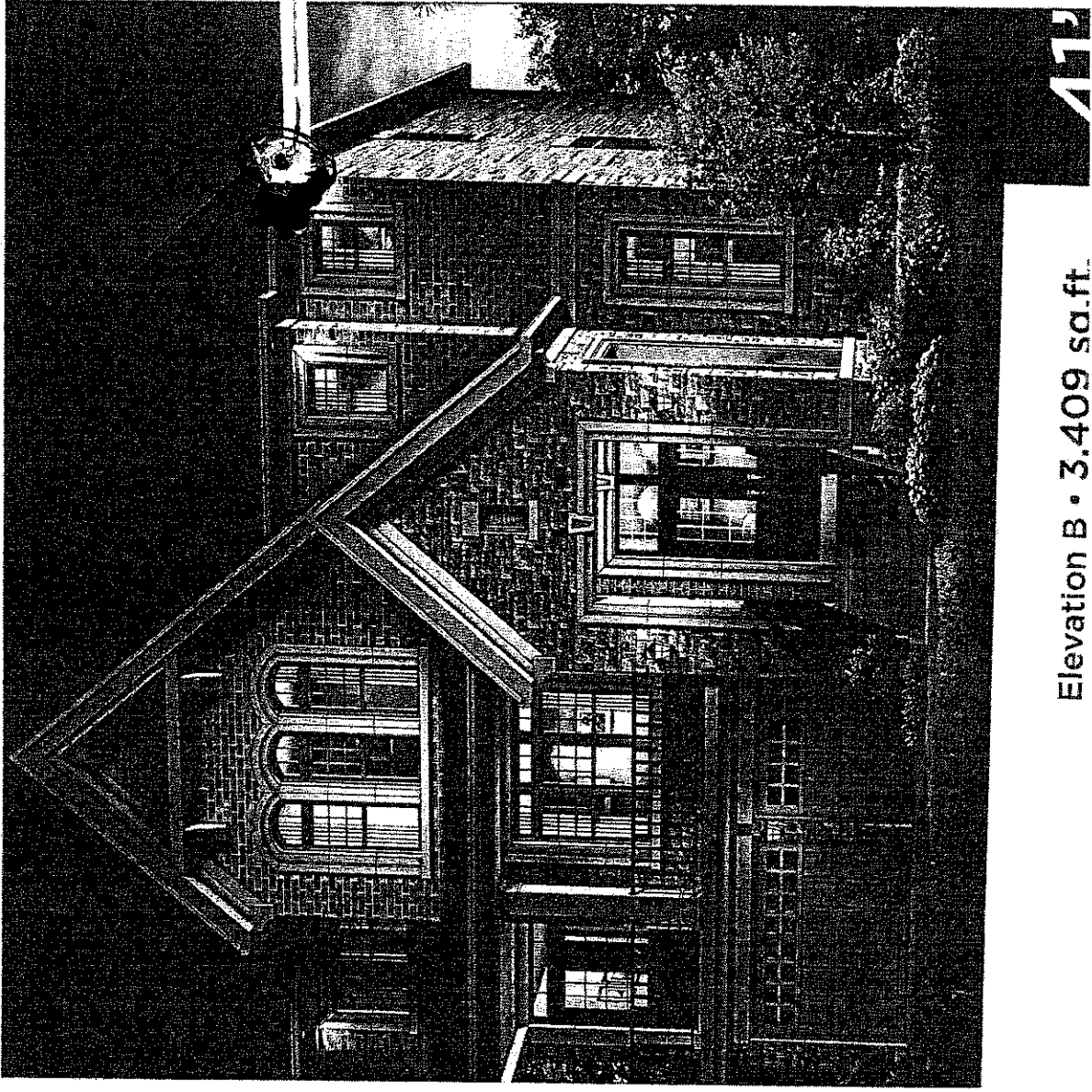
Inv.501	3 - BASEMENT: INSTALL THREE (X3) BASEMENT WINDOWS - UPGRADE EXISTING BASEMENT WINDOW TO 30 INCH X 14 INCH. SEE SKETCH
Line13751	Note:
17May16 / 18Nov16	

WINDOWS AND DOORS

Inv.501	1 - BACK DOOR- GARAGE TO EXTERIOR- AS PER PLAN AND GRADE PERMITTING
Line13726	Note:
17May16 / 18Nov16	

Brampton Encore - 122 - 1 - 41-6 Elev.B VERDI OPT - GFA1

Inv.501	1 - BREAKFAST AREA: INSTALL FRENCH DOORS IN LIEU OF PATIO SLIDERS - 6FT X 80 INCH FRENCH DOORS - NO SCREEN CLEAR GLASS
Line13746	Note:
17May16 / 18Nov16	
Inv.501	1 - BREAKFAST AREA: INSTALL SIDELITES- 1 PAIR- 12" x 80" HEIGHT ON EITHER SIDE OF FRENCH DOORS
Line13747	Note:
17May16 / 18Nov16	
Inv.995	1 - GROUND FLOOR: INSTALL FRENCH DOORS IN LIEU OF PATIO SLIDERS - 6FT X 80 INCH FRENCH DOORS - NO SCREEN CLEAR GLASS
Line14232	Note:
17Nov16 / 25Nov16	



Elevation B • 3,409 sq.ft.

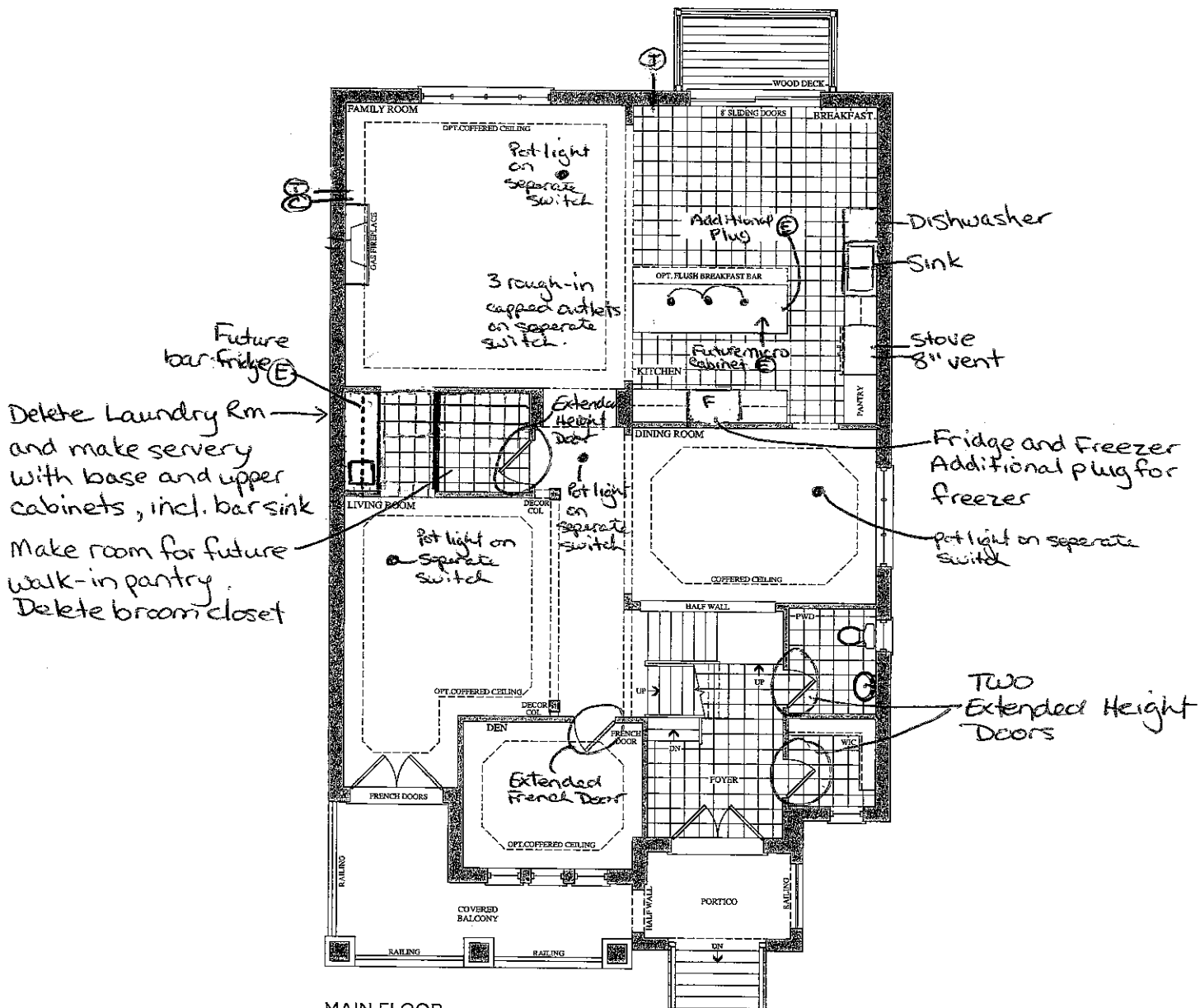
VERDI



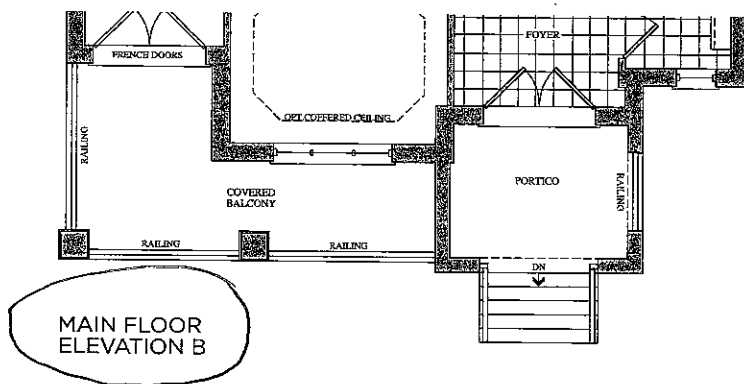
LOT 122 ENCORE
NOV 17, 2016

EXTERIOR POT LIGHT

11'



MAIN FLOOR
ELEVATION A



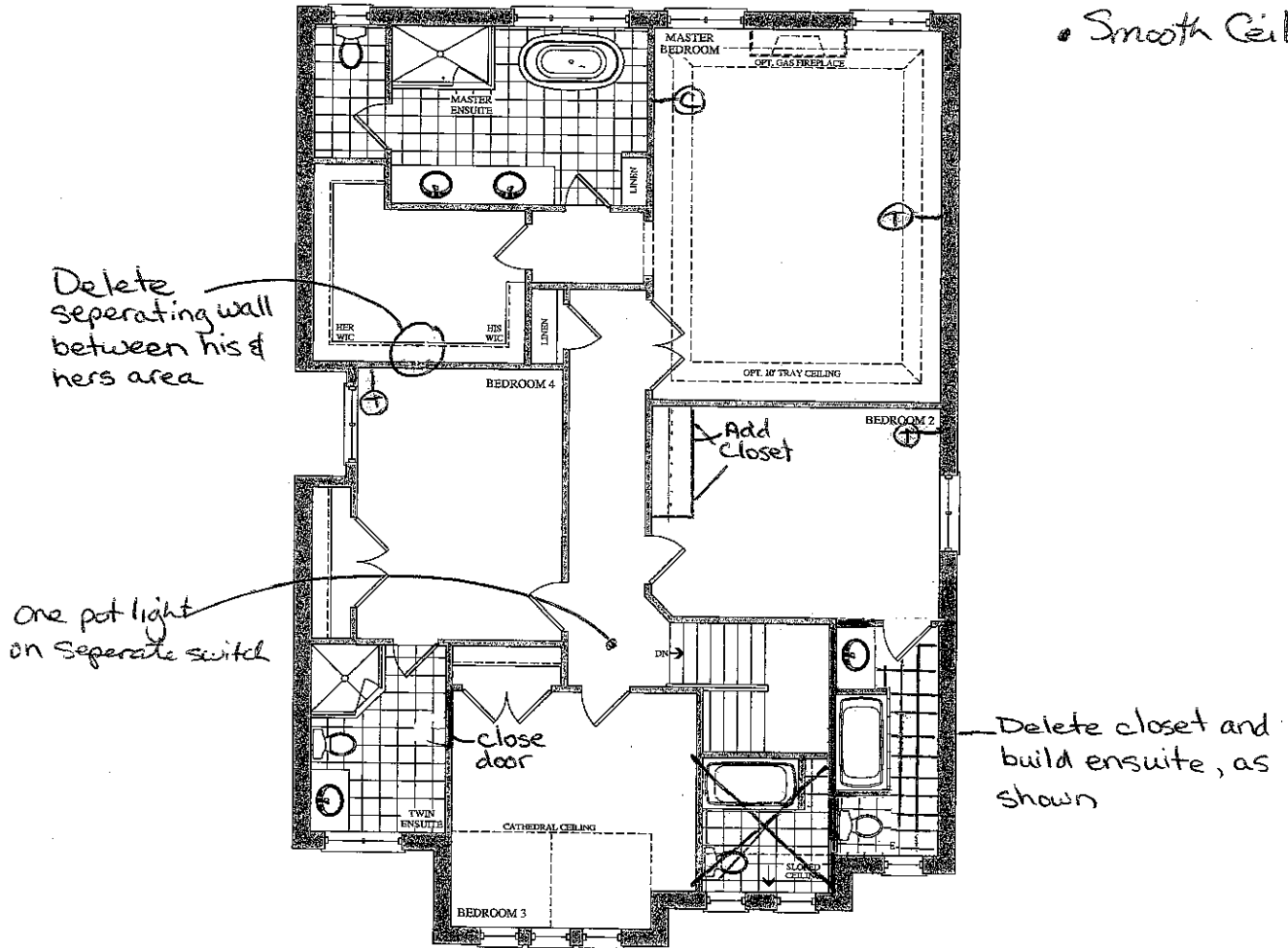
Prices, figures, illustrations, sizes, features and finishes are subject to change without notice. E.&O.E. Areas and dimensions are approximate and actual usable floor space may vary from the stated area. Layout may be reverse of the unit purchased. E. & O.E.

GOLDPARK
HOMES

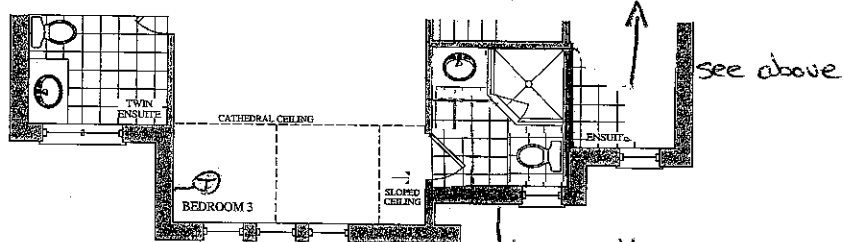
Lot 125
Nov. 10, 16

⑦ ②

• Smooth Ceilings



SECOND FLOOR
ELEVATION A



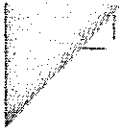
SECOND FLOOR
ELEVATION B

Prices, figures, illustrations, sizes, features and finishes are subject to change without notice. E.&O.E. Areas and dimensions are approximate and actual usable floor space may vary from the stated area. Layout may be reverse of the unit purchased. E. & O.E.

GOLDPARK
HOMES

Lot 122
Nov. 10, 16

ⓧ ⓧ



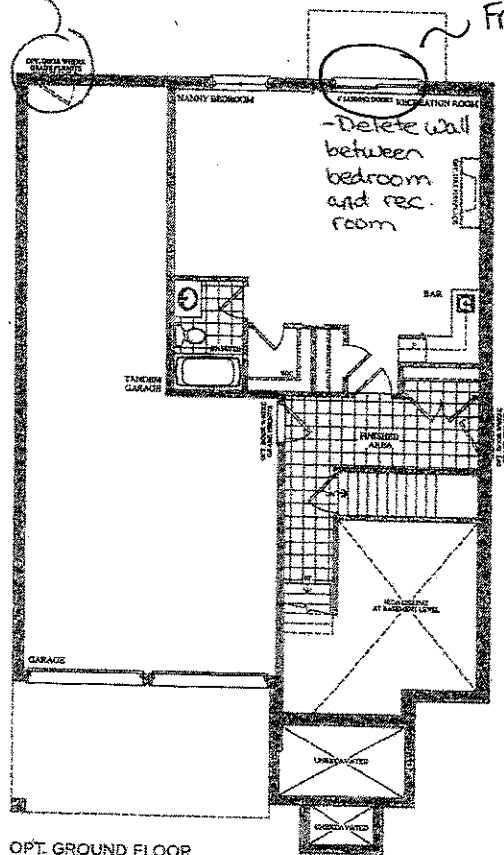
encore
BRAMPTON

- (T) Telephone
- (C) Cable
- (E) Electrical

The Verdi
41' SERIES

Elevation A • 3,940 sq.ft. | Elevation B • 3,940 sq.ft.

Back Door



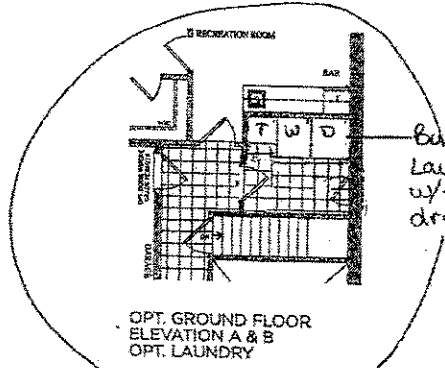
French door in lieu of patio sliders
• Smooth Ceilings

LOT 122, ENCORE



NOV. 17, 2016

OPT. GROUND FLOOR
ELEVATION A & B
3,940 SQ. FT.



Build optional
Laundry as a room
w/ side by side washer/
dryer and tub

Prices, plans, illustrations, sizes, features and finishes are subject to change without notice. E&O. Measurements and dimensions are approximate and actual usable floor space may vary from the stated area. Layout may be reverse of the unit. Enclosed, E & O.E.

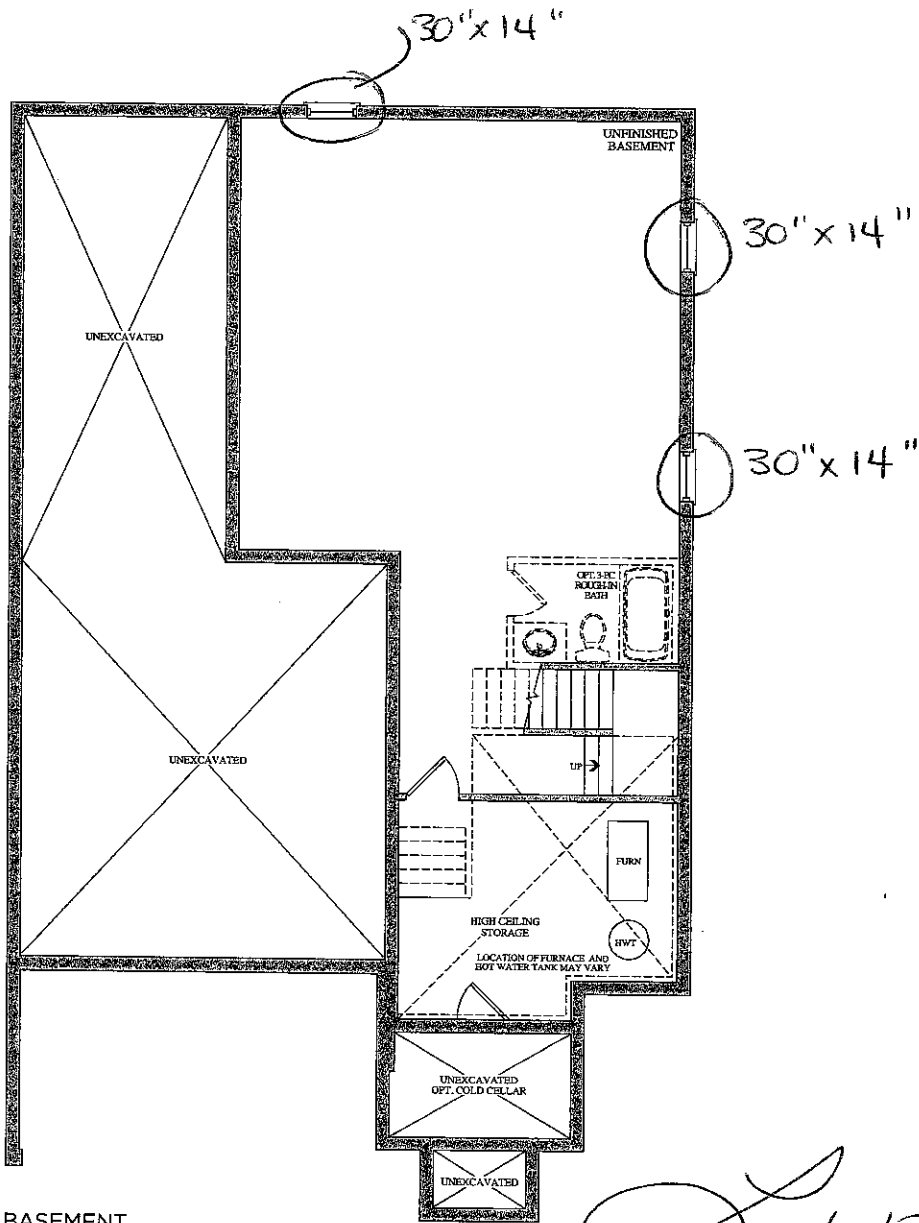
GOLDPARK
HOMES

Lot 122
Nov. 10, 16



Elevation A • 3,940 sq.ft. | Elevation B • 3,940 sq.ft.

BSMNT WINDOWS
3X 30"x 14"



BASEMENT
ELEVATION A & B

Lot 122
Nov. 10, 16
[Signature]

Prices, figures, illustrations, sizes, features and finishes are subject to change without notice. E.&O.E. Areas and dimensions are approximate and actual usable floor space may vary from the stated area. Layout may be reverse of the unit purchased. E. & O.E.



Stacey Carlete
Project Coordinator



Claude Azzopardi
Contracts Manager



Nancy Mc
Corporate C

122
Lot #



38.1 The Bizet			
Elevation	Circle One	A	2189.6 Square Feet
		B	2186.7 Square Feet
Optional Layouts	Circle All that Apply		

38.2 The Ravel			
Elevation	Circle One	A	2271.5 Square Feet
		B	2273.7 Square Feet
Optional Layouts	Circle All that Apply		

38.3 The Haydn			
Elevation	Circle One	A	2394.5 Square Feet
		B	2388.3 Square Feet
Optional Layouts	Circle All that Apply		

38.4 The Vivaldi			
Elevation	Circle One	A	2459.1 Square Feet
		B	2459.1 Square Feet
Optional Layouts	Circle All that Apply		

38.5 The Handel			
Elevation	Circle One	A	2549.2 Square Feet
		B	2554.7 Square Feet
Optional Layouts	Circle All that Apply		

38.9 The Puccini			
Elevation	Circle One	A	3628.0 Square Feet
		B	3634.7 Square Feet
Optional Layouts	Circle All that Apply	GFA1	GROUND FLOOR Optional Alternative Layout

38.6 The Scarlatti			
Elevation	Circle One	A	3521.1 Square Feet
		B	3508.1 Square Feet
Optional Layouts	Circle All that Apply	GFA1	GROUND FLOOR Optional Alternative Layout

38.7 The Schubert			
Elevation	Circle One	A	3593.8 Square Feet
		B	3610.5 Square Feet
Optional Layouts	Circle All that Apply	GFA1	GROUND FLOOR Optional Alternative Layout
		SFA4	SECOND FLOOR Additional Bedroom

38.8 The Corelli			
Elevation	Circle One	A	3801.5 Square Feet
		B	3801.5 Square Feet
Optional Layouts	Circle All that Apply	GFA1	GROUND FLOOR Optional Alternative Layout
		SFA4	SECOND FLOOR Additional Bedroom w/ Ensuite

41.1 The Strauss			
Elevation	Circle One	A	2554.2 Square Feet
		B	2571.2 Square Feet
Optional Layouts	Circle All that Apply	SFA1	SECOND FLOOR Shower in Lieu of Tub B2

41.2 The Mozart			
Elevation	Circle One	A	2725.9 Square Feet
		B	2711.1 Square Feet
Optional Layouts	Circle All that Apply	SFA1	SECOND FLOOR Shower in Lieu of Tub B2

41.3 The Chopin			
Elevation	Circle One	A	2800.0 Square Feet
		B	2810.5 Square Feet
Optional Layouts	Circle All that Apply		

41.4 The Bach			
Elevation	Circle One	A	2894.4 Square Feet
		B	2894.5 Square Feet
Optional Layouts	Circle All that Apply		

41.5 The Brahms			
Elevation	Circle One	A	3948.1 Square Feet
		B	3949.1 Square Feet
Optional Layouts	Circle All that Apply	GFA1	GROUND FLOOR Optional Alternative Layout
		SFA2	SECOND FLOOR Shower in Lieu of Tub B4
		SFA3	SECOND FLOOR Optional Laundry Layout

41.6 The Verdi			
Elevation	Circle One	A	3862.5 Square Feet
		B	3866.4 Square Feet
Optional Layouts	Circle All that Apply	GFA1	GROUND FLOOR Optional Alternative Layout
		SFA3	SECOND FLOOR Optional Laundry Layout

May 17, 16

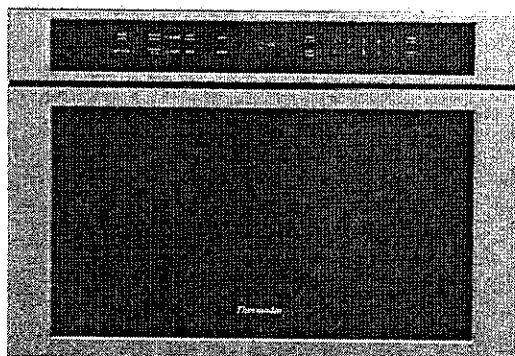


MD24JS

BUILT-IN MICROWAVE DRAWER

MASTERPIECE® & PROFESSIONAL SERIES

Thermador 
REAL INNOVATIONS FOR REAL COOKS®



FEATURES & BENEFITS

- Spacious 1.2 cu. ft. Interior fits a 20 oz. cup or a 13" x 9" pan
- 950 watts microwave power and 10 power levels
- Sensor cooking programs measure humidity and adjust cooking level and cooking time
- Touch "open" and "close"
- Perfect flush installation and hidden vent

GENERAL PROPERTIES

Cavity Color	White
Max. Microwave Power (W)	950 W

CAPACITY

Cavity Capacity (cu. ft.)	1.2 cu. ft.
Turntable Diameter (in.)	N/A

TECHNICAL DETAILS

Watts (W)	1,500 W
Circuit Breaker (A)	15 A
Volts (V)	120 V
Frequency (Hz)	60 Hz
Plug Type	120V-3 Prong
Power Cord Length (in.)	48"

DIMENSIONS & WEIGHT

Overall Appliance Dimensions (HxWxD) (in.)	16 5/16" x 23 7/8" x 23 3/8"
Required Cutout Size (HxWxD) (in.)	14 13/16" x 22 1/8" x 23 1/2"
Net Weight (Lbs)	81 lbs

ACCESSORIES (INCLUDED)

N/A

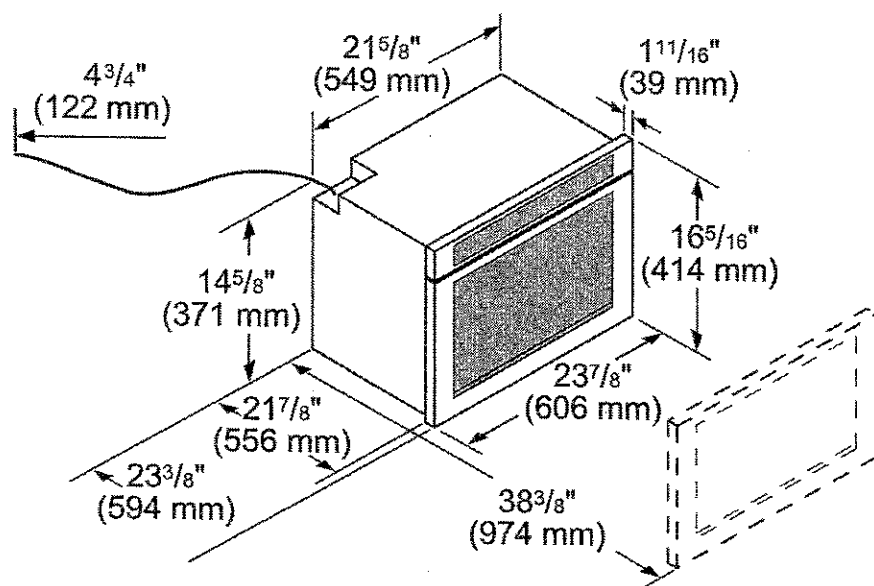
WARRANTY

Limited Warranty, Entire Appliance, Parts and Labor	2 Year
---	--------

MD24JS
BUILT-IN MICROWAVE DRAWER
MASTERPIECE® & PROFESSIONAL SERIES



PRODUCT DIMENSIONS



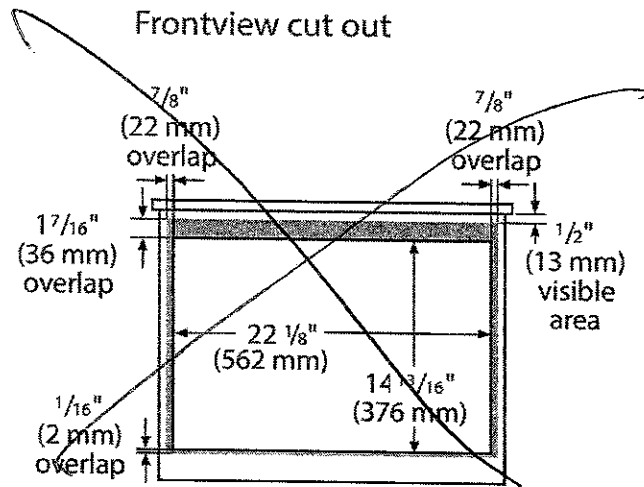
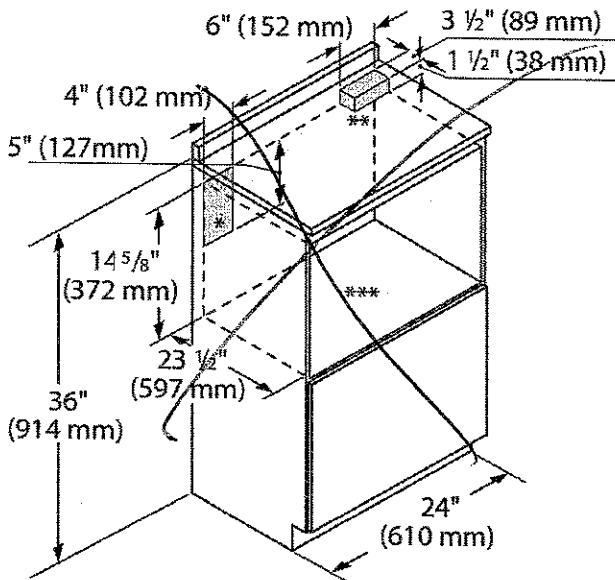
MD24JS

BUILT-IN MICROWAVE DRAWER

MASTERPIECE® & PROFESSIONAL SERIES

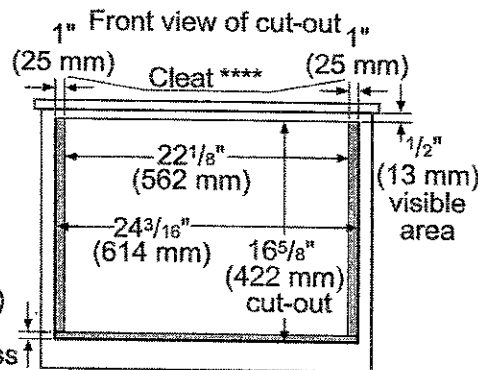
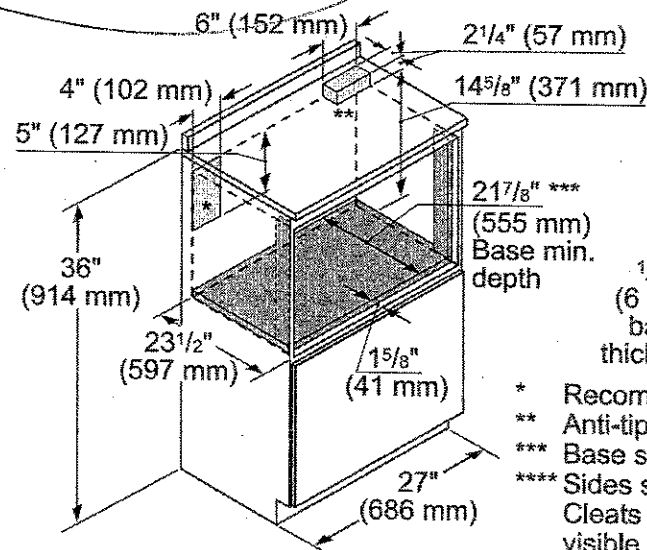


STANDARD INSTALLATION



- * Suggested location of electrical outlet
- ** Anti-Tip Block
- *** Base should support up to 100 lbs

FLUSH INSTALLATION



- * Recommended location of electrical outlet
- ** Anti-tip block
- *** Base should support up to 100 lbs
- **** Sides should be finished and extend back to cleat. Cleats should also be finished, as they may be visible after installation.

These warranties give you specific legal rights and you may have other rights that vary from state to state. Full warranty and limited warranty from date of installation. For complete warranty details, refer to your Use & Care manual, or ask your dealer.

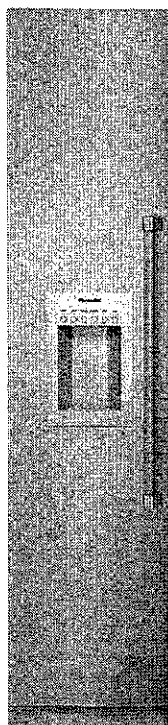
Specifications are for planning purposes only. Refer to installation instructions and consult your countertop supplier prior to making counter opening. Consult with a heating and ventilation engineer for your specific ventilation requirements. For the most detailed information, refer to installation instructions accompanying product or write to Thermador indicating the model number. Specifications are correct at time of printing. Thermador reserves the right to change product specifications or design without notice. Some models are certified for use in Canada. Thermador is not responsible for products that are transported from the U.S. for use in Canada.

T18ID800LP

18-INCH FLUSH FREEZER COLUMN WITH EXTERNAL ICE & WATER DISPENSER

FREEDOM® COLLECTION, PANEL-READY, LEFT-HAND DOOR SWING

Thermador 
REAL INNOVATIONS FOR REAL COOKS®



Also Available:

T18ID800RP - Right-Hand Door Swing

FEATURES & BENEFITS

- Freedom® Hinge enables true flush design
- All-stainless steel exterior dispenser
- Full-height door-true cabinet integration without exposed venting grille
- All-LED sidewall and theater lighting
- Brightspace interior design

TEMPERATURE RANGES

Freezer	-9°F (-23°C) to 7°F (-14°C)
SuperFreeze®	-9°F (-23°C) for approximately 52 hours
Energy Saving (Economy) Mode	3°F (-16°C)

ACCESSORIES (OPTIONAL)

Stainless Steel Panel Options:

TFL18ID800 - Flat Stainless Steel Panel w/Dispenser

TCH18ID800 - Chiseled Stainless Steel Panel w/Dispenser

Handle Options:

PR36HNDL10 - 36-Inch Professional

MS36HNDL10 - 36-Inch Masterpiece®

FRAMEKIT10 - Freedom® Frame Kit

HEATRKIT10 - Freedom® Heater Kit

Filters:

REPLFLTR10 - Freedom® Water Filter

SCRNFLTR10 - Filter By-Pass

GENERAL PROPERTIES

Panel Ready	Yes
Reversible Door Swing	No
Lighting	All-LED Sidewall and Theater Lighting
Full Width Shelves	2
Adjustable Shelves	2
Shelf Material	Metal
Full Extension Drawers at 90° Door Opening Angle	Yes
Door Bins	2
LED-Illuminated Dispenser	Yes
Oversized Dispenser Opening	Yes
Chilled Water, Crushed And Cubed Ice	Yes
Rapid Water Replenishment System	Yes
Ice Maker with Freeflow® Ice System	Yes
Door Open Alarm	Yes
Special Modes	Sabbath, Economy, Vacation

CAPACITY

Total Unit Gross Capacity (cu. ft.) - AHAM	8.4 cu. ft.
Freezer Gross Capacity (cu. ft.)	8.4 cu. ft.

PERFORMANCE

Dedicated Evaporator & Compressor System	Yes
SuperFreeze®	Yes
Defrost Process	Frost-Free

TECHNICAL DETAILS

Watts (W)	506 W
Current (A)	15 A
Volts (V), Frequency (Hz)	120 V, 60 Hz
Power Cord Length (in.)	78 3/4"
Plug Type	120V-3 Prong

DIMENSIONS & WEIGHT

Appliance Dimensions (H x W x D) (in.)	84" x 17 3/4" x 24"
Required Cutout Size (H x W x D) (in.)	84" x 18" x 24 3/4"
Net Weight (lbs)	278 lbs

EFFICIENCY

ENERGY STAR® Qualified	Yes
Annual Energy Consumption	440 kWh

WARRANTY

Limited, Entire Appliance, Parts and Labor on Any Part of the Refrigerator that Fails Because of a Manufacturing Defect	2 Year
Limited Warranty for Sealed Refrigeration System*; Parts And Labor	3rd to 6th Year
Limited Warranty for Sealed Refrigeration System*; Parts Only	7th to 12th Year

* Sealed refrigeration system includes compressor, evaporator, condenser, dryer / strainer and connection tubing

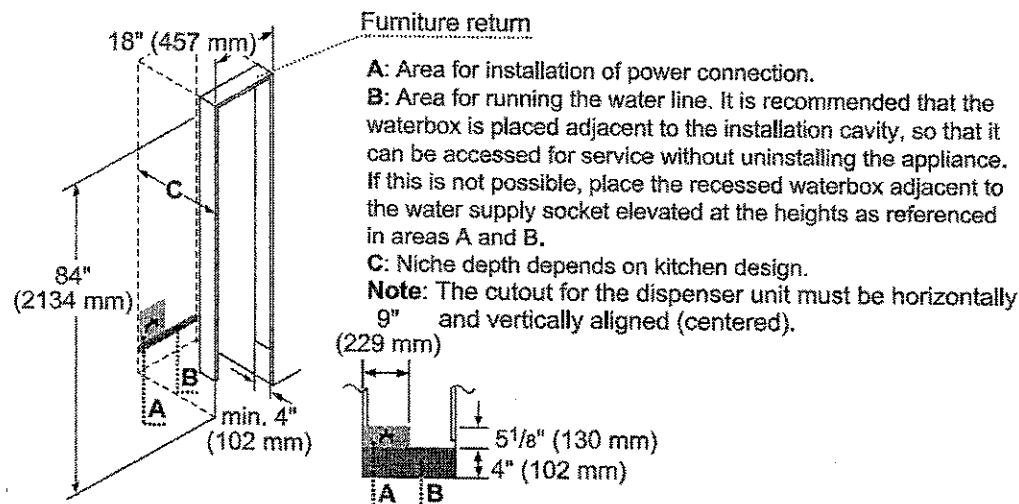
T18ID800LP

18-INCH FLUSH FREEZER COLUMN WITH EXTERNAL ICE & WATER DISPENSER

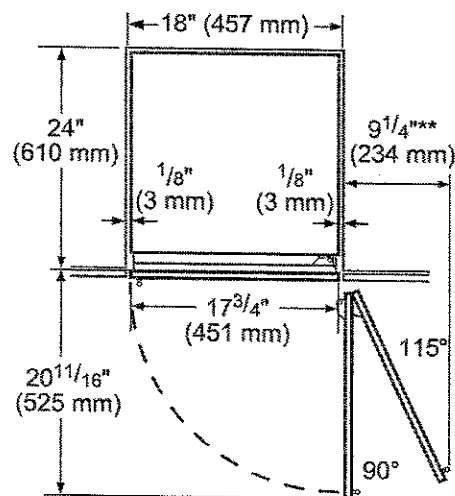
FREEDOM® COLLECTION, PANEL-READY, LEFT-HAND DOOR SWING



CUTOUT DIMENSIONS

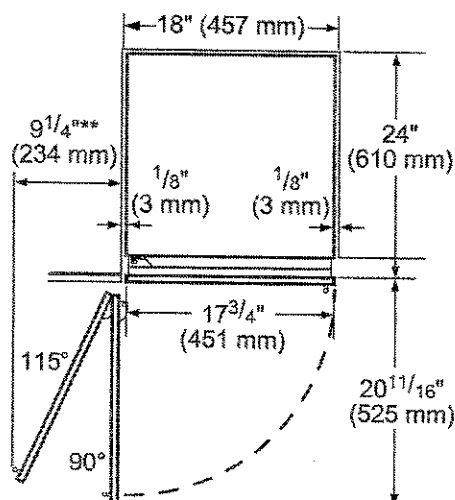
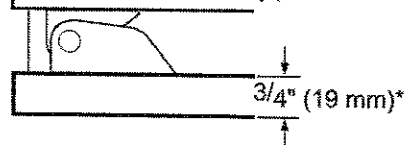


TOP VIEW CLEARANCE



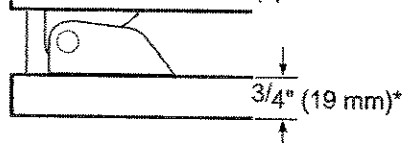
** Door handle must be added to this dimension

* Depends on the thickness of the furniture door.
 3/4" (19 mm) is relevant for the stainless steel door. (special Accessory).



** Door handle must be added to this dimension

* Depends on the thickness of the furniture door.
 3/4" (19 mm) is relevant for the stainless steel door. (special Accessory).



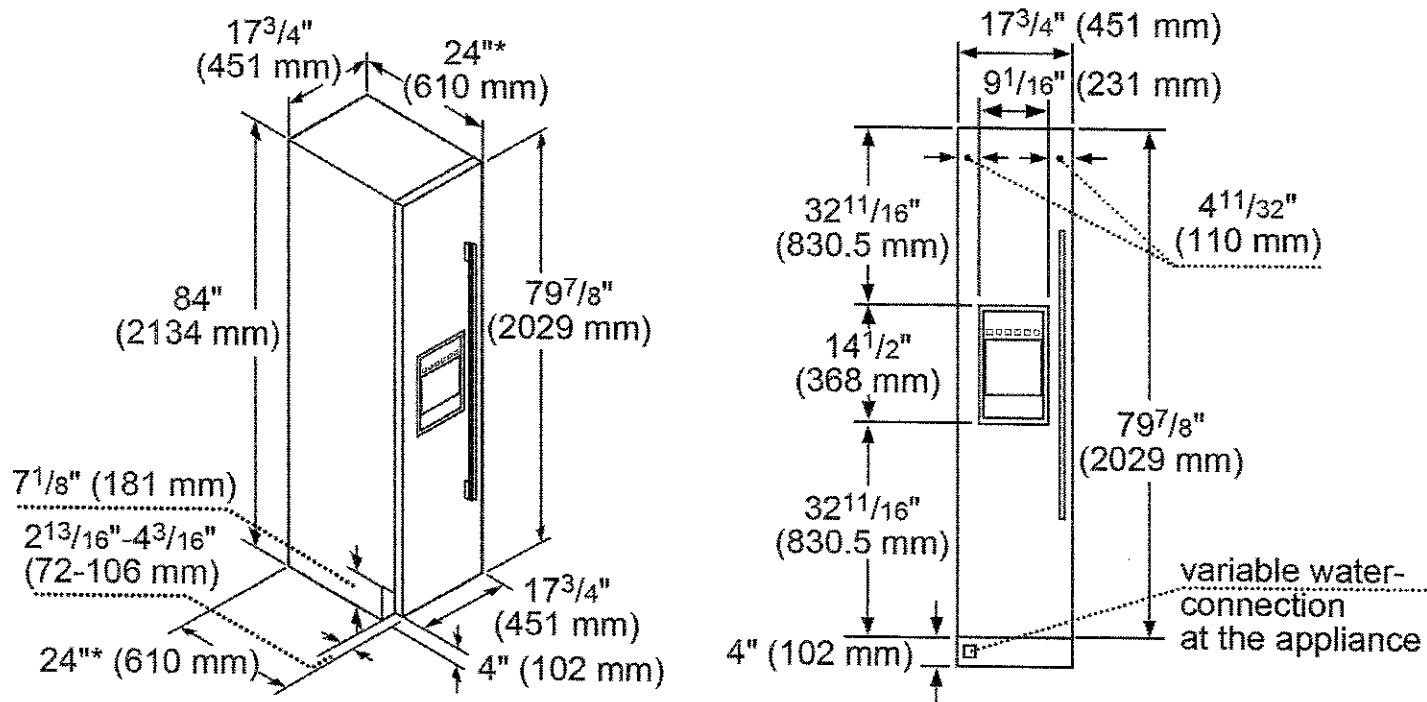
T18ID800LP

18-INCH FLUSH FREEZER COLUMN WITH EXTERNAL ICE & WATER DISPENSER

FREEDOM® COLLECTION, PANEL-READY, LEFT-HAND DOOR SWING



PANEL DIMENSIONS



*Excludes thickness of door panel. If standard panel with $\frac{3}{4}$ " thickness is mounted, total depth is $24 \frac{3}{4}$ ".

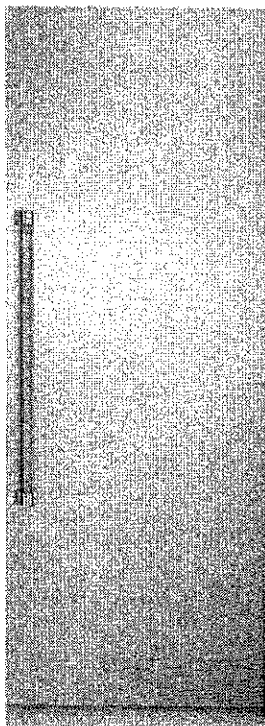
These warranties give you specific legal rights and you may have other rights that vary from state to state. Full warranty and limited warranty from date of installation. For complete warranty details, refer to your Use & Care manual, or ask your dealer.

Specifications are for planning purposes only. Refer to installation instructions and consult your countertop supplier prior to making counter opening. Consult with a heating and ventilation engineer for your specific ventilation requirements. For the most detailed information, refer to installation instructions accompanying product or write to Thermador indicating the model number. Specifications are correct at time of printing. Thermador reserves the right to change product specifications or design without notice. Some models are certified for use in Canada. Thermador is not responsible for products that are transported from the U.S. for use in Canada.

T30IR800SP

30-INCH FLUSH CUSTOM FRESH FOOD COLUMN

FREEDOM® COLLECTION, PANEL-READY



FEATURES & BENEFITS

- Freedom® Hinge enables true flush design
- Full-height door-true cabinet integration without exposed venting grille
- Brightspace interior design with All-LED sidewall and theater lighting
- FLEXTEMP® drawer providing the ultimate in preservation
- Accepts custom or stainless steel panels

TEMPERATURE RANGES

Refrigerator	35°F (2°C) to 46°F (8°C)
Temperature Controlled Drawer	Fish 32°F (0°C) Meat 35°F (1.5°C) Produce 37°F (3°C)
Deli Drawer	Just above 32°F (0°C)
SuperCool	35.5°F (2°C) for approximately 9 hours
Energy Saving (Economy) Mode	45°F (7°C)

ACCESSORIES (OPTIONAL)

Stainless Steel Panel Options:
 TFL30IR800 - Flat Stainless Steel
 TCH30IR800 - Chiseled Stainless Steel

Handle Options:
 PR36HNDL10 - 36-Inch Professional
 MS36HNDL10 - 36-Inch Masterpiece®

FRAMEKIT10 - Freedom® Frame Kit
 HEATRKIT10 - Freedom® Heater Kit

GENERAL PROPERTIES

Panel Ready	Yes
Reversible Door Swing	Yes
Carbon Air Filter	Yes
Lighting	All-LED Sidewall and Theater Lighting
Full Width Shelves	4
Adjustable Shelves	3
Shelf Material	Glass w/Metal Trim
Full Extension Drawers at 90° Door Opening Angle	Yes
Temperature Controlled Drawer	Yes
Humidity Control Drawer	Yes
Door Bins	4
Gallon Door Bins	Yes
Door Open Alarm	Yes
Special Modes	Sabbath, Economy, Vacation

CAPACITY

Total Unit Gross Capacity (cu. ft.) - AHAM	17.2 cu. ft.
Refrigerator Gross Capacity (cu. ft.)	17.2 cu. ft.

PERFORMANCE

Dedicated Evaporator & Compressor System	Yes
Freeflow® Cold Air System	Yes
SuperCool	Yes

TECHNICAL DETAILS

Watts (W)	180 W
Current (A)	15 A
Volts (V)	120 V
Frequency (Hz)	60 Hz
Power Cord Length (in.)	78 3/4"
Plug Type	120V 3-Wire

DIMENSIONS & WEIGHT

Appliance Dimensions (H x W x D) (in.)	84" x 29 3/4" x 24"
Required Cutout Size (H x W x D) (in.)	84" x 30" x 24 3/4"
Net Weight (lbs)	332 lbs

EFFICIENCY

ENERGY STAR® Qualified	Yes
Annual Energy Consumption	310 kWh

WARRANTY

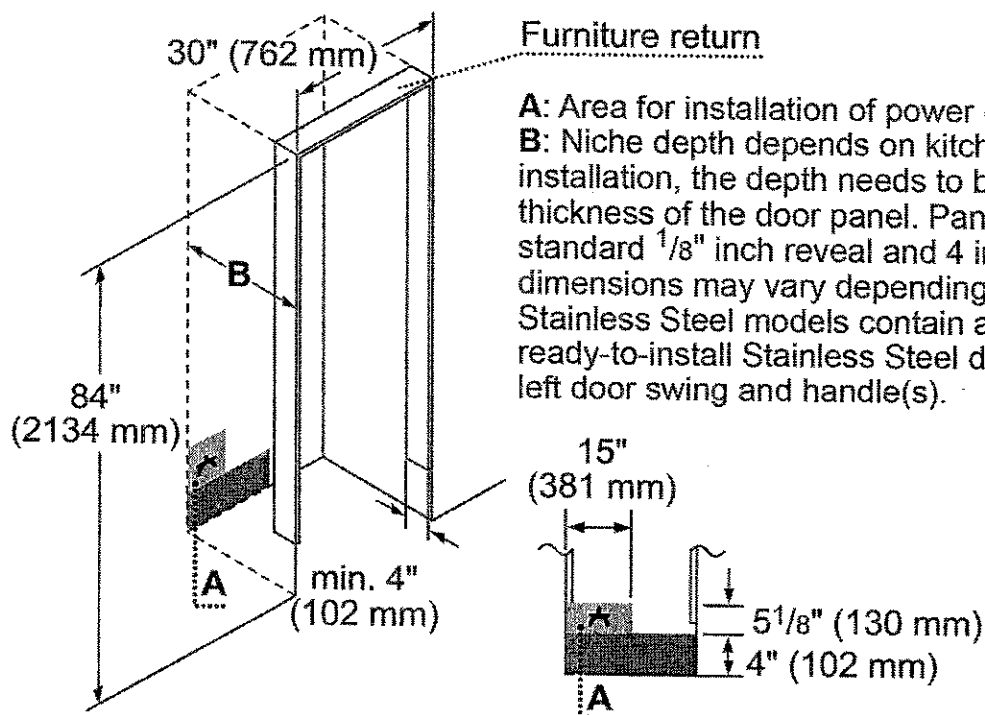
Limited, Entire Appliance, Parts and Labor on Any Part of the Refrigerator that Fails Because of a Manufacturing Defect	2 Year
Limited Warranty for Sealed Refrigeration System*; Parts and Labor	3rd to 6th Year
Limited Warranty for Sealed Refrigeration System*; Parts Only	7th to 12th Year

* Sealed refrigeration system includes compressor, evaporator, condenser, dryer / strainer and connection tubing

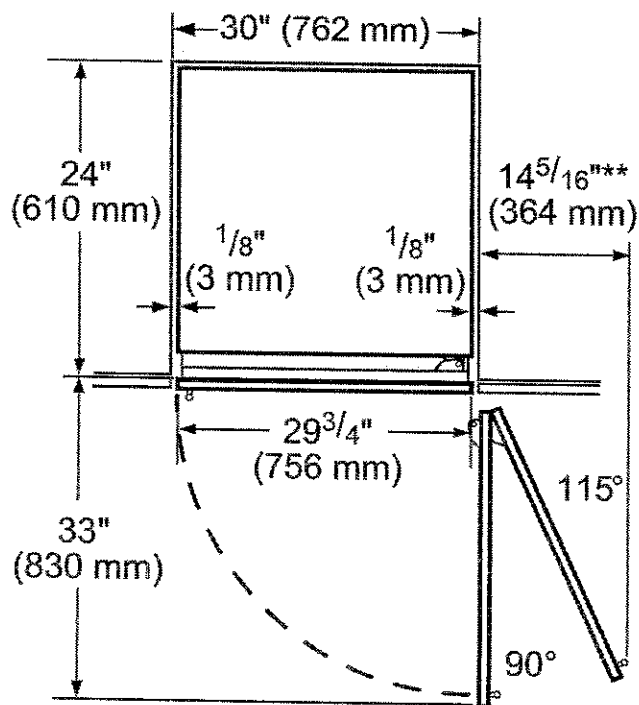
T30IR800SP
30-INCH FLUSH CUSTOM FRESH FOOD COLUMN
 FREEDOM® COLLECTION, PANEL-READY



CUTOUT DIMENSIONS

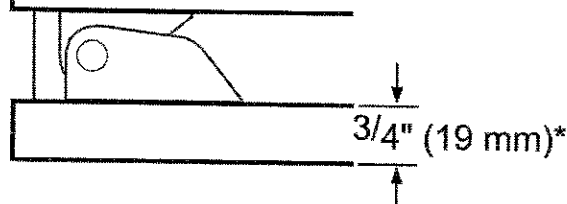


TOP VIEW CLEARANCE



****** Door handle must be added to this dimension

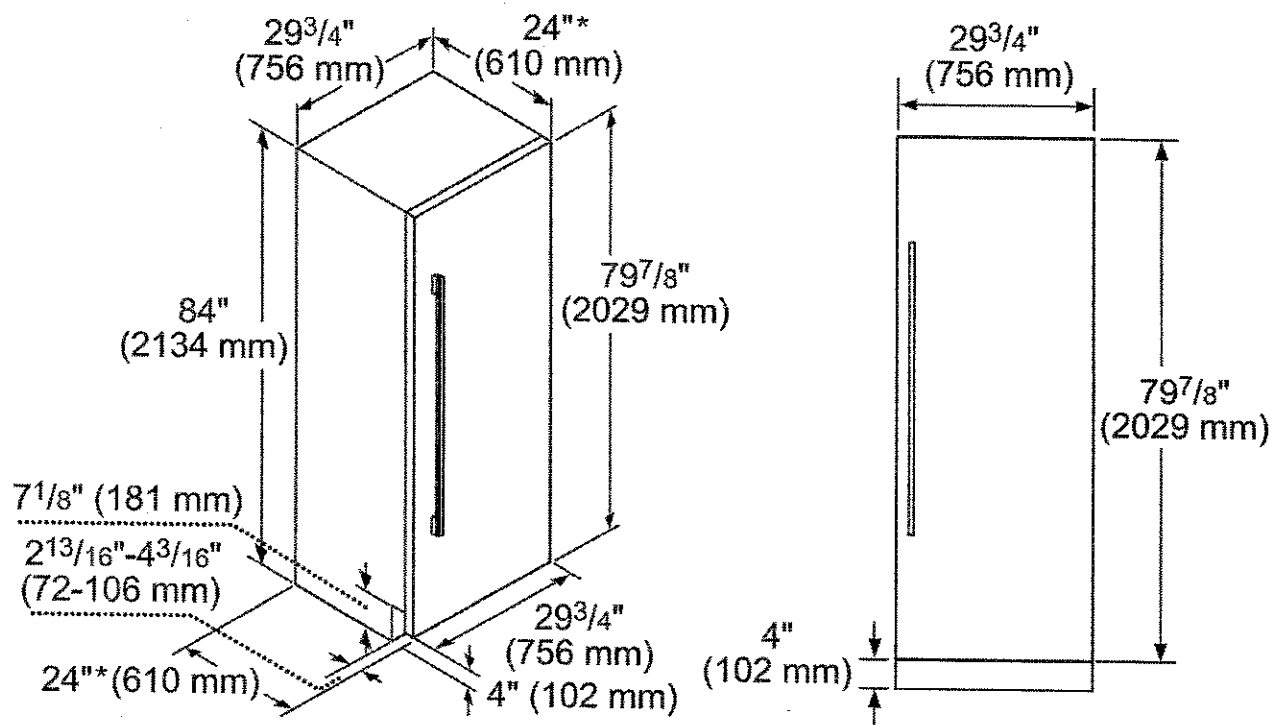
***** Depends on the thickness of the furniture door. $\frac{3}{4}$ " (19 mm) is relevant for the stainless steel door. (special Accessory).



T30IR800SP
30-INCH FLUSH CUSTOM FRESH FOOD COLUMN
 FREEDOM® COLLECTION, PANEL-READY



PANEL DIMENSIONS



*Excludes thickness of door panel. If standard panel with ³/₄" thickness is mounted, total depth is 24 ³/₄".

These warranties give you specific legal rights and you may have other rights that vary from state to state. Full warranty and limited warranty from date of installation. For complete warranty details, refer to your Use & Care manual, or ask your dealer.

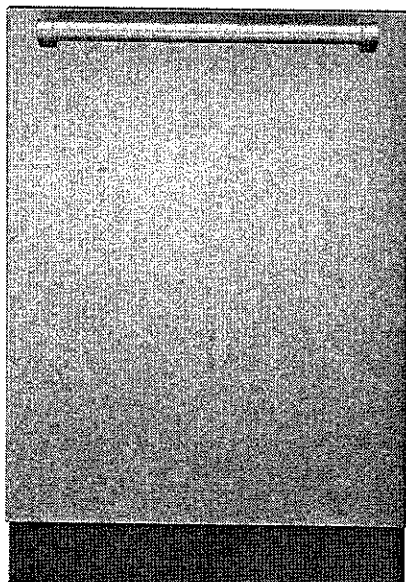
Specifications are for planning purposes only. Refer to installation instructions and consult your countertop supplier prior to making counter opening. Consult with a heating and ventilation engineer for your specific ventilation requirements. For the most detailed information, refer to installation instructions accompanying product or write to Thermador indicating the model number. Specifications are correct at time of printing. Thermador reserves the right to change product specifications or design without notice. Some models are certified for use in Canada. Thermador is not responsible for products that are transported from the U.S. for use in Canada.

DWHD651JFP

STAR-SAPPHIRE® 6-PROGRAM DISHWASHER

PROFESSIONAL SERIES HANDLE

Thermador 
REAL INNOVATIONS FOR REAL COOKS®



Also Available In:

DWHD651JFM - Flat Stainless Steel Panel

with Masterpiece® Series Handle

DWHD651JPR - Custom Panel

FEATURES & BENEFITS

- ★ - Star Speed® is a full wash cycle in just 20 minutes— industry fastest
- ★ - Largest wine glass capacity—18 large wine glasses
- Piezo touch control communicates slick design and performance
- Time remaining PowerBeam® shines the actual remaining time of the cycle on the floor
- ★ - Sapphire Glow® light illuminates with the sparkling blue light when the dishwasher is open

ACCESSORIES (OPTIONAL)

Dishwasher Softener Salt (4.4 lbs)	SGZ9091UC
Dishwasher Supply and Drainage Hose Extension 76 3/4"	SGZ1010
Dishwasher Accessory Kit	SMZ5000
Fine Silverware Carafe	SMZ5002UC
Rack insert for stemware	SMZ2014
Power Cord with Connectors*	SGZPC001UC

*Use only this power cord for plug / receptacle connections



Accessory Kit includes Extra-tall-item Sprinkler, Vase / Bottle Holder, 3 Plastic Item Clips and Small Item Basket



Fine Silverware Carafe

GENERAL PROPERTIES

Number Of Wash Cycles	6
Number Of Options	5
dBA	44
Third Rack	Flexible
Rack Adjustability	Rackmatic 3-Stage
Tub Material	Stainless Steel
Control Type	Touch Controls
Concealed Heating Element	Yes
Leak Protection System	24/7 AquaStop® Plus
Water Softener	Yes
Five-Level Wash	Yes
Childlock	No

EFFICIENCY

Water Usage Per Cycle (g)	2.2 g
Energy Efficiency Class	Tier 1
ENERGY STAR® Qualified	Yes
Total Annual Energy Consumption (kWh)	260 kWh
Total Annual Water Consumption (g)	613 g

CAPACITY

Number Of Place Settings	14
--------------------------	----

TECHNICAL DETAILS

Watts (W)	1,300 W
Current (A)	12 A
Volts (V)	120 V
Frequency (Hz)	60 Hz
Power Cord Length (in)	47 1/4"
Minimum Water Pressure (lb/sin)	7
Max. Temperature for Water Intake	140° F
Length Inlet Hose (in)	55 1/8"
Length Outlet Hose (in)	55 1/8"

DIMENSIONS & WEIGHT

Overall Appliance Dimensions (HxWxD) (in)	34 1/8" x 23 9/16" x 22 7/16"
Required Cutout Size (HxWxD) (in)	34 1/8" x 24" x 24"
Adjustable Feet	Yes
Net Weight (lbs)	102 lbs

ACCESSORIES (INCLUDED)

Baking-Sheet Spray Head Grey

WARRANTY

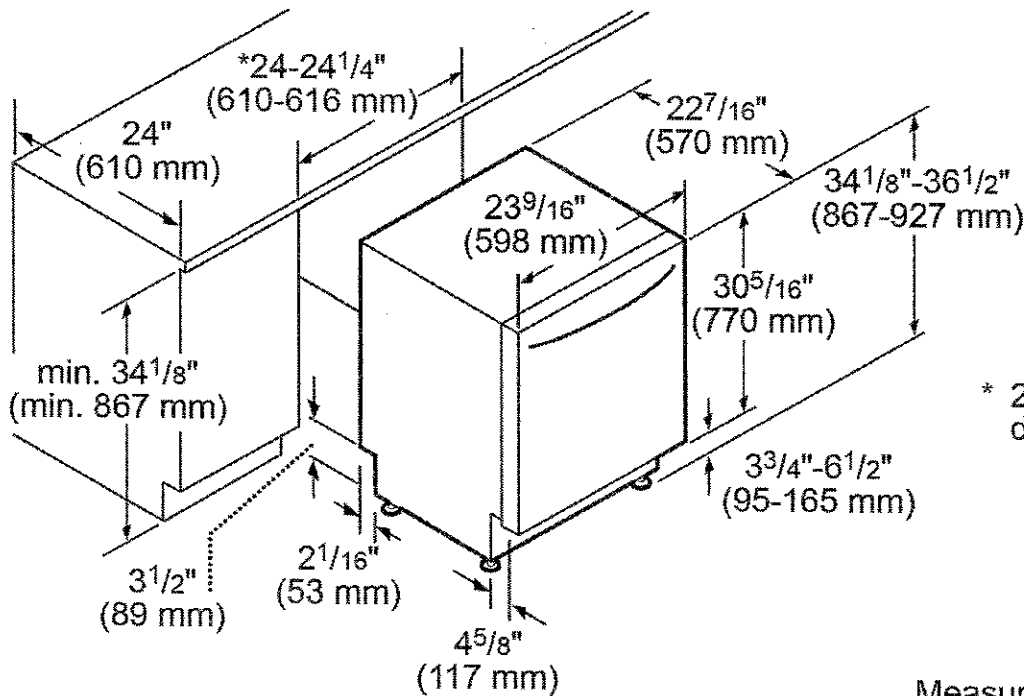
Full Warranty, Entire Appliance, Parts and Labor	2 Year
Limited Warranty for Microprocessor or Printed Circuit Board; Parts Only	3rd to 5th Year
Limited Warranty for Racks (Does Not Include Rack Components); Parts Only	3rd to 5th Year
Limited Warranty for Rust-through On Inner Tub Liner; Parts Only	Lifetime

★ THERMADOR EXCLUSIVE

DWHD651JFP
STAR-SAPPHIRE® 6-PROGRAM DISHWASHER
 PROFESSIONAL SERIES HANDLE



DISHWASHER & CUTOUT DIMENSIONS



* 23⁵/₈" (600 mm) without decor strips

Measurements in inches and mm

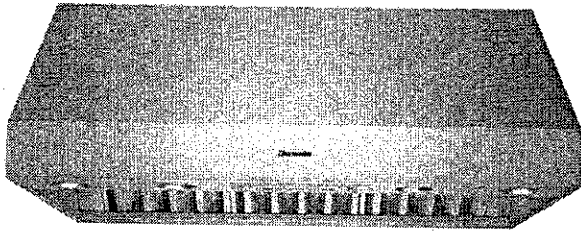
These warranties give you specific legal rights and you may have other rights that vary from state to state. Full warranty and limited warranty from date of installation. For complete warranty details, refer to your Use & Care manual, or ask your dealer.

Specifications are for planning purposes only. Refer to installation instructions and consult your countertop supplier prior to making counter opening. Consult with a heating and ventilation engineer for your specific ventilation requirements. For the most detailed information, refer to installation instructions accompanying product or write to Thermador indicating the model number. Specifications are correct at time of printing. Thermador reserves the right to change product specifications or design without notice. Some models are certified for use in Canada. Thermador is not responsible for products that are transported from the U.S. for use in Canada.

PH48GS
27-INCH DEPTH WALL HOOD (48-INCH WIDTH)
PROFESSIONAL SERIES

* Note on picture of hood fan - attached to the end of all the spec sheets - that they want a box built over it.

Thermador ★
 REAL INNOVATIONS FOR REAL COOKS™



42-inch model PH42GS shown

FEATURES & BENEFITS

- Three fan speeds
- Auto function senses heat from the cooking surface and adjusts fan speeds
- Powerfully Quiet ventilation systems
- Extended capture area ensures removal of smoke and odor
- Built-in 'Clean Filter' reminder light illuminates after 40 hours of operation
- 27" depth hood is a perfect companion to the Pro Grand Professional Range

ACCESSORIES (OPTIONAL)

25 ft. Blower Connector Cable - EXTNCB25

For use with the following Inline and Remote Blowers: VTR630P, VTR1030P, VTR1330P, VTI610P, VTI1010P

Roofplates

RFPLT600P - For use with 600 CFM Remote Blower VTR630P

RFPLT1000P - For use with 1000 CFM Remote Blower VTR1030P and 1300 CFM Blower VTR1330P

48" W Keep-Hot Shelf	KHS48QS
48" W, 6" H Stainless Steel Duct Cover	DC48US
48" W, 12" H Stainless Steel Duct Cover	DCT48US
48" W Stainless Steel Backsplash	PA48JBS
Roof Jack and Transition	RJ310
10" Wall Cap	WC10

GENERAL PROPERTIES

Operating Mode	Ducted
Maximum CFM	N/A
Number of Speed Settings	3-Stage
Motor Location	Blower (Sold Separately)
Number Of Lights	4
Bulb Type	40 W - G9 Base
Total Power Of The Lamps (W)	160 W
Damper Included	Yes
Grease Filter Material	Washable Stainless Steel
Grease Filter Type	Commercial-Style Baffle

TECHNICAL DETAILS

Watts (W)	N/A
Current (A)	15; 20 A
Volts (V)	120 V
Frequency (Hz)	60 HZ
Plug Type	120V-3 Prong

DIMENSIONS & WEIGHT

Overall Appliance Dimensions (Width Of Canopy Included) (HxWxD) (in)	18" x 47 15/16" x 27"
Required Distance Above Cooktop / Range Cooking Surface	30" / 30"
Diameter of Air Duct (in) Top	10"
Diameter of Air Duct (in) Back	10"
Net Weight (lbs)	98 lbs

ACCESSORIES (REQUIRED)

Blower (Sold Separately)

BLOWER OPTIONS

Remote Blower (Mounted to Roof or External Wall)	VTR630P - 600 CFM
	VTR1030P - 1000 CFM
	VTR1330P - 1300 CFM
Inline Blower (Mounted Between Kitchen and External Wall)	VTI610P - 600 CFM
	VTI1010P - 1000 CFM
Integrated Blower (Mounted in Hood)	VTN630N - 600 CFM
	VTN1030N - 1000 CFM

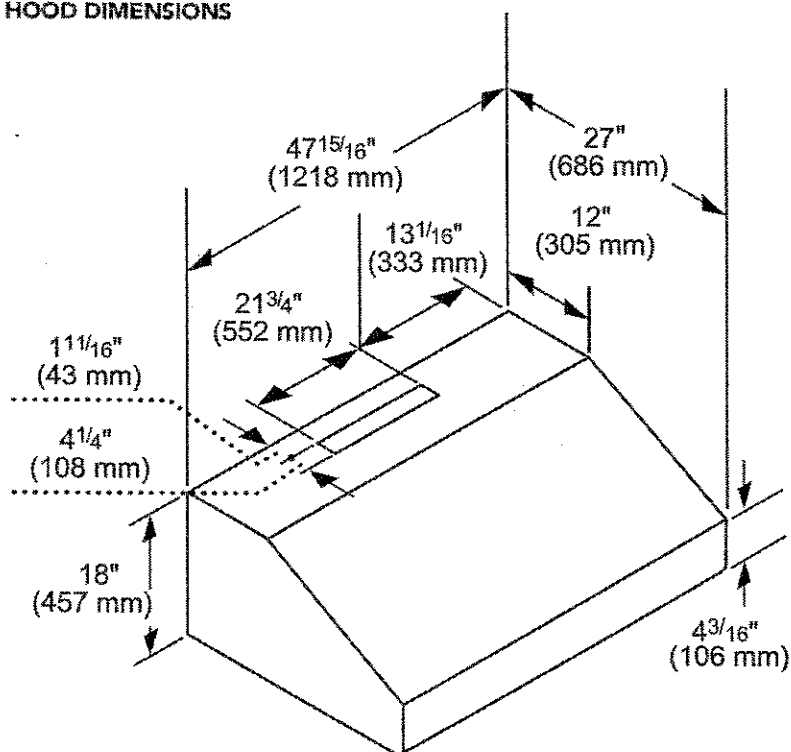
WARRANTY

Limited Warranty Parts And Labor	2 Year
----------------------------------	--------

PH48GS
27-INCH DEPTH WALL HOOD (48-INCH WIDTH)
PROFESSIONAL SERIES



HOOD DIMENSIONS



measurements in inches and mm

PH48GS

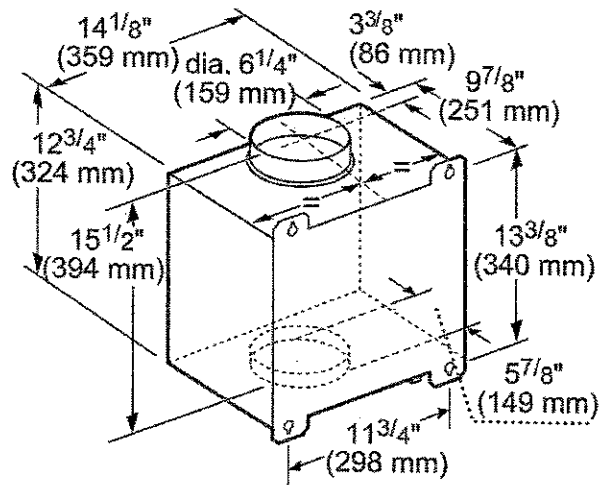
27-INCH DEPTH WALL HOOD (48-INCH WIDTH)

PROFESSIONAL SERIES



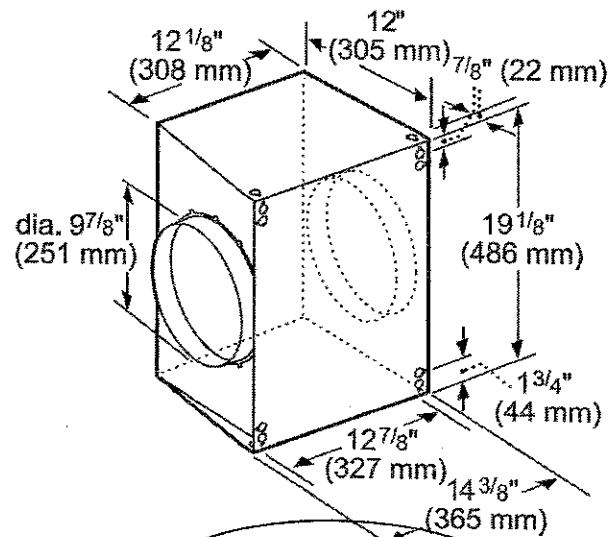
INLINE BLOWERS (MOUNTED BETWEEN KITCHEN AND EXTERNAL WALL)

VTI610P-600 CFM



measurements in inches and mm

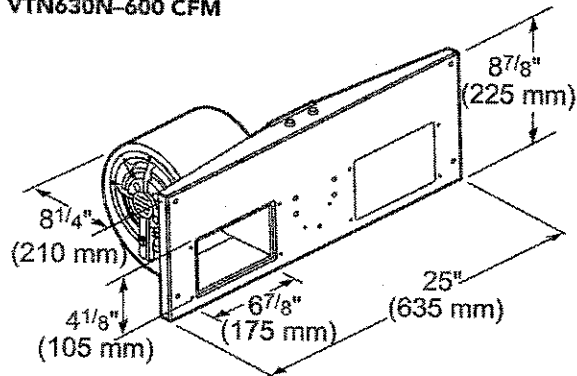
VTI1010P-1000 CFM



measurements in inches and mm

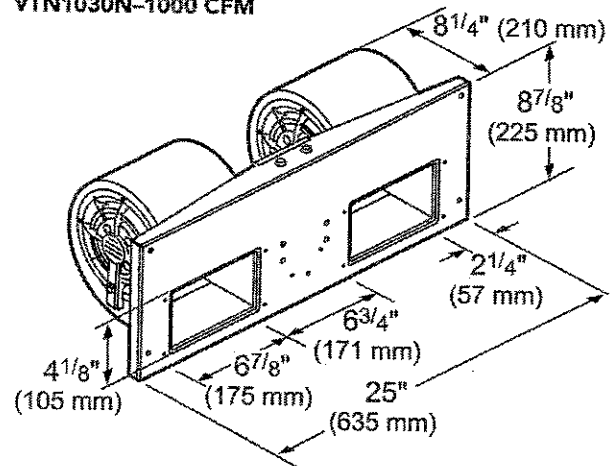
INTEGRATED BLOWERS (MOUNTED IN HOOD)

VTN630N-600 CFM



measurements in inches and mm

VTN1030N-1000 CFM



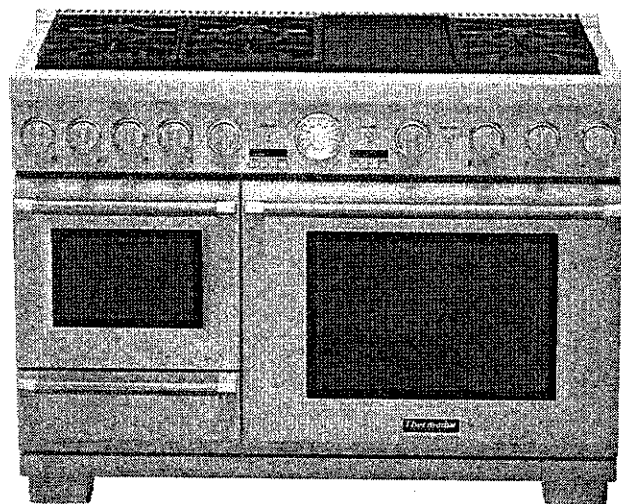
PRD48JDSGU

48-INCH DUAL-FUEL PRO GRAND® RANGE

WITH STEAM AND GRIDDLE

PROFESSIONAL SERIES, COMMERCIAL-DEPTH, PORCELAIN COOKTOP SURFACE

Thermador 
REAL INNOVATIONS FOR REAL COOKS®



FEATURES & BENEFITS

- ★ The only professional range on the market with a built-in steam oven and warming drawer
- ★ 27 Easy Cook® food programs. Pre-programmed modes automatically set the oven temperature and humidity to ensure perfect cooking results
- ★ Patented Pedestal Star® Burner with QuickClean Base® designed for easy surface cleaning and superior heat spread for any size pan
- ★ Powerful 22,000 BTU (NG) burner (front right)
- ★ Precision simmering capabilities as low as 100°F (375 BTU) with 4 ExtraLow® Simmer burners

TECHNICAL DETAILS

Circuit Breaker (A)	50 A
Volts (V)	240 / 208 V
Frequency (Hz)	60 Hz
Plug Type	No Plug
Power Cord Length (in)	Purchase Separately
Energy Source	Gas and Electric
Gas Type	Natural Gas 15 mbar (USA)
Alternative Gas Type	Liquid Gas 27.5 mbar (USA)

SEE PAGE 2 FOR OPTIONAL ACCESSORIES

GENERAL PROPERTIES

Oven Capacity	5.1 / 1.4 cu. ft.
Cooking Modes - Main / Large Cavity	Bake, Convection Bake, Broil, Convection Broil, Roast, Convection Roast, Self clean, Keep Warm
Cooking Modes - Small Cavity	Steam, True Convection, Steam/Convection, Reheat, Proof, Slow Cook, Defrost, Easy Cook®
Additional Features	Meat Probe, Sabbath Function, Cook Timer, Kitchen Timer
Cleaning Type	Self Clean (Primary)
Type of Grate	Continuous Cast Iron
Controls	Metal Knobs and LCD Display
Warming Drawer	1.1 cu. ft. - Low, Med, High
Sealed Burners	Yes

OVEN PERFORMANCE

Bake Power	2,000 W (Lg) / 1,960 W (Sm)
Broil Power	4,000 W (Lg)
Convection Power	2,750 W (Lg)

BURNER PERFORMANCE

Total Number of Cooktop Burners	6 + Griddle
Power of Front Left Burner BTU	18,000 and XLO (NG)
Power of Back Left Burner BTU	18,000 and XLO (NG)
Power of Back Center Burner BTU	18,000 (NG)
Power of Front Center Burner BTU	18,000 (NG)
Power of Center 12" Electric Griddle (W)	1,630 W
Power of Center 12" Electric Grill (W)	N/A
Power of Far Right 12" Electric Griddle (W)	N/A
Power of Back Right Burner BTU	18,000 and XLO (NG)
Power of Front Right Burner BTU	22,000 and XLO (NG)

DIMENSIONS & WEIGHT

Overall Appliance Dimensions (HxWxD) (in)	35 7/8" - 36 3/4" x 47 15/16" x 28 3/4"
Required Cutout Size (HxWxD) (in)	35 7/8" - 36 3/4" x 48" x 24" - 25 1/8"
Adjustable Range Height (in.)	7/8"
Net Weight (lbs)	530 lbs

WARRANTY

Limited Warranty, Entire Appliance, Parts and Labor	2 Year
---	--------

SEE PAGE 2 FOR INCLUDED ACCESSORIES

★ THERMADOR EXCLUSIVE

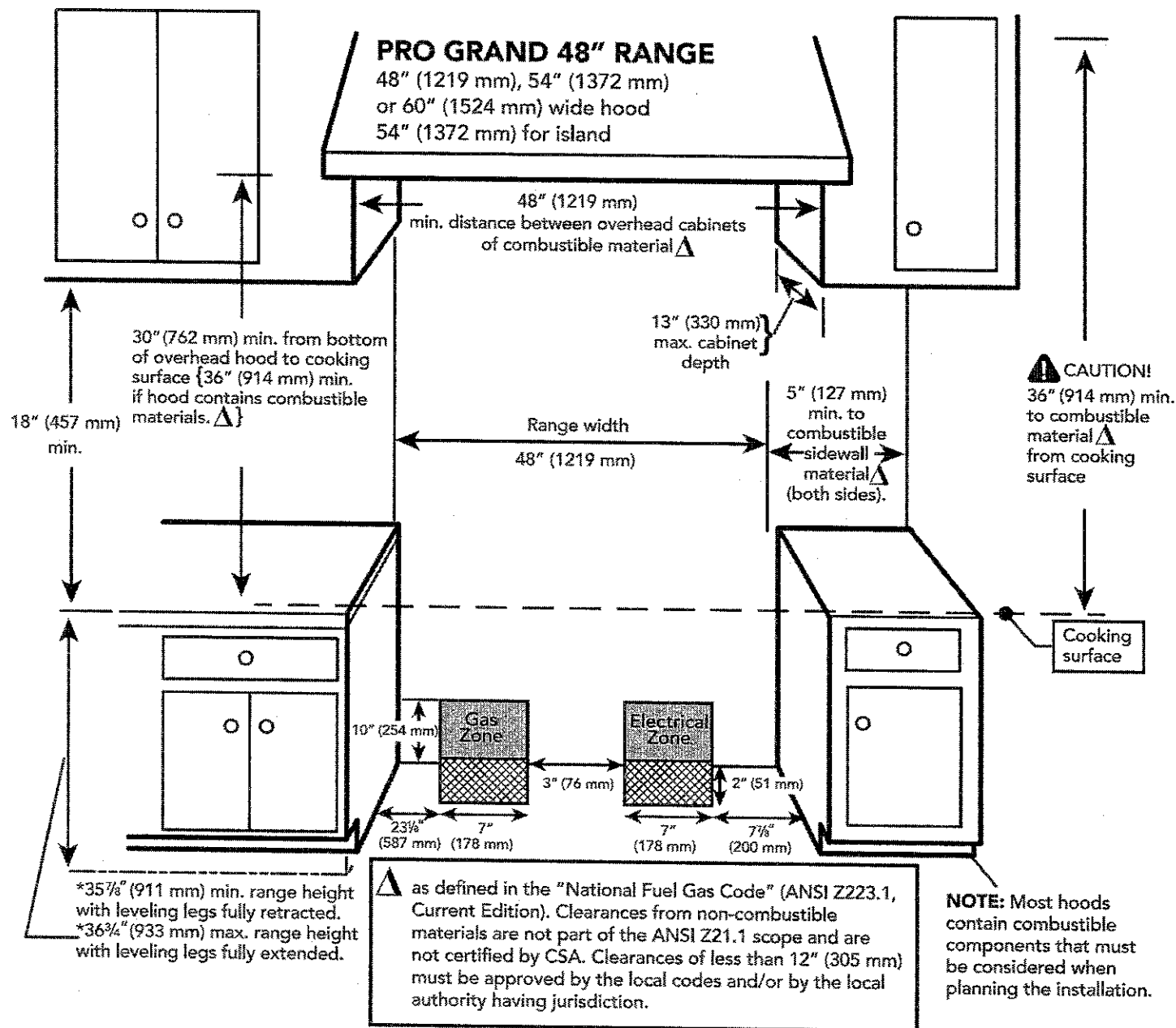
PRD48JDSGU

48-INCH DUAL-FUEL PRO GRAND® RANGE WITH STEAM AND GRIDDLE

PROFESSIONAL SERIES, COMMERCIAL-DEPTH, PORCELAIN COOKTOP SURFACE



48-INCH RANGE CUTOUT DIMENSIONS

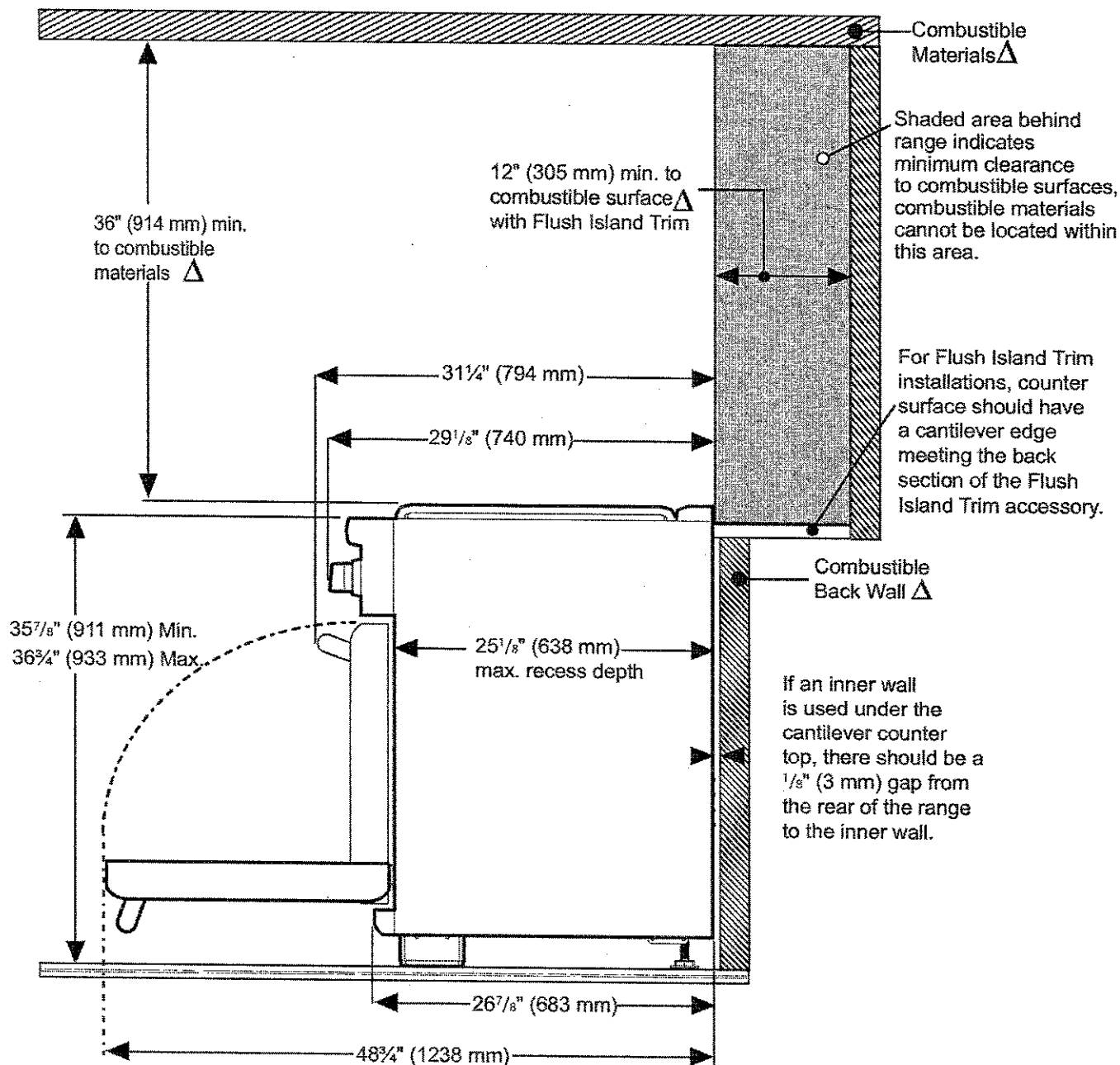


PRD48JDSGU 48-INCH DUAL-FUEL PRO GRAND® RANGE WITH STEAM AND GRIDDLE

PROFESSIONAL SERIES, COMMERCIAL-DEPTH, PORCELAIN COOKTOP SURFACE



48-INCH RANGE DIMENSIONS AND CLEARANCE REQUIREMENTS WITH "FLUSH ISLAND TRIM"



Δ As defined in the "National Fuel Gas Code" (ANSI Z223.1, Current Edition). Clearances from non-combustible materials are not part of the ANSI Z21.1 scope and are not certified by CSA. Clearances of less than 12" (305 mm) must be approved by the local codes and/or by the local authority having jurisdiction.

These warranties give you specific legal rights and you may have other rights that vary from state to state. Full warranty and limited warranty from date of installation. For complete warranty details, refer to your Use & Care manual, or ask your dealer.

Specifications are for planning purposes only. Refer to installation instructions and consult your countertop supplier prior to making counter opening. Consult with a heating and ventilation engineer for your specific ventilation requirements. For the most detailed information, refer to installation instructions accompanying product or write to Thermador indicating the model number. Specifications are correct at time of printing. Thermador reserves the right to change product specifications or design without notice. Some models are certified for use in Canada. Thermador is not responsible for products that are transported from the U.S. for use in Canada.

