

Brampton Encore - 23 - 1 - 38-8 Elev.A CORELLI
CENTRAL VAC AND WIRING

Inv.577	1 - FAMILY ROOM: INSTALL CONDUIT PIPE- FOR TELEVISION- MUST SPECIFY LOCATION AND TERMINATION POINT, ABOVE FIREPLACE
Line7020	Note:
15Jun16 / 16Nov16	
Inv.577	1 - TELEPHONE AND CABLE ROUGH-IN LOCATIONS
Line7019	Note:
15Jun16 / 16Nov16	

ELECTRICAL

Inv.577	1 - FAMILY ROOM: INSTALL 110V WALL RECEPTACLE ON DEDICATED CIRCUIT - ABOVE FIREPLACE . SEE SKETCH
Line7021	Note:
15Jun16 / 16Nov16	
Inv.577	1 - KITCHEN: INSTALL 220V WALL RECEPTICAL ON DEDICATED CIRCUIT- FOR 4 WIRE BUILT-IN WALL OVEN - FOR A MICROWAVE/WALL OVEN UNIT. PURCHASER IS AWARE THAT THEY NEED TO BUY THE APPROPRIATE CABINETRY AT THE TIME OF COLOURS
Line7022	Note:
15Jun16 / 16Nov16	
Inv.577	1 - KITCHEN: INSTALL A 110V WALL RECEPTACLE ON DEDICATED CIRCUIT-WHERE DISHWASHER IS NOW LOCATED
	PURCHASER WILL NOT BE INSTALLING A DISHWASHER BUT A WINE FRIDGE INSTEAD
Line7268	Note:
15Jun16 / 16Nov16	

EXTERIOR COLOURS

Inv.988	1 - EXTERIOR COLOUR PACKAGE 2
Line14119	Note:
16Nov16 / 16Nov16	

MISC.

Inv.577	1 - ELECTRICAL FOR APPLIANCES: *PLEASE NOTE: PRICE ABOVE MAY CHANGE. PURCHASER(S) TO PROVIDE PROPER APPLIANCE SPECIFICATIONS TO PRICE APPLICABLE ELECTRICAL ACCORDINGLY
Line7023	Note:
15Jun16 / 16Nov16	
Inv.577	1 - BONUS PACKAGE: \$1627.20 (INCLUDING TAXES) WORTH OF UPGRADES FROM GOLD PARK HOMES DÉCOR CENTRE IS BEING APPLIED TOWARD THE STRUCTURAL APPOINTMENT. PURCHASER HAS A REMAINING AMOUNT OF \$8372.80 (INCLUDING TAXES) TO BE USED TOWARD THE COLOUR APPOINTMENT.
Line7038	Note:
15Jun16 / 16Nov16	
Inv.577	1 - Purchaser has attended a Structural appointment at the Decor Centre & has DECLINED any additional upgrades and accepts and acknowledges that there will be no further structural changes/additions/deletions to be made upon signing on June 15, 2016
Line7039	Note:
15Jun16 / 16Nov16	
Inv.577	1 - Purchasers are aware & accepts that ANY changes made to upgrades after signing this Purchasers Extra Form are subject to a minimum administration fee of \$500. PLUS a 10% holdback fee
Line7040	Note:
15Jun16 / 16Nov16	

PLUMBING

Brampton Encore - 23 - 1 - 38-8 Elev.A CORELLI

Inv.577	1 - KITCHEN: INSTALL ROUGH-IN - WATERLINE FOR FRIDGE
Line7241	Note:
15Jun16 / 16Nov16	

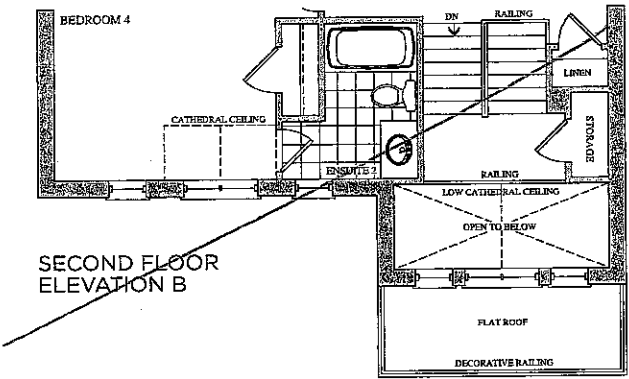
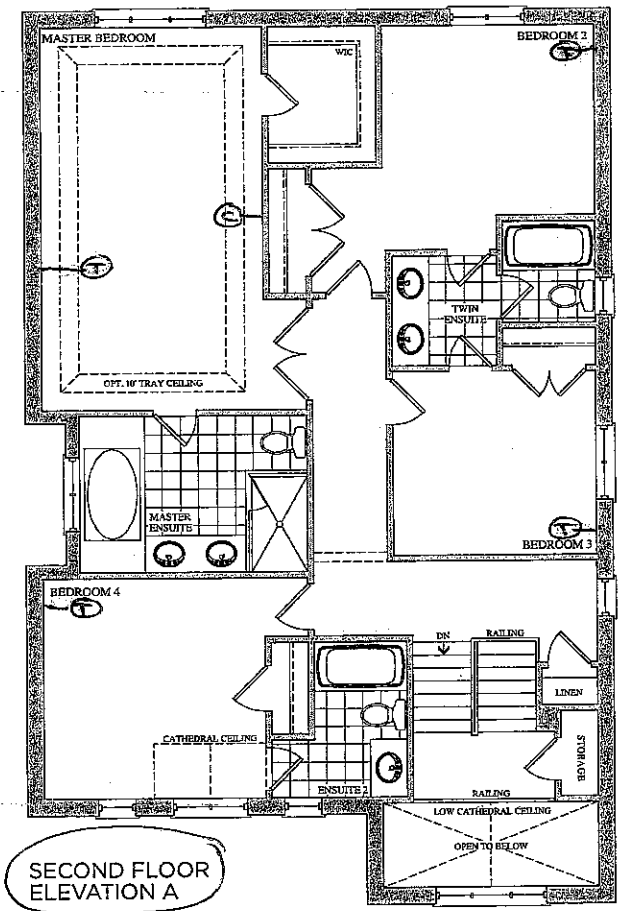
GOLD PARK HOMES



encore
BRAMPTON

Telephone — (T)
Cable — (C)

The
Corelli
38' SERIES

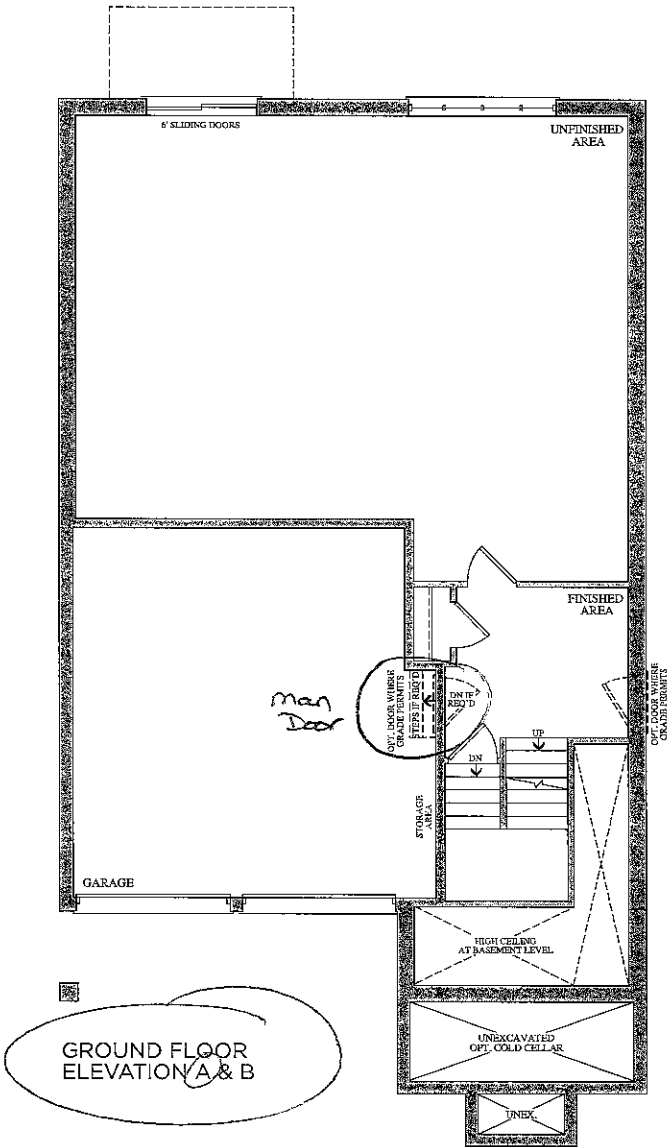
Elevation A • 3,878 sq.ft. | Elevation B • 3,878 sq.ft.





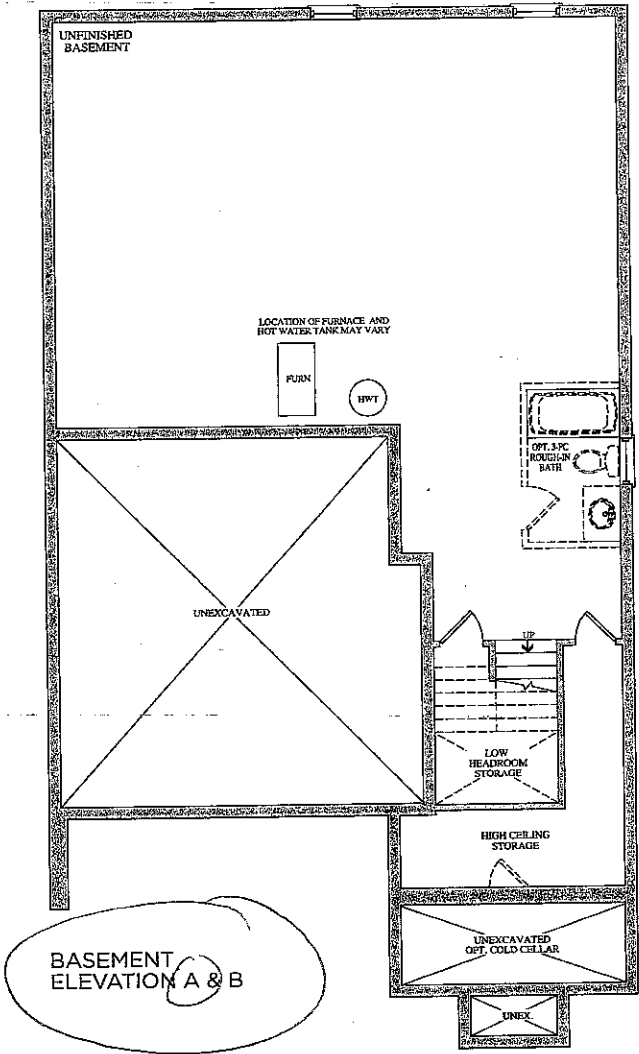
Lot 23
June 15, 16
 

Prices, figures, illustrations, sizes, features and finishes are subject to change without notice. E.&O.E. Areas and dimensions are approximate and actual usable floor space may vary from the stated area. Layout may be reverse of the unit purchased. E. & O.E.

GOLDPARK
HOMES



Lot 23
June 15, 16
 



Lot 23
June 15, 16
AD NW

Prices, figures, illustrations, sizes, features and finishes are subject to change without notice. E.&O.E. Areas and dimensions are approximate and actual usable floor space may vary from the stated area. Layout may be reverse of the unit purchased. E. & O.E.

KitchenAid® 27" (68.6 cm) and 30" (76.2 cm) Electric Built-In Microwave/Oven Combination

PRODUCT MODEL NUMBERS

KEMS309E

KOCE500E

KOCE507E

ELECTRICAL CONNECTION

If codes permit and a separate ground wire is used, it is recommended that a qualified electrical installer determine that the ground path and the wire gauge are in accordance with local codes.

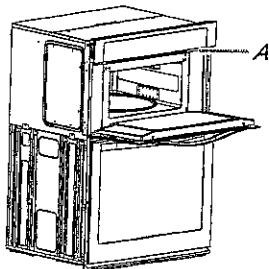
Check with a qualified electrical installer if you are not sure the oven is properly grounded.

This oven must be connected to a grounded metal, permanent wiring system.

Be sure that the electrical connection and wire size are adequate and in conformance with the National Electrical Code, ANSI/NFPA 70-latest edition or CSA Standards C22.1-94, Canadian Electrical Code, Part 1 and C22.2 No. O-M91-latest edition, and all local codes and ordinances.

To properly install your oven, you must determine the type of electrical connection you will be using and follow the instructions provided for it here.

- Oven must be connected to the proper electrical voltage and frequency as specified on the model/serial/rating plate. See the following illustration.



A. Model/serial/rating plate

- Models rated from 7.3 to 9.6 kW at 240 volts (5.4 to 7.4 kW at 208 volts) require a separate 40-amp circuit. Models rated at 4.8 kW and below at 240 volts (3.6 kW and below at 208 volts) require a separate 30-amp circuit.
- A circuit breaker is recommended.
- Connect directly to the fused disconnect (or circuit breaker box) through flexible, armored or nonmetallic sheathed, copper cable (with grounding wire). See "Make Electrical Connection" section.
- Flexible conduit from the oven should be connected directly to the junction box.
- Do not cut the conduit. The length of conduit provided is for serviceability of the oven.
- A UL listed or CSA approved conduit connector must be provided.
- If the house has aluminum wiring, follow the procedure below:
 - Connect a section of solid copper wire to the pigtail leads.
 - Connect the aluminum wiring to the added section of copper wire using special connectors and/or tools designed and UL listed for joining copper to aluminum.

Follow the electrical connector manufacturer's recommended procedure. Aluminum/copper connection must conform with local codes and industry accepted wiring practices.

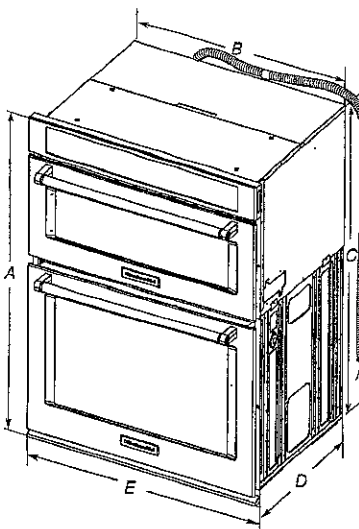
For power requirements, refer to the following table.

Model	Voltage	Amperage (L1)*	Amperage (L2)*	Rating (W)
KOCE507E/KOCE500E	120/240	32	30	8000
KOCE507E/KOCE500E	120/208	30	28	6600

*Amperage values noted above are for information purposes only: the units are rated in watts.

Because Whirlpool Corporation includes a continues commitment to improve our products, we reserve the right to change materials and specifications without notice.

PRODUCT DIMENSIONS



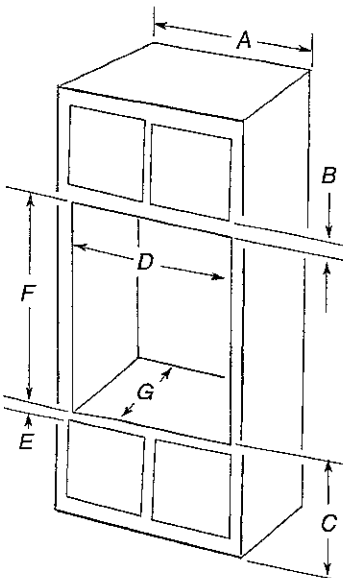
27" (68.6 cm) models

- A. 42⁹/₁₆" (108.0 cm) overall height
- B. 25⁷/₁₆" (64.6 cm) recessed width
- C. 41" (104.1 cm) recessed height
- D. 23¹/₄" (59.1 cm) max. recessed depth
- E. 27" (68.6 cm) overall width
- F. 48" (121.9 cm) flexible conduit length measured from the conduit clamp located at the rear of the oven. Do not remove the conduit clamp.

30" (76.2 cm) models

- A. 42⁹/₁₆" (108.0 cm) overall height
- B. 28⁷/₁₆" (72.3 cm) recessed width
- C. 41" (104.1 cm) recessed height
- D. 23¹/₄" (59.1 cm) max. recessed depth
- E. 30" (76.2 cm) overall width
- F. 48" (121.9 cm) flexible conduit length measured from the conduit clamp located at the rear of the oven. Do not remove the conduit clamp.

Cabinet Dimensions



27" (68.6 cm) models

- A. 27" (68.6 cm) min. cabinet width
- B. 1" (2.5 cm) top of cutout to bottom of upper cabinet door
- C. 19¹/₄" (48.9 cm) bottom of cutout to floor is recommended. 4"-19¹/₄" (10.2-48.9 cm) bottom of cutout to floor is acceptable.
- D. 25¹/₂" (64.8 cm) cutout width
- E. 1¹/₂" (3.8 cm) min. bottom of cutout to top of cabinet door
- F. 41⁵/₁₆" (105 cm)* recommended cutout height
- G. 24" (60.7 cm) cutout depth

30" (76.2 cm) models

- A. 30" (76.2 cm) min. cabinet width
- B. 1" (2.5 cm) top of cutout to bottom
- C. 19¹/₄" (48.9 cm) bottom of cutout to floor is recommended. 4"-19¹/₄" (10.2-48.9 cm) bottom of cutout to floor is acceptable.
- D. 28¹/₂" (72.4 cm) cutout width
- E. 1¹/₂" (3.8 cm) min. bottom of cutout
- F. 41⁵/₁₆" (105 cm)* recommended cutout
- G. 24" (60.7 cm) cutout depth

* NOTE: The cabinet height can be between 41" (104.1 cm) and 41¹/₂" (105.6 cm) for microwave/oven combination.

LCT 23

JUNE 15, 2016

JA MA

Dimensions are for planning purposes only. For complete details, see Installation Instructions packed with product. Specifications subject to change without notice.

Ref. W10725683B
2/10/15