



'THE DOGWOOD' - T04

SB-12 ENERGY EFFICIENCY DESIGN MATRIX

PRESCRIPTIVE COMPLIANCE	SB-12 (SECTION 2.1.1)	
PACKAGE D	SPACE HEATING FUEL	
	<input checked="" type="checkbox"/> GAS	<input type="checkbox"/> OIL
	<input type="checkbox"/> ELECTRIC	<input type="checkbox"/> PROPANE
	<input type="checkbox"/> EARTH	<input type="checkbox"/> SOLID FUEL

BUILDING COMPONENT	REQUIRED	PROPOSED
INSULATION RSI (R) VALUE		
CEILING W/ ATTIC SPACE	8.81 (R50)	8.81 (R50)
CEILING W/O ATTIC SPACE	5.46 (R31)	5.46 (R31)
EXPOSED FLOOR	5.46 (R31)	5.46 (R31)
WALLS ABOVE GRADE	4.23 (R24)	4.23 (R24)
BASEMENT WALLS	3.52 (R20)	3.52 (R20)
BELOW GRADE SLAB ENTIRE SURFACE > 600mm BELOW GRADE	-	-
EDGE OF BELOW GRADE SLAB ≤ 600mm BELOW GRADE	1.76 (R10)	1.76 (R10)
HEATED SLAB ≤ 600mm BELOW GRADE	1.76 (R10)	1.76 (R10)
CONC. SLAB ≤ 600mm BELOW GRADE	1.76 (R10)	1.76 (R10)
WINDOWS & DOORS		
WINDOWS/SLIDING GLASS DOORS (MAX U-VALUE or MIN. ER)	1.8	21
SKYLIGHTS (MAX. U-VALUE)	2.8	2.8
APPLIANCE EFFICIENCY		
SPACE HEATING EQUIP. (AFUE%)	94%	94%
HRV EFFICIENCY (%)	-	-
DHW HEATER (EF)	0.67	0.67

AREA CALCULATIONS	EL. 'A' & 'A1'	EL. 'A'	EL. 'B'	EL. 'B' - MOD		
	STD. & 4 BDRM PLAN	UPGRADE	STD. & 4 BDRM PLAN	STD. PLAN		
GROUND FLOOR AREA	725.37 sq. ft.	737.89 sq. ft.	725.37 sq. ft.	720.18 sq. ft.		
SECOND FLOOR AREA	952.78 sq. ft.	952.78 sq. ft.	952.78 sq. ft.	952.78 sq. ft.		
SUBTOTAL	1678 sq. ft.	1691 sq. ft.	1678 sq. ft.	1673 sq. ft.		
DEDUCT ALL OPEN AREAS	0 sq. ft.	0 sq. ft.	0 sq. ft.	0 sq. ft.		
TOTAL NET AREA	1678 sq. ft.	1691 sq. ft.	1678 sq. ft.	1673 sq. ft.		
	(155.91 sq. m.)	(157.07 sq. m.)	(155.91 sq. m.)	(155.42 sq. m.)		
FINISHED BASEMENT AREA	0 sq. ft.	0 sq. ft.	0 sq. ft.	0 sq. ft.		
COVERAGE	968.37 sq. ft.	980.88 sq. ft.	968.37 sq. ft.	963.17 sq. ft.		
W/OUT PORCH	(89.96 sq. m.)	(91.13 sq. m.)	(89.96 sq. m.)	(89.48 sq. m.)		
COVERAGE	1025.55 sq. ft.	1038.66 sq. ft.	1010.87 sq. ft.	991.5 sq. ft.		
W/ PORCH	(95.28 sq. m.)	(96.49 sq. m.)	(93.91 sq. m.)	(92.11 sq. m.)		
WINDOW / WALL AREA CALCULATIONS	EL. 'A'	EL. 'A'	EL. 'A1'	EL. 'A1'	EL. 'A'	EL. 'B'
	STD. PLAN	OPT. 4 BDRM PLAN	STD. PLAN	OPT 4 BDRM PLAN	UPGRADE	STD. PLAN
GROSS WALL AREA	2720.15 sq. ft.	2720.15 sq. ft.	2685.69 sq. ft.	2685.69 sq. ft.	2761.31 sq. ft.	2720.15 sq. ft.
	(252.71 sq. m.)	(252.71 sq. m.)	(249.51 sq. m.)	(249.51 sq. m.)	(256.53 sq. m.)	(252.71 sq. m.)
GROSS WINDOW AREA	243.74 sq. ft.	254.62 sq. ft.	235.73 sq. ft.	246.61 sq. ft.	316.63 sq. ft.	243.74 sq. ft.
(INCL. GLASS DOORS & SKYLIGHTS)	(22.64 sq. m.)	(23.65 sq. m.)	(21.90 sq. m.)	(22.91 sq. m.)	(29.42 sq. m.)	(22.64 sq. m.)
TOTAL WINDOW %	8.96 %	9.36 %	8.78 %	9.18 %	11.47 %	8.96 %

- 1 - TITLEPAGE
- 2 - BASEMENT PLAN ELEVATION 'A'
- 3 - GROUND FLOOR PLAN ELEVATION 'A'
- 4 - SECOND FLOOR PLAN ELEVATION 'A'
- 5 - SECOND FLOOR PLAN, OPT. 4 BEDROOM EL. 'A' (EL. 'B' & 'B-MOD SIMILAR)
- 6 - PARTIAL PLANS ELEVATION 'A' UPGRADE
- 7 - PARTIAL SECOND FLOOR PLAN ELEVATION 'A' UPGRADE
- 8 - PARTIAL PLANS ELEVATION 'B'
- 9 - PARTIAL SECOND FLOOR PLAN ELEVATION 'B'
- 10 - PARTIAL PLANS ELEVATION 'B-MOD'
- 11 - PARTIAL SECOND FLOOR PLAN ELEVATION 'B-MOD'
- 12 - FRONT ELEVATION 'A' & 'A-UPGRADE'
- 13 - LEFT SIDE ELEVATION 'A'
- 14 - LEFT SIDE ELEVATION 'A' UPGRADE
- 15 - REAR ELEVATION 'A', 'B' & 'B-MOD'
- 16 - FRONT ELEVATION 'B' & 'B-MOD'
- 17 - FRONT & REAR ELEVATION 'B-MOD' BLOCK 2
- 18 - LEFT SIDE ELEVATION 'B'
- 19 - LEFT SIDE ELEVATION 'B-MOD'
- 19A - LEFT SIDE ELEVATION 'B-MOD' BLOCK 2
- 20 - CROSS SECTION 'A-A'
- 21 - CONSTRUCTION NOTES
- W1 - PART. PLANS L.O.D. CONDITION
- W2 - PART. PLANS W.O.B. CONDITION

EL. 'B'	EL. 'B' - MOD		
OPT. 4 BDORM PLAN	STD. PLAN		
2720.15 sq. ft.	2720.15 sq. ft.		
(252.71 sq. m.)	(252.71 sq. m.)		
254.62 sq. ft.	243.74 sq. ft.		
(23.65 sq. m.)	(22.64 sq. m.)		
9.36 %	8.96 %		
7. FINAL ENG. COMMENTS AND ISSUED FINAL		REV.2051.06.22	RC
6. REVISED AS PER ENG. COMMENTS		REV.2015.05.25	HG
5. REVISED AS PER FLOOR LAYOUTS BY ALPHA ROOF TRUSSES INC.		REV.2015.05.21	HG
4. REVISED AS PER FLOOR LAYOUTS BY ARGO LUMBER INC.		REV.2015.05.20	HG
3. REVISED AS PER 11 7/8" ENG. FLOOR JOISTS		REV.2015.03.31	RC
2. REVISED AS PER CLIENT COMMENTS		REV.2015.03.17	RC
1. ISSUED FOR CLIENT REVIEW & PRICING		REV.2015.02.19	MN
REVISIONS		DATE (YYYY/MM/DD)	BY

THE UNDERSIGNED HAS REVIEWED AND TAKES RESPONSIBILITY FOR THIS DESIGN AND HAS THE QUALIFICATIONS AND MEETS THE REQUIREMENTS SET OUT IN THE ONTARIO BUILDING CODE TO BE A DESIGNER.

QUALIFICATION INFORMATION

HUNT DESIGN ASSOCIATES INC.

HUNT DESIGN ASSOCIATES INC.

ESQUIRE HOMES - 212043

RIVER RUN, AJAX, ONTARIO

8966 Woodbine Avenue // Suite 200 // Markham, ON // L3R 0J7

'THE DOGWOOD' - UNIT T04

REV.2015.06.22

212043WT04

42. 4-20M REBARS IN TOP OF FDN.
WALL FOR LATERAL SUPPORT @
STAIR OPENING, EXTEND BARS 24"
BEYOND STAIR OPENING EACHWAY.



BASEMENT PLAN ELEVATION 'A'

'THE DOGWOOD' - UNIT T04
REV.2015.06.22

Page Number
2 of 21

All drawings specifications related documents and design are the copyright property of Hunt Design Associates (H.D.A). Reproduction of this property in whole or in part is strictly prohibited without H.D.A.'s written permission (H.D.A. assumes no responsibility or liability for this property unless it bears the appropriate BCIN number and original signature).

ROADDERON | TUE MAY 31/16 11:57 AM | K:\PROJECTS\2012\212043\ESQ\WORKING\TOWNS\212043WTD4.DWG

THE UNDERSIGNED HAS REVIEWED AND TAKES RESPONSIBILITY FOR THIS DESIGN AND HAS THE QUALIFICATIONS AND MEETS THE REQUIREMENTS SET OUT IN THE ONTARIO BUILDING CODE TO BE A DESIGNER.

QUALIFICATION INFORMATION

Vijay Shivapaul

29444

NAME
REGISTRATION INFORMATION

SIGNATURE

BCIN

HUNT DESIGN ASSOCIATES INC.

19695

HUNT
DESIGN ASSOCIATES INC.

www.huntdesign.ca

ESQUIRE HOMES - 212043
RIVER RUN, AJAX, ONTARIO

Drawn By
HG

Checked By
MN

Scale
3/16"=1'-0"

8966 Woodbine Avenue // Suite 200 // Markham, ON // L3R 0J7

T 905.737.5133

File Number
212043WT04

Page Number
3 of 21

'THE DOGWOOD' - UNIT T04
REV.2015.06.22

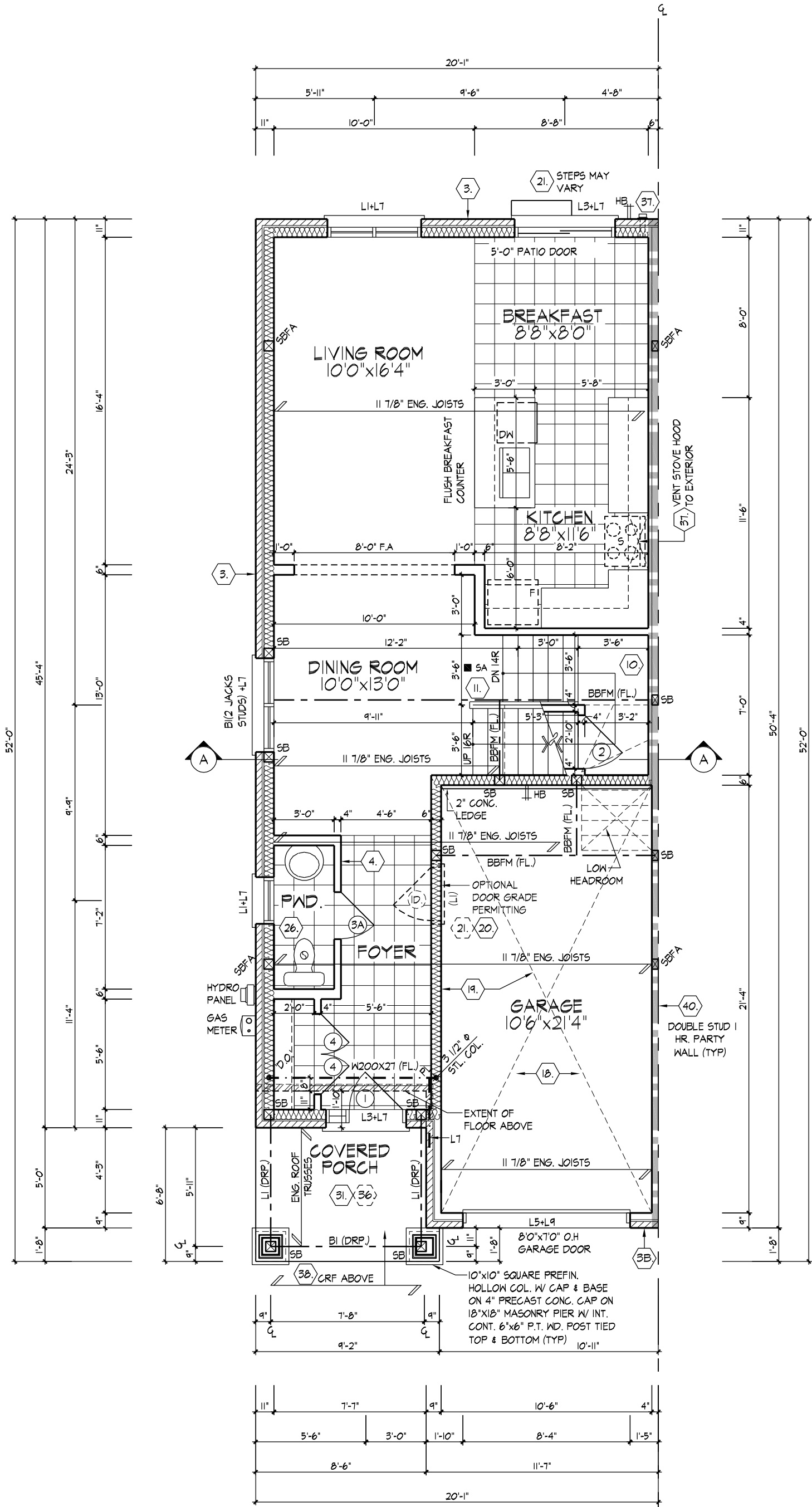
GROUND FLOOR PLAN ELEVATION 'A'

GROUND FLOOR PLAN ELEVATION 'A'

REFER TO ROOF TRUSS
MANUFACTURER'S DRAWINGS
FOR LAYOUT, SPACING,
INSTALLATION DETAILS AND
HANGER SIZES.

PROVIDE SOLID WOOD
BLOCKING @ 24" O.C. FOR
FIRST JOIST SPAN WHEN
PARALLEL W/ EXTERIOR WALL

REFER TO FLOOR JOIST
MANUFACTURER'S DRAWINGS FOR
LAYOUT, SPACING, BLOCKING &
STRAPPING REQUIREMENTS,
INSTALLATION DETAILS AND HANGER
SIZES, & SUBFLOOR THICKNESS



ROADDERON | TUE MAY 31/16 11:57 AM | K:\PROJECTS\2012\212043\ESQ\WORKING\TOWNS\212043WT04.DWG

THE UNDERSIGNED HAS REVIEWED AND TAKES RESPONSIBILITY FOR THIS DESIGN AND HAS THE QUALIFICATIONS AND MEETS THE REQUIREMENTS SET OUT IN THE ONTARIO BUILDING CODE TO BE A DESIGNER.

QUALIFICATION INFORMATION

Vijay Shivpaul

29444

NAME
REGISTRATION INFORMATION

SIGNATURE

BCIN

HUNT DESIGN ASSOCIATES INC.

19695

HUNT
DESIGN ASSOCIATES INC.

www.huntdesign.ca

ESQUIRE HOMES - 212043
RIVER RUN, AJAX, ONTARIO

Drawn By
HG

Checked By
MN

Scale
3/16"=1'-0"

8966 Woodbine Avenue // Suite 200 // Markham, ON // L3R 0J7

T 905.737.5133

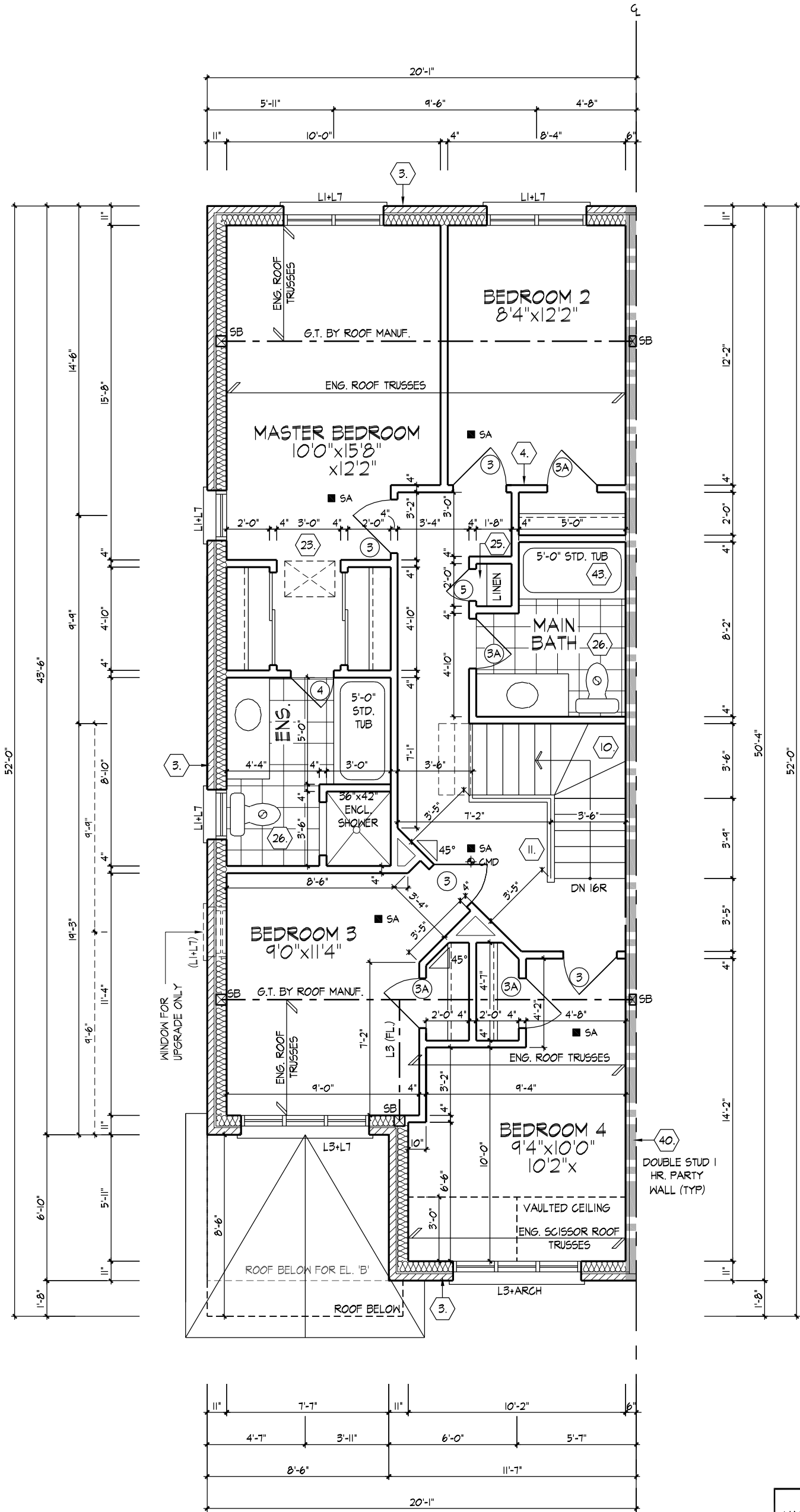
F 905.737.7326

'THE DOGWOOD' - UNIT T04
REV.2015.06.22

File Number
212043WT04

Page Number
5 of 21

All drawings specifications related documents and design are the copyright property of Hunt Design Associates (H.D.A). Reproduction of this property in whole or in part is strictly prohibited without H.D.A.'s written permission (H.D.A. assumes no responsibility or liability for this property unless it bears the appropriate BCIN number and original signature.)



SECOND FLOOR PLAN,
OPT. 4 BEDROOM EL 'A'
(EL. 'B' & 'B'-MOD SIMILAR)

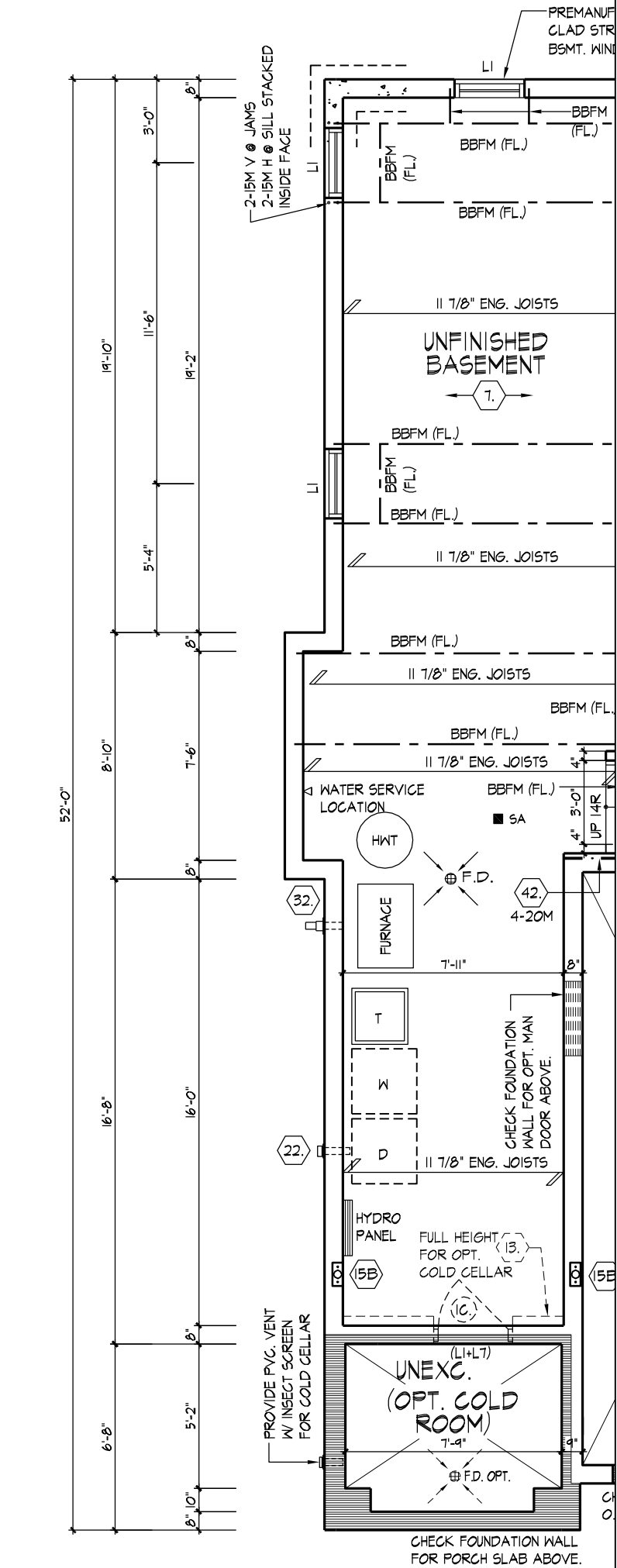
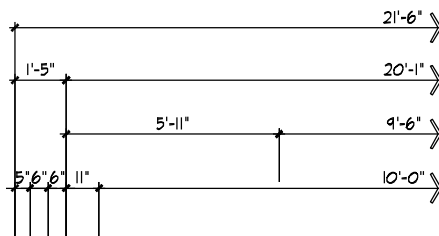
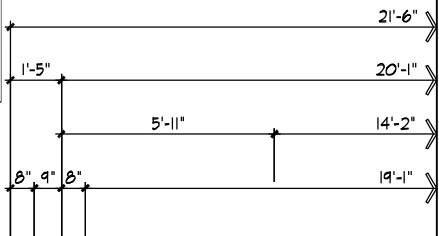
SECOND FLOOR PLAN, OPT. 4 BEDROOM EL. 'A' (EL. 'B' & 'B'-MOD SIMILAR)

REFER TO ROOF TRUSS
MANUFACTURER'S DRAWINGS
FOR LAYOUT, SPACING,
INSTALLATION DETAILS AND
HANGER SIZES.

NOTE:
MAXIMUM SUPPORTED TRUSS LENGTH
FOR LINTELS SHALL BE 9.8m (32'-2").
SEE OBC PART 9 TABLE A-15
FOOTNOTE 6. WHERE DESIGNED
TRUSS LENGTH EXCEEDS 32'-2"
LINTELS SHALL BE SIZED BY A
PROFESSIONAL ENGINEER

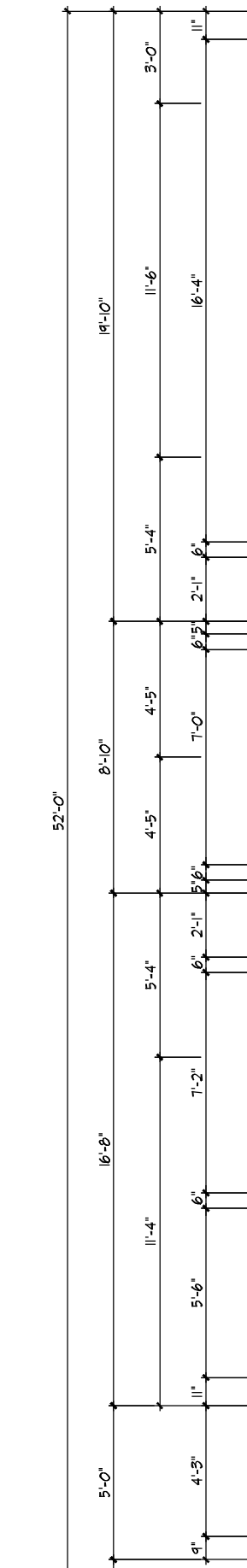
42.
2-20M
2-20M REBARS IN TOP OF FDN.
WALL FOR LATERAL SUPPORT @
STAIR OPENING, EXTEND BARS 24"
BEYOND STAIR OPENING EACHWAY.

42.
4-20M
4-20M REBARS IN TOP OF FDN.
WALL FOR LATERAL SUPPORT @
STAIR OPENING, EXTEND BARS 24"
BEYOND STAIR OPENING EACHWAY.



PROVIDE SOLID WOOD BLOCKING @ 24" O.C. FOR FIRST JOIST SPAN WHEN PARALLEL W/ EXTERIOR WALL
REFER TO STANDARD PLAN FOR COMPLETE CONSTRUCTION NOTES & DIMENSIONS
REFER TO FLOOR JOIST MANUFACTURER'S DRAWINGS FOR LAYOUT, SPACING, BLOCKING & STRAPPING REQUIREMENTS, INSTALLATION DETAILS AND HANGER SIZES, & SUBFLOOR THICKNESS

PARTIAL BASEMENT PLAN ELEVATION 'A' UPGRADE

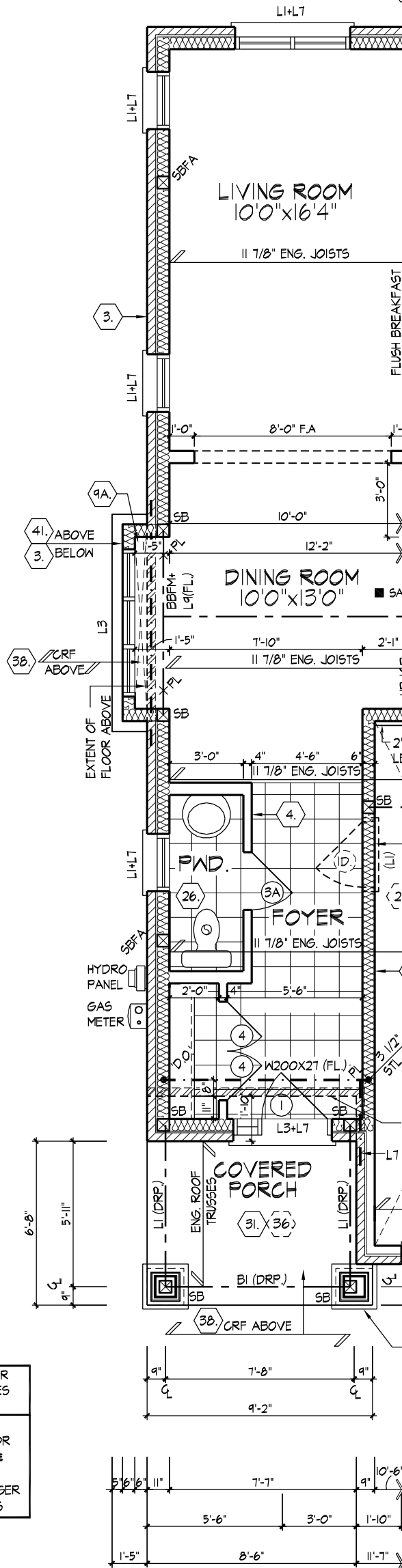


PROVIDE SOLID WOOD
BLOCKING @ 24" O.C. FOR
FIRST JOIST SPAN WHEN
PARALLEL W/ EXTERIOR WALL

REFER TO STANDARD PLAN FOR
COMPLETE CONSTRUCTION NOTES
& DIMENSIONS

REFER TO FLOOR JOIST
MANUFACTURER'S DRAWINGS FOR
LAYOUT, SPACING, BLOCKING &
STRAPPING REQUIREMENTS,
INSTALLATION DETAILS AND HANGER
SIZES, & SUBFLOOR THICKNESS

REFER TO ROOF TRUSS
MANUFACTURER'S DRAWINGS
FOR LAYOUT, SPACING,
INSTALLATION DETAILS AND
HANGER SIZES.



PARTIAL GROUND FLOOR
ELEVATION 'A' UPGRADE

ESQUIRE HOMES - 212043
RIVER RUN, AJAX, ONTARIO

'THE DOGWOOD' - UNIT T04
REV.2015.06.22

THE UNDERSIGNED HAS REVIEWED AND TAKES RESPONSIBILITY FOR THIS DESIGN AND HAS THE QUALIFICATIONS AND MEETS THE REQUIREMENTS SET OUT IN THE ONTARIO BUILDING CODE TO BE A DESIGNER.

QUALIFICATION INFORMATION

Vijay Shivpaul 2944

Vijay Shivpaul 2944

NAME	SIGNATURE	RC
------	-----------	----

NAME _____ SIGNATURE _____ DO _____
REGISTRATION INFORMATION _____

NAME REGION ACCOUNTS TO INC

HUNT DESIGN ASSOCIATES INC. 1969



HUNT
DESIGN ASSOCIATES INC.

Deposit Due	Checked Due	Seals	File Number	Page Number
-------------	-------------	-------	-------------	-------------

Drawn By: MM Checked By: MM Scale: 3/4" = 1'-0" File Number: 21-00-1247-1 Page Number: 3

HG MN 3/16"=1'-0" 212043WT04 6 of 21

0000	0001	0002	0003	0004	0005	0006	0007	0008	0009	0010	0011	0012	0013	0014	0015	0016	0017	0018	0019	0020	0021	0022	0023	0024	0025	0026	0027	0028	0029	0030	0031	0032	0033	0034	0035	0036	0037	0038	0039	0040	0041	0042	0043	0044	0045	0046	0047	0048	0049	0050	0051	0052	0053	0054	0055	0056	0057	0058	0059	0060	0061	0062	0063	0064	0065	0066	0067	0068	0069	0070	0071	0072	0073	0074	0075	0076	0077	0078	0079	0080	0081	0082	0083	0084	0085	0086	0087	0088	0089	0090	0091	0092	0093	0094	0095	0096	0097	0098	0099
0000	0001	0002	0003	0004	0005	0006	0007	0008	0009	0010	0011	0012	0013	0014	0015	0016	0017	0018	0019	0020	0021	0022	0023	0024	0025	0026	0027	0028	0029	0030	0031	0032	0033	0034	0035	0036	0037	0038	0039	0040	0041	0042	0043	0044	0045	0046	0047	0048	0049	0050	0051	0052	0053	0054	0055	0056	0057	0058	0059	0060	0061	0062	0063	0064	0065	0066	0067	0068	0069	0070	0071	0072	0073	0074	0075	0076	0077	0078	0079	0080	0081	0082	0083	0084	0085	0086	0087	0088	0089	0090	0091	0092	0093	0094	0095	0096	0097	0098	0099

All drawings specifications related documents and design are the copyright property of Hunt Design Associates (H.D.A.). Reproduction of this property in whole or in part is strictly prohibited without H.D.A.'s written permission. H.D.A. assumes no responsibility or liability for this property unless it bears the appropriate BCIN number and original signature.

ROADERON | TUE MAY 31/16 11:57 AM | K:\PROJECTS\2012\212043\ESQ\WORKING\TOWNS\212043WT04.DWG

THE UNDERSIGNED HAS REVIEWED AND TAKES RESPONSIBILITY FOR THIS DESIGN AND HAS THE QUALIFICATIONS AND MEETS THE REQUIREMENTS SET OUT IN THE ONTARIO BUILDING CODE TO BE A DESIGNER.

QUALIFICATION INFORMATION

Vijay Shivpaul 29444

NAME SIGNATURE BCIN

REGISTRATION INFORMATION

HUNT DESIGN ASSOCIATES INC. 19695



www.huntdesign.ca

ESQUIRE HOMES - 212043
RIVER RUN, AJAX, ONTARIO

Drawn By HG

Checked By MN

Scale 3/16"=1'-0"

8966 Woodbine Avenue // Suite 200 // Markham, ON // L3R 0J7

T 905.737.5133 F 905.737.7326

THE DOGWOOD' - UNIT T04
REV.2015.06.22

File Number 212043WT04

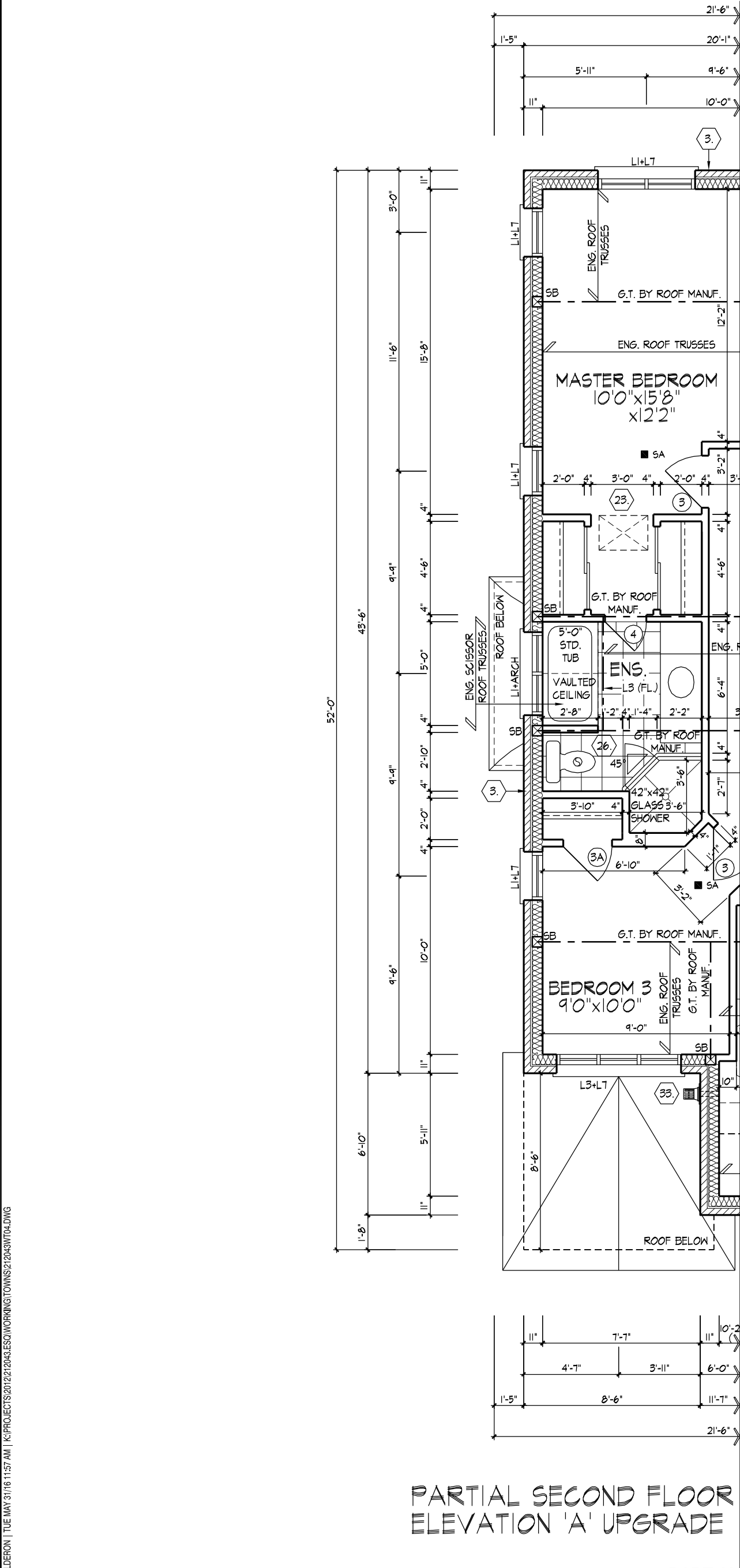
Page Number 7 of 21

212043WT04

212043WT04

212043WT04

All drawings specifications related documents and design are the copyright property of Hunt Design Associates (H.D.A). Reproduction of this property in whole or in part is strictly prohibited without H.D.A.'s written permission (H.D.A. assumes no responsibility or liability for this property unless it bears the appropriate BCIN number and original signature.)



PARTIAL SECOND FLOOR
ELEVATION 'A' UPGRADE

PARTIAL SECOND FLOOR PLAN ELEVATION 'A' UPGRADE

ROADDERON | TUE MAY 31/16 11:57 AM | K:\PROJECTS\2012\212043\ESQ\WORKING\TOWNS\212043WT04.DWG

THE UNDERSIGNED HAS REVIEWED AND TAKES RESPONSIBILITY FOR THIS DESIGN AND HAS THE QUALIFICATIONS AND MEETS THE REQUIREMENTS SET OUT IN THE ONTARIO BUILDING CODE TO BE A DESIGNER.

QUALIFICATION INFORMATION

Vijay Shivapaul

29444

NAME SIGNATURE BCIN

REGISTRATION INFORMATION

HUNT DESIGN ASSOCIATES INC.

19895

HUNT
DESIGN ASSOCIATES INC.
www.huntdesign.ca

ESQUIRE HOMES - 212043
RIVER RUN, AJAX, ONTARIO

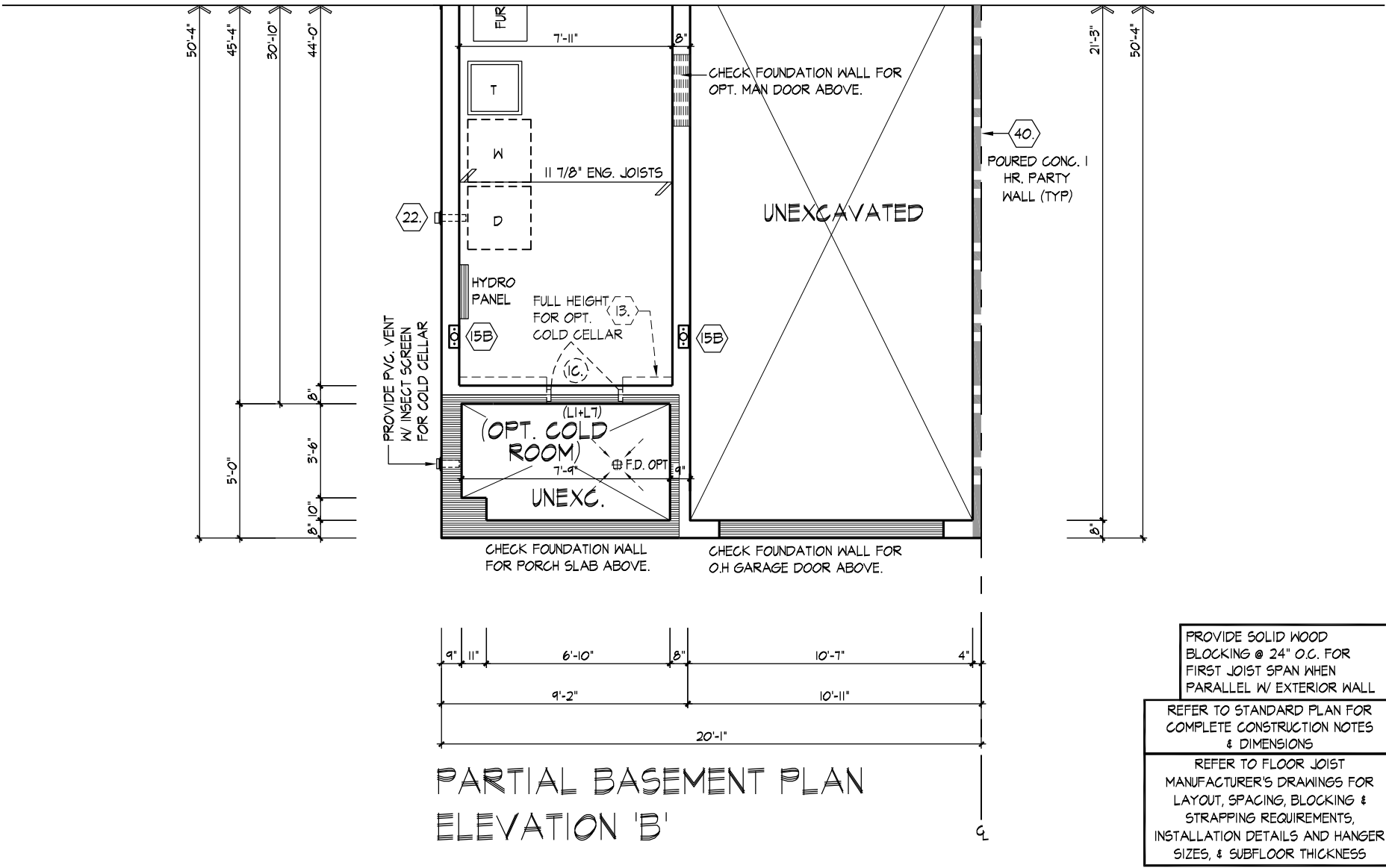
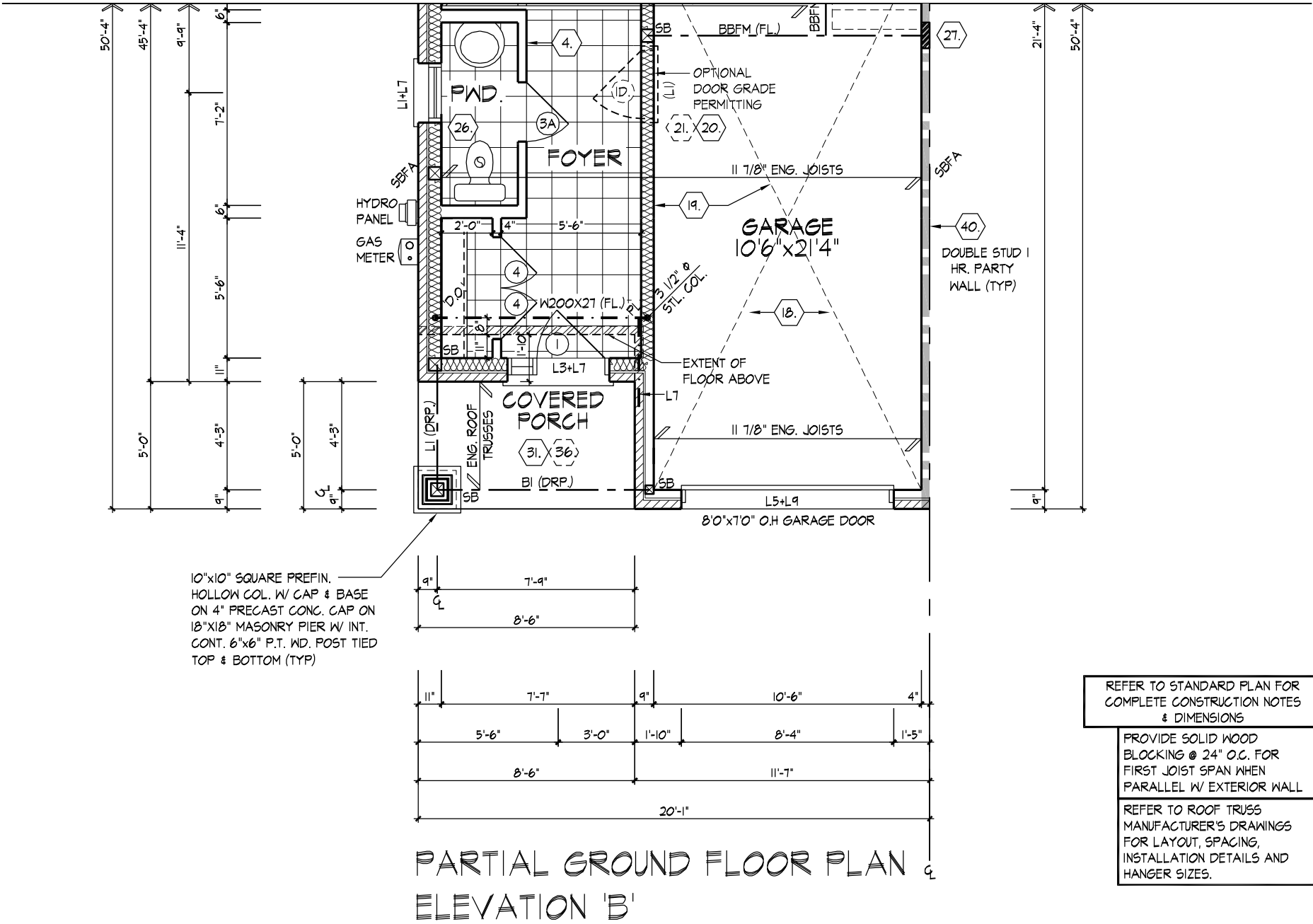
Drawn By HG Checked By MN Scale 3/16"=1'-0"

'THE DOGWOOD' - UNIT T04
REV.2015.06.22

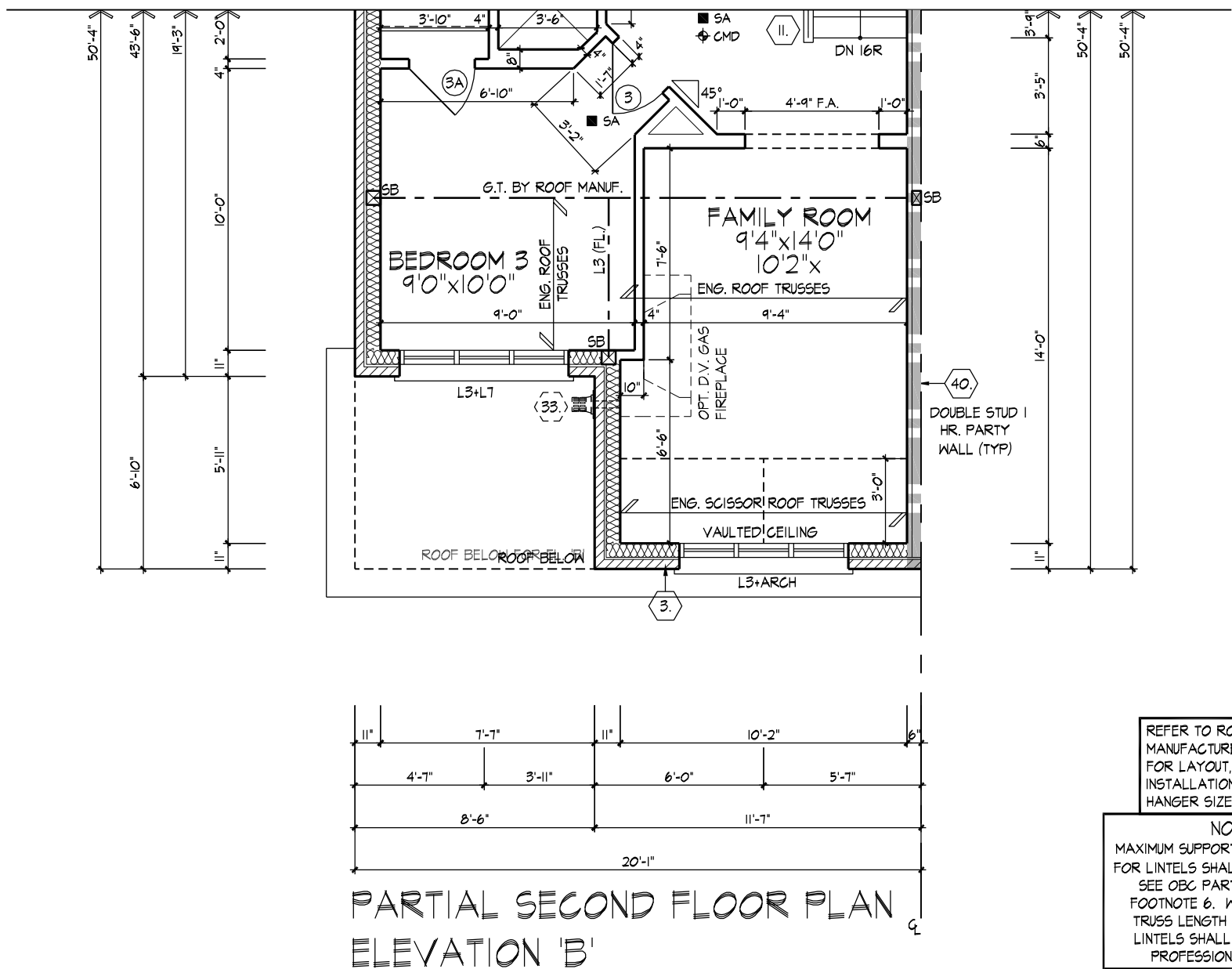
File Number 212043WT04 Page Number 8 of 21

8966 Woodbine Avenue // Suite 200 // Markham, ON // L3R 0J7 T 905.737.5133 F 905.737.7326

All drawings specifications related documents and design are the copyright property of Hunt Design Associates (H.D.A). Reproduction of this property in whole or in part is strictly prohibited without H.D.A.'s written permission (H.D.A. assumes no responsibility or liability for this property unless it bears the appropriate BCIN number and original signature.)



PARTIAL PLANS ELEVATION 'B'



ROADDERON | TUE MAY 31/16 11:57 AM | K:\PROJECTS\2012\212043.ESQ\WORKING\TOWNS\212043WT04.DWG

THE UNDERSIGNED HAS REVIEWED AND TAKES RESPONSIBILITY FOR THIS DESIGN AND HAS THE QUALIFICATIONS AND MEETS THE REQUIREMENTS SET OUT IN THE ONTARIO BUILDING CODE TO BE A DESIGNER.

QUALIFICATION INFORMATION

Vijay Shivapaul

29444

NAME SIGNATURE BCIN

REGISTRATION INFORMATION

HUNT DESIGN ASSOCIATES INC.

19695

HUNT
DESIGN ASSOCIATES INC.

www.huntdesign.ca

ESQUIRE HOMES - 212043
RIVER RUN, AJAX, ONTARIO

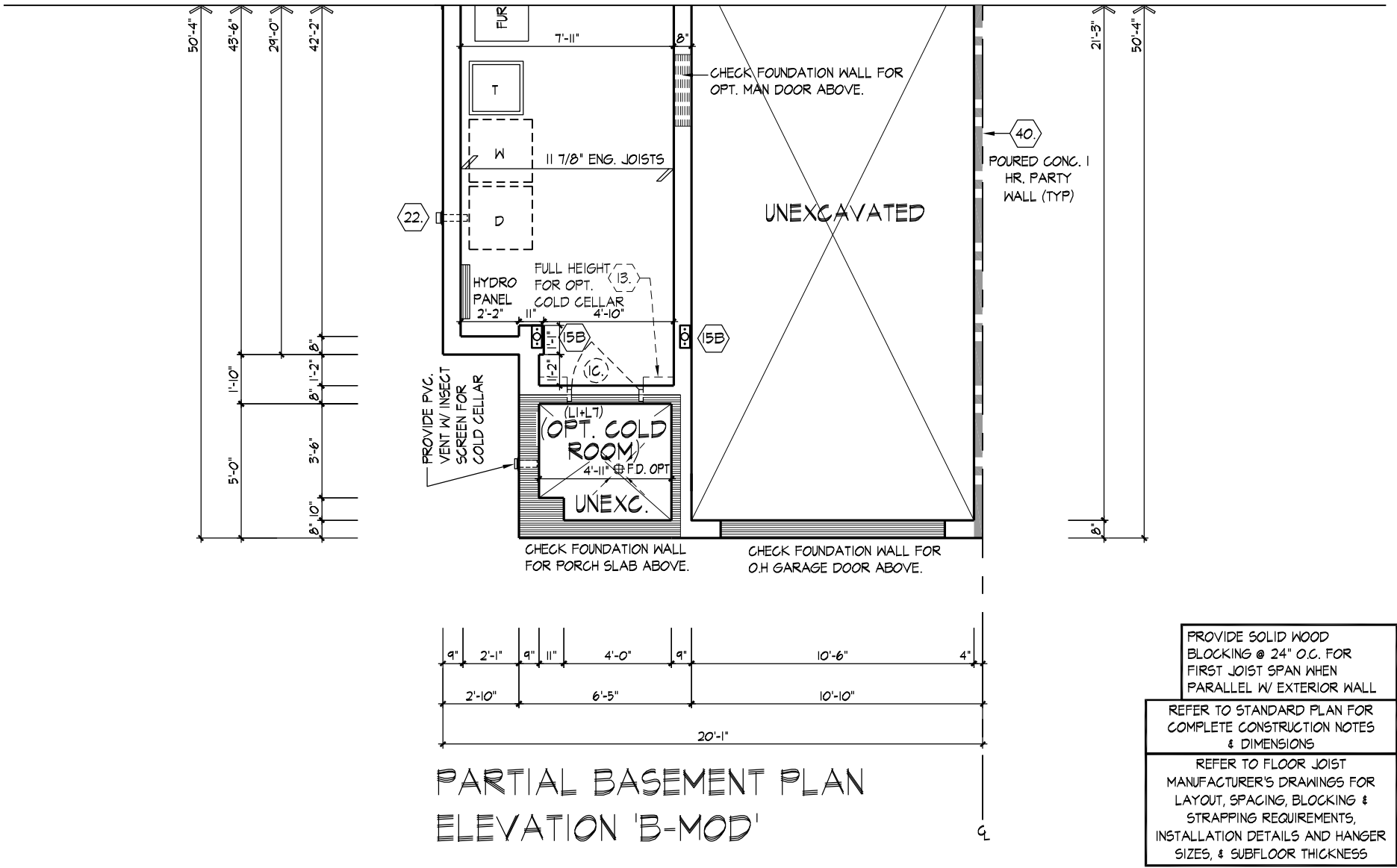
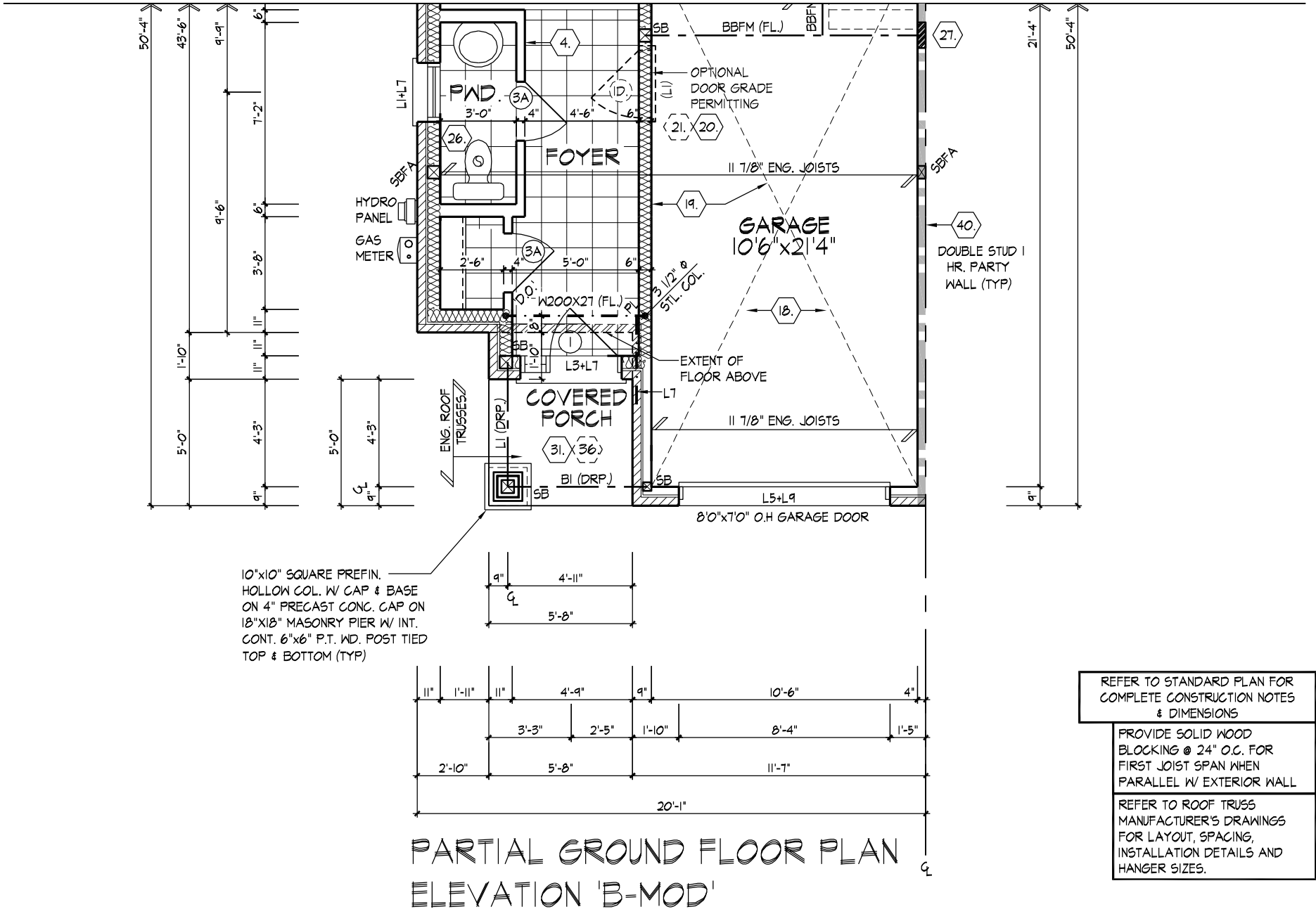
Drawn By HG
Checked By MN
Scale 3/16"=1'-0"

'THE DOGWOOD' - UNIT T04
REV.2015.06.22

File Number 212043WT04
Page Number 10 of 21

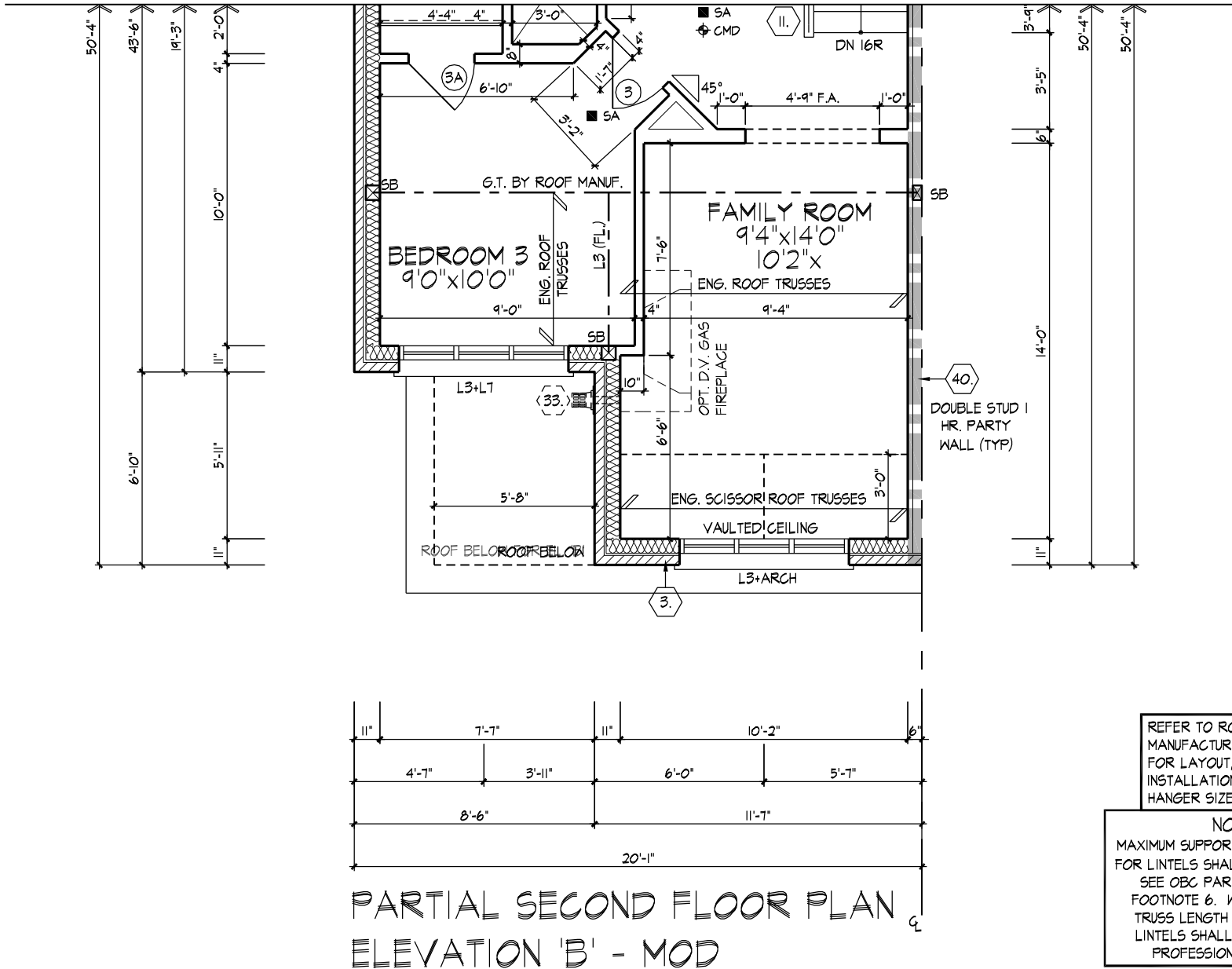
8966 Woodbine Avenue // Suite 200 // Markham, ON // L3R 0J7 T 905.737.5133 F 905.737.7326

All drawings specifications related documents and design are the copyright property of Hunt Design Associates (H.D.A). Reproduction of this property in whole or in part is strictly prohibited without H.D.A.'s written permission (H.D.A. assumes no responsibility or liability for this property unless it bears the appropriate BCIN number and original signature.)



PARTIAL PLANS ELEVATION 'B-MOD'

ROADDERON | TUE MAY 31/16 11:57 AM | K:\PROJECTS\2012\212043\ESQ\WORKING\TOWNS\212043WT04.DWG



PARTIAL SECOND FLOOR PLAN ELEVATION 'B-MOD'

THE UNDERSIGNED HAS REVIEWED AND TAKES RESPONSIBILITY FOR THIS DESIGN AND HAS THE QUALIFICATIONS AND MEETS THE REQUIREMENTS SET OUT IN THE ONTARIO BUILDING CODE TO BE A DESIGNER.
QUALIFICATION INFORMATION
NAME: Vijay Shivapaul
REGISTRATION INFORMATION: 29444
BCIN: 19695

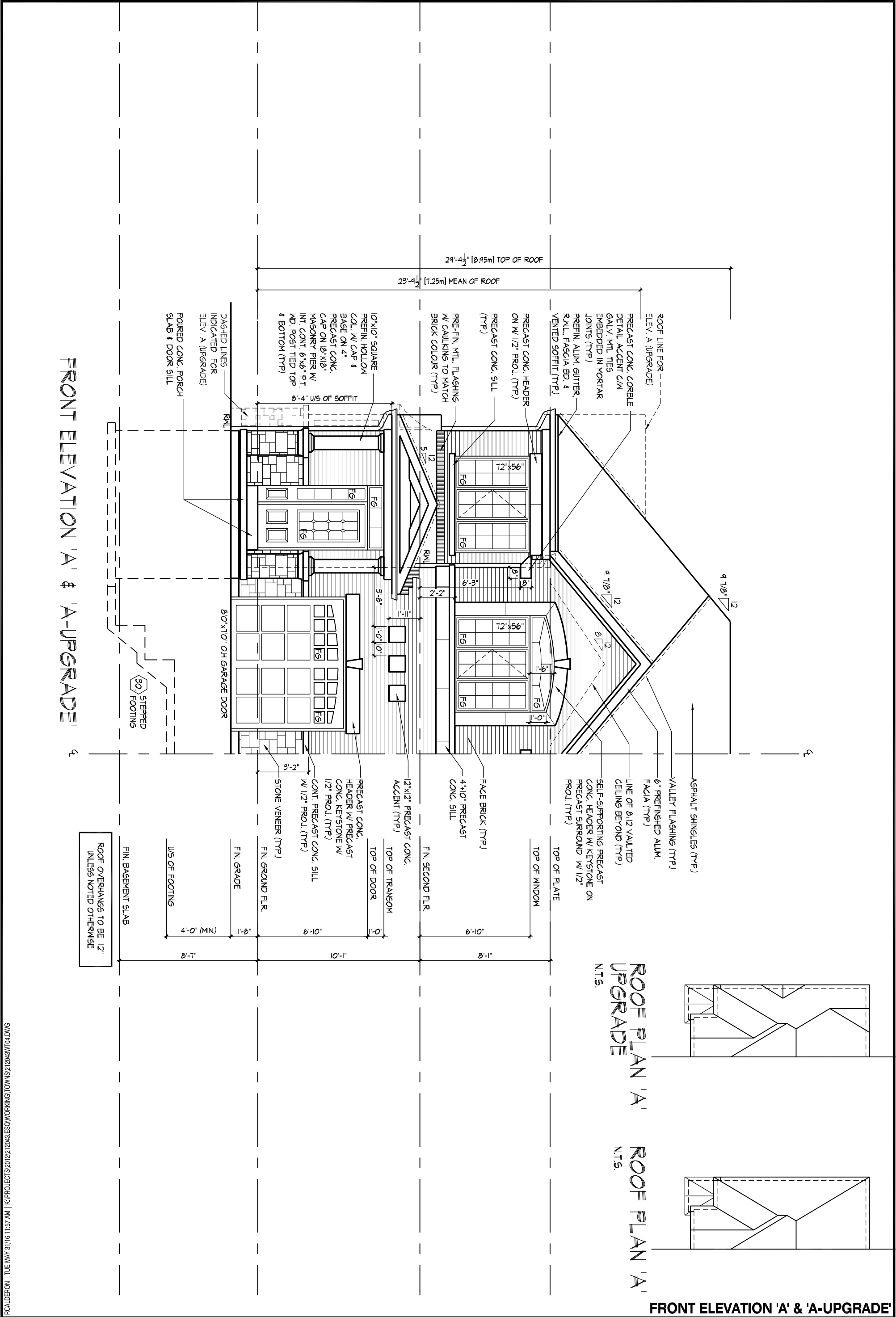
HUNT
DESIGN ASSOCIATES INC.
www.huntdesign.ca

ESQUIRE HOMES - 212043
RIVER RUN, AJAX, ONTARIO

THE DOGWOOD' - UNIT T04
REV.2015.06.22

Drawn By: HG
Checked By: MN
Scale: 3/16"=1'-0"
File Number: 212043WT04
Page Number: 11 of 21

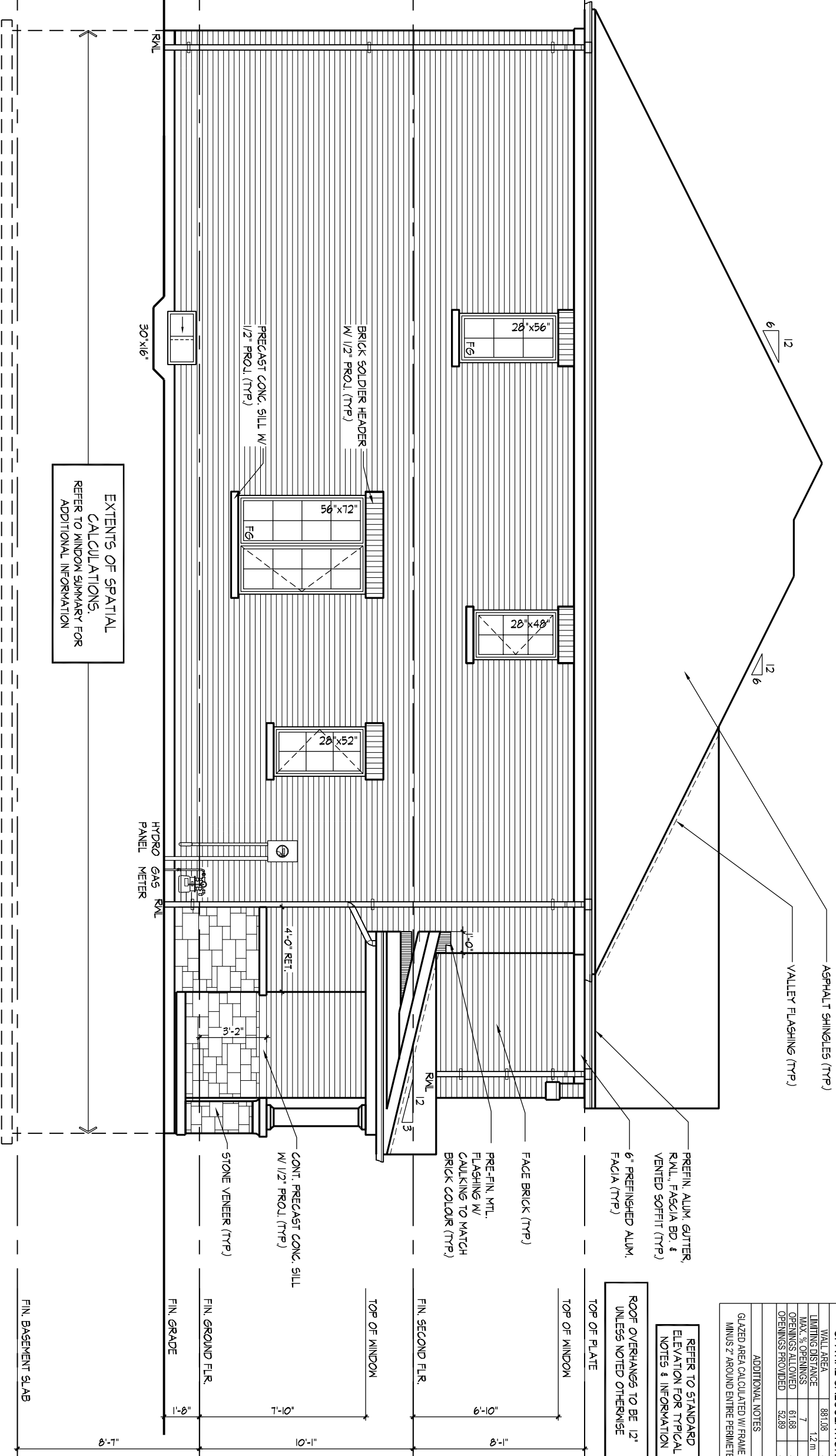
All drawings specifications related documents and design are the copyright property of Hunt Design Associates (H.D.A). Reproduction of this property in whole or in part is strictly prohibited without H.D.A.'s written permission (H.D.A. assumes no responsibility or liability for this property unless it bears the appropriate BCIN number and original signature.)



WINDOW SUMMARY			
PER O.B.C. TABLE 9.10.15.4			
LEFT SIDE ELEVATION A			
QUAN.	WIDTH	DEPTH	WINDOW / DOOR FRAME SIZE (S.F.)
1	28"	56"	7.33
1	28"	48"	7.33
1	56"	72"	24.56
1	28"	52"	8.00
2	30"	16"	4.33
0	0"	0"	0.00
0	0"	0"	0.00
0	0"	0"	0.00
0	0"	0"	0.00
0	0"	0"	0.00
0	0"	0"	0.00
0	0"	0"	0.00
0	0"	0"	0.00
0	0"	0"	0.00
0	0"	0"	0.00
0	0"	0"	0.00
SPATIAL CALCULATION			
WALL AREA	881.08	S.F.	
LIMITING DISTANCE	1.2 m		
MAX. % OPENINGS	7	%	
OPENINGS ALLOWED	61.68	S.F.	
OPENINGS PROVIDED	52.89	S.F.	
ADDITIONAL NOTES			
GLAZED AREA CALCULATED W/ FRAME SIZE MINUS 2" AROUND ENTIRE PERIMETER			

REFER TO STANDARD ELEVATION FOR TYPICAL NOTES & INFORMATION

ROOF OVERHANGS TO BE 12" UNLESS NOTED OTHERWISE



LEFT SIDE ELEVATION 'A'

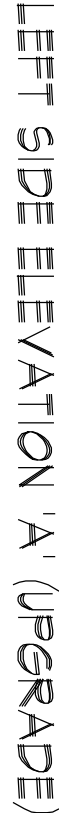
THE DOGWOOD' - UNIT T04
REV.2015.06.22

ESQUIRE HOMES - 212043
RIVER RUN, AJAX, ONTARIO

HUNT DESIGN ASSOCIATES INC.
www.huntdesign.ca

THE UNDERSIGNED HAS REVIEWED AND TAKES RESPONSIBILITY FOR THIS DESIGN AND HAS THE QUALIFICATIONS AND MEETS THE REQUIREMENTS SET OUT IN THE ONTARIO BUILDING CODE TO BE A DESIGNER.
QUALIFICATION INFORMATION
Vijay Shrivastava
NAME
REGISTRATION INFORMATION
HUNT DESIGN ASSOCIATES INC.
29444
BCIN
19695

Drawn By HG Checked By VS Scale 3/16"=1'-0" File Number 212043WT04 Page Number 13 of 21
8966 Woodbine Avenue // Suite 200 // Markham, ON // L3R 0J7 T 905.737.5133 F 905.737.7326



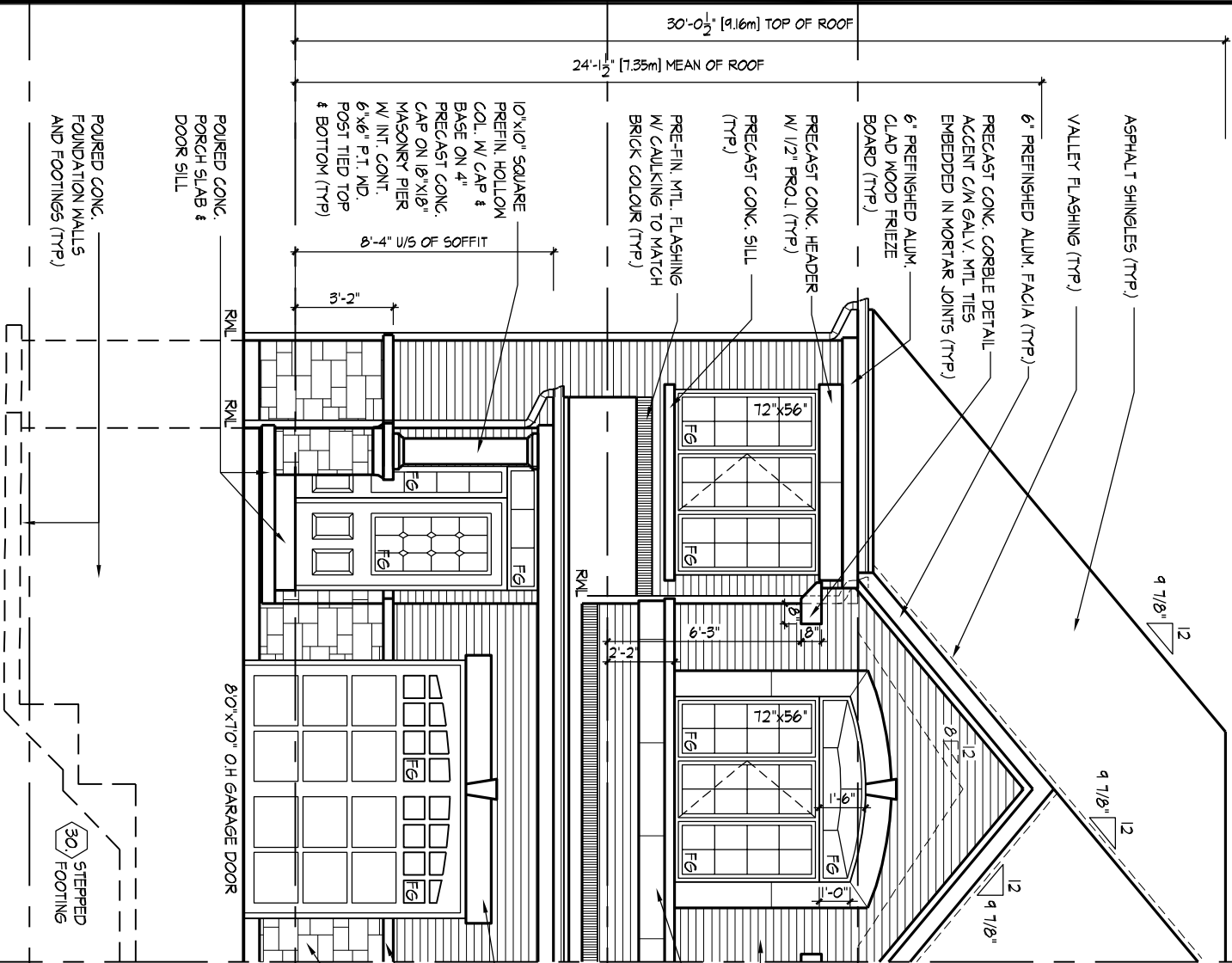
'THE DOGWOOD' - UNIT T04
REV.2015.06.22

Drawn By HG Checked By VS Scale 3/16"=1'-0"

8966 Woodbine Avenue // Suite 200 // Markham, ON // L3R 0J7

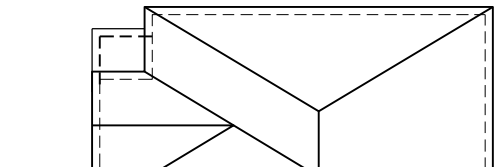
Page Number
14 of 25

FRONT ELEVATION 'B' - MOD

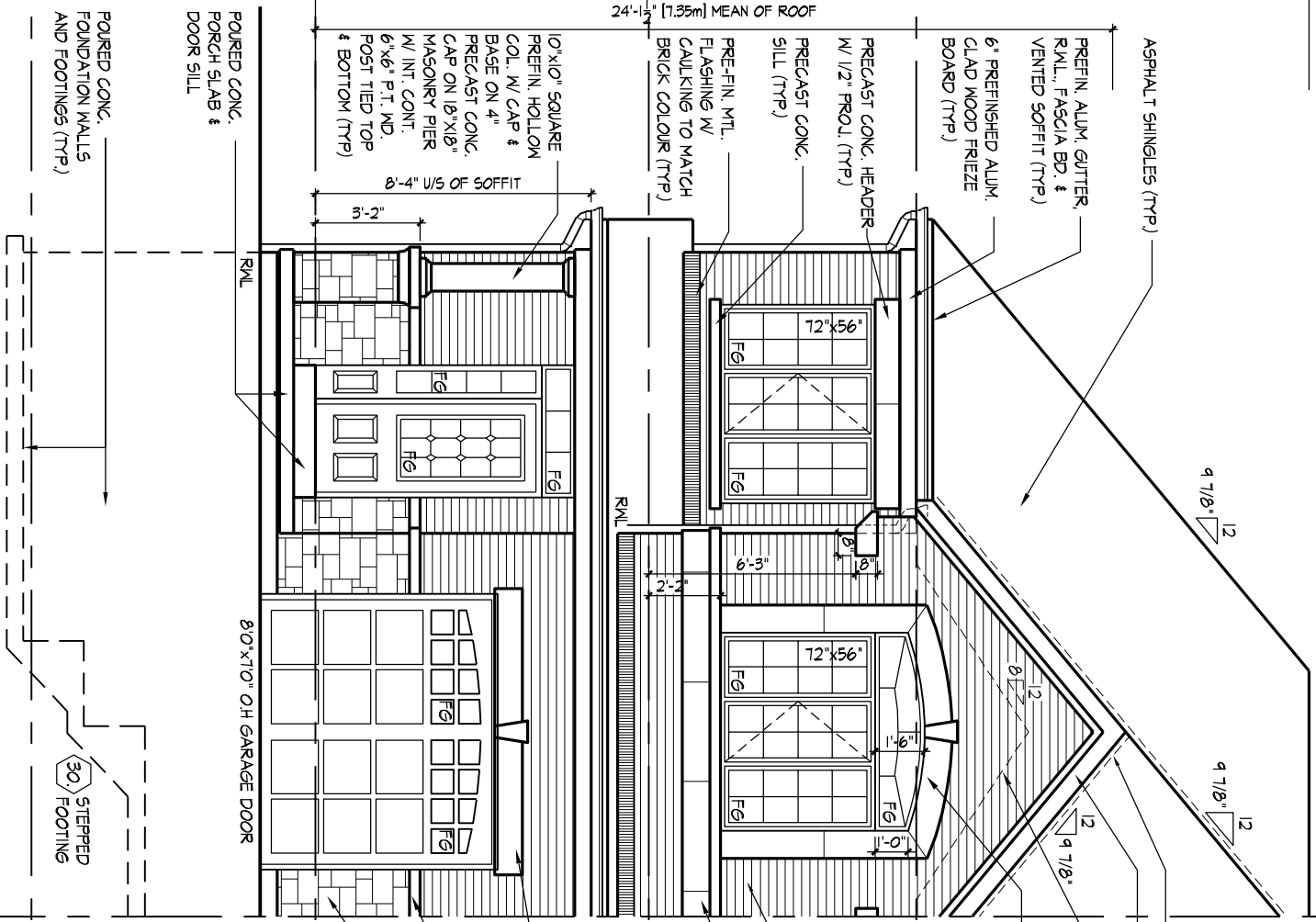


ROOF PLAN 'B-MOD'

N.T.S.

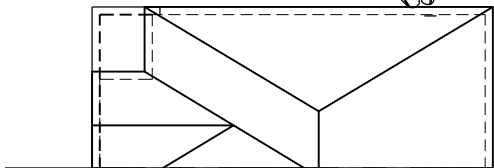


FRONT ELEVATION 'B'



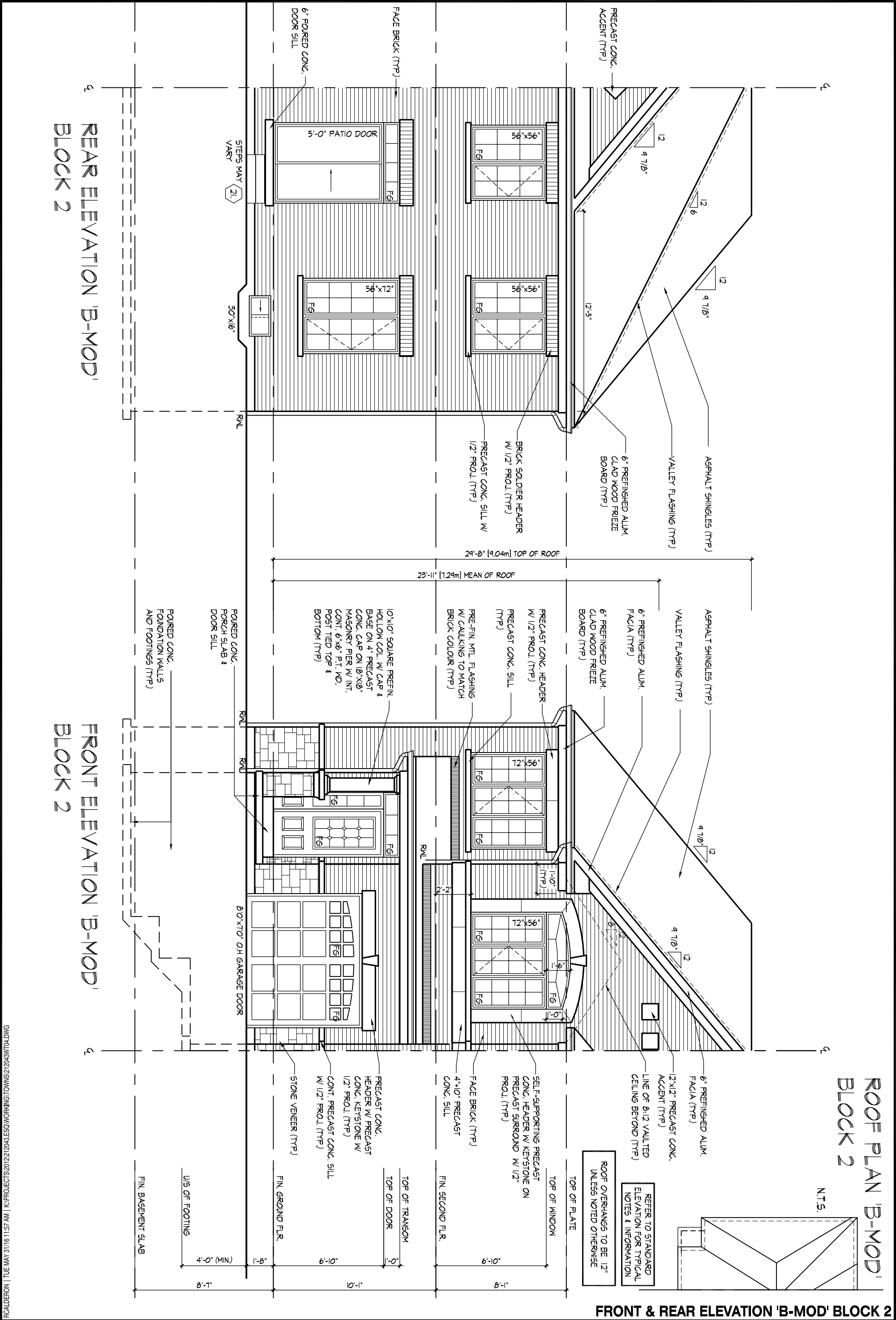
ROOF PLAN 'B'

N.T.S.



FRONT ELEVATION 'B' & 'B-MOD'

ROOF OVERHANGS TO BE 12" UNLESS NOTED OTHERWISE



THE UNDERSIGNED HAS REVIEWED AND TAKES RESPONSIBILITY FOR THIS DESIGN AND HAS THE QUALIFICATIONS AND MEETS THE REQUIREMENTS SET OUT IN THE ONTARIO BUILDING CODE TO BE A DESIGNER.

QUALIFICATION INFORMATION

Vijay Shrivastava

NAME

SIGNATURE

BCIN

29444

REGISTRATION INFORMATION

HUNT DESIGN ASSOCIATES INC.

19695

HUNT

DESIGN ASSOCIATES INC.

www.huntdesign.ca

ESQUIRE HOMES - 212043

RIVER RUN, AJAX, ONTARIO

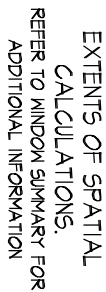
THE DOGWOOD' - UNIT T04

REV.2015.06.22

Drawn By: HG, Checked By: VS, Scale: 3/16"=1'-0", File Number: 212043WT04, Page Number: 17 of 21

8966 Woodbine Avenue // Suite 200 // Markham, ON // L3R 0J7 T 905.737.5133 F 905.737.7326

All drawings specifications related documents and design are the copyright property of Hunt Design Associates (H.D.A). Reproduction of this property in whole or in part is strictly prohibited without H.D.A.'s written permission (H.D.A. assumes no responsibility or liability for this property unless it bears the appropriate BCIN number and original signature).



WINDOW SUMMARY				
PER O.B.C. TABLE 9.10.15.4				
LEFT SIDE ELEVATION B				
QUAN.	WIDTH	HT.	WINDOW / DOOR FRAME SIZE (S.F.)	
1	28"	56"	8.67	
1	28"	48"	7.33	
1	56"	72"	24.56	
2	30"	52"	8.00	
2	30"	16"	4.33	
0	0"	0"	0.00	
0	0"	0"	0.00	
0	0"	0"	0.00	
0	0"	0"	0.00	
0	0"	0"	0.00	
0	ARCH	0"	0.00	
0	ARCH	0"	0.00	
0	ARCH	0"	0.00	
0	ARCH	0"	0.00	
0	ARCH	0"	0.00	
SPATIAL CALCULATION				
WALL AREA		881.08	S.F.	
LIMITING DISTANCE		7' 12.0"	%	
MAX. % OPENINGS		7	S.F.	
OPENINGS ALLOWED			S.F.	
OPENINGS PROVIDED		52.89	S.F.	
ADDITIONAL NOTES				
GLAZED AREA CALCULATED W/ FRAME SIZE				
MMMS 2' AROUND ENTIRE PERIMETER				

'THE DOGWOOD' - UNIT TO
REV.2015.06.2

ESQUIRE HOMES - 212043
RIVER RUN, AJAX, ONTARIO

Drawn By	Checked By	Scale	File Number	Page Number
HG	VS	3/16"=1'-0"	212043WT04	19 of 2
8966 Woodbine Avenue // Suite 200 // Markham, ON // L3R 0J7 T 905.737.5133 F 905.737.7326				

**REFER TO STANDARD
ELEVATION FOR TYPICAL
NOTES & INFORMATION**

ROOF OVERHANGS TO BE 12
UNLESS NOTED OTHERWISE

TOP OF PLATE

FACE BRICK (TYP.)

PRE-FIN. MTL.
FLASHING W/
CAULKING TO MATCH
BRICK COLOUR (TYP.)

FIN. SECOND FLR.

HUNT 
DESIGN ASSOCIATES INC.
www.huntdesign.ca

-CONT. PRECAST CONC. SILL
W/ 1/2" PROJ. (TYP.)

STONE VENEER (TYP.)

FIN. GROUND FLR.

FIN. GRADE

HYDRO GAS RUL
PANEL METER

FIN. BASEMENT SLAB

RCALDERON | TUE MAY 31/16 11:57 AM | K:\PROJECTS\2012\212043.ESQ\WORKING\TOWNS\212043\WT04.DWG

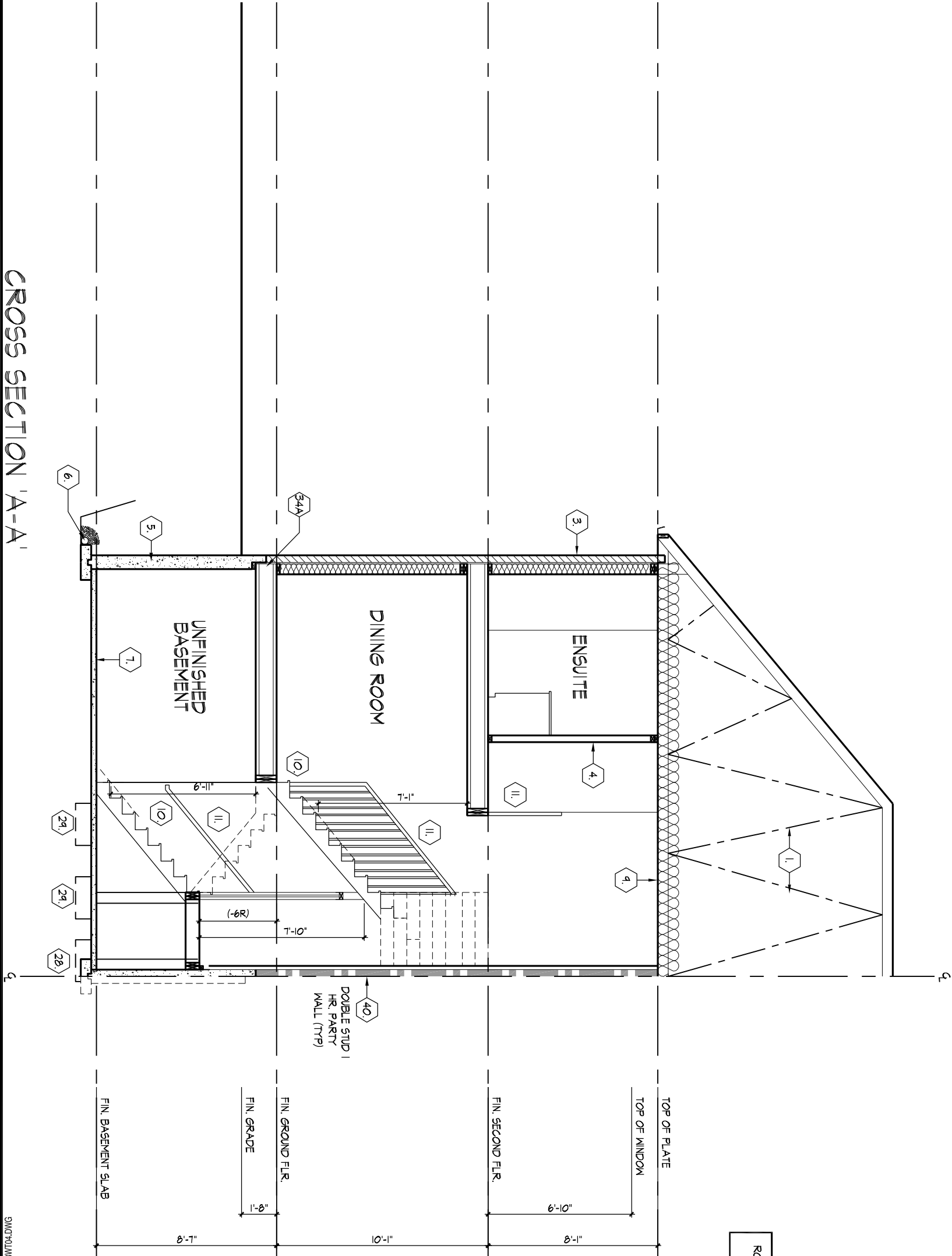
THE UNDERSIGNED HAS REVIEWED AND TAKES RESPONSIBILITY FOR THIS DESIGN AND HAS THE QUALIFICATIONS AND MEETS THE REQUIREMENTS SET OUT IN THE ONTARIO BUILDING CODE TO BE A DESIGNER.

QUALIFICATION INFORMATION

Vijay Shivpaul	294	
NAME	SIGNATURE	BC
REGISTRATION INFORMATION		
HUNT DESIGN ASSOCIATES INC.	196	

All drawings specifications related documents and design are the copyright property of Hunt Design Associates (H.D.A). Reproduction of this property in whole or in part is strictly prohibited without H.D.A.'s written permission (H.D.A. assumes no responsibility or liability for this property unless it bears the appropriate BCIN number and original signature).

CROSS SECTION 'A-A'



CROSS SECTION 'A-A'

THE UNDERSIGNED HAS REVIEWED AND TAKES RESPONSIBILITY FOR THIS DESIGN AND HAS THE QUALIFICATIONS AND MEETS THE REQUIREMENTS SET OUT IN THE ONTARIO BUILDING CODE TO BE A DESIGNER.

REGISTRATION INFORMATION

HUNT DESIGN ASSOCIATES INC. 19695

HUNT
DESIGN ASSOCIATES INC.
www.huntdesign.ca

ESQUIRE HOMES - 212043
RIVER RUN, AJAX, ONTARIO

Drawn By: HG
Checked By: VS
Scale: 3/16"=1'-0"

'THE DOGWOOD' - UNIT T04
REV.2015.06.22

File Number: 212043WT04
Page Number: 20 of 21

SECTION 1.0. CONSTRUCTION NOTES

1

ROOF CONSTRUCTION (9.19., 9.23.1.3., 9.23.1.5.)
No. 210 (10.25 kg/m2) ASPHALT SHINGLES, 3/8" (9.5) PLYWOOD SHEATHING WITH 1/4" CLIPS, APPROVED WOOD TRUSSES @ 24" (610) O.C., MAX. APPROVED EAVES PROTECTION TO EXTEND 2'-11" (890) FROM EDGE OF ROOF AND MIN. 12" (305) BEYOND INNER FACE OF EXTERIOR WALL, 2x4" (38x89) TRUSS BRACING @ 8'-0" (1830) O.C. AT BOARDS CHORD, PRETIN, ALONG EAVESTROUGH, FASCIA, RVL & VENTED SOFFIT, ATTIC VENTILATION: 1:300 OF INSULATED CEILING AREA WITH 50% AT EAVES, EAVESTROUGH TO BE 4" MIN. WITH RVL CONNECTED TO STORM SEWERS OR TO DISCHARGE ONTO CONCRETE SPLASH PADS AS PER MUNICIPAL REQUIREMENTS. TOWNHOUSES TO HAVE 5" (127) MIN. EAVESTROUGH WITH ELEC. TRACED HEATER CABLE ALONG EAVESTROUGH AND DOWN RVL.

1A

ICE AND WATER SHIELD
PROVIDE ICE AND WATER SHIELD IN THE AREAS INDICATED. THE ICE AND WATER SHIELD SHALL BE A SELF ADHERING AND SELF SEALING MEMBRANE, SIDE LAPS MUST BE A MINIMUM 3 1/2" (90) AND END LAPS A MINIMUM 6" (152), AND TO EXTEND UP DORMER WALLS A MINIMUM 12" (305).

1B

PROFILED ROOF TRUSSES
ROOF TRUSSES SHALL BE PROFILED AND/OR STEPPED AT RAISED COFFER/TRAY CEILINGS. ANGLED TRAY CEILINGS WILL BE SHEATHED W/ 3/8" (9.5) PLYWOOD.

2

SIDING WALL CONSTRUCTION (2"x6")
SIDING MATERIAL AS PER ELEVATION ATTACHED TO FRAMING MEMBERS, FURRING MEMBERS OR BLOCKING BETWEEN THE FRAMING MEMBERS ON APPROVED SHEATHING PAPER ON 3/8" (9.5) EXT. GRADE SHEATHING ON 2x6" (38x140) STUDS @ 16" (406) O.C., INSULATION, APPROVED 6 MIL POLYETHYLENE AIR/VAPOUR BARRIER, ON 1/2" (12.7) GYPSUM WALLBOARD INT. FIN. (GYPSUM SHEATHING, RIGID INSULATION, AND FIBERBOARD SHALL NOT BE USED FOR THE ATTACHMENT OF SIDING (9.23.16.3.(1.1)) (REFER TO 35 NOTE AS REQ.)

2B

SIDING WALL @ GARAGE CONSTRUCTION (2"x4")
SIDING MATERIAL AS PER ELEVATION ATTACHED TO FRAMING MEMBERS, FURRING MEMBERS OR BLOCKING BETWEEN THE FRAMING MEMBERS ON APPROVED SHEATHING PAPER ON 3/8" (9.5) EXTERIOR TYPE SHEATHING ON STUDS CONFORMING TO O.B.C (9.23.10.1.), & SECTION 1.1., 1/2" (12.7) GYPSUM WALLBOARD INTERIOR FINISH, RIGID INSULATION, RIGID INSULATION AND FIBERBOARD SHALL NOT BE USED FOR THE ATTACHMENT OF SIDING (9.23.16.3.(1.1)) (REFER TO 35 NOTE AS REQ.)

3

BRICK VENEER WALL CONSTRUCTION (2"x6")
3 1/2" (90) BRICK VENEER 1" (25) AIR SPACE, 7/8"x7/0.03" (22x180x.76) GALV. METAL TIES @ 16" (400) O.C. HORIZ. 24" (600) O.C. VERT. TIES TO BE IN CONTACT WITH WOOD STUDS ONLY (9.23.0.5.) APPROVED SHEATHING PAPER, 3/8" (9.5) EXTERIOR TYPE SHEATHING, 2x6" (38x140) STUDS @ 16" (406) O.C., INSULATION AND 6 mil POLYETHYLENE VAPOUR BARRIER WITH APPROVED CONTIN. AIR BARRIER, 1/2" (12.7) GYPSUM WALLBOARD INTERIOR FINISH, PROVIDE WEEP HOLES @ 32" (800) O.C. AT BOTTOM COURSE AND OVER OPENINGS. PROVIDE BASE FLASHING UP MIN. 6" (150) MIN. BEHIND BUILDING PAPER (9.20.13.6.) (REFER TO 35 NOTE AS REQUIRED)

3B

BRICK VENEER WALL @ GARAGE CONSTRUCTION (2"x4")
3 1/2" (90) BRICK VENEER 1" (25) AIR SPACE, 7/8"x7/0.03" (22x180x.76) GALV. METAL TIES @ 16" (400) O.C. HORIZ. 24" (600) O.C. VERT. TIES TO BE IN CONTACT WITH WOOD STUDS ONLY (9.23.0.5.) APPROVED SHEATHING PAPER, 3/8" (9.5) EXTERIOR TYPE SHEATHING ON STUDS CONFORMING TO O.B.C (9.23.10.1.) & SECTION 1.1., 1/2" (12.7) GYPSUM WALLBOARD INTERIOR FINISH, PROVIDE WEEP HOLES @ 32" (800) O.C. AT BOTTOM COURSE AND OVER OPENINGS. PROVIDE BASE FLASHING UP 6" (150) MIN. BEHIND BUILDING PAPER (9.20.13.6.) (REFER TO 35 NOTE AS REQ.)

4

INTERIOR STUD PARTITIONS (9.23.9.8., 9.23.10)
BEARING PARTITIONS SHALL BE A MINIMUM 2"x4" (38x89) @ 16" (406) O.C. FOR 2 STOREY AND 1" (25) O.C. FOR 3 STOREY. NON-BEARING PARTITIONS 2"x4" (38x89) @ 24" (610) O.C. PROVIDE 2"x4" (38x89) BOTTOM PLATE AND 2"x4" (38x89) TOP PLATE, 1/2" (12.7) INT. DRYWALL BOTH SIDES OF STUDS, PROVIDE 2x6" (38x140) STUDS WHERE NOTED. PROVIDE 2x4" (38x89) @ 24" (610) O.C. LADDER FRAMING WHERE WALLS INTERSECT PERPENDICULAR TO ONE ANOTHER. PROVIDE 2x4" (38x89) WOOD BLOCKING ON FLAT @ 3'-11" (1194) O.C. MAX. BETWEEN FLOOR JOISTS WHEN NON-LOADBEARING WALLS ARE PARALLEL TO FLOOR JOISTS.

4A

EXT. LOFT WALL CONSTRUCTION - NO CLADDING (2"x6")
3/8" (9.5) EXTERIOR TYPE SHEATHING, 2x6" (38x140) STUDS @ 16" (406) O.C. INSULATION AND 6 mil POLYETHYLENE VAPOUR BARRIER WITH APPROVED CONTIN. AIR BARRIER, 1/2" (12.7) GYPSUM WALLBOARD INT. FINISH. (9.23.)

5

FOUNDATION WALL/FOOTINGS
15MPa (2200 PSI) POURED CONC. FOUNDATION WALL ON CONTINUOUS KEYED CONCRETE FOOTING. THE OUTSIDE OF THE FOUNDATION SHALL BE DAMPROOFED FROM THE TOP OF THE FOOTING TO FINISHED GRADE AND BRUSH COAT FROM THE TOP OF THE FOOTING TO FINISHED GRADE. PROVIDE A DRAINAGE LAYER ON THE OUTSIDE OF THE FOUNDATION WALL, SEAL THE DRAINAGE LAYER AT THE TOP. THE TOP OF THE CONC. FOOTING SHALL BE DAMPROOFED. CONCRETE FOOTINGS SUPPORTING JOIST SPANS GREATER THAN 16'-1" (4900) SHALL BE SIZED IN ACCORDANCE WITH 9.15.3.4 (1),(2) OF THE O.B.C. (REFER TO CHART BELOW FOR RESPECTIVE SIZE). BRACE FOUNDATION WALL PRIOR TO BACKFILLING. ALL FOOTINGS SHALL REST ON NATURAL UNDISTURBED SOIL OF 75kPa OR COMPACTED ENGINEERED FILL WITH MIN. BEARING CAPACITY OF 150kPa. IF SOIL BEARING DOES NOT MEET MINIMUM CAPACITY, ENGINEERED FOOTINGS ARE REQUIRED. ACTUAL SOIL BEARING CAPACITY TO BE VERIFIED WITH SOIL ENGINEERING REPORT.
REFER TO CONSTRUCTION DRAWINGS AND DETAILS FOR FOUNDATION WALL STRENGTH AND THICKNESS A/E 9.15.4.
FOUNDATION WALLS SHALL NOT EXCEED 9'-10" (3.0m) IN UNSUPPORTED HEIGHT UNLESS OTHERWISE NOTED. (9.15.4.2.(1.1))

UNREINFORCED SOLID CONCRETE FOUNDATION WALLS (9.15.4.2.)					
20 MPa	STRENGTH THICKNESS	MAX. HEIGHT FROM FIN. SLAB TO GRADE			
		UNSUPPORTED		SUPPORTED AT TOP	
		AT TOP	≤2.5m	>2.5m & ≤2.75m	>2.75m & ≤3.0m
8"	3'-11" (1.20m)	7'-0" (2.15m)	7'-0" (2.15m)	6'-10" (2.10m)	
10"	4'-7" (1.40m)	7'-6" (2.30m)	8'-6" (2.60m)	8'-2" (2.50m)	
12 MPa	12"	4'-11" (1.50m)	7'-6" (2.30m)	8'-6" (2.60m)	9'-3" (2.85m)
20 MPa	8"	3'-11" (1.20m)	7'-6" (2.30m)	7'-6" (2.30m)	7'-2" (2.20m)
	10"	4'-7" (1.40m)	7'-6" (2.30m)	8'-6" (2.60m)	9'-3" (2.85m)
	12"	4'-11" (1.50m)	7'-6" (2.30m)	8'-6" (2.60m)	9'-3" (2.85m)

MINIMUM STRIP FOOTING SIZES FOR EXTERIOR WALLS (9.15.3.)				
NUMBER FLOORS SUPPORTED	SUPPORTING INTERIOR	SUPPORTING EXTERIOR	SUPPORTING MASONRY PARTYWALL	
1	16" WIDE x 6" THICK	16" WIDE x 6" THICK	16" WIDE x 6" THICK	
2	24" WIDE x 8" THICK	20" WIDE x 6" THICK	24" WIDE x 8" THICK	
3	36" WIDE x 14" THICK	26" WIDE x 9" THICK	36" WIDE x 14" THICK	

5A

FOUNDATION REDUCTION IN THICKNESS FOR MASONRY
WHERE THE TOP OF THE FOUNDATION WALL IS REDUCED IN THICKNESS TO PERMIT THE INSTALLATION OF MASONRY EXTERIOR FACING, THE REDUCED SECTION SHALL BE NOT LESS THAN 3 1/2" (90) THICK. THE BRICK VENEER SHALL BE TIED TO THE FOUNDATION WALL WITH CORROSION RESISTANT METAL TIES @ 7/78" (200) VERTICAL AND 2'-11" (889) HORIZONTAL. FLT VOID WITH MORTAR BETWEEN WALL AND BRICK VENEER (9.15.4.7(2)(3) & 9.20.9.4(3))

5B

FOUNDATION REDUCTION IN THICKNESS FOR JOISTS
WHERE THE TOP OF THE FOUNDATION WALL IS REDUCED IN THICKNESS TO PERMIT THE INSTALLATION OF FLOOR JOISTS, THE REDUCED SECTION SHALL BE NOT MORE THAN 13 3/4" (350) HIGH & NOT LESS THAN 3 1/2" (90) THICK (9.15.4.7(1))

6

WEEPING TILE (9.14.3.)
4" (100) Ø WEEPING TILE W/ FILTER CLOTH WRAP & 6" (152) CRUSHED STONE COVER

7

BASEMENT SLAB OR SLAB ON GRADE (9.16.4.3.)
3" (80) MIN. 25MPa (3600psi) CONC. SLAB ON 4" (100) COARSE GRANULAR FILL, OR 20MPa (2900psi) CONC. WITH DAMPROOFING BELOW SLAB, PROVIDE 1/2" (12.7) IMPERVIOUS BOARD FOR BOND BREAK AT EDGE. (9.13.) WHERE A BASEMENT SLAB IS WITHIN 24" (610) OF THE EXTERIOR GRADE PROVIDE RIGID INSUL. AROUND THE PERIMETER EXTENDING MIN. 24" (610) BELOW GRADE. FOR SLAB ON GRADE CONDITIONS RIGID INSULATION SHALL BE APPLIED TO THE UNDERSIDE OF THE ENTIRE SLAB. (ISB-12) 2.1.1.6.(5) & (6)

8

EXPPOSED FLOOR TO EXTERIOR
PROVIDE SPRAY FOAM INSULATION BETWEEN CANT. JOIST AND INSTALL. FIN. SOFFIT OR CLADDING AS PER ELEVATION TO W/ OF EXPOSED CANT. JOIST.

9

EXPPOSED CEILING TO EXTERIOR w/ ATTIC
INSULATION, 6 mil POLYETHYLENE VAPOUR BARRIER, 1/2" (12.7) GYPSUM BOARD INTERIOR FINISH OR APPROVED EQ.

9A

EXPPOSED CEILING TO EXTERIOR w/o ATTIC
PROVIDE SPRAY FOAM INSULATION, 6 mil POLYETHYLENE VAPOUR BARRIER, 5/8" (15.9) GYPSUM BOARD INT. FINISH OR APPROVED EQ. (CANULC-S705.2, 9.19.1.)

10

ALL STAIRS/EXTERIOR STAIRS (9.8.1.2., 9.8.2., 9.8.4.)

MAX. RISE	MIN. RISE	MAX. RUN	MIN. RUN	MIN. TREAD	MIN. TREAD
PRIVATE 7/16" (200)	5" (125)	14" (355)	8 1/4" (210)	14" (355)	9 1/4" (235)
PUBLIC 7" (180)	5" (125)	NO LIMIT	11" (280)	NO LIMIT	11" (280)

MIN. STAIR WIDTH	CURVED STAIRS	ALL STAIRS
PRIVATE 2'-10" (860)	MIN. RUN 5' 7/8" (150)	MAX. NOSING 1" (25)
PUBLIC 2'-11" (900)	MIN. AVG. RUN 7' 7/8" (200)	

** HEIGHT OVER STAIRS (HEADROOM) IS MEASURED VERTICALLY ACROSS WIDTH OF STAIRS FROM A STRAIGHT LINE TO THE TREAD & LANDING NOSING TO LOWEST POINT ABOVE AND NOT LESS THAN 6'-6" (1950) FOR SINGLE DWELLING UNIT & 6'-8 3/4" (2050) FOR EVERYTHING ELSE. (9.8.2.2.) REQUIRED LANDING IN GARAGE - O.B.C. 9.8.6.2.(3.)
FOR AN EXTERIOR STAIR SERVING A GARAGE - W/ MORE THAN 3 RISERS. GUARDS, HANDRAILS & STEPS AS PER CONSTRUCTION HEX NOTE 10 & 11.

11

GUARDS/RAILINGS (9.8.7., 9.8.8.)
GUARDS TO BE DESIGNED NOT TO FACILITATE CLIMBING AND PROVIDING MAX. OPENING CONFORMING TO O.B.C. 9.8.8.5. & 9.8.8.6. AND BE ABLE TO RESIST LOADS AS PER TABLE 9.8.8.2.
GUARD HEIGHTS - O.B.C. 9.8.8.
INTERIOR GUARDS: 2'-11" (900) MIN.
EXTERIOR GUARDS: 2'-11" (900) MIN. (LESS THAN 5'-11" (1800) TO GRADE) 3'-6" (1070) MIN. (MORE THAN 5'-11" (1800) TO GRADE)
GUARDS FOR EXIT STAIRS: 3'-0" (920) MIN.
GUARDS FOR LANDINGS @ EXIT STAIRS: 3'-6" (1070) MIN.
GUARDS FOR FLOORS & RAMPS IN GARAGES (SERVICE STAIRS)
FLOOR OR RAMP W/O EXTERIOR WALLS THAT IS 23 5/8" (600) OR MORE ABOVE ADJACENT SURFACE REQUIRES CONT. CURB MIN. 6" (150) HIGH, AND GUARD MIN. 3'-0" (920) HIGH.
REQUIRED GUARDS:
- BETWEEN WALKING SURFACE & ADJACENT SURFACE WITH A DIFFERENCE IN ELEVATION MORE THAN 23 5/8" (600) OR ADJACENT SURFACE WITH 3'-11" (1200) & WALKING SURFACE W/ A SLOPE MORE THAN 1 IN 12 SHALL BE PROTECTED WITH GUARDS PER CONSTRUCTION HEX NOTE 11.
HANDRAIL HEIGHTS - O.B.C. 9.8.7. - REQUIRED AS PER 9.8.7.1.(3)
MIN. HEIGHT AT STAIRS OR RAMP: 2'-10" (865)
MAX. HEIGHT AT STAIRS OR RAMP: 3'-2" (965)
MAX. HEIGHT AT LANDING: 3'-6" (1070)
STAIRS OR RAMP MIN. 7'-3" (2200) WIDE: 2'-9" (865) MIN. HEIGHT

12

SILL PLATES
2x4" (38x89) SILL PLATE WITH 1/2" (12.7) Ø ANCHOR BOLTS 8" (200) LONG. EMBEDDED MIN. 4" (100) INTO CONC. @ 7'-10" (2388) O.C., CAULKING OR GASKET BETWEEN PLATE AND TOP OF FOUNDATION WALL. USE NON-SHRINK GROUT TO LEVEL SILL PLATE WHEN REQUIRED (9.23.7.)

13

BASEMENT INSULATION (ISB-12) 2.1.1.6.)
PROVIDE BLANKET INSULATION W/ BUILT IN 6 mil POLYETHYLENE VAPOUR BARRIER, INSULATION TO EXTEND NO MORE THAN 8" (200) ABOVE FINISHED BASEMENT FLOOR, DAMPROOFED WITH BUILDING PAPER BETWEEN THE FOUNDATION WALL AND INSULATION UP TO GRADE LEVEL.

14

BEARING STUD PARTITION IN BASEMENT (9.15.3.6., 9.23.10.1.)
2x4" (38x89) STUDS @ 16" (406) O.C., 2x4" (38x89) SILL PLATE ON DAMPROOFING MATERIAL OR STEEL TOP PLATE TIE IN 4x3/8" 1/2" (12.7) Ø ANCHOR BOLTS 8" (200) LONG. EMBEDDED 4" (100) MIN. INTO CONC. @ 7'-10" (2380) O.C. 4" (100) HIGH CONC. CURB ON CONC. FOOTING, FOR SIZE REFER TO HEX NOTE 5. ADD HORIZ. BLOCKING AT MID-HEIGHT IF WALL IS UNFINISHED.

15

ADJUSTABLE STEEL BASEMENT COLUMN (9.17.3.4.)
9'-10" (3000) MAX. SPAN BETWEEN COLUMNS, 3 1/2" (90) Ø SINGLE TUBE ADJUSTABLE STEEL COLUMN CONFORMING TO CAN/CSSB-7.2M. AND WITH 6"x6"x3/8" (152x152x9.5) STEEL PLATE TOP & BOTTOM, FIELD WELD BASEMENT COLUMN CONNECTION. 3/4"x3/4"x1/8" (870x870x41) CONC. FOOTING ALL ON NATURAL UNDISTURBED SOIL OF 75kPa OR COMPACTED ENGINEERED FILL WITH MIN. BEARING CAPACITY OF 150kPa AS PER SOILS REPORT.

15A

NON-ADJUSTABLE STEEL BASEMENT COLUMN
3 1/2" (90) Ø x 0.188" (4.78) NON-ADJUSTABLE STEEL COLUMN WITH 6"x6"x3/8" (152x152x9.5) STEEL PLATE TOP & BOTTOM, FIELD WELD BASEMENT COLUMN CONNECTION. 42"x42"x1/8" (1070x1070x460) CONC. FOOTING ALL ON NATURAL UNDISTURBED SOIL OF 75kPa OR COMPACTED ENGINEERED FILL WITH MIN. BEARING CAPACITY OF 150kPa AS PER SOILS REPORT.

15B

NON-ADJUSTABLE STL. COLUMN AT FOUNDATION WALL
3 1/2" (90) Ø x 0.188" (4.78) NON-ADJUSTABLE STEEL COLUMN WITH 6"x6"x3/8" (152x152x9.5) STEEL PLATE TOP & BOTTOM, FIELD WELD BASEMENT COLUMN CONNECTION. 42"x42"x1/8" (1070x1070x460) CONC. FOOTING ALL ON NATURAL UNDISTURBED SOIL OF 75kPa OR COMPACTED ENGINEERED FILL WITH MIN. BEARING CAPACITY OF 150kPa AS PER SOILS REPORT.

16

STEEL BEAM BEARING AT FOUNDATION WALL (9.23.8.1.)
BASE POCKET OR 8"x8" (200x200) POURED CONC. NIB WALLS, MIN. BEARING 3 1/2" (90).

17

WOOD STRAPPING AT STEEL BEAMS (9.23.4.3.(3.), 9.23.9.3.)
1"x3" (19x64) CONTIN. WOOD STRAPPING BOTH SIDES OF STEEL BEAM.

18

GARAGE SLAB (9.16., 9.3.5.)
4" (100) 32MPa (4640psi) CONC. SLAB WITH 5-8% AIR ENTRAINMENT ON OPT. 4" (100) COARSE GRANULAR FILL WITH COMPACTED SUB-BASE OR COMPACTED NATIVE FLT. SLOPE TO FRONT @ 1% MIN.

19

GARAGE TO HOUSE WALLS/CEILING (9.10.9.16.)
1/2" (12.7) GYPSUM BOARD ON WALL AND CEILING BETWEEN HOUSE AND GARAGE, PLUS REQUIRED INSULATION IN WALLS AND SPRAY FOAM FOR CEILINGS, TAPE AND SEAL ALL JOINTS GAS TIGHT.

20

GARAGE DOOR TO HOUSE (9.10.9.16., 9.10.13.10., 9.10.13.15.)
GAS-PROOF DOOR AND FRAME, DOOR EQUIPPED WITH SELF CLOSING DEVICE AND WEATHER STRIPPING.

21

EXTERIOR AND GARAGE STEPS
PRECAST CONC. STEP OR WOOD STEP WHERE NOT EXPOSED TO WEATHER. MAX RISE 7/8" (200) MIN. TREAD 9'-4" (235). FOR THE REQUIRED NUMBER OF STEPS REFER TO SITING AND GRADING PLAN OF THIS UNIT FOR CONFIRMATION. STAIRS WITH MORE THAN 2 RISERS AND 2 TREADS SHALL BE PROVIDED WITH FOUNDATION AS REQUIRED BY ARTICLE 9.8.9.2. OR SHALL BE CANTILEVERED AS PER SUBSECTION 9.8.10.

22

DRYER EXHAUST
CAPPED DRYER EXHAUST VENTED TO EXT. CONFORMING TO PART 6, OBC 9.32.

23

ATTIC ACCESS (9.19.2.1.)
ATTIC ACCESS HATCH WITH MIN. AREA OF 0.32m2 AND NO DIM. LESS THAN 21 1/2" (645) WITH WEATHER STRIPPING, HATCHWAYS TO THE ATTIC OR ROOF SPACE SHALL BE FITTED WITH DOORS OR COVERS AND WILL BE INSULATED WITH MIN. R20 (RSI 3.52) (ISB-12) 2.1.1.7.(11))

24

FIREPLACE CHIMNEYS (9.21.)
TOP OF FIREPLACE CHIMNEY SHALL BE 2'-11" (889) ABOVE THE HIGHEST POINT AT WHICH IT COMES IN CONTACT WITH THE ROOF AND 2'-0" (610) ABOVE THE ROOF SURFACE WITHIN A HORIZ. DISTANCE OF 10'-0" (3048) FROM THE CHIMNEY.

25

LINEN CLOSET
PROVIDE 4 SHELVES MIN. 14" (356) DEEP.

26

MECHANICAL VENTILATION (9.32.1.3.)
MECHANICAL EXHAUST FAN, VENTED TO EXTERIOR, TO PROVIDE AT LEAST ONE AIR CHANGE PER HOUR. SEE GENERAL NOTE 2.3.

27

PARTY WALL BEARING (9.23.8)
12"x12"x5/8" (280x280x15.9) STEEL PLATE FOR STEEL BEAMS AND 12"x12"x1/2" (280x280x12.7) STEEL PLATE FOR WOOD BEAMS BEARING MIN. 3'-12" (89) ON CONC. BLOCK PARTY WALL, ANCHORED WITH 2-3/4" (2-19) x 8" (200) LONG GALV. ANCHORS WITHIN SOLID BLOCK COURSE. LEVEL W/ NON-SHRINK GROUT. REFER TO NOTE SOLID BEARING (SECTION 3.0) FOR WD. STUD PARTY WALL.

28

WOOD FRAMING IN CONTACT TO CONCRETE
WOOD BEARING WALLS AND BUILT-UP WOOD POSTS/BEAMS ADJACENT TO FOUNDATION WALLS SHALL BE SEPARATED FROM THE CONCRETE BY AT LEAST 1/2" mil POLY. THE UNDERSIDE OF BUILT-UP WOOD POSTS AND SILLS SHALL BE WRAPPED WITH 2 mil POLY. STRIP FOOTINGS SUPPORTING THE FOUNDATION WALL SHALL BE WIDENED 6" (152) BELOW THE BEARING WALL AND/OR WOOD POST. (9.17.4.3.)

29

BUILT-UP WOOD POST AND FOOTING
3-2x6" (3-38x140) BUILT-UP WOOD POST (UNLESS OTHERWISE NOTED) ON METAL BASE SHOE ANCHORED TO CONC. WITH 1/2" (12.7) Ø BOLT, 24"x24"x1/2" (610x610x305) CONC. FOOTING. (9.17.4.1., 9.15.3.7.)

30

STEP FOOTINGS (9.15.3.9.)
MIN. HORIZ. STEP = 23 5/8" (600). MAX. VERT. STEP = 23 5/8" (600).
CONC. PORCH SLAB (9.16.4.)
MIN. 4" (100) CONCRETE SLAB ON GRADE ON 4" (100) COARSE GRANULAR FILL, REINFORCED WITH 6x6xW2.9kW2.9 MESH PLACED NEAR MID-DEPTH OF SLAB. CONC. STRENGTH 32MPa (4640psi) WITH 5-8% AIR ENTRAINMENT ON COMPACTED SUB-GRADE.

31

FURNACE VENTING (9.32.)
DIRECT VENT FURNACE TERMINAL MIN. 3'-0" (915) FROM A GAS REGULATOR, MIN. 12" (305) ABOVE FIN. GRADE, FROM ALL OPENINGS, EXHAUST AND INTAKE VENTS, HRV INTAKE TO BE A MIN. 0'-0" (1830) FROM ALL EXHAUST TERMINALS. REFER TO GAS UTILIZATION CODE.

32

FIREPLACE VENTING (9.32.3.)
DIRECT VENT GAS FIREPLACE VENT TO BE A MIN. 12" (305) FROM ANY OPENING AND ABOVE FIN. GRADE. REFER TO GAS UTILIZATION CODE.

34

FLOOR FRAMING (9.23.3.5., 9.23.9.4., 9.23.14.)
T&G SUBFLOOR ON WOOD FLOOR JOISTS. FOR CERAMIC TILE APPLICATION SEE O.B.C. 9.30.6. ALL JOISTS WHERE REQUIRED TO BE BRIDGED WITH 2x2" (38x38) CROSS BRACING OR SOLID BLOCKING @ 6'-11" (2108) O.C. MAX. ALL JOISTS TO BE STRAPPED WITH 1x3" (19x64) @ 6'-11" (2108) O.C. UNLESS A PANEL, TYPE CEILING FINISH IS APPLIED.

34A

HEADER CONSTRUCTION
PROVIDE CONTINUOUS APPROVED AIR/VAPOUR BARRIER (HEADER WRAP) AROUND THE SILL PLATE, AROUND THE RIB BOARD AND UNDER THE BOTTOM PLATE. THE HEADER WRAP SHALL EXTEND 6" (152) BELOW THE TOP OF FOUNDATION WALL AND WILL BE SEALED TO THE CONCRETE FOUNDATION WALL. EXTEND HEADER WRAP COVER FROM BOTTOM OF SLAB TO FIRST WALL AND OVERLAP WITH THE VAPOUR BARRIER AND SEAL THE JOINT. ALL EDGES/JOINTS MUST BE MECHANICALLY CLAMPED.

35

EXPPOSED BUILDING FACE w/ LIMITING DISTANCE <= 3'-11" (1.20m)
WALL ASSEMBLY CONTAINS INSULATION CONFORMING TO CAN/ULC-S702 & HAVING A MASS OF NOT LESS THAN 1,22 kg/m2 OF WALL SURFACE AND 1/2" (12.7) 7.5MPa GYPSUM WALLBOARD INTERIOR FINISH. EXTERIOR CLADDING MUST BE NON-COMBUSTIBLE. WALL ASSEMBLY REQUIRES TO HAVE A FIRE RESISTANCE RATING OF NOT LESS THAN 45 MINUTES & CONFORMING TO O.B.C. (9.10.14, OR 9.10.15). REFER TO DETAILS FOR TYPE & SPECS.

36

COLD CELLAR PORCH SLAB (9.39.)
FOR MAX. 8'-2" (2500) PORCH DEPTH, 3" (127) 32 MPa (4640psi) CONC. SLAB W/ 5-8% AIR ENTRAINMENT, REINF. WITH 10M BARS @ 7'-7" (200) O.C. EACH DIR. ELEV. MIN. W/ 1'-14" (430) CURB OR CONCRETE CURB FROM BOTTOM OF SLAB TO FIRST LAYER OF BARS & SECOND LAYER OF BARS LAID DIRECTLY ON TOP OF LOWER LAYER IN OPPOSITE DIR. 24"x24" (610x610) 10M DOWELS @ 23 5/8" (600) O.C., ANCHORED IN PERIMETER FDN. WALLS, SLOPE SLAB 1.0% FROM DOOR.

37

RANGE HOODS AND RANGE-TOP FANS
COOKING APPLIANCE EXHAUST FANS VENTED TO EXTERIOR MUST CONFORM TO OBC 9.32.3.9. & 9.32.3.10.

38

CONVENTIONAL ROOF FRAMING (9.23.13., 9.23.15.)
2x6" (38x140) RAFTERS @ 16" (406) O.C., 2x6" (38x184) RIDGE BOARD, 2x4" (38x89) COLLAR TIES AT MID-SPAN, CEILING JOISTS TO BE 2x4" (38x89) @ 16" (406) O.C. FOR MAX. 9'-3" (2819) SPAN & 2x6" (38x140) @ 16" (406) O.C. FOR MAX. SPAN 14'-7" (4450). RAFTERS FOR BUILT UP ROOF OVER PRE-ENGINEERED ROOF TRUSSES AND OR CONVENTIONAL FRAMING TO BE 2x4" (38x89) @ 24" (610) O.C. UNLESS OTHERWISE SPECIFIED.

39

TWO STOREY VOLUME SPACES (9.23.10.1., 9.23.11., 9.23.16.)

WALL ASSEMBLY	WIND LOADS	
	<= 0.5 kPa (g50)	> 0.5 kPa (g50)
EXTERIOR STUDS	SPACING MAX HEIGHT	SPACING MAX HEIGHT
BRICK (2-38x140) SPR.#2	12" (305) O.C., 18'-4" (5588)	8" (200) O.C., 18'-4" (5588)
SIDING	16" (406) O.C., 18'-4" (5588)	12" (305) O.C., 18'-4" (5588)
BRICK 2-2x6" ENGINEER STUDS	12" (305) O.C., 21'-0" (6400)	12" (305) O.C., 21'-0" (6400)
SIDING	16" (406) O.C., 21'-0" (6400)	18" (457) O.C., 21'-0" (6400)

STUDS ARE TO BE CONTINUOUS, C/W 3/8" (9.5) THICK EXTERIOR PLYWOOD SHEATHING, PROVIDE SOLID WOOD BLOCKING BETWEEN WOOD STUDS @ 4'-0" (1220) O.C. VERTICALLY.
- FOR HORIZ. DISTANCES LESS THAN 9'-6" (2896) PROVIDE 2x6" (38x140) STUDS @ 16" (406) O.C. WITH CONTIN. 2-2x6" (2-38x140) TOP PLATE & 1-2x6" (1-38x140) BOTTOM PLATE. OR: 3-2x6" (3-38x184) CONT. HEADER AT GROUND FLOOR CEILING LEVEL TOE-NAILED & GLUED AT TOP, BOTTOM PLATES & HEADERS.
- SUBJECT TO BE APPROVED BY PROJECT ENGINEER OR ENGINEERED LUMBER MANUFACTURER.

40

1 HR. PARTY WALL (CONC. BLOCK) (ISB-3) WALL TYPE 'B6' & 'B1b')
1/2" (12.7) GYPSUM SHEATHING ON EACH SIDE ON 2x2" (38x38) VERTICAL WD. STRAPPING @ 24" (610) O.C. ON 8" (200) CONC. BLOCK FILL STRAPPING CAVITY EACH SIDE WITH AT LEAST 90% OF ABSORPTIVE MATERIAL. PROCESSED FROM ROCK, SLAG OR GLASS, TAPE, FILL & SAND ALL GYPSUM JOINTS. EXPOSED BLOCK MUST BE SEALED W/ 2 COATS OF PAINT OR FURRED WITH 2x2" (38x38) WD. STRAPPING & 1/2" (12.7) GYPSUM SHEATHING.

40

1 HR. PARTY WALL (DOUBLE STUD) (ISB-3) WALL TYPE 'W13c')
5/8" (15.9) TYPE 'X' GYPSUM SHEATHING ON EXTERIOR SIDE OF 2 ROWS OF 2x4" (38x89) STUDS @ 16" (406) O.C., MIN. 1" (25) APART ON SEPARATE 2x4" (38x89) SILL PLATES, FILL ONE SIDE OF STUD CAVITY WITH AT LEAST 90% OF ABSORPTIVE MATERIAL PROCESSED FROM ROCK, SLAG OR GLASS, TAPE FILL AND SAND ALL GYPSUM JOINTS.

40A

2 HR. FIREWALL (ISB-3) WALL TYPE 'B6' & 'B2g')
1/2" (12.7) GYPSUM SHEATHING ON EACH SIDE ON 2x2" (38x38) VERTICAL WOOD STRAPPING @ 24" (610) O.C. ON 8" (200) CONC. BLOCK 75% SOLID, FILL STRAPPING CAVITY EACH SIDE WITH AT LEAST 90% OF ABSORPTIVE MATERIAL PROCESSED FROM ROCK, SLAG OR GLASS, TAPE, FILL & SAND ALL GYPSUM JOINTS AT UNFINISHED AREAS. EXTERIOR FACE OF CONC. BLOCK TO BE SEALED WITH 2 COATS OF PAINT, GYPSUM SHEATHING TO BE ATTACHED TO CONC. BLOCK, (REFER TO DETAILS)

41

STUCCO WALL CONSTRUCTION (2"x6")
STUCCO FINISH CONFORMING TO O.B.C. SECTION 9.28. AND APPLIED PER MANUFACTURERS SPECIFICATIONS OVER 1 1/2" (38) MIN. EXTERIOR RIGID INSULATION BOARD ON APPROVED DRAINAGE MAT ON 1/2" (12.7) DENSGLASS GOLD GYPSUM BOARD ON 2x6" (38x140) SPRUCE STUDS @ 16" (406) O.C. INSULATION, APPROVED 6 MIL. POLYETHYLENE VAPOUR BARRIER, 1/2" (12.7) GYPSUM WALLBOARD INTERIOR FINISH, (REFER TO 35 NOTE AS REQUIRED)

41B

STUCCO WALL @ GARAGE CONST. (2"x4")
STUCCO FINISH CONFORMING TO O.B.C. SECTION 9.28. AND APPLIED PER MANUFACTURERS SPECIFICATIONS OVER 1 1/2" (38) MIN. EXTERIOR RIGID INSUL. BOARD ON APPROVED DRAINAGE MAT ON 1/2" (12.7) DENSGLASS GOLD GYPSUM BRD. ON STUDS CONFORMING TO O.B.C (9.23.10.1.) & SECTION 1.1., 1/2" (12.7) GYPSUM WALLBOARD INT. FINISH. (REFER TO 35 NOTE AS REQ.)

42

UNSUPPORTED FOUNDATION WALLS (9.15.4.2.)
REINFORCING AT STAIRS AND SUNKEN FLOOR AREAS
2-20M BARS IN TOP PORTION OF WALL (UP TO 8'-0" OPENING)
3-20M BARS IN TOP PORTION OF WALL (8'-0" TO 10'-0" OPENING)
4-20M BARS IN TOP PORTION OF WALL (10'-0" TO 15'-0" OPENING)
- BARS STACKED VERTICALLY AT INTERIOR FACE OF WALL
REINFORCING AT BASEMENT WINDOWS
2-15M HORIZ. REINFORCING ON THE INSIDE AND OUTSIDE FACE OF THE FOUNDATION WALL BELOW THE WIN. SILL. EXTEND BARS 24" (610) BEYOND THE OPENING, 2-15M VERTICAL REINFORCING ON THE INSIDE AND OUTSIDE FACE OF THE FOUNDATION WALL ON EACH SIDE OF THE WINDOW OPENING.
- BARS TO HAVE MIN. 2" (50) CONC. COVER
- BARS TO EXTEND 2'-0" (610) BEYOND BOTH SIDES OF OPENING

43

STUD WALL REINFORCEMENT
PROVIDE STUD WALL REINFORCEMENT IN MAIN BATHROOM CONFORMING TO O.B.C. (9.5.2.3.(1) AND 3.8.3.8.(3)) (REFER TO DETAILS)

44

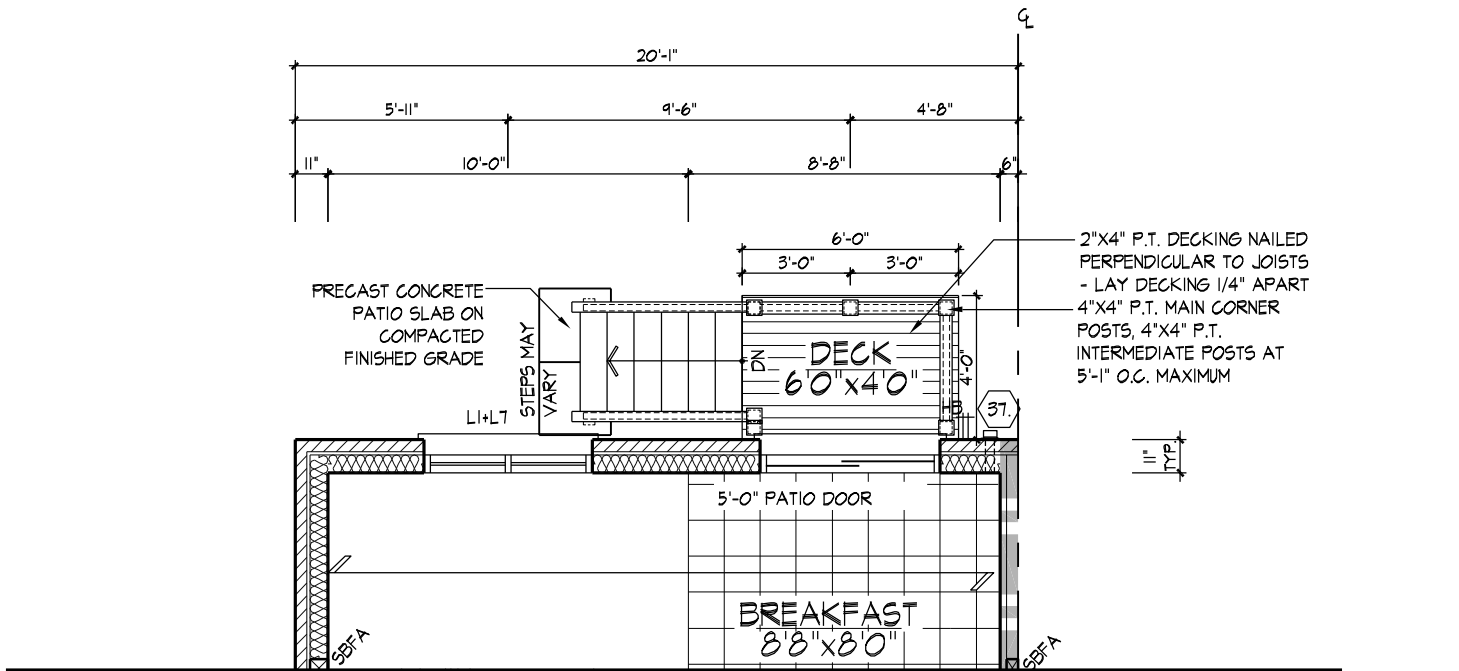
WINDOW WELLS
WHERE A WINDOW OPENS INTO A WINDOW WELL, A CLEARANCE OF NOT LESS THAN 21 5/8" (550) SHALL BE PROVIDED IN FRONT OF THE WINDOW. EVERY WINDOW WELL SHALL BE DRAINED TO THE FOOTING LEVEL OR OTHER SUITABLE LOCATION WITH A 4" (100) WEEPING TILE C/W A FILTER CLOTH WRAP AND FILLED WITH CRUSHED STONE. (9.9.10.1.(5), 9.14.6.3.)

45

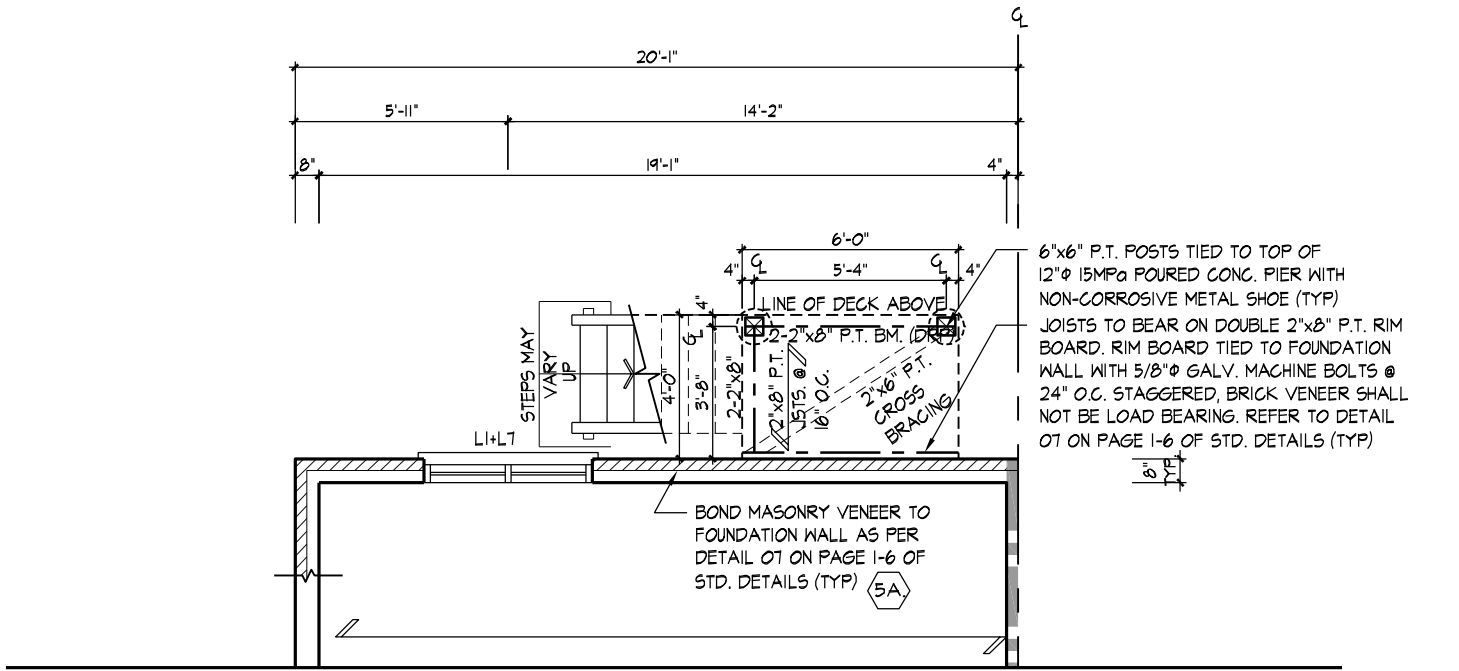
SLOPED CEILING CONSTRUCTION (ISB-12) 2.1.1.7., 9.23.4.2.)
2"x12" (38x286) ROOF JOISTS @ 16" (406) O.C. MAX. (UNLESS OTHERWISE NOTED) W/ 2x2" (38x38) PURLINS @ 16" (406) O.C. PERPENDICULAR TO ROOF JOIST (PURLINS NOT REQ. W/ SPRAY FOAM), W/ INSULATION BETWEEN JOIST, 6 mil POLYETHYLENE VAPOUR BARRIER, 1/2" (12.7) GYPSUM WALLBOARD INT. FINISH OR APPROVED EQ. INSULATION VALUE DIRECTLY ABOVE THE INNER SURFACE OF EXTERIOR WALLS SHALL NOT BE LESS THAN R20 (3.52 RSI).

46

FLAT ROOF/BALCONY CONSTRUCTION
WATERPROOFING MEMBRANE FULLY ADHERED TO 5/8" (15.9) T&G EXTERIOR GRADE PLYWOOD SHEATHING ON 2x2" (38x38) PURLINS ANGLED TOWARDS SCUPPER @ 2% MINIMUM LAID PERPENDICULAR TO 2x6" (38x184) FLOOR JOISTS @ 16" (406) O.C. (UNLESS OTHERWISE NOTED), BUILT UP CURB TO BE 4" (100) MIN. ABOVE FINISHED BALCONY FLOOR. CONTINUOUS 1" TRIM DRIP EDGE TO BE PROVIDED ON OUTSIDE FACE OF CURB. SCUPPER DRAIN TO BE LOCATED 24" (610) MIN. AWAY FROM WEAHER, PREFINISHED ALUMIN



GROUND FLOOR PLAN,
ELEV. 'A' - L.O.D. COND.
'A' MOD, 'A' END AND 'B' SIMILAR



BASEMENT PLAN,
ELEV. 'A' - L.O.D. COND.
'A' MOD, 'A' END AND 'B' SIMILAR



REAR ELEVATION 'A', 'B' & 'B-MOD'
L.O.D. CONDITION
'A' UPG. SIMILAR

WINDOW SIZES FOR L.O.D. CONDITIONS:
MATCH WIDTH OF WINDOW ABOVE AND
WINDOWS TO BE 30" DEEP. WINDOWS
TO BE LOCATED WITHIN JOIST SPACE.
IF GRADE PERMITS, TOP OF WINDOW TO
BE 6'-10" A.F.F.

PART. PLANS L.O.D. CONDITION

THE UNDERSIGNED HAS REVIEWED AND TAKES RESPONSIBILITY FOR THIS DESIGN AND HAS
THE QUALIFICATIONS AND MEETS THE REQUIREMENTS SET OUT IN THE ONTARIO BUILDING
CODE TO BE A DESIGNER.

REGISTRATION INFORMATION

NAME: Vijay Shivpaul

REGISTRATION INFORMATION

HUNT DESIGN ASSOCIATES INC.

29444

BCIN

19695

HUNT
DESIGN ASSOCIATES INC.

www.huntdesign.ca

ESQUIRE HOMES - 212043
RIVER RUN, AJAX, ONTARIO

Drawn By: HG

Checked By: MN

Scale: 3/16"=1'-0"

'THE DOGWOOD' - UNIT T04
REV.2015.06.22

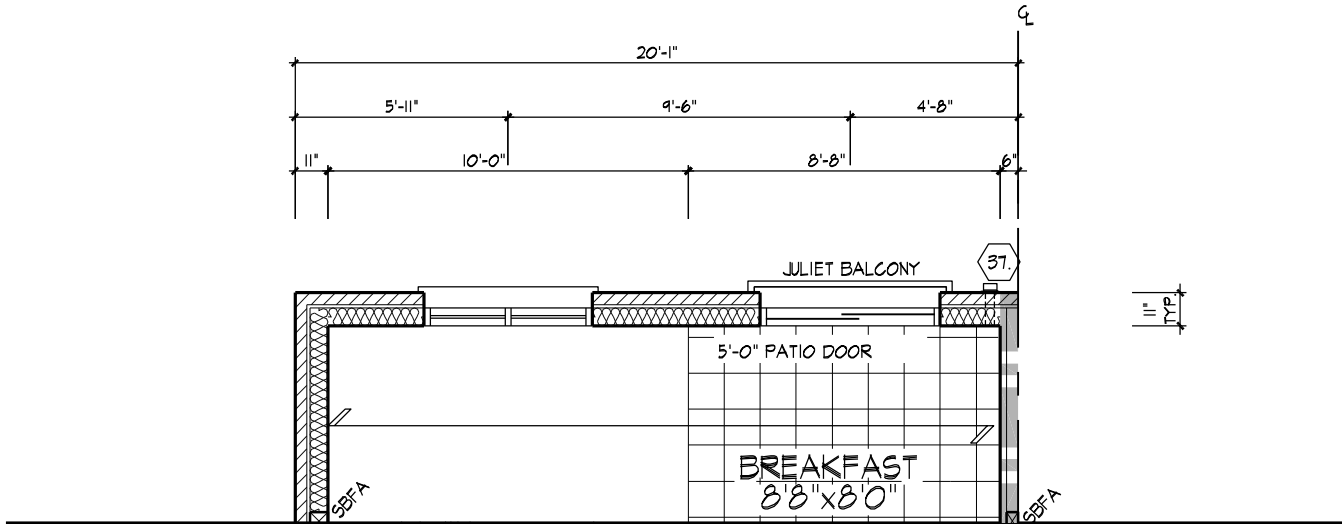
File Number: 212043WT04

Page Number: W1 of W2

8966 Woodbine Avenue // Suite 200 // Markham, ON // L3R 0J7 T 905.737.5133 F 905.737.7326

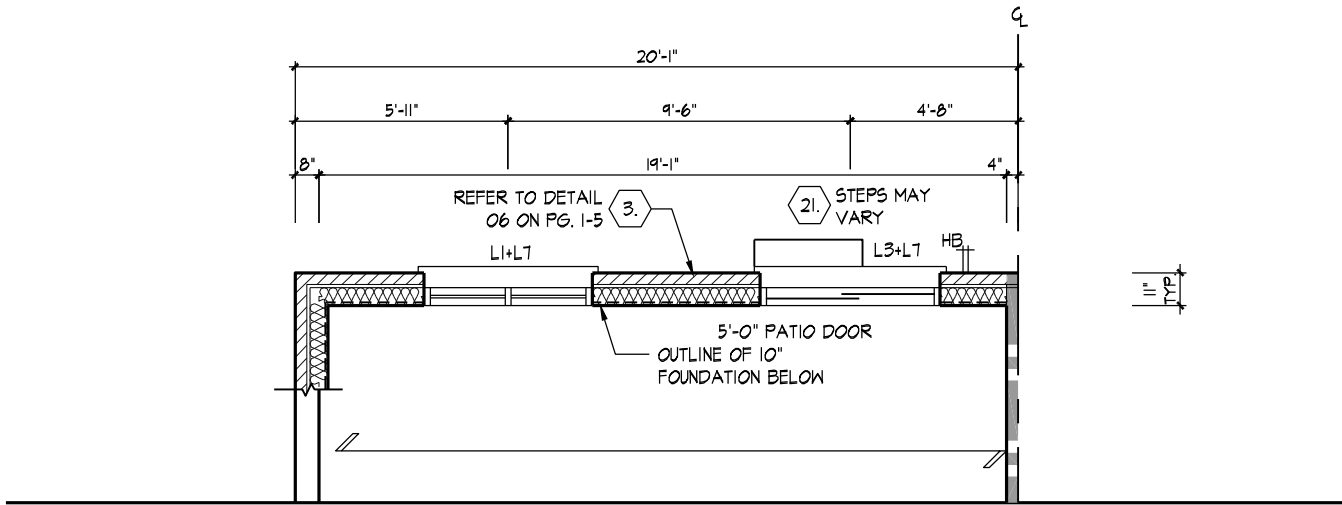
All drawings specifications related documents and design are the copyright property of Hunt Design Associates (H.D.A). Reproduction of this property in whole or in part is strictly prohibited without H.D.A.'s written permission (H.D.A. assumes no responsibility or liability for this property unless it bears the appropriate BCIN number and original signature.)

ROADDERON | TUE MAY 31/16 11:57 AM | K:\PROJECTS\2012\212043\ESQ\WORKING\TOWNS\212043WT04.DWG



PART. GROUND FLOOR PLAN,
ELEV. 'A' - L.O.D. COND.
'A' MOD, 'A' END AND 'B' SIMILAR

NOTE:
REFER TO STANDARD FLOOR
PLANS FOR COMPLETE DIMENSIONS
& STRUCTURAL INFORMATION



PART. BASEMENT PLAN,
ELEV. 'A' - L.O.D. COND.
'A' MOD, 'A' END AND 'B' SIMILAR

NOTE:
REFER TO STANDARD FLOOR
PLANS FOR COMPLETE DIMENSIONS
& STRUCTURAL INFORMATION



PART. REAR ELEVATION 'A', 'B' & 'B-MOD'
'A' UPG. SIMILAR
L.O.D. CONDITION

WINDOW SIZES FOR W.O.B. CONDITIONS:
- W.O.B. = MATCH WIDTH OF WINDOW
ABOVE AND WINDOWS TO BE 48" DEEP.
TOP OF WINDOW TO BE @ 6'-10" A.F.F.
REFER TO FRONT ELEVATION & STANDARD
REAR FOR TYPICAL NOTES & INFO.

PART. PLANS W.O.B. CONDITION

THE UNDERSIGNED HAS REVIEWED AND TAKES RESPONSIBILITY FOR THIS DESIGN AND HAS
THE QUALIFICATIONS AND MEETS THE REQUIREMENTS SET OUT IN THE ONTARIO BUILDING
CODE TO BE A DESIGNER.

NAME: Vijay Shivapaul
SIGNATURE: [Signature]
BCIN: 29444

REGISTRATION INFORMATION: HUNT DESIGN ASSOCIATES INC. 19695

HUNT
DESIGN ASSOCIATES INC.
www.huntdesign.ca

ESQUIRE HOMES - 212043
RIVER RUN, AJAX, ONTARIO

Drawn By: HG
Checked By: MN
Scale: 3/16"=1'-0"

8966 Woodbine Avenue // Suite 200 // Markham, ON // L3R 0J7 T 905.737.5133 F 905.737.7326

THE DOGWOOD' - UNIT T04
REV.2016.04.18

File Number: 212043WT04
Page Number: W2 of W2