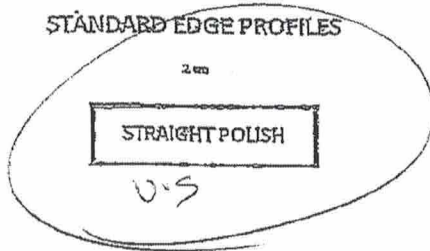
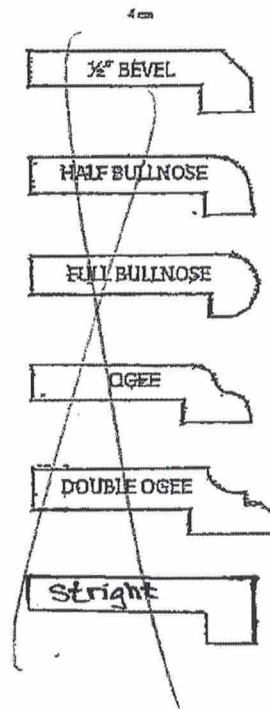


# EDGE PROFILE VERIFICATION FORM

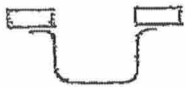
## STANDARD EDGE PROFILES



## UPGRADED EDGE PROFILES



## SINK EDGE



Undermount



Straight Polish Edge

## BACK & SIDE SPLASH TOP EDGE PROFILE



Straight

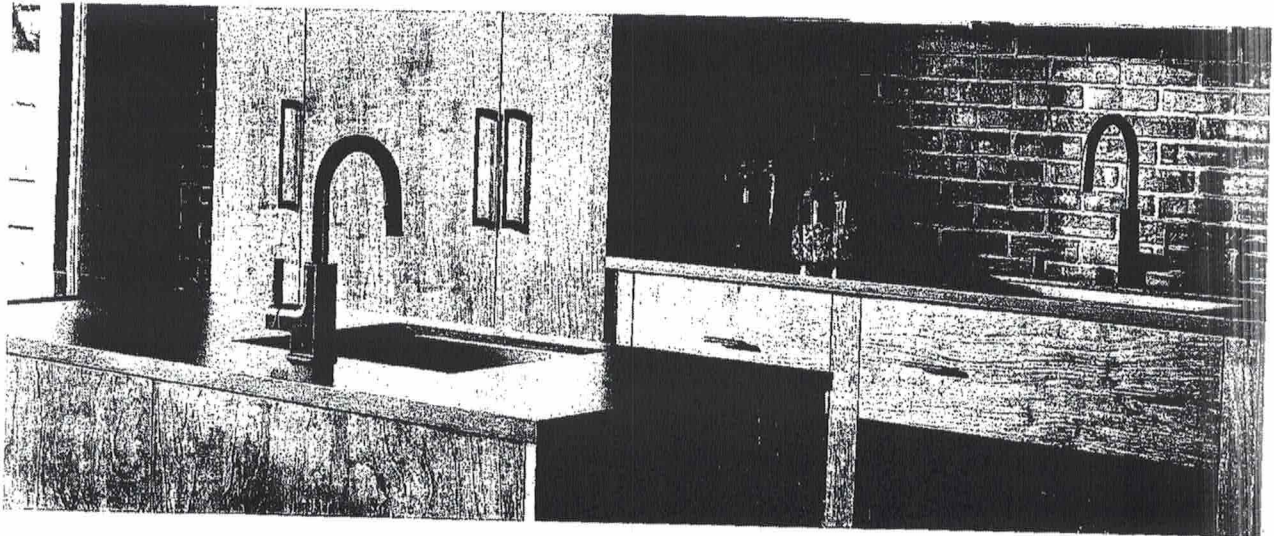
Form 1003

OCT 04 2023

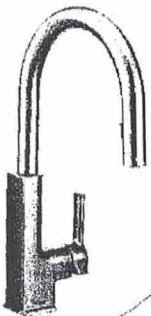
Port Perry  
Lot 63



STO®



FAUCETS



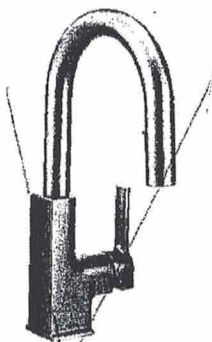
Single Handle Pulldown  
Kitchen Faucet

S72308

Chrome	\$1,187.77
Other	\$1,561.35
Black/Chrome	\$1,795.50

Single hole installation only

Black



Single Handle Pulldown  
Bar/Prep Faucet

S62308

Chrome	\$1,058.56
Other	\$1,370.40
Black/Chrome	\$1,575.97

Single hole installation only

FINISH OPTIONS



Chrome (C), Spot Resist™ Stainless (SRS), Matte Black (BL), Lifeshine® Brushed Gold (BG) Black/Chrome (BLC)

To order, combine the model number with one of these finish letter(s):  
Spot Resist™ Stainless (SRS), Matte Black (BL), Brushed Gold (BG) &  
Matte Black/Chrome (BLC).  
To order Chrome (C) models, use model number only.  
For Chrome MotionSense, order 572308EC

Port Perry  
Lot 63

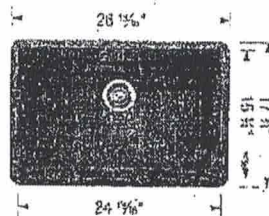
# BLANCO

A-3

## Sink Specifications

Colour	SKU
White	401894
Anthracite	401888
Café	401890
Cinder	401891
Metallic Gray	401892
Truffle	401893
Concrete Gray	402310

## PRECIS U SINGLE 27 SILGRANIT



## Design and planning tips

- Min cabinet size: 30 in ( 760 mm )
- Bowl Depth: 8 5/8 in ( 220.0 mm )

### Specifications:

Mounting clips, Sink template, Installation instructions, 3 1/2" (90 mm) stainless steel strainer(s), Limited Lifetime Warranty

Depending on cabinet construction, a different cabinet size may be required. Consult the cabinet manufacturer.

## Optional Accessories

CapFlow	517666
Mesh Basket	406399
Sink Grid	401804

## Warranty

Limited lifetime warranty on all sinks and faucets. One-year warranty on all accessories and soap dispensers.

## Code/Standards Compliance

BLANCO sinks and faucets are third-party tested and certified to CSA, cUPC, ANSI/ASME, IAPMO and NSF standards and listed by applicable certification bodies. For more information on individual product listings, contact our office or listing organization.



Need support? Learn more by watching our sink & faucet How-to videos:  
<https://www.blanco.com/ca-en/support/how-to-videos/>



BLANCO Canada Inc  
100 Corporation Drive  
Brampton ON L6S 6B5

## Tel & Fax

Tel: 905-494-2400 Toll free: 1-877-425-2626  
Fax: 905-494-2425 Toll free: 1-877-825-2626

While BLANCO strives to provide accurate information, all images and dimensions in this document are intended for reference only and are subject to change at any time without notice. This document is not intended for use as an installation guide. For technical installation details, refer to installation instructions provided with the product. BLANCO assumes no responsibility for the use of superseded or voided specifications.

Port Perry  
Lot 63