

SCHEDULE "D"

Elevation and Floor Plan

LOUISVILLE (30-5) Elev A

See Attached Extra's LOT # 58 L

LOUISVILLE 30-5
ELEVATION A - 1,886 SQ.FT.
ELEVATION B - 1,886 SQ.FT.

BASEMENT FLOOR PLAN
ELEVATION A & B

SECOND FLOOR PLAN
ELEVATION A

OPTIONAL SECOND FLOOR
1 BEDROOM FLOOR PLAN
ELEVATION B

FIRST FLOOR PLAN
ELEVATION A & B

OPTIONAL SECOND FLOOR
4 BEDROOM FLOOR PLAN
ELEVATION A

PARTIAL SECOND FLOOR PLAN
ELEVATION A & B

MASTER BEDROOM ELEVATION A & B

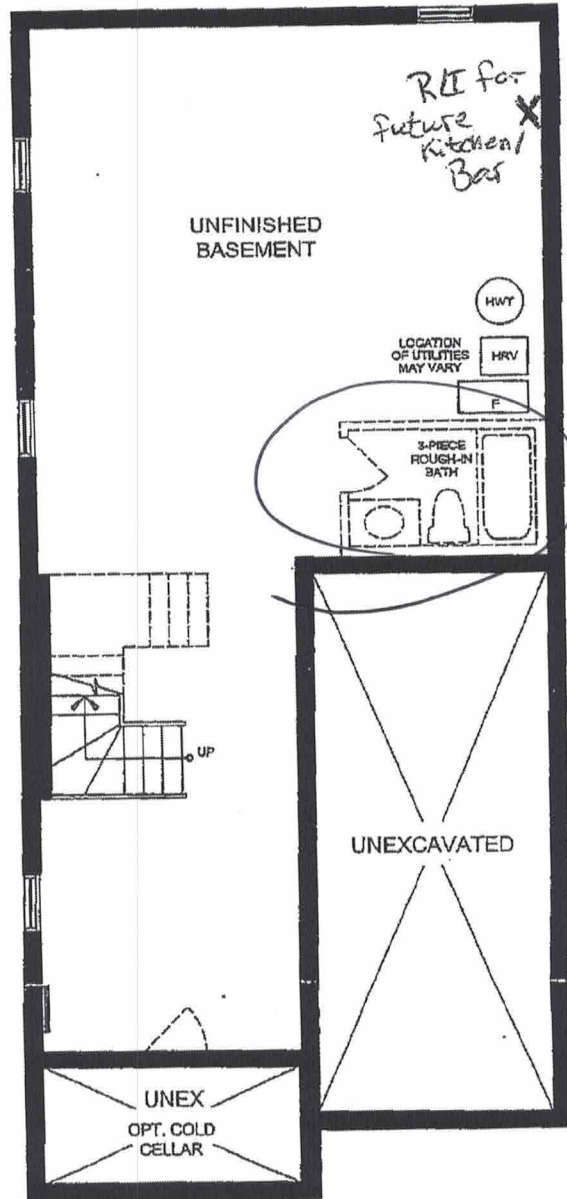
KITCHEN ELEVATION A & B

LIVING ROOM ELEVATION A & B

HERON HILLS
IN 7011 PINE

Notes: Drawings, specifications, materials, and finishes are subject to change without notice. Please contact your sales representative for the most current information. Actual floor area may vary from the stated floor area. All options shown are upgrades. Railings on front porch only where required by O.B.C. E. & O. E. Oct 2014

The floor plans and elevations shown are pre-construction plans and may be revised or improved as necessitated by architectural controls and the construction process. The measurements adhere to the rules and regulations of the TARION Warranty Corporation's official method for the calculation of floor area. Materials, specifications and floor plans are subject to change without notice. All house renderings are artist's concept only. Actual usable floor space may vary from the stated floor area. All options shown are upgrades. Railings on front porch only where required by O.B.C. E. & O. E. Oct 2014



**BASEMENT PLAN
ELEVATION A & B**

SEP 13 2022

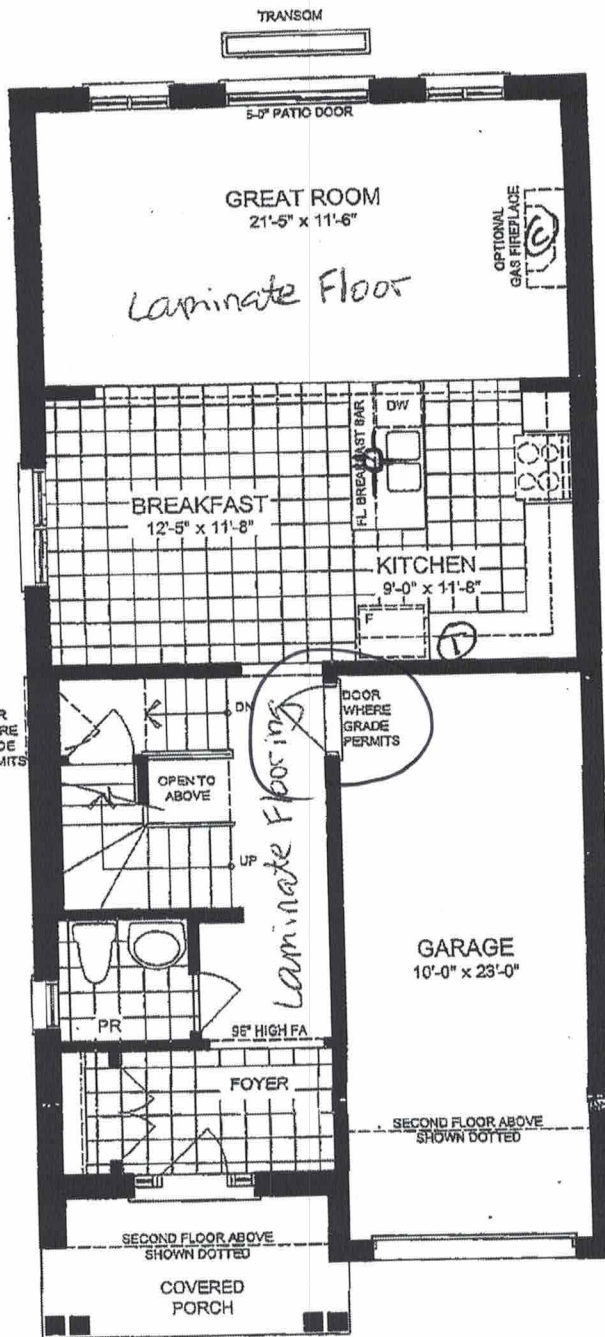
Port Perry
Lot 584 Pnl

JS



Louisville

Smooth Ceilings
main floor

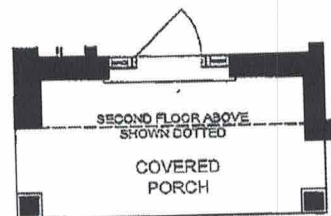


42" Extended Uppers

Fridge upper w/ gables

Oak Stairs
Upg Railing
Unfinish

GROUND FLOOR PLAN
ELEVATION A & B



PARTIAL GROUND FLOOR PLAN
ELEVATION A & B

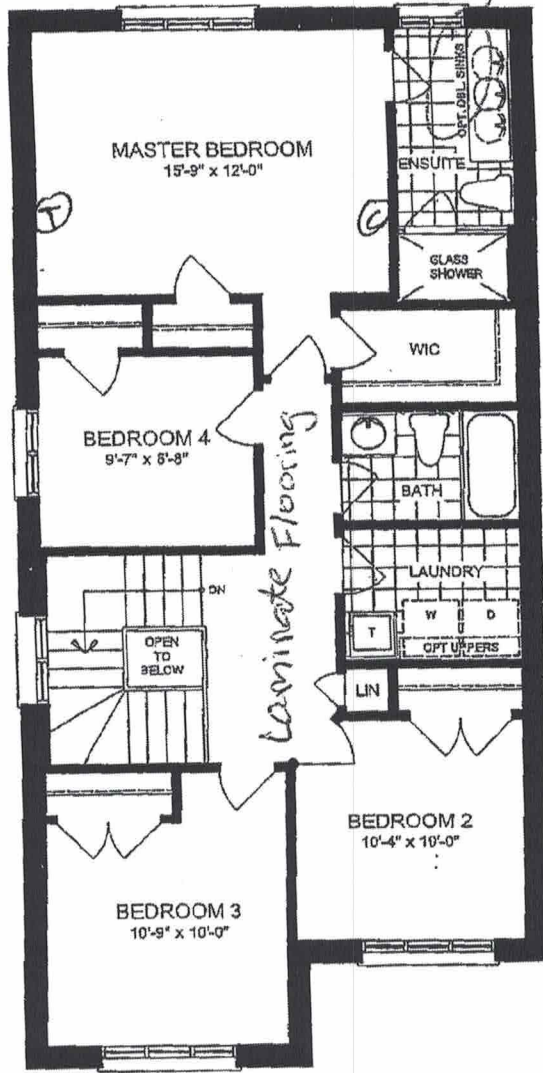
Ⓣ Telephone R/I
 Ⓞ cable R/I
 ⓧ ceiling box

SEP 13 2022

Port Perry
Lot 582 Phil
Subramaniam

J.S.

Louisville
opt 2nd floor



Bank of Drawers
(3)

Frameless glass
Enclosure

OPTIONAL SECOND FLOOR
4 BEDROOM PLAN
ELEVATION A

SEP 13 2022

Port Perry
Lot 582 Phil

JS

