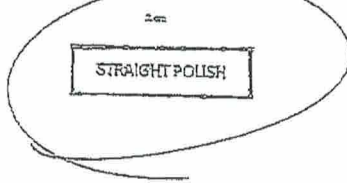
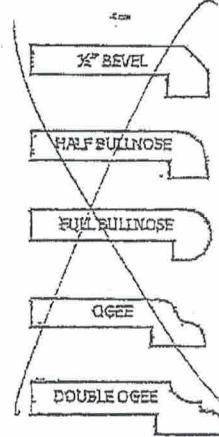


EDGE PROFILE VERIFICATION FORM

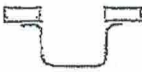
STANDARD EDGE PROFILES



UPGRADED EDGE PROFILES



SINK EDGE



Undermount



Straight Polish Edge

BACK & SIDE SPLASH TOP EDGE PROFILE



Straight

APR 10 2022

Port Perry
Lot 40 Ph1 2
169

LOLAND

21¼" RECTANGULAR DROP-IN SINK

□ 4410BST	Single Hole
□ 4440BST	4" Center
□ 4480BST	8" Center

PRODUCT SPECS

- Fine fireclay
- Front overflow hole
- Single hole, 4" or 8" faucet center
- Template supplied
- Faucet not included

DIMENSIONS

540mm W x 460mm D x 180mm H

21¼" W x 18½" D x 7¼" H

COMPLIANCE CERTIFICATIONS

Meets or exceeds the following:

- IAPMO cUPC
- ASME A112.19.2 / CSA B45.1
- ANSI A117.1 ADA Guideline
- NBC and OBC Section 3.8 barrier free design and CSA B651 Standard

SHIPPING

Cube	1.97
GW	21 lbs



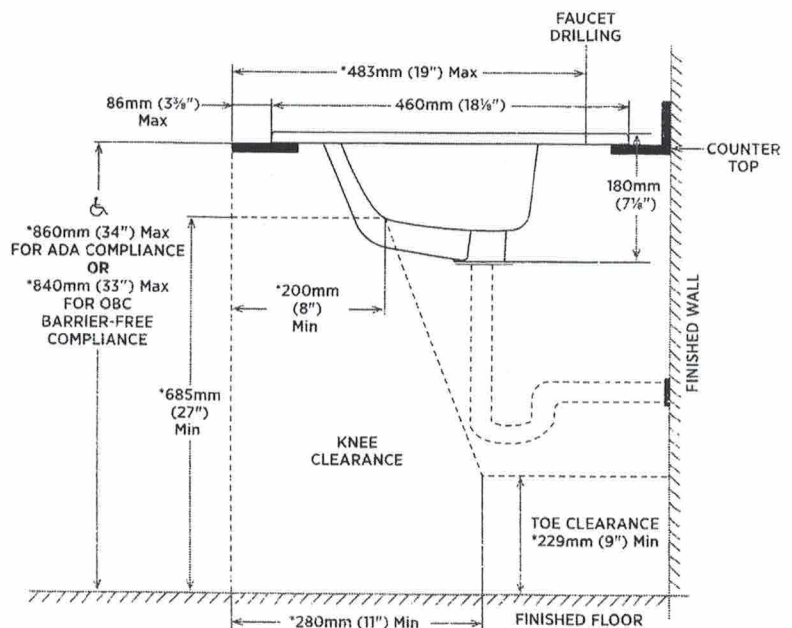
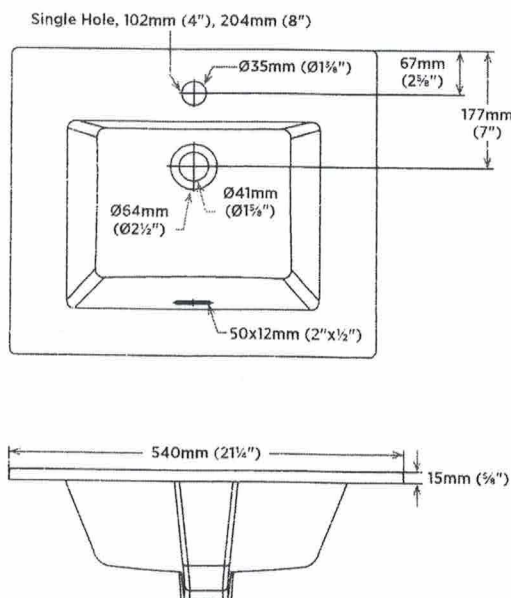
TO BE SPECIFIED

Colour:

- Soft White

NOTES: Dimensions of fixtures are nominal and may vary within the range of tolerances established by ASME standard A112.19.2. These measurements are subject to change or cancellation. No responsibility is assumed for use of superseded or voided pages.

Products are designed to comply ADA/ANSI A117.1 Standard and OBC barrier-free requirements. It shall be the responsibility of the installer to comply with the local disability codes and standards prior to installing the product.



NOTE: * Starred measurements comply with ADA and OBC barrier free accessibility requirements.

contrac

CANADA 5970 CHEDWORTH WAY, UNIT B, MISSISSAUGA, ONTARIO, CANADA L5R 4G5 | CONTRAC.CA
USA 6241 NORTHWIND PARKWAY, HOBART, INDIANA, USA 46342 | CONTRAC.US

REVISED JULY 2019

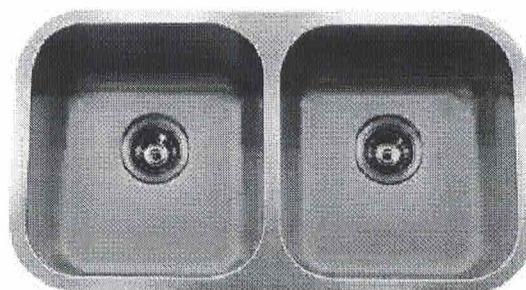
Double Bowl Undermount Kitchen Sink

Product Specifications



PRODUCT FEATURES

- Includes 2 X ML114R Strainers
- 18 Gauge
- Type 304 Stainless Steel
- Undermount
- Includes Mounting Clips
- Fully Undercoated
- Sound Absorption Pads
- Brushed Satin Finish



LOT# 40

MLUD775R

Overall Size: 32 3/8" x 18 1/8"

Bowl Depth: 8"

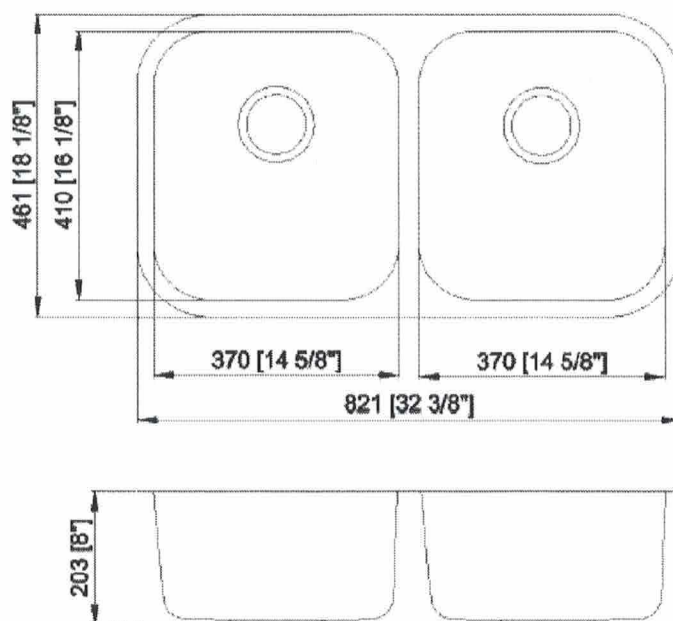
Minimum Cabinet Size: 36"

Drain Opening: 3 1/2"

Use Sink Top Packing as Cut Out Template

Optional Accessories

- Bottom Basin Rack: MLUD775BGR (2-Pack)
- Basket Strainer: MLL7, ML18
- Soap Dispenser: CSD, LCSD, LGLSD



MLUD775R

32" X 18" Undermount Stainless Steel Kitchen Sink
Double Bowl - 9" Deep



Made in Malaysia

For cutout measurement: See cutout template in sink box.

All dimensions listed are nominal. MAINLINE® reserves the right to make product and material changes at any time without notice.



Contact your sales representative for more information or visit our website at mainlinecollection.ca

Revised 03-2021