

**SCHEDULE "D"**

**Elevation and Floor Plan**

**ROSEMOUNT (40-6) Elev B**

See Attached Extras Lot # 18

**ROSEMOUNT 40-6**

**ELEVATION A - 2,801 SQ. FT.**

**ELEVATION B - 2,787 SQ. FT.**

**BASEMENT FLOOR PLAN**  
ELEVATION A

**PARTIAL BASEMENT FLOOR PLAN**  
ELEVATION B

**SECOND FLOOR PLAN**  
ELEVATION A

**PARTIAL SECOND FLOOR PLAN**  
ELEVATION B

**GROUND FLOOR PLAN**  
ELEVATION A

**PARTIAL GROUND FLOOR PLAN**  
ELEVATION B

**HERON HILLS**  
EST. 1981

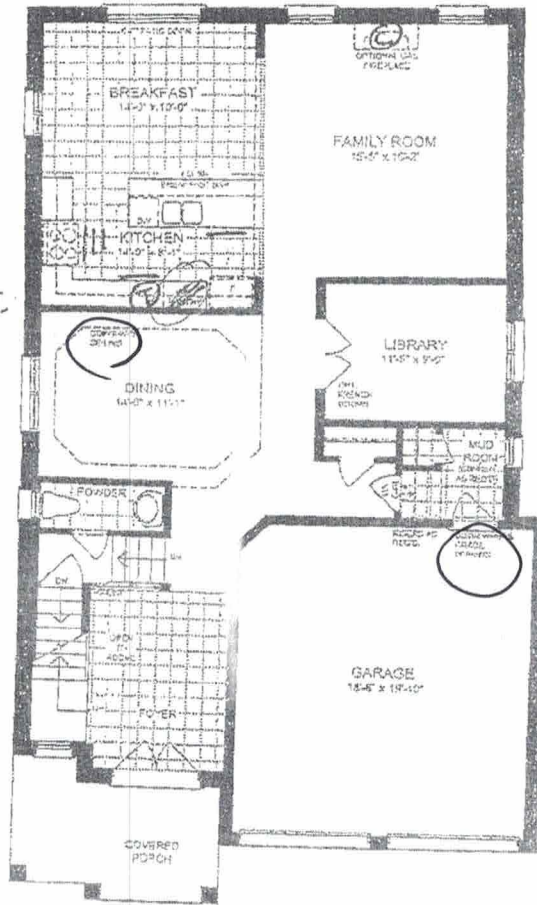
The floor plans and elevations shown are pre-construction plans and may be revised or improved as necessitated by architectural controls and the construction process. The measurements adhere to the rules and regulations of the TARIION Warranty Corporation's official method for the calculation of floor area. Materials, specifications and floor plans are subject to change without notice. All house renderings are artist's concept only. Actual usable floor space may vary from the stated floor area. All options shown are upgrades. Railings on front porch only where required by O.B.C. E. & O. E. Oct 2014

Rosemount

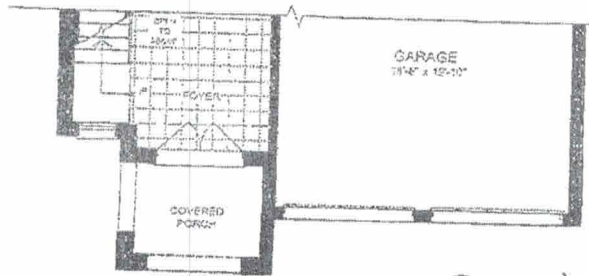
Upg Interior Doors  
Smooth ceilings  
main floor

— top Drawers  
42" Extended Uppers  
cooktop Pots & Pans  
Water-line R/I  
Built-in oven/  
Microwave  
Fridge Upper

upg. Railing



GROUND FLOOR PLAN  
ELEVATION A



PARTIAL GROUND FLOOR PLAN  
ELEVATION B

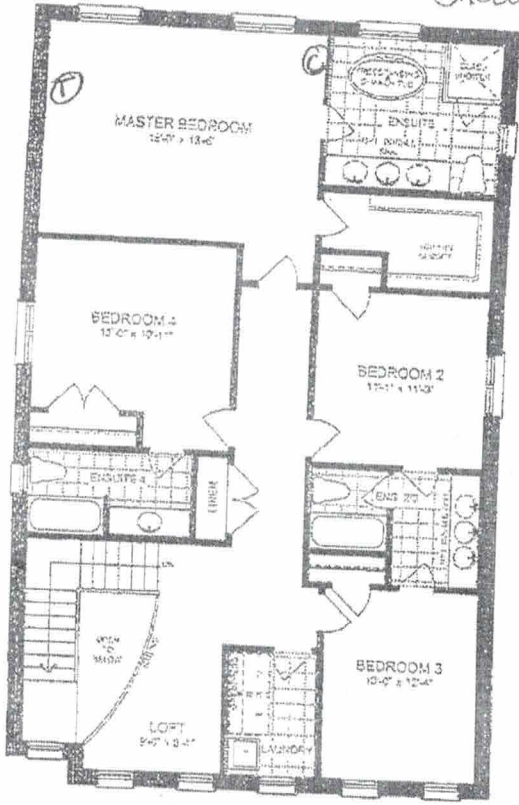
Ⓣ Telephone R/I  
Ⓢ Cable R/I

Port Perry  
Lot 18 Phil  
Mushan  
Yadumakanti

*[Handwritten signature]*

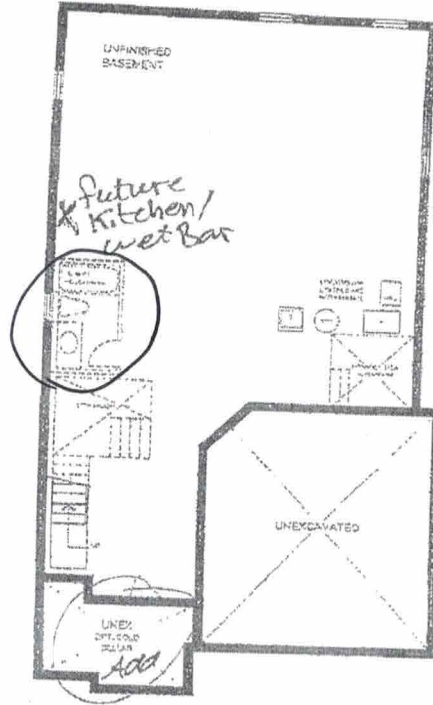
Rosemount

Free standing Tub  
Frameless Glass Shower



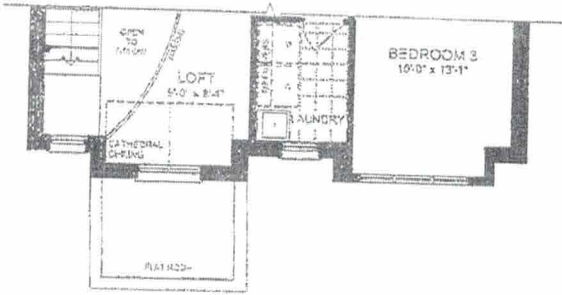
SECOND FLOOR PLAN  
ELEVATION A

200amp

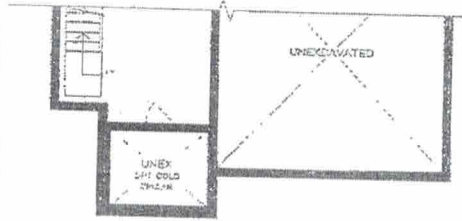


Walkout  
Basement

BASEMENT PLAN  
ELEVATION A



PARTIAL SECOND FLOOR PLAN  
ELEVATION B



PARTIAL BASEMENT PLAN  
ELEVATION B

Port Perry  
Lot