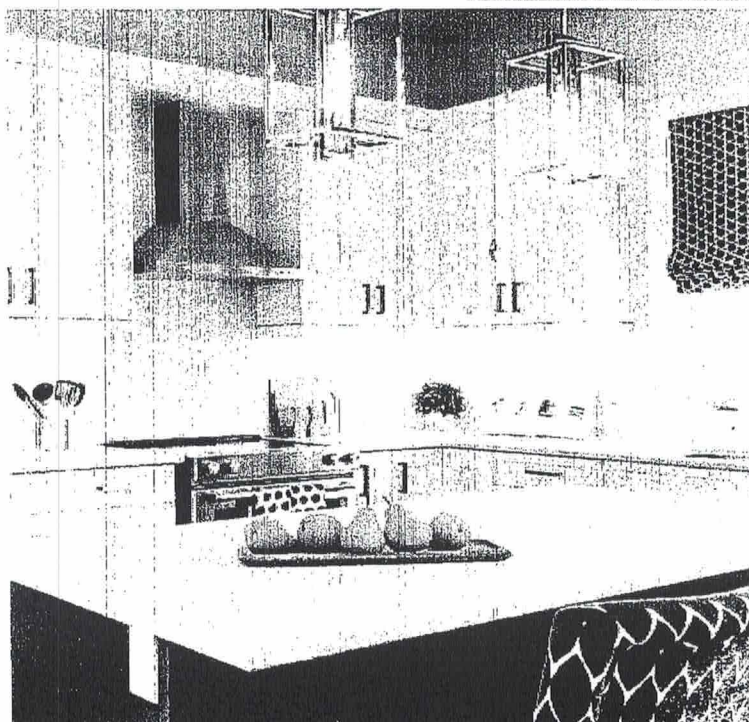


Wall Mount Range Hood

Strong and sturdy with attractive lines and an imposing frame, the SC(B)519 is fitted with a time-delay OFF feature up to nine minutes, a 550 CFM fan, two bright front mounted LED lights and a digital three-speed push button control panel.



Features

- 6" round duct
- 550 CFM centrifugal fan
- Non-stick fan blades
- Available size: 30"/36"
- Available finish: stainless steel

Green Initiatives

Maximize Energy Use: 3 speed fan control panel allows you to manage power while long-lasting LED lights illuminate cooking area.

Minimizing Wasted Energy: Time-delay OFF feature up to nine minutes clears the air after cooking ensuring that the fan is not left running by accident.

Improve Air Quality: Avoid mold and extend the lifespan of your kitchen by efficiently removing moisture, smoke and other airborne contaminants caused by cooking indoors.

Reduce Landfill: High-quality mesh or baffle filters greatly reduce or eliminate the need for periodic replacement filters, reducing landfill.

Avoid Grease Build-up: Utilize grease extraction technology with reusable grease cup.