

EDGE PROFILE VERIFICATION FORM

STANDARD EDGE PROFILES

2 cm

STRAIGHT POLISH

UPGRADED EDGE PROFILES

4 cm

1/2" BEVEL

HALF BULLNOSE

FULL BULLNOSE

OGEE

DOUBLE OGEE

straight

SEP 08 2021

Eastmore  
B1K19 Lot 1



# BLANCO

## Sink Specifications

Colour	SKU
Anthracite	400583
Café	400585
Truffle	401142
Cinder	401396
Metallic Gray	401682
White	401706
Concrete Gray	402263

## Design and planning tips

- Min cabinet size: 915 mm
- Bowl Depth: 9 1/2 in ( 240.0 mm )

### Specifications:

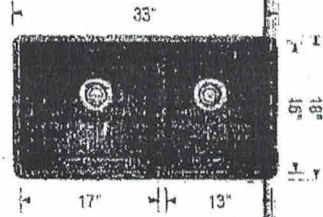
Mounting clips, Sink template, Installation instructions, 3 1/2" (90 mm) stainless steel strainer(s), Limited Lifetime Warranty

Depending on cabinet construction, a different cabinet size may be required. Consult the cabinet manufacturer.

## Optional Accessories

Sink Grid	406482
BLANCOCLEAN	406200
Mechanical Pop-up Strainer	406244
CapFlow	517666
Floating Grid	406536
Sink Grid	406483

## PRECIS U 1 3/4 SILGRANIT



Front Kitchen

## Warranty

Limited lifetime warranty on all sinks and faucets. One-year warranty on all accessories and soap dispensers.

## Code/Standards Compliance

BLANCO sinks and faucets are third-party tested and certified to CSA, cUPC, ANSI/ASME, IAPMO and NSF standards and listed by applicable certification bodies. For more information on individual product listings, contact our office or listing organization.



Need support? Learn more by watching our sink & faucet How-to videos:  
<https://www.blanco.com/ca-en/support/how-to-videos/>



BLANCO Canada Inc  
100 Corporation Drive  
Brampton ON L6S 6B5

### Tel & Fax

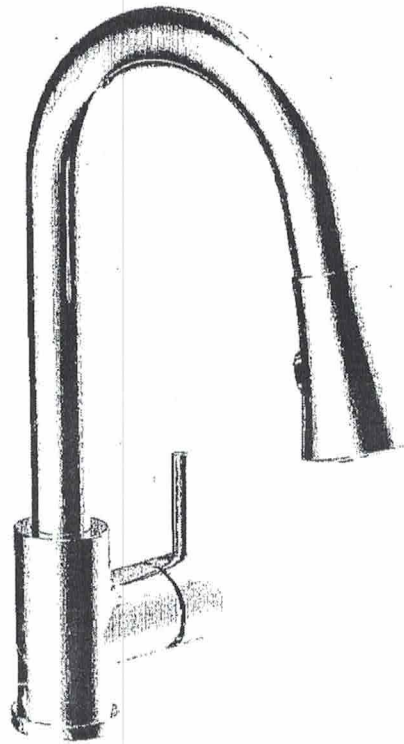
Tel: 905-494-2400 Toll free: 1-877-425-2626  
Fax: 905-494-2425 Toll free: 1-877-825-2626

*While BLANCO strives to provide accurate information, all images and dimensions in this document are intended for reference only and are subject to change at any time without notice. This document is not intended for use as an installation guide. For technical installation details, refer to installation instructions provided with the product. BLANCO assumes no responsibility for the use of superseded or voided specifications.*

Eastmore  
BIK 19 Lot 1

**A** aquabrass

**ΔLT**



40777 – Cantina Kitchen Faucet with  
Pull Down Spray

# Contrac Loland Square

21<sup>1</sup>/<sub>4</sub>"

SQUARE DROP-IN SINK

Single Hole  
4" Center ✓  
8" Center

4440BST

## PRODUCT SPECS

- Fine fireclay
- Front overflow hole
- Single hole, 4" or 8" faucet center
- Template supplied
- Faucet not included

## DIMENSIONS

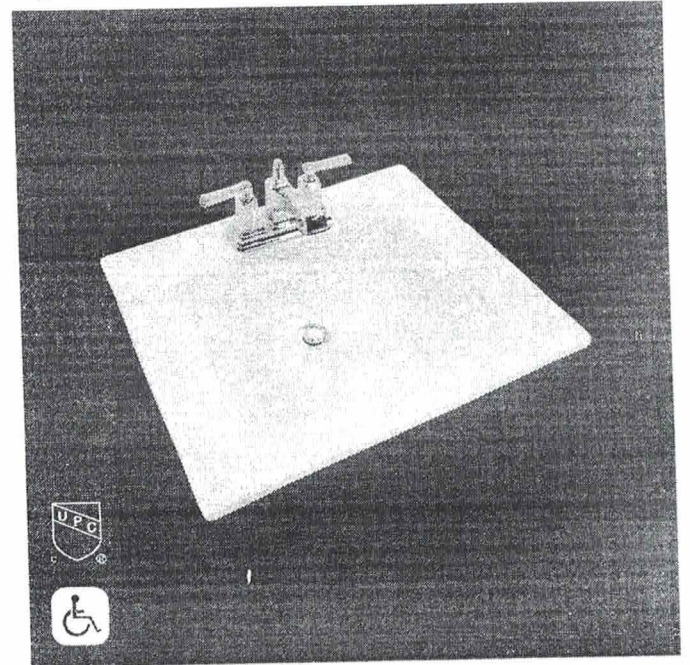
540mm W x 460mm D x 180mm H  
21<sup>1</sup>/<sub>4</sub>" W x 18<sup>1</sup>/<sub>8</sub>" D x 7<sup>1</sup>/<sub>8</sub>" H

## COMPLIANCE CERTIFICATIONS

- Meets or exceeds the following:
- IAPMO cUPC
  - ASME A112.19.2 / CSA B45.1
  - ANSI A117.1 ADA Guideline
  - NBC and OBC Section 3.8 barrier free design and CSA B651 Standard

## SHIPPING

Cube 1.97  
GW 21 lbs



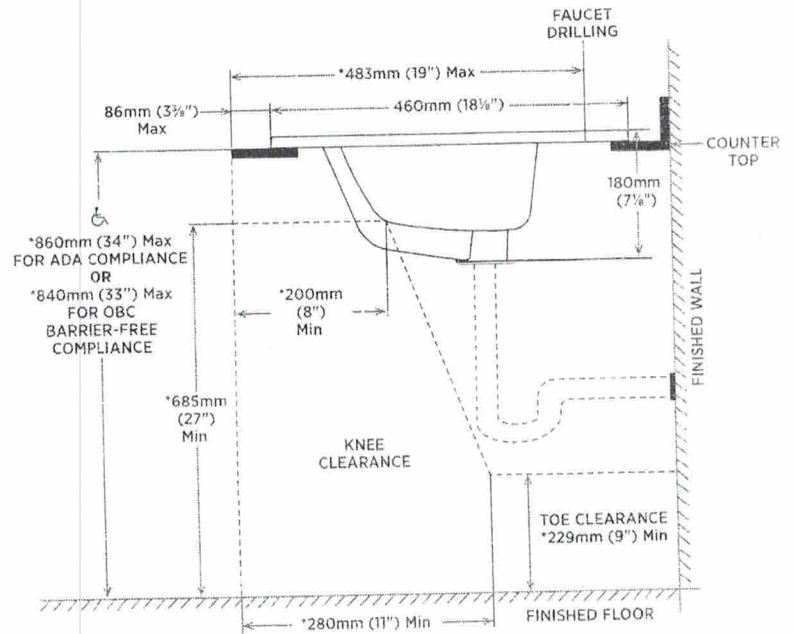
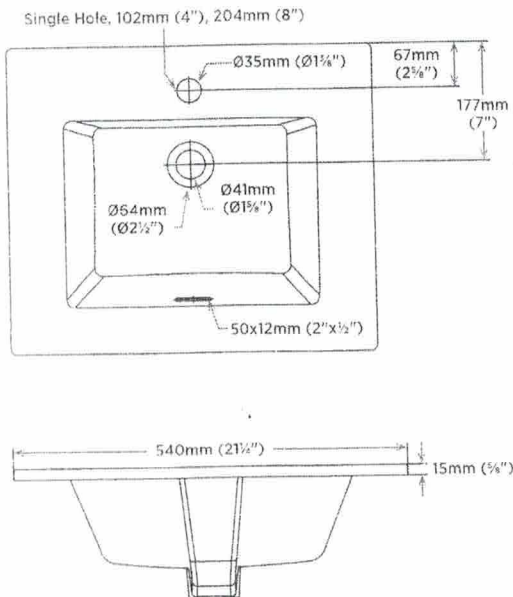
## TO BE SPECIFIED

Colour:

- Soft White

**NOTES:** Dimensions of fixtures are nominal and may vary within the range of tolerances established by ASME standard A112.19.2. These measurements are subject to change or cancellation. No responsibility is assumed for use of superseded or voided pages.

Products are designed to comply ADA/ANSI A117.1 Standard and OBC barrier-free requirements. It shall be the responsibility of the installer to comply with the local disability codes and standards prior to installing this product.



NOTE: \* Stated measurements comply with ADA and OBC barrier free accessibility requirements.

REVISED JULY 2019

**contrac**

CANADA 5970 CHEDWORTH WAY, UNIT B, MISSISSAUGA, ONTARIO, CANADA L5R 4G5 | CONTRAC.CA  
USA 6241 NORTHWIND PARKWAY, HOBART, INDIANA, USA, 46342 | CONTRAC.US



contrac

# CALVI 19 1/4" OVAL UNDERMOUNT SINK

✓ 4220CFY

## Undermount Sink

### Product Specs:

- Vitreous china
- Front overflow hole
- Template and mounting hardware supplied

### Overall Dimensions (W x D x H):

(OD): 490mm(19 1/4") x 410mm(16 1/8") x 195mm(7 5/8")

(ID): 430mm(17") x 350mm(13 3/4") x 145mm(5 3/4")

### Compliance Certifications:

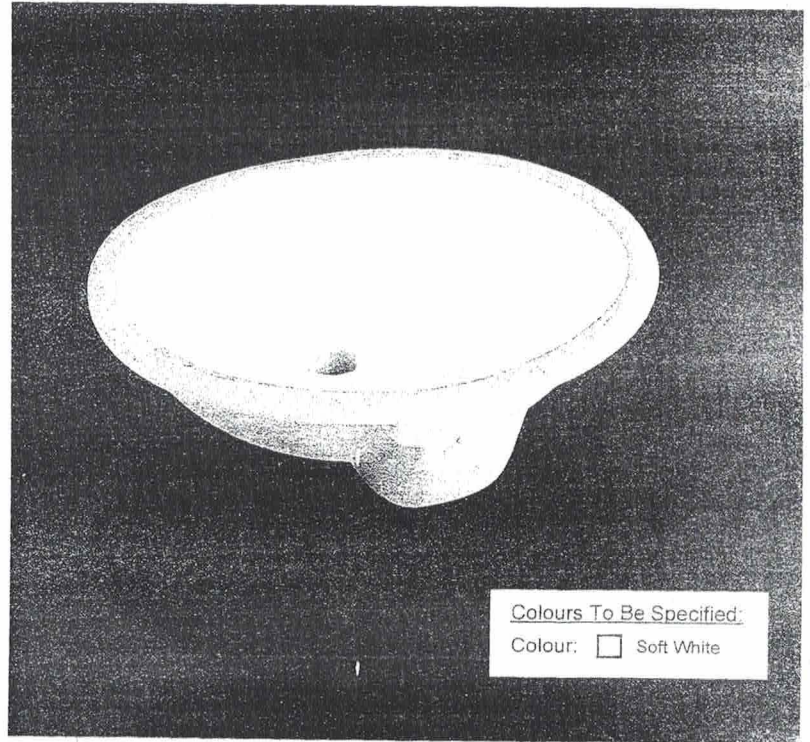
Meets or exceeds the following:

- IAPMO cUPC
- ASME A112.19.2 / CSA B45.1-2008

### Shipping:

Cube 1.53

GW 19 lbs



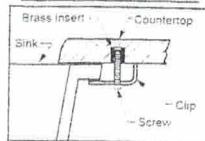
#### Colours To Be Specified:

Colour:  Soft White

#### Notes:

Dimensions of fixtures are nominal and may vary within the range of tolerances established by ANSI standard A112.19.2. These measurements are subject to change or cancellation. No responsibility is assumed for use of superseded or voided pages.

#### Detail of Mounting Clip



**Note:**  
▲ Dimensions shown for location of supplies and "P" trap are suggested.

