

FGMC3066U D/F
MICROWAVE COMBINATION OVEN
30" ELECTRIC

FRIGIDAIRE
GALLERY

FEATURES

Control/Timing System	Express-Select® Controls
Exterior Door Finish	Smudge-Proof® Stainless Steel (F), Smudge-Proof® Black Stainless (D)
Handle Design	Stainless Steel (F), Black Stainless (D)

MICROWAVE FEATURES

Microwave Capacity (Cu. Ft.)	1.6
Watts (IEC-705 Test Procedure)	1100
Window	Large
Interior Light	Yes
Interior Color	White
Turntable Diameter	13.5"
Turntable On / Off	
Control Lock / Clock	Yes/Yes
Touch Pad Buttons / Power Levels	28/11

MICROWAVE CONTROL OPTIONS

Popcorn Button	Yes
Veggies Button (Fresh/Frozen)	2
Potato Button	Yes
Reheat Button	Yes
Auto Melt / Soften Options	4
Auto Reheat Options	3
Auto Cook Options	3
Auto Defrost Options	3
Add-30-Seconds	Yes
Sensor Cooking Options	4
Delay Start / User Preferences	Yes/Yes

OVEN FEATURES

Capacity (Cu. Ft.)	5.1
Oven Window	Large
Oven Lights	2 Halogen
Hidden Bake Element	Yes
Convection System	True Convection
Baking System	Even Baking Technology
Broiling System	Vari-Broil™ (Hi/Low)
Quick Preheat	Yes
Bake / Broil Element (Watts)	2,200 / 4,000
Oven Rack Configuration	1 Extension Glide Rack / 1 Handle Rack
Oven Cleaning System	Self Clean / Steam Clean

OVEN CONTROLS

Control Lock	Yes
Delay Start	Yes
Convection Conversion	Effortless™
Effortless™ Temperature Probe	Yes
Keep Warm / Add-a-Minute	Yes/No

OPTIONAL ACCESSORIES

3"-High Bottom Trim - Stainless Steel (F) / Black Stainless Steel (D)	(F) PN # 5304520627 (D) PN # 5304520624
10'-Long Armored Power Cable	PN # 903056-9010

CERTIFICATIONS

Star-K® Certified (Sabbath Mode)	Yes
----------------------------------	-----

SPECIFICATIONS

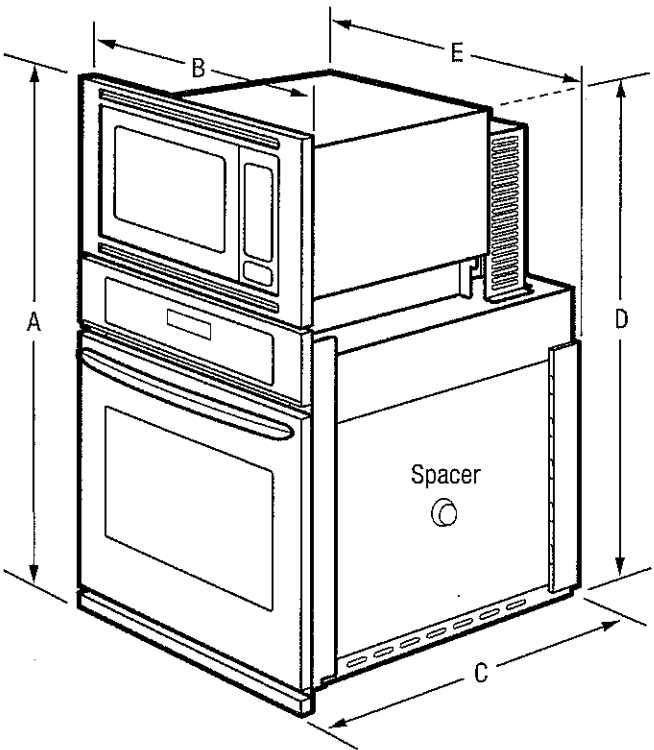
Microwave Oven Interior (H x W x D)	10-1/2" x 17-3/8" x 18-5/8"
Oven Interior (H x W x D)	18-5/8" x 24-1/8" x 19-1/2"
Power Supply Connection Location	Left Bottom Rear
Voltage Rating	240V / 208V / 60Hz
Connected Load (kW Rating) @ 240 / 208 Volts¹	7.9 / 5.9
Amps @ 240 / 208 Volts	30.38 / 35.25
Minimum Circuit Required (Amps)	30
Shipping Weight (Approx.)	300 Lbs.

PRODUCT DIMENSIONS

A - Height (Max.)	41-1/4"
B - Width	30"
C - Depth	24-3/4"
D - Height (Wrapper)	40 4/8"
E - Width (Wrapper)	28-1/4"
Depth with Door Open 90°	45-1/8"

CABINET CUTOOUT DIMENSIONS

Height (Min.) / (Max.)	41-1/8" / 41-1/4"
Width (Min.) / (Max.)	28-1/2" / 29"
Depth (Min.)	23-3/4"



¹Single phase 3- or 4-wire cable, 120 / 240 or 120 / 208 Volt, 60 Hertz AC, only electrical supply with ground required on separate circuit fused on both sides of line.
Note: For planning purposes only. Always consult local and national electric, gas and plumbing codes.
Refer to Product Installation Guide for detailed installation instructions on the web at [frigidaire.com / frigidaire.ca](http://frigidaire.com/frigidaire.ca).
Specifications subject to change. Accessories information available on the web at frigidaire.com / frigidaire.ca.

FRIGIDAIRE

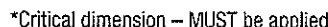
USA • 10200 David Taylor Drive • Charlotte, NC 28262 • 1-800-FRIGIDAIRE • frigidaire.com
CANADA • 5855 Terry Fox Way • Mississauga, ON L5V 3E4 • 1-800-265-9352 • frigidaire.ca

FGMC3066U 02/19
©2019 Electrolux Home Products, Inc.

Lot 43 Phil
Millwood

30" ELECTRIC

GALLERY



****For cutout height greater than 41 1/16", add one 2"-wide wood shim of appropriate height to each side of opening under oven side rails. Lifting oven will hide larger cutout opening at top and oven's 1"-high bottom trim will hide shims at bottom. (Optional 3"-high bottom trim available for cutout height between 42 3/16")**

INSTALLATION SPECIFICATIONS

- To adapt Microwave Combination Oven to fit cutout height greater than 42-3/16", optional 3"-High Bottom Trim available.
- Minimum 24" deep cutout dimension is critical for proper installation, to ensure that oven's faceplate will fit flush against cabinet front.
- Full oven base of solid plywood or similar material required, capable of supporting 225 Lbs.
- Base must be level and cabinet front must be square.
- Microwave Combination Ovens are NOT approved to be used in stackable or side-by-side installation.



USA • 10200 David Taylor Drive • Charlotte, NC 28262 • 1-800-FRIGIDAIRE • frigidaire.com
CANADA • 5855 Terry Fox Way • Mississauga, ON L5V 3E4 • 1-800-265-8352 • frigidaire.ca

Specifications subject to change. Accessories information available on the web at [frigidaire.com / frigidaire.ca](http://frigidaire.com/frigidaire.ca)

EGMC30661J 02/79

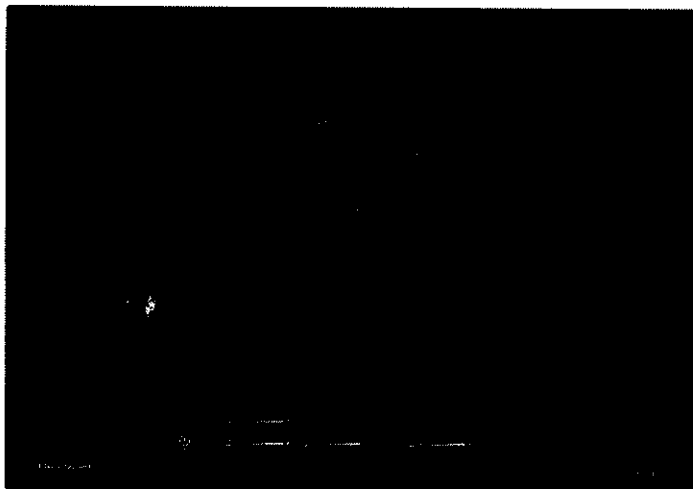
©2019 Electrolux Home Products, Inc.

Lot 43 Phil
Millwood

FRIGIDAIRE GALLERY

FGIC3066TB

BUILT-IN COOKTOP 30" INDUCTION

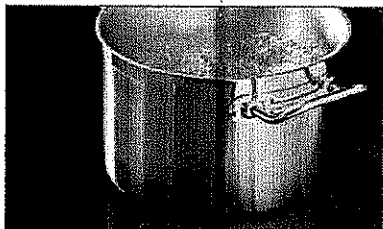


AVAILABLE COLORS



Black

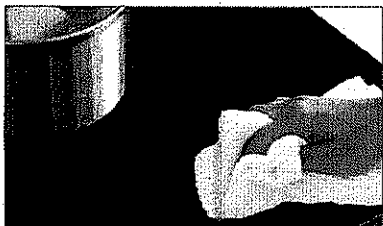
SIGNATURE FEATURES



Amazingly Fast
Get amazingly fast heat with Induction that boils water 50% faster than an electric cooktop!



Even Heat
Whip up delicious meals with induction that delivers incredibly even heat across the surface of the pan so you get golden results every time.



Easy To Clean
Don't stress over spills with induction's easy-to-clean surface that generates heat only to your pan, not your cooktop, meaning spills can't burn onto the surface.



Auto Sizing™ Pan Detection
Make fluffy pancakes with ease using Auto Sizing™ Pan Detection that automatically senses the size of your pan to only send heat to whatever small, medium, or large pan you are using.

PRODUCT DIMENSIONS

Width	30-3/4"
Depth	21-1/2"
Height	4-3/8"

MORE EASY-TO-USE FEATURES

True Temperature Melt & Hold
Get perfectly melted goodness with True Temperature Melt & Hold that delivers low, precise heat for melting delicate ingredients or sauces without scorching or burning for up to one hour.

Temperature Precision
Sear steaks, crisp sandwiches, melt chocolate, or simmer sauces with the precise temperature control of induction.

Safe Surface
The Safe Surface — Induction only heats pans and the food in them; the area around the pans stays cool to the touch.

Energy Efficiency
Since induction only heats your cookware and not your kitchen, less energy is lost throughout the cooking process.

Cooktop Timer
Use the built-in timer function to set a specified amount of time you want items to cook.

Cookware Compatibility
Most stainless steel and cast iron cookware is compatible with induction elements. An easy rule of thumb: if a magnet sticks to the bottom of the cookware, it's induction-friendly.

CERTIFICATIONS

A.D.A.-Compliant
When properly installed, this model is A.D.A.-qualified based on the United States Access Board's A.D.A./A.B.A. Accessibility Guidelines and the Department of Justice's 2010 A.D.A. Standards for Accessible Design.



*10" induction center element, 6 qt./10" diameter All-Clad® pot, 1 qt. tepid water compared to Frigidaire® 9" (3000W) electric right-front element.

ELEMENTS	SIZE	WATTS
Right Front	Induction 7"	1,800/2,600
Center	Induction 10"	2,500/3,800
Left Front	Induction 7"	1,800/2,600
Left Rear	Induction 6"	1,450/2,000

frigidaire.com / frigidaire.ca

Millwood
Lot 43Ph1

FGIC3066TB
BUILT-IN COOKTOP
30" INDUCTION

FRIGIDAIRE
GALLERY

FEATURES

Controls	Glass-Touch
Surface Type	Black Ceramic Glass
Right Front Element (Watts)	7" - 1800/2,600
Center Element (Watts)	10" - 2,500/3,800
Left Front Element (Watts)	7" - 1,800/2,600
Left Rear Element (Watts)	6" - 1,450/2,000
Hot Surface Indicators	Yes
Control Location	Center Front
Knob Color	
Knob Type	

CERTIFICATIONS

A.D.A. Compliant ¹	Yes
-------------------------------	-----

SPECIFICATIONS

Power Supply Connection Location	Right Rear
Voltage Rating	240V/208V/60Hz
Connected Load (kW Rating) @ 240/208 Volts ²	7.2/6.2
Amps @ 240/208 Volts	35.0/35.1
Minimum Circuit Required (Amps)	30
Approved for Electric Single Wall Oven Combination Installation ³	Yes
Shipping Weight (Approx.)	46 Lbs.

¹When properly installed, this model is A.D.A.-qualified based on the United States Access Board's A.D.A./A.B.A. Accessibility Guidelines and the Department of Justice's 2010 A.D.A. Standards for Accessible Design.

²Single phase 3- or 4-wire cable 120/240 or 120/208 Volt, 60 Hertz AC only electrical supply with ground required on separate circuit fused on both sides of line.

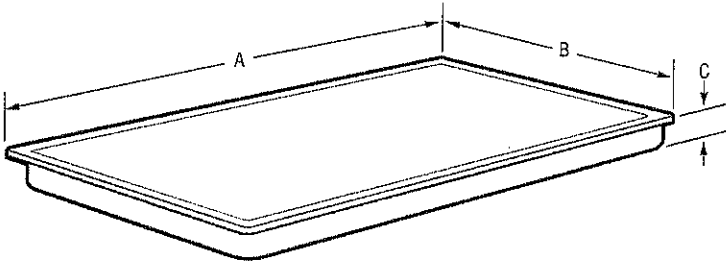
³Cooktops are approved for installation above any of our Electric Single Wall Ovens.

PRODUCT DIMENSIONS

A - Width	30-3/4"
B - Depth	21-1/2"
C - Height	4-3/8"

CUTOUT DIMENSIONS

Width (Min.-Max.)	28-1/2"-29-7/8"
Depth (Min.-Max.)	19-5/8"-20-1/2"
Height	4-1/2"



Note: For planning purposes only. Always consult local and national electric, gas and plumbing codes. Refer to Product Installation Guide for detailed installation instructions on the web at frigidaire.com / frigidaire.ca. Specifications subject to change. Accessories information available on the web at frigidaire.com / frigidaire.ca.

FRIGIDAIRE

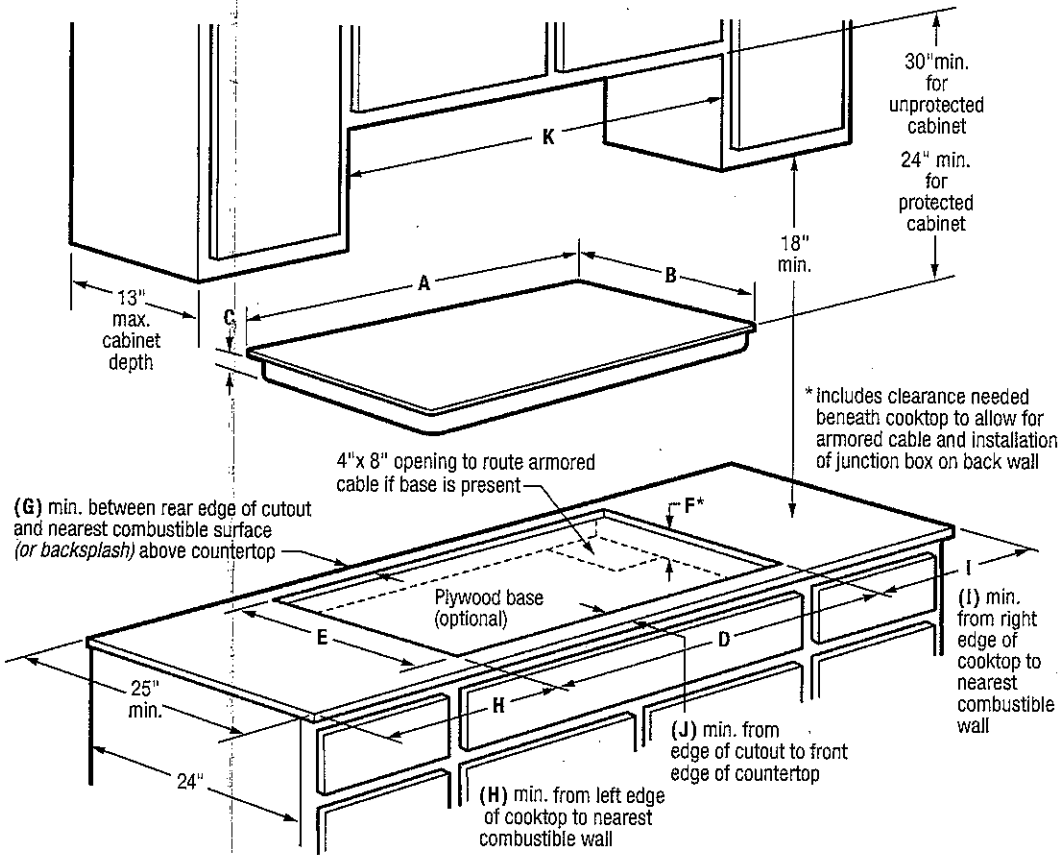
USA • 10200 David Taylor Drive • Charlotte, NC 28262 • 1-800-FRIGIDAIRE • frigidaire.com
CANADA • 5855 Terry Fox Way • Mississauga, ON L5V 3E4 • 1-800-265-8352 • frigidaire.ca

FGIC3066T 02/18
©2017 Electrolux Home Products, Inc.

Millwood
Lot 43PH1

FGIC3066TB
BUILT-IN COOKTOP
30" INDUCTION

FRIGIDAIRE
GALLERY



PRODUCT DIMENSIONS	
A-Width	30-3/4"
B-Depth	21-1/2"
C-Height	4-3/8"
CUTOUT DIMENSIONS	
D-Width (Min.)	28-1/2"
	(Max.) 29-7/8"
E-Depth (Min.)	19-5/8"
	(Max.) 20-1/2"
F-Height (Min.)*	4-1/2"
REQUIRED CLEARANCES	
G-(Min.)	1-1/2"
H-(Min.)	2"
I-(Min.)	2"
J-(Min.)	2-1/2"
K-Cabinet Opening Width (Min.)	30"
UTILITY CONNECTION LOCATIONS	
Power Supply	Right Rear

INSTALLATION SPECIFICATIONS

- Product Shipping Weight (approx.) - 46 Lbs.
- Single phase 3- or 4-wire cable, 120/240 or 120/208 Volt, 60 Hertz AC only electrical supply with ground required on separate circuit fused on both sides of line.
- Connected Load (kW Rating) @ 240/208 Volts = 7.2/6.2 kW
- Amps @ 240/208 Volts = 35.0/35.1 Amps
- Recommended Circuit Breaker - 30 Amps
- Always consult local and national electric codes.
- Cooktop cutout height includes clearance needed beneath cooktop to allow for armored cable and installation of junction box on back wall. Position center of junction box 10" inward from right side of cooktop cutout, and 12" down from underside of countertop.
- Overhead cabinetry should not exceed a 13" maximum depth.
- Absolute minimum horizontal distance between overhead cabinets installed to either side of appliance must be no less than 30".
- Allow 30" minimum clearance between top of cooktop platform and bottom of unprotected wood or metal overhead cabinet; or 24" minimum clearance when bottom of wood or metal overhead cabinet is protected by not less than 1/8" flame-retardant millboard covered with not less than No. 28 MGS sheet steel, 0.015" stainless steel, 0.024" aluminum or 0.020" copper.
- Allow 1-1/2" minimum clearance between rear edge of cutout and nearest combustible surface (or backsplash) above countertop.
- Allow 2" minimum required clearance from left edge of cooktop to nearest combustible wall and 2" minimum from right edge of cooktop to nearest combustible wall.
- Installation of drawer not recommended beneath cooktop.
- To reduce risk of fire when using overhead cabinetry, install range hood that projects horizontally a recommended minimum of 5" beyond bottom of cabinets.
- Induction Built-In Cooktop model FGIC3066T is approved to be used over any Frigidaire® Electric Single Wall Oven. (Refer to Electric Cooktop Installation Over 30"/27" Electric Single Wall Oven Specifications page on web.)

OPTIONAL ACCESSORIES

- Granite Countertop Installation Kit - (PN # 903061-9010).



FRIGIDAIRE
USA • 10200 David Taylor Drive • Charlotte, NC 28262 • 1-800-FRIGIDAIRE • frigidaire.com
CANADA • 5855 Terry Fox Way • Mississauga, ON L5V 3E4 • 1-800-265-8352 • frigidaire.ca

Note: For planning purposes only. Always consult local and national electric, gas and plumbing codes. Refer to Product Installation Guide for detailed installation instructions on the web at frigidaire.com / frigidaire.ca. Specifications subject to change. Accessories information available on the web at frigidaire.com / frigidaire.ca

FGIC3066T 02/18
©2017 Electrolux Home Products, Inc.

Millwood
Lot 43 Phil