

LOT 10

A.C C.C

Installation requirements

Pre-installation checklist

1. When preparing cooktop opening, make sure the inside of the cabinet, and the cooktop do not interfere with each other.
2. Remove packing materials, grate boxes, regulator with literature, and literature package from the cooktop before beginning installation.

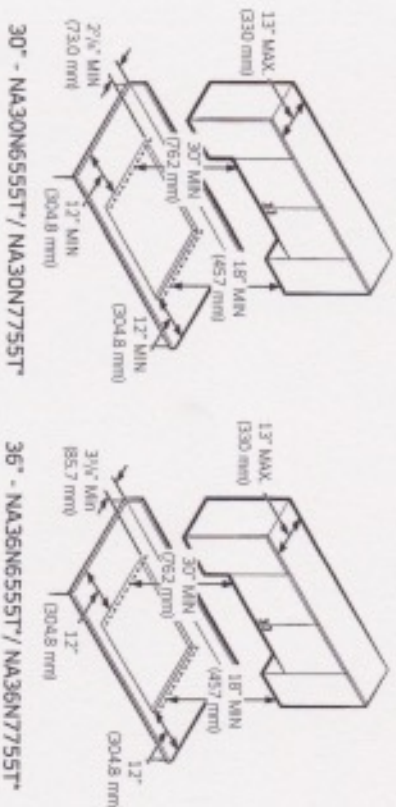
Location requirements

BEFORE YOU BEGIN to install this appliance, refer to the following information, dimensions, and clearances. These dimensions must be met for safe use of the cooktop. The location of the electrical outlet and gas piping may be adjusted to meet the following dimensions and clearances.

CAUTION

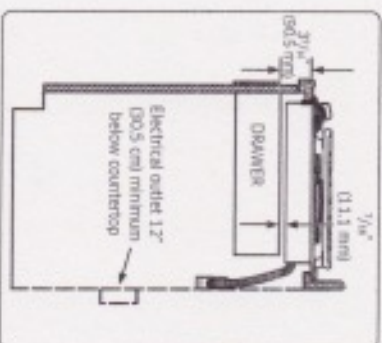
This cooktop has been designed to comply with the maximum allowable wood cabinet temperature of 194 °F (90 °C). Make sure the wall covering, countertops, and cabinets around the cooktop can withstand the heat (up to 194 °F (90 °C)) generated by the cooktop, if not, discoloration, delamination, or melting may occur.

Maintain the following minimum clearance dimensions



NOTE

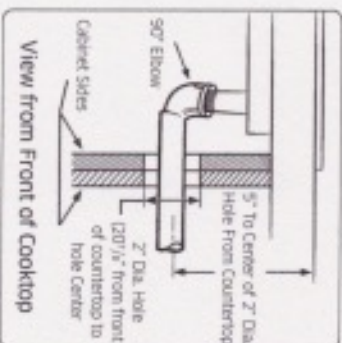
All horizontal clearances must be maintained for a minimum of 18" (457 mm) above the cooking surface.



NOTE

Allow 7/16" minimum vertical clearance from the cooktop bottom (or 39/64") minimum depth from the countertop) to any combustible surfaces, including the upper edge or a drawer installed below the cooktop.

Installation over built-in oven



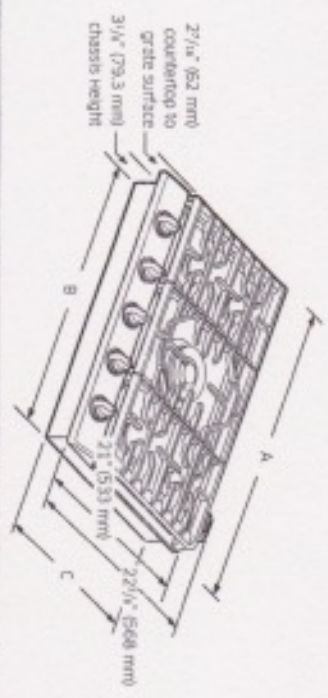
See built-in oven installation for complete installation instructions.

Installation requirements

Lot #10

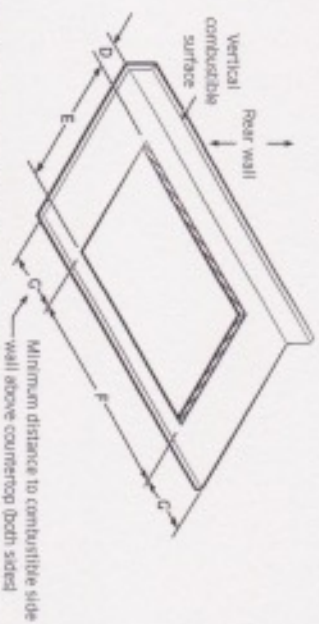
Ac e.c

Overall cooktop dimensions



Model	A	B	C
NA30N6555T*	30"	28 1/8"	19 1/8"
NA30N7755T*	(762 mm)	(715 mm)	(492.1 mm)
NA36N6555T*	36"	33 11/16"	18 1/8"
NA36N7755T*	(914.4 mm)	(855 mm)	(479 mm)

Cutout dimensions of countertop

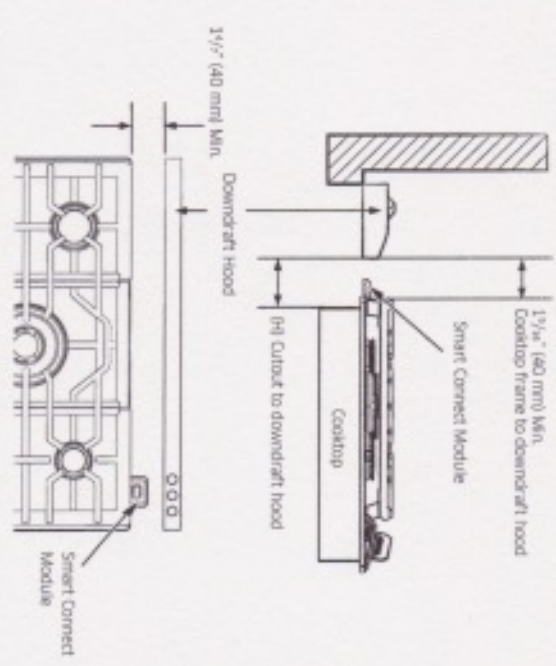


Model	(D) Min.	(E) Min.	(F) Min.	(G) Min.
NA30N6555T*	2 7/8"	1 9/8"	28 1/2"	1 2"
NA30N7755T*	(73 mm)	(498.5 mm)	(723.9 mm)	(304.8 mm)
NA36N6555T*	3 3/8"	1 9 1/8"	33 7/8"	1 2"
NA36N7755T*	(85.7 mm)	(485.8 mm)	(860.4 mm)	(304.8 mm)

Installation dimensions with downdraft hood

NOTE

- Make sure the clearance dimensions when you install the cooktop with downdraft hood.
- The cooktop can be installed after detaching Smart Connect module. Please refer to the instruction how to detach Smart Connect module on page 15.



Model	(H) Min.
NA30N6555T*	27 1/8" (692 mm)
NA30N7755T*	
NA36N6555T*	3" (76 mm)
NA36N7755T*	

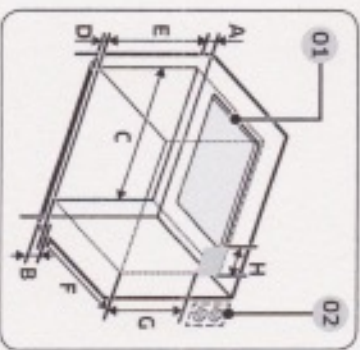
Installation requirements

Lot # 10

A.C. C.C

Installation requirements

Single Oven Under counter

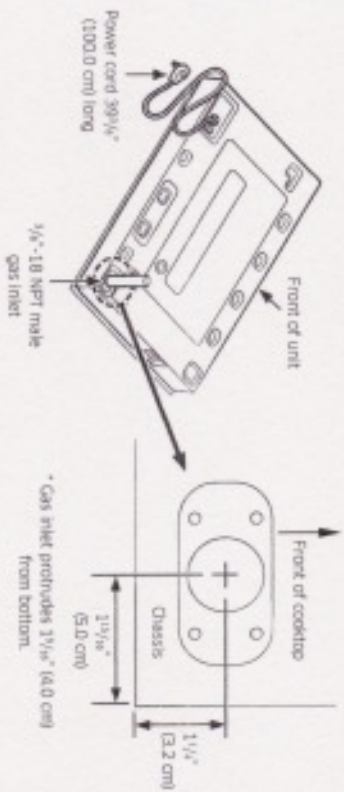


- 01 This cooktop can be installed above any Samsung single built-in oven. Refer to installation manual of oven.
- 02 Gas and Electrical Connections for Gas Cooktop Must be Located in an Adjacent Accessible Location to the Right.

	Size
A	Min. 39 1/4" (9.5 cm)
B	4" (10.1 cm)
C	Min. 28 1/2" / Max. 28 5/8" (Min. 72.4 cm / Max. 72.7 cm)
D	Min. 17" / Max. 17 1/4" (Min. 2.5 cm / Max. 3.2 cm)
E	Min. 27 1/4" / Max. 27 3/8" (Min. 69.2 cm / Max. 69.5 cm)
F	24" (61 cm)
G	Min. 22" (Min 55.9 cm)
H	Max. 9 1/2" (Max. 24.1 cm) - Junction Box

Installation requirements

Utility locations and dimensions



Gas supply requirements

Provide adequate gas supply

This cooktop is designed to operate at a pressure of 5 in (13 cm) of water column on natural gas or 10 in (25 cm) of water column on LP gas (propane or butane). Make sure you are supplying your cooktop with the type of gas for which it is designed. Do not attempt to convert the appliance from the gas specified in this manual to a different gas without consulting the gas supplier.

This cooktop is convertible for use on natural or propane gas. If you decide to use this cooktop on LP gas, conversion must be made by a qualified LP installer before attempting to operate the cooktop.

For proper operation, the pressure of natural gas supplied to the regulator must be between 5 in and 13 in (13 cm and 33 cm) of water column.

For LP gas, the pressure supplied must be between 10 in and 13 in (25 cm and 33 cm) of water column.

When checking for proper operation of the regulator, the inlet pressure must be at least 1 in (2.5 cm) greater than the operating (manifold) pressure as given.

Product dimensions - Combi. ovens

-
- A technical drawing of a stepped block. The block has a rectangular base with a smaller rectangular section on top. The dimensions are labeled as follows: A is the width of the top section, B is the width of the base, C is the depth of the base, D is the depth of the top section, E is the height of the base, and F is the height of the top section.

- | DIMENSION | |
|-----------|--------------------|
| A | 43 1/4" (109.9 cm) |
| B | 28 1/2" (72.4 cm) |
- Overall height
- Recessed outlets
-
- The drawing shows a square table with a recessed top. Dimension A is the width of the table, and dimension B is the depth. Labels D and E point to the legs of the table.

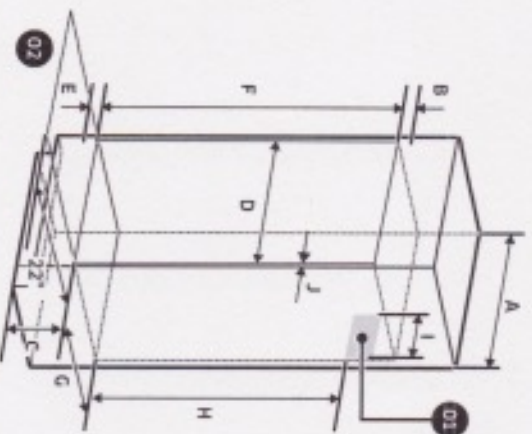
10

Preparation

Cabinet dimensions - Combi. ovens

Combi Ovens Installed in Cabinet

- 01 Junction Box
- 02 Allow a minimum of 22" for clearance to adjacent corners, drawers, walls, etc. when door is open



Cabinet	DIMENSION
A	30" (76.2 cm)
B	Min. 17 1/8" (3.0 cm)
C	12" (30.5 cm)
D	Min. 28 1/2" / Max. 28 5/8" (Min. 72.4 cm / Max. 72.7 cm)
E	Min. 1" / Max. 1 1/4" (Min. 2.5 cm / Max. 3.2 cm)
F	42 1/4" (107.2 cm)

6 English

Cabinet	DIMENSION
G	Min. 23 1/2" (Min. 59.7 cm)
H	Min. 30 1/2" (Min. 755 mm)
I	Max. 9 1/2" (Max. 24.1 cm) - Junction Box
J	Min. 11 1/8" (1.75 cm) - Wooden cabinet thickness

If codes permit and a separate ground wire is used, it is recommended that a qualified electrical installer determine that the ground path and the wire gauge are in accordance with local codes.

Check with a qualified electrical installer if you are not sure the oven is properly grounded.

This oven must be connected to a grounded-metal permanent wiring system.

Be sure that the electrical connection and wire size are adequate and in conformance with the National Electrical Code, ANSI/NFPA 70-latest edition or CSA Standards C22.

1-94, Canadian Electrical Code, Part 1 and C22.2 No. 0-M91-latest edition, and all local codes and ordinances.

A copy of the above code standards can be obtained from:

National Fire Protection Association
1 Batterymarch Park
Quincy, MA 02169-7471

CSA International
8501 East Pleasant Valley Road
Cleveland, OH 44131-5575

A.C. lot #10.
C.C.