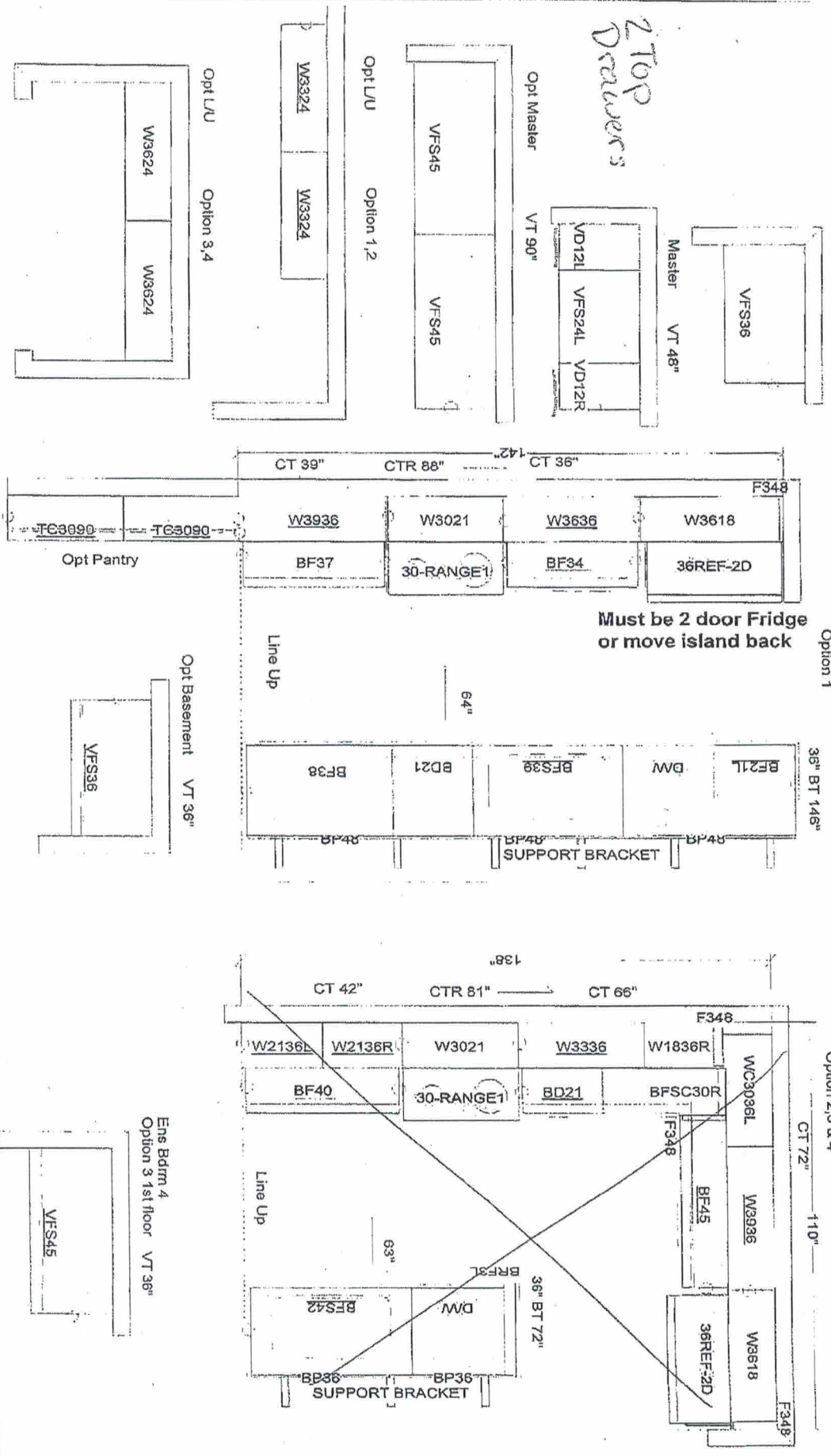


Builder: Delpark Homes
 Project: The Ross
 Location: Oshawa, ON.
 Type: T3 Interior Doncaster 3

OVERALL HANG HEIGHT @ 90" AFF
 O = finished end

All Bathrooms
 Opt 1,2,3,4
 Main VT 36"



Lot 43 Bldg I

All dimensions, size designations given are subject to verification on job site and adjustment to fit job conditions.

2020 TECHNOLOGIES

This is an original design and must not be released or copied unless applicable fee has been paid or job order placed.

Designed: 4/26/19
 Printed: 5/02/19

T3 Interior (36) kit

All

Drawing #: 1

No Scale.

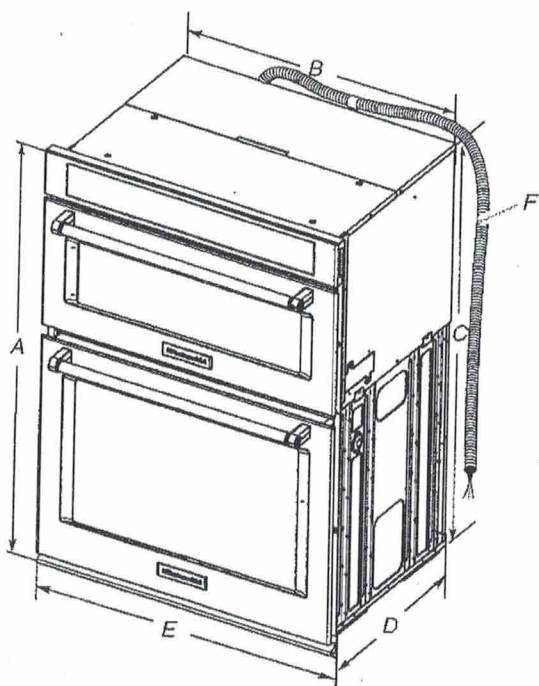
1. Taller upper
2. Cabinet above cook top to accommodate a further 36" hood fan
3. Counter top no backsplash
4. Pot & Pan under cook top
5. Fridge upper legible
6. Tall oven built in cabinet (taller height)
7. Pot drawer below tall cabinet

- Electrical supply junction box should be located 3" (7.6 cm) maximum below the support surface when the oven is installed in a wall cabinet. A 1" (2.5 cm) minimum diameter hole should have been drilled in the left rear corner of the support surface to pass the appliance cable through to the junction box.
- Oven support surface must be solid, level and flush with bottom of cabinet cutout. Floor must be able to support a total weight (microwave and built-in oven) of 208 lbs (95 kg) for 27" (68.6 cm) models or 249 lbs (113 kg) for 30" (76.2 cm) models.

IMPORTANT: To avoid damage to your cabinets, check with your builder or cabinet supplier to make sure that the materials used will not discolor, delaminate or sustain other damage. This oven has been designed in accordance with the requirements of UL and CSA International and complies with the maximum allowable wood cabinet temperatures of 194°F (90°C).

Product Dimensions

27" and 30" (68.6 cm and 76.2 cm) Ovens

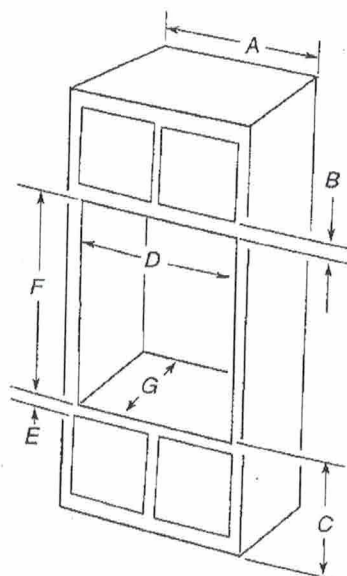


~~27" (68.6 cm) models~~
A. 42 3/8" (108.0 cm) overall height
B. 25 7/8" (64.6 cm) recessed width
C. 41" (104.1 cm) recessed height
D. 23 1/4" (59.1 cm) max. recessed depth
E. 27" (68.6 cm) overall width
F. 46" (121.9 cm) flexible conduit length measured from the conduit clamp located at the rear of the oven. Do not remove the conduit clamp.

~~30" (76.2 cm) models~~
A. 42 3/8" (108.0 cm) overall height
B. 28 7/8" (72.2 cm) recessed width
C. 41" (104.1 cm) recessed height
D. 23 1/4" (59.1 cm) max. recessed depth
E. 30" (76.2 cm) overall width
F. 48" (121.9 cm) flexible conduit length measured from the conduit clamp located at the rear of the oven. Do not remove the conduit clamp.

Cabinet Dimensions

27" and 30" (68.6 cm and 76.2 cm) Ovens



~~27" (68.6 cm) models~~

~~A. 27" (68.6 cm) min. cabinet width
B. 1" (2.5 cm) top of cutout to bottom of upper cabinet door
C. 19 1/4" (48.9 cm) bottom of cutout to floor is recommended.
4" - 19 1/4" (10.2 - 48.9 cm) bottom of cutout to floor is acceptable.
D. 25 1/2" (64.8 cm) cutout width
E. 1 1/2" (3.8 cm) min. bottom of cutout to top of cabinet door
F. 41 3/8" (105 cm)* recommended cutout height
G. 24" (60.7 cm) cutout depth~~

30" (76.2 cm) models

A. 30" (76.2 cm) min. cabinet width
B. 1" (2.5 cm) top of cutout to bottom of upper cabinet door
C. 19 1/4" (48.9 cm) bottom of cutout to floor is recommended.
4" - 19 1/4" (10.2 - 48.9 cm) bottom of cutout to floor is acceptable.
D. 28 1/2" (72.4 cm) cutout width
E. 1 1/2" (3.8 cm) min. bottom of cutout to top of cabinet door
F. 41 3/8" (105 cm)* recommended cutout height
G. 24" (60.7 cm) cutout depth

***NOTE:** The cutout height can be between 41" and 41 1/2" (104.1 cm and 105.6 cm) for microwave/oven combination.

Electrical Requirements

If codes permit and a separate ground wire is used, it is recommended that a qualified electrical installer determine that the ground path and wire gauge are in accordance with local codes.

Check with a qualified electrical installer if you are not sure the oven is properly grounded.

This oven must be connected to a grounded metal, permanent wiring system.

Be sure that the electrical connection and wire size are adequate and in conformance with the National Electrical Code, ANSI/NFPA 70-latest edition or CSA Standards C22.1-94, Canadian Electrical Code, Part 1 and C22.2 No. 0-M91-latest edition, and all local codes and ordinances.

A copy of the above code standards can be obtained from:

National Fire Protection Association
1 Batterymarch Park
Quincy, MA 02169-7471

CSA International
8501 East Pleasant Valley Road
Cleveland, OH 44131-5575

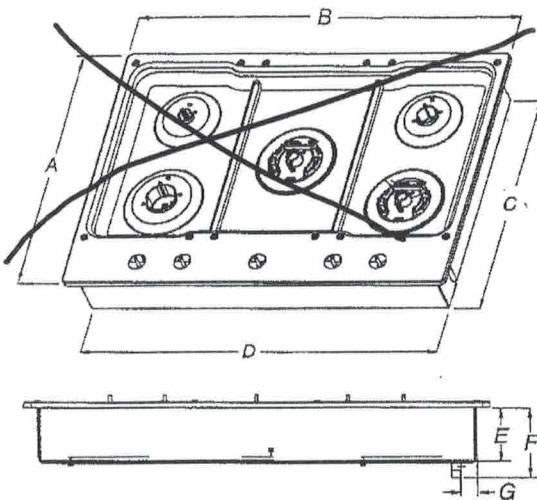
MAY 13 2020

The Ross
Lot 43 Bldg I
Panuganti

(P.P)

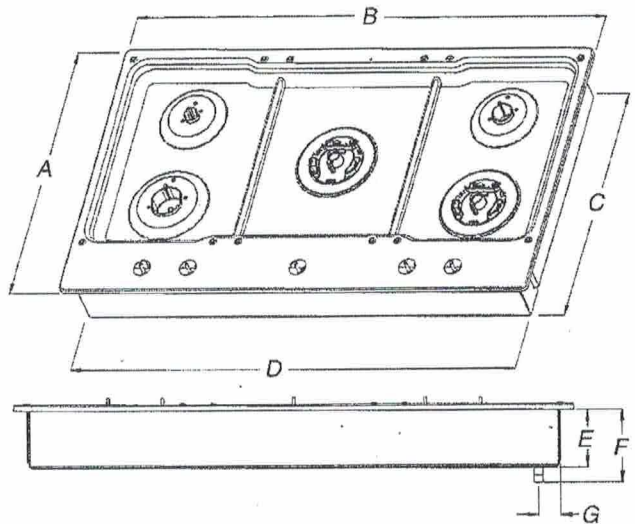
Product Dimensions

KCGS550ESS and KCGS950ESS Models



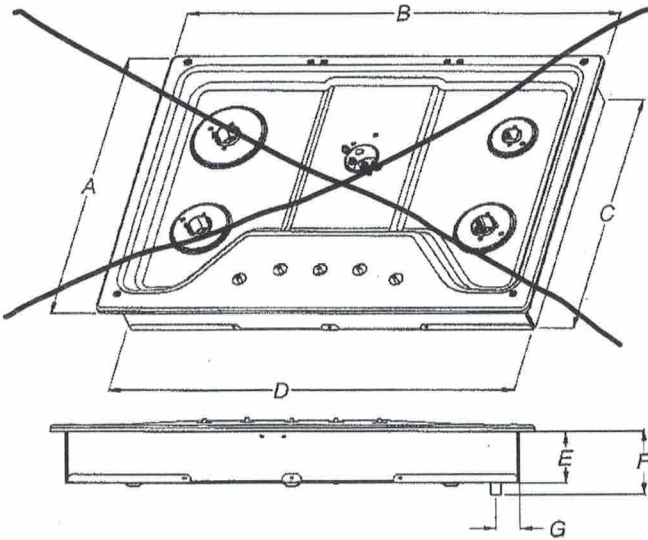
- | | |
|-----------------------------------------------|-----------------------------------------------|
| A. 21" (53.3 cm) | E. 3 ³ / ₈ " (9.2 cm) |
| B. 30" (76.2 cm) | F. 4 ⁹ / ₁₆ " (11.6 cm) |
| C. 19 ³ / ₈ " (49.2 cm) | G. 1 ³ / ₈ " (3.4 cm) |
| D. 28 ³ / ₈ " (72.1 cm) | |

KCGS556ESS and KCGS956ESS Models



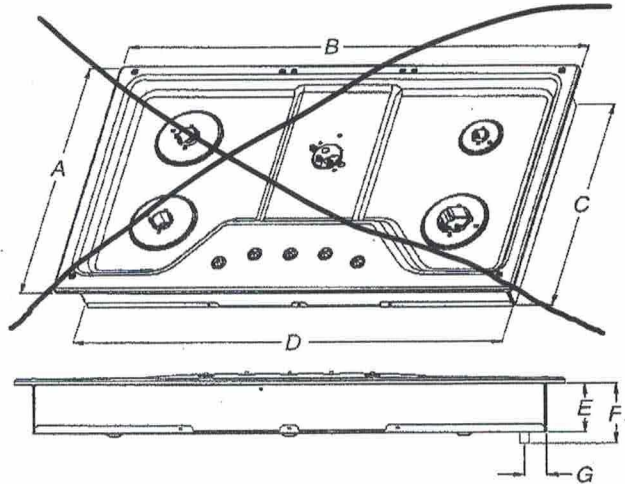
- | | |
|-----------------------------------------------|-----------------------------------------------|
| A. 21" (53.3 cm) | E. 3 ³ / ₈ " (9.2 cm) |
| B. 36 ¹ / ₄ " (92.0 cm) | F. 4 ⁹ / ₁₆ " (11.6 cm) |
| C. 19 ³ / ₈ " (49.2 cm) | G. 1 ⁷ / ₁₆ " (3.6 cm) |
| D. 34 ³ / ₈ " (88.1 cm) | |

All Other 30" (76.2 cm) Models



- | | |
|-----------------------------------------------|----------------------------------------------|
| A. 21" (53.3 cm) | E. 3 ³ / ₈ " (8.6 cm) |
| B. 30" (76.2 cm) | F. 4 ¹ / ₈ " (10.5 cm) |
| C. 18 ⁷ / ₈ " (48.0 cm) | G. 1 ¹ / ₂ " (3.8 cm) |
| D. 28 ³ / ₈ " (72.1 cm) | |

All Other 36" (91.4 cm) Models



- | | |
|-----------------------------------------------|----------------------------------------------|
| A. 21" (53.3 cm) | E. 3 ³ / ₈ " (8.6 cm) |
| B. 36" (91.4 cm) | F. 4 ¹ / ₈ " (10.5 cm) |
| C. 18 ⁷ / ₈ " (48.0 cm) | G. 1 ¹ / ₂ " (3.8 cm) |
| D. 33 ³ / ₄ " (85.7 cm) | |

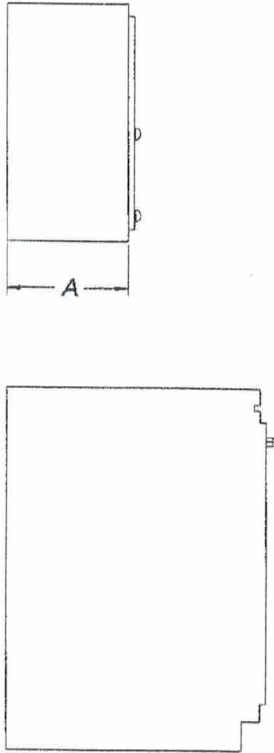
MAY 13 2020

The Ross
Lot 43 Bldg I
Panuganti

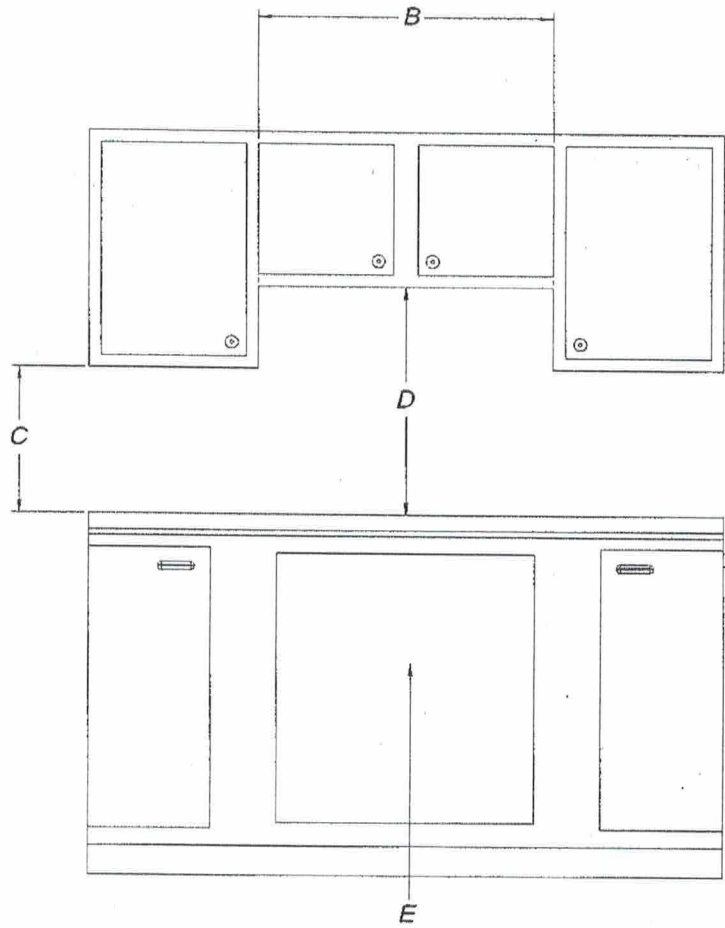
(P.P)

Cabinet Clearances

Side View



Front View



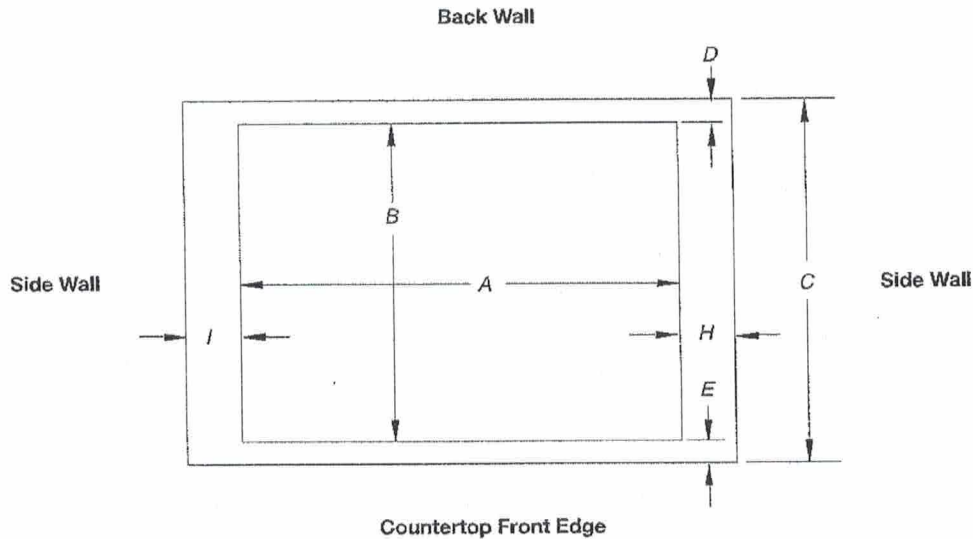
- A. 13" (33.0 cm) recommended upper cabinet depth.
- B. ~~20"~~ (76.2 cm) for 30" models; 36" (91.4 cm) for 36" models.
- C. 18" (45.7 cm) minimum clearance from upper cabinet to countertop within minimum horizontal clearances to cooktop.
- D. 30" (76.2 cm) minimum clearance between top of cooktop platform and bottom of uncovered wood or metal cabinet.
24" (61 cm) minimum clearance if bottom of wood or metal cabinet is covered by not less than 1/4" (0.6 cm) flame retardant millboard covered with not less than No. 28 MSG sheet steel, 0.015" (0.04 cm) stainless steel, or 0.024" (0.06 cm) aluminum or 0.020" (0.05 cm) copper.
- E. Gas line opening - Wall: anywhere 5" (12.7 cm) below underside of countertop. Cabinet floor: anywhere within 6" (15.2 cm) of rear wall is recommended.

MAY 13 2020

The Ross
Lot 43 Bldg I
Panuganti

(P.P)

Cutout Dimensions - Top View



Cutout (Product Opening) Dimensions						
30" (76.2 cm) Models						
Models	A			B		
	Min	Recommended	Max	Min	Recommended	Max
KCGS550 and KCGS950	28 $\frac{1}{2}$ " (72.4 cm)	28 $\frac{7}{8}$ " (73.4 cm)	29 $\frac{5}{16}$ " (74.3 cm)	19 $\frac{1}{2}$ " (49.5 cm)	19 $\frac{3}{4}$ " (50.2 cm)	20" (50.8 cm)
All Other 30" (76.2 cm) Models	28 $\frac{1}{2}$ " (72.4 cm)	28 $\frac{7}{8}$ " (73.4 cm)	29 $\frac{5}{16}$ " (74.3 cm)	19" (48.3 cm)	19 $\frac{1}{2}$ " (49.5 cm)	20" (50.8 cm)
36" (91.4 cm) Models						
KCGS556 and KCGS956	34 $\frac{1}{4}$ " (88.4 cm)	35 $\frac{5}{8}$ " (89.4 cm)	35 $\frac{5}{8}$ " (90.3 cm)	19 $\frac{1}{2}$ " (49.5 cm)	19 $\frac{3}{4}$ " (50.2 cm)	20" (50.8 cm)
All Other 36" (91.4 cm) Models	33 $\frac{3}{4}$ " (86.0 cm)	34 $\frac{5}{8}$ " (87.0 cm)	35 $\frac{1}{4}$ " (89.5 cm)	19" (48.3 cm)	19 $\frac{1}{2}$ " (49.5 cm)	20" (50.8 cm)

Side Walls (Combustible Surfaces)	
Models	H and I
KCGS5 and KCGS9	H and I added together must be at least 48" (122.0 cm), with each side individually being at least 8" (20.3 cm).
KCGS556, KCGS356, MGC9536, WCG97US0, WCG97US6	H and I added together must be at least 48" (122.0 cm), with each side individually being at least 12" (30.5 cm).
All Other Models	Both have to be 8" (20.3 cm) or more.

Back Wall and Countertop Front Dimensions			
Models	C	D	E
KCGS550 and KCGS950	25" (63.5 cm)	2 $\frac{1}{8}$ " (7.3 cm)	2 $\frac{3}{4}$ " (6.9 cm)
All Other Models			3 $\frac{1}{8}$ " (7.9 cm)

NOTES: After making the countertop cutout, some installations may require notching down the base cabinet side walls to clear the cooktop base. To avoid this modification, use a base cabinet with sidewalls wider than the cutout.

If cabinet has a drawer, a 4" (10.2 cm) depth clearance from the countertop to the top of the drawer (or other obstruction) in base cabinet is required. The drawer depth may need to be shortened to avoid interfering with the regulator.

IMPORTANT: If a built-in wall oven is to be installed below this cooktop, the grounded outlet and gas supply piping must be located in an adjacent cabinet. If installing a range hood or microwave hood combination above the cooking surface, follow the range hood or microwave hood combination installation instructions for dimensional clearances above the cooktop surface.

This cooktop and its gas and electrical supply sources must be installed before the undercounter built-in wall oven is installed.

MAY 13 2020

The Ross
Lot 43 Bldg I
Panuganti

P.P