

EDGE PROFILE VERIFICATION FORM

STANDARD EDGE PROFILES

2 cm

STRAIGHT POLISH

UPGRADED EDGE PROFILES

4 cm

~~1/2" BEVEL~~

~~HALF BULLNOSE~~

~~FULL BULLNOSE~~

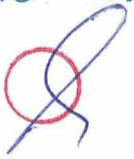
~~OGEE~~

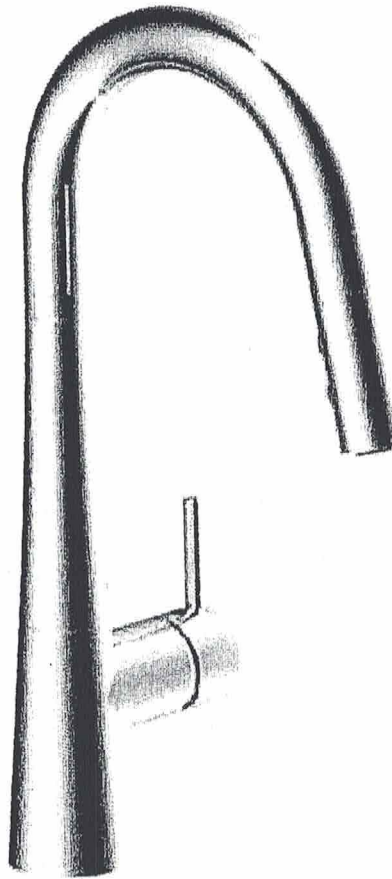
~~DOUBLE OGEE~~

~~straight~~

JUN 13 2019

The Ross
Lot 10 Bldg B



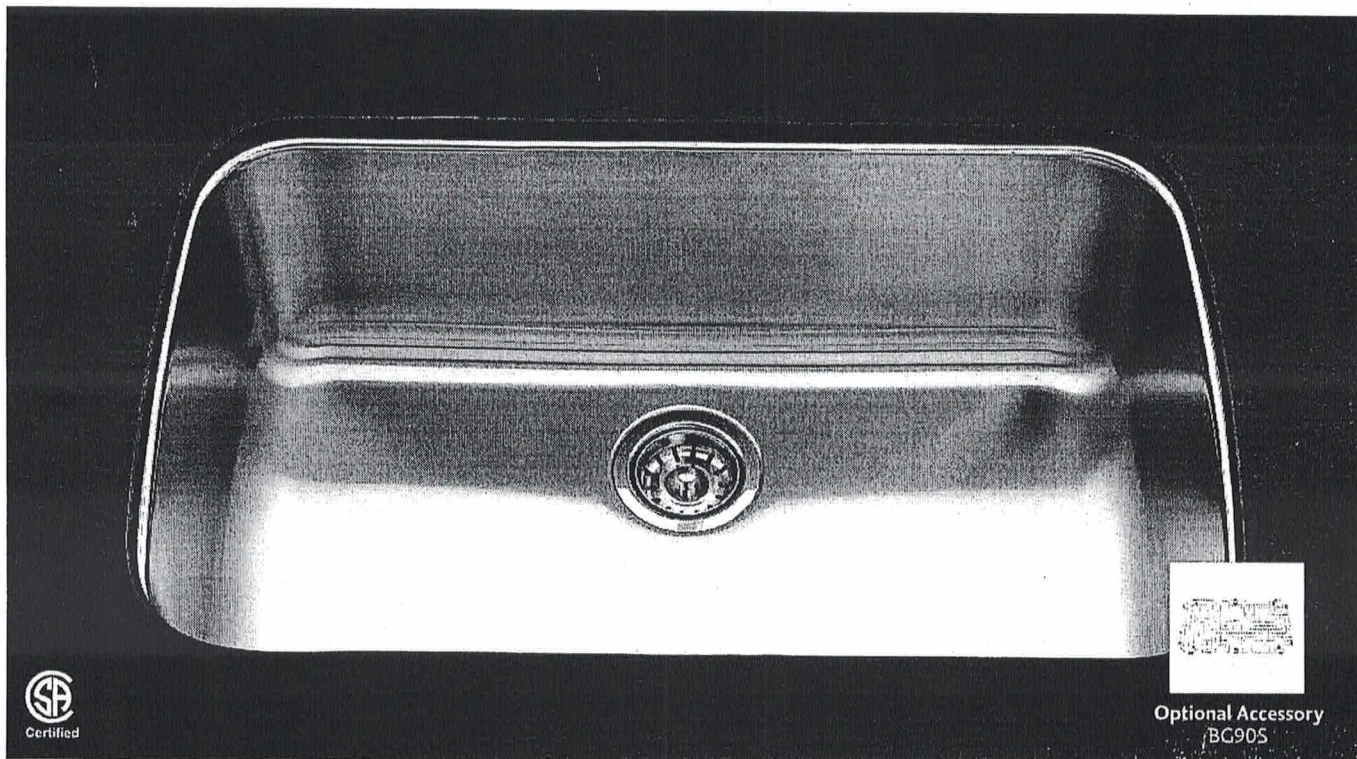


40875 – Bettola Kitchen Faucet with
Pull Down Spray

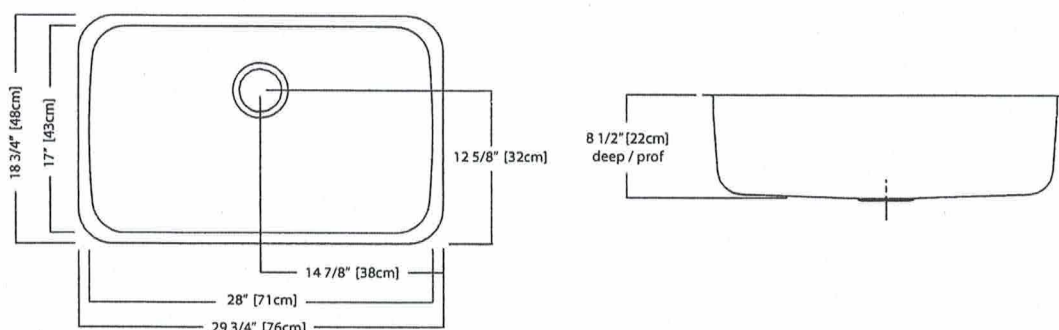
JUN 13 2019

The Ross
Lot 10 Bldg B





Optional Accessory
BC90S



NS1930U/9 SPECIFICATION

Model NS1930U/9 is a single bowl, undermount sink manufactured for Franke Kindred Canada Limited from 18 gauge, 18-10 stainless steel. Product has mirror finished rim and brush finished bowl. Sink is fully undercoated. Basket strainer waste fitting (3 1/2", 89 mm) are included. Sink is backed with a limited buyer lifetime warranty.

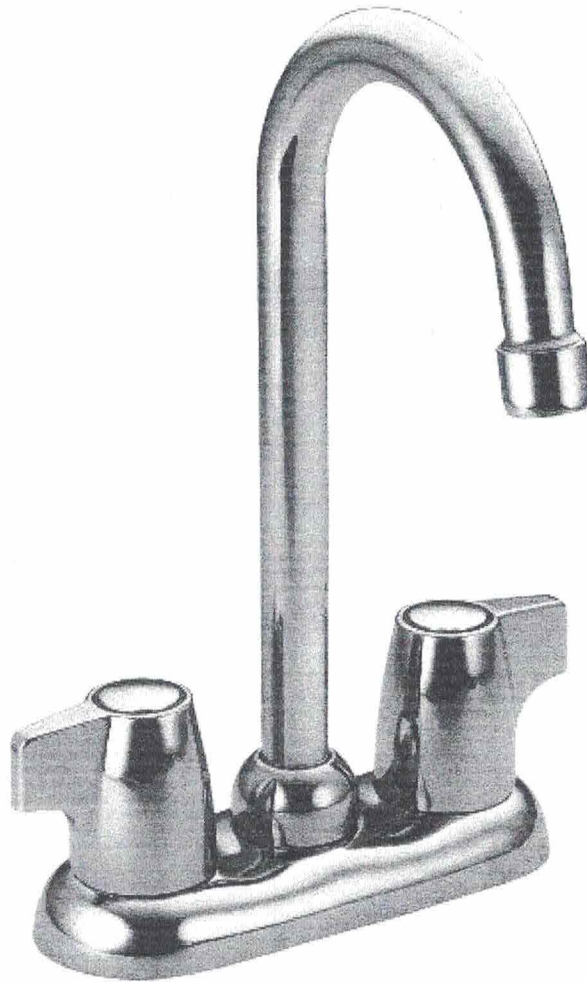
- O.D. 18 3/4" x 29 3/4" x 8 1/2" (48 x 76 x 22 cm)
- Recommended for minimum 36" cabinet

Franke Kindred Canada Limited

P.O. Box 190, 1000 Franke Kindred Road, Midland, Ontario, Canada, L4R 4K9 Phone: 866-687-7465 Fax: 800-361-8408

The Ross
Lot 10 Bldg B

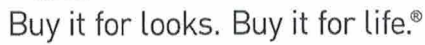
Std Faucet Gr Bar

The Ross
LOT 10 Bldg B*Model: 4903*

Chateau Chrome Two-Handle High Arc Bar Faucet

WHERE TO BUY





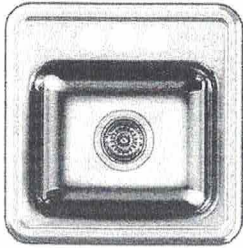
Rev. 11/14

The Ross
Lot 10 Bldg B

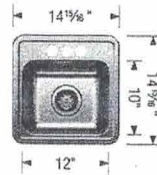
Product Specification Sheet

BLANCO HORIZON BAR (3 holes)

Refined brushed finish



PRODUCT DIMENSIONS



BLANCO HORIZON
BAR (3 holes)

Colour Finish

Model No.

FEATURES / SPECIFICATIONS



Refined
brushed finish

402258

- Durable 18 & 20 gauge stainless steel
- Refined brushed finish
- 18/10 chrome-nickel content for exceptional lustre, durability and strength
- One-piece construction; no seam
- Attractive mirror deck on drop-in models
- Rear-positioned drain hole(s) for maximum usable bowl and cabinet storage
- Pre-installed foam gaskets included with all drop-in models
- Under sink coating protects cabinetry from water damage associated with condensation
- Limited Lifetime Warranty

DESIGN AND PLANNING TIPS

Cabinet Size: 15" (381)

Bowl depth: 6.3" (160 mm)

WARRANTY

Limited Lifetime warranty

Code/Standards Compliance

BLANCO sinks and faucets are third-party tested and certified to CSA, cUPC, ANSI/ASME and NSF standards and listed by applicable certification bodies. For more information on individual product listings, contact our office or listing organization.

BLANCO CANADA
100 Corporation Drive
Brampton, ON L6S 6B5

Tel: 905 494 2400
Fax: 905 494 2425
www.blancocanada.com

Toll Free: 1 877 425 2626
Toll Free: 1 877 825 2626

© 2016 BLANCO CANADA