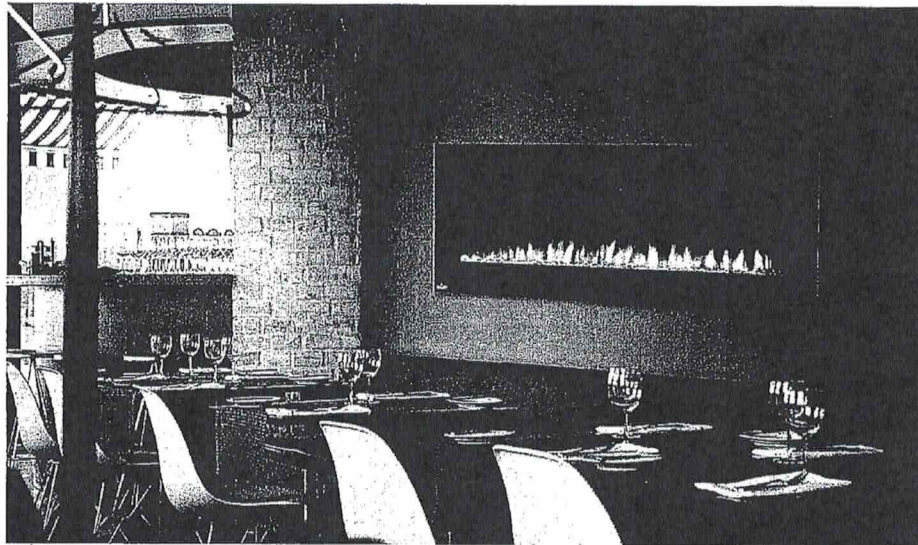




The Ross, Modern Towns Electric Fireplaces

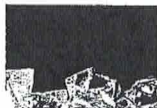
Model
Home
The Ross

Napoleon **Allure** Wall Hanging Electric Fireplace:
Available in 42" ~~60"~~ width and 5"
depth.



Standard Features include:

Crystal clear cube ember bed, touch screen control panel, hand held remote control, Up to 5,000 BTU, 1500 Watt, 120V, can be hardwired, ultra slim design, can be fully recessed into wall, LED lighting, Orange and blue or combined flame colour options, adjustable ember intensifier, front vents, flame / heat adjustment, accessories include alternate colour glass embers.



ALLURE™ SERIES ELECTRIC FIREPLACE

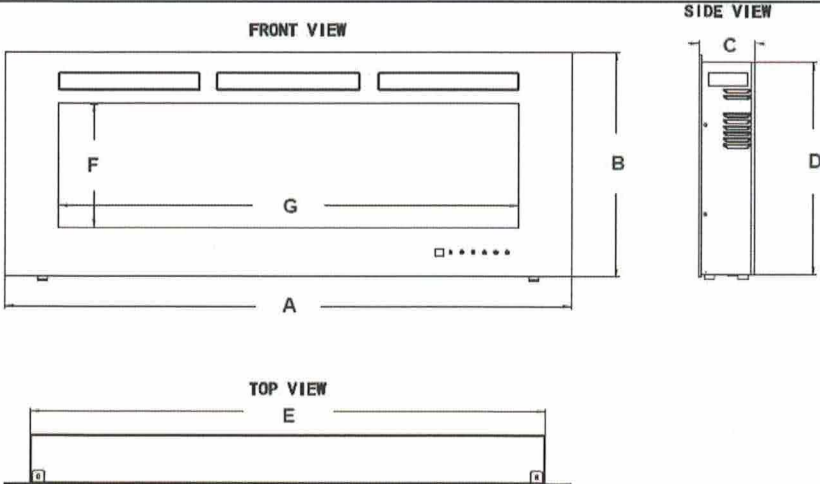
Specifications

Model	BTU	Width		Height		Depth		Glass
		Actual	Framing	Actual	Framing	Actual	Framing	
NEFL32FH	5,000	32	28	21.5	21	5	N/A	22.6 X 12
NEFL42FH	5,000	42	38	21.5	21	5	N/A	32.6 X 12
NEFL50FH	5,000	50	46	21.5	21	5	N/A	40.6 X 12
NEFL60FH	5,000	60	56	21.5	21	5	N/A	50.6 X 12
NEFL72FH	5,000	72	68	21.5	21	5	N/A	62.6 X 12
NEFL100FH	5,000	100	96	21.5	21	5	N/A	90.6 X 12

Overview



Dimensions



DIMENSIONS							
MODEL NUMBER	A	B	C	D	E	F	G
NEFL32FH	32" (813mm)	21 5/8" (550mm)	5" (127mm)	20 1/2" (520mm)	27 5/16" (694mm)	12" (304mm)	22 5/16" (567mm)
NEFL42FH	42" (1067mm)	21 5/8" (550mm)	5" (127mm)	20 1/2" (520mm)	37 1/2" (951mm)	12" (304mm)	32 5/16" (821mm)
NEFL50FH	50" (1270mm)	21 5/8" (550mm)	5" (127mm)	20 1/2" (520mm)	45 7/16" (1154mm)	12" (304mm)	40 5/16" (1024mm)
NEFL60FH	60" (1524mm)	21 5/8" (550mm)	5" (127mm)	20 1/2" (520mm)	55 5/16" (1405mm)	12" (304mm)	50 5/16" (1278mm)
NEFL72FH	72" (1830mm)	21 5/8" (550mm)	5" (127mm)	20 1/2" (520mm)	67 3/8" (1711mm)	12" (304mm)	62 5/8" (1583mm)
NEFL100FH	100" (2540mm)	21 5/8" (550mm)	5" (127mm)	20 1/2" (520mm)	95 3/8" (2422mm)	12" (304mm)	90 9/16" (2300mm)

LOT#3
Build A
The Ross

ALLURE™ SERIES ELECTRIC FIREPLACE

Clearances

Minimum Fireplace Clearances

MINIMUM CLEARANCE TO COMBUSTIBLES

Measurements are taken from the glass front.

Bottom	0"	Top	8" (203mm) to mantel
Sides	0"	Top	8" (203mm) to ceiling
Back	0"		

MINIMUM MANTEL CLEARANCES

! WARNING

WHEN USING PAINT OR LACQUER TO FINISH THE MANTEL, THE PAINT OR LACQUER MUST BE HEAT RESISTANT TO PREVENT DISCOLOURATION.

Framing

Finishing Material

MODEL NO.	A	B
NEFL32FH	21" (535mm)	27 13/16" (707mm)
NEFL42FH	21" (535mm)	38" (965mm)
NEFL50FH	21" (535mm)	45 15/16" (1166mm)
NEFL60FH	21" (535mm)	55 13/16" (1418mm)
NEFL72FH	21" (535mm)	67 7/8" (1725mm)
NEFL100FH	21" (535mm)	95 7/8" (2435mm)

Appliance Installation

Due to the many different materials used on different walls, it is highly recommended that you consult your local builder before you install this appliance on the wall.

- Select a location that is not prone to moisture and is located at least 36" (914mm) away from combustible materials such as curtain drapes, furniture, bedding, paper, etc.
- Have two people hold the appliance against the wall to determine the final location.
- Place unit face down on a soft, non-abrasive surface. Remove the bracket from the back of the unit by removing the screws, refer to Figure 1.
- Mark out location, then mount the bracket(s) onto the wall using the supplied screws. This bracket MUST have the hooks facing upward and be level. **NOTE:** It is strongly recommended that the mounting bracket be screwed into the wall studs where possible. If the wall studs cannot be used, ensure that the supplied plastic anchors are used to affix the bracket to the wall and the bracket is adequately secured.
- With the wall mounting bracket installed have two people lift the appliance up and insert the two hooks on the bracket into the two slots on the back of the appliance.
- Check the appliance for stability ensuring that the bracket will not pull free from the wall.

Product information provided is not complete and is subject to change without notice. Please consult the installation manual for the most up to date installation information.

LOT#3
The Ross

Do not carry
↓ in Design Studio.
Art Wiles
for detail.

Schluter - Design Line - AMGB

Jolly
AMGB

← side Schluter
Jolly AMGB

Plug Wall

TV/
ART
⊕ 56" Floor

12x24 Tile
stacked
vertically

← Tile on each
side

1'8"

FIREPLACE Sketch

