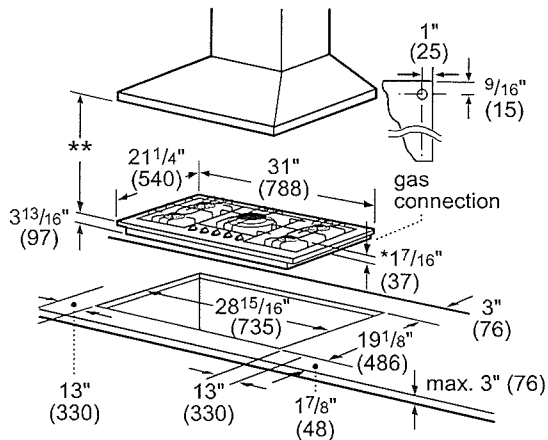


## 30" Gas Cooktop

## Benchmark® Series – Stainless Steel NGMP056UC



## Installation Details

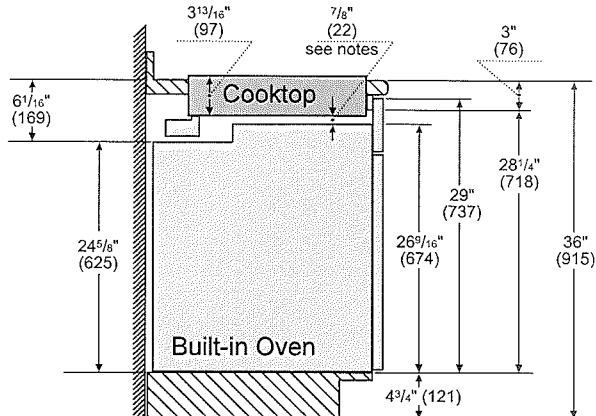


\*\* When installed in combination with a hood, refer to hood manufacturers requirements for installation.

Measurement in inches (mm)

## Installation above Wall Ovens

30" Built-in oven - under gas cooktop

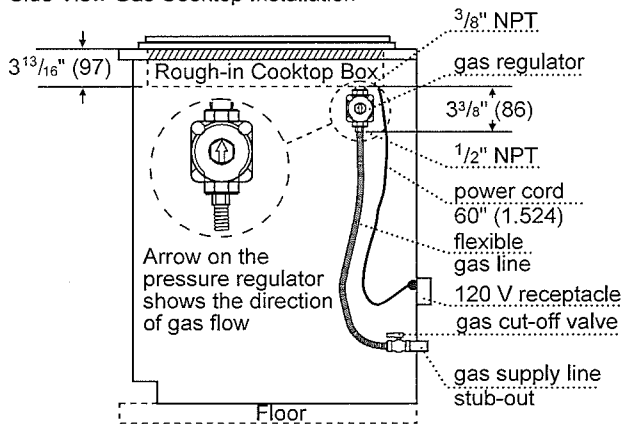
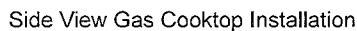


Notes:

Dimensions based on standard countertop height (36" with 4<sup>3</sup>/<sub>4</sub>" toe kick including base plate).

The built-in oven can be installed below the gas cooktop as long as there is no contact between the bottom of the cooktop and the top of the oven.

Measurements in inches (mm)



Measurements in inches (mm)

The Brook  
Lot 3 P2

For help and assistance with Bosch accessories please visit: [www.bosch-eshop.com/eshop/bosch/us](http://www.bosch-eshop.com/eshop/bosch/us) or call 1-800-944-2904 Mon-Fri 5am to 6pm PST Sat 6am to 3pm PST

Notes: All height, width and depth dimensions are shown in inches. BSH reserves the absolute and unrestricted right to change product materials and specifications, at any time, without notice. Consult the product's installation instructions for final dimensional data and other details prior to making cutout. Applicable product warranty can be found in accompanying product literature or you may contact your account manager for further details.

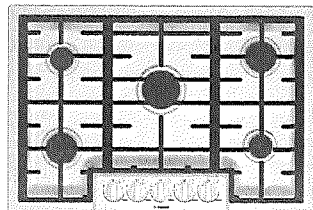
**Warranties:** Bosch warrants that the Product is free from defects in materials and workmanship for a period of three hundred and sixty-five (365) days from the date of purchase. The foregoing timeline begins to run upon the date of purchase, and shall not be stalled, tolled, extended, or suspended, for any reason whatsoever. This Product is also warranted to be free from cosmetic defects in material and workmanship (such as scratches of stainless steel, paint/porcelain blemishes, chip, dents, or other damage) to the finish of the Product, for a period of thirty (30) days from the date of purchase or closing date for new construction. This cosmetic warranty excludes slight color variations due to inherent differences in painted and porcelain parts, as well as differences caused by kitchen lighting, product location, or other similar factors. This cosmetic warranty specifically excludes any display, floor, "As Is," or "B" stock appliances.

For more information on our entire line of products, go to [www.bosch-home.com/us](http://www.bosch-home.com/us) or call 1-800-944-2904

© BSH Home Appliances Corporation. All rights reserved. Bosch is a registered trademark of Robert Bosch GmbH.

# 30" Gas Cooktop

Benchmark® Series – Stainless Steel NGMP056UC



**NGMP056UC**  
Stainless Steel

The 30" Benchmark® Series gas cooktop features a dual-stacked burner that delivers both a low simmer and high heat flame.

## Features & Benefits

Dual stacked burner designed for faster boil time (20,000 BTUs) and a low simmer

OptiSim® Burner – simmer delicate sauces and melt chocolate without scorching

Electronic re-ignition will automatically re-ignite the burner in case the flame goes out

Continuous grates make moving heavy pots easier

Distinctive red LED light indicates burners are on

## General Properties

Knob material Metal

Sealed burners Yes

Grate material Cast iron

## Element Performance

Total BTU load (NG / LP) 51,000 / 43,200

Power of front left burner (NG / LP) 10,000 / 9,100

Power of back left burner (NG / LP) 5,500 / 5,000

Power of center burner (NG / LP) 20,000 / 15,000

Power of back right burner (NG / LP) 10,000 / 9,100

Power of front right burner (NG / LP) 5,500 / 5,000

## Technical Details

Watts 360 W

Circuit breaker 15 A

Volts 120 V

Frequency 60 Hz

Plug type 3 prong

Power cord length 60"

Energy source Gas

Convertible to LP (kit required) Yes

## Dimensions & Weight

Overall appliance dimensions (HxWxD) 3 13/16" x 31" x 21 1/4"

Required cutout size (HxWxD) 3 13/16" x 28 15/16" x 19 1/8"

Minimum distance from counter front 1 7/8"

Minimum distance from rear wall 3"

Net weight 38 lbs

## Accessories – Included

Included LP conversion kit



For help and assistance with Bosch accessories please visit: [www.bosch-eshop.com/eshop/bosch/us](http://www.bosch-eshop.com/eshop/bosch/us) or call 1-800-944-2904 Mon-Fri 5am to 6pm PST Sat 6am to 3pm PST

Notes: All height, width and depth dimensions are shown in inches. BSH reserves the absolute and unrestricted right to change product materials and specifications, at any time, without notice. Consult the product's installation instructions for final dimensional data and other details prior to making cutout. Applicable product warranty can be found in accompanying product literature or you may contact your account manager for further details.

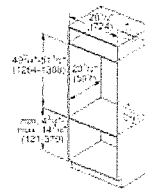
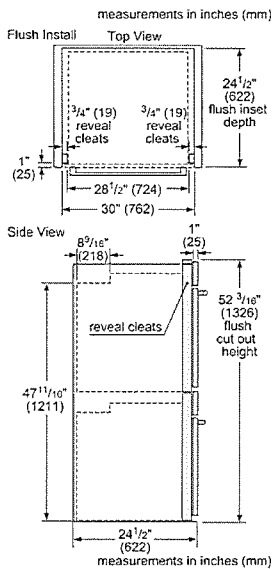
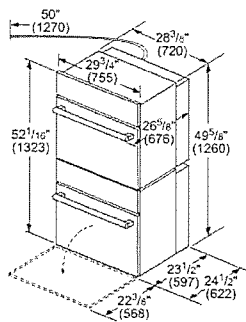
Warranties: Bosch warrants that the Product is free from defects in materials and workmanship for a period of three hundred and sixty-five (365) days from the date of purchase. The foregoing timeline begins to run upon the date of purchase, and shall not be stalled, tolled, extended, or suspended, for any reason whatsoever. This Product is also warranted to be free from cosmetic defects in material and workmanship (such as scratches of stainless steel, paint/porcelain blemishes, chip, dents, or other damage) to the finish of the Product, for a period of thirty (30) days from the date of purchase or closing date for new construction. This cosmetic warranty excludes slight color variations due to inherent differences in painted and porcelain parts, as well as differences caused by kitchen lighting, product location, or other similar factors. This cosmetic warranty specifically excludes any display, floor, "As Is", or "B" stock appliances.

For more information on our entire line of products, go to [www.bosch-home.com/us](http://www.bosch-home.com/us) or call 1-800-944-2904

© BSH Home Appliances Corporation. All rights reserved. Bosch is a registered trademark of Robert Bosch GmbH.

## Double Oven

### 30" Double Wall Oven 500 Series - Stainless Steel HBL5551UC



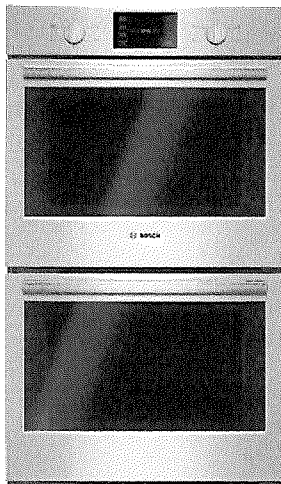
\* Junction box may be installed above, below, or to the left or right of the unit within range of the power conduit.

measurements in inches (mm)

The Brook  
Lot 3P2

## Double Oven

### 30" Double Wall Oven 500 Series - Stainless Steel HBL5551UC



### Introducing the Newly Designed and Engineered Bosch Wall Oven Featuring Heavy-duty Metal Knobs

- Heavy-duty Metal Knobs for a Premium Look and Feel.
- The Wall Oven is Designed to be Installed Flush with your Cabinetry.
- Wall Ovens are Compatible with Most Competitors' Cut-Outs.

#### Technical Data

Cooking mode :	Conventional heat,
Half width variable grill, Top heating, 1/3 bottom heat., warming	
Cooking method second cavity :	Top/bottom heating,
Top heating, 1/3 bottom heat., Variable small-area grill, Warming	
Integrated Cleaning system :	No, Self Clean
Number of interior lights :	1
Included accessories :	
2 x oven racks /upper, 2 x oven racks /	
Bake Element Wattages cavity 1 (W) :	2400
Broil Element Wattages cavity 1 (W) :	3800
UPC code :	825225906483
Product color :	Stainless steel
Energy source :	Electric
Watts (W) :	8000
Current (A) :	40
Volts (V) :	240/208
Frequency (Hz) :	60
Approval certificates :	CSA
Power cord length (in) :	50"
Power cord length (cm) :	127
Appliance Dimensions (h x w x d) (cm) :	132.3 x 75.5 x 59.7
Required cutout size (HxWxD) (in) :	
49 3/4" - 51 1/2" x 28 1/2" x 23 1/2"	
Overall appliance dimensions (HxWxD) (in) :	
52 1/16" x 29 3/4" x 23 1/2"	
Overall appliance dimensions (HxWxD) (mm) :	
1323 x 755 x 597	
Product packaging dimensions (HxWxD) (in) :	
53 7/8" x 34" x 31 1/2"	
Net weight (lbs) :	274
Net weight (kg) :	124.0
Gross weight (lbs) :	304
Gross weight (kg) :	138.0

#### Included accessories

2 x oven racks /upper  
2 x oven racks /lower

#### Optional accessories

HEZTR301 : Telescopic Oven Rack 30"